



KYNETON WOODLANDS PROJECT

PROTECTING BIODIVERSITY

The Grassy Woodlands in the rolling hills northeast of Kyneton in central Victoria are treasured for their picturesque scenery and environmental significance. However, as with other threatened Grassy Woodlands across south eastern Australia only 20% of this type of vegetation remains in the district.

Most of the remnants have depleted species diversity and are severely degraded by weed invasion and the natural death of trees in the landscape. If we do nothing to replace them then we could end up with a largely treeless environment.

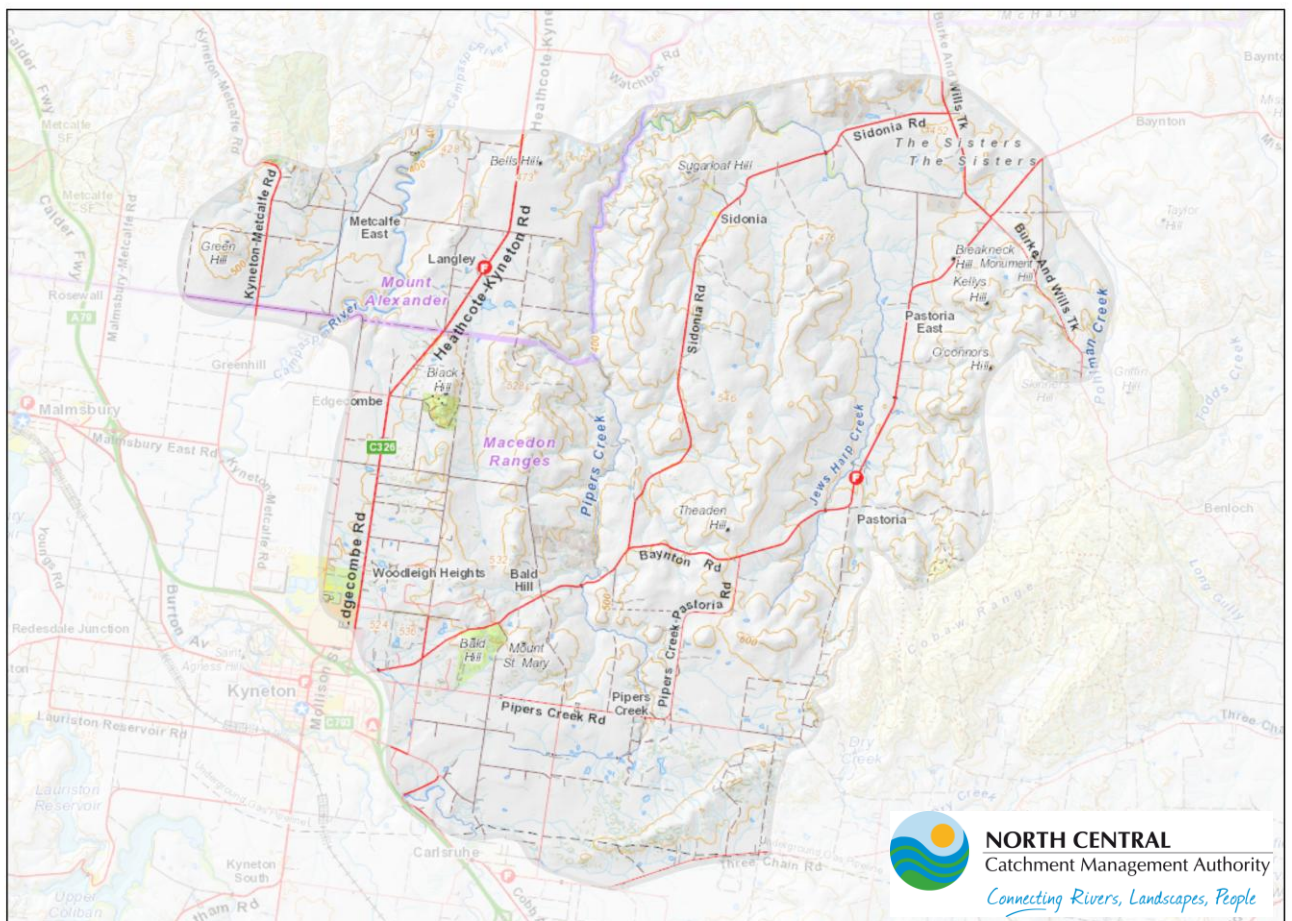
To address this, the North Central Catchment Management Authority (CMA) secured \$2.47 million from the Australian Government's Biodiversity Fund to assist landholders to protect, enhance and increase Grassy Woodland habitat over a five year period.

PROJECT GOALS

- To protect and enhance 950 hectares of remnant woodlands
- To re-establish 610 hectares of woodland vegetation

WHAT CAN THE PROJECT FUND?

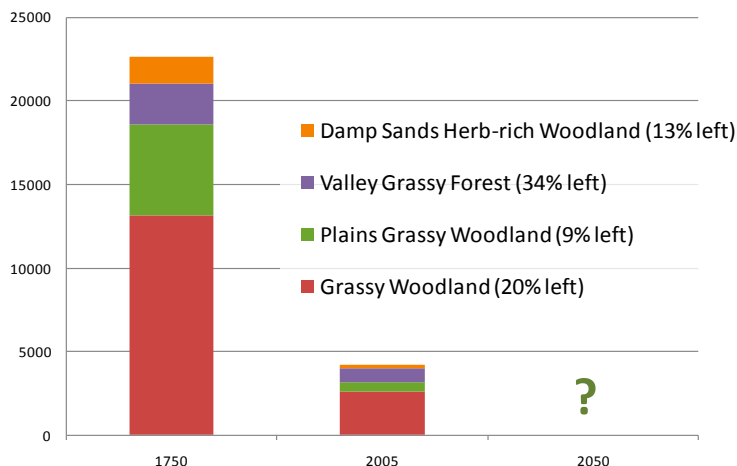
- **Fencing** to protect remnant vegetation from livestock grazing pressure or to establish revegetation
- **Revegetation** of trees, shrubs, grasses and herbs
- **Weed control** to prevent the infestation or spread of new and emerging threats to biodiversity, i.e. not gorse or blackberry



NORTH CENTRAL
Catchment Management Authority
Connecting Rivers, Landscapes, People

GOING, GOING, GONE?

Grassy woodlands are one of four native vegetation communities that are at threat of extinction in the Kyneton district, as demonstrated in the chart below (data courtesy of the Department of Environment and Primary Industries).



Aside from Bald Hill and Black Hill reserves, there are no significant areas of these endangered vegetation communities remaining. So the continued existence of the woodlands and their unique flora and fauna depends on private landholders like you.

RECORDED THREATENED SPECIES

The area contains many large intact remnants, including many large old trees and remnant derived grasslands. It presents excellent opportunities to reconnect remnant vegetation on reserves and link with high quality roadside vegetation.

Two hundred and forty species of indigenous plants have been recorded within the project area. Of these, two nationally (EPBC Act) listed flora species have been recently recorded: the endangered Matted Flax-lily (*Dianella amoena*) and vulnerable Clover Glycine (*Glycine latrobeana*). In addition, the Victorian threatened Castlemaine Spider Orchid (*Caladenia clavescens*) has also been recorded.

The project area is known to contain one nationally (EPBC Act) listed fauna species; the vulnerable Growling Grass Frog (*Litoria raniformis*). In addition 14 State threatened species have been recorded within the project area.



Clover Glycine (*Glycine latrobeana*) (Photo: Tanya Loos)

A COLLABORATIVE APPROACH

A Project Reference Group containing representatives of the community, Landcare groups, Macedon Ranges Shire Council and Mount Alexander Shire has been established.

The Group will guide the North Central CMA in the planning of community engagement activities and prioritisation of on-ground works throughout the life of the project.

In addition to the project funded works on private land, the Macedon Ranges Shire Council is also contributing an in-kind \$80,000 per year targeting weeds on public land within the project area.

Recognising Taungurung Clans Aboriginal Corporation as the Traditional Owners of the area, involving them in the delivery of on-ground works and raising community awareness of cultural heritage is an important aspect of the project. This will also be achieved through the involvement of Dja Dja Wurrung Enterprises.

PROMOTING GRASSY WOODLANDS

The project has a strong community engagement component, connecting with active Landcare groups to promote the protection and enhancement of Grassy Woodlands.

Activities include workshops and field days covering topics such as reptiles, biodiversity, birds, koala's and cultural heritage. The project is promoted through presentations at local schools, Landcare groups and local government meetings. The project is featured annually at the Kyneton Show and promoted on the North Central CMA website and social media.



Project tree planting day with Langley Primary School students, August 2013 (Photo: North Central CMA)

FOR MORE INFORMATION

Telephone (03) 5448 7124
www.nccma.vic.gov.au



Australian Government



NORTH CENTRAL
 Catchment Management Authority
 Connecting Rivers, Landscapes, People