

North Carolina Shell Club 2023 Spring Meeting Oral Auction A Selection of Shells from the Everett Long Collection

**25 March 2023
Ocracoke Community Center
Ocracoke North Carolina**

This is a group of shells that is a tip of the iceberg from the Everett Long collection. North Carolina Shell Club purchased the collection from his wife Nancy after Everett's sudden passing in 2022. Everett always wanted Shell Club members to benefit from the many collections that were donated to the club. Though the club does not buy estates, in this case we made a one time exception to this policy due to Everett's dedication to, leadership and love for the club. The scope and depth of what Everett amassed is more staggering every time we handle it. He would be pleased that his many friends and members of the club have opportunity to benefit from his collection.

This is the first oral auction from his collection. By appearance the conclusion can be made that best has been assembled for this offering. It is indeed true in respect to many of the species included, but it barely scratches the surface of what we will offer in the future.

Notes on the Auction

We include an "Opening bid." We began implementing this at the November 2022 auction as many of the shells we offer have high market value. It appears realistic to go straight to where the bidding will take us anyway. Granted, some opening bids appear frighteningly high but minimums are no more than one half estimated retail, in most cases well below that. Not all shells which are set to open at one dollar should be regarded as less valuable. We are starting many lots at this minimum price in the spirit of allowing the market to determine value.

The selection of shells in this auction include stunning shells that are affordable by even the most austere budget. That is a beauty in shells. They do not have to be rare and expensive to hold high appeal. It is an auction. Sometimes there is no predicting what sends the price of one lot into the stratosphere and the next one, the bargain basement.

Several of the shells offered do not have data. No catalog was recovered with the collection. Some shells had no data slip included with them. While unfortunate for scientific value, these shells remain true to Everett's high standards and may provide bidders opportunity to acquire one at a great price.

Some shells have a yellow "Happy Face" sticker fixed to them. Everett used the stickers to indicate for his family the shells he knew were especially valuable. Due to market fluctuations and that he had not completed his survey before his death, a sticker may not always be present on "valuable" shells offered in the auction.



Minimum Bidding Increments

Price \$1 - \$50 = \$1

Price \$50 - \$100 = \$5

Price \$100+ = \$10

Of course we accept bids greater than the minimums!

Our goal is for this auction to not progress late into the evening. After a long day at North Core Banks (Portsmouth) and many people at the meeting taking a 7 AM ferry home the next morning, I designed the auction with fewer lots than our more typical 120.

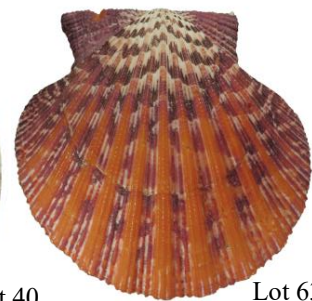
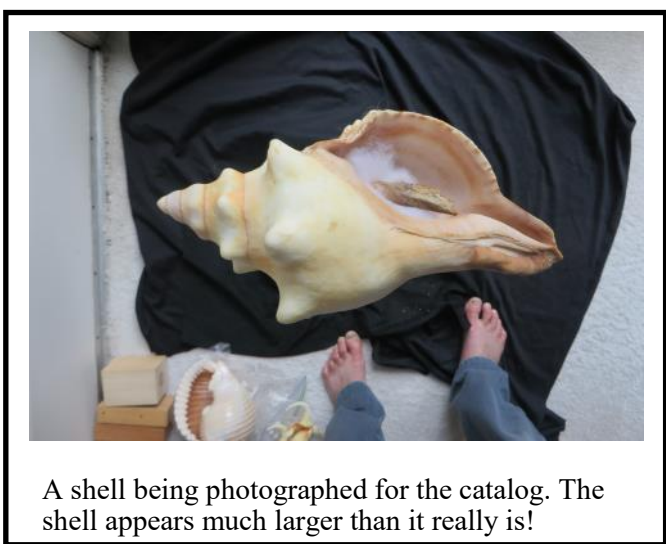
Despite the reduced lot number, this auction is arguably the most important offering the club has ever made.

Proceeds support Scholarships at UNCW and or other selected educational programs.

My wife Nancy and I are the auctioneers. We are not trained auctioneers so exercise patience with our flubs. It will be a fun evening. Mark Johnson has graciously accepted my invitation to be our "Igor."

A salute to Dan Minor. He selected the shells for this offering and authored a detailed inventory file, including many helpful notes. His work saved me untold hours creating this catalog. Recording particulars on a shell including size and data, classification and verifying classification via WoRMS is no trivial enterprise! He makes it look easy.

John Timmerman
North Carolina Shell Club Oral Auction Chair





1 Bullmouth Helmet

Cypraeacassis (Cypraeacassis) rufa (Linnaeus, C., 1758)

157mm Fine, large for species, The species is favored for making cameos.

ex Donald Bosch collection,

Opening bid \$1



2 West Indian Chank

Turbinella angulata ([Lightfoot, J.], 1786)

244mm with operculum, Fine with baby shells taken from beached egg casing (not shown),

sponge borings on spire,

collected by Everett Long, June 2004, Abaco,

Bahamas

Opening bid \$1



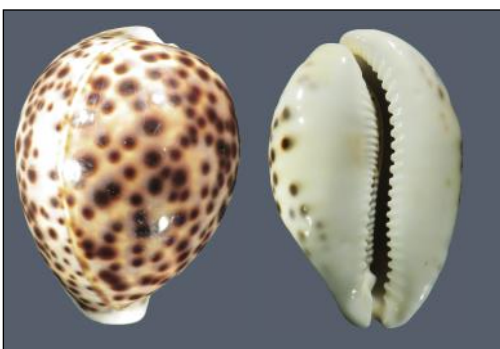
3 Pacific Trumpet Triton

Charonia tritonis (Linnaeus, C., 1758)

321mm F+ no data

A classic mainstay of many collections A super nice shell

Opening bid \$1



4 (Hawaiian?) Tiger Cowrie

Cypraea tigris Linnaeus, 1758 / *Cypraea tigris schilderiana* Cate, C.N., 1961

119.5mm F+ no data, fairly unmistakable by size, never common, extra-large Hawaiian Tiger Cowries represent gigantic examples of a well-known shell. Specimens of the size here are found in other regions including Vietnam and East Africa.

Knowing that it is indeed a Hawaiian shell is impossible for lack of data. Jumbo Tiger Cowrie specimens command a premium no matter where collected.

Opening bid \$50



5 Bednall's Volute

Volutoconus bednalli (Brazier, J., 1878)

99.3mm Good, rare, great markings, dead

collected, lip trimmed, ex collection of

Rear Admiral Jerrold Michael

Opening bid \$25



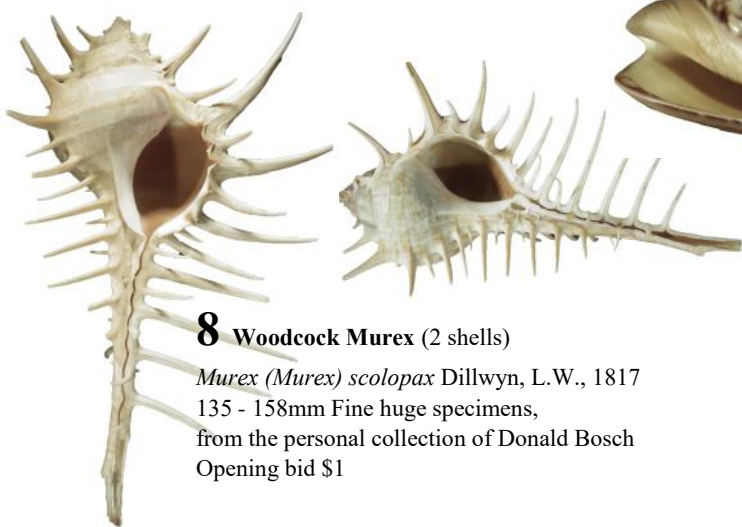
6 Princely Cone (2 shells)

Conus (Darioconus) aulicus (Linnaeus, C., 1758)

112 - 119mm Fine good size, great pattern, one with Perio. limited data

"Philippines"

Opening bid \$1



8 Woodcock Murex (2 shells)

Murex (Murex) scolopax Dillwyn, L.W., 1817

135 - 158mm Fine huge specimens,

from the personal collection of Donald Bosch

Opening bid \$1



7 Tented Olive

Oliva (Porphyria) porphyria (Linnaeus, C., 1758)

116.3mm F+ huge! No data

rare this size; great pattern; a truly awesome shell!

Opening bid \$40



9 Zanzibar Tudicula

Tudivasum zanzibaricum (Abbott, R.T., 1958)

54mm F+ great spines, fully mature, scarce,

Everett purchased this shell directly from a man in Kenya. Everett first received an email with photographs and asking price. The final price was often negotiable. Everett sent payment via Western Union. He emailed the code to claim payment in several separate emails. His supplier reported theft was a constant risk. Everett had faith in the transaction as the seller was an individual unknown to him with no association with a platform such as eBay where feedback helps guide the decision to accept an offer. He started buying shells from this man beginning with this very difficult to obtain species. Of several he purchased, this was one of the nicest.

Opening bid \$30

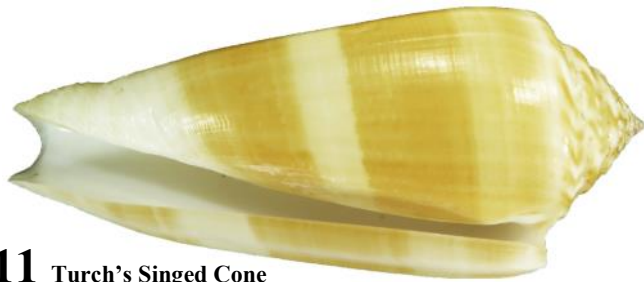


10 Helmet Vase

Vasum (Vasum) cassiforme (Kiener, L.C., 1840)

90.0mm Fine a long time favorite with collectors, this specimen was originally purchased from Neptune's Treasures by Ed Hanley. Very spiny!

Opening bid \$1



11 Turch's Singed Cone

Conus (Pionoconus) consors turschi (var.) Motta, A.J. da, 1985

89.9mm F+

maybe regular *consors*, or *consors anceps*, originally sold by Don Pisor

Opening bid \$10



12 Bock's Cone

Conus (Asprella) sulcatus bocki

(var.) (Sowerby, G.B. III, 1881)

67.0mm F+ incredible beaded specimen, originally sold by Donald Dan Typical for the species the sculpture stands this apart from the majority of Cone species which lack sculpturing on the shell

Opening bid \$10



13 Amadis Cone

Conus (Leptoconus) amadis

castaneofasciatus "Sowerby"

Dautzenberg, Ph., 1937

78.45mm F+ Super pretty shell, originally sold by Rich Goldberg

Opening bid \$1



14 Vic Wee's Cone

Conus (Textilia) vicweei Old, W.E., 1973

76.7mm F+ the markings of this species are unlike any other cone and excellent for this specimen.

One of Everett's "Happy Face" shells.

sold by Sue Hobbs

Opening bid \$100



15 Brazier's Circumcision Cone (2 shells)

Conus (Pionoconus) circumcisis brazieri

(var.) Sowerby, G.B. III, 1881

73 - 78mm F+ ex Tom Shepard, collected 1987

Opening bid \$1



16 Vellipin's Cone

Conus (Dauciconus) vellepinii Fischer, P. & A.C. Bernardi, 1857

67.3mm Fine large specimen for species, with operculum, great dorsal markings, not often represented in private collections, dredged off of Key West, Florida

Opening bid \$40



17 Acorn Cone (4 shells)

Conus (Leporiconus) glans Hwass, C.H. in Bruguière, J.G., 1792

24 - 31mm F+ great colors and variations

Opening bid \$1



20 Magistrate Cone (2 shells)

Conus (Stephanoconus) archon Broderip, W.J., 1833
Broderip, W.J., 1834

51 - 89mm Fine the large specimen is huge for the species. It has many growth arrests on the body whorl, typical of very mature shells. collected by Everett Long. Note: Identification on label may be inaccurate

Opening bid \$75



23 Victor Cone

Conus (Eugeniconus) nobilis victor (Broderip, W.J., 1842)

40.1mm F+ exquisite pattern, This is one of a confusing group of cones. We are not sure of ID, labeled *skimmeri*, but is more likely *nobilis*

Opening bid \$30

25 Marlinspike

Oxymyris maculatus (Linnaeus, C., 1758)
207mm Good, no data, A big one, over the magic 8" length! An impressive, heavy shell. There is a growth mend near the aperture,
The largest *Terebra* species.

Opening bid \$1



18 Bubble Cone (2 shells)

Conus (Textilia) bullatus Linnaeus, C., 1758

51 - 54mm F+ beautiful contrasting pair, one dark-red, one light pink
Stunning!

Opening bid \$1



21 Textile Cone

Conus (Cylinder) textile archiepiscopus (var.) Hwass, C.H. in Bruguière, J.G., 1792

72.67mm Fine The classic Textile Cone in a striking blue-gray base color.
Everett purchased this shell from his Kenyan source

Opening bid \$1



24 Glory-of-the-Atlantic Cone

Conus (Atlanticonus) granulatus (Linnaeus, C., 1758)

22.1mm F+ One of the most difficult to obtain "Glory" Cones. A gorgeous pink shell, originally purchased from Shamaron Shells, collected off Roatan Honduras, an area where collecting is now banned

Opening bid \$50



19 Magnificent Volute

Cymbiola magnifica (Gebauer, J.J., 1802)

211mm F+ superb pattern; fully mature shell Never a disappointing species that truly lives up to its name

Opening bid \$25



22 Barthelemy's Cone

Conus (Pionoconus) barthelemyi Bernardi, M., 1861

70.5mm F+ Wow! A gorgeous extra-large, dark specimen.

originally sold by Sue Hobbs

Opening bid \$50





26 Trapezium Horse Conch

Pleuroploca trapezium (Linnaeus, C., 1758)

219mm Good A gigantic, gerontic shell, with operculum. The exterior of the shell is eroded. Perhaps not as attractive as younger shells, these old shells are a striking addition to the life history of the species. This animal accounted for many other mollusks eaten in its lifetime. ex Donald Bosch collection, from Oman
Opening bid \$1



27 Atlantic Trumpet Triton

Charonia variegata (Lamarck, J.B.P.A. de, 1816)

288mm Good This is the Atlantic species parallel to the well-known Pacific species. Some workers treat this as a subspecies to its Pacific counterpart. It is one of several species thought to have differentiated from its Pacific counterpart when the Panama land bridge separated the Pacific and Atlantic Oceans. collected in Haiti, 1986; lip is chipped
Opening bid \$1



A



B



B



28 Common Spider Conch and Scorpio Spider Conch (3 shells)

A *Lambis (Millepes) scorpius indomaris* (Abbott, R.T., 1961) 131mm w/op

B *Lambis (Lambis) lambis* (Linnaeus, C., 1758) (2 shells) 139 -140mm

Of special note are the dark dorsal markings on one of the *Lambis lambis* making it an uncommon specimen of a common shell. W/op, originally sold by Donald Dan
Opening bid \$1



29 Lazarus Jewel Box (2 shells)

Chama lazarus (Linnaeus, 1758)

165mm Fine A large pair that grew attached together. It is really hard to do this specimen justice with the camera. It is much better in hand.
Opening bid \$1



30 Festive Volute

Callipara (Festilyria) festiva (Lamarck, J.B.P.A. de, 1811)

219mm F+ A super nice, large sized specimen with great dorsal markings. It is a classic rarity from deep water off the Horn of Africa, an risky area for fishermen. A great Volute in any collection.
Opening Bid \$50



31 Pacific Lion's Paw

Lyropecten subnodosus (Sowerby, 1835)

164mm Fine- A large and uncommon all orange shell. There are a few sponge holes which are often present in the largest shells. They do not go through to the inside. Originally sold by Donald Dan
Opening bid \$1



32 Townsend's Scallop

Chlamys townsendi (Sowerby, 1895)

161mm F+ A large, uncommon species that is often in rough condition. This specimen is in fine condition for the size and in a striking pale purplish color compared to the more often seen browns. Oman, Bosch family collected, sold by Sue Hobbs
Opening bid \$20





33 Junonia

Scaphella junonia junonia (Lamarck, J.B.P.A. de, 1804)
104.3mm Fine This is a large example. It has a few small growth marks, not uncommon to the species. no data, This always super popular shell has an increased value in recent years due to increased difficulty at collecting new shells.
Opening bid \$125



34 Junonia (2 shells)

Scaphella junonia junonia (Lamarck, J.B.P.A. de, 1804)
90 - 99mm Very Good Two shells with great patterns but chipped lips. no data They are likely bi-catch by scallop boats as many no data Junonia are attributed for. New laws governing how scallops are harvested eliminated this once fairly plentiful resource to collectors of this species.
Opening bid \$75



35 Junonia (2 shells)

Scaphella junonia junonia (Lamarck, J.B.P.A. de, 1804)
74 - 107mm Fine One is large with a great pattern. The small shell is mature but has some dorsal fading, no data, chipped lips Collectors may smooth chipped lips to make shells more attractive. To the scientist, retaining the shell in its found state, chipped lip included, is preferable. However this modification to improve aesthetic appeal while counter to scientific goals is simply a different approach to the ultimate enjoyment of the shell.
Opening Bid \$120



36 Elizabeth's Junonia

Scaphella junonia elizabethae Petuch, E.J. & D.M. Sargent, 2011
104.3mm Fine dredged by Donna and Riley Black, 12/1970, south of Loggerhead Light, Tortugas, Florida, lip chipped
It is closely related to Junonia, differentiated by the paler shell with smaller spots.
Opening bid \$100



37 Dorhn's Volute (2 shells)

Scaphella dohrni (Sowerby, G.B. III, 1903)
50 - 75mm Fine A pair of spectacular shells, one is huge and free of growth mends. They are super difficult to obtain nowadays, most specimens sourced via "recycling" existing collections.
dredged off of Dry Tortugas, lips trimmed
Opening bid \$50



38 Dubious Volute

Scaphella dubia dubia (Broderip, W.J., 1827)
113.25mm Fine ex Warren Graff, dredged off of Key West, 2012,
This is another Scaphella Volute that become very scarce on the market with changing laws concerning the commercial scallop boats which historically were responsible for many specimens being made available to collectors.
Opening Bid \$25



39 Humpback Cowrie

Mauritia mauritiana (Linnaeus, C., 1758)

79.1mm Fine A super unusual shell! It features a rust overglaze. There are several glazed over blemishes and dings. The species often lives in zones of high surf action thus bear scars of being knocked around. It is nonetheless a spectacular shell. Though this specimen is not attributed to such, the rust over-glaze can be in result of the mollusk living on a sunken ship.

Opening bid \$25



40 Magnificent Volute

Cymbiola magnifica (Gebauer, J.J., 1802)

294mm F+ A "Wow" shell. A stunningly huge and boldly marked example of this gorgeous species, it has it all! It will be the centerpiece in any cabinet, display or room. originally sold by Sue Hobbs

Opening Bid \$50

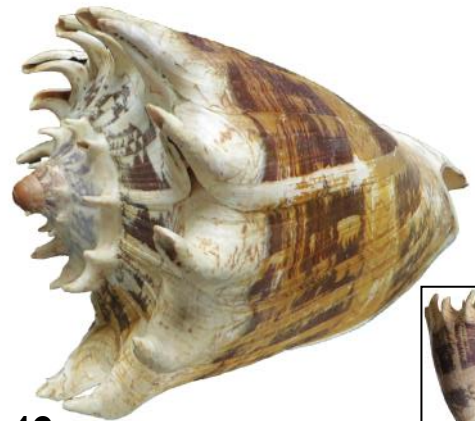


41 Florida Horse Conch

Triplofusus giganteus (Kiener, L.C., 1840)

404mm (15.75") w/op, w/perio.; F+ collected by Everett Long, Bogue Sound, a very large North Carolina specimen, uncleaned dorsum, encrusted with a few oysters Everett collected this and other shells pretty much right out of the backdoor of his house.

Opening bid \$30



42 Imperial Volute

Cymbiola imperialis ([Lightfoot, J.], 1786)

222mm F+ A huge, fat shell, collected by local fishermen in 1975, great spines, mature, with periostracum, Most Imperial Volute shells have had the durable periostracum removed, often via mechanical polishing.

Opening bid \$25



43 Broderip's Cowrie

Callistocypraea broderipii (Sowerby, G.B. I, 1832)

76.8mm F+ Super rare! Very few in private collections. A bit pale, limited dorsum damage. After consulting with me per condition and estimated value of this shell, Everett made an offer and bought it from his Kenyan supplier

Opening bid \$500

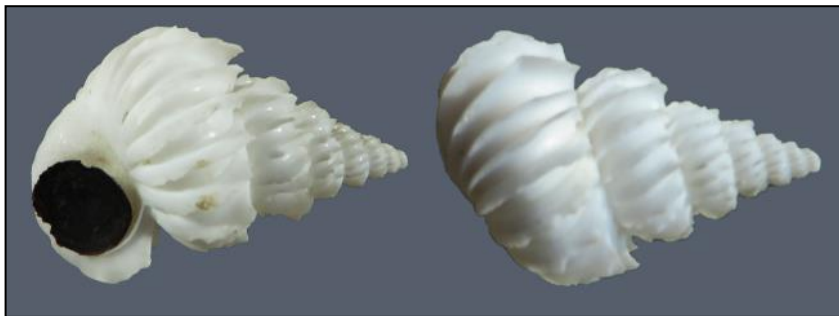


44 Prince Cowrie

Leporicypraea valentia (Perry, G., 1811)

82.47mm F+ An excellent, dark specimen, slightly immature aperture; ex Warren Graff collection

Opening bid \$100



45 Noble Wentletrap

Sthenorytis pernobilis (Fischer, P. & A.C. Bernardi, 1857)

29.72mm w/op; F+ dredged off of Key West at 130 fathoms super rare shell
Another "stunner" that we were amazed to discover Everett had quietly added to his collection. Much better in hand!
Opening bid \$400



46 Mouse and Don Morre's Cowrie (3 shells)

A *Muracypraea mus mus* (Linnaeus, C., 1758) 44.6mm F+

B *Muracypraea mus bicornis donmoorei* (var.) (Petuch, E.J., 1979) 44 - 57mm F+

excellent dark dorsal markings, great tuberculate dorsums, A beautiful set of this increasingly difficult to obtain shell
Opening bid \$30



49 Grinning Tun

Malea ringens (Swainson, W.A., 1822)

223mm F+ A gigantic, spectacular shell the likes of which are not often seen.
originally sold by Sue Hobbs
Opening bid \$20



47 Amadis Cone

Conus (Leptoconus) amadis amadis aurantia (var.) (Lamarck, J.B.P.A. de" Dautzenberg, Ph., 1937)

71.26mm w/op F+ Not the Amadis Cone we first think of, a pale form
Opening bid \$1



48 Julia Clench's Cone

Conus (Dauciconus) amphurgus juliae (var.) Clench, W.J., 1942

54.76mm Fine (growth mend on dorsum) A cone collected by Everett Long off Goodland Florida is a highly anticipated and prized discovery.
Opening bid \$1

50 King Helmet or Caribbean Helmet

Cassis (Cassis) tuberosa (Linnaeus, C., 1758)

223mm Good, no data A big, gerontic, and heavy shell, eroded dorsum, great shield, nice delta shape, A striking huge shell to pair with the smaller, less aged specimen, Lot 62. The huge shield cannot be beat! The mollusk continued to make shell despite no longer increasing it by internal volume.
Opening bid \$1





51 Giant Clam (Single Valve)

Tridacna gigas (Linnaeus, 1758)

365mm Fine no data SW Pacific

Giant clams are heavily regulated and essentially cannot be imported into USA any longer. It is a heavy shell weighing about 6.5 pounds. They remain popular with shell collectors and interior decorators.

Opening bid \$25



52 Noble Volute

Cymbiola nobilis nobilis ([Lightfoot, J.], 1786)

202mm Fine A huge specimen, trimmed lip. It's heavy like a rock, A very impressive shell, Fully mature examples of the species are often heavily encrusted with marine growth and or messy overglazing. Many shells such as this have been tastefully cleaned.

Opening bid \$10



53 Noble Volute

Cymbiola nobilis nobilis ([Lightfoot, J.], 1786)

159mm Fine This shell boasts an unusual dorsal pattern.

originally sold by Sue Hobbs

Opening bid \$10



54 Langford's Cowrie

Austrasiatica langfordi langfordi (Kuroda, T., 1938)

53.16mm F+ A super rare shell from the South China Sea. Fishing which has made other once rare shells from this sea now relatively plentiful and at much lower prices, has not produced many of this Cowrie. collected in 1977

Opening bid \$100



55 Rat Cowrie

Trona stercoraria (Linnaeus, C., 1758)

78.8mm Fine, A large specimen with brown overglaze, purchased from Sue Hobbs

Opening bid \$1



56 Carnelian Cowrie

Lyncina carneola (Linnaeus, C., 1758)

69.58mm F+ A huge example of a common species, giants are always rare, even in the context of plentiful species.

ex John Downing collection

John Downing's family donated his advanced collection to North Carolina Shell Club. Mr. Downing was a South Carolina gentleman who frequently entered our shows in the 1990s. Through the generosity of his family many of his spectacular shells especially cowries grace club member collections.

Opening bid \$1

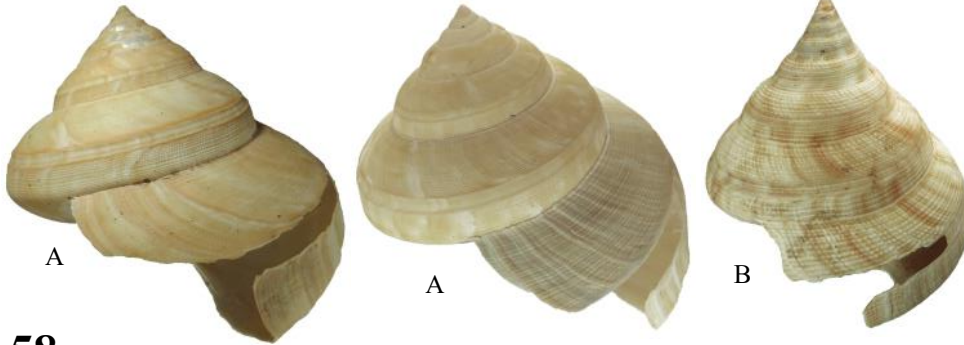


57 Imperial Volute

Cymbiola imperialis ([Lightfoot, J.], 1786)

209mm F+ a very uncommon pink blush base color, w/peri., closely spaced, long spines, mature shell Another Imperial Volute which has not had the durable periostracum removed. It's a hard to top shell. Much better in hand!

Opening bid \$25



58 A Teramahci's Slit Shell (2 shells)

Bayerotrochus teramachii Kuroda, T., 1955

116 - 120mm F+ A pair of huge specimens, limited to no data

B Emperor's Slit Shell

Mikadotrochus hirasei hirasei (Pilsbry, H.A., 1903)

81mm Fine This is a good representative shell. no data A formerly an immense rarity, it is now plentiful to collectors due to fishing in South China Sea but still, "It's a slit shell!"

Opening bid \$1



59 Sabae's Giant Spider Conch

Lambis (Lambis) truncata sabae (Kiener, 1843)

330mm F+ An impressive, huge spider conch from Muscat, Oman, The pointed tip of the spire differentiates this subspecies from *Lambis truncata truncata* which has a flat tipped spire. A shell that makes a bold statement in the room. ex Donald Bosch collection
Opening bid \$1



60 Giant Spider Conch

Lambis (Lambis) truncata truncata (Humphrey, G., 1786)

300mm w/op., F+ A surprising shell with unusual extra digitations, Extra digitations in spider conchs may result from prior injury or hybridization with other *Lambis* species. The cause in this instance cannot be precisely determined though the dorsum shows some irregular growth.

Opening bid \$1



61 Snow Whelk

Sinistrofulgur laeostomum (Kent, 1982)

272mm w/op, F+ collected by Everett Long, mud flats off of Emerald Island, yellow lip, a big NC shell, natural uncleaned exterior.

The North Carolina sinistral species was formerly classified as Lighting Whelk *Sinistrofulgur sinistrum* (Hollister, S.C., 1958). Due to immense regional variation in Busycon, exact classification is often an ongoing debate.
Opening bid \$5



62 King Helmet or Caribbean Helmet

Cassis (Cassis) tuberosa (Linnaeus, C., 1758)

199mm w/op, F+ A fresh darkly colored shell, the label indicates it was collected by Everett Long Makes a nice contrasting pair with the gerontic shell, Lot 50, offered in this auction.

Opening bid \$20





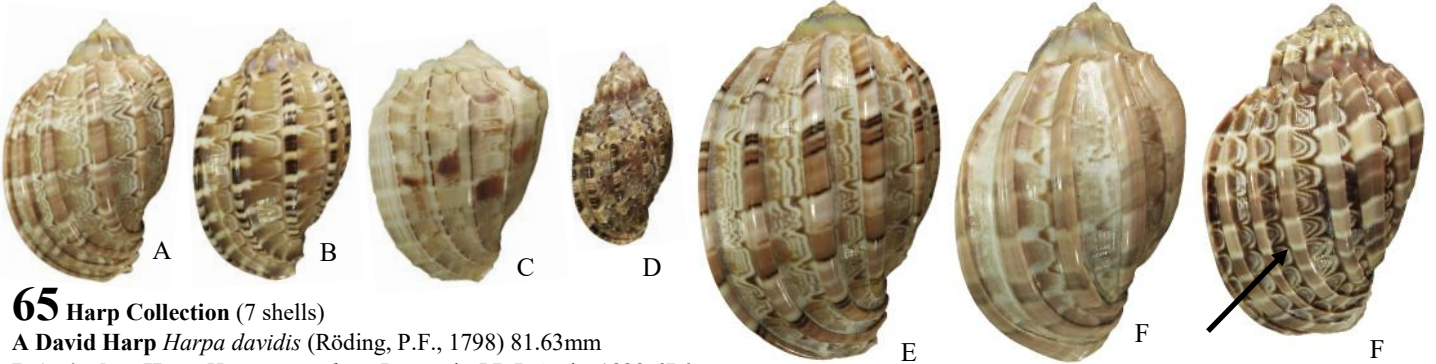
63 Royal Cloak Scallop

Gloripallium pallium (Linnaeus, 1758)
96.37mm F+ A monster, stunning example of a favorite Pecten.
Opening bid \$10



64 Rathbun's File Clam

Acesta rathbuni (Bartsch, 1913)
175mm F+ "A huge, yellow bivalve, from a family hated by Everett Long, but still beautiful enough to collect." Dan Minior fondly recalls how Everett spared no effort telling him how much he did not like bivalves. Everett once held an extensive collection of bivalves which he donated to the Shell Club. Aside from this huge yellow Lima he understandably retained quite a few of the always popular Pecten. originally sold by Sue Hobbs
Opening bid \$1



65 Harp Collection (7 shells)

A David Harp *Harpa davidis* (Röding, P.F., 1798) 81.63mm
B Articulate Harp *Harpa articularis* Lamarck, J.B.P.A. de, 1822 67.0mm
C Panama Harp *Harpa crenata* Swainson, W.A., 1822 62.35mm
D Minor Harp *Harpa amouretta* (Röding, P.F., 1798) 49.53mm
E Noble Harp *Harpa harpa* (Linnaeus, C., 1758) 92.5mm
F Major Harp (2 shells) *Harpa major* (Röding, P.F., 1798) 100 - 107mm

All beautiful shells of this very popular family, it includes three huge shells for their respective species. One of the larger *Harpa major* sports closely spaced ribs on the body whorl. A result of the mollusk reaching its maximum size and slowing in growth, the effect reminds collectors of the far more scarce *Harpa costata* and has sometimes been assigned a slang classification "multicostata" and commands a premium in price.
Opening bid \$1



66 Gold Banded Cone

Conus (Lindaconus) spurius aureofasciatus Rehder, H.A. & R.T. Abbott, 1951 Data may be inaccurate!
50.5mm F+ "Incredible!" to be said with a French accent!
Opening bid \$50

67 Admiral Cone

Conus (Cylinder) ammiralis ammiralis (Linnaeus, C., 1758)
61.3mm F+ It is possibly the *princeps* variation with two large dark bands with small tents. It is a great shell! A very beautiful cone species no matter how you look at it.
Opening bid \$1



68 Benedict's Top Shell

Calliostoma benedicti Dall, W.H., 1889
29.11mm w/op., F+ rare, dredged off of Key West, found by Frank Fumar, May 2006, another shell seldom seen in private collections
Opening bid \$80



69 Checkered Cowrie

Luria tessellata tessellata (Swainson, W.A., 1822)
 27.2mm Gem
 Dave Watts (a close friend of Everett's) collected, double checkerboard pattern super special shell, Always a popular species, value has risen in recent years, No other Cypraea species is like this one which is endemic to Hawaii where it has never been common.
 Opening bid \$150

70 Checkered Cowrie

Luria tessellata tessellata (Swainson, W.A., 1822)
 30.9mm dead collected, Good ex G Kline collection, collected May 1976,
 Even dead examples of this Hawaiian endemic species are prized by collectors
 Opening bid \$10



71 Checkered Cowrie

Luria tessellata tessellata (Swainson, W.A., 1822)
 25.7mm Gem
 ex G Kline collection, collected May 1976
 A smaller jewel of a shell
 Opening bid \$75

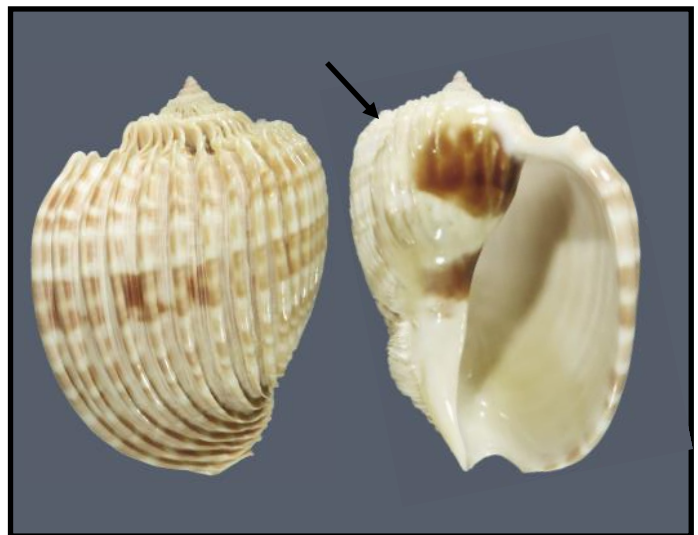
72 Checkered Cowrie

Luria tessellata tessellata (Swainson, W.A., 1822)
 30.9mm superb markings! Gem
 A stunning "Tessy," they don't come much better than this! ex G Kline collection, collected May 1976
 Opening bid \$150



73 Harland's Cone (2 shells)

Conus (Stephanoconus) harlandi (Petuch, E.J., 1987)
 23.7 – 24.3mm one w/op; one without operculum
 F –F+ The type locality off Honduras is now off limits to collecting
 Opening bid \$30



74 Imperial Harp

Harpa costata (Linnaeus, C., 1758)
 64.2mm F
 Always a very desirable Harp, some dorsal rib damage on this specimen does not noticeably harm its beauty,
 ex collection of Walter Paine
 Opening bid \$80



75 Bardey's Frog Shell

Tutufa (Tutufa) bardeyi (Jousseume, F.P., 1894)
308mm Somalia, F+

In excellent condition, a very large and rare shell, examples like this remain hard to obtain. This specimen is typical to the white specimens taken off The Horn of Africa. It is the largest of the Frog Shell species. Generally rare in collections, it has been available in fits and starts over the years. Large specimens are often eroded from life in the sea in addition to being damaged by the trawler nets. This shell is in the fine condition more typical to smaller, young shells. It is one of the finest extra-large Somali specimens offered in recent years.

It's hard to define what the best shell we offered in this auction is, but this certainly is a contender and we saved (one of the) best for last.

A stunning Wow! shell, no matter how you display it!

Originally sold by Sue Hobbs

Opening bid \$100

