

# FORSAKEN TRAIL



After lunch and viewing of the town, head towards Dunn Center on highway 22. During lunch call ahead to the Flint Quarries if you would like to take an afternoon tour. Once in Dunn Center there is the Dunn Historical Museum. After your visit, go East on highway 200 towards the Flint Quarries.

To finish out your trip, go West on highway 200, then turn left on highway 85 heading South. Take I94 back to Medora.

## Western North Dakota

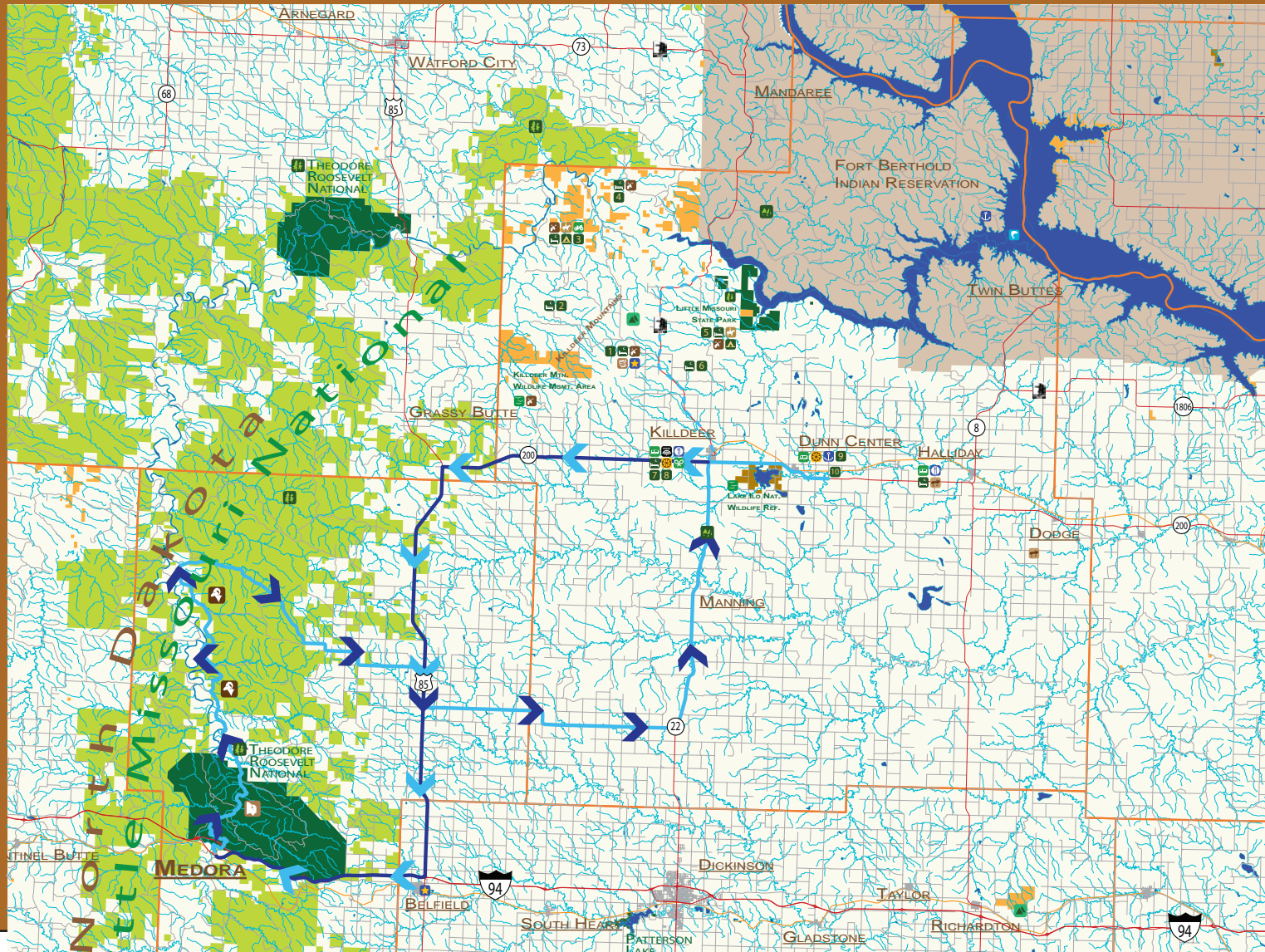
### Daytrip to Killdeer

Starting in Medora, visitors will drive through the Theodore Roosevelt National Park South Unit North into the Grasslands. This will take approximately 2.5 hours with stops to take photos.

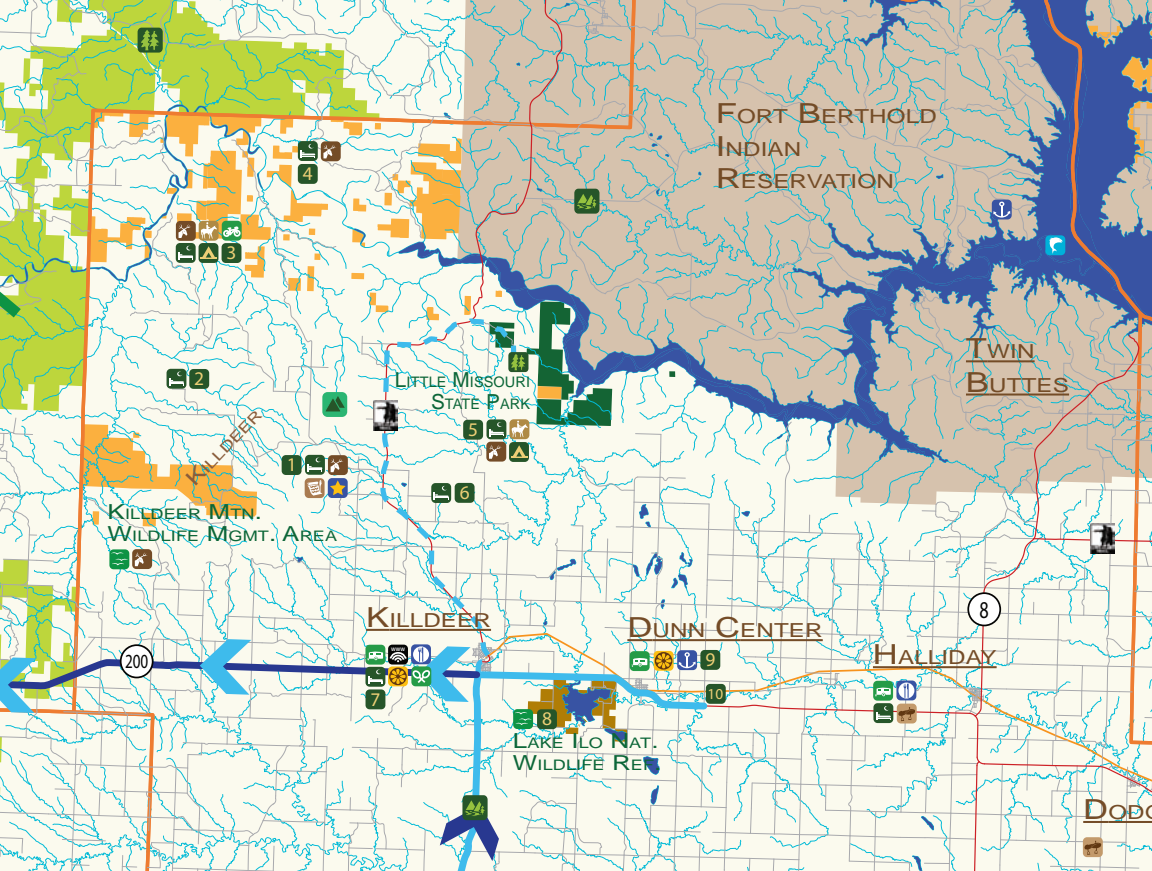
Going East out of the grasslands, visitors will head towards Killdeer on which the road turn South unto highway 85 and then West to highway 22. Take 22 to Killdeer and continue on past towards Dunn Center. On the route a place of interest is the Lake Ilo National Wildlife Refuge.

At Lake Ilo, there is a walking path for nature viewing. There are viewing piers out onto the lake for wildlife viewing.

Once you are done at the Wildlife Refuge, go West on highway 22 back to Killdeer for lunch. We suggest the Buckskin Bar & Grill on your right.







## Optional Overnight Excursion

There is an opportunity for visitors to extend their day trip overnight which would include the Little Missouri State Park. To get there all you have to do is take highway 22 North and you will come right to the entrance.

Once there, you will find areas to camp and park your rv as well as stalls for horses if you brought your own. Also there is an option to rent horses on site for use while in the park. Horses are the only way to see the park.

To leave the park, you will take highway 22 back to Killdeer. From here take highway 200 West to highway 85 South and then turn onto I94 back to Medora.



Knife River Flint Site



Downtown Killdeer

## Daytrip to Killdeer & Surrounding Activities

- 1 Hour: Drive from Medora through Grassland area
- 2 Hours: Lake Ilo Wildlife Refuge
- 1 Hour: Lunch at Buckskin Bar & Grill
- 2 Hours: Dunn County Museum
- 40 Minutes: Flint Quarries
- 1.5 Hours: Drive back to Medora
- Total: 8.5 Hour Daytrip



Little Missouri State Park



Sunset at Knife River Flint Site



Lake Ilo Wildlife Refuge

Medicine Hole	1	Killdeer	701.764.5805	John Combs	N. 47'26.655" W. 102'53.464"
Killdeer Mountain Outfitters	1	Killdeer	701.764.5419	Tim & Sally Dvirnak	N. 47'26.655" W. 102'53.464"
Rock Creek Adventures	2	Grassy Butte	1.800.863.1495	Ron & Cindy Hartman	N. 23'57.82" W. 14'53.01"
River Ranch Retreat	3	Grassy Butte	701.863.6695	Gene Harris	N. 33'33.07" W. 59'4.37"
Deep Creek Adventures	4	Watford City	701.579.3460	Bill & Pam Jorgenson	N. 38'55.55" W. 55'49.40"
Badlands Trail Rides	5	Killdeer	701.764.8000	Twila Benz	N. 47'32.734" W. 102'44.138"
East View Campgrounds	5	Killdeer	701.764.8000	Twila Benz	N. 47'32.734" W. 102'44.138"
Spring Creek Outfitters	6	Killdeer	701.764.5266	John Reiss	N. 28'16.63" W. 44'10.29"
Buckskin Bar & Grill	7	Killdeer	701.764.5321	Eric Kehr & Ron McFadden	N. 22'18.70" W. 45'14.76"
Lake Ilo National Wildlife Refuge	8	Dunn Center	701.548.8110	Corrie Richardson	N. 20'12.25" W. 39'47.05"
Dunn County Museum	9	Dunn Center	701.548.8111	Jerry Patchen	N. 21'17.75" W. 37'23.24"
Knife River Flint Site	10	Dunn Center	701.548.8175	Alan & Gayle Lynch	N. 20'47.48" W. 34'1.68"



connection of Medora and Killdeer to Dunn center lack in decent signage. There are great possibilities for an integrated day trip for someone going to Medora to visit places that we saw on our site visit. It seems that signage is essential in order to direct people where you want them to go and what you want them to experience. The photo montages below and elevation to the right show potential interventions for signage along the route.

There is a true simplicity of hand painted signage in the cities and this needs to stay similar. The quality however is not as well as it could be. It would be a great project for either students or local artists to donate their time and creativity to their community.



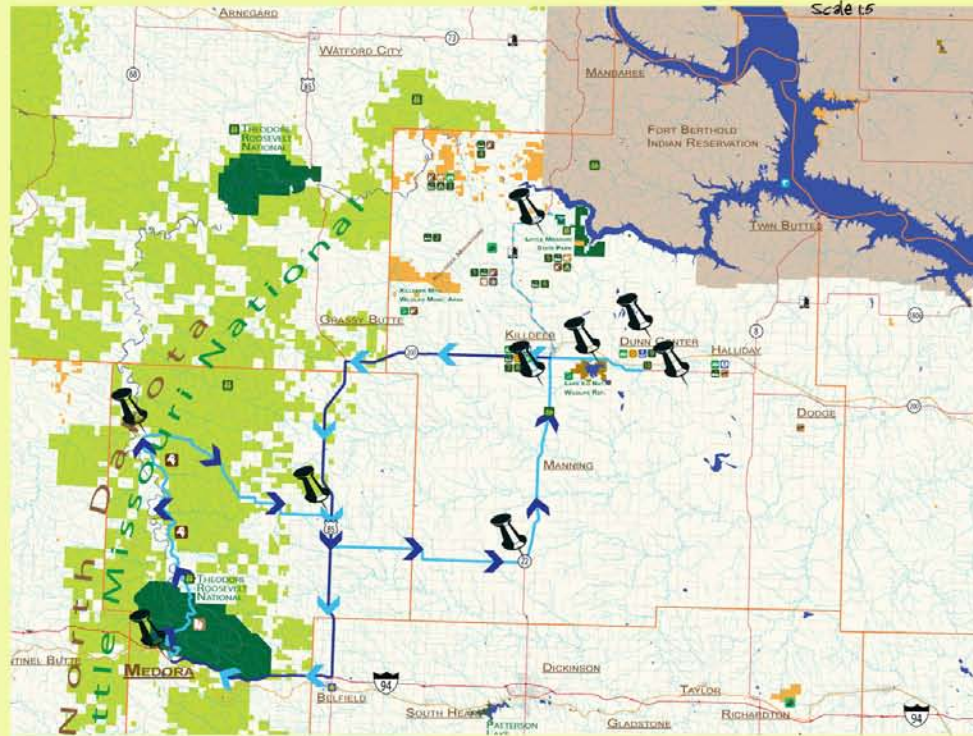
The signage above is a proposed fix for the town of Dunn center. They could take donations from artists to paint the sign and achieve an identity for the small town.



The photo montage above shows how store fronts could be similar to the Buckskin Bar. Just by changing store fronts and signage would fix the overall theme of the town of Killdeer.



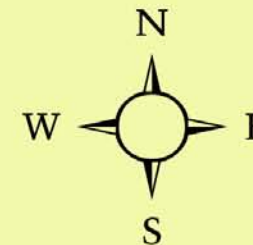
The photo montage to the left shows an addition of wood chips to the paths at the Lake Ito Wildlife Refuge. Rather than moving all of the time, landscape fabric and wood chips would be laid down to save on maintenance. Talking to people in the town, there may be donations to make this happen.



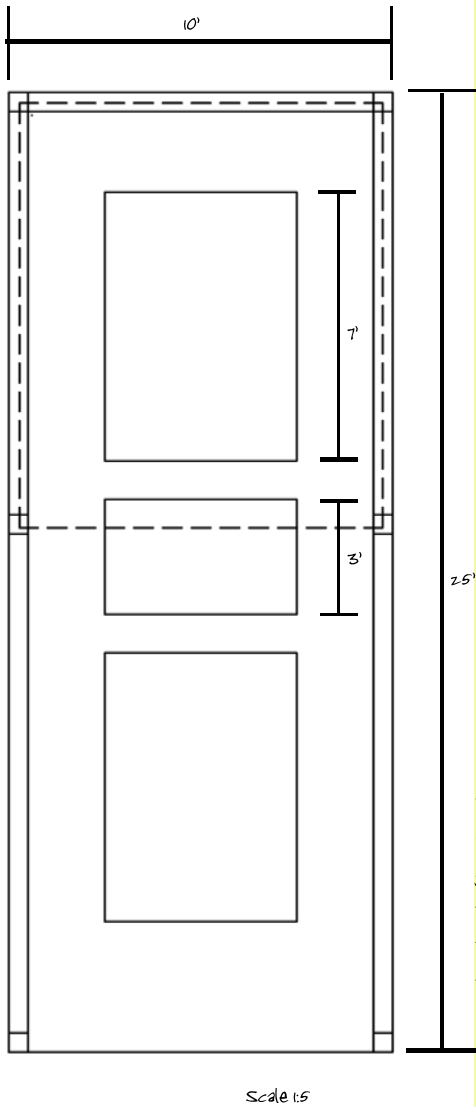
The sign post below shows what could be used along the paths at the Wildlife Refuge.



The image above shows where the best placement of the new signs would be. The places that were chosen are on the itinerary. They are the towns in which we went through as well as a connection to the flint site and the Little Missouri State Park.



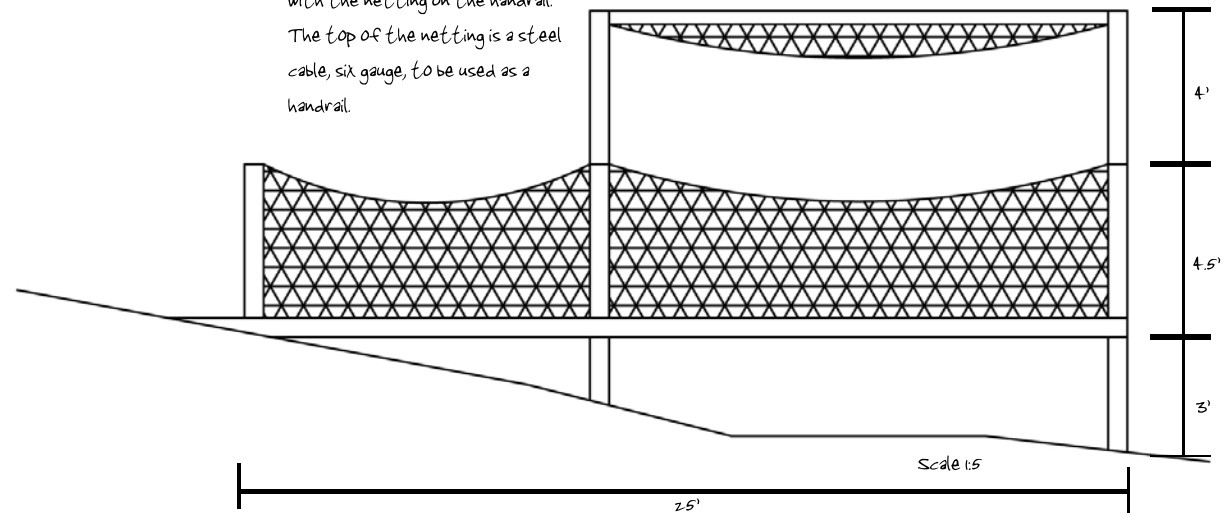




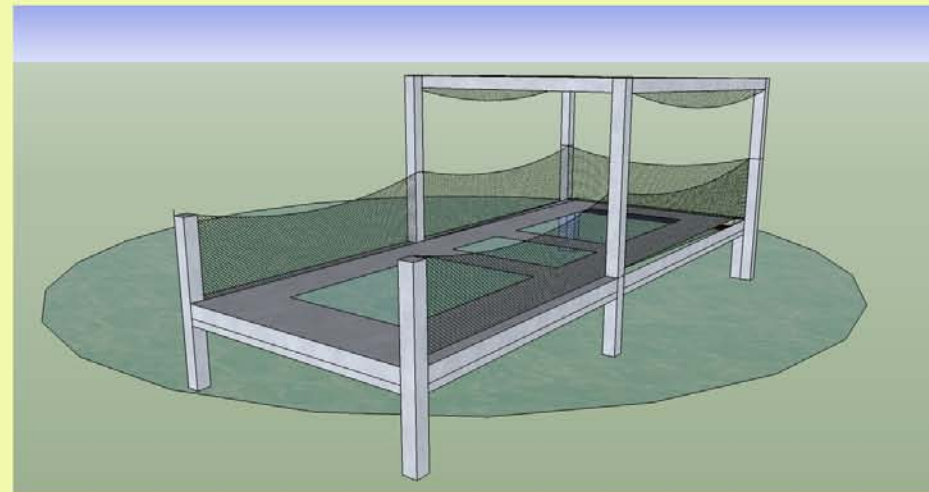
Scale 1:5

The plan shown to the left shows the one way mirror glass that is inserted into the fishing pier for the visitor to view the fish and for the fish to not be disturbed.

The section below shows how the netting on the canopy works with the netting on the handrail. The top of the netting is a steel cable, six gauge, to be used as a handrail.



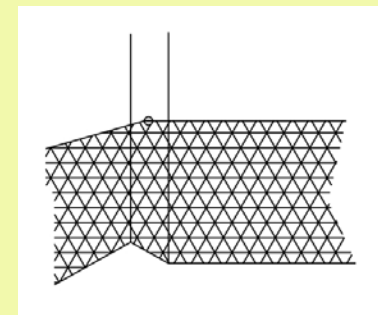
Scale 1:5



The image to the left is a plan of where the fishing piers would be located.



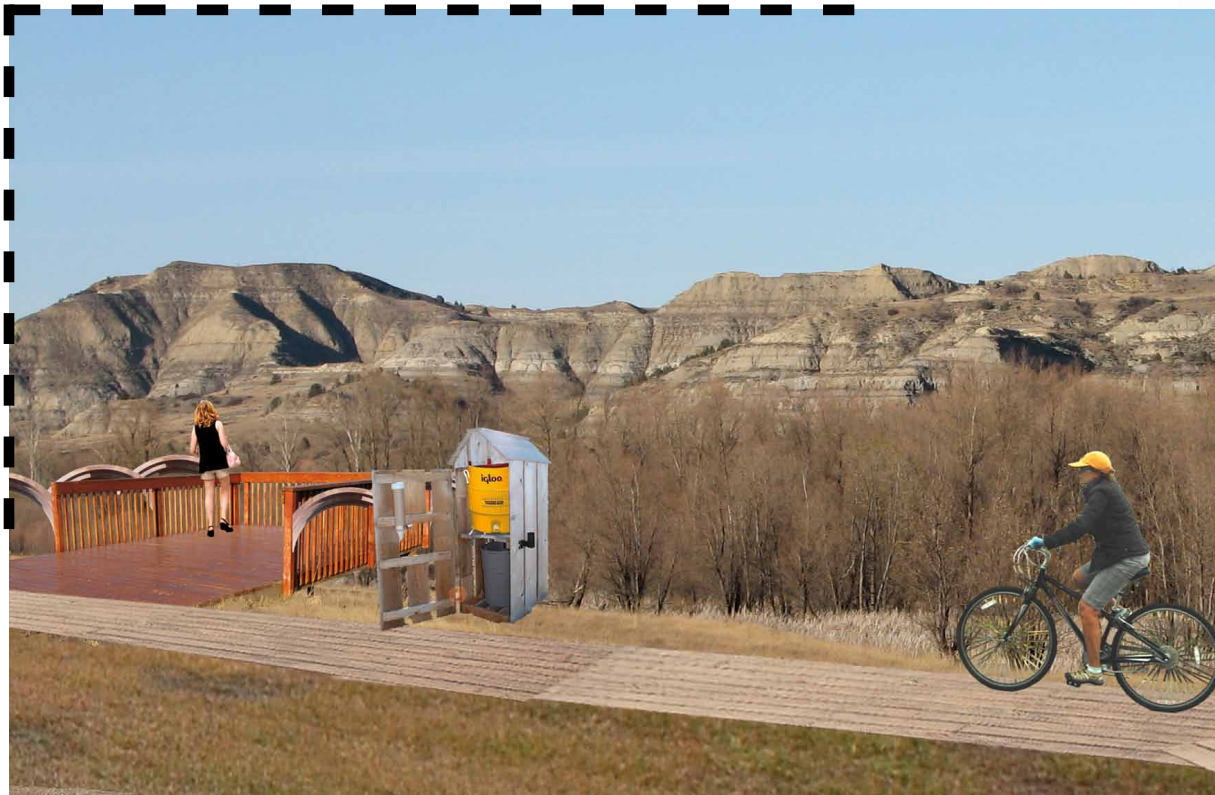
The detail to the right shows how the steel netting is attached with a bolt to the steel frame of the fishing pier itself. The netting that is used is invisinet and is attached to the inside of the posts.



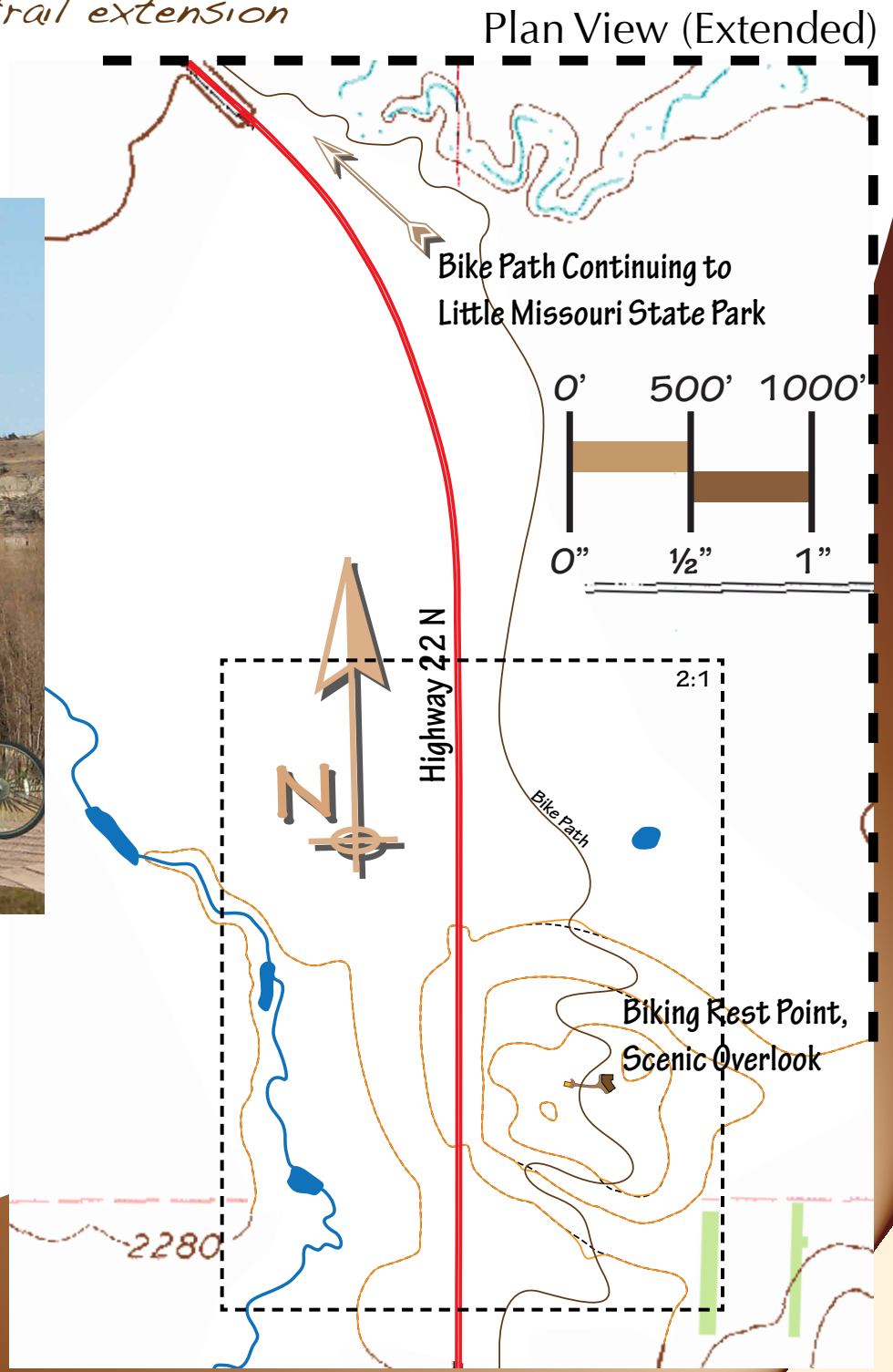


*Killdeer outfitters center and downtown streetscape design  
Nife river flint quarry park and bike trail  
Bike path scenic overlooks and trail extension*

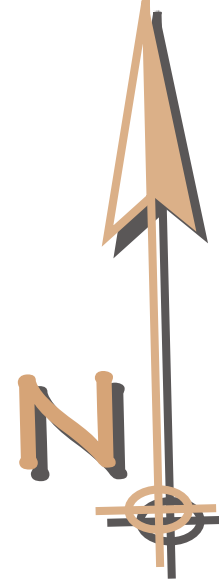
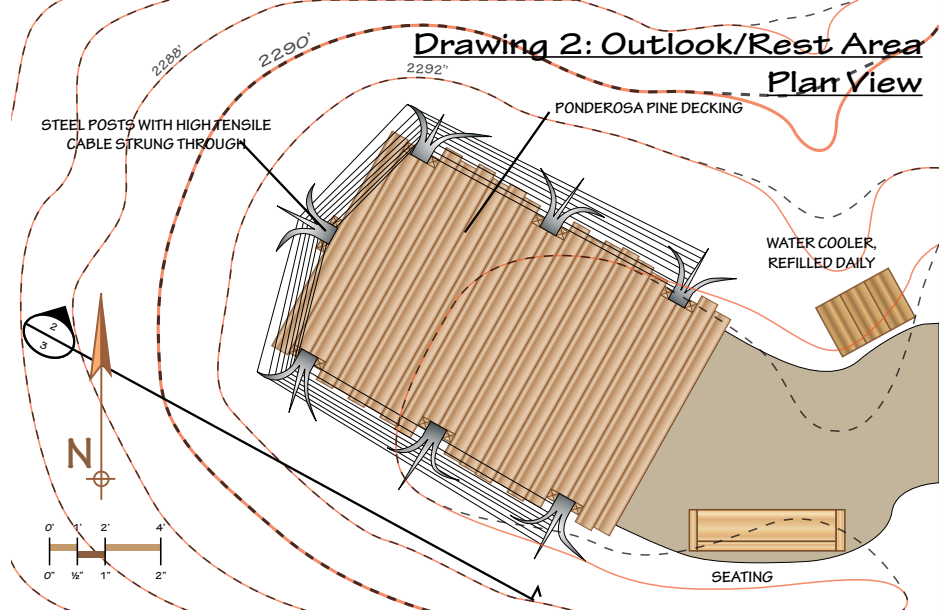
Montage of lookout point concept



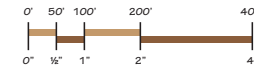
One way to generate more visitors to Killdeer outside of hunting season is through greater incorporation of the outside itself! The Killdeer Mountains, and scenic North Dakota Highway 22, provide an excellent opportunity for those who like to bike, walk, jog, walk their dogs, whatever it may be. The easiest way to accomodate these people is to give them a path. These three proposals incorporate the extension of paths, the increase in connectivity between people while living an active lifestyle. As long as you provide a path wide enough to service passing traffic, you will be in business to provide greater summer and spring activities for visitors.



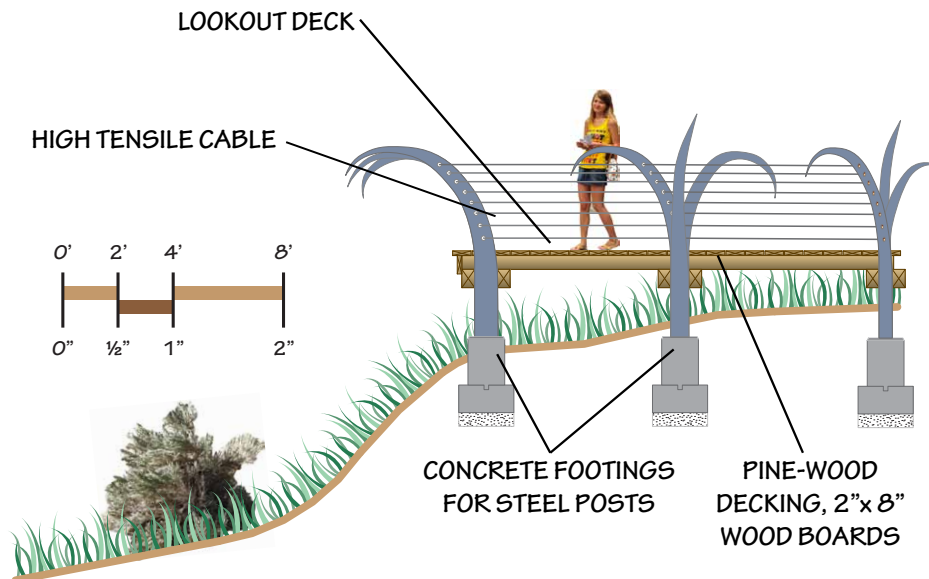




### Drawing 1: Outlook/Rest Area Plan View



In order to visually capture the horizontal qualities of the North Dakota landscape through design I felt that the rest stops for the bike path, especially to the north of Killdeer, should be located on the elevated knolls that dot the landscape. These slight rises in the landscape provide broad views of the landscape, but they should also be designed so that they also celebrate the broadening horizon, hence the bending steel posts.



Drawing 3: Decking Detail

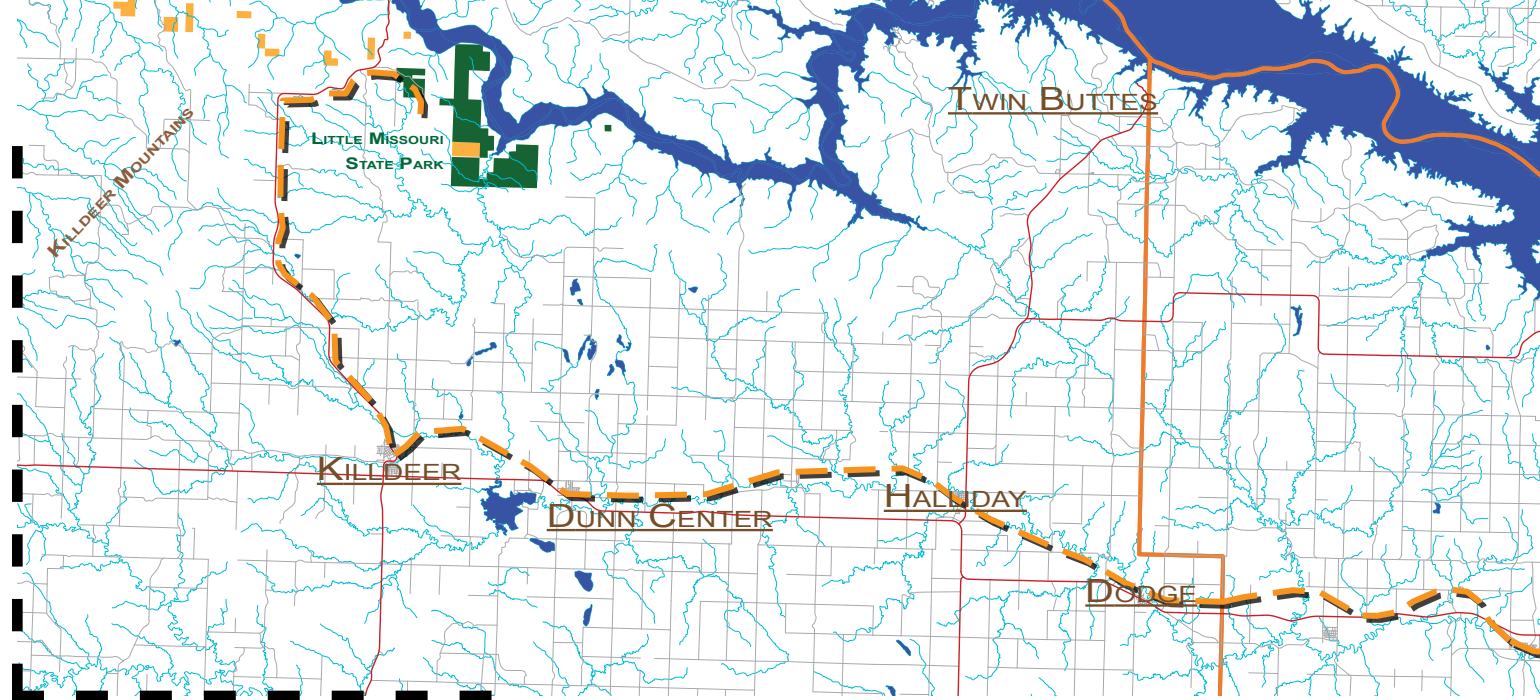




This idea is intended to provide the comfort, familiarity, and safety of having a path near to the highway, but it also explores the creative ways in which can lose itself in the North Dakota countryside.

This route, based on a former rail corridor abandoned in the 1980's, can also serve as an extension to the North Country trail, which is currently underdevelopment in the eastern portion of the state.

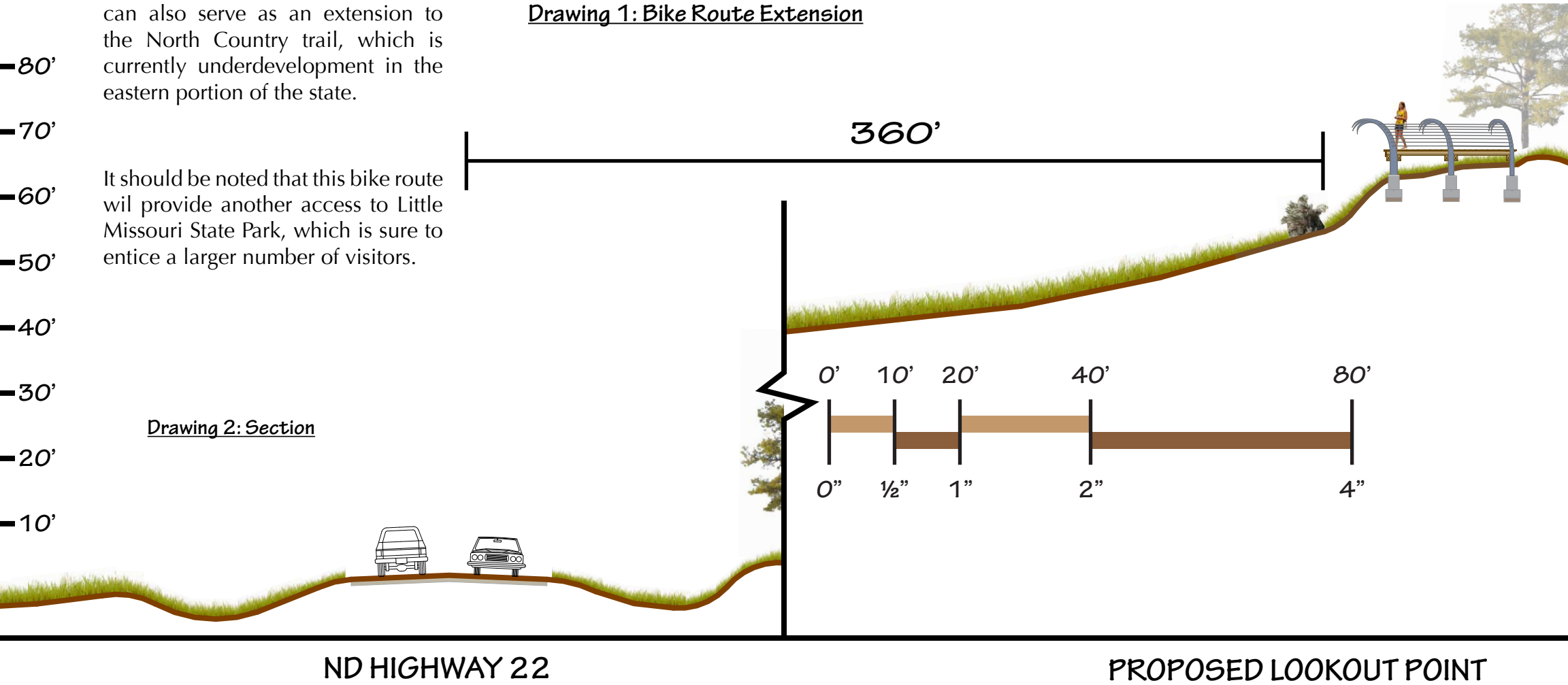
It should be noted that this bike route wil provide another access to Little Missouri State Park, which is sure to entice a larger number of visitors.



**Drawing 1: Bike Route Extension**

80'  
70'  
60'  
50'  
40'  
30'  
20'  
10'

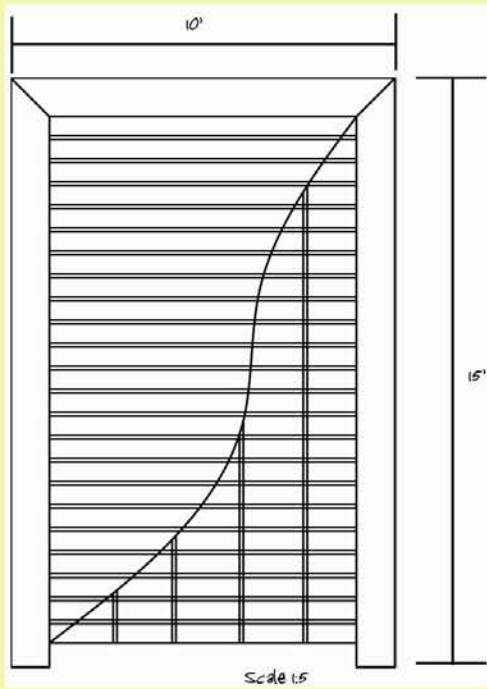
**Drawing 2: Section**



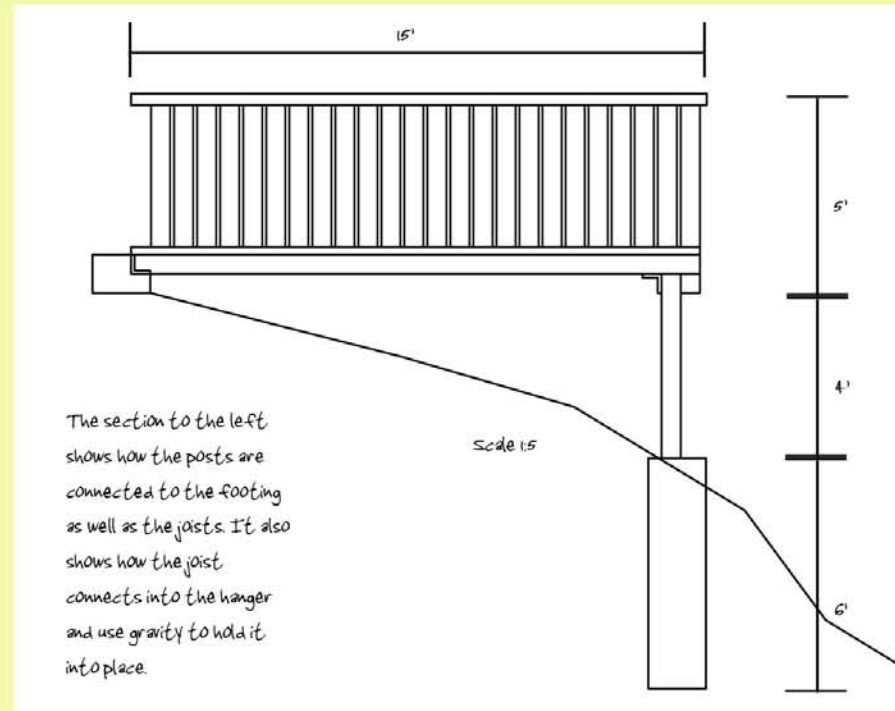
**ND HIGHWAY 22**

**PROPOSED LOOKOUT POINT**



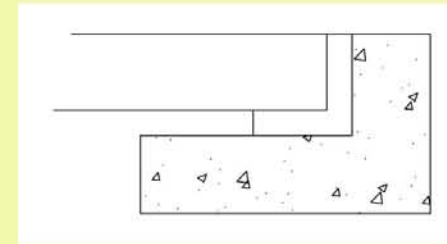


The plan to the left shows where the joists are located under the deck lookout. The lookout is ten feet by fifteen feet.

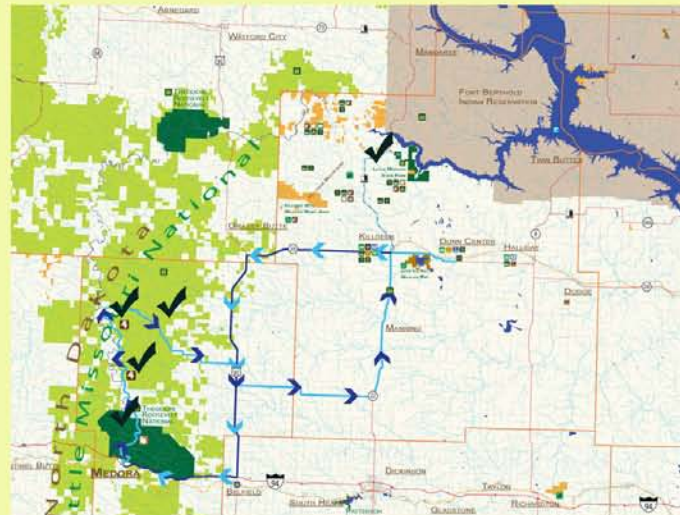


The section to the left shows how the posts are connected to the footing as well as the joists. It also shows how the joist connects into the hanger and use gravity to hold it into place.

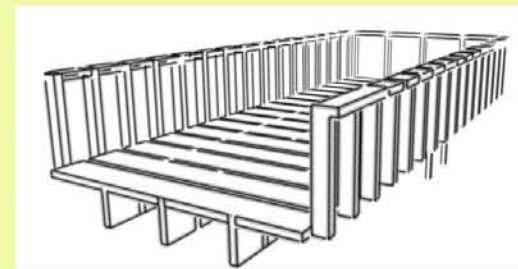
Throughout the grassland area, there is a lack of places to stop and either take in the scenery or to take photos. Adding places like this is ideal to an area where the scenery is the key element of viewing. The design that I chose is a simple wood deck. This would be treated lumber and be made mostly in 2" X 4"s. The joists are 2" X 6" and the post is 10" X 10".



The detail to the right depicts how the joist just sets into the hanger to attach itself to the land.



The image to the left is a plan showing where the lookouts will be placed.





*K*illdeer outfitters center and downtown streetscape design  
*n*ife river flint quarry park and bike trail  
*B*ike path scenic overlooks and trail extension

## Knife River Flint Quarry (Campsites and Cabins) Plan



The Lynch family would like to donate the land a public entity, but I say let's make sure we can use this space when that changeover occurs.

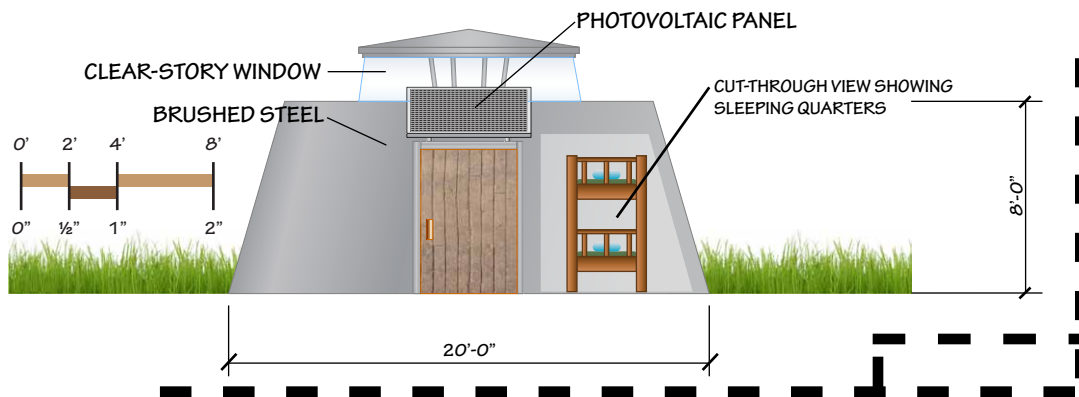
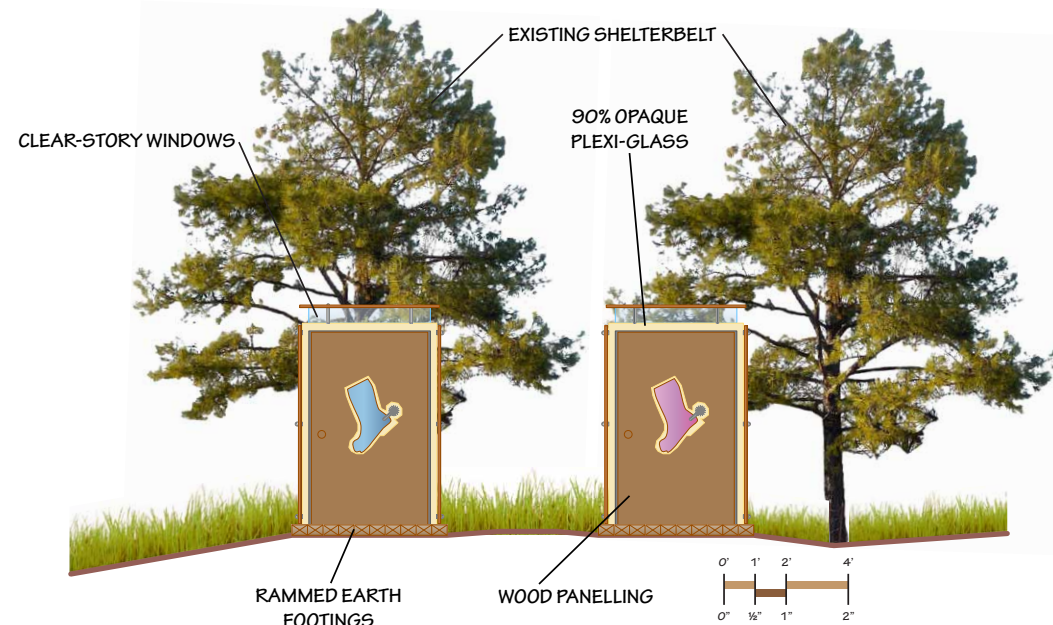
The archaeological site is truly this community's own property to be treasured and shared. When future development of this area becomes more feasible, look to incorporate ways for people to use the site as a rest point along the bike path.





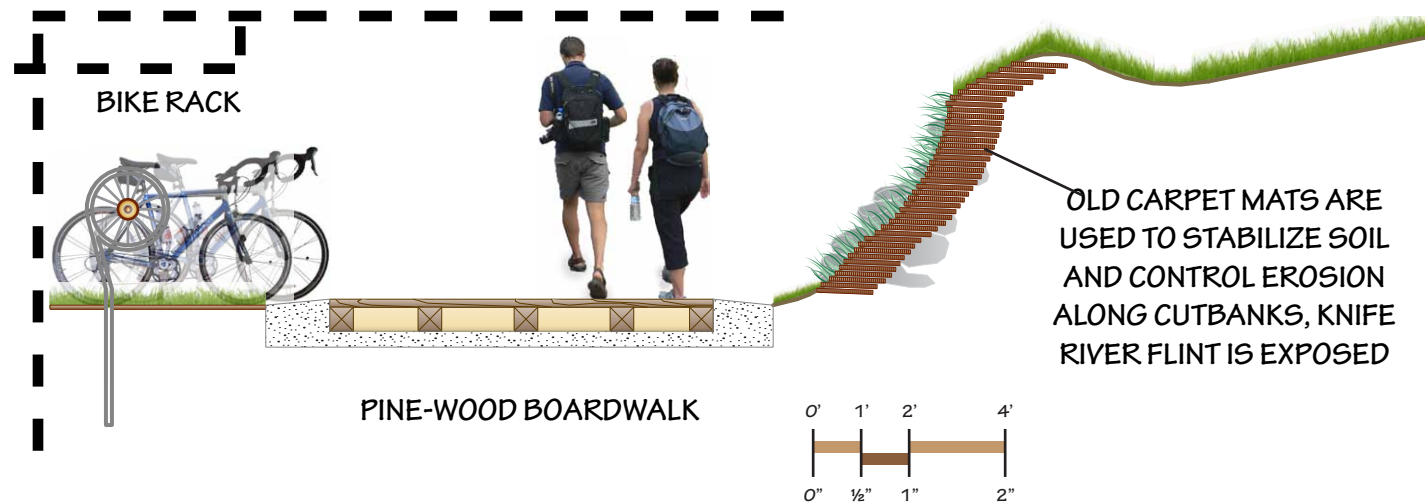
Campers at proposed Knife River Flint Quarry

Drawing 1: Section/Elevation of Proposed Restrooms



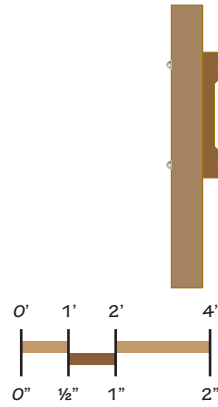
Drawing 2 Elevation of Proposed Lodging Cabins

Drawing 3: Section through Boardwalk

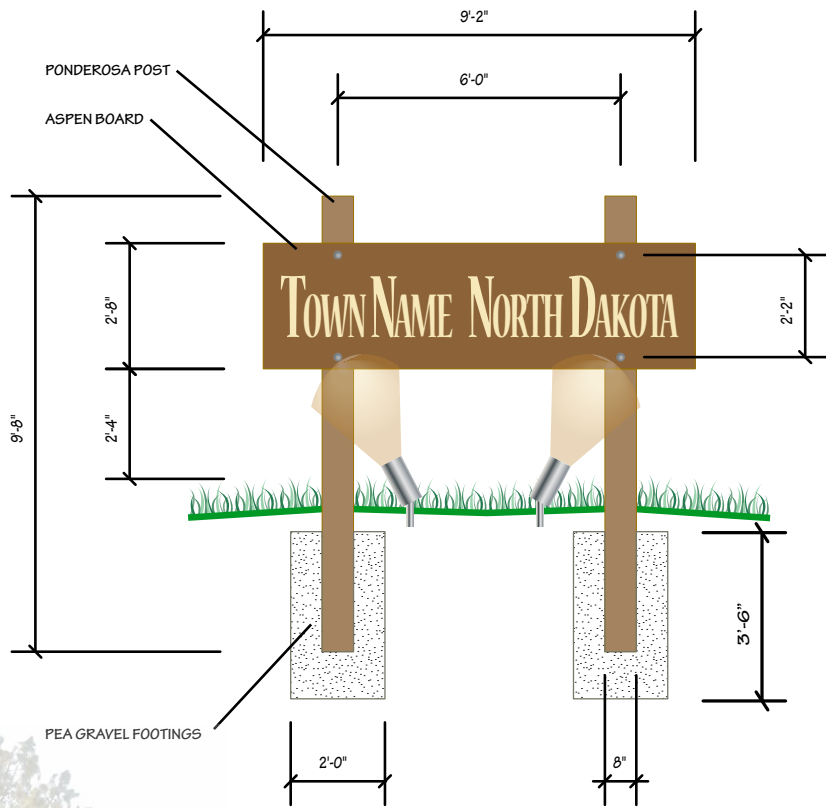




This view here is a cross-sectional cut through the wood boards which will be engraved with the appropriate town's name. The engraving will cut to a depth of 1 inch with a 45 degree bevel angle.



Drawing 1: Lighting Detail

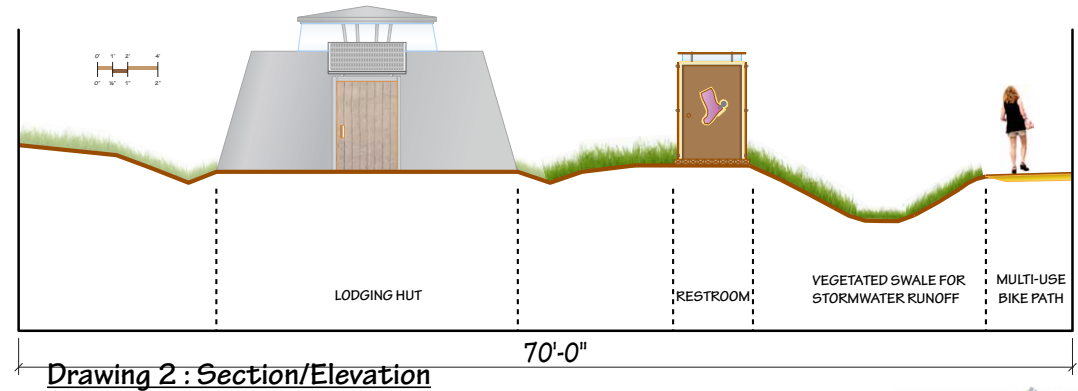


Drawing 3: Section

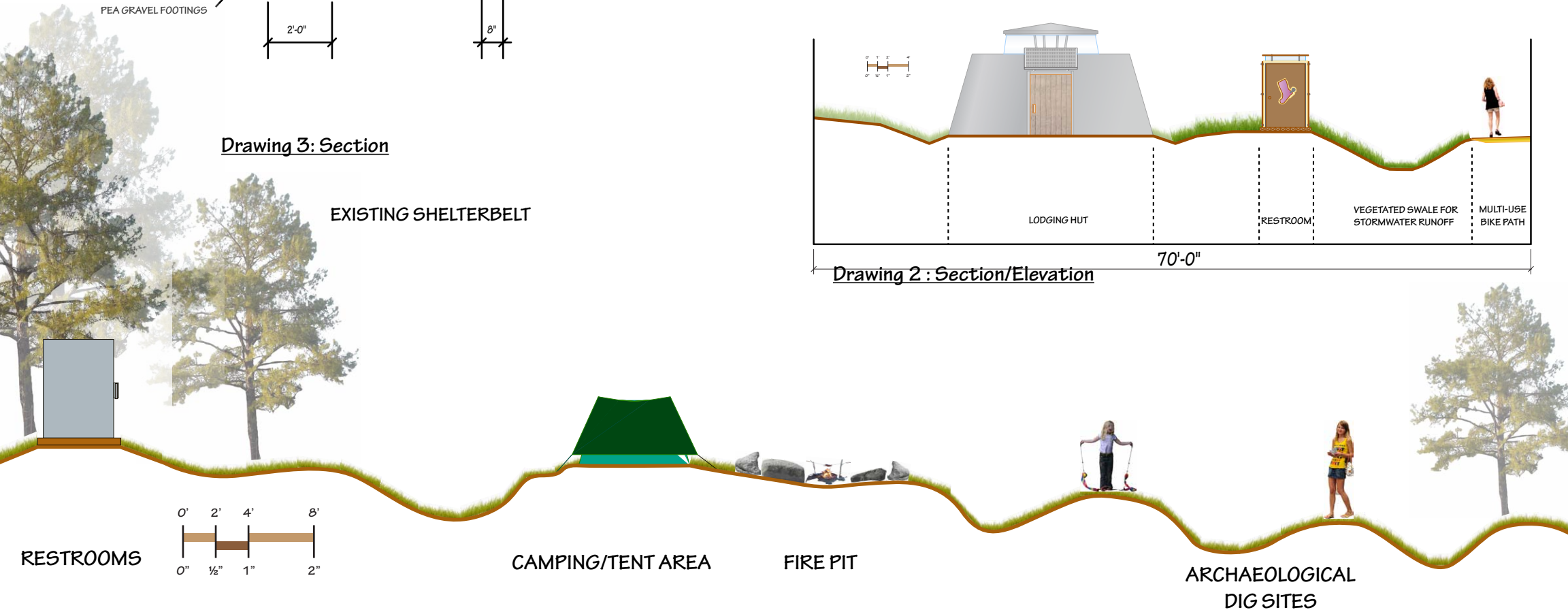
EXISTING SHELTERBELT

The Knife River Flint Quarry offers the area a special opportunity to celebrate more ancient history along with the "new" history as embodied by nature and recreation enthusiasts. The intervention at the flint quarry is meant to be simple, allow people a place to camp that offers a stunning sight a sunset, but also educates them as well. The Mandan and Arikara people took great care in choosing the locations of the earthen lodge homes, and these modern steel and glass emulations of the earthen lodge once again provide the service of shelter on the exposed plain.

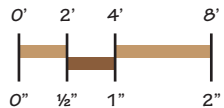
The signage on the left is an idea for a "Knife River Corridor" where each town will produce their own engraved-wood design for an entry sign. The hope is that greater community continuity will be established between the small towns and then greater collaboration can occur on coming up with tourism products for the region. The sign is meant to plant a seed of stylistic and thematic change.



Drawing 2: Section/Elevation



RESTROOMS



CAMPING/TENT AREA

FIRE PIT

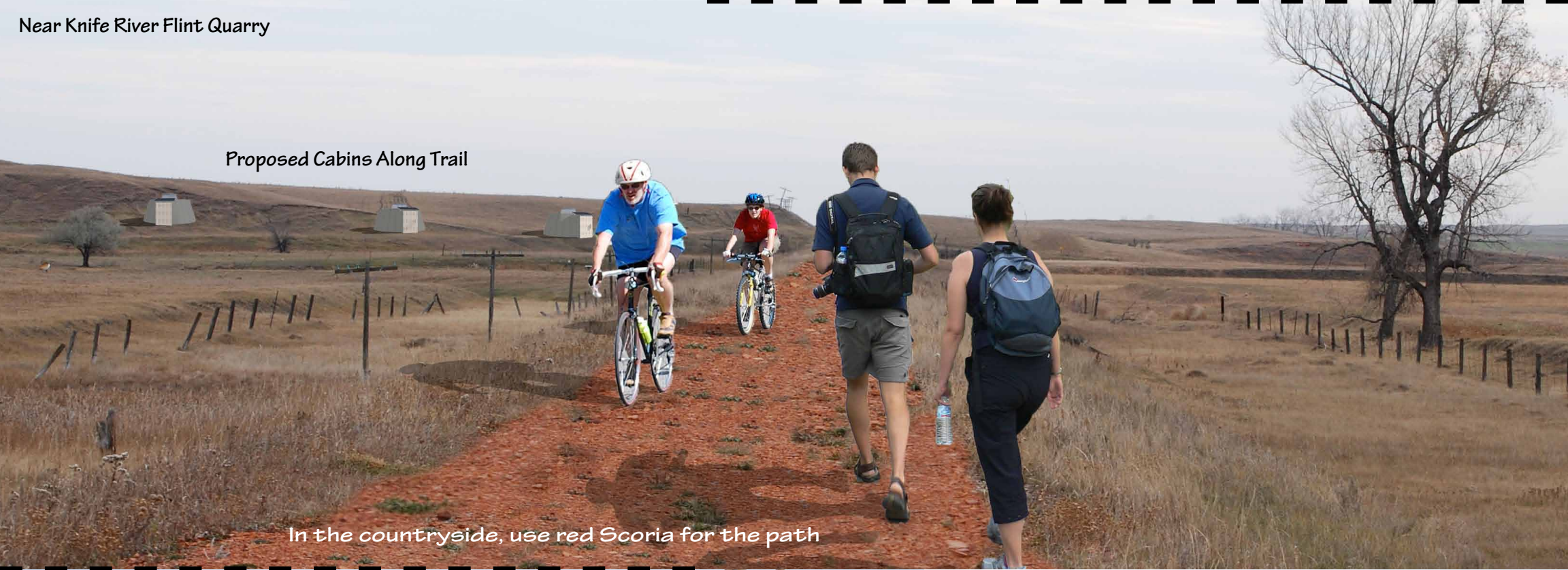
ARCHAEOLOGICAL DIG SITES



# Ideas showing how the bike route slightly changes as you move along it.

Near Knife River Flint Quarry

Proposed Cabins Along Trail



In the countryside, use red Scoria for the path



Dunn Center

Proposed Bike Racks



Halladay



*Killdeer outfitters center and downtown streetscape design  
Life river flint ghyarry park and bike trail  
Bike path scenic overlooks and trail extension*

-If Killdeer is to serve as an outpost in Dunn County, from which all other tourism ventures occur, then Killdeer needs to have a unified streetscape suggestive of a western outpost.

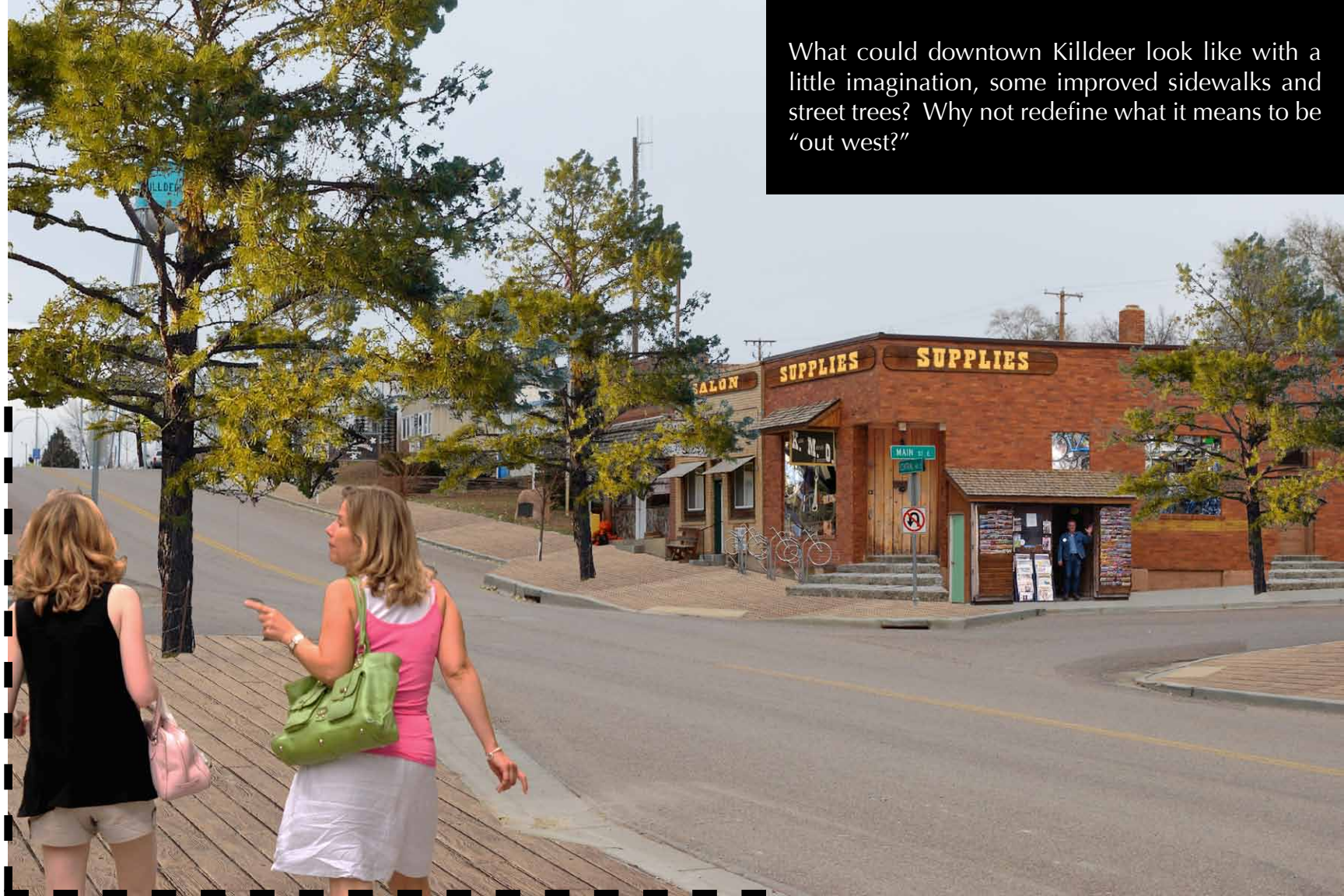
### Killdeer downtown streetscape redesign plan





What change really comes down to is whether a community is willing to change for the sake of something better or not to change because of convenience or expense. Even when we think that we don't have many opportunities to make a GOOD change that the community can rally around, we cannot let this dismay us. Sometimes the catalyst, the intervention for change, is actually simpler than we think. In the case of the abandoned railroad, re-use it, make it a way for people to exercise, get out, and experience the beauty of this state. Give people an ever-so-simple reason to bring a little extra gear with them and they WILL stay longer in your town. And lastly, an investment into business that these tourism products depend on will only increase the quality of your tourism offerings.

Run with it, increasing your town's attraction to visitors IS do-able!



What could downtown Killdeer look like with a little imagination, some improved sidewalks and street trees? Why not redefine what it means to be "out west?"

