

Catálogo de mariposas  
Cañon del río Claro  
San Luis, Antioquia



Kim Garwood & Juan Guillermo Jaramillo V.



# Convenciones



La taxonomía y la secuencia de este catálogo está basado en el Atlas of Neotropical lepidoptera, listado de chequeo parte 4A por Gerardo Lamas, 2004 y en [www.butterfliesofamerica.com](http://www.butterfliesofamerica.com)

La mayoría de fotos fueron tomadas a mariposas vivas en su ambiente natural. Las fotos de especímenes son usadas para mostrar algunas características que no son posibles fotografiar en la naturaleza o para mostrar especies de las cuales aún no tenemos ejemplares vivos, en ese caso ponemos una foto de esta especie tomada en otro país neotropical, indicando en la foto el país donde fue registrada con una abreviación de dos letras. Esta abreviación corresponde al código internacional usado como terminación en internet del código de cada país, ej. Brasil BR, Ecuador EC, Perú PE etc. Las especies fotografiadas en Colombia no tienen el código de país.

Debajo de la foto están el nombre científico y el rango de distribución de la especie con abreviación del nombre de los países de norte a sur, en algunos casos de con especies que están en Estados Unidos y México usamos el código de los estados más al sur donde están las especies TX Texas, CHI Chiapas.

Las fotos serán reemplazadas una vez se tome la foto de estas especies en Colombia, toda colaboración que permita completar el catálogo será bienvenida y el fotógrafo tendrá los créditos.

Nombres científicos con sp y el nombre de una localidad, tienen identificación desconocida, con duda o son especies sin describir por la ciencia, por favor si Usted puede ayudar a completar o corregir escribanos a los contactos.

## Advertencia

Este catálogo hace parte del Catálogo de mariposas de Colombia, es una versión preliminar en proceso de construcción y revisión, generado desde una base de datos, puede tener errores de taxonomía, de autores, de fotógrafos, de ortografía, de distribución geográfica y de códigos o duplicados que deben ser corregidos.

Al ser en un medio electrónico las correcciones son fáciles de hacer, no implican desperdicio de papel y se puede actualizar permanentemente.

Son bienvenidas todas las críticas, sugerencias y correcciones para mejorarlo y corregirlo.

Si desea colaborar tenemos una metodología para hacerlo por favor llame a Juan Guillermo Jaramillo V. al celular 57-3108306732 o escriba al correo [arcas1956@gmail.com](mailto:arcas1956@gmail.com) o a Kim Garwood [kimgarwd@sbcglobal.net](mailto:kimgarwd@sbcglobal.net) o [www.neotropicalbutterflies.com](http://www.neotropicalbutterflies.com)

Todos los errores son responsabilidad de Juan Guillermo Jaramillo V. y Kim Garwood.

## Conventions



Taxonomy and sequence of this catalog is based on the Atlas of Neotropical Lepidoptera, check list of Part 4A by Gerardo Lamas, 2004 and [www.butterfliesofamerica.com](http://www.butterfliesofamerica.com)

Most photos were taken of live butterflies in their natural environment. The photos of specimens are used to display some features that are not possible to photograph in nature. In some cases we have used photos taken in another neotropical country, and in these photos the other country is shown by a two letter abbreviation. This abbreviation corresponds to the international code used as internet country code, eg BR Brazil. The species photographed in Colombia do not have the country code.

Photos will be replaced once the picture is taken of these species in Colombia, any collaboration or contribution of photos that adds to the catalog will be welcome and all photographers will be credited.

Scientific names with the letters sp and the name of a town are used for unknown or unsure id's. If you can help with id's or corrections, please contact the authors.

## Warning

This catalog is part of the checklist of Colombian butterflies, it is a work in progress and is not complete. It is a preliminary version under construction and review, generated from a database. It may contains errors in taxonomy, author, photographers, spelling, geographical distribution and codes or duplicates that must be corrected.

Being an electronic medium, corrections are easy to make. There is nothing printed, and information and id's can be easily updated.

We welcome all criticisms, suggestions, and corrections to improve and correct this work.

If you want to help with this work, please contact Juan Guillermo Jaramillo at cellular 57-3108306732, email [arcas1956@gmail.com](mailto:arcas1956@gmail.com), or Kim Garwood, email [kimgpwd@sbcglobal.net](mailto:kimgpwd@sbcglobal.net) or [www.neotropicalbutterflies.com](http://www.neotropicalbutterflies.com), to learn about our methodology.

All errors are the responsibility of Juan Guillermo Jaramillo V. and Kim Garwood.

## Familias y subfamilias de mariposas

Las mariposas se clasifican en seis familias que agrupan especies con características comunes.

### Hesperiidae

Esta familia de mariposas primitivas tiene como característica las antenas con ganchito en la parte final. Tienen cabeza y cuerpo grueso y muchas tienen colores oscuros o cafés. 4 subfamilias.



**Eudaminae**  
Spreadwing skippers



**Pyrginae**  
Spreadwing skippers



**Pyrginae**  
Firetips



**Heteropterinae**  
Skipperlings



**Hesperiinae**  
Grass Skippers

## Butterfly families and subfamilies

The butterflies are classified into six families comprising species with common characteristics.

### Skippers

Mostly small with stout bodies, fast fliers, skipping or zipping flight. Many are brown or dark, drab colors. A large family, about 30% of all butterflies. Eudaminae and Pyrginae sit with wings spread open, Heteropterinae often sit with wings closed, Hesperiinae often sit in jet plane position. 4 subfamilies.

## Papilionidae

Mariposas grandes, muchas con colas. Vuelan con fortaleza y les gusta posarse en pantanos o zonas húmedas moviendo constantemente las alas. La mayoría son negras con rayas amarillas o negras con parches rojos en las alas posteriores. Las antenas tienen la parte final engrosada y curvada.



**Papilioninae**



**Swallowtails**



## Swallowtails

Mostly large butterflies, many with tails. Strong fliers, they like to mudpuddle on wet dirt with constantly moving, quivering wings. They are mostly black with yellow stripes or black with red patches on the hindwings (Parides). The antenna is bulky and curved at the end.

## Pieridae

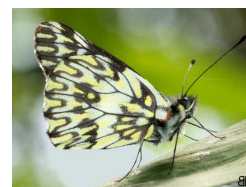
La mayoría de pierides son amarillas, blancas o naranja, aunque hay algunas negras. Las pierides visitan flores y son comunes en jardines, pero las dismorfias prefieren los bosques sombreados. Tienen 3 subfamilias.



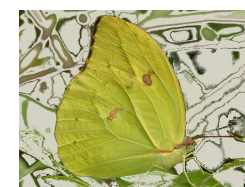
**Dismorphiinae**  
Mimic-Whites



**Pierinae**



**Whites**



**Coliadinae**



**Sulphurs**

## Whites and sulphurs

Mostly white, yellow or orange, but some are black. Whites and Sulphurs like flowers and are often in gardens, but Dismorphiinae like the shaded forest. They have 3 subfamilies.

## Riodinidae

La mayoría de riodínidos se encuentran en tierras bajas, es una familia con mucha variedad. Muchas tienen manchas metálicas y se posan por debajo de las hojas. Algunas tienen colas. Tienen dos subfamilias.

## Metalmarks

More species are found in the lowlands. This is the most varied family; they can come in many shapes, sizes and colors. Some have tails, many do not. Some genera sit with wings closed, some with wings open. They pose under the leaves. They have 2 subfamilies.



Euselasiinae Metalmarks



Riodiniinae



Metalmarks



## Lycaenidae

En general los licénidos son mariposas pequeñas, muchas tienen colas pequeñas para distraer a los predadores. Son difíciles de ver pues muchas viven en el docel. A menudo son azules al abrir las alas. Tienen 2 subfamilias.

## Hairstreaks and blues

Hairstreaks often have tails, but not always. This is the least common of the 6 families, often in the canopy and hard to see. Small butterflies, often brilliant blue above. They have 2 subfamilies.



Polyommatainae Blues



Theclinae



Hairstreaks

## Nymphalidae

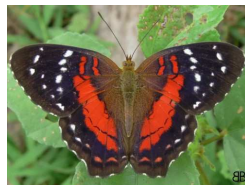
Las nifáidos solo tienen 4 patas visibles, las otras 2 están acortadas y cerca a la cabeza como escobas. Es la familia más abundante y representa 40% del total. Tiene 10 subfamilias.

## Brushfoots

Only show 4 walking legs, the front 2 legs are held up close to the head, like brushes. This is the largest family, about 40%, many subfamilies.



Heliconiinae  
Longwings



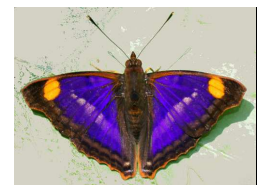
Nymphalinae  
Brushfoots Crescents



Limenitidinae  
Sisters



Charaxinae  
Leafwings



Apaturinae  
Emperors



Satyrinae  
Satyrs, Morphos



Danainae  
Clearwings



Danainae  
Monarchs



Cyrestinae  
Daggerwings



Biblidinae  
Tropicals

## Hesperiidae

### Skippers

#### Eudaminae

#### Spreadwing Skippers

Se posan con las alas abiertas, muchas tienen colas y puntos o rayas en las alas delanteras.

Sit with wings open, many have tails and spots or stripes on the forewing.



*Aguna albistria leucogramma*



*Astrartes apastus apastus*



*Astrartes apastus apastus*



*Astrartes apastus apastus*



*Astrartes enotrus*



*Astrartes enotrus*



*Astrartes enotrus*



*Astrartes enotrus*



*Astrartes enotrus*



*Astraptes enotrus* MX-PG



*Astraptes fulgerator* Tx-AR



*Astraptes fulgerator* Tx-AR



*Astraptes fulgerator* Tx-AR



*Astraptes fulgerator* Tx-AR



*Astraptes fulgerator* Tx-AR



*Astraptes fulgerator* Tx-AR



*Astraptes fulgerator* Tx-AR



*Autochton longipennis* MX-BR



*Autochton longipennis* MX-BR



*Autochton longipennis* MX-BR



*Autochton neis* MX-PG



*Autochton neis* MX-PG



*Autochton neis* MX-PG



*Autochton neis* MX-PG



*Chrysoplectrum epicincea* MX-CO



*Epargyreus clavicornis tenda* MX-EC



*Epargyreus clavicornis tenda* MX-EC



*Epargyreus clavicornis tenda* MX-EC



*Epargyreus clavicornis tenda* MX-EC



*Narcosius sp rioclaro*



*Narcosius sp rioclaro*



*Narcosius sp rioclaro*



*Nascus phocus* MX-PG





*Phanus grandis* NI-VZ



*Phanus grandis* NI-VZ



*Phanus grandis* NI-VZ



*Phanus grandis* NI-VZ



*Phanus vitreus* MX-BR



*Phanus vitreus* MX-BR



*Phanus vitreus* MX-BR



*Phocides pigmalion pigmalion* CO-SU



*Phocides pigmalion pigmalion* CO-SU



*Phocides pigmalion pigmalion* CO-SU



*Phocides pigmalion pigmalion* CO-SU



*Phocides pigmalion pigmalion* CO-SU



*Phocides pigmalion pigmalion* CO-SU



*Phocides pigmalion pigmalion* CO-SU



*Polygonus savigny savigny* Tx-AR



*Polygonus savigny savigny* Tx-AR



*Polygonus savigny savigny* Tx-AR



*Polygonus savigny savigny* Tx-AR



*Polythrix ceculus* CO?



*Polythrix ceculus* CO?



*Salatis sp rioclaro*



*Telemiades avitus* MX-BR



*Telemiades avitus* MX-BR



*Telemiades avitus* MX-BR



*Telemiades avitus* MX-BR



*Telemiades epicalus* PN-BR



*Telemiades epicalus* PN-BR



*Telemiades epicalus* PN-BR



*Telemiades epicalus* PN-BR



*Telemiades squanda* CO-BR



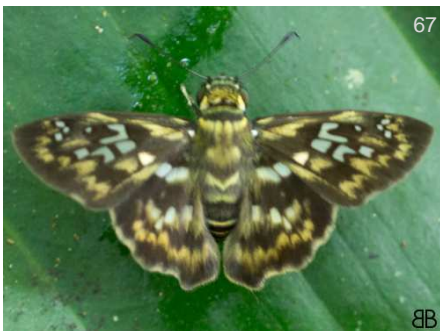
*Typhedanus undulatus* Tx-AR



*Typhedanus undulatus* Tx-AR



*Typhedanus undulatus* Tx-AR



*Udranomia kikkawai* MX-BR



*Udranomia kikkawai* MX-BR



*Urbanus dorantes dorantes* US-AR



*Urbanus dorantes dorantes* US-AR



*Urbanus dorantes dorantes* US-AR



*Urbanus dorantes dorantes* US-AR



*Urbanus doryssus doryssus* Chia-BR



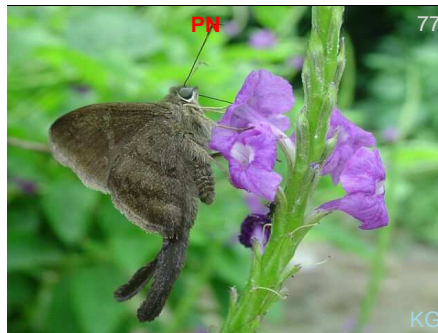
*Urbanus doryssus doryssus* Chia-BR



*Urbanus simplicius* Tx-AR



*Urbanus simplicius* Tx-AR



*Urbanus simplicius* Tx-AR



*Urbanus simplicius* Tx-AR



*Urbanus simplicius* Tx-AR



*Urbanus teleus* Tx-AR



*Urbanus teleus* Tx-AR



*Urbanus teleus*

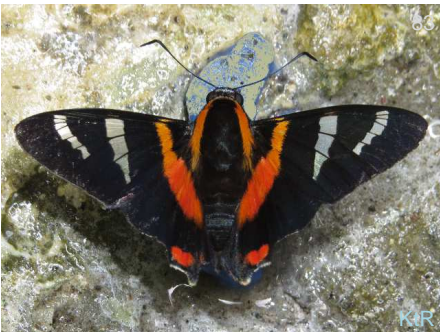
Tx-AR

## Pyrginae

### Spreadwing Skippers

Se posan con las alas abiertas, en la tribu Pyrrhopygine muchos tienen punta roja en el abdomen.

Tribe Pyrrhopygini/Golf-club Skippers or Firetips – sit with wings open, some have red tips to abdomen. Tip of antennae bent over at 90 degree angle, like a golf club. Powerful fliers, strong bodies and wings, can buzz you. Some very colorful. Other spr



*Aspitha leander*

MX-CO



*Myscelus amystis amystis*

CO-VZ,TR



*Passova ganymedes ganymedes*

CO



*Pyrrhopyge phidias phidias*

CO-PG



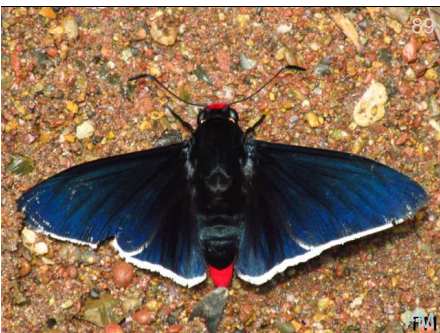
*Pyrrhopyge phidias phidias*

CO-PG



*Pyrrhopyge phidias phidias*

CO-PG



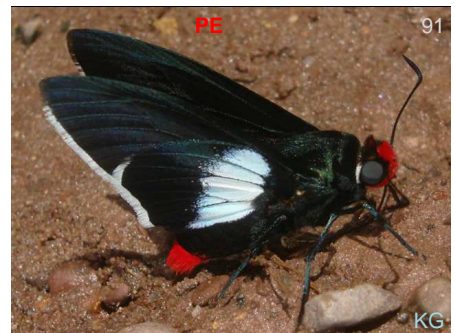
*Pyrrhopyge phidias phidias*

CO-PG



*Pyrrhopyge phidias phidias*

CO-PG



*Pyrrhopyge phidias phidias*

CO-PG



*Pyrrhopyge phidias phidias* CO-PG



*Pyrrhopyge phidias phidias* CO-PG



*Zonia zonia panamensis* BL-CO



*Celaenorrhinus eligius eligius* CR-AR



*Celaenorrhinus eligius eligius* CR-AR



*Celaenorrhinus monartus* MX-BR



*Celaenorrhinus monartus* MX-BR



*Cyclosemia anastomosis* MX-EC



*Cyclosemia anastomosis* MX-EC



*Cyclosemia anastomosis* MX-EC



*Cyclosemia anastomosis* MX-EC



*Cyclosemia anastomosis* MX-EC



*Gorgopas chlorocephala chlorocephala*



*Gorgopas chlorocephala chlorocephala*



*Gorgopas chlorocephala chlorocephala*



*Gorgopas chlorocephala chlorocephala*



*Myrinia laddeyi*

CO-EC



*Nisoniades brunneata*

CO-FG



*Nisoniades brunneata*

CO-FG



*Nisoniades brunneata*

CO-FG



*Nisoniades brunneata*

CO-FG



*Nisoniades brunneata*

CO-FG



*Pachyneuria duidae*

CO-VZ



*Pachyneuria duidae*

CO-VZ



*Pachyneuria duidae* CO-VZ



*Pachyneuria duidae* CO-VZ



*Pachyneuria duidae* CO-VZ



*Pellicia arina* TX-CO



*Viola egra* CO



*Viola egra* CO



*Anastrus luctuosus* -CO, BR?



*Anastrus neaeris neaeris* MX-EC



*Anastrus neaeris neaeris* MX-EC



*Anastrus neaeris neaeris* MX-EC



*Anastrus neaeris neaeris* MX-EC



*Anastrus neaeris neaeris* MX-EC





128

KG

*Camptopleura auxo*

MX-PG

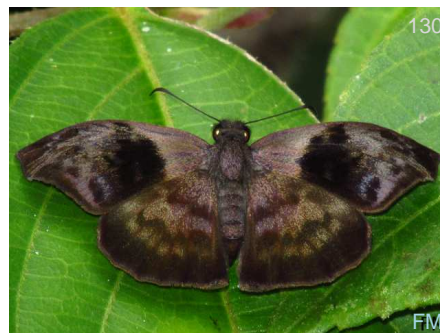


129

KG

*Camptopleura impressus*

PN-BR

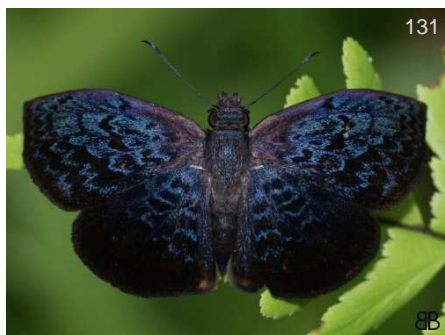


130

FM

*Camptopleura impressus*

PN-BR



131

BB

*Cycloglypha enega*

NI-BR

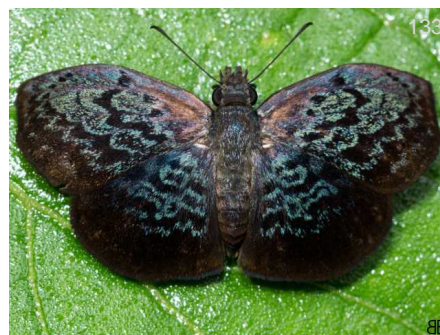


132

BB

*Cycloglypha enega*

NI-BR



133

BB

*Cycloglypha enega*

NI-BR



134

BB

*Cycloglypha enega*

NI-BR



135

BB

*Cycloglypha enega*

NI-BR



136

BB

*Cycloglypha enega*

NI-BR



137

BB

*Cycloglypha enega*

NI-BR



138

FM

*Cycloglypha enega*

NI-BR



139

BB

*Cycloglypha enega*

NI-BR



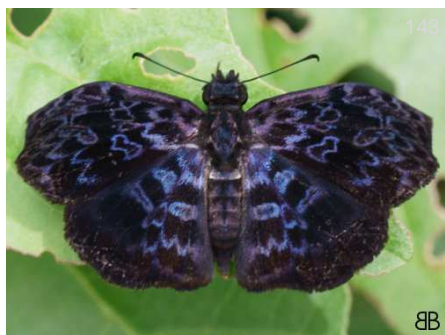
*Cycloglypha thrasibulus thrasibulus* MX-PG



*Cycloglypha thrasibulus thrasibulus* MX-PG



*Cycloglypha thrasibulus thrasibulus* MX-PG



*Cycloglypha thrasibulus thrasibulus* MX-PG



*Cycloglypha thrasibulus thrasibulus* MX-PG



*Cycloglypha thrasibulus thrasibulus* MX-PG



*Cycloglypha thrasibulus thrasibulus* MX-PG



*Cycloglypha thrasibulus thrasibulus* MX-PG



*Ebrietas anacreon anacreon* MX-AR



*Ebrietas anacreon anacreon* MX-AR



*Ebrietas anacreon anacreon* MX-AR



*Ebrietas osyris* MX-EC



*Ebrietas osyris*

MX-EC



*Ebrietas osyris*

MX-EC



*Gorgythion begga begga*

DvG



*Gorgythion begga begga*

BB



*Gorgythion begga begga*

BB



*Gorgythion begga begga*

BB



*Gorgythion begga begga*

DvG



*Gorgythion begga begga*

DvG



*Gorgythion begga begga*

DvG



*Gorgythion begga begga*

DvG



*Helias cama*

FM



*Helias cama*

FM



*Helias cama*



*Helias cama*



*Helias cama*



*Helias godmani*



*Helias godmani*



*Helias godmani*



*Helias godmani*



*Mylon maimon*



*Mylon maimon*



*Mylon maimon*



*Mylon maimon*



*Mylon maimon*



*Sostrata pusilla pusilla* pper Amz



*Sostrata pusilla pusilla* pper Amz



*Sostrata pusilla pusilla* pper Amz



*Achlyodes busirus* MX-BO



*Achlyodes busirus* MX-BO



*Achlyodes busirus* MX-BO



*Achlyodes pallida* Tx-BO



*Achlyodes pallida* Tx-BO



*Achlyodes pallida* Tx-BO



*Achlyodes pallida* Tx-BO



*Achlyodes pallida* Tx-BO



*Aethilla echina echina* MX-BR



188

*Eantis thraso*

Chia-AR



189

*Eantis thraso*

Chia-AR



190

*Eantis thraso*

Chia-AR



191

*Eantis thraso*

Chia-AR



192

*Eantis thraso*

Chia-AR



193

*Milanion hemes hemes*



194

*Milanion hemes hemes*



195

*Milanion hemes hemes*



196

*Milanion hemes hemes*



197

*Milanion hemes hemes*



198

*Milanion hemes hemes*



199

*Ouleus fridericus*

CO-BR



*Ouleus fridericus* CO-BR



*Ouleus fridericus* CO-BR



*Ouleus fridericus* CO-BR



*Ouleus fridericus* CO-BR



*Pythonides grandis assecla* MX-PE



*Pythonides grandis assecla* MX-PE



*Pythonides proxenus* MX-EC



*Pythonides proxenus* MX-EC



*Pythonides proxenus* MX-EC



*Pythonides proxenus* MX-EC



*Pythonides proxenus* MX-EC



*Pythonides proxenus* MX-EC



212 *Quadrus cerialis* MX-AR BB



213 *Quadrus cerialis* MX-AR BB



214 *Quadrus cerialis* MX-AR BB



215 *Quadrus cerialis* MX-AR BB



216 *Zera tetrastigma tetrastigma* pper Amz BB



217 *Zera tetrastigma tetrastigma* pper Amz KG



218 *Zera tetrastigma tetrastigma* pper Amz KG



219 *Anisochoria pedalioidina polysticta* CR-GU BB



220 *Anisochoria pedalioidina polysticta* CR-GU BB



221 *Anisochoria pedalioidina polysticta* CR-GU FM



222 *Anisochoria pedalioidina polysticta* CR-GU EC KG



223 *Carrhenes lilloi* BB CO-EC





*Carrhenes lilloi* CO-EC



*Carrhenes lilloi* CO-EC



*Carrhenes lilloi* CO-EC



*Carrhenes lilloi* CO-EC



*Carrhenes lilloi* CO-EC



*Carrhenes lilloi* CO-EC



*Carrhenes lilloi* CO-EC



*Heliopetes alana*



*Heliopetes alana*



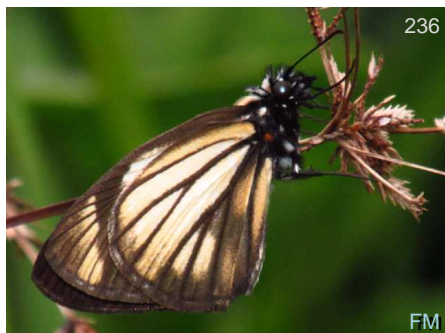
*Heliopetes alana*



*Heliopetes alana*



*Heliopetes alana*



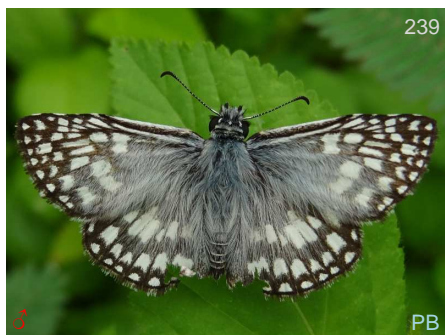
*Heliopetes alana*



*Pyrgus orcus*



*Pyrgus orcus*



*Pyrgus orcus*



*Pyrgus orcus*



*Pyrgus orcus*



*Pyrgus orcus*



*Pyrgus orcus*



*Pyrgus orcus*



*Staphylus chlorocephala*



*Staphylus sp rioClaro x*



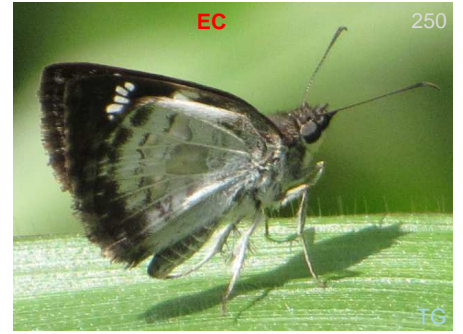
*Xenophanes tryxus*



*Xenophanes tryxus* Tx-AR



*Xenophanes tryxus* Tx-AR



*Xenophanes tryxus* Tx-AR



*Xenophanes tryxus* Tx-AR

## Hesperiinae

### Grass Skippers

Sit in 'jet plane' position, with forewings straight up and hindwings out flat. Many are orange and black, or brown. Many can only be separated by genitalic dissection. Small butterflies, some like flowers in gardens, some like shaded forest.



*Aides dysoni* MX-CO



*Aides dysoni* MX-CO



*Aroma aroma* NI-BR



*Calpodès ethlius* US-AR



*Calpodès ethlius* US-AR

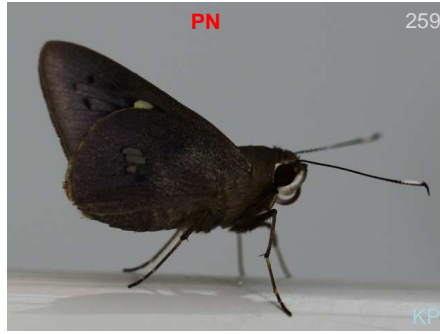


*Calpodès ethlius* US-AR



*Calpodus ethlius*

US-AR



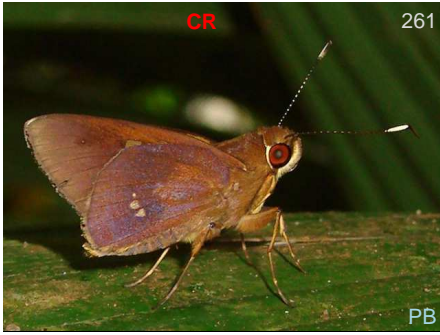
*Carystoides basoches*

MX-PG



*Carystoides sicania orbius*

X-PR, GU



*Carystoides sicania orbius*

X-PR, GU



*Carystoides sicania orbius*

X-PR, GU



*Carystoides sp rioClaro*

DvG



*Carystus phorcus phorcus*

MX-AR



*Carystus superbiens*

CO-BR



*Cobalus fiducula*

MX-CO



*Neoxeniades braesia aqua*

CO



*Neoxeniades braesia aqua*

CO



*Neoxeniades braesia aqua*

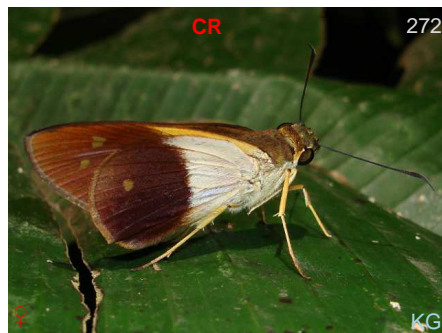
CO



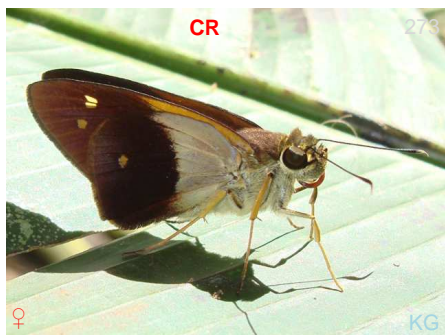
*Orphe vatinius* CR-BR



*Panoquina evadnes* MX-AR



*Saliana esperi esperi* MX-BR



*Saliana esperi esperi* MX-BR



*Saliana esperi esperi* MX-BR



*Saliana hewitsoni* MX-BO



*Saliana longirostris* MX-BR



*Saliana longirostris* MX-BR



*Saliana longirostris* MX-BR



*Saliana severus* MX-EC



*Saliana severus* MX-EC



*Saliana severus* MX-EC



*Saliana severus* MX-EC



*Saliana severus* MX-EC



*Saliana severus* MX-EC



*Saliana severus* MX-EC



*Saliana triangularis* MX-AR



*Saliana triangularis* MX-AR



*Saliana triangularis* MX-AR



*Talides alternata* MX-BR



*Talides alternata* MX-BR



*Talides alternata* MX-BR



*Talides alternata* MX-BR



*Thracides nida* CO



*Thracides nida* CO



*Thracides nida* CO



*Thracides phidon* MX-BR



*Thracides phidon* MX-BR



*Thracides phidon* MX-BR



*Tromba xanthura* MX-CO



*Anthoptus epictetus* MX-AR



*Anthoptus epictetus* MX-AR



*Anthoptus epictetus* MX-AR



*Anthoptus epictetus* MX-AR



*Anthoptus epictetus* MX-AR



*Anthoptus epictetus* MX-AR



306  
*Anthoptus epictetus* MX-AR



307  
*Anthoptus epictetus* MX-AR



308  
*Anthoptus epictetus* MX-AR



309  
*Anthoptus epictetus* MX-AR



310  
*Anthoptus epictetus* MX-AR



311  
*Anthoptus epictetus* MX-AR



312  
*Anthoptus epictetus* MX-AR



313  
*Callimormus radiola radiola* MX-BR



314  
*Callimormus radiola radiola* MX-BR



315  
*Enosis sp rioclaro*



316  
*Justinia justinianus*



317  
*Naevolus orius orius* MX-BR





*Naevolus orius orius* MX-BR



*Naevolus orius orius* MX-BR



*Naevolus orius orius* MX-BR



*Naevolus orius orius* MX-BR



*Naevolus orius orius* MX-BR



*Naevolus orius orius* MX-BR



*Niconiades nikko* MX-PG



*Niconiades nikko* MX-PG



*Phanes aletes* MX-BR



*Phanes aletes* MX-BR



*Remella remus* MX-PG



*Remella remus* MX-PG



*Remella remus* MX-PG BB



*Remella remus* MX-PG LEM BB



*Remella remus* MX-PG BB



*Remella remus* MX-PG BB



*Remella remus* MX-PG FM BB



*Remella remus* MX-PG BB



*Remella remus* MX-PG BB



*Vehilius sp x pnivel 4* BB



*Vehilius stictomenes stictomenes* CO-BR BB



*Vehilius stictomenes stictomenes* CO-BR BB



*Vehilius stictomenes stictomenes* CO-BR BB



*Vehilius stictomenes stictomenes* CO-BR BB



*Vehilius stictomenes stictomenes* CO-BR



*Vehilius stictomenes stictomenes* CO-BR



*Vehilius stictomenes stictomenes* CO-BR



*Vehilius stictomenes stictomenes* CO-BR



*Vehilius stictomenes stictomenes* CO-BR



*Vehilius stictomenes stictomenes* CO-BR



*Vehilius stictomenes stictomenes* CO-BR



*Vehilius stictomenes stictomenes* CO-BR



*Vehilius stictomenes stictomenes* CO-BR



*Vehilius stictomenes stictomenes* CO-BR



*Vehilius stictomenes stictomenes* CO-BR



*Vehilius stictomenes stictomenes* CO-BR



*Molo mango*



*Molo mango*



*Molo mango*



*Molo mango*



*Molo mango*



*Nyctelius nyctelius nyctelius*



*Nyctelius nyctelius nyctelius*



*Nyctelius nyctelius nyctelius*



*Nyctelius nyctelius nyctelius*



*Nyctelius nyctelius nyctelius*



*Nyctelius nyctelius nyctelius*



*Nyctelius nyctelius nyctelius*



*Nyctelius nyctelius nyctelius*

Tx-AR



*Pemiades pohli cidra*

CO-ED

## Papilionidae

### Swallowtails

#### Papilioninae

#### Swallowtails



*Heraclides anchisiades anchisiades*



*Heraclides anchisiades anchisiades*



*Heraclides anchisiades anchisiades*



*Heraclides anchisiades anchisiades*



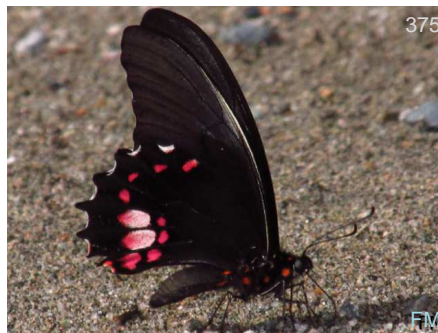
*Heraclides anchisiades anchisiades*



*Heraclides anchisiades anchisiades*



*Heraclides anchisiades anchisiades*



*Heraclides anchisiades anchisiades*



*Heraclides paeon thrason*



*Heraclides paeon thrason*



*Heraclides paeon thrason*



*Heraclides thoas nealces*



*Heraclides thoas nealces*



*Heraclides thoas nealces*



*Heraclides thoas nealces*



*Heraclides thoas nealces*



*Heraclides thoas nealces*



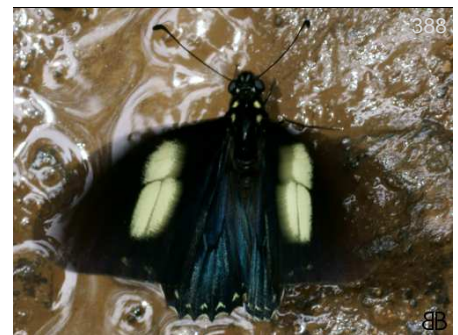
*Mimoides ilus ilus*



*Mimoides pausania cleombrotus*



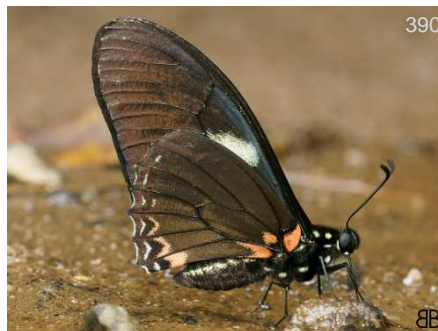
*Mimoides pausania cleombrotus*



*Mimoides pausania cleombrotus*



*Mimoides pausania cleombrotus*



*Mimoides pausania cleombrotus*



*Mimoides pausania cleombrotus*



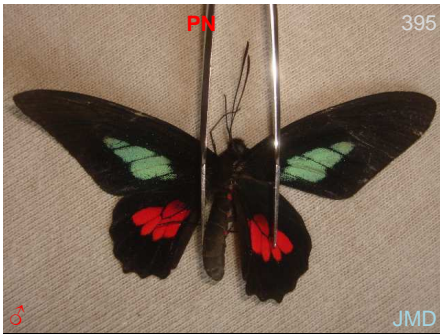
*Parides erithalion erithalion*



*Parides erithalion erithalion*



*Parides erithalion erithalion*



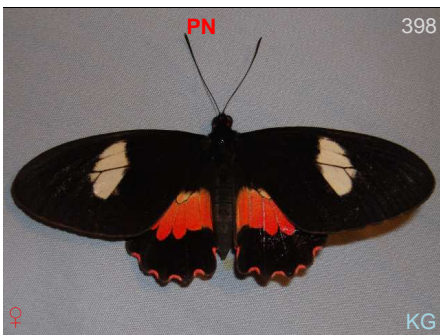
*Parides eurimedes*



*Parides eurimedes*



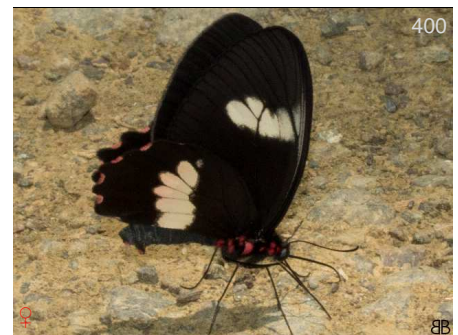
*Parides eurimedes*



*Parides eurimedes*



*Parides eurimedes*



*Parides eurimedes*



*Parides eurimedes arriphus*



*Parides eurimedes arriphus*



*Parides eurimedes arriphus*





*Parides eurimedes arriphus*



*Parides eurimedes arriphus*



*Parides eurimedes arriphus*



*Parides iphidamas phalias*



*Parides iphidamas phalias*



*Parides sesostris tarquinios*



*Parides sesostris tarquinios*



*Parides sesostris tarquinios*



*Parides sesostris tarquinios*



*Parides sesostris tarquinios*



*Parides sesostris tarquinios*



*Parides sesostris tarquinios*



*Parides sesostris tarquinios*



*Parides sesostris tarquinios*



*Parides sesostris tarquinios*



*Parides sesostris tarquinios*



*Pterourus zagreus*



*Pterourus zagreus*



*Pterourus zagreus*

## Pieridae

### Whites and Sulphurs

#### Dismorphiinae

##### Mimic-Whites

Odd shaped forewings, smaller butterflies, prefer shaded areas. They are pale yellow or white with black marking on the dorsals. Females have rounder forewings. Sit with wings closed.



*Moschoneura pinthous*



*Moschoneura pinthous*



*Moschoneura pinthous*



*Moschoneura pinthous*



*Moschoneura pinthous*

#### Pierinae

##### Whites

Variable, many are white but some are black with narrow white, yellow or even red patches. Many species of Catasticta are very difficult to separate from a live ventral photo. They like to come to wet sand or edges of flowing water. Sit with wings closed.



*Cunizza hirlanda serda*



*Cunizza hirlanda serda*



*Cunizza hirlanda serda*



431

*Glutophrissa drusilla drusilla*



432

*Glutophrissa drusilla drusilla*



433

*Glutophrissa drusilla drusilla*

## Coliadinae

### Sulphurs

Some large, but most are medium to smaller sizes. Common in meadows and gardens, roadside edges. Difficult to separate to species just on ventral live photos, you often need to see the pattern of the black on the edges of the upper wings. Sit with wings c



434

*Aphrissa statira statira*



435

*Aphrissa statira statira*



436

*Aphrissa statira statira*



437

*Aphrissa statira statira*



438

*Eurema albula albula*



439

*Phoebis argante argante*



440

*Phoebis argante argante*



441

*Phoebis argante argante*



442

*Phoebis argante argante*



*Phoebis argante argante*



*Phoebis argante argante*



*Phoebis argante argante*



*Phoebis philea philea*



*Phoebis philea philea*



*Phoebis philea philea*



*Phoebis philea philea*



*Phoebis philea philea*



*Phoebis philea philea*



*Phoebis philea philea*



*Phoebis sennae marcellina*



*Phoebis sennae marcellina*



*Phoebis sennae marcellina*



*Phoebis sennae marcellina*



*Phoebis sennae marcellina*



*Rhabdodryas trite trite*



*Rhabdodryas trite trite*

## Riodinidae

### Metalmarks

#### Riodininae

#### Metalmarks



*Leucochimona icare*



*Leucochimona icare*



*Leucochimona icare*



*Leucochimona icare*



*Leucochimona icare*



*Leucochimona lagora*



*Leucochimona lagora*



*Leucochimona lagora*



*Leucochimona lagora*



*Leucochimona lagora*



*Leucochimona lagora*



*Leucochimona lagora*



*Mesosemia asa iphigenia*



*Mesosemia asa iphigenia*



*Mesosemia asa iphigenia*



*Mesosemia asa iphigenia*



*Mesosemia asa iphigenia*



*Mesosemia asa iphigenia*



*Mesosemia asa iphigenia*



*Mesosemia pacifica*



*Mesosemia pacifica*



*Mesosemia pacifica*



*Mesosemia pacifica*



*Mesosemia pacifica*





*Mesosemia pacifica*



*Mesosemia pacifica*



*Mesosemia pacifica*



*Mesosemia pacifica*



*Mesosemia pacifica*



*Mesosemia pacifica*



*Mesosemia sp RioClaro*



*Mesosemia sp RioClaro*



*Mesosemia sp RioClaro 1*



*Mesosemia sp RioClaro 1*



*Mesosemia sp RioClaro 1*



*Mesosemia zonalis*



*Mesosemia zonalis*



*Perophtalma tullius*



*Perophtalma tullius*



*Perophtalma tullius*



*Perophtalma tullius*



*Perophtalma tullius*



*Perophtalma tullius*



*Perophtalma tullius*



*Eurybia cyclopia cyclopia*



*Eurybia donna*



*Eurybia donna*



*Eurybia donna*



*Eurybia donna*



*Eurybia lycisca*



*Eurybia lycisca*



*Eurybia nicaeus nicaeus*



*Eurybia nicaeus nicaeus*



*Eurybia nicaeus nicaeus*



*Eurybia nicaeus nicaeus*



*Eurybia nicaeus nicaeus*



*Eurybia nicaeus nicaeus*



*Eurybia nicaeus nicaeus*



*Eurybia nicaeus nicaeus*



*Eurybia unxia*



*Ancyluris inca huascar*



*Ancyluris inca huascar*



*Ancyluris inca huascar*



*Ancyluris inca huascar*



*Ancyluris inca huascar*



*Ancyluris inca huascar*



*Ancyluris inca huascar*



*Ancyluris jurgensenii atahualpa*



*Ancyluris jurgensenii atahualpa*



*Ancyluris jurgensenii atahualpa*



*Ancyluris jurgensenii atahualpa*



*Ancyluris jurgensenii atahualpa*



*Calephelis iris*



*Calephelis iris*



*Calephelis iris*



*Calephelis iris*



*Calephelis iris*



*Calephelis iris*



*Calephelis iris*



*Calephelis iris*



*Calephelis iris*



*Calephelis iris*



*Calephelis iris*



*Calephelis iris*



*Calephelis iris*



*Calephelis iris*



*Calephelis iris*



*Caria castalia*



*Caria castalia*



*Caria castalia*



*Caria castalia*



*Caria mantinea lampeto*



*Caria mantinea lampeto*



*Caria mantinea lampeto*



*Caria mantinea lampeto*



*Caria mantinea lampeto*



*Caria mantinea lampeto*



*Caria rhacotis*



*Caria rhacotis*



*Caria rhacotis*



*Caria rhacotis*



*Caria rhacotis*



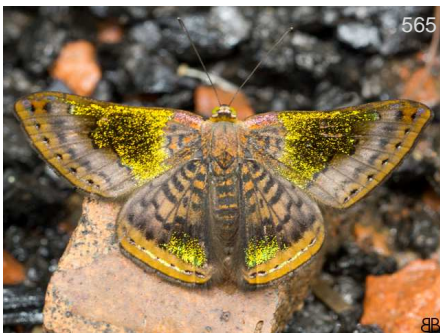
*Caria rhacotis*



*Caria rhacotis*



*Caria rhacotis*



*Caria rhacotis*



*Caria rhacotis*



*Caria rhacotis*



*Cariomothis poeciloptera*



*Cariomothis poeciloptera*



*Cariomothis poeciloptera*



*Chalodeta chaonitis*



*Chalodeta chaonitis*



*Chalodeta chaonitis*



*Chalodeta lypera*



*Chalodeta lypera*



*Chalodeta lypera*



*Chalodeta lypera*



*Chalodeta lypera*



*Chalodeta lypera*





*Chalodeta lypera*



*Charis anius*



*Charis anius*



*Charis anius*



*Chorinea bogota*



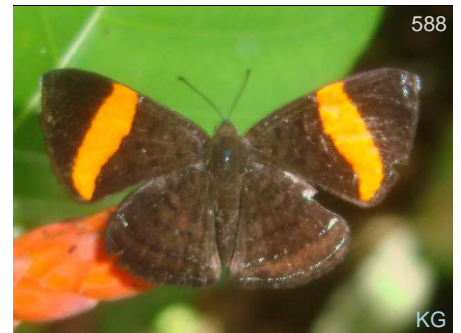
*Chorinea bogota*



*Crocozona pheretima*



*Crocozona pheretima*



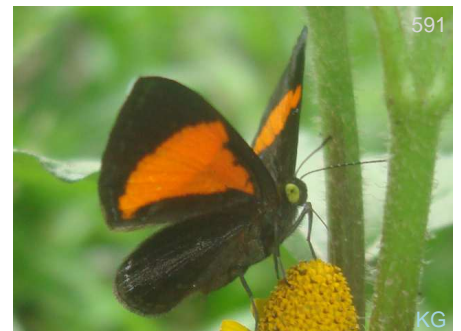
*Crocozona pheretima*



*Crocozona pheretima*



*Crocozona pheretima*



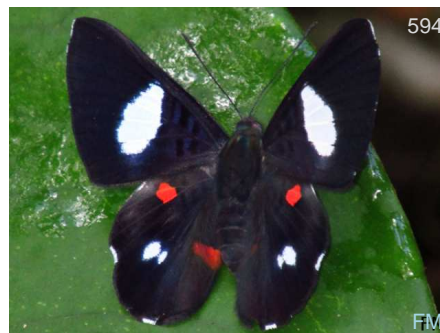
*Crocozona pheretima*



*Cyrenia martia themis*



*Cyrenia martia themis*



*Cyrenia martia themis*



*Detritivora barnesi*



*Detritivora barnesi*



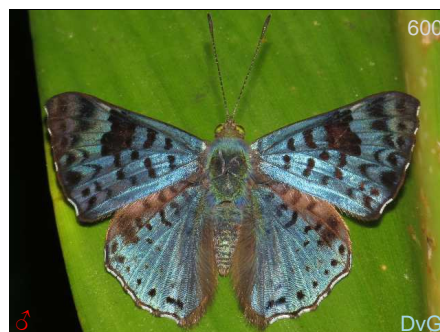
*Detritivora barnesi*



*Detritivora barnesi*



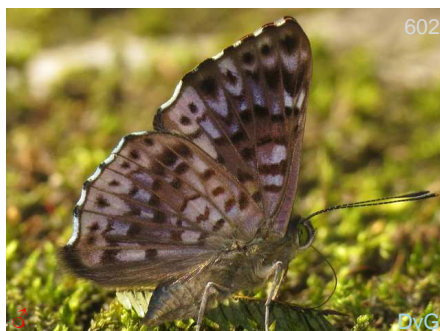
*Detritivora barnesi*



*Lasaia agesilas agesilas*



*Lasaia agesilas agesilas*



*Lasaia agesilas agesilas*



*Lasaia agesilas agesilas*



*Lasaia agesilas agesilas*



*Lasaia agesilas agesilas*



*Lasaia agesilas agesilas*



*Lasaia agesilas agesilas*



*Lasaia agesilas agesilas*



*Lasaia agesilas agesilas*



*Lasaia agesilas agesilas*



*Lasaia agesilas agesilas*



*Lasaia meris*



*Lasaia meris*



*Lyropteryx apollonia diana*



*Lyropteryx apollonia diana*



*Lyropteryx lyra cleadas*



*Lyropteryx lyra cleadas*



*Lyropteryx lyra cleadas*



*Lyropteryx lyra cleadas*



*Lyropteryx lyra cleadas*



*Melanis electron*



*Melanis electron*



*Melanis electron*



*Melanis electron*



*Melanis electron*



*Metacharis victrix*



*Metacharis victrix*



*Metacharis victrix*



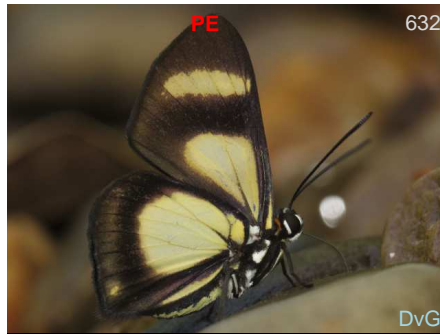
*Metacharis victrix*



*Monethe albertus*



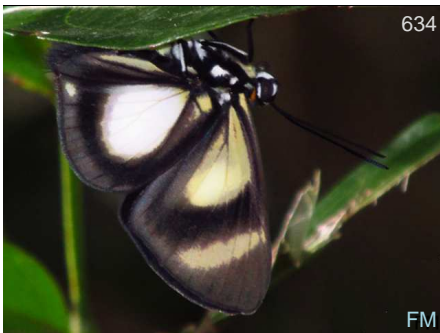
*Monethe albertus*



*Monethe albertus*



*Monethe albertus*



*Monethe albertus*



*Pachythone gigas ignifer*



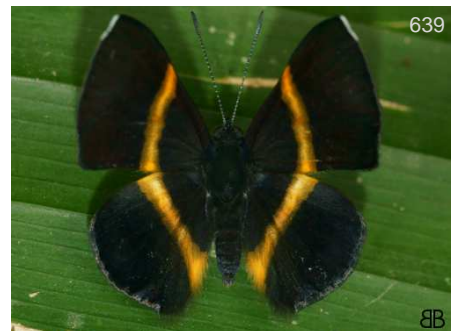
*Pachythone gigas ignifer*



*Parcella amarynthina*



*Parcella amarynthina*



*Parcella amarynthina*



*Parcella amarynthina*



*Parcella amarynthina*



*Parcella amarynthina*



*Parcella amarynthina*



*Pheles strigosa strigosa*



*Pheles strigosa strigosa*



*Pheles strigosa strigosa*



*Rhetus periander*



*Rhetus periander*



*Rhetus periander*



*Rhetus periander*



*Rhetus periander*



*Rhetus periander*



*Rhetus periander*



*Rhetus periander*



*Rhetus periander*



*Rhetus periander*



*Rhetus periander*



*Rhetus periander*



*Thisbe irenea belides*



*Thisbe irenea belides*



*Thisbe irenea belides*



*Thisbe irenea belides*



*Thisbe irenea belides*



*Thisbe irenea belides*



*Thisbe irenea belides*



*Thisbe irenea belides*



*Thisbe irenea belides*



*Thisbe lycorias*



*Thisbe lycorias*



*Mesene phareus*



*Mesene phareus*



*Mesene phareus*



*Mesene phareus*



*Mesene phareus*



*Anteros allectus allectus*





676

DvG

*Anteros allectus allectus*



677

KG

*Anteros allectus allectus*



678

BB

*Anteros formosus formosus*



679

BB

*Anteros formosus formosus*



680

BB

*Anteros formosus formosus*



681

BB

*Anteros formosus formosus*



682

BB

*Anteros formosus formosus*



683

DvG

*Anteros kupris kupris*



684

BB

*Anteros kupris kupris*



685

BB

*Anteros kupris kupris*



686

BB

*Anteros kupris kupris*



687

DvG

*Anteros kupris kupris*



688

*Sarota acantus*



689

*Sarota acantus*



690

*Sarota neglecta*



691

*Sarota neglecta*



692

*Sarota neglecta*



693

*Emesis fatimella nobilata*



694

*Emesis fatimella nobilata*



695

*Emesis fatimella nobilata*



696

*Emesis lucinda*



697

*Emesis lucinda*



698

*Emesis lucinda*



699

*Emesis lupina lupina*



*Emesis lupina lupina*



*Emesis lupina lupina*



*Emesis lupina lupina*



*Emesis lupina lupina*



*Emesis lupina lupina*



*Emesis lupina lupina*



*Emesis mandana mandana*



*Emesis mandana mandana*



*Emesis mandana mandana*



*Emesis mandana mandana*



*Emesis mandana mandana*



*Emesis mandana mandana*



*Emesis mandana mandana*



*Emesis mandana mandana*



*Emesis tenedia*



*Emesis tenedia*



*Nymphidium azanoides occidentalis*



*Nymphidium azanoides occidentalis*



*Nymphidium azanoides occidentalis*



*Nymphidium mantus*



*Nymphidium mantus*



*Nymphidium mantus*



*Nymphidium sp rioclaro*



*Synargis calyce*



*Synargis calyce*



*Synargis calyce*



*Synargis calyce*



*Synargis calyce*



*Theope sp pedias-devriesi*



*Theope sp pedias-devriesi*



*Theope virgilius*

## Euselasiinae

### Metalmarks

Se posan casi siempre por debajo de las hojas en posición hacia abajo. De colores cafés y cremas.

They sit in the leaves in upright position. Brown and cream colors.



*Euselasia aurantiaca* [n. ssp.]



*Euselasia candaria*



*Euselasia candaria*



*Euselasia candaria*



*Euselasia candaria*



*Euselasia candaria*



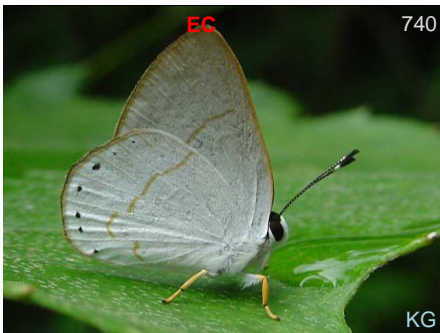
*Euselasia eupatra*



*Euselasia eusepus*



*Euselasia eusepus*



*Euselasia eusepus*



*Euselasia eusepus*



*Euselasia tarinta*



*Euselasia tarinta*



*Euselasia tarinta*

## Lycaenidae

### Blues and Hairstreaks

#### Theclinae

#### Hairstreaks



*Arawacus lincoides*

CR-EC



*Arawacus lincoides*

CR-EC



*Arawacus lincoides*

CR-EC



*Arawacus lincoides*

CR-EC



*Arawacus separata*

CO-PG



*Arawacus separata*

CO-PG



*Arcas imperialis*

MX-AR



*Aubergina paetus*

MX-CO



*Aubergina paetus*

MX-CO



*Calycopis buphonia*

CR-BR



*Calycopis caesaries*

BL-BR



*Calycopis calus*

MX-BR



*Calycopis calus* MX-BR



*Calycopis calus* MX-BR



*Calycopis calus* MX-BR



*Calycopis calus* MX-BR



*Calycopis calus* MX-BR



*Calycopis calus* MX-BR



*Calycopis calus* MX-BR



*Calycopis cerata* HN-AR



*Calycopis cerata* HN-AR



*Calycopis cerata* HN-AR



*Calycopis cerata* HN-AR



*Calycopis trebula* MX-BR





*Celmia celmus* MX-PG



*Celmia celmus* MX-PG



*Celmia celmus* MX-PG



*Celmia celmus* MX-PG



*Celmia celmus* MX-PG



*Celmia celmus* MX-PG



*Cyanophrys herodotus* MX-AR



*Cyanophrys herodotus* MX-AR



*Cyanophrys herodotus* MX-AR



*Cyanophrys herodotus* MX-AR



*Erora caespes* CO?-BO



*Eumaeus godartii* NI-EC



*Eumaeus godartii* NI-EC



*Gargina emessa* NI-BR



*Gargina emessa* NI-BR



*Gargina emessa* NI-BR



*Gargina emessa* NI-BR



*Michaelus phoenissa* IX-PE, BR



*Michaelus phoenissa* IX-PE, BR



*Michaelus phoenissa* IX-PE, BR



*Michaelus phoenissa* IX-PE, BR



*Ministrymon azia* AZ-AR



*Ministrymon azia* AZ-AR



*Ministrymon azia* AZ-AR



*Ministrymon azia* AZ-AR



*Ministrymon azia* AZ-AR



*Ministrymon azia* AZ-AR



*Ministrymon azia* AZ-AR



*Ministrymon azia* AZ-AR



*Ministrymon azia* AZ-AR



*Ministrymon phrutus* MX-BR



*Ministrymon phrutus* MX-BR



*Ministrymon phrutus* MX-BR



*Ministrymon phrutus* MX-BR



*Ministrymon phrutus* MX-BR



*Panthiades phaleros* MX-BR



*Panthiades phaleros* MX-BR



*Panthiades phaleros* MX-BR



*Pseudolycaena marsyas* NI?-AR



*Pseudolycaena marsyas* NI?-AR



*Pseudolycaena marsyas* NI?-AR



*Pseudolycaena marsyas* NI?-AR



*Pseudolycaena marsyas* NI?-AR



*Pseudolycaena marsyas* NI?-AR



*Pseudolycaena marsyas* NI?-AR



*Rekoa meton* MX-PG



*Rekoa meton* MX-PG



*Rekoa meton* MX-PG



*Rekoa palegon* TX-GU



*Rekoa palegon* TX-GU



*Rekoa palegon* TX-GU



*Rekoa palegon* TX-GU



*Rubroserrata ecbatana* CO-BR



*Rubroserrata ecbatana* CO-BR



*Rubroserrata ecbatana* CO-BR



*Strymon bazochii* MX-AR



*Strymon bazochii* MX-AR



*Strymon bazochii* MX-AR



*Strymon bazochii* MX-AR



*Strymon bazochii* MX-AR



*Strymon bazochii* MX-AR



*Strymon colombiana* CO



*Strymon gabatha* MX-PE



*Strymon gabatha* MX-PE



*Strymon gabatha* MX-PE



*Strymon gabatha* MX-PE



*Strymon megarus* MX-BR



*Strymon megarus* MX-BR



*Strymon megarus* MX-BR



*Strymon ziba* MX-AR



*Strymon ziba* MX-AR



*Strymon ziba* MX-AR



841

*Strymon ziba*

MX-AR



842

*Strymon ziba*

MX-AR



843

*Theclopsis demea*

NI-EC



844

*Theclopsis demea*

NI-EC



845

*Theritas hemon*

MX-BR



846

*Theritas hemon*

MX-BR



847

*Theritas hemon*

MX-BR



848

*Theritas hemon*

MX-BR



849

*Tmolus cydrara*

MX-BR



850

*Tmolus cydrara*

MX-BR



851

*Tmolus echion*

MX-BR



852

*Tmolus echion*

MX-BR



*Tmolus echion* MX-BR



*Tmolus echion* MX-BR



*Tmolus echion* MX-BR



*Tmolus echion* MX-BR



*Tmolus echion* MX-BR



*Tmolus echion* MX-BR



*Tmolus echion* MX-BR



*Tmolus echion* MX-BR

## Polyommatae

### Blues



*Cupido comyntas texana* TX-EC



*Cupido comyntas texana* TX-EC



*Cupido comyntas texana* TX-EC





*Cupido comyntas texana* TX-EC



*Cupido comyntas texana* TX-EC



*Cupido comyntas texana* TX-EC



*Hemiargus hanno hanno*



*Hemiargus hanno hanno*



*Hemiargus hanno hanno*



*Hemiargus hanno hanno*



*Hemiargus hanno hanno*



*Hemiargus hanno hanno*



*Hemiargus hanno hanno*



*Hemiargus hanno hanno*



*Hemiargus hanno hanno*



*Hemiargus hanno hanno*



*Hemiargus hanno hanno*



*Hemiargus hanno hanno*



*Hemiargus hanno hanno*



*Hemiargus hanno hanno*



*Hemiargus hanno hanno*



*Hemiargus hanno hanno*

## Nymphalidae

### Brushfoots

#### Heliconiinae

#### Longwings



*Dione juno juno*



*Dione juno juno*



*Dione juno juno*



*Dryadula phaetusa*



*Dryadula phaetusa*



*Dryadula phaetusa*



*Dryadula phaetusa*



*Dryas iulia iulia*



*Dryas iulia iulia*



*Dryas iulia iulia*



*Dryas iulia iulia*



*Dryas iulia iulia*



*Dryas iulia iulia*



*Eueides isabella*



*Eueides isabella*



*Eueides isabella*



*Heliconius erato hydara*



*Heliconius erato hydara*



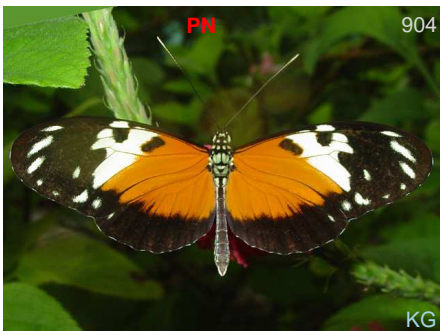
*Heliconius hecale melicerta*



*Heliconius hecale melicerta*



*Heliconius hecale melicerta*



*Heliconius hecale melicerta*



*Heliconius hecale melicerta*



*Heliconius hecale melicerta*



*Heliconius hecale melicerta*



*Heliconius hecale melicerta*



*Heliconius hecale melicerta*



*Heliconius sapho sapho*



*Heliconius sapho sapho*



*Heliconius sapho sapho*



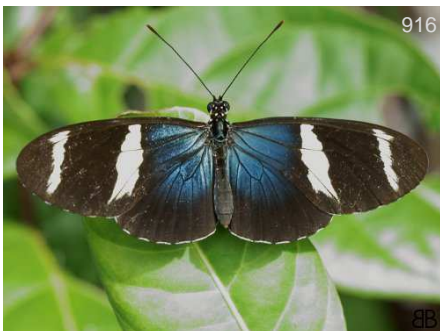
*Heliconius sapho sapho*



*Heliconius sara sara*



*Heliconius sara sara*



*Heliconius sara sara*



*Heliconius sara sara*



*Heliconius sara sara*



*Heliconius sara sara*



*Laparus doris*



*Laparus doris*



*Laparus doris*



*Laparus doris*



*Laparus doris*



*Laparus doris*



*Laparus doris*



*Laparus doris*



*Laparus doris*



*Laparus doris*

Nymphalinae  
Brushfoots



*Colobura dirce dirce*



*Colobura dirce dirce*



*Colobura dirce dirce*



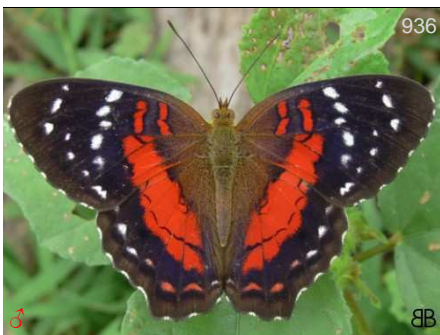
*Tigridia acesta columbina*



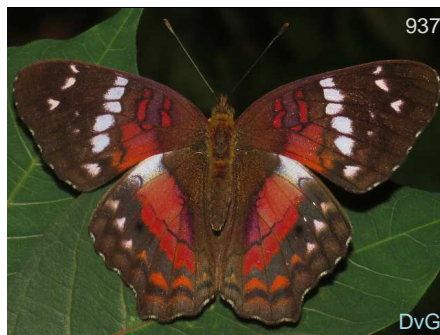
*Tigridia acesta columbina*



*Tigridia acesta columbina*



*Anartia amathea amathea*



*Anartia amathea amathea*



*Anartia amathea amathea*



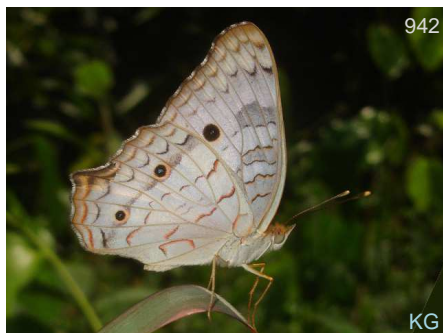
*Anartia amathea amathea*



*Anartia jatrophae jatrophae*



*Anartia jatrophae jatrophae*



*Anartia jatrophae jatrophae*



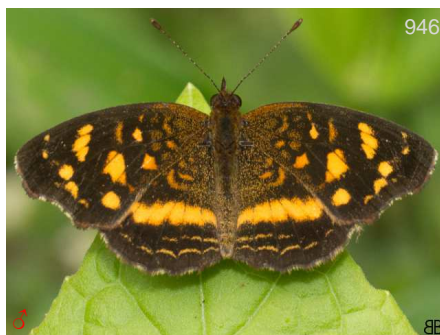
*Junonia evarete*



*Junonia evarete*



*Anthanassa drusilla drusilla*



*Anthanassa drusilla drusilla*



*Anthanassa drusilla drusilla*



*Anthanassa drusilla drusilla*



*Anthanassa drusilla drusilla*



*Anthanassa drusilla drusilla*



*Castilia ofella*



*Castilia ofella*



*Castilia ofella*





*Castilia ofella*



*Castilia ofella*



*Castilia ofella*



*Castilia ofella*



*Chlosyne narva narva*



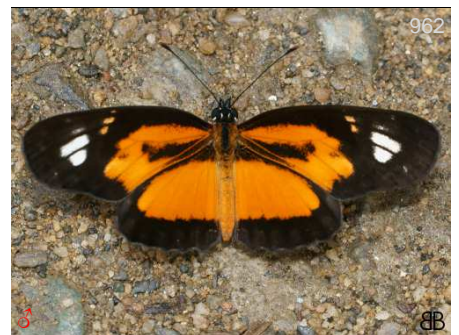
*Chlosyne narva narva*



*Chlosyne narva narva*



*Chlosyne narva narva*



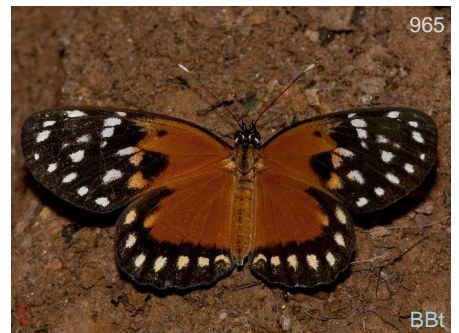
*Eresia emerantia emerantia*



*Eresia emerantia emerantia*



*Eresia emerantia emerantia*



*Eresia emerantia emerantia*



*Eresia emerantia emerantia*



*Eresia eunice drypetis*



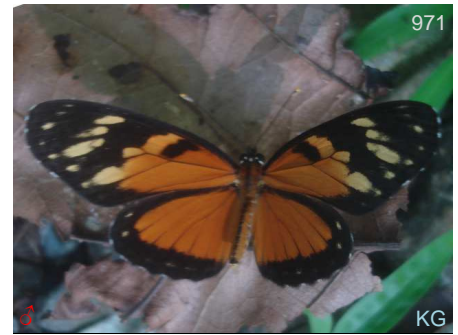
*Eresia eunice drypetis*



*Eresia ithomioides ithomioides*



*Eresia ithomioides ithomioides*



*Eresia ithomioides mimas*



*Eresia ithomioides mimas*



*Eresia ithomioides mimas*



*Janatella leucodesma*



*Janatella leucodesma*



*Janatella leucodesma*



*Janatella leucodesma*



*Janatella leucodesma*



*Tegosa anieta anieta*



*Tegosa anieta anieta*



*Tegosa anieta anieta*



*Tegosa anieta anieta*



*Tegosa anieta anieta*



*Tegosa anieta anieta*

## Limenitidinae

### Sisters

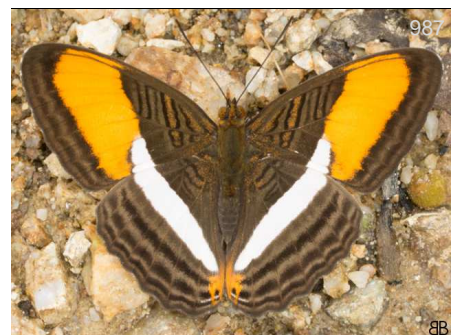
Mainly africana y asiatica some Namerica



*Adelpha cytherea daguana*



*Adelpha cytherea daguana*



*Adelpha cytherea daguana*



*Adelpha cytherea daguana*



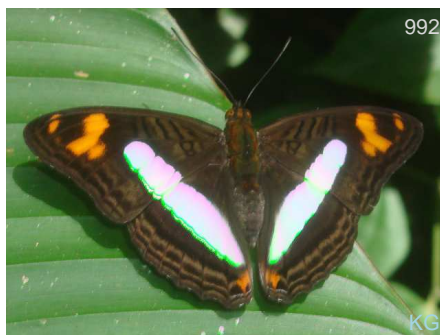
*Adelpha iphicles iphicles*



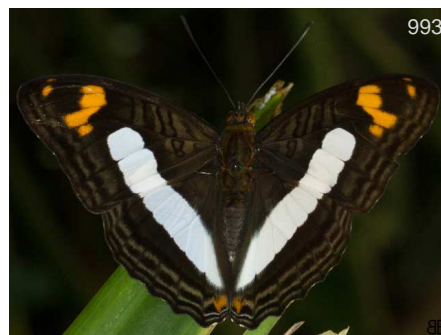
*Adelpha iphicles iphicles*



*Adelpha iphicles iphicles*



*Adelpha malea fundania*



*Adelpha malea fundania*



*Adelpha malea fundania*



*Adelpha saundersii frontina*



*Adelpha saundersii frontina*



*Adelpha saundersii frontina*

## Charaxinae

### Leafwings

Larger butterflies, strong fliers, they usually sit with wings closed, then flash their wings open showing brilliant blue, purple or orange above. They look like dried leaves when wings are closed. They do not come to flowers, but like excrement, urine an



*Agrias amydon* MX-BR



*Agrias amydon* MX-BR



*Consul fabius* MX-BR



*Consul fabius* MX-BR



*Consul fabius* MX-BR



*Consul fabius* MX-BR



*Consul fabius* MX-BR



*Fountainea ryphea ryphea* MX-AMZ



*Fountainea ryphea ryphea* MX-AMZ



*Fountainea ryphea ryphea* MX-AMZ



*Fountainea ryphea ryphea* MX-AMZ



*Fountainea ryphea ryphea* MX-AMZ



*Fountainea ryphea ryphea* MX-AMZ



*Fountainea ryphea ryphea* MX-AMZ



*Memphis anassa* CO-BR



*Memphis cleomestra cleomestra* CO



*Memphis cleomestra cleomestra* CO



*Memphis cleomestra cleomestra* CO



*Memphis cleomestra cleomestra* CO



*Memphis xenocles fisilis* CO



*Memphis xenocles fisilis* CO



*Memphis xenocles fisilis* CO



*Memphis xenocles fisilis* CO



*Memphis xenocles fisilis* CO



1022

BB

*Memphis xenocles fisilis*

CO



1023

BB

*Memphis xenocles fisilis*

CO



1024

BB

*Zaretis ellops*

MX-VZ



1025

BB

*Zaretis ellops*

MX-VZ



1026

BB

*Zaretis ellops*

MX-VZ



1027

MM

*Zaretis ellops*

MX-VZ



1028

BB

*Zaretis ellops*

MX-VZ



1029

FMI

*Zaretis isidora*

MX-ARG



1030

KG

*Zaretis isidora*

MX-ARG



1031

FMI

*Zaretis isidora*

MX-ARG



1032

BB

*Zaretis isidora*

MX-ARG



1033

BB

*Archaeoprepona camilla*



1034

DvG

*Archaeoprepona camilla*



1035

FM

*Archaeoprepona demophon demophon*



1036

*Archaeoprepona demophon demophon*



1037

BB

*Archaeoprepona demophon demophon*



1038

*Archaeoprepona demophon demophon*



1039

*Archaeoprepona demophon demophon*



1040

BB

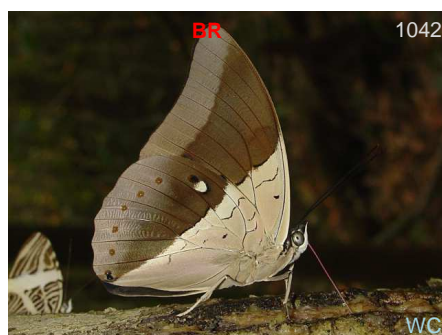
*Archaeoprepona demophon demophon*



1041

BB

*Archaeoprepona demophon demophon*



1042

BR

WC

*Archaeoprepona meander*

## Apaturinae

### Emperors

Only a few widespread species, usually bright blue triangle above, silver or brownish below. They like wet dirt and are strong fliers.



1043

BB

*Doxocopa clothilda*



1044

BB

*Doxocopa clothilda*



1045

BB

*Doxocopa clothilda*





*Doxocopa clothilda*



*Doxocopa clothilda*



*Doxocopa clothilda*



*Doxocopa clothilda*



*Doxocopa cyane mexicana*



*Doxocopa cyane mexicana*



*Doxocopa cyane mexicana*



*Doxocopa cyane mexicana*



*Doxocopa cyane mexicana*



*Doxocopa pavon theodora*



*Doxocopa pavon theodora*



*Doxocopa pavon theodora*



*Doxocopa pavon theodora*



*Doxocopa pavon theodora*



*Doxocopa pavon theodora*



*Doxocopa pavon theodora*



*Doxocopa pavon theodora*



*Doxocopa pavon theodora*



*Doxocopa zunilda felderi*



*Doxocopa zunilda felderi*



*Doxocopa zunilda felderi*



*Doxocopa zunilda felderi*

## Satyrinae

Satyrans, Morphos, and Owls



*Antirrhea philaretes philaretes*



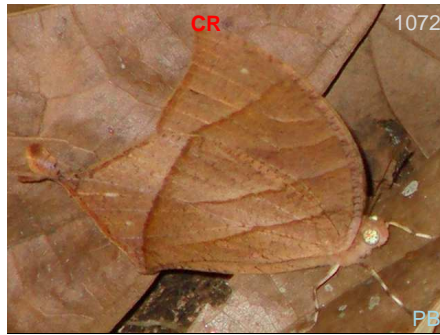
*Antirrhea philaretes philaretes*



*Antirrhea philaretes philaretes*



*Antirrhea philaretes philaretes*



*Caerois gerdrutus*



*Caerois gerdrutus*



*Caerois gerdrutus*



*Morpho amathonte*



*Morpho cypris cypris*



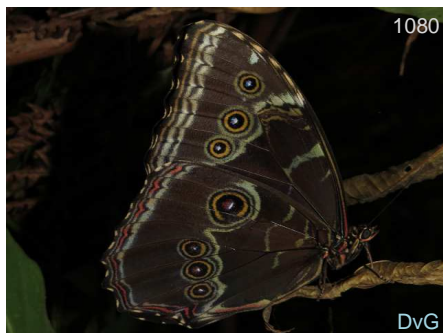
*Morpho cypris cypris*



*Morpho helenor peleides*



*Morpho helenor peleides*

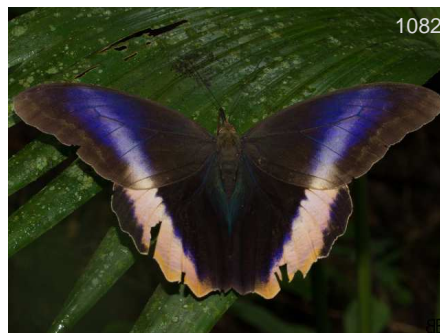


*Morpho helenor peleides*



*Caligo atreus agesilaus*

CO-EC



*Caligo atreus agesilaus*

CO-EC



*Caligo atreus agesilaus*

CO-EC



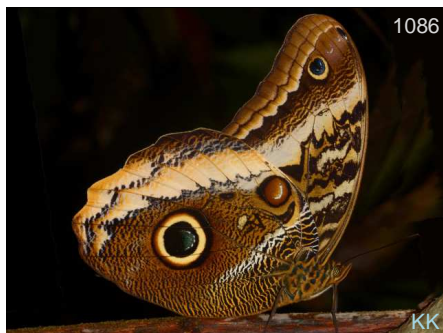
*Caligo atreus agesilaus*

CO-EC



*Caligo atreus agesilaus*

CO-EC



*Caligo atreus agesilaus*

CO-EC



*Caligo eurilochus eurilochus*

SoAm



*Caligo eurilochus eurilochus*

SoAm



*Caligo eurilochus eurilochus*

SoAm



*Caligo oedipus oedipus*

PN-CO



*Caligo oedipus oedipus*

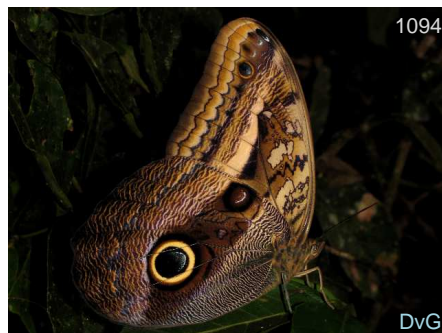
PN-CO



*Caligo oedipus oedipus* PN-CO



*Caligo oileus scamander* GT-CO



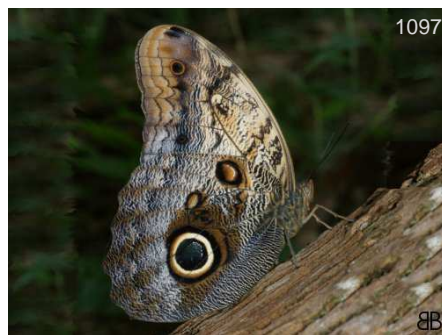
*Caligo oileus scamander* GT-CO



*Caligo telamonius menus* CR-CO



*Caligo telamonius menus* CR-CO



*Caligo telamonius menus* CR-CO



*Catoblepia xanthicles xanthicles* -PN,CO?



*Catoblepia xanthicles xanthicles* !-PN,CO?



*Catoblepia xanthicles xanthicles* !-PN,CO?



*Catoblepia xanthicles xanthicles* -PN,CO?



*Catoblepia xanthicles xanthicles* !-PN,CO?



*Opsiphanes bogotanus bogotanus* CO



*Opsiphanes bogotanus bogotanus* CO



*Opsiphanes bogotanus bogotanus* CO



*Opsiphanes bogotanus bogotanus* CO



*Opsiphanes bogotanus bogotanus* CO



*Opsiphanes bogotanus bogotanus* CO



*Opsiphanes bogotanus bogotanus* CO



*Opsiphanes quiteria* MX-BR



*Opsiphanes quiteria* MX-BR



*Opsiphanes quiteria* MX-BR



*Opsiphanes quiteria* MX-BR



*Opsiphanes quiteria* MX-BR



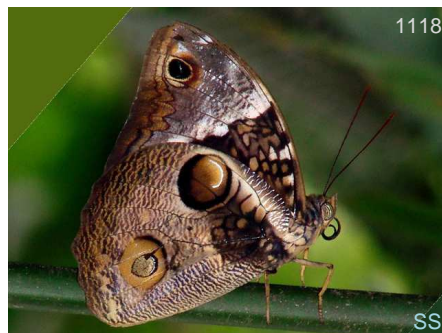
*Opsiphanes quiteria* MX-BR



*Opsiphanes tamarindi tamarindi* MX-CO



*Opsiphanes tamarindi tamarindi* MX-CO



*Opsiphanes tamarindi tamarindi* MX-CO



*Opsiphanes tamarindi tamarindi* MX-CO



*Opsiphanes tamarindi tamarindi* MX-CO



*Opsiphanes tamarindi tamarindi* MX-CO



*Cithaerias pireta pireta*



*Cithaerias pireta pireta*



*Cithaerias pireta pireta*



*Cithaerias pireta pireta*



*Cithaerias pireta pireta*



*Haetera macleannania*



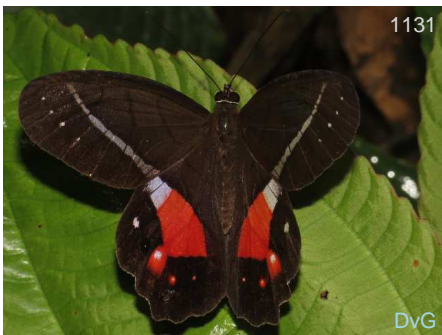
*Haetera macleannania*



*Haetera macleannania*



*Pierella helvina*



*Pierella helvina*



*Pierella helvina*



*Pierella helvina*



*Pierella luna luna*



*Pierella luna luna*



*Pierella luna luna*



*Pierella luna luna*



*Pierella luna luna*



*Pierella luna luna*





*Chloreuptychia arnaca*



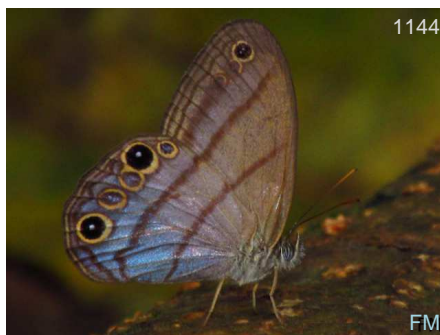
*Chloreuptychia arnaca*



*Chloreuptychia arnaca*



*Chloreuptychia arnaca*



*Chloreuptychia arnaca*



*Chloreuptychia callichloris*



*Cissia confusa*



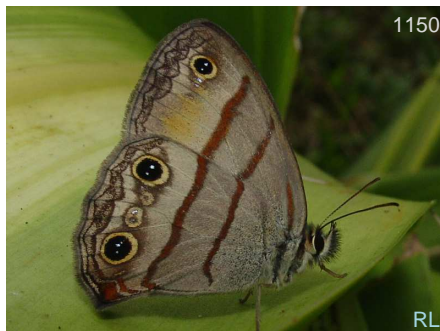
*Cissia confusa*



*Cissia confusa*



*Cissia confusa*



*Cissia labe*



*Cissia labe*



*Cissia labe*



*Cissia labe*



*Cissia labe*



*Cissia pompilia*



*Cissia pompilia*



*Cissia pompilia*



*Cissia pompilia*



*Cissia pompilia*



*Cissia pompilia*



*Euptychia hannemanni*



*Euptychia mollina*



*Euptychia mollina*



*Euptychia mollina*



*Euptychia westwoodi*



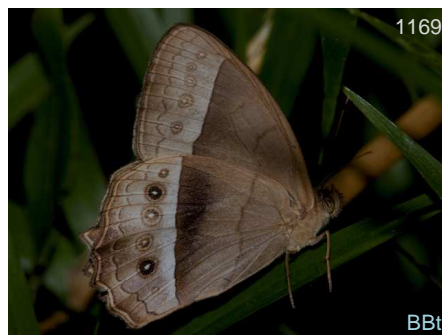
*Euptychia westwoodi*



*Euptychia westwoodi*



*Euptychia westwoodi*



*Harjesia blanda*



*Hermeuptychia hermes*



*Hermeuptychia hermes*



*Hermeuptychia hermes*



*Hermeuptychia hermes*



*Hermeuptychia hermes*



*Hermeuptychia hermes*



*Hermeuptychia hermes*



*Hermeuptychia hermes*



*Hermeuptychia hermes*



*Hermeuptychia hermes*



*Magneuptychia libye*



*Magneuptychia libye*



*Megeuptychia antonoe*



*Megeuptychia antonoe*



*Pareuptychia ocirrhoe*



*Pareuptychia ocirrhoe*



*Pareuptychia ocirrhoe*



*Pareuptychia ocirrhoe*



*Pareuptychia ocirrhoe*



*Pareuptychia ocirrhoe*



*Pareuptychia ocirrhoe*



*Posttaygetis penelea*



*Posttaygetis penelea*



*Pseudodebis celia*



*Pseudodebis marpessa*



*Pseudodebis puritana*



*Pseudodebis puritana*



*Pseudodebis puritana*



*Pseudodebis puritana*



*Pseudodebis puritana*



*Taygetis kerea*



*Taygetis kerea*



*Taygetis kerea*



*Taygetis kerea*



*Taygetis kerea*



*Taygetis leuctra*



*Taygetis leuctra*



*Taygetis leuctra*



*Taygetis virgilia*



*Taygetis virgilia*



*Taygetis virgilia*

## Danainae

### Monarchs & Clearwings

Tribe Danaini/Monarchs – orange/rust colored butterflies, fairly good sized, famous North American migrants.

Tribe Ithomiini/Clearwings & Tigerwings – crystal or transparent winged, or orange and black striped. They usually fly in shaded areas, very slow!



*Lycorea halia atergatis* No SoAm



*Lycorea halia atergatis* No SoAm



*Lycorea halia atergatis* No SoAm



*Lycorea halia atergatis* No SoAm



*Lycorea halia atergatis* No SoAm



*Lycorea halia atergatis* No SoAm



*Aeria eurimedia eurimedia*



*Aeria eurimedia eurimedia*



*Aeria eurimedia eurimedia*



*Godyris zavaleta zavaleta*



*Godyris zavaleta zavaleta*



*Hypoleria lavinia vanilia*



*Hypoleria lavinia vanilia*



*Ithomia celemia celemia*



*Ithomia celemia celemia*



*Ithomia diasia galata*



*Ithomia diasia galata*



*Ithomia diasia galata*



*Ithomia diasia galata*



*Ithomia iphianassa panamensis*



*Ithomia iphianassa panamensis*



*Ithomia iphianassa panamensis*

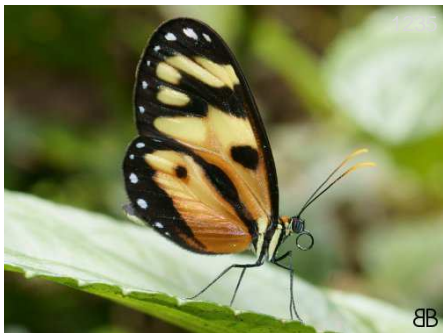


*Ithomia iphianassa panamensis*



*Ithomia iphianassa panamensis*





*Ithomia iphianassa panamensis*



*Ithomia jucunda jucunda*



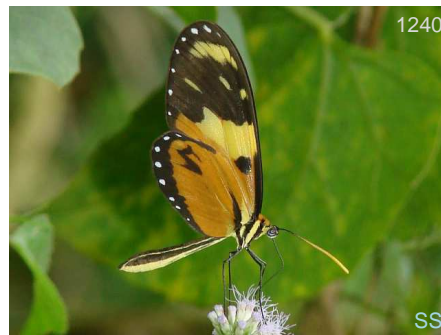
*Ithomia jucunda jucunda*



*Mechanitis lysimnia macrinus*



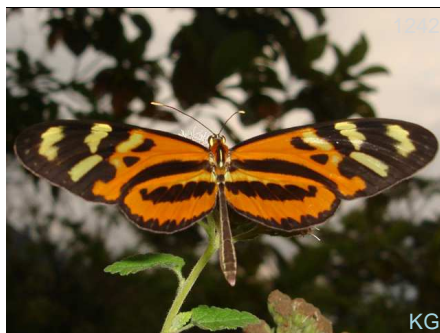
*Mechanitis lysimnia macrinus*



*Mechanitis lysimnia macrinus*



*Mechanitis polymnia veritabilis*



*Mechanitis polymnia veritabilis*



*Mechanitis polymnia veritabilis*



*Mechanitis polymnia veritabilis*



*Melinaea idae idae*



*Melinaea idae idae*



*Napeogenes stella stella*



*Napeogenes stella stella*



*Napeogenes stella stella*



*Napeogenes stella stella*



*Napeogenes stella stella*



*Oleria amalda amalda*



*Oleria amalda amalda*



*Oleria amalda amalda*



*Oleria amalda amalda*



*Thyridia psidii melantho*



*Thyridia psidii melantho*



*Tithorea harmonia harmonia*



1259

*Tithorea harmonia harmonia*



1260

*Tithorea harmonia harmonia*



1261

*Tithorea harmonia harmonia*



1262

*Tithorea harmonia harmonia*



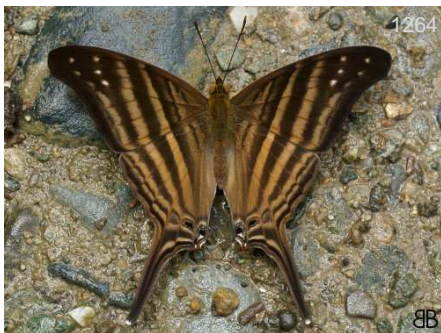
1263

*Tithorea harmonia harmonia*

## Cyrestinae

### Daggerwings

Larger butterflies with long, pointed tails, like daggers in English. Often sit on wet dirt with wings open. Many are all brown or all orange with thin vertical stripes.



1264

*Marpesia chiron*



1265

*Marpesia chiron*



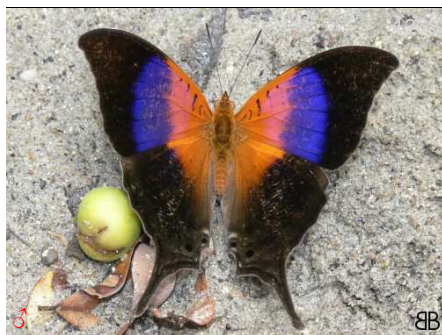
1266

*Marpesia chiron*



1267

*Marpesia chiron*



1268

*Marpesia furcula*



1269

*Marpesia furcula*



*Marpesia furcula*



*Marpesia furcula*



*Marpesia furcula*



*Marpesia furcula*

## Biblidinae

### Tropical Brushfoots

Medium sized butterflies, varied colors, many are widespread. Includes 88's.



*Biblis hyperia hyperia*

US-BR



*Biblis hyperia hyperia*

US-BR



*Biblis hyperia hyperia*

US-BR



*Catonephele numilia esite*

MX-W EC



*Catonephele numilia esite*

MX-W EC



*Catonephele numilia esite*

MX-W EC



*Catonephele numilia esite* MX-W EC



*Catonephele numilia esite* MX-W EC



*Catonephele numilia esite* MX-W EC



*Catonephele nyctimus* VZ-EC



*Catonephele nyctimus* VZ-EC



*Catonephele nyctimus* VZ-EC



*Catonephele nyctimus* VZ-EC



*Catonephele nyctimus* VZ-EC



*Catonephele nyctimus* VZ-EC



*Catonephele nyctimus* VZ-EC



*Catonephele nyctimus* VZ-EC



*Catonephele orites* JR-W EC



*Catonephele orites*

DR-W EC



*Eunica norica norica*

W EC,VZ



*Eunica norica norica*

W EC,VZ



*Eunica norica norica*

W EC,VZ



*Eunica norica norica*

W EC,VZ



*Eunica norica norica*

W EC,VZ



*Eunica norica norica*

W EC,VZ



*Eunica norica norica*

W EC,VZ



*Eunica norica norica*

W EC,VZ



*Eunica orphise*

CO-BR



*Eunica orphise*

CO-BR



*Eunica orphise*

CO-BR



*Eunica pomona* MX-CO



*Eunica pomona* MX-CO



*Eunica volumna venusia* MX-CO



*Eunica volumna venusia* MX-CO



*Nessaea aglaura aglaura* MX-W EC



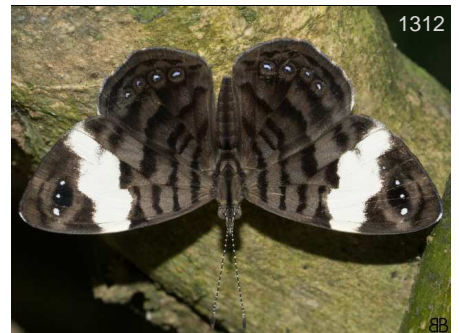
*Nessaea aglaura aglaura* MX-W EC



*Ectima erycinoides erycinoides* CO



*Ectima thecla thecla* SoAm



*Ectima thecla thecla* SoAm



*Hamadryas amphinome fumosa* CO



*Hamadryas amphinome fumosa* CO



*Hamadryas amphinome fumosa* CO



1316  
*Hamadryas arinome arienis* CR-BO DW BB



1317  
*Hamadryas arinome arienis* CR-BO DW BB



1318  
*Hamadryas februa ferentina* TX-AMZ BB



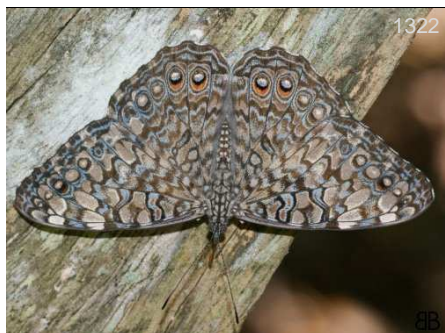
1319  
*Hamadryas februa ferentina* TX-AMZ BB



1320  
*Hamadryas februa ferentina* TX-AMZ BB



1321  
*Hamadryas februa ferentina* TX-AMZ BB



1322  
*Hamadryas februa ferentina* TX-AMZ BB



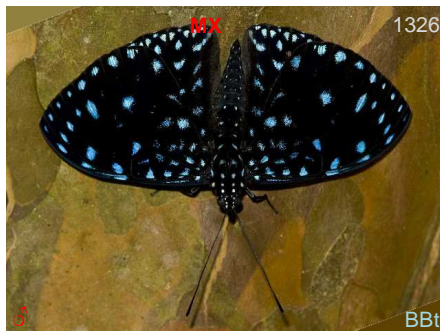
1323  
*Hamadryas februa ferentina* TX-AMZ BB



1324  
*Hamadryas iphthime iphthime* CR-BR PE KG



♂  
*Hamadryas laodamia laodamia* BB



1326  
*Hamadryas laodamia laodamia* BBt



1327  
*Hamadryas laodamia laodamia* FM





*Hamadryas laodamia laodamia*



*Hamadryas laodamia laodamia*



*Hamadryas laodamia laodamia*



*Panacea prola prola* CO-VZ



*Panacea prola prola* CO-VZ



*Panacea prola prola* CO-VZ



*Panacea prola prola* CO-VZ



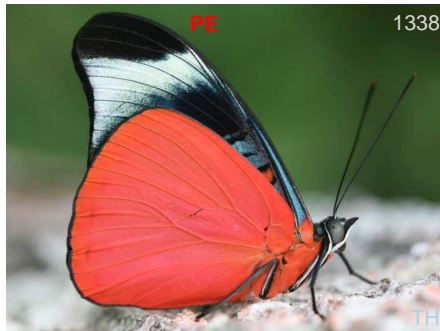
*Panacea prola prola* CO-VZ



*Panacea prola prola* CO-VZ



*Panacea prola prola* CO-VZ



*Panacea prola prola* CO-VZ



*Nica flavilla flavilla* CO?-BR



1340

BB

*Nica flavilla flavilla*

CO?-BR



1341

KK

*Pyrrhogyra crameri undine*

CO



1342

BB

*Pyrrhogyra crameri undine*

CO



1343

BB

*Pyrrhogyra crameri undine*

CO



1344

BB

*Pyrrhogyra crameri undine*

CO



1345

BB

*Temenis laothoe columbiana*

CO



1346

BB

*Temenis laothoe columbiana*

CO



1347

FM

*Temenis laothoe columbiana*

CO



1348

BB

*Temenis laothoe columbiana*

CO



1349

BB

*Temenis laothoe columbiana*

CO

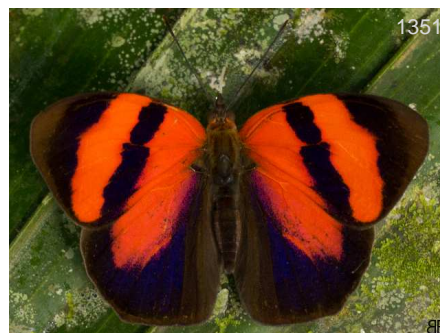


1350

NC

*Temenis pulchra pulchra*

CO

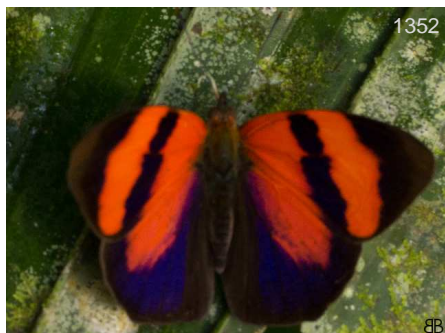


1351

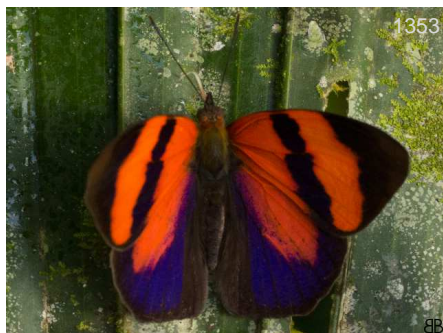
BB

*Temenis pulchra pulchra*

CO



*Temenis pulchra pulchra* CO



*Temenis pulchra pulchra* CO



*Temenis pulchra pulchra* CO



*Temenis pulchra pulchra* CO



*Temenis pulchra pulchra* CO



*Temenis pulchra pulchra* CO



*Dynamine arene* CO-FG



*Dynamine chryseis* MZ basin



*Dynamine chryseis* MZ basin



*Dynamine chryseis* MZ basin



*Dynamine chryseis* MZ basin



*Dynamine chryseis* MZ basin



1364

*Dynamine chryseis*

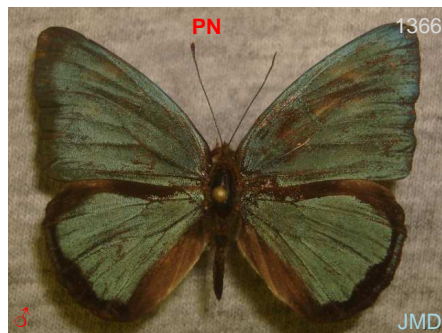
MZ basin



1365

*Dynamine chryseis*

MZ basin



1366

*Dynamine paulina thalassina*

GT-CO



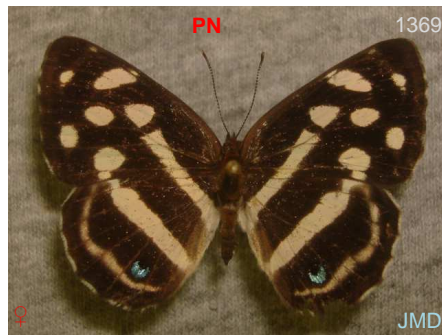
*Dynamine paulina thalassina*

GT-CO



*Dynamine paulina thalassina*

GT-CO



1369

*Dynamine paulina thalassina*

GT-CO



1370

*Dynamine postverta mexicana*

MX-CO



1371

*Dynamine postverta mexicana*

MX-CO



1372

*Dynamine postverta mexicana*

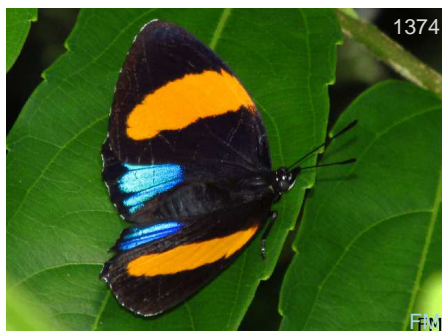
MX-CO



1373

*Callicore lyca*

MX-BR



1374

*Callicore lyca*

MX-BR



1375

*Callicore lyca*

MX-BR



*Callicore lyca* MX-BR



*Callicore lyca* MX-BR



*Callicore lyca* MX-BR



*Callicore pitheas* CHIA-EC



*Callicore pitheas* CHIA-EC



*Callicore pitheas* CHIA-EC



*Callicore pitheas* CHIA-EC



*Callicore pitheas* CHIA-EC



*Callicore tolima denina* CO



*Callicore tolima denina* CO



*Callicore tolima denina* CO



*Callicore tolima denina* CO



*Callicore tolima denina*



*Diaethria clymena clymena*



*Diaethria sp x rioclaro*

This list is the result of the accumulative efforts from a large number of people. The following are the photographers who have contributed their photos to this work, thank you very much.

## Fotógrafos - Photographers

|     |                         |     |                          |     |                                |
|-----|-------------------------|-----|--------------------------|-----|--------------------------------|
| AH  | Adrian Hoskins          | AN  | Andrew Neild             | BB  | Juan Guillermo Jaramillo Velaz |
| BBn | Bill Bouton             | BBt | Bill Berthet             | DvG | David Geale                    |
| DW  | Dan Wade                | EM  | Eileen Mahler            | FH  | Fred Heath                     |
| FM  | Fredy Montero           | GC  | Gill Carter              | GM  | Glenn Mahler                   |
| HR  | Herschel Raney          | JAB | Johnnier Arango Bermudez | JJ  | Jorge J Restrepo               |
| JK  | John Kemner             | JMD | John MacDonald           | Jpe | Jorge Perez                    |
| JSn | Jim Snyder              | KG  | Kim Garwood              | KK  | Ken Kertell                    |
| KP  | Kevin Painter           | KtR | Kurt Radamaker           | KW  | Kay Wade                       |
| KWs | Kristine Wallstrom      | LEM | Luis Eduardo Mejia       | Leo | Leopoldina Tapasco             |
| MM  | Martin Moreno           | PB  | Priscilla Brodtkin       | RG  | Rodrigo Gaviria Obregon        |
| RL  | Richard Lehman          | RR  | Roger Rittmaster         | RRt | Roger Rittmaster               |
| SS  | Shirley Sekarajasingham | TG  | Thierry Garcia           | TH  | Tony Hoare                     |
| THn | Tom Horton              | WC  | Will Carter              |     |                                |

## Agradecimientos - Acknowledgements

Este catálogo es el resultado del esfuerzo acumulativo de un gran número de colaboradores y fotógrafos a quienes damos las gracias.

Agradecemos a los siguientes expertos que generosamente han ayudado en la identificación de algunas de nuestras fotos: Stephane Attal, Andrew Brower, Bernard Hermier, James Mallet, Andrew Neild, Gregory Nielsen, Tomasz Pycrz, Julian Salazar, Aaron Soh and Keith Willmott. Todos los errores en identificación son responsabilidad de Kim Garwood o Juan Guillermo Jaramillo V.

This catalog is the result of cumulative effort of many collaborators and photographers whom we thank.

We thank the following experts who generously helped in identifying some of our photos: Stephane Attal, Andrew Brower, Bernard Hermier, James Mallet, Andrew Neild, Gregory Nielsen, Tomasz Pycrz, Julian Salazar, Aaron Soh and Keith Willmott. All errors in identifications are the responsibility of Kim Garwood and Juan Guillermo Jaramillo.

Numero de especies en la base de datos 3.755 y con subespecies 4.895, numero de fotos 7.493, especies y subespecies con foto 2.607, con la colaboracion de 98 fotografos.

Number of species in database 3.755 and with subspecies 4.895, number of photos 7.493, species and subspecies with photo 2.607, with the colaboracion of 98 photographers.

## Bibliografía - Bibliography

- AMARILLO-S. A., M.G. ANDRADE-C. 1996. *Clave sinóptica para las familias y subfamilias de mariposas y polillas colombianas*. 117 – 147. En Andrade-C. M.G., G. Amat, F. Fernandez (Eds.) *Insectos de Colombia, estudios escogidos*. Academia Colombiana de Ciencias Exactas, Físicas y Naturales Colección Jorge Alvarez Lleras No. 10 Coeditado con el Centro Editorial Javeriano. 541pp.
- BRIDGES, Ch. A. 1988. *Catalogue of Papilionidae & Pieridae (Lepidoptera: Rhopalocera)*. Published by Charles A. Bridges, Urbana, Illinois USA. 323 pp.
- D'ABRERA, B., 1981-1995.- *Butterflies of the Neotropical Region*. 7 vols: 1260 pp. + pls. Hill House, Melbourne-Victoria.
- D'ABRERA, B. (1981) *Butterflies of the Neotropical Region. Part I: Papilionidae & Pieridae*. Lansdowne Editions.
- D'ABRERA, B. (1988) *Butterflies of the Neotropical Region. Part V. Nymphalidae (Cont.) & Satyridae*. Hill House Publishers Victoria, Australia.
- DEVRIES, Ph. 1997. *The Butterflies of Costa Rica and their Natural History Vol II: Riodinidae*. Princeton University Press, 288 pp.
- DEVRIES, Ph. 1987. *The Butterflies of Costa Rica and their Natural History Papilionidae, Pieridae, Nymphalidae*. Princeton University Press, 327 pp.
- LECROM, J.F., CONSTANTINO, L.M. & J.A. SALAZAR. 2002. *Mariposas de Colombia. Tomo 1: Familia Papilionidae*. Carlec, Ltda, Bogotá. 108 pp, 89 pl. Edición española
- LECROM, J.F., LLORENTE, J., CONSTANTINO, L.M. & J.A. SALAZAR. 2004. *Mariposas de Colombia. Tomo 2. Familia Pieridae*. Carlec, Ltda, Bogotá. 180 pp
- NEILD A.F., 2010.- *The Butterflies of Venezuela Part 2: Nymphalidae 2: (Acraeinae, Libytheinae, Ithomiinae, Morphinae): 275 pp*. Meridian Publications. Greenwich, London
- NEILD, A. F. E. 1996. *The Butterflies of Venezuela Part 1: Nymphalidae I (Limenitidinae, Apaturinae, Charaxinae)*. Meridian Publications Greenwich, London, UK, 144 pp.
- NEILD A.F., 1996.- *The Butterflies of Venezuela Part 1: Nymphalidae I (Limenitidinae, Apaturinae, Charaxinae): 144 pp*. Meridian Publications. Greenwich, London
- RODRÍGUEZ, G., SALAZAR, J.A. & CONSTANTINO, L.M. 2010. *Estudio sobre las especies colombianas de Anteros Hubner (1819) (Lepidoptera: Riodinidae)* Boletín Científico. Mus. Hist. Nat. Universidad de Caldas
- SALAZAR, J.A., RODRÍGUEZ, G., & L.M. CONSTANTINO, L.M.. 2009. *Contribución al conocimiento del genero Mesosemia Hubner, 1819 en Colombia y descripción de nuevos taxa (Lepidoptera: Riodinidae)* Boletín Científico. Mus. Hist. Nat. Universidad de. Caldas (Manizales, Colombia). 13 (2): 174-240.
- SALAZAR-E., J.A., RODRÍGUEZ, G., CONSTANTINO, L.M. & RÍOS MÁLAVER, C., 2014.- *Contribución al conocimiento de las especies del género Siseme Westwood, 1851 en Colombia (Lepidoptera: Riodinidae)*. Bol. Cient. Mus. Hist. Nat. U. de Caldas, 18 (2): 265-285.
- TYLER, H., K. S. BROWN JR. & K. WILSON 1994. *Swallowtail Butterflies of the Americas*. Scientific Publishers, Inc. Gainesville Fl. USA. 375 pp.
- VÉLEZ, J.H. & SALAZAR, J.A., 1991.- *Mariposas de Colombia*: 167p. Villegas Editores, Bogotá.

## Para citar utilice - To quote use:

GARWOOD K., JARAMILLO J.G. Catálogo de las mariposas de Cañón río Claro - Reserva el Refugio, San Luis, Antioquia, Colombia y la fecha de impresión domingo, 13 de marzo de 2016

GARWOOD K., JARAMILLO J.G. Catalog of the butterflies of Cañón río Claro - Reserva el Refugio, San Luis, Antioquia, Colombia and the print date domingo, 13 de marzo de 2016





Colombia  
*es Vida*

Este listado no es un índice, la numeración consecutiva sirve para contar las especies de la localidad, además el listado puede contener un número mayor de especies que el catálogo pues hay especies observadas, colectadas o reportadas en la literatura que no tienen aún fotos en la base de datos.

This list is not an index, the consecutive numbering is used to count the species of the locality, in addition the list may contain a greater number of species than the catalog as there are species observed, collected or reported in the literature that do not yet have photos in the database.

### Mariposas de Cañón río Claro - Reserva el Refugio

## Hesperiidae

### Eudaminae

- 1 *Aguna albistria leucogramma*
- 2 *Astraptus apastus apastus*
- 3 *Astraptus enotrus*
- 4 *Astraptus fulgerator*
- 5 *Autochton longipennis*
- 6 *Autochton neis*
- 7 *Chrysoplectrum epicinnea*
- 8 *Epargyreus clavicornis tenda*
- 9 *Narcosius sp rioclaro*
- 10 *Nascus phocus*
- 11 *Phanus grandis*
- 12 *Phanus vitreus*
- 13 *Phocides pigmalion pigmalion*
- 14 *Polygonus savigny savigny*
- 15 *Polythrix ceculus*
- 16 *Salatis sp rioclaro*
- 17 *Telemiades avitus*
- 18 *Telemiades epicalus*
- 19 *Telemiades squanda*
- 20 *Typhedanus undulatus*
- 21 *Udranomia kikkawai*
- 22 *Urbanus dorantes dorantes*
- 23 *Urbanus doryssus doryssus*
- 24 *Urbanus simplicius*
- 25 *Urbanus teleus*

### Hesperiinae

- 26 *Aides dysoni*
- 27 *Anthoptus epictetus*
- 28 *Aroma aroma*
- 29 *Callimormus radiola radiola*

- 30 *Calpodus ethlius*
- 31 *Carystoides basoches*
- 32 *Carystoides sicania orbis*
- 33 *Carystoides sp rioClaro*
- 34 *Carystus phorcus phorcus*
- 35 *Carystus superbiens*
- 36 *Cobalus fiducula*
- 37 *Enosis sp rioclaro*
- 38 *Justinia justinianus*
- 39 *Molo mango*
- 40 *Naevolus orius orius*
- 41 *Neoxeniades braesia aqua*
- 42 *Niconiades nikko*
- 43 *Nyctelius nyctelius nyctelius*
- 44 *Orphe vatinius*
- 45 *Panoquina evadnes*
- 46 *Phanes aletes*
- 47 *Phemiades pohli cidra*
- 48 *Remella remus*
- 49 *Saliana esperi esperi*
- 50 *Saliana hewitsoni*
- 51 *Saliana longirostris*
- 52 *Saliana severus*
- 53 *Saliana triangularis*
- 54 *Talides alternata*
- 55 *Talides sp rio claro*
- 56 *Thracides nida*
- 57 *Thracides phidon*
- 58 *Tromba xanthura*
- 59 *Vehilius sp x pnivel 4*
- 60 *Vehilius stictomenes stictomenes*

### Pyrginae

- 61 *Achlyodes busirus*

- 62 *Achlyodes pallida*
- 63 *Aethilla echina echina*
- 64 *Anastrus luctuosus*
- 65 *Anastrus neaeris neaeris*
- 66 *Anisochoria pedaliodina polysticta*
- 67 *Aspitha leander*
- 68 *Camptopleura auxo*
- 69 *Camptopleura impressus*
- 70 *Carrhenes lilloi*
- 71 *Celaenorrhinus eligius eligius*
- 72 *Celaenorrhinus monartus*
- 73 *Cycloglypha enega*
- 74 *Cycloglypha thrasibulus thrasibulus*
- 75 *Cyclosemia anastomosis*
- 76 *Eantis thraso*
- 77 *Ebrietas anacreon anacreon*
- 78 *Ebrietas osyris*
- 79 *Gorgopas chlorocephala chlorocephala*
- 80 *Gorgythion begga begga*
- 81 *Helias cama*
- 82 *Helias godmani*
- 83 *Helioptetes alana*
- 84 *Milanion hemes hemes*
- 85 *Mylon maimon*
- 86 *Myrinia laddeyi*
- 87 *Myscelus amystis amystis*
- 88 *Nisoniades brunneata*
- 89 *Ouleus fridericus*
- 90 *Pachyneuria duidae*
- 91 *Passova ganymedes ganymedes*
- 92 *Pellicia arina*
- 93 *Pyrgus orcus*
- 94 *Pyrrhopyge phidias phidias*

- 95 *Pythonides grandis assecla*
- 96 *Pythonides proxenus*
- 97 *Quadrus cerialis*
- 98 *Sostrata pusilla pusilla*
- 99 *Staphylus chlorocephala*
- 100 *Staphylus sp rioClaro x*
- 101 *Viola egra*
- 102 *Xenophanes tryxus*
- 103 *Zera tetrastigma tetrastigma*
- 104 *Zonia zonia panamensis*

## Papilionidae

### Papilioninae

- 105 *Heraclides anchisiades anchisiades*
- 106 *Heraclides paeon thrason*
- 107 *Heraclides thoas nealces*
- 108 *Mimoides ilus ilus*
- 109 *Mimoides pausania cleombrotus*
- 110 *Parides erithalion erithalion*
- 111 *Parides eurimedes*
- 112 *Parides eurimedes arriphus*
- 113 *Parides iphidamas phalias*
- 114 *Parides sesostris tarquinios*
- 115 *Pterourus zagreus*

## Pieridae

### Coliadinae

- 116 *Aphrissa statira statira*
- 117 *Eurema albula albula*
- 118 *Phoebis argante argante*
- 119 *Phoebis philea philea*
- 120 *Phoebis sennae marcellina*
- 121 *Rhabdodryas trite trite*

### Dismorphiinae

- 122 *Moschoneura pinthous*

### Pierinae

- 123 *Cunizza hirlanda serda*
- 124 *Glutophrissa drusilla drusilla*

## Riodinidae

### Euselasiinae

- 125 *Euselasia aurantiaca [n. ssp.]*
- 126 *Euselasia candaria*
- 127 *Euselasia eupatra*
- 128 *Euselasia eusepus*
- 129 *Euselasia tarinta*

## Riodininae

- 130 *Ancyluris inca huascar*
- 131 *Ancyluris jurgensenii atahualpa*
- 132 *Ancyluris marcia*
- 133 *Anteros allectus allectus*
- 134 *Anteros formosus formosus*
- 135 *Anteros kupris kupris*
- 136 *Calephelis inca*
- 137 *Calephelis iris*
- 138 *Caria castalia*
- 139 *Caria mantinea lampeto*
- 140 *Caria rhacotis*
- 141 *Cariomothis poeciloptera*
- 142 *Chalodeta chaonitis*
- 143 *Chalodeta lypera*
- 144 *Charis anius*
- 145 *Chorinea bogota*
- 146 *Crocozona pheretima*
- 147 *Cyrenia martia themis*
- 148 *Detritivora barnesi*
- 149 *Detritivora sp rio claro*
- 150 *Emesis fatimella nobilita*
- 151 *Emesis lucinda*
- 152 *Emesis lupina lupina*
- 153 *Emesis mandana mandana*
- 154 *Emesis tenedia*
- 155 *Eurybia cyclopia cyclopia*
- 156 *Eurybia donna*
- 157 *Eurybia lycisca*
- 158 *Eurybia nicaeus nicaeus*
- 159 *Eurybia unxia*
- 160 *Lasaia agesilas agesilas*
- 161 *Lasaia meris*
- 162 *Leucochimona icare*
- 163 *Leucochimona lagora*
- 164 *Lyropteryx apollonia diana*
- 165 *Lyropteryx lyra cleadas*
- 166 *Melanis electron*
- 167 *Mesene phareus*
- 168 *Mesosemia asa iphigenia*
- 169 *Mesosemia pacifica*
- 170 *Mesosemia sp RioClaro*
- 171 *Mesosemia sp RioClaro 1*
- 172 *Mesosemia zonalis*
- 173 *Metacharis victrix*
- 174 *Monethe albertus*

- 175 *Nymphidium azanoides occidentalis*
- 176 *Nymphidium mantus*
- 177 *Nymphidium sp rioclaro*
- 178 *Pachythone gigas ignifer*
- 179 *Parcella amarynthina*
- 180 *Perophtalma tullius*
- 181 *Pheles strigosa strigosa*
- 182 *Rhetus periander*
- 183 *Sarota acantus*
- 184 *Sarota neglecta*
- 185 *Synargis calyce*
- 186 *Theope sp pedias-devriesi*
- 187 *Theope virgilius*
- 188 *Thisbe irenea belides*
- 189 *Thisbe lycorias*

## Lycaenidae

### Polyommatainae

- 190 *Cupido comyntas texana*
- 191 *Hemiargus hanno hanno*

### Theclinae

- 192 *Arawacus lincoides*
- 193 *Arawacus separata*
- 194 *Arcas imperialis*
- 195 *Aubergina paetus*
- 196 *Calycopsis buphonia*
- 197 *Calycopsis caesaries*
- 198 *Calycopsis calus*
- 199 *Calycopsis cerata*
- 200 *Calycopsis johnsoni*
- 201 *Calycopsis trebula*
- 202 *Celmia celmus*
- 203 *Cyanophrys herodotus*
- 204 *Erora caespes*
- 205 *Eumaeus godartii*
- 206 *Gargina emessa*
- 207 *Michaelus phoenissa*
- 208 *Ministrymon azia*
- 209 *Ministrymon phrutus*
- 210 *Panthiades phaleros*
- 211 *Pseudolycaena marsyas*
- 212 *Rekoa meton*
- 213 *Rekoa palegon*
- 214 *Rubroserrata ecbatana*
- 215 *Strymon bazochii*
- 216 *Strymon colombiana*

217 *Strymon gabatha*  
 218 *Strymon megarus*  
 219 *Strymon ziba*  
 220 *Theclopsis demea*  
 221 *Theritas hemon*  
 222 *Tmolus cydrara*  
 223 *Tmolus echion*

## Nymphalidae

### Apaturinae

224 *Doxocopa clothilda*  
 225 *Doxocopa cyane mexicana*  
 226 *Doxocopa pavon theodora*  
 227 *Doxocopa zunilda felderi*

### Biblidinae

228 *Biblis hyperia hyperia*  
 229 *Callicore lyca*  
 230 *Callicore pitheas*  
 231 *Callicore tolima denina*  
 232 *Catonephele numilia esite*  
 233 *Catonephele nyctimus*  
 234 *Catonephele orites*  
 235 *Diaethria clymena clymena*  
 236 *Diaethria sp x rioclaro*  
 237 *Dynamine arene*  
 238 *Dynamine chryseis*  
 239 *Dynamine paulina thalassina*  
 240 *Dynamine postverta mexicana*  
 241 *Ectima erycinoides erycinoides*  
 242 *Ectima thecla thecla*  
 243 *Eunica norica norica*  
 244 *Eunica orphise*  
 245 *Eunica pomona*  
 246 *Eunica volumna venusia*  
 247 *Hamadryas amphinome fumosa*  
 248 *Hamadryas arinome arienis*  
 249 *Hamadryas februa ferentina*  
 250 *Hamadryas iphthime iphthime*  
 251 *Hamadryas laodamia laodamia*  
 252 *Nessaea aglaura aglaura*  
 253 *Nica flavilla flavilla*  
 254 *Panacea prola prola*  
 255 *Pyrrhogyra crameri undine*  
 256 *Temenis laothoe columbiana*  
 257 *Temenis pulchra pulchra*

### Charaxinae

258 *Agrias amydon*  
 259 *Archaeoprepona camilla*  
 260 *Archaeoprepona demophon demophon*  
 261 *Archaeoprepona demophoon demophoon*  
 262 *Archaeoprepona meander*  
 263 *Consul fabius*  
 264 *Fountainea ryphea ryphea*  
 265 *Memphis anassa*  
 266 *Memphis cleomestra cleomestra*  
 267 *Memphis xenocles fisilis*  
 268 *Zaretis ellops*  
 269 *Zaretis isidora*

### Cyrestinae

270 *Marpesia chiron*  
 271 *Marpesia furcula*

### Danainae

272 *Aeria eurimedia eurimedia*  
 273 *Godyris zavaleta zavaleta*  
 274 *Hypoleria lavinia vanilia*  
 275 *Ithomia celemia celemia*  
 276 *Ithomia diasia galata*  
 277 *Ithomia iphianassa panamensis*  
 278 *Ithomia jucunda jucunda*  
 279 *Lycorea halia atergatis*  
 280 *Mechanitis lysimnia macrinus*  
 281 *Mechanitis polymnia veritabilis*  
 282 *Melinaea idae idae*  
 283 *Napeogenes stella stella*  
 284 *Oleria amalda amalda*  
 285 *Thyridia psidii melantho*  
 286 *Tithorea harmonia harmonia*

### Heliconiinae

287 *Dione junio junio*  
 288 *Dryadula phaetusa*  
 289 *Dryas iulia iulia*  
 290 *Eueides isabella*  
 291 *Heliconius erato hydara*  
 292 *Heliconius hecale melicerta*  
 293 *Heliconius sapho sapho*  
 294 *Heliconius sara sara*  
 295 *Laparus doris*

### Limnitiidinae

296 *Adelpha cytherea despoliata*  
 297 *Adelpha cytherea daguana*  
 298 *Adelpha iphicles iphicles*  
 299 *Adelpha malea fundania*

300 *Adelpha saundersii frontina*  
**Nymphalinae**  
 301 *Anartia amathea amathea*  
 302 *Anartia jatrophae jatrophae*  
 303 *Anthanassa drusilla drusilla*  
 304 *Castilia ofella*  
 305 *Chlosyne narva narva*  
 306 *Colobura dirce dirce*  
 307 *Eresia emerantia emerantia*  
 308 *Eresia eunice drypetis*  
 309 *Eresia ithomioides ithomioides*  
 310 *Eresia ithomioides mimas*  
 311 *Janatella leucodesma*  
 312 *Junonia evarete*  
 313 *Tegosa anieta anieta*  
 314 *Tigridia acesta columbina*

### Satyrinae

315 *Antirrhoea philaretos philaretos*  
 316 *Caerois gerdrudtus*  
 317 *Caligo atreus agesilaus*  
 318 *Caligo eurilochus eurilochus*  
 319 *Caligo oedipus oedipus*  
 320 *Caligo oileus scamander*  
 321 *Caligo telamoniunus menus*  
 322 *Catoblepia xanthicles xanthicles*  
 323 *Chloreuptychia amaca*  
 324 *Chloreuptychia callichloris*  
 325 *Cissia confusa*  
 326 *Cissia labe*  
 327 *Cissia pompilia*  
 328 *Cithaerias pireta pireta*  
 329 *Eretris oculata*  
 330 *Euptychia hannemanni*  
 331 *Euptychia mollina*  
 332 *Euptychia westwoodi*  
 333 *Haetera macleaniania*  
 334 *Harjesia blanda*  
 335 *Herneuptychia hermes*  
 336 *Magneuptychia libye*  
 337 *Megeuptychia antonoe*  
 338 *Morpho amathonte*  
 339 *Morpho cypris cypris*  
 340 *Morpho helenor peleides*  
 341 *Opsiphanes bogotanus bogotanus*  
 342 *Opsiphanes quiteria*  
 343 *Opsiphanes tamarindi tamarindi*

*Mariposas de Cañón río Claro - Reserva el Refugio*

---

- 344 *Pareuptychia ocirrhoe*
  - 345 *Pierella helvina*
  - 346 *Pierella luna luna*
  - 347 *Posttaygetis penelea*
  - 348 *Pseudodebis celia*
  - 349 *Pseudodebis marpessa*
  - 350 *Pseudodebis puritana*
  - 351 *Taygetis kerea*
  - 352 *Taygetis leuctra*
  - 353 *Taygetis virgilia*
- 

infEspecies por localidad listado - feb21 201