



Pirra Jungku Project species guide

The Pirra Jungku Project is a collaboration between the Karajarri Rangers, Environs Kimberley and the Threatened Species Recovery Hub with funding from the Australian Government's National Environmental Science Program and the Western Australian Government's NRM Program.

Reptiles

* Asterix means the animal can be tricky to ID. Take a good photo, or bring it back to camp for checking, but do this as a last resort. Don't bring back any snakes, in case they are poisonous.

Dragons

Upright posture (stick their heads up), have small, rough scales, each leg has 5 clawed fingers/toes.



MATT FROM MELBOURNE, AUSTRALIA CC BY 2.0 WIKIMEDIA COMMONS

Slater's ring-tailed dragon
(*Ctenophorus slaterii*)

Rocky country. Reddish colour with black spots on back and dark rings on the tail.



JESS MILLER

Central military dragon
(*Ctenophorus isolepis*)

Sandy country. Very fast on ground. Reddish colour with white spots and stripes.



JESS MILLER

Pindan dragon
(*Diporiphora pindan*)

Thin, slender body. Two long white stripes down back that cross over black and orange tiger stripes.*



ARTHUR CHAPMAN

Horner's dragon
(*Lophognathus horneri*)

Ta-ta lizard. White stripe from lip to back legs. Tiny white spot in ear.



NICOLAS RAKOTOPARE

Northern Pilbara tree dragon
(*Diporiphora vescus*)

Lives in spinifex. Plain colour, sometimes with orange tail, and long white and grey stripes down body.*



SARAH LEGGE

Dwarf bearded dragon
(*Pogona minor*)

Grey with flat body with spiny edges. Has small spines on either side of the jaw and on the back of the head.

Geckos

Do not have eyelids, have long toes and padded fingers, soft skin.



Desert fat-tailed gecko
(*Diplodactylus laevis*)
Fat tail and skinny fingers and toes with no toe pads.



Robust termitaria gecko
(*Gehyra kimberleyi*)
Pale to dark brown in colour with alternating rows of dark and light spots. Has toe pads for climbing.*



Purple dtella
(*Gehyra purpureascens*):
Pale purplish grey in colour with dark grey or brownish-grey spots or streaks which form a net-like pattern across the body. Toe pads for climbing.*



Bynoe's gecko
(*Heteronotia binoei*)
Covered with scales which look prickly but are soft when you touch them. Colour and pattern can vary greatly. No toe pads.



Sand-plain gecko
(*Lucasium stenodactylus*)
Pinkish to reddish-brown with white spots or a white stripe which branches to form a Y shape near the head. Colour and pattern can vary. No toe pads.



Western beaked gecko
(*Rhynchoedura ornata*)
Reddish brown with pale spots which have dark edges. Have dark markings or stripes on the back. Colour and pattern can vary. No toe pads.



Northern spiny-tailed gecko
(*Strophurus ciliaris*)
Has long spines along the top of the tail and above the eye. Colour light to dark grey. Toe pads for climbing.



Jewelled gecko
(*Strophurus elderi*)
Brown or grey with tiny white spots which have a black border. Has a short, swollen tail.

Legless lizards

No front legs, small flaps where the back legs would normally be, thick tongue (snakes have a thin, forked tongue) and obvious ear holes. Sometimes have re-grown tail, which a snake never has.



Rusty-topped delma
(*Delma borea*)
Brown to grey in colour with 3-4 black bands on the head which extend down on either side to the throat.*



Unbanded delma
(*Delma butleri*)
Doesn't have strong pattern on top of head, but can have thin whitish bars on side of head. Fine dark edges to body scales.*



SARAH LEGGE

Desert delma

(*Delma desmosa*)

Brown with 3-4 dark bands on the head and neck.*



STEWART MACDONALD

Black-necked delma

(*Delma tincta*)

Greyish-brown to reddish brown with 3-4 dark bands on head and neck in young lizards. Tail is nearly 4 times the length of the body.*



MATT CLANCY WILDLIFE PHOTOGRAPHY CC BY 2.0 WIKIMEDIA COMMONS

Burton's legless lizard

(*Lialis burtonis*)

Pencil lizard. Pointed, wedge-shaped nose and thin, slit-like pupils. Colour and pattern can vary.



STEWART MACDONALD

Western hooded scaly-foot

(*Pygopus nigriceps*)

Obvious flaps for back legs. Light brown body with pattern. Large black patch on back of head and black stripe through eyes.*

Skinks



SARAH LEGGE

Desert rainbow-skink

(*Carlia triacantha*)

Greyish-brown with pale stripe under eye. Breeding male has a shiny green head and neck with reddish-brown flanks. Has 4 fingers and 5 toes.



STEWART FORD

Giant desert/grand ctenotus

(*Ctenotus grandis*)

Big body. Reddish-brown with 5 narrow dark stripes running down the centre of the back and small pale dots on either side of the body and legs.



SARAH LEGGE

Spotted-necked ctenotus

(*Ctenotus greeri*)

Dark brown with white dots and dashes on either side of the body. Has a dark stripe with white edges running down the centre of the back and two white stripes on either side.*



JENNY KS CC BY SA 3.0 WIKIMEDIA COMMONS

Clay-soil ctenotus

(*Ctenotus helenae*)

Olive brown to shiny greenish-brown with no pattern or with dark stripes running down the back.*



SARAH LEGGE

Bar-shouldered ctenotus

(*Ctenotus inornatus*)

Brown with 2 white stripes running down either side of the back.



Leopard ctenotus
(Ctenotus pantherinus)
 Copper brown to greenish-brown in colour with dark-bordered white/ pale spots.



Fourteen-lined skink
(Ctenotus quattuordecimlineatus)
 Reddish brown with 14 black or whitish stripes running down the back and tail.



Coarse sands ctenotus
(Ctenotus piankai)
 Reddish brown with 6-8 pale narrow stripes running down the back.*



Rock ctenotus
(Ctenotus saxatilis)
 Olive-brown to reddish-brown in colour with a white-bordered dark stripe running down the centre of the back.*



Barred wedgesnout ctenotus
(Ctenotus schomburgkii)
 Olive to orange-brown with black stripes running down the centre of the back and two white stripes on either side. Has pale spots/ blotches on the flanks.*



Mosaic desert skink
(Eremiascincus musivus)
 Pale yellowish to orange-brown with a pale stripe running down the centre of the back from head to tail and spots all over the body forming a net-like pattern.



North-western sandslider
(Lerista bipes)
 Pointed head. No front legs, back legs have 2 toes each.



Dampierland slider
(Lerista separanda)
 Has a dark stripe along the sides of the body. Orange tail. Has four legs with 4 fingers/toes each.



Slender worm-slider
(Lerista vermicularis)
 Sand dunes. Thin with a flat, pointed nose. Pale yellowish brown to pinkish brown in colour. Has no front legs, back legs have 2 toes each.



Common dwarf skink
(Morethia greyii)
 Very small, has 4 fingers and 5 toes. Brownish grey to grey in colour with dark dashes on the back and a dark stripe running across either flank.



Lined fire-tailed skink
(Morethia ruficauda)
 Five fingers and 5 toes. Black and white stripes down the side of the body. Tail is red.



Ornate soil-crevice skink
(Notoscincus ornatus)
 Big eyes, and coppery brown colour. Black side-stripe and sometimes dots on the back.



CHRIS JOLLY

Western soil-crevice skink
(*Proablepharus reginae*)

Has a long tail and big eyes. Brown with dark-bordered scales forming a net-like pattern. Breeding males have red on the sides of their head and neck.*



STEWART MACDONALD

Northern soil-crevice skink
(*Proablepharus tenuis*)

Copper brown to olive-grey. Mature males are red on the sides of their head and neck.*



ENVIRONS KIMBERLEY

Centralian blue-tongued skink
(*Tiliqua multifasciata*)

Blue tongue with black stripe behind eye.

Goannas



BENJAMINT444 GFDL 1.2 PUBLIC DOMAIN

Ridge-tailed monitor
(*Varanus acanthurus*)

Spiny tail which has lighter rings. Many spots with dark centres all over body.



JESS MILLER

Pygmy short-tailed monitor
(*Varanus brevicauda*)

Small goanna with short tail and no stripes along tail.



JESS MILLER

Pygmy desert monitor
(*Varanus eremius*)

Small goanna with reddish body and white stripes along tail.



SARAH LEGGE

Pygmy mulga monitor
(*Varanus gilleni*)

Small, grey goanna with dark bands across body and tail.

Blind snakes

Worm-like snakes which burrow into the ground; head and tail are the same thickness.



SARAH LEGGE

Northern blind snake
(*Anilius diversus*)

Pink body with rounded head.*



JESS MILLER

Long-beaked blind snake
(*Anilius grypus*)

Very skinny, pink body with black head and tail.*



NICOLAS RAKOTOPARE

Interior blind snake

(Aniliios aff. endoterus)

Medium sized, pale head with pointed snout.*

Snakes



JESS MILLER

North-western shovel-nosed snake

(Brachyuorphis approximans)

Pointed head. More greyish, and dark bands across body are more than 4 times as broad as the white bands. Venomous but do not bite if kept calm.



SARAH LEGGE

Northern shovel-nosed snake

(Brachyuorphis roperi)

Pointed head and dark bands across body. Venomous but do not bite if kept calm.



SARAH LEGGE

Narrow-headed whipsnake

(Demansia angusticeps)

Skinny, fast snake with white 'tear drop' and yellow along the side of body. Venomous but do not bite if kept calm.



CHRISTOPHER WATSON CC BY SA 3.0 WIKIMEDIA COMMONS

Moon snake

(Furina ornata)

Reddish/yellowish-brown in colour with a shiny black head and a bright orange stripe going across the middle of the head. Mildly venomous.



MACDONALD C BY 3.0 WIKIMEDIA COMMONS

Mulga (king brown) snake

(Pseudechis australis)

Brown, scales have thin dark edges. Dangerously venomous.



KAMAHL BANGU

Gwardar

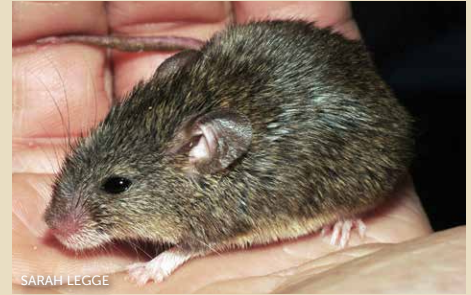
(Pseudonaja mengdeni)

Fast, slender snake with big eye and variable pattern. Can be orange body with black head, or brown with stripes. Dangerously venomous..

Mammals



Lesser hairy-footed dunnart
(*Sminthopsis youngsoni*)
Small with a pointed nose, big black eyes, big ears, sharp teeth and broad, hairy feet. Brownish-yellow in colour above and white below. Base of tail is swollen.



Northern short-tailed mouse
(*Leggadina lakedownensis*)
Grey-brown to grey with white belly and white feet. Tail is short (shorter than length of head and body).



Delicate mouse
(*Pseudomys delicatulus*)
Smaller than a house mouse, has a long tail. Brown to orange-brown with white belly and cheeks. Nose, feet and tail are pink.



Desert mouse
(*Pseudomys desertor*)
Brown with light grey/brown belly, scaly tail and big eyes which have an orange ring. Has some long dark hairs which make the mouse seem spiny.



Sandy inland mouse
(*Pseudomys hermannsburgensis*)
Brown to grey-brown fur with white belly and cheeks. Looks very similar to the delicate mouse.



Spinifex hopping mouse
(*Notomys alexis*)
Big mouse with big ears and eyes. Hops on back legs. Very long tail with hairy tuft on the end.

Other mammals found in the area are:

- Brushtail possum (*Trichosurus vulpecula*)
- Greater bilby (*Macrotis lagotis*)
- Dingo (*Canis lupus dingo*)
- Camel (*Camelus dromedarius*)
- Cat (*Felis catus*)
- Fox (*Vulpes vulpes*)

Frogs



NIGEL JACKETT

Giant frog
(*Cyclorana australis*)

Big brown or green frog similar to a cane toad. Large, dark ear disc. No toe pads.



MAGDALENA B FLICKR PUBLIC DOMAIN

Green tree frog
(*Litoria caerulea*)

Large, plain green frog with obvious toe pads.



GREG SCHECHTER CC BY 2.0 WIKIMEDIA COMMONS

Bumpy rocket frog/Peter's frog
(*Litoria inermis*)

Lives in creeks and excellent jumper. Brown with bumps on back and yellow markings on legs. Has tiny toe pads.



CHRISTOPHER WATSON CC BY SA 3.0 WIKIMEDIA COMMONS

Desert/red tree frog
(*Litoria rubella*)

Light brown with a black stripe running along the side of its body starting from the tip of the nose. Has toe pads.



SARAH LEGGE

Desert spadefoot
(*Notaden nichollsi*)

Burrowing frog. Body is round and fat with many orange, red, brown, black and white spots and black patches on the back. No toe pads.



NIGEL JACKETT

Mjoberg's toadlet
(*Uperoleia mjobergii*)

Very small burrowing frog. Pale brown or grey with darker patches and dark stripes across the back legs. No toe pads.