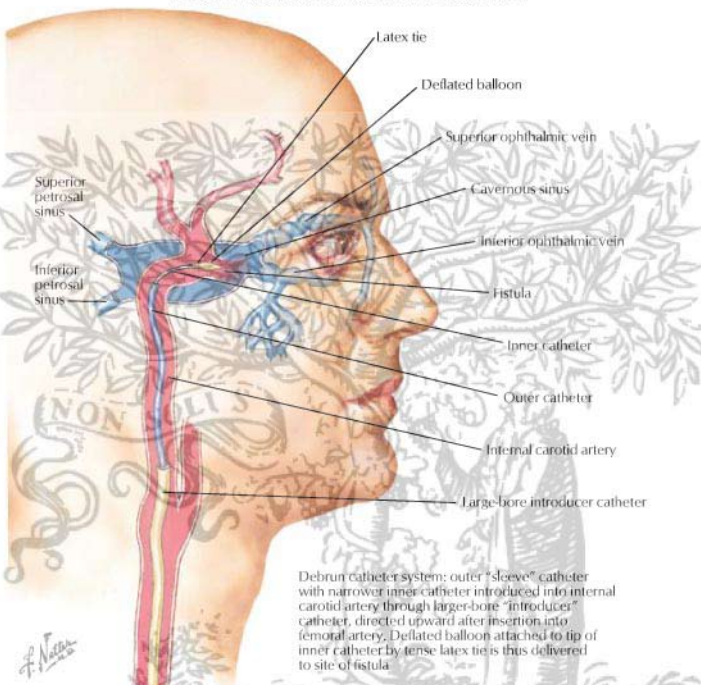
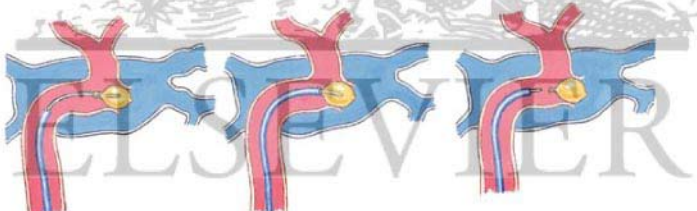


# Balloon Embolization of Carotid-Cavernous Fistula



Debrun catheter system: outer "sleeve" catheter with narrower inner catheter introduced into internal carotid artery through larger-bore "introducer" catheter, directed upward after insertion into femoral artery. Deflated balloon attached to tip of inner catheter by tense latex tie is thus delivered to site of fistula



Ballon inflated with radiopaque fluid occluding fistula

Outer catheter advanced over inner catheter to engage balloon cuff

Balloon liberated by slight pull on inner catheter. Balloon neck spontaneously constricted by tense latex tie. All catheters then withdrawn