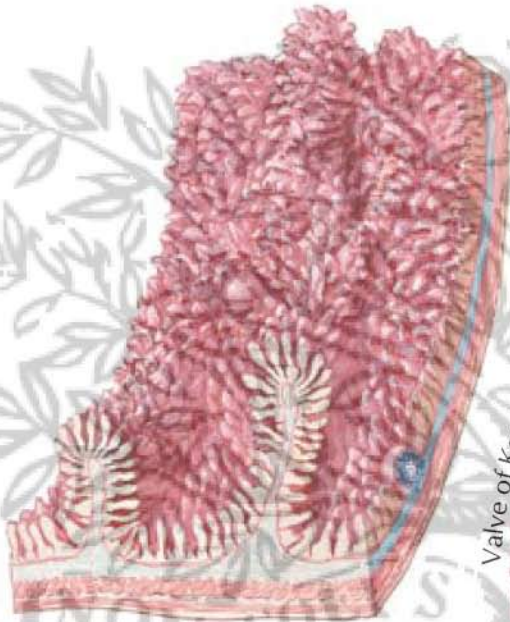


Jejunum  
(high power)

Two jejunal  
villi (x100);  
(left in  
contraction,  
right relaxed)

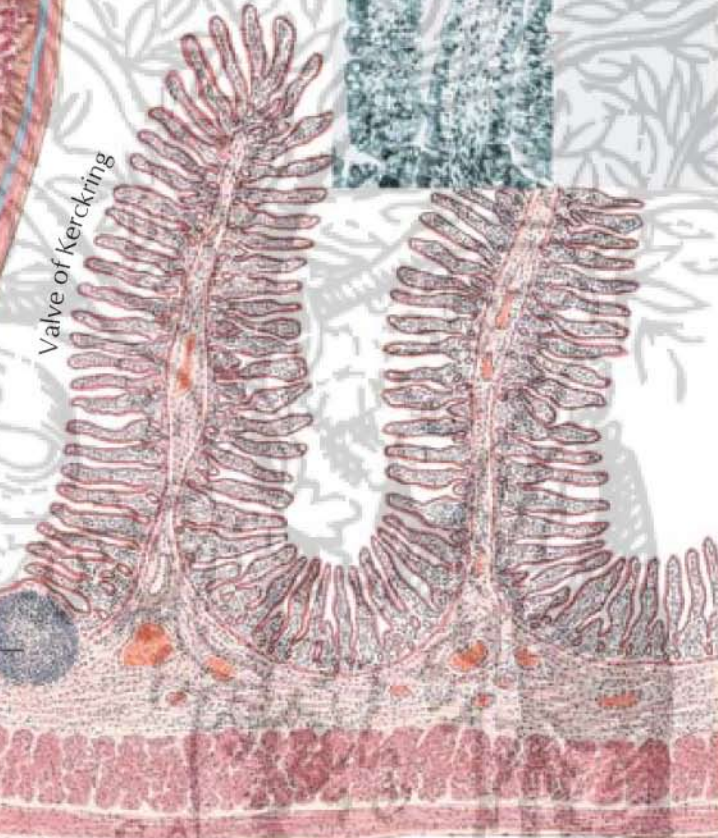


Three-dimensional  
magnification of  
jejunal wall

Valve of Kerckring



- Epithelium
- Villus
- Lamina propria
- Lymph nodule
- Crypt of Lieberkuhn
- Muscularis mucosae
- Submucosa
- Circular muscle
- Longitudinal muscle
- Serosa



Jejunum (low power)



Ileum (low power)

- Epithelium
- Villus
- Lamina propria
- Crypt of Lieberkuhn
- Muscularis mucosae
- Aggregated lymph nodule
- Submucosa
- Circular muscle
- Longitudinal muscle

Serosa

*F. Netter M.D.*