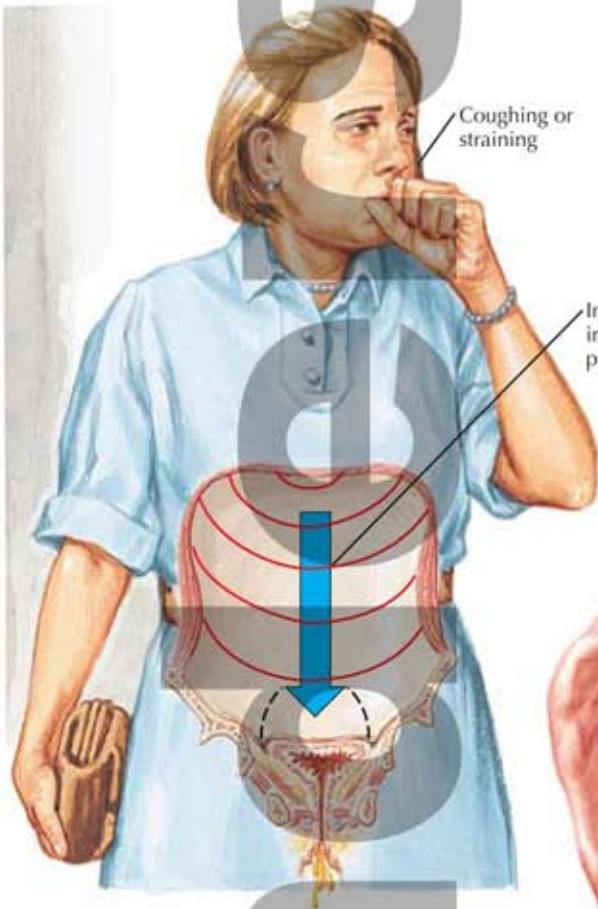
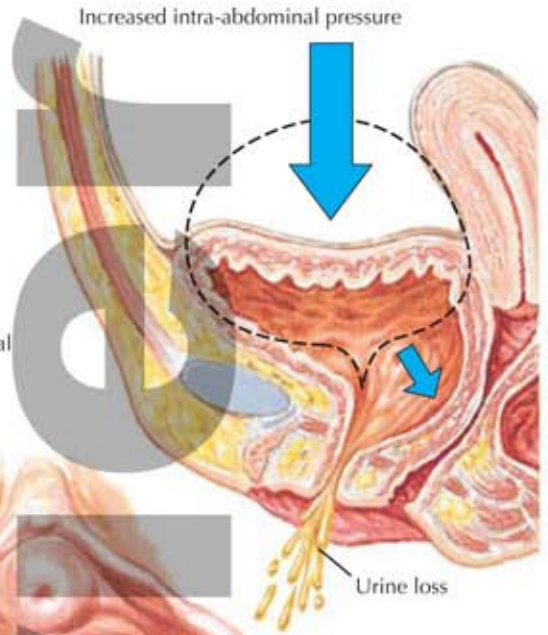


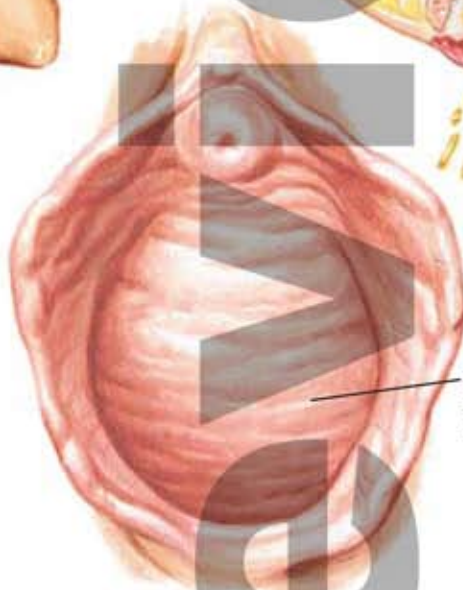
Stress Incontinence



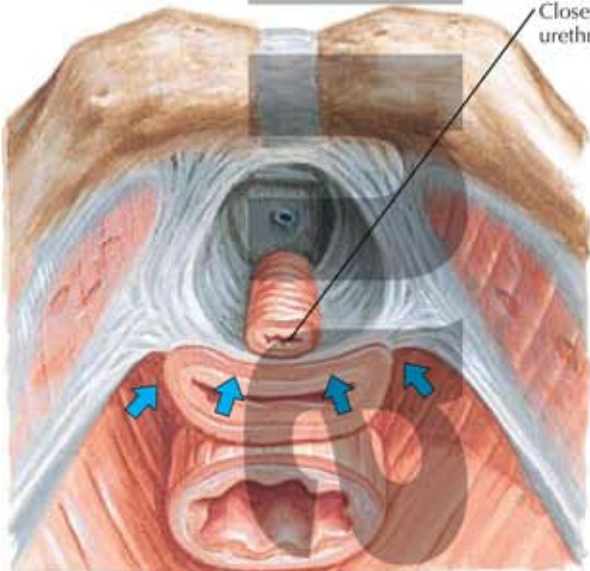
Patient with defective fascial support of urethrovesical (U-V) junction. Increased intra-abdominal pressure results in urine loss



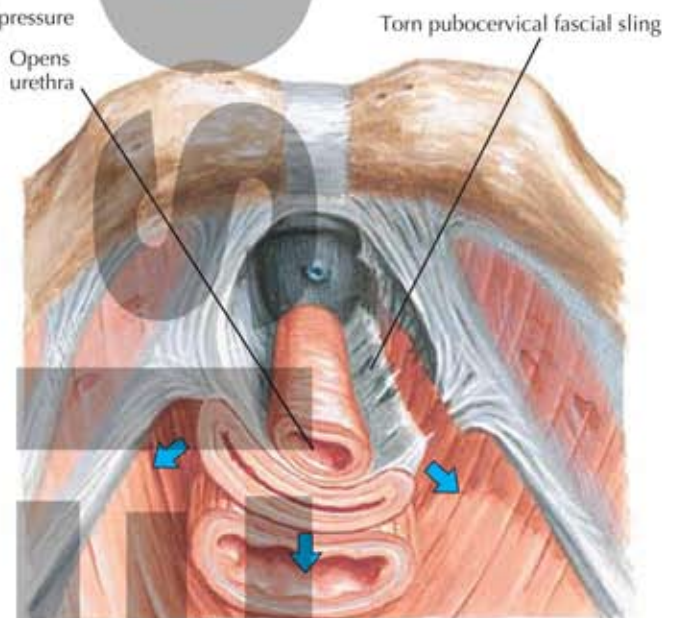
JOHN A. CRAIG, MD
C. Machado, M.D.



Normal pubocervical fascial support



Increased intra-abdominal pressure forces urethra against intact pubocervical fascia, closing urethra and maintaining continence



Defective fascial support allows posterior rotation of U-V junction because of increased pressure, opening urethra and causing urine loss