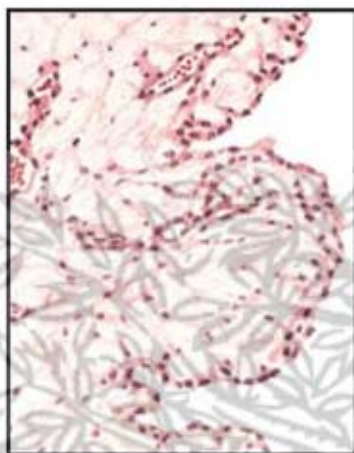
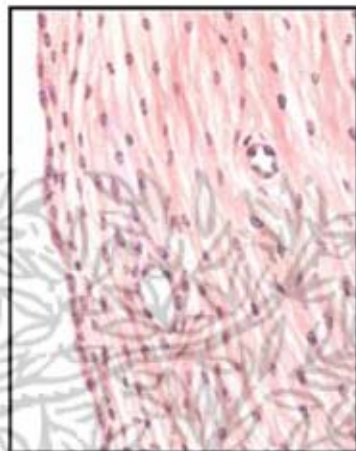


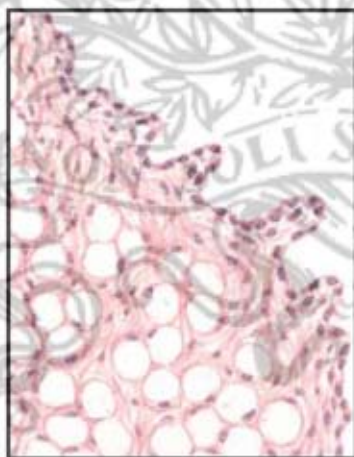
## Structure and Function of Synovial Membrane



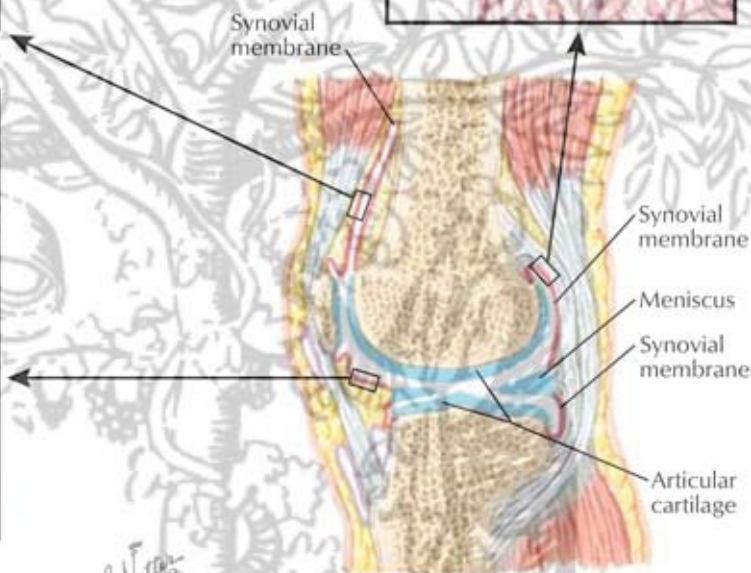
Areolar synovial membrane



Fibrous synovial membrane



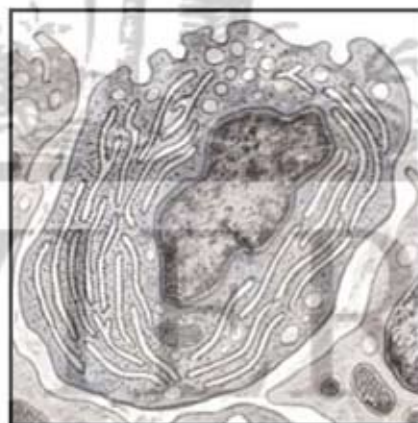
Adipose synovial membrane



Sagittal section of knee joint (lateral to midline)



Electron micrograph shows type A cell of synovial lining characterized by many vacuoles, lysosomes (dark bodies), mitochondria, and filopodia but little endoplasmic reticulum, all evidence of macrophage and phagocytic function



Type B cell of synovial lining shows much rough endoplasmic reticulum and pinocytotic vesicles, related to its presumed function of synthesizing and excreting hyaluronic acid and glycoprotein for synovial fluid