

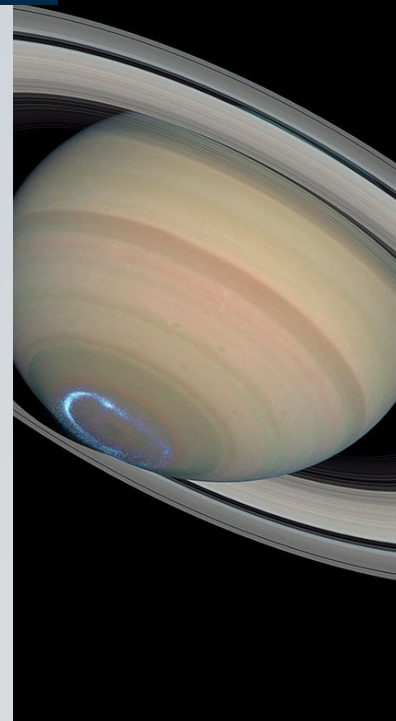
### A Message From The SATURN Study Team:

Happy Autumn!

Thank you to all of you for your hard work! SATURN is very close to reaching a new milestone. So far, we have enrolled 140 subjects. Only 10 more to reach 150. We are planning a surprise (as a special recognition) to the site(s) that help to reach this goal. Your site could be the one that brings us to this important achievement.

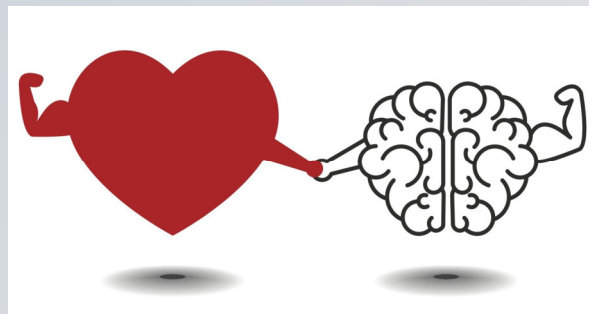
Thanks to you, we can end 2021 on a strong note!

Sincerely,  
The SATURN Team



## Talking to the Statin Prescriber

As we discussed in our last SATURN webinar, we have created a script for conversations with cardiologists or any other statin prescriber. This may be useful as a guideline for discussing how to go about addressing statin continuation vs. discontinuation as part of the study. The script can be found in the Toolbox folder on WebDCU.



### Inside this issue:

- Introduction
- Talking to the statin prescriber
- Enrollment Updates
- Updates

### Got Questions?

- E-Mail us at:  
[SATURN@bidmc.harvard.edu](mailto:SATURN@bidmc.harvard.edu)
- For 24/7 Clinical Hotline urgent questions call +1-617-667-7000 & ask to page beeper #39636  
re: SATURN Trial

## Enrollment Updates

### Newest Enrollers

University of Alabama Hospital, Birmingham, AL

Rhode Island Hospital, Providence, RI

MetroHealth Medical Center, Cleveland, OH

WVU Healthcare Ruby Memorial Hospital, Morgantown, WV

OSU Wexner Medical Center, Columbus, OH

Yale New Haven Hospital, New Haven, CT

Beth Israel Deaconess Medical Center, Boston, MA

Hamilton General Hospital, Hamilton, ON, Canada

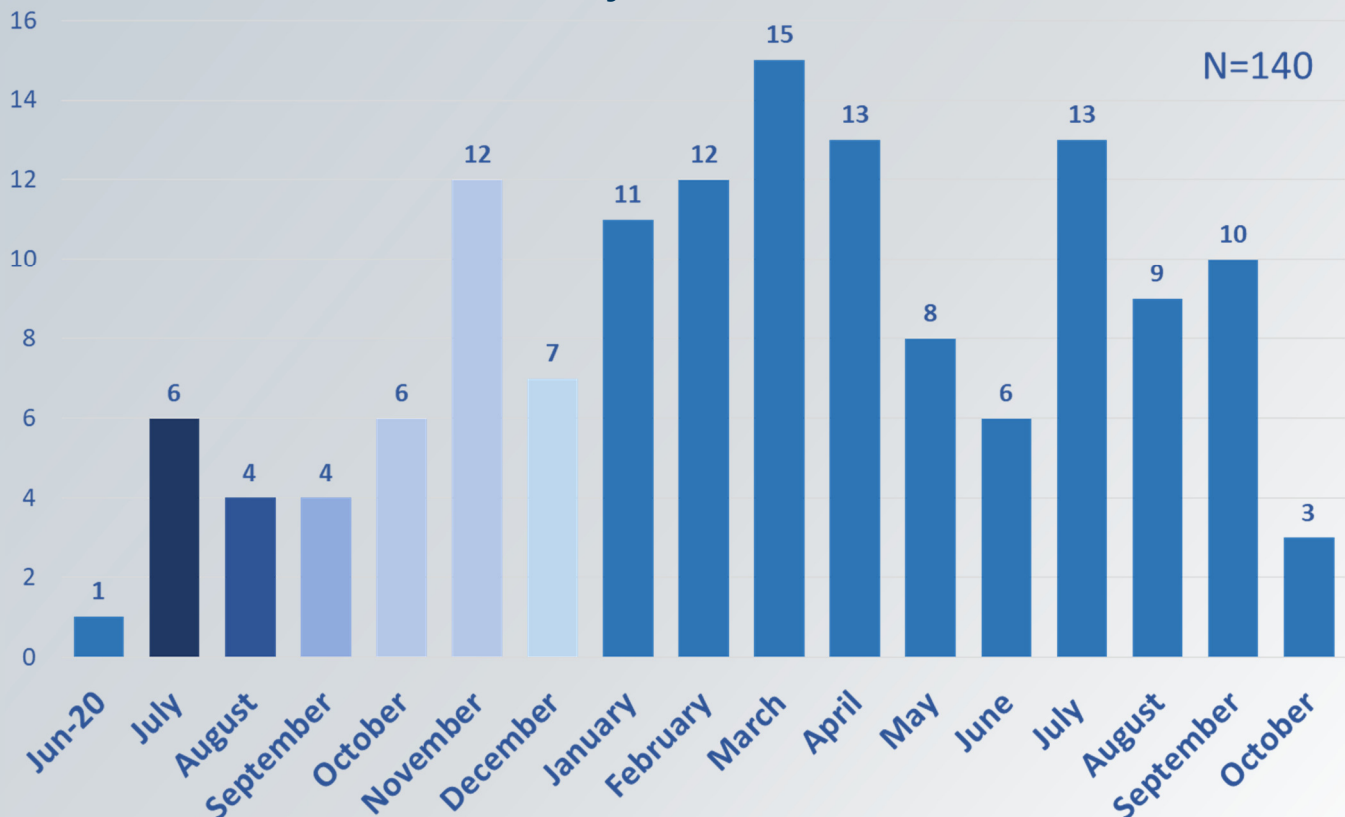
Carolinas Medical Center, Charlotte, NC

University of Utah Healthcare, Salt Lake City, UT

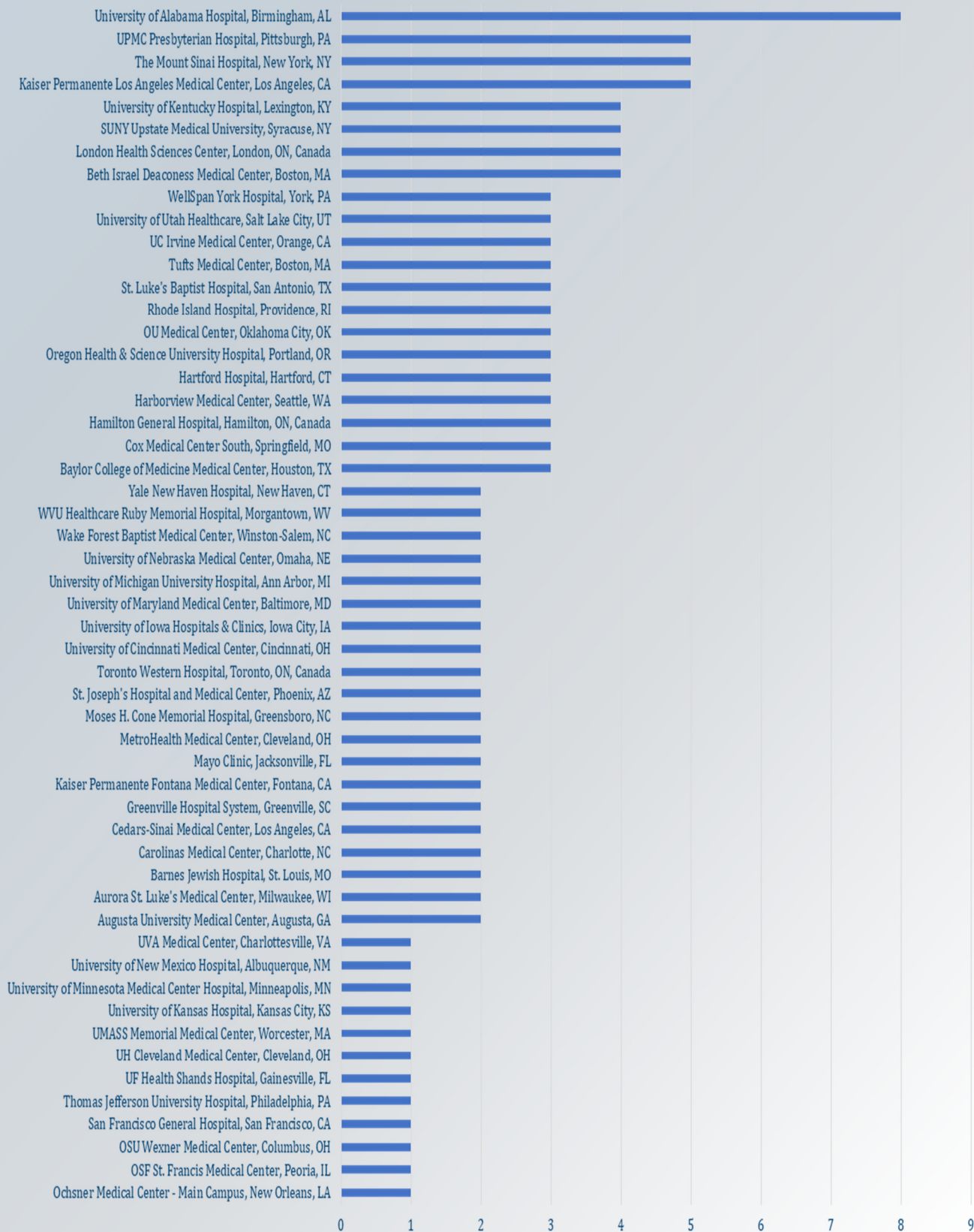
UPMC Presbyterian Hospital, Pittsburgh PA



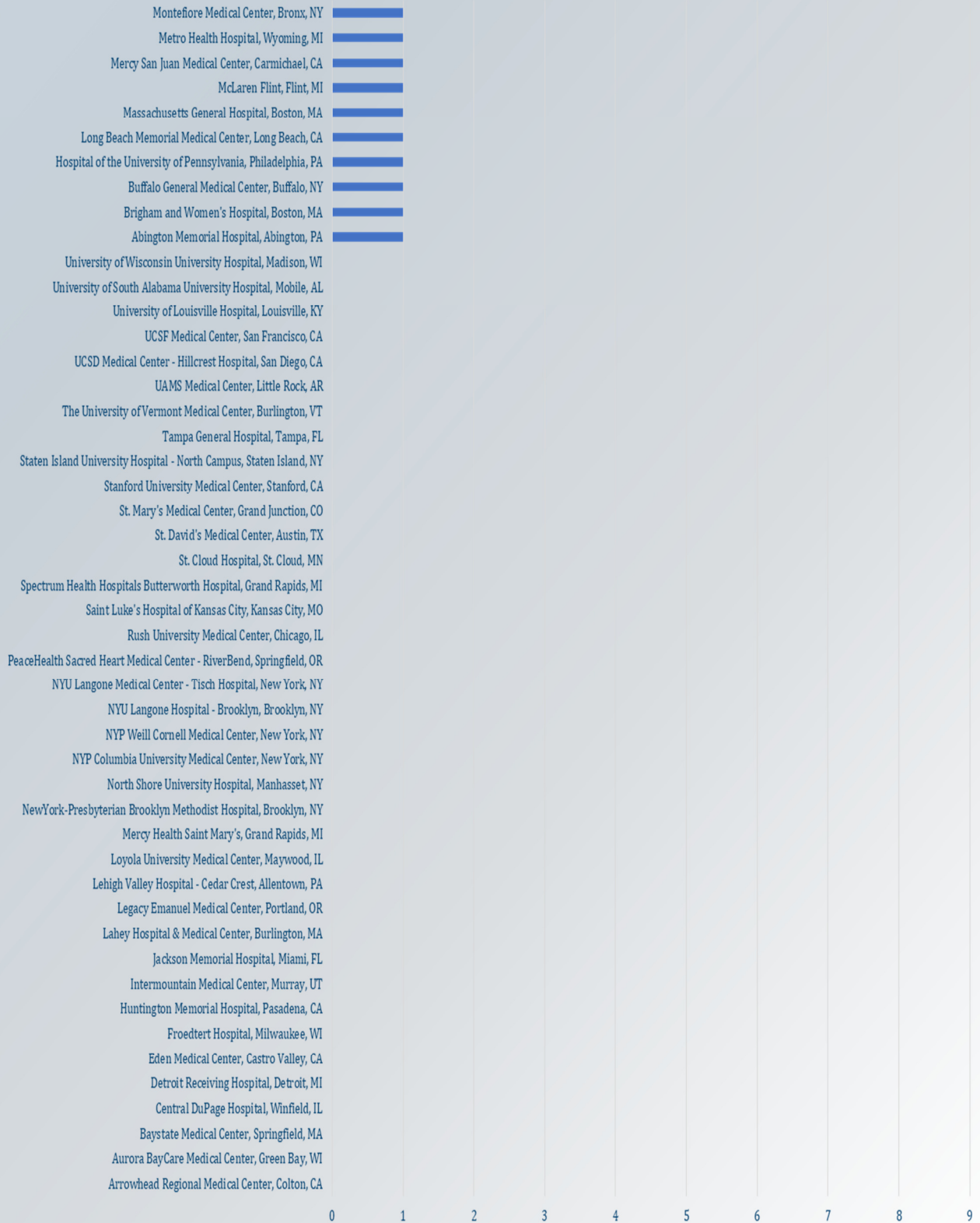
### Monthly Enrollment Status



## Total Enrollment By Site



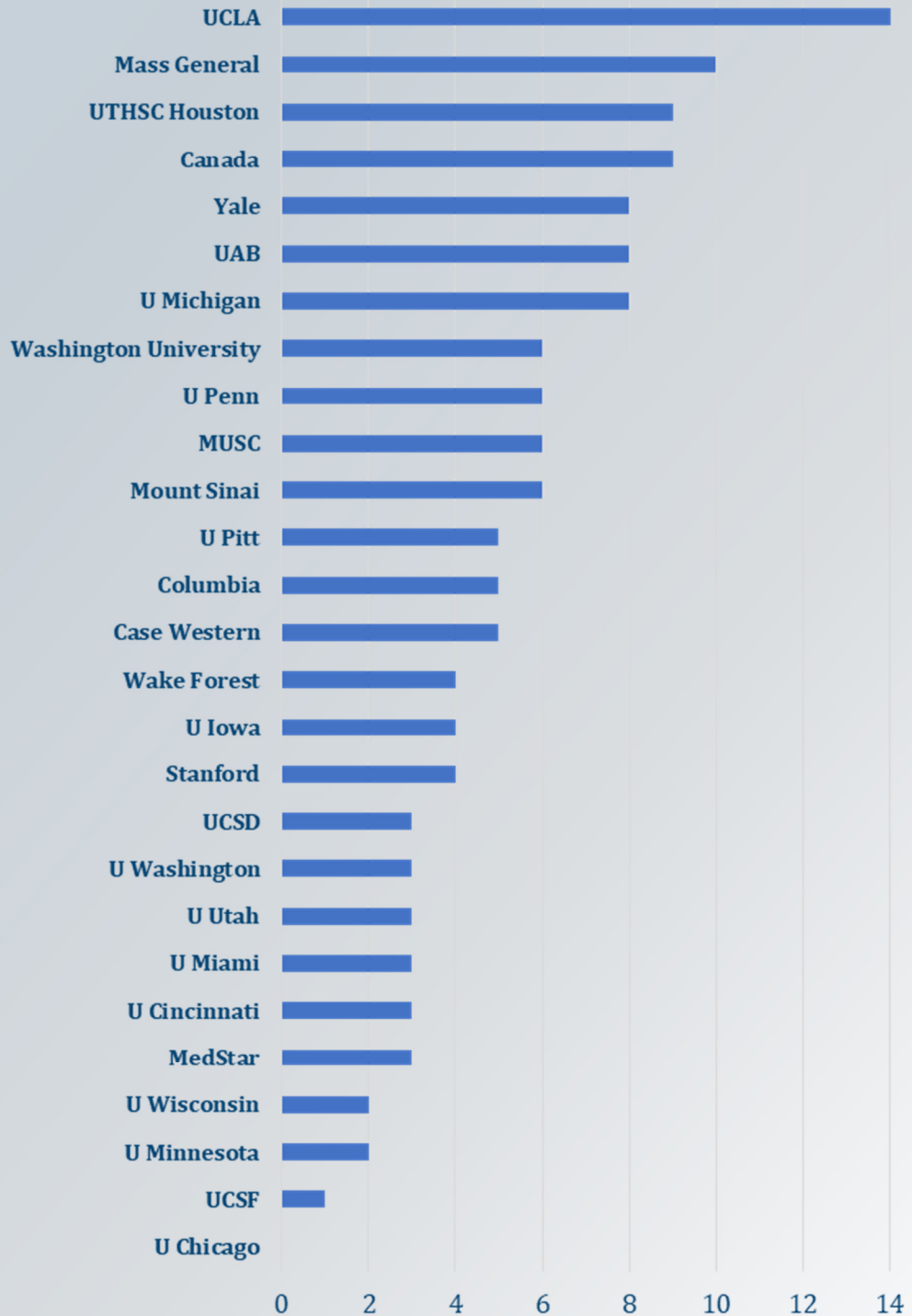
## Total Enrollment by Site





## Enrollment Updates

### Total Subjects Enrolled by RCC



## Updates

### DSMB Meeting Updates

The NINDS-appointed Data and Safety Monitoring board met on October 6, 2021 to review available data from the SATURN trial. At the conclusion of the review, no safety concerns were identified, and a recommendation was made to continue enrollment". The DSMB expressed concerns regarding the slow pace of recruitment but was understanding of the challenges imposed by the pandemic. Let's all rally to catch up before the next DSMB meeting.

### Abstract Submission

The SATURN Team wanted to inform you of our intention to submit an ongoing clinical trials abstract submission to the International Stroke Conference where authorship will include the principal investigators of high performing SATURN sites. The deadline for submission is November 3rd. We will tally overall enrollment and enrollment rate per site on October 31st. Site Principal Investigators with the highest performance will be invited to serve as co-authors on the abstract. Authorship order will be based on the rate of enrollment. We will make all attempts to include at minimum all site PIs who have enrolled at least 3 subjects by October 31st.

### Randomization CRFs

The NIHSS and GCF assessments collected for Randomization need to be evaluated **BEFORE** the day of randomization. Oftentimes these assessments are completed as a part of clinical care when of the patient is admitted. This information is normally documented in the patient's chart.


### Hospital Discharge CRFs

All Hospital Discharge Visit CRFs should be completed +/- 5 days of patient discharge from the hospital. If this visit is not added and completed to WebDCU by the 90 Day Visit, the central assessors are not able to upload any subsequent study visits.


## Updates

### New REDCAP Questions

We have added two new questions to our REDCap subject survey! Please update your enrolled subjects' date of birth and pronouns in their REDCap survey.

<p><b>Subject DOB</b> * must provide value</p>	<input type="text"/>  Today M-D-Y
<p><b>WebDCU Subject ID</b> * must provide value</p>	<input type="text"/>
<p><b>Subject Pronouns</b> * must provide value</p>	<input type="text"/>

To edit an existing survey, go to the original survey link (<https://is.gd/SATURNtrial>), and hover over the top right corner of the page where it says 'Returning?'

 **Returning?** Begin where you left off.

If you have already completed part of the survey, you may continue where you left off. All you need is the return code given to you previously. Click the link below to begin entering your return code and continue the survey.

[Continue the survey](#)

From there, click 'Continue the survey' in the pop-up and it will take you to the page where you can enter your return code and edit the original survey.

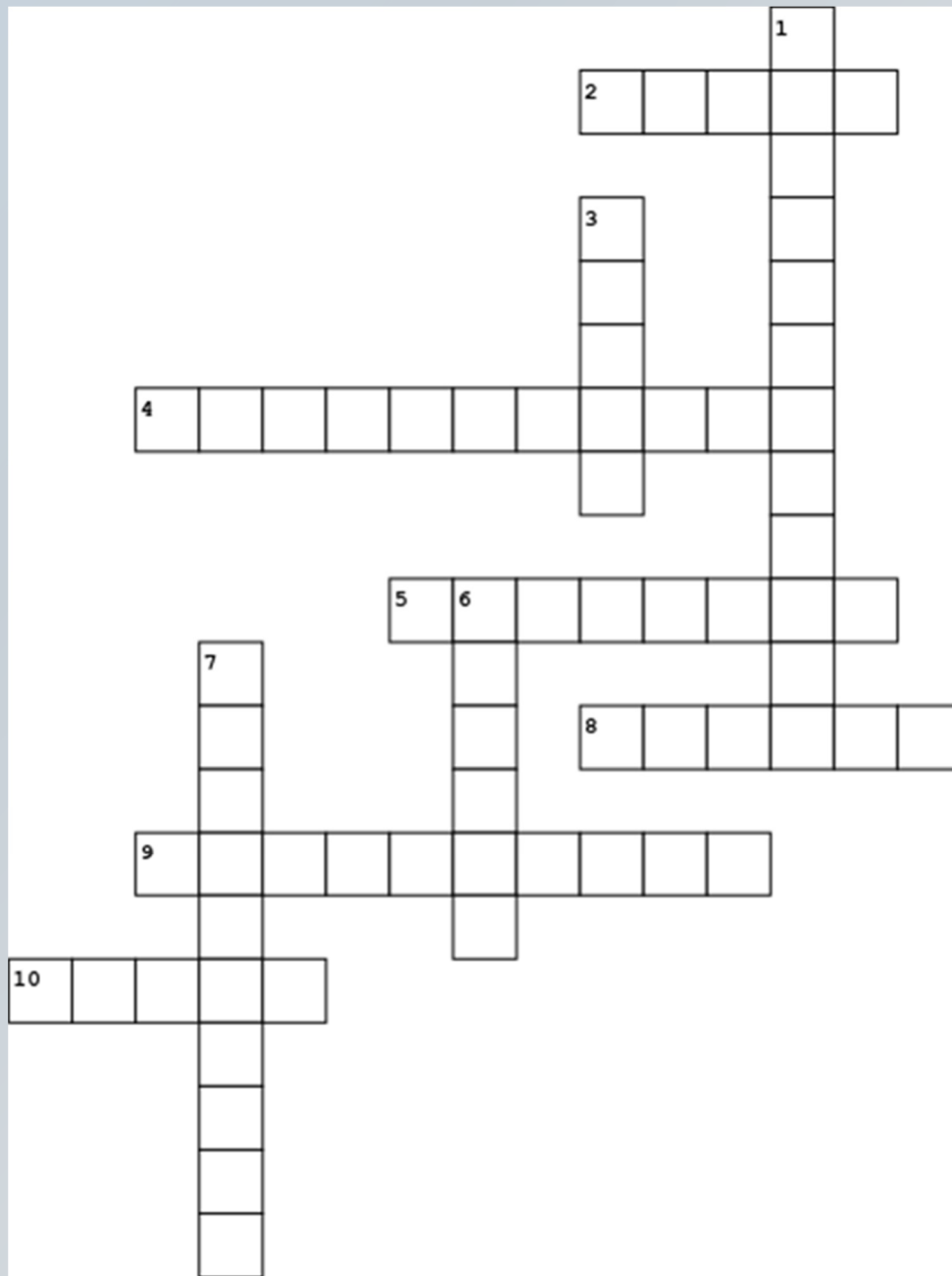
**Subject Contact Info**

To continue the survey, please enter the RETURN CODE that was auto-generated for you when you left the survey. Please note that the return code is \*not\* case sensitive.

[Submit your Return Code](#)

If you cannot remember or lost your return code, please contact Filipa (fcarvalh@bidmc.harvard.edu) and she can look it up for you!

## SATURN Crossword Puzzle



Prize alert: The first three people to send Elizabeth (eheistan@bidmc.harvard.edu) a completed and correct crossword puzzle, will receive a special Halloween prize! Please email a screenshot of your submission to Elizabeth with the subject line "SATURN Newsletter Crossword".

Across

Down

- 2. Location of screen-fail hemorrhage
- 4. Waxy substance found in your blood
- 5. Non-Qualifying stroke
- 8. Lipid-lowering medication
- 9. Has to be a lobar one to qualify
- 10. Number of days of enrollment window

- 1. A physician who needs to be on board with the subject's randomization assignment
- 3. Highest mRS value allowable
- 6. Most distant planet that can be seen with the naked eye
- 7. Some strokes in this location qualify