



Welcome to the 2021 NOFA Tri-State Bulk Order. Thank you for participating!

**The NOFA Tri-State Bulk Order will be accepting orders from January 1st to January 31st.**

Your Bulk Order team is thrilled to present the 2021 Bulk Order! Participating in the Bulk Order is a great way to access great products at affordable prices while supporting NOFA at the same time.

We have one new pick up site this year: **Natick Community Organic Farm in Natick, MA!** This replaces last year's pickup in Sherborn, and will serve the Metro-Boston area. Pick Up Sites are listed below; as are preliminary distribution hours. Stay tuned for information about how the COVID pandemic will shape this year's pickup experience.

There are **NEW** items in almost every section this year, so take a look. We are expanding our offerings from leading suppliers in sustainable and regenerative agriculture, including John Kempf's company, AEA. We've added quite a few new livestock products from our friends at Fertrell. Also new to this year's bulk order is an array of new hand tools, field and garden supplies, and harvesting and packing materials. We have also found that COVID has impacted the availability of some of the products we know and love in quite unexpected ways. Our cover crop selection has been particularly affected: we have been informed that organic grasses (oats, sudangrass, corn, etc.) are in short supply, and that organic tillage radish seed is short, and prices are through the roof. We have opted to carry only a limited selection of these products this year for those reasons, and encourage you to place orders directly with suppliers as soon as possible to maximize your chances of getting some of these limited supply items.

Ordering can be accomplished via our bulk order website – [www.nofabulkorder.org](http://www.nofabulkorder.org) - where you can browse the bulk order items, place your order, and pay for it easily and securely. You can also submit your order online without paying and mail a check post-dated by 1/31/21 (your order will be confirmed upon receipt of payment). You can also place orders via our two-page order form. Simply fill out the required fields, and mail your order form with payment (see address below). If using the order form please note the three-digit item numbers after the description of each item.

For the sake of space, we have included only brief descriptions of the products. If you want more information on the items, please look up the item on the supplier website. If you are looking for participating suppliers' products not listed on our form, we may be able to order them for you. **Contact the Bulk Order Team ([bulkorder@nofamass.org](mailto:bulkorder@nofamass.org)) by January 20th** for price, availability and ordering instructions for special orders before you complete your form.

**A Note for Certified Organic Farms:**

Baystate Organic Certifiers has reviewed and allowed all items with a few exceptions, which are clearly noted near the price. Many items are Restricted and identified by asterisks \* and other symbols; read section headers for details. Approvals differ by state. RI growers should check with their certifier.

Happy ordering and thank you for supporting NOFA!

Your Bulk Order Team,

*Caro Roszell, Barrie Anderson*  
[bulkorder@nofamass.org](mailto:bulkorder@nofamass.org)

**Bulk Order Suppliers** .....

We are pleased to be working with the following suppliers:

- ECF** Earth Care Farm, RI: compost & potting soil  
www.earthcarefarm.com
- ICC** Ideal Compost Company, NH: compost, potting soil  
www.idealcompost.com
- NCO** North Country Organics, VT: mineral amendments & fertilizers  
www.norganics.com
- OGS** Organic Growers Supply & Moose Tubers, ME: mineral amendments, cover crop seeds, useful items,  
potato & allium seed  
www.fedcoseeds.com
- PGS** West Wareham: amendments, useful things & cover crop seed  
www.progressivegrower.com
- VCC** Vermont Compost Company, VT: compost & potting soil  
www.vermontcompost.com

**Pickup Day for Most Sites:**

**Potting soil, tools, amendments, seed and other items:** March 13

**Tubers, Onions, and Backordered Items:** April 17

Site pickup hours vary; see schedule below for specifics.

**Payment & Submitting Orders** .....

NOFA receives **100%** of all check payments and **97%** of all credit card payments. Money Orders accepted. Please expect a 2-week processing time. **Please consider paying by check** even when ordering online!

**Order by Mail** .....

Fill out your order form neatly, including item #s, and don't forget to designate your pickup site! Mail order form with payment. **Orders must be post-marked by January 31.** No late orders will be accepted.

Orders & Payment:  
**NOFA/Mass**  
**ATTN: Bulk Order**  
**PO Box 60043**  
**Florence, MA 01062**

**Volunteering** .....

As always, the Site Coordinators can use help unloading the truck, organizing, and breaking down orders. Many of our farms are busy preparing for the season, so all of your help is greatly appreciated. Supplier orders will be delivered on Tuesdays **3/9** and **4/13 (tubers and onions)**, weather conditions permitting. To lend a hand, check "I can volunteer" on your order form, and your site coordinator will then be in touch about volunteer shifts. **This year, due to Covid, we will be limiting numbers and spacing out volunteers according to how many people can work in an outdoor space with plenty of physical distancing.** Volunteering is a great way to meet other NOFA members and to participate in a wonderful communal tradition. This is another reason why we are able to save money - everyone chips in a little work.

**2021 Bulk Order Pickup Locations and Hours** .....

**Belchertown, MA:** NESFI, 275 Jackson St, Belchertown, MA  
Coordinator: Cathleen O’Keefe, 413-387-2316, vertsdream@gmail.com  
Pick up information: Pick up 9-5pm starting Wed March 10- Sunday March 13; 9-5pm starting Wed April 14 - Sunday April 18

**Barre, MA:** Many Hands Organic Farm, 411 Sheldon Rd, Barre, MA  
Coordinator: Julie Rawson, 978-257-1192, julie@mhof.net  
Pick up information: Come and meet the truck on delivery days (Tuesdays and any other days that deliveries are expected). Then come anytime and self serve until the end of Sunday.

**Charlestown, RI:** Earth Care Farm, 89 Country Drive, Charlestown, RI  
Coordinator: Jayne Senecal & Nikki LaMonica, 401-364-9930, jayne@earthcarefarm.com or info@earthcarefarm.com  
Pick up information: Pick up between 8-12pm on Saturdays is preferred. To make alternate pickup arrangements, please call during business hours (8-am-4pm Monday-Friday).

**Dalton, MA:** Holiday Brook Farm, 100 Holiday Cottage Rd, Dalton, MA  
Coordinator: Caro Roszell, 508-360-0874, caro@nofamass.org  
Pick up information: Pick up Tuesday (3/9 and 4/6 volunteer pick up) afternoons; exact hours TBD based on delivery schedule. Saturdays (3/13 and 4/10) 1-4:30pm.

**Meriden, CT:** High Hill Orchard, 86 Fleming Rd, Meriden, CT  
Coordinator: Deb Legge, 203-676-0742, debct55@gmail.com  
Pick up information: Pick up Saturday (3/13) 8am – 12pm and Saturday (4/17) 8am – 10am

**Seekonk, MA:** Early Dawn Farm, 521 Prospect St, Seekonk, MA  
Coordinator: Matt & Tammy Goudreau, 508-642-2453, chickenfarm521@hotmail.com  
Pick up information: Pick up Saturday (3/13) 7am – 3pm and Saturday (4/17) 7am – 3pm

**Natick/Sherborn, MA:** Natick Community Organic Farm, 117 Eliot St, Natick MA (March only)  
Hopestill Farm, 117 Mill St Sherborn (April only)  
Coordinator: Richard Robinson, (508) 653-5421, rrobinson@nasw.org  
Pick up information: Pick up Saturday (3/13) 9am – 1pm and Saturday (4/17) 9am – 1pm

**Springfield, MA:** Gardening the Community, 200 Walnut St. Springfield, MA 01105  
Coordinators: Anna Gilbert-Muhammad, (413) 214-1237, anna@nofamass.org;  
Andrew Laurion, (413) 222-7496, andrew@nofamass.org  
Pick up information: Pick up Saturday 3/13 9am – 3pm and Saturday 4/17 9am – 3pm

**West Wareham, MA:** Progressive Grower, 81 Charlotte Furnace Rd, West Wareham, MA  
Coordinator: Steven Rittenhouse, 774-320-0255, stevensfarmstand@gmail.com  
Pick up information: Pick up Saturday 3/13 9am-11am and Saturday 4/17 9am-11am

.....

**PICKUP DATE is Saturday March 13** for all items except tubers and onions. Remember, pick up times and dates do vary among sites.

**If you need your compost and potting soil before the Pickup Date, you may be able to arrange that. Please contact the Bulk Order Team to make arrangements.** About a week before pickup, we’ll e-mail you a reminder including to any special instructions for your site. Please bring a copy of your order form to pick up and check all items before leaving. Any problems should be reported to your Site Manager. **You must pick up your order on the pickup date unless prior arrangements have been made with your Site Coordinator.**

.....

**Volume Discount:** If your order totals over \$500 (before taxes and membership), you may deduct 2%; over \$1,000 deduct 3%; over \$2,500 deduct 4%. If you qualify for the discount and must pay Mass. Sales Tax, figure the tax after calculating the discounted total.

**Taxes:** Only Massachusetts residents must pay a 6.25% sales tax on all items with code 300-360. You can claim exempt status if your business is not-for-profit (include copies of forms ST-5 and ST-2) or if you are a commercial farm (include a copy of Form ST-12, downloadable from [www.mass.gov/dor](http://www.mass.gov/dor)). Sales tax will be charged unless exempt status documentation accompanies the order form.

**Pallet Deliveries:** We can offer full- pallet pricing for most of the minerals and fertilizers listed; prices for bulk loads of compost & potting soils are already listed. For pallet pricing, you must coordinate with the Bulk Order Team ([bulkorder@nofamass.org](mailto:bulkorder@nofamass.org)) for your drop delivery at a pre-designated site. Delivery sites must be accessible by an 18-wheel truck. Please contact us to determine pallet pricing and drop shipping rates. You are responsible for offloading pallets. If you require a hand offloading/lift gate, an additional lift gate fee (\$65) will apply.

**Certified organic growers** who buy products through this order are still responsible for their own documentation. In the case of non-organically grown cover crop seed, onion sets, and shallots, you must demonstrate organic sources were unavailable. Contact Baystate Organic Certifiers ([baystateorganic@earthlink.net](mailto:baystateorganic@earthlink.net), 774-872-5544) with any questions.

**Refunds:** If any product problems arise, contact the Bulk Order Coordinator immediately. All refunds will be issued after the Pickup Day. No refunds will be issued after May 1. Refund amounts under \$5 will be donated to NOFA/ Mass, unless requested otherwise by phone or email.

.....

**Questions?**

Please contact the Bulk Order Team at [bulkorder@nofamass.org](mailto:bulkorder@nofamass.org)

---

# Potting Soil & Compost

Contact Bulk Order Team for all sling (1 cubic yard bag) orders. Driveway access for large shipping trucks required for sling orders.

---

**Earth Care Farm Compost:** Made on a family farm in Charlestown RI since 1977. Composted fish and shellfish by-products, seaweed, food scraps, yard waste.  
**001 ECF, 15 qt. \$12 / 1-yard Sling \$150 + shipping**

**Vermont Compost Plus:** A high nutrient blend of compost and mineral amendments for boosting transplants and rejuvenating soil mix. Blended from composted manure and plant materials, blonde horticultural grade sphagnum peat moss, crushed and screened granite and basalt, blood meal, kelp meal, steamed bone meal, mined gypsum, vermiculite, washed coconut coir, and biodynamic preparations.  
**002 VCC, 20 qt. \$17 / 60 qt. \$43 / Sling \$614 + shipping**

**Earth Care Farm Raised Bed Mix:** 80% EFC screened compost plus peat moss and small amounts of green-sand, rock phosphate, colloidal phosphate, oyster meal, kelp meal, langbenite, protein meal, dried whey, humates and nitrate of soda.  
**003 ECF, 15 qt. \$13 / Sling \$209 + shipping**

**Earth Care Farm Potting Soil:** Compost plus peat moss, perlite, vermiculite, kelp meal, protein meal, bone meal, sulfate of potash/magnesia, and phosphate rock.  
**301 ECF, 15 qt. \$14 / Sling \$231 + shipping**

**Vermont Compost's Fort Vee Potting Soil:** For containers, soil blocks, and trays. Mature compost, sphagnum, crushed granite and basalt blend, blood, kelp and bone meals, gypsum, vermiculite, coconut coir and biodynamic preparations.  
**302 VCC, 20 qt. \$16 / 60 qt. \$39 / Sling \$521 + shipping**

**Vermont Compost's Fort Light Potting Soil:** For growers using smaller-celled flats, this is the Fort Vee formula with added perlite and without crushed rock.  
**303 VCC, 20 qt. \$16 / 60 qt. \$39 / Sling \$521 + shipping**

**Vermont Compost's Perennial Blend:** Formulated for organic growing in large pot, container and bed culture where a coarse texture is preferred. Particularly suited for woody plants, shrubs, herbs, perennials, and the mulching of vegetable and flower beds. Recommended if you need a complete soil to fill a raised bed. Blended from composted manure and plant materials, composted maple and yellow birch bark, crushed and screened granite and basalt, blood meal, kelp meal, steamed bone meal, mined gypsum, vermiculite, washed coconut coir, and biodynamic preparations.  
**306 VCC, 20 qt. \$13 / Sling \$506 + shipping**

**Ideal Potting Soil:** Composted manure, stable litter, sphagnum peat, vermiculite, ground limestone and natural soil amendments. Contains sufficient nutrients to carry bedding plants through to transplanting.  
**304 ICC, 60 qt. \$38**

**Ideal Compost Fungal Jumpstart Seed Starter Mix:** A finely screened version of potting soil plus vermiculite and mycorrhizal fungi to give seedlings an early boost. Best for salt-sensitive seedlings, covering seed, and use in small diameter plug trays.  
**305 ICC, 40 qt. \$38**

**Earth Care Farm Kind Earth Super Soil:** For indoor, medicinal quality plants, just add water. Earth Care Farm screened compost plus peat moss, perlite, vermiculite, seabird guano, worm castings, vegetable protein meal (from kelp and other vegetable sources), animal protein meal (fish, crab and other animal sources), bone meal, bone char, sulfate of potash (natural), langbeinite, and phosphate rock.  
**307 ECF, 15 qt. \$22 / Sling \$457 + shipping**

**Rice Hulls:** Used in potting soil for moisture retention. Also makes a nice light-colored mulch.  
**004 OGS, 65# \$26**

**Buckwheat Hulls:** Agricultural by-product used in potting mix to reduce need for sphagnum, vermiculite and perlite. Also makes an attractive dark mulch. 2 cu. ft.  
**005 OGS, 25# \$8**

**Coir blocks:** Compressed coconut fibers that swell to 8-9 x their initial size when wet. Coir is easy to store, and a more renewable and ecologically friendly resource than peat, with same moisture retention/aeration properties. Useful if you make your own potting mix on site. One block expands to approximately 2½ cubic feet once hydrated.  
**006 OGS, 1 block \$13**

**Worm Castings:** Provides a rich mixture of micro-nutrients, microbes and organic matter. It has an almost equal percentage of N, P and K. Ca and Mg are present as well. Use as top dress, add to potting mix and raised beds.  
**007 OGS, 8 qt. \$15 / 30# \$34/2 cu. yard tote \$975 + shipping**

**Sungro Sunshine #1 N&O (Natural & Organic):** Suggested by NOFA/Mass Policy Director Marty! This all purpose lightweight versatile mix is perfect for cuttings and container production. Contains Canadian Sphagnum Peat Moss, Coarse Perlite, Dolomitic Limestone, Organic Wetting Agent and RESILIENCE® - Sungro's trade name for Silicon (Si), a beneficial plant substance.  
**112 PGS, 2.8 cu ft \$22** NEW

---

## Inoculants

---

**BioCoat Gold:** From AEA. An endomycorrhizal fungal inoculant blend mixed with ultra-fine calcium, humates and diverse seaweed species. This seed treatment that speeds germination, increases seedling vigor, and builds robust root systems. Use on cover crops, grain crops, and vegetables. 2-4 ounces per 100 pounds of seed.

**008 PGS, 1# \$60 / 5# \$260**

**Myco Seed Treatment:** A blend of microorganisms and mycorrhizal fungi to provide protection and growth enhancement for potatoes, legumes, grain, grass and vegetables. 1-2 oz/100# of potato seed, 4-8 oz/100# smaller seed.

**010 OGS, 1oz, \$7 / 1# \$67**

**EM-1 Microbial Inoculant:** A liquid combination of yeasts, actinomycetes and two kinds of bacteria, photosynthetic and lactic, which promote soil fertility, plant health and nutrient absorption. Apply at 1 oz/ gallon of water.

**011 OGS, 1 qt, \$37**

**OGS MycoApply All Purpose Granular:**

Endomycorrhizal fungi (4 species), ectomycorrhizal fungi (7 species), and beneficial bacteria (5 species) mixed in a slow-release 5-3-2 organic fertilizer. 1#/sq. ft.

**012 OGS, 1# \$24 / 30# \$537**

**Alfalfa Inoculant:** For alfalfa, sweet clover and all the *Trifolium* clovers listed. Treats 50# of seed.

**013 OGS, \$7**

**Peas & Vetch Inoculant:** Rhizobium (N-fixing root node) inoculation for garden peas, field peas, fava, lentils, and vetch. Treats 50# of seed.

**014 OGS, \$5**

**Spectrum:** From AEA. Contains a multiple-species blend of plant growth-promoting rhizobacteria and other beneficial plant growth promoting microorganisms. This specially formulated soil inoculant enhances and restores beneficial soil microbe populations, which help to make minerals available to plants and build humus. Apply 50 grams/ acre.

**073 PGS, 1 acre, \$25**

---

## Cover Crops

---

**N** indicates **non-organic seed**: organic certification requires proof that an organic source was not available.

---

### Mixes . . . . .

**NOFA Cover Crop Cocktail OG:** With annuals and biennials, grasses and legumes and broadleaves, and roots of all shapes and sizes, this blend mimics natural diversity and encourages a flourishing and balanced microbial population. Best for long rotations: plant in August or September and allow to grow to midsummer of next season. Contains field peas, winter rye, winter wheat, barley, oats, medium red clover, tillage radish, and hairy vetch. Seed at 50-75#/acre or 1-2#/1000 sq ft.

**108 OGS, 2# \$11/50# 140**

**PVO Soil-Building Mix OG:** Maine trials have shown peas-vetch-oats to capable of producing as much as 8000# biomass/acre at maturity. 71% field peas, 15% oats and 14% hairy vetch. Seed at 200#/acre, 5#/1000 sq. ft.

**018 OGS, 2# \$7 / 10# \$27 / 50# \$109**

**Vetch/Winter Rye Mix OG:** Produces abundant green manure, adds nitrogen to the soil, and suppresses weed growth. Excellent for a field that won't be planted the following Spring. Sow at 90#/acre, 2#/1,000 sq. ft.

**019 OGS, 2# \$8 / 10# \$32 / 45# \$108**

**Pasture Mix OG:** Perennial pasture mix. Provides season-long regrowth and good grazing. 30% perennial ryegrass, 35% endophyte-free tall fescue, 15% orchard grass, 10% timothy, 10% Rivendell white clover (preinoculated). Plant at 40-50#/acre, 2#/1000 sq ft.

**109 OGS, 2# \$24 / 10# \$110 / 50# \$325** **NEW**



## Grasses

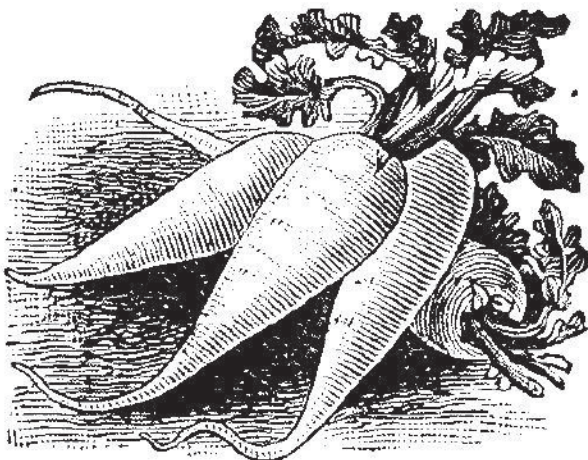
*Our suppliers have informed us that Certified Organic grasses are in short supply this year, so we're carrying only a limited supply of the most popular organic cover crop grasses this year, plus the beloved Wapsie Valley Corn. For other varieties of cover crop grasses, we recommend ordering direct from Fedco or other suppliers as soon as possible.*

**Annual Ryegrass OG:** Widely adaptable to a variety of soils, will establish quickly in cool wet weather. Provides dense cover and, when sowed thinly, makes an excellent nurse crop. Seed at 15-50# / acre, 1/2-2#/1000 sq. ft.  
**124 PGS, 2# \$10 / 10# \$47 / 25# \$67 / 50# \$155**

**Wapsie Valley Corn OG:** Open-pollinated heirloom two-color dent corn; 85 days to maturity. Starchy dent, 25% more protein than hybrid corn. Makes a nice feed corn and can also be grown and dried for corn flour. Can be used in winter-kill cover mixes; produces huge stalks but is not highly competitive. Plant as soon as the soil warms to 60°F. Indigenous groups in Maine receive a royalty on sales of this corn.  
**125 OGS, 2# 15/ 10# \$60 / 50# \$220**

**Winter Rye OG:** New England's most popular winter cover. Fast growing and very cold tolerant. Sow late Aug. through mid Oct. Crimp / mow at milk state, or plow at least 3 weeks before planting if possible. 3-4# / 1,000 sq ft, 60-200# / acre.  
**126 PGS, 5# \$6/ 25# \$22 / 50# \$41**

**Oats, Jerry-type VNS OG:** Standard cover crop variety. Oats tolerate acidic soil better than any other grain. As a cover, seed at 100-200#/acre Aug- September for a frost-tolerant cover that builds organic matter but winterkills in most regions of New England. For grain, sow early at 120-160#/acre, 3-4#/1000 sq ft.  
**127 PGS, 5# \$6 / 25# \$22 / 48# \$42**



## Legumes . . . . .

**Crimson Clover Untreated N:** Annual; excellent orchard cover and green manure. Shade tolerant, fast germinating to suppress weeds. 1/2-2#/1000 sq ft, 9-40#/acre. Not organically grown.  
**030 OGS, 0.5# \$4 / 2# \$8 10# \$31 / 50# \$121**

**Alice White Clover N:** More vigorous and taller than Dutch White Clover, this perennial large-leafed clover establishes quickly and withstands traffic, self-seeds. Frost seed 4-5#/acre, 1/4# per 1000 sq. ft. Not organically grown.  
**031 OGS, 0.5# \$9 / 2# \$27**

**Mammoth Red Clover OG:** Best planted in early spring with a nurse crop of oats. Excellent hay crop alone or with grasses. Seed at 7-18# /acre alone or 5-8#/acre when mixed with grasses, 1/2# /1000 sq. ft.  
**032 PGS, 2# \$14 / 10# \$53 / 50# \$229**

**Medium Red Clover OG:** Short-lived perennial legume suitable for pastures, grazing, underseeding and cover-cropping. The easiest legume to establish in undisturbed grass sod. Vigorous and high-yielding. More drought-tolerant than white clover. Seed coated with Surestand Hydrogreen, an OMRI-Listed® coating. Up to 24".  
**110 OGS, 2# \$14 / 10# \$53/ 50# \$229** NEW

**Rivendell White Clover OG:** Perennial small leafed legume, establishes quickly and withstands traffic and mowing. More vigorous and slightly taller (9") than Dutch white clover. Seed in early spring at 5-10# / acre, 1/4# per 1000 sq. ft.  
**033 OGS, 0.5# \$12 / 2# \$40 / 10# \$151**

**Dutch White Clover N:** Perennial, low growing clover (6" tall). Provides a living mulch, especially useful in paths. Best planting times are April, May & August. 1/4#/1,000 sq. ft, 6-14#/acre. Not organically grown.  
**034 OGS, 0.5# \$8 / 2# \$20 / 10# \$92 / 50# \$327**

**Yellow Sweet Clover OG:** Deep taproot breaks up subsoil, improves soil aeration. Biennial; nice bee forage when flowering. Thick, succulent stalks are a good green manure. 1#/1000 sq. ft, 9-20#/acre.  
**035 PGS, 5# \$10 / 10# \$38 / 50# \$165**

**Alfalfa, Hardy OG:** Builds organic matter and nitrogen in fields that will be taken out of cash crops for more than one year. Regular mowing helps deter quack-grass and annual weeds. 25#/ acre, 15#/acre in mixes, 0.5# / 1000 sq. ft.  
**036 OGS, 0.5# \$8 / 2# \$27/ 10# \$96**

**Field Pea OG:** Frost-tolerant annual legume. Likes cool moist growing conditions. Will grow in most soil types but prefers well- drained loams. As cover, seed at 100-200# / acre, 4# /1000 sq ft. For forage, seed early in the season at 200# / acre alone or 100# /acre (4#/1000 sq. ft.) with 50#/acre (3#/1000 sq. ft.) oats or barley.  
**037 PGS, 5# \$7 / 25# \$31 / 50# \$60**

**Hairy Vetch OG:** Excellent nitrogen fixation—over 100 #/ acre. Best planted with rye, as the rye supports vetch vines in the spring and holds the soil over the winter better than the tap-rooted vetch. Tolerates acidic soils and low fertility, but not poor drainage. Seed at 20-40#/ acre, 1#/1000 sq. ft.  
**038 OGS/PGS, 2# \$15 /10# \$54 / 50# \$225**

**Sunn Hemp <sup>N</sup>:** Fast growing tropical legume with robust biomass and nitrogen fixation capacity. Reliably winter kills and is not seed-bearing in the Northeast. Not organically grown.  
**039 OGS, 0.5# \$5 / 2# \$12 / 10# \$48 / 50# \$159**

**Miscellaneous** . . . . .

**Buckwheat OG:** Summer annual, easy to turn under, makes phosphorous available for the next crop. Sow after danger of frost, 2-3 #/1000 sq. ft., 35-134# /acre.  
**040 PGS/OGS, 2# \$8 / 5# \$10 / 10# \$23 / 25# \$43 / 50# \$75**

**Alfalfa Meal OG:** Plant-based N source, from organically grown alfalfa. For a noticeable quick boost to plant growth, use 800# / acre, 2-3# / 100 sq. ft.  
**042 OGS, 5# \$8 / 50# \$37**

**Fish Meal (8-12-2):** A by-product of catfish farming in Mississippi, stabilized with hydrogen peroxide. Odor neutralizes once incorporated. Excellent source of N and P. Side-dress or mix into compost.  
**043 PG/OGS, 5# \$12 / 50# \$112**

**Fertrell Blood Meal 12-0-0:** Fastest release rate of organic N sources. Byproduct of commercial meat industry. Till 3-5# / 100 sq. ft. or side dress at 1/4# / 100 ft. 3 weeks after transplant.  
**044 PG, 5# \$11 / 50# \$93**

**Soybean Meal 7-0.5-2.3:** High levels of N and K released slowly as meal breaks down. Incorporate at planting time.  
**045 OGS, 5# \$9 / 50# \$51**

**Fertrell Blue N 5-1-1 (No Chilean Nitrate):** Peanut, blood, feather and crab meals plus zeolite, bone char, aragonite and sulfur. Time-released N, specially formulated for crops that require more nitrogen when soil organic matter is low. Great for spring crops. 5#/ 100 row ft. or 200# / acre.  
**046 PG, 50# \$33**

**Kreher's 5-4-3 Sunrise:** Also contains 8% Ca. Organically-sourced version of the popular and economical slow-release N amendment. Made from composted chicken manure sourced from organic poultry.  
**047 PG, 50# \$23**

**Fertrell Feather Meal:** 13% N. By-product of commercial poultry.  
**048 PG, 50# \$55**

**Fertrell Berry Mix 4-2-4 <sup>R</sup>:** Formulated for bigger and tastier berries. Apply at the end of the season or as the plant comes out of dormancy in the spring  
**049 PG, 50# \$32**

**Pro Start 2-3-3:** Boosts size and quantity of root crops and tubers. Also a lawn winterizer. Pro Gro formula plus langbeinite. 15-30#/1,000 sq. ft.  
**050 NCO, 50# \$20**

**Pro-Booster 10-0-0 (No Chilean Nitrate):** A fast acting fertilizer with one third of its nitrogen immediately available (water-soluble). A combination of vegetable protein meals (such as alfalfa meal, cocoa meal, cotton seed meal, kelp meal, peanut meal, and soybean meal), animal protein meals (such as blood meal, crab meal, dried whey, feather meal, and fish meal). Can be side or topdressed wherever extra nitrogen is needed.  
**107 NCO, 50# \$40 <sup>NEW</sup>**

---

## Fertilizers & Amendments

<sup>R</sup> indicates **Restricted**; must document trace mineral deficiency associated with amendment. Check with your certification agent for more information.

<sup>+</sup> Indicates product contains **Sodium Nitrate**.


---

**Nitrogen** . . . . .


**Nature Safe 13-0-0 Blending Base Fertilizer:** A high nitrogen product derived from feather meal, meat meal, and blood meal. Nitrogen will slow release over 8 to 10 weeks, which provides your crops with nutrients needed to thrive. Can be blended with other fertilizer ingredients or be used as a stand alone fertility product in areas where phosphorus and potassium are not needed. Stimulates soil microbial populations and allows for efficient nutrient uptake to plants. Picked for this year's catalog by NOFA/Mass Board Member Laura Davis.  
**113 PGS, 50# \$41 <sup>NEW</sup>**



**Pro Gro 5-3-4:** For rapid and sustained plant growth. Contains greensand, rock phosphate, alfalfa meal, sulfate of potash, vegetable/animal protein meal. 20-25#/1,000 sq. ft. No Chilean Nitrate. **Contact Bulk Order Coordinator to order this product with Chilean nitrate.**  
**051 NCO, 50# \$27**

**Pro Hemp 5-3-9** : A blend of natural mineral and organic ingredients that best suits its nutritional needs of hemp plants. Use 1,000-lbs Pro-Hemp/acre, lightly incorporated into the soil's surface. For transplanting applications, thoroughly mix ¼ cup in each planting hole with surrounding soil.  
**091 NCO, 50# \$33**

**Pro Holly 4-6-4:** A natural fertilizer blended from mineral and organic ingredients. Specifically made for acid loving plants. No Chilean Nitrate. **Contact Bulk Order Coordinator to order this product with Chilean nitrate.**  
**092 NCO, 50# \$27**

**Neptune's Harvest Crab Shell Flour:** An excellent dry organic source of NPK, Calcium (23%) and Magnesium (1.33%). Will also help to create soil conditions that are naturally growth-suppressing for grubs, fungal organisms and other insects. Additionally, the high level of calcium in Crab Shell Flour helps to raise the pH of acidic soils, making it a great organic substitute for mined lime products.  
**114 PGS, 44# \$60** 

## Calcium . . . . .

**Hi-Cal Lime:** Relatively available calcium amendment. Raises pH without the heavy magnesium of dolomitic lime; loosens clays, and binds particles in sandy soil. Pelletized.  
**052 PGS, 5# \$3, 50# \$10**

**Dolomitic Lime:** Carbonate of calcium and magnesium. Use only when Mg levels are low, or when excess Mg is not a problem. Amount of lime needed to raise pH is dependent on soil type and initial pH; check a good gardening resource site or book for application rates.  
**053 PGS, 5# \$1.75 / 50# \$6**

**Aragonite 0-0-0-37:** A very low-magnesium source of sea calcium and trace minerals. A few years' use helps bring soil back into balance. Good source of Ca for feed supplement.  
**054 OGS/ PG, 5# \$7 / 50# \$17**

**Gypsum, Pelletized (0-0-0-24-17):** Calcium Sulfate.  
**056 OGS /NCO, 5# \$7 / 50# \$23**

## Potassium, Phosphorus & Sulfur . . . . .

**Fertrell Super K 3-4-7:** Blended to meet the demands of higher phosphorus and potassium requirements by certain crops. Blended with crab meal for nematode control.  
**057 PGS, 50# \$29**

**Sul-Po-Mag 0-0-22-11-20:** Crushed langbeinite, a marine deposit of potassium sulfate and magnesium sulfate in soluble form for available K and Mg when Ca is abundant. Alliums like its sulfur and potatoes like its quick boost of potassium ½-1#/100 sq. ft, 200-500#/acre.  
**059 PGS, 50# \$39**

**Sulfate of Potash/Potassium Sulfate:** A naturally-occurring potassium salt containing 50-52% potash and 17% sulfur.  
**060 PGS, 5# \$7 / 50# \$39**

**Granite Meal:** (0-0-5) For potassium. Can be used in large amounts without affecting pH (unlike K-Mag and wood ash) 50-100#/1,000 sq. ft, 2-4,000#/acre.  
**061 OGS, 5# \$6 / 50# \$28**

**Greensand:** (0-1-7) 3% Mg, 20% Fe. Organic slow release K source that contains marine potash, silica, iron oxide, magnesia, lime, phosphoric acid, and 30 trace minerals. 2-5#/100 sq. ft., 500-2,000#/acre.  
**062 NCO/PGS, 10# \$11/ 50# \$35**

**Bone Char:** (0-16-0) Burned bone meal used for water purification and refining sugar. Significantly less needed per acre to supply the same amount of available P than phosphate rock. Consistency like table salt; density is ~80 pounds per cubic ft.  
**063 OGS/NCO, 5# \$8 / 50# \$35**

**Phosphate, Tennessee Brown:** (0-3-0) Neither colloidal nor rock phosphate, but the consistency of rich soil. Comes from the washing piles left behind when high-grade ore was extracted to produce superphosphate in the early 20th century. Concentrations of available phosphate test regularly over 6%. Apply 300-500#/acre, any season.  
**064 OGS, 5# \$7 / 50# \$22**

**Phosphate Rock:** Crushed apatite rock. Moderately available source of P, Ca and trace elements. 30% total phosphate (3-8 % available) and 48 % calcium (CaO) with 1/5 the neutralizing power of lime. Applications can last 5 years or longer, depending on soil conditions. Used in landscape and nursery applications to help plants adjust to transplant stress because it does not burn roots. 1-2# per plant for tree or shrub transplants, 500 to 4000# per acre depending on soil P and Ca deficiencies. Granular texture.  
**065 NCO, 50# \$23**

**Tiger 90 CR Organic Sulfur:** Improved handling, high quality degradability and performance, soil amendment for alkaline soils, reduces soil pH.  
**104 PGS/OGS, 5# \$7.25 / 50# \$34**

## Magnesium & Trace Materials . . . . .

**20 Mule Team Borax Solubor® DF** <sup>®</sup>: Soluble borate for fluid fertilizers and nutrient sprays. Boron is essential for all stages of tree growth and fruit set. Alfalfa, clover, brassicas, carrots, celery, corn, lettuce, onions, beets, tomatoes, and tree fruits are particularly sensitive to boron deficiency. Dry flowable powder, mixes easily in any spray solution. Picked for this year's catalog by NOFA/Mass Board Member Laura Davis.

**115 PGS, 5# \$35/ 50# \$225** NEW

**Kelp Meal:** Dried and ground seaweed containing trace minerals, enzymes and amino acids. Brassicas respond well to this excellent source of naturally chelated elements. Mix into the soil at the rate of 1#/100 sq. ft or 300-600#/acre. Added to animal feed, it improves production and enriches manure. (1-2% of ration).

**066 OGS/PGS, 5# \$13 / 50# \$67**

**Hole-istic Spring Planting Mix:** Blend of amendments in a humus-rich base of worm castings. Also contains rock phosphate, alfalfa meal, azomite, sul-po-mag, and Epsom salts. Add 3#/tree hole when planting.

**067 OGS, 3# \$7 / 30# \$45**

**Azomite:** (0-0-2.5) 5% Ca. Soil amendment/feed additive. Over 67 beneficial minerals and trace elements. Spread 1-2#/100 sq. ft., 300-600#/acre. Use in feed at 1-2% of mixture. Powder can be used as a foliar feed or liquid fertilizer.

**068 OGS/NCO, 4# granular \$8 / 44# granular \$36 / 44# powder \$30**

**BrixBlend Basalt:** Paramagnetic stone powder from the Pioneer Valley of Massachusetts. Contains 49.3% SiO<sub>2</sub>, 13.3% Al<sub>2</sub>O<sub>3</sub>, 9.2% CaO, 5.7% magnesium oxide MgO, and other trace minerals. Till in 1-10 tons/acre, 5-50#/100 sq. ft or broadcast at 1-5 tons/acre, 5-25#/100 sq. ft. For compost, add 20-25#/cubic yard of raw material.

**069 OGS, 5# \$7 / 50# \$35**

**Fertrell Redmond Salt:** 93% sodium chloride, 7% trace minerals. Naturally mined in Utah. Minerals accumulated as an ancient inland sea evaporated; provides a valuable supplement for crop and livestock growth. Animals love it.

**070 PGS, Fine 50# \$17**

**Epsom Salt/Magnesium Sulfate** <sup>®</sup>: For addressing specific magnesium deficiency.

**071 PGS, 50# \$27**

**Manganese Sulfate** <sup>®</sup>: Non-soluble. For addressing specific manganese deficiency.

**072 PGS, 5# \$6 / 50# \$47**

## Soil Conditioners . . . . .

**Lime:** See variety of options, page 5

**Raw Biochar:** Biochar helps your soil sequester more carbon and emit less nitrous oxide. It provides a dream home for beneficial bacteria and fungi and prevents essential plant nutrients from leaching out of the root zone. This product is 100% pure horticultural grade raw char, with 70- 85% fixed carbon. Apply raw char at up to 20#/1000 sq. ft. or 700#/acre on ground you are resting or pre-mix with compost before application. Do not apply product as-is to ground that is currently in production! **Contact the Bulk Coordinator for pallet size pricing and deliveries.**

**074 OGS, 5# \$12 / 25# \$42** NEW

**Fertrell Menefee Humates:** Contains 65% humic acid in a carbon matrix to make minerals and nutrients more easily available to soil microorganisms and plants. Agricultural trials have shown marked crop improvement when applied. Use 6-10#/1000 sq. ft. or 250-400#/acre/year in several applications and mix into the soil surface for best results.

**075 PGS, 50# \$30**

**Zeolites:** Aluminosilicate lattices that hold up to 55% of their weight in water. Negatively charged, the lattices hold the cations of essential elements. Zeolites can be added to sandy soil to improve water and mineral retention. In gardens add 15-20#/100 sq ft to the top 6" before planting; 1-2-1/2 tons per acre. Added to compost, zeolites retain ammonia ions and prevent their transformation to ammonia gases, keeping the nitrogen from escaping. Helps reduce odors in animal litter.

**076 OGS, 25# \$30**

## Liquid Amendments . . . . .

**HoloCal** <sup>®</sup>: From AEA. A non-synthetic blend of a uniquely processed, natural source of calcium valuable to many crops for improving plant vigor, fruit quality and storability. Can prevent many common fruit quality problems by building strong cell walls and enabling complementary nutrient flow to increase plant resistance to abiotic stresses. Picked for this year's catalog by NOFA/Mass Board Member Laura Davis.

**116 PGS, 1 gal \$37/ 5 gal \$225** NEW

**HoloK** <sup>®</sup>: From AEA. A natural non-synthetic blend of uniquely processed potassium, valuable to many crops for improving fruit quality and storability. Can be used as a row starter, transplant solution, in irrigation systems, or as a foliar spray. Picked for this year's catalog by NOFA/Mass Board Member Laura Davis.

**117 PGS, 1 gal \$56/ 5 gal \$231** NEW

**Micropak<sup>®</sup>**: From AEA. A complex blend of micronutrients that enhance sugar translocation, root strength and overall plant vigor. Improves nutrient uptake, especially calcium, provides enzyme cofactors and building blocks that enable plants to build complete proteins and complex compounds, and encourages larger, stronger roots and better plant vigor. Picked for this year's catalog by NOFA/Mass Board Member Laura Davis.

**118 PGS, 1 gal \$51/ 5 gal \$187** **NEW**

**Rebound Boron<sup>®</sup>**: From AEA. Made with a unique process that maximizes plant availability. Can be used to obtain a quick response when boron is needed in the plant. Foliar applications may be particularly beneficial during periods of peak nutrient demand for crops grown on soils having poor nutrient availability, or to crops suffering from a weakened root system. Picked for this year's catalog by NOFA/Mass Board Member Laura Davis.

**119 PGS, 1 gal \$24/ 5 gal \$106** **NEW**

**Rebound Manganese<sup>®</sup>**: From AEA. Made with a unique process that maximizes plant availability. Can be used to obtain a quick response when manganese is needed in the plant. Foliar applications may be particularly beneficial during periods of peak nutrient demand for crops grown on soils having poor nutrient availability, or to crops suffering from a weakened root system. Picked for this year's catalog by NOFA/Mass Board Member Laura Davis.

**120 PGS, 1 gal \$24/ 5 gal \$105** **NEW**

**Organic Molasses**: Soil biostimulant and source of trace minerals.

**077 OGS, 1 gal. \$15**

**Accelerate<sup>®</sup>**: From AEA. Comprised of bio-available manganese, multiple seaweeds, salmon, crab and shrimp shell, Accelerate provides ample cytokinins, gibberellins and manganese, with nominal amounts of N, K, Ca, P, and trace elements from oceanic organisms. Stimulates plant reproduction. Use a single foliar at a rate of 3-4 gals per acre 1-2 weeks before flowering or tuber-set commences. For fertigation, use 3-4 gal./acre in two applications within the two weeks before flowering. For continuously flowering crops, use a foliar of 2 gal/ acre 1-2 weeks before flowering commences and 1-4 qt. twice monthly until flowering completes. Same rates for drip fertilization.

**078 PGS, 1 gal. \$28 / 5 gal \$125**

**SeaShield**: From AEA. A cold processed liquid crab and shrimp concentrate. The silicon compounds and chitin polymers develop strong cell membranes for pest resistance.

**079 PGS, 1 gal \$25 / 5 gal \$102**

**OGS Fish Hydrolysate**: (2.9-3.5-0.3) Ground fish byproducts enzymatically digested and stabilized with phosphoric acid. If used as foliar feed, strain before adding to drip irrigation to avoid clogging the lines. Use 2-4 Tbsp./gal. of water.

**080 OGS, 1 pt \$6 / 1 gal \$22 / 5 gal \$98**

**OGS Fish Hydrolysate w/Kelp**: (2-5-0.2 gal. / 2-3-1 5 gal.) 90% fish hydrolysate with 10% kelp. Adds the micronutrients and growth hormones of kelp to the N-P-K of fish. 2-4 T/gallon of water covers 1,000 sq. ft.

**081 OGS, 1 pt \$6 / 1 gal \$22 / 5 gal \$98**

**Micro 5000 Organic 0-0-15**: From AEA. Scientifically formulated combination of beneficial microbes and plant nutrients derived from kelp. Soil fertility often cannot be amended in time to make effective corrections in one season, but plants are able to absorb nutrients through the surface cells and stomata, and foliar feeding is a fast and effective way to correct nutrient deficiencies. Used as a foliar, the microbial additions to the foliage increase their atmospheric N and P absorption rates, thus reducing supplemental nutrients needed. Apply at least 75 grams per application mixed in 10-20 gals/ acre. Use several times throughout the growing season.

**082 PGS, 1 acre \$55/ 5 acre \$135.00**

**SeaCrop**: From AEA. Derived from ocean water and produced using a special process that protects the enzymes and organic substances that occur naturally in oceans, while removing most of the sodium. SeaCrop is loaded with micronutrients that act as enzyme cofactors, thus making SeaCrop an outstanding microbial enhancer. For vegetables apply 1-2 pints/ acre per week in irrigation system or as a foliar. As a soil drench or transplant solution, use 2 gal./ acre in a 2% solution.

**083 PGS, 1 gal \$51 / 5 gal \$173**

**Fertrell Liquid Kelp Concentrate**: Not considered a fertilizer (the amounts of N,P&K are relatively low) but contains all the trace minerals; growth plant hormones, vitamins, enzymes and carbohydrates. It's a bio-stimulant, root system developer, and minor-nutrient deficiency cure. It can be used in conjunction with any water-soluble spray.

**084 PGS, 1 qt. \$25 / 1 gal. \$63**

**SeaStim**: From AEA. A liquid kelp extract developed from specific kelp sources not commonly used in crop production. Not manufactured with the usual chemical extraction methods, but rather with a mechanical, cold process which maintains the potency of its natural compounds. Incentivizes root growth and encourages a healthy cytokin to auxin ratio in the plant which equates to higher blossom set and less abortion of maturing fruit. Apply 1-2 qts per acre as a drip fertigation or as a foliar at 1 pt/acre/week.

**085 PGS, 1 gal \$39 / 5 gal \$158**

**HumaCarb:** From AEA. Soluble nutrient fertilizers are very unstable and can be leached out of the root zone or become complexed by soil minerals quickly, becoming unavailable to plants. This is especially the case for anions such as nitrogen, phosphorus and sulfur, as well as for trace minerals, which are easily complexed. Stable humic substances are well documented to stabilize nutrients in the root zone, and reduce potential fertilizer loss, as well as enhance soil microbiology. Tank mix with nutrient applications at a 3% solution.

**086 PGSm, 1 gal \$36 / 5 gal \$160**

**Diamond Grow Humic Acid:** 14% solution of naturally-occurring humic compounds. Liquid humate chelates nutrients for easier plant uptake, encourages root growth, and stimulates beneficial microorganisms.

**087 PGS, 1 gal \$27 / 2.5 gal \$60**

**Rejuvenate:** From AEA. Energy-packed food source for soil microbial communities. Contains complex carbohydrates, liquid humates and other powerful compounds that benefit soil biology and sustain growth over time. Supports soil to quickly break down crop residue and aggressively improve soil structure. Increasing soil microbial populations is a key factor in building disease suppressive soils. Spray on cover crops at 2 gal/ acre, on crop residues at 6 qts – 3 gals per acre increasing with heaviness of residue.

**088 PGS, 1 gal \$45 / 5 gal \$162**

**Fertrell Baicor Micro-Plenty 2-0-1 <sup>®</sup> <sup>+</sup>:** Essential trace elements in one handy bottle. 2% each Iron, Zinc & Manganese, 0.1% Boron and Calcium. Contains Chilean nitrate.

**089 PGS, 1 gal \$38**

**Agri-Dynamics Crop Manna <sup>®</sup>:** Organic Nitrogen Starter 3-3-4-2S. Crop Manna™ is a combination of two sources of nitrogen and kelp, stabilized with fulvic acids to produce an effective organic plant starter fertilizer. Helps jump start all crops and supports better crop production all season long. Crop Manna is rich in organic carbon sources to enhance the entire plant and soil biological systems.

**100 PGS, 2.5 gal \$73**

**Agri-Dynamics N-Dure:** Nitrogen Enhancer and Stabilizer. Contains humic acids, liquid fish, worm casting extract, and kelp. Intended to provide a stable foundation for all plant, soil microbe and earthworm nutrition. The humic substances stabilize soil nutrients while providing a buffering effect that can help growers reduce costly N applications by increasing N efficiency.

**101 PGS, 2.5 gal \$83 <sup>NEW</sup>**

**Agri-Dynamics Plant Sure <sup>®</sup>:** Covers all the bases from from plant production to plant protection. Contains ascorbic acid to zinc sulfate, from major nutrients, micronutrients, trace and ultra-trace elements. Incorporates diverse calcium, magnesium, and silicon minerals, biologicals, and humic substances.

**102 PGS, 2.5 gal \$105 <sup>NEW</sup>**

**Neptune's Harvest Fish Emulsion 2-4-1:** Neptune's Harvest Fish Hydrolysate is the perfect fertilizer for organic gardening. Unlike fish emulsions, Neptune's Harvest doesn't remove the proteins or oils during processing and has no unpleasant odor.

**105 PGS, 1 gal \$41/5 gal \$125**

**Neptune's Harvest Fish & Seaweed 2-3-1:** Neptune's Harvest Organic Fish/Seaweed Blend Fertilizer gives you the perfect blend of hydrolyzed fish and seaweed, ensuring a complete fertilization program.

**106 PGS, 1 gal \$41 /5 gal \$145**

---

## Livestock

---

**Fertrell Thorvin Kelp:** High iodine kelp blend (minimum 1000 ppm Iodine) for supplementing livestock feed.

**090 PGS, 50# \$70**

**Kelp Meal:** (see page 5)

**066 OGS/PGS, 5# \$13 / 50# \$67**

**Fertrell Redmond Salt:** (see page 6)

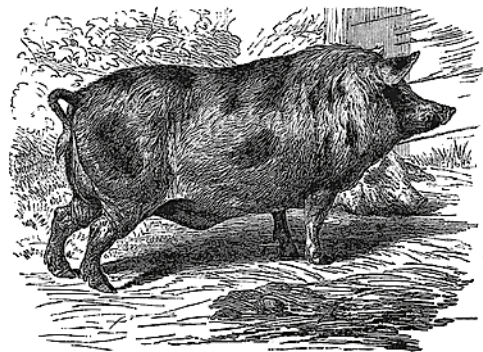
**070 PGS, Fine 50# \$17**

**Azomite:** (see page 6)

**068 OGS/NCO, 4# granular \$8 / 44# granular \$36 / 44# powder \$30**

**Fertrell Black Walnut Hull Powder <sup>®</sup>:** A dietary supplement used to correct digestive tract abnormalities caused by parasites, Coccidiosis, E-Coli form, and Salmonella type organisms. Typically given at the rate of 1/2 or 1 teaspoon per day depending on the size of animals and level of infections.

**093 PGS, 1# \$26**



**Fertrell Beef Balancer** <sup>®</sup>: Fortified heavily for the beef growers and finishers to provide nutritional support during times of stress. Specifically formulated to meet the nutritional requirements of a brood cow.

**121 PGS, 50# \$57** <sup>NEW</sup>

**Fertrell Dairy Nutribalancers** <sup>®</sup>: Fertrell's line of Dairy Nutri-Balancers includes three dairy premixes. Each is blended with precise ratios of calcium and phosphorous to balance rations with all types of forages.

Dairy #1 - For diets containing mostly legumes. Dairy #2 - For diets of mostly legumes with some corn silage. Dairy #3 - For diets of mostly corn silage with some legumes.

**098 PGS, 50# - #1 \$88 / #2 \$60 / #3 \$55**

**Fertrell Sheep Nutribalancer** <sup>®</sup>: A vitamin & mineral supplement. A nutritionally complete premix, with no added synthetic copper.

**094 PGS, 50# \$46**

**Fertrell Goat Nutribalancer** <sup>®</sup>: Formulated with the essential vitamins, minerals, and trace elements to promote optimum animal health. Should be used with high-quality grains and forages for maximum health and performance.

**095 PGS, 10# \$30/ 50# \$70**

**Fertrell Grazer's Choice** <sup>®</sup>: Supplies grazing livestock with the supplemental calcium, phosphorus, vitamins and selenium that they need. A ready-to-use mix of kelp meal, calcium, phosphorus, trace mineral salt from redmond minerals, vitamin E, selenium, and diatomaceous earth. Contains no added copper; is not harmful to sheep.

**122 PGS, 50# \$53.00** <sup>NEW</sup>

**Fertrell Horse Power**: A complete vitamin/mineral premix with probiotics and digestive enzymes to enhance digestion and help improve performance while promoting muscle development which promotes strength, stamina and muscle tone. Add to grains for a complete horse feed.

**123 PGS, 50# \$85.00** <sup>NEW</sup>

**Fertrell Poultry Nutribalancer** <sup>®</sup>: A complete vitamin and mineral supplement that can be used for all species of poultry (broilers, layers, turkeys, ducks, guineas, etc), ages and stages of production.

**096 PGS, 10# \$27 / 60# \$67**

**Fertrell Swine Grower** <sup>®</sup>: A vitamin/mineral premix to promote maximum performance and ensure optimum health. No Lysine.

**097 PGS, 60# \$45**

**Organic Raw Apple Cider Vinegar**: 60 grain. Designed for all livestock.

**099 PGS, 5 gal \$115/55 gal \$750.00**

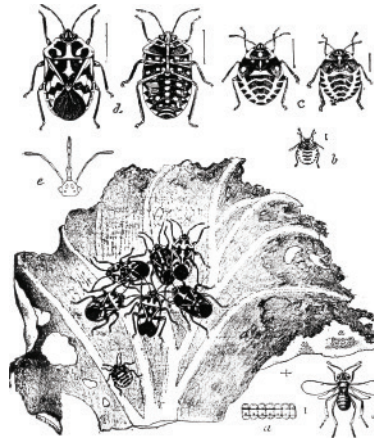
---

## Pest & Disease Control

---

<sup>®</sup> indicates **Restricted**; check with your certification agent for more information.

---



**Fertrell Diatomaceous Earth**: Fine powder to control soft-bodied insects. Natural grade is also fine as a 1-2% feed additive for livestock.  
**307 PGS, 50# \$29**

**Dipel** <sup>®</sup>: Commercial strength. Effective on tomato hornworms, cabbageworms and loopers, gypsy moths and more.

**308 PGS, 5# \$111**

**Monterey Garden Spray** <sup>®</sup>: Spinosad, 0.05% concentration. For home gardens. 1-2 oz per gallon water.

**309 OGS, Pint \$30 / Gallon \$110**

**Safer Brand Insect Killing Soap Concentrate** <sup>®</sup>: Biodegradable contact insecticide. No residual activity. Mix with alcohol to increase penetration. 2.5 oz per gallon of water.

**310 OGS, 1 pint \$16**

**Tanglefoot** <sup>®</sup>: Sticky substance made of castor oil, natural gum resins and vegetable waxes. Apply around tree trunks to prevent climbing insects from reaching foliage, buds and fruit. 15 oz. spreads a 2-3" band over 14'.

**311 OGS, 1# \$16**

**Stylect Oil**: Controls powdery mildew on grapes and all other ornamentals as well as insects such as aphids, whiteflies and mites.

**312 OGS, 1 gal \$48 / 2.5 gal. \$85**

**Sluggo** <sup>®</sup>: Blend of iron phosphate (natural soil mineral) and snail and slug bait. Damage reduction is almost immediate.

**313 OGS, 1# \$10 / 5# \$32**

**Fertrell Orange Guard** <sup>®</sup>: The active ingredient d-Limonene (orange peel extract) destroys the wax coating of the insect's respiratory system. When applied directly, the insect suffocates. The citrus fragrance of d-Limonene acts as a repellent.

**314 PGS, 32 oz \$14**

**Ahimsa Organics® Karanja Oil:** Valued by growers of veggies, fruits and medical marijuana for its pest- and disease-fighting properties. Rich in several bitter flavonoids that stimulate plant immune function. Prevents many pests from feeding and laying eggs and kills pests such as mites, aphids and leafminer larvae. Works synergistically with a number of pest management sprays—especially Neem Oil—to significantly improve their efficacy, and it lasts longer on plants than other botanical insecticides. It's also safer for bees, containing no azadirachtins. Remains a liquid at 40° or colder, making it easier to mix than neem. Very safe to handle and spray.

**111 OGS, 1 qt \$33/1 gal \$100** **NEW**

**Neem Oil:** Helps control most pests including aphids, cabbage worms, Japanese beetles, as well as diseases like black spot, powdery mildew, anthracnose, and rusts.

**315 OGS, 1 qt. \$33 / 1 gal. \$121**

**Entrust®:** Spinosad, 22% concentration. Labeled for leafminers, corn borers, leafrollers, cabbage loopers, armyworms, Colorado potato beetles, thrips, apple maggots, codling moths, lesser apple worms, oriental fruit moths and flea beetles. 4-8 oz. per acre. Toxic to bees, so avoid spraying on crops when they are flowering.

**316 OGS, 1 qt. \$651**

**PyGanic 1.4 EC®:** Pyrethrin formulation with a rapid, broad-spectrum kill rate. Botanical insecticide derived from a species of chrysanthemum. The pyrethrins break down quickly so the toxic effects are brief. May be used up to twelve hours before harvest. Effective for Colorado potato beetle, cucumber beetle, leafhopper, and flea beetle. Harms beneficial insects, so use wisely. Apply at 4.5-18 oz./ acre depending on pest pressure. 1.4% pyrethrins.

**317 PGS, 1 qt. \$105 / 1 gal. \$248**

**Surround®:** 95% Kaolin clay. For controlling E. apple sawfly, plum curculio, Japanese beetle, leafhopper, cucumber beetle, thrips. Protects by creating an irritating barrier. White surface also reflects sunlight, preventing sunburn and wilt. Suspend ½ #/gal. water, spray every 10-14 days, or as needed.

**318 PGS, 25# \$52**

**Serenade Home & Garden®:** Bacterial fungicide, *Bacillus subtilis*, effective on a range of bacterial and fungal diseases (early and late blight, powdery mildew, fire blight, and scab). Prevents disease by colonizing the leaf surface and outcompeting pathogens. Rate varies by disease, but is about 4 oz./ gal. water applied in 5-7-day intervals. Apply in a rotational program with other organic fungicides for best blight control. Orchards: Apply later than sulfur sprays.

**319 PGS, 32 oz. \$24**

**Actinovate Lawn & Garden®:** Supplies beneficial bacteria *Streptomyces lydicus*, which will colonize the roots or foliage of plants and provide protection against disease and soil pathogens. Controls late blight, pythium, rhizoctonia, phytophthora, fusarium, powdery and downy mildew, verticillium, and other fungal diseases. Apply as a root drench or foliar spray 3–12 oz./150 gal. water/acre.

**320 OGS/PGS, 2oz \$27 / 18oz \$157**

**Regalia®:** Active against soil borne and other pathogens that triggers a plant's natural defenses to protect against a variety of fungal and bacterial diseases. Designed for field and greenhouse applications, to maximize plant health, quality and yield in a wide variety of specialty crops—including grapes, tomatoes, leafy greens, potatoes, cucurbits and berries.

**351 OGS, 2.5 gal \$225**

**Birdscare Flash Tape:** Silver and red metallized 7/16" x 290' plastic tape is a cost-effective method to protect crops against bird damage. Suspend tape in a loose spiral above the crop. Tape flashes and flickers, resembling fire. More effective against flocking birds and crows than robins and sparrows. Don't apply too early or birds may get accustomed to tape.

**321 OGS, \$7**

**Red Ball Traps:** Use to monitor and trap insects, including apple maggot fly and cherry fruit fly. Sturdy 3½" reusable hollow glossy red plastic ball with hook and wire for hanging. Use one red ball to monitor a few trees.

**353 OGS, \$4**

**Stiky Stuff:** All-weather adhesive used to coat red ball traps for monitoring and trapping insect populations. Sticky and odorless coating. 8 oz covers approx. 7 red ball traps.

**361 OGS, 8 oz. \$14** **NEW**

**Sticky Strips:** Use to monitor the presence and population level of insect pest species. Different colors attract different insects, choose yellow traps for aphids, cucumber beetles, fungus gnats, corn root worms or whiteflies; choose blue traps for thrips and leafminers. Yellow traps come with their own looped metal stakes; blue strips come with their own wire hangers. Sold in bundles of 10.

**362 OGS, yellow \$9/blue \$12** **NEW**

**Deer Stopper®:** Prevents damage by coating leaves and fruit, making them unpleasant to the deer. A mixture of rotten eggs and essential oils, it works by a combination of taste and smell. Dries clear and odor free, does not wash off in the rain. Lasts up to 30 days. Dilute 1:9 with water.

**323 OGS, 1 qt. \$46**

**Orchard Netting:** Keep critters away from your fruit and protect poultry runs from hawks. Strong and durable black polypropylene 3/4" mesh with UV inhibitors.

**332 OGS, 7'x20' \$9 / 14'x14' \$10 / 28' x 28' \$34**

---

## Weed Control

---

**Weed Guard Plus:** Biodegradable mulch and weed barrier made from sturdy dark brown paper. Porous enough to allow water penetration. Provides a season's worth of weed suppression and soil temp moderation and can be worked into the soil after the growing season.  
**324 OGS, 36"x 250' \$59 / 36"x500' \$94**

**Black plastic mulch:** 1.25 mil thick, 4' wide. Reduces weed pressure, warms soil.  
**325 OGS, 50' \$6 / 250' \$22**

**IRT Mulch <sup>®</sup>:** 1.0 mil thick, 4' wide. Allows infrared light in to heat soil for longer season crops.  
**326 OGS, 50' \$9 / 250' \$34 / 2400' \$210**

**Woven Ground Cover:** Looks on one side like the single-layer woven landscape fabric commonly used for weed suppression, but this product has a thick felt-like plastic layer on the other side that allows total light exclusion—even robust weeds like crab grass can't penetrate. More effective occultation than single-layer landscape fabric, and much longer-lasting. Can be used as perimeter weed barrier around gardens, as windrowed compost blankets and under permanent walkways and trees.  
**327 OGS, 4'x50' \$63 / 4'x250' \$224 / 6'x50' \$93 / 6'x250' \$329**

**Ground Staples:** 6" galvanized wire staples to hold down landscape fabrics and paper mulches and row cover edges.  
**328 OGS, 25 count \$3 / 100 ct \$10 1000 ct \$97**

**Hori-Hori Weeding Knife:** Thick concave steel blade with bevelled edges tapering to a point, one semi-sharp smooth edge and one serrated edge. The 6½" blade extends 2½" into the wooden handle to which it is securely riveted.  
**356 OGS, \$36**

**Wire Weeder:** Lightweight, maneuverable weeder; like a hoe but with a sturdy 5" wide wire head that pulls roots of small weeds in the top layer of soil with minimal disturbance. In soft soil, this tool can even pull established weeds. Aluminum handle with foam grips. Never needs sharpening! Made by Two Bad Cats, a small farm tool company in VT.  
**333 OGS, Long Wire Weeder, 60" \$58 / Hand Wire Weeder, 15" \$33**

---

## Seed Starting & Greenhouse Supplies

---

**1020 Trays with holes:** 10½x21x2¼" grey plastic trays with drain holes.  
**354 OGS, 5 \$10 / 100 \$173 <sup>NEW</sup>**

**Domes:** Clear plastic raised covers, approximately 2" high, fit over 1020 Trays to create a miniature greenhouse environment for seedlings.  
**355 OGS, 5 \$6 / 50 \$107 <sup>NEW</sup>**

**Mesh Bottom Trays:** Plastic trays with open mesh bottoms for plug flats or soil blocks.  
**335 OGS, 5 trays \$9 / 50 ct case \$81**

**Precise Heat Mat:** Agritape heating element and built-in adjustable dial thermostat. Provides an extremely uniform precise temperature over its entire surface. The control unit has a flexible 3' tube with a temperature-sensor bulb to insert into the soil; set the dial to desired soil temperature. Built-in GFCI shuts off the heater if dampness causes a short. Seed trays can be placed directly on the tape. Rolls up easily for storage. Comes in two sizes: 4' or 8' long, both lengths are 11" wide. Uses 20 watts of electricity per foot.  
**363 OGS, 4' \$155 / 8' \$182 <sup>NEW</sup>**

**Jiffy pots:** Plant directly in the ground.  
**334 OGS, 3" rounds 50 ct \$5 / 4.5" round \$9**

**Transplanter Pot <sup>®</sup>:** Like Fabric Pots (see Field and Garden Supplies), but with a slit side to allow for easier transplanting without disturbing the root ball. Slit sides overlap so the pot holds the growing media without leaking.  
**360 OGS, 1 gal \$4**

**Pot Labels** 5" x 5/8" x 1/8" untreated wooden sticks for labeling seedlings. Made in Maine!  
**336 OGS, 50 pc \$2 / 1000 pc \$36**

---

## Field & Garden Supplies

---

**Soil Thermometer:** Bi-metal spring with 1<sup>5</sup>/<sub>8</sub>" needle dial on a 5" stainless steel probe for monitoring soil temps at planting depth. Registers from 20–180°.

**344 OGS, \$11**

**Field stakes:** Untreated wooden variety labels. 18" x 1<sup>1</sup>/<sub>8</sub>" x 1/4"

**337 OGS, 25 bundle \$13/ 100 bundle \$53**

**Garden stakes:** Wooden 12" x 1<sup>1</sup>/<sub>8</sub>" non-toxic white-painted labeling stakes.

**338 OGS, 25 pc \$6 / 250 pc \$56**

**Fabric Pots <sup>®</sup>:** Non-woven fabric pots provide excellent support to growing plants while allowing air to flow through the pot walls, preventing root circling and helping to aerate the growing medium. Lets water drain thoroughly. Fantastic for indoor growing. Built-in handles for easier maneuvering.

**359 OGS, 1 gal \$3 / 3 gal \$4 / 5 gal \$6/20 gal \$16**

**DeWitt Deluxe Floating Crop Cover:** Protects against frost and colder temperatures down to 28° F ; also protects against common pests such as cucumber beetles and flea beetles. 87% Light Transmission. Transmits 87% of sunlight. 0.55 oz. / yd<sup>2</sup>

**373 PGS, 83" x 500' \$68.00 / 83" x 1000' \$128.00/ 10' x 500' \$89.00** **NEW**

**DeWitt Deluxe Plus Floating Crop Cover:** Protects against frost and colder temperatures down to 26° F ; also protects against common pests such as cucumber beetles and flea beetles. Transmits 70% of sunlight. 1 oz / yd<sup>2</sup>

**374 PGS, 7' x 500' \$114/ 7' x 1000' \$203/ 10' x 500' \$153** **NEW**

**Wire Hoops:** Galvanized 10-gauge wire, 74" long. Shipped as straight rods. For building row cover tunnels. Most effective if spaced every 5' or less.

**330 OGS, 20 pack \$28 / 100 pack \$120**

**Tomato Stakes:** Untreated white oak stakes. 1"x1", sharpened end. Sold in bundles of 25 stakes.

**375 PGS, 48" \$25/60" \$29/72" \$35** **NEW**

**Trellis Plus:** 7" reach-through nylon mesh with 60# strand strength for tomatoes, beans and climbing cucurbits. Add a top wire for extra support.

**331 OGS, 5' x 30' \$13 / 5' x 60' \$24**

**Tomato Twine:** Box with belt loop. 6300 ft.

**352 PGS, \$10**

**Garden Irrigation Starter Kit:** Everything you need to set up a drip irrigation system on a small scale. Includes 200' of low-flow T-tape-brand drip tape, 10 T-tape fittings which plug into mainline, 10 sleeve ends to seal end of line of T-tape, and 2 couplers to repair breaks or tears in T-tape line. Pair with the **Garden Irrigation Extension Kit** to get an additional 200' of irrigation. Extension kit contains: 200' of low-flow drip tape, 10 drip-tape fittings which plug into the mainline, 10 drip-tape ends to seal the end of a line of drip tape, 2 couplers to repair breaks or tears in the drip-tape line.

**339 OGS, Starter Kit \$110 /Expansion Kit \$45**

**Solo 475 Backpack Sprayer:** Built to last, with a high-density polyethylene tank with ultra-violet inhibitors allows for unmatched durability and ultra-violet protection. The diaphragm is made of high-quality Viton, which is resistant to harsh chemicals and abrasion. The diaphragm pump is ideal for handling chemicals in wet table powder form, as well as liquid formulations. Padded shoulder straps for greater comfort. 4 gal capacity.

**376 PGS, \$128** **NEW**

**Solo Handheld Sprayer:** Designed for general purpose spraying. Viton seals, long hose, large pump handle and funnel top for easy filling. Includes an assortment of four nozzles. Adjustable for spraying a steam to a mist; Flat Fan for area and row application; Hollow Cone for shrubs and bushes; and Jet Stream for additional reach.

**377 PGS, 1 gal \$48/ 2 gal \$56** **NEW**

**Felco Hand Pruners:** The classic Felco hand pruners: heavy-duty, lightweight, comfortable to hold. Excellent cutting action. Blade features a sap groove and soft-wire cutter. Easy to adjust and sharpen.

**364 OGS, #8 (Right-handed) \$75 /**

**#9 (left-handed) \$75** **NEW**

**Felco #200-A Loppers:** An excellent lopper with 17" tubular aluminum handles capable of cutting branches up to 1<sup>1</sup>/<sub>2</sub>" diameter. Comfortable to handle, easy to use.

**365 OGS, \$100** **NEW**

**Victorinox Folding Grafting Knife:** 2<sup>1</sup>/<sub>4</sub> stainless steel blade beveled on one face to make a flat cut. A durable, alloy-lined nylon handle features a sating finish for a comfortable grip. Total knife length – 3<sup>1</sup>/<sub>2</sub>" closed, 6<sup>1</sup>/<sub>2</sub>" open. Made in Switzerland.

**343 OGS, Right-handed \$14/ Left-handed \$34.00**

**Wheeler Pruning Saw:** One of the best all-around pruning saws. Looks like a hacksaw, cuts like a sharp knife through soft butter. Blade can be installed to cut on the pull or push stroke. Wooden handle, arched metal frame. 10 teeth/inch. Blade length, 14"; total saw length, 16"; weight, 11.5 oz.

**366 OGS, \$45** **NEW**



---

## Harvest & Packing

---

**Broccoli Knife:** Rounded-blade knife. Stainless steel blade has high carbon content for easy sharpening. Blade 7" long, 2" wide at widest point; handle 4 3/4" long, bright yellow plastic.

**341 OGS, \$7**

**Asparagus Knife:** 1 1/2x7" blade, 15" handle with a pistol grip. Stick the knife into the soil against the stalk to harvest it a ~2" below the ground. The blade is slightly concave to slice the stalk cleanly.

**342 OGS, \$16**

**Felco® #310 Harvest Shears:** Fruit and vegetable harvesting shear, lightweight with a narrow needle-nose head for harvesting grapes, cutflowers, broccoli sideshoots, and other produce. Manufactured in Italy with the same fine steel as the more expensive Felco tools.

**367 OGS, \$18** NEW

**Felco® #300 Flower Shears:** Useful for light pruning, deadheading and cutting stems for arranging. Manufactured in Italy with the same fine steel as the more expensive Felco tools. A lightweight inexpensive introduction to this excellent line.

**368 OGS, \$18** NEW

**Hydroponic Shears:** For trimming jobs requiring delicacy and precision. Stainless steel blades extend through the rubber-coated plastic handles, making these shears as durable as they are lightweight.

**369 OGS, \$15** NEW

**Fruit Pole Picker:** Foam-lined cradle and narrow curved teeth; the handle is fiberglass and telescopes from 6 1/2' to 13' to pick those perfect fruits way up high.

**370 OGS, \$37** NEW

**Bunching Bands:** 1# pkg. These are #64 size, 1/4x3 1/2", approximately 425 per pound. Useful for bunching broccoli, dried flowers, carrots, beets and scallions for market.

**346 OGS, \$9**

**Plastic Roll Bags:** Clear plastic, printed with the recommendation to eat 5 servings of vegetables / day in green ink, 2000 ct.

**345 OGS, 10"x15" \$57 / 12"x20" \$59**

**Burlap Bags:** Holds 50# of potatoes, also works well in market displays (soak thoroughly to keep produce damp and cool). Jute bags are approximately 18x30". Untreated.

**347 OGS, set of 3, \$7**

**Potato Bags:** For sale of your spuds. Heavy paper, with mesh vent in front to avoid moisture build-up.

**348 OGS, 5 count packs, 5# size \$2 / 20# size \$3 / 50# size \$4**

**Mesh Produce Bags:** Red poly mesh with a fold-over stitch-sealed "Fresh Produce" label on one end of the 24" long bag. Holds up to 10 pounds of garlic or onions in an air-flow-friendly bag for curing or storing, or a convenient packaging for markets.

**371 OGS, 50 count package \$15** NEW

**Cardboard Tomato Flat:** White cardboard flats, holds approximately 10# of tomatoes in a single layer. Says "Select Tomatoes" on the side in red print. Stackable.

**372 OGS, 25 count bundle \$37** NEW

**Berry Boxes:** Standard green cardboard pulp boxes for berries, cherry tomatoes, new potatoes, peas, and other small items.

**349 PGS, 1/2 Pint (50 ct) \$6 / 1/2 Pint Case (600 ct) \$56 / Pint (50 ct) \$7 / Pint Case (500 ct) \$40 / Quart (50 ct) \$8 / Quart Case (250 ct) \$43**

**Shipper/Stackers for Berry Boxes:** White cardboard flats for safe storage and easy transport. 1/2 pint and pint shippers hold 12 berry boxes and say "Farm Fresh Produce" in red print. Quart shippers hold eight berry boxes and say "Quality Berries" in red print.

**378 PGS, 1/2 pt (50 ct) \$68 / 1/2 pt case (500 ct) \$710 / 1 pt (50 ct) \$72 / 1 pt case (500) \$675 / 1 qt. (50 ct) \$115 / 1 qt. case (500) \$1130** NEW

**Waxed Cardboard Vegetable Box:** For storing and packing your produce.

**379 PGS, 1 bushel (15 ct.) \$45** NEW

**Produce Baskets:** Classic wooden lath baskets with wire handles. Sets of 3.

**350 OGS, Bushel \$19 / Peck \$15 / Half Bushel \$16 / Half Peck \$14**

**Black Crate with Full Sides:** Sturdy recycled plastic bulb crates. 15.5" wide x 23.5" long x 7" tall at the corners.

**358 OGS, \$6 each**

---

# Tubers and Allium Sets

From Moose Tubers, Division of Fedco

**N** indicates **non-organic sets**: Certified growers must demonstrate that organic sets were not available

---

## Alliums .....

**Stuttgarter N**: Popular yellow storage onion. Firm 2"-3" diameter bulbs are flat-bottomed with a sweet, strong flavor. Good keeper. Plant as soon as the ground can be worked.

**200** 2# \$14 / 10# \$52 / 32# \$109

## Collections .....

**Specialty Organics Collection OG**: A well-rounded spud medley from Fedco's favorite organic growers that covers the seasonal potato spectrum. Fedco will choose five varieties to provide earlies and lates in multiple hues of skin and flesh. Varieties are chosen in spring when availability is known. All varieties are individually packaged and labeled. 2# each of five varieties."

**224** 10# \$30 **NEW**

## Fingerlings .....

**Magic Molly ORG**: Deep purple skin and flesh. Harvest as fingerlings early or as larger potatoes later. Vigorous plants, high yields and few diseases. Mollies win the taste award from the Moose Tubers picking crew. Slight inclination to scab.

**204** 2# \$14 / 10# \$46.50 / 25# \$102 / 50# \$133



## Early, 65-80 days .....

**Chieftain ORG**: Red skin, white flesh. Floury type bred in the UK. Matures a little later than most early varieties; can be marketed fresh but also stores well. Resistant to scab, net necrosis, stem end browning, and late blight.

**207** 2# \$9.50 / 10# \$32.50 / 50# \$103.50

**Dark Red Norland ORG**: Dark red skin, white flesh. Harvest in early July for the new potato market—not a storage variety. Resistant to growth cracks, early blight, hollow heart, scab and rhizoctonia. Variable yields.

**208** 2# \$9.50 / 10# \$32.50 / 50# \$103.50

**Satina ORG**: Silky yellow skin, smooth buttery yellow flesh. Sets early, yields high, stores well and is resistant to scab.

**209** 2# \$9.50 / 10# \$24 / 50# \$61.50

**Yukon Gem ORG**: Yellow skin, rosy eyes, yellow flesh. A new take on Yukon Gold, with higher yields and better PVY and scab resistances. Resistant to late blight and dry rot. Matures about 10 days later than Yukon Gold, but worth the wait.

**210** 2# \$9.50 / 10# \$32.50 / 50# \$103.50

**Yukon Gold ORG**: Yellow buff skin, rosy eyes, yellow flesh. Popular early variety with classic buttery flavor, appealing oval shape and highly marketable appearance. Susceptible to PVY and late blight, this variety is also known for poor emergence and low yields.

**211** 2# \$9.50 / 10# \$32.50 / 50# \$110

## Mid Season, 80-90 days .....

**Blue Gold / Peter Wilcox ORG**: Blue skin, butter-gold flesh. Also known as Peter Wilcox. Excellent yields. This is former Bulk Order Coordinator Caro's favorite variety of potato. Space at 10-12." Scab and nematode resistant, susceptible to scurfs, wilts and blights.

**214** 2# \$9.50 / 10# \$32.50 / 50# \$103.50

**Carola ORG**: Yellow skin and yellow flesh, firm and waxy. Fedco employees' pick as the best-tasting potato. However, Carola isn't the best performer in the patch—watch out for fungal blights. Often fails winter virus test, so may get shorted.

**215** 2# \$9.50 / 10# \$24 / 50# \$76

**Kennebec ORG**: Buff skin, white flesh; quintessential Maine potato. Very adaptable to various growing conditions, rugged, but sweet inside. Large uniform tubers store extremely well and resist late blight. High yielding, resistant to dry spells and leaf hopper. Susceptible to verticillium wilt and rhizoctonia. Tendency to scab.

**216** 2# \$9.50 / 10# \$32.50 / 50# \$103.50

**Adirondack Red ORG:** red skin, pinkish flesh. Intense bright skin, moist firm flesh that's rich in antioxidants. Resists skinning, scab, hollow heart, internal defects and growth cracks.

**225 2# \$9.50 / 10# \$32.50 / 50# \$103.50** **NEW**

**Red Maria / NY 139 ORG:** Red skin, white flesh. Less vivid colors than Strawberry Paw, but with super-sweet moist flesh. High yields and has excellent dormancy retention in winter storage.

**217 2# \$9.50 / 10# \$32.50 / 50# \$103.50**

**Strawberry Paw / NY 136 ORG:** Bright red skin, white flesh. Developed specifically for resistance to blight and scab. Generally good yields, medium size. Flesh is firm, sweet and moist. Known for vigorous nature and good storage.

**218 2# \$9.50 / 10# \$32.50 / 50# \$103.50**

**Gold Rush Russet ORG:** Russet skin, white flesh . A perfect baking potato, and it fries up like a champ, too. Good flavor and reliably high yields. Performs even in wet years or poor soils. Plant at wide spacing to allow tubers to grow to their full potential. Uniform, smooth and resistant to hollow heart. Good resistance to scab. Susceptible to blights and fusarium

**226 2# \$9.50 / 10# \$32.50 / 50# \$103.50**

**Caribou ORG:** Russet skin, white flesh. Great mashed, fried, or baked. Exceptionally low susceptibility to hollow heart. Moderately resistant to scab and verticillium wilt.

**219 2# \$9.50 / 10# \$32.5 / 50# 110**

**Vivaldi ORG:** Pale yellow skin, pale yellow flesh. This medium-early oval potato is known in the UK as the 'slimming potato,' as lab tests show it containing three quarters the calories of the average potato. High yields but low disease resistance.

**220 2# \$9.50 / 10# \$32.5 / 50# \$103.50**

**Late, 90+ days** .....

**Russet Burbank ORG:** Russet skin, white flesh. Known to most as the Idaho Potato, the dry mealy texture makes it a trusty old favorite. A great baking or mashing potato; its reliably high yields mature late in the season, and the plants show resistance to scab, black leg and fusarium. This dependable standard requires heavy feeding and regular moisture for exceptional performance.

**227 2# \$9.50 / 10# \$32.5 / 50# \$103.50** **NEW**

**Elba ORG:** Buff skin, white flesh. Bulky standard round storage potatoes; high yielding despite slow spring emergence. Survives in less-than optimal conditions. First pick for defense against fungal blights.

**222 2# \$9.50 / 10# \$32.5 / 50# \$103.50**

**German Butterball ORG:** Lightly russeted yellow skin, yellow flesh. High yields, good storer, and shows some virus and scab resistance. Susceptible to rhizoctonia.

**223 2# \$9.50 / 10# \$24 / 50# \$75**

---

*For more information on all tubers varieties, please visit [fedcoseeds.com](http://fedcoseeds.com).*

**Conventional tubers** may be ordered using the NOFA Bulk Order paper order form and writing in **Moose Tubers catalogue retail prices.**

