

### Butterflies

## Winged Beauties

Butterflies are found in almost all of Olympic National Park's diverse habitats. Some are even unique (endemic) to this isolated area. Many microhabitats in the park have yet to be surveyed and data on host and nectar plants is incomplete. Continued research will help us learn more about these ephemeral, beautiful animals. Look for the showy adults, as well as other stages: eggs, larva (caterpillar), or pupa (chrysalis) on host plants. To enhance your experience, bring binoculars for close up views and a notebook to record your observations.

### Swallowtails and relatives, Family: PAPILIONIDAE

Clodius Parnassian, *Parnassius clodius claudians*: common in a variety of habitats  
Olympic Parnassian, *Parnassius smintheus olympiannus*: high elevations where *Sedum* grows  
Anise Swallowtail, *Papilio zelicaon zelicaon*: very common in most habitats  
Western Tiger Swallowtail, *Papilio rutulus*: very common in most habitats  
Pale Tiger Swallowtail, *Papilio eurymedon*: not as common as other swallowtails



Western Tiger Swallowtail  
(2.5 - 3.5")

### Whites, Marbles, Sulphurs, Family: PIERIDAE

Pine White, *Neophasia menapia tau*: seen high in conifer tree tops  
Spring White, *Pontia sisymbrii flavitincta*: northeastern alpine areas  
Western White, *Pontia occidentalis occidentalis*: not common  
Margined White, *Pieris marginalis marginalis*: in and around wooded areas  
Cabbage White, *Pieris rapae*: non native, introduced species common in gardens  
Sara's Orangetip, *Anthocharis sara flora*: common in eastern open habitats  
Clouded Sulphur, *Colias philodice eriphyle*: documented only from northeastern areas  
Western Sulphur, *Colias occidentalis occidentalis*: open areas around forests at all elevations

### Gossamer Wings, Family: LYCAENIDAE

Purplish Copper, *Lycaena helloides helloides*: common and often abundant in almost all habitats  
Lilac-Bordered Copper, *Lycaena nivalis browni*: mid to high elevations in eastern areas  
Mariposa Copper, *Lycaena mariposa mariposa*: openings in eastern montane areas  
Makah Copper, *Lycaena mariposa charlottensis*: coastal bogs  
Sylvan Hairstreak, *Satyrrium sylvinum nootka*: not common in wetlands and canyons  
Bramble Green Hairstreak, *Callophrys perplexa perplexa*: open areas in forests  
Johnson's Hairstreak, *Mitoura johnsoni*: old growth forests, larvae feed on mistletoe  
Cedar Hairstreak, *Mitoura grynea plicataria*: not common but found near cedar trees  
Brown Elfin, *Incisalia augustinus iroides*: lowland to mid elevations in eastern areas  
Moss's Elfin, *Incisalia mossii mossii*: sea level to high elevation in eastern areas  
Hoary Elfin, *Incisalia polia polia*: lowlands in southeastern areas  
Gray Hairstreak, *Strymon melinus atrofasciatus*: low to mid elevations in eastern areas  
Western Tailed Blue, *Everes amyntula amyntula*: all elevations in northeastern areas  
Spring Azure, *Celastrina argiolus echo*: common in eastern and southern forests  
Silvery Blue, *Glaucoopsyche lydamus columbia*: moist open areas in eastern areas  
Anna's Blue, *Lycaeides anna vancouverense*: high elevations of northeastern areas  
Greenish Blue, *Plebejus saepiolus aehaja*: wet, montane northeastern areas  
Boisduval's Blue, *Icaricia icariodes blackmorei*: found where lupine abounds  
Spangled Blue, *Icaricia acmon spangelatus*: low to high elevations in northeastern areas  
Arctic Blue, *Agriades glandon megalis*: high elevations, hence the common name



Egg, caterpillar and chrysalis



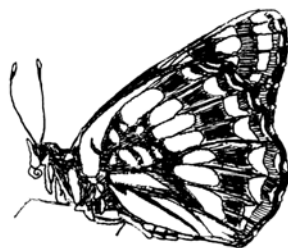
## Brush-Footed Butterflies, Family: NYMPHALIDAE

Great Spangled Fritillary, *Speyeria cybele pugetensis*: low to mid elevations in eastern areas  
Zerene Fritillary, *Speyeria zerene* new ssp.?: an unnamed subspecies found in eastern Olympic Mountains  
Hydaspe Fritillary, *Speyeria hydaspe rhodope*: relatively common in wet, montane areas  
Western Meadow Fritillary, *Boloria epithore chermocki*: very common in open areas  
Arctic Fritillary, *Boloria chariclea rainieri*: common in openings from mid to high elevations  
Field Crescent, *Phyciodes pulchellus owimba*: common in meadows from mid to high elevations  
Mylitta Crescent, *Phyciodes mylitta mylitta*: common from sea level to mid elevations  
Chalcedona Checkerspot, *Euphydryas chalcedona* new ssp.?: an unnamed subspecies  
Edith's Checkerspot, *Euphydryas editha colonia*: high elevations in northeastern areas  
Satyr Anglewing, *Polygonia satyrus*: common in many habitats  
Green Comma, *Polygonia faunus rusticus*: forests in most areas  
Hoary Comma, *Polygonia gracilis*: common at high elevations in most areas  
Oreas Anglewing, *Polygonia oreas silenus*: edges of old growth forests in eastern areas  
California Tortoiseshell, *Nymphalis californica*: mid to high elevations of most areas  
Mourning Cloak, *Nymphalis antiopa*: not common in eastern riparian and open areas  
Milbert's Tortoiseshell, *Nymphalis milberti*: where nettles grow in eastern low to mid elevations  
American Lady, *Vanessa virginiensis*: rare in low elevations in southwestern areas  
West Coast Lady, *Vanessa annabella*: common in many habitats  
Painted Lady, *Vanessa cardui*: very common in all habitats  
Red Admirable, *Vanessa atalanta rubric*: very common in all habitats  
Lorquin's Admiral, *Limenitis lorquini*: common from sea level to mid elevations  
Common Wood Nymph, *Cercyonis pegala*: common in prairies, meadows and open areas  
Vidler's Alpine, *Erebia vidleri*: mid to high elevation meadows and open areas  
Olympic Arctic, *Oeneis chryxus valerata*: ENDEMIC, found only at high elevations

## Skippers, Family: HESPERIDAE

Silver-spotted Skipper, *Epargyreus clarus californicus*: open areas at lower to middle elevations  
Northern Cloudywing, *Thorybes pylades*: not common  
Dreamy Duskywing, *Erynnis icelus*: lowland to mid elevations in southeastern areas  
Persius Duskywing, *Erynnis persius*: common in open areas  
Two-Banded Checkered Skipper, *Pyrgus ruralis ruralis*: common in spring at all elevations  
Arctic Skipper, *Carterocephalus palaemon magnus*: mid elevations in northeastern areas  
Common Branded Skipper, *Hesperia comma hulbirti*: ENDEMIC, found at high elevations  
Sonoran Skipper, *Polites sonora sonora*: high elevation subspecies found in northeastern areas  
Dog Star Skipper, *Polites sonora siris*: low elevation prairies and non-native meadows  
Woodland Skipper, *Ochlodes sylvanoides sylvanoides*: extremely common in open areas  
Ozette Skipper, *Ochlodes sylvanoides* new ssp.?: perhaps new subspecies from Ozette area  
Dun Skipper, *Euphyes vestris vestris*: common in a variety of open areas in southern areas

NOTE: Butterfly scientific names are subject to a great deal of discussion among experts, some tend to lump subspecies, others to split. Common names are also included, but be aware multiple common names may be associated with a single species.



Egg, Caterpillar, Chrysalis



Lorquin's Admiral (2 - 2.6")  
All drawings by Kristi Knowles