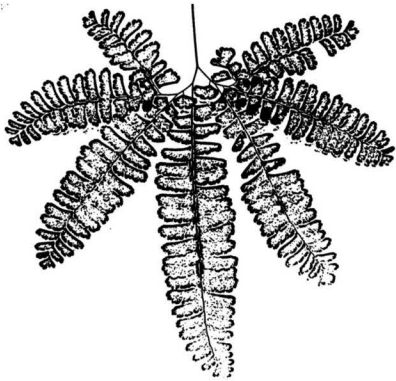




Common Native Ferns and Allies



Five-finger Fern
Adiantum aleuticum

Fan-shaped, delicate fern with long black stems, found in moist shady areas such as Fern Canyon.



Lady Fern

Athyrium filix-femina var. *cyclosorum*

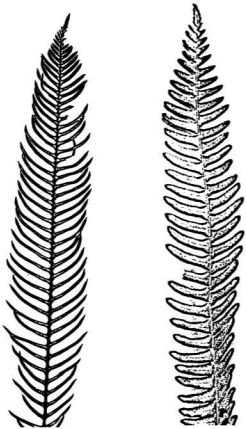
Very common fern in moist redwood forests. Often found near creeks. Delicate fronds taper at base to form a diamond outline.



Wood Fern

Dryopteris arguta

Often found growing from stumps, or woody debris. Forms triangle at base unlike Lady Fern.



Deer Fern
Blechnum spicant

Long, narrow, erect fern tapers at tip and base. Slender fronds at left are fertile, sterile at right.



Bracken Fern

Pteridium aquilinum var. *pubescens*

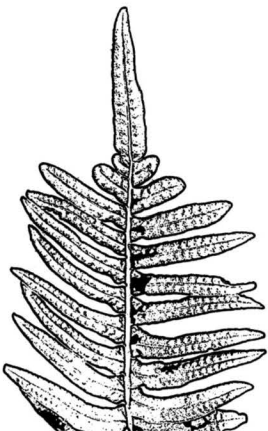
Grows in large colonies in meadows. Triangular in outline. Most widely spread fern in world.



Sword Fern

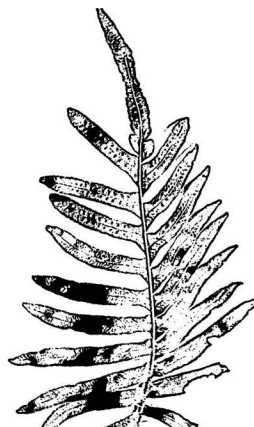
Polystichum munitum

Dark green, tall, dry fern with pinnae that taper toward base to resemble hilt of sword.



Leather Fern
Polypodium scolieri

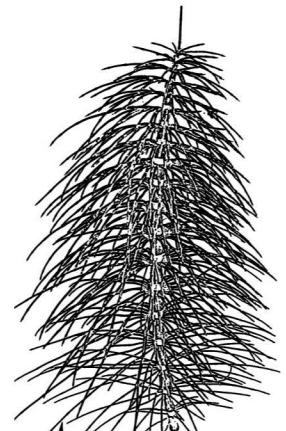
Often grows as epiphyte on tree bark or in canopies. Fronds have thick, leathery texture.



Licorice Fern

Polypodium glycyrrhiza

Often grows on big-leaf maples within park. Chewed rhizome has licorice taste.



Common Horsetail
Equisetum arvense

Like ferns, Horsetails reproduce via spores. Leaves grow in whorls from joints. One of earth's oldest plants.