

# Rare Plants and Ranchers

## Stewardship Solutions to Plant Species at Risk Conservation

### Introduction

Rare Plants and Ranchers works with landowners who have plant species at risk (SAR) to develop site specific beneficial management plans for SAR using an ecosystem-based, multi-species approach.

### How It Works

The Native Plant Society of Saskatchewan (NPSS) conducts a comprehensive land assessment, including the following:

- Landowner visit and interview
- Range and riparian health assessments
- Photo plots
- Invasive species data collection
- Surveys and mapping of SAR populations and habitat
- Surveys of adjacent, non-SAR habitat
- Incidental observations

Using the information collected, a site specific beneficial management plan is produced and given to the landowner. These plans contain all of the information collected and also list a series of recommendations to benefit the SAR based upon the findings.

### Then What Happens?

Ongoing logistical support and cost sharing from the NPSS helps the landowner implement the plan's recommendations. Monitoring and adaptive management ensure that the landowners have a practical solution, and that SAR populations are being managed effectively.



Dwarf Woolly-heads



Small-flowered Sand-verbena

### Plant Species at Risk Addressed

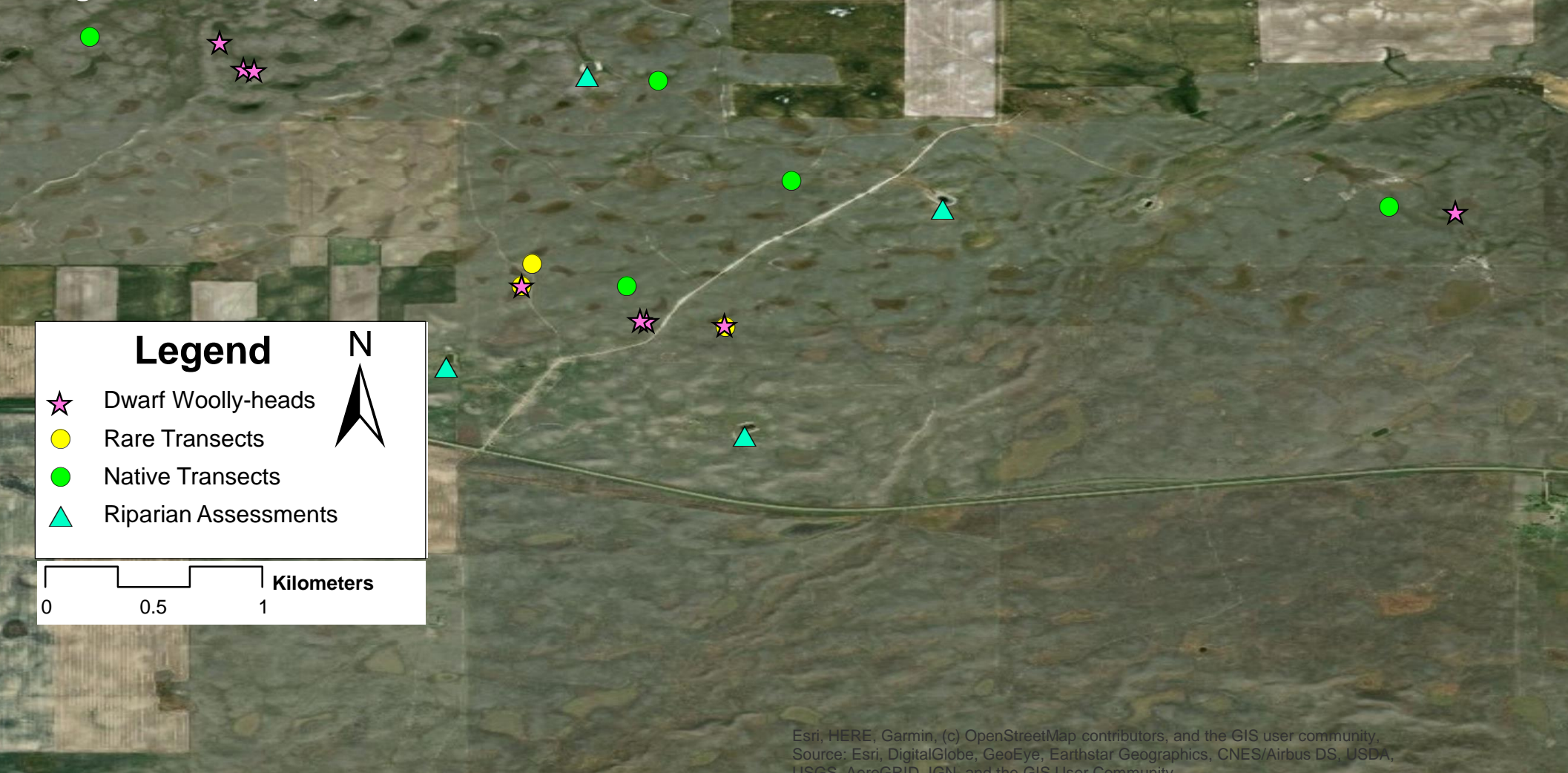
- Buffalograss (*Bouteloua dactyloides*)
- Dwarf Woolly-heads (*Psilocarphus brevissimus*)\*
- Hairy Prairie-clover (*Dalea villosa* var. *villosa*)
- Slender Mouse-ear-cress (*Transberingia bursifolia* ssp. *virgata*)\*
- Small-flowered Sand-verbena (*Tripterocalyx micranthus*)\*
- Smooth Goosefoot (*Chenopodium subglabrum*)\*
- Tiny Cryptantha (*Cryptantha minima*)
- Western Spiderwort (*Tradescantia occidentalis*)

\*species addressed in 2019

### Results as of 2019

- 25 participating landowners
- 133,022 acres (53,832 ha) of habitat with SAR management plans; 5,280 acres (2,136 ha) added in 2019
- 11,861 acres (4,800 ha) of SAR habitat monitored in 2019
- 835 plant SAR occurrences found or monitored
- 323 occurrences of 13 provincially rare plant species found
- 294 occurrences of 15 invasive species found

The result of surveying and mapping a typical property. This property was new to the program in 2019 and the pink stars represent the Dwarf Woolly-heads locations that were not previously known. Provincially-rare plant species and invasive plant species were also mapped (not shown). Range health assessments were completed on each of the transects and riparian health assessments were completed at dugouts and on ephemeral wetlands.



Smooth goosefoot



Scan this code with your phone for more information on Rare Plants and Ranchers.