

**EcolSciences, Inc.**  
Environmental Management & Regulatory Compliance

**THREATENED AND ENDANGERED SPECIES  
HABITAT IMPACT ASSESSMENT  
FOR  
OYSTER CREEK GENERATING STATION  
NATIONAL SECURITY UPGRADES  
TOWNSHIP OF LACEY  
OCEAN COUNTY, NEW JERSEY**

Prepared for:

Amergen Energy Co., LLC  
P.O. Box 388  
Route 9 South  
Forked River, New Jersey 08731

Prepared by:

EcolSciences, Inc.  
75 Fleetwood Drive, Suite 250  
Rockaway, New Jersey 07866

July 7, 2004

## TABLE OF CONTENTS

	<u>Page</u>
I. EXECUTIVE SUMMARY .....	1
II. ASSESSMENT METHODOLOGY .....	4
A. Background Data Collection .....	4
B. Natural Heritage Program and Landscape Project Map .....	4
C. Natural Heritage Grid Map.....	5
D. Vernal Habitat Map .....	5
E. Pine Snake Habitat Map .....	5
F. Field Investigation .....	6
III. RESULTS .....	7
A. Natural Heritage Program and Landscape Project Map .....	7
B. Natural Heritage Grid Map.....	9
C. Vernal Habitat Map .....	9
D. Pine Snake Habitat Map .....	9
E. Field Investigation .....	15
IV. CONCLUSION.....	18
V. REFERENCES .....	19

## LIST OF FIGURES

	<u>Page</u>
Figure 1: USGS Site Location.....	2
Figure 2: Landscape Project.....	8
Figure 3: Natural Heritage Grid Map.....	10
Figure 4: Vernal Habitat.....	11
Figure 5: Pine Snake Land Use/Land Cover.....	12
Figure 6: Pine Snake Soils.....	13
Figure 7: Pine Snake Habitat.....	14
Figure 8: Pine Barrens Treefrog Control Site .....	17

## LIST OF ATTACHMENTS

- ATTACHMENT A - Natural Heritage Program Letter
- ATTACHMENT B - Qualifications of Preparers

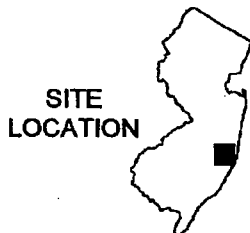
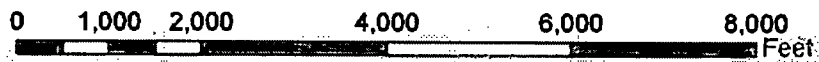
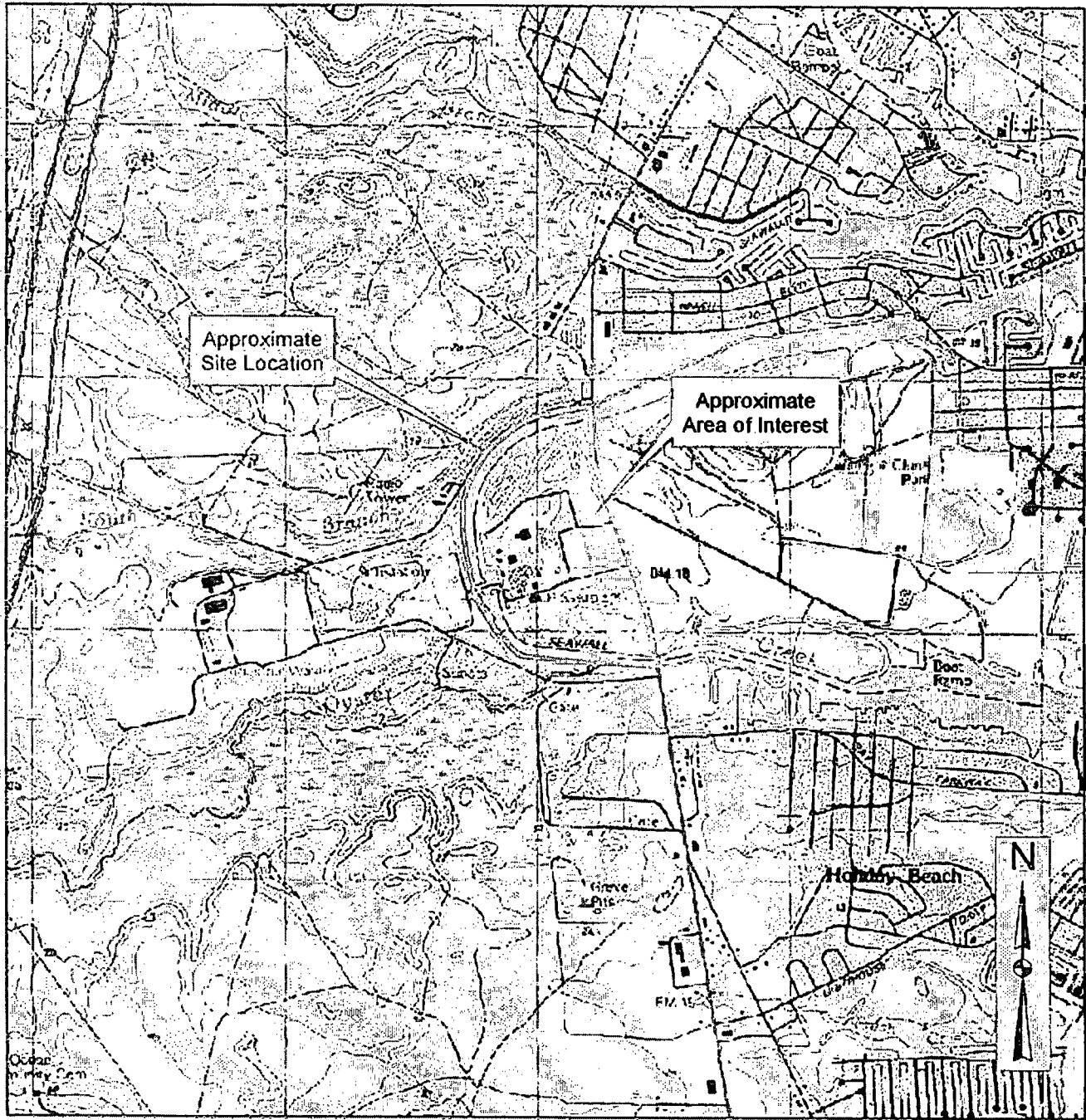
## I. EXECUTIVE SUMMARY

EcolSciences has been retained by AmerGen Energy Co, LLC to conduct a threatened and endangered species habitat impact assessment on a portion of the site of the Oyster Creek Generating Station, in Lacey Township, Ocean County, New Jersey. Planned National Security upgrades around the generating station have necessitated a review of possible impacts to potential threatened and endangered species habitat in undeveloped portions of the facility. These upgrades include vehicle barriers, fences, realigned road accesses, and an expanded parking lot. The evaluation focused on undeveloped portions of the site where proposed activities will take place, between the generating station to the west and US Route 9 to the east, the intake canal to the north, and the discharge canal to the south (Figure 1). This area is characterized by field, pine-oak woodland, and scrub/shrub and forested wetland vegetation.

The threatened and endangered species habitat assessment involved a review of local threatened and endangered (T & E) species records from the Natural Heritage Program (NHP) of the New Jersey Department of Environmental Protection (NJDEP); review of the Landscape Project T & E habitat mapping program; review of the Natural Heritage Grid Map of rare plant species and ecological communities; review of vernal habitat mapping provided by Rutgers University and the NJDEP; mapping of potential habitat of the State-threatened northern pine snake (*Pituophis melanoleucus*) based on draft habitat delineation criteria devised by the NJDEP Endangered and Nongame Species Program (ENSP), and field surveys. Field surveys are especially helpful in providing ground truth to Landscape Project and ENSP mapping in assessing present conditions within close proximity of the site.

A request was made to the NHP regarding T & E species information in the vicinity of the site. According to the Natural Heritage Database and Landscape Project habitat mapping (Version 2.0) (see Attachment A), there are on-site records of the following species: the State-threatened Pine Barrens treefrog (*Hyla andersonii*), wood turtle (*Clemmys insculpta*) northern pine snake, barred owl (*Strix varia*), and Cooper's hawk (*Accipiter cooperii*); and herptile and invertebrate species of special concern. In addition, the NHP has indicated that three wetland-dependent rare plant species, Pine Barrens boneset (*Eupatorium resinosum*), New Jersey rush (*Juncus caesariensis*) and curly grass fern (*Schizaea pusilla*), may be in the immediate vicinity of the site. EcolSciences also reviewed the Landscape Project 2.0 map and found that there is a record of pine snake on-site.

Vernal habitat mapping indicates a potential vernal pool just north of the discharge canal that, during the initial site visit on April 28, 2004, appeared to possess vegetative structure and



State Plane Coordinates (New Jersey NAD 83)  
357,810' N; 575,025' E

**FIGURE 1: USGS SITE LOCATION**

Oyster Creek Generating Station  
Township of Lacey  
Ocean County, New Jersey

Source: USDA, NRCS. 2001. Digital Raster Graph of Ocean County,  
New Jersey. (Forked River, NJ quadrangle)

**EcolSciences, Inc.**  
Environmental Management & Regulatory Compliance

Date: 6/6/04

C:\GIS\data\Jobs\04\en04-066\usgs.mxd

hydrology characteristic of Pine Barrens treefrog habitat. Although no activities are proposed within these wetlands, a portion of the adjacent upland woodland may be considered critical habitat if an occurrence of Pine Barrens treefrog was confirmed. This would affect the proposed parking lot expansion that will encroach into this wooded area. In order to determine the presence or absence of Pine Barrens treefrog in this wetland, a survey was conducted on three evenings in June during the height of the calling period for Pine Barrens treefrog. Sampling conditions were deemed appropriate through use of a control site. No Pine Barrens treefrogs were identified within the wetland and, as a result, the wetland is not habitat for the species.

Based upon the database review and site investigations, the proposed National Security improvements at the Oyster Creek Generating Station are not expected to negatively impact threatened and endangered species. This determination is based upon the undeveloped portions within the area of interest lacking adequate habitat for the majority of the above-mentioned threatened and endangered species. Pine snake habitat mapping prepared for the site following ENSP draft protocols indicates that much of the area of interest is mapped as preferred habitat. However, the extent of this area is not expected to be large enough to support a sustainable population of pine snake. In addition, appropriate wetland habitats for wood turtle and barred owl and woodland for Cooper's Hawk is not present within the area of interest. As a result, the proposed National Security upgrades should be permitted by the NJDEP with no further threatened and endangered species studies.

The following sections describe the threatened and endangered species habitat assessment methodology, site description, and results of the investigation.

## II. ASSESSMENT METHODOLOGY

The threatened and endangered species habitat assessment involved a review of pertinent literature, a request for threatened and endangered species data from the NHP, review of the Landscape Project habitat map, review of a pine snake habitat map based on draft ENSP methodology, and an on-site investigation. The following provides details on the various aspects of the assessment:

### A. Background Data Collection

EcolSciences has assembled a collection of reference materials regarding threatened and endangered species from prior studies, scientific journals, and mapping. These technical reports contain information regarding the natural history, habitat requirements, and survey methodologies for these species.

### B. Natural Heritage Program and Landscape Project Map

The NJDEP Natural Heritage Program maintains an inventory of rare plant and animal species and exceptional natural communities. It is one of the single best resources regarding general T & E information in the state. Records of rare species are provided through museums, publications, wildlife and botanical experts, and fieldwork. Some regulatory agencies make use of the Natural Heritage Database to help make better informed decisions.

Starting in July 2002, the NHP adopted use of the Landscape Project to supplement T & E data requests. The Landscape Project was developed by the NJDEP, Division of Fish & Wildlife, Endangered & Nongame Species Program. It is a wildlife habitat-mapping program that is used to identify and map critical habitats for endangered, threatened, and special concern species. This method takes documented sightings of threatened and endangered wildlife and, based on a species-specific model, maps areas of suitable habitat contiguous to the sighting as critical wildlife habitat. In many cases, the mapped areas can be quite large, even encompassing square miles. The Landscape Project has undergone revision since its initial release. Landscape Project Version 2.0 was released in mid-February 2004 and is now used by the NHP for its data requests (NJDEP, NHP, 2004, pers. corr.). Landscape Project data can be downloaded from the ENSP website and viewed with stand-alone Geographic Information Systems (GIS) software or on the web at <http://www.crssa.rutgers.edu/projects/biodiv/biodiv.htm>.

### C. Natural Heritage Grid Map

The Office of Natural Lands Management maintains a database and associated map of documented rare plant species and ecological communities in New Jersey. The map is available for download at the NJDEP's Bureau of Geographic Information Systems website ([www.state.nj.us/dep/gis](http://www.state.nj.us/dep/gis)) and may be displayed using GIS software. The map consists of a coarse grid with cells ranging from 358 to 372 acres in size, only indicating the general location of rare species and/or communities, if any. Each cell with documented sightings is linked to corresponding rare plant and ecological community records in a data table.

### D. Vernal Habitat Map

The NJDEP and Rutgers University's Center for Remote Sensing and Spatial Analysis (CRSSA) are cooperating to map and document the State's vernal habitats. Vernal habitats are fish-free depressions that hold water for at least two months between March and September and provide breeding habitat for certain obligate and facultative species, some of which are endangered or threatened. Potential vernal habitats are identified through GIS and are certified through field work if the above criteria are met. The map is available on the web ([www.crssa.rutgers.edu/projects/biodiv/biodiv.htm](http://www.crssa.rutgers.edu/projects/biodiv/biodiv.htm)) and is continuously updated as potential vernal habitats are certified or proven not to meet the criteria.

### E. Pine Snake Habitat Map

The Endangered & Nongame Species Program has developed draft habitat delineation criteria for northern pine snake in a report entitled, *Northern Pine Snake Habitat Assessment and Mapping* ([www.state.nj/dep/fgw/pinesnak.htm](http://www.state.nj/dep/fgw/pinesnak.htm)). A map of potential habitat was prepared through the integration of selected digital land use/land cover and soils data through Geographic Information Systems (GIS). The map is not available from the ENSP but can be reproduced using ArcView GIS software on readily obtainable data from the NJDEP, Office of Information Management, Bureau of Geographic Information Systems and following the methodology outlined within the report. According to the ENSP methodology, specific land use/land cover and soils associated with northern pine snake are selected. Selected 1995/97 land use/land cover is classified into two categories, either primary (i.e., pine-dominant forests) or secondary (i.e., mixed deciduous forests). All soils types are considered and are categorized as primary, secondary, or tertiary. Primary (i.e., Lakehurst sands) and secondary (i.e., Woodmansie sands) are specific soil types frequently associated with pine snakes. Remaining soils are classified as tertiary.

Five habitat types are formed by the overlap of selected land use/land cover and soil polygons, with some types influenced in part by adjacency to other polygons. The intersection of primary land cover and primary soils forms 1-A, Preferred Habitat. Areas of primary land cover



over secondary soils that are also adjacent to 1-A habitat are referred to as 1-B, Preferred Habitat. However, when isolated from 1-A, this same combination is classified as 2, Suitable Habitat. Secondary cover that overlaps primary soils is considered 3, Suitable Habitat, only when adjacent to 1-A or 1-B Preferred Habitat; otherwise, it is excluded from consideration. Areas of primary cover that overlap tertiary soils and are adjacent to 1-A and 1B habitat form the last considered pine snake habitat unit, 4, Suitable Habitat.

F. Field Investigation

Conditions presented in the Landscape Project and pine snake habitat maps were field verified in a site inspection conducted on April 28, 2004. Notes on existing vegetation and soil characteristics were taken. Present land use on the site as well as the immediate area was also considered in an effort to determine the suitability of the area as potential habitat for threatened and endangered species. A survey for Pine Barrens treefrog was conducted within the on-site wetlands on the evenings of June 15, 22, and 30. On each evening, a control site was used to verify conditions were appropriate for sampling.

### III. RESULTS

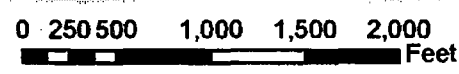
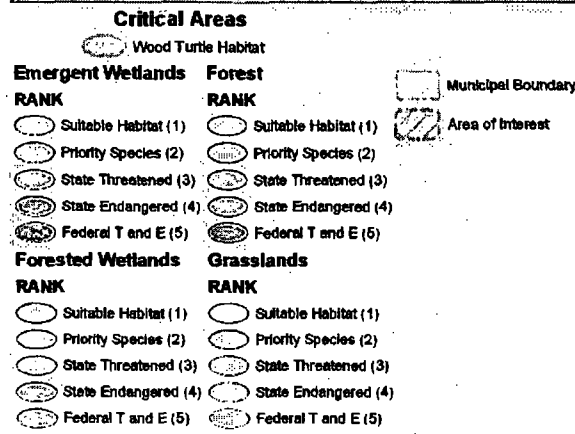
Based on surrounding land use, and existing land cover, EcolSciences has determined that the site does not serve as critical or suitable habitat for threatened and endangered species. The following sections provide details of EcolSciences' findings:

#### A. Natural Heritage Program and Landscape Project Map

The NHP has responded to a request for threatened and endangered species information for the site and its immediate vicinity (Attachment A). According to the Natural Heritage Database and Landscape Project (Version 2.0) habitat mapping, the following species occur on the site: the State-threatened Pine Barrens treefrog, northern pine snake, wood turtle, barred owl, Cooper's hawk and Pine Barrens treefrog; herptile species of special concern; and invertebrate species of special concern. In addition, the NHP has indicated that three wetland-dependent rare plant species, New Jersey rush, Pine Barrens boneset, and curly grass fern, may be in the immediate vicinity of the site.

Figure 2 presents Landscape Project (Version 2.0) mapping for the area surrounding the site and is not consistent with the NHP response regarding threatened and endangered species on the site. As shown, a forested polygon and forested wetland polygon are located entirely within the area bounded by the canal and Route 9. The on-site forest polygon is Rank 3, based on a record of northern pine snake. The forested wetland polygon is Rank 1, indicating a polygon that meets habitat-specific requirements, but does not intersect with any documented records of endangered, threatened, or priority species. The NHP response letter suggests the site boundary portrayed in Figure 1 was buffered, and this buffer intersects with large forest and forested wetland polygons that are adjacent to the canal. These large polygons have all wildlife species mentioned in the NHP letter.

The spatial extent of a polygon is dependent in part upon contiguity of areas of similar land use/land cover and is divided by major roads (500 level and above) (Niles, *et. al.*, 2004). The on-site forested polygon is 54 acres in area. The on-site forested wetland polygon is only 3 acres in area. In contrast, the large forested polygon adjacent to the canal is 6,833 acres and is bounded by US Route 9 to the east and north, the Garden State Parkway approximately 1 mile to the west, and County Route 532 approximately 1.3 miles to the south.



**FIGURE 2: LANDSCAPE PROJECT**

Oyster Creek Generating Station  
Township of Lacey  
Ocean County, New Jersey

Sources:  
NJDEP, DFW, ENSP. 2004. New Jersey's Landscape Project (Version 2.0)  
State of New Jersey, OIT. 2003. New Jersey 2002 High Resolution Orthophotography.

**EcolSciences, Inc.**  
Environmental Management & Regulatory Compliance

Date: 6/6/04  
C:\GIS\data\Jobs\04\en04-086\LP2.mxd

#### B. Natural Heritage Grid Map

Figure 3 presents Natural Heritage Grid Mapping for the site. As with the Natural Heritage Program response letter, the map indicates that three wetland-dependent species, New Jersey rush, Pine Barrens boneset, and curly-grass fern, occur within both cells the area of interest occupies. New Jersey rush and Pine Barrens boneset are State-endangered plant species while curly-grass fern has no such status in New Jersey outside of the Pine Barrens. In addition to the above, the northern cell indicates that a record of awned mountain mint, an upland plant of dry fields and upland woods, occurs nearby. The southern cell shows that a data sensitive species or ecological community with no identifying information occurs here. Figure 3 and the Natural Heritage Program response letter shows that the Forked River Natural Heritage Priority Site occurs near the area of interest. Its boundary justification is based on the presence of several globally rare and State listed plant species.

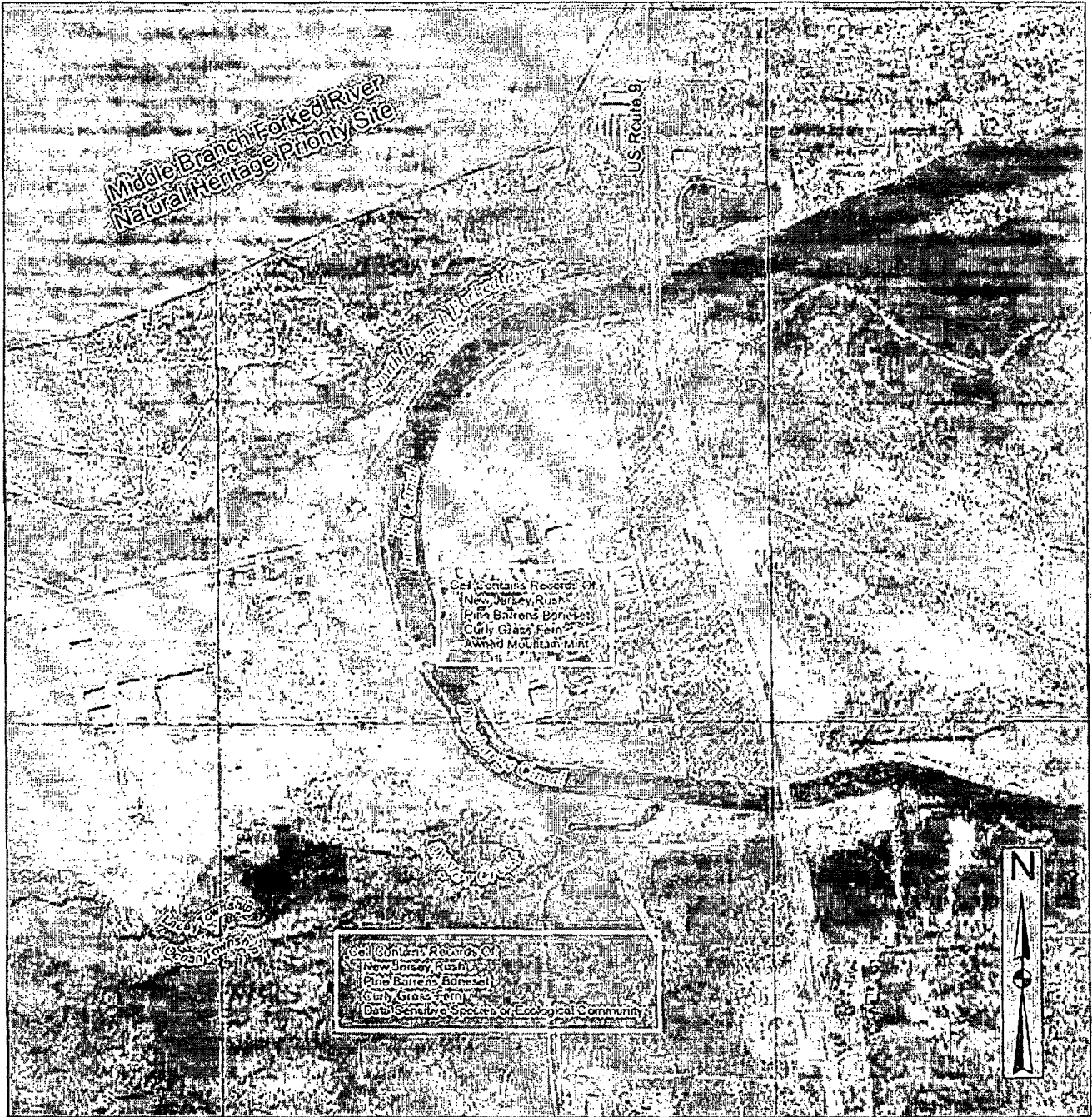
#### C. Vernal Habitat Map

The Center for Remote Sensing and Spatial Analysis has mapped a single potential vernal pool in the southern portion of the area of interest (Figure 4). This pool has not been surveyed to determine if it meets the NJDEP's criteria. This includes an assessment of obligate and/or facultative species that may be present.

#### D. Pine Snake Habitat Map




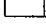

The NHP and Landscape Project mapping indicate records of northern pine snake near the area of interest. Based on these records, it is warranted to review pine snake habitat mapping using draft ENSP methodology. Figures 5 through 7 show, in steps, how the pine snake habitat map for the site was put together following this methodology.

Figure 5 reveals most of the area of interest is mapped as primary (4220 – coniferous forest) pine snake land use/land cover. Land use/land cover used in this figure is based on the same data used to create the Landscape Project. The majority of the area of interest is mapped as Lakehurst (LhA) soils, a primary pine snake substrate according to the ENSP (Figure 6). When both land use/land cover and soils are intersected (Figure 7), it results in Preferred Habitat (1-A) mapped for the majority of the area of interest. This suitable habitat represents areas of mapped primary cover over primary soils.



**Legend**

Natural Heritage Grid Map  
 February 2004 Version  
 Generalized Locations of Rare Plant Species  
 and Ecological Communities

-  S - Documented Location Known Precisely
-  M - Documented Location Known Within 1.5 Miles
-  Both - Both 'M' and 'S' Occurrences
-  Municipal Boundary
-  Area of Interest

0 250 500 1,000 1,500 2,000  
 Feet

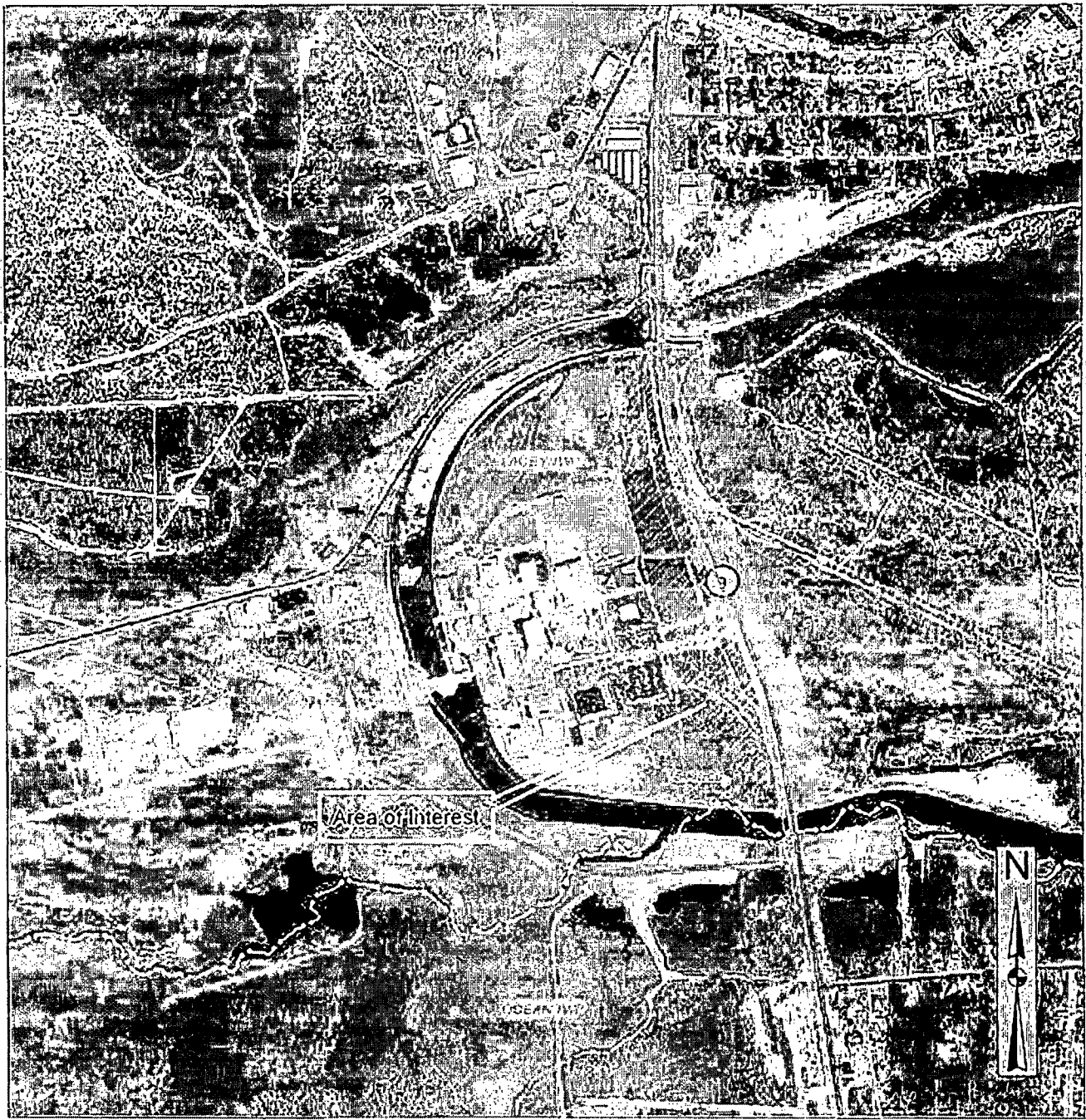
**FIGURE 3: NATURAL HERITAGE GRID MAP**

Oyster Creek Generating Station  
 Township of Lacey  
 Ocean County, New Jersey

Sources:  
 NJDEP, ONLM. 2004. Natural Heritage Grid Map.  
 State of New Jersey, CIT. 2003. New Jersey 2002 High Resolution Orthophotography.

**EcolSciences, Inc.**  
 Environmental Management & Regulatory Compliance

Date: 6/6/04  
 C:\GISdata\Jobs\04\en04-086\NHPgrid.mxd



**Legend**

**Potential/Certified Vernal Pools-**

**VERNAL**

- Certified
- Not Surveyed
- ⊗ Yes/Vernal pool
- ⊙ Not Vernal Pools
- ⊕ Freshwater Wetlands
- Municipalities

0 250 500 1,000 1,500 2,000 Feet

**FIGURE 4: VERNAL HABITAT**

Oyster Creek Generating Station  
Township of Lacey  
Ocean County, New Jersey

Source: NJDEP and Rutgers CRSSA. 2004. Mapping New Jersey's Vernal Pools.  
[www.crssa.rutgers.edu/projects/biodiv/biodiv.htm](http://www.crssa.rutgers.edu/projects/biodiv/biodiv.htm)

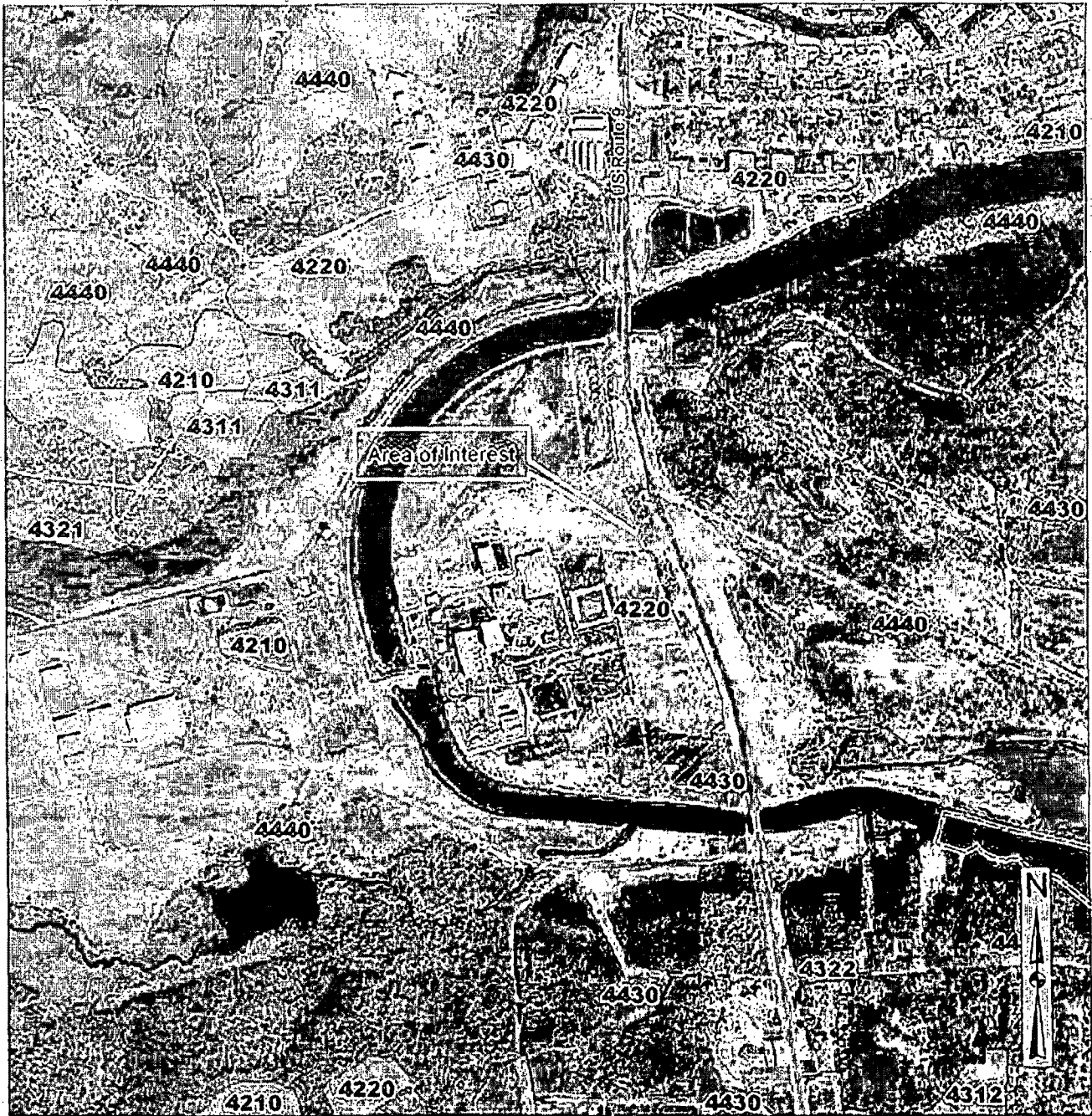
**EcolSciences, Inc.**

Environmental Management & Regulatory Compliance

Date: 6/6/04

C:\GISdata\Jobs04\en04-086\vernal.mxd





### Legend

 Primary Vegetation

**Code**

- 4210 Coniferous Forest (10-50% Crown Closure)
- 4220 Coniferous Forest (>50% Crown Closure)
- 4311 Mixed Forest (>50% Coniferous with 10-50% Crown Closure)
- 4312 Mixed Forest (>50% Coniferous with >50% Crown Closure)

 Secondary Vegetation

**Code**

- 4321 Mixed Forest (>50% Deciduous with 10-50% Crown Closure)
- 4322 Mixed Forest (>50% Deciduous with >50% Crown Closure)
- 4430 Coniferous Brush/Shrubland
- 4440 Mixed Deciduous/Coniferous Brush/Shrubland

\* According to ENSP methodology

0 250 500 1,000 1,500 2,000  
Feet

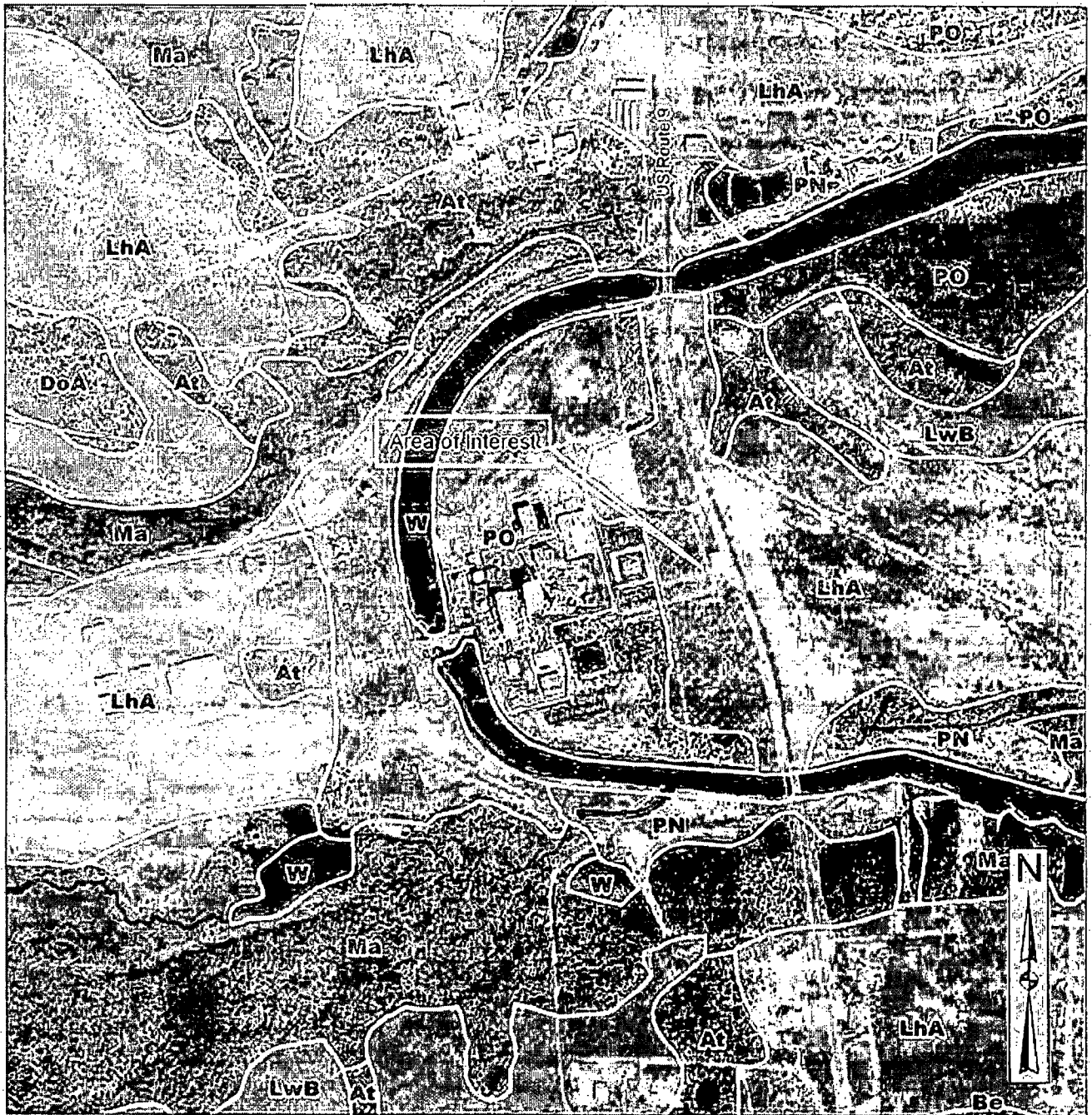
**FIGURE 5: PINE SNAKE LAND USE/LAND COVER\***

Oyster Creek Generating Station  
Township of Lacey  
Ocean County, New Jersey

Sources:  
NJDEP, OIRM, BGIS. 2001. 1995/97 Land Use/Land Cover, Series 1, Volume 6.  
State of New Jersey, Office of Information Technology. 2003. New Jersey  
2002 High Resolution Orthophotography

**EcolSciences, Inc.**  
Environmental Management & Regulatory Compliance

Date: 6/6/04  
C:\GISdata\Jobs\04\en04-0861  
npe\_jluc.mxd



0 250 500 1,000 1,500 2,000  
 Feet

**Legend**

-  Soils Boundaries
-  Primary Soils
  - Lakehurst
  - Lakewood
  - Evesboro Sands
-  Secondary Soils
  - Klej Sands
  - Klej Loamy Sands
  - Hammonton Loamy Sands
  - Woodmansie Sands
  - Abandoned Sand Mines
- All Other Soils Tertiary

\* According to ENSP methodology

**FIGURE 6: PINE SNAKE SOILS\***

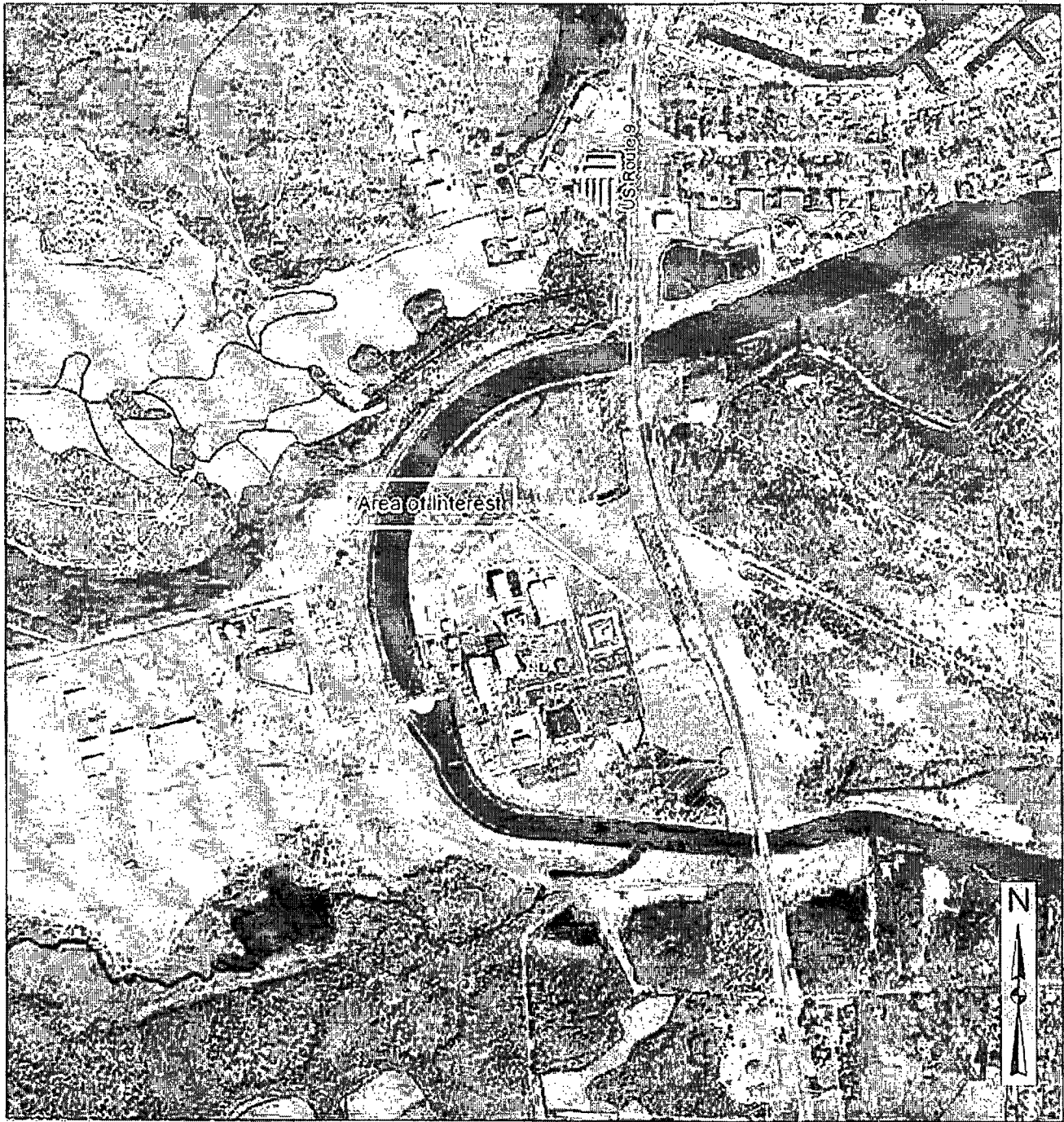
Oyster Creek Generating Station  
 Township of Lacey  
 Ocean County, New Jersey

Sources:  
 NJDEP, CIRRM, BGIS, 1996. GIS Resource Data, Series 1, Volume 2.  
 State of New Jersey, Office of Information Technology, 2003. New Jersey  
 2002 High Resolution Orthophotography

**EcolSciences, Inc.**  
 Environmental Management & Regulatory Compliance


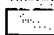

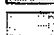
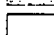
Date: 6/6/04  
 C:\GISdata\Jobs\04\en04-0861  
 rps\_soils.mxd





0 250 500 1,000 1,500 2,000  
Feet

**Legend**

-  1-A Preferred Habitat: Primary Cover, Primary Soils
-  1-B Preferred Habitat: Primary Cover, Secondary Soils (adjacent to 1-A)
-  2 Suitable Habitat: Primary Cover, Secondary Soils (isolated from 1-A)
-  3 Suitable Habitat: Secondary Cover, Primary Soils (adjacent to 1-A/1-B)
-  4 Suitable Habitat: Primary Cover, Tertiary Soils (adjacent to 1-A/1-B)

\* According to ENSP methodology

**FIGURE 7: PINE SNAKE HABITAT\***

Oyster Creek Generating Station  
Township of Lacey  
Ocean County, New Jersey

Sources:  
NJDEP, OIRM, BGIS. 1996. GIS Resource Data, Series 1, Volume 2.  
NJDEP, OIRM, BGIS. 2001. 1995/97 Land Use/Land Cover, Series 1, Volume 5.  
State of New Jersey, Office of Information Technology. 2003. New Jersey  
2002 High Resolution Orthophotography

**EcolSciences, Inc.**  
Environmental Management & Regulatory Compliance

Date: 8/6/04  
C:\GISdata\Jobs\04\en04-086\ nps\_habitat.mxd

E. Field Investigation

The site investigation was used to gather information on the on-site conditions and surrounding character of the area and to field verify conditions presented in Landscape Project and pine snake habitat mapping. The area of interest was found to consist of a mix of field, pine-oak woodland, and scrub/shrub and forested wetland vegetation.

Pitch pine is particularly prevalent within upland woodland portions of the area, growing densely especially to the north. Other fairly common trees within this community include black cherry, sassafras, and eastern red cedar. Scrub oak is common in the understory while black huckleberry and saplings of the above-mentioned trees are occasionally encountered. According to the Ocean County Soil Survey, as prepared by the USDA Soil Conservation Service (SCS, 1980), soils within the bulk of the area of interest consist of Lakehurst sands.

The combination of a coniferous canopy and sandy soils in other circumstances may be indicative of possible pine snake habitat as evidenced by habitat mapping. However, it is likely that the steep-sided banks, width and water of the canal surrounding much of the generating station in combination with US Route 9 would act as significant barriers to terrestrial species such as northern pine snake and wood turtle that may inhabit extensive territories. Cooper's hawk inhabits a wide variety of woodland types and is somewhat tolerant of human disturbance and forest fragmentation. No raptor nests were found during the site visit and the dense canopy and other human-influenced factors also likely combine to preclude the use of the woodland as Cooper's hawk habitat.

The potential Pine Barrens treefrog habitat consists of an area of emergent/scrub-shrub and forested wetlands just north of the discharge canal. Arrow arum, marsh fern, phragmites, spatulate-leaved sundew, sphagnum moss, water-lily and occasionally highbush blueberry are found in more open portions of the area. Atlantic white cedar, red maple, highbush blueberry, bayberry, sweet pepperbush, and inkberry line the edges. The southwestern portion of the wetland consists of numerous standing or fallen dead trees and is densely vegetated with various herbaceous species. Sweetbay magnolia is currently the only tree that marginally tolerates the saturated conditions. Swamp loosestrife is abundant and other common plants in this particular part of the wetland include marsh St. John's-wort, spotted joe-pye weed, bur-reed, bushy beardgrass, spike-rush, woolgrass, marsh fern, sweet flag, arrow arum, Canada rush, cranberry, and sphagnum moss. The eastern quarter of the wetland consists of open water that discharges intermittently to the southeast via a narrow channel, eventually emptying into the discharge canal, located approximately 200 feet south of the wetland.

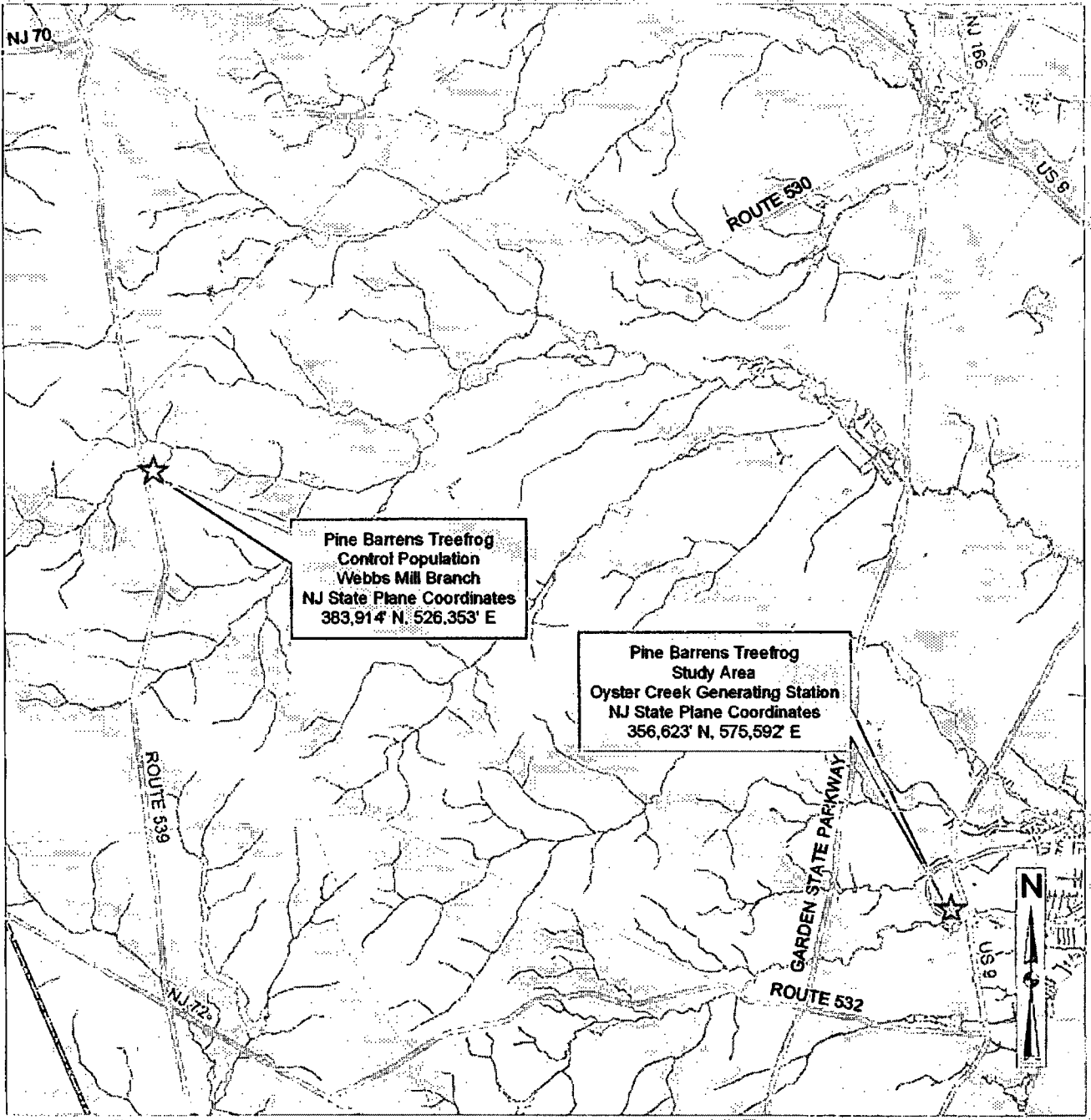
The on-site forested wetlands are far too small for barred owl, which requires extensive, relatively undisturbed forested and forested wetland areas for breeding and foraging. The emergent/scrub-shrub portion of the wetlands, though, during the initial April 28, 2004 visit appeared to provide suitable Pine Barrens treefrog habitat and nearby Natural Heritage and Landscape Project records further supported this possibility.

Although no impacts to on-site wetlands are proposed as part of the planned security upgrades, the presence of Pine Barrens treefrog may affect the proposed activities in the adjacent pine-oak woodland. No Pine Barrens treefrogs were encountered during the preliminary site inspection, but the presence of Pine Barrens treefrog could only be determined through an active survey at the appropriate season.

Surveys for Pine Barrens treefrog were conducted on the evenings of June 15, 22, and 30 during the peak calling period for this species. Active listening, as well as the use of a taped call of Pine Barrens treefrog, were employed at several locations around the perimeter of the emergent/scrub-shrub wetlands. Appropriate survey conditions have been suggested by the NJDEP to be warm, (70 °F+), humid or rainy nights in May and June. As a result, sampling of the wetland was conducted between 8:30 and 10:00 in the evening with temperatures ranging from 73.1 to 80.6 °F, humidity from 66 to 84 percent, wind speeds less than 10 miles per hour, and on the former two dates, during occasional showers.

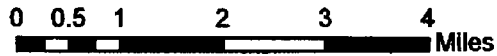
In addition, a control population of Pine Barrens treefrogs was visited immediately following each sampling evening to determine conditions were appropriate for survey. The control population chosen for this survey is located in an emergent/scrub-shrub wetland south of Webbs Mill Branch, near milepost 20 on County Route 539 within Greenwood Forest Wildlife Management Area, Lacey Township (Figure 8). Oyster Creek Generating Station is located approximately 11 miles southeast of the control population.

Pine Barrens treefrogs were not found on any of the three survey nights at the Oyster Creek Generating Station. Green frogs were heard from this wetland on each sampling date while bullfrog was identified by call on June 22 only. In contrast, at the control site near Webbs Mill Branch, numerous Pine Barrens treefrogs were heard spontaneously calling on each sampling evening. Green frog and carpenter frog were also heard at the control site. Based on the appropriate weather conditions, the lack of a response at the study area, and results at the control site on the same evenings, it can be concluded that Pine Barrens treefrog does not inhabit the study area at the Oyster Creek Generating Station.



**Legend**

- Streams
- Lakes
- Local Roads
- Major Roads
- Municipal Boundary
- County Boundary



**FIGURE 8: PINE BARRENS TREEFROG CONTROL SITE**

Relative Locations of Control Site,  
Webbs Mill Branch, County Route 539  
and  
Study Area,  
Oyster Creek Generating Station  
both Township of Lacey  
Ocean County, New Jersey

**EcolSciences, Inc.**  
Environmental Management & Regulatory Compliance

Date: 7/7/04  
C:\GIS\data\Jobs\04\en04-086\control\_site.mxd

#### IV. CONCLUSION

- EcolSciences conducted a habitat evaluation for threatened and endangered species on a portion of the site of the Oyster Creek Generating Station, Lacey Township, Ocean County. Planned National Security upgrades around the generating station have necessitated a review of possible impacts to potential threatened and endangered species habitat in undeveloped portions of the facility.
- According to the Natural Heritage Database and Landscape Project (Version 2.0) mapping as interpreted by the NJDEP Natural Heritage Program, the State-threatened Pine Barrens treefrog, northern pine snake, wood turtle, barred owl, and Cooper's hawk have been identified as occurring on the site. A review of Landscape Project 2.0 mapping by EcolSciences revealed, however, that only a record of northern pine snake occurs within the area of interest. Based on surrounding land use and existing land cover, EcolSciences determined during the initial site visit on April 28, 2004 that the area of interest is not critical habitat for any of the above species with the possible exception of Pine Barrens treefrog.
- Pine snake habitat mapping prepared for the site following ENSP draft protocol indicates the majority of the area of interest is mapped as preferred habitat. Undeveloped upland habitat within the area of interest, though, is too small in extent to support a sustainable population of northern pine snake. In addition, the area of interest is essentially geographically isolated for terrestrial creatures requiring large territories such as pine snake or wood turtle due to barriers such as the canal and US Route 9.
- Vernal habitat mapping provided by Rutgers' Center for Remote Sensing and Spatial Analysis indicates a single on-site vernal pool that has not been surveyed. This pool coincides with an area that, during the field investigation, was determined to be potential habitat for Pine Barrens treefrog. Although no activities have been proposed in this area, presence of Pine Barrens treefrog may affect adjacent upland habitat, including the area of the proposed parking lot expansion. A survey for Pine Barrens treefrog is therefore necessary.
- EcolSciences conducted a Pine Barrens treefrog survey within the wetlands just north of the discharge canal on the evenings of June 15, 22, and 30 during the height of the calling period for this species. A control site was utilized to confirm conditions were appropriate for sampling on each evening. No Pine Barrens treefrogs were seen or heard at the study area but were spontaneously calling at the control site on the same evenings.
- The study conducted by EcolSciences indicates that no further investigation for threatened and endangered species is warranted for this site.
- The proposed National Security upgrades will not negatively impact threatened and endangered species and as such should be permitted by the NJDEP.

## V. REFERENCES

- New Jersey Department of Environmental Protection (NJDEP). 2002.** Protocols for the establishment of exceptional resource value wetlands pursuant to the Freshwater Wetlands Protection Act (N.J.S.A. 13:9B-1 *et seq.*) based on documentation of state or federal endangered or threatened species.
- NJDEP, Division of Fish and Wildlife (DFW), Endangered and Nongame Species Program (ENSP), 2004.** New Jersey's Landscape Project, Version 2.0.
- NJDEP, DFW, ENSP. 2003.** Northern Pine Snake Habitat Enhancement. New Jersey Division of Fish and Wildlife website. [www.state.nj.us/dep/fgw/pinesnak.htm](http://www.state.nj.us/dep/fgw/pinesnak.htm)
- NJDEP, Office of Information Resources Management (OIRM), Bureau of Geographic Information Systems (BGIS). 1996.** GIS Resource Data, Series 1, Volume 2.
- NJDEP, OIRM, BGIS. 2001.** 1995/97 Land Use/Land Cover, Series 1, Volume 5.
- NJDEP, Office of Natural Lands Management (ONLM). 2004.** NJDEP Natural Heritage Grid Map.
- NJDEP and Rutgers Center of Remote Sensing and Spatial Analysis. 2004.** Mapping New Jersey's Vernal Pools. [www.crssa.rutgers.edu/projects/biodiv/biodiv.htm](http://www.crssa.rutgers.edu/projects/biodiv/biodiv.htm)
- Niles, L.J., M. Valent, P. Winkler and P. Woerner. 2004.** New Jersey's Landscape Project, Version 2.0: New Jersey Department of Environmental Protection, New Jersey Division of Fish and Wildlife, Endangered and Nongame Species Program.
- Robichaud, B., and M. F. Buell. 1973.** Vegetation of New Jersey: A Study of Landscape Diversity. Rutgers University Press, New Brunswick, New Jersey.
- State of New Jersey, Office of Information Technology. 2003.** New Jersey 2002 High Resolution Orthophotography.
- United States Department of Agriculture, Natural Resource Conservation Service. 2001.** Digital Raster Graph Mosaic of Ocean County, New Jersey.
- United States Soil Conservation Service (SCS). 1980.** Soil Survey of Ocean County.

# **ATTACHMENT A**

---

Natural Heritage Program Letter

**EcolSciences, Inc.**

Environmental Management & Regulatory Compliance

RECEIVED

MAY 11 2004

ECOLSCIENCES, INC.



State of New Jersey

Department of Environmental Protection  
 Division of Parks and Forestry  
 Office of Natural Lands Management  
 Natural Heritage Program  
 P.O. Box 404  
 Trenton, NJ 08625-0404  
 Tel. #609-984-1339  
 Fax. #609-984-1427

Bradley M. Campbell  
 Commissioner

James E. McGreevey  
 Governor

May 11, 2004

Daniel Brill  
 EcolSciences, Inc.  
 75 Fleetwood Drive, Suite 250  
 Rockaway, NJ 07866

Re: Oyster Creek Nuclear Generating Station, EN04-086

Dear Mr. Brill:

Thank you for your data request regarding rare species information for the above referenced project site in Lacey Township, Ocean County.

Searches of the Natural Heritage Database and the Landscape Project (Version 2) are based on a representation of the boundaries of your project site in our Geographic Information System (GIS). We make every effort to accurately transfer your project bounds from the topographic map(s) submitted with the Request for Data into our Geographic Information System. We do not typically verify that your project bounds are accurate, or check them against other sources.

We have checked the Natural Heritage Database and the Landscape Project habitat mapping for occurrences of any rare wildlife species or wildlife habitat on the referenced site. Please see Table 1 for species list and conservation status.

Table 1 (on referenced site).

Common Name	Scientific Name	Federal Status	State Status	Grank	Srank
barred owl	<i>Strix varia</i>		T/T	G5	S3B
Cooper's hawk	<i>Accipiter cooperii</i>		T/T	G5	S3B,S4N
dotted skipper	<i>Hesperia attalus slossonae</i>		Special Concern	G3G4T3	S2S3
eastern box turtle	<i>Terrapene carolina</i>		Special Concern	G5	S5B
northern pine snake	<i>Pituophis m. melanoleucus</i>		T	G4T4	S3
pine barrens treefrog	<i>Hyla andersonii</i>		T	G4	S3
wood turtle	<i>Clemmys insculpta</i>		T	G4	S3

We have also checked the Natural Heritage Database and the Landscape Project habitat mapping for occurrences of any rare wildlife species or wildlife habitat within 1/4 mile of the referenced site. Please see Table 2 for species list and conservation status. This table excludes any species listed in Table 1.

Table 2 (additional species within 1/4 mile of referenced site).

Common Name	Scientific Name	Federal Status	State Status	Grank	Srank
black skimmer foraging area	<i>Rynchops niger</i>		E	G5	S1B
black-crowned night-heron foraging habitat	<i>Nycticorax nycticorax</i>		T/S	G5	S3B,S4N
colonial waterbird foraging habitat					
Fowler's toad	<i>Bufo woodhousii fowleri</i>		Special Concern	G5	S4
spotted turtle	<i>Clemmys guttata</i>		Special Concern	G5	S4
tern species foraging habitat					

We have also checked the Natural Heritage Database for occurrences of rare plant species or natural communities. The Natural Heritage Data Base has records for occurrences of *Eupatorium resinosum*, *Pycnanthemum setosum*, *Juncus*



*caesariensis* and *Schizaea pusilla* that may be in the immediate vicinity of the site. The attached list provides more information about these occurrences. Because some species are sensitive to disturbance or sought by collectors, this information is provided to you on the condition that no specific locational data are released to the general public. This is not intended to preclude your submission of this information to regulatory agencies from which you are seeking permits.

Also attached is a list of rare species and natural communities that have been documented from Ocean County. If suitable habitat is present at the project site, these species have potential to be present.

Status and rank codes used in the tables and lists are defined in the attached EXPLANATION OF CODES USED IN NATURAL HERITAGE REPORTS.

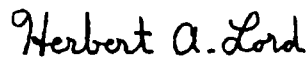
The Natural Heritage Program reviews its data periodically to identify priority sites for natural diversity in the State. Included as priority sites are some of the State's best habitats for rare and endangered species and natural communities. One of these sites is located within or near the areas you have outlined. Please refer to the enclosed Natural Heritage Priority Site Map for the location and boundary of this site. On the back of each Priority Site Map is a report describing the significance of the site.

If you have questions concerning the wildlife records or wildlife species mentioned in this response, we recommend that you visit the interactive I-Map-NJ website at the following URL, <http://www.state.nj.us/dep/gis/imapnj/imapnj.htm> or contact the Division of Fish and Wildlife, Endangered and Nongame Species Program.

PLEASE SEE THE ATTACHED 'CAUTIONS AND RESTRICTIONS ON NHP DATA'.

Thank you for consulting the Natural Heritage Program. The attached invoice details the payment due for processing this data request. Feel free to contact us again regarding any future data requests.

Sincerely,



Herbert A. Lord  
Data Request Specialist

cc: Robert J. Cartica  
Lawrence Niles  
NHP File No. 04-3907472

JUN 2002

OCEAN COUNTY  
RARE SPECIES AND NATURAL COMMUNITIES PRESENTLY RECORDED IN  
THE NEW JERSEY NATURAL HERITAGE DATABASE

NAME	COMMON NAME	FEDERAL STATUS	STATE STATUS	REGIONAL STATUS	GRANK	SRANK
ACCIPITER COOPERII	COOPER'S HAWK		T/T		G5	S3B, S4N
AMBYSTOMA TIGRINUM TIGRINUM	EASTERN TIGER SALAMANDER		E		G5T5	S2
AMMODRAMUS SAVANNARUM	GRASSHOPPER SPARROW		T/S		G5	S2B
ARDEA HERODIAS	GREAT BLUE HERON		S/S		G5	S2B, S4N
BARTRAMIA LONGICAUDA	UPLAND SANDPIPER		E		G5	S1B
BOTAURUS LENTIGINOSUS	AMERICAN BITTERN		E/S		G4	S2B
BUTEO LINEATUS	RED-SHOULDERED HAWK		E/T		G5	S1B, S2N
CALIDRIS CANUTUS	RED KNOT		T		G5	S3N
CHARADRIUS MELODUS	PIPING PLOVER	LT	E		G3	S1B
CIRCUS CYANEUS	NORTHERN HARRIER		E/U		G5	S1B, S3N
CISTOTHORUS PLATENSIS	SEDGE WREN		E		G5	S1B
CLEMMYS INSCULPTA	WOOD TURTLE		T		G4	S3
CLEMMYS MUHLENBERGII	BOG TURTLE	LT	E		G3	S2
CROTALUS HORRIDUS HORRIDUS	TIMBER RATTLESNAKE		E		G4T4	S2
EGRETTA CAERULEA	LITTLE BLUE HERON		S/S		G5	S2B
EGRETTA THULA	SNOWY EGRET		S/S		G5	S3B, S4N
EGRETTA TRICOLOR	TRICOLORED HERON		INC/S		G5	S3B
ELAPHE GUTTATA GUTTATA	CORN SNAKE		E		G5T5	S1
EUMECES FASCIATUS	FIVE-LINED SKINK		U		G5	S3
FALCO PEREGRINUS	PEREGRINE FALCON		E		G4	S1B, S2N
HALIAEETUS LEUCOCEPHALUS	BALD EAGLE	LT	E		G4	S1B, S2N
HYLA ANDERSONII	PINE BARRENS TREEFROG		E		G4	S3
HYLA CHRYSOSCELIS	COPE'S GRAY TREEFROG		E		G5	S2
IXOBRYCHUS EXILIS	LEAST BITTERN		D/S		G5	S3B
LAMPROPELTIS GETULA GETULA	EASTERN KING SNAKE		SC		G5T5	S3
LATERALLUS JAMAICENSIS	BLACK RAIL		T/T		G4	S2B
LYNX RUFUS	BOBCAT		E		G5	S3
MELANERPES ERYTHROCEPHALUS	RED-HEADED WOODPECKER		T/T		G5	S2B, S2N
NYCTANASSA VIOLACEA	YELLOW-CROWNED NIGHT-HERON		T/T		G5	S2B

Vertebrates

27 JUN 2002

OCEAN COUNTY  
 RARE SPECIES AND NATURAL COMMUNITIES PRESENTLY RECORDED IN  
 THE NEW JERSEY NATURAL HERITAGE DATABASE

NAME	COMMON NAME	FEDERAL STATUS	STATE STATUS	REGIONAL STATUS	GRANK	SRANK
NYCTICORAX NYCTICORAX	BLACK-CROWNED NIGHT-HERON		T/S		G5	S3B, S4N
PANDION HALIAETUS	OSPREY		T/T		G5	S2B
PITUOPHIS MELANOLEUCUS MELANOLEUCUS	NORTHERN PINE SNAKE		T		G4T4	S3
PLEGADIS FALCINELLUS	GLOSSY IBIS		D/S		G5	S3B, S4N
PODILYMBUS PODICEPS	PIED-BILLED GREBE		E/S		G5	S1B, S3N
POOECETES GRAMINEUS	VESPER SPARROW		E		G5	S1B, S2N
RYNCHOPS NIGER	BLACK SKIMMER		E		G5	S1B
STERNA ANTILLARUM	LEAST TERN		E		G4	S1B
STERNA DOUGALLII DOUGALLII	ROSEATE TERN	LE	E		G4T3	SHB
STERNA HIRUNDO	COMMON TERN		D/S		G5	S3B
STERNA NILOTICA	GULL-BILLED TERN		S		G5	S1B
STRIX VARIA	BARRED OWL		T/T		G5	S3B
SYNAPTOMYS COOPERI	SOUTHERN BOG LEMMING		U		G5	S2
*** Ecosystems						
COASTAL DUNE SHRUBLAND	COASTAL DUNE SHRUBLAND				G4	S2?
COASTAL DUNE WOODLAND	COASTAL DUNE WOODLAND				G2G3	S1
MARINE INTERTIDAL GRAVEL/SAND	MARINE INTERTIDAL GRAVEL/SAND				GU	SU
BEACH COMMUNITY	BEACH COMMUNITY					
PINE PLAINS	DWARF PITCH PINE-BLACKJACK OAK PINE PLAINS				G1	S1
PINUS RIGIDA-CALAMOVILFA	PITCH PINE-PINELANDS REEDGRASS				G1	S1
BREVIPILIS SAVANNA	SAVANNA					
*** Invertebrates						
ACRONICTA ALBARUFA	BARRENS DAGGERMOTH				G3G4	SU
AESHNA CLEPSYDRA	MOTTLED DARNER				G4	S2S3
AGROTIS BUCHHOLZI	BUCHHOLZ'S DART				G2	S2
AMBLYSCIRTES VIALIS	ROADSIDE SKIPPER				G5	S2S3

JUN 2002

OCEAN COUNTY  
RARE SPECIES AND NATURAL COMMUNITIES PRESENTLY RECORDED IN  
THE NEW JERSEY NATURAL HERITAGE DATABASE

NAME	COMMON NAME	FEDERAL STATUS	STATE STATUS	REGIONAL STATUS	GRANK	SRANK
APHARETRA DENTATA	A NOCTUID MOTH				G4	S2S3
ATRYTONE AROGOS AROGOS	AROGOS SKIPPER		E		G3G4T1T2	S1
BOLORIA SELENE MYRINA	A SILVER-BORDERED FRITILLARY		T		G5T5	S2
CALLOPHRYS HENRICI	HENRY'S ELFIN				G5	S3S4
CALLOPHRYS HESSELI	HESSEL'S HAIRSTREAK				G3G4	S3S4
CALLOPHRYS IRUS	FROSTED ELFIN		T		G3	S2S3
CALLOPHRYS POLIOS	HOARY ELFIN				G5	S3
CALLOPISTRIA GRANITOSA	GRANITOSA FERN MOTH				G4G5	S2S3
CATOCALA HERODIAS GERHARDI	HERODIAS OR GERHARD'S UNDERWING				G3T3	S3
CATOCALA JAIR SSP 2					G4T4	S3
CELITHEMIS MARTHA	MARTHA'S PENNANT				G4	S3S4
CICINDELA DORSALIS DORSALIS	NORTHEASTERN BEACH TIGER BEETLE	LT	E		G4T2	S1
CICINDELA PATRUELA	A TIGER BEETLE				G3T2T3	S2S3
CONSENTANEA						
CRAMBUS DAECKELLUS	DAECKE'S PYRALID MOTH				G1G3	S1S3
DATANA RANAECEPS	A HAND-MAID MOTH				G3G4	S3S4
ENALLAGMA PICTUM	SCARLET BLUET				G3	S3
ENALLAGMA RECURVATUM	PINE BARRENS BLUET				G3	S3
ERYNNIS PERSIUS PERSIUS	A PERSIUS' DUSKY WING				G5T2T3	SH
EUPHYES BIMACULA	TWO-SPOTTED SKIPPER				G4	S3
FARONTA RUBRIPENNIS	PINK STREAK				G3G4	S3
GLENA PLUMOSARIA					G4	SU
GRAMMIA PLACENTIA	PLACENTIA TIGER MOTH				G4	S1S3
HESPERIA ATTALUS SLOSSONAE	DOTTED SKIPPER				G3G4T3	S2S3
HETAERINA AMERICANA	AMERICAN RUBYSPO				G5	S3
HETEROCAMPA VARIA	A NOTODONTID MOTH				G3G4	S3
HYPOMECEIS BUCHHOLZARIA	BUCHHOLZ'S GRAY				G3G4	S3
ITAME SP 1	A SPANWORM				G3	S3

27 JUN 2002

OCEAN COUNTY  
 RARE SPECIES AND NATURAL COMMUNITIES PRESENTLY RECORDED IN  
 THE NEW JERSEY NATURAL HERITAGE DATABASE

NAME	COMMON NAME	FEDERAL STATUS	STATE STATUS	REGIONAL STATUS	GRANK	SRANK
LIBELLULA AURIPENNIS	GOLDEN-WINGED SKIMMER				G5	S1S2
LIBELLULA AXILENA	BAR-WINGED SKIMMER				G5	S2BS3B, SZ N
LITHOPHANE LEMMERI	LEMMER'S PINION MOTH				G3G4	S2
MACROCHILO SP 1	A NOCTUID MOTH				G3	S3
MEROLONCHE DOLLI	DOLL'S MEROLONCHE				G3G4	S1S3
METARRANTHIS PILOSARIA	COASTAL BOG METARRANTHIS				G3G4	S3S4
METARRANTHIS SP 1	A GEOMETRID MOTH				G3	S2
NEONYMPHA AREOLATA	A SATYR				G4T3T4	S3
SEPTENTRIONALIS						
NICROPHORUS AMERICANUS	AMERICAN BURYING BEETLE	LE	E		G2G3	SH
PONTIA PROTODICE	CHECKERED WHITE		T		G4	S1
PTICHODIS BISTRIGATA	SOUTHERN PTICHODIS				G3	S1S3
PYGARCTIA ABDOMINALIS	YELLOW EDGED PYGARCTIA				G3G4	SH
RICHIA SP 2					G1Q	S1
SEMIOTHISA EREMIATA	THREE-LINED ANGLE MOTH				G4	SU
SPARTINIPHAGA CARTERAE	CARTER'S NOCTUID MOTH				G2G3	S2
ZALE SP 1	PINE BARRENS ZALE				G3G4	S3
ZANCLOGNATHA SP 1					G3G4	S3
ZANCLOGNATHA THERALIS					G4	SH
*** Other types						
BALD EAGLE WINTERING SITE	BALD EAGLE WINTERING SITE				G?	S?
COASTAL HERON ROOKERY	COASTAL HERON ROOKERY				GU	S3
MIGRATORY SHOREBIRD	MIGRATORY SHOREBIRD				G?	S?
CONCENTRATION SITE	CONCENTRATION SITE					
*** Vascular plants						
ALOPECURUS AEQUALIS VAR AEQUALIS	SHORT-AWN MEADOW-FOXTAIL				G5T?	S2

JUN 2002

OCEAN COUNTY  
 RARE SPECIES AND NATURAL COMMUNITIES PRESENTLY RECORDED IN  
 THE NEW JERSEY NATURAL HERITAGE DATABASE

NAME	COMMON NAME	FEDERAL STATUS	STATE STATUS	REGIONAL STATUS	GRANK	SRANK
AMARANTHUS PUMILUS	SEABEACH AMARANTH	LT	E		G2	S1
AMIANTHIUM MUSCITOXICUM	FLY POISON				G4G5	S2
ARETHUSA BULBOSA	DRAGON MOUTH				G4	S2
ARISTIDA DICHOTOMA VAR CURTISSII	CURTISS' THREE-AWN GRASS				G5T5	S2
ARISTOLOCHIA SERPENTARIA	VIRGINIA SNAKEROOT				G4	S3
ARTEMISIA CAMPESTRIS SSP CAUDATA	BEACH WORMWOOD				G5T5	S2
ASCLEPIAS LANCEOLATA	SMOOTH ORANGE MILKWEED				G5	S2
ASCLEPIAS RUBRA	RED MILKWEED			LP	G4G5	S2
ASTER RADULA	LOW ROUGH ASTER		E		G5	S1
BUCHNERA AMERICANA	BLUEHEARTS				G5?	SX
CACALIA ATRIPLICIFOLIA	PALE INDIAN PLANTAIN		E		G4G5	S1
CALAMOVILFA BREVIPILIS	PINE BARREN REEDGRASS			LP	G4	S4
CARDAMINE LONGII	LONG'S BITTERCRESS		E		G3	SH
CAREX BARRATTII	BARRATT'S SEDGE			LP	G4	S4
CAREX MITCHELLIANA	MITCHELL'S SEDGE				G3G4	S2
CAREX PALLESCENS	PALE SEDGE				G5	S2
CAREX WILLDENOWII VAR WILLDENOWII	WILLDENOW'S SEDGE				G5T5	S2
CIRSIUM VIRGINIANUM	VIRGINIA THISTLE		E		G3	S1
CLITORIA MARIANA	BUTTERFLY-PEA		E		G5	S1
COREMA CONRADII	BROOM CROWBERRY		E	LP	G4	S1
COREOPSIS ROSEA	ROSE-COLOR COREOPSIS			LP	G3	S2
CROTON WILLDENOWII	ELLIPTICAL RUSHFOIL			LP	G5	S2
DESMODIUM PAUCIFLORUM	FEW-FLOWER TICK-TREFOIL		E		G5	S1
ELEOCHARIS HALOPHILA	SALT-MARSH SPIKE-RUSH				G4	S2
ELEOCHARIS TORTILIS	TWISTED SPIKE-RUSH		E		G5	S1
ERIOCAULON PARKERI	PARKER'S PIPEWORT				G3	S2
ERIOPHORUM TENELLUM	ROUGH COTTON-GRASS		E		G5	S1

27 JUN 2002

OCEAN COUNTY  
 RARE SPECIES AND NATURAL COMMUNITIES PRESENTLY RECORDED IN  
 THE NEW JERSEY NATURAL HERITAGE DATABASE

NAME	COMMON NAME	FEDERAL STATUS	STATE STATUS	REGIONAL STATUS	GRANK	SRANK
ERYNGIUM AQUATICUM VAR AQUATICUM	MARSH RATTLESNAKE-MASTER				G4T4	S3
EUPATORIUM RESINOSUM	PINE BARREN BONESET		E	LP	G3	S2
FIMBRISTYLIS CAROLINIANA	CAROLINA FIMBRY				G4	S2
FRAXINUS PROFUNDA	PUMPKIN ASH		E		G4	S1
FUIRENA SQUARROSA	HAIRY UMBRELLA-SEDGE				G4G5	S3
GALACTIA VOLUBILIS	DOWNY MILK-PEA		E		G5	SH
GENTIANA AUTUMNALIS	PINE BARREN GENTIAN			LP	G3	S3
GLAUX MARITIMA	SEA-MILKWORT		E		G5	SX.1
GNAPHALIUM HELLERI	SMALL EVERLASTING		E		G4G5T3?	SH
HELONIAS BULLATA	SWAMP-PINK	LT	E	LP	G3	S3
HONCKENYA PEPLOIDES VAR ROBUSTA	SEABEACH SANDWORT				G5T4	S2
HOTTONIA INFLATA	FEATHERFOIL		E		G4	S1
HOUSTONIA LONGIFOLIA	LONG-LEAF SUMMER BLUET				G4G5	SH
JEFFERSONIA DIPHYLLO	TWINLEAF		E		G5	S1
JUNCUS CAESARIENSIS	NEW JERSEY RUSH		E	LP	G2	S2
JUNCUS GREENEI	GREENE'S RUSH				G5	S2
JUNCUS TORREYI	TORREY'S RUSH		E		G5	S1
LIMOSELLA SUBULATA	AWL-LEAF MUDWORT		E		G4G5	S1
LINUM INTERCURSUM	SANDPLAIN FLAX		E		G4	S1
LISTERA AUSTRALIS	SOUTHERN TWAYBLADE			LP	G4	S2
LOBELIA CANBYI	CANBY'S LOBELIA			LP	G4	S3
LUDWIGIA BREVIPES	TUCKER'S ISLAND PRIMROSE-WILLOW				G4G5	SX.1
LUZULA ACUMINATA	HAIRY WOOD-RUSH		E		G5T4T5	S2
MELANTHIUM VIRGINICUM	VIRGINIA BUNCHFLOWER		E		G5	S1
MÜHLENBERGIA TORREYANA	PINE BARREN SMOKE GRASS			LP	G3	S3
MYRIOPHYLLUM TENELLUM	SLENDER WATER-MILFOIL		E		G5	S1
MYRIOPHYLLUM VERTICILLATUM	WHORLED WATER-MILFOIL		E		G5	SH

JUN 2002

OCEAN COUNTY  
RARE SPECIES AND NATURAL COMMUNITIES PRESENTLY RECORDED IN  
THE NEW JERSEY NATURAL HERITAGE DATABASE

NAME	COMMON NAME	FEDERAL STATUS	STATE STATUS	REGIONAL STATUS	GRANK	SRANK
NARTHECIUM AMERICANUM	BOG ASPHODEL	C	E	LP	G2	S2
NYMPHOIDES CORDATA	FLOATINGHEART			LP	G5	S3
OENOTHERA HUMIFUSA	SEA-BEACH EVENING-PRIMROSE		E		G5	S2
ONOSMODIUM VIRGINIANUM	VIRGINIA FALSE-GROMWELL		E		G4	S1
PASPALUM DISSECTUM	MUDBANK CROWN GRASS				G4?	S2
PHORADENDRON LEUCARPUM	AMERICAN MISTLETOE			LP	G5	S2
PITYOPSIS FALCATA	SICKLE-LEAF GOLDEN-ASTER			LP	G3G4	S3
PLANTAGO MARITIMA VAR JUNCOIDES	SEASIDE PLANTAIN				G5T5	S2
PLANTAGO PUSILLA	DWARF PLANTAIN		E		G5	SH
POLYGONUM GLAUCUM	SEA-BEACH KNOTWEED		E		G3	S1
PRENANTHES AUTUMNALIS	PINE BARREN RATTLESNAKE-ROOT			LP	G4G5	S2
PRUNUS ANGUSTIFOLIA	CHICKASAW PLUM		E		G5T4T5	S2
PUCCINELLIA FASCICULATA	SALTMARSH ALKALI GRASS				G3G5	S2
PYCNANTHEMUM SETOSUM	AWNED MOUNTAIN-MINT				G3?	S3
RANUNCULUS CYMBALARIA	SEASIDE BUTTERCUP		E		G5	SH
RHODODENDRON ATLANTICUM	DWARF AZALEA		E		G4G5	S1
RHYNCHOSPORA CEPHALANTHA	LARGE-HEAD BEAKED-RUSH			LP	G5	S3
RHYNCHOSPORA GLOBULARIS	COARSE GRASS-LIKE BEAKED-RUSH		E		G5?	S1
RHYNCHOSPORA INUNDATA	SLENDER HORNED-RUSH			LP	G3G4	S2
RHYNCHOSPORA KNIESKERNII	KNIESKERN'S BEAKED-RUSH	LT	E	LP	G1	S1
RHYNCHOSPORA MICROCEPHALA	SMALL-HEAD BEAKED-RUSH		E		G5T5	S1
RHYNCHOSPORA NITENS	SHORT-BEAKED BALD-RUSH				G4?	S2
RHYNCHOSPORA PALLIDA	PALE BEAKED-RUSH				G3	S3
RUBUS RECURVICAULIS	BLANCHARD'S DEWBERRY				G4?	S1.1
RUMEX HASTATULUS	ENGELMANN'S SORREL				G5	SH
SABATIA CAMPANULATA	SLENDER MARSH-PINK				G5	S3
SABATIA DODECANDRA VAR DODECANDRA	LARGE MARSH-PINK				G5?T4T5	S2
SCHIZAEA PUSILLA	CURLY GRASS FERN			LP	G3	S3



27 JUN 2002

OCEAN COUNTY  
 RARE SPECIES AND NATURAL COMMUNITIES PRESENTLY RECORDED IN  
 THE NEW JERSEY NATURAL HERITAGE DATABASE

NAME	COMMON NAME	FEDERAL STATUS	STATE STATUS	REGIONAL STATUS	GRANK	SRANK
SCHWALBEA AMERICANA	CHAFFSEED	LE	E	LP	G2	S1
SCIRPUS LONGII	LONG'S WOOLGRASS		E	LP	G2	S2
SCIRPUS MARITIMUS	SALTMARSH BULRUSH		E		G5	SH
SCLERIA MINOR	SLENDER NUT-RUSH			LP	G4	S4
SOLIDAGO STRICTA	WAND-LIKE GOLDENROD			LP	G5	S3
SOLIDAGO TARDA	LATE GOLDENROD				G4?Q	S3
SPIRANTHES LACINIATA	LACE-LIP LADIES'-TRESSES		E		G4G5	S1
SPIRANTHES ODORATA	FRAGRANT LADIES'-TRESSES				G5	S2
STYLISMA PICKERINGII VAR PICKERINGII	PICKERING'S MORNING-GLORY		E	LP	G4T2T3	S1
TIPULARIA DISCOLOR	CRANEFLY ORCHID				G4G5	S3
TRIDENS FLAVUS VAR CHAPMANII	CHAPMAN'S REDTOP		E		G5T7	SH
TRIGLOCHIN MARITIMA	SEASIDE ARROW-GRASS		E		G5	S1
UTRICULARIA BIFLORA	TWO-FLOWER BLADDERWORT		E		G5	S1
UTRICULARIA MINOR	LESSER BLADDERWORT		E		G5	S1
UTRICULARIA PURPUREA	PURPLE BLADDERWORT			LP	G5	S3
UVULARIA PUBERULA VAR NITIDA	PINE BARREN BELLWORT		E		G5T3?	S2
VERBENA SIMPLEX	NARROW-LEAF VERVAIN		E		G5	S1
XYRIS FIMBRIATA	FRINGED YELLOW-EYED-GRASS		E		G5	S1
ZIGADENUS LEIMANTHOIDES	DEATH-CAMUS		E		G4Q	S1

201 Records Processed

## CAUTIONS AND RESTRICTIONS ON NATURAL HERITAGE DATA

The quantity and quality of data collected by the Natural Heritage Program is dependent on the research and observations of many individuals and organizations. Not all of this information is the result of comprehensive or site-specific field surveys. Some natural areas in New Jersey have never been thoroughly surveyed. As a result, new locations for plant and animal species are continuously added to the database. Since data acquisition is a dynamic, ongoing process, the Natural Heritage Program cannot provide a definitive statement on the presence, absence, or condition of biological elements in any part of New Jersey. Information supplied by the Natural Heritage Program summarizes existing data known to the program at the time of the request regarding the biological elements or locations in question. They should never be regarded as final statements on the elements or areas being considered, nor should they be substituted for on-site surveys required for environmental assessments. The attached data is provided as one source of information to assist others in the preservation of natural diversity.

This office cannot provide a letter of interpretation or a statement addressing the classification of wetlands as defined by the Freshwater Wetlands Act. Requests for such determination should be sent to the DEP Land Use Regulation Program, P.O. Box 401, Trenton, NJ 08625-0401.

The Landscape Project was developed by the Division of Fish & Wildlife, Endangered and Nongame Species Program to map critical habitat for rare animal species. Some of the rare species data in the Landscape Project is in the Natural Heritage Database, while other records were obtained from other sources. Natural Heritage Database response letters will list all species (if any) found during a search of the Landscape Project. However, any reports that are included with the response letter will only reference specific records if they are in the Natural Heritage Database. This office cannot answer any inquiries about the Landscape Project. All questions should be directed to the DEP Division of Fish and Wildlife, Endangered and Nongame Species Program, P.O. Box 400, Trenton, NJ 08625-0400.

**This cautions and restrictions notice must be included whenever information provided by the Natural Heritage Database is published.**



NJ Department of Environmental Protection  
Division of Parks and Forestry

Natural Lands Management

MAY 2004

IMMEDIATE VICINITY OF PROJECT SITE  
BASED ON SEARCH OF NATURAL HERITAGE DATABASE  
RARE SPECIES AND NATURAL COMMUNITIES PRESENTLY RECORDED IN  
THE NEW JERSEY NATURAL HERITAGE DATABASE

4E	COMMON NAME	FEDERAL STATUS	STATE STATUS	REGIONAL STATUS	GRANK	SRANK	DATE OBSERVED	IDENT.	LOCATION
Vascular plants									
PATORIUM RESINOSUM	PINE BARREN BONESET		E	LP	G3	S2	1993-08-??	Y	EAST SIDE OF ROUTE 9 JUST NORTH OF BAY PARKWAY. IN RECOVERING CRANBERRY BOG ON SOUTH BANK OF OYSTER CREEK.
ICUS CAESARIENSIS	NEW JERSEY RUSH		E	LP	G2	S2	1922-09-??	Y	OYSTER CREEK ALONG TUCKERTON RR, NW [OF] WARETOWN.
INANTHEMUM SETOSUM	AWNED MOUNTAIN-MINT				G3?	S3	1993-??-??	Y	EAST SIDE OF ROUTE 9, JUST NORTH OF BAY PARKWAY, SOUTH OF OYSTER CREEK.
HIZAEA PUSILLA	CURLY GRASS FERN			LP	G3	S3	1915-07-10	Y	BY OYSTER CREEK NW ALONG TUCKERTON RR FROM WARETOWN.

Records Processed

# Frequently Asked Questions

## About Natural Heritage Priority Sites

---

### **What are Natural Heritage Priority Sites?**

Through its Natural Heritage Database, the Office of Natural Lands Management (ONLM) identifies critically important areas to conserve New Jersey's biological diversity. The database provides detailed, up-to-date information on rare species and natural communities to planners, developers, and conservation agencies for use in resource management, environmental impact assessment, and both public and private land protection efforts.

Using the database, ONLM has identified Natural Heritage Priority Sites that represent some of the best remaining habitat for rare species and exemplary natural communities in the state. These areas should be considered to be top priorities for the preservation of biological diversity in New Jersey. If these sites become degraded or destroyed, we may lose some of the unique components of our natural heritage.

ONLM has identified 410 priority sites over the course of more than 10 years. We have received assistance from many partner individuals and agencies over this time. The Nature Conservancy and the DEP Endangered and Nongame Species Program have provided key information or assisted with the delineation of a number of the sites.

### **How are Natural Heritage Priority Site maps used in conservation of biological diversity?**

Natural Heritage Priority Site maps are used by individuals and agencies concerned with the protection and management of land. The maps have been used by municipalities preparing natural resource inventories; public and private conservation organizations preparing open space acquisition goals; land developers and consultants identifying environmentally sensitive lands; and public and private landowners developing land management plans.

Natural Heritage Priority Sites contain some of the best and most viable occurrences of endangered and threatened species and natural communities, but they do not cover all known habitat for endangered and threatened species in New Jersey. If information is needed on whether or not

endangered or threatened species have been documented from a particular piece of land, a Natural Heritage Database search can be requested by contacting the Office of Natural Lands Management at the address below.

### **What do the boundaries of the sites contain?**

The boundaries of each Natural Heritage Priority Site are drawn to encompass critical habitat for the rare species or natural communities. Often the boundaries extend to include additional buffer lands that should be managed to protect the habitat. A justification for the boundary is provided for each site. The term "primary bounds" is sometimes used to refer to boundaries enclosing critical habitat. The term "secondary bounds" is sometimes used to refer to boundaries enclosing additional buffer. In maps where both primary and secondary boundaries are described, only the outermost boundary is provided in the mapping.

### **What is the background map that the sites are drawn upon?**

The sites are portrayed on background maps produced from a digital copy of the U.S. Geological Survey 7.5 minute topographic maps. The background maps contain topographic lines as well as streams, lakes, roads, towns and place names. These background maps do not always reflect recent changes in land development. Some may be more than 20 years old. Some sites appear to be shifted in position against this topo map. This shift is due to the fact that most sites have been digitized against a background of rectified aerial photography, and some of the digitized USGS topo maps do not align with this photography.

### **What do "public lands" depict on the maps?**

The "public lands" shaded on these maps are state-owned open space lands that have been digitized as a GIS coverage by the state Green Acres Program. This information is provided to show patterns of State land ownership in the vicinity of the Priority Site. The public lands are areas such as State Parks and Forests, Wildlife Management Areas, and Natural Lands Trust preserves. They do not currently include lands owned by other state agencies, federal, county or municipal governments

or nonprofit conservation organizations. This GIS coverage is constantly being updated, and therefore future editions of the maps will likely contain additional public lands that are not currently mapped as such.

### **What is the biodiversity significance rank and how is it used?**

Each site is ranked according to its significance for biological diversity using a scale developed by The Nature Conservancy and the network of Natural Heritage Programs. The ranks can be used to distinguish between sites that are of global significance for conservation of biological diversity vs. those that are of state significance. The scale ranges from B1 to B5 with sites ranked B1-B3 generally being of global significance and sites ranked B4-B5 being of state significance. The specific definitions for each rank are as follows:

**B1 - Outstanding significance**, generally the "last of the least" in the world, such as the only known occurrence of any element (species or natural community), the best or an excellent occurrence of an element ranked critically imperiled globally, or a concentration (4+) of good or excellent occurrences of elements that are imperiled or critically imperiled globally. The site should be viable and defensible for the elements or ecological processes contained.

**B2 - Very high significance**, such as the most outstanding occurrence of any natural community. Also includes areas containing other occurrences of elements that are critically imperiled globally, a good or excellent occurrence of an element that is imperiled globally, an excellent occurrence of an element that is rare globally, or a concentration (4+) of good occurrences of globally rare elements or viable occurrences of globally imperiled elements.

**B3 - High significance**, such as any other viable occurrence of an element that is globally imperiled, a good occurrence of a globally rare element, an excellent occurrence of any natural community, or a concentration (4+) of good or excellent occurrences of elements that are critically imperiled in the State.

**B4 - Moderate significance**, such as a viable occurrence of a globally rare element, a good occurrence of any natural community, a good or excellent occurrence or only viable state occurrence of an element that is critically imperiled in the State, an excellent occurrence of an element that is imperiled in the State, or a concentration (4+) of good occurrences of elements that are imperiled in the State or excellent occurrences of

elements that are rare in the State.

**B5 - Of general biodiversity interest.**

### **How can I obtain Natural Heritage Priority Site maps for an area of interest to me?**

Natural Heritage Priority Site hard copy maps can be obtained by submitting a written request accompanied by a check or money order made payable to the Office of Natural Lands Management at the following address:

Office of Natural Lands Management  
P.O. Box 404  
Trenton, NJ 08625-0404  
Phone: 609-984-1339; Fax: 609-984-1427

Individual 8.5" X 11" maps are available at the following rate:

1 - 10 site maps & reports:	\$1.50/site
11 - 20 site maps & reports:	\$1.00/site
> 20 sites:	\$0.50/site

### **Digital GIS Coverage of Natural Heritage Priority Sites**

A digital version of the ArcView GIS file of Natural Heritage Priority Sites is also available. The zipped version of the file is approximately 1 MB in size. The 2001 version of Natural Heritage Priority Sites will be emailed upon request. The 1999 version of the digital files can be obtained on the internet at the following address:  
<http://www.state.nj.us/dep/gis/> -Click on "GIS Data Downloads" and then "Select a data layer" and then "Natural Heritage Priority Sites". There is no charge for emailing or downloading the GIS data.

### **How often are the maps updated?**

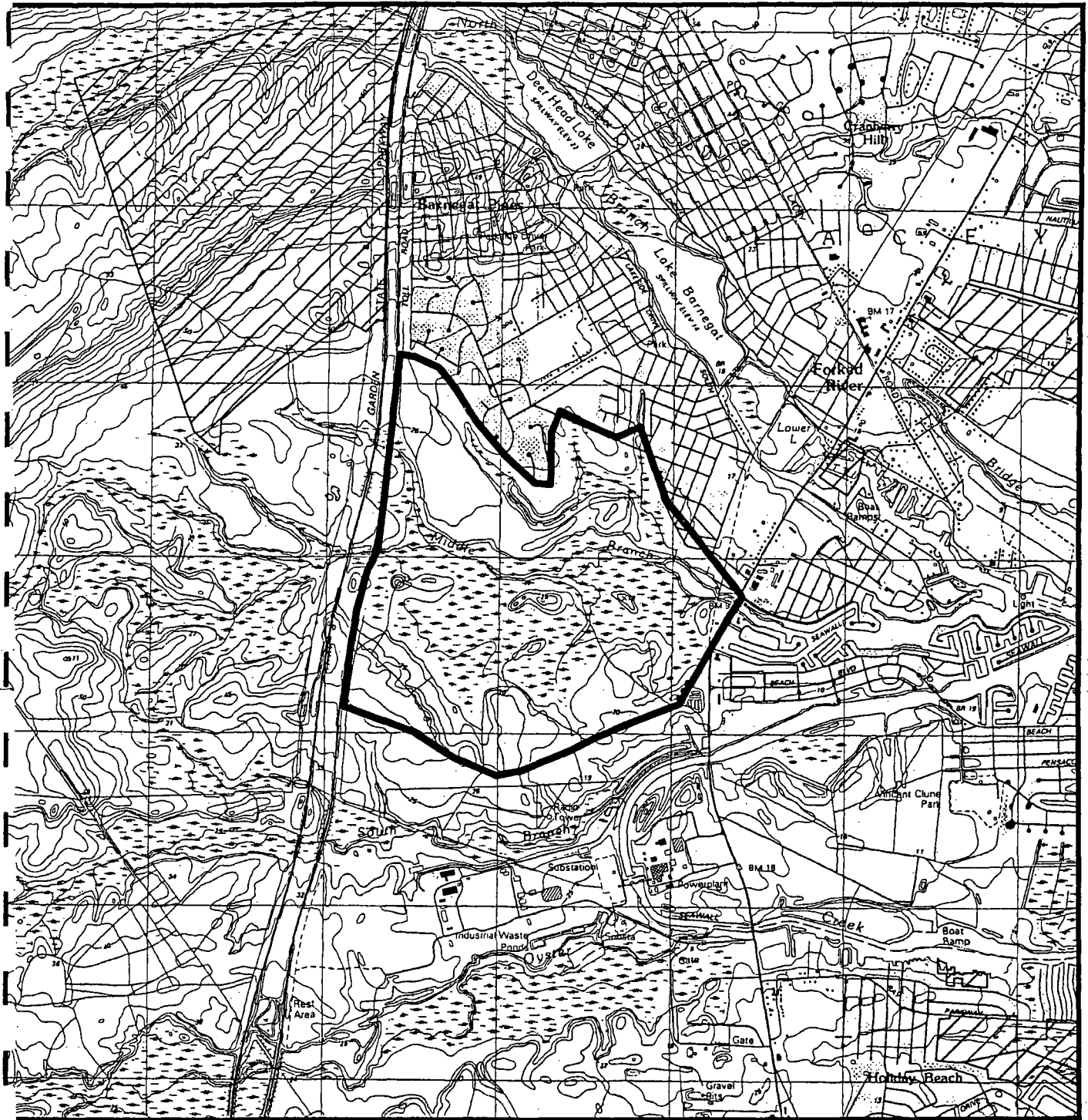
The Natural Heritage Priority Site information is constantly being updated in the Natural Heritage Database. A new edition of the maps will be made available after significant revisions or additions to the Database.

April 9, 2002



NJ Department of Environmental Protection  
Division of Parks and Forestry

Natural Lands Management



Natural Heritage Priority Site  
**Middle Branch Forked River**  
 Ocean County

Natural Heritage Priority Site  
**Middle Branch Forked River**

*Locational Information*

Quad Name: Forked River  
County: Ocean  
Municipality: Lacey Twp

*Description of Site*

Open wetlands adjacent to pine barren stream through Atlantic white cedar swamp.

*Boundary Justification*

Boundaries include wetland habitat for rare plant species plus undeveloped uplands in the drainage basin east of the Garden State Parkway. With additional field work, bounds may be expanded upstream west of the Parkway.

*Biodiversity Rank* **B2**

Several globally rare and State listed plant species.

## EXPLANATIONS OF CODES USED IN NATURAL HERITAGE REPORTS

### FEDERAL STATUS CODES

The following U.S. Fish and Wildlife Service categories and their definitions of endangered and threatened plants and animals have been modified from the U.S. Fish and Wildlife Service (F.R. Vol. 50 No. 188; Vol. 61, No. 40; F.R. 50 CFR Part 17). Federal Status codes reported for species follow the most recent listing.

- LE Taxa formally listed as endangered.
- LT Taxa formally listed as threatened.
- PE Taxa already proposed to be formally listed as endangered.
- PT Taxa already proposed to be formally listed as threatened.
- C Taxa for which the Service currently has on file sufficient information on biological vulnerability and threat(s) to support proposals to list them as endangered or threatened species.
- S/A Similarity of appearance species.

### STATE STATUS CODES

Two animal lists provide state status codes after the Endangered and Nongame Species Conservation Act of 1973 (NSSA 23:2A-13 et. seq.): the list of endangered species (N.J.A.C. 7:25-4.13) and the list defining status of indigenous, nongame wildlife species of New Jersey (N.J.A.C. 7:25-4.17(a)). The status of animal species is determined by the Nongame and Endangered Species Program (ENSP). The state status codes and definitions provided reflect the most recent lists that were revised in the New Jersey Register, Monday, June 3, 1991.

- D Declining species—a species which has exhibited a continued decline in population numbers over the years.
- E Endangered species—an endangered species is one whose prospects for survival within the state are in immediate danger due to one or many factors – a loss of habitat, over exploitation, predation, competition, disease. An endangered species requires immediate assistance or extinction will probably follow.
- EX Extirpated species—a species that formerly occurred in New Jersey, but is not now known to exist within the state.
- I Introduced species—a species not native to New Jersey that could not have established itself here without the assistance of man.
- INC Increasing species—a species whose population has exhibited a significant increase, beyond the normal range of its life cycle, over a long term period.
- T Threatened species—a species that may become endangered if conditions surrounding the species begin to or continue to deteriorate.
- P Peripheral species—a species whose occurrence in New Jersey is at the extreme edge of its present natural range.
- S Stable species—a species whose population is not undergoing any long-term increase/decrease within its natural cycle.
- U Undetermined species—a species about which there is not enough information available to determine the status.

Status for animals separated by a slash(/) indicate a dual status. First status refers to the state breeding population, and the second status refers to the migratory or winter population.



Plant taxa listed as endangered are from New Jersey's official Endangered Plant Species List N.J.S.A. 131B-15.151 et seq.

E Native New Jersey plant species whose survival in the State or nation is in jeopardy.

#### REGIONAL STATUS CODES FOR PLANTS

LP Indicates taxa listed by the Pinelands Commission as endangered or threatened within their legal jurisdiction. Not all species currently tracked by the Pinelands Commission are tracked by the Natural Heritage Program. A complete list of endangered and threatened Pineland species is included in the New Jersey Pinelands Comprehensive Management Plan.

#### EXPLANATION OF GLOBAL AND STATE ELEMENT RANKS

The Nature Conservancy has developed a ranking system for use in identifying elements (rare species and natural communities) of natural diversity most endangered with extinction. Each element is ranked according to its global, national, and state (or subnational in other countries) rarity. These ranks are used to prioritize conservation work so that the most endangered elements receive attention first. Definitions for element ranks are after The Nature Conservancy (1982: Chapter 4, 4.1-1 through 4.4.1.3-3).

#### GLOBAL ELEMENT RANKS

- G1 Critically imperiled globally because of extreme rarity (5 or fewer occurrences or very few remaining individuals or acres) or because of some factor(s) making it especially vulnerable to extinction.
- G2 Imperiled globally because of rarity (6 to 20 occurrences or few remaining individuals or acres) or because of some factor(s) making it very vulnerable to extinction throughout its range.
- G3 Either very rare and local throughout its range or found locally (even abundantly at some of its locations) in a restricted range (e.g., a single western state, a physiographic region in the East) or because of other factors making it vulnerable to extinction throughout its range; with the number of occurrences in the range of 21 to 100.
- G4 Apparently secure globally; although it may be quite rare in parts of its range, especially at the periphery.
- G5 Demonstrably secure globally; although it may be quite rare in parts of its range, especially at the periphery.
- GH Of historical occurrence throughout its range i.e., formerly part of the established biota, with the expectation that it may be rediscovered.
- GU Possibly in peril range-wide but status uncertain; more information needed.
- GX Believed to be extinct throughout range (e.g., passenger pigeon) with virtually no likelihood that it will be rediscovered.
- G? Species has not yet been ranked.

#### STATE ELEMENT RANKS

- S1 Critically imperiled in New Jersey because of extreme rarity (5 or fewer occurrences or very few remaining individuals or acres). Elements so ranked are often restricted to very specialized conditions or habitats and/or restricted to an extremely small geographical area of the state. Also included are elements which were formerly more abundant, but because of habitat destruction or some other critical factor of its biology, they have been demonstrably reduced in abundance. In essence, these are elements for which, even with intensive searching, sizable additional occurrences are unlikely to be discovered.

- S2 Imperiled in New Jersey because of rarity (6 to 20 occurrences). Historically many of these elements may have been more frequent but are now known from very few extant occurrences, primarily because of habitat destruction. Diligent searching may yield additional occurrences.
- S3 Rare in state with 21 to 100 occurrences (plant species in this category have only 21 to 50 occurrences). Includes elements which are widely distributed in the state but with small populations/acreage or elements with restricted distribution, but locally abundant. Not yet imperiled in state but may soon be if current trends continue. Searching often yields additional occurrences.
- S4 Apparently secure in state, with many occurrences.
- S5 Demonstrably secure in state and essentially ineradicable under present conditions.
- SA Accidental in state, including species (usually birds or butterflies) recorded once or twice or only at very great intervals, hundreds or even thousands of miles outside their usual range; a few of these species may even have bred on the one or two occasions they were recorded; examples include European strays or western birds on the East Coast and vice-versa.
- SE Elements that are clearly exotic in New Jersey including those taxa not native to North America (introduced taxa) or taxa deliberately or accidentally introduced into the State from other parts of North America (adventive taxa). Taxa ranked SE are not a conservation priority (viable introduced occurrences of G1 or G2 elements may be exceptions).
- SH Elements of historical occurrence in New Jersey. Despite some searching of historical occurrences and/or potential habitat, no extant occurrences are known. Since not all of the historical occurrences have been field surveyed, and unsearched potential habitat remains, historically ranked taxa are considered possibly extant, and remain a conservation priority for continued field work.
- SP Element has potential to occur in New Jersey, but no occurrences have been reported.
- SR Elements reported from New Jersey, but without persuasive documentation which would provide a basis for either accepting or rejecting the report. In some instances documentation may exist, but as of yet, its source or location has not been determined.
- SRF Elements erroneously reported from New Jersey, but this error persists in the literature.
- SU Elements believed to be in peril but the degree of rarity uncertain. Also included are rare taxa of uncertain taxonomical standing. More information is needed to resolve rank.
- SX Elements that have been determined or are presumed to be extirpated from New Jersey. All historical occurrences have been searched and a reasonable search of potential habitat has been completed. Extirpated taxa are not a current conservation priority.
- SXC Elements presumed extirpated from New Jersey, but native populations collected from the wild exist in cultivation.
- SZ Not of practical conservation concern in New Jersey, because there are no definable occurrences, although the taxon is native and appears regularly in the state. An SZ rank will generally be used for long distance migrants whose occurrences during their migrations are too irregular (in terms of repeated visitation to the same locations), transitory, and dispersed to be reliably identified, mapped and protected. In other words, the migrant regularly passes through the state, but enduring, mappable element occurrences cannot be defined.

Typically, the SZ rank applies to a non-breeding population (N) in the state - for example, birds on migration. An SZ rank may in a few instances also apply to a breeding population (B), for example certain lepidoptera which regularly die out every year with no significant return migration.

Although the SZ rank typically applies to migrants, it should not be used indiscriminately. Just because a species is on migration does not mean it receives an SZ rank. SZ will only apply when the migrants occur in an irregular, transitory and dispersed manner.

- B** Refers to the breeding population of the element in the state.
- N** Refers to the non-breeding population of the element in the state.
- T** Element ranks containing a "T" indicate that the infraspecific taxon is being ranked differently than the full species. For example *Stachys palustris* var. *homotricha* is ranked "G5T? SH" meaning the full species is globally secure but the global rarity of the var. *homotricha* has not been determined; in New Jersey the variety is ranked historic.
- Q** Elements containing a "Q" in the global portion of its rank indicates that the taxon is of questionable, or uncertain taxonomical standing, e.g., some authors regard it as a full species, while others treat it at the subspecific level.
- .1** Elements documented from a single location.

Note: To express uncertainty, the most likely rank is assigned and a question mark added (e.g., G2?). A range is indicated by combining two ranks (e.g., G1G2, S1S3).

#### IDENTIFICATION CODES

These codes refer to whether the identification of the species or community has been checked by a reliable individual and is indicative of significant habitat.

- Y** Identification has been verified and is indicative of significant habitat.
- BLANK** Identification has not been verified but there is no reason to believe it is not indicative of significant habitat.
- ?** Either it has not been determined if the record is indicative of significant habitat or the identification of the species or community may be confusing or disputed.

# **ATTACHMENT B**

---

Qualifications of Preparers

**EcolSciences, Inc.**

Environmental Management & Regulatory Compliance

# **ECOLSCIENCES, INC.**

## **CORPORATE HISTORY**

EcolSciences, Inc., was founded in 1973 in response to the growing need for responsible environmental planning, as mandated by NEPA, The National Environmental Policy Act. EcolSciences specializes in performing environmental investigations relating to permit acquisition and regulatory compliance, demonstration of "due diligence", waste management, impact analysis, mitigation and remediation. EcolSciences' strength is a proficiency in current environmental and waste management laws, regulations, and policies, coupled with a practical problem-solving approach to analyzing the environmental consequences of projects.

During more than twenty years, EcolSciences has successfully completed more than 3,000 studies for private, quasi-public and public clients. EcolSciences has represented many of the country's leading industries, corporations, developers, and financial institutions including AT&T, American Cyanamid Company, Merck, Johnson & Johnson, Hartz Mountain Industries, Trammell Crow Company, Principal Mutual Life Insurance Company, Midlantic National Bank, and First Fidelity Bank. Among the many utilities that EcolSciences has served are Jersey Central Power & Light, New Jersey Natural Gas Company, Elizabethtown Gas Company, Essex and Hudson County Improvement Authorities, Ocean County Utilities Authority, and numerous municipal utilities authorities. Representative government agency clients include the U.S. Environmental Protection Agency, New York City Economic Development Corporation and New York City Department of Sanitation.

EcolSciences' interdisciplinary staff of environmental engineers, geologists, biologists and scientists has extensive experience in a diversity of studies related to biological assessment and toxic and hazardous materials management. EcolSciences has performed environmental assessments and has acquired appropriate permits and approvals under a wide variety of Federal, state, regional, and local jurisdictions. These permits include: Section 404 and Section 10 authorizations, CAFRA and Waterfront Development permits, Pinelands Commission certifications, New Jersey Freshwater Wetlands Act permits (both general and individual permits), Hackensack Meadowlands Development Commission (HMDC) approvals, and D&R Canal Commission approvals. EcolSciences' senior staff are experienced in the delivery of expert testimony; senior staff of the firm have testified in public hearings, Administrative Law proceedings, and county, regional and municipal planning boards.

Since the promulgation of the New Jersey Environmental Cleanup Responsibility Act (ECRA) and its successor, the Industrial Site Recovery Act (ISRA), EcolSciences has been involved in the implementation of the entire ECRA/ISRA program for its industrial clients. More recently, as the demonstration of "due diligence" has become a leading industry standard, EcolSciences has completed numerous Phase I environmental audits and follow-up Phase II studies to clarify the level of environmental risk and liability associated with past and current practices at a particular site or facility. These audits typically include such activities as hazardous materials inventories, building and site inspections, subsurface soil investigations, groundwater monitoring, tank testing, asbestos bulk sampling, development of remediation plans and supervision of cleanup activities. The firm and technical staff members are also certified by the NJDEP for the performance of underground storage tank installation, closure, and subsurface evaluation. All work is conducted under the supervision of a licensed professional engineer.

The biological staff of EcolSciences has conducted over 2,000 wetland delineations and environmental assessments throughout the eastern and central portions of the United States. Our staff is skilled in all technical aspects of wetland identification and delineation methodologies established by the COE, USFWS, EPA and SCS; the assessment of wetland functions and values using techniques such as HEP and WET; the assessment of development-related wetland impacts; the acquisition of wetland permits; and the development and implementation of mitigation plans. Key members of our staff are certified as Professional Wetland Scientists and provisionally certified by the COE. Additionally, EcolSciences' biologists routinely performs specialized studies related to threatened and endangered species, wildlife habitat surveys and the assessment of development-related impacts. EcolSciences' staff is skilled in the field methodologies and reporting requirements of the Federal and state agencies and has substantial experience in the field identification of protected plants and animals and their preferred habitat.

EcolSciences has and continues to play an instrumental role in the development of federal environmental policies pertaining to wetlands and hazardous waste sites through a number of manuals that have been prepared under government contract for the USEPA. Recent examples include the Manual for Achieving NEPA Functional Equivalency in CERCLA Remedial Actions, Creation of Wetland Banks for Mitigation of Impacts at Superfund Sites, Technical Procedures Manual for the Advance Identification of Wetlands, Policy Document on Wetlands Mitigation at Superfund sites, Wetland Regulations Guidebook for New York State, and Principles of Environmental Assessment: An International Training Manual.

EcolSciences is a multi-disciplinary firm that has the experience and capabilities to provide a full range of environmental services. Studies are conducted in a manner that emphasizes the balance of environmental, engineering and cost factors. This approach provides the information necessary for sound and practical project decisions.

## DAVID P. MOSKOWITZ

---

### EDUCATION:

*B.A., 1984 - Environmental Studies  
George Washington University  
Washington, D.C.*

*M.S. 2000 - Environmental Policy Studies  
New Jersey Institute of Technology  
Newark, N.J.*

### PROFESSIONAL AFFILIATIONS:

*Society of Wetland Scientists  
Association of Field Ornithologists  
ASTM Environmental Committee (1998-2002)  
Dragonfly Society of the Americas*

### PROFESSIONAL CERTIFICATIONS:

*Professional Wetland Scientist - SWS  
Certified Wetland Delineator - Corps of Engineers  
USEPA Wetland Delineation - WTI  
Qualified Ornithologist - NJDEP  
Qualified Bog Turtle Surveyor - USFWS*

### OTHER:

*Wetland Journal Technical Review Board (2000-2002)  
SWS Certification Review Panel (1998-2001)  
Policy Park Board of Directors (1999-2002)  
East Brunswick Environmental Commission  
USFWS N.J. Breeding Bird Survey Coordinator (1995-1997)  
Identification of Sedges and Rushes - Rutgers University  
Field Identification of Raptors - University of Maine  
Identification of Adult Dragonflies - University of Maine  
Identification of Larval Dragonflies - University of Maine  
Systematics & Conservation of Lepidoptera - University of Maine*

### EXPERIENCE:

Mr. Moskowitz is currently a Vice President with EcolSciences, Inc. During the past 17 years, Mr. Moskowitz has conducted more than 3,000 environmental studies for a wide range of clients including government agencies, and the development, legal, engineering and financial professions. The majority of these studies have been focused on wetland and wildlife issues including delineations, mitigation, field surveys and regulatory compliance. Mr. Moskowitz has also provided expert testimony before numerous municipal boards and has been qualified in Superior Court of New Jersey, and before the New Jersey Condemnation Commission, and the Morris County Board of Taxation. Mr. Moskowitz has published more than two dozen technical and popular papers on wildlife, wetland, and threatened and endangered species related topics.



**EcolSciences, Inc.**  
Environmental Management & Regulatory Compliance

### **Wetland Studies**

Directed and participated in more than 3,000 field studies in NJ, NY, PA, MD and CT evaluating all aspects of wetland ecology. Representative experience includes:

- The evaluation of more than 10,000 acres in the New Jersey Highlands.
- The evaluation of more than 7,500 acres in the complex red soils of the New Jersey Piedmont.
- The evaluation of nearly 3,000 acres on Staten Island, New York.

### **Brownfields and Site Investigation Studies**

Principal in charge of numerous Phase I Environmental Assessments, historic pesticide investigations and remedial activities, hazardous waste investigations and brownfields redevelopment projects.

### **Wetland Mitigation Studies**

Numerous mitigation plans have been prepared to remedy regulatory violations of various State and Federal wetland laws, and to compensate for wetland losses resulting from permitted wetland fills. Two examples of the wide variety of studies include:

Preparation of mitigation plans and specifications for the remediation of wetlands and shorelines of the Freshkills Sanitary Landfill, Staten Island, New York.

Design and implementation of a 13-acre wetland restoration project in Morris County, New Jersey utilizing air conditioning condensation as a hydrologic supplement.

### **Threatened and Endangered Species Studies**

Designed, directed and participated in numerous field studies for rare plant and animal species including Bog Turtle, Wood Turtle, Northern Pine Snake, Blue Spotted Salamander, Long Tailed Salamander, Pine Barrens Tree Frog, Great Blue Heron, Coopers Hawk, Grasshopper Sparrow, Savannah Sparrow, Upland Sandpiper, Barred Owl, Swamp Pink, Knieskern's Beaked Rush, Curly Grass Fern and Barrett's Sedge.

### **Ornithological Studies**

Numerous studies conducted throughout the northeast designed to evaluate and census individual species, avian communities and habitats, to assess potential impacts upon the species and habitats associated with land development proposals, and to comply with State and Federal Wildlife regulations. Two examples of the wide variety of studies include:

Long-eared owl habitat evaluation, pellet analysis and management plan in Somerset County, New Jersey.



Two-year avian census, habitat evaluation and regulatory assessment for the proposed redevelopment of Flushing Airport in Queens, New York by the New York City Economic Development Corporation. Breeding, wintering and migratory utilization of the site was comprehensively evaluated and barn owl pellet analysis was conducted to augment small mammal population studies.

#### **Commercial/Residential/Industrial Studies**

More than 3,000 properties have been evaluated throughout NJ, NY, PA, and CT to assess potential environmental impacts from proposed development and to insure regulatory compliance with various Local, State and Federal environmental laws. Tasks have included wetland delineation, permit acquisition and mitigation planning.

#### **Corridor Studies**

Designed, directed and participated in ecological studies and regulatory assessments for more than 350 linear miles of road corridors, gas and electric transmission right of ways and sewer and water alignments. Studies have been performed for the New Jersey Turnpike Authority, New Jersey DOT, Jersey Central Power and Light, New Jersey Natural Gas, and numerous local governments.

#### **Special Environmental Studies**

A wide range of ecological studies have been conducted for various private clients, the USEPA and other government agencies. Representative studies include:

- Bird, mammal, dragonfly, damselfly, butterfly and floral surveys for the proposed Catskill/Delaware Water Treatment Facility in Westchester County, New York.
- Habitat assessments for Pine Barrens Tree Frog and River Otter in New Jersey.
- An avifaunal study of a 500-acre proposed incinerator ash landfill site in New York, conducted for a county agency, to evaluate FAA concerns about bird strike hazards to aircraft passing over the site, resulting in the preparation of a Bird Deterrent Plan.
- Biological studies of the impacts of Folcroft Landfill upon ecological communities of Tinicum National Environmental Center, Philadelphia, PA for the USEPA, Region III.
- Red-Headed Woodpecker evaluation of two central New Jersey properties.

**Publications/Articles**

- Moskowitz, D.P., 1996. Swamp Pink: A Federally-Listed Threatened Species. *Wetland Journal* 8(3): 14-16.
- Moskowitz, D., Aufferorde, T. and M. Kovacs, (1997). Vegetation and Surrounding Landscape Characteristics of Long-Eared Owl (*Asio otus*) Winter Roosts in Central New Jersey. *Records of New Jersey Birds*. (23)1: 2-6.
- Moskowitz, D.P., 1997. Wetland Restoration Using Non-Contact Cooling Water and Stormwater Runoff as a Supplemental Hydrologic Source. *Wetland Journal* 9(1): 17-20.
- Moskowitz, D.P., 1997. Hine's Emerald Dragonfly (*Somatochlora hineana*): The First Federally Endangered Dragonfly. *Wetland Journal* (9)3: 12-14.
- Moskowitz, D.P., 1997/98. Fall Migrant Landbird Observations at Sea. *Records of New Jersey Birds*. (23)4: 95.
- Moskowitz, D.P., 1998. Build a Wetland Garden. *Water Gardening Magazine*.(2)6: 58-60.
- Moskowitz, D.P., 1998. Tips Offered on Negotiating N.J.'s Mining, Dredging Rules. *Mine Regulation Reporter*. 11(4): 86-87.
- Moskowitz, D.P., 1998. Vegetation Change in a Forested Wetland after a Bird Roost. *Northeastern Naturalist*. 5(1): 61-66.
- Moskowitz, D.P., 1998. A Wetland Delineation Primer for the Professional Land Surveyor. *Professional Surveyor Magazine*. 18(1): 22-28.
- Moskowitz, D.P. and D.M. Bell., 1998. *Archilestes Grandis* (Great Spreadwing) in Central New Jersey, with Notes on Water Quality. *Bulletin of American Odonatology*. 5(3): 49-54.
- Moskowitz, D.P., 1999. The Pine Barrens Treefrog (*Hyla Andersonii*): An Ecologist's Dream. *Wetland Journal* 11(4): 8-13.
- Moskowitz, D.P., 2000. A Comparison of Field-Delineated Wetlands to the New Jersey Freshwater Wetland Maps. M.S. thesis - New Jersey Institute of Technology.
- Moskowitz, D.P., 2000. Old Maps and Wetland Regulation. *Professional Surveyor Magazine*. 20(6): 22-30.
- Moskowitz, D.P. and T.A. Aufferorde., 2000. Persistence of Skunk Cabbage (*Symplocarpus foetidus* [L.] Nutt.) in a Drained Wetland. *Wetland Journal* 12(3): 23-29.
- Moskowitz, D., 2000. A New County Record for *Archilestes Grandis* in New York with Notes on Habitat and Water Quality. *ARGIA* 12(4): 7-8.

- Moskowitz, D.P., 2000. Habitat Notes on a Winter Saw-whet Owl (*Aegolius acadicus*) Roost in Central New Jersey. *Records of New Jersey Birds*. 26(4): 138-139.
- Moskowitz, D., 2000. Book Review: *Dragonflies through Binoculars - A Field Guide to Dragonflies of North America*. *Wetland Journal* 12(4): 41.
- Poricy Park Citizens Committee. 2001. *A Checklist and Guide to the Butterflies of Poricy Park*. Pamphlet.
- Moskowitz, D. P. 2001. First Record of the Queen Butterfly (*Danaus gilippus* Cramer) in New Jersey. *News of the Lepidopterists' Society* 43(3): 72, 74.
- Moskowitz, D., J. Moskowitz, S. Moskowitz and H. Moskowitz. 2001. Notes on a large dragonfly and butterfly migration in New Jersey. *Northeastern Naturalist* 8(4): 483-490.
- Moskowitz, D. P. 2002. An unusual interaction between a banded hairstreak butterfly (*Satyrium calanus*) Lycaenidae and a stink bug (*Banasa dimidiata*) Pentatomidae. *Entomological News* 113:(3) 183-186.
- Moskowitz, D. P. 2002. Was there an invasion of the Queen butterfly (*Danaus gilippus* Cramer) in the northeastern United States in 2001? *News of the Lepidopterists' Society* 44(2): 66-67.
- Newgard, L. and D. Moskowitz. Bog turtle: It's small, secretive, rare, and it's in our hiking region *Trailwalker* 29(4): p. 5.
- Moskowitz, D.P. and C. Westphal. 2002. Notes on the larval diet of the Painted Lichen moth *Hypoprepia fucosa*: Hubner (Arctiidae:Lithosiinae). *Journal of the Lepidopterist's Society* 56 (4): 289-290.
- Moskowitz, D. P. and T. M. Auffenorde. 2003. Bird Use at Two Simulated-Tree Cellular Towers in New Jersey. *Records of New Jersey Birds*. 28(4): p. 88-91.
- Moskowitz, D.P.- 2003. The Queen Dilemma in the Northeastern United States. *New York State Butterfly Records 2002*. New York Chapter, North American Butterfly Association. p. 49-51.
- Moskowitz, D.P., Kovacs, M. and J. Tesauro 2003. *Glyptemys* (*Clemmys*) *muhlenbergii* (Bob Turtle). Abnormal Coloration. *Herpetological Review*. 34(3): p. 240.
- Moskowitz, D.P. 2004. The Queen (*Danaus gilippus* Cramer) Dilemma in the Northeastern United States. *News of the Lepidopterist's Society*. 45(2): 62-63.
- Moskowitz, D.P. A new late flight record for *Lestes* congener in North America. *ARGIA* (*in press*).

## DANIEL BRILL

---

**EDUCATION:** B.A., 1996 – Environmental Studies  
Richard Stockton College

**AREAS OF EXPERTISE:** Ornithology  
Geographic Information Systems

**PROFESSIONAL ASSOCIATIONS:** New Jersey Audubon Society

**PROFESSIONAL CERTIFICATION:** Rutgers Cook College Office of Continuing Professional Education (2001)  
Wetlands Delineation Certificate Series  
Professional Certificate Program in Geomatics  
(Geographic Information Systems)

### EXPERIENCE:

Mr. Brill is employed as an environmental scientist with EcolSciences, Inc. His expertise lies in wildlife survey and mapping using GIS.

Mr. Brill's responsibilities include: delineating wetlands based on the Federal Manual for Identifying and Delineating Jurisdictional Wetlands, performing wildlife surveys, and preparing Letter of Interpretation and Statewide general applications, and Environmental Impact Statements (EIS).

Mr. Brill was an educator at the Cooper Environmental Center with Ocean County Parks and Recreation and a volunteer on numerous occasions with the New Jersey Department of Environmental Protection (NJDEP) and New Jersey Audubon Society preceding his position with EcolSciences.

An outline of Mr. Brill's applicable skills and experience accumulated over the last few years are presented as follows:

- Assisted in the delineation of wetlands using the Federal Manual methodology of vegetation, soils, and hydrology including:
  - Delineation of a 28-acre parcel in Hamburg Borough and Hardyston Township, Sussex County, New Jersey.
  - Delineation of a 29-acre parcel in Mount Olive Township, Morris County, New Jersey.



- Assisted in the composition of Environmental Impact Statements and Assessments for residential, industrial, and commercial projects including:
  - A proposed 4-acre light industrial facility in South Plainfield Borough, Middlesex County, New Jersey.
  - A proposed 4-acre office complex in Hillsborough Township, Somerset County, New Jersey.
  - A proposed 25-acre residential development in Edison Township, Middlesex County, New Jersey.
- Ornithological and other wildlife studies frequently involving threatened and endangered species with extensive field work and point and roadside counts including:
  - Aided the Sandy Hook Spring Hawk Count. Thirteen species of raptors were identified and recorded including bald eagle and peregrine falcon. This work included educating the public on raptor identification and conservation.
  - Project assistance for Neotropical Passerine Critical Areas: Pinelands Survey (Landscape Project for Protection of Rare Species). The objective of this NJDEP sponsored task was to determine the distribution and abundance of neotropical migratory birds and other species along with their structure of habitat. Personal observations include Cooper's hawk and grasshopper sparrow, NJ threatened species.
  - Participation in New Jersey Breeding Bird Atlas with data contributed towards *Birds of New Jersey*, published in 1999. Work involved surveying all bird species in all habitats within blocks, one sixth of a USGS quadrangle, during the breeding season in Atlantic County. Detected species were recorded with breeding codes assigned to each based on observed behavior.
  - Submitted personal observations of rare and accidental species in the state to the New Jersey Bird Records Committee including swallow-tailed kite and the tenth accepted state record of wood stork, a federally endangered species.





**EcolSciences, Inc.**  
Environmental Management & Regulatory Compliance