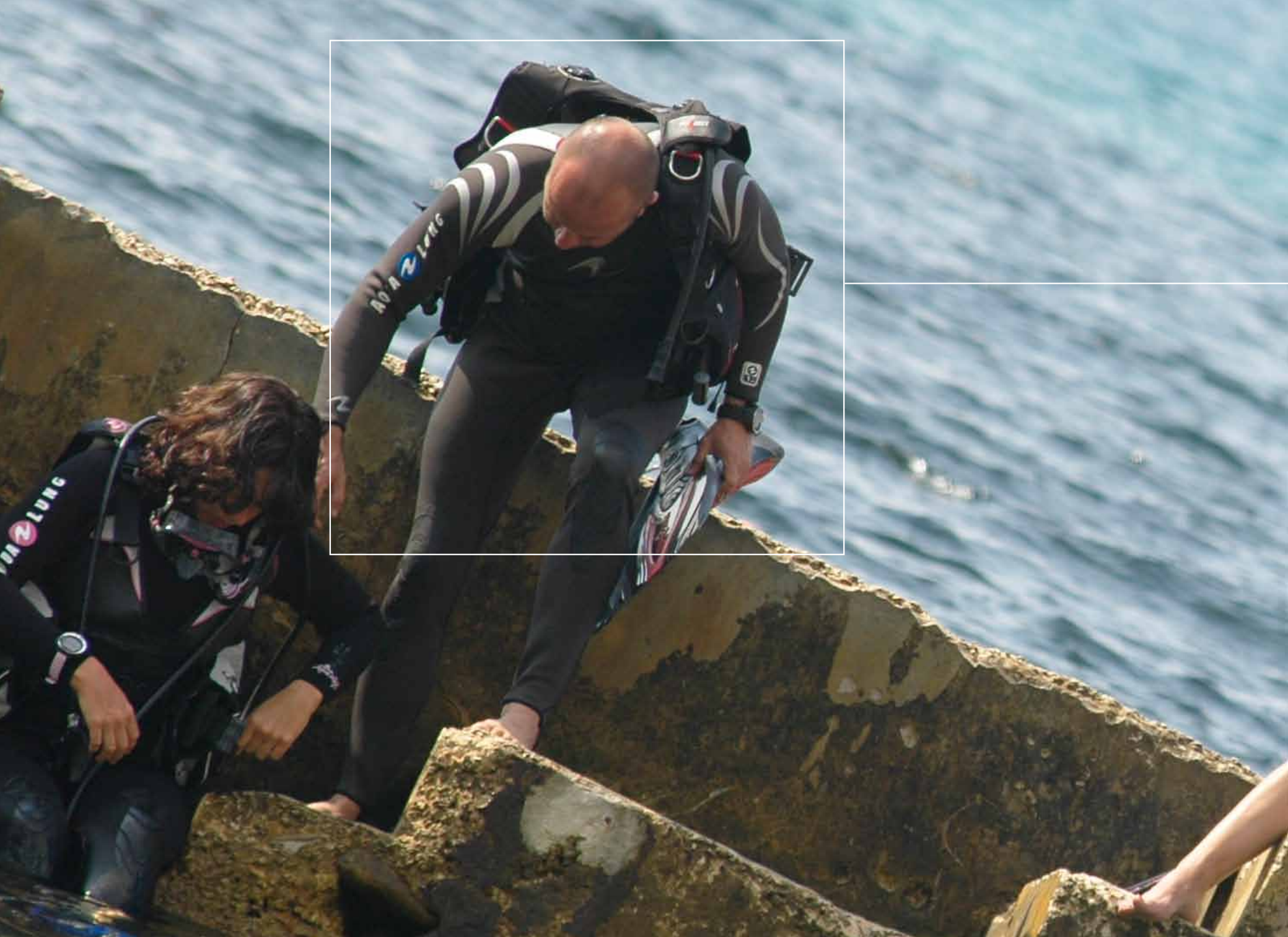


COLLECTION 2012

AQUA  LUNG®







# AQUA LUNG®

FINS Pag. 4

MASKS - SETS Pag. 14

SNORKELS Pag. 24

TORCHES - KNIVES - ACCESSORIES Pag. 28



## FINS

AQUA LUNG



### SLINGSHOT

Offers power, versatility and comfort. The gear shift allows to adjust the power return of the blade to suit any kind of diving or diver.

### ESBS



Ergonomic Strap & Buckles System

Quick release buckles

Easy adjustment



"Heavy Duty Rings" facilitate the strap placement and adjustment, even wearing gloves.

*A fin with a great performance, always*



#### POWER BANDS

These pure silicone straps are loaded with energy during the power stroke. They release their energy prior to the upstroke.

#### VARIABLE MOTION ARMS

The lever point of the blade has been moved back to the middle of the foot pocket, taking the strain off the toes and the ankle. At the same time it allows all the power to be transferred from the leg to the fin.

#### SIZES

SMALL	REGULAR	X LARGE
-------	---------	---------

Designed by Mirko Bosio

Lady

#### CHARACTERISTICS

- \_ Type: adjustable
- \_ Buckles: ESBS



#### THREE SPEED GEAR SHIFT

The gear shift allows the diver to choose the best speed-to effort ratio to fit the specific conditions of every dive.



*The most compact, comfortable and powerful fin ever made. Designed to fly*

Extremely light, ideal for all kind of scuba diving. To realize it were used the most advanced polymers.



**ANTI-SLIP RUBBER PLAQUES**

Guarantee excellent adhesion



The gear shift is adjustable on two positions and it allows the diver to choose the best speed effort to fit the specific conditions every dive.

SIZES	SMALL	REGULAR	X LARGE
Length cm.	53	53	53
Weight kg.	1,52	1,49	1,71

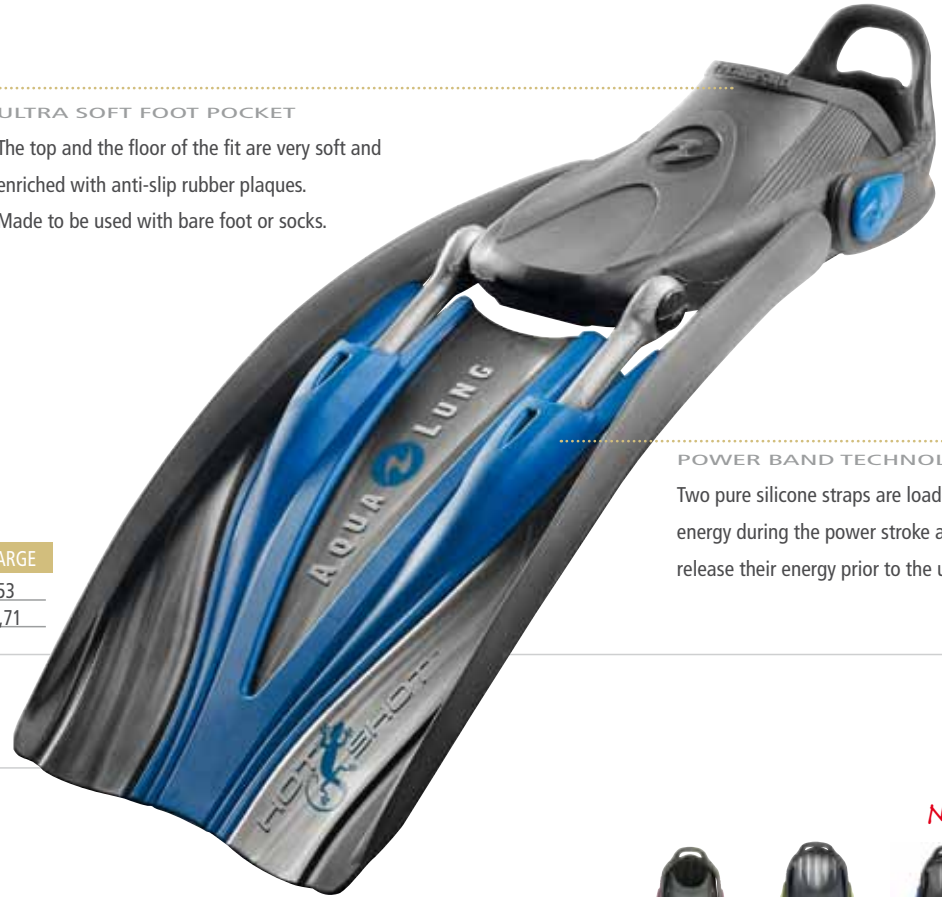
**ULTRA SOFT FOOT POCKET**

The top and the floor of the fit are very soft and enriched with anti-slip rubber plaques.

Made to be used with bare foot or socks.

**POWER BAND TECHNOLOGY**

Two pure silicone straps are loaded with energy during the power stroke and they release their energy prior to the upstroke

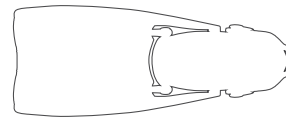


**CHARACTERISTICS**

- \_ Type: adjustable
- \_ Buckles: rotating
- \_ NEW SELF ADJUSTING COMFO STRAP: made of special elastomer,

to guarantee the best comfort possible.

- \_ ULTRA SOFT FOOT POCKET
- \_ POWER BAND TECHNOLOGY



Length 53 cm  
(all sizes)



*State of the art for a top level fin: comfortable, powerful and versatile!*

Blade realized with the most advanced polymers and high quality elastomers.

Guarantees absolute progressive flexibility, sign of a more elastic response.

FOOTPOCKET

The foot pocket is not only a masterpiece of anatomy and comfort but it is also a step forward in the field of engineering research.

The different thickness zones transmit perfectly the fin power from the leg to the fin, and the low drag profile eliminates vortexes.

POWER ZONE

A flexible and extending membrane, realized in ultra-elastic rubber, becomes the real heart of the fin during every stroke. It is loaded with energy during the power stroke and it releases the energy prior to the upstroke.

SIZES

SMALL    REGULAR    X LARGE

SIDE RUBBER RIBS

Great attention has been put in the search of fluid lines. Furthermore they channel the water eliminating any possible derapage effect for an optimal stability.



Anti-slip rubber pads  
Guarantee excellent adhesion

ESBS



Quick release buckles.



"Heavy Duty Rings" facilitate the strap placement and adjustment, even wearing gloves.

CHARACTERISTICS

- \_ Type: adjustable
- \_ Buckles: ESBS

*New*    *New*



Powerful, solid and durable fin recommended for Diving Centers too



Hi-grip elastomeric sole

SIZES		
SMALL	REGULAR	X LARGE



**NEW**



CHARACTERISTICS

- \_ Type: adjustable
- \_ Buckles: Quick Release



DEEP COLOUR TECHNOLOGY:

Hot lime and orange colors, made with this technology, guarantees high visibility underwater





**ERGONOMIC STRAP**

"Heavy Duty Rings" facilitate the strap placement and adjustment, even wearing gloves



**POWER TRANSMISSION ZONE**

the foot pocket, produced with two different technopolymers, offers excellent comfort and guarantees maximum efficiency to kick



**STRATOS TECHNOLOGY**

the composite structure provides strength and elasticity at the same time



The sole has generous non-skid rubber patches

**ESBS**



Quick release buckle system.



"Heavy Duty Rings" facilitate the strap placement and adjustment, even wearing gloves.

**SIZES** COMPACT REGULAR GIANT



The fin blade is very flexible with excellent thrust.

**SIZES** SMALL MEDIUM LARGE



**CHARACTERISTICS**

- \_ Type: adjustable
- \_ Buckles: ESBS

Blades Flex is developed around the layering technology, which combines rubber and a plastic support. Spring effect and flow channelling engine ring have been optimized to get the highest performance in any kind of dive. Blades Flex are totally rubber edged for better protection against impact.



**CHARACTERISTICS**

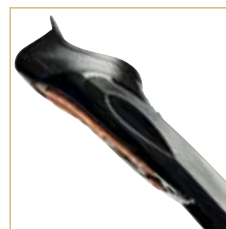
- \_ Type: adjustable
- \_ Buckles: Quick Release

Caravelle ADJ fins are made of flexible thermoplastic material and rubber. The blade has an effective thrust structure that allows high performance with a minimum effort. The foot pocket is soft and comfortable.

*Express opens a new way of full-pocket fins*



Large non-skid rubber patches



The strong rubber side ribs increase performances and lengthen the life of the fin



Power Zone

**SIZES**

DAL 36/37 AL 46/47

Designed by Mirko Bosio



**CARATTERISTICHE**

- \_ Large blade moulded in extra flexible material
- \_ The elastic rubberized zone in the full-foot tip allows the blade to bend obtaining the optimum flexibility
- \_ POWER ZONE: Once loaded

- with energy on the power stroke, the special full-foot tip zone will release the energy prior to the upstroke to provide an added boost of power.
- \_ Type: foot pocket





**SIZES** DAL 36/37 AL 46/47

CHARACTERISTICS

- \_ Type: foot pocket
- \_ The anatomically shaped foot pocket enhances comfort and performance
- \_ The blade varies in thickness
- \_ The side ribs transmits the stroke effort from foot to blade without bending
- \_ The side ribs transmit the stroke effort from foot to blade without bending.



DEEP COLOUR TECHNOLOGY: hot lime



**SIZES** DAL 36/37 AL 46/47

#### CHARACTERISTICS

- \_ Type: foot pocket
- \_ The blade of the fin extends all the way back under the heel, forming an integral unit with the foot pocket, and offers an easy and performing kick

- \_ The blade is completely rubber edged to provide maximum active and passive protection



DEEP COLOUR TECHNOLOGY: hot lime

# MASKS - SET



*New*

*New*



This two-lens mask is characterized by a completely innovative, patented structure that minimizes the distance between the lens and the ocular orbit. The result is an extremely compact internal volume never achieved before and an excellent field of vision. Now also available in clear silicone skirt.



*The best choice for scuba and free divers*



Cardanic Joint Buckles



#### CHARACTERISTICS

- \_ Skirt: Silicone LSR, clear or black
- \_ Glass: 3 mm, tempered
- \_ Strap: Silicone with enlarged headpiece
- \_ Frame: Bi-colour
- \_ Buckles: Cardanic Joint Buckles
- \_ Weight: 148 g

- \_ **CARDANIC JOINT BUCKLES:** The patented Cardanic Joint Buckles rotate both up and-down and in-and-out. They provide maximum adaptability and comfort to any head shape. The opposite push buttons activation makes the buckle easy to use, even when wearing gloves.



*New*

#### MASK BOX

- \_ High product visibility
- \_ Easy to open and close
- \_ Durable
- \_ Masks: Micromask, Infinity, Look 2, Look 2 Midi, Teknika, Favola and Ventura+

## *A perfect vision without borders*

The shape of its lenses and their inclination provide a wide field of vision upwards and downwards. Side lenses are made of an optical quality polymer, which increases brightness and lateral vision



The shape of the lenses provides superior brightness and wide peripheral field of vision

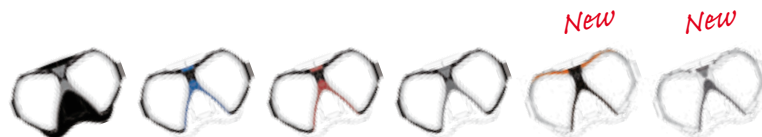


Cardanic Joint Buckles



### CHARACTERISTICS

- \_ Skirt: Silicone LSR, clear or black
- \_ Glass: 3 mm, tempered
- \_ Strap: Silicone with enlarged headpiece
- \_ Frame: 3 colours, overmoulded
- \_ Buckles: Cardanic Joint Buckles
- \_ Weight: 205 g
- \_ NEW MASK BOX



*Two masks which offer great comfort and the option to use optical lenses*

Silicone strap with wide headpiece. The close-to-the-cheekbones frame design guarantees an excellent view in all directions. Low inner volume.



THE LOOK 2 MIDI VERSION FITS PERFECTLY SLIM FACES.



CHARACTERISTICS

- \_ Skirt: Silicone LSR, clear or black
- \_ Weight: 185 g (LOOK 2) 180 g (LOOK 2 MIDI)
- \_ Buckles: Cardanic Joint Buckles

\_ NEW MASK BOX

QUICK-RELEASE SYSTEM



**RAPID AND EASY SUBSTITUTION OF THE LENSES**

Symmetrical negative lenses from -1,00 up to -10,00 (increments of 0,5 diopter)  
Positive lenses (left and right) from +1,50 up to +3,00 (increments of 0,5 diopter)



## “Heavy Duty” Mask

Its shape and the outer frame, realized by using a shock absorbent technopolymer, enhance the mask stoutness. Assembly is made by AISI 304 stainless steel bolts and nuts, the best choice for technical divers.



CE

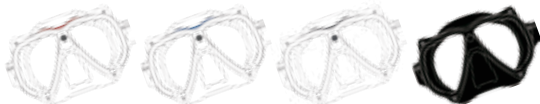


### CHARACTERISTICS

- \_ Skirt: Silicone LSR, clear or black
- \_ Glass: Float quality, 3 mm, tempered according to ANSI/DEMA norms
- \_ Strap: Silicone with enlarged headpiece
- \_ Frame: anti-shock material
- \_ Buckles: Cardanic Joint Buckles
- \_ Screws: INOX AISI 304
- \_ Weight: 205 g

\_ NEW MASK BOX

TEKNIKA “Full View” with transparent frame



## 180° field of vision

Ultralight mask. Extremely compact internal volume.



CE

### CHARACTERISTICS

- \_ Skirt: hypoallergenic silicone
- \_ Glass: curved with anti fog treatment. Plexisol
- \_ Strap: silicone
- \_ Frame: ultralight
- \_ Buckles: quick adjustment
- \_ Weight: 98 g

*Favola mask guarantees an incredible field of vision that, along with its compact internal volume, makes it suitable for all types of diving.*

The lens inclination provides a wide field of vision upwards and downwards. The exclusive silicone skirt fits well with any type of face.



CHARACTERISTICS

- \_ Skirt: Silicone LSR, clear or black
- \_ Strap: Silicone with enlarged headpiece
- \_ Frame: anti-shock material
- \_ Buckles: Cardanic Joint Buckles
- \_ Weight: 205 g

\_ NEW MASK BOX



## One of the best selling masks in the world

Only the best Liquid Silicone Rubber (LSR) is used to make the skirt of the mask, providing maximum transparency and the best UV-ray resistance. Buckles rotate up to 360 degrees and allow immediate adjustment of the strap even while diving. Look can be easily transformed into an optical mask. This operation is tool-free.



Symmetrical negative lenses  
from -1,00 up to -10,00 (increments of 0,5 diopter)  
Positive lenses (left and right)  
from +1,50 up to +3,00 (increments of 0,5 diopter)



STRAP IN NEOPRENE

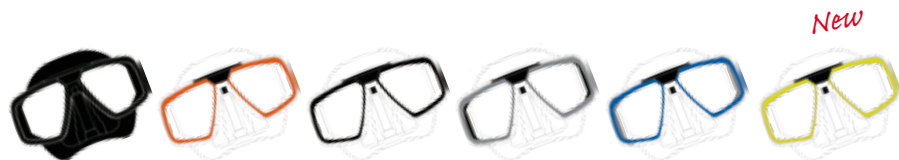


### CHARACTERISTICS

- \_ Skirt: Silicone LSR, clear or black
- \_ Glass: Float quality, 4 mm, tempered according to ANSI/DEMA norms
- \_ Strap: Silicone
- \_ Buckles: Quick adjusting, rotating 360°
- \_ Weight: 209 g



Accessory that improves comfort.  
It fits directly on the mask strap.





*A new single-lens mask with the widest field of vision ever*

A Technisub timeless classic, aesthetically revisited and enriched with new cardanic joint buckles.



CHARACTERISTICS

- \_ Skirt: Silicone LSR, clear or black
- \_ Glass: Float quality, 4 mm, tempered according to ANSI/DEMA norms
- \_ Strap: Silicone with enlarged headpiece
- \_ Buckles: Cardanic Joint Buckles
- \_ Weight: 210 g

\_ NEW MASK BOX



*Ventura is equipped with a 5 mm thick tempered glass which ensures stoutness and durability.*

Its silicone skirt fits most types of faces



Weight: 224 g (VENTURA)  
Weight: 180 g (VENTURA MIDI)



CHARACTERISTICS

- \_ Skirt: Silicone LSR, clear or black
- \_ Glass: Float quality, 5 mm, tempered according to ANSI/DEMA norms
- \_ Strap: Silicone
- \_ Buckles: Quick adjusting

VENTURA



VENTURA MIDI



RECOMMENDED FOR SLIM FACES.

*Ideal for scuba diving and snorkeling*



SET LOOK 2 + PURGE VALVE SNORKEL



SET LOOK 2 MIDI + PURGE VALVE SNORKEL



**NEW**



SET FAVOLA + PURGE VALVE SNORKEL

*New*

*New*



PACKAGING WITH NEW MASK BOX



SET LOOK + PURGE VALVE SNORKEL



LOOK BLACK + MACH DRY



VENTURA CLEAR + MACH DRY



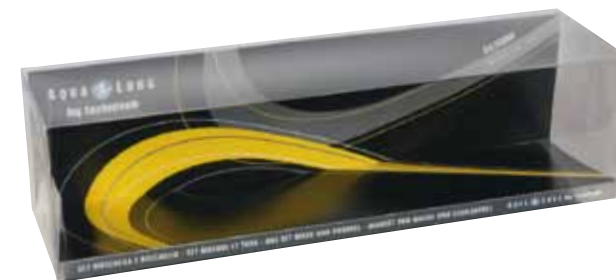
VENTURA MIDI CLEAR + HELIOX MIDI P/V



VENTURA MIDI CLEAR + MIX JR



MEDIT + MACH DRY



PACKAGING



# SNORKELS

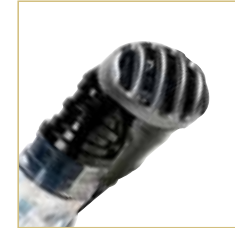


Zephyr is available in different colours with black or clear tube

*The ideal snorkel for all diving activities. Designed to get maximum drainage with minimal effort*



SPLASHGUARD



EPV (Elliptical Purge Valve)



Anatomic silicone mouthpiece

FIX CLIP

FLEXIBLE AND CORRUGATE TUBE ZONE

HOSE JOINT ROTATION DRY SYSTEM

EPV (Elliptical Purge Valve)



**CHARACTERISTICS**

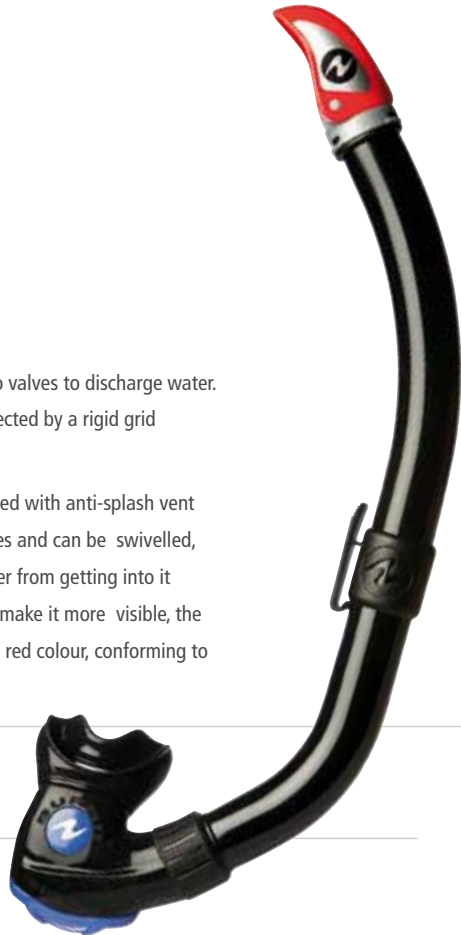
- \_ SPLASH GUARD: prevents water to getting into the tube accidentally
- \_ EASY AND QUICK FIX CLIP: to fix the mask to the tube
- \_ FLEXIBLE AND CORRUGATE TUBE ZONE
- \_ HOSE JOINT ROTATION DRY SYSTEM: the rotating mouthpiece is oversized to collect any residual water, turning loose the breathing. Water tight is guaranteed by an O-ring
- \_ EPV (Elliptical Purge Valve): the elliptical exhaust valve offers a minimum resistance to the opening, allowing the rapid drainage of residual water
- \_ ANATOMIC SILICONE MOUTHPIECE: available in Regular and Midi versions



BURAN has two valves to discharge water. Valves are protected by a rigid grid



Buran is equipped with anti-splash vent system. It rotates and can be swivelled, preventing water from getting into it accidentally. To make it more visible, the anti-splash is in red colour, conforming to EN 1972 norm



CHARACTERISTICS

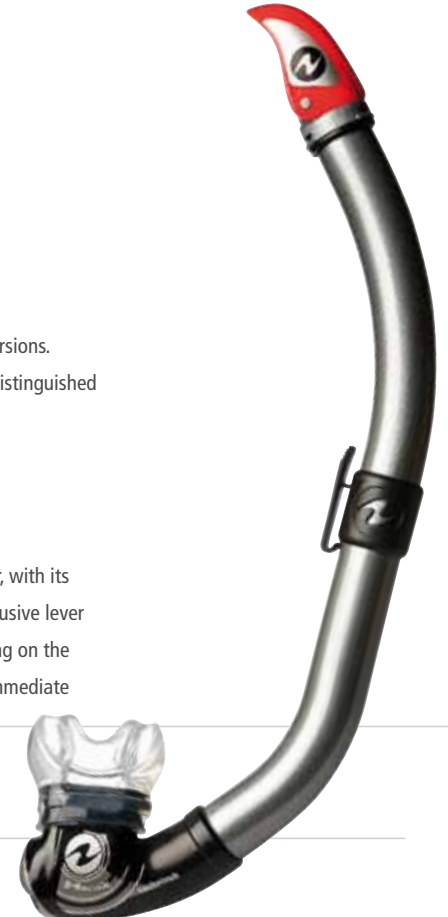
- \_ Type: Traditional
- \_ Tube: Anatomic
- \_ Mouthpiece: Orthodontic, clear or black
- \_ Materials: Thermoplastic and silicone
- \_ Valve system: Double



The Heliox's two versions. The P/V version is distinguished by the silver grid.



The snorkel retainer, with its innovative and exclusive lever system, makes fitting on the mask simple and immediate

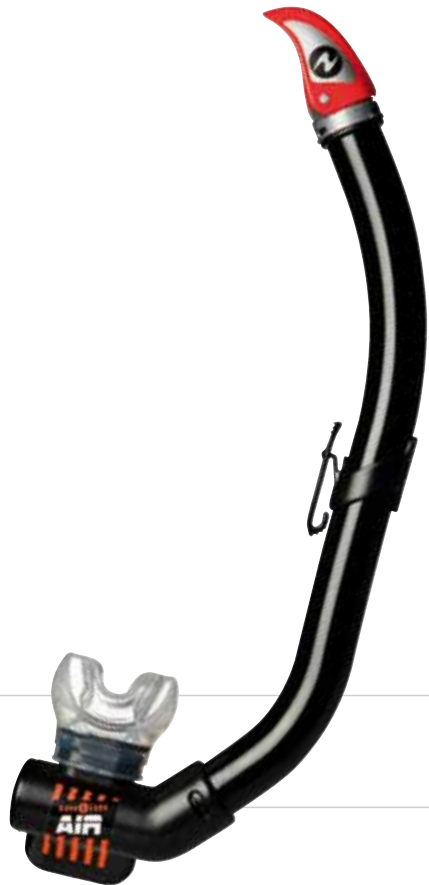


CHARACTERISTICS

- \_ Type: Traditional
- \_ Tube: Anatomic
- \_ Mouthpiece: Orthodontic (clear or black) or midi (clear)
- \_ Materials: Thermoplastic and silicone
- \_ Valve system: single







## CHARACTERISTICS

- \_ Type: Traditional
- \_ Tube: Anatomic
- \_ Mouthpiece: Orthodontic, clear or black
- \_ Materials: Thermoplastic and silicone
- \_ Valve system: Double



## CHARACTERISTICS

- \_ Type: Traditional
- \_ Tube: Anatomic
- \_ Mouthpiece: Anatomic, clear or black
- \_ Materials: Thermoplastic and silicone



## CHARACTERISTICS

- \_ Type: Traditional
- \_ Tube: Straight
- \_ Mouthpiece: Anatomic, clear
- \_ Materials: Thermoplastic



## CHARACTERISTICS

- \_ Type: Traditional
- \_ Tube: Straight
- \_ Mouthpiece: Anatomic, black
- \_ Materials: Thermoplastic

TORCHES  
KNIVES  
ACCESSORIES



Light source: 3 LED Cree  
XL-M 260 lumen each



Battery compartment

Designed in compliance with international quality standards, this torch offers high performance combined with a unique and innovative Italian design. The quality of light is only achievable with last generation leds most powerful in the market. The Aqua Lung custom made optics allow us to obtain a light beam perfectly calibrated and homogeneous, with no marks. The anodized aluminium body is made from extruded bar; it offers a good surface resistance to abrasion. An important safety margin is the maximum operational depth, 300m.

## 3 led (260 lumen each) on-line underwater torch

Dimensions: 185x78x36 mm. Strength and solidity.



NEW

### CHARACTERISTICS

- \_ Light source: 3 LED Cree XL-M 260 lumen each
- \_ Ergonomic handle
- \_ Magnetical switch self-locking slider one hand operated
- \_ Powered by: 4+4 (optional) "AA" cells
- \_ Battery compartment
- \_ It fits comfortably in BC pocket
- \_ Weight in water (with 8 "AA" cells): 166g
- \_ Weight in air (with 8 "AA" cells): 516g
- \_ Maximum operational depth: 300 m



PACKAGING

## Single led 260 lumen underwater torch

Dimensions: 230x41mm. Strength and solidity.



Light source: 1 LED  
Cree XL-M 260 lumen



Clip-on holder



NEW



### CHARACTERISTICS

- \_ Light source: 1 LED  
Cree XL-M 260 lumen
- \_ Clip-on holder
- \_ Powered by: 3 "C" cells
- \_ Mechanical switch one hand operated
- \_ Safety Catch
- \_ Weight in water (with 3 "C" cells): 316g
- \_ Weight in air (with 3 "C" cells): 506g
- \_ Maximum operational depth: 300 m



PACKAGING



## 1600 lumen, 50 minutes, 2 power settings

Pre-formed NiMH battery pack, high power batteries allow partial or total quick recharging



Rechargeable without removing the battery pack



- \_ On/Off and power selection button
- \_ Emergency flashing button
- \_ Warning LED
- \_ Pressure relief valve
- \_ Split ring in stainless steel

**NiMH**

**W50**

### CHARACTERISTICS

- |  |  |  |   |
|--|--|--|---|
| <ul style="list-style-type: none"> <li>_ Body material: Anodized aluminium</li> <li>_ Batteries: NiMH battery pack</li> <li>_ Power: Exceeding 50 W</li> <li>_ Duration (including reserve): Approx 50 minutes at maximum power</li> <li>_ Recharging time: 6+3 hours</li> <li>_ Diameter: 84 mm</li> <li>_ Dimensions: 220 x 88 mm</li> </ul> | <ul style="list-style-type: none"> <li>_ Tempered mineral glass: 6 mm</li> <li>_ Weight in air / water: 1700 g / 700 g</li> <li>_ Operational depth: 120 m</li> <li>_ Flashing function</li> <li>_ Electronic switch</li> <li>_ Adjustable focus, longitudinally and transversally</li> <li>_ Two power settings selection, with just</li> </ul> | <ul style="list-style-type: none"> <li>one switch</li> <li>_ Flashing function button for emergency</li> <li>_ One-way pressure relief valve to prevent damage caused by excessive build up of gas</li> <li>_ Double O-ring system on each possible leak path</li> <li>_ Retractable handle that also acts as</li> </ul> | <ul style="list-style-type: none"> <li>a device to prevent the torch being switched on accidentally</li> <li>_ Multi-mirror parabolic reflector.</li> <li>_ Diameter 72 mm</li> </ul> |
|--|--|--|---|

*600 lumen, 60 minutes, 2 power settings*

The 20 Watt bulb provides quality light comparable to a classic 35 Watt



W50

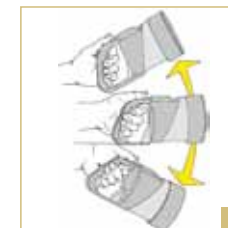
NiMH

CHARACTERISTICS

- \_ Body material: Anodized aluminium
- \_ Batteries: NiMH battery pack
- \_ Power: Exceeding 20 W
- \_ Duration (including reserve): Approx 60 minutes at maximum power
- \_ Recharging time: 6+3 hours
- \_ Diameter: 69,5 mm
- \_ Dimensions: 180 x 69,5 mm
- \_ Tempered mineral glass: 6 mm
- \_ Weight in air / water: 910 g / 240 g
- \_ Operational depth: 120 m
- \_ Flashing function
- \_ Electronic switch
- \_ Adjustable focus, longitudinally and transversally
- \_ Double O-ring system on each possible leak path
- \_ Multi-mirror parabolic reflector,
- \_ Diameter 60 mm
- \_ Retractable stainless steel handle

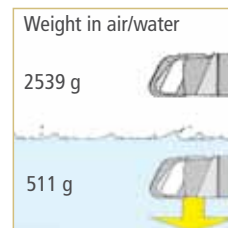
## 3600 lumen, 33 minutes or 1600 lumen, 70 minutes

Excellent handling and use thanks to the rear handgrip



1

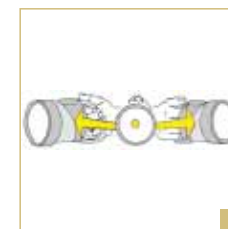
(1-2) The VEGA 100 handle system has the advantage of allowing it to be held in any position and reduces wrist effort. The centre of buoyancy has been placed 40/50 mm from the weight center. The lamp can be handled with little effort.



Weight in air/water

2539 g

511 g



2

NiCd

W100

### CHARACTERISTICS

- \_ Body material: Thermoplastic
- \_ Batteries: NiCd battery pack
- \_ Power: 100 W and 50 W
- \_ Duration: 33 min. (100 W) 70 min. (50 W)
- \_ Recharging time: 14 hours
- \_ Diameter: 110 mm
- \_ Length: 295 mm
- \_ Tempered mineral glass: 6 mm
- \_ Weight in air/water: 2539 g / 511 g
- \_ Multi-mirror reflector diameter: 92 mm
- \_ Operational depth: 120 m
- \_ Electronic charger
- \_ Mechanical switch
- \_ Safety lock with sliding cover
- \_ Metallic reflector
- \_ Provided with 100 W and 50 W bulbs, easy to replace
- \_ With the 50 Watt bulb the duration of the torch increases up to 70 minutes
- \_ Power is supplied by a pre-adapted nickel-cadmium battery pack without memory effect
- \_ 3 different systems avoid gas built-up
- \_ Charger supplied

*Rechargeable version: 500 lumen, 90 minutes  
or 360 minutes with an X-Lite Bulb - Battery powered: 121 lumen, 16 hours*



External charging without having to remove the batteries.



Switch has been constructed to be thumb operated. Three positions: On/Off and Signal Flashing. The sliding cover allows the switch to be locked in either "Off" or "On" position



W 20  
NiCd

X-LITE  
5XD

VEGA 2 CHARACTERISTICS

- \_ Body material: Thermoplastic
- \_ Batteries: 5 D size elements
- \_ Power: X-Lite
- \_ Duration: 16 hours
- \_ Diameter: 110 mm
- \_ Length: 215 mm
- \_ Front glass: Thermoplastic
- \_ Weight in air/water: 1398 g / 125 g
- \_ Multi-mirror reflector diameter: 92 mm

- \_ Operational depth: 120 m
- \_ Mechanical switch
- \_ Safety lock with sliding cover
- \_ Metallic reflector

VEGA 2 RECHARGEABLE CHARACTERISTICS

- \_ Body material: Thermoplastic
- \_ Batteries: NiCd 5 D size elements
- \_ Power: 20 W & X-Lite
- \_ Duration: 90 min. (20 W) 360 min. (X-Lite)
- \_ Recharging time: 14 hours
- \_ Diameter: 110 mm
- \_ Length: 215 mm
- \_ Front glass: Thermoplastic

- \_ Weight in air/water: 1431 g / 158 g
- \_ Multi-mirror reflector diameter: 92 mm
- \_ Operational depth: 120 m
- \_ Electronic charger
- \_ Mechanical switch
- \_ Safety lock with sliding cover
- \_ Metallic reflector



## 890 lumen, 60 minutes

This lamp has an electronic circuit that allows to check the battery level both while charging and diving. The light intensity is constant for 90% of the autonomy. The Soft-Start progressive switch-on protects the lamp against ignition peaks. Bulbs of the following wattages can be used: 20 Watt, X-Lite. The battery pack can be manually removed in a few seconds -the perfect solution to new airline regulations requiring batteries to be carried separately from the torch.



### CHARACTERISTICS

- \_ Body material: Partially rubberized thermoplastic
- \_ Batteries: NiMH battery pack
- \_ Power: 35 W
- \_ Duration: Approx. 60 minutes
- \_ Recharging time: 6 + 3 hours
- \_ Diameter: 116 mm
- \_ Length: 225 mm
- \_ Over-pressure valve
- \_ Tempered mineral glass: 6 mm
- \_ Multi-mirror reflector diameter: 92 mm
- \_ Operational depth: 120 m
- \_ Electronic charger
- \_ Electro-magnetic switch
- \_ Safety lock with sliding cover
- \_ Metallic reflector

## *130 lumen, 14 hours*

Extremely compact. To switch on and off, gently squeeze the trigger with the index finger



X-LITE  
4XD

### CHARACTERISTICS

- \_ Body material: Thermoplastic
- \_ Batteries: 4 D size elements
- \_ Power: 5,9 W
- \_ Duration: 14 h
- \_ Diameter: 97 mm
- \_ Dimension: 200 x 145 mm
- \_ Front glass: Thermoplastic
- \_ Weight in air/water: 1013 g / 25 g
- \_ Multi-mirror reflector diameter: 97 mm
- \_ Operational depth: 120 m
- \_ Mechanical switch
- \_ Safety lock
- \_ Metallic reflector

## *More than 6000°K, 8 hours*

LUMEN LED uses 4 latest generation LEDs, which offer low energy consumption with high lighting efficiency. LEDs are super powered for a colour temperature of over 6000°K, and have a working life around 50.000 hours. Lumen LED is fitted with an electronic circuit that ensures the best power supply and protects the LEDs. Power supply is provided by 6 C size batteries providing more than 8 hours autonomy.



The metal lighting head, with its 4 LEDs and electronic circuit, is completely watertight

6 x C

### CHARACTERISTICS

- \_ Body material: Partially rubberized thermoplastic
- \_ Batteries: 6 C size elements
- \_ Power: Comparable to more than 50 W
- \_ Colour temperature: More than 6000°K
- \_ Duration: More than 8 h
- \_ Dimensions: 60 x 235 mm
- \_ Front glass: Thermoplastic
- \_ Operational depth: 100 m
- \_ Mechanical switch
- \_ Safety lock

*A considerable power, a high autonomy and compactness make of Lumen X6 and X4 the perfect lights for several diving purposes*

Conceived to be housed in the BC pocket. Powerful and concentrated beam of a very white light



Colours available: black/gray, black/orange



4 x C

6 x C



## LUMEN X4 CHARACTERISTICS

- \_ Body material: Partially rubberized thermoplastic
- \_ Batteries: 4 C size elements
- \_ Power (lumen): 110
- \_ Duration: More than 6 h
- \_ Dimensions: 60 x 165 mm
- \_ Front glass: Thermoplastic
- \_ Operational depth: 120 m
- \_ Mechanical switch
- \_ Safety lock
- \_ Reflector: Thermoplastic
- \_ Multi-mirror finishing

## LUMEN X6 CHARACTERISTICS

- \_ Body material: Partially rubberized Thermoplastic
- \_ Batteries: 6 C size elements
- \_ Power (lumen): 130
- \_ Duration: More than 6 h
- \_ Dimensions: 60 x 220 mm
- \_ Front glass: Thermoplastic
- \_ Operational depth: 120 m
- \_ Mechanical switch
- \_ Safety lock
- \_ Reflector: Thermoplastic
- \_ Multi-mirror finishing

## CHARACTERISTICS

- \_ Sliding magnetic switch, with On/Off safety lock
- \_ Tempered glass lens
- \_ Battery housing: Conceived to use 4 or 8 AA batteries, according to the autonomy needed





Available with and without hammer cap.



Knife cap carries a INT regulator seat O-ring.

The blades of Diablo are made of a stainless steel specifically conceived for the marine environment, offering a unique compromise between corrosion resistance and edge maintenance. Anatomic handle provides a perfect grip. Fitted with long-lasting, UV resistant, quick Release and adjusting rubber straps.



RAZOR

152x  
30x5

RAZOR CHARACTERISTICS

- \_ A very sharp blade. Razor is available with and without hammer cap.



PROFESSIONAL

140x  
30x5

PROFESSIONAL CHARACTERISTICS

- \_ Multipurpose blade suitable for different uses  
Blade with line cutter and different saw edges with thin and medium teeth.



TOOL

140x  
30x5

TOOL CHARACTERISTICS

- \_ The blade has 14 and 16 mm slots to fit regulators and hose ends.  
Available with hammer cap only.

Mid size, lightweight and easy to handle knife range.



ZAK 1

ZAK 2

**NEW**

108x  
26x5

CHARACTERISTICS

- \_ Blades are made of a special stainless steel.
- \_ The sheath is equipped with long-lasting rubber straps fitted

with quick-release and adjustable buckles.

Colours available: black/gray, black/orange

Small, effective and versatile knives. Total length (including handle) is of 170 mm. The non-mechanical holster is supplied with quick-release straps for leg mounting and accessories, for BC and hose mounting.



MINI ZAK ALFA

MINI ZAK BETA

80x  
25x3,5



MINI ZAK holster fits on any hose using its special bracket



MINI ZAK holster fits on any BC using its special pliers



SOFT ANKLE WEIGHT

CHARACTERISTICS

- \_ Made of neoprene, with lead shots.
- \_ Double velcro closing.
- \_ Weight: 500 g



RAPID WEIGHT BELT

CHARACTERISTICS

- \_ Stainless-steel buckle.
- \_ 50 mm wide.



DECOMPRESSION BUOY

CHARACTERISTICS

- \_ For submersed divers, 150 cm long.
- \_ A weight at the bottom of buoy keeps it in a vertical position.



IDRODYN

CHARACTERISTICS

- \_ 500 and 1000 kg professional Lifting Bags.



SIGNAL BUOY

CHARACTERISTICS

- \_ Signal Buoy Ballon: red colour, inflatable flag.
- \_ Signal Buoy: yellow colour, clutch release flag.
- \_ Torpedo Buoy: secures minimum drag.



WETSUIT CEMENT

CHARACTERISTICS

- \_ Allows quick minor repairs on neoprene



ANTI-FOG

CHARACTERISTICS

- \_ Does not contain formaldehyde
- \_ Reduces fogging improving the visibility underwater



SILICONE GREASE

CHARACTERISTICS

- \_ The application silicone grease extends the life of the O-rings and helps to reduce friction



SILICONE SPRAY

CHARACTERISTICS

- \_ Protects equipment from the attack of the salt





Technisub S.p.A - Via Gualco, 42 - 16165 Genova - Italy Tel. - (39) 010 54451 - Fax. (39) 010 5445244 - [www.technisub.com](http://www.technisub.com)

Products, technical data and specifications in this catalogue are subject to change without notice.

**w w w . t e c h n i s u b . c o m**

**TECHNISUB S.p.A.**

**Via Gualco, 42 - 16165 Genova - Tel. +39 010 54451**

**Fax +39 010 5445244 - e-mail: [info@technisub.com](mailto:info@technisub.com)**