

Phaser®
6128MFP
A4
Colour Laser
Multifunction Printer



Xerox Phaser® 6128MFP Colour Laser Multifunction Printer Evaluator Guide

About this Guide

This Evaluator Guide introduces you to the Xerox Phaser® 6128MFP multifunction printer, explains its key features and performance advantages, and provides guidance throughout your printer evaluation process.

Contents

Section 1: Introducing the Xerox Phaser 6128MFP multifunction printer

- 3** **Product Overview**
- 5** **Phaser 6128MFP Multifunction Printer Configurations**

Section 2: Evaluating Colour Laser Printers

- 6** **Overview**
- 7** **Evaluate Productivity**
- 8** **Evaluate Versatility**
- 10** **Evaluate Value**
- 11** **Evaluate User Friendliness**

Section 3: Configuration Summary, Specifications, Supplies, Support and Information Sources

- 13** **Configuration Summary**
- 14** **Specifications**
- 15** **Supplies, Options and Extended Service Agreements**
- 16** **Support and Information Sources**

Section 1: Introducing the Xerox Phaser 6128MFP Multifunction Printer Colour Laser Printer

Product Overview

Meet your new office assistant. Office and environmentally friendly, this compact multifunction printer delivers all your documents in rich, full colour. Reliable, efficient and network ready, you'll find it's the perfect office partner. Ideal for personal or small workteam use.

The right tools for your job

The Phaser 6128MFP is your new personal assistant, ready to help you impress your customers, communicate and organise your office.

- **Full-colour attracts attention to all your documents**, giving you the competitive advantage of colour and maximising understanding and retention.
- **Fast 12 ppm colour/16 ppm black and white output** means the Phaser 6128MFP can handle the demands of busy individuals or small workteams without slowing down.
- **Fax with ease.** Send faxes from the network using LAN Fax, or take advantage of full walkup fax features such as speed dial, remote receive and fax broadcast.
- **Out of toner?** Our Run Black feature lets you continue printing with black until you can replace colour toner.
- **Powerful copy/scan features.** Xerox Scan to PC Desktop® software lets you scan and copy paper documents in colour and black and white, and save them as editable documents on the network, in desktop folders or into email.
- **Keep confidential documents safe** with password-protected secure print and secure fax receive.
- **Control costs** by limiting access to colour print using an auditron.

All-in-one simplicity

With or without IT expertise or support, the Phaser 6128MFP is easy to set-up, deploy and use.

- **Large, intuitive front panel** with easily understood instructions and help screens to streamline walkup operations.
- **Load paper less often.** The main paper tray holds a generous 250 sheets.
- **Built-in networking tools** quickly connect this printer to everyone on the network, regardless of platform. Or connect directly via USB.
- **PrintingScout® (Windows only) automatically looks ahead** to warn of potential problems with your print job and suggest a remedy.
- **Easy installation** with premium Xerox management tools including CentreWare® Internet Services, which lets you set up and manage the printer from your PC.
- **Reliability and support you can count on.** Take advantage of advanced Xerox engineering and outstanding reliability plus a one-year on-site warranty.

Easy on your environment

The Phaser 6128MFP is designed to save resources, reducing your office costs as well as helping your office stay environmentally-friendly.

- **Reduces waste.** Generates up to 90 percent less waste than comparable colour laser printers under normal operating conditions.
- **Xerox Emulsion Aggregation toner technology:** It uses less power during the fusing process and its chemically made toner results in lower CO2 emissions.

- **Takes up less space in the office.** A small footprint makes it easy to add to your desktop, or a convenient central location for shared use.
- **Saves on storage space.** Smaller toner cartridges with minimal packaging use less precious office storage space.
- **Less noise pollution.** Engineered for extra-quiet operation to minimise impact on busy offices.
- **Consolidate and save.** Consolidate your office printers into one value-packed multifunction printer and you'll save on energy and supplies costs.
- **Printer access control** helps you manage who prints colour and how much.

Phaser® 6128MFP
Quick Facts

- 12 ppm colour/
16 ppm black and white
- Built-in networking
- 251-sheet paper capacity
- PCL6 support
- 384 MB memory



Print / Copy / Scan / Fax / Email



A4



12 ppm colour

WxDxH:
425 mm x 507 mm x 585 mm
Weight: 29 kg



Xerox Phaser 6128MFP Multifunction Printer Configurations



Print Performance:

- Print Speed – Up to 12 ppm colour, 16 ppm black and white
- First-Page-Out Time – As fast as 17 seconds colour, 14 seconds black and white
- Resolution – Up to 600 x 600 dpi
- Language Support –PCL® 6 emulation (host-based for Mac and Linux)

Controller:

- Processor – 400 MHz
- Memory – 384 MB

Connectivity:

- Network – 10/100Base-TX Ethernet
- Direct Connect – USB 2.0

Paper Capacity

- Tray – 250 sheets
- Manual Feed Slot – 1 sheet
- Automatic Document Feeder (ADF) – 35 sheets

Paper Handling:

- Supported Sizes
 - Tray – Custom sizes from 76.2 x 127 mm to 215.9 x 355.6 mm
 - Manual Feed Slot – Custom sizes from 76.2 x 127 mm to 215.9 x 355.6 mm
 - ADF – Custom sizes from 139.7 x 139.7 mm to 215.9 x 355.6 mm
- Supported Weights
 - Tray and Manual Feed Slot – 60 – 216 gsm
 - ADF – 50 to 125 gsm
- Media Types – Plain paper, glossy, business cards, envelopes, labels, card stock

Print Features:

- Manual two-sided, Secure Print, Proof Print, RAM collation, N-up, Fit to new page size, Custom page size defaults, Run black, toner remaining gauges, Draft mode, Booklet printing*, Poster printing*, Watermarks*, Overlays*
- Support Global Print Driver (basic printing only)

Security:

- Secure Fax Receive, Secure Print, Colour Access Control, IP Filtering, Scan to Email with authentication

Reliability:

- Duty Cycle – Up to 40,000 pages per month
- Warranty – One-year on-site

Cost saving features:

- N-Up, Draft mode in PCL driver
- Out of toner? our Run Black feature lets you continue printing with black until you can replace colour toner
- Low power mode, ID card copy, delay send fax
- Cost control with Auditron : it controls which job can be printed out based on the predefined user information. Only administrator can set the limitation per user through EWS. User name and password need to be entered on the printer driver, then will be decided whether to print or not. Up to 50 users can be managed.

* Available on Windows/PCL driver only

Optional

- Wireless network adaptor*
- The wireless network adaptor allows any Ethernet-enabled Phaser® printer or multifunction printer to become an 802.11b/g wireless network device, giving the freedom to position the printer anywhere in the office.
- This option is common across our range.

* Except for Switzerland and Denmark.



Section 2: Evaluating Colour Laser Multifunction Printers

Overview

Based on continuous study of our customers' productivity requirements, Xerox recommends that the following criteria be used when evaluating which colour multifunction printer to purchase for your office.

Productivity

Can the multifunction printer keep up with the demands of your daily and monthly print volumes?

Versatility

Does the multifunction printer deliver the office capabilities you require?

Value

Does the multifunction printer's purchase price include advanced colour capabilities, powerful features and the flexibility to handle a variety of office print jobs?

User Friendliness

Is the multifunction printer simple to deploy and manage, and will it be easy for your employees to use?

This section examines each of the above evaluation criteria in greater detail, covering the specific features and performance attributes you should look for in a colour multifunction printer. When the same criteria are used to evaluate every printer under consideration, you'll see how the Phaser 6128MFP colour multifunction printer excels against other manufacturers' comparable products.

Evaluate Productivity

Productivity is a critical consideration when evaluating which colour multifunction printer to purchase for your office. Does the multifunction printer deliver the level of performance required to support the demands of busy users? In addition to print engine speed, consider other attributes that affect overall throughput. Will your documents be printed with the image quality users need? Does the multifunction printer feature the connectivity choices your office requires? Is device-status information available at both the multifunction printer and a user's desktop?

How the Phaser 6128MFP multifunction printer exceeds the productivity requirement:

Performance

The Phaser 6128MFP multifunction printer offers a higher level of performance compared to other printers in its class of product. It delivers a colour print speed of up to 12 ppm and a black and white print speed of up to 16 ppm – easily keeping pace with your team's printing workload.

For average print jobs of three pages or less, the most important specification is first-page-out-time, and the Phaser 6128MFP multifunction printer delivers in as few as 14 seconds. Plus, even complex print jobs are processed quickly and reliably by the Phaser 6128MFP multifunction printer, which features a 400 MHz processor and 384 MB of memory. The product is almost available immediately thanks to a fast warm up time of 27 seconds.

The Phaser 6128MFP is a single pass product: it means that all colours are applied at once enabling the unit to go 4 times faster than a four-pass machines and will be less noisy.

Image quality

Whether printing large files like PowerPoint presentations or files with extensive graphics and photos, or simple files like email messages or text-only documents, the Phaser 6128MFP multifunction printer delivers impressive results with 600 x 600 dpi image quality. When scanning, the Phaser 6128MFP is capable of producing image quality of up to 9600 dpi enhanced resolution.

Plus, the award-winning, Xerox-exclusive EA toner produces outstanding laser colour quality with superior detail and clarity that enhance marketing and internal communications material.

Network performance

The Phaser 6128MFP multifunction printer's performance isn't limited to raw document feeds and speeds. With a controller that includes a 400 MHz processor, 384 MB of memory, and standard support for USB 2.0 and 10/100Base-TX Ethernet connectivity, the Phaser 6128MFP multifunction printer quickly processes jobs while minimizing network traffic.

Monitoring system status

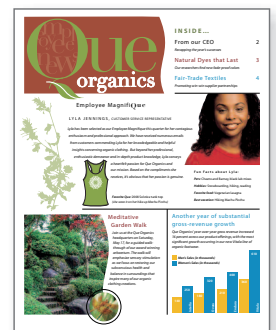
Whether at your desk or at the Phaser 6128MFP multifunction printer's front panel, current information is available on every job the multifunction printer processes as well as in-depth device status. See the list of jobs currently in the print queue, the number of daily outgoing fax transmissions, paper-level status, and total page output counts without leaving your desk via CentreWare IS or the print driver, or via the multifunction printer's front panel.



What is EA toner?

Xerox is the leading innovator in toner and photoreceptor technology.

From its pioneering work with carbon-based organic toner formulations in the 1950s – creating the copier marketplace – to current work with chemically grown EA toner. Xerox has consistently set the pace for the industry. Emulsion Aggregate (EA) Toner is grown, rather than ground, to very small and consistent particles. It requires no fuser oil.



The Phaser 6128MFP produces vivid colour and precise detail with up to 600 x 600 dpi image quality.

Evaluate Versatility

How many functions can the multifunction printer perform? Does the integration of multiple functions into a single device result in the multifunction printer sacrificing important capabilities, such as print or copy performance? Does multifunction printer deliver a level of all-around performance that will enable the replacement of multiple devices on your network? Does the multifunction printer include support for the types of media users utilise on a regular basis?

How the Phaser 6128MFP multifunction printer exceeds the versatility requirement:

Printing

The Phaser 6128MFP multifunction printer offers a higher level of performance compared to other printers in its class. It delivers a colour print speed of up to 12 ppm and a black and white print speed of up to 16 ppm – easily keeping pace with you or your team’s printing workload.

For average print jobs of three pages or less, the most important specification is first-page-out-time, and the Phaser 6128MFP multifunction printer delivers in as few as 14 seconds. Plus, even complex print jobs are processed quickly by the Phaser 6128MFP multifunction printer, which features a 400 MHz processor and 384 MB of memory.

Advanced print features

The Phaser 6128MFP multifunction printer is packed with advanced print features that you might be surprised to find on a printer that’s so value-priced. Expand the print capabilities of your office, with advanced features including:

- Booklet printing¹ – Formats printed documents, such as brochures or handouts, for folding into booklets
- N-up printing – Prints multiple pages on each page, which is especially convenient when printing presentations
- Poster printing¹ – Enlarges images by printing onto multiple sheets of paper
- Proof print – Prints the first set of a multiple-set job, so you can make sure you’ve got the right print settings before releasing the remaining sets to be printed
- RAM collation – Collates print jobs consisting of multiple sets of multi-page documents, which eliminates the need to manually collate documents after the job is completed
- Secure print – Holds the job at the printer until you release it with a specified 4-digit PIN code, which ensures that sensitive or confidential files are not exposed in the output tray
- Skip blank pages – Conserve paper and supplies by skipping blank pages within a document
- Watermarks¹ – Adds watermarks to denote “Confidential” or “Draft” documents

¹ via PCL® driver only

Copy features

As with printing, the Phaser 6128MFP multifunction printer is a highly productive copier for busy professionals and small workteams. With copy speeds of up to 12 ppm colour and up to 16 ppm black and white, a first-copy-out time as fast as 27 seconds colour and 18 seconds black and white, the Phaser 6128MFP is a true office performer.



Secure Print – one of many advanced print features found on the Phaser 6128MFP – holds sensitive documents until released by the job owner via the intuitive front panel user interface.

Beyond speed, the Phaser 6128MFP multifunction printer also delivers a strong set of copy features:

- **Collation:** automatic (via ADF only)
- **ID card copy:** copies both sides of an ID card onto a single sheet of paper
- **N-up:** saves paper by printing multiple pages onto each sheet
- **Reduce/Enlarge:** 25 to 400 % from both the platen and the ADF with 10 preset zooms
- **Poster:** enlarges an image by copying it onto multiple pages

Scan features

The Phaser 6128MFP multifunction printer includes powerful scanning that helps streamline your company's work processes, serving as a digital on-ramp for distributing, editing and archiving hard-copy documents. Built-in file formats include PDF, JPEG and TIFF, and the 35-sheet Automatic Document Feeder automates the scanning of lengthy documents, scanning pages as quickly as 12 ppm colour, and 16 ppm black and white.

The Phaser 6128MFP multifunction printer offers a number of scan destinations to support your work processes, including:

- **Scan to Email:** sends scans to email recipients, with authentication to connect to your network or ISP
- **Network Scanning:** enables distribution of scanned images to multiple predefined locations
- **Direct Scan to Applications:** sends scanned images to a variety of software applications, such as the included Optical Character Recognition utility.

In addition, the Phaser 6128MFP multifunction printer is packaged with Xerox Scan to PC Desktop® Personal Edition scan software, which includes the following applications:

- **Nuance® PaperPort® SE 11.0:** simplifies the scanning, organising and sharing of documents
- **OmniPage® 4.0 SE:** converts paper documents into editable Word and Excel files
- **Image Retriever Professional 6.0:** automates retrieval of scanned images from Xerox devices

Fax features

The Phaser 6128MFP includes a set of fax capabilities you'd expect to find on dedicated fax systems, including:

- **Walk-up fax:** traditional one-line, 33.6 Kbps phone-line faxing via front panel
- **LAN fax:** transmits faxes digitally from desktop computers via print driver
- **Fax forwarding:** distributes received faxes to other fax devices for archiving and distribution
- **Compression:** MH, MR, MMR, JBIG, JPEG
- **Resolution:** 400 x 400 dpi
- **Secure fax receive:** holds incoming faxes until PIN is entered at the device by the intended recipient
- **Polling:** stores fax documents in the multifunction printer's memory for retrieval by another remote fax machine
- **Fax broadcast:** sends faxes to multiple destinations at once
- **Address Book:** allows fast access to up to 200 speed dials and 6 group dials (walk-up fax) or 500 speed dials and 500 group dials (LAN fax)



The Phaser 6128MFP features a platen glass for single-sheet scanning and copying, plus a standard 35-sheet Automatic Document Feeder for larger scan and copy jobs.

Evaluate Value

In addition to purchase price, a colour multifunction printer's overall value is based on several factors. Does the multifunction printer deliver advanced colour capabilities you'd normally expect to find with more expensive products? Does it offer the power and media flexibility your workgroup needs to stay productive in a fast-paced business environment?

How the Phaser 6128MFP multifunction printer exceeds the value requirement:

Colour quality and print resolution

The ability to produce vibrant colour and crisp, fine-line detail involves many attributes of a colour printer. The Phaser 6128MFP multifunction printer delivers up to 600 x 600 dpi resolution, while EA toner produces outstanding laser colour quality, and superior detail and clarity. Plus, PANTONE® Colour approved solid-colour simulations, Xerox colour correction technology and simple calibration tools automatically give you the right colour, or let you fine-tune colours for special applications.

Media support

The Phaser 6128MFP multifunction printer prints on a wide variety of media, including plain printer paper, labels, envelopes, card stock, business cards and glossy. Support for a range of media sizes and weights means users have flexibility when producing important business materials in-house. Media support includes:

Media Size:

- Tray and Manual Feed Slot – Custom sizes from 76.2 x 127 mm to 215.9 x 355.6 mm
- ADF – Custom sizes from 139.7 x 139.7 mm to 215.9 x 355.6 mm

Media Weights:

- Tray and Manual Feed Slot – 60 – 216 gsm
- ADF – 50 to 125 gsm

Environmental features

- It generates **90% less waste than comparable colour laser multifunction printers** (based on the packaging and the consumables that need to be disposed of). The cartridge is toner-only – it is not an integrated print cartridge where toner and drum are combined. This means the cartridge is very small and lightweight, and with no drum integrated there is much less to dispose of when the cartridges are spent.
- **EA toner technology:** It uses less power during the fusing process and its chemically made toner results in lower CO2 emissions
- **Energy Star qualified**
- **Low power mode**
- Consumables are part of the **Xerox Green World Alliance Supplies Recycling Programme:** stay green by returning your used toner cartridges to us for recycling – free of charge



Adding paper is fast and easy, and the Phaser 6128MFP supports a wide variety of media weights and sizes.

Evaluate User Friendliness

Deploying a new multifunction printer can be challenging, whether in a large organisation or small office. The process includes integrating the device into your existing network infrastructure and deploying print drivers to users' computers. And because most small businesses have limited access to IT resources, it's important that the multifunction printer you purchase is easy to manage. Evaluate the tools delivered with the device, and whether they will ease the task of day-to-day management. Lastly, think about ease of use. Is the multifunction printer simple to operate, and will users quickly feel comfortable using it? Are the user interfaces, both the front panel and print driver, well designed and easy to navigate?

How the Phaser 6128MFP multifunction printer exceeds the user friendliness requirement:

Installation

Easy installation starts with unpacking the printer and ends when it's powered up and ready for use. The Phaser 6128MFP multifunction printer is easily removed from its packaging, and the included quick install guide helps set up the device, connect the multifunction printer to your network and a power source, and power-up the device. The multifunction printer will automatically be assigned an IP address and join the network via DHCP (other networking protocols can be set at the front panel), and printer settings such as language selection and feature setup are completed either at the front panel or via remote management software like Xerox CentreWare® Internet Services (CentreWare IS) or CentreWare Web.

Driver deployment

Installing print drivers onto users' computers is a fast, easy process. Simply insert the Phaser 6128MFP multifunction printer installation CD and follow the prompts. Or, users can enter the printer's IP address into any standard web browser and download and install print drivers using the Phaser 6128MFP multifunction printer CentreWare IS page.

Day-to-day management

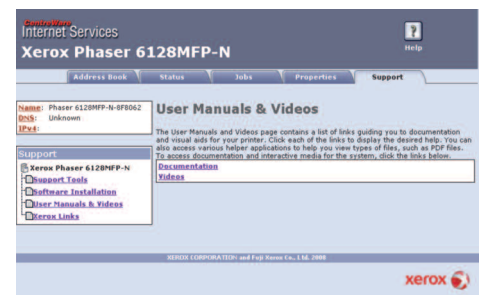
Xerox provides a set of tools and utilities to ease the ongoing management and administration of the Phaser 6128MFP multifunction printer. Whether you are managing a single device or a group of networked printers and multifunction printers, Xerox makes life easier.

- **CentreWare IS** – CentreWare IS is an embedded web server that allows users to connect to the Phaser 6128MFP multifunction printer via any standard web browser to monitor printer status, view the print job queue, manage settings, properties and the scan and fax address books, and access troubleshooting and support resources.
- **Xerox CentreWare Web** – Office environments that have multiple printers and multifunction printers connected to their networks can install, monitor, configure, track usage and troubleshoot from their computer via one convenient and powerful web application. Additionally, the interoperability of CentreWare Web means it can be used to monitor non-Xerox printers as well.

Print Drivers

The Phaser 6128MFP multifunction printer laser printer includes a PCL® 6 emulation print driver, and offers with host-based print drivers for Mac and Linux.

Plus, the Phaser 6128MFP multifunction printer supports the Xerox Global Print Driver, a new print-driver innovation that can greatly simplify installing, managing and supporting printers and multifunction printers on the network.



CentreWare IS helps users quickly install, configure and troubleshoot the 6128MFP multifunction printer.

The print drivers also provide bi-directional information such as system status, consumable status, job status, currently loaded paper sizes, installed options and more.

Troubleshooting

To avoid downtime and maximise productivity, the Phaser 6128MFP multifunction printer includes these convenient, proactive troubleshooting tools to help you keep your printer up and running:

- PrintingScout™ (Windows only) – Saves precious time by tracking print jobs and providing immediate print-issue alerts with instructions on how to resolve problems.
- Online Support Assistant – Access online troubleshooting information from the same Knowledge Base library used by Xerox customer support professionals, directly from CentreWare IS.

Section 3: Configuration Summary, Specifications, Supplies, Support and Information Sources

Configuration Summary

The following sections provide details about the various Phaser 6128MFP configurations, available options and supplies and more helpful information.



	6128MFP/N
Speed	Up to 12 ppm colour / 16 ppm black and white (A4)
Duty Cycle	Up to 40,000 pages / month
Paper Handling	Automatic Document Feeder (ADF): 35 sheets; Custom Sizes: 139.7 x 139.7 mm to 215.9 x 355.6 mm Manual Feed Slot: 1 sheet; Custom sizes: 76.2 x 127 mm to 215.9 x 355.6 mm Tray: 250 sheets; Custom sizes: 76.2 x 127 mm to 215.9 x 355.6 mm
Paper input	
Paper output	150 sheets face down
Print	
First-page-out-time	As fast as 17 seconds colour / 14 seconds black and white
Print resolution (max)	Up to 600 x 600 dpi
Processor / PDL support	400 MHz / PCL® 6 emulation (host-based for Mac and Linux)
Memory	384 MB
Connectivity	USB 2.0, 10/100Base-TX Ethernet
Print features	Manual two-sided, Secure Print, Proof Print, RAM collation, Skip blank pages, N-up printing, Fit to new page size, Custom page size defaults, Booklet printing*, Watermarks*, Poster*, Overlay*, Toner remaining gauges, Draft mode
Copy	
First-page-out-time	As fast as 27 seconds colour / 18 seconds black and white
Copy resolution (max)	600 x 600 dpi
Copy features	Reduce/enlarge (25% -400%), N-up copying, poster, auto fit, cloning, collate, ID Card Copy
Fax	
Fax features	33.6 Kbps with MH/MR/MMR/JBIG/JPEG compression, secure fax receive, lighter/darker, polling, remote receive (with external phone), junk fax protection, fax forwarding, delay send, broadcast, address book (up to 200 speed dials, 6 group dials), resolution up to 400 x 400 dpi
LAN Fax features	Delay send, broadcast, zoom (25% -400%), auto fit, rotation, N-up, watermark*, address book (up to 500 speed dials, up to 500 group dials)
Scan	
Scan destinations	Scan to Email (up to 100 email addresses, up to 10 email groups), Network Scanning via FTP (server) and SMB (server or computer), Direct Scan to Applications including OCR (software included)
Scan features	JPG/TIFF/PDF file formats (USB scanning adds BMP), Up to 600 dpi (network) / 1200 dpi optical resolution (9600 dpi enhanced) (USB), Scan to PC Desktop® Personal Edition
Security	
	Secure fax receive, Secure print, Device access control, IP Filtering, Scan to Email with authentication
Warranty	
	One-year on-site warranty, plus optional service extensions available

*Available on Windows/PCL driver only

Specifications

Specifications	
Printer Management	Phaser Installer, CentreWare® IS Embedded Web Server, CentreWare Web, PrintingScout™ (Windows only), Email alerts
Print Driver Support	Apple®: Mac OS® version 10.3 and above Linux®: Red Hat®, SUSE™* Microsoft: Windows® 2000 (SP3 or greater) / XP / Vista, Server 2003/2008 Universal: Xerox Global Print Driver * Host-based drivers
Media Handling	
Supported Sizes	<ul style="list-style-type: none"> • Tray and Manual Feed Slot – Custom sizes from 76.2 x 127 mm to 215.9 x 355.6 mm • ADF – Custom sizes from 139.7 x 139.7 mm to 215.9 x 355.6 mm
Supported Weights	<ul style="list-style-type: none"> • Tray and Manual Feed Slot – 60 – 216 gsm • ADF – 50 to 125 gsm
Operating Environment	Temperature: <ul style="list-style-type: none"> • Storage: -20° to 40° Celsius • Operating: 10° to 32° Celsius Relative Humidity: <ul style="list-style-type: none"> • Storage: 10% to 85% • Operating: 10% to 85% Sound Power Levels: <ul style="list-style-type: none"> • Printing: 6.22 B • Standby: 3.03 B
Electrical	220–240 VAC, 50/60 Hz Power Consumption: <ul style="list-style-type: none"> • Power Save: 18.4 W • Standby: 60 W • Printing: 360 W ENERGY STAR® qualified
Dimensions (Width x Depth x Height)	425 x 507 x 585 mm; weight: 29 kg
Certification	FCC Part 15, Class B Listed UL 60950-1/CSA 60950-1-03 CE Mark applicable to Directives 73/23/EEC and 89/336/EEC, Section 508 ADA

Supplies, Options and Extended Service Agreements

	Part Number	Description	Capacity
Supplies	106R01452	Standard Capacity Cyan Toner Cartridge	Average 2,500 standard pages ¹
	106R01453	Standard Capacity Magenta Toner Cartridge	Average 2,500 standard pages ¹
	106R01454	Standard Capacity Yellow Toner Cartridge	Average 2,500 standard pages ¹
	106R01455	Standard Capacity Black Toner Cartridge	Average 3,100 standard pages ¹
Options	097S03741	Wireless Network Adaptor with European Power Converter ²	
	097S03742	Wireless Network Adaptor with UK Power Converter	
Extended Service Agreements	6128MFPE2	1-year extended on-site service (total 2 years on-site when combined with 1 year warranty)*	
	6128MFPE3	2-year extended on site service (total 3 years on site when combined with 1 year warranty)*	

¹ Average standard pages. Declared yield in accordance with ISO/IEC 19798. Yield will vary based on image, area coverage and print mode.

² Not available to Switzerland and Denmark.

* Available for purchase during first 90 days of product ownership.

Support and Information Sources

Unrivalled Service and Support

Behind every Xerox product is a large network of customer support that's unrivalled in the industry and available when you need it. Xerox service professionals use leading-edge technologies to keep you up and running. They're even linked to the engineers who designed your product, so you can be confident when you choose Xerox. And genuine Xerox supplies are always easily available.

Xerox Office Services Support

Asset Management Services

- Asset Optimisation and Tracking – Process and tools to optimise an enterprise's office output infrastructure and reduce overall costs.
- Break-Fix Management – Single point of ownership and management for break-fix service for all brands of office output printers

Imaging and Output Management Services

- Output Management – Single point of management for office output from all output printers – regardless of manufacturer
- Image Capture and Workflow – Cost-efficient solutions for capturing, managing, retrieving and distributing information into digital repositories.

Support Services

- Technology Procurement and Deployment – A creative and flexible end-to-end print/computer product acquisition solution that uses a single-point-of-contact model, while lowering the total cost of acquisition.
- Help Desk Services – A broad range of enterprise services managed through a single point of contact and delivered through an on-site or off-site model.
- End User Services – Microsoft software implementation, IT project consulting and customer education.

Access Managed Services

- Student and Library Patron Access – Custom designed and implemented customer-managed solutions for student and library patron print-access management.

Additional Information Sources

What's in the Box

- Phaser 6128MFP multifunction printer
- Print Cartridge (1,000 (CMY) print capacity¹, 1,000 (K) print capacity¹)
- Software and Documentation CD (with User Manual, Quick Installation Guide, Registration Card, Warranty Statement)
- Power cord

¹ Average standard pages. Declared Yield in accordance with ISO/IEC 19798. Yield will vary based on image, area coverage and print mode.

Phaser 6128MFP Multifunction Printer Front Panel:

- The Front Panel provides tools and information pages to help with machine setup, feature selections, operational problems, media feed and supply issues.

On the Web

Visit www.xerox.com/office for:

- Product, supply and support information
- Downloading drivers
- Finding your local Xerox sales representative
- Online documentation

Visit www.xerox.com/office/support for:

- Support and service information, including the same troubleshooting Knowledge Base used by Xerox Customer Support staff to provide the latest technical information on:
 - Application issues
 - Errors
 - Print-quality issues
 - Troubleshooting

Questions? Comments? Problems?

If for any reason you need to contact your Xerox sales representative, please call or visit us on the web at www.xerox.com/office.

