



CLEANENERGY

FUELING PRODUCTS

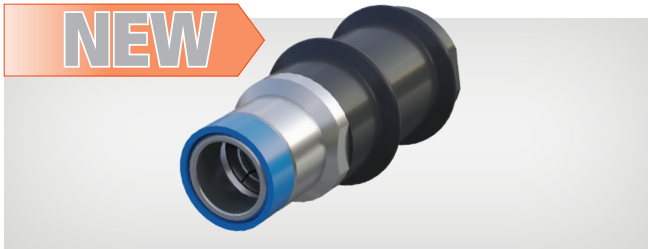
We are dedicated to continuous innovation in the design, engineering and manufacture of high-quality components used for alternative fueling applications, such as CNG (compressed natural gas). A division of OPW, the global leader in fueling solutions since 1892, CleanEnergy Fueling Products is a name synonymous with innovation, quality, reliability and customer service. OPW CleanEnergy Fueling Products offers you a complete selection of alternative fueling products to meet your specification. Each product is designed and built to exacting standards for your fueling safety and efficiency.





CNG Fueling Nozzles (NGV1 & ISO14469)

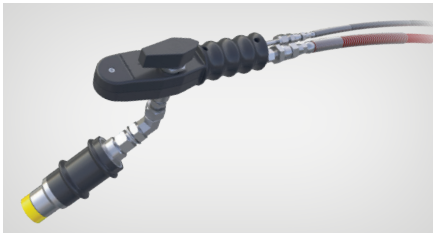
OPW CleanEnergy Fueling Products offers an extensive line of CNG Fueling Nozzles to meet a wide variety of fueling applications. OPW CNG nozzles are used throughout the world.



NT2AP30 (Type 2 or 3)

The NEW NT2A Series Nozzle is designed to be versatile for all of your Type-2 CNG-fueling applications. The NT2A has true Class-A specified durability and will optimize your time-fill, fast-fill and fleet-fueling sites. The ergonomic design, positive locking jaws and best-in-class internal seals will make this nozzle the preferred choice of your operators.

NT2AP36 (Type 2 or 3)



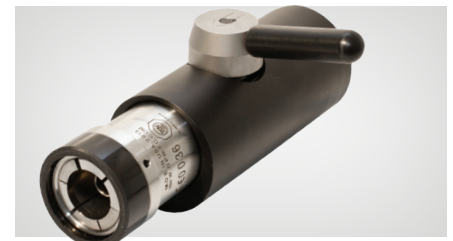
CNG Type-2 Fueling System

The OPW CleanEnergy CNG 3-Way Valve and Type-2 Nozzle features the latest in industrial and commercial fueling innovations. A fueling system which bridges the gap between convenience and comfort, without sacrificing flow or reliability. Ergonomically designed to be easy to use and prevent unnecessary wear and tear during the fueling process.



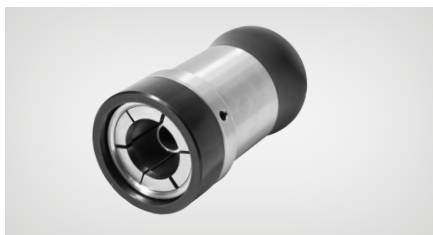
1000 Series (Type 1)

OPW 1000 Series Self-Service Nozzles are designed for high-flow public and private CNG-fueling systems. Applications include quick-fill, self-service fueling of automobiles, light trucks, shuttle buses and vans.



5000 Series (Type 1)

OPW 5000 Series Nozzles are designed for extremely high-flow public and private CNG-fueling systems. Applications include quick-fill, self-service fueling of transit buses and large trucks.



6000 Series (Type 2)

OPW 6000 Series Nozzles are designed for extremely high-flow public and private CNG-fueling systems when connected to OPW CL50 series receptacles. Applications include quick-fill, self-service fueling of transit buses and large trucks.



BDN Vehicle-Defueling Nozzle

OPW has developed this tool to safely depressurize vehicles. This valve can also be used to transfer fuel from one vehicle to another in the event of a breakdown on the side of the road, or be used in areas where no refueling station is available.

OPW Listings and Certifications

Every year we introduce more safety and environmental-protection innovations to the industry than any other petroleum equipment manufacturer. Leading-edge innovations such as the new 1-2200™ single-wall replaceable spill container, 68EZR™ reconnectable breakaway, Fibrelite covers and tank sumps, decommissioning hanging hardware kits, the SiteSentinel®

Integra 100™ automated tank-gauge systems all serve to illustrate how OPW is **Leading the Way** in helping to protect the well-being of people and the environment – today, tomorrow and into the future. That's the nature of OPW.



OPW products may hold one or more listings or certifications with the following agencies:



OPW is a member of the following associations:



NFPA (National Fire Protection Agency) National Association of Convenience Stores



Underground Products Fuel-Compatibility Matrix

Refer to individual product pages for specific model certifications and approvals

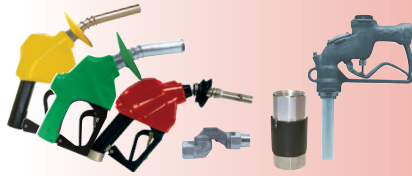
Updated 08/2023

OPW Product Number	Description	Standard Fuels: ≤15% Ethanol Gasoline ≤5% Biodiesel*	High Ethanol Content Gasoline: 15-100% Ethanol	High Biodiesel Content 5-20% Biodiesel*	High Biodiesel Content 5-100% Biodiesel*	Av-Gas/ Jet Fuel	Kerosene/ Fuel Oil	DEF (Diesel Exhaust Fluid)	CARB EVR
CXXA Double Wall Piping	Double Wall Primary Piping	X	X	X	X	X	X	X	
V20 Vent Piping	Double Wall Vent Piping	X	X	X	X	X	X	X	
DPC Series	Double Wall Pipe Couplings	X	X	X	X	X	X		
SPC Series	Single Wall Pipe Coupling	X	X	X	X	X	X		
SBC Series	Stainless-Steel Swivel Bolt On Coupling	X	X	X	X	X	X	X	
SMA-1515, SMA-1520, SMA-2020, SMA-3030	E-Coated Male Adaptors	X	X	X	X	X	X		
SMA-7575, SMA-1010	Swivel Male Adaptor (Brass or Zinc Plated)	X					X		
STF-1515, STF-2020, STF-2215, STF-2020	E-Coated Swivel Tees	X	X	X	X	X	X		
SFA-7575, SFA-1010	Swivel Female Adaptor (Brass or Zinc Plated)	X					X		
SEF-1515, SRE-2015, SEF-2020, SEF-3030	E-Coated Swivel Elbows	X	X	X	X	X	X		
Polyethylene and Fiberglass Sumps	Dispenser, Tank, Loop, and Transition Sumps	X	X	X	X	X	X	X	
REF & HEF Series Entry Fittings	Entry Fittings	X	X	X	X	X	X	X	
1-2100 Series / Multiports / 1-2200 Series	Spill Containers	X	X	X	X	X	X	***	X
FibreTite Multiports	Spill Containers	X	X	X	X	X	X	***	X
101BG-Series	Spill Containers	X	X	X	X	X	X	***	
1-3100 Series (Edge)	Double Wall & Single Wall Spill Container Series	X	X	X	X	X	X	***	X
60V Series	Vapor Line Shear Valve	X	X	X	X	X	X		X
10 Series	Emergency Shut Off Valve	X							
10 Plus RF	Emergency Shut Off Valve	X	X	X	X	X	X		
10 Plus Series	Emergency Shut Off Valve	X				X	X		
60V-DEF-SS	DEF Series Shear Valve							X	
61SALP & E85 Series	Fill Swivel Adaptor	X	X	X	X	X	X		X
633T-8076	Fill Adaptor	X	X	X	X	X	X		
61VSA & E85 Series	Vapor Swivel Adaptor	X	X	X	X	X	X		X
1611AVB-1625	Vapor Adaptor	X	X	X	X	X	X		
634TT-7085-EVR	Fill Cap	X	X	X	X	X	X		X
1711T-7085-EVR	Vapor Cap	X	X	X	X	X	X		X
634LPC-040	Low Profile Fill Cap	X	X	X	X	X	X		X
1711LPC-0300	Low Profile Vapor Cap	X	X	X	X	X	X		X
62M & E85 Series	Monitoring Probe Cap	X	X	X	X	X	X	X	
61SO & 71SO Series	Overfill Valve	X				X	X		
61SOM & 71SOM Series	Overfill Valve Anodized	X	X			X	X		X
71SO-B Series	High BioDiesel Overfill Valve	X		X	X	X	X		
6111 & 61TP Series	Tank Bottom Protectors	X				X	X		
61T Series	Drop Tubes	X				X	X		X
61T-SS Series	Stainless-Steel Drop Tube	X	X	X	X	X	X		
61T-DEF Series	Stainless-Steel DEF Drop Tube							X	
233 Series	Extractor Valve	X	X	X	X	X	X	X	X
FCXX Series	Stainless Flex Connectors	X	X	X	X	X	X	X	
53VML/30MV Series	Ball Floats	X	X	X	X	X	X		X
523V Series	Pressure Vacuum Vent	X	X	X	X	X	X	X	
623V Series	Pressure Vacuum Vent	X	X	X	X	X	X	X	
723V Series	EVR Pressure Vacuum Vent	X	X	X	X	X	X	X	X

* Biodiesel must meet ASTM Standard for fuel quality to maintain compatibility with products above

*** Drain-plug versions compatible with DEF if installed with Stainless-Steel Drop Tube between Nipple and Fill Adaptor

≤ Refers to less than or equal to the fuel-standard rating for percentage of content



Aboveground Products Fuel-Compatibility Matrix

Refer to individual product pages for
specific model certifications and approvals

Updated 08/2023

OPW Product Number	Description	Unleaded Fuels up to 10% Ethanol (≤E10)	Petroleum Diesel	Up to 25% Ethanol (≤E25)	Up to 85% Ethanol (≤E85)	Up to 100% Ethanol (≤E100)	Biodiesel		Av-Gas	Jet Fuel	Kerosene/ Fuel Oil	CARB
							Up to 5% (≤B5)	Up to 20% (≤B20)				
11A & 11AF Series	Automatic Conventional Nozzles / Farm Nozzles		UL/ULC				UL	UL			X	
11AP & 11APF Series	Automatic Conventional Nozzles / Farm Nozzles	UL/ULC		UL/ULC								
11B Series	Pressure Sensing Automatic Conventional Nozzles		UL/ULC				UL	UL			X	
11BP & 11BP E25 & E85 Series	Pressure Sensing Automatic/ Nickel Plated Conventional Nozzles	UL/ULC		UL/ULC	UL	X						
7H & 7HB Series	Automatic High Flow Conventional Nozzles / Pressure Sensing Automatic High Flow Conventional Nozzles		UL/ULC				UL	UL			X	
12VW Series	Vacuum Assist Nozzles	UL										
14E	Automatic Nozzles	UL/ULC										X
14BP	Automatic Nozzles	UL/ULC										
14C, 14HC	Automatic Nozzles		UL/ULC				UL/ULC	UL/ULC				
66V & 66V-0492 Series	Breakaway/ Nickel Plated (Single Use)	UL/ULC	UL/ULC	UL	UL	X	UL	UL				
66REC	Breakaway (Reconnectable)	UL/ULC	UL/ULC									
68EZR Break-away	Various Reconnectable and Single Use Vac Assist Breakaways	UL/ULC	UL/ULC	UL			UL	X			X	
66SB	Swivel Breakaway	UL/ULC	UL/ULC									
241 & 241TPS-0492 Swivels	Two Plane/ Nickel Plated Hose Swivels	UL/ULC	UL/ULC	UL	UL	X	UL	UL			X	
45 Swivels	Two Plane Hose Swivels	UL/ULC	UL/ULC	UL			UL	UL			X	
36S Swivels	Straight Swivels	UL	UL				X	X			X	
25 Swivels	Bulk Straight Swivel	X	X	X			X	X	X	X	X	
311 Series	General Duty Manual Nozzles	UL	UL				X	X			X	
190/210/295SC Series	Manual Bulk Nozzles	X	X	X			X	X			X	
295SAJ	Manual Jet Fuel Nozzle								X	X	X	
295SA/SAC Series	Manual Av-Gas Nozzles	X		X					X	X	X	
1290 Series	Automatic Bulk Fueling Nozzles	X	X	X			X	X			X	
1291 Series	Automatic Bulk Fueling Nozzles	ULC	ULC				ULC				ULC	

UL - UL listed X - Compatible ULC - UL Canada



Aboveground Storage Tank Equipment Fuel-Compatibility Matrix

Refer to individual product pages for specific model certifications and approvals

Updated 08/2023

OPW Product Number	Description	Unleaded Fuels up to 10% Ethanol (≤E10)	Up to 25% Ethanol (≤E25)	Up to 85% Ethanol (≤E85)	Petroleum Diesel	Biodiesel		Av-Gas	Jet Fuel	Kerosene/ Fuel Oil	CARB
						Up to 5% (≤B5)	Up to 20% (≤B20)				
523V Series	Pressure Vacuum Vent	UL	X	X	UL	X	X	X	X	X	
623V Series	Pressure Vacuum Vent	UL	X	X	UL	X	X	X	X	X	
301 & 201 Series	Emergency Vents	UL/ULC	X	X	UL/ULC	X	X	X	X	X	
200TG Series	AST Mechanical Gauge	UL	X	X	UL	X	X	X	X	X	
444TA Series	Tank Alarms	ETL	X	X	ETL	X	X	X	X	X	
821 Series	Solenoid Valves	UL	X		UL	X		X	X	X	
21BV SS	Full Port Stainless-Steel Ball Valves	UL/ULC	X	X	UL/ULC	X		X		X	
61f STOP	AST Overfill Valve	UL/ULC	X		UL/ULC	X	X			X	

UL - UL listed X - Compatible ULC - UL Canada

FlexWorks Third-Party Approvals - FlexWorks Products

Product	Certifying Agency:	Specification/Standard:
AXP, DS, DP, DBS, DSE, DSW, FCS, FTS, MBS, PSL, REF, S, SBK, SMF, TFA, TSD, TSE, TSS, TSM, PTS, DSL series and HEF series	Underwriters Laboratories Inc. UL Listed per: File MH60659	UL Listed per: UL 2447 & ULC 664, Containment Sumps, Fittings, and Accessories for Fuels
Primary/Secondary Pipe and Couplings C075A, C10A, C15A, C20A, C30A Series and V20	Underwriters Laboratories Inc. File: MH16678	UL Listed per: UL 971 - Non-metallic Underground Piping for Flammable and Combustible Liquids (Motor Vehicles, Aviation, Marine Fuels)
V20 Vent Piping	Underwriters Laboratories Inc. File: MH16678	UL 971 Listed, Integral Primary/Secondary, Normal Vent & Vapor Piping, Gasoline, Aviation & Marina Fuels
Primary/Secondary Pipe and Couplings C075A, C10A, C15A, C20A, and C30A Series	ERA Technology Ltd EN14125	
Sealant Polyurethane Adhesive/Sealant Product #: FlexWorks SL-1100 and BOSTIK-1100FS	State of California Registered Professional Engineer Approval (RHL Design Group) OPW Test Report #3505 Dated 11/16/99 May National Associates, Inc. Project Report #PU051502 06/26/02 May National Associates, Inc. Project Report	CCR Title 23 Division 3, Chapter 16, Section 2631 (d) AB2481 requires secondary containment for all underground piping in UST system

FlexWorks Third-Party Approvals - ERA-Certified Products

Product No.	Description	Certification
FlexWorks	Primary/Secondary Containment Pipe & Couplings	BC63/0433/98.003

FlexWorks Florida EQ Certifications

Product No.	Description	Certification
C075, C075A, C10, C10A, C15, C15A, C20, C20A, C30, C30A	Primary Pipe	Florida EQ-649 & EQ-772
Loop System	Piping/ Piping With Enclosed Secondary Containment Equipped with Sump Liner, Dispenser Liner, and Interstitial Release Detection (Flexible Piping)	Florida EQ-709
TSD, TSM and TSS Series		Florida EQ-318
DSF Series	Piping/ Piping With Enclosed Secondary Containment	Florida EQ-368
FTS Series	Equipped with Sump Liner, Dispenser Liner, and	Florida EQ-912
FCS Series	Interstitial Release Detection (Flexible Piping)	Florida EQ-913
DSE Series		Florida EQ-966

OPW Patents - FlexWorks Piping Systems, Sumps, Fittings

United States Patents

5,813,797	6,099,202	6,729,797	8,020,576	8,667,687
5,819,975	6,116,817	7,073,976	8,066,024	
5,950,860	6,371,154	7,104,727	8,393,647	
6,039,201	6,565,127	7,578,308	8,622,097	

Ireland, Scandinavia, Luxembourg Patents

213-530

Poland Patents

11,401,010-00-203373-USDCURRO1-59

Taiwan Patents

8,920,312

Europe Patents

3356-54EP

Brazil Patents

PI9908225-0

China Patents

05-100023269

Canada Patents

2,322,216	2,492,346	2,782,925		
-----------	-----------	-----------	--	--

Mexico (Patent Application No.)

002,952	209,733	221,155	984,583	993,305
194,949	218,307	984,582	993,304	999,158

Spain (Patent Application No.)

97,909,839.9

Argentina (Patent Application No.)

AR008317B1	AR008316B1	AR008312B1		
------------	------------	------------	--	--

California Air Resources Board, EVR, State of Missouri and Mexico Approvals

Product #	Description	Approval #	EVR Executive Order #	MOPETP #	Mexico Approvals
1611AV-1620	Vapor Recovery Adaptor	MO. No. 99-03 / 98-06		APCP-0002-001-99	
1-2100	Spill Container	CARB No. 93-26	VR-102	APCP-0002-001-99	
1-2100 (EVR) (ISC)	Spill Container (with drain valve)	MO. No. 99-03	VR-102	APCP-0002-001-99	
1C-2100 (EVR)	Spill Container	CARB No. 93-26	VR-102	APCP-0002-001-99	
1C-2200	Spill Container		VR-102		
1-2115 (EVR)	Spill Container	CARB No. 93-26	VR-102	APCP-0002-001-99	
1C-2115 (EVR)	Spill Container	CARB No. 93-26	VR-102	APCP-0002-001-99	
1DK-2100	Replacement Drain Valve Kit	Approval CARB No. 95-7	VR 102		
1DP-2100	Replacement Drain Plug Kit		VR-102		
1-3100	Spill Container	MO. No. 06-01A	VR-102		
101BG(S)-2100	Spill Container	CARB No. 93-26			
101BG(S)-2115	Spill Container	CARB No. 93-26			
30MV	Ball Float Vent Valve	CARB No. 95-33			
P500 Series	Spill Container		VR-102		
P700 Series	Spill Container		VR-102		
53FC	Float Vent Valve	MO. No. 99-03		APCP-0002-001-99	
53VML	Ball Float Vent Valve	CARB No. 92-4		APCP-0002-001-99	
60VP	Vapor Shear Valve	CARB No. 94-27			
60VSP	Vapor Shear Valve	CARB No. 97-15			
60VSPC	Vapor Shear Valve	CARB No. 97-15			
61SA	Swivel Adaptor	CARB No. 95-1		APCP-0002-001-99	SEGEMDGPCCAT-MTSRV-DOVER/001/2004
61SA Tool	Installation Tool		VR-102		
61SO	Overfill Valve	CARB No. 92-5/93-2/97-04/95-17			
61SOM	Overfill Valve	CARB No. 92-5			
61SOP	Overfill Valve	CARB No. 92-8			
61VSA (EVR)	Vapor Swivel Adaptor	CARB No. 00-11	VR-102	APCP-0002-001-99	SEGEMDGPCCAT-MTSRV-DOVER/001/2004
61JSK (EVR)	Jack Screw Kit for 61SO		VR-102	APCP-0002-001-99	
61SALP-EVR	Fill Swivel Adaptor		VR-102	APCP-0002-001-99	
FSA-400	Face Adaptor		VR-102	APCP-0002-001-99	
61AS	Side-Seal Adaptor	CARB No. G70-97A			
61T	Drop Tube	CARB No. G70-97A	VR-101 & VR-102	APCP-0002-001-99	
61TCP	Coaxial Drop Tube	CARB No. 93-1			
62	Side-Seal Cap	CARB No. G70-97A			
62M	Monitoring Cap		VR 102	APCP-0002-001-99	
62TT	Side-Seal Cap	CARB No. G70-97A			
116	Cap	CARB No. G70-97A			
7150-400C/410C/420C (T)	Vapor-Tight Overfill Valve		VR-102	APCP-0002-001-99	
233V	Extractor	CARB No. G70-97A		APCP-0002-001-99	
233VM	Extractor	CARB No. G70-97A		APCP-0002-001-99	
233SD	Extractor	CARB No. G70-97A			
233VTS	Extractor/Assembly	CARB No. G70-97A			
311	Multi-Port Spill Container	CARB No. 93-25			
511	Multi-Port Spill Container	CARB No. 92-12			
500L	Replaceable Spill Bucket		VR-102	APCP-0002-001-99	
6500 Series (EVR)	Multi-Port		VR-102	APCP-0002-001-99	
523	Pressure/Vacuum Vent	CARB No. 94-22/92-28/94-11			
523V	Pressure/Vacuum Vent	CARB No. 98-1		APCP-0002-001-99	
633LC	Locking Clamp	CARB No. 97-14		APCP-0002-001-99	
633T	Top-Seal Adaptor	CARB No. G70-97A		APCP-0002-001-99	
633TCP	Top-Seal Adaptor	CARB No. G70-97A			
634TT (EVR)	Top-Seal Cap	CARB No. G70-97A	VR-101 & VR-102	APCP-0002-001-99	
700L	Testable/Replaceable Spill Bucket		VR-102		
1711T (EVR)	Vapor Recovery Cap	CARB No. G70-97A	VR-101 & VR-102	APCP-0002-001-99	
1711TK	Cap	CARB No. G70-97A			
6111-1400 (EVR)	Tank Bottom Protector	CARB No. 98-21	VR-102	APCP-0002-001-99	
211	Spill Container	CARB No. AGT-94-01			
1711LPC	Low Profile Vapor Cap		VR-101, VR-102, VR-103, VR-104, & VR-105	APCP-0002-001-99	
634LPC	Low Profile Fill Cap		VR-101, VR-102, VR-103, VR-104, & VR-105	APCP-0002-001-99	

California Air Resources Board, EVR, State of Missouri and Mexico Approvals

Product #	Description	Approval #	EVR Executive Order #	MOPETP #	Mexico Approvals
723V	Vacuum Vent		VR-102		
71JSK	Jack Screw Kit		VR-102		

UL-Listed Products - Underground Products

OPW Approvals/Listings

Product	Description	File #
10 Series	Emergency Shut-Off Valves	MH6535
523V, 623V and 723V	Pressure/Vacuum Vents, tested per UL 2583	MH19391
61AS, 61SALP, 62M, 62MAB, 62MBB, 633T, 634LPC, 634TE, 634TT, 1611AV, 1711T, 1711LPC, 61VSA Series. EGVV per UL 2583	Caps & Adaptors	MH19391
60V, 60VP, 60VSP, & 60VSPC	Vapor Shear Valves	MH6535
6150 & 7150 Series	Overfill Valve	MH19391

ULc-Listed Products - Underground Products

Product	Description	File #
10 Series	Emergency Shut-Off Valves	MH27238
6150 & 7150	Overfill Valve	MH21147
7150	Vapor-Tight Overfill Valve	MH21147
70S	Vertical Check Valve	MH27238
1, 1SC & 101BG	Spill Containers	MH27236
Flex Connectors	Stainless-Steel Flexible Connectors	MH48310
Fibrelite Multiport	Spill Containment Manholes	MH27236

ERA-Certified Products - Underground Products

Product	Description	File #
FlexWorks	Primary/Secondary Containment Pipe & Couplings	BC63/0681/97/003; BC63/0681/97/004

ATEX-Certified/Compliant - OPW Underground Products

Product	Description	Certificate #
523 P/V Vent	Type 523 P/V vent - End-of-line Deflagration Flame Arresters, 523 METAL UK, 523 METAL UKDI	Sira 05ATEX9050X
623 V Vent	End-of-Line Deflagration Flame Arresters 623-V 2203, 0623-V 3203	Sira 05ATEX9049X
66VL Breakaway Valves	66VL-01AT, 66VL-02AT	Sira 06ATEX9326U
Model 10 Series Shear Valves	Emergency Shut-Off Valves	Sira 06ATEX9341U
7150, 6150	Overfill Valve	Sira 08ATEX9047, Sira 08ATEX9048
60VP-101L	Vapor Recovery Shear Valve	Sira 17ATEX9143U

Florida EQ Certifications

Product #	Description	Certification
111/211/311/511	Multi-Port Spill Containers	EQ-145
1, 1SC, 101BG, 111, 211 Series	Spill Containers	EQ-224
1C-3101D, 1C3101P	EDGE 1" Series Single Spill Container	EQ-718
1C-3100 Series	EDGE™ Double Wall Spill Container	EQ-708
6150, 61TNG, 53V, 30MV Series	Overfill Valves & Ball Floats	EQ-223
7150 Series	Overfill Prevention Valve	EQ-697
7150 Testable Series	Overfill Prevention Valve	EQ-815
1-3100 15 Gallon Series	Spill Containment	EQ-794
1-3700 Retrofit Series	Spill Containment Replacement	EQ-795
332 AST Series	Direct-Fill Spill Container	EQ-814
1-2200 Series	Spill Container	EQ-829
Fibrelite Multiport	Spill Containment Manholes	EQ-859

North Carolina

Product #	Description	Certification
IC-3100	Double Wall Spill Container	

Wisconsin Department of Commerce

Product #	Description	Certification
FC XX-XXXX	OPW Flex Connectors	

Arizona Department of Weights and Measures

Product #	Description	Certification
6150-EVR	Overfill Protection in Vaulted Systems	VR Alert No. 12

OPW Patents - Underground Products

Emergency Shut-Off Valves (10 Plus Series)

Patent #	Country
7,578,308	USA
8,020,576	USA
8,066,024	USA
9,845,896	USA
P10,703,905-0	Brazil
2,605,139	Canada
017,913	Eurasian Patent Convention
200,710,166,890.3	China
1,916,221	Europe, Spain, France, Great Britain, Italy, Poland
2,314,541	Europe, Germany, Spain, France, Great Britain, Italy, Poland
300,952	India
5,128,901	Japan
1497148	Korea
277,128	Mexico
2,314,541	Poland
017,913	Russia
1,337,236	Taiwan

Spill Containers

Patent #	Country
8,622,097	USA
2,717,743	Canada

Coax Couplings

Patent #	Country
6,565,127	USA

Loop System

Patent #	Country
7,073,976	USA

Drop Tube (7150)

Patent #	Country
7,069,965, 7,243,675, 6,913,047, 7,128,102, 7,213,610, 7,437,815, 7,243,675	USA
2,503,927, 2,503,671, 2,503,923, 2,503,667, 2,503,924, 2,503,676	Canada
1,344,920, 1,333,920, 1,347,918, 1,331,115	Taiwan
290,614, 304,329, 278,650, 297,969, and 294,422	India
4,813,085 and 4,871,525	Japan
10-1,050,556 and 10-1,057,906	Korea

DPC with Test Port

Patent #	Country
7,104,727	USA

SBC Coupling

Patent #	Country
8,393,647	USA

REF Fitting

Patent #	Country
8,667,687	USA
2,782,925	Canada

Electrotite Junction Box

Patent #	Country
10,218,163	USA
2,965,929	Canada
382,369	Mexico

Matador Backfill Protector

Patent #	Country
10,294,627	USA

Testable Overfill Valve

Patent #	Country
9,463,971	USA
11,061,418	USA
2,801,784	Canada
2,631,211	Europe, Germany, France, UK
3,124,431	Europe, Germany, France, UK
13,155,871.4	Europe
16,185,737.0	Europe

CARB EVR-Certified Products - Aboveground Storage Tank Equipment

Product	Description	EO Number
61VSA-1020-EVR	Rotatable Swivel Adaptor	VR 401
1711T-7085-EVR & 1711LPC-0300	Vapor Recovery Caps	VR 401
66CLP-5100	Balance, Reconnectable Breakaway	VR 204, VR-203

CARB (Pre-EVR) Certified Products

Product	Description	CARB Certification	CA Fire Marshal
12VW	Vacuum-Assist Nozzle	G-70-153, G-70-150, G-70-199	GVRC: 005:008:059
66CAS	Dry Reconnect Inverted Breakaway	96-18	GVRC: 005:008:056
66ISU	Vacuum-Assist Breakaway	94-9	GVRC: 005:031:009
66ISB	Swivel/Breakaways	95-35	GVRC: 005:031:016
66CL/CSU/CLP	Coaxial Breakaway	91-14	GVRC: 005:008:047
Vacurite® 00-40005C	Centralized Vacuum-Assist Vapor Recovery System	G-70-164-AA, G-70-175	GVRC: 004:001:001
Max Vacurite® AST 00-40001C	Centralized Vacuum-Assist Vapor Recovery System	G-70-164-AA, G-70-175-AST	GVRC: 004:001:001
VacuChek™	Air to Liquid Test Equipment	CARB Approved Alternative to TP-201.5	N/A
VaporSaver™	Tank Pressure Management System	G-70-204A	GVRC: 005:008:062
523V	Pressure/Vacuum Vent	CARB No. 98-1	N/A

OPW Patents - Aboveground Products

Nozzles

Patent #	Country
5,645,115	USA
5,454,602	USA
5,813,443	USA
5,620,030	USA
5,4353,57	USA
5,577,538	USA
5,832,970	USA
6,851,628	USA
6,951,229	USA
8,371,341	USA
8,376,000	USA
8,616,252	USA
8,528,609	USA
8,631,837	USA
8,636,027	USA
7,134,580	USA
6,024,140	USA
9,126,820	USA
9,260,286	USA
9,527,720	USA
10,023,458	USA
10,081,532	USA
10,273,137	USA
10,669,149	USA
11,673,793	USA
11,554,949	USA
11,235,966	USA
D728,736	USA
D738,461	USA
2011316968	Australia
348967	Australia
349307	Australia
2767249	Canada
2897695	Canada
ZL201080052182.7	China
ZL201180056513.9	China
ZL201180058887.4	China
ZL201330216105.7	China
ZL201480008253.1	China
XL201510407818.X	China
9178054.4	EPC
002145748-0001 and 002145748-00002	European Union
254172	India
254173	India
IN395772	India
326551	Mexico
369241	Mexico
417587	New Zealand
417970	New Zealand
598980	New Zealand
609846	New Zealand
91392	Russia
2013119834	Russia
2013/02827	South Africa
93130770	Taiwan
I636000	Taiwan

Breakaways

Patent #	Country
5,695,221	USA
5,564,471	USA
5,570,719	USA
8,931,499	USA
5,529,085	USA
9,528,648	USA
10,336,604	USA
11,603,954	USA
17/005,708	USA
2,904,305	Canada
17/005,708	Mexico

Island Forms

Patent #	Country
6,099,202, 6,375,384B1	USA
12,274,17C	China
2,322,216	Canada
221,155	Mexico

Storage Tank Emergency Vent Valve (AST)

Patent #	Country
5,141,020	USA

Storage Tank Shut-Off Valve (61fSTOP) AST

Patent #	Country
5,472,012	USA
5,850,849	USA

Tank Gauge (AST)

Patent #	Country
6,523,404, 7,174,784	USA
P10501119-1	Brazil
2,492,346	Canada
94,100,860	Taiwan
05-10,002,326.9	China
22/che/2005	India
2005-7183	Japan
4005/2005	Korea

UL-Listed Products - Aboveground Products

Product	Description	File #
11A Series	Automatic Nozzle	MH1942
11B Series	Pressure-Sensing Automatic Nozzle	MH1942
7H Series	Automatic Nozzle	MH1942
7HB Series	Pressure-Sensing Automatic Nozzle	MH1942
11AF	Farm Nozzle	MH1942
11BP E85	Pressure-Sensing Automatic Nozzle for E85	MH1942
12VW	Vacuum-Assist Nozzle	MH1942
21BV Series	Ball Valves	MH65660
241TPS	Two-Plane Swivel	MH4542
241TPS-0492	Two-Plane Swivel for E85	MH4542
36S	Hose Swivel	MH4542
45	Hose Swivel	MH4542
MFVA	Vacuum-Assist Vapor Recovery Swivel	MH4542
199ASV	Anti-Siphon Valve	MH8488
44	Flow Limiters	MH8488
523V & 623V	Pressure/Vacuum Vents	MH19391
623V XXXX	Pressure Vacuum Vent	MH19391
821 Series	Solenoid Valve	E12264
66SB	Swivel Breakaway	MH18037
66ISB	Vacuum-Assist Vapor Recovery Breakaway	MH18037
66REC	3/4" Reconnectable Breakaway	MH18037
66V	Breakaway	MH18037
66V-0492	Breakaway for E85	MH18037
66CAS	Dry Reconnect Inverted Breakaway	MH18037
66EZR	Dry Reconnect Inverted Breakaway	MH18037
66CLP	Coaxial Breakaways	MH18037
202 Series	Emergency Vents	MH25724
301 Series	Emergency Vents	MH25724
61f STOP	AST Overfill Valve	MH25724
200TG	Mechanical Tank Gauge	MH29367
44TA-LLFS	Liquid-Level Float Switch Sub Assembly	E177423
X44TA-0100	Liquid-Level and Overfill Alarm	ETL302278-H01

UL-Listed for Canada and ULc - Aboveground Products

Product	Description	File #
11A Series & Astro	Automatic Nozzle	MH1942
11B Series & AstroB	Pressure-Sensing Automatic Nozzle	MH1942
1A Nozzle	Automatic Nozzle	MH1942
7H Series	Automatic Nozzle	MH1942
7HB Series	Pressure-Sensing Automatic Nozzle	MH1942
44 & 44N	Flow Limiters	MH8488
11AKF & 11AKPF	Farm Nozzle	MH1942
241TPS	Two-Plane Swivel	MH4542
20S	Hose Swivel	MH4542
45	Hose Swivel	MH4542
66SB	3/4" Swivel Breakaway	MH18037
66REC	Reconnectable Breakaway	MH18037
66RB	1" Reconnectable Breakaway	MH18037
66V	Breakaway	ULC MH27235, UL for Canada MH18037
61fSTOP-XXXX Series	Overfill Prevention Valve	MH25724
61fSTOP-XXXXT Series	Overfill Prevention Valve	MH25724
6211 Series	Remote-Fill AST Spill Containers	MH27236
6221 Series	Direct-Fill AST Spill Containers	MH27236
331 / 332 Series	AST Spill Containers	MH19391

MoPETP (Missouri Performance Evaluation Testing Procedures)

11VF-47	Balance Nozzle	MoPETP 99-03
66CL/CSU/CLP	Coaxial Breakaway	MoPETP 99-03
523V	Pressure/Vacuum Vent	APCP-0002-001-99
62M	Monitoring Cap	MOPETP APCP-0002-001-99

Florida

211AST, 211 REMOTE, 221AST	AST Spill Containers	EQ-226
61fSTOP Series	AST Overfill Prevention Valve	EQ-225

New York City Fire Department Certification Number

61fStop	AST Overfill Prevention Valve	4949
---------	-------------------------------	------

Other VaporSaver Approvals

ATEX – SIRA 03ATEX 9535	Texas ORVR Certification Approval Letter: 12/01/04
TUV – 97-11.1	Mexico – SEGEMDGPCCAT- MTSRV- DOVER/001/2004
Independent 3rd Party Certified C-030501	Japan – KHK File# 16-4-5
MDE Regulation Chapter 02.03 c(5)b	

OPW Instruction Manuals

Description	Part Number	Description	Part Number
Access Pipe Installation Instructions.....	API-0001	1 TAG.....	H13773M
California Compliant Boot Info Flyer.....	CAB-0001	1-2100-DSH Shell/Fibrelite Spill Container.....	H15324PA
California Compliant Pipe Info Flyer.....	CPF-0001	1-3100 Series Double Wall Spill Container.....	202181
Coax Fitting Flyer.....	CFF-0001	1-3100-TOOL.....	202395
Cold Weather Flyer.....	CWF-0001	10 Plus Emergency Valve.....	201614
Coupling Machine Operating Instructions.....	CMI-0001	10 Series.....	H11374PA
Dispenser Containment Flyer.....	DCF-0001	10 Series 2".....	H11442M
Dispenser Containment Manual.....	DCM-0001	100 Series Counterweight Hose Retractors.....	H15852PA
Dispenser Pans and Entry Fitting Install.....	DPI-0001	101BG Slip On.....	H12579M
Dispenser Sumps & Stabilizer Bars.....	DSI-0001	101BG-2100.....	H12260M
Double Entry Boot Flyer.....	DBF-0001	101BG-21AR Spacer Ring.....	H12713PA
Entry Boot Flyer.....	EBF-0001	101BG-LATCH.....	H13533M
E-Vac Installation Instructions.....	EII-0001	104AOW Observation Well.....	H12892M
Flexible Entry Boot Manual.....	EBM-0001	104AOW-12KIT.....	H14490M
Flexible Entry Boots.....	FBI-0001	10R Replacement Top.....	H09683PA
Flexible Isolation Tubes.....	P-ITI-5080	144TA and 444TA-0100.....	200655
Flexible Piping Manual.....	UPM-0001	18KR RACK KIT.....	H10150PA
Float Vent Valve Install.....	FVV-0001	18KVA Rack Kit.....	H13156M
Install Tips.....	FIT-0001	199ASV Series.....	H13422PA
PetroTrip Flyer.....	PTF-0001	1DK-2100 Drain Valve Kit.....	H11471M
Petro-Trip Installation.....	PTI-0001	1DP Drain Plug Kit.....	H15199M
Pipe Cutaway Flyer.....	FPC-0001	200TG Tank Gauges.....	H14912PA
Piping Flyer.....	FPP-0001	201 Series.....	H14271PA
Piping Installation Instructions.....	PII-0001	202 Series.....	H11792M
SB-989 Testing Procedures.....	P-SB-989	233's and 53VML's.....	H14111M
Swivel Fitting Flyer.....	SFF-0001	295SRK.....	H9775PA
Tank Fitting Adaptor.....	FAI-0001	30MV-KIT.....	200172
Tank Sump Flyer.....	TSF-0001	505 Multiport.....	H15225PA
Tank Sump Manual.....	TSM-0001	523V.....	H11972M
Transition Sump Flyer.....	SFT-0001	523V 3" Water Column.....	H12988M
1 Spill Container Slip-on Models.....	H12262M	53VML/30MV.....	H14111PA
1-2100 Series Spill Container.....	H12295M	60V.....	H12133M

OPW Instruction Manuals

Description	Part Number	Description	Part Number
60VS.....	H12291M	634TTM-7087.....	H10772PA
61FSTOP-1000, 100M, 200M.....	H12676M	6521-XAR Adaptor Ring.....	201526
61FSTOP-2000.....	H13337M	6591B Container.....	H16047PA
61FSTOP-3000, 3050, 305A.....	H13315M	6591B Series.....	H16043PA
61FT-0312, 0206.....	H14428PA	68EZR Reconnectable Breakaway.....	208080
61JSK.....	H15289M	70 and 70S Verticle Check Valve.....	H11055PA
61JSK-4410 AND 61JSK-44CB.....	H15289M	71SO.....	H15524PA
61JSK-4RMT.....	H14741PA	700 Series Remote Replaceable.....	200242
61SOM EVR.....	H15057PA	700 Series Replaceable Spill.....	200219
61SA-TOOL.....	H14991PA	82RV-2505 Series Pressure Relief Valve Instruction Sheet.....	200517
61SALP.....	H12712M	CPN PIPE - POLYWRAP REMOVAL.....	200453
61SO Methanol Lower Tube Instructions.....	C04098M	Extractor Fittling 233E Style, 233VP, 233 VMP Test Caps	H11223PA
61SO-4000 Series.....	H11764M	MPWS.....	H15226PA
61SO-4BYT.....	H12027M	MPWS-33TS.....	H15912PA
61SOC Coaxial Fill Tube.....	C03634PA	MPWS.....	H15861PA
61SOK Float Kit.....	H11403PA	MSDS Sheet For Loctite "Weld"	H12854M
61SOM EVR.....	H14790M	POMECO 211-RMOT Remote Fill Aboveground Storage Tank Spill Container.....	H15857PA
61SOR Remote Fill Tube.....	H11964M	POMECO 211, 221-AST Direct Fill Aboveground Storage Tank Spill Containers.....	H15854PA
61T Drop Tube.....	200652	H15854PA
61T-2" Drop Tube.....	H15392PA	POMECO 6111-KP Slip On Series Spill Container with Hand Pump Instruction Sheet.....	H15850PA
61TCP-3800.....	H12064M	POMECO 7111SS-CSDW Double Wall Slip On Series Spill Container Instruction Sheet.....	200639
61TNG.....	H12697M	POMECO Island Form Instruction Sheet.....	H15851PA
61TP-2398.....	H09787PA	Pump Kit 1P-2105.....	H12302M
61VSA.....	H14656M	Registration Card.....	H15003PA
1611 - 3" Vapor Adaptor.....	H08843PA	Threaded Carb Approved (61SOP).....	H13792M
6111-1400.....	H14977M	Threaded/Carb Approved (61SO).....	H13791M
6111-1400 Tank Bottom Protector.....	H14977PA		
6211-AST and 6221-AST Spill Containers.....	202207		
623V.....	H15208M		
623V.....	H14898M		
62M Series.....	H14491PA		
633TC & 633TCP.....	H10013PA		

OPW Instruction Manuals

Description	Part Number	Description	Part Number
100 Series Counterweight Hose Retractors.....	H15852PA	190 Upper Poppet Replacement Inst. Sheet.....	H10969PA
102 Spring Balance Hose Retractors.....	H15853PA	295 Guard Replacement Kit Instruction Sheet.....	H14519M
11A Spout Replacement Kit Inst. Sheet, Canada.....	H15177PA	295 Series Instruction Sheet.....	H09237PA
11A, 11B, 7H Nozzles Canada.....	H15987M	295 Swivel Repair Kit Instruction Sheet.....	H15904PA
11A, 11B, 7H Nozzles USA.....	H15985M	3VW VEG Kit (Wayne Models) Instruction Sheet..	H12172M
11B Spout Replacement Kit Inst. Sheet, Canada...	H15178PA	44 Series Instruction Sheet.....	H12918PA
11VA & 11VAI Series Instruction Sheet.....	H13664M	44N Series Instruction Sheet.....	H13168PA
11VA Hand Insulator Kit Instruction Sheet.....	H11935PA	5B Leaded Spout Kit Instruction Sheet.....	H10426PA
11VA Spout Replacement Kit Instruction Sheet....	H13938M	5B Series 11A, 11B Spout Kit Instruction Sheet....	H04872M
11VAA Series Instruction Sheet.....	H13234M	5BH Series 7H, 7HB Spout Kit Instruction Sheet...	H08336PA
11VAI Spout Repl. Kit w/ Adap. Inst. Sheet.....	H12686M	5D Series 1290 Spout Kit Instruction Sheet.....	H09656PA
11VAI Spout Repl. Kit w/o Adap. Inst. Sheet.....	H12881M	66CAS, 66TEC, 66FLB Series Instruction Sheet....	H13008M
11VAI Vapor Path Rep. Kit Instruction Sheet.....	H13142M	66CL Series Instruction Sheet.....	H11487PA
11VAI, 12VW Vapor Recovery Nozzles.....	H15986M	66CLP Breakaway.....	F-70
11VF Balance Nozzle.....	H10655PA	66CSU Breakaway.....	F-72
11VF Balance Nozzle.....	H14380M	66ISB Swivel Break.....	F-68
11VF Bellows & Face Seal Rep. Kit Inst. Sheet....	H11011PA	66ISU Breakaway.....	F-71
11VF Bellows Replacement Kit Instruction Sheet...	H11010PA	66SB/RB.....	F-69
11VF Face Seal Replacement Kit Inst. Sheet.....	H11009PA	66SRK-1000 O-ring kit (66CAS).....	H14485PA
11VF Hand Insulator Instruction Sheet.....	H10791PA	OPW Hand Insulators.....	H11337PA
11VF Spout Replacement Kit Instruction Sheet....	H11007PA	Renewable Hand Insulators.....	H10652PA
11VF Spout, Bellows, & Face Seal Repl. Kit Inst. .	H11008PA	RTC – RTR Covers and Rings	
1290 Automatic Bulk Nozzle.....	H09238PA	and replacement gasket for the RTC.....	H15187M
12VW Hand Insulator Repl. Kit Instruction Sheet...	H14604PA		
12VW Series Instruction Sheet.....	H14072M		
12VW Spout Replacement Kit Instruction Sheet..	H14603PA		

OPW Alphanumeric Product Index

Product Number	Page	Product Number	Page	Product Number	Page	Product Number	Page
25.....	193, 220	201739	80, 83	206118.....	136	217502.....	101
44.....	167, 230	201758.....	202	206119.....	136	217817.....	41
45.....	160, 166, 230, 231	201759.....	90, 202	206120.....	136	1360137.....	190
53.....	120	201877	208	206121.....	80	1.741E+88	23
62.....	224	201972.....	80	206122.....	80	21Gu	157
83.....	113	202013.....	80	206252.....	149	DPC-2150A	10
89.....	122	202234.....	11	206741.....	114	DPC-2200A	10
113.....	211	202235.....	11	207211.....	83	DPC-2300A	10
116.....	104, 111, 224	202312.....	202	207212.....	83	FDS-4021	38
190.....	185, 190	202721.....	208	207235	83	00-40005C	228
210.....	189	202891.....	207	207243.....	83	1 Series	226
211.....	224	202950.....	59, 62	208197.....	83	1-2100 .. 118, 119, 135, 224	
269.....	113	203035.....	80, 81, 101	208951.....	83	1-2100 (EVR) (ISC)	224
296.....	190	203148.....	98	208952.....	83	1-2100 Series	85, 219
297.....	190	203174	132, 134	209817	125	1-2100-DEVR	86
301.....	200, 208	203246.....	100	209939.....	95	1-2100-DSH	98
311.....	224	203269.....	80	210474.....	19	1-2100-EVR	84, 122
511.....	224	203272.....	100	210488.....	80	1-2100-PEVR.....	86
523.....	200, 224, 225	203325.....	208	211064	80	1-2100-PSH.....	98
623	200, 225	203340.....	80	211079	80	1-2100C-DEVR.....	86
1543.....	23, 27	203666	132, 134	211143.....	163	1-2100C-PEVR	86
1611	122	204016	205	211218.....	154	1-2105	90
1741.....	23	204129.....	157	211300.....	94	1-2105 Series	89
1785.....	200	204130.....	157	211465.....	80	1-2115	86
1836	23, 27, 32	204811.....	176	211752.....	156	1-2115 (EVR).....	224
4075	53	204870.....	176	211817	156	1-2115-DEVR	86
4175.....	53	204872	176	212164.....	134	1-2115C-DEVR.....	86
6221.....	201	205181.....	99	212168.....	134	1-2155	90
8509	163	205183.....	99	212518.....	134	1-21AC.....	80,86, 90
14469.....	217	205206.....	154	212529.....	134	1-21CC.....	81, 86, 90
200143.....	59	205217.....	154	212686.....	156	1-21CC-XX	80
201393.....	99	205219.....	154	212691.....	156	1-2200 Series.. 82, 219, 226	
201478	111	205248	154	213273.....	59	1-3100	224
201530	80, 81	205252.....	154	215290	182	1-3100 15 Gallon Series .226	
201567	90	205322.....	98	215556.....	156	1-3100 Series	219
201686.....	80	205599.....	154	216662.....	19	1-3100-TOOL	
201689.....	80, 81	205749.....	132, 134	217500.....	101		79, 82
201692.....	80, 81, 83	206017.....	80	217501.....	101	1-3700 Retrofit Series	226

OPW Alphanumeric Product Index

Product Number	Page	Product Number	Page	Product Number	Page	Product Number	Page
1" 66V-130RF	166	104A/FG-1219.....	136	10RFP-2002	61	11A-0100.....	147
1" 66V-135RF	166	104AOW-0800.....	138, 139	10RFT-5742.....	61, 62	11A-0100-B20	147
10 Plus RF	219	104AOW-1200.....		10RFT-5750.....	61, 62	11A-0200	147
10 Plus Series	59, 219		135, 138, 139	10RFTP-5751.....	62	11A-0300	147
10 Series	60, 219, 225	104AOW-1219.....	138	10RFTP-5752.....	61, 62	11A-0400	147
100 Series	198	104AOW-1800.....	138, 139	10RM-2003.....	61	11A-0400-B20	147
1000 Series	217	104AOW-1819.....	138, 139	10RMP-2004.....	61	11A-0500	147
101BG.....	225	104C	135	10RMT-5842	61, 62	11A-0750.....	147
101BG Series	226	104C-2000.....	135	10RMT-5850.....	61, 62	11A-0800	147
101BG-2100.....	92	104FG	136	10RMTP-5851	61, 62	11A-0900	147
101BG-2100 Series	91	104FG-1200.....	136	10RMTP-5852	61, 62	11A-0900-B20	147
101BG-2100C	92	104FG-1219.....	136	10RPLUS-0150.....	59	11A® Series ..	145, 147, 148, 154, 220, 230
101BG-2105.....	92	106DL-0095	100	10RPLUS-0152	37, 59		
101BG-2115	91, 92	106N-1100.....	100	10RPLUS-0200.....	59	11AF	230
101BG-2115C	92	106N-2200.....	100	10RPLUS-0202.....	37, 59	11AF Series	220
101BG-21AR	92	106N-3300.....	100	10RU-2005.....	61	11AF-10FS	151
101BG-21LA.....	92	106N-4400.....	100	10RUP-2006.....	61	11AF-300F	151
101BG-BUCKET.....	92	106P-0150	100	10RUTC-5962.....	61, 62	11AF-40FS	151
101BG-Cover	92, 135	106R-0175	100	10RUTC-5975.....	61, 62	11AF-4FSC	151
101BG-LATCH.....	92	106SU-0185.....	100	10RUTCP-5972.....	61, 62	11AF®	151
101BG-Series	219	106U-0125.....	100	10SBHMP-5830.....	61	11AKF & 11AKPF	231
101BG(S)-2100	224	106UP-0125.....	100	10SBUP-5926.....	61	11AP	147
101BG(S)-2115	224	107 Nameplate Holder...	100	10SHMTP-5811	61, 62	11AP Series	220
104 Series	136	107-0300	100	10SUTCP-5911.....	61	11AP-0009	147
104A.....	136	10BF-5725	61	10UBK-015	62	11AP-0100	147
104A-0800.....	136, 139	10BFP-5726	61	10URK-020.....	62	11AP-0100-E25	147
104A-0800WT.....	136	10BHMP-5830.....	61	10UTCP-5901.....	61, 62	11AP-0200	147
104A-1066	139	10BM-5825.....	61	11® Series	148	11AP-0300	147
104A-1200.....	136	10BU-5925	61	110/120 Series.....	137	11AP-0300-E25	147
104A-1200 & 1219.....	139	10BUP-5926	61	111 Series	226	11AP-0400	147
104A-1200WT.....	136	10FTP-5701	61, 62	113 Series	128, 211	11AP-0400-E25	147
104A-1219.....	136	10P-0150	59	113-0099	128, 211	11AP-0500	147
104A-1800.....	135, 136	10P-0152	41, 59	116-7085	111	11AP-0500-E25	147
104A-1800 & 1819.....	139	10P-0152RF	59	116M	104, 111	11AP-0750	147
104A-1800WT.....	136	10P-0200	59	116M-0375	111	11AP-0800	147
104A-1819.....	136	10P-0202	59	116M-0500	111	11AP-0800-E25	147
104A-1819WT.....	136	10P-0202RF B100	59	11A Series & Astro.....	231	11AP-0900	147
104A/FG-1200.....	136	10RF-2001	61	11A-0009.....	147	11AP-0900-E25.....	147

OPW Alphanumeric Product Index

Product Number	Page	Product Number	Page	Product Number	Page	Product Number	Page
11AP®	145	11BP-0300-E25	147	14BP-0300	142	1611AN-0300	205
11APF Series	220	11BP-0300-XC	148	14BP-0400	142	1611AV.. 102, 104, 110, 225	
11APF-300F	151	11BP-0392-E85	146, 147	14BP-0500	142	1611AV & 1711LPC	102
11APF-30FS	151	11BP-0400	147	14BP-0900	142	1611AV & 1711T	102
11APF-40FS	151	11BP-0400-E25	147	14C	143	1611AV-1605	109
11APF-4FSC	151	11BP-0400-XC	148	14C-0100	143	1611AV-1620	109, 224
11B	147	11BP-0492-E85	146, 147	14C-0100XC	148	1611AVB	104, 110
11B Series	220, 230	11BP-0500	147	14C-0300	143	1611AVB-1625	109, 219
11B Series & AstroB	231	11BP-0500-E25	147	14C-0400	143	1611VR	104
11B-0009	147	11BP-0750	147	14C-0500	143	1612AN	205
11B-0100	147	11BP-0800	147	14C-0900	143	1612AN-0200	205
11B-0100-B20	147	11BP-0800-E25	147	14C, 14HC	220	1612AN-0300	205
11B-0100-XC	148	11BP-0900	147	14E	141, 220	1672AN-SS20	205
11B-0100-XCB20	148	11BP-0900-E25	147	14E-0100	141	1672AN-SS30	205
11B-0300	147	11BP-0992-E85	146, 147,	14E-0300	141	1711D	205
11B-0400	147		154	14E-0400	141	1711D-1080.....	205
11B-0400-B20	147	11VF-47	231	14E-0500	141	1711LPC.....	
11B-0400-XC	148	1290 Series	220	14E-0900	141	102, 110, 224, 225	
11B-0400-XCB20	148	1290-0050	180	14HC.....	144	1711LPC-0300	110, 219,
11B-0500	147	1290G-0050	180	14HC-0100.....	144	228	
11B-0750	147	1291 Series	220	14HC-0100-XC	144, 148	1711T	102, 110, 122, 225
11B-0800	147	1291C	180	14HC-0100NC-XC	144	1711T (EVR)	224
11B-0900	147	1291C-0050	180	14HC-0400.....	144	1711T-7085-EVR ..	110, 219,
11B-0900-B20	147	12VW....	169, 170, 228, 230	14HC-0400-XC.....	144	228	
11B-0900-XC	148	12VW Series	220	14HC-0400-XC	148	1711TK	224
11B-0900-XCB20	148	12VW-0000	170	14HC-0400NC-XC	144	1712D	205
11B® Series ...	145, 148, 154	12VW-0100	170	14HC-0900	144	1712D-1095	205
11BP	145, 147, 150	12VW-0200	170	14HC-0900-XC	144, 148	178S Series	214
11BP E-85 Series	146	12VW-0300	170	14HC-0900NC-XC	144	178S-6130	214
11BP E85	230	12VW-0400.....	170	153-0910	183, 186, 190	1836M	27
11BP Series	220	12VW-0400-AD.....	170	1535L.....	27, 32	190 Series	220
11BP-0009	147	12VW-0500.....	170	1535R	27, 32	190-0112	185 186, 190
11BP-0100	147	12VW-0750.....	170	153AF-0100	184, 190	190-0113	185 186, 190
11BP-0100-E25.....	147	12VW-0900	170	153J-0100	183, 190	190-0114	185 186, 190
11BP-0100-XC	148	144TA	200, 207	1543B	23	190-0115	185 186, 190
11BP-0192-E85	146, 147	144TA-0100	207	1611 Series	109	190-B104	186
11BP-0200	147	14BP	142, 220	1611AN Series	205	190G	190
11BP-0300	147	14BP-0100	142	1611AN-0200	205	190K-0001	186, 189

OPW Alphanumeric Product Index

Product Number	Page	Product Number	Page	Product Number	Page	Product Number	Page
190S-7063	183, 190	1C-2105	90	86, 88, 92, 98		1SC-3132P-W	101
190WF-8002	184, 190	1C-2115 (EVR)	224	1DP-2100	80, 83, 86, 224	1SC-3132P-Y	101
190WM-8001	183, 190	1C-2115-DEVR	86	1P-2105	90, 98	1SC-31512D	79
199ASV	212, 230	1C-2115C-DEVR	86	1PPK-2100	86	1SC-31512P	79
199ASV-1075	212	1C-2155	90	1RL-KIT	133	1SC-31532D	79
199ASV-1100	212	1C-2200	224	1SC	225	1SC-31532P	79
199ASV-1150	212	1C-2200D	82	1SC Series	226	1SC-TOOL	88
199ASV-1200	212	1C-2200P	82	1SC-2100	88, 123	1TAG-API-BD20	101
199ASV-2075	212	1C-3100 Series	226	1SC-2100-DEVR	88	1TAG-API-BD20T	101
199ASV-2100	212	1C-3101D	81, 226	1SC-2100-EVR Series	87	1TAG-API-BD5	101
199ASV-2150	212	1C-3101D / 1SC-3101D	80	1SC-2100-PEVR	88	1TAG-API-BD5T	101
199ASV-2200	212	1C-3101P	81	1SC-2100C-DEVR	88	1TAG-API-DEF	101
199ASV-3075	212	1C-3101P / 1SC-3101P	80	1SC-2100C-PEVR	88	1TAG-API-DEFT	101
199ASV-3100	212	1C-3112D	79	1SC-2105	88, 90	1TAG-API-E15	101
199ASV-3150	212	1C-3112D / 1SC-3112D	80	1SC-2115-DEVR	88	1TAG-API-E15T	101
199ASV-3200	212	1C-3112P	79	1SC-2115-PEVR	88	1TAG-API-E25	101
19DB-0075	179	1C-3112P / 1SC-3112P	80	1SC-2115C-DEVR	88	1TAG-API-E25T	101
19DB-0075L	179	1C-3122D	79	1SC-2115C-PEVR	88	1TAG-API-E85	101
19DEF Series	179	1C-3122D / 1SC-3122D	80	1SC-2155	88	1TAG-API-E85T	101
19DEF-0500SS	179	1C-3122P	79	1SC-3101P-O	101	1TAG-API-Kero	101
19DEF-050LSS	179	1C-3122P / 1SC-3122P	80	1SC-3112D	79	1TAG-API-KeroT	101
19DEFM-0500SS	179	1C-3132D	79	1SC-3112D-R	101	1TAG-API-MG0	101
19DEFM-050LSS	179	1C-3132D / 1SC-3132D	80	1SC-3112D-W	101	1TAG-API-MG0T	101
19DF-0100	179	1C-3132P	79	1SC-3112D-Y	101	1TAG-API-MG10	101
19DFL-0100	179	1C-3132P / 1SC-3132P	80	1SC-3112P	79	1TAG-API-MG10T	101
19DHS-0075	179	1C-3142D / 1SC-3142D	80	1SC-3112P-O	101	1TAG-API-MW	101
19DHS-0075L	179	1C-3142P / 1SC-3142P	80	1SC-3112P-R	101	1TAG-API-MWT	101
19DM-0100	179	1C-31512D	79	1SC-3112P-W	101	1TAG-API-OFF	101
19DML-0075	179	1C-31512D / 1SC-31512D	80	1SC-3112P-Y	101	1TAG-API-OFFB5	101
19DML-0100	179	1C-31512P	79	1SC-3122D	79	1TAG-API-OFFB5T	101
19DS-0075	179	1C-31512P / 1SC-31512P	80	1SC-3122P	79	1TAG-API-OFFT	101
19DS-0075L	179	1C-31532D	79	1SC-3132D	79	1TAG-API-PG0	101
1A Nozzle	231	1C-31532P	79	1SC-3132D-R	101	1TAG-API-PG0T	101
1C-2100 (EVR)	224	1C-31RTR-X	80	1SC-3132D-W	101	1TAG-API-PG10	101
1C-2100-DEVR	86	1C3101P	226	1SC-3132D-Y	101	1TAG-API-PG10T	101
1C-2100-PEVR	86	1CL-KIT	134	1SC-3132P	79	1TAG-API-RF0	101
1C-2100C-DEVR	86	1DK-2100	224	1SC-3132P-O	101	1TAG-API-RF0T	101
1C-2100C-PEVR	86	1DK-2100-EVR	80, 81, 83,	1SC-3132P-R	101	1TAG-API-RF10	101

OPW Alphanumeric Product Index

Product Number	Page	Product Number	Page	Product Number	Page	Product Number	Page
1TAG-API-RF10T	101	205987-KIT	80	21GU-H11	157	241TPS-75RF	161, 166
1TAG-API-RG0	101	205987-KIT + 205988-KIT +		21GU-H12	157	25-0110	193
1TAG-API-RG0T	101	211465	80	21GU-H15	157	25-0120	193
1TAG-API-RG10	101	205988-KIT	80	21GU-H17G	157	269-0085	113
1TAG-API-RG10T	101	206010-KIT	80	21GU-H21	157	28C	175
1TAG-API-VR	101	206011-KIT	80	21GU-HRS	157	28C-0028	175
1TAG-API-VRT	101	206215-KIT	80	21GU-SPOUT-SA	156	28R-2404	145
200TG Series		206215-KIT + 205988-KIT +		21GU-SPOUT-SA-N	156	28S-0350	145
200, 206, 221, 230		206740-KIT	114	21GU-SSB	156	295AF	184, 190
200TG-ENG	206	211465	80	21Gu™	155, 156	295AF-0100	184
200TG-ENG40	206	217500	80	221AST	231	295KLG-0200	187, 188
200TG-MET	206	217501	80	23 Series	128, 211	295KLG-0250	187, 188
200TGMET40	206	217502	8	23-0033	128, 211	295KLG-0300	181, 182
201 Series	221	20S	231	23-0044	128, 211	295KLG-0350	181, 182
202 Series	230	21 BV	11	23-0055	128, 211	295KLG-0400	181, 182
202135-KIT	80	210 Series	220	233 Series	120, 122, 219	295SA	181, 182, 190
202135-KIT + 202137-KIT +		210-0104	189, 190	233-4420 (Tee)	120	295SA-0135	
211465	80	210-0105	189, 190	233-4422 (Cross)	120	181, 182, 183, 190	
202135-KIT + 206010-KIT +		210493-KIT	80	233-4430 (Tee)	120	295SA-0136	
206017	80	211 REMOTE	231	233-4432 (Cross)	120	181, 182, 183	
202135-KIT + 206011-KIT +		211 Series	226	233-4433 (Cross)	120	295SA-0137	
206017	80	211-RMOT	202, 205	233SD	224	181, 182, 183	
202135-KIT + 210493-KIT +		211AST	231	233V	224	295SA-0138	
206017	80	21BV	200	233VM	224	181, 182, 183, 190	
202136-KIT	80	21BV Series	230	233VP	120	295SA/SAC	183, 220
202136-KIT + 202137-KIT +		21BV SS	221	233VP-6046	120	295SAC	182
211465	80	21BV-0075	11, 202	233VTS	224	295SAC-0156	181, 182,
202136-KIT + 206010-KIT +		21BV-0150	11	241 Swivels	220	183, 190	
202136-KIT + 206011-KIT +		21BV-0200	11	241TPS...	146, 166, 230, 231	295SAC-0157	181, 182,
206017	80	21BV-0200SS	11	241TPS - 1"	161	183, 190	
202136-KIT + 210493-KIT +		21BV-0300	11	241TPS - 3/4"	161	295SAC-0158	181, 182,
206017	80	21Gu Series	157	241TPS Series	161	183, 190	
202137-KIT	80	21GU-0400	156	241TPS-0241..	150, 161, 166	295SACJ-0200	181, 182,
202F	209	21GU-040G	156	241TPS-0241C	159	183	
202F-0600	209	21Gu-0500	155, 156	241TPS-0492	146, 161,	295SAJ ..	181, 182, 190, 220
203193-KIT	80, 81	21Gu-050G	155, 156		166, 220, 230	295SAJ-0200	181, 182,
203194-KIT	80, 81	21GU-BCS	156	241TPS-1000	161, 166	183, 190	
205-0340	204	21GU-FLTR	156	241TPS-10RF	161, 166	295SC	187, 188

OPW Alphanumeric Product Index

Product Number	Page	Product Number	Page	Product Number	Page	Product Number	Page
2955C Series	220	36S-5090	160, 166, 193	523V		5BE-0100	141
2955C-0139	187, 190	37" WSP37-16S	94	127, 224, 225, 228, 231		5BF-0112	151
2955C-0141	187, 190	37" WSP37-8S	94	523V & 623V	230	5BH-0115	153
2955WK-0007	182	37MAT-CM12	134	523V Series	221	5BH-5115	153
2955WK-0009	182, 188	37MAT-PL12	134	523V Series	127, 219	5BHB-0125	153
2955WK-0013	182	39CD-PL10	133	523V-1100	127	5BPF-0172	151
2955WK-0014	182, 188	39CD-RL10	133	523V-1150	127	5BPS-2117	145
296-0040	186, 189	39CD-WT10	133	523V-2200	127	5BPS-2117XC	148
296-0080	186	3VW-0450	170	523V-2203	127	5BS-2110	145
296CA	190	400 Series	122	523V-2250	127	5BS-2110XC	148
296CA-4000	186, 190	400, 500 Series	96	523V-2253	127	5D-0125	180
296CJ	190	411-5-gallon	96	523V-3100	127	5D-0126C	180
296CJ-0100	183, 190	42MAT-CM12	134	523V-3150	127	5VW-2000	170
297-9020	186, 188, 189, 190	42MAT-PL12	134	523V-3200	127	6000 Series	217
297-9030	186, 188, 189, 190	44 & 44N	231	523V-3203	127	6000-SMK3	69
297-9040	186, 190	44-0044	167	523V-3253	127	6000-SMK4	69
297AF-9070	184	444TA	200, 207	53-0036	120	6000-SMK5	69
297SA	190	444TA Series	221	53FC	224	6000P-B24	69
297SA-9050	183, 190	444TA-0100	207	53V Series	226	6000P-B30	69
297SA-9060	183, 190	44CD-PL10	133	53VML	121, 122, 224	6000P-B36	69
301 Series	221, 230	44CD-RL10	133	53VML-0060	121	6000P-B42	69
301-4080	208	44CD-WT10	133	53VML-0120	121	6000P-B48	69
301-6080	208	44N-1044	167	53VML-0160	121	6000P-B60	69
301-8080	208	44TA-LLFS	207, 230	53VML-0180	121	6000P-CFB	69
301M-4081	208	45 Swivels	220	53VML-2070	121	6000P-SMP	69
301M-4161	208	45-5060	160, 166	53VML-3050	121	6013-SFR6W3L5-ASSY	66
30MV	121, 122, 224	45-5075	160, 166	53VML-3110	121	6013-SFR6W4L5-ASSY	66
30MV Series	226	5000 Series	217	53VML-3120	121	6013P-EHCW3L30	68
30MV-KIT	121	500L	224	53VML/30MV Series	219	6013P-EHCW4L30	68
311 Series	220, 226	511 Series	226	561EVR	96	6013P-ER6W3L18	68
331 Series	231	511-5-gallon	96	571EVR	96	6013P-ER6W3L30	68
332 AST Series	226	511EVR	96	5BBH-0136	153	6013P-ER6W4L12	68
332 Series	231	515ML	210	5BBH-5136	153	6013P-ER6W4L18	68
36S	160, 166, 193, 230	515ML-1030	210	5BBPI-0492	146	6013P-ER6W4L30	68
36S Swivels	220	521EVR	96	5BBPS-2137	145	6013P-HG05	68
36S-5080	160, 166, 193	523A-1003	127	5BBPS-2137XC	148	6013P-HG06	68
		523SA-1002	127	5BBS-2135	145	6013P-HG07	68
		523SA-1003	127	5BBS-2135XC	148	6013P-HG08	68

OPW Alphanumeric Product Index

Product Number	Page	Product Number	Page	Product Number	Page	Product Number	Page
6013P-HGL	68	6100-9000	198	61AS-3"	104	61SOM	224
6013P-HGR	68	6100-AGBR	198	61AS-4"	104		
6013P-Link	69	6100-AGLC	198	61fSTOP-1000	200, 203, 204	61SOM & 71SOM Series	219
6013P-R6C	69	6100-AGNV	198	61FT	204	61SOP	118, 224
6013P-S01	69	6102-1000	196	61FT-0206	204	61SOP	104
6013P-S015	69	6102-1039P	196	61FT-0312	204	61SOP-4002	119
6013P-S02	69	6102-1078P	196	61fSTOP	200, 203, 204, 221, 230, 231	61SOP-4012	119
6013P-S025	69	6102-1100	196	61fSTOP Series	231	61SOR	118
6013P-S03	69	6102-4000	196	61fSTOP-2000	203	61SOR	118
6013P-S035	69	6102-6000	196	61fSTOP-3050	203	61SOR-4000	118, 119
6013P-S04	69	6102-8000	196	61fSTOP-XXXX Series	231	61SOR-400C	119
6013P-S05	69	6102-AST	196	61fSTOP-XXXXT Series	231	61SPVC	112
6013P-S06	69	6102-DW1037	197	61JSK	84	61SPVC-4000	112
6013P-S07	69	6102-DW2037	197	61JSK (EVR)	224	61SPVC-4015	112
6013SS-SFR6W3L5-ASSY	66	6102-EC01	197	61JSK-4410	84, 117	61SPVC-4020	112
6013SS-SFR6W4L5-ASSY	66	6102-EC02	197	61JSK-44CB	84, 117	61T	123, 224
6013SSP-Link	69	6110-2410	137	61JSK-4RMT	117	61T Series	219
60V	225	6110-3010	137	61SA	103, 104, 224	61T-0212	206
60V Series	63, 219	6110-30WT	137	61SA Tool	224	61T-4	123
60V-1000	63	6110-3710	137	61SA-TOOL	81, 103, 104, 108, 224	61T-7368	123
60V-DEF-SS	65, 219	6110-37WT	137	61SALP	102, 104, 225	61T-DEF	123
60VK-1002	63	6110-4010	137	61SALP & 634LPC	102	61T-DEF Series	219
60VK-1003	63	6110-4200	137	61SALP & 634TT	102	61T-DEF-0412	123
60VP 2	24, 225	6110-42WT	137	61SALP & E85 Series	219	61T-SS Series	219
60VP-1001	63	6110-42WT18	137	61SALP-1020-EVR	103	61TC	123
60VP-101L	225	6110-48WT	137	61SALP-EVR	224	61TC-7270	123
60VS Series	64	6111 & 61TP Series	219	61SALP-MA	103	61TC-7272	123
60VS-1000	63, 64	6111-1400	124	61SO	224	61TCP	123, 224
60VSK-1002	64	6111-1400 (EVR)	224	61SO & 71SO Series	219	61TCP-3800	123
60VSP	224, 225	6120-24WT	137	61SO Series	123, 225, 226	61TEST-2	204
60VSP-1001	63, 64	6120-30WT	137	61SO-EVR	226	61TEST-3	204
60VSPC	224, 225	6120-37WT	137	61SOC	118	61TG (4000)	123
60VSPC-1001	64	6120-42WT	137	61SOC-4001	119	61TNG	226
6100-4000	198	6120-48WT	137	61SOC-4011	119	61TP	124
6100-5000	198	61ARM-2000	204	61SOK-0001	117, 119	61TP-2398	124
6100-6000	198	61AS	107, 224, 225			61VSA	102, 108, 110, 200
6100-7000	198	61AS-2477	107			61VSA (EVR)	224
6100-8000	198						

OPW Alphanumeric Product Index

Product Number	Page	Product Number	Page	Product Number	Page	Product Number	Page
61VSA & 1711LPC	102	633LC	104	66-1300	165	66V 1	46, 166, 230, 231
61VSA & 1711T	102	633LC-1000	104	66CAS	173, 228, 230	66V Series	165, 220
61VSA & E85 Series	219	633T	102, 103, 104, 224, 225	66CAS-0300	173	66V-0300	165, 166
61VSA Series	225	633T & 634LPC	102	66CL/CSU/CLP	228, 231	66V-030RF	165, 166
61VSA-1020-EVR	108, 122, 228	633T & 634TT	102	66CLP	176, 230	66V-030RF 3/4"	166
61VSA-MA	108	633T-8060	103	66CLP-5100	176, 228	66V-0492	146, 166, 230
6211 Series	231	633T-8070	103	66EZR	230	66V-0492 Series	220
6211-R	202	633T-8075	103	66H Series	165	66V-1300	165, 166
6211-RMOT	200	633T-8076	103, 219	66H-08575	150, 165, 166	66V-130RF	165
6211R-15-LegKit	202	633TC	104, 118, 123	66H-08575-E25	166	66V-1350	165, 166
6211R-20-LegKit	202	633TC-8090	104	66H-08575-E85	166	66V-135RF	165
6211R-30-LegKit	202	633TCP	104, 118, 123, 224	66H-08575-LP	150, 166	66VL	225
6221 AST	201	633TCP-3803	104	66H-08575-LP	165	68EZR	166
6221 Series	231	633TE	104	66H-0975	150, 165, 166	68EZR 1"	163
6221-ASTW32	201	634 Series	105	66H-0975-E25	166	68EZR 3/4"	163
6221-ASTW34	201	634LPC	102, 106, 224, 225	66H-0975-E85	166	68EZR Breakaway	220
6221-ASTW72	201	634LPC-040	219	66H-0975-LP	150, 165, 166	68EZR Series	163
6221-ASTW74	201	634LPC-0400 - Gray	106	66H-1300	165	68EZR-1010	163, 166
623V	126, 225	634LPC-0400D - Yellow	106	66ISB	172, 228, 230	68EZR-10RF	163, 166
623V Series	221	634T	118, 119	66ISB-5100	172	68EZR-7575	150, 163, 166
623V Series	219	634TE	106, 225	66ISU	228	68EZR-75RF	163, 166
623V XXXX	230	634TE-7085	106	66PRK	5015, 192	696J	190
623V-2203	126	634TT	102, 105, 118, 119, 123, 225	66PRK-5020	192	696J-7010	183, 190
623V-3203	126	634TT (EVR)	224	66RB	231	7 Series	154
62M	104, 111, 224, 225, 231	634TT-4000	105	66REC	164, 166, 220, 230, 231	70 Series	72
62M & E85 Series	219	634TT-7085-EVR	105	66REC-1000	164, 166	70-0070	72
62M-0375	111	634TT-7085-EVR	219	66S-0075	165	700L	224
62M-0500	111	634TTM	104, 112	66S-1300	165	70S	225
62M-MA	111	634TTM-7087	112	66SB	162, 166, 220, 230, 231	70S-0075	72
62MAB	225	6500 Series (EVR)	224	66SB-1010	162, 166	71JSK	84, 225
62MBB	225	6511-RB16	96	66SB-7575	162, 166	71JSK-44MA	84, 117
62PMC	104, 112	6521-XAR37	96	66SP	192	71SO	116
62PMC-0400	112	6521-XAR42	96	66SP-5150	192	71SO Series	225, 226
62TT	107, 224	6521-XAR48	96	66SP-5200	192	71SO Testable	114
62TT-7085	107	66-0075	165	66SRK-1000	173	71SO Testable Series	226
633LC	224					71SO-4000	117
						71SO-400C	117
						71SO-400C/410C/420C (T)..	

OPW Alphanumeric Product Index

Product Number	Page	Product Number	Page	Product Number	Page	Product Number	Page
	224	7HB-0400-XC	148	AXP40-Connect	8	C05223M	99
71SO-400CB	117	7HB-0900	153	AXP60-100	8	C05235M	198
71SO-400CT	114	7HB-0900-B20	153	AXP60-500	8	C05236M	198
71SO-4010	117	7HB-0900-XC	148	BGP-2075	12	C05238M	196
71SO-410C v.....	117	7HB-5009	153	BGP-2100	12	C05239M	197, 198
71SO-410CB	117	7HB-5100	153	BGP-2150	12	C05261M	196
71SO-410CT	114	7HB-5100-B20	153	BGP-220	12	C05295M	207
71SO-420C	117	7HB-5400	153	BMA-1515	15	C05446M.....	80
71SO-420CB.....	117	7HB-5400-B20	153	BMA-2020	15	C05501	98
71SO-420CT	114	7HB-5900	153	BMA-3030	15	C075A.....	7
71SO-B Series	219	7HB-5900-B20	153	C01094RB	106	C075A-1000	7
71SO-TOOLCT	117	7HB®	148	C010A-CLXXX	7	C075A-250	7
71SOM-412C	117	7HB®	152	C01288I	209	C075A-CLXXX	7
723V	125, 225	80-0800	154	C01289M	209	C10	222
723V Series	219	821	200, 213	C01533RB	214	C10A	7, 222
723V-2203	125	821 Series	221, 230	C02115A	183, 188	C10A-1000	7
723V-3203	125	821-0150AC	213	C02642M	109	C10A-250	7
7H Series	220, 230, 231	821-0200AC	213	C03144M	214	C15	222
7H-0100	153	82RV	213	C03420NM	184	C15A.....	7, 222
7H-0100-B20	153	82RV-2505	213	C03422	184	C15A-1000.....	7
7H-0400	153	83-0022	113	C03485M	107	C15A-1225	7
7H-0400-B20	153	89-0044	122	C03632M	119	C15A-1228.....	7
7H-0900	153	8B-0500	154	C03749	119	C15A-1230.....	7
7H-0900-B20	153	8BL-0400	154	C03899M	117, 119	C15A-1233	7
7H-5100	153	8G-0100	154	C03991M	210	C15A-1240	7
7H-5100-B20	153	8GL-0750	154	C04093M	204	C15A-1400	7
7H-5400	153	8HBL-0400	154	C04101B	88	C15A-250	7
7H-5400-B20	153	8HG-0100	154	C04114RS	204	C15A-350	7
7H-5900	153	8HO-0800	154	C04141M.....	88	C15A-375	7
7H-5900-B20	153	8HR-0300	154	C04400M	47	C15A-500	7
7H®	148, 152	8HY-0900	154	C04438M	204	C20	222
7HB Series	220, 230, 231	8R-0300	154	C04495M	186, 188, 189	C20A	222
7HB-0090	153	8S-0200	154	C04785M	92	C20A / V20	7
7HB-0100	153	8Y-0900	154	C05086M	125, 126	C20A-1225	7
7HB-0100-B20	153	90K-KLS	133	C05117	117	C20A-1228	7
7HB-0100-XC	148	AST 00-40001C.....	228	C05122	125, 126	C20A-1233	7
7HB-0400	153	AXP40-100	8	C05165M	206	C20A-250	7
7HB-0400-B20	153	AXP40-250	8	C05170M	96, 98	C20A-375	7

OPW Alphanumeric Product Index

Product Number	Page	Product Number	Page	Product Number	Page	Product Number	Page
C20A-500	7	D02095M	54, 55	DS-DEF-1836	46	DSW-1630	38, 39, 43
C20A-800	7	D02141M	170	DSC-4021B	54	DSW-1922	38
C30	222	D02147M	197	DSE Series	222	DW-VAC-TEST	79
C30A	7, 222	D02212	42, 43	DSE-1543	39, 40, 41	E00274AG	184
C30A-0528	7	D02213	42, 43	DSE-1741	40	E00324M	154
C30A-100	7	D02508	117	DSE-1836	40, 41, 46	E00325M	154
C30A-250	7	D02536	43	DSE-BASE	40, 41	E00491	92
C30A-375	7	D02571M	99	DSE-TOP-1543	40	E00508M	136, 139
C30A-500	7	D02575M	99	DSE-TOP-1741	40	E00510M	136, 139
C30A-600	7	D02628M	197	DSE-TOP-1836	40	E00512M	136, 139
CME-200	13	D02671M	198	DSF Series	222	E00514I	138
CMM-200	13	DP-1117F	38, 39, 45	DSF-1120	39	E00514M	139
CMP-200	13	DP-1123	39, 45	DSF-1123	42	E00515I	138, 139
CO5170M	99	DP-1123F	38, 39, 45	DSF-1123F	38, 39, 42	E00516I	138, 139
CO75	222	DP-1543	39, 45	DSF-1630	38, 39	E00584M	136
CO75A	222	DP-1630	38, 39, 45	DSF-1836	38	E00590M	42, 43
CSK-0075S	13	DP-1836	38, 45	DSF-1836C	38, 44	E00618	133
CSK-0100S	13	DPC Series	219	DSFE-4612	54	E00622	133
CSK-0150S	13	DPC-2150A	11, 13	DSL	23	E00626	133
CSK-0200S	13	DPC-2200A	11, 13	DSLFL	23	E00630	133
CSK-0300S	13	DPC-2300A	11	DSLFR	24	E00713	133
CXXA	219	DS-1036	38, 44	DSLGL	32	E00714	133
D00173M	139	DS-1117F	38, 39, 44	DSLH	27	E25 Series	220
D00800B	113	DS-1120	39, 44	DSLH/DSLHF-XX-1535-XXX	46	E85 Series	220
D01529M	154	DS-1123	39, 44	DSLH/DSLHF-XX-1836-XXX	46	EBF-0150	51
D01530M Barrel	154	DS-1123B	38, 44	DSLH/DSLHF-XX-1836-XXX	46	EBF-0200	51
D01532M	154	DS-1123F	38, 39, 44	DSLHF	27	EBF-0200F	51
D01719M	154	DS-1229	39, 44	DSLHFN	27	EBF-0300	51
D01756	119	DS-1242	39, 44	DSLHN	27	EBF-0400	51
D01773M	154	DS-1535	46	DSLHN	27	EBF-0600	51
D01774M	154	DS-1543A	38, 39, 44	DSLNR	32	EBF-0751	51
D01775M	154	DS-1630	38, 39, 44	DSLNR	32	FBN-2075	14
D01776M	154	DS-1630B	44	DSLNR	32	FBN-2100	14
D01789M	154	DS-1642	38, 39, 44	DSLXX-DEF-XX-1535L/R	46	FBN-2150	14
D01790M	154	DS-1741	39, 44	DSLXX-DEF-XX-1836	46	FBN-2200	14
D01791M	154	DS-1836	38, 44, 46	DSW-1120	39	FBN-3200	14
D01874M	88	DS-1928	39, 44	DSW-1123	39, 43	FC-10	95
D02078M	154	DS-DEF-1535	46	DSW-1123F	38, 39, 43	FC-10-BLACK	95

OPW Alphanumeric Product Index

Product Number	Page	Product Number	Page	Product Number	Page	Product Number	Page
FC-10-BLUE	95	FCS42-EX12	17, 18	FL100GRAY-MP16S-SK12-R.	94	FL90-SEAL	131
FC-10-GRAY	95	FCS48-EX12	17, 18	FL100GRAY-MP16S-SK12-W	94	FL90-SK12	131
FC-10-ORANGE	95	FCSD-1-4233CR	17	FL100GRAY-MP16S-SK12-W	94	FL90-SK12_A	130
FC-10-RED	95	FCSD-1-4233SB	17	FL100GRAY-MP16S	94	FL90BLACK	130
FC-10-SEAL	95	FCSD-1-4837CR	17	FL100GRAY-OF8S	94	FL90BLACK-SK12	130
FC-10-WHITE	95	FCSD-2-4233CR	17	FL100GRAY-OF8S-SK12-Y	94	FL90F	131
FC-10-YELLOW	95	FCSD-2-4233SB	17	FL100GRAY-SK12	130	FL90GRAY-SK12	130
FC-11-BLUE	94	FCSD-2-4837CR	17	FL120-SEAL	131	FLMP-IP	94
FC-11-Orange	94	FCSM-1-4233CR	17	FL120-SK12	131	FLMP-SB	94
FC-11-RED	94	FCSM-1-4233SB	17	FL120BLACK	130	FSA-400	84, 118, 224
FC-11-SEAL	94	FCSM-1-4837CR	17	FL120BLACK-MW	138	FSA-400-S	84
FC-11-WHITE	94	FCSM-2-4233CR	17	FL120BLACK-MW-SK12	138	FSS-50	48
FC-11-YELLOW	94	FCSM-2-4233SB	17	FL120BLACK-SK12	130	FTS Series	222
FC075-MM12	70	FCSM-2-4837CR	17	FL120F	131	FTS-4233TH	17, 18
FC10-MM12	70	FCXX Series	219	FL180-SEAL	131	FTS-4237TH	17, 18
FC10-MM18	70	FDS-4319	39	FL180-SK12	131	FTS-4837TH	17, 18
FC10-MM24	70	FIB-KHB	131	FL180BLACK	130	FTSD-4233CR	18
FC15-MM12	70	FIB-KHP	131	FL180BLACK-SK12	130	FTSD-4233SB	18
FC15-MM14	70	FIB2-RL-KEY	131	FL180F	131	FTSD-4237CR	18
FC15-MM18	70	FIT-3530	47	FL36BLACK	130	FTSD-4237SB	18
FC15-MM24	70	FK-5-1-12	48	FL42BLACK	130	FTSD-4837CR	18
FC15-MM30	70	FL100 SK12 D	130	FL600-SEAL	131	FTSD-4837SB	18
FC15-SWM12	71	FL100-SEAL	131	FL600-SK12	131	FTSDBASE-42CR	17, 18
FC15-SWM14	71	FL100-SK12	131	FL600BLACK	130	FTSDBASE-42SB	17, 18
FC15-SWM18	41, 71	FL100BLACK	130	FL600BLACK-SK12	130	FTSDBASE-48CR	17, 18
FC15-SWM24	71	FL100BLACK-SK12	130	FL7	131	FTSM-4233CR	18
FC20-MM12	70	FL100F	131	FL760-SEAL	131	FTSM-4233SB	18
FC20-MM14	70	FL100G-RETRO-MP3716S-BU	94	FL760-SK12	131	FTSM-4237CR	18
FC20-MM18	70	FL100G-RETRO-MP3716S-R	94	FL760BLACK	130	FTSM-4237SB	18
FC20-MM24	70	FL100G-RETRO-MP3716S-W	94	FL760BLACK-SK12	130	FTSM-4837CR	18
FC20-MM36	70	FL100G-RETRO-OF378S-Y	94	FL760F	131	FTSM-4837SB	18
FC20-SWM12	71	FL100GRAY	130	FL7A	131	FTSMBASE-42CR	17, 18
FC20-SWM14	71	FL100GRAY-MP16S-SK12-BU	94	FL7A-ENCL	131	FTSMBASE-42SB	17, 18
FC20-SWM18	71	FL90	130			FTSMBASE-48CR	17, 18
FC20-SWM24	71					FTSMBASE-48SB	17, 18
FC30-MM18	70					H00113RA	186, 189
FC30-MM24	70					H00113RAG	186
FCS Series	222					H00122M	128

OPW Alphanumeric Product Index

Product Number	Page	Product Number	Page	Product Number	Page	Product Number	Page
H00136M	186, 189	H05064M	182, 188	H08441RS	183, 188	H11293M	214
H00195RB	186, 189	H05087M	183, 188	H08879M	182, 188	H11361M	59, 62
H00250RB	186	H05088M	182, 188	H08881M	183, 188	H11421RS	206
H00252RA	186	H05135M	183, 188	H08882M	183, 188	H11432M	127, 210
H00520RB	186	H05198M	182, 188	H08884M	183, 188	H11456M	127
H00538RE	186	H05289M	103	H08886M	182, 188	H11499M	183
H00999M	189	H05297M	183	H08887M	182, 188	H11547DI	214
H01227M	182, 188	H05361	62	H08889M	183, 188	H11592AH	186
H01344M	214	H05719RE	189	H08890M	183, 188	H11620M	132
H01461AH	189	H05783DI	113	H08892M	183, 188	H11671M	92
H01505RB	214	H05784M	113	H08989M	109	H11923M	154
H01608M	113	H05973M	214	H09039M	103, 107, 108, 111	H11925M	186
H01814	186	H06026M	183	H09212	183, 188	H11930	120
H01817	186	H06045M	183, 188	H09213	183, 188	H11931M	117, 119
H01818	186	H06449RE	209	H09214	183, 188	H12070M	214
H01841	189	H06475RE	209	H09215	183, 188	H12071R	214
H01967M	128, 210	H06733M	186	H09365M	183, 188	H12229M	80, 81, 83, 86, 90
H01969M	128	H06742RE	186	H09366M	183, 188	H12267	80
H02477M	182, 188	H07012M	186, 189	H09367M	182, 188	H12280M	92
H03295M	214	H07062M	183, 188	H09417	182, 188	H12319M	183, 188
H03636M	210	H07353M	210	H09420	182, 188	H12320M	183, 188
H03666M	186	H07355M	210	H09600AH	186	H12617M	204
H03981RE	182, 188	H07356B	210	H09601AH	186	H12620	92
H04035M	214	H07580M	182, 188	H09712RS	182, 188	H12705M	183, 188
H04145M	107, 109	H07593M	183, 188	H09713RS	182, 188	H12706M	182, 188
H04150M	109	H07595M	183, 188	H10003M	214	H12707M	183, 188
H04788M	62	H07613M	183, 188	H10004A	214	H12806M	80, 86, 88, 96
H04825M	183, 188	H07642ZA	214	H10096M	210	H12872M	136, 138
H04828M	182, 188	H07643RB	62	H10387	183, 190	H12873M	136, 138
H04869RE	209	H07644M	214	H10388	183, 190	H12874M	136, 138
H04871M	209	H07659M	62	H10445M	214	H12927M	88
H04873M	209	H07670M	183	H10458M	183	H13257M	54, 55
H04898M	113	H07719	182, 188	H10731RE	106	H13264M	55
H04928	209	H07766M	183	H10765M	106	H13425M	54
H04929M	209	H08163M	186, 189	H10886M	110	H13439M	132
H04981M	209	H08164RE	186	H11199M	111	H13441M	132
H05000M	188	H08165RE	186, 189	H11211M	210	H13588M	198
H05063M	183, 188	H08380AH	210			H13774M	182

OPW Alphanumeric Product Index

Product Number	Page	Product Number	Page	Product Number	Page	Product Number	Page
H13775M	183, 188	H15265M	198	MPWS-33	99	P110-40L	137
H13776M	183, 188	H15265M (P102-2)	197	MPWS-33BD	99	P110-42G	98, 137
H13931M	88, 98	H15266	198	MPWS-33BDD	99	P110-42L	137
H13941M	170	H15267M	206	MPWS-36	99	P110-42WLT	137
H13942M	170	H15268M	80, 86, 88, 96	MPWS-39BD	99	P110-4425L	133
H13943M	170	H15271M	80, 86, 88, 96	NGV1	217	P110-48G	98, 137
H13964M	170	H15294M	109	NT2AP30	217	P110-48L	137
H13971	54	H15325M	206	NT2AP36	217	P110-48WTL	137
H14105M	186, 188, 189	H15411M	207	NTK11-0100	149	P110-8G	137
H14228M	202	H15412M	207	NTK11-0200	149	P110-8L	137
H14460M	133	H15937M	207	NTK11-0300	149	P111-WTL	98
H14461M	133	H32116PA	205	NTK11-0400	149	P111WTL-S	98
H14462M	132	H7635RB	214	NTK11-0500	149	P120-37L	137
H14578M	120	HEF 4010	53	NTK11-0800	149	P120-42L	137
H14580M	170	HEF-0150	50	NTK11-0900	149	P2105BUCKET	98
H14661M	170	HEF-0200	50	OPW 104A/FG	136	P311-14	98
H14662M	170	HEF-0400	53	OPW 116	111	P311-1R	98
H14840M	117	HEF-0751	50	P100-2AST	196	P311-G	98
H14846M	154	HEF-4010	50	P100-4STF	196, 198	P338SPOOL	196, 198
H14858	133	HEF-4015	41	P110-12G	137	P33P	196
H14895M	126	HEF-4015(A/G)	50	P110-12L	137	P40-ROTOLID	98
H14909M	206	HEF-4015	50	P110-16G	137	P411-EVRPL	96, 98
H15005M	105, 110	HEF-4015G	50	P110-16L	137	P500 Series	224
H15144M	80, 86, 88, 96	HEF-4020	41, 50	P110-18G	137	P511-15-EVRDV	95, 96, 98
H15187M	96, 98, 99	HEF-4020(A/G)	50	P110-18L	137	P511-DEVRB-14	98
H15188M	99	HEF-4020G	50	P110-18WT	137	P511-DEVRBUCKET	98
H15190M	99	HEF-4075	50	P110-20LID	92	P511-G14	98
H15210M	197, 198	HEF-4175	50, 53	P110-24G	137	P511-GKIT	98
H15210M	(P102-02) 196	HEF-6030	50	P110-24L	137	P511-PEVRB-14	98
H15211M	196, 197	IC-3100	226	P110-24WLT	137	P511-PEVRBUCKET	98
H15212M	196, 197	IP-2105	81	P110-30G	137	P511BUCKETBOLT	98
H15238M	98	ITR-3015	47	P110-30L	137	P511C-DEVRB-14	98
H15240M	98	ITR-3020	47	P110-30WLT	137	P511C-DEVRBUCKET	98
H15260	198	KEY-HREP-10-76-90	131	P110-37G	98, 137	P511C-PEVRB-14	98
H15261	198	MFPD	156	P110-37L	137	P511C-PEVRBUCKET	98
H15262	198	MFPD-Pak	156	P110-37WLT	137	P511YBUCKET	98
H15263	198	MFVA	171, 230	P110-3950L	133	P521-GKIT	98
H15264	198	MPK-10	47	P110-40G	137	P571-GK3T	98

OPW Alphanumeric Product Index

Product Number	Page	Product Number	Page	Product Number	Page	Product Number	Page
P700 Series	224	PSTF-		S48-3100G-		SCR Series	
P711	96	4630	53, 54	MP3716S-R	94		80
P711-EVRDV	95, 96, 98	PTA-4175	53	S48-3100G-MP3716S-W	94	SEF-1515.....	11, 41, 219
P711-EVRPL	95, 96, 98	PTS-4021.....	54, 56	S48-3100G-OF378S-Y	94	SEF-2020	11, 219
P761	96	QCJ-2512	52	SAB-7400	51	SEF-3030	11, 219
P761C-EVRDV	95, 96, 98	QCT-2512	52	SAJ	183	SFA-1010	219
P761C-EVRPL.....	95, 96, 98	REF-0075C	49	SBA2-0150	13	SFA-7575	219
P761C-FLDV	94	REF0100C	49	SBA2-0200	13	SGP-0150	11
P761C-FLPL	94	REF-0150	49, 50	SBA2-150.....	13	SGP-0200	11
PA 15	60	REF-0200	49, 50	SBA2-300.....	13	SGP-0300	11
PA15-15	60	REF-0200F	49	SBC Series.....	219	SIP-6	99
PA15-20	60	REF-0200X.....	49	SBC-2075.....	12, 53	SL-1100	15, 42, 43, 86
PB-1340	196	REF-0300F	49	SBC-2100	12, 53	SLPK	99
PB-1344.....	196	REF-4015	41, 49, 50	SBC-2150	12	SMA-1010.....	219
PB-1373.....	196	REF-4015DC	49	SBC-2200	12	SMA-1515	219
PB-1394	196	REF-4020	49, 50	SBK-1000J	38, 39, 47	SMA-1520	219
PB-1396	196	REF-4020	41	SBK-1500	38, 39, 41, 47	SMA-2020.....	219
PBOOT	202	REF-4020DC	49	SBK-1500V	47	SMA-3030	219
PC04427	202	RF400	191	SBK-1600	38, 39, 47	SMA-7575	219
PCT-2000	14	RF400-10	191	SBK-1700	39, 47	SPC Series	219
PCT-3000	14	RF400-10P	191	SBK-1800	38, 41, 47	SPC-0075	13
PDT-411	53	RF400-75	191	SBK-1900	38	SPC-0100	13
PJK-4175	53	RF400-75P	191	SBO-0250	47	SPC-0150A.....	13
PK-EZR0100	150	RK-5000	18, 94	SBO-0300	47	SPC-0200A	13
PK-EZR0100-L1	150	ROUNDKIT-14.....	50	SBO-0700	47	SPC-0300	13
PK-EZR0300	150	ROUNDKIT-16	50	SC-ORANGE	101	SRE-2015	11, 41, 219
PK-EZR0400	150	ROUNDKIT-24	50	SC-PLAIN	88	SRT-2151	11
PK-EZR0400-L1	150	RPHK	132	SC-RED.....	101	SSPFC2-150	13
PK-EZR0400-LP	150	RPHK.....	137	SC-Test	80	SSPFC2-200	13
PK-EZR0900-L1	150	S-CR-FGK	18, 94	SC-VAC-TEST	79	SSSBA-150	13
POMECO 100	198	S-TH-FGK	94	SC-WHITE	101	SSSBE-200	13
POMECO 102	196, 197	S42-3100G-MP3716S-BU	94	SC-XXXX (XXX = Color).....		STC-0200	11
PROTO-LOCK	98, 137	S42-3100G-MP3716S-R	94		80, 81	STC-0300	11
PSL-2430.....	55	S42-3100G-MP3716S-W	94	SC-YELLOW	101	STF-1515	41, 219
PSL-3630	55	S42-3100G-OF378S-Y	94	SCC-1515	11	STF-2020	219
PSL-3830	55	S45-1180BL	139	SCC-2015	11	STF-2215.....	41, 219
PST-4630	53, 54	S45-1180G	139	SCC-2020	11	SVD-1522	37
PST-5030	53, 54	S48-3100G-MP3716S-BU	94	SCC-3030	11	SVD-1522E85	37

OPW Alphanumeric Product Index

Product Number	Page	Product Number	Page	Product Number	Page	Product Number	Page
SVD-1522N	37	TSE-4233CR-WT	19				
SVD-1524E85L	37	TSE-4233SB	19				
SVD-1524E85R	37	TSE-4233SB-WT	19				
SVD-1524L	37	TSE-4233TH	19				
SVD-1524NL	37	TSE-4233TH-WT	19				
SVD-1524NR	37	TSE-LID	19				
SVD-1524R	37	TSE-SEAL	19				
SVD-2022	37	TSEBASE-42CR	19				
SVD-2022E85	37	TSEBASE-42SB	19				
SVD-2022N	37	TSM Series	222				
SVD-2024E85L	37	TSS Series	222				
SVD-2024E85R	37	TTE-5	52				
SVD-2024L	37	TTT-2536	52				
SVD-2024NL	37	V20	219				
SVD-2024NR	37	V20-250	7, 9				
SVD-2024R	37	V20-500	7, 9				
SVD-2522	37	VAR75	175				
TBA-0075	52	VP-KIT	11				
TBA-0100	52	VPN4X7	80, 86, 88, 96				
TBA-0150	52	WS-RING-37	94				
TBA-0200	52	WSP-WTS-OPC	95				
TBA-0300	52	WSP33-16	95				
TBA-3015	52	WSP33-8	95				
TBA-3020	52	WSP37-16	95				
TBA-4015	52	WSP37-16S	94				
TBA-4020	52	WSP37-8	95				
TBA-4030	52	WSP37-8S	94				
TBA-4175	53	WT-33SL	17, 18, 19				
TBA-4175A	53	WTS-CAP-14	95				
TBP-100	53	WTS37-16	95				
TC-400	80, 86, 88, 96	WTS37-8	95				
TCT-2509	41, 52	X44TA-0100	230				
TGA-15	52						
TGTA-0400	200, 207						
TJ-200A	52						
TLT-36A	52						
TSD Series	222						
TSE-4233CR	19						