

Southern NZ ROCKY SHORE GUIDE



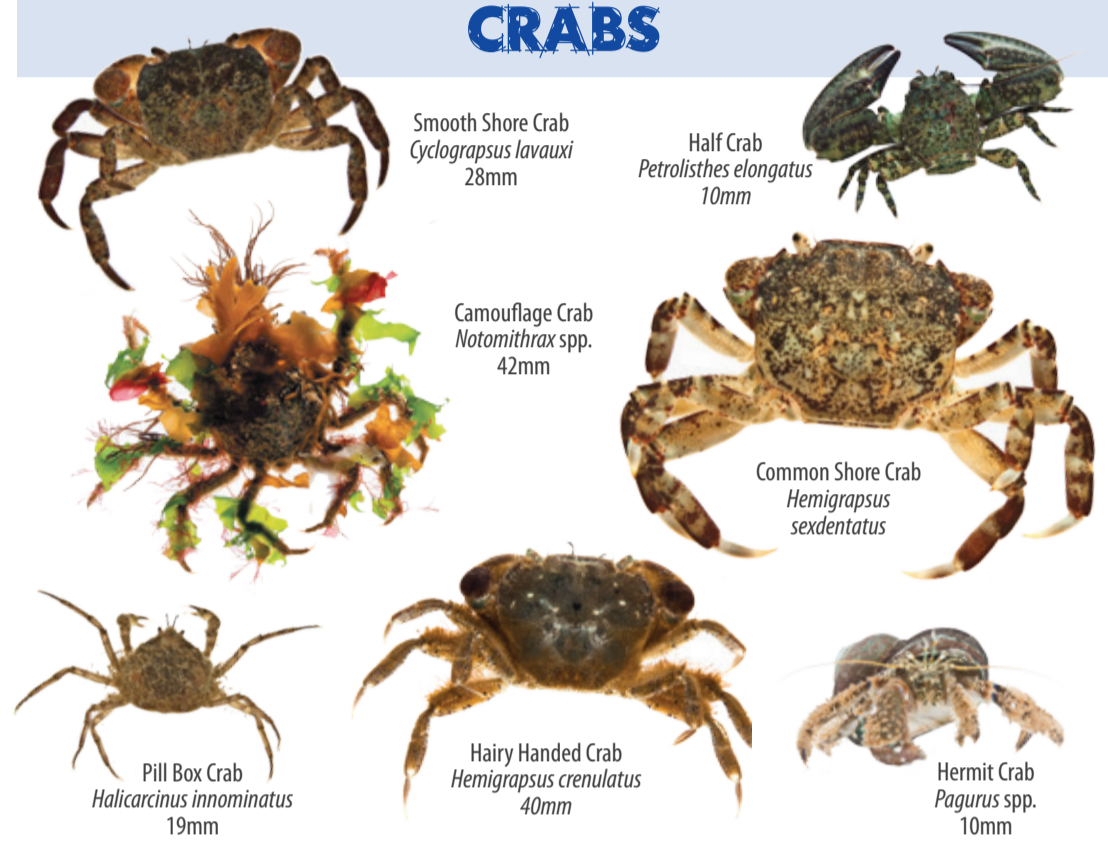
ANEMONES

Tide Pool Anemone *Anthopleura aureoradiata* 30mm
Red Beadlet Anemone *Actinia tenebrosa* 40mm
Jewel Anemone *Corynactis australis* 10mm
White Striped Anemone *Anthothoe albocincta* 20mm
Olive Anemone *Isactinia olivacea* 25mm



SPONGES SHRIMPS & HOPPERS

Encrusting Sponge *Haliclona* spp.
Golf Ball Sponge *Tethya bergquistae* 40mm
Sandhopper Amphipod 5-10mm
Sea Slater Isopod 10mm
Sea Centipede Isopod 20-30mm
Glass Shrimp *Palaemon affinis* 65mm



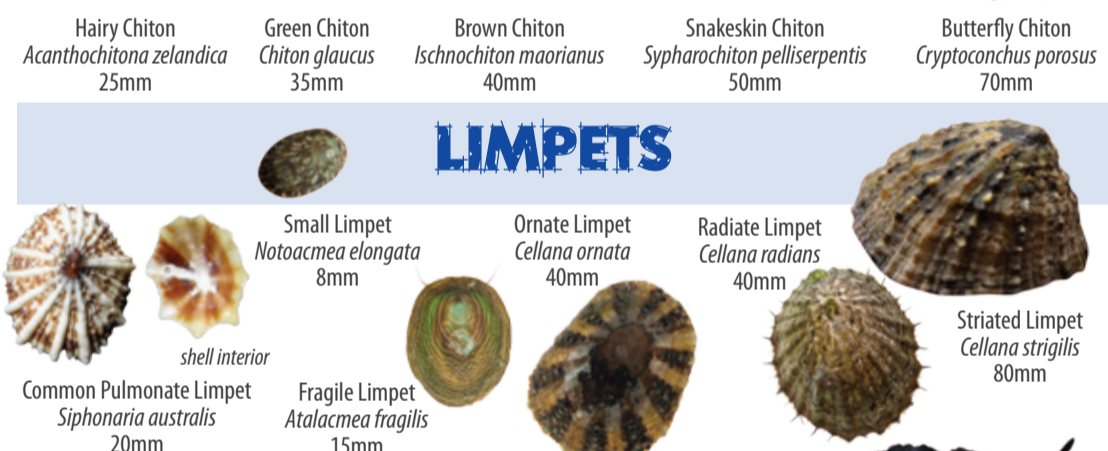
CRABS

Smooth Shore Crab *Cyclograpsus loxvauri* 28mm
Half Crab *Petrolisthes elongatus* 10mm
Camouflage Crab *Notomithrax* spp. 42mm
Common Shore Crab *Hemigrapsus sexdentatus*
Pill Box Crab *Halicarcinus immeminatus* 19mm
Hairy Hand Crab *Hemigrapsus crenulatus* 40mm
Hermit Crab *Pagurus* spp. 10mm



CHITONS

Hairy Chiton *Acanthochitona zelandica* 25mm
Green Chiton *Chiton glaucus* 35mm
Brown Chiton *Ischnochiton moorianus* 40mm
Snakeskin Chiton *Sypharochiton pelliserpentis* 50mm
Butterfly Chiton *Cryptochiton porosus* 70mm



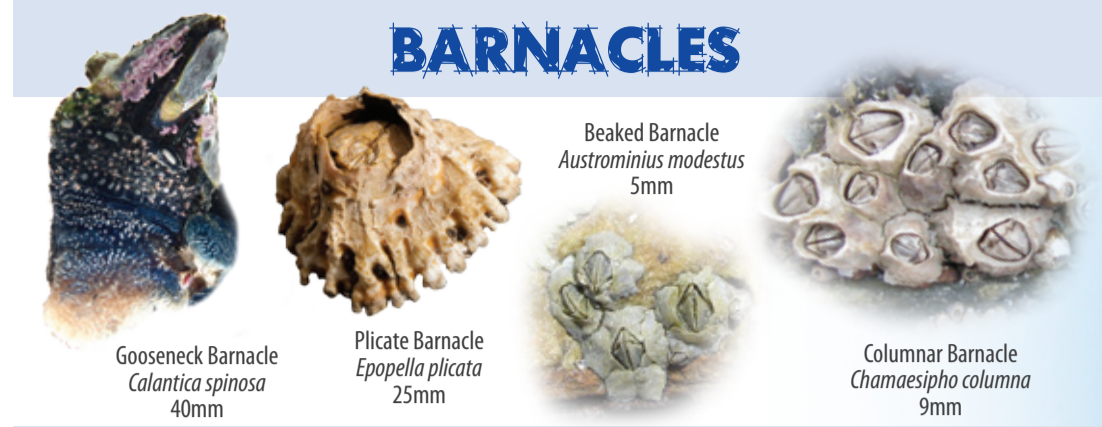
LIMPETS

Small Limpet *Notoacmea elongata* 8mm
Ornate Limpet *Cellana ornata* 40mm
Radiate Limpet *Cellana radians* 40mm
Striated Limpet *Cellana striatilis* 80mm
Common Pulmonate Limpet *Siphonaria australis* 20mm
Fragile Limpet *Atalacmea fragilis* 15mm



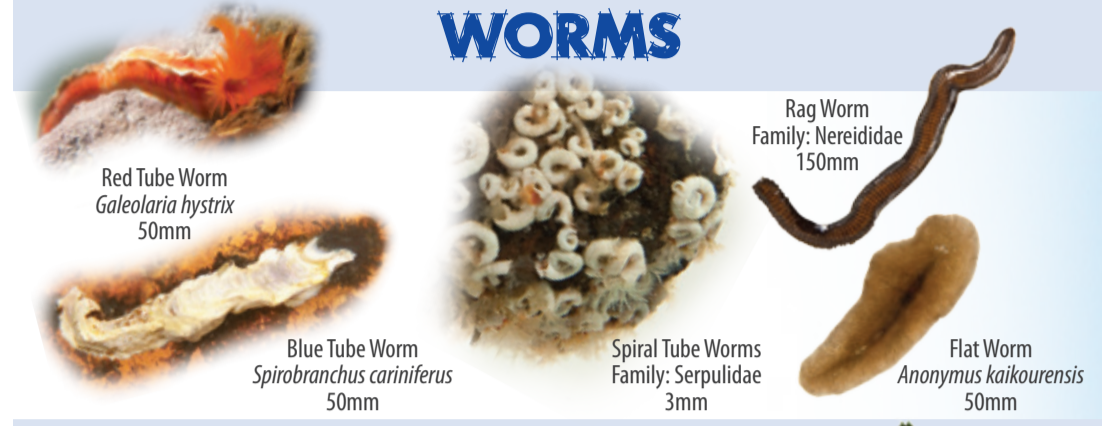
PAUA / SEA SLUGS

Warty Nudibranch *Doris wellingtonensis* 100mm
Lemon Nudibranch *Dendrodoris citrina* 75mm
Duck's Bill Limpet *Scutus breviculus* 150mm
Virgin Paua *Haliotis virginea* 50mm
Yellow Foot / Silver Paua *Haliotis australis* 85mm
Black Foot Paua *Haliotis iris* 250mm



BARNACLES

Beaked Barnacle *Austrorhinus modestus* 5mm
Plicate Barnacle *Epopepla plicata* 25mm
Columnar Barnacle *Chamaesiphonia columnata* 9mm
Goose-neck Barnacle *Calantica spinosa* 40mm



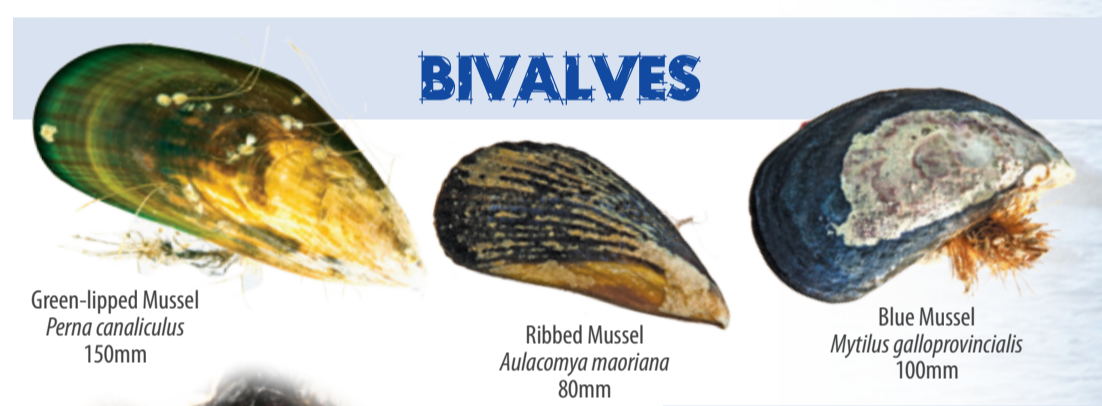
WORMS

Red Tube Worm *Galesolaria hystrix* 50mm
Blue Tube Worm *Spirobranchus cariniferus* 50mm
Spiral Tube Worms Family: Serpulidae 3mm
Flat Worm *Anonymus hokioensis* 50mm
Rag Worm Family: Nereididae 150mm



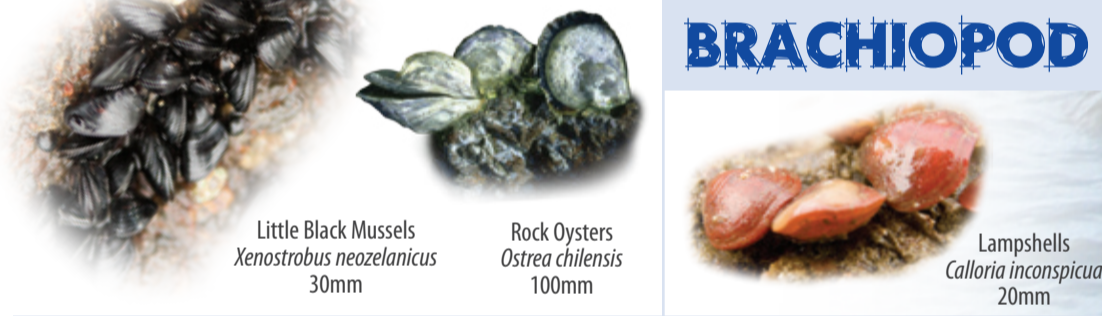
SEA STARS

Three and Three Star *Allostichaster insignis* 150mm
Spiny Sea Star *Coscinasterias muricata* 150mm
Cushion Star *Patriella* spp. 70mm
Reef Star *Stichaster australis* 300mm
Brittle Star *Ophiomya brevifirma* 50mm
Seven Armed Sea Star *Astroble scabra* 360mm



BIVALVES

Green-lipped Mussel *Perna canaliculus* 150mm
Ribbed Mussel *Aulacomya maoriana* 80mm
Blue Mussel *Mytilus galloprovincialis* 100mm



BRACHIOPOD

Little Black Mussels *Xenostrobus neozelanicus* 30mm
Rock Oysters *Ostrea chilensis* 100mm
Lamphells *Calloria incospicua* 20mm



SNAILS

Blue-banded Periwinkles *Austrolittorina antipodum* 8mm
Brown Periwinkles *Austrolittorina cincta* 16mm
Horn Snail *Zeacumantus subcarinatus* 16mm
White Whelk *Haustrum lacunosum* 35mm
Oyster Borer *Haustrum scobina* 35mm
Cat's Eye Snail *Lunella smaragda* 70mm
Spotted Top-shell *Diloma aethiops* 28mm
Black Top-shell *Diloma* spp. 26mm
Lined Whelk *Buccinum linea* 25mm



BRYOZOANS



SEA SQUIRTS

Seaweed Encrusting Bryozoan *Membranopora membranacea*
Rock Encrusting Bryozoan
Flexible Bryozoans *Elezania binderi* 20mm
Colonial Ascidians *Didemnum* spp.
Solitary Ascidians *Asterozocarpus* spp. 40mm
Sea Tulip *Pyura pachydermatina* 400mm
Colonial Ascidians *Botrylloides* spp.
Colonial Ascidians *Distaplia* spp.



FISH

Olive Rock Fish *Acanthaluteres fuscus* 300mm
Common Triplefin *Forsterygion* spp. 50-110mm
Clingfish *Gastroscyphus hectoris* 90mm



GREEN SEAWEEDS

Intestine Weed *Ulva intestinalis* 150mm
Sea Lettuce *Ulva* spp. 300mm
Sea Emerald *Chaetomorpha colliformis* 20mm
Branching Velvet Weed *Codium fragile* 300mm
Sea Rimu *Caulerpa brownii* 300mm
Encrusting Velvet Weed *Codium canaliculatum* 200mm
Byopsis spp. 80mm



BROWN SEAWEEDS



RED SEAWEEDS

Sea Sack *Adenocystis utricularis* 90mm
Filamentous Brown Weed *Ectocarpus* spp. 100mm
Bull Kelp *Durvillaea paha* 3-10m
Hokame *Undaria pinnatifida* 1m
Bladder Kelp *Macrocystis pyrifera* 30m
Encrusting Coralline Algae
Erect Coralline Algae *Arthrocardia corymbosa* 120mm
Karengo *Pyrosoma* spp. 300mm
Pachymenia *dictyota* 500mm
Carragenan Weed *Sarcotelia livida* 200mm
Filamentous Red *Polysiphonia* spp. 150mm
Moss Weed *Bostrychia arbuscula* 50mm

SHOW RESPECT FOR SEASHORE CREATURES



- Tread carefully.
- Leave creatures where you found them.
- Leave attached seaweed in place.
- Handle creatures with care - close to the ground with wet hands.
- Carefully put rocks back to the same position you found them.
- Limit your collection of empty shells as other creatures use them as homes.

AVOID DISTURBING WILDLIFE



- Keep your distance from seabirds including penguins.
- Keep your distance from seals and sea lions.
- Use the zoom on your camera or binoculars for close viewing.
- If sea lions approach you - back away slowly.
- Keep dogs under control.

BE CAREFUL AND KEEP SAFE



- Check tide times to avoid being cut off by rising tide.
- Do not explore the seashore alone.
- Watch for changing weather.
- Look out for waves - never turn your back to the ocean.
- Beware of slippery and uneven rock surfaces.
- Pick up any rubbish found on the shore and dispose of it appropriately.

A handy guide to the common animals and plants living on the rocky seashores of southern New Zealand.

This guide illustrates only some of the more common seashore animals and plants. Visit our website for a comprehensive list, Māori names and information about their ecology.



The NZ Marine Studies Centre (Portobello, Dunedin) provides expert knowledge, research opportunities, educational programmes and resources for schools about New Zealand's marine environment.
Acknowledgements
The Rocky Shore Guide, produced by the NZ Marine Studies Centre, Department of Marine Science, University of Otago, is proudly supported and funded by Mobil Oil New Zealand Limited.
Photographer Tomas Bird. Illustrator Graeme Furness.
Additional photos D. Page, R. Morris, C. Hepburn, P. Crick.
© NZ Marine Studies Centre 2017. All Rights Reserved.

Every effort has been made to ensure the accuracy of this guide at the time of publication.