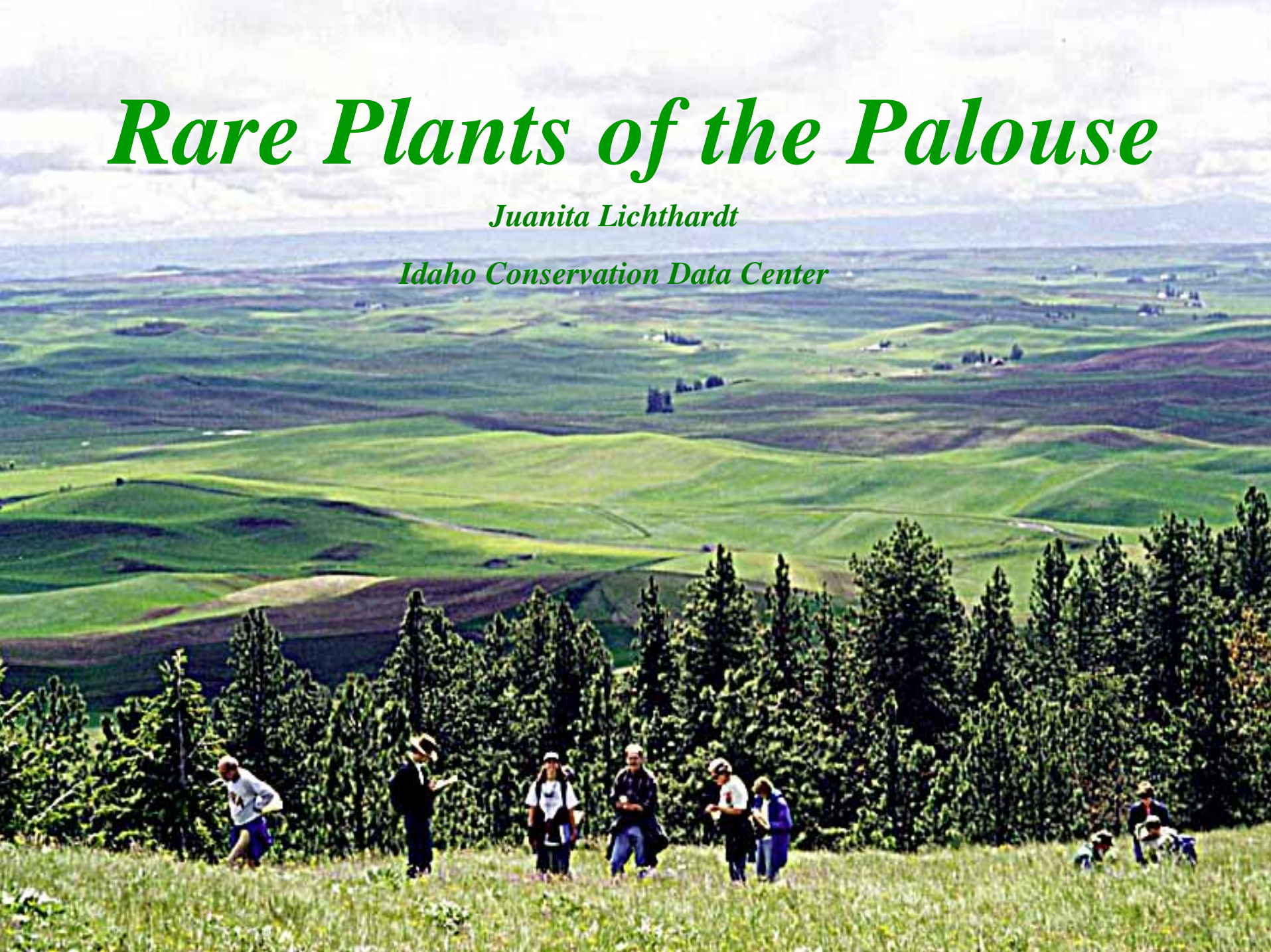


# *Rare Plants of the Palouse*

*Juanita Lichthardt*

*Idaho Conservation Data Center*





Spalding's catchfly



Palouse thistle



Palouse milkvetch



Broad-fruit mariposa lily



Jessica's aster



*Trifolium plumosum*



Palouse goldenweed



Greenband Mariposa, photo by Dennis Newman, IDFG



Leiberg's Tauschia, scan by Heekin



Water Howellia

List of plants could be expanded if we added the Canyon grasslands of the Snake and Clearwater Rivers, or the scablands of eastern Washington



So-called “Palouse endemics” vary greatly in their ties to the Palouse, so they will be discussed here in order from least to most restricted to the Palouse Ecoregion.

Protect remnants  
Restore degraded  
remnants  
Create habitat?

*Silene spaldingii*  
Spalding's catchfly

**Threatened**  
**G2/S1**  
**S2 (WA)**

**>100 records in**  
**four states**

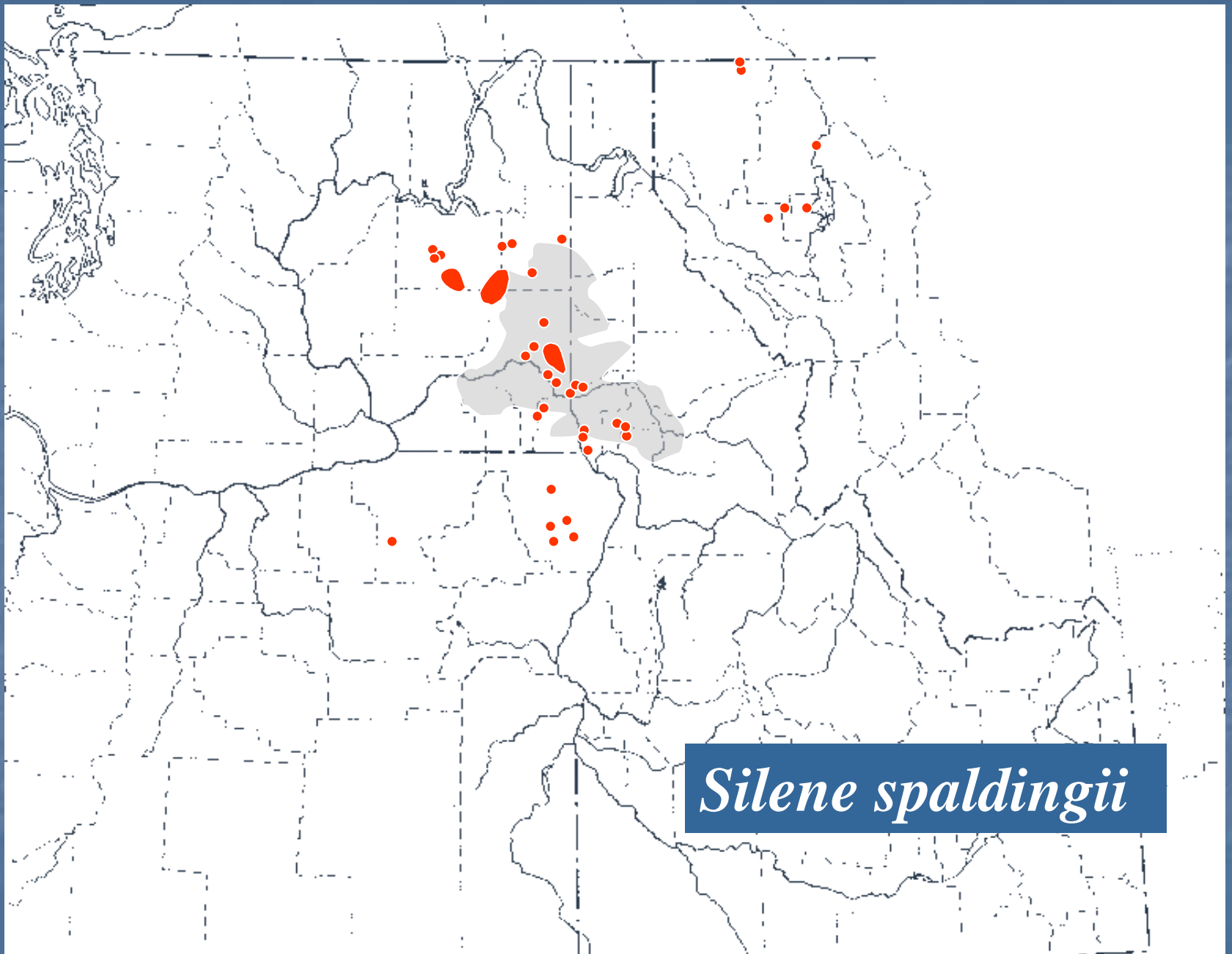
**Palouse &**  
**Canyon**  
**Grasslands**







Spalding's Catchfly, photo by Trish Heekin



*Silene spaldingii*



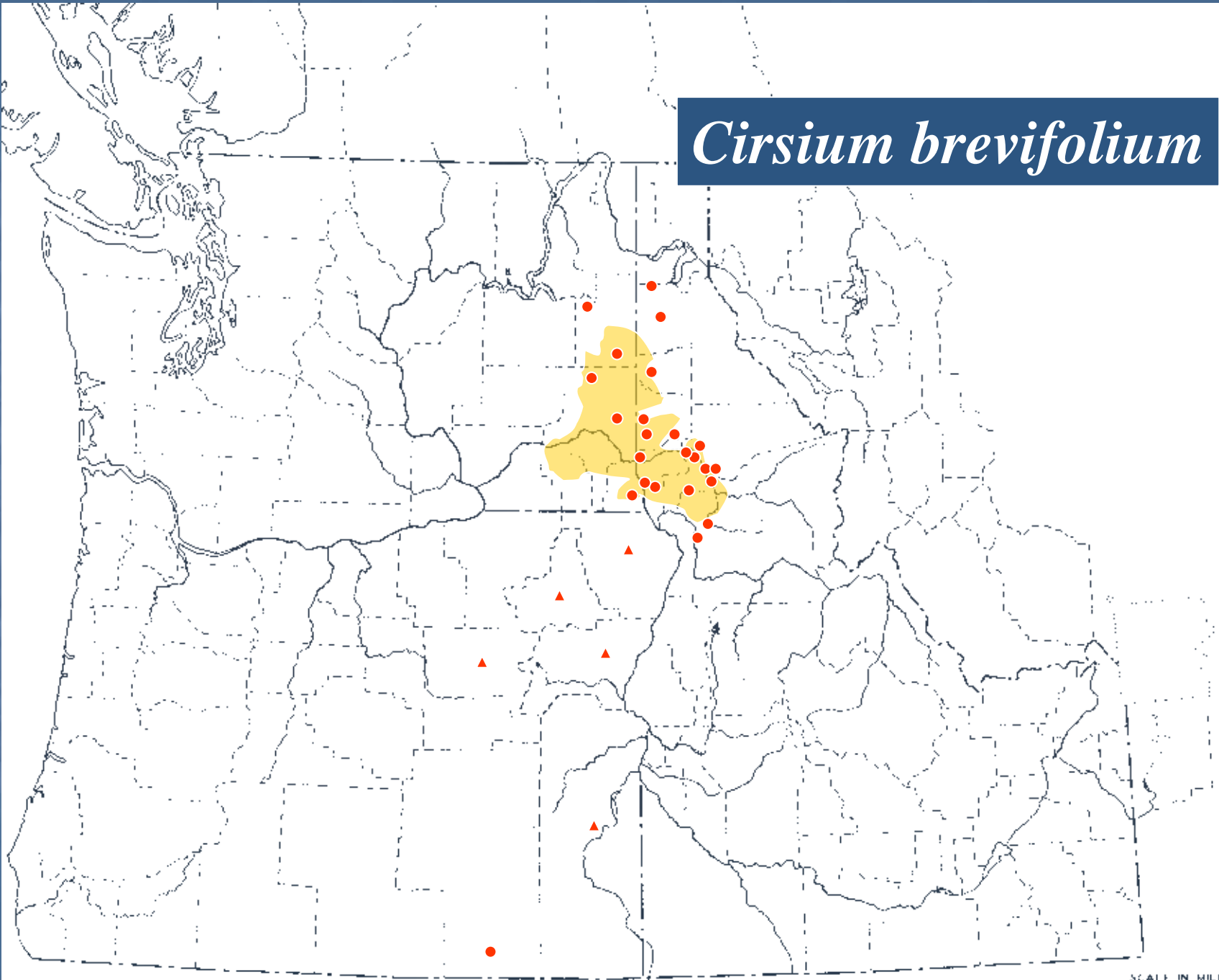
*Cirsium brevifolium*  
**Palouse thistle**

**G3/S2**

**Not tracked in OR & WA  
Grassland snowberry &  
Dry forests**

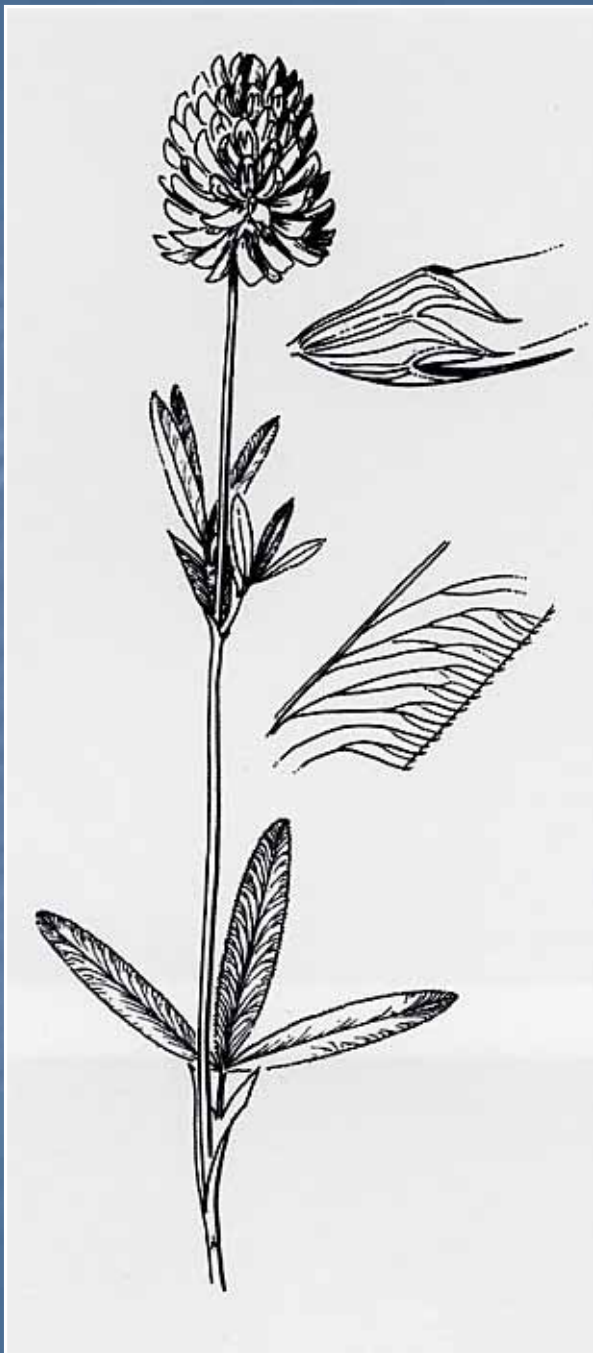
*Dave Skinner photo*

*Cirsium brevifolium*





Palouse Thistle, photo by Trish Heekin



*Trifolium douglasii*  
Douglas' clover

G3G4/S2

S1? (WA)

27 EORs (3 states)

Streamside meadows



Photo by  
Karl Urban

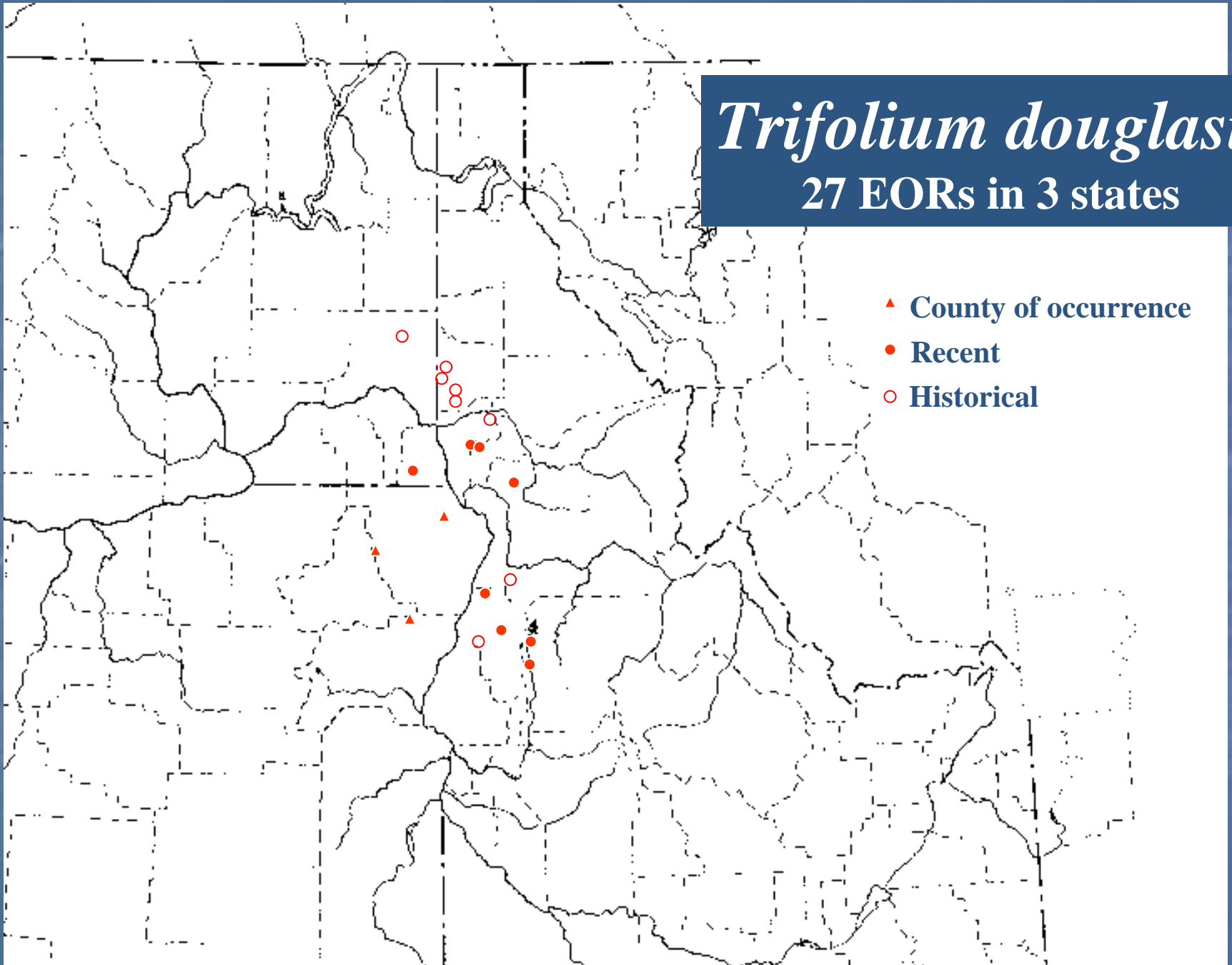


Photo by  
Karl Urban

# *Trifolium douglasii*

27 EORs in 3 states

- ▲ County of occurrence
- Recent
- Historical







*Astragalus arrectus*  
**Palouse milkvetch**

**G2G3/S2 (WA)**  
**Not tracked in Idaho**

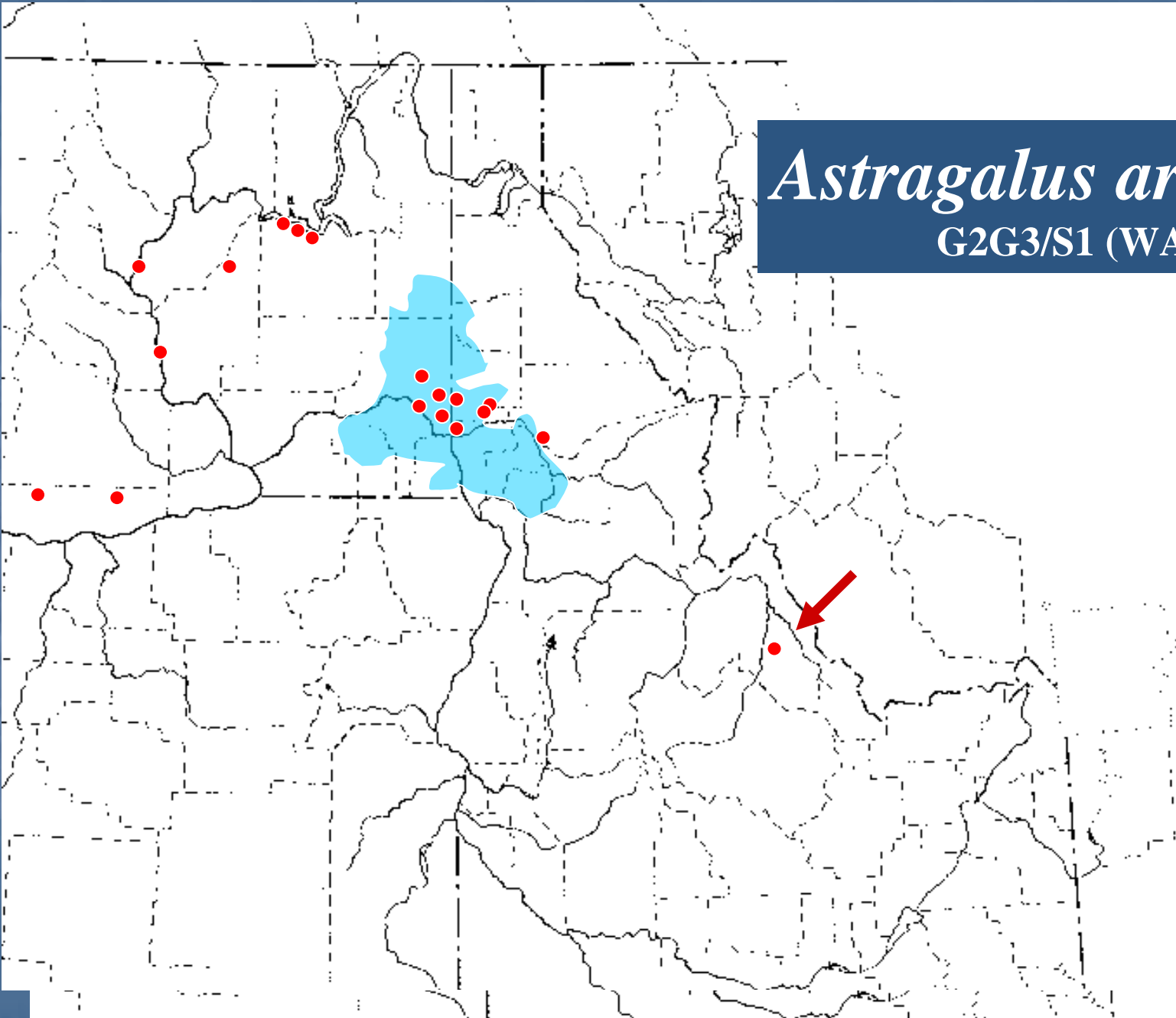
**Grassland &  
shrubland**

*Dave Skinner photo*



Palouse Milkvetch, Smoot Hill, photo by Trish Heekin

*Astragalus arrectus*  
G2G3/S1 (WA)





*Calochortus nitidus*  
**Broad-fruit mariposa lily**

**G3/S3**

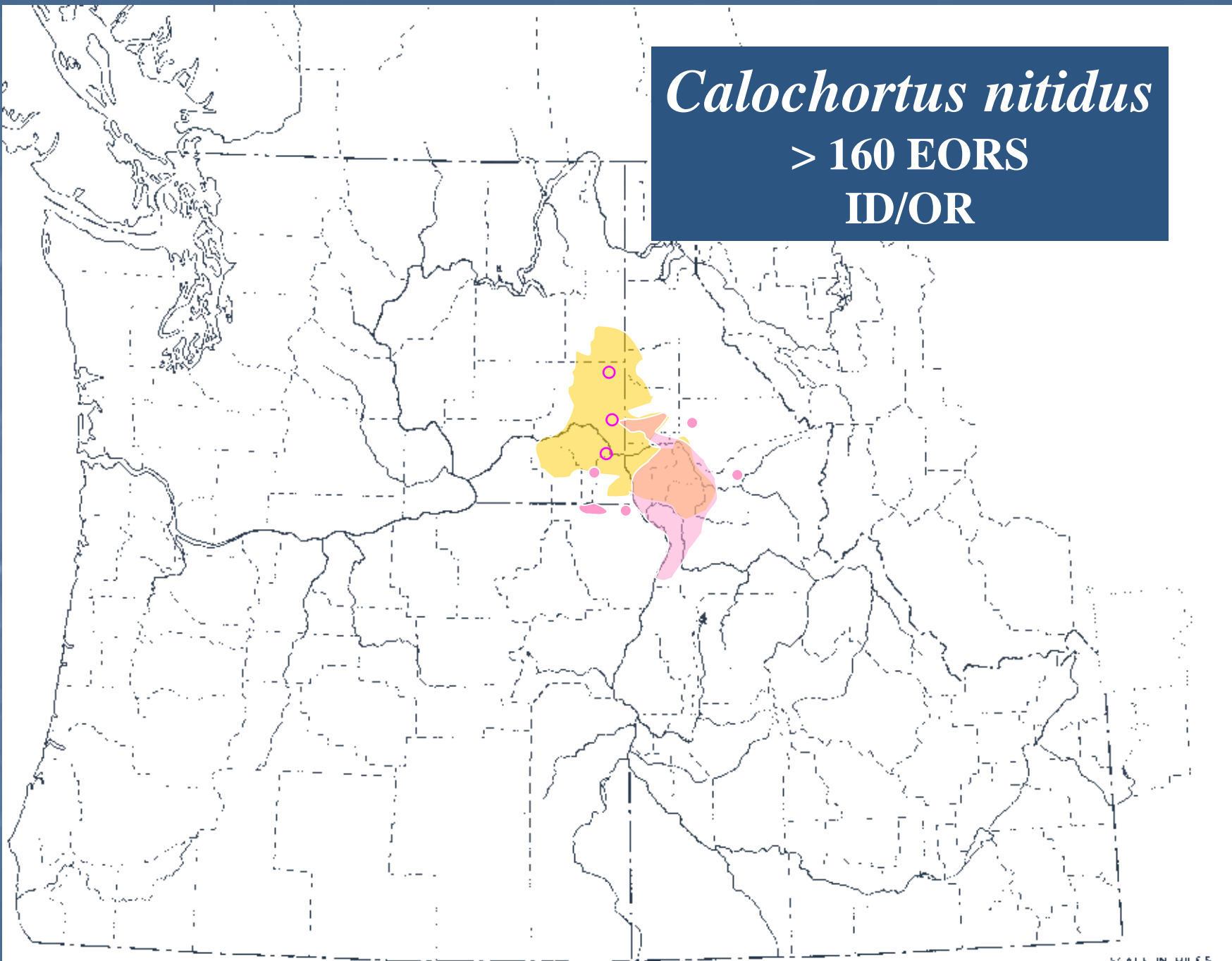
**S1 (WA) Palouse Grassland/  
Canyon Grassland/  
Forest openings**



Broadfruit Mariposa, photos by Trish Heekin (left) and Gerry Queener (right)

*Calochortus nitidus*

> 160 EORS  
ID/OR





*Trifolium plumosum*  
*var. amplifolium*

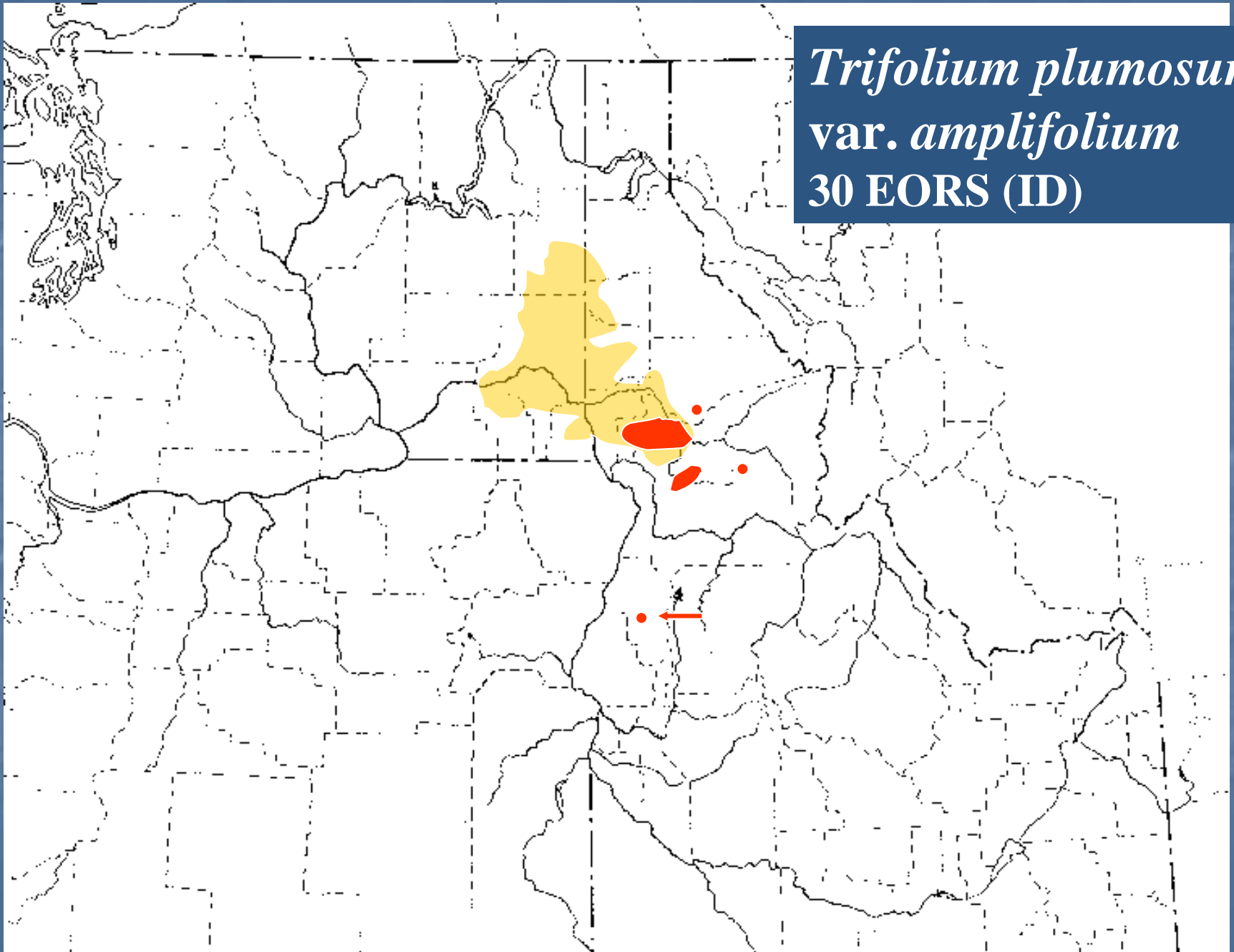
**Idaho endemic**

**T2/S2**

**30 EORs (ID)**

**Grassland**

*Trifolium plumosum*  
var. *amplifolium*  
30 EORS (ID)





*Haplopappus liatriformis*  
Palouse goldenweed

G2/S2

S2 (WA)

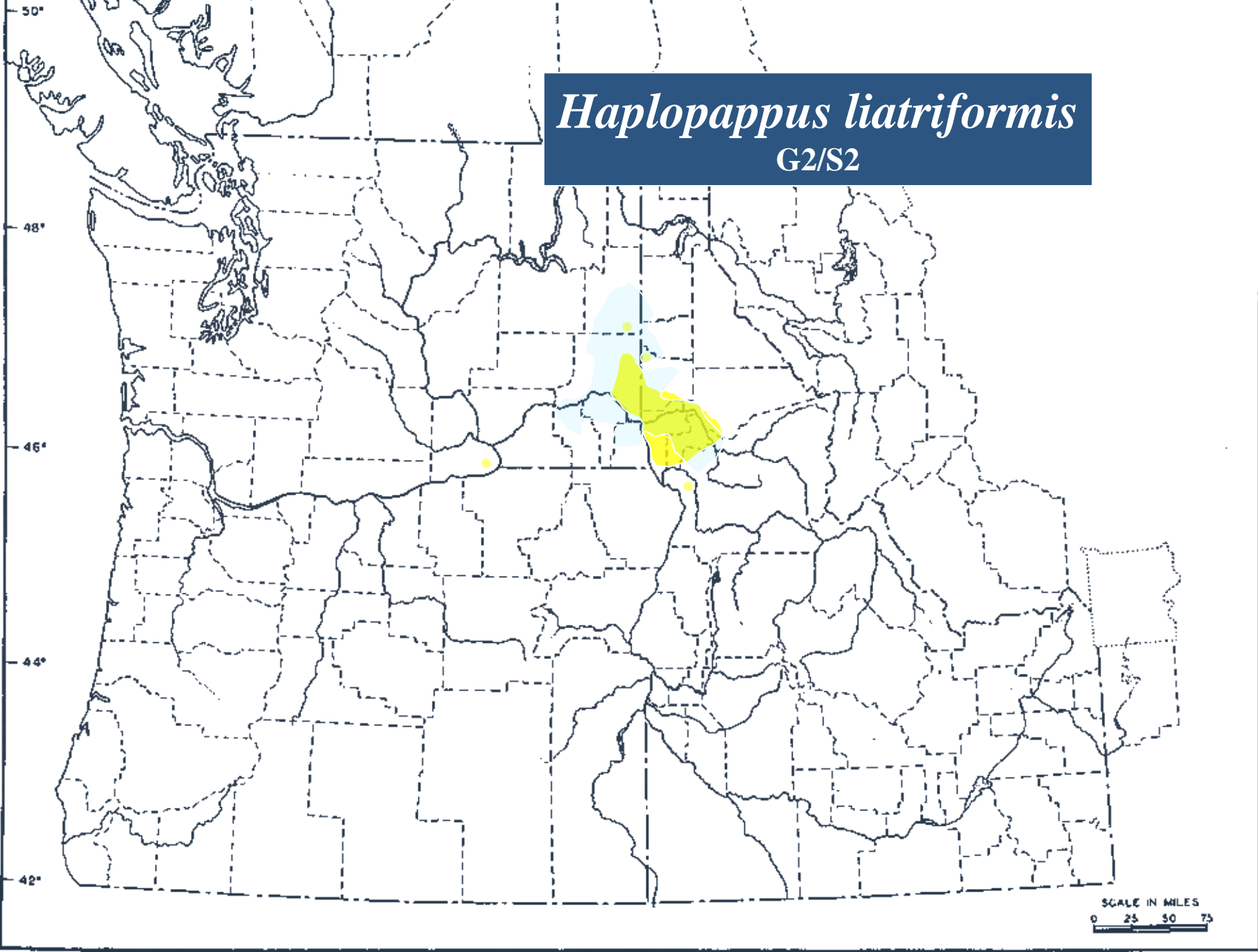
Palouse and Canyon  
Grasslands





Palouse Goldenweed, photos by Trish Heekin

*Haplopappus liatriformis*  
G2/S2



SCALE IN MILES  
0 25 50 75



*Aster jessicae*  
Jessica's aster

USFWS SOC

G2/S2

WA: S2

77 EORs (2 states)

Palouse woodlands

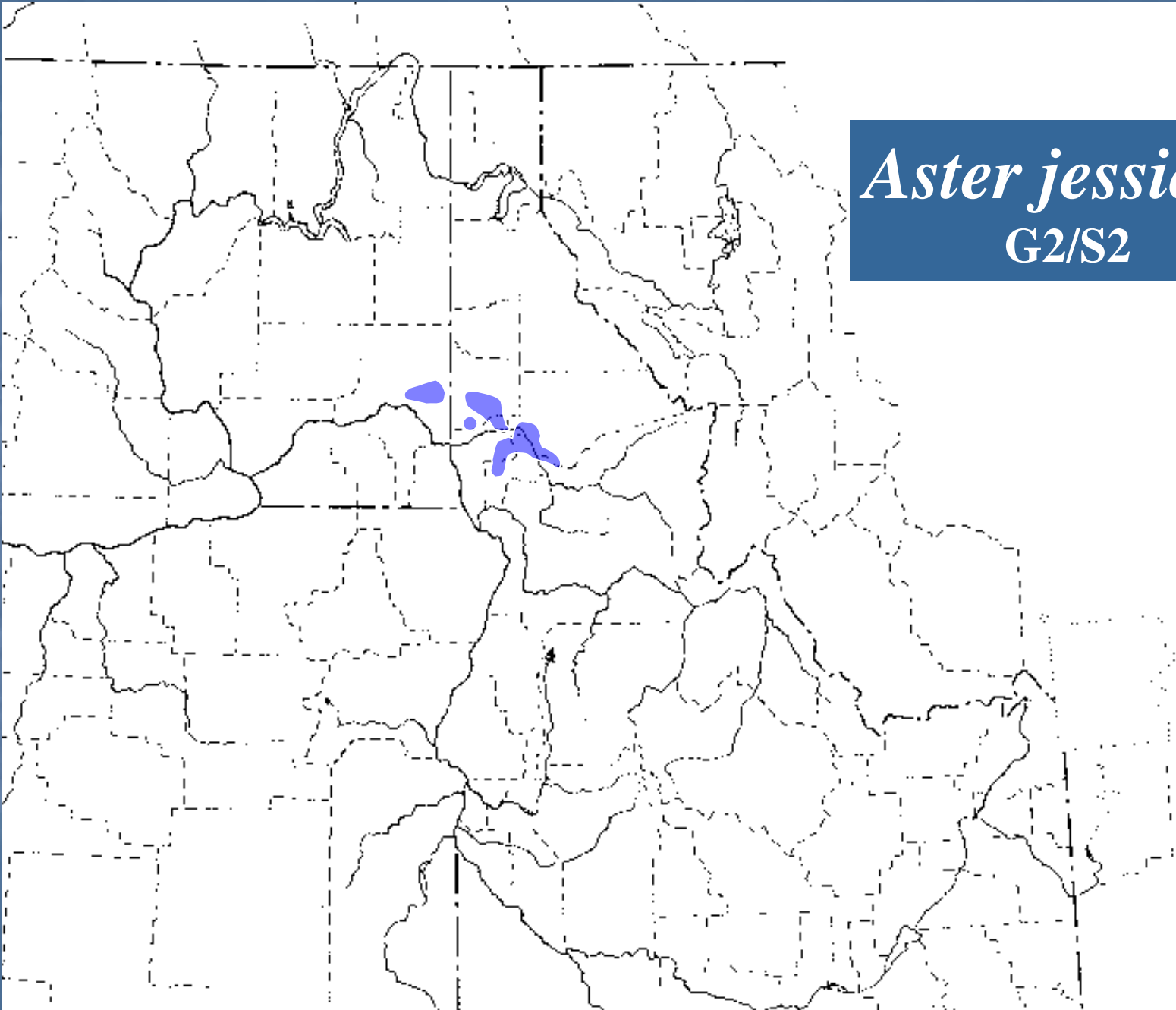


Jessica's Aster, photos by Trish Heekin



Jessica's Aster habitat

*Aster jessicae*  
G2/S2





Communities rare as well  
-- Bluebunch  
wheatgrass/Sandberg's  
bluegrass to the west  
Idaho fescue/snowberry  
Ranked G1 by Heritage  
network  
Daubenmires' meadow  
steppe  
Photo by Trish Heekin  
(Paradise Ridge)





- Protect what we have left
- Restore/expand degraded remnants
- Create habitat and populations