



AUSTRALIA FORUM

CANBERRA, AUSTRALIA

REFERENCE DESIGN INFORMATION KIT | 9 OCTOBER 2015

INTRODUCTION

The Reference Design for the Australia Forum, a new world-class convention centre and meeting place in Canberra, builds on the 2011 Australia Forum Scoping Study*

Australia Forum will cater for major local, national and international events, and in turn enhance visitation, tourism and local industry development in the ACT.

A significant site, adjacent to City Hill is earmarked as the location for Australia Forum. The site of Australia Forum was selected as part of the City to the Lake plan which is now embedded within the City Plan.

The sector shaped site at the junction of Commonwealth and Constitution Avenues ties the Forum into the significant Parliamentary Triangle reflecting an interlinking of its significance to the nation and the city. The building will front onto Vernon Circle establishing a new engagement with this centre city park, and faces Canberra's "main street" London Circuit. At this highly significant location the Forum will be a major presence and will have a significant role in the remaking and development of the city centre, and the change in level from Vernon Circle to London Circuit allows for a "split level" internal plan and enlarged public realm.

The Reference Design has been guided by a functional and operational brief which calls for:

- An 'iconic' design that corresponds with the quality of the National Capital's other major national institutions.
- Specialised security arrangements, design features and services required for Australia Forum to host international dignitaries.
- A 'Centre for Dialogue' to cater for important 'meetings in the round' for 180 delegates (e.g. high level government meetings as well as other specialised forums).
- High quality 'exhibition' areas and concourse with the multifunctional capacity to serve large scale government events, exhibitions, conferences and other functions.
- Outstanding multimedia services and other technologies to facilitate enhanced communication not only between delegates, conference organisers and presenters, but also to link Australia Forum with other event centres in Australia and overseas.

The Reference Design was prepared by Rome-based architect Massimiliano Fuksas in association with local architecture firm Guida Moseley Brown.

The design includes:

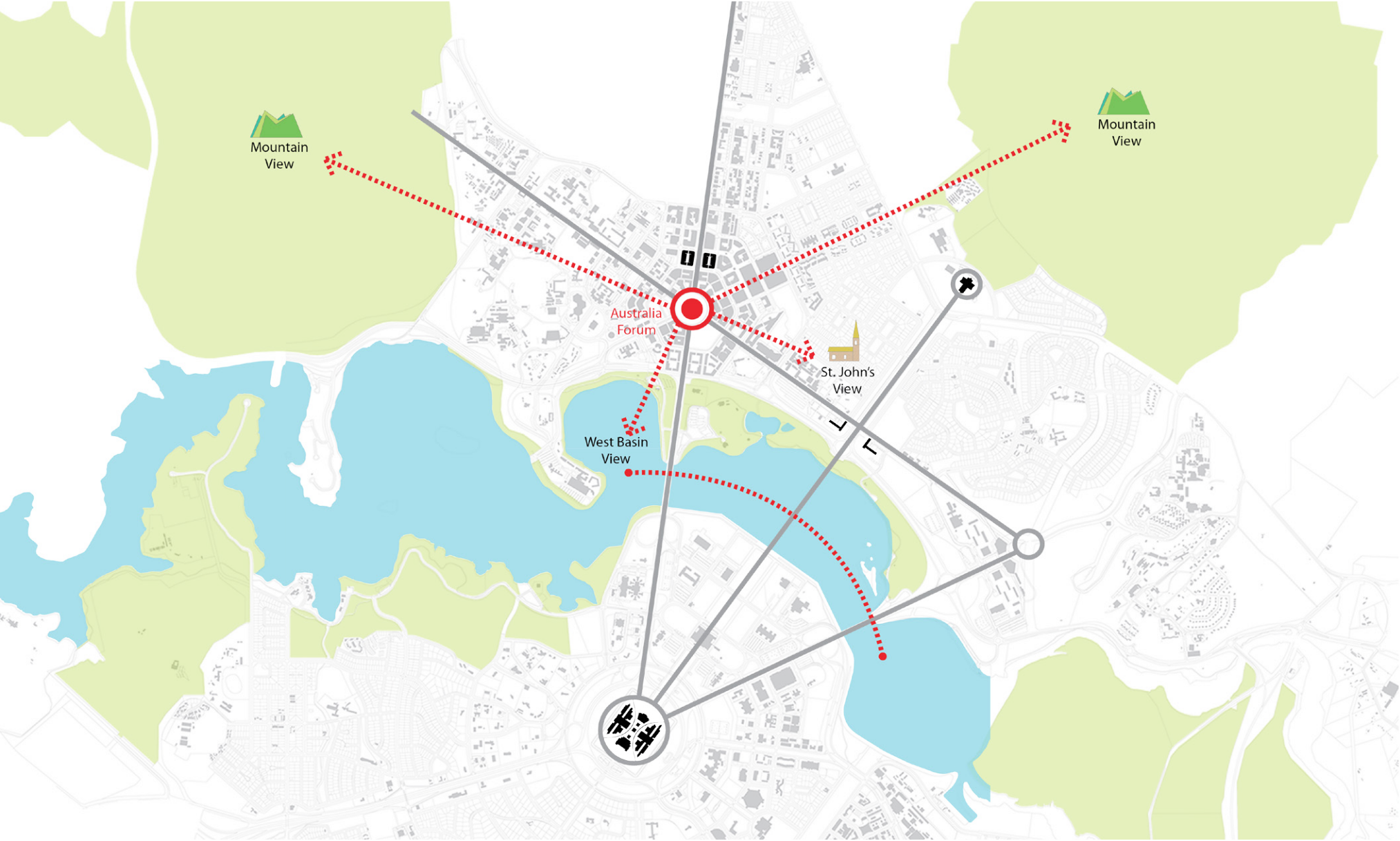
- 6030 square metres divisible Exhibition Hall
- Large continuous Exhibition Concourse
- Ten small divisible Meeting Rooms
- Ballroom of 2182 square metres seating 1800
- Plenary Hall with flexible seating and capacity to seat 2500
- The Centre for Dialogue

*managed by the Canberra Business Council and partly sponsored by the ACT Government and the Canberra Business Council.

AUSTRALIAFORUMSITE



DIRECT AND VISUAL CONNECTIONS TO THE CITY WITHIN THE GRIFFIN PLAN





The overall architectural form and concept for the Australia Forum is inspired by the confluence of Canberra's unique topography and the water's edge of Lake Burley Griffin. The sinuous curves of the profiles of the hills that are reflected in the waters of the lake have been a source of inspiration that link the building to place.

The building acts like an abstracted landscape, formed by the floor layers of various functions that are expressively distorted by the sculptural volume of the Plenary hall, and connected to the tower of the Centre of Dialogue in an overall continuity of form and material.

The design team sought a solution that provides a conference centre which through its openness and permeability is able to activate the cultural, social and economic public life of its surroundings. To this end opaque walls and vertical enclosures are minimized, while great emphasis is given to the open foyers, terraces and cantilevered balconies.

The sinuous shape of the roof is the key unifying formal element of the design, followed closely by the sculptural amphitheatre which activates the Forum plaza at Vernon Circle, and engages with the topography and landscape of City Hill.

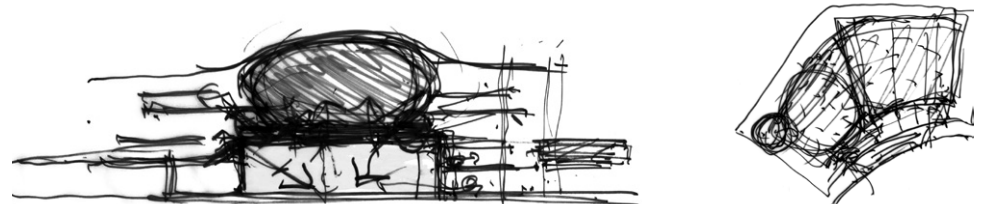
This collective quality of the Forum Plaza and Amphitheatre relates closely to the adjacent City Hill, inviting pedestrians to access the upper terraces, while creating a dynamic public space enjoyed by all and with controlled access into the building.

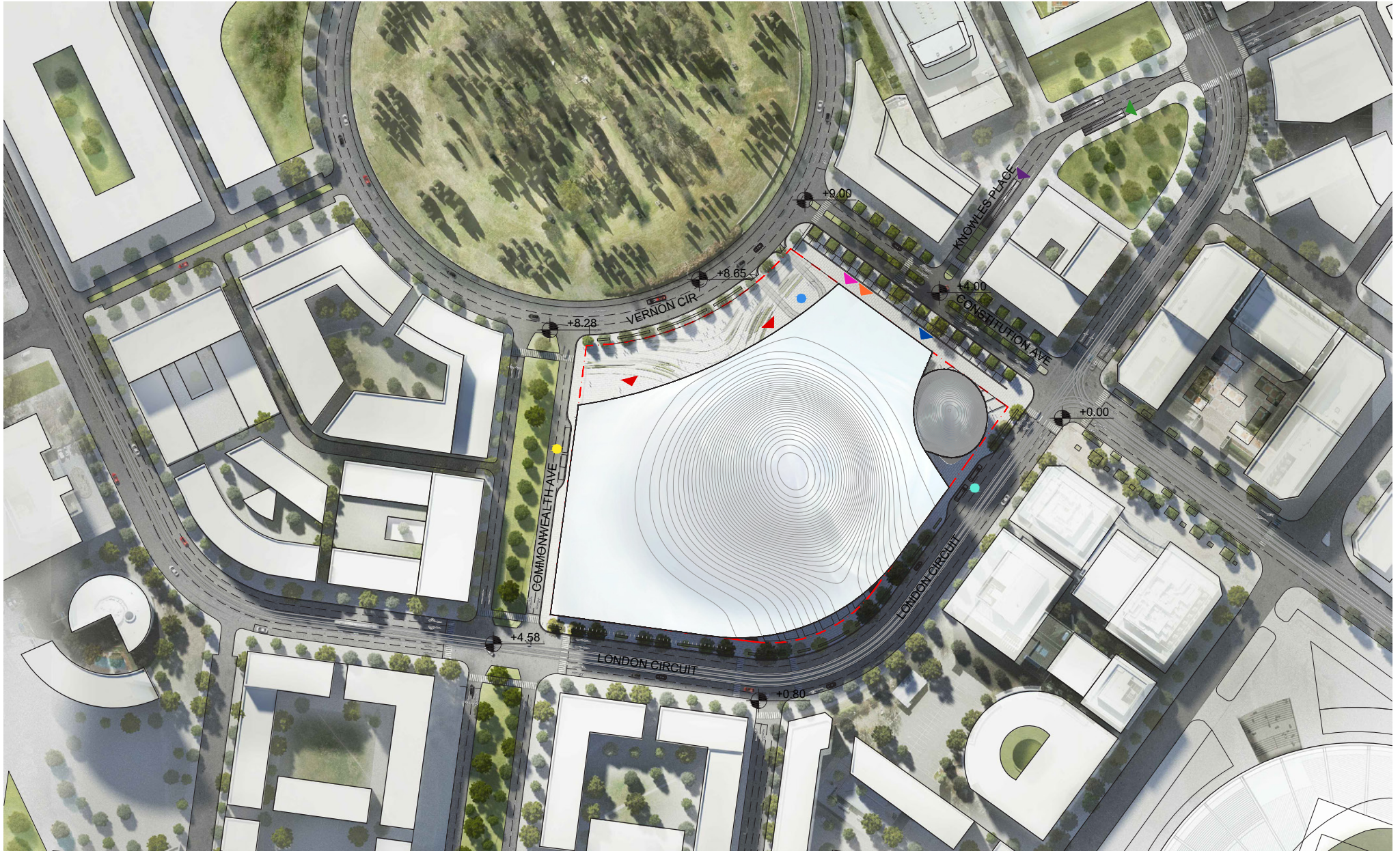
Particular attention has been given to the relationship of the building within the context, both the present sitewide conditions as well as the proposed urban developments, including the light rail, the proposed regrading of London Circuit and the new extension and completion of Constitution Ave. In considering the impact of these infrastructure changes the Australia Forum design responds by seeking to create public spaces that maximise the activation and enjoyment of the public realm, including the changing ground level and terraces above. This urban environment is enhanced by the introduction of carefully designed street furniture, water features, green zones and perimeter trees; arranged to create an open and seamless relationship between interior and exterior, allowing visitors direct access into the building.

Once inside the Main Entry, the visitor has quick access to the centrally located information desks and reception, and a series of grand stairways, elevators and escalators that divide and direct the pedestrian flows according to the building's various functions.

A glazed wall to the east and west wings of the Entry Foyer provides direct views into the Exhibition Hall below, allowing visitors to navigate and position themselves easily within the building. In close connection with the entrance and located a level above is the inner square & amphitheatre space to the Forum, above the Exhibition roof. This space runs from the north to south of the building leading directly to the Plenary foyer, alongside the meeting rooms and allows descent to the Exhibition Concourse facing London Circuit. This interior square also has the potential to be accessed directly from the exterior boulevard along London Circuit.

The inner square is a multipurpose space that can assist in collecting and separating visitor movement flows, or alternatively operate in a manner dedicated for individual events.









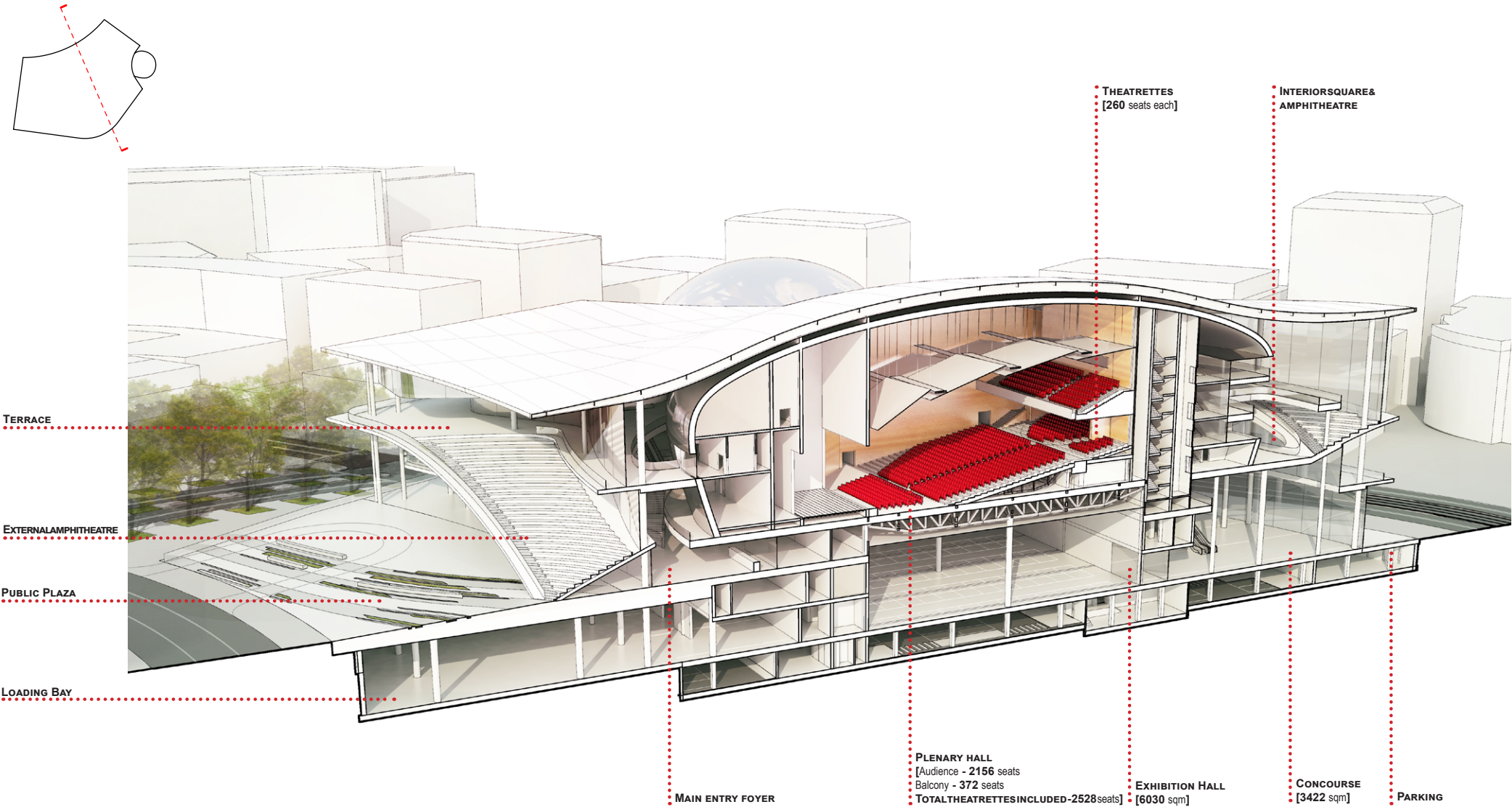
NIGHT TIME BIRD'S EYE VIEW OF VERNON CIRCLE



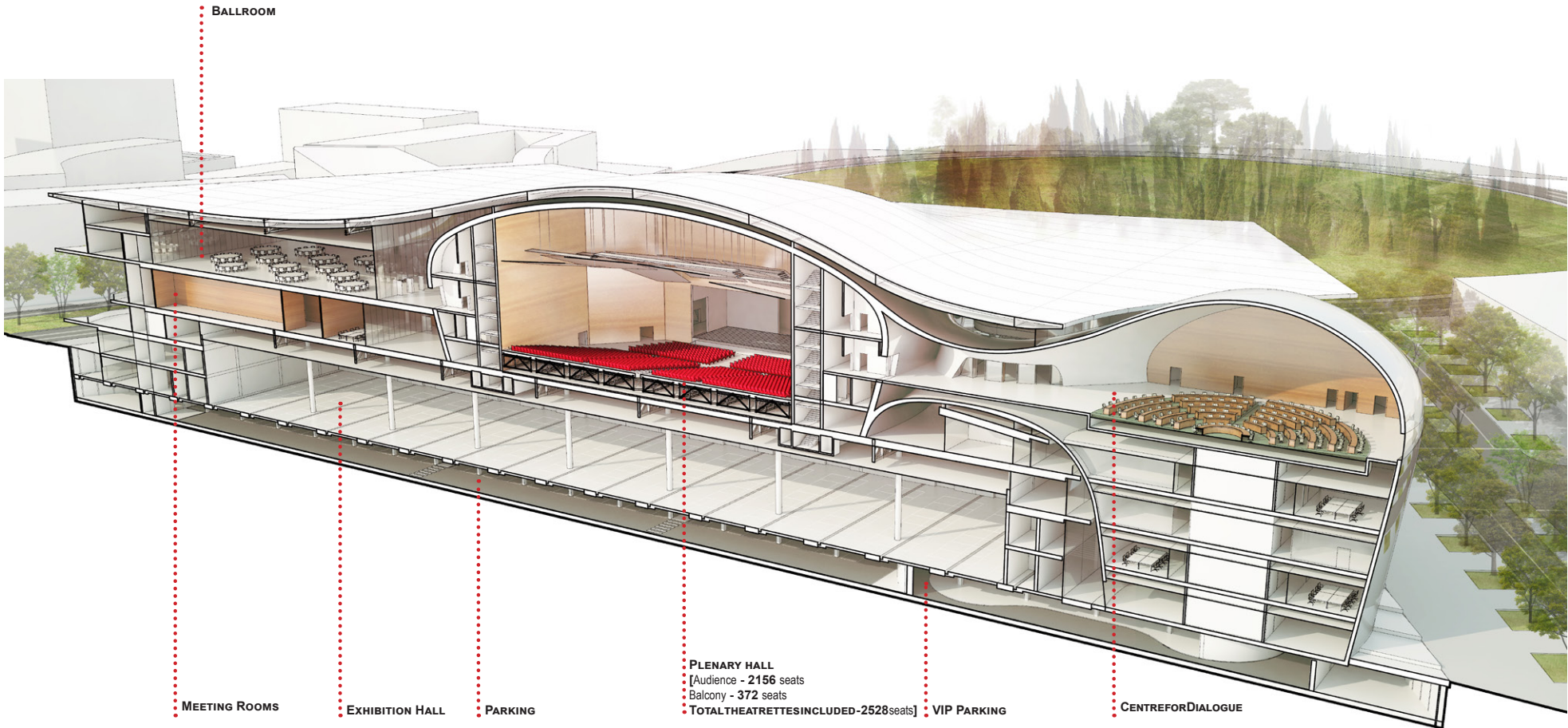
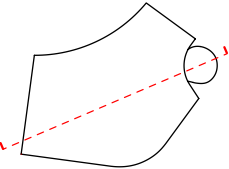




TRANSVERSAL PERSPECTIVE SECTION



LONGITUDINAL PERSPECTIVE SECTION





ARCHITECTS |

FUKSAS

Fuksas Architecture srl

Piazza del Monte di Pietà,
30 - 00186 Roma
Tel +39-0668807871
Fax +39-0668807872
office@fuksas.com

85, rue du Temple
F-75003 Paris
Tel +33-144618383
Fax +33-144618389
secretariat@fuksas.com

No. 302 Building B-3 , Eastern Industrial Park
OCT LOFT, Xiangshan East Street,
518053 Nanshan District, Shenzhen
Tel + 86-75529910136 Fax +86-75529591652
secretary@fuksas.org



Guida Moseley Brown Architects

Unit 10, 285 Canberra Avenue
Fyshwick ACT 2609 Australia
(T) + 61 2 6280 7080
(F) + 61 2 6280 7090
(E) John.Guida@gmbarchitects.com
(W) www.gmbarchitects.com

CONSULTANTS |

ARUP

Level 10, 201 Kent Street, Sydney 2000
NSW, Australia
t +61 (02) 9320 9320 d +61 (02) 9320
9678
f +61 (02) 9320 9321
www.arup.com



Level 10, 201 Kent Street, Sydney 2000
NSW, Australia
t +61 (02) 9320 9320 d +61 (02) 9320
9678
f +61 (02) 9320 9321
www.arup.com



MELBOURNE

T: +61 3 9502 0655
M: +61 419 561 635
F: +61 3 9502 0427
30A Eliza Street - Black Rock, VIC 3193 AUSTRALIA