



South West Region - Parks & Wildlife and FPC Disturbance Operations Flora and Vegetation Survey Assessment Form

1. Proposed Operations: (to be completed by proponent)

NBX0217

Summary of Proposed Operation: Road Construction and Timber Harvesting

New road construction – 3.75km
Existing road upgrade – 14.9km
New gravel pit construction – 2ha (exploration area)

Contact Person and Contact Details:

Adam Powell
adam.powell@fpc.wa.gov.au
0427 191 332

Area of impact; District/Region, State Forest Block, Coupe/Compartment (shapefile to be provided):

Blackwood District
South West Region
Barrabup 0317

Period of proposed disturbance:

November 2016 to December 2017

2.Desktop Assessment: (to be completed by the Region)

- Check Forest Ecosystem reservation.

Forest Ecosystems proposed for impact:

Jarrah Forest-Blackwood Plateau, Shrub, herb and sedgeland, Darling Scarp

Y Are activities in a Forest Ecosystem that triggers informal reservation under the FMP?

The Darling Scarp Forest Ecosystem is a Poorly Reserved Forest Ecosystem and needs to be protected as an Informal Reserve under the Forest Management Plan (Appendix 11)

- Check Vegetation Complexes, extents remaining uncleared and in reservation (DEC 2007/EPA 2006).

Vegetation Complex	Pre-European extent (%)	Pre-European extent (Ha)	Extent in formal/informal reservation (%)
Bidella (BD)	94%	44,898	47%
Darling Scarp (DS)	Figures not available	Corresponds to Darling	Scarp Forest Ecosystem extent
Gale (GA)	80%	899	17%
Jalbarragup (JL)	91%	14,786	32%
Kingia (KI)	96%	97,735	34%
Telerah (TL)	92%	25,548	33%
Wishart (WS2)	84%	2,796	35%

Y Do any complexes trigger informal reservation under the FMP? Darling Scarp complex as discussed above

Y Are any complexes significant as per EPA regionally significant vegetation? Gale (GA) complex is cleared below the recommended retention of 1,500ha (Molloy et.al 2007)

- Check Threatened flora and TEC/PEC databases over an appropriate radius of the disturbance boundary.

TAXON/TEC/PEC	STATUS	HABITAT NOTES (if relevant)	Spring survey dependent
<i>Caladenia uliginosa ssp. patulens</i>	P1	Undefined	Y
<i>Andersonia barbata</i>	P2	Grey sand soils	Y
<i>Carex tereticaulis</i>	P3	Riverine	N
<i>Synaphea otio stigma</i>	P3	Undefined	Y
<i>Acacia semitrullata</i>	P4	Grey sand soils	N
<i>Aponogeton hexatepalus</i>	P4	Claypan wetlands	Y
<i>Pultenaea skinneri</i>	P4	Grey sand soils	N

Regional Officer Recommendation in regards to likelihood of conservation value impact and flora survey requirements (reference other datasets as required):

A spring flora survey is required, while it should record all species present the surveyors need to be particularly aware of *Caladenia uliginosa ssp. patulens* which is known to occur within the harvest coupe. Any survey has to be undertaken when the *Caladenia* is flowering which in this particular area appears to be in late October. It is recommended that the known population in the coupe is monitored and surveys are undertaken when this population is flowering.

Given they should be protected as informal reserves new clearing for roads and gravel pits needs to be excluded from the Darling Scarp vegetation complex and its associated forest ecosystem.

It is recommended that no permanent clearings (ie: roads & gravel pits) are constructed within the extent of the Gale (GA) vegetation complex.

Name: Andrew Webb

Signature: A.Webb

Date: 22/9/2016

3. Flora Survey Details: (to be completed by botanist)

Survey undertaken by: Russell Smith

Date : 7/11/2016

Survey Specifications: 40m each side of internal road alignments
10m each side of external road alignments
Gravel pit/s as mapped

Attach Survey Area Map:

Provide maps of survey area. Plant community extents to be demarcated on maps as are locations of listed and significant flora.

Results of search

- Provide a brief description of plant communities of the survey area and detail those which are TEC/PEC's or would be considered locally significant and/or likely to provide refugial habitat (Table 1). If flora survey has been undertaken outside of the spring flowering provide comment as to any plant communities that may provide potential habitat for Threatened flora.

- Provide a complete list of all observed flora within the surveyed areas (Table 3), highlighting Threatened and Significant flora in Table 2. Indicate on the species list flora that are restricted to specific plant communities.

Table 1: Plant Communities of survey area,

Community No.	Community Description	Local context
A	Jarrah-Marri open forest with <i>Allocasuarina fraseriana</i> over <i>Banksia grandis</i> and <i>Persoonia longifolia</i>	Laterite (widespread)
B	Jarrah-Marri open forest with <i>Allocasuarina fraseriana</i> over <i>Anarthria scabra</i> , <i>Melaleuca thymoides</i> and <i>Podocarpus drouynianus</i>	Yellow-brown or yellow-grey sandy loams (widespread)
C	Jarrah-Marri woodland with tall shrubland of <i>Acacia urophylla</i> , <i>Mirbelia dilatata</i> , <i>Taxandria linearifolia</i> and <i>Trymalium odoratissimum</i> (red-brown loam)	Creeklines (localized)

Comments in regards to Plant Communities:

All the plant communities within the coupe appear to be typical of types that are widespread regionally.

Table 2: Threatened and/or Significant flora of the survey area,

Species	Status	Location	Operational Impact
<i>Synaphea hians</i>	P3	Along central track from 384593.3 E, 6245943.5 N to 384675.3 E, 6245892.1 N. About 100 plants.	Potentially 10-15 plants could be taken during upgraded of the road.
<i>Synaphea hians</i>	P3	On Old Cundinup Road abt 470 m S of Ref Tree GC 48/2 (386322.7 E, 6246269.2 N)	One plant 0.5 m from edge of road.

Comments in regards to Flora:

Synaphea hians (P3) is found along about 100 m of the central track near its junction with Cundinup Road. The plants are located on both sides of the track, with some at the edge of the running surface. The

Synaphea could potentially be avoided by deviating the track to the east or west by 15-20 m. The *Synaphea hians* plant on Old Cundinup Road is also potentially at risk from road widening, though the risk is lower.

Proponent/Botanist management recommendations:

Management recommendations of the proponent/botanist in regards to vegetation and/or flora of significance located by the surveys:

Synaphea hians (P3) is found throughout the northern part of the Blackwood Plateau and as far east as Collie in scattered populations. Although the loss of 12-15 plants by upgrading of the track is unlikely to significantly impact the conservation status of the species – it could potentially be avoided by deviating the track to the east or west by 15-20 m.

4. Parks & Wildlife Regional Manager or Delegate Authorisation:

Comments:

Section of coupe excluded in south east based on recommendation of flora officer.

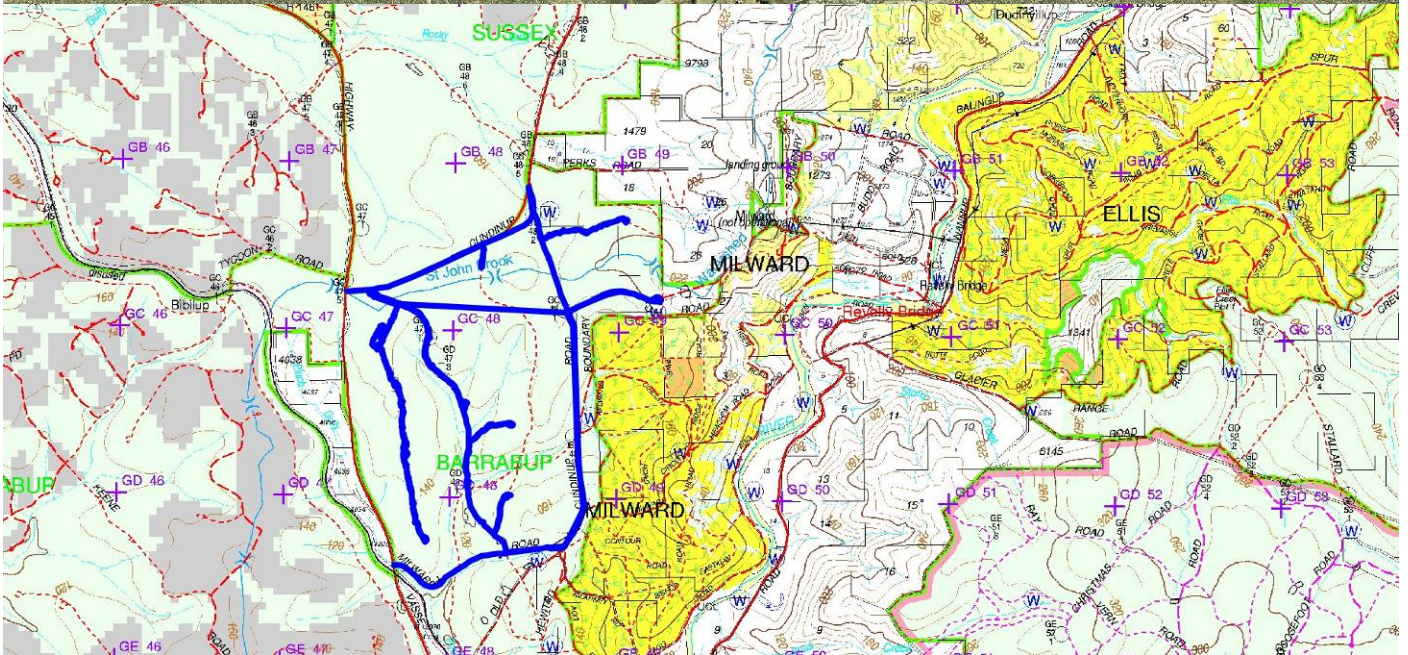
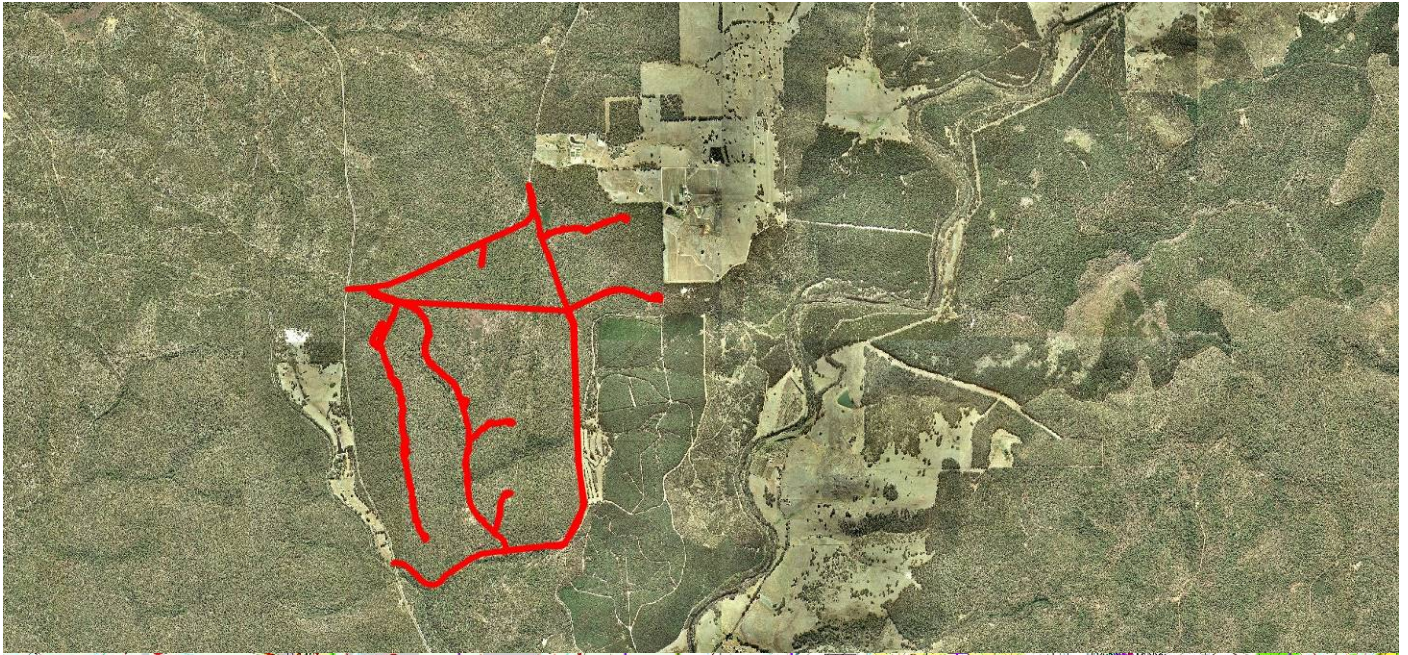
Authorized by: Tony Mennen

Signed: 

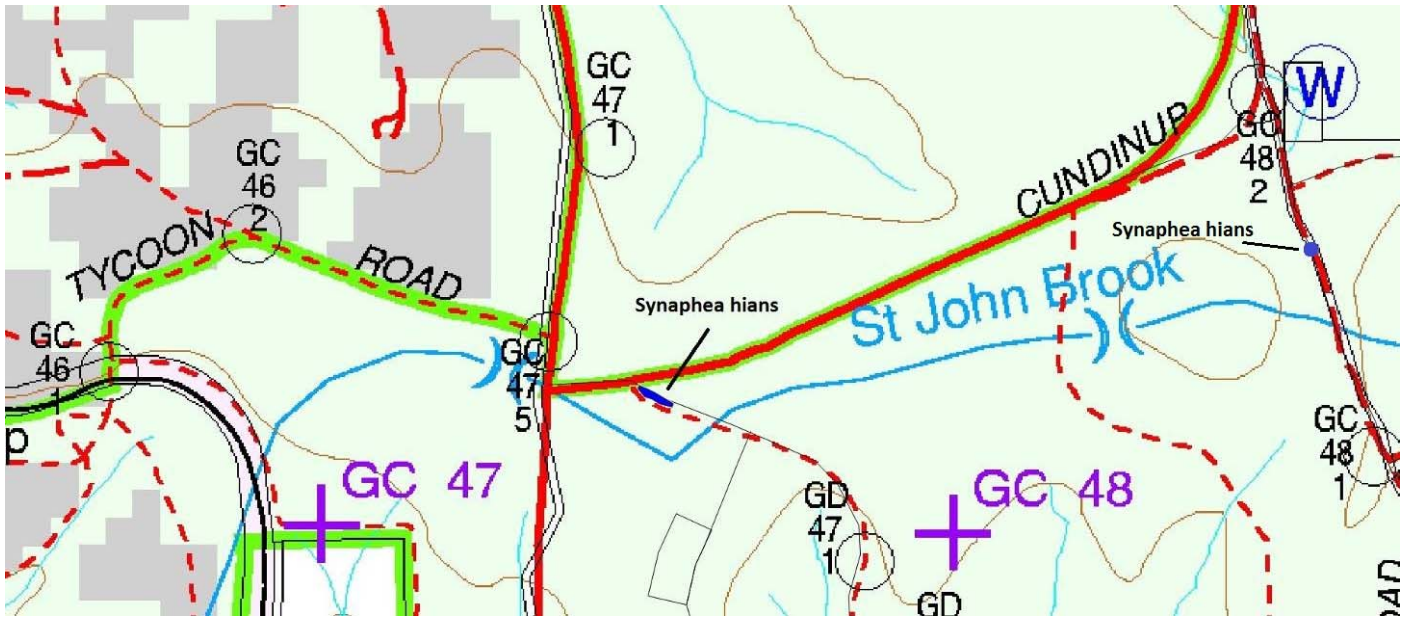
Date: 30/04/2017

This authorisation is valid 24 months from the date of approval and will require Parks & Wildlife recheck after this time.

Appendix 1: Maps of flora surveys and locations



Location of rare flora survey in Barrabup 0117 completed on the 7/11/2016



Location of *Synaphea hians* populations.

Appendix 2: Photos of relevant flora



Photo of *Synaphea hians* (top) and “central” track along which it is located (bottom).

Appendix 3: Survey Area Species list: species mainly confined to one or other of the communities are noted in the third column.

FAMILY_NAME	LATIN NAME	NATURALISED	CONSV_CODE
Anarthriaceae	<i>Anarthria prolifera</i>		
Anarthriaceae	<i>Anarthria scabra</i>		
Anarthriaceae	<i>Lyginia imberbis</i>		
Apiaceae	<i>Daucus glochidiatus</i>		
Apiaceae	<i>Pentapeltis peltigera</i>		
Apiaceae	<i>Platysace filiformis</i>		
Apiaceae	<i>Platysace tenuissima</i>		
Apiaceae	<i>Xanthosia candida</i>		
Apiaceae	<i>Xanthosia huegelii</i>		
Asparagaceae	<i>Lomandra hermaphrodita</i>		
Asparagaceae	<i>Lomandra purpurea</i>		
Asparagaceae	<i>Lomandra sericea</i>		
Asparagaceae	<i>Sowerbaea laxiflora</i>		
Asparagaceae	<i>Thysanotus manglesianus</i>		
Asteraceae	<i>Craspedia variabilis</i>		
Asteraceae	<i>Hyalosperma cotula</i>		
Asteraceae	<i>Hypochaeris glabra</i>	*	
Asteraceae	<i>Lagenophora huegelii</i>		
Asteraceae	<i>Millotia tenuifolia</i>		
Asteraceae	<i>Rhodanthe citrina</i>		
Asteraceae	<i>Senecio quadridentatus</i>		
Asteraceae	<i>Siloxerus filifolius</i>		
Asteraceae	<i>Trichocline spathulata</i>		
Campanulaceae	<i>Isotoma hypocrateriformis</i>		
Casuarinaceae	<i>Allocasuarina fraseriana</i>		
Colchicaceae	<i>Burchardia congesta</i>		
Cyperaceae	<i>Cyathochaeta avenacea</i>		
Cyperaceae	<i>Gahnia decomposita</i>		
Cyperaceae	<i>Lepidosperma leptostachyum</i>		
Cyperaceae	<i>Lepidosperma squamatum</i>		
Cyperaceae	<i>Tetraria</i> sp. Jarrah Forest (R. Davis 7391)		
Dasyopogonaceae	<i>Dasyopogon bromeliifolius</i>		
Dasyopogonaceae	<i>Kingia australis</i>		
Dennstaedtiaceae	<i>Pteridium esculentum</i>		
Dilleniaceae	<i>Hibbertia hypericoides</i>		
Droseraceae	<i>Drosera menziesii</i> subsp. <i>penicillaris</i>		
Droseraceae	<i>Drosera pallida</i>		
Elaeocarpaceae	<i>Tremandra diffusa</i>		
Ericaceae	<i>Andersonia caerulea</i>		
Ericaceae	<i>Astroloma ciliatum</i>		
Ericaceae	<i>Astroloma pallidum</i>		
Ericaceae	<i>Leucopogon australis</i>		
Ericaceae	<i>Leucopogon capitellatus</i>		
Ericaceae	<i>Leucopogon conostephioides</i>		
Ericaceae	<i>Leucopogon glabellus</i>		
Ericaceae	<i>Leucopogon microcarpus</i>		

FAMILY_NAME	LATIN NAME	NATURALISED	CONSV_CODE
Ericaceae	<i>Leucopogon pendulus</i>		
Ericaceae	<i>Sphenotoma capitata</i>		
Euphorbiaceae	<i>Monotaxis occidentalis</i>		
Fabaceae	<i>Acacia alata</i>		
Fabaceae	<i>Acacia applanata</i>		
Fabaceae	<i>Acacia browniana</i>		
Fabaceae	<i>Acacia extensa</i>		
Fabaceae	<i>Acacia obovata</i>		
Fabaceae	<i>Acacia pulchella</i>		
Fabaceae	<i>Acacia urophylla</i>		
Fabaceae	<i>Bossiaea linophylla</i>		
Fabaceae	<i>Bossiaea ornata</i>		
Fabaceae	<i>Callistachys lanceolata</i>		
Fabaceae	<i>Daviesia decurrens</i>		
Fabaceae	<i>Daviesia inflata</i>		
Fabaceae	<i>Gastrolobium bilobum</i>		
Fabaceae	<i>Gompholobium confertum</i>		
Fabaceae	<i>Gompholobium preissii</i>		
Fabaceae	<i>Jacksonia furcellata</i>		
Fabaceae	<i>Mirbelia dilatata</i>		
Goodeniaceae	<i>Dampiera alata</i>		
Goodeniaceae	<i>Lechenaultia biloba</i>		
Haemodoraceae	<i>Anigozanthos bicolor</i>		
Haemodoraceae	<i>Anigozanthos viridis</i>		
Hemerocallidaceae	<i>Agrostocrinum hirsutum</i>		
Hemerocallidaceae	<i>Caesia micrantha</i>		
Hemerocallidaceae	<i>Tricoryne elatior</i>		
Iridaceae	<i>Orthrosanthus laxus</i>		
Iridaceae	<i>Patersonia babianoides</i>		
Iridaceae	<i>Patersonia occidentalis</i>		
Loganiaceae	<i>Phyllangium paradoxum</i>		
Malvaceae	<i>Thomasia grandiflora</i>		
Myrtaceae	<i>Calothamnus planifolius</i>		
Myrtaceae	<i>Calytrix leschenaultii</i>		
Myrtaceae	<i>Corymbia calophylla</i>		
Myrtaceae	<i>Eucalyptus marginata</i>		
Myrtaceae	<i>Hypocalymma angustifolium</i>		
Myrtaceae	<i>Hypocalymma robustum</i>		
Myrtaceae	<i>Melaleuca thymoides</i>		
Myrtaceae	<i>Pericalymma ellipticum</i>		
Myrtaceae	<i>Taxandria linearifolia</i>		
Myrtaceae	<i>Taxandria parviceps</i>		
Orchidaceae	<i>Cryptostylis ovata</i>		
Orchidaceae	<i>Diuris amplissima</i>		
Orchidaceae	<i>Elythranthera brunonis</i>		
Orchidaceae	<i>Thelymitra crinita</i>		
Phyllanthaceae	<i>Phyllanthus calycinus</i>		
Poaceae	<i>Austrostipa semibarbata</i>		
Poaceae	<i>Briza maxima</i>	*	

FAMILY_NAME	LATIN NAME	NATURALISED	CONSV_CODE
Podocarpaceae	<i>Podocarpus drouynianus</i>		
Proteaceae	<i>Adenanthos meisneri</i>		
Proteaceae	<i>Banksia bipinnatifida</i>		
Proteaceae	<i>Banksia dallanneyi</i>		
Proteaceae	<i>Banksia sphaerocarpa</i>		
Proteaceae	<i>Conospermum capitatum</i>		
Proteaceae	<i>Grevillea quercifolia</i>		
Proteaceae	<i>Hakea amplexicaulis</i>		
Proteaceae	<i>Hakea lissocarpha</i>		
Proteaceae	<i>Isopogon sphaerocephalus</i>		
Proteaceae	<i>Persoonia longifolia</i>		
Proteaceae	<i>Synaphea hians</i>		3
Proteaceae	<i>Xylomelum occidentale</i>		
Ranunculaceae	<i>Clematis pubescens</i>		
Restionaceae	<i>Desmocladus fasciculatus</i>		
Restionaceae	<i>Hypolaena exsulca</i>		
Rhamnaceae	<i>Trymalium odoratissimum</i>		
Rosaceae	<i>Acaena echinata</i>		
Rubiaceae	<i>Opercularia apiciflora</i>		
Rutaceae	<i>Asterolasia squamuligera</i>		
Stylidiaceae	<i>Levenhookia pusilla</i>		
Stylidiaceae	<i>Stylidium brunonianum</i>		
Stylidiaceae	<i>Stylidium piliferum</i>		
Stylidiaceae	<i>Stylidium spathulatum</i>		
Xanthorrhoeaceae	<i>Xanthorrhoea gracilis</i>		
Zamiaceae	<i>Macrozamia riedlei</i>		

NBX0317 Detail

Created: 1/11/2016

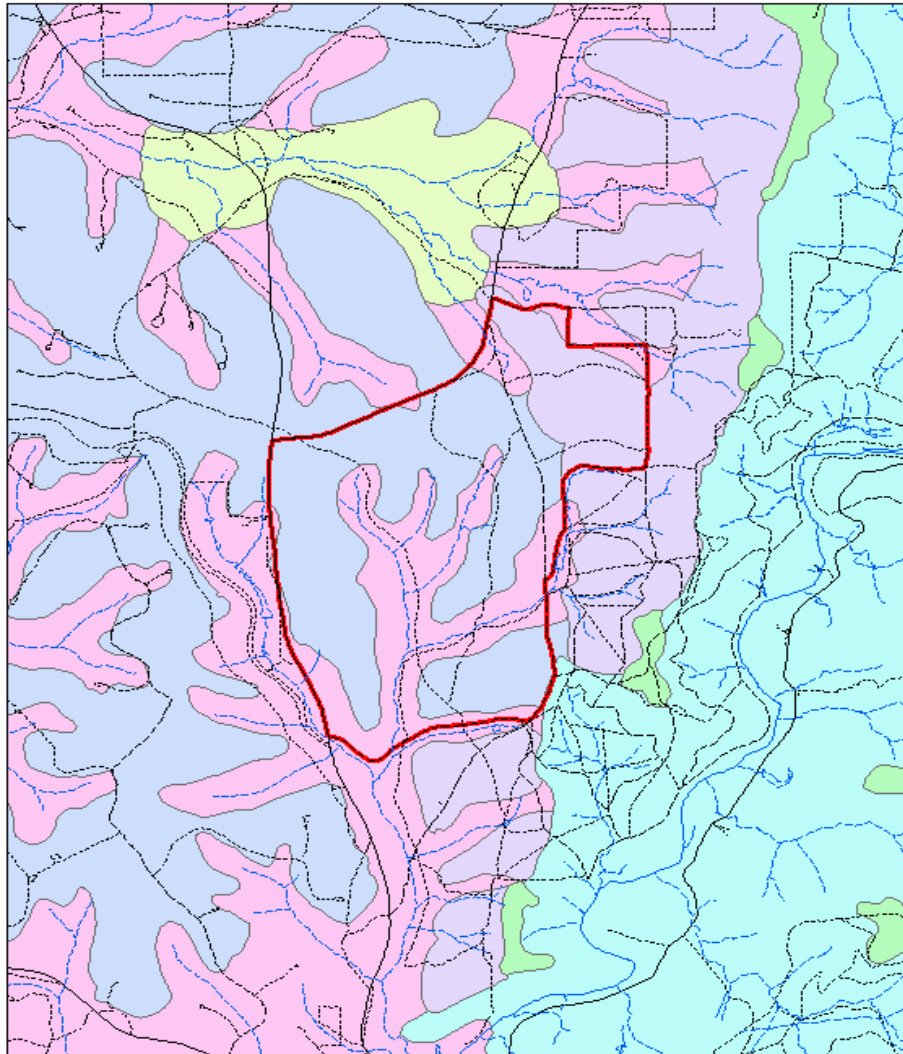
Common Name	Scientific name	Cons	Timber	Score	Habitat		
		Status	Harvest		ID	FDIS Land System	FDIS Landscape Unit
Woylie (Brush-tailed Bettong)	<i>Bettongia penicillata ogilbyi</i>	CR		Low	8	Darling Plateau	Scarp
Forest Red-tailed Black Cockatoo	<i>Calyptorhynchus banksii naso</i>	VU	12	High	8	Darling Plateau	Scarp
Forest Red-tailed Black Cockatoo	<i>Calyptorhynchus banksii naso</i>	VU	12	High	15	Darling Plateau	Jarrah Valleys South
Chuditch (Western Quoll)	<i>Dasyurus geoffroii</i>	VU		High	8	Darling Plateau	Scarp
Chuditch (Western Quoll)	<i>Dasyurus geoffroii</i>	VU		Moderate	15	Darling Plateau	Jarrah Valleys South
Chuditch (Western Quoll)	<i>Dasyurus geoffroii</i>	VU		Moderate	32	Blackwood Plateau	Jarrah Uplands
Chuditch (Western Quoll)	<i>Dasyurus geoffroii</i>	VU		Moderate	35	Blackwood Plateau	Valleys
Peregrine Falcon	<i>Falco peregrinus</i>	OS		Low	8	Darling Plateau	Scarp
Peregrine Falcon	<i>Falco peregrinus</i>	OS		Low	32	Blackwood Plateau	Jarrah Uplands
Western False Pipistrelle	<i>Falsistrellus mackenziei</i>	P4	12	High	8	Darling Plateau	Scarp
Western False Pipistrelle	<i>Falsistrellus mackenziei</i>	P4	12	High	15	Darling Plateau	Jarrah Valleys South
Western False Pipistrelle	<i>Falsistrellus mackenziei</i>	P4	12	High	32	Blackwood Plateau	Jarrah Uplands
Western False Pipistrelle	<i>Falsistrellus mackenziei</i>	P4	12	High	35	Blackwood Plateau	Valleys
Water-rat	<i>Hydromys chrysogaster</i>	P4		Moderate	15	Darling Plateau	Jarrah Valleys South
Quenda (Southern Brown Bandicoot)	<i>Isoodon obesulus fusciventer</i>	P4		Moderate	8	Darling Plateau	Scarp
Quenda (Southern Brown Bandicoot)	<i>Isoodon obesulus fusciventer</i>	P4		High	15	Darling Plateau	Jarrah Valleys South
Quenda (Southern Brown Bandicoot)	<i>Isoodon obesulus fusciventer</i>	P4		Moderate	32	Blackwood Plateau	Jarrah Uplands
Quenda (Southern Brown Bandicoot)	<i>Isoodon obesulus fusciventer</i>	P4		High	35	Blackwood Plateau	Valleys
Western Brush Wallaby	<i>Macropus irma</i>	P4		High	8	Darling Plateau	Scarp
Western Brush Wallaby	<i>Macropus irma</i>	P4		Moderate	15	Darling Plateau	Jarrah Valleys South
Western Brush Wallaby	<i>Macropus irma</i>	P4		Moderate	32	Blackwood Plateau	Jarrah Uplands
Western Brush Wallaby	<i>Macropus irma</i>	P4		Moderate	35	Blackwood Plateau	Valleys
Brush-tailed Phascogale	<i>Phascogale tapoatafa</i> ssp. WAM M434	VU	12	High	8	Darling Plateau	Scarp
Brush-tailed Phascogale	<i>Phascogale tapoatafa</i> ssp. WAM M434	VU	12	High	15	Darling Plateau	Jarrah Valleys South
Brush-tailed Phascogale	<i>Phascogale tapoatafa</i> ssp. WAM M434	VU	12	High	32	Blackwood Plateau	Jarrah Uplands
Brush-tailed Phascogale	<i>Phascogale tapoatafa</i> ssp. WAM M434	VU	12	High	35	Blackwood Plateau	Valleys
Western Ringtail Possum	<i>Pseudocheirus occidentalis</i>	EN	13	Moderate	15	Darling Plateau	Jarrah Valleys South
Western Ringtail Possum	<i>Pseudocheirus occidentalis</i>	EN	13	Low	35	Blackwood Plateau	Valleys
Quokka	<i>Setonix brachyurus</i>	VU	2	Low	8	Darling Plateau	Scarp
Quokka	<i>Setonix brachyurus</i>	VU	2	Moderate	15	Darling Plateau	Jarrah Valleys South
Quokka	<i>Setonix brachyurus</i>	VU	2	Moderate	35	Blackwood Plateau	Valleys
Common Brushtail Possum	<i>Trichosurus vulpecula</i>		12	Moderate	8	Darling Plateau	Scarp
Common Brushtail Possum	<i>Trichosurus vulpecula</i>		12	Moderate	15	Darling Plateau	Jarrah Valleys South
Common Brushtail Possum	<i>Trichosurus vulpecula</i>		12	Low	32	Blackwood Plateau	Jarrah Uplands
Common Brushtail Possum	<i>Trichosurus vulpecula</i>		12	Low	35	Blackwood Plateau	Valleys

Forest Red-tailed Black Cockatoo	<i>Calyptorhynchus banksii naso</i>	VU	12	High	32 Blackwood Plateau	Jarrah Uplands
Forest Red-tailed Black Cockatoo	<i>Calyptorhynchus banksii naso</i>	VU	12	High	35 Blackwood Plateau	Valleys
Baudin's Cockatoo	<i>Calyptorhynchus baudinii</i>	EN	12	High	8 Darling Plateau	Scarp
Baudin's Cockatoo	<i>Calyptorhynchus baudinii</i>	EN	12	High	15 Darling Plateau	Jarrah Valleys South
Baudin's Cockatoo	<i>Calyptorhynchus baudinii</i>	EN	12	High	32 Blackwood Plateau	Jarrah Uplands
Baudin's Cockatoo	<i>Calyptorhynchus baudinii</i>	EN	12	High	35 Blackwood Plateau	Valleys
Masked Owl	<i>Tyto novaehollandiae novaehollandiae</i>	P3		Low	8 Darling Plateau	Scarp
Masked Owl	<i>Tyto novaehollandiae novaehollandiae</i>	P3		Low	15 Darling Plateau	Jarrah Valleys South
Masked Owl	<i>Tyto novaehollandiae novaehollandiae</i>	P3		Low	32 Blackwood Plateau	Jarrah Uplands
Masked Owl	<i>Tyto novaehollandiae novaehollandiae</i>	P3		Low	35 Blackwood Plateau	Valleys
Barking Owl	<i>Ninox connivens connivens</i>	P2		Low	8 Darling Plateau	Scarp
Barking Owl	<i>Ninox connivens connivens</i>	P2		Low	15 Darling Plateau	Jarrah Valleys South
Barking Owl	<i>Ninox connivens connivens</i>	P2		Low	32 Blackwood Plateau	Jarrah Uplands
Barking Owl	<i>Ninox connivens connivens</i>	P2		Low	35 Blackwood Plateau	Valleys
Noisy Scrub Bird	<i>Atrichornis clamosus</i>	EN	4	Low	8 Darling Plateau	Scarp
White-bellied Frog	<i>Geocrinia alba</i>	CR	6	Low	32 Blackwood Plateau	Jarrah Uplands
White-bellied Frog	<i>Geocrinia alba</i>	CR	6	High	35 Blackwood Plateau	Valleys
Orange-bellied Frog	<i>Geocrinia vitellina</i>	VU	7	High	35 Blackwood Plateau	Valleys
Mud Minnow	<i>Galaxiella munda</i>	VU		Moderate	35 Blackwood Plateau	Valleys
Balston's Pygmy Perch	<i>Nannatherina balstoni</i>	VU		Moderate	35 Blackwood Plateau	Valleys

NBX0317 Summary**Created: 1/11/2016**

Common Name	Scientific name	Cons Status	Timber Harvest
Woylie (Brush-tailed Bettong)	<i>Bettongia penicillata ogilbyi</i>	CR	
Forest Red-tailed Black Cockatoo	<i>Calyptorhynchus banksii naso</i>	VU	12
Chuditch (Western Quoll)	<i>Dasyurus geoffroii</i>	VU	
Peregrine Falcon	<i>Falco peregrinus</i>	OS	
Western False Pipistrelle	<i>Falsistrellus mackenziei</i>	P4	12
Water-rat	<i>Hydromys chrysogaster</i>	P4	
Quenda (Southern Brown Bandicoot)	<i>Isodon obesulus fusciventer</i>	P4	
Western Brush Wallaby	<i>Macropus irma</i>	P4	
Brush-tailed Phascogale	<i>Phascogale tapoatafa ssp. WAM M434</i>	VU	12
Western Ringtail Possum	<i>Pseudocheirus occidentalis</i>	EN	13
Quokka	<i>Setonix brachyurus</i>	VU	2
Common Brushtail Possum	<i>Trichosurus vulpecula</i>		12
Forest Red-tailed Black Cockatoo	<i>Calyptorhynchus banksii naso</i>	VU	12
Baudin's Cockatoo	<i>Calyptorhynchus baudinii</i>	EN	12
Masked Owl	<i>Tyto novaehollandiae novaehollandiae</i>	P3	
Barking Owl	<i>Ninox connivens connivens</i>	P2	
Noisy Scrub Bird	<i>Atrichornis clamosus</i>	EN	4
White-bellied Frog	<i>Geocrinia alba</i>	CR	6
Orange-bellied Frog	<i>Geocrinia vitellina</i>	VU	7
Mud Minnow	<i>Galaxiella munda</i>	VU	
Balston's Pygmy Perch	<i>Nannatherina balstoni</i>	VU	

Created: 1/11/2016



DATE: 08/11/2016
HARVEST OPERATION ID: NBX0317

FDIS TYPES PRESENT: 8, 15, 32 & 35

KNOWN FAUNA ISSUES:
- Threatened Fauna Populations recorded BOUNDING the Harvest Coupe.
- Contact District

— Major Hydro — Sealed Roads - - - - - Tracks
- - - - - Minor Hydro - - - - - Unsealed Roads Harvest Coupe

FDIS Fauna Habitat

- | | |
|--|---|
| 1 Darling Plateau - Jarrah Uplands North | 28 Southern Plains - Jarrah |
| 2 Darling Plateau - Jarrah Uplands East | 29 Southern Plains - Karri |
| 3 Darling Plateau - Jarrah Uplands South | 30 Southern Plains - Heath/Sedgeland |
| 4 Darling Plateau - Jarrah Uplands South East | 31 South Coast Dunes - South Coast Dunes |
| 5 Darling Plateau - Karri Uplands | 32 Blackwood Plateau - Jarrah Uplands |
| 6 Darling Plateau - Wandoo Uplands North | 33 Blackwood Plateau - Karri Uplands |
| 7 Darling Plateau - Powder Bark Uplands | 34 Blackwood Plateau - Depressions / Swamps |
| 8 Darling Plateau - Scarp | 35 Blackwood Plateau - Valleys |
| 10 Darling Plateau - Depressions/Swamps South | 36 Margaret River Plateau - Jarrah Uplands |
| 11 Darling Plateau - Depressions/Swamps East | 37 Margaret River Plateau - Karri Uplands |
| 12 Darling Plateau - Depressions/Swamps South East | 38 Margaret River Plateau - Jarrah Valleys |
| 13 Darling Plateau - Jarrah Valleys North | 39 Margaret River Plateau - Karri Valleys |
| 14 Darling Plateau - Jarrah Valleys East | 41 Lewin Naturalist Coast - Karri |
| 15 Darling Plateau - Jarrah Valleys South | 42 Lewin Naturalist Coast - Coast Heath |
| 16 Darling Plateau - Jarrah Valleys South East | 43 Scott Coastal Plain - Uplands |
| 17 Darling Plateau - Karri Valleys | 44 Scott Coastal Plain - Valleys / Swamps |
| 18 Darling Plateau - Wandoo Valleys North | 45 Redmond - Uplands |
| 19 Darling Plateau - Powder Bark Valleys | 46 Redmond - Valley |
| 20 Darling Plateau - Granite Outcrops | 47 Unloop - Jarrah Uplands |
| 21 Various - Estuaries / Open Water | 48 Unloop - Wandoo Uplands |
| 22 Collie Plain - Uplands | 49 Unloop - Jarrah Valleys |
| 23 Collie Plain - Depressions/Swamps | 50 Unloop - Wandoo Valleys |
| 24 Dandaragan Plateau - Uplands | 51 Unloop - Soubland |
| 25 Dandaragan Plateau - Valleys | 52 Swan Coastal Plain - Coastal Dunes |
| 26 Swan Coastal Plain - Uplands | 53 Darling Plateau - Wandoo Uplands South |
| 27 Swan Coastal Plain - Valleys | 54 Darling Plateau - Wandoo Valleys South |



1:50,000

