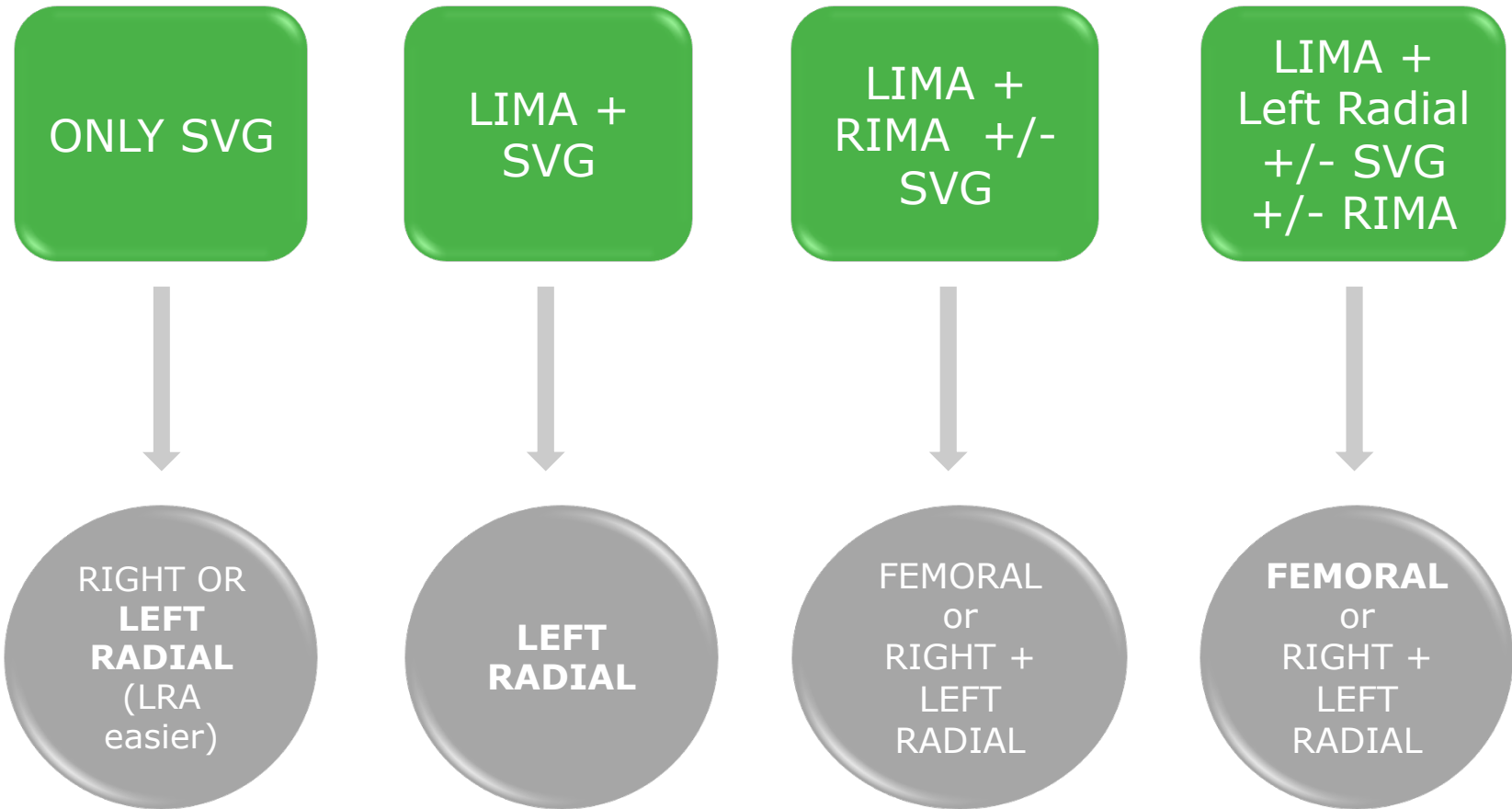




What is the preferred approach according to graft type?



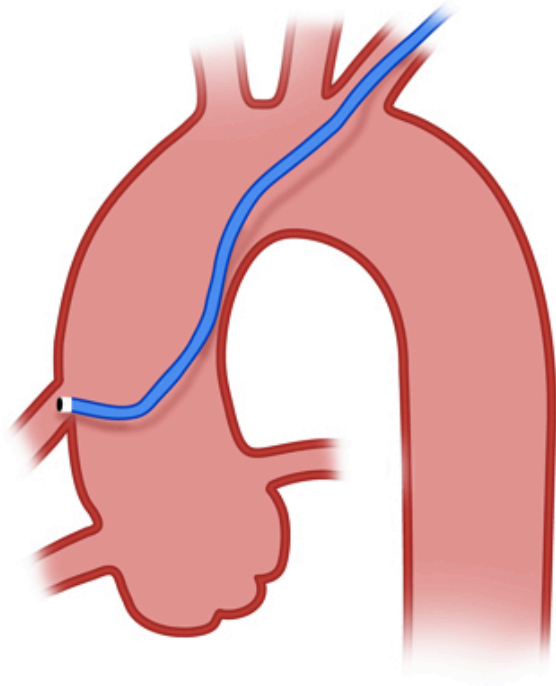


Homolateral IMA cannulation

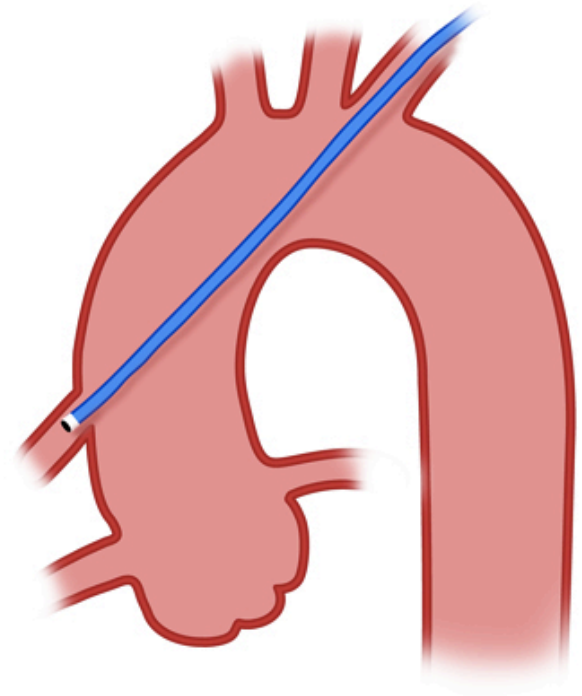




SVG to RCA

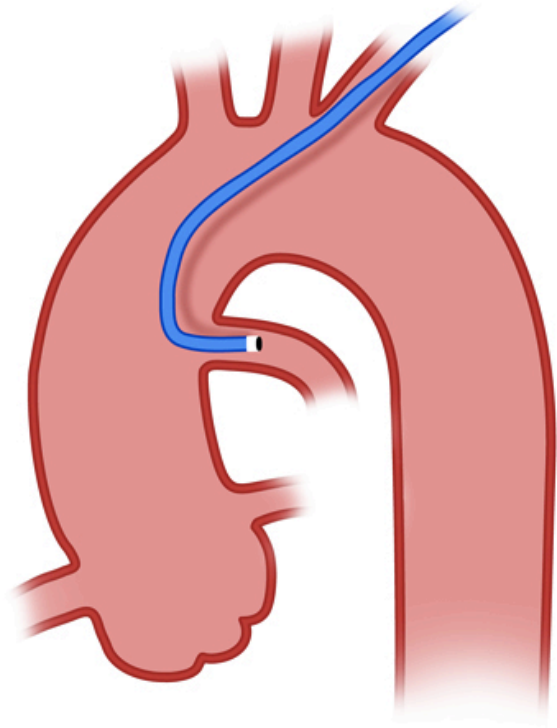


JR

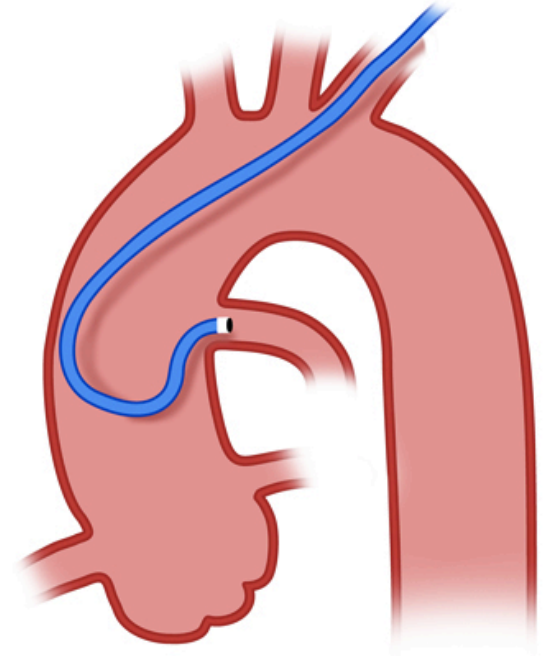


Multipurpose

SVG to LCA

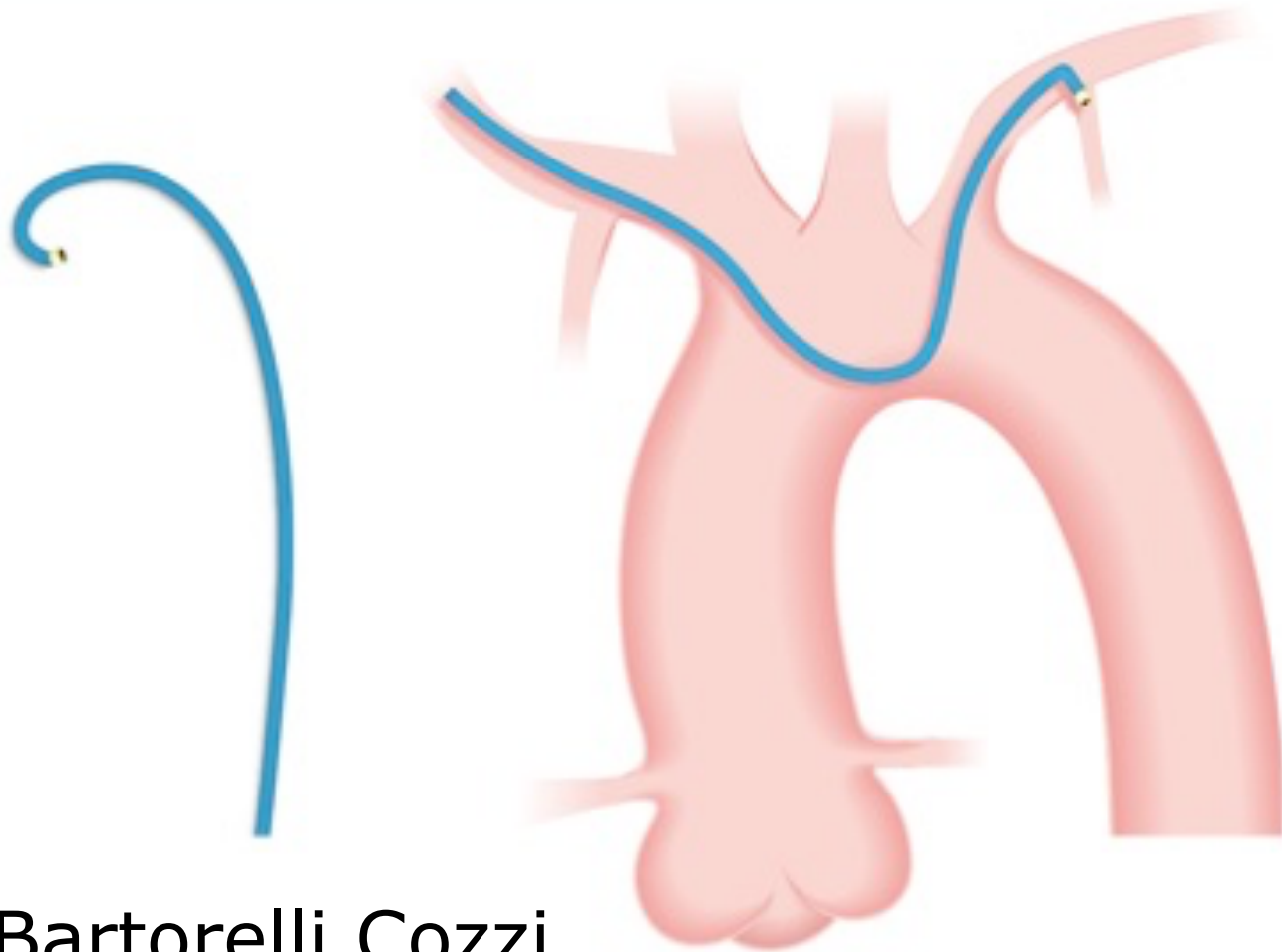


JR



AL

LIMA from right radial approach



IM Bartorelli Cozzi



Grafts

LIMA → IM or IM Bartorelli Cozzi

R-SVG → JR4 or MP

L-SVG → AL1-AL2

Catheter for graft - summary

Radial side choice according to grafts implantation

Internal mammary with specific IM or Bartorelli

Cozzi catheter

Right saphenous graft with Multipurpose

Left saphenous graft with Amplatz

Possible to cannulate LIMA by right radial access