

Microsoft™ SQL 2000 Server and Client

Installation Guide for Microsoft™ SQL 2000 Server and Client

33-10061-001

REV: A

PCSC
3541 Challenger Street
Torrance, CA 90503
Phone: (310) 303-3600
FAX: (310) 303-3600
www.1pcsc.com

First Edition – January 2007

Information in this manual is subject to change without notice and does not represent a commitment on the part of PCSC. The software described in this manual is furnished under a license agreement or nondisclosure agreement. The software may be used or copied only in accordance with the terms of the agreement. No part of this document may be reproduced or transmitted in any form or by any means, electronic or mechanical, including photocopying, recording, or information storage and retrieval systems, for any purpose other than specified in the agreement, without the express written permission of PCSC.

© 2007 PCSC. All Rights Reserved.

Printed in the United States of America.

Microsoft SQL 2000 Server and Client © is a trademark of Microsoft Corporation.

Published by **PCSC**
3541 Challenger Street
Torrance, CA 90503
Phone: (310) 303-3600
Fax: (310) 303-3600

0.1 Table of Contents

1.0 INSTALL MICROSOFT SQL SERVER 2000 – BASIC LOCAL INSTALLATION	1
1.1 Installation and Setup.....	1
2.0 BEFORE YOU BEGIN - INSTALLATION REQUIREMENTS.....	2
2.1 Software Requirements	2
2.2 Hardware Requirements	2
3.0 THE INITIAL INSTALLATION	3
3.1 The Initial Installation.....	3
3.2 Installing Microsoft SQL Server 2000.....	3
4.0 INSTALL MICROSOFT SQL 2000 CLIENT	21
4.1 Installation and Setup	21
5.0 BEFORE YOU BEGIN – INSTALLATION REQUIREMENTS.....	21
5.1 Software Requirements	21
5.2 Hardware Requirements	21
6.0 THE INITIAL INSTALLATION	22
6.1 The Initial Installation	22
6.2 Installing Microsoft SQL 2000 Client.....	22

1.0 Install Microsoft SQL Server 2000 – Basic Local Installation

This manual will assist in the installation of Microsoft™ SQL 2000 Server and Client software. This step by step guide describes how to install a SQL Server 2000 basic local installation.

1.1 Installation and Setup

User must have knowledge of Microsoft products and installation process. User must have Administrators permissions in order to install Windows™ SQL Server 2000.

2.0 Before You Begin - Installation Requirements

2.1 Software Requirements

1. Before loading the Windows™ SQL Server 2000, the following needs to be installed:

- Windows™ Server 2000 with SP3 or higher
- Windows™ Server 2003 with SP2 or higher

In order to confirm your system's current status, access www.windowsupdate.com from your system.

2. User must have Administrator permissions.

2.2 Hardware Requirements

Compare your server hardware features with the chart below.

Hardware Item	Min. Requirement
CPU	Pentium P4 3.0 GHz or faster.
Operating System	Microsoft Windows™ Server 2000™ (SP2 or higher) or Microsoft Windows™ Server 2003™ (SP3 or higher)
Application Software	Microsoft SQL Server 2000™
RAM	2 GB memory or greater
Hard Drive	(3) 80 GB ATA133 – 7200 RPM 1 – Operating system 1 – SQL Data files 1 – SQL Log files
CDRW or DVD-RW	12X CDRW with Nero or Roxio Software
Adapter	Windows 2000 Compatible video graphics adapter
Monitor	SVGA, 1024 x 768, 65k color
Keyboard	PS2 type
Mouse	WINDOWS compatible PS2 Mouse
Network Interface Card	10/100 MB Ethernet LAN card
U.P.S. (Uninterruptible Power Supply)	To meet system requirements

3.0 The Initial Installation

3.1 The Initial Installation

Close any Windows™ programs that you are currently running before beginning the installation.

3.2 Installing Microsoft SQL Server 2000

1. Before loading the Windows™ SQL Server 2000, the following needs to be installed:

- Windows™ Server 2000 with SP3 or higher
- Windows™ Server 2003 with SP2 or higher

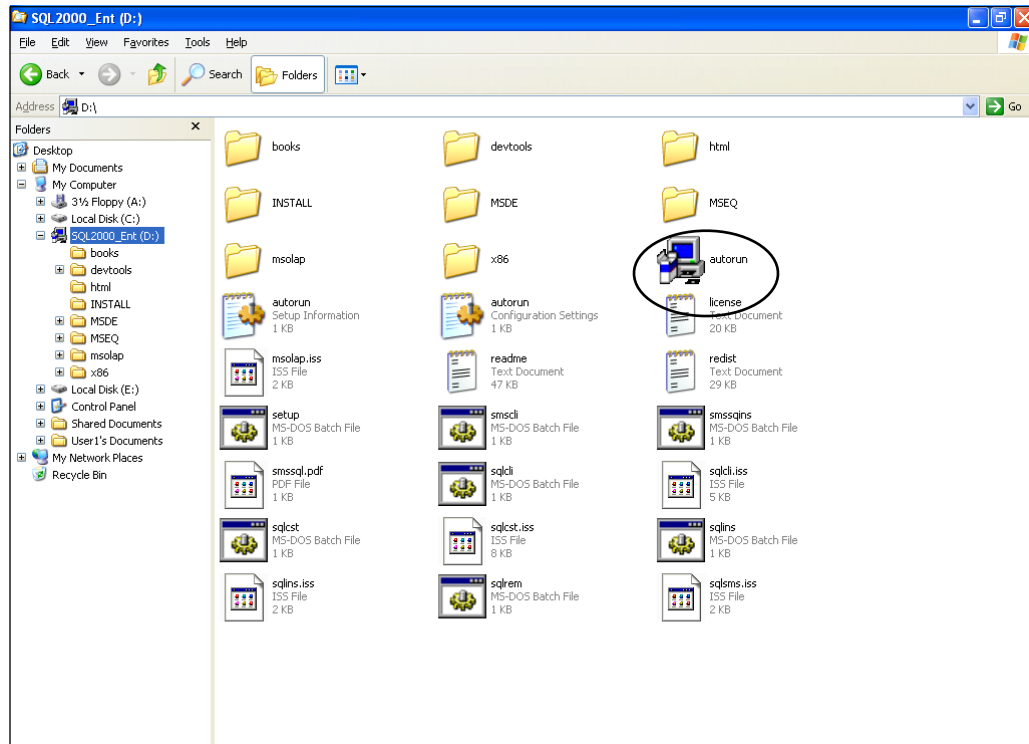
In order to confirm your system's current status, access www.windowsupdate.com from your system.

2. Place the SQL Server 2000, Enterprise Edition CD-ROM into the CD-ROM drive. The disk should auto launch to the SQL Server Installation window. However,

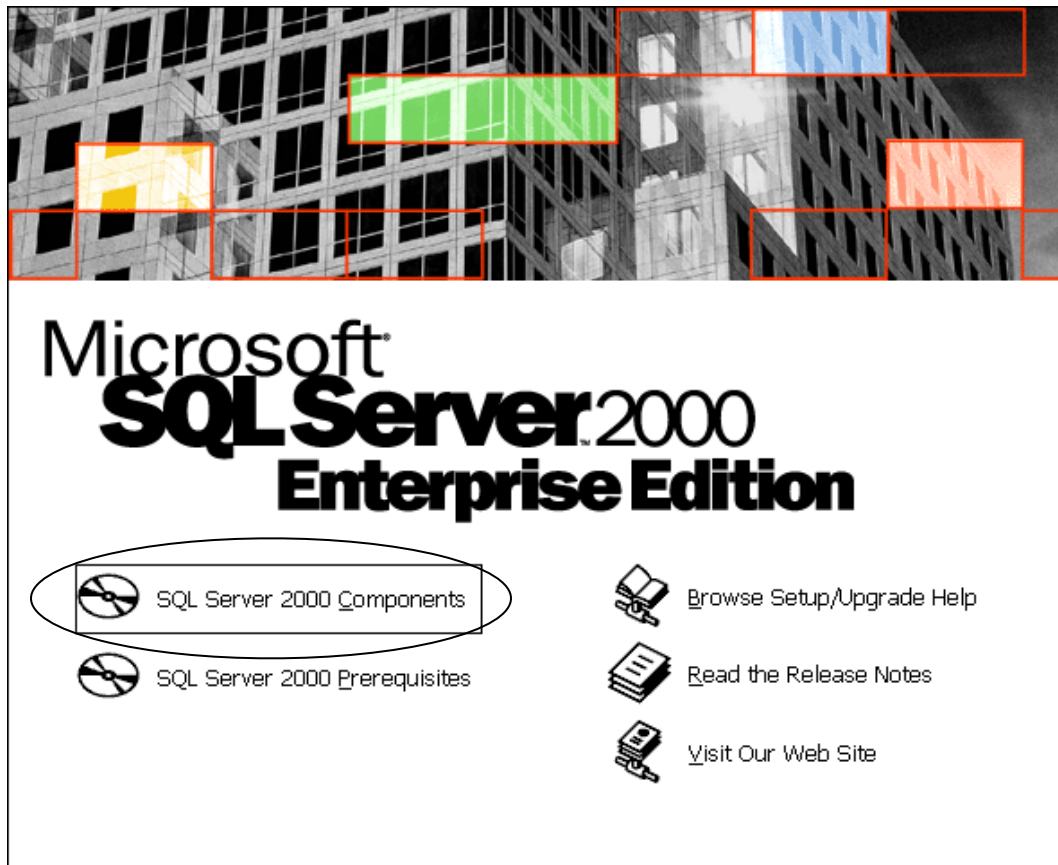
NOTE: If the CD-ROM doesn't automatically launch, open the My Computer window from the Start Menu or the Explorer window.

NOTE: The Windows™ SQL Server label may differ depending on the CD

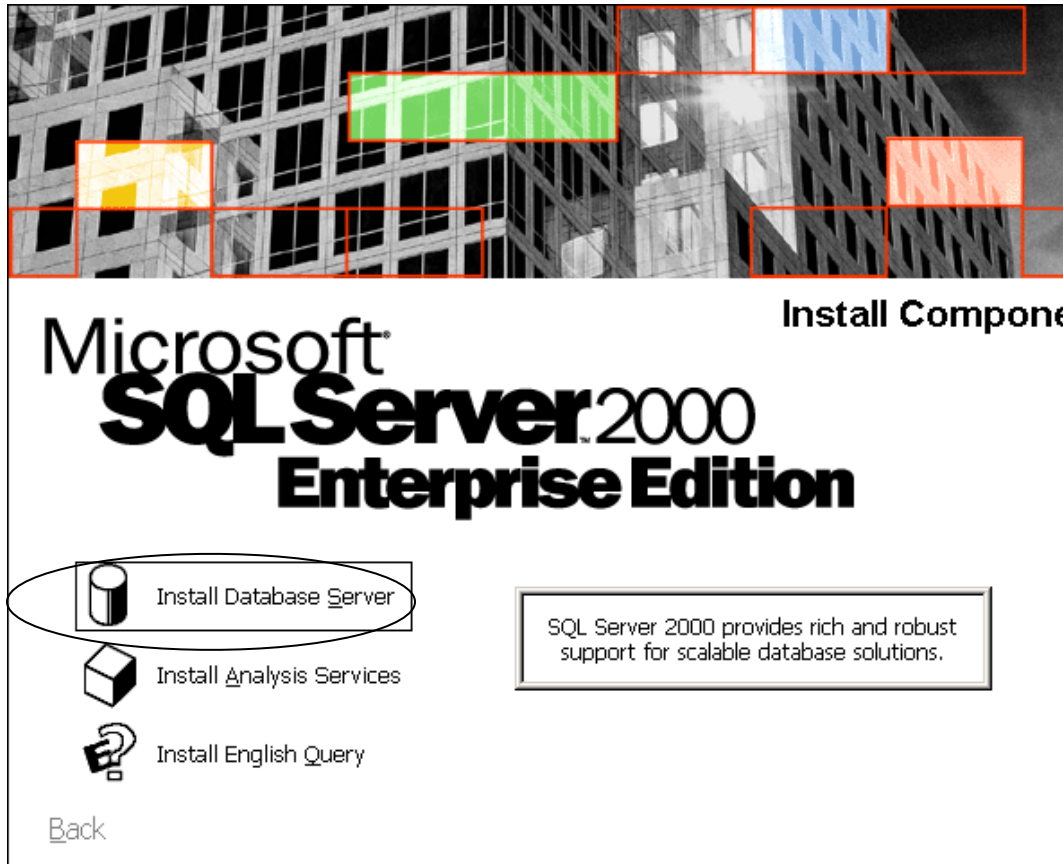
3. Press the CD-ROM drive in the Explorer window (labeled SQL2000_Ent).
4. Double-click on the **Autorun** icon.



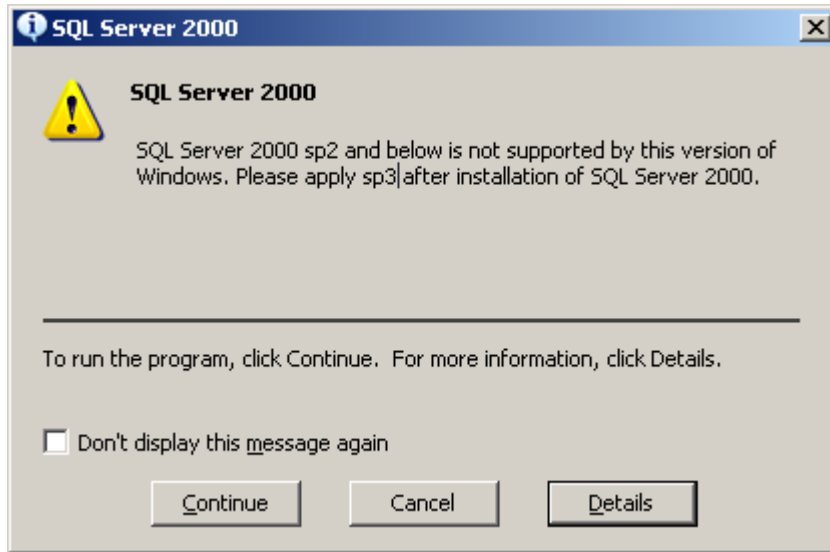
5. At the **Microsoft SQL Server 2000 Enterprise Edition** screen, press the **SQL Server 2000 Components** button.



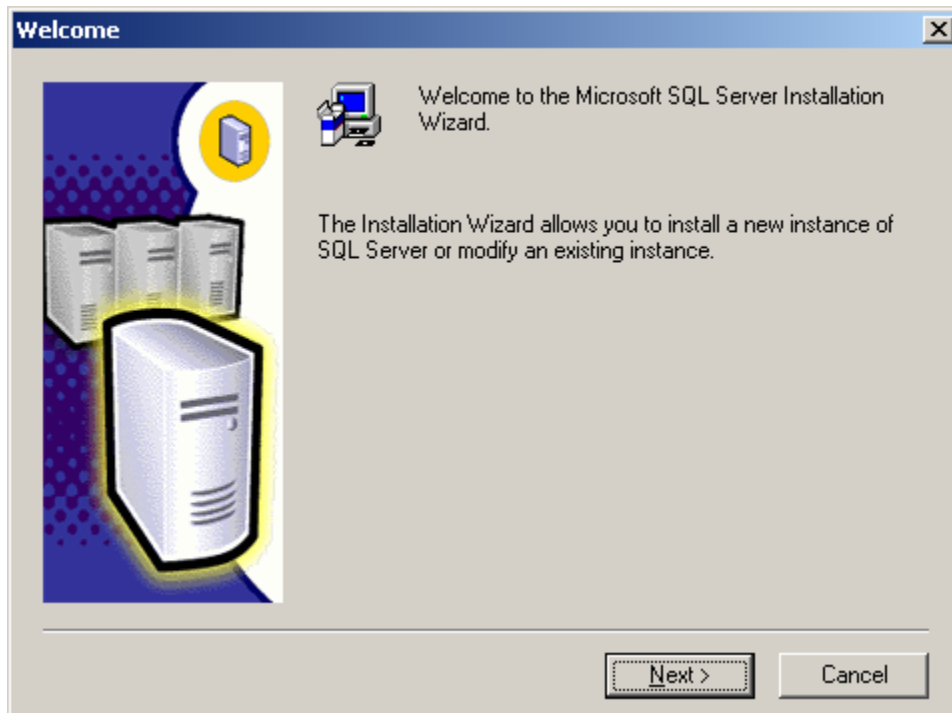
6. At the **Microsoft SQL Server 2000 – Enterprise Edition – Install Components** screen, press the **Install Database Server** button.



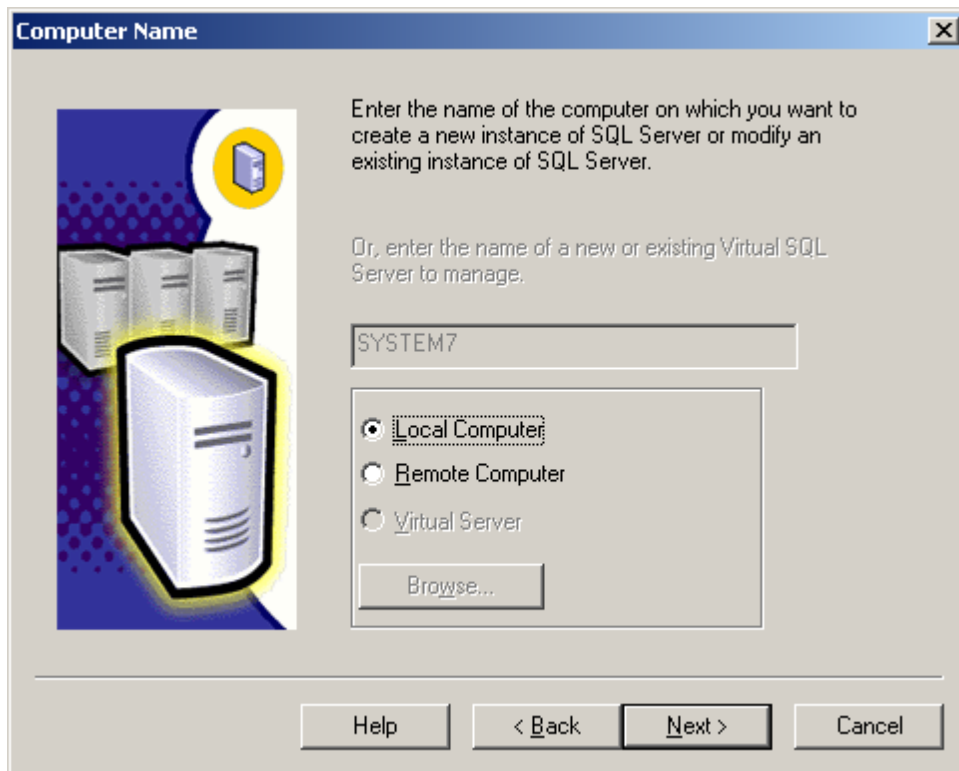
7. If the Operating System software is not Windows Server 2000 SP3 or higher or if Windows Server 2003 is installed you will see the **SQL Server 2000** window. Press the **Continue** button.



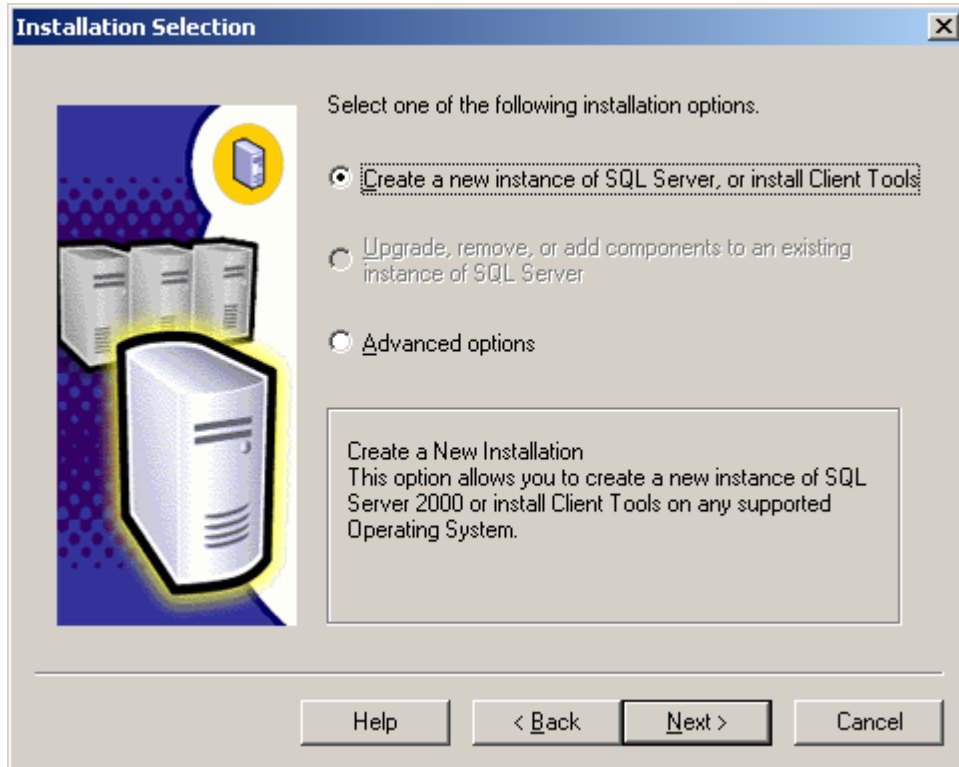
8. You will be brought to the **Welcome** window to the **Microsoft SQL Server Installation Wizard**. Press the **Next** button.



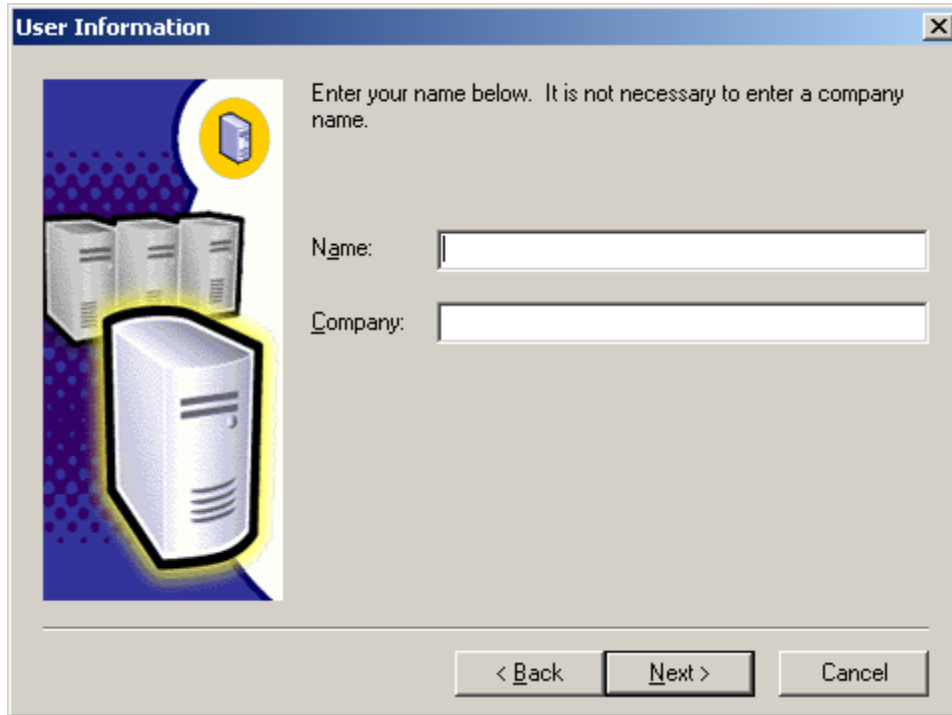
9. You will be brought to the **Computer Name** window. Since you are installing SQL 2000 Server on the Server computer, you will select the Local Computer. Press the **Next** button.



10. You will be brought to the Installation Selection window. Select the **“Create a new instance of SQL Server, or install Client Tools”** radio button.
11. Then press the **Next** button.

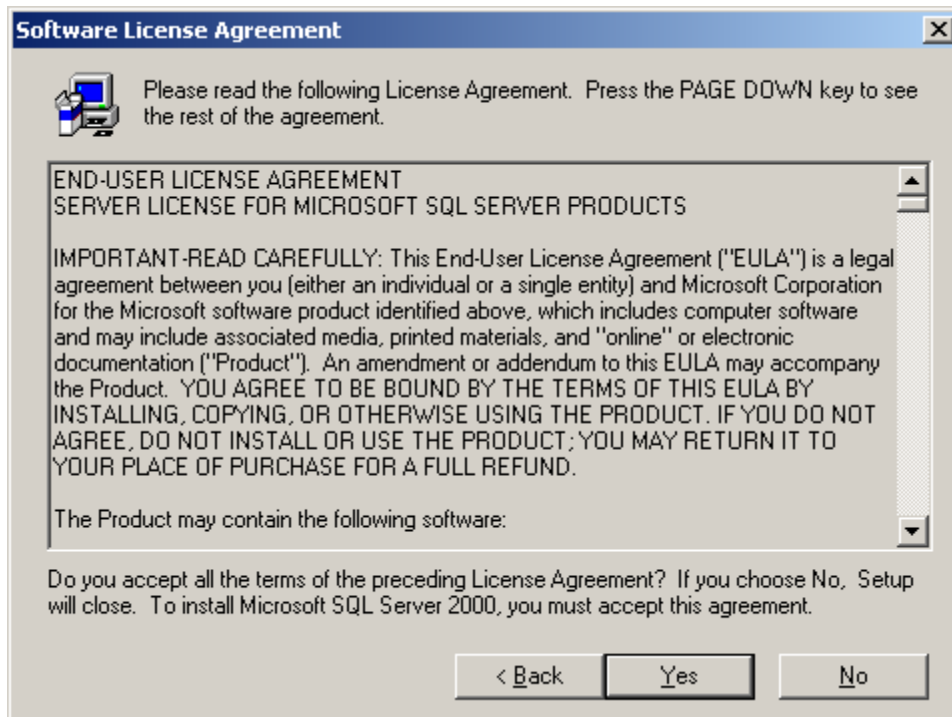


12. Use will be brought to the **User Information** window. Enter the computer **Name** and **Company** for your system.
13. Press the **Next** button.

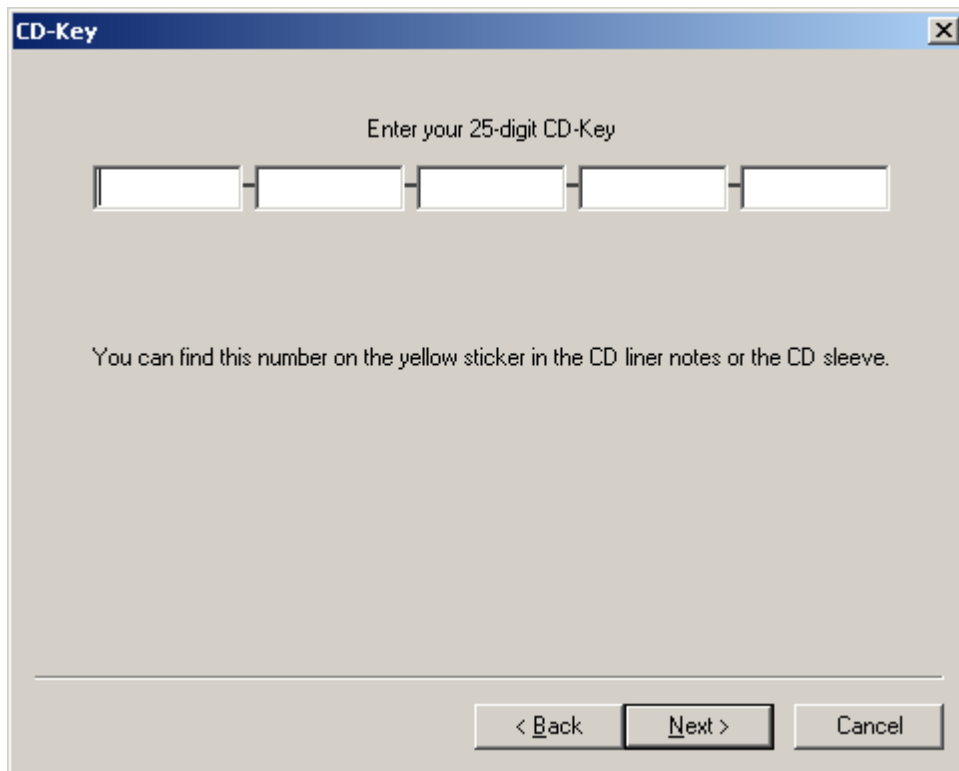


The image shows a Windows-style dialog box titled "User Information". On the left side, there is a graphic of three server racks, with the front-most one highlighted in yellow. Above the server racks is a small yellow circle containing a blue server icon. To the right of the graphic, the text reads: "Enter your name below. It is not necessary to enter a company name." Below this text are two text input fields. The first is labeled "Name:" and the second is labeled "Company:". At the bottom of the dialog box, there are three buttons: "< Back", "Next >", and "Cancel".

14. You will be brought to the **Software License Agreement** window. After reading the legal agreement, press the **Yes** button.

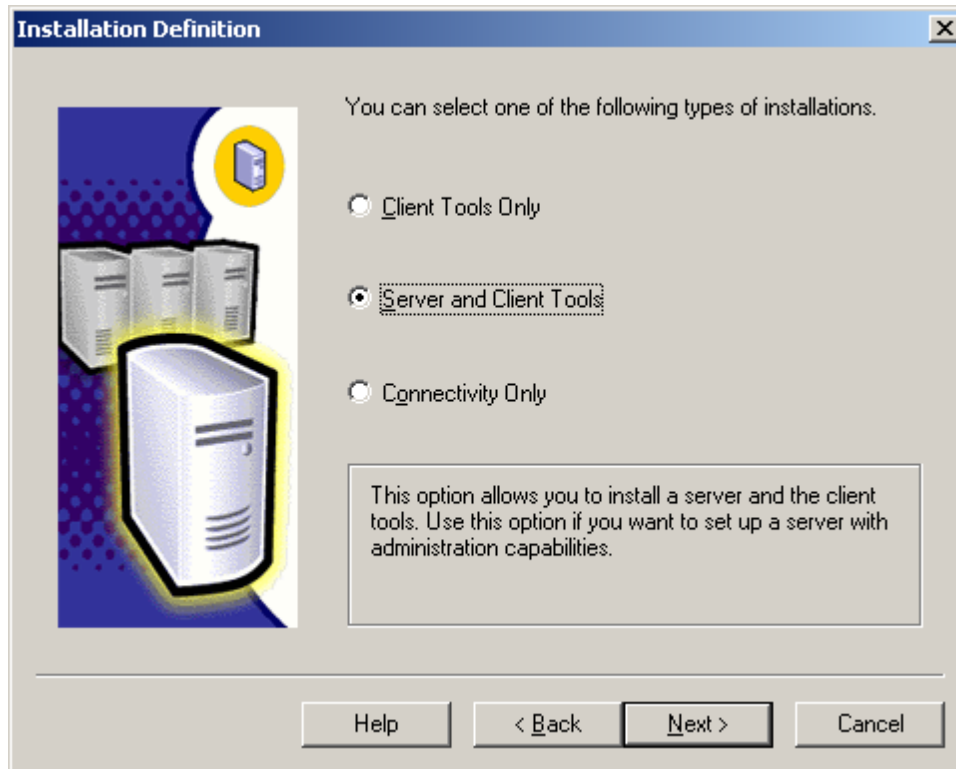


15. You will be brought to the **CD-Key** window. Enter the 25 digit CD-Key.
16. Press the **Next** button.

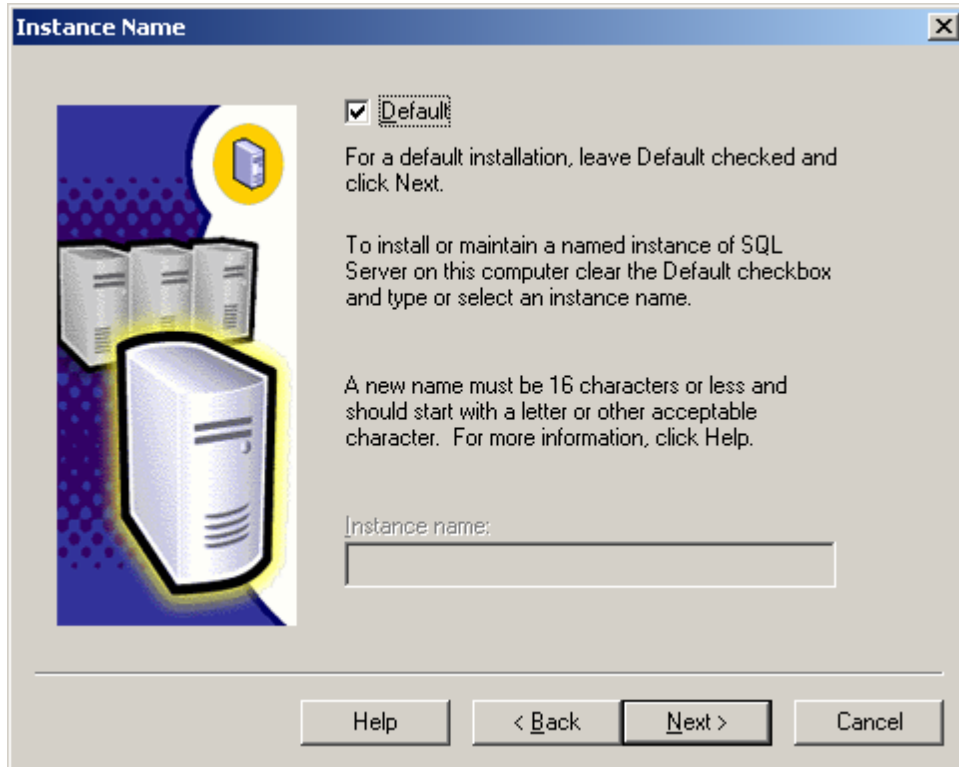


17. You will be brought to the **Installation Definition** window. Choose the "**Serve and Client Tools**" radio button.

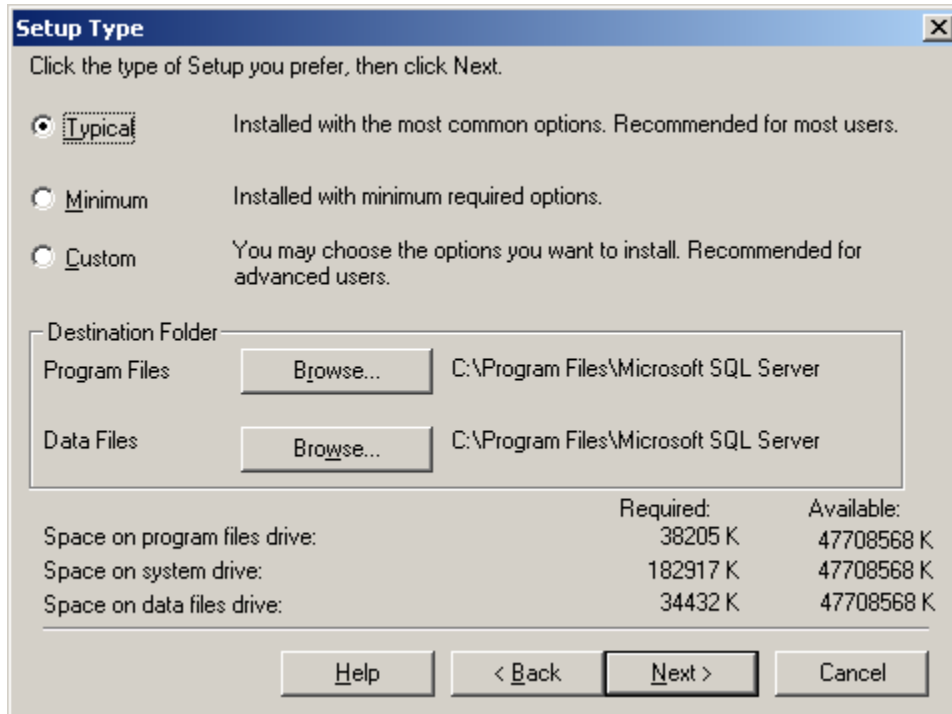
18. Press the **Next** button.



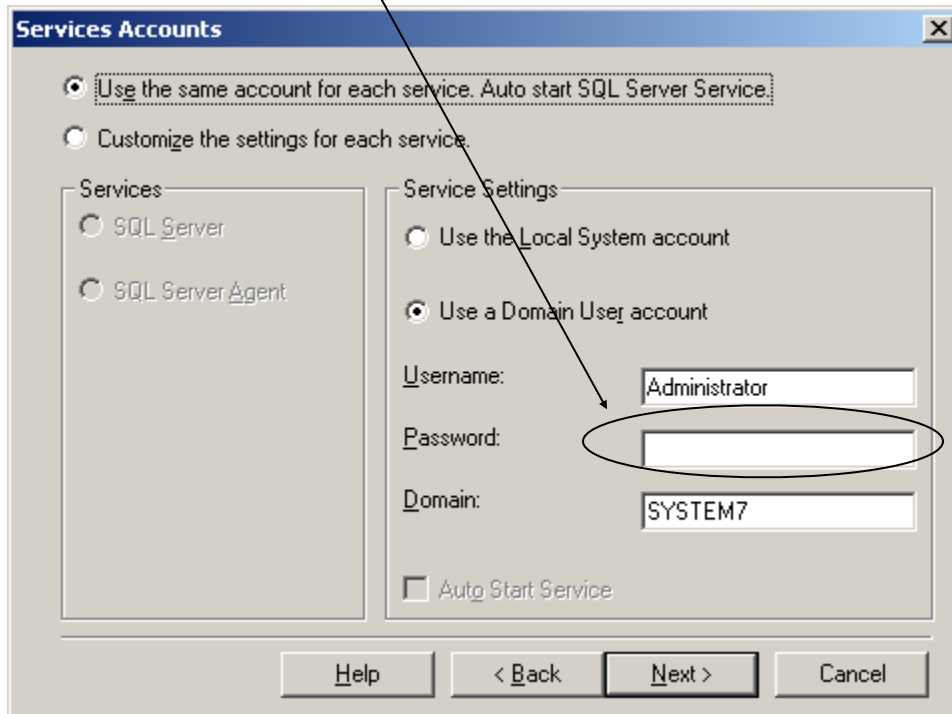
19. You will be brought to the **Instance Name** window.
 - a. The Default instance name is **MSSQLSERVER**
 - b. If Default is deselected an Instance Name must be entered. This will become the Server's name.
20. Press the **Next** button



21. You will be brought to the **Setup Type** window. Of the type of Setup preferred, select **Typical**.
22. Press the **Next** button.



23. You will be brought to the **Service Accounts** window. Choose the **'Use the same account for each service Auto start SQL Server Service.'** radio button.
24. Enter Administrator's Password.
25. Press the **Next** button.



26. You will be brought to the **Authentication Mode** window. Select the '**Mixed Mode (Windows Authentication and SQL Server Authentication)**' radio button.
27. Enter your password in the **Enter Password** and **Confirm Password** fields.
28. Press the **Next** button.

Authentication Mode

Choose the authentication mode.

Windows Authentication Mode

Mixed Mode (Windows Authentication and SQL Server Authentication)

Add password for the sa login:

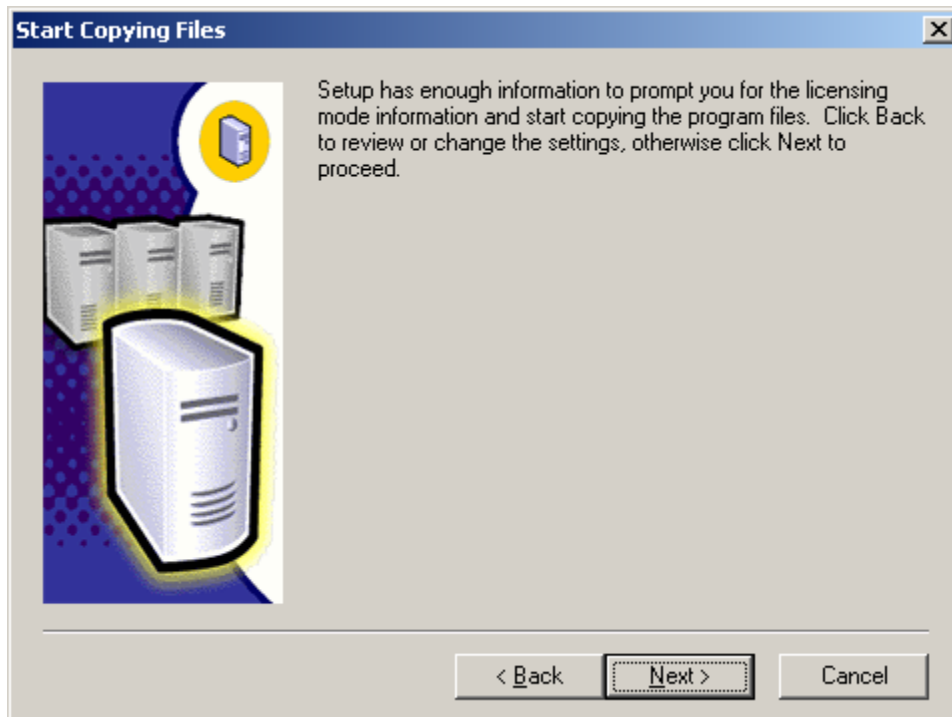
Enter password:

Confirm password:

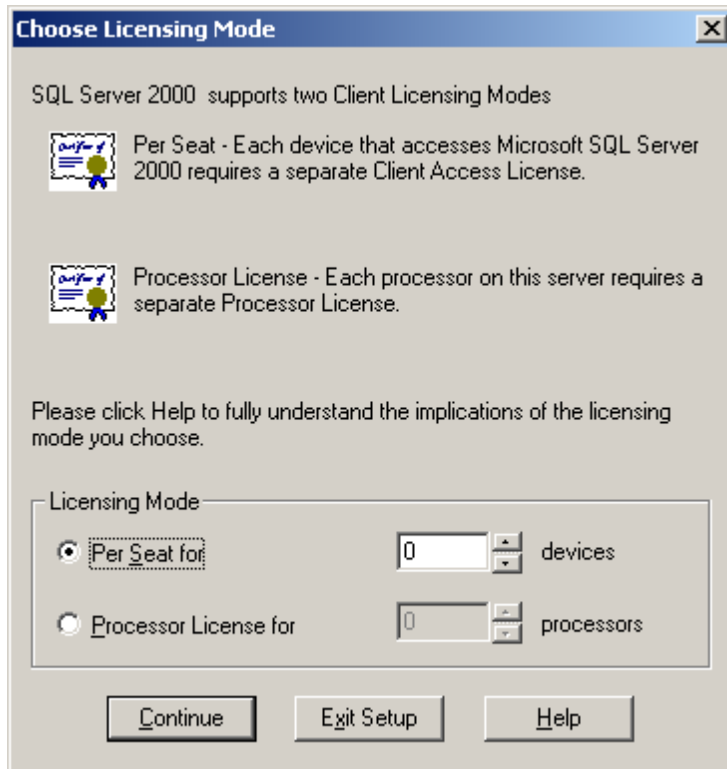
Blank Password (not recommended)

Help < Back Next > Cancel

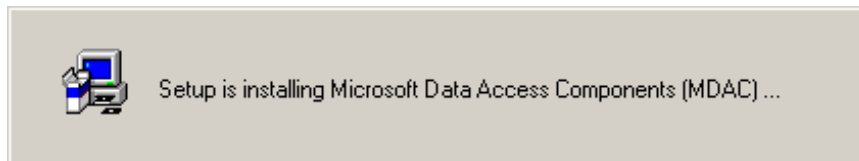
29. You will be brought to the **Start Copying Files** window.
30. Press the **Next** button.



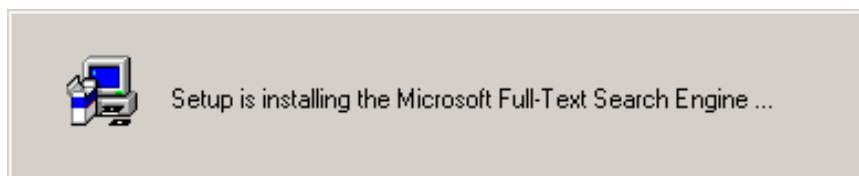
31. Once the file installation is complete, you will be brought to the **Choose Licensing Mode**. Select either **Per Seat** or **Processor License**.
32. Press the **Continue** button. The CD-ROM will now begin installing files onto the hard drive.



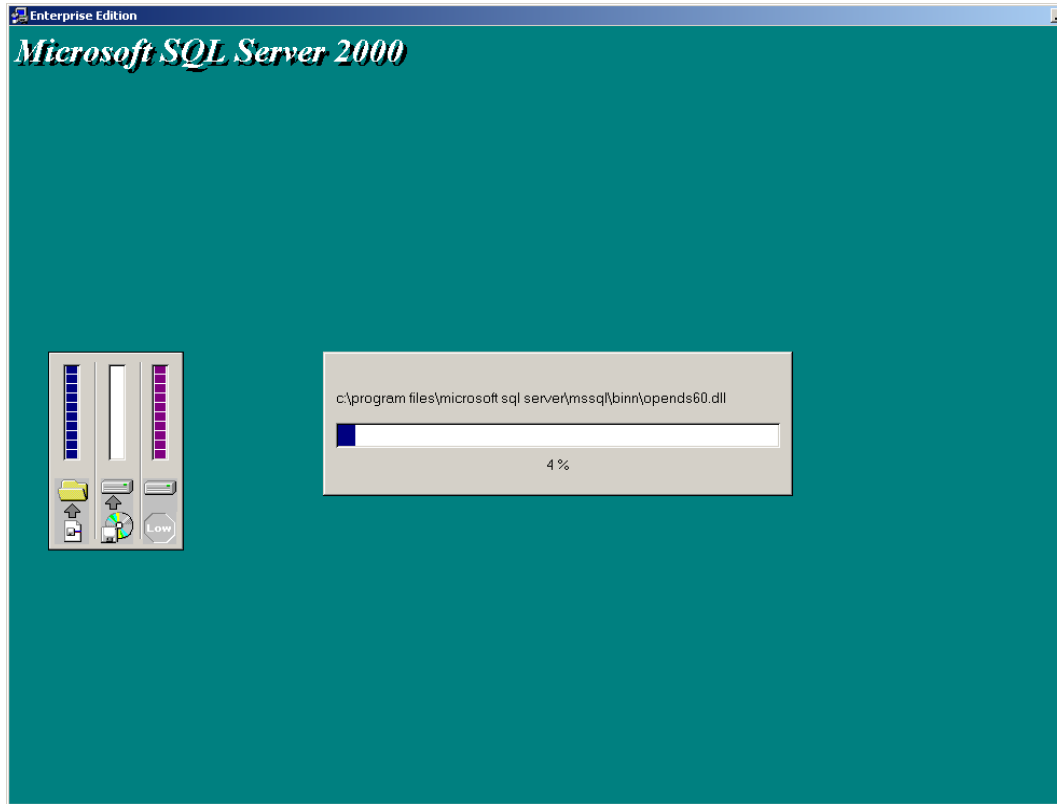
33. The system will display this window when loading the system.



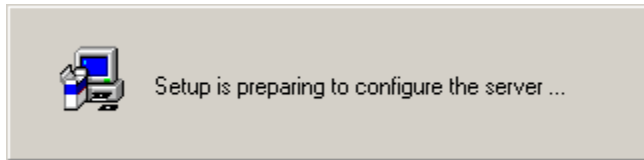
34. The system will display this window when installing the Microsoft Full-Text Search Engine.



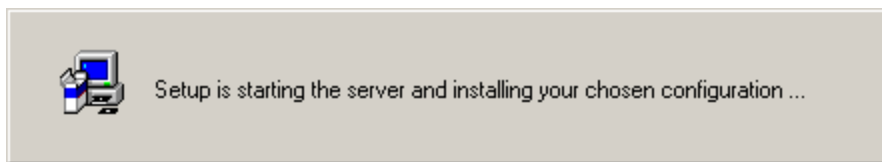
35. Microsoft SQL Server 2000 progress screen will display.



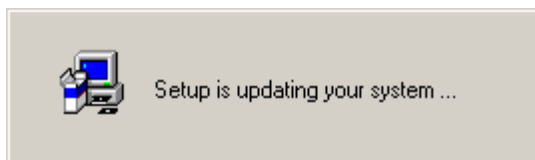
36. Setup is preparing to configure the server....



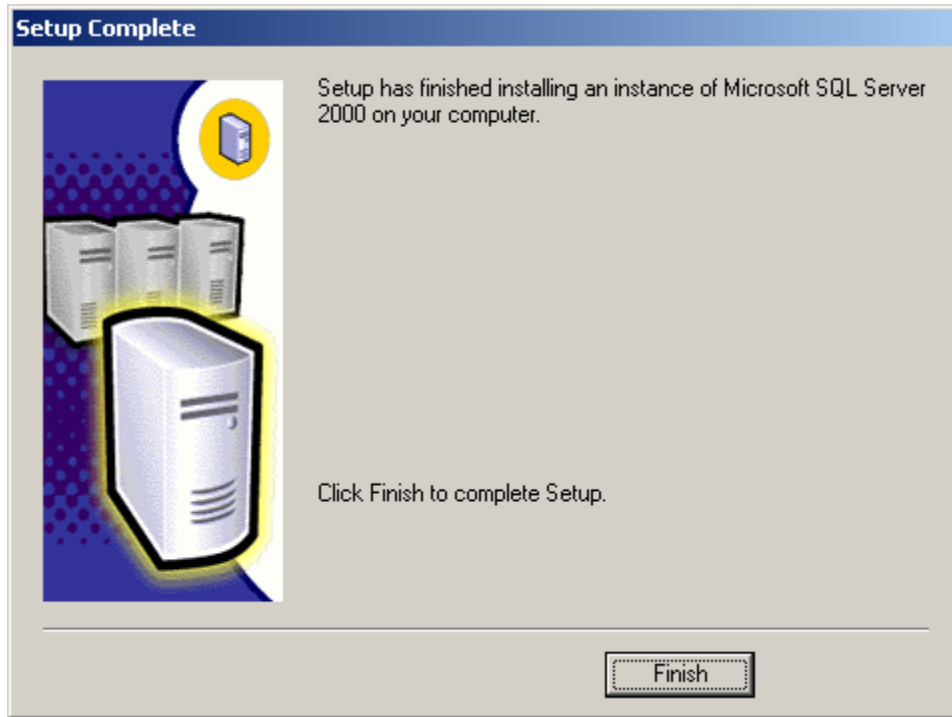
37. Setup is starting the server and installing your chosen configuration.... Window will display.



38. Set is updating your system window will display.



39. Once the setup is complete, you will be brought to the following window. Press the **Finish** button to complete the installation.



This completes the installation of Microsoft SQL Server 2000.

4.0 Install Microsoft SQL 2000 Client

This section describes the Installation of Microsoft™ SQL 2000 Client software. This step by step guide describes how to install SQL 2000 Client software.

4.1 Installation and Setup

User must have knowledge of Microsoft products and installation process. User must also have Administrators permissions in order to install Windows SQL 2000 Client software.

5.0 Before you Begin – Installation Requirements

5.1 Software Requirements

To install Microsoft™ SQL 2000 Client software the following requirements must be met:

- Microsoft Windows 2000 Professional™ (SP3 or higher) or Windows XP Professional™ (SP2 or higher)
- User must have Administrators permissions.

5.2 Hardware Requirements

Compare your computer hardware features with the chart listing the requirements for proper operation of LiNC-SQL. The following minimum specifications are for the Host, Concentrator and / or Workstation

Hardware Item	Min. Requirement
CPU	Pentium 4 3.0 GHz or greater.
Operating System	Windows 2000™ Professional (SP3 or higher), or Windows XP™ Professional (SP2 or higher)
Application Software	Microsoft SQL Server 2000™
RAM	1.0 GB for Host, Concentrator and Workstation
Hard Drive	40.0 GB IDE
CDRW or DVD-RW	12X CDRW with Nero or Roxio Software
Adapter	Windows 2000 Compatible video graphics adapter
Monitor	SVGA, 1024 x 768
Keyboard	PS-2
Mouse	PS-2 Mouse
Serial Port	1RS-232 COM 1
Network Interface Card	10/100 MB Ethernet LAN card
U.P.S. (Uninterruptible Power Supply)	To meet system requirements

6.0 The Initial Installation

6.1 The Initial Installation

Close any Windows™ programs that you are currently running before beginning the installation.

6.2 Installing Microsoft SQL 2000 Client

1. Before loading the Windows™ SQL 2000, the following needs to be installed:

- Windows™ 2000 Professional with SP3 or higher
- Windows™ XP Professional with SP2 or higher
- All Windows™ updates

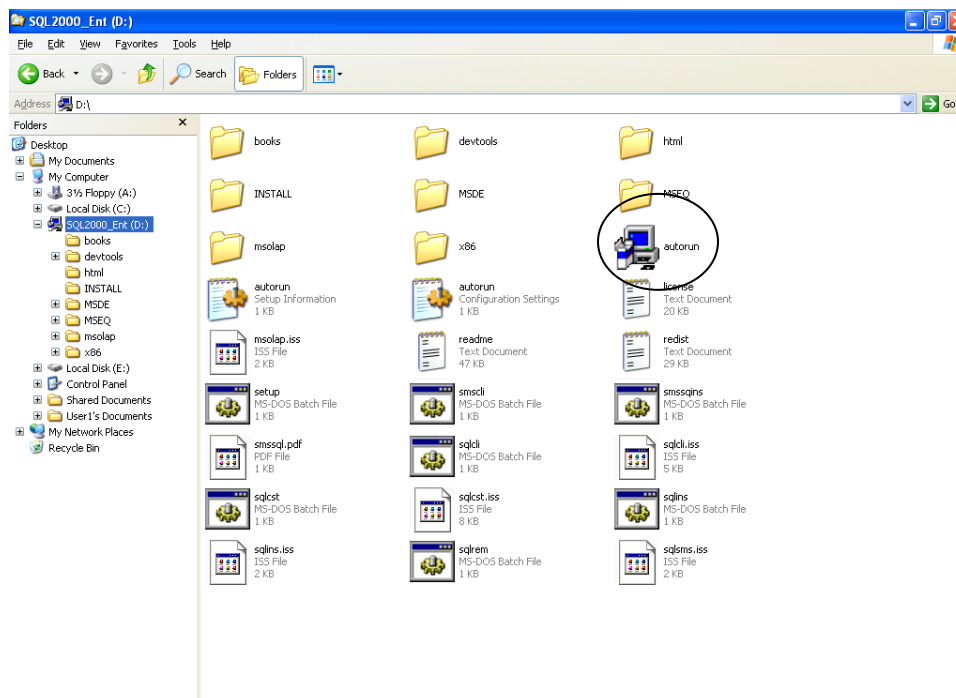
In order to confirm your system's current status, access www.windowsupdate.com from your system.

2. Place the SQL Server 2000, Enterprise Edition CD-ROM into the CD-ROM drive. The disk should auto launch to the SQL Server Installation window. However,

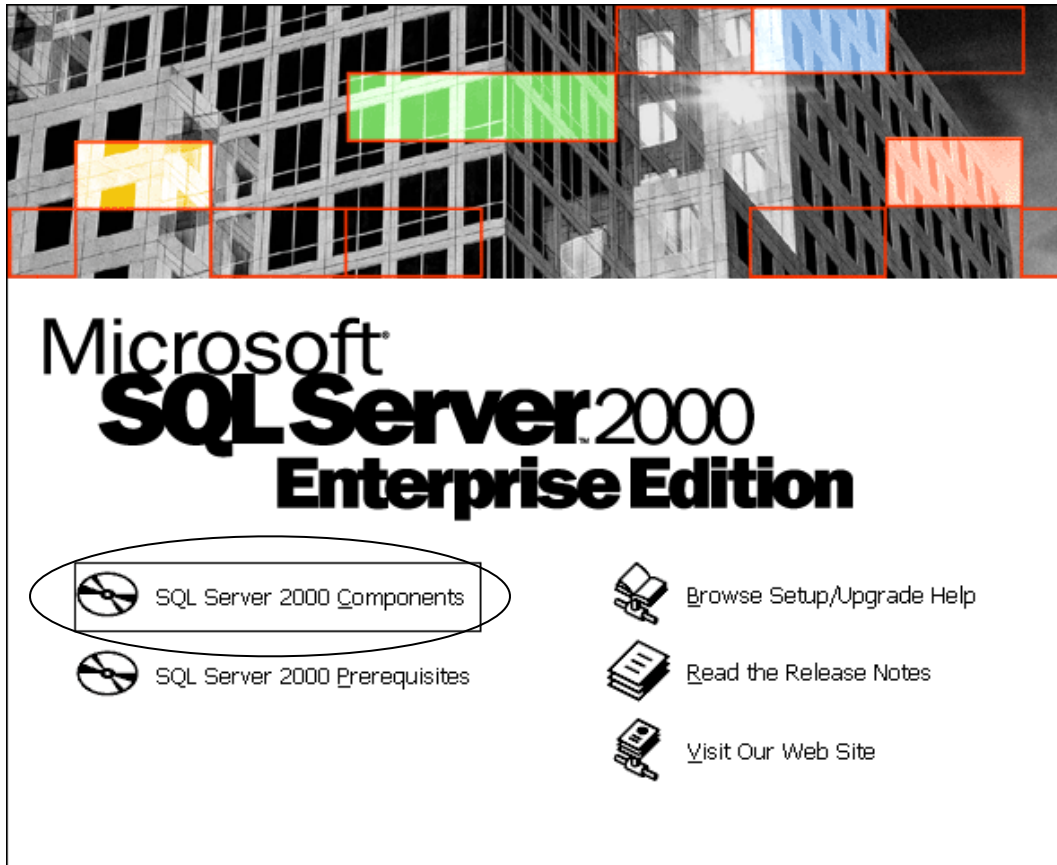
NOTE: If the CD-ROM doesn't automatically launch, open the My Computer window from the Start Menu or the Explorer window.

NOTE: The Windows™ SQL Server label may differ depending on the CD

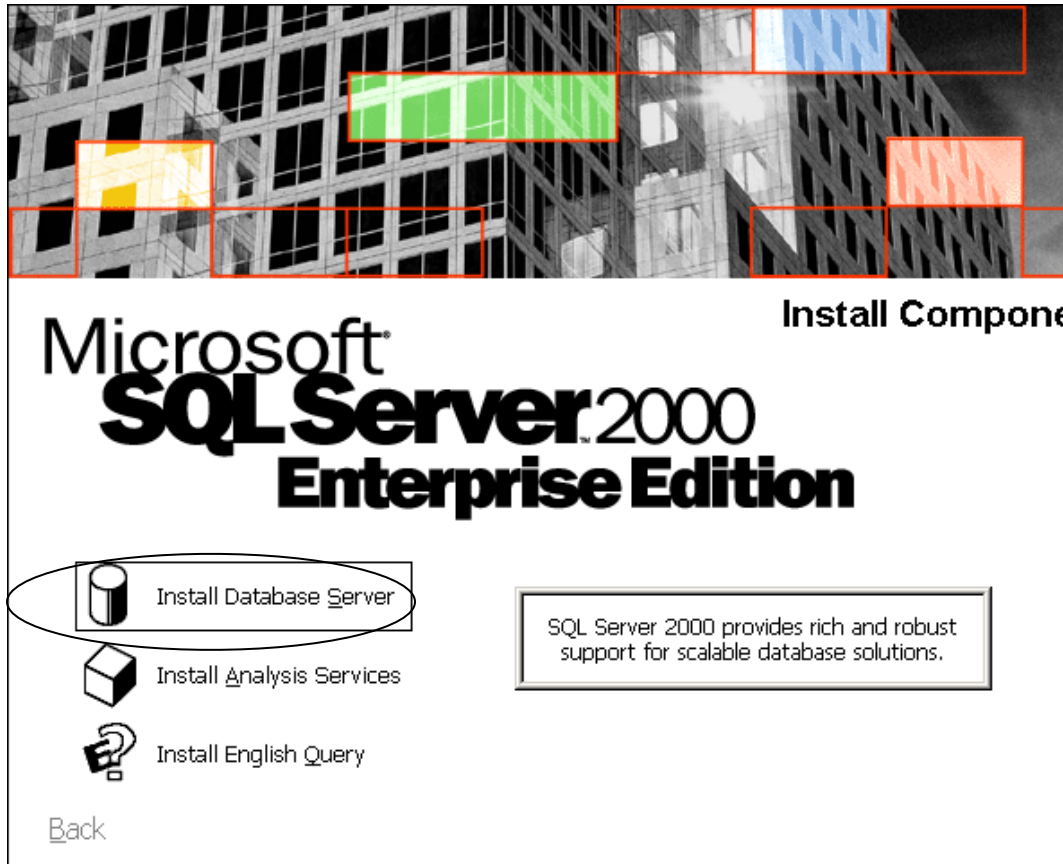
3. Press the CD-ROM drive in the Explorer window (labeled SQL2000_Ent).
4. Double-click on the **Autorun** icon.



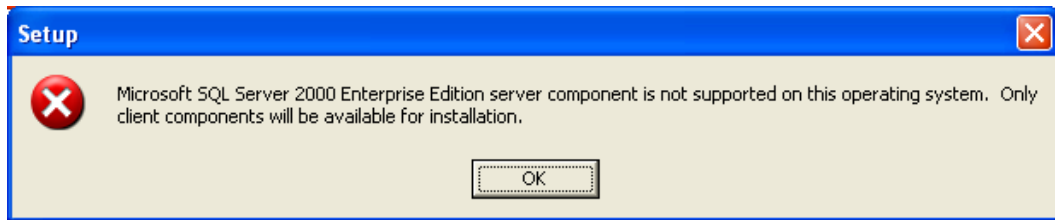
5. At the **Microsoft SQL Server 2000 Enterprise Edition** screen, press the **SQL Server 2000 Components** button.



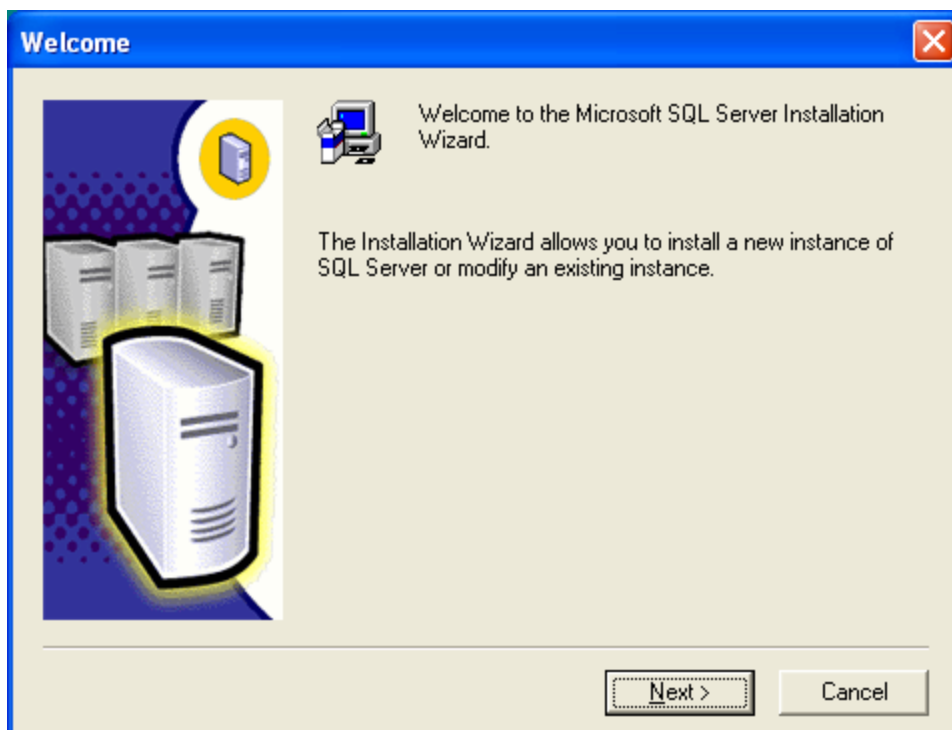
- At the **Microsoft SQL Server 2000 – Enterprise Edition – Install Components** screen, press the **Install Database Server** button.



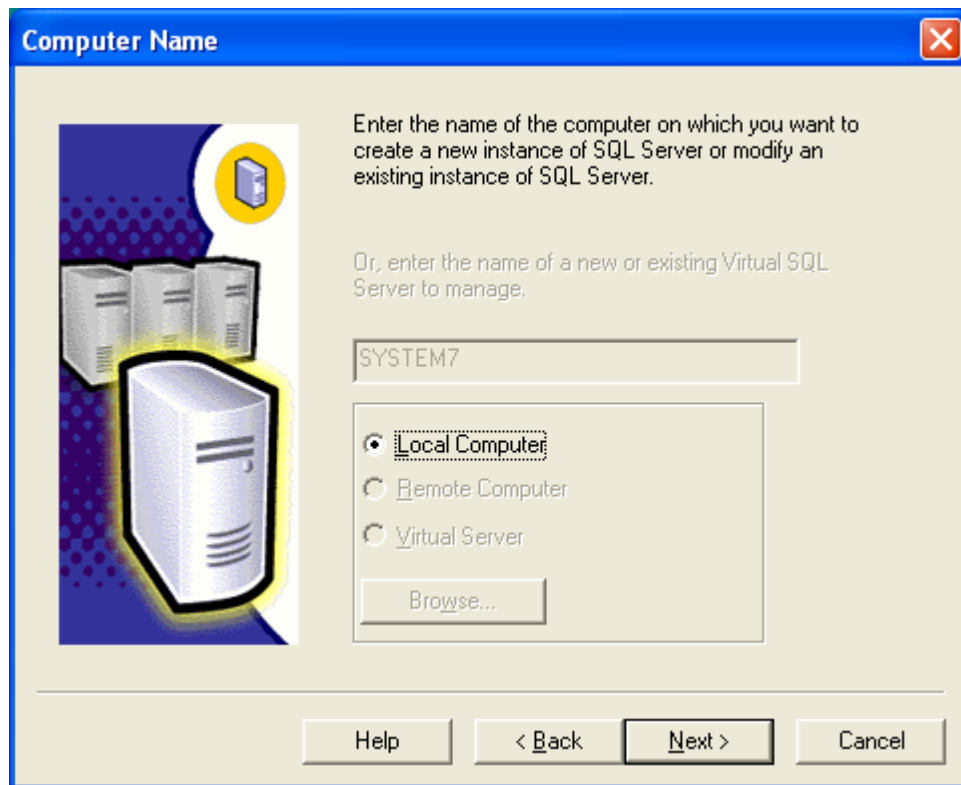
7. If the Operating System software is not Windows Server 2000 SP3 or higher or if Windows Server 2003 is installed you will see the **Setup** window. Press the **OK** button.



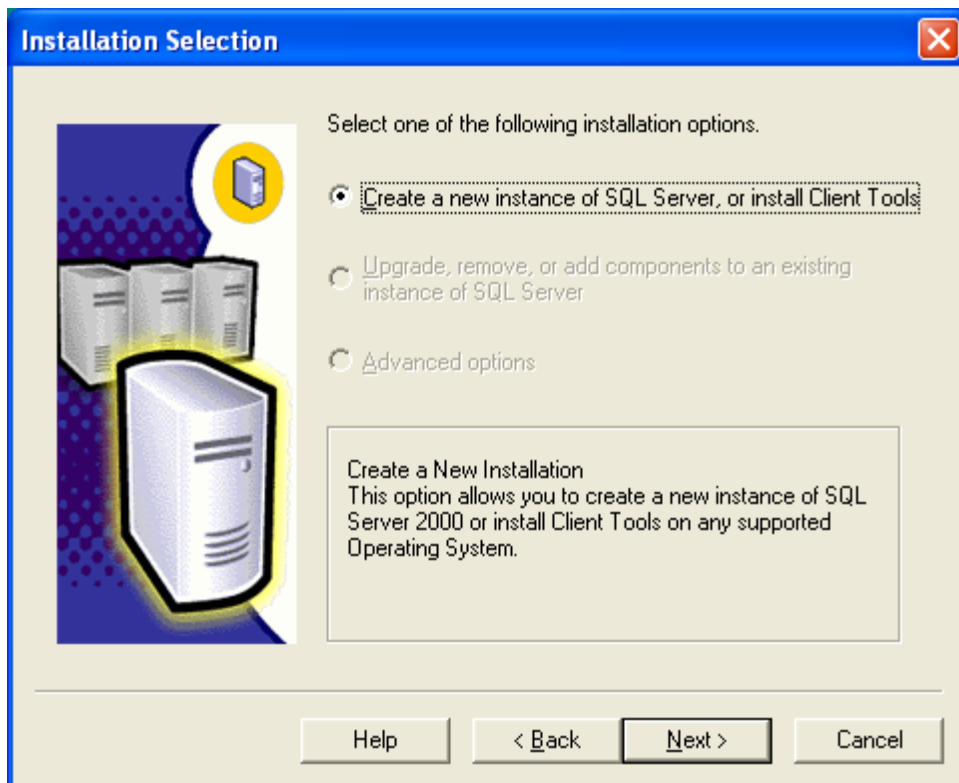
8. You will be brought to the **Welcome** window to the **Microsoft SQL Server Installation Wizard**. Press the **Next** button.



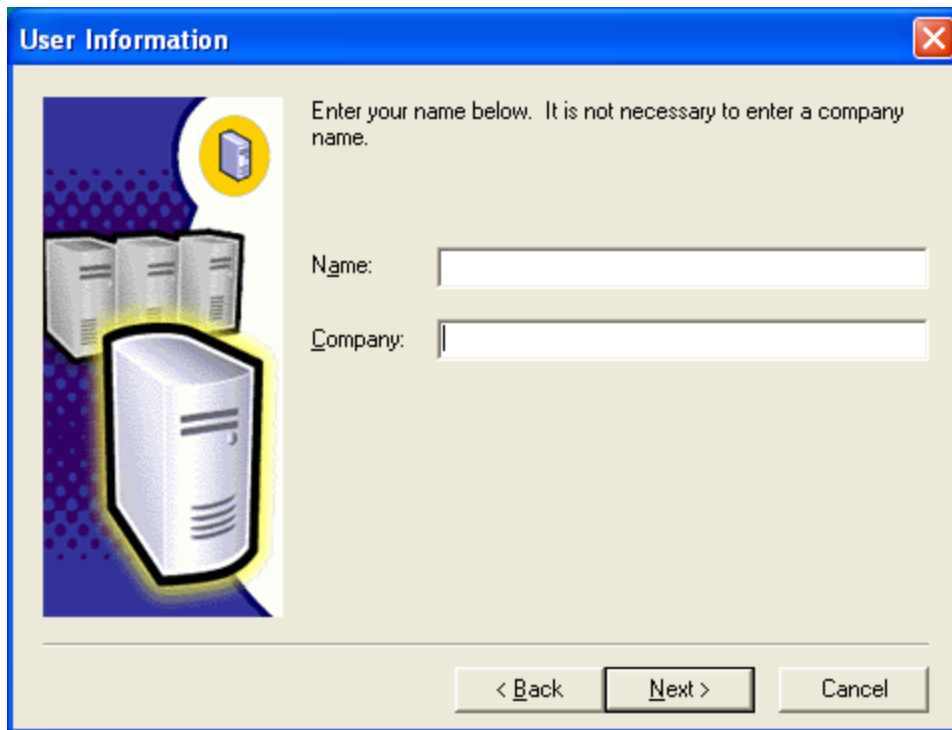
9. You will be brought to the **Computer Name** window. Since you are installing SQL 2000 Client, the **Local Computer** option will be the only selection. Press the **Next** button.



10. You will be brought to the **Installation Selection** window. The **"Create a new instance of SQL Server, or install Client Tools"** will be the only option available. Press the **Next** button.

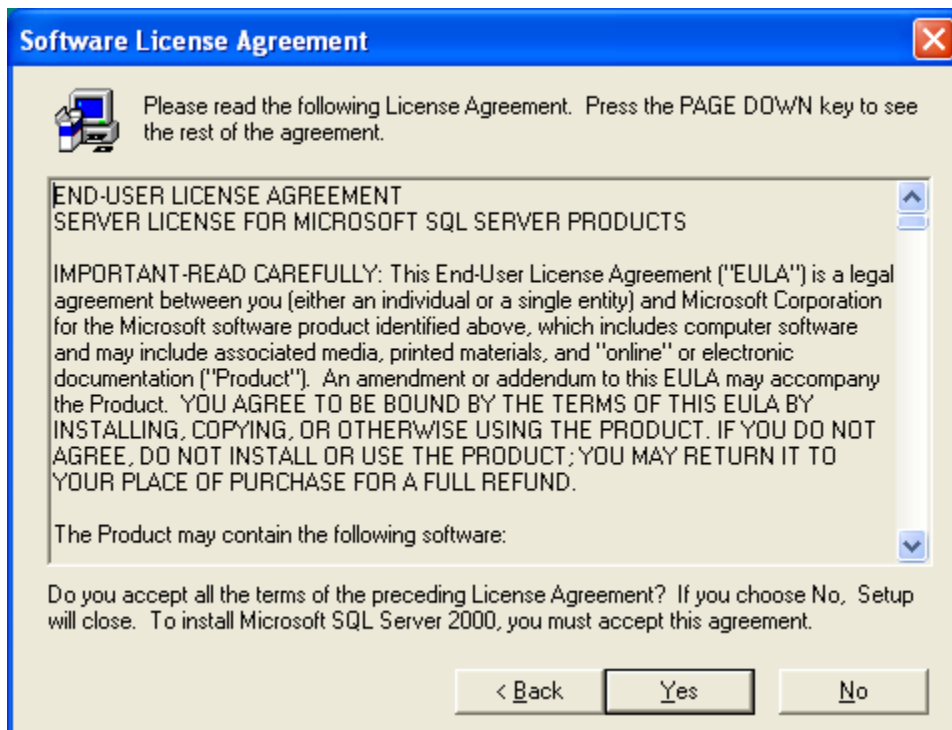


11. You will be brought to the **User Information** window. Enter the computer **Name** and **Company** for your system. Press the **Next** button.



The **User Information** dialog box features a blue title bar with a close button. On the left, there is an illustration of server hardware. The main area contains the instruction: "Enter your name below. It is not necessary to enter a company name." Below this are two text input fields labeled "Name:" and "Company:". At the bottom, there are three buttons: "< Back", "Next >", and "Cancel".

12. You will be brought to the **Software License Agreement**. After reading the legal agreement, press the **Yes** button.



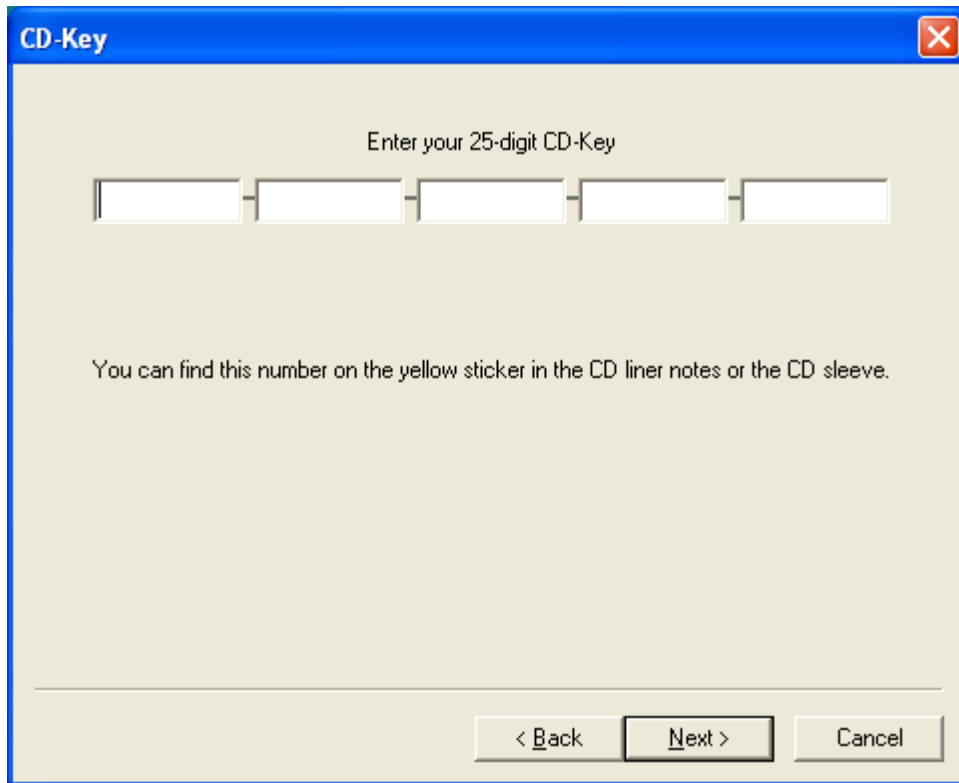
The **Software License Agreement** dialog box has a blue title bar with a close button. It includes a small computer icon and the text: "Please read the following License Agreement. Press the PAGE DOWN key to see the rest of the agreement." A scrollable text area contains the following text:
END-USER LICENSE AGREEMENT
SERVER LICENSE FOR MICROSOFT SQL SERVER PRODUCTS

IMPORTANT-READ CAREFULLY: This End-User License Agreement ("EULA") is a legal agreement between you (either an individual or a single entity) and Microsoft Corporation for the Microsoft software product identified above, which includes computer software and may include associated media, printed materials, and "online" or electronic documentation ("Product"). An amendment or addendum to this EULA may accompany the Product. YOU AGREE TO BE BOUND BY THE TERMS OF THIS EULA BY INSTALLING, COPYING, OR OTHERWISE USING THE PRODUCT. IF YOU DO NOT AGREE, DO NOT INSTALL OR USE THE PRODUCT; YOU MAY RETURN IT TO YOUR PLACE OF PURCHASE FOR A FULL REFUND.

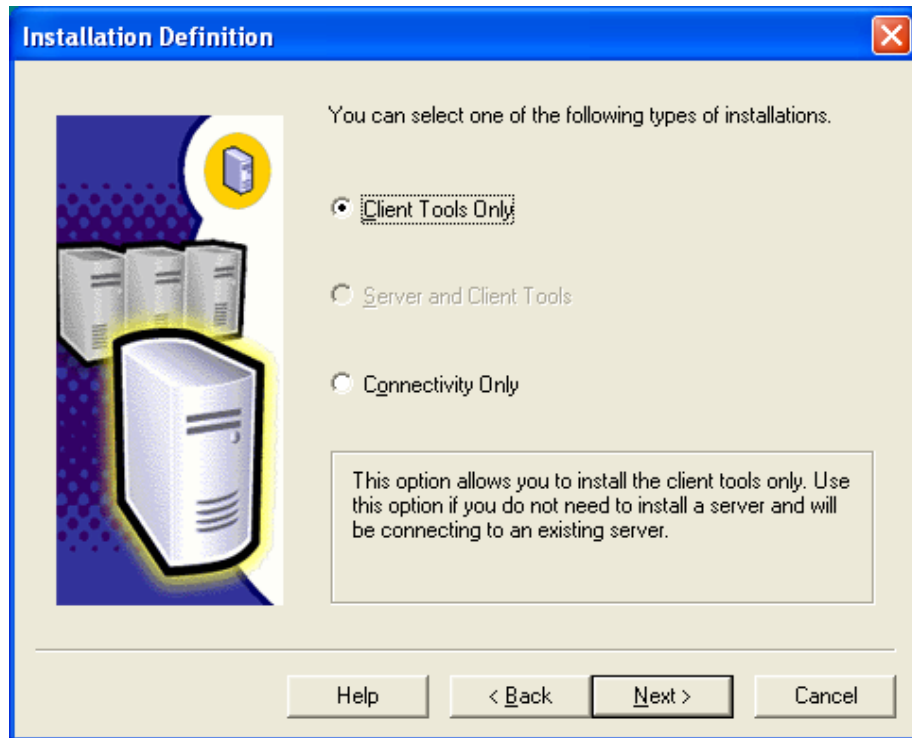
The Product may contain the following software:

Do you accept all the terms of the preceding License Agreement? If you choose No, Setup will close. To install Microsoft SQL Server 2000, you must accept this agreement.
At the bottom, there are three buttons: "< Back", "Yes", and "No".

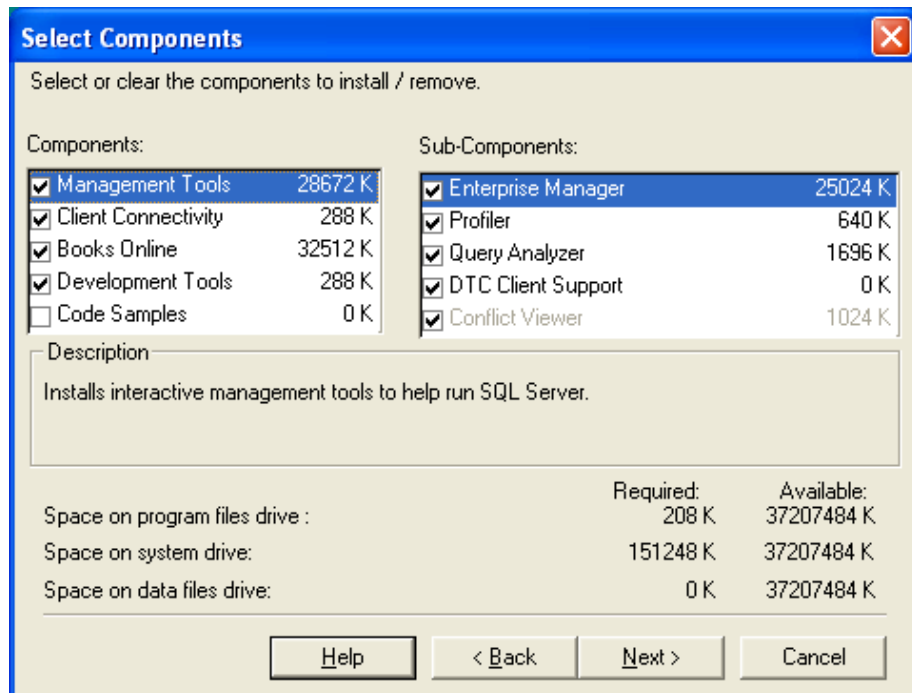
13. You will be brought to the CD-Key window. Enter the 25 digit CD-Key. Click on the **Next** button.



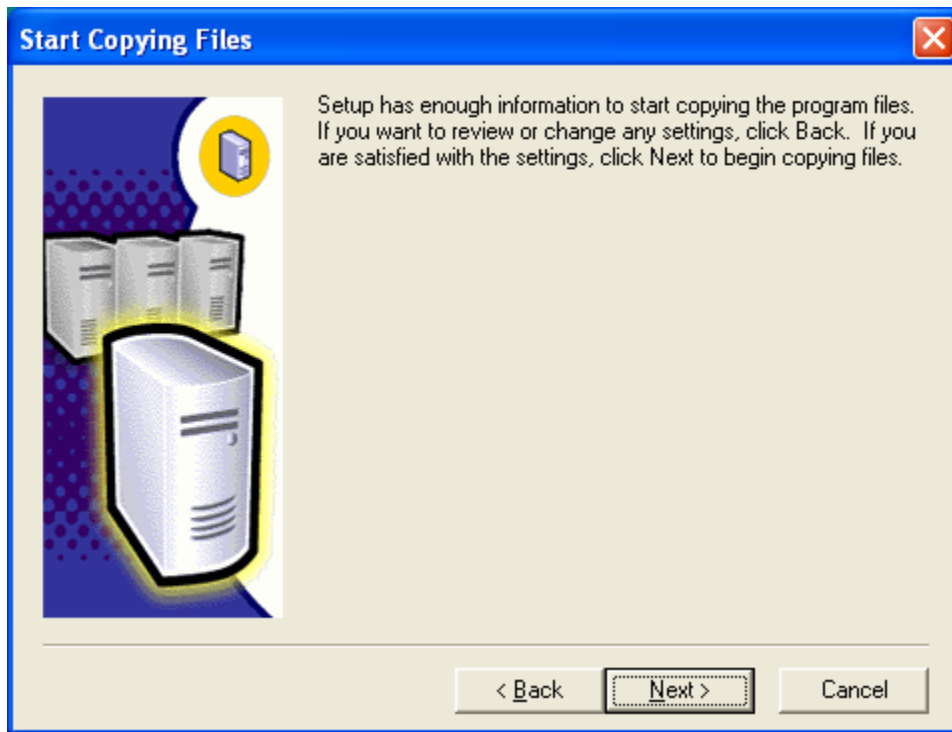
14. You will be brought to the **Installation Definition** window. Choose the "**Client Tools Only**" and then press the **Next** button.



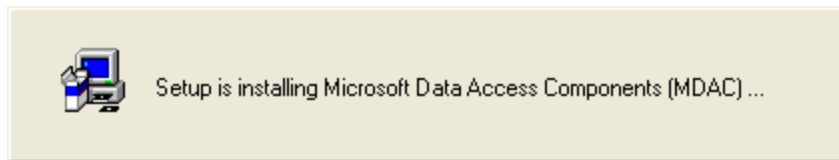
15. You will be brought to the **Select Components** window– press on the **Next** button for default values.



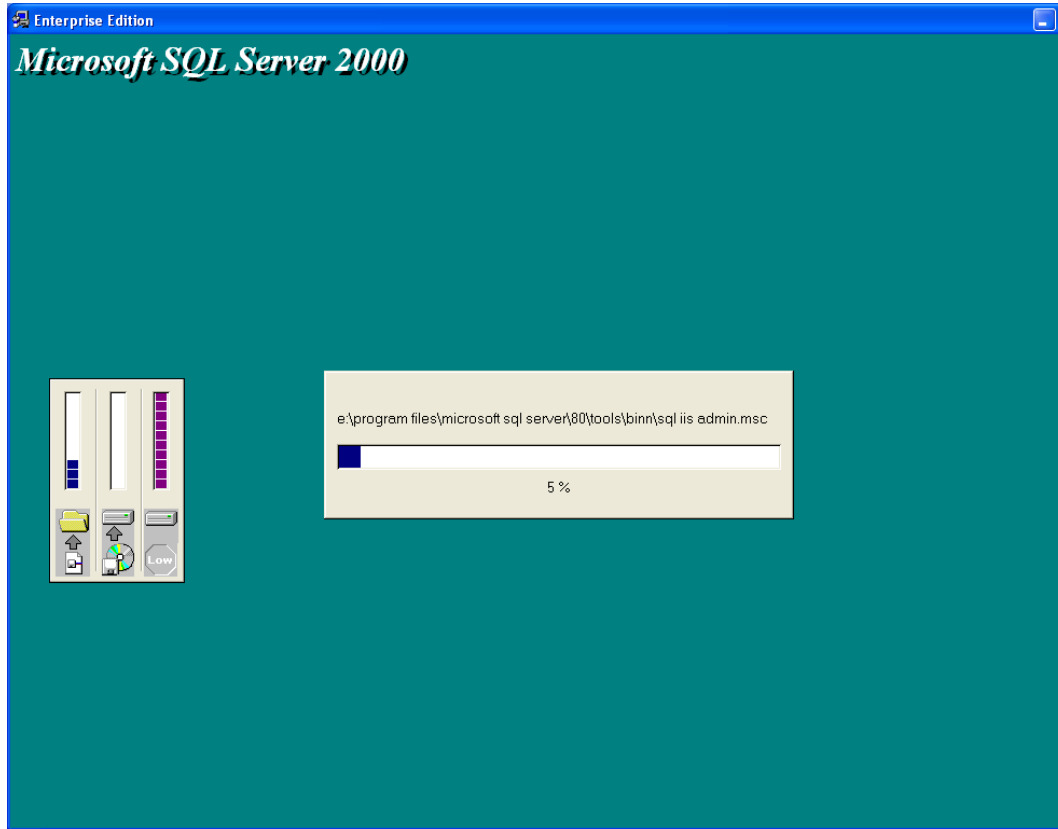
16. At the "Start Copying Files" window, press the **Next** button.



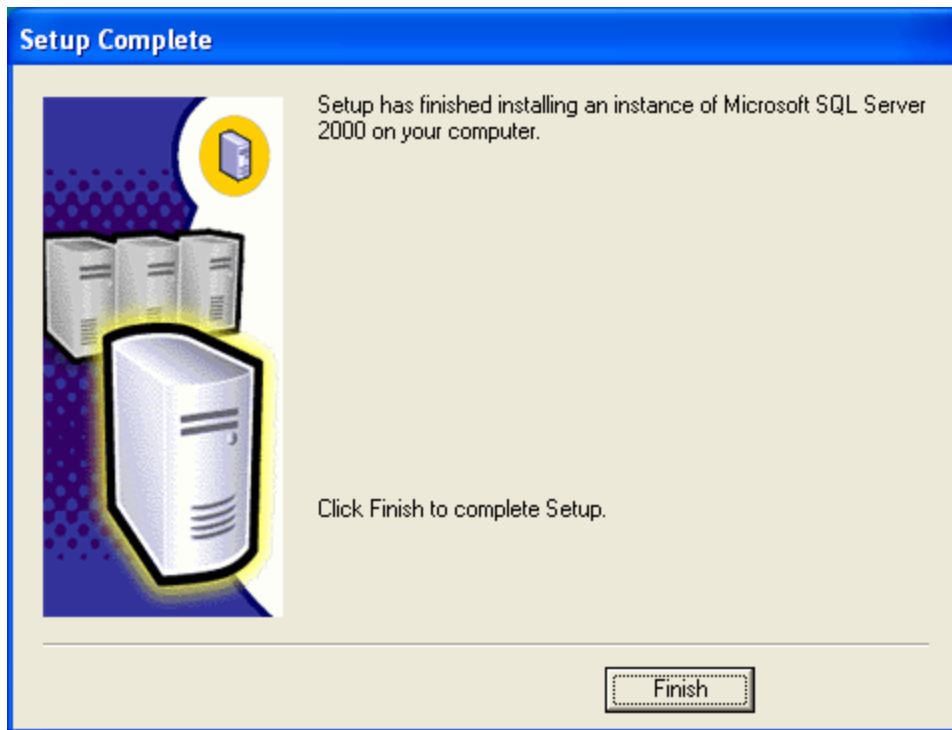
17. The system will display this window when loading the system.



18. Microsoft SQL Server 2000 progress screen will display.



19. Once the setup is done, you will see the following window. Press the **Finish** button to complete the installation.



This completes the installation of Microsoft SQL 2000 Client software.

**End of Manual
January 2007**