

# ITT Cannon NM/NMB Space/High Reliability D-Sub



## HIGH RELIABILITY RECTANGULAR CONNECTOR SUITED FOR SPACE

ITT Cannon has a long history of providing high performance D-Sub connectors for space applications (qualified by NASA/GFSC and the European Space Agency). Space/High Reliability D\*M and D\*MA connectors meet stringent tests for outgassing and residual magnetism and are suitable for use in space, medical, and high performance military/aerospace applications, including satellites, space vehicles and earthbound test equipment. D\*M and D\*MA connectors meet the performance and dimensional requirements of MIL-C-24308. The newest product group is High Density D\*MA crimp connectors. Available in styles with non-corroding gold-plated shells and high-quality silicone wire seals for crimp contacts, PEI-Genesis builds from stock and performs the magnetic testing for the entire NM/NMB line. We are proud to have PEI-Genesis built ITT connectors on 4 planets in the solar system!

### APPLICATIONS

- Medical Equipment
- Satellites
- Navigation Systems
- Avionics
- Hand Held Test Equipment
- Robotics
- Bar Code Scanners
- Data Transmission
- Sensors

### FEATURES

#### OPTIMIZATION OF SPACE FOR SPACE

NM/NMB Space/High Reliability D-Sub connectors are ideal for applications that require optimization of space. Qualified to NASA Goddard & ESA specifications, ITT Cannon NM/NMB Space/High Reliability D-Sub connectors meet the vigorous standards of space applications.

#### FLEXIBILITY

As the inventor of the D-Sub connector, ITT Cannon still has the broadest offering in the industry. ITT Cannon D-Subs offer thousands of styles, mounting options, contacts and plating - including Stainless Steel Shells.

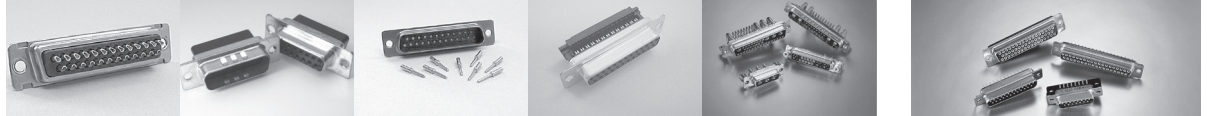
PCB contacts: Straight, Right Angle, US and European spacing

Shell platings/material: Gold-plated, Machined Aluminum, Brass, Stainless Steel

Insert arrangements: Standard density and high density

Please view the specifications for the various shell and contact platings available.

FEATURES



CANNON D-SUB PREFIX	D*	D*A	D*U	D*SF	D*M	D*M	D*MA
D-SUB FAMILY	ORIGINAL D	COMMERCIAL D	BURGUN- D	FLAT CABLE IDC D	COMBO D	MARK I	MARK II
<b>TERMINATION</b>							
SOLDER CUP	X	-	-	-	X	X	-
CRIMP AND INSERT	-	X	X	-	X	-	X
STRAIGHT PC	X	-	X	-	X	X	-
RIGHT ANGLE PC	X	-	X	-	X	X	-
WIRE WRAP	X	-	-	-	X	X	-
IDC	-	-	-	X	-	-	-
PRESS FIT	-	-	-	-	-	-	-
PRE-WIRED	-	-	-	-	-	-	-
<b>CONTACT STYLE</b>							
MACHINED	X	-	X	-	X	X	X
STAMPED & FORMED	X	X	X	X	++H	-	X
COMBO	-	X	-	-	X	-	X
HIGH DENSITY	-	-	-	-	-	-	X
DOUBLE DENSITY	-	-	-	-	-	-	-
MICRO (SUPER HIGH DENSITY)	-	-	-	-	-	-	-
<b>TECHNICAL SPECIFICATION</b>							
SHELL	STEEL	STEEL	STEEL	STEEL	STEEL	STEEL	STEEL
PLATING	TIN	TIN	TIN	TIN	TIN	TIN/CAD	TIN/CAD
INSULATOR	THERMO PLASTIC, UL94V0	THERMO PLASTIC, UL94V0	THERMO PLASTIC, UL94V0	THERMO PLASTIC, UL94V0	THERMO PLASTIC, UL94V0	THERMO PLASTIC, UL94V0	THERMO PLASTIC, UL94V0
CONTACT	COPPER ALLOY	COPPER ALLOY	COPPER ALLOY	COPPER ALLOY	COPPER ALLOY	COPPER ALLOY	COPPER ALLOY
PLATING	GOLD OVER NICKEL	GOLD OVER NICKEL	GOLD OVER NICKEL	GOLD OVER NICKEL	GOLD OVER NICKEL	GOLD OVER NICKEL	GOLD OVER NICKEL
CURRENT IN AMPS	5	5†	5	1	7.5†	7.5	7.5
TEMPERATURE	-55°C TO 125°C	-55°C TO 105°C	-55°C TO 105°C	-55°C TO 105°C	-55°C TO 125°C	-55°C TO 125°C	-55°C TO 125°C
TEST VOLTAGE AT SEA LEVEL	1250 VAC	500 VAC	1000 VAC	750 VAC	1250 VAC SIGNAL 1000 VAC COAX/ HIGH POWER 2800 VAC HIGH VOLTAGE	1000 VAC	1200 VAC
CONTACT RESISTANCE MAX.	10 MILLIOHMS	15 MILLIOHMS	7.34 MILLIOHMS	-	-	7.34 MILLIOHMS	7.34 MILLIOHMS
AVAILABLE PC FOOT PRINTS	.283-.318 . .454-.489 9.4-10.2MM	-	-	-	.283-.318 .454-.489 9.4-10.2MM	.283-.318 .454-.489 9.4-10.2MM	-
QUALIFICATIONS	-	-	-	-	-	M24308	M24308

† For signal contacts

++Up to 40 amp on power 5 amp in coax and high voltage

All dimensions in inches, unless otherwise stated.

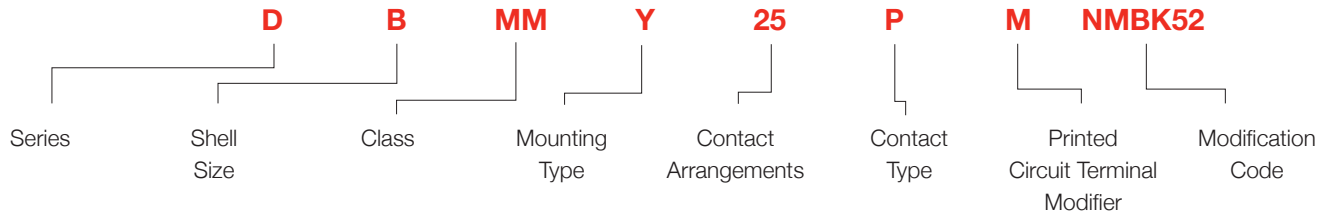
# FEATURES



CANNON D-SUB PREFIX	D*NG	D*W	D*M* NM*	ZD*	ZED*	D*JK D*JT	2D*
D-SUB FAMILY	PRESS FIT D	DISCRETE WIRE IDC	SPACE D	LOW COST COMMERCIAL D		FILTER D	DOUBLE DENSITY
<b>TERMINATION</b>							
SOLDER CUP	-	-	X	-	-	X	-
CRIMP AND INSERT	-	-	X	X	-	-	X
STRAIGHT PC	-	-	X	X	-	X	X
RIGHT ANGLE PC	-	-	X	X	X	X	X
WIRE WRAP	-	-	X	-	-	-	-
IDC	-	X	-	-	-	-	-
PRESS FIT	X	-	-	-	-	-	-
PRE-WIRED	-	-	-	-	-	-	-
<b>CONTACT STYLE</b>							
MACHINED	-	-	X	-	-	X	-
STAMPED & FORMED	X	-	-	X	X	-	X
COMBO	-	-	X	-	-	-	-
HIGH DENSITY	-	-	X	X	X	-	-
DOUBLE DENSITY	-	-	-	-	-	X	-
MICRO (SUPER HIGH DENSITY)	-	-	-	-	-	-	X
<b>TECHNICAL SPECIFICATION</b>							
SHELL	STEEL	STEEL	ALUMINUM BRASS STEEL	STEEL	STEEL	STEEL	STEEL
PLATING	TIN	TIN	ZINC/CAD/GOLD	TIN	TIN	TIN	TIN/CAD/ZINC
INSULATOR	THERMO PLASTIC UL94V0	THERMO PLASTIC UL94V0	THERMO PLASTIC UL94V0	THERMO PLASTIC UL94V0	THERMO PLASTIC UL94V0	THERMO PLASTIC UL94V0	THERMO PLASTIC UL94V0
CONTACT	COPPER ALLOY	COPPER ALLOY	COPPER ALLOY	COPPER ALLOY	COPPER ALLOY	COPPER ALLOY	COPPER ALLOY
PLATING	GOLD OVER NICKEL	GOLD OVER NICKEL	GOLD OVER NICKEL	GOLD OVER NICKEL	GOLD OVER NICKEL	GOLD OVER NICKEL	GOLD OVER NICKEL
CURRENT IN AMPS	5	3	5	5	5	5	5
TEMPERATURE	-55°C TO 125°C	-55°C TO 125°C	-55°C TO 125°C	-55°C TO 105°C	-55°C TO 105°C	-55°C TO 125°C	-55°C TO 85°C
TEST VOLTAGE AT SEA LEVEL	1200 VAC	1000 VAC	1250 VAC SIGNAL 1000 VAC COAX/ HIGH POWER 2800 VAC HIGH VOLTAGE	1000 VAC	1000 VAC	250Vdc (100VDC WORKING)	1000 VAC
CONTACT RESISTANCE MAX.	10 MILLIOHMS	15 MILLIOHMS	7.34 MILLIOHMS	15 MILLIOHMS	10 MILLIOHMS	10 MILLIOHMS	9 MILLIOHMS
AVAILABLE PC FOOT PRINTS	-	-	-	283-.318 .454-.489 9.4-10.2MM	283-.318 .454-.489 9.4-10.2MM	-	-
QUALIFICATIONS	-	-	M24308 311P 340100101B	-	-	-	-

All dimensions in inches, unless otherwise stated.

## HOW TO ORDER



### EXPLANATION

#### SERIES

D - D-Sub

#### SHELL SIZE

SHELL SIZE	FITS CONTACTS	
	STANDARD (20)	HIGH DENSITY (22) MA CLASS ONLY
E	9	15
A	15	26
B	25	44
C	37	62
D	50	78

#### CLASS

- M - One piece insulator - commercial - solder
- MM - One piece insulator - materials, finishes, and inspection in accordance with MIL-DTL-24308 where applicable - solder
- MA - Little Caesar rear release contact retention assembly - Crimp
- MAM - Little Caesar rear release contact retention assembly - materials, finishes, and inspection in accordance with MIL-DTL-24308 where applicable - Crimp

#### MOUNTING TYPE

- Omit - Standard 0.120" diameter mounting hole
- Y - Dual float mount for both front and rear panel mounting

#### CONTACT TYPE

- P - Pin
- S - Socket

### CONTACT ARRANGEMENTS

STANDARD	SHELL SIZE	CONTACTS
	STANDARD (20)	
	E	9
	A	15
	B	25
	C	37
	D	50

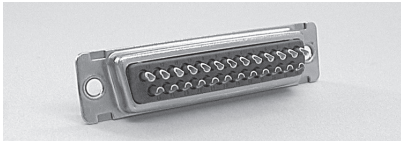
HIGH DENSITY	SHELL SIZE	CONTACTS
	HIGH DENSITY (22) MA CLASS ONLY	
	E	15
	A	26
	B	44
	C	62
	D	78

### MODIFICATION CODE

(See Cannon Deviation book for more complete listing of modifications)

- F216 - Machined aluminum shells
- F225 - Stainless Steel Shells 303 grade non-magnetic
- K52 - 50 micro in. over soft gold strike over 100 micro in. copper
- K128 - K52 plating on F216 shells
- NM - Residual magnetism < 20K gamma
- NMB - Residual magnetism < 200 gamma
- NMBK52 - Brass shells, 1,27 m (50 micro in.) Au plating
- NMBK128 - Aluminum shell, 27 m (50 micro in.) Au/Ni plating
- NMBK128K143 - 90° PCB, Aluminum Shell with blind mounting holes, 1,27 m (50 micro in.) Au over Ni plating

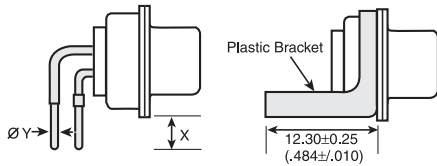
PRINTED CIRCUIT TERMINAL MODIFIER



**STRAIGHT PC CONTACTS**

CODE	X +/- .027 (.69)	Y
B	.127 (3.22)	.040 (1.02)
E	.127 (3.22)	.030 (0.76)
H	.158 (4.01)	.040 (1.02)
M+	.158 (4.01)	.030 (0.76)
X	.183 (4.65)	.040 (1.02)
Z	.183 (4.65)	.030 (0.76)
N	.198 (5.03)	.030 (0.76)
Y	.186 (4.65)	.025 (0.64)
V	.197 (5.00)	.030 (0.76)
OL3	.185 (4.70)	.023(0.60)
OL4	.212 (5.40)	.023(0.60)

+ PCB contacts for high density contact arrangement, MA class only, special.



**RIGHT ANGLE WITH BRACKET**

CODE	X +/- .027 (.69)	Y
A	.127 (3.22)	.040 (1.02)
D+	.127 (3.22)	.030 (0.76)
G	.158 (4.01)	.040 (1.02)
L	.158 (4.01)	.030 (0.76)
S	.183 (4.65)	.030 (0.76)
W	.183 (4.65)	.040 (1.02)
T*	.166 (4.22)	.030 (0.76)
1A7N	.157 (4.00) 4-40 thread	.024(0.60)
1A9N	.157 (4.00) M3 thread	.024(0.60)

\*plastic bracket

+ PCB contacts for high density contact arrangement, MA class only, special.

**RIGHT ANGLE WITHOUT BRACKET**



CODE	X +/- .027 (.69)	Y
C	.127 (3.22)	.040 (1.02)
F	.127 (3.22)	.030 (0.76)
K	.158 (4.01)	.040 (1.02)
P+	.158 (4.01)	.030 (0.76)
R+	.183 (4.65)	.030 (0.76)
J	.166 (4.22)	.030 (0.76)
1A0N	.197(5.00)	.024(0.60)

+ PCB contacts for high density contact arrangement, MA class only, special.  
All dimensions in inches (millimeters in parentheses)

**D\*MA/D\*MAM FOR STANDARD INSERTS - SPACE GRADE**

PIN CONTACT - 50 MICRO IN, GOLD PLATING	WIRE SIZE AWG	WIRE STRIP LENGTH	CRIMP TOOL	LOCATOR	PLASTIC INSERTION/EXTRACTION TOOL	PLASTIC EXTRACTION	METAL INSERTION TOOL	METAL EXTRACTION TOOL
330-5291-037	20, 22, 24	0.175 (4.45)	M22520/2-01	M22520/2-08	CIET-20HD	CET-20-11	DAK145	DRK145
330-5291-055	18, 20	0.175 (4.45)	M22520/2-01	K250	CIET-20HD	CET-20-11	DAK145	DRK145
330-5291-050	26, 28, 30	0.175 (4.45)	M22520/1-01	L3198-20HD	CIET-20HD	CET-20-11	DAK145	DRK145

SOCKET CONTACT - 50 MICRO IN, GOLD PLATING	WIRE SIZE AWG	WIRE STRIP LENGTH	CRIMP TOOL	LOCATOR	PLASTIC INSERTION/EXTRACTION TOOL	PLASTIC EXTRACTION	METAL INSERTION TOOL	METAL EXTRACTION TOOL
031-1007-052	20, 22, 24	0.175 (4.45)	M22520/2-01	M22520/2-08	CIET-20HD	CET-20-11	DAK145	DRK145
031-1007-054	18, 20	0.175 (4.45)	M22520/2-01	K250	CIET-20HD	CET-20-11	DAK145	DRK145
031-1007-048	26, 28, 30	0.175 (4.45)	M22520/2-01	K13	CIET-20HD	CET-20-11	DAK145	DRK145

**D\*MA/D\*MAM FOR HIGH DENSITY INSERTS - SPACE GRADE**

	CONTACT PART NUMBER 50 MICRO IN, GOLD PLATING	WIRE SIZE AWG	WIRE STRIP LENGTH	CRIMP TOOL	LOCATOR	PLASTIC INSERTION/EXTRACTION TOOL	METAL INSERTION TOOL	METAL EXTRACTION TOOL
Pin	030-2042-000	22, 24, 26, 28	.125 (3.18)	M22520/2-01	M22520/2-06	M81969/14-01	MS27495A22M	MS27495R22M
Socket	031-1147-002	22, 24, 26, 28	.125 (3.18)	M22520/2-01	M22520/2-07	M81969/14-01	MS27495A22M	MS27495R22M

All dimensions in inches (millimeters in parentheses)

NASA/GSFC CROSS REFERENCE

NASA/GSFC PART NUMBER	ITT CANNON PART NUMBER	NASA/GSFC PART NUMBER	ITT CANNON PART NUMBER	NASA/GSFC PART NUMBER	ITT CANNON PART NUMBER
G08P1 G08S1 S-311-P-4/6GCP1 S-311-P-4/6GCP2	030-2042-002 031-1147-002 DM53740-17 DM53740-15	311-P-10-1S-B-12 311-P-10-1S-B-15 311-P-10-10P-B-12 311-P-10-10P-B-15	DEM9SNMB77 DEM-9S-NMB-76 DBM5W5PNMB77 DBM-5W5P-NMB-76	311-P-10-23S-B-15 311-P-10-24P-B-12 311-P-10-3S-B-12 311-P-10-3P-B-15	DDM36W4SNMB76 DDM43W2P-NMB-77 DBM25PNMB77 DBM25PNMB76
S-311-P-4/6GCP3 S-311-P-4/6GCP4 S-311-P-4/6GCRP1 S-311-P-4/6GCRP2	DM53740-16 DM53740-18 DM53741-12 DM53741-11	311-P-10-10S-B-12 311-P-10-10S-B-15 311-P-10-11P-B-12 311-P-10-11S-B-12	DBM-5W5S-NMB-77 DBM-5W5S-NMB-76 DBM-9W4P-NMB-77 DBM-9W4S-NMB-77	311-P-10-3S-B-12 311-P-10-3S-B-15 311-P-10-4P-B-12 311-P-10-4P-B-15	DBM25PNMB77 DBM-25S-NMB-76 DCM37PNMB77 DCM37PNMB76
S-311-P-4/6GCRP3 S-311-P-4/6GCRP4 S-311-P-4/6GCRS1 S-311-P-4/6GCRS2	DM53741-10 DM53741-13 DM53743-18 DM53743-16	311-P-10-12P-B-12 311-P-10-12P-B-15 311-P-10-12S-B-12 311-P-10-12S-B-15	DBM13W3P-NMB-77 DBM-13W3P-NMB-76 DBM-13W3S-NMB-77 DBM-13W3S-NMB-76	311-P-10-4S-B-12 311-P-10-4S-B-15 311-P-10-5P-B-12 311-P-10-5P-B-15	DCM37SNMB77 DCM-37S-NMB-76 DDM50PNMB77 DDM50PNMB76
S-311-P-4/6GCRS3 S-311-P-4/6GCRS4 S-311-P-4/6GCS1 S-311-P-4/6GCS2	DM53743-17 DM53743-19 DM53742-18 DM53742-16	311-P-10-13P-B-12 311-P-10-13P-B-15 311-P-10-13S-B-12 311-P-10-14P-B-12	DBM17W2PNMB77 DBM-17W2P-NMB-76 DBM17W2SNMB77 DBM-21W1P-NMB-77	311-P-10-5S-B-12 311-P-10-5S-B-15 311-P-10-6P-B-12 311-P-10-6P-B-15	DDM50SNMB77 DDM50SNMB76 A-5W1P-NMB-77 DEM-5W1P-NMB-76
S-311-P-4/6GCS3 S-311-P-4/6GCS4 S-311-P-4/6GHP6 S-311-P-4/6GHRP6	DM53742-17 DM53742-19 DM51157-8 DM51157-5005	311-P-10-14P-B-15 311-P-10-14S-B-12 311-P-10-14S-B-15 311-P-10-15P-B-12	DBM-21W1P-NMB-76 DBM-21W1S-NMB-77 DBM-21W1S-NMB-76 DCM-8W8P-NMB-77	311-P-10-6S-B-12 311-P-10-7P-B-15 311-P-10-7S-B-12 311-P-10-7S-B-15	DEM-5W1S-NMB-77 DAM-3W3P-NMB-76 DAM3W3SNMB77 DAM3W3SNMB76
S-311-P-4/6GHRP6 S-311-P-4/6GHS6 311P409-1P-B-12 311P409-1P-B-15	DM51155-5005 DM51155-7 DEMA9PNMBK47FO DEMAK9PNMBK47FO	311-P-10-15P-B-15 311-P-10-15S-B-12 311-P-10-15S-B-15 311-P-10-16P-B-12	DCM8W8PNMB76 DCM-8W8S-NMB-77 DCM-8W8SNMB76 DCM-13W6P-NMB-77	311-P-10-8P-B-12 311-P-10-8P-B-15 311-P-10-8S-B-12 311-P-10-9P-B-12	DAM-7W2P-NMB-77 DAM-7W2P-NMB-76 DAM-7W2S-NMB-77 DAM-11W1P-NMB-77
311P409-1S-B-12 311P409-1S-B-15 311P409-2P-B-12 311P409-2P-B-15	DEMA9SNMBK47FO DEMAK9SNMBK47FO DAMA15PNMBK47FO DAMAK15PNMBK47FO	311-P-10-16P-B-15 311-P-10-16S-B-12 311-P-10-17P-B-12 311-P-10-17P-B-15	DCM-13W6P-NMB-76 DCM-13W6S-NMB-77 DCM17W5PNMB77 DCM-17W5P-NMB-76	311-P-10-9P-B-15 311-P-10-9S-B-12 311-P-10-9S-B-15 311-P-10B-1S-B-12	DAM-11W1P-NMB-76 DAM-11W1S-NMB-77 DAM-11W1S-NMB-76 DEMB9SNMB77
311P409-2S-B-12 311P409-2S-B-15 311P409-3P-B-12 311P409-3P-B-15	DAMA15SNMBK47FO DAMAK15SNMBK47FO DBMA25PNMBK47FO DBMAK25PNMBK47FO	311-P-10-17S-B-12 311-P-10-17S-B-15 311-P-10-18P-B-12 311-P-10-18P-B-15	DCM-17W5S-NMB-77 DCM-17W5S-NMB-76 DCM-21WA4P-NMB-77 DCM-21WA4P-NMB-76	311-P-10B-13S-B-15 311-P-10B-17S-B-15 311-P-10B-2S-B-12 311-P-10B-22S-B-15	DBMB-17W2S-NMB-76 DCMB-17W5S-NMB-76 DAMB15SNMB77 DDMB-24W7S-NMB-76
311P409-3S-B-12 311P409-3S-B-15 311P409-4P-B-12 311P409-4P-B-15	DBMA25SNMBK47FO DBMAK25SNMBK47FO DCMA37PNMBK47FO DCMAK37PNMBK47FO	311-P-10-18S-B-12 311-P-10-18S-B-15 311-P-10-19P-B-12 311-P-10-19S-B-12	DCM21WA4S-NMB-77 DCM21WA4S-NMB-76 DCM-21WA4P-NMB-77 DCM-21W4S-NMB-77	311-P-10B-3S-B-12 311-P-10B-3S-B-15 311-P-10B-4S-B-12 311-P-10B-5S-B-12	DBMB-25S-NMB-77 DBMB-25S-NMB-76 DCMB-37S-NMB-77 DDMB-50S-NMB-77
311P409-4S-B-12 311P409-4S-B-15 311P409-5P-B-12 311P409-5P-B-15	DCMA37SNMBK47FO DCMAK37SNMBK47FO DDMA50PNMBK47FO DDMAK50PNMBK47FO	311-P-10-2P-B-12 311-P-10-2P-B-15 311-P-10-2S-B-12 311-P-10-2S-B-15	DAM15PNMB77 DAM15PNMB76 DAM15SNMB77 DAM-15S-NMB-76	311-P-10B-5S-B-15 311-P-10B-6S-B-15 311-P-10B-8S-B-12 311-P-10B-8S-B-15	DDMB50S-NMB-76 DEMB-5W1S-NMB-76 DAMB-7W2S-NMB-77 DAMB-7W2S-NMB-76
311P409-5S-B-12 311P409-5S-B-15 S-311-P-4/10G10P1 S-311-P-4/10G10S1	DDMA50SNMBK47FO DDMAK50PNMBK47FO 330-5291-081-02 031-1007-052-05	311-P-10-20P-B-12 311-P-10-20S-B-12 311-P-10-22P-B-12 311-P-10-22P-B-15	DCM-25W3P-NMB-77 DCM-25W36-NMB-77 DDM-24W7P-NMB-77 DDM24W7PNMB76	311-P-10B-9S-B-12	DAMB-11W1S-NMB-77
311-P-10-B-1S-B-15 311-P-10-B-4S-B-15 311-P-10-1P-B-12 311-P-10-1P-B-15	DEMB9S-NMB-76 DCMB37S-NMB-76 DEMPPNMB77 DEM-9P-NMB-76	311-P-10-22S-B-12 311-P-10-22S-B-15 311-P-10-23P-B-12 311-P-10-23S-B-12	DDM24W7SNMB77 DDM-24W7S-NMB-76 DDM-36W4P-NMB-77 DDM-36W4S-NMB-77		

ESA/SCC CROSS REFERENCE CHART

ESA/SCC CROSS REFERENCE\*

ESC-SCC PART NUMBER	ITT CANNON PART NUMBER	ESC-SCC PART NUMBER	ITT CANNON PART NUMBER	ESC-SCC PART NUMBER	ITT CANNON PART NUMBER
340100101B DEM5W1SNMB	DEM5W1SNMBK52	340100101B DAM3W3POL3NMB	DAM3W3POL3NMBK52	340100101B DCM13W6S1A7NNMB	DCM13W6S1A7NNMBK52
340100101B DAM3W3SNMB	DAM3W3SNMBK52	340100101B DAM7W2POL3NMB	DAM7W2POL3NMBK52	340100101B DCM17W5S1A7NNMB	DCM17W5S1A7NNMBK52
340100101B DAM7W2SNMB	DAM7W2SNMBK52	340100101B DAM11W1POL3NMB	DAM11W1POL3NMBK52	340100101B DCM21WA4S1A7NNMB	DCM21WA4S1A7NNMBK52
340100101B DAM11W1SNMB	DAM11W1SNMBK52	340100101B DBM9W4POL3NMB	DBM9W4POL3NMBK52	340100101B DCM25W3S1A7NNMB	DCM25W3S1A7NNMBK52
340100101B DBM5W5SNMB	DBM5W5SNMBK52	340100101B DBM13W3POL3NMB	DBM13W3POL3NMBK52	340100101B DCM27W2S1A7NNMB	DCM27W2S1A7NNMBK52
340100101B DBM9W4SNMB	DBM9W4SNMBK52	340100101B DBM17W2POL3NMB	DBM17W2POL3NMBK52	340100101B DDM24W7S1A7NNMB	DDM24W7S1A7NNMBK52
340100101B DBM13W3SNMB	DBM13W3SNMBK52	340100101B DBM21W1POL3NMB	DBM21W1POL3NMBK52	340100101B DDM36W4S1A7NNMB	DDM36W4S1A7NNMBK52
340100101B DBM17W2SNMB	DBM17W2SNMBK52	340100101B DCM13W6POL3NMB	DCM13W6POL3NMBK52	340100101B DDM43W2S1A7NNMB	DDM43W2S1A7NNMBK52
340100101B DBM21W1SNMB	DBM21W1SNMBK52	340100101B DCM17W5POL3NMB	DCM17W5POL3NMBK52	340100101B DDM47W1S1A7NNMB	DDM47W1S1A7NNMBK52
340100101B DCM8W8SNMB	DCM8W8SNMBK52	340100101B DCM21WA4POL3NMB	DCM21WA4POL3NMBK52	340100101B DEM5W1P1A7NNMB	DEM5W1P1A7NNMBK52
340100101B DCM13W6SNMB	DCM13W6SNMBK52	340100101B DCM25W3POL3NMB	DCM25W3POL3NMBK52	340100101B DAM7W2P1A7NNMB	DAM7W2P1A7NNMBK52
340100101B DCM17W5SNMB	DCM17W5SNMBK52	340100101B DCM27W2POL3NMB	DCM27W2POL3NMBK52	340100101B DAM11W1P1A7NNMB	DAM11W1P1A7NNMBK52
340100101B DCM21WA4SNMB	DCM21WA4SNMBK52	340100101B DDM24W7POL3NMB	DDM24W7POL3NMBK52	340100101B DBM9W4P1A7NNMB	DBM9W4P1A7NNMBK52
340100101B DCM25W3SNMB	DCM25W3SNMBK52	340100101B DDM36W4POL3NMB	DDM36W4POL3NMBK52	340100101B DBM13W3P1A7NNMB	DBM13W3P1A7NNMBK52
340100101B DCM27W2SNMB	DCM27W2SNMBK52	340100101B DDM43W2POL3NMB	DDM43W2POL3NMBK52	340100101B DBM17W2P1A7NNMB	DBM17W2P1A7NNMBK52
340100101B DDM24W7SNMB	DDM24W7SNMBK52	340100101B DDM47W1POL3NMB	DDM47W1POL3NMBK52	340100101B DBM21W1P1A7NNMB	DBM21W1P1A7NNMBK52
340100101B DDM36W4SNMB	DDM36W4SNMBK52	340100101B DEM5W1S1AONNMB	DEM5W1S1AONNMBK52	340100101B DCM13W6P1A7NNMB	DCM13W6P1A7NNMBK52
340100101B DDM43W2SNMB	DDM43W2SNMBK52	340100101B DAM7W2S1AONNMB	DAM7W2S1AONNMBK52	340100101B DCM17W5P1A7NNMB	DCM17W5P1A7NNMBK52
340100101B DDM47W1SNMB	DDM47W1SNMBK52	340100101B DAM11W1S1AONNMB	DAM11W1S1AONNMBK52	340100101B DCM21WA4P1A7NNMB	DCM21WA4P1A7NNMBK52
340100101B DEM5W1PNMB	DEM5W1PNMBK52	340100101B DBM9W4S1AONNMB	DBM9W4S1AONNMBK52	340100101B DCM25W3P1A7NNMB	DCM25W3P1A7NNMBK52
340100101B DAM3W3PNMB	DAM3W3PNMBK52	340100101B DBM13W3S1AONNMB	DBM13W3S1AONNMBK52	340100101B DCM27W2P1A7NNMB	DCM27W2P1A7NNMBK52
340100101B DAM7W2PNMB	DAM7W2PNMBK52	340100101B DBM17W2S1AONNMB	DBM17W2S1AONNMBK52	340100101B DDM24W7P1A7NNMB	DDM24W7P1A7NNMBK52
340100101B DAM11W1PNMB	DAM11W1PNMBK52	340100101B DBM21W1S1AONNMB	DBM21W1S1AONNMBK52	340100101B DDM36W4P1A7NNMB	DDM36W4P1A7NNMBK52
340100101B DBM5W5PNMB	DBM5W5PNMBK52	340100101B DCM13W6S1AONNMB	DCM13W6S1AONNMBK52	340100101B DDM43W2P1A7NNMB	DDM43W2P1A7NNMBK52
340100101B DBM9W4PNMB	DBM9W4PNMBK52	340100101B DCM17W5S1AONNMB	DCM17W5S1AONNMBK52	340100101B DDM47W1P1A7NNMB	DDM47W1P1A7NNMBK52
340100101B DBM13W3PNMB	DBM13W3PNMBK52	340100101B DCM21WA4S1AONNMB	DCM21WA4S1AONNMBK52	340100101B DEM5W1S1A9NNMB	DEM5W1S1A9NNMBK52
340100101B DBM17W2PNMB	DBM17W2PNMBK52	340100101B DCM25W3S1AONNMB	DCM25W3S1AONNMBK52	340100101B DAM7W2S1A9NNMB	DAM7W2S1A9NNMBK52
340100101B DBM21W1PNMB	DBM21W1PNMBK52	340100101B DCM27W2S1AONNMB	DCM27W2S1AONNMBK52	340100101B DAM11W1S1A9NNMB	DAM11W1S1A9NNMBK52
340100101B DCM8W8PNMB	DCM8W8PNMBK52	340100101B DDM24W7S1AONNMB	DDM24W7S1AONNMBK52	340100101B DBM9W4S1A9NNMB	DBM9W4S1A9NNMBK52
340100101B DCM13W6PNMB	DCM13W6PNMBK52	340100101B DDM36W4S1AONNMB	DDM36W4S1AONNMBK52	340100101B DBM13W3S1A9NNMB	DBM13W3S1A9NNMBK52
340100101B DCM17W5PNMB	DBM13W3S1AONNMBK52	340100101B DCM21WA4S1AONNMB	DCM21WA4S1AONNMBK52	340100101B DEM5W1S1A9NNMB	DEM5W1S1A9NNMBK52
340100101B DCM21WA4PNMB	DBM17W2S1AONNMBK52	340100101B DCM25W3S1AONNMB	DCM25W3S1AONNMBK52	340100101B DAM7W2S1A9NNMB	DAM7W2S1A9NNMBK52
340100101B DCM25W3PNMB	DBM21W1S1AONNMBK52	340100101B DCM27W2S1AONNMB	DCM27W2S1AONNMBK52	340100101B DAM11W1S1A9NNMB	DAM11W1S1A9NNMBK52
340100101B DCM27W2PNMB	DCM13W6S1AONNMBK52	340100101B DDM24W7S1AONNMB	DDM24W7S1AONNMBK52	340100101B DBM9W4S1A9NNMB	DBM9W4S1A9NNMBK52
340100101B DDM24W7PNMB	DCM17W5S1AONNMBK52	340100101B DDM36W4S1AONNMB	DDM36W4S1AONNMBK52	340100101B DBM13W3S1A9NNMB	DBM13W3S1A9NNMBK52
340100101B DAM11W1SOL3NMB	DAM11W1SOL3NMBK52	340100101B DCM17W5P1AONNMB	DCM17W5P1AONNMBK52	340100101B DDM47W1S1A9NNMB	DDM47W1S1A9NNMBK52
340100101B DBM9W4SOL3NMB	DBM9W4SOL3NMBK52	340100101B DCM21WA4P1AONNMB	DCM21WA4P1AONNMBK52	340100101B DEM5W1P1A9NNMB	DEM5W1P1A9NNMBK52
340100101B DBM13W3SOL3NMB	DBM13W3SOL3NMBK52	340100101B DCM25W3P1AONNMB	DCM25W3P1AONNMBK52	340100101B DAM7W2P1A9NNMB	DAM7W2P1A9NNMBK52
340100101B DBM17W2SOL3NMB	DBM17W2SOL3NMBK52	340100101B DCM27W2P1AONNMB	DCM27W2P1AONNMBK52	340100101B DAM11W1P1A9NNMB	DAM11W1P1A9NNMBK52
340100101B DBM21W1SOL3NMB	DBM21W1SOL3NMBK52	340100101B DDM24W7P1AONNMB	DDM24W7P1AONNMBK52	340100101B DBM9W4P1A9NNMB	DBM9W4P1A9NNMBK52
340100101B DCM13W6SOL3NMB	DCM13W6SOL3NMBK52	340100101B DDM43W4P1AONNMB	DDM43W4P1AONNMBK52	340100101B DBM13W3P1A9NNMB	DBM13W3P1A9NNMBK52
340100101BDCM17W5SOL3NMB	DCM17W5SOL3NMBK52	340100101B DDM43W2P1AONNMB	DDM43W2P1AONNMBK52	340100101B DBM17W2P1A9NNMB	DBM17W2P1A9NNMBK52
340100101BDCM21WA4SOL3NMB	DCM21WA4SOL3NMBK52	340100101B DDM47W1P1AONNMB	DDM47W1P1AONNMBK52	340100101B DBM21W1P1A9NNMB	DBM21W1P1A9NNMBK52
340100101B DCM25W3SOL3NMB	DCM25W3SOL3NMBK52	340100101B DEM5W1S1A7NNMB	DEM5W1S1A7NNMBK52	340100101B DCM13W6P1A9NNMB	DCM13W6P1A9NNMBK52
340100101B DCM27W2OL3NMB	DCM27W2OL3NMBK52	340100101B DAM7W2S1A7NNMB	DAM7W2S1A7NNMBK52	340100101B DCM17W5P1A9NNMB	DCM17W5P1A9NNMBK52
340100101B DDM24W7SOL3NMB	DDM24W7SOL3NMBK52	340100101B DAM11W1S1A7NNMB	DAM11W1S1A7NNMBK52	340100101B DCM21WA4P1A9NNMB	DCM21WA4P1A9NNMBK52
340100101B DDM36W4SOL3NMB	DDM36W4SOL3NMBK52	340100101B DBM9W4S1A7NNMB	DBM9W4S1A7NNMBK52	340100101B DCM25W3P1A9NNMB	DCM25W3P1A9NNMBK52
340100101B DDM43W2SOL3NMB	DDM43W2SOL3NMBK52	340100101B DBM13W3S1A7NNMB	DBM13W3S1A7NNMBK52	340100101B DCM27W2P1A9NNMB	DCM27W2P1A9NNMBK52
340100101B DDM47W1SOL3NMB	DDM47W1SOL3NMBK52	340100101B DBM17W2S1A7NNMB	DBM17W2S1A7NNMBK52	340100101B DDM24W7P1A9NNMB	DDM24W7P1A9NNMBK52
340100101B DEM5W1POL3NMB	DEM5W1POL3NMBK52	340100101B DBM21W1S1A7NNMB	DBM21W1S1A7NNMBK52	340100101B DDM36W4P1A9NNMB	DDM36W4P1A9NNMBK52

\*NOTE: ESA Part Numbers are for reference only. Only order to ITT Cannon part number which meet or exceed the ESA requirements. (Not on ESA QPL)



ESA/SCC CROSS REFERENCE CHART

ITT CANNON NM/NMB SPACE/HIGH RELIABILITY D-SUB

ESA/SCC CROSS REFERENCE\*

ESC-SCC PART NUMBER	ITT CANNON PART NUMBER	ESC-SCC PART NUMBER	ITT CANNON PART NUMBER	ESC-SCC PART NUMBER	ITT CANNON PART NUMBER
340100101B DDM43W2P1A9NNMB 340100101B DDM47W1P1A9NNMB 340100101B DEM5W1SF179ANMB 340100101B DAM7W2SF179ANMB 340100101B DAM11W1SF179ANMB	DDM43W2P1A9NNMBK52 DDM47W1P1A9NNMBK52 DEM5W1SF179ANMBK52 DAM7W2SF179ANMBK52 DAM11W1SF179ANMBK52	340100101B DBM25P1AONNMB 340100101B DCM37P1AONNMB 340100101B DDM50P1AONNMB 340100101B DEM9S1A7NNMB 340100101B DAM15S1A7NNMB	DBM25P1AONNMBK52 DCM37P1AONNMBK52 DDM50P1AONNMBK52 DEM9S1A7NNMBK52 DAM15S1A7NNMBK52	340102232B 340102233B 340100501B 340100502B 340100503B	DC115386-100A DD115386-103A 030-8882-002 031-8944-000 030-8848-020
340100101B DBM9W4SF179ANMB 340100101B DBM13W3SF179ANMB 340100101B DBM17W2SF179ANMB 340100101B DBM21W1SF179ANMB 340100101B DCM13W6SF179ANMB	DBM9W4SF179ANMBK52 DBM13W3SF179ANMBK52 DBM17W2SF179ANMBK52 DBM21W1SF179ANMBK52 DCM13W6SF179ANMBK52	340100101B DBM25S1A7NNMB 340100101B DCM37S1A7NNMB 340100101B DDM50S1A7NNMB 340100101B DEM9P1A7NNMB 340100101B DAM15P1A7NNMB	DBM25S1A7NNMBK52 DCM37S1A7NNMBK52 DDM50S1A7NNMBK52 DEM9P1A7NNMBK52 DAM15P1A7NNMBK52	340100504B 340100505B 340100506B 340100507B 340100508B	031-8787-020 330-8782-001 031-8843-001 330-8944-000 031-8902-000
340100101B DCM17W5SF179ANMB 340100101B DCM21WA4SF179ANMB 340100101B DCM25W3SF179ANMB 340100101B DCM27W2SF179ANMB 340100101B DDM24W7SF179ANMB	DCM17W5SF179ANMBK52 DCM21WA4SF179ANMBK52 DCM25W3SF179ANMBK52 DCM27W2SF179ANMBK52 DDM24W7SF179ANMBK52	340100101B DBM25P1A7NNMB 340100101B DCM37P1A7NNMB 340100101B DDM50P1A7NNMB 340100101B DEM9S1A9NNMB 340100415B	DBM25P1A7NNMBK52 DCM37P1A7NNMBK52 DDM50P1A7NNMBK52 DEM9S1A9NNMBK52 DM115740-13	340100102B DEM*15PNMB0L3 340100102B DEM*15SNMB0L3 340100102B DAM*26PNMB0L3 340100102B DAM*16SNMB0L3 340100102B DBM*44PNMB0L3	DEMA*15PNMB0L3K52 DEMA*15SNMB0L3K52 DAMA*26PNMB0L3K52 DAMA*26SNMB0L3K52 DBMA*44PNMB0L3K52
340100101B DDM36W4SF179ANMB 340100101B DDM43W2SF179ANMB 340100101B DDM47W1SF179ANMB 340100101B DEM5W1PF179ANMB 340100101B DAM7W2PF179ANMB	DDM36W4SF179ANMBK52 DDM43W2SF179ANMBK52 DDM47W1SF179ANMBK52 DEM5W1PF179ANMBK52 DAM7W2PF179ANMBK52	340100419B 340100421B 340100416B 340100420B 340100413B	DM115740-12 DM115742-15 DM115742-14 DM115742-13 DM115741-7	340100102B DBM*44SNMB0L3 340100102B DCM*62PNMB0L3 340100102B DCM*62SNMB0L3 340100102B DDM*78PNMB0L3 340100102B DDM*78SNMB0L3	DBMA*44SNMB0L3K52 DCMA*62PNMB0L3K52 DCMA*62SNMB0L3K52 DDMA*78PNMB0L3K52 DDMA*78SNMB0L3K52
340100101B DAM11W1PF179ANMB 340100101B DBM9W4PF179ANMB 340100101B DBM13W3PF179ANMB 340100101B DBM17W2PF179ANMB 340100101B DBM21W1PF179ANMB	DAM11W1PF179ANMBK52 DBM9W4PF179ANMBK52 DBM13W3PF179ANMBK52 DBM17W2PF179ANMBK52 DBM21W1PF179ANMBK52	340100417B 340100414B 340100418B 340102207B 340102208B	DM115741-8 DM115743-20 DM115743-22 DE-59-20 DE-60-20	340100102B DEM*15PNMB1C0N 340100102B DEM*15SNMB1C0N 340100102B DAM*26PNMB1C0N 340100102B DAM*26SNMB1C0N 340100102B DBM*44PNMB1C0N	DEMA*15PNMB1C0NK52 DEMA*15SNMB1C0NK52 DAMA*26PNMB1C0NK52 DAMA*26SNMB1C0NK52 DBMA*44PNMB1C0NK52
340100101B DDM24W7PF179ANMB 340100101B DDM36W4PF179ANMB 340100101B DDM43W2PF179ANMB 340100101B DDM47W1PF179ANMB 340100101B DEM9SNMB	DCM13W6PF179ANMBK52 DCM17W5PF179ANMBK52 DCM21WA4PF179ANMBK52 DCM25W3PF179ANMBK52 DCM27W2PF179ANMBK52	340102209B 340102210B 340102211B 340102212B 340102213B	DA-59-20 DA-60-20 DB-59-20 DB-60-20 DC-59-20	340100102B DBM*44SNMB1C0N 340100102B DCM*62PNMB1C0N 340100102B DCM*62SNMB1C0N 340100102B DDM*78PNMB1D0N 340100102B DDM*78SNMB1D0N	DBMA*44SNMB1C0NK52 DCMA*62PNMB1C0NK52 DCMA*62SNMB1C0NK52 DDMA*78PNMB1D0NK52 DDMA*78SNMB1D0NK52
340100101B DAM15SNMB 340100101B DBM25SNMB 340100101B DCM37SNMB 340100101B DDM50SNMB 340100101B DEM9PNMB	DDM24W7PF179ANMBK52 DDM36W4PF179ANMBK52 DDM43W2PF179ANMBK52 DDM47W1PF179ANMBK52 DEM9SNMBK52	340102214B 340102215B 340102216B 340102201B 340102206B	DC-60-20 DE-59-20 DD-60-20 D20418-52 D115418-70	340100102B DEM15PNMB1C7N 340100102B DEM15SNMB1C7N 340100102B DAM26PNMB1C7N 340100102B DAM26SNMB1C7N 340100102B DBM44PNMB1C7N	DEMA15PNMB1C7NK52 DEMA15SNMB1C7NK52 DAMA26PNMB1C7NK52 DAMA26SNMB1C7NK52 DBMA44PNMB1C7NK52
340100101B DAM15PNMB 340100101B DBM25PNMB 340100101B DCM37PNMB 340100101B DDM50PNMB 340100101B DEM9SOL3NMB	DAM15SNMBK52 DBM25SNMBK52 DCM37SNMBK52 DDM50SNMBK52 DEM9PNMBK52	340102258B 340102202B 340102203B 340102204B 340102205B	D20418-101 D20419-74 D20419-48 D20420-67 D20420-49	340100102B DBM44SNMB1C7N 340100102B DCM62PNMB1C7N 340100102B DCM62SNMB1C7N 340100102B DDM78PNMB1D7N 340100102B DDM78SNMB1D7N	DBMA44SNMB1C7NK52 DCMA62PNMB1C7NK52 DCMA62SNMB1C7NK52 DDMA78PNMB1D7NK52 DDMA78SNMB1D7NK52
340100101B DAM15SOL3NMB 340100101B DBM25SOL3NMB 340100101B DCM37SOL3NMB 340100101B DDM50SOL3NMB 340100101B DEM9POL3NMB	DAM15PNMBK52 DBM25PNMBK52 DCM37PNMBK52 DDM50PNMBK52 DEM9SOL3NMBK52	340102244B 340102245B 340102246B 340102247B 340102225B	D20419-73 D20419-84 D20420-63 D20420-88 DA19678-167	340100102B DEM15PNMB1C9N 340100102B DEM15SNMB1C9N 340100102B DAM26PNMB1C9N 340100102B DAM16SNMB1C9N 340100102B DBM44PNMB1C9N	DEMA15PNMB1C9NK52 DEMA15SNMB1C9NK52 DAMA26PNMB1C9NK52 DAMA26SNMB1C9NK52 DBMA44PNMB1C9NK52
340100101B DAM15POL3NMB 340100101B DBM25POL3NMB 340100101B DCM37POL3NMB 340100101B DDM50POL3NMB 340100101B DEM9S1AONNMB	DAM15SOL3NMBK52 DBM25POL3NMBK52 DCM37SOL3NMBK52 DDM50SOL3NMBK52 DEM9POL3NMBK52	340102226B 340102227B 340102228B 340102239B 340102240B	DB19678-168 DC19678-138 DD19678-161 DE19977-47 DA19977-40	340100102B DBM44SNMB1C9N 340100102B DCM62PNMB1C9N 340100102B DCM62SNMB1C9N 340100102B DDM78PNMB1D9N 340100102B DDM78SNMB1D9N	DBMA44SNMB1C9NK52 DCMA62PNMB1C9NK52 DCMA62SNMB1C9NK52 DDMA78PNMB1D9NK52 DDMA78SNMB1D9NK52
340100101B DAM15S1AONNMB 340100101B DBM25S1AONNMB 340100101B DCM37S1AONNMB 340100101B DDM50S1AONNMB 340100101B DEM9P1AONNMB 340100101B DAM15P1AONNMB	DAM15S1AONNMBK52 DBM25S1AONNMBK52 DCM37S1AONNMBK52 DDM50S1AONNMBK52 DEM9P1AONNMBK52 DAM15P1AONNMBK52	340102236B 340102237B 340102238B 340102229B 340102230B 340102231B	DB24659-15 DC24660-16 DD24661-13 DE115386-101A DA115386-104A DB115386-102A	340100201B DBMA*44SNMBF0 340100201B DCMA*62PNMBF0 340100201B DCMA*62SNMBF0 340100201B DDMA*78PNMBF0 340100201B DDMA*78SNMBF0	DBMA*44SNMBK52F0 DCMA*62PNMBK52F0 DCMA*62SNMBK52F0 DDMA*78PNMBK52F0 DDMA*78SNMBK52F0

\*NOTE: ESA Part Numbers are for reference only. Only order to ITT Cannon part number which meet or exceed the ESA requirements. (Not on ESA QPL)