

Discover
archaeology
and anthropology

Explore our
K–12 offerings

Plan your visit

2015-2016 TRIP PLANNER



Penn Museum
UNIVERSITY of PENNSYLVANIA MUSEUM
of ARCHAEOLOGY and ANTHROPOLOGY

WELCOME TO THE PENN MUSEUM

AT THE MUSEUM 3

Discover the Penn Museum

What's Inside?

Guided Tours

Hands-On Workshops

Young Student Programs

High School Programs

Accessibility Programs

Sponsored Field Trips

Homeschool Programs

Guide Yourself

SPECIAL PROGRAMS 14

International Classroom

Virtual Programs

Unpacking the Past

EDUCATOR RESOURCES 18

Loan Box

Professional Development

Field Trip Checklist

Free Online Educator Resources

PLANNING YOUR VISIT 20

Museum Manners

Preparing for Your Trip

The Day of Your Visit

Plan Your Museum Visit

Plan Your In-School Program

Curriculum Content Standards

Getting to the Museum

The Penn Museum is deeply grateful to the following individuals, corporations, and foundations for support of educational outreach programs for school groups during 2014-2015:

AKER PHILADELPHIA SHIPYARD

MRS. JOEL BACHMAN

ROBERT L. AND AGNES COOK BARD FOUNDATION

TODD CARSON AND ELIZABETH TABAS, C01

CLASSICAL ASSOCIATION OF ATLANTIC STATES, INC.

THE COCA-COLA COMPANY

MARIE A. CONN, PH.D.

CONNELLY FOUNDATION

KRISTIN DAVIDSON, CGS84, GED88, GED01, AND ROBERT DAVIDSON

DOLFINGER-MCMAHON FOUNDATION

MRS. LOUIS GERSTLEY III, GM57

GROW ANNENBERG FOUNDATION

ANNA SOPHOCLES HADGIS, CGS70, G85, AND

NICHOLAS J. HADGIS, PH.D., PAR

JOSEPHINE KLEIN

JERRY D. LEVITT, M.D., C62, M66, FEL72, AND JULIE M. LEVITT, PH.D., C65

DIANE V.S. LEVY AND ROBERT M. LEVY, WG74

CHRISTIAN R. & MARY F. LINDBACK FOUNDATION

CHRISTOPHER LUDWICK FOUNDATION

DONNA MACKAY, M.D., AND ROBERT MACKAY

ANNETTE MERLE-SMITH

MARY ANN D. MEYERS, PH.D., GR76, PAR

ESTATE OF ELLEN COLE MILLER

NEIL C. MILLER, JR.

NATIONAL ENDOWMENT FOR THE ARTS

PECO

BARBARA RITTENHOUSE

RANDI L. RUST AND WILLIAM RUST III, PH.D., GR08

LEE EVAN TABAS, C72, ME72, AND NANCY FREEMAN TABAS, PAR

ANITA AND T. WAYNE ROBERTS

JOHN TEMPLETON FOUNDATION

GREGORY A. WEINGARTEN

JEFFREY WEISS AND JILL TOPKIS WEISS, C89, WG93

THE WOMEN'S COMMITTEE

AT THE MUSEUM

DISCOVER THE PENN MUSEUM

Housing one of the world's greatest collections of ancient artifacts from around the world, the Museum illustrates the human story: *who we are and where we came from*. As part of the University of Pennsylvania, the Penn Museum is on the forefront of current research. Come to the Museum to transform your understanding of the human experience.



WHAT CAN ARCHAEOLOGY TEACH MY CLASS?

Archeologists aren't treasure hunters, they're evidence seekers. Artifacts help archaeologists reconstruct human history. While at the Museum, your students will sharpen their observational and analytical skills as they learn to see ancient artifacts as evidence of the past.

WHAT CAN ANTHROPOLOGY TEACH MY CLASS?

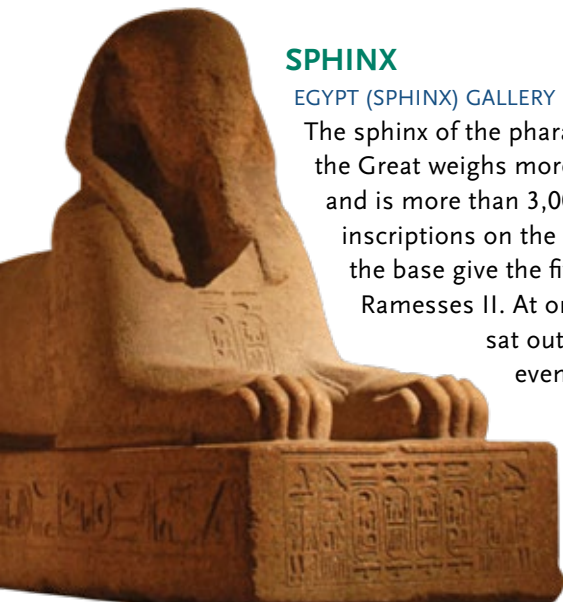
Anthropology is the study of humans, past and present. A trip to the Museum can help your students appreciate how culture affected people in the past and how it affects their lives today, building historical empathy.

SHAKING THINGS UP

This year begins an exciting period of renovations and updates for the Penn Museum and its neighbor, the University of Pennsylvania Health System's Penn Tower. We do not anticipate any major gallery closures at this time, but some artifacts might be off display temporarily due to construction vibrations. Some galleries might be also be affected by construction noise. The Learning Programs Department will ensure you have an enjoyable and informative experience as our Penn neighbor and the Museum improve our buildings.

WHAT'S INSIDE?

Keep an eye out for these extra-special objects while you're at the Museum!



SPHINX

EGYPT (SPHINX) GALLERY | 1279-1204 BCE

The sphinx of the pharaoh Ramesses the Great weighs more than eight cars and is more than 3,000 years old. The inscriptions on the chest and around the base give the five names of Ramesses II. At one time, this sphinx sat outside of the Museum, even in snowstorms!

When it was brought inside, the gallery in which it currently stands had to be built around it.

store. No one really knows how it got from an imperial palace in the Forbidden City to a notable retail shop in downtown Philly, but that's where Museum benefactor Eldridge Johnson spotted it in 1927. Johnson wrote a letter to Dr. Gordon, Director of the Penn Museum, saying that Wanamaker's would sell the crystal ball for \$50,000; but Gordon tripped up a marble step, fractured his skull, and died before he could respond. In Gordon's honor, Johnson purchased and donated the sphere to the Museum.



PUM II & HAPI-MEN

EGYPT (MUMMIES) GALLERY
3RD CENTURY BCE

Before radiology, archaeologists unwrapped mummies to get a better look inside. The perfect rectangular cut on PUM's skull is no accident. Researchers checked to see if the embalmers removed PUM's brain, a routine step in the mummification process. Affirmative! Researchers used less invasive x-ray

techniques to see inside the wrappings of Hapi-Men. And that mini-mummy? That's Hapi-Men's best friend, his dog!

BULL-HEADED LYRE

IRAQ'S ANCIENT PAST | 2500 BCE

This musical instrument of the ancient world rocked the very cradle of civilization! Excavated from beneath the sands of the Iraqi desert, once the location of the ancient city of Ur, this instrument is 4,500 years old. The bull is Utu, a god who judges the dead; appropriate as archaeologists discovered the lyre, along with evidence of murder, in a royal tomb containing the skeletal remains of 73 people.



SARCOPHAGUS

CANAAN AND ISRAEL GALLERY
1200-1150 BCE

This anthropoid or human-shaped coffin was excavated from Beth Shean — an ancient city in modern Israel and a crossroads of the

CRYSTAL SPHERE

CHINA GALLERY | 19TH CENTURY

This crystal ball originally belonged to the last Dowager Empress of China, Cixi (Shi Shi), and, more recently, Wanamaker's department

ancient world for nearly 5,000 years. The archaeological site in which the coffin was unearthed was found beneath 18 levels of cities! And don't be fooled by that lone face... several people would have been buried within!

TWO FACES OF IMPERIAL POWER

ROME GALLERY | 102 CE



This artifact, called the Puteoli Marble Block, used to contain an over-the-top inscription honoring the Emperor Domitian. It described him as an all-around fabulous ruler but in reality, he was a despot—assassinated with a dagger while reading in his room. After his death, all traces of Domitian's rule were removed and his

memory condemned. But, why waste a good piece of marble? The reverse side was carved into a relief honoring Emperor Trajan, a truly respected ruler.

THE NARCE WARRIOR

ETRUSCAN ITALY GALLERY

8TH CENTURY BCE

This is the helmet of an Etruscan warrior charioteer. We know this because the matching breastplate (not pictured) is made of only a single sheet of bronze, sufficient if you're up high in a chariot, not so good if you were engaged in the hand-to-hand combat favored by the Etruscans. This chieftain was buried with the bits that he used with the horses that drove his chariot. Tomb goods that belonged to this fellow's wife are also on display.



DANCE CREST

AFRICA GALLERY

20TH CENTURY

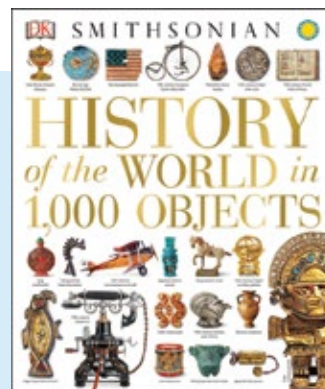
Not all masks are worn on the face! This crest style 'mask' was worn on top of the head. Among the Ejagham (Ekoi) people of West Africa, members of the Nsikpe association used this crest to enforce laws and maintain the peace. It had to be tied on tight because the wearer would dance as part of ceremonies!



STELA 14 FROM PIEDRAS NEGRAS

MEXICO AND CENTRAL AMERICA GALLERY | 758 CE

Meet Black House Great Turtle, the fifth ruler of Piedras Negras, and his mother. This Maya stela tells the story of Great Turtle's ascension to the throne. Archaeologists believe that it's so well preserved because it fell face-down into soft mud and stayed that way until its excavation more than 1,000 years later.



Bring artifact learning into the classroom! Pick up a copy of *History of the World in 1,000 Objects* at the Penn Museum Shop. Many are from the Penn Museum collection!

GUIDED TOURS

Get more from your trip by booking a guided tour! Experienced museum guides lead your students through highlights of the galleries, answer their questions, and share some behind-the-scenes stories of the Museum, all in about an hour.

Penn Museum tours feature opportunities to closely look at artifacts (primary sources for learning about the past) and discuss key concepts with our guides. This format provides an ideal way to address Common Core standards in Speaking & Listening as well as addressing content in World History, World Cultures, and United States History.

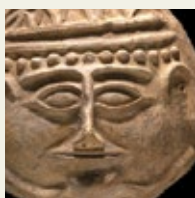


AGES	All ages (Storytime Expeditions available for K–3)
LENGTH	1 hour (Storytime Expeditions 45 minutes)
PRICE	\$2 per participant per tour + Group Admission (\$7 per student, \$12 per adult); 1 FREE adult per every 10 students (required adult to student ratio); All teachers FREE with school ID
GROUP SIZE	10 person minimum (groups with less than 10 will be charged for 10 participants); 30 person maximum; 22 person maximum for Greece
TIMING	Tuesday–Friday, 10:00 am to 4:00 pm
WHEN TO BOOK	Request your tour at least 6–8 weeks in advance. Deposits should be received at least 4 weeks in advance. Reservations must be finalized by the 10th of the month prior to your visit. (Example: October tours must be finalized by September 10th)

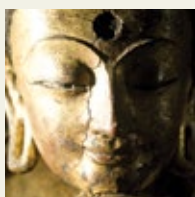
Choose from the following gallery tour options:



AFRICA: The continent of Africa is home to a diverse array of cultures. Masterpieces of mask making and artifacts from the Asante Kingdom are just some of the stars in this gallery.



CANAAN AND ISRAEL: These cultures were crossroads of the ancient world, with strong influences from Egypt to the Near East. A model of an ancient house, complete with 'kitchen,' 'office,' and 'pantry,' brings this gallery to life.



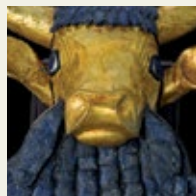
CHINA: See everything from oracle bones, to the origin of Chinese writing, to the crystal ball of the Dowager Empress of China in this eclectic gallery. A beautiful collection of Buddhist artwork reveals the importance Buddhism in China.



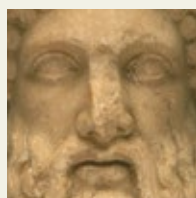
EGYPT: With one of the most impressive collections of Egyptian artifacts in the world, Penn Museum offers a one-of-a-kind Egypt tour including mummies, sarcophagi, and the largest sphinx in North America.



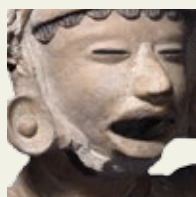
ETRUSCAN/ROMAN WORLD: Contemporaries of the great Greek city-states and forefathers of the Romans, the Etruscans are an influential ancient civilization. This tour includes standouts from both the Etruscan and Rome Galleries, including real bronze armor.



IRAQ'S ANCIENT PAST (MESOPOTAMIA): Iraq is home to the world's oldest civilization, Mesopotamia. Learn about these ancient people from the elaborate artifacts left behind in the royal cemetery found at the great city of Ur.



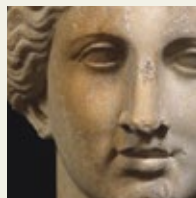
GREECE: Dozens of Greek painted vases and hand-minted coins introduce your students to everything from mythology to daily life in ancient Greece.



MESOAMERICA: Birthplace of the Maya and Aztec civilizations, Mesoamerica has a rich cultural tradition. Discover artifacts from an ancient ballgame, and stand in awe under the large stone stela monuments.



NATIVE AMERICAN VOICES: Technology brings this gallery to life, introducing visitors to the diverse Native American people of today. Hear their voices as you discover cultural artifacts ranging from the Southwest to the Arctic.



ROME: Get an inside look into the Roman world with glimpses of politics, religion, and art. Ancient materials of marble, metal, and glass tell the stories of this influential civilization.

For a description of Storytime Expeditions for K–3 groups, see page 10.

SPECIAL THEMED TOURS

INTRO TO ARCHAEOLOGY:

How do we know what we know? What do archaeologists do, and how does it tell us about the past? Brush up on your archaeological thinking skills as you examine highlights from around the Museum.

THE GOLDEN AGE OF KING MIDAS:

Discover the story of the real King Midas! This exhibit is a once-in-a-lifetime chance to see artifacts from the archaeological site of Midas's royal capital, Gordion. Archaeologists unlock King Midas's world and introduce your students to the kingdoms of ancient Turkey. Available from mid-February–November 2016.

HANDS-ON WORKSHOPS



Delve further into the ancient world with a workshop! Experienced museum educators lead your students through hands-on activities that explore facets of past cultures. Students learn how to use artifacts (primary sources for learning about the past) as clues, and how to connect them with content knowledge about the ancient world.

Props and replica artifacts give students interactive life-like experiences. This format provides an ideal way to address Common Core standards in Speaking & Listening and Mathematical Practice, as well as addressing content in World History and World Cultures.

AGES	See workshop descriptions
LENGTH	1 hour
PRICE	\$100 per workshop plus group admission (\$7 per student; \$12 per additional adult; all teachers with school ID are FREE)
GROUP SIZE	30 student maximum; 1 adult REQUIRED for every 10 students
TIMING	Tuesday–Friday, 10:00 am to 2:00 pm
WHEN TO BOOK	Request your workshop at least 6-8 weeks in advance. Deposits should be received at least 4 weeks in advance. Reservations must be finalized by the 10th of the month prior to your visit. (Example: October tours must be finalized by September 10th)

DIGGING UP ROME

Grades: 6th–12th

How do archaeologists interpret artifacts? Photos and video footage tell the story of Penn Museum excavations of the ancient Roman world. Students practice archaeological site interpretation, handle replica artifacts, and make observations and inferences to draw conclusions about the past.

MAKING A MOSAIC

Grades: 5th–9th

Discover the artistry of Roman mosaics in this hands-on workshop where students learn all about the different types of this decorative art, and how ancient artisans created them. Students will work in small groups, then as a class to create one giant mosaic comprised of over 4,000 tesserae! The workshop incorporates math concepts, along with the study of ancient history.



MUMMY MAKERS

Grades: 5th–9th

Ever wonder how and why the ancient Egyptians mummified their dead? Learn how to be an ancient Egyptian embalmer and prepare Mr. Ulysses Penn for his journey to the afterlife! Using fabricated mummies, students will explore mummification through each step of the process including brain removal, evisceration, desiccation, and wrapping. Students will also investigate the religious significance of mummification. This workshop uses life-like mummies.

PREPARING FOR ETERNITY: EGYPTIAN FALSE DOORS

Grades: 2nd–5th

What did the inside of an ancient Egyptian tomb look like? What did people get to take with them into the afterlife? Students learn about hieroglyphs, tomb offerings, and false doors—ancient Egyptian passageways between the worlds of the living and the dead. Students then create their own false doors incorporating hieroglyphs and ancient Egyptian art motifs.



PRESERVING THE PAST

Grades: 5th–9th

What role does a conservator play in preserving the past? Students will not only learn the answer to this question, but will explore some core practices of conservation. View real-life examples of conservation in the Museum's collection, and learn about the science behind deterioration and preservation. Then practice the basics of conservation with hands-on activities.

ROMAN MARKETPLACE

New Accessibility program! See page 11.

IN TOUCH WITH ANCIENT EGYPT

New Accessibility program! See page 11.

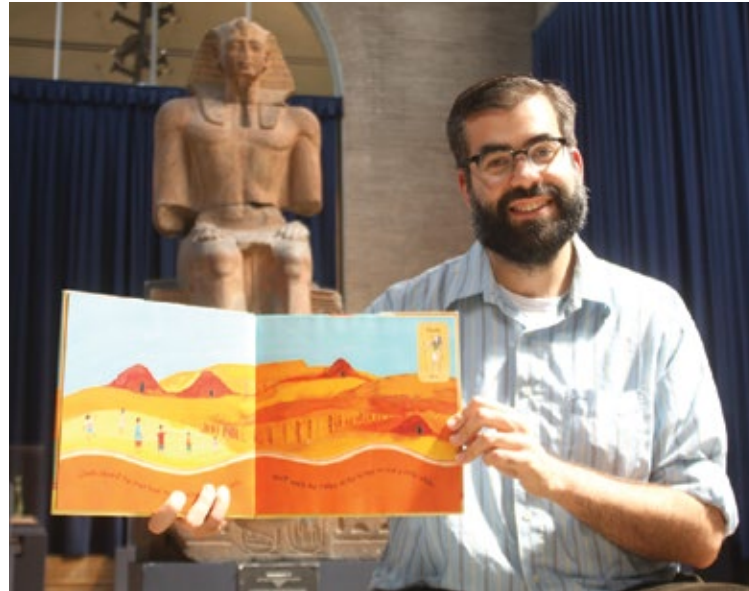
YOUNG STUDENT PROGRAMS

The Penn Museum engages the younger generation of museum lovers. Bring your K–3 class for a tour, workshop, or our brand-new program, Storytime Expeditions.

STORYTIME EXPEDITIONS

Grades: K–3rd

The Penn Museum invites younger learners to enjoy special readings of award-winning books in our galleries. Storytime Expeditions supports literacy skills and enriches the gallery experience. Each storytelling session includes direct connections to artifacts on display and may include hands-on artifacts for your class to touch and explore. This new program runs approximately 45 minutes and has limited availability. For booking information, see page 6.



HIGH SCHOOL PROGRAMS

The Penn Museum is a tremendous resource for enriching your high school curriculum, helping your students learn about ancient cultures while also connecting them to experts in the field and the techniques they use for understanding the past. We recommend pairing tours with our International Classroom archaeology/anthropology experts (see page 14) for in-depth explorations that are perfect for advanced learners.

THEMED HIGH SCHOOL DAYS

This school year, we will host themed event days for high school classes. These special days will involve a keynote addresses by top Penn professionals and special workshops led by staff and University PhD students. Offering a deep dive into specific content areas, Themed High School Days connect your students with other area high schools and Penn professionals who share their passions. Each day can only accept up to 120 students; price is \$16/student, which includes three programs and admission. To register, contact the Learning Programs Department at teens@pennmuseum.org or 215.573.5313.

February 10: Latin Day

Includes Rome/Etruscan Italy Tours, presentations by Art and Archaeology of the Mediterranean World, and more.

March 16: Forensic Science Day

Includes tours of Making and Unmaking Race, presentations by forensic experts, and more.

SUMMER INSTITUTE IN ARCHAEOLOGICAL SCIENCE

From June 27–July 8, the Penn Museum will offer a two-week college preparation summer program to unite high school students and Penn faculty. This course is based on the popular college-level Food and Fire course taught at our state-of-the-art Center for the Analysis of Archaeological Materials. The Summer Institute acclimates students to college level work and examines humanity's past and the present day through an archaeological lens. Students will attend discussions led by Penn faculty and staff as well as participate in hands-on lab work. Class size is very limited; details and registration to be released by January 2016. For questions, contact 215.573.5313.

ACCESSIBILITY PROGRAMS

Explore ancient cultures while reinforcing goals from your students' Individualized Education Programs! Our accessible programs intertwine academics with social and life skills and are appropriate for students with cognitive, sensory, mobility, and behavioral disabilities. Each program is multisensory and is designed by a certified special education teacher. View our website for additional programs offered this year. Modified versions of these programs can also be used with K-3 audiences.

ROMAN MARKETPLACE

Do as the Romans do and take part in an interactive ancient Roman market! Aligned with the School District of Philadelphia's Low Incidence Curriculum, this workshop highlights social interaction, emotional response, and functional mathematics in a simulated marketplace. Students will wear togas, handle reproductions of ancient artifacts, and use all of their senses to shop the Roman market using their own budgets.

IN TOUCH WITH ANCIENT EGYPT

Become an ancient Egyptian embalmer and help prepare Mr. Ulysses Penn for his journey to the afterlife! Using fabricated mummies, students will explore each step of the mummification process, including brain removal, evisceration, desiccation, and wrapping. Tools of the trade will be available for students to touch and a Jello brain for teachers to scramble. This workshop uses life-like mummies.

TOUCH TOURS AND WORKSHOPS

"Seeing is believing, but touching is knowing" is this program's motto. Using their sense of touch, students with visual impairments are able to explore select objects in the Egypt galleries in



addition to artifact reproductions. A hands-on workshop then explores facets of ancient Egyptian history, from the process of mummification to hieroglyphs. All Touch Tours and Workshops are co-taught by guides who are blind or visually impaired and guides who are sighted. To book your Penn Museum Touch Tour, contact our partner, Philly Touch Tours, at phillytouchtours.com/contact.

SPONSORED FIELD TRIPS

Want to come to the Penn Museum, but can't afford the full cost? Apply for our Sponsor-A-School grant funding!

Title I public, charter, and Catholic schools within the City of Philadelphia are given priority. Schools can receive

Sponsor a School funding for all or some of the following: Buses; Museum general admission; Classroom

Workshops; Guided gallery tours; International Classroom. Sponsor a School applications are due at least six weeks prior to the proposed trip date. Request an application at education@pennmuseum.org.

HOMESCHOOL GROUPS

The Penn Museum welcomes homeschool groups to use the galleries for student learning. No matter the size of your group, make a reservation in advance to be eligible for our discounted group rate. Guided Tours of our galleries are available for \$90 for 10 or fewer total participants. Utilize our Online Educator Resources (page 19) to prepare for your trip with a pre-visit lesson or request our scavenger hunt when you make a reservation.



ARCHAEOLOGICAL ADVENTURES HOMESCHOOL DAYS

Throughout the year, we welcome homeschool families to participate in our themed Archaeological Adventures. Explore our galleries with a guided tour, visit conservators *In the Artifact Lab*, join a hands-on workshop or storytelling session, or make archaeology-inspired artwork. Homeschool Day admission and program costs: \$15 per child/adult. One adult per family is free, and children 3 and under are free. Reservations are required and can be booked online. View the Events Calendar (www.penn.museum/calendar) to reserve your spot for upcoming Homeschool Days and family events at the Penn Museum.



OCTOBER 14: Egypt and Mummies

DECEMBER 16: Native Peoples of the Americas

FEBRUARY 24: King Midas' Gordion

APRIL 20: The Mediterranean World

JULY 6: Conservation and Museum Careers

AUGUST 17: Science and Technology



GUIDE YOURSELF

Want to explore the Museum at your own pace? Guiding yourself is the way to go. You can plan an entirely self-guided visit, or check out the galleries before or after your scheduled programs. Our free Online Educator Resources (page 19) include gallery guides and activities that tie into content standards so you can make the most of your visit. For tips on how to get the most out of your experience see the Museum Manners, Preparing For Your Trip, and The Day of Your Visit sections on pages 20 and 21.

AGES	All ages
LENGTH	Recommended length of two hours
PRICE	Group admission \$7 per student; 1 FREE adult per every 10 students; All teachers with school ID are FREE; \$12 per additional adults
GROUP SIZE	ANY SIZE (one adult REQUIRED for every 10 students). Please divide into small groups (about 10 students with chaperone) to explore the galleries.
TIMING	Tuesday – Sunday, 11:00 am to 4:00 pm
WHEN TO BOOK	Four weeks in advance for small groups (fewer than 50 people); Six to eight weeks in advance for large groups (more than 50 people)

SPECIAL PROGRAMS



Winner of Pennsylvania Council for International Education's 2013 Bringing the World to Pennsylvania: K-16 Collaboration Award.

INTERNATIONAL CLASSROOM

Want to learn more about world cultures, both past and present? Our International Classroom educators will take you to amazing places around the world through three teaching tracks.

WORLD CULTURES EDUCATORS share traditional and modern cultures from their nations.

CULTURAL PERFORMERS demonstrate international performing arts.

ARCHAEOLOGY AND ANTHROPOLOGY EXPERTS provide academic perspectives.

Programs are adjusted to accommodate different age and grade levels.

INTERNATIONAL CLASSROOM PROGRAMS ARE OFFERED IN THREE WAYS:

1. See an educator at the museum.
2. Have an educator visit you in your classroom or community center!
3. Virtual International Classroom Workshops: Read more about our Virtual Programs on page 16.

AGES	All ages
LENGTH	1 hour
PRICE	In the Museum: \$100 per 30 students plus group admission (\$7 per student; \$12 per additional adult; all teachers with school ID are FREE) In your classroom or community: \$200 for a location within 20 miles of the Penn Museum; \$300 + travel cost for a location beyond 20 miles from the Penn Museum (50% discount applies for additional sessions) Virtual International Classroom Workshops: \$200 per session (per 30 students)
GROUP SIZE	Flexible (In the Museum: one adult REQUIRED for every 10 students)
TIMING	In the Museum: Tuesday-Friday, 10:00 am–4:00 pm depending on speaker availability In your classroom or community: Flexible depending on speaker availability Virtual International Classroom Workshops: See page 16
WHEN TO BOOK	Six to eight weeks in advance

Our content-rich International Classroom programs include:

WORLD CULTURE EDUCATORS

Learn more about a country directly from a person who lived there! This series provides a very personal interaction for students. Workshops include:

- Celebrate the Year 4714! Chinese New Year Rituals
- Chilean Heroes: Story of Youth Leadership for School Reform
- Chinese Characters: a Journey Across Time
- Finding Your Place in the World: Refugee Experiences
- Greece, the Crossroads of Three Continents: History, Culture and Identity
- Multicultural Brazil: African Diaspora and Its Global Influences
- My Life in a Bento Box: Ethnography of Japanese School Lunch

ARCHAEOLOGY AND ANTHROPOLOGY EXPERTS

Our museum-affiliated scholars share their experiences in the field through visuals, hands-on activities, and interactive discussions. Programs include:

- Archaeology: Helping the Past Speak to Us
- CSI: Ancient Egypt, Forensic Anthropology 101
- Exploring the Classical World through Artifacts
- Gifts for the Greek Gods: Clay Workshop
- I Want My Mummy: History and Science Behind Mummification
- Not Quite as Easy as ABC: Learning to Write Cuneiform 4000 Years Ago and Today
- Stories from *Native American Voices: The People—Here and Now*
- Teeth, Diet, and Evolution

CULTURAL PERFORMERS

Immerse your class in diverse cultural expressions. Local performing artists introduce cultural rituals, traditions, and stories from around the world. These programs utilize a range of arts to educate students about vibrant cultural traditions.

Programs include:

- The Continent of the Drum: The Meaning Behind Traditional and Modern African Percussions
- Dance in Egypt as a Celebration of Daily Life
- Sattriya: A Spiritual Odyssey, a Classical Dance from Northeast India's Hindu Monasteries
- Habiba: History and Mystery of Belly Dance
- Aesop's Fables: Puppet Theater

For the full list of available programs contact ic@pennmuseum.org.



VIRTUAL PROGRAMS

Experience the Penn Museum without leaving your classroom! Through the use of video conferencing technologies, a museum educator beams into your class to provide a museum-themed lesson in real-time. These virtual workshops are designed to involve students through inquiry, object analysis, demonstrations. This technology provides you with a unique opportunity to introduce, conclude, or supplement a visit to the Penn Museum.

VIRTUAL WORKSHOPS

Daily Life in Ancient Rome

Grades: 5–9

“Experience” ancient Roman artifacts as we broadcast live from our Rome Gallery! Students embark on a virtual tour of a lavish Roman home and encounter real objects that would have been used in the day-to-day life of Romans.

Mummy Makers

Grades: 5–9

Students will learn how and why ancient Egyptians mummified their dead by stepping into the role of apprentice to an ancient Egyptian embalmer! Using fabricated mummies, students will explore the artificial mummification process as they prepare Mr. Ulysses Penn for his journey to the afterlife. This workshop uses life-like mummies.

Preserving the Past

Grades: 6–10

Learn how we care for our ancient artifacts as we broadcast live from our renowned Artifact Lab. Students will investigate the science behind deterioration and preservation by practicing the basics of conservation, viewing examples of conservation in the Museum’s collection and speaking with a Penn Museum conservator!



VIRTUAL INTERNATIONAL CLASSROOM WORKSHOPS

Discovering Civilizations with Real Archaeologists and Anthropologists

Grades: 9–12

Bring a real archaeologist or anthropologist into your classroom virtually to share their in-depth expertise and experiences in the field through visuals, objects and interactive conversations. Choose from the programs listed below. For the International Classroom description, please see page 15.

- Exploring the Classical World through Artifacts
- Can You Dig It?: Archaeology of Ancient Egypt
- Sweet Home Egypt: Ancient Egyptian Cities and Daily Life
- Teeth, Diet, and Evolution
- The Evidence of Human Evolution
- Gifts for the Greek Gods

LENGTH	1 hour
PRICE	\$125 per 30 students. Book two or more and receive 10% off of your package! Virtual International Classroom program costs: see page 14
GROUP SIZE	We recommend a 30-student maximum
TIMING	Monday to Friday, 8:00 am to 3:00 pm In-gallery programs are subject to gallery availability
WHEN TO BOOK	Reservations must be finalized by the 10th of the previous month prior to your program. (Example: October programs must be finalized by September 10th.)



UNPACKING THE PAST



Unpacking the Past is a FREE program that connects Philadelphia’s 7th grade classrooms with the world-renowned collections and teaching resources of the Penn Museum. *Unpacking the Past* takes a comprehensive approach to ensure that the experiences of both the students and the teachers are academically enriching and connected to the School District’s Scope and Sequence, Common Core curriculum, and 21st Century Skills.

PART 1: CLASSROOM OUTREACH LESSON

Our friendly and experienced educators will come to your class and engage your students in a fun, hands-on lesson, where they will practice the skills that archaeologists use to “unpack the past” and get an overview of what to expect on their trip to the Museum.

PART 2: MUSEUM TOUR AND WORKSHOP

Shortly after the outreach lesson, bring your classes to the Museum (all expenses paid). Students will go on a guided tour of our world-famous Egypt or Rome galleries, participate in an engaging classroom workshop, and have some time to explore the Museum with a chaperone. Tours and workshops are led by the same educators who visited the class, so your students will feel right at home! All activities incorporate critical thinking and relate directly to the Common Core skills emphasized in 7th grade. Students also receive a gift bag with souvenirs to take home.

PART 3: MEMBERSHIP

All students and teachers who participate in *Unpacking the Past* receive a FREE year-long family membership, so they can return to the Museum with their families. Families who use their memberships at least three times during the year will be automatically renewed for a SECOND free year of membership!

AGES	7th grades from Philadelphia public and Title I charter schools
LENGTH	Outreach lesson: 45 min. - 1 hour At the Museum: 1 hour tour + 1 hour workshop
PRICE	FREE with FREE transportation
GROUP SIZE	Flexible
TIMING	Monday – Friday, 10:00 am – 2:00 pm
WHEN TO BOOK	Four to six weeks in advance of each activity; the Outreach Lesson and Museum Visit must be booked within two weeks of each other
HOW TO BOOK	www.penn.museum/teachers-and-students/unpacking-the-past

The *Unpacking the Past* educators are happy to bring activities and artifacts to your school for events such as back to school nights or report card conference days. If you have other suggestions for how we can support you and your students, let us know!

LOAN BOX

Enhance your classroom curriculum with the Penn Museum’s Loan Box Program.

Cultural Loan Boxes that focus on the daily life of ancient world cultures are available to be rented for one month. Our Boxes are designed to provide a comprehensive resource for teachers to further engage their students in the

AGES	All ages
LENGTH	30 days (one month)
PRICE	\$75 for one month loan
TIMING	Monday to Friday 8:00 am to 3:00 pm <i>Teacher must pick up and return Loan Boxes in person</i>
WHEN TO BOOK	Reservations must be finalized by the 10th of the month prior to your Loan Box pick-up month. (Example: October programs must be finalized by September 10th.)

academic concepts presented in the classroom. Through touching and studying replica artifacts, students lessen the gap between themselves and history, fostering a deeper connection to the objects, and ancient cultures. Visit our website for available topics: www.penn.museum/teachers-and-students/in-your-classroom.

WHAT DO YOU GET IN A CULTURAL LOAN BOX?

- 8-10 Penn Museum Education Collection Artifacts
- Supporting information about the artifacts included
- Supplementary materials (articles, worksheets, etc.)
- Lesson Plans and vocabulary lists
- Visual Teaching Aides

PROFESSIONAL DEVELOPMENT

Increase content knowledge, discover new resources, and swap stories when you attend professional development workshops at the Penn Museum. Check our website for upcoming opportunities www.penn.museum/teachers-and-students/teacher-resources.

UNPACKING THE PAST TEACHER PROFESSIONAL DEVELOPMENT

Throughout the year, all Philadelphia public and Title I charter middle school teachers are invited to attend *Unpacking the Past* professional development days at the Penn Museum. During these events, you can preview the program offerings, create lessons to connect your museum trip to your curriculum, and hear from Penn experts. All *Unpacking the Past* professional developments offer Act 48 credits, free parking, and free meals.

Contact schools@pennmuseum.org for upcoming dates or view our website’s professional development page.

EDUCATOR PREVIEW PACKAGE

Curious about our programs? Visit the museum with your educator group and book a one-hour Educator Preview Package. This provides a shorted preview tour and workshop combination so you get a sense of what your students can experience. Cost is \$50 per 20 teachers. Please schedule 6-8 weeks in advance.

FIELD TRIP CHECKLIST

Follow this checklist to make sure you and your students are prepared for your trip.

CHECK	TASK
✓	Receive Group Visit Confirmation & Visit Information.
	Schedule bus(es) or other transportation.
	Secure chaperones (one chaperone for every 10 students).
	Send 50% deposit within two weeks of receiving contract. Full payment is due the day of your program(s).
	Review Museum Manners (page 20) with students and chaperones.
	Assign students and chaperones to groups for their Museum programs according to provided itineraries.
	Assign students and chaperones to small groups for self-guiding gallery time (maximum 10 students with at least one chaperone).
	TWO WEEKS BEFORE YOUR TRIP: Notify the Museum if there are any members in your group with special needs, including those using wheelchairs or crutches.
	Let us know whether students will be permitted to visit the Penn Museum Shop.
	Contact the Museum with a final head count.
	THE DAY BEFORE AND DAY OF THE TRIP: Remind students to bring packed lunches.
	Students should leave bookbags/large purses at school if possible—they cannot bring them in the galleries. Groups are provided with bins to stow lunches and large personal items, however the Museum is not responsible for lost or stolen personal items.

FREE ONLINE EDUCATOR RESOURCES

Looking for activities to enhance your classroom curriculum? Thinking about ways to prepare your students for their experience with the Penn Museum? We have you covered! Check out the FREE standard-based teaching material at www.penn.museum/teachers-and-students/teacher-resources.

CURRICULUM ENHANCERS:

Educator's Guides: *Native American Voices and Secrets of the Silk Road*

Content Resources: *Africa, Egypt, Ancient Math, and Mesoamerica*

PREPARING YOUR CLASS:

Gallery Guides: *Africa, Buddhism, China, Egypt, and Iraq*

Activities: *Write Like an Egyptian, Write Like a Babylonian, and Ancient Crossword Puzzles*

MUSEUM READY ACTIVITIES:

Self-Guide Brochure: *Penn Museum's Greatest Hits*

Gallery Guide: *The 10 Things You Didn't Know About the Penn Museum*

Activity: *Riddles Scavenger Hunt*

MUSEUM MANNERS:

A VISITOR'S GUIDE TO THE PENN MUSEUM

To make your class field trip an enjoyable experience, we developed Museum Manners to help prepare your students and chaperones. For many students and adults this will be their first visit to a museum, so discussing these guidelines prior to your arrival will help them feel more comfortable at the Museum. Please respect these policies as you explore the galleries so that you and our artifacts are safe.



UPON YOUR ARRIVAL:

- **Backpacks, large bags, and umbrellas are not permitted in the galleries.** You will be directed to stow these larger items in our Group Dining cubbies or classroom storage bins. When applicable, you will be asked to hang your jackets on coat racks that will be provided.

WHY? Large bags can accidentally bump or knock artifacts and display cases.

- **Food, drinks, and gum cannot enter the galleries.** You will be directed to place your lunches in our Group Dining cubbies or classroom storage bins. Trash and gum should be disposed of in our garbage or recycling bins located in the lobby and lunch areas.

WHY? Crumbs and spills can attract bugs, mice, and bacteria that can damage our artifacts.

- **Students should be divided into small groups that are supervised by a chaperone or teacher.** For student safety and engagement, we require chaperones to accompany students in the galleries, gift shop, and bathroom.

WHY? Students take cues from adults, so chaperone participation in museum rules and learning enhances student behavior.

YOUR PROGRAM & TOUR EXPERIENCE:

- **Photographs should be taken at the end of your programs.**

To teach others what you have learned, we encourage you to take pictures of objects AFTER your tour has finished.

WHY? Taking photos during a tour distracts students from engaging with objects and can slow down the group.

- **All cell phones, tablets, and headphones should stay in your bag or pocket during our tours and programs.** Students can use these personal devices at their leisure during lunch or free time. **WHY?** Listening closely and volunteering answers will help students connect to the academic concepts being presented.

EXPLORING THE MUSEUM

- **Running, loud voices, and disruptive behavior endangers our artifacts and other visitors.** Please speak to your peers about objects and exhibitions, but do so at a low volume and use a normal walking pace.

WHY? The museum is a place for other students, visitors, archaeologists, and researchers to study and work.

- **Objects, cases, and displays cannot be touched.** Our artifacts are old, rare, and fragile, so keep a safe distance (about 12 inches) from artifacts to avoid any accidents.

WHY? The natural oils on our skin can cause harm to our artifacts over time.

- **Pencils are the only writing tools that can be used in the galleries.** We will have pencils available to visiting school groups if they are needed.

WHY? Ink is forever and difficult for our conservators to remove! With a drop of a pen you risk damaging an artifact.

- **Tour guides take the lead within the galleries.** If you run into a tour in progress, please avoid interrupting the guide.

WHY? Many school groups learn about our objects by attending a tour in our Museum.

PREPARING FOR YOUR TRIP

CHAPERONE REQUIREMENTS

Students must be in the presence of a chaperone at all times while on the premises. We require that one adult chaperone (a teacher, parent, or another responsible adult) be present for every 10 children.

Chaperones play an important role in a successful museum trip so we ask that you please review the Museum Manners with them before your visit. All accompanying chaperones should be aware of the group's itinerary, including scheduled programs.

CANCELLATIONS

All cancellations must be submitted in writing at least two weeks in advance to education@pennmuseum.org. Phone messages will not be accepted to cancel a trip. Cancellations made two weeks or more in advance will receive a full refund of all payments. Cancellations less than two weeks in advance will receive a partial refund of the deposit, with a \$50 cancellation fee withheld. Repeat late cancellations may result in a school's inability to book future visits.

WEATHER POLICY

If a Museum visit is canceled due to inclement weather on the day of the visit, the group can receive a full refund, or reschedule the visit at no cost. Please call the Learning Programs Department (215.746.6774) immediately if you need to cancel due to inclement weather. The Museum also reserves the right to cancel trips due to inclement weather.

SPECIAL NEEDS

Please alert the Museum of anyone in your group that has special needs when you schedule your visit. If a group member uses a wheelchair or crutches, please also let us know in advance. Learn more about accessibility at the Penn Museum at www.penn.museum/visit/plan-your-visit.

PENN MUSEUM SHOP

Please decide ahead of time if your students will visit the Museum Shop and let us know what you have decided two weeks before your scheduled visit. Advanced notice when school groups will be shopping helps us to make sure everyone can visit. Museum Manners (page 20) apply to the Shop. There are glass cases and displays in this area, so students should not take in their book bags or other large bags. Please divide the students into smaller groups. A maximum of 10 students may visit the Shop at a time, with at least one chaperone present.

THE DAY OF YOUR VISIT

ARRIVAL TIME

Plan to arrive 10 to 15 minutes before the scheduled start time of your visit in order to enjoy all of your scheduled programming. If you arrive late, the Museum will work to provide you the full content of your program. However, your program may be shortened depending on staffing time and other scheduled groups. If you are more than 30 minutes late for your program, it may be cancelled.

LEAVE BOOK BAGS AT SCHOOL

If possible, students should NOT bring their book bags to the Museum, as they cannot carry them throughout the day. Our coat/bag storage area is in the lobby and not locked. We recommend that the students leave valuables at home. The Museum is not responsible for lost or stolen items.

STORING COATS, BAGS, AND LUNCHES

Please stow larger items and bagged lunches in our Group Dining shelves, coat racks, or storage carts labeled with your school's name. A Museum staff member will let you know where. Our coat/bag storage area is in the lobby and not locked. The Museum is not responsible for lost or stolen items.

RUNNING LATE? CONTACT US!

If you need to contact the Learning Programs Department on the day of your trip, please call the main desk at 215.898.4001 to speak to someone immediately. The Penn Museum reserves the right to shorten scheduled programming for groups that arrive late.

EATING LUNCH

Students may bring bagged lunches. Lunch bins and cubbies are available for your group to store their lunches while they are in the galleries. The Group Dining area is available to groups on a first-come, first-served basis; it seats about 110 people. Additional space is available in Warden or Mosaic Garden (weather permitting). Please expect to share the lunch spaces with other groups and guide students to sit at as few tables as possible. There are vending machines with candy, snacks, and drinks in the Group Dining Area.

MUSEUM CAFÉ

Students should not eat in the Museum Café. If you would like to purchase lunches from the Museum Café, please let us know within two weeks of receiving your contract. Schools should contact the Café directly at www.cxra.com/contact to make arrangements in advance to purchase prepared lunches.

PLAN YOUR MUSEUM VISIT

THREE WAYS TO BOOK!

Online Form: www.penn.museum/k12programrequest

By Email: education@pennmuseum.org

By Phone: 215.746.6774

THREE TRIP-SPECIFIC QUESTIONS

What programs would you like to book?

Will you bring lunches for students to eat at the Museum?

Will your students be allowed to visit the gift shop?

CONTACT INFORMATION/LOGISTICS

School name _____

School address _____

Trip Organizer's Name _____

Trip Organizer's Email _____

Trip Organizer's Phone number _____

Grade of students _____

Number of students _____

Number of adults _____

REQUESTED DATE

Date requested _____

Time requested _____

MUSEUM VISIT COSTS

GROUP ADMISSION

\$7 per student; \$12 per additional adult;
Teachers with school ID are FREE
(One FREE adult for every 10 students)

WORKSHOPS AND INTERNATIONAL CLASSROOM:

\$100 per 30 students

GUIDED TOURS:

\$2 per person (including additional adults)

TOUCH TOUR AND WORKSHOP:

\$200 per 15 students (2 hours)

GUIDED TOURS

- Africa
- Canaan and Israel
- China
- Egypt
- Etruscan and Roman World
- Greece
- Intro to Archaeology
- Iraq's Ancient Past (Mesopotamia)
- Mesoamerica
- Native American Voices
- Storytime Expeditions

WORKSHOPS

- Digging Up Rome
- Making a Mosaic
- Mummy Makers
- Preparing for Eternity: Egyptian False Doors
- Preserving the Past

INTERNATIONAL CLASSROOM

For a full list of available programs, visit www.penn.museum/teachers-and-students/k-12-educators/international-classroom.

World Culture Educators:

Archaeology and Anthropology Experts:

Cultural Performers:

ACCESSIBILITY PROGRAMS

- In Touch with Ancient Egypt
- Roman Marketplace
- Touch Tour and Workshop (2 hours, \$200 per 15 students)

SUGGESTED ITINERARIES

- Around the World in 120 Minutes:** Guided Tour + International Classroom (Choose from the options above)
- Egyptomania:** Egypt Guided Tour + Mummy Makers Workshop OR Preparing for Eternity Workshop
- All Roads Lead to Rome:** Rome Guided Tour + Making a Mosaic Workshop OR Digging Up Rome Workshop
- Archaeologists in Training:** Archaeology Guided Tour + Preserving the Past Workshop
- Exploring Native America:** *Native American Voices* Tour + Native American International Classroom Educator OR Preserving the Past Workshop
- Illustrating Chinese Traditions:** China Guided Tour + Chinese New Year Rituals
- Build Your Own Double Feature:** Combine two or more of our offerings to create the perfect itinerary for your group

PLAN YOUR IN-SCHOOL PROGRAM

INTERNATIONAL CLASSROOM

World Culture Educators: _____

Archaeology and Anthropology Experts: _____

Cultural Performers: _____

VIRTUAL PROGRAMS

- Daily Life in Ancient Rome
- Mummy Makers
- Preserving the Past
- Virtual International Classroom Workshops

Topic _____

LOAN BOXES

- Egypt
- Greco-Roman
- Other _____

IN-SCHOOL COSTS

LOAN BOX:

\$75 for 30-day rental

INTERNATIONAL CLASSROOM:

\$200+ per 30 students depending on school location

VIRTUAL WORKSHOPS:

\$125 per 30 students

VIRTUAL INTERNATIONAL CLASSROOM WORKSHOPS:

\$200 per 30 students

CURRICULUM CONTENT STANDARDS

Want to gain a better idea of what your students will be learning during their day at the Penn Museum? Are you the kind of teacher who would like help integrating the trip into the rest of your unit? Visit our website for a look at abbreviated lesson plans of all of our programs, which include standards. For a quick overview, refer to the table below.

STANDARDS	DOMAINS ADDRESSED
Common Core	<ul style="list-style-type: none"> • Key Ideas and Details • Integration of Knowledge and Ideas • Speaking & Listening
21st Century Skills	<ul style="list-style-type: none"> • Cross Disciplinary Thinking • Critical Thinking and Problem-Solving • Communications & Collaboration
National Social Studies Curriculum Standards	<ul style="list-style-type: none"> • Culture and Cultural Diversity • Time, Continuity, and Change • Global Connections
Next Generation Science Standards	<ul style="list-style-type: none"> • Biological Evolution: Unity and Diversity • Earth and Human Activity • Engineering Design
Low Incidence Curriculum	<ul style="list-style-type: none"> • Interpersonal Communication & Social Skills • Functional Academics



Penn Museum
UNIVERSITY of PENNSYLVANIA MUSEUM
of ARCHAEOLOGY and ANTHROPOLOGY

3260 South Street | Philadelphia, PA 19104

GETTING TO THE MUSEUM

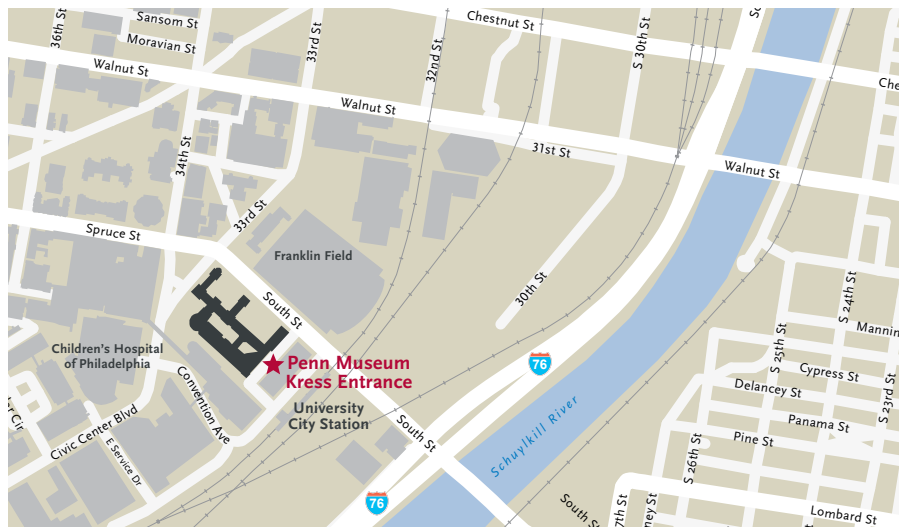
LOCATION

The Penn Museum is located at 3260 South Street, at the corner of 33rd and South Street in Philadelphia, PA. We are across the street from Franklin Field and the Hospital of the University of Pennsylvania.

ARRIVAL AND DEPARTURE

Buses should drop off and pick up groups at the Kress Entrance. The driveway to this entrance is located on South Street between the east side of the Museum and a parking garage. Buses should use the call box, then pull down the driveway until they reach the Kress Entrance doors.

Students should remain on the bus while the group leader reports to the visitor services desk inside the Kress Entrance. Here, the group leader will be informed as to where lunches and belongings can be stored, where to gather the school group, and any other special instructions. This ensures the quickest and easiest beginning for your visit.



PARKING

Buses are responsible for taking care of their parking needs. The Penn Museum can provide some suggested parking locations. For parking options, please visit the Penn Campus Park & Ride website: campusparkandride.com/cprindex.html