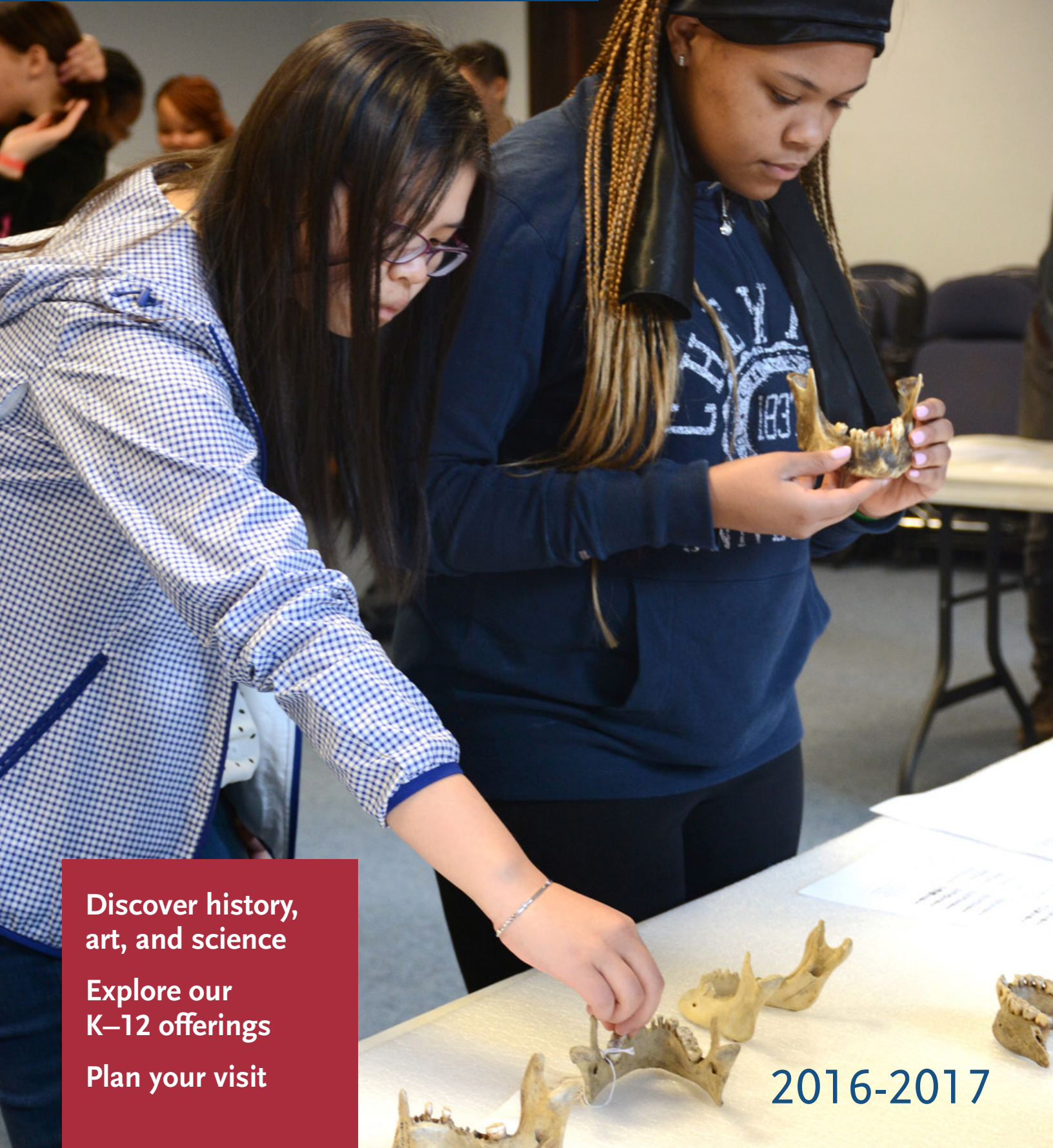




Penn Museum

TRIP PLANNER



Discover history,
art, and science

Explore our
K–12 offerings

Plan your visit

2016-2017

WELCOME TO THE PENN MUSEUM

AT THE MUSEUM 3

Discover the Penn Museum

What's Inside?

Guided Tours

Interactive Workshops

Access Programs

Homeschool & Cyber School Groups

Young Student Programs

High School & Teen Programs

Guide Yourself

PORTABLE PROGRAMS 14

International Classroom

Virtual Programs

Unpacking the Past

Artifact Loan Box

Professional Development & Educator Resources

PLANNING YOUR VISIT 20

Field Trip Checklist

Museum Manners

Preparing for Your Trip & The Day of Your Visit

Plan Your Visit

Plan Your In-School Program

Curriculum Content Standards

Getting to the Museum

The Penn Museum is deeply grateful to the following partners whose generous support during the 2015–2016 academic year makes possible so many of the vibrant outreach and access programs offered:

THE DIETRICH W. BOTSTIBER FOUNDATION

THE COCA-COLA COMPANY

MARIE A. CONN, PH.D.

CONNELLY FOUNDATION

KRISTIN A. B. DAVIDSON, CGS84, GED88, GED01, AND
ROBERT M. DAVIDSON

DR. PAMELA P. FREYD, GED68, GR81, AND DR. PETER FREYD

GROW ANNENBERG FOUNDATION AND
GREGORY ANNENBERG WEINGARTEN

ANNA SOPHOCLES HADGIS, CGS70, G85, AND
NICHOLAS J. HADGIS, PH.D., PAR

DR. GARY HATFIELD AND DR. HOLLY PITTMAN

INSTITUTE FOR MUSEUM AND LIBRARY SERVICES

DIANE V.S. LEVY AND ROBERT M. LEVY

CHRISTIAN R. AND MARY F. LINDBACK FOUNDATION

ESTATE OF ELLEN COLE MILLER

NATIONAL ENDOWMENT FOR THE ARTS

PALISADE CAPITAL MANAGEMENT

PENNSYLVANIA HISTORICAL AND MUSEUM COMMISSION

PHILADELPHIA CULTURAL FUND

WILLIAM L. POTTER, WG88, AND JOANNE S. RUCKEL, WG88

SCHOLLER FOUNDATION

M. TRUDY SLADE

DISCOVER THE PENN MUSEUM

Housing one of the world's greatest collections of ancient artifacts from all over the globe, the Museum illustrates the human story: *who we are and where we came from*. As part of the University of Pennsylvania, the Penn Museum is on the forefront of current research. Come to the Museum to transform your understanding of the human experience.



WHAT CAN ARCHAEOLOGY TEACH MY CLASS?

Archeologists aren't treasure hunters; they're evidence seekers. Artifacts help archaeologists reconstruct human history. While at the Museum, your students will sharpen their observational and analytical skills as they learn to see ancient artifacts as evidence about the past.

WHAT CAN ANTHROPOLOGY TEACH MY CLASS?

Anthropology is the study of humankind, past and present. A trip to the museum helps your students appreciate how culture affected people in the past and how it affects their lives today.

GALLERY CHANGES

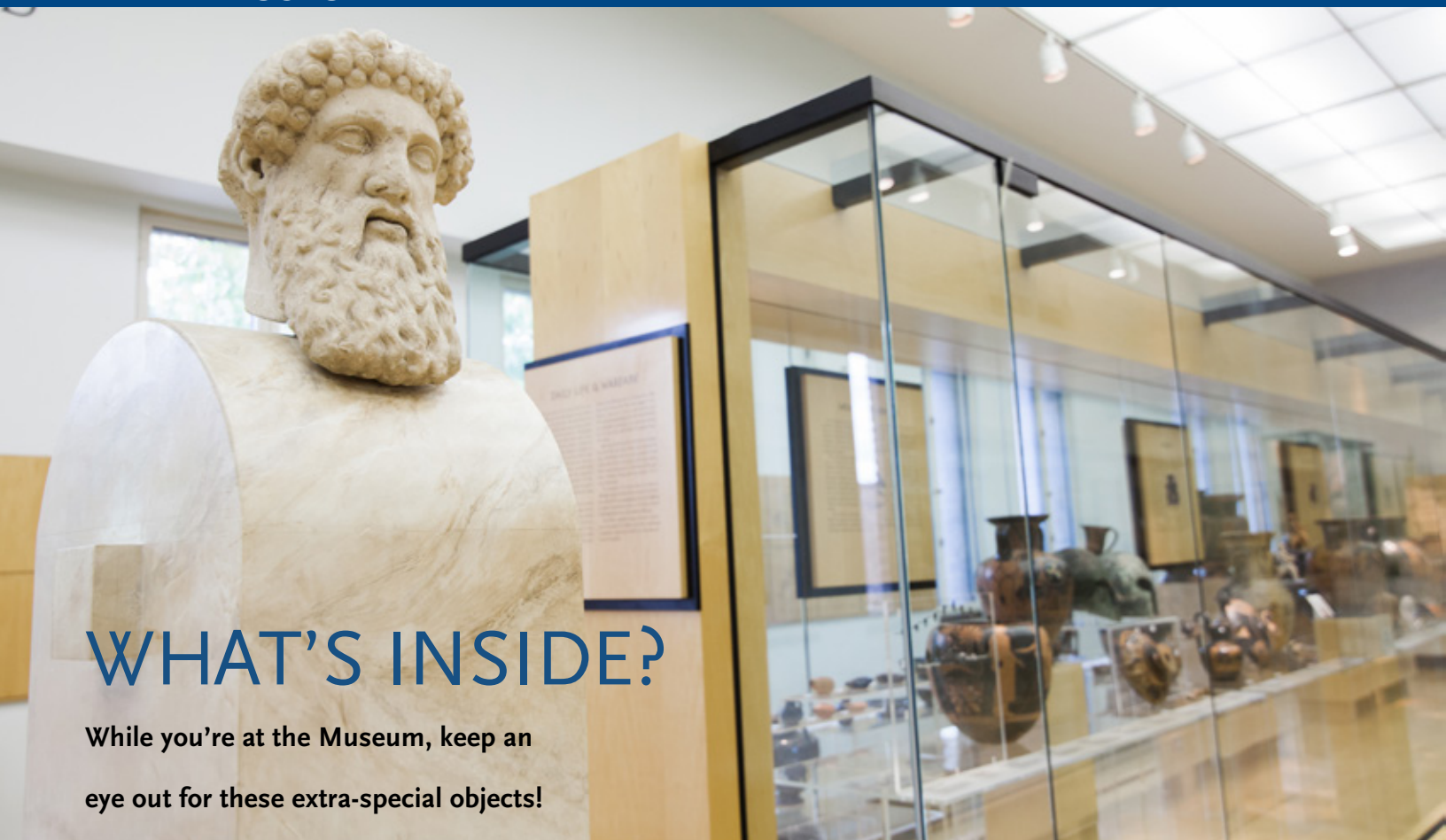
We are preparing a new permanent gallery featuring our ancient Middle East collections. As a result, **we will close our *Iraq's Ancient Past (Mesopotamia)* exhibition in January 2017** to prepare the artifacts.

Our neighbor, the University of Pennsylvania Health System, is also building something new. Construction behind our building has required us to take a few artifacts off display for their protection. But worry not – the vast majority of our collection is still on display!

The Learning Programs Department will ensure you have an enjoyable and informative experience as the renovations occur. For the latest information on gallery closures, please visit www.penn.museum/visit/plan-your-visit.

WHAT'S INSIDE?

While you're at the Museum, keep an eye out for these extra-special objects!



EGYPT (SPHINX) GALLERY

SPHINX | 1279-1204 BCE

The sphinx of the pharaoh Ramesses the Great weighs more than eight cars and is at least 3,000 years old. The inscriptions on the chest and around the base give the five names of Ramesses II. The sphinx is just one of the dozens of artifacts on display related to the pharaohs of ancient Egypt.



EGYPT (MUMMIES) GALLERY

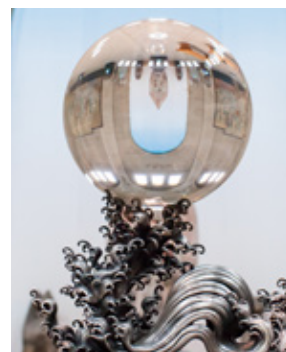
PUM II | 3RD CENTURY BCE

You can see several mummies in the Museum, but Pum was the only one that was autopsied. Researchers checked to see if the embalmers removed Pum's brain, a routine step in the mummification process. Affirmative – his skull is empty!

CHINA GALLERY

CRYSTAL SPHERE | 19TH CENTURY CE

The China Gallery features many masterpieces of Buddhist art, but the centerpiece is this crystal ball. It originally belonged to the last Dowager Empress of China, Cixi (Shi Shi). The sphere is not made of glass, but rather from pure quartz. It was shaped into a sphere through years of constant turning in a semi-cylindrical container filled with abrasive powders and water.



IRAQ'S ANCIENT PAST GALLERY*

BULL-HEADED LYRE | 2500 BCE

**Gallery closing January 2017*

This musical instrument of the ancient world rocked the very cradle of civilization! Excavated from beneath the sands of the Iraqi desert, once the location of the ancient city of Ur, this instrument is 4,500 years old. It is just one of the artifacts on display from the ancient royal tombs of Ur.

CANAAN AND ISRAEL GALLERY

SARCOPHAGUS | 1200-1150 BCE

This anthropoid—or human-shaped—coffin was excavated from Beth Shean, an ancient city in modern Israel and a crossroads of the ancient world for nearly 5,000 years. Museum expeditions to Beth Shean unearthed hundreds of artifacts, many of which are on display. Don't be fooled by that lone face on the coffin... several people would have been buried within!



AFRICA GALLERY

DANCE CREST |
20TH CENTURY CE

The Africa Gallery has a wide array of artifacts from all parts of the continent, including many masks. Among the Ejagham (Ekoi) people of West Africa, members of the Nsikpe association used this crest-style mask to enforce laws and maintain the peace. The mask was worn on top of the head and had to be tied on tight because the wearer would dance as part of ceremonies.



ROME GALLERY

THE PUTEOLI MARBLE
BLOCK | 102 CE

This artifact was once inscribed with a text honoring the Emperor Domitian. It described him as a competent ruler, but in reality, he was a tyrant, assassinated with a dagger. After his death, all physical traces of Domitian's rule were removed. But why waste

a good piece of marble? The reverse side was carved to honor Emperor Trajan, a ruler held in high esteem by the Romans.

MEXICO AND CENTRAL AMERICA GALLERY

STELA 14 FROM PIEDRAS
NEGRAS | 758 CE

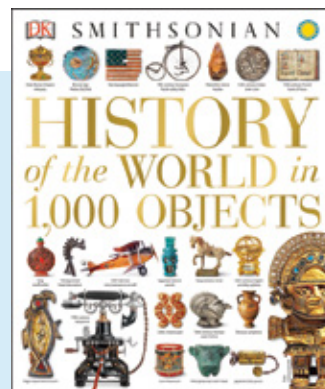
Meet "Black House Great Turtle," the fifth ruler of the Maya city Piedras Negras. This Maya stela tells the story of Great Turtle's ascension to the throne. Archaeologists believe that it's well preserved because it fell facedown into soft mud and stayed that way for more than 1,000 years. The gallery also includes artifacts from the Aztec and Toltec.



ETRUSCAN ITALY GALLERY

WARRIOR HELMET | 8TH CENTURY BCE

This gallery features several sets of artifacts found in Etruscan tombs. Pictured here is the helmet of an Etruscan warrior charioteer, which is accompanied in our galleries by a matching breastplate. The breastplate is made of only a single sheet of bronze, sufficient if you're up high in a chariot, but not as useful if you were engaged in the hand-to-hand combat favored by the Etruscans.



Bring artifact learning into the classroom. Pick up a copy of *History of the World in 1,000 Objects* at the Penn Museum Shop. The book features more than 200 artifacts from the Penn Museum Collection!



GUIDED TOURS

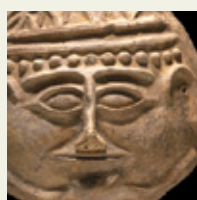
Learn more on your trip by booking a guided tour! Penn Museum tours feature opportunities to look closely at artifacts—primary sources for learning about the past—and discuss key concepts. Experienced museum guides lead your students through gallery highlights, share behind-the-scenes stories of the Museum, and answer questions, all in about an hour. This format provides an ideal way to address Common Core standards in Speaking & Listening as well as addressing content in World History, World Cultures, and United States History.

AGES	All ages (Storytime Expeditions available for K-3)
LENGTH	1 hour (K-3 groups, 45 minutes)
PRICE	\$2 per participant per tour + Group Admission (\$7 per student, \$12 per adult); 1 FREE adult per every 10 students (required adult to student ratio); All teachers FREE with school ID
GROUP SIZE	10 person minimum (groups with less than 10 will be charged for 10 participants) 30 person maximum (22 person maximum for Greece)
TIMING	Tuesday–Friday, 10:00 am to 4:00 pm
WHEN TO BOOK	Request your tour at least 6–8 weeks in advance. Deposits should be received at least 4 weeks in advance. Reservations must be finalized by the 10th of the month prior to your visit. (Example: October tours must be finalized by Sept. 10)

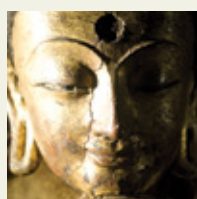
Choose from the following gallery tour options:



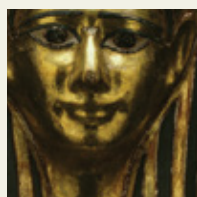
AFRICA: The continent of Africa is home to a diverse array of cultures. Masterpieces of mask making and artifacts from the Asante Kingdom are just some of the favorites in this gallery.



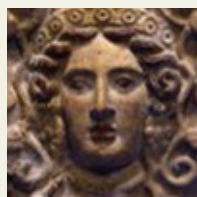
CANAAN AND ISRAEL: These cultures are crossroads of the ancient world, with strong influences from Egypt to the Near East. A model of an ancient house—with its 'kitchen,' 'office,' and 'pantry'—brings this gallery to life.



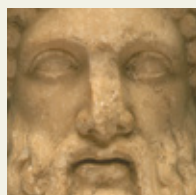
CHINA: See everything from oracle bones—the origin of Chinese writing—to the crystal ball of the Dowager Empress of China in this eclectic gallery. A beautiful collection of Buddhist artwork reveals the importance of Buddhism in China.



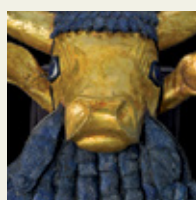
EGYPT: With one of the most impressive collections of Egyptian artifacts in the world, Penn Museum offers a one-of-a-kind Egypt tour including mummies, sarcophagi, and the largest sphinx in North America.



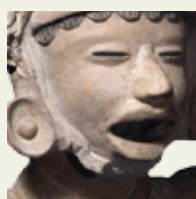
ETRUSCAN/ROMAN WORLD: Forefathers of the Romans, the Etruscans are an influential ancient civilization. This tour includes standouts from both the Etruscan and Rome Galleries, including real bronze armor.



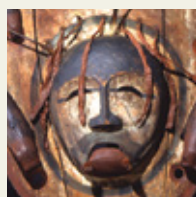
GREECE: Dozens of Greek painted vases and hand-minted coins introduce your students to everything from mythology to daily life in ancient Greece.



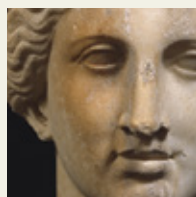
IRAQ'S ANCIENT PAST (MESOPOTAMIA): *Gallery closing January 2017.* Learn about the world's oldest civilization and its ancient people from the elaborate artifacts left behind in the royal cemetery found at the great city of Ur.



MESOAMERICA: Birthplace of the Maya and Aztec civilizations, Mesoamerica has a rich cultural tradition. Discover artifacts from an ancient ballgame, and stand in awe under the large stone stela monuments.



NATIVE AMERICAN VOICES: Interactive technology brings this gallery to life, introducing visitors to the diverse Native American people of today. Hear their voices as you discover cultural artifacts ranging from the Southwest to the Arctic.



ROME & ETRUSCAN ITALY: Get an inside look into the Roman world with glimpses of politics, religion, and art. Ancient materials of marble, metal, and glass tell the stories of this influential civilization.

SPECIAL THEMED TOURS

THE GOLDEN AGE OF KING MIDAS:

Exhibition closing November 2016. Discover the story of the real King Midas! This exhibit is a once-in-a-lifetime chance to see artifacts from the archaeological site of Midas's royal capital, Gordion. Archaeologists unlock King Midas's world and introduce your students to the kingdoms of ancient Turkey.

STORYTIME EXPEDITIONS:

Engage students from Kindergarten to 3rd grade with interactive readings of children's books in our galleries. Each 45-minute storytelling session includes a short tour and an opportunity to touch teaching collection artifacts related to the story. For details, see page 12.



INTERACTIVE WORKSHOPS

Delve further into the ancient world through experiential learning! Museum educators lead your students through demonstrations and hands-on activities that explore ancient cultures. Students learn how people uncover content knowledge about the ancient world by using artifacts as clues to unlock the past. Props and replica artifacts give students interactive experiences. Our formats provide opportunities to address Common Core standards in Speaking & Listening and Mathematical Practice, as well as addressing content in World History and World Cultures.

AGES	See workshop descriptions
LENGTH	1 hour
PRICE	\$100 per workshop (plus group admission, see page 13)
GROUP SIZE	30 student maximum
TIMING	Tuesday–Friday, 10:00 am to 3:00 pm
WHEN TO BOOK	Recommended: at least 6-8 weeks in advance. Required: reservations must be finalized by the 10th of the month prior to your visit. (Example: October workshops must be finalized by September 10th)

DIGGING UP ROME

Grades: 7–12

How do archaeologists interpret artifacts? Archival photos and video footage tell the story of Penn Museum excavations of the ancient Roman world. Students practice archaeological site interpretation, handle replica artifacts, and make observations and inferences to draw conclusions about the past.

MAKING A MOSAIC

Grades: 4–8

Discover the artistry of Roman mosaics in this hands-on workshop, where students learn all about the different types of this decorative art and how ancient artisans created them. Students will work in small groups, then as a class, to create one giant mosaic comprised of over 4,000 tesserae! The workshop incorporates math concepts, along with the study of ancient history.

MUMMY MAKERS

Grades: 5–9

Ever wonder how and why the ancient Egyptians mummified their dead? Learn how to be an ancient Egyptian embalmer and prepare Mr. Ulysses Penn for his journey to the afterlife! Using fabricated mummies, students will explore mummification through each step of the process, including brain removal, evisceration, desiccation, and wrapping. This workshop is demonstration-based and uses life-like mummies.

PREPARING FOR ETERNITY: EGYPTIAN FALSE DOORS

Grades: K–3

What did the inside of an ancient Egyptian tomb look like? What did people get to take with them into the afterlife? Students learn about hieroglyphs, tomb offerings, and false doors—ancient Egyptian passageways between the worlds of the living and the dead. Students then create their own false doors incorporating hieroglyphs and ancient Egyptian art motifs.



PRESERVING THE PAST

Grades: 4–9

What role does a conservator play in preserving the past? Students will not only learn the answer to this question, but will explore some core practices of conservation. View real-life examples of conservation in the Museum's collection and learn about the science behind deterioration and preservation. Then practice the basics of conservation with hands-on activities.

ACCESS PROGRAMS

The Penn Museum welcomes all types of learners to participate in Interactive Workshops. New Access programs include the Roman Marketplace, In Touch with Ancient Egypt, Touch Tours and Workshops, and a Faces Tour. See page 10 for Access Programs.

ACCESS PROGRAMS

Explore ancient cultures while reinforcing goals from your students' Individualized Education Programs!

Our access programs intertwine academics with social and life skills and are appropriate for students with cognitive, sensory, motor, mobility, and behavioral disabilities. Each program is multisensory, aligned with the School District of Philadelphia's Low Incidence Curriculum, and is designed by a certified special education teacher. Modified versions of these programs can also be used with K–3 audiences.

ROMAN MARKETPLACE

Do as the Romans do and take part in an interactive ancient Roman marketplace. This workshop highlights social interaction, emotional response, and functional mathematics in a simulated marketplace. Students will wear togas, handle reproductions of ancient artifacts, and use all of their senses to shop the Roman market using differentiated budgets.

IN TOUCH WITH ANCIENT EGYPT

Become an ancient Egyptian embalmer and help prepare Mr. Ulysses Penn for his journey to the afterlife. Students will explore each step of the mummification process, including brain removal, evisceration, desiccation, and wrapping. Tools of the trade will be available for students to touch and a Jello brain for teachers to scramble. Using their measuring skills, students create natron to take back to the classroom so they may desiccate a piece of fruit. This workshop uses life-like mummies.

FACES TOUR

How do humans use their faces to convey emotion? Designed for students on the autism spectrum, this tour uses artifacts in our galleries to help improve upon students' abilities to recognize facial identity, expression, and social cues. Students will engage in role play, drawing activities, and be asked to talk about their own experiences with emotion.

MULTISENSORY GUIDED TOURS

Explore the lives of the ancients through a guided tour of the artifacts they left behind. Our access tours are interactive and multisensory, incorporating storytelling, props, and role play. Please contact us to discuss your gallery preference.



TOUCH TOURS AND WORKSHOPS

Using their sense of touch, students with visual impairments are able to explore select objects in the Egypt galleries in addition to artifact reproductions. A hands-on workshop explores facets of ancient Egyptian history, from the process of mummification to hieroglyphs. All touch tours and workshops are co-taught by guides who are blind or visually impaired and guides who are sighted. To book, contact our partner, Philly Touch Tours, at phillytouchtours.com/contact.

ACCESS RESOURCES

Request special tools to help your students enjoy their trip. Tools include a customizable visual schedule, social stories, and a collection of calming and engagement objects to borrow. To request resources, email education@pennmuseum.org or put your desired tools in your Field Trip Request form.

HOMESCHOOL & CYBER SCHOOL GROUPS

The Penn Museum welcomes homeschool and cyber school groups to use the Museum as a resource for student learning. No matter the size of your group, make a reservation in advance to be eligible for our discounted group rate. Guided tours of our galleries are available for \$90 for 10 or fewer total participants. Use our Educator Resources (page 19) to prepare for your trip.



ARCHAEOLOGICAL ADVENTURES HOMESCHOOL DAYS

Throughout the year, we welcome homeschool and cyber school families to participate in our themed Archaeological Adventures. Explore our galleries with a guided tour, join a hands-on workshop, sit in on a storytelling session, or make artifact-inspired artwork. This year's themes are:

SEPTEMBER 21: Exploring the Middle East

OCTOBER 19: Encountering Ancient Egypt

JANUARY 11: Celebrating Chinese New Year

MARCH 8: Traveling North America

JULY 12: Journeying Around the World

AGES	Best supports K–middle school; for older students, schedule your own visit
LENGTH	Archaeological Adventures last 3 hours; you choose how long you stay
PRICE	Program admission \$12 per student; 1 FREE adult per family; \$12/additional adults
GROUP SIZE	Can vary
TIMING	10:00 am to 1:00 pm select Wednesdays throughout the year
WHEN TO BOOK	Recommended: at least 3-6 weeks in advance. Reservations must be finalized by the Friday before each Homeschool Day.
HOW TO BOOK	View the Events Calendar (http://penn.museum/events-calendar.html) on the Homeschool Days of your choice to reserve your spots online.



YOUNG STUDENT PROGRAMS

Studies show that children exposed to museums at a young age become life-long museum goers.

Bring your K–3 class for a Storytime Expedition, Interactive Workshop, or International Classroom program. Also view page 10 for Access Programs that can be modified for younger audiences.

STORYTIME EXPEDITIONS

Grades: K–3

Storytime Expeditions offer an immersive learning experience to introduce children to the Museum. Hear myths, folktales, and legends specially selected to introduce cultural themes and traditions, surrounded by real ancient artifacts from that part of the world. Each 45-minute storytelling session includes a short tour and an opportunity to touch artifacts related to the story. Storytime Expeditions are available in any of the Museum’s signature galleries. Storytime sessions can also be brought in to your classroom on a limited basis. For booking information, see page 6.

SUGGESTED ITINERARIES FOR K–3 CLASSES:

China Storytime + The Race for the Chinese Zodiac

Egypt Storytime +
Preparing for Eternity: Egyptian False Doors

Japanese Storytime + My Life in a Bento Box:
Ethnography of Japanese School Lunch

Native American Voices Storytime +
Eastern Woodlands Culture: Pre and Post Contact

Great for larger groups: Aesop’s Fables or Raven’s Feast
Puppet Show with a local puppeteer!

To read full descriptions about these International Classroom programs, visit www.penn.museum/teachers-and-students/k-12-educators/international-classroom/overview.

HIGH SCHOOL & TEEN PROGRAMS

At the Penn Museum, high school students not only learn world history, but practice the methods behind understanding humanity's past. These programs offer opportunities for object-based learning, critical dialogue, and historical empathy.

For teens interested in learning at the Penn Museum independently of their school, we also offer year-round programs. For more details, contact us at teens@pennmuseum.org or view our website: www.penn.museum/teachers-and-students/k-12-educators/teen-programs.

TEEN AMBASSADORS

The Teen Ambassadors is a new free after school program in which Philadelphia area teenagers in grades 9-12 will explore the content and work of the Penn Museum in order to create programming for teen visitors.

SUMMER TEEN SUMMER INTERNSHIPS

This opportunity is for current high schoolers who are interested in museums, education, archaeology, anthropology, and more. Internships provide rich opportunities to develop career skill sets and offer practical experiences with Museum personnel and faculty.



SUGGESTED ITINERARIES FOR HIGH SCHOOL CLASSES:

**Iraq's Ancient Past Tour +
Not Quite as Easy as ABC: Learning to Write Sumerian**

**Rome & Etruscan Italy Tour +
Exploring the Classical World through Artifacts**

China Tour + Chinese Characters: A Journey Across Time

Africa Tour + Swahili 101: Celebrate Your Family with Swahili Language

Native American Voices Tour + Stories from Native American Voices: People – Here and Now

**Egypt Tour +
CSI: Ancient Egypt, Forensic Anthropology 101**

GUIDE YOURSELF

Explore the Museum at your own pace. You can plan an entirely self-guided visit, or check out the galleries before or after your scheduled programs. Our free Educator Resources (page 19) include gallery guides and activities that tie into content standards so you can make the most of your visit.

AGES	All ages
LENGTH	Recommended length of one hour or less.
PRICE	\$7 per student, \$12 per adult Group Admission; 1 FREE adult per every 10 students. All teachers FREE with school ID
GROUP SIZE	ANY SIZE (please divide into smaller groups to explore the galleries)
TIMING	Tuesday–Friday, 10:00 am to 4:00 pm
WHEN TO BOOK	50 or fewer people: 4 weeks in advance. More than 50 people: 6-8 weeks in advance.



INTERNATIONAL CLASSROOM

Want to learn more about global cultures, both past and present? Our International Classroom educators will take you to amazing places around the world through three types of intercultural programs.

WORLD CULTURE EDUCATORS

Learn more about a country directly from a person who resided there! This series provides interactions between your students and educators from diverse countries including China, Chile, Greece, Morocco, Japan, Kenya, and more. A wide range of fascinating topics includes traditional holiday rituals, ancient writings, school and youth engagement, and global diasporas. Through captivating visuals and interactive approaches, World Culture Educators will immerse your students in intercultural dialogues and explore multiple viewpoints.

ARCHAEOLOGY AND ANTHROPOLOGY EXPERTS

Interact with real working archaeologists and anthropologists! This series offers a rare opportunity for your students to meet our world-class museum-affiliated scholars. Topics in this series include ancient Egyptian mummification, daily life in ancient Egyptian cities, cuneiform writing, inquiry-based analyses of Greek artifacts, material cultures from the Navaho Nation, physical and forensic anthropology, and more. In this series, our archaeological experts share their experiences in the field through visuals, guide students through object analyses, and facilitate interactive discussions.

CULTURAL PERFORMERS

Local performing artists introduce cultural rituals, traditions, and stories from around the world. These programs offer a range of arts to educate students about vibrant cultural traditions, including puppet theater on Aesop's Fables, traditional dances from India and Middle East, and African folktales with Swahili proverbs.

Find the full list of program descriptions at <http://www.penn.museum/teachers-and-students/k-12-educators/international-classroom/overview>.

PROMOTING GLOBAL COMPETENCE

International Classroom Program addresses knowledge, skills and awareness that are essential to succeed in the increasingly interconnected global society. Our workshops incorporate key 21st Century Skills such as world languages, multiple perspectives, intercultural communication, and appreciation for cultural diversity.

INTERNATIONAL CLASSROOM PROGRAMS ARE OFFERED IN THREE WAYS:

- Meet an educator at the Museum.
 - Have an educator visit you in your classroom or community center.
 - Blend International Classroom with Virtual Programs!
- Read more on page 16.

AGES	All ages
LENGTH	1 hour
PRICE	<p>In the Museum: \$100 per 30 students plus group admission (\$7 per student; \$12 per additional adult; all teachers with school ID are FREE)</p> <p>In your classroom or community: \$200 per 30 students for a location within 20 miles of the Penn Museum; \$300 + travel cost per 30 students for a location beyond 20 miles from the Penn Museum (50% discount applies for additional sessions); Large assembly format for up to 200 students is also available upon request.</p> <p>Virtual International Classroom Workshops: \$200 per session per 30 students</p>
GROUP SIZE	Flexible (In the Museum: one adult REQUIRED for every 10 students)
TIMING	<p>In the Museum: Tuesday–Friday, 10:00 am to 4:00 pm depending on speaker availability</p> <p>In your classroom or community: Flexible depending on speaker availability</p> <p>Virtual International Classroom Workshops: See page 16</p>
WHEN TO BOOK	Six to eight weeks in advance



VIRTUAL PROGRAMS

Experience the Penn Museum without leaving your classroom! Use technology to bring the Museum to your school if you aren't able to visit or supplement your visit to the Penn Museum with a virtual workshop. Through the use of video conferencing, a museum educator beams into your class to provide a museum lesson in real-time. Virtual programs are designed to involve students through inquiry, object analysis, and demonstrations. And not to worry, we can connect with most classrooms without the need for special equipment.

VIRTUAL WORKSHOPS

Daily Life in Ancient Rome: Grades 5–9

Embark on a virtual tour of a lavish Roman home and learn the real Latin terms for the rooms. Students will look closely at real Roman artifacts that would have been used inside the house to better understand the day-to-day lives of Romans.

Mummy Makers: Grades 5–9

Students will learn how and why ancient Egyptians mummified their dead by adopting the role of apprentice to an ancient Egyptian embalmer. Using fabricated mummies, students will explore the artificial mummification process as they prepare Mr. Ulysses Penn for his journey to the afterlife!

Preserving the Past: Grades 6–10

Learn how we care for our ancient artifacts as students investigate the science behind deterioration and preservation by practicing the basics of conservation, viewing examples of conservation in the Museum's collection and the incredible work of Penn Museum conservators!

VIRTUAL INTERNATIONAL CLASSROOM WORKSHOPS

Discovering Civilizations with Real Archaeologists and Anthropologists: Grades: 9–12

Bring a real archaeologist or anthropologist into your classroom virtually to share his/her in-depth expertise and experiences in the field through photos, artifacts, and interactive conversations. Choose from the programs listed below and read full descriptions at <http://www.penn.museum/teachers-and-students/in-your-classroom/virtual-programs>.

- Exploring the Classics through Artifacts
- Archaeology of Ancient Egypt
- Sweet Home Egypt
- Teeth, Diet, and Evolution
- The Evidence of Human Evolution



LENGTH	1 hour
PRICE	\$125 per 30 students. Book two or more and receive 10% off of your package! Virtual International Classroom program costs: see page 15
GROUP SIZE	We recommend a 30-student maximum
TIMING	Monday–Friday, 8:00 am to 3:00 pm
WHEN TO BOOK	By the 10th of the previous month. (Example: October workshops must be finalized by September 10th)
HOW TO BOOK	Contact outreach@pennmuseum.org to request virtual workshops.



UNPACKING THE PAST

GROW ANNEBERG FOUNDATION

Unpacking the Past connects Philadelphia’s Title I middle school classrooms studying ancient Egypt or ancient Rome with the world-renowned collections and teaching resources of the Penn Museum. All aspects of *Unpacking the Past* are FREE to teachers, students, and families.

PART 1: CLASSROOM OUTREACH LESSON

- Experienced educators engage your students in a fun, hands-on lesson in your classroom
- Students practice the skills of observation and inference – the same skills that archaeologists use to “unpack the past”
- Students receive an overview of what to expect when they come to the Museum

PART 2: PENN MUSEUM TRIP AND WORKSHOP

- Field trip participants ride to the Penn Museum in free buses
- Programs are led by the same educators who visited the class
- Students explore our Egypt or Rome galleries with a guided interactive tour, then participate in a classroom workshop on mummification or Roman archaeological excavations
- All activities incorporate critical thinking and directly relate to the Common Core skills emphasized in 7th grade or the Low-Incidence curriculum for special needs education.

PART 3: EXTEND THE LEARNING

- All students and teachers receive a free one-year dual-adult family membership to the Penn Museum.
- Our educators can bring activities and artifacts to enhance your school events such as back to school nights or report card conference days
- Teachers can borrow an Artifact Loan Box for use in their classrooms or bring their students back to the Museum for a second self-guiding trip (buses not included)
- Middle school teachers can enjoy in-depth Professional Development opportunities. See page 18 for details.

AGES 7th grade* classrooms (including AS/LSS/MDS classes) from Philadelphia public and Title I charter schools (*depending on when your school studies ancient civilizations, 6th or 8th grade may participate instead)

LENGTH Outreach: 45 min – 1 hour
Museum Visit: 1 hour tour + 1 hour workshop

PRICE **FREE with FREE transportation**

GROUP SIZE Flexible (we generally work with the entire 7th grade). One adult is **REQUIRED** for every 10 students for the field trip portion of the program.

TIMING Outreach: Any time during school hours
Museum: Tuesday – Friday, 10:00 am to 2:00 pm (Mondays limited access)

WHEN TO BOOK You can book any time, but availability is limited. We recommend booking early in the school year.

HOW TO BOOK Email schools@pennmuseum.org for a link to our special booking survey.



PROFESSIONAL DEVELOPMENT AND TEACHER RESOURCES

Penn Museum offers a range of professional development opportunities for educators who are interested in increasing content knowledge, discovering new resources, building pedagogical approaches, and collaborating across schools and institutions. Our professional development programs provide creative ideas for integrating museum resources into your curricula across multiple disciplines, give direct access to archaeological and anthropological experts on diverse topics and world regions, facilitate a supportive learning community of educators, and offer Act 48 credits. View our website's professional development page for upcoming opportunities: www.penn.museum/teachers-and-students/teacher-resources/professional-development.

CUSTOMIZE YOUR PROFESSIONAL DEVELOPMENT EXPERIENCE

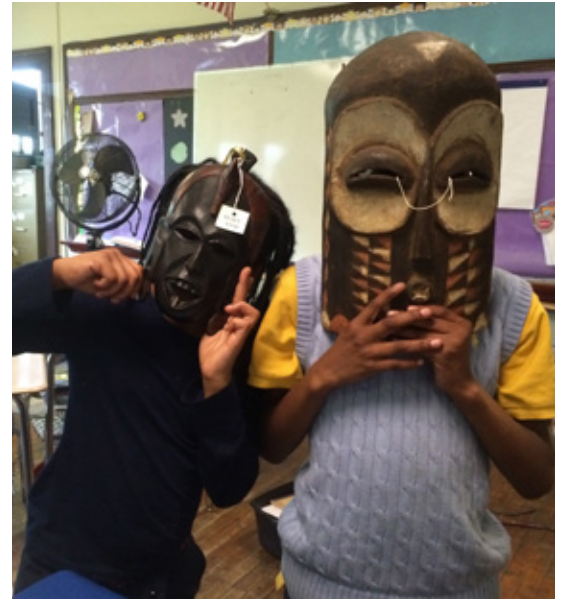
Our educators can work with you to design a professional development experience that is perfect for your staff or group. Choose from expert talks, gallery tours, and interactive workshops designed specifically to meet your group's professional learning goals. For more information, email education@pennmuseum.org.

UNPACKING THE PAST TEACHER PROFESSIONAL DEVELOPMENT

Throughout the year, all Philadelphia Title I middle school teachers are invited to attend *Unpacking the Past* professional development events at the Penn Museum. All professional developments offer Act 48 credits, free parking, and free meals. Contact schools@pennmuseum.org for upcoming dates or view our website's professional development page.

ARTIFACT LOAN BOX

Enhance your classroom curriculum with the Penn Museum's Artifact Loan Box Program. Loan Boxes are designed to provide a comprehensive resource for teachers to further engage their students in history, art, and world cultures. Through studying and touching replica artifacts, students can form deeper connections to objects, cultures, and conservation.



AGES	All ages
LENGTH	30 days (one month)
PRICE	\$75 for one-month loan
TIMING	Flexible (Teacher must pick up and return Loan Boxes in person)
WHEN TO BOOK	Reservations must be finalized by the 10th of the month prior to your Loan Box loan month.

WHAT DO YOU GET IN AN ARTIFACT LOAN BOX?

- Penn Museum's Education Collection artifacts (8-10)
- Supplementary materials (articles, worksheets, etc.)
- Lesson plans and vocabulary lists
- Visual teaching aides

ARTIFACT LOAN BOXES AVAILABLE TO RENT:

Egypt	China
Mediterranean	Africa
Mesopotamia	Native American

EDUCATOR RESOURCES

Thinking about ways to prepare your students for their experience with the Penn Museum or supplement your classroom teaching? Explore our FREE online resources! Bring our Museum-Ready Activities on your trip to help your students explore. Check out this standards-based teaching material at <http://www.penn.museum/teachers-and-students/teacher-resources>.

CURRICULUM ENHANCERS:

Educator's Guides: *Native American Voices* and *Secrets of the Silk Road*

Content Resources: Africa, Egypt, Ancient Math, and Mesoamerica

PREPARING YOUR CLASS:

Gallery Guides: Africa, Buddhism, China, Egypt, and Iraq

Activities: Write Like an Egyptian, Write Like a Babylonian, and Ancient Crossword Puzzles

MUSEUM READY ACTIVITIES:

Self-Guide Brochure: Penn Museum's Greatest Hits

Gallery Guide: The 10 Things You Didn't Know About the Penn Museum

Activity: Riddles Scavenger Hunt

FIELD TRIP CHECKLIST

Follow this checklist to make sure you and your students are prepared for your trip.

CHECK	TASK
✓	A MONTH OR MORE BEFORE YOUR TRIP: Receive Group Visit Confirmation & Visit Information.
	Schedule bus(es) or other transportation.
	Secure chaperones (one chaperone for every 10 students).
	Send 50% deposit within two weeks of receiving contract. Full payment is due the day of your program(s).
	Review Museum Manners (page 22) with students and chaperones.
	Assign students and chaperones to groups for their Museum programs according to provided itineraries.
	Assign students and chaperones to small groups for self-guiding gallery time (maximum 10 students with at least one chaperone).
	TWO WEEKS BEFORE YOUR TRIP: Notify the Museum if there are any members in your group with special needs, including those using wheelchairs or crutches.
	Let us know whether students will be permitted to visit the Penn Museum Shop and Café.
	Contact the Museum with a final head count.
	THE DAY BEFORE AND DAY OF THE TRIP: Remind students to bring packed lunches.
	Students should leave bookbags/large purses at school if possible – they cannot bring them in the galleries. Groups are provided with bins to stow lunches and large personal items. The Museum is not responsible for lost or stolen personal items.

BEFORE YOU BOOK, CONSIDER:

- How many chaperones will you need? (1:10 ratio required)
- How many groups will your students break into for programs? (Most programs allow for 30 students)
- Which galleries would you like to visit? What programs do you want?
- Will you eat lunch onsite?
- Do your students want to visit the Penn Museum Gift Shop?

MUSEUM CAFÉ

Students should not eat in the Museum Café. If you would like to purchase lunches onsite, please let us know within two weeks of receiving your contract. Schools should contact the Café directly at www.cxra.com/contact to make arrangements in advance to purchase prepared lunches. Read more about lunches on page 21.

PENN MUSEUM SHOP

Please decide ahead of time if your students will visit the Museum Gift Shop and inform us of your decision two weeks before your scheduled visit. Advance notice when school groups will be shopping helps us to make sure everyone can visit. Large bags may not enter the Shop, as there are glass cases and displays. Please divide the students into smaller groups. A maximum of 10 students may visit the Gift Shop at a time, with at least one chaperone present.

SPECIAL NEEDS

When you book your visit, please let us know if anyone in your group has special needs. If a group member uses a wheelchair or crutches, please also tell us in advance. Learn more about accessibility at the Penn Museum here: <http://www.penn.museum/visit/accessibility>.

PREPARING FOR YOUR TRIP

CANCELLATIONS

All cancellations must be submitted in writing at least two weeks in advance. Email cancellations to education@pennmuseum.org as phone messages will NOT be accepted as cancellations. Cancellations made two weeks or more in advance will receive a full refund. Cancellations made less than two weeks in advance will receive a partial refund of the deposit, with a \$50 cancellation fee withheld. Repeat late cancellations may result in a school's inability to book future visits.

WEATHER POLICY

If a Museum visit is canceled due to inclement weather on the day of the visit, the group can receive a full refund, or can reschedule the visit at no cost. Please call the Learning Programs Department (215.746.6774) immediately if you need to cancel due to inclement weather. The Museum also reserves the right to cancel trips due to inclement weather.

THE DAY OF YOUR VISIT

STUDENT DROP OFF & PARKING

Please view the back cover of the Trip Planner for a map and details on student arrival and parking.

ARRIVAL TIME

Plan to arrive 10 to 15 minutes before the scheduled start time of your visit to settle in before your adventure in the Penn Museum. If you need to contact the Learning Programs Department on the day of your trip, please call the main desk at 215.898.4001 to speak to someone immediately. If you arrive late, the Museum will try to provide the full content of your programs. However, your programs may be shortened depending on staffing time and other scheduled groups. If you are 30 minutes or more late for your programs, they may be cancelled.

EATING LUNCH

Students may bring bagged lunches. Lunch storage bins and cubbies are available for your group to store their lunches while they are in the galleries. The Group Dining area is available to groups on a first come, first served basis. Additional space is available in Warden or Mosaic Garden (weather permitting). Please expect to share the lunch spaces with other groups when you are here and guide students to sit at as few tables as possible. There are vending machines with candy, snacks, and drinks in the Group Dining area.

CURRICULUM CONTENT STANDARDS

Want to gain a better idea of what your students will be learning during their day at the Penn Museum? Would you like help integrating the trip into the rest of your unit? Visit our website for a look at abbreviated lesson plans of all our programs, which include standards. For a quick overview, refer to the table below.

STANDARDS	DOMAINS ADDRESSED
Common Core	<ul style="list-style-type: none">• Key Ideas and Details• Integration of Knowledge and Ideas• Speaking & Listening
21st Century Skills	<ul style="list-style-type: none">• Global Awareness• Cross Disciplinary Thinking• Critical Thinking and Problem-Solving• Communications & Collaboration• Media Literacy
National Social Studies Curriculum Standards	<ul style="list-style-type: none">• Culture and Cultural Diversity• Time, Continuity, and Change• Global Connections• Power, Authority, and Governance
Next Generation Science Standards	<ul style="list-style-type: none">• Biological Evolution: Unity and Diversity• Earth and Human Activity• Engineering Design
Low Incidence Curriculum	<ul style="list-style-type: none">• Interpersonal Communication & Social Skills• Functional Academics• Domestic Maintenance

MUSEUM MANNERS

To make your class field trip an enjoyable experience, we developed Museum Manners to help prepare your students and chaperones. Discussing these guidelines with students and chaperones prior to their arrival will help them feel more comfortable at the Museum. Please respect these policies as you explore the galleries so that you and our artifacts remain safe.

UPON YOUR ARRIVAL:

- **Backpacks, large bags, and umbrellas are not permitted in the galleries.** You will be directed to stow these larger items in our Group Dining cubbies or classroom storage bins. When applicable, you will be asked to hang your jackets on coat racks. **WHY?** Large bags can accidentally bump artifacts and display cases. Coats and umbrellas can be wet or uncomfortable to carry.
- **Food, drinks, and gum cannot enter the galleries.** You will be directed to place your lunches in our Group Dining cubbies or classroom storage bins. Trash and gum should be disposed of in our garbage or recycling bins. **WHY?** Crumbs and spills can attract bugs, mice, and bacteria that can damage our artifacts.
- **Students MUST be divided into small groups that are supervised by a chaperone or teacher.** For student safety and engagement, we require chaperones to accompany students on their visit to the galleries, gift shop, and bathroom. All accompanying chaperones (one for every 10 students) should be aware of their group's itinerary. **WHY?** Students take cues from adults, so chaperone participation in museum rules and learning improves student behavior.

YOUR PROGRAM & TOUR EXPERIENCE:

- **Photographs should be taken at the end of your programs.** To teach others what you have learned, we encourage you to take pictures of objects AFTER your tour has finished. **WHY?** Taking photos during a tour distracts students from engaging with objects and can slow down the group.
- **All cell phones, tablets, and headphones should stay in your bag or pocket during our tours and programs.** Students can use these personal devices at their leisure during lunch or free time. **WHY?** Listening closely and volunteering answers will help students connect to the awesome artifacts being presented.

EXPLORING THE MUSEUM

- **Running, loud voices, and disruptive behavior endangers our artifacts and other visitors.** Please speak to your peers about objects and exhibitions, but do so at a low volume and use a normal walking pace. **WHY?** The museum is a place for other students, visitors, archaeologists, and researchers to study and work.
- **Objects, cases, and displays cannot be touched.** Our artifacts are old, rare, and fragile, so keep a safe distance (about 12 inches) from artifacts to avoid any accidents. **WHY?** The natural oils on our skin can cause harm to our artifacts over time.
- **Pencils are the only writing tools that can be used in the galleries.** We will have pencils available to visiting school groups if needed. **WHY?** Ink is difficult for our conservators to remove! With a drop of a pen you risk damaging an artifact.
- **Tour guides take the lead within the galleries.** If you run into a tour in progress, please avoid interrupting the guide. **WHY?** Many school groups learn about our objects by attending a tour in our Museum.



PLAN YOUR VISIT

THREE WAYS TO BOOK YOUR MUSEUM VISIT OR IN-SCHOOL PROGRAM!

Online form: www.penn.museum/k12programrequest | Email: education@pennmuseum.org | Phone: 215.746.6774

CONTACT INFORMATION/LOGISTICS

School name _____

School address _____

Trip Organizer's Name _____

Trip Organizer's Email _____

Trip Organizer's Phone number _____

Grade of students _____

Number of students _____

Number of adults _____

Date and time requested _____

MUSEUM VISIT COSTS

GROUP ADMISSION

\$7 per student; \$12 per additional adult; Teachers with school ID are FREE (One FREE adult for every 10 students)

WORKSHOPS AND INTERNATIONAL CLASSROOM: \$100 per 30 students

GUIDED TOURS: \$2 per person (including additional adults)

TOUCH TOUR AND WORKSHOP: \$200 per 15 students (2 hours)

SUGGESTED ITINERARIES

- Around the World in 120 Minutes:**
Guided Tour + International Classroom Program
- Egyptomania:** Egypt Guided Tour + Mummy Makers Workshop OR Preparing for Eternity Workshop
- All Roads Lead to Rome:** Rome Guided Tour + Making a Mosaic Workshop OR Digging Up Rome Workshop
- Global Collection, Global Connection:** Virtual Program + International Classroom + Loan Box
- Exploring Native America:** Native American Voices Tour + Native American International Classroom Educator OR Preserving the Past Workshop
- Illustrating Chinese Traditions:** China Guided Tour + Chinese New Year Rituals
- Build Your Own Double Feature:** Combine our offerings to create the perfect itinerary

INTERNATIONAL CLASSROOM

For a full list of available programs, visit www.penn.museum/teachers-and-students/k-12-educators/international-classroom

GUIDED TOURS

- Africa
- Canaan and Israel
- China
- Egypt
- Greece
- Intro to Archaeology
- Etruscan and Roman World
- Iraq's Ancient Past (Mesopotamia) *closes January 2017*
- Mesoamerica
- Native American Voices
- Storytime Expeditions
- The Golden Age of King Midas *Closes November 2016*

WORKSHOPS

- Digging Up Rome
- Making a Mosaic
- Mummy Makers
- Preparing for Eternity: Egyptian False Doors
- Preserving the Past

ACCESSIBILITY PROGRAMS

- Faces Tour
- In Touch with Ancient Egypt
- Multimodal Guided Tour
- Roman Marketplace
- Touch Tour and Workshop

PLAN YOUR IN-SCHOOL PROGRAM

INTERNATIONAL CLASSROOM

For a full list of available programs, visit www.penn.museum/teachers-and-students/k-12-educators/international-classroom

Your choice: _____

VIRTUAL PROGRAMS

- Daily Life in Ancient Rome
- Mummy Makers
- Preserving the Past
- Virtual International Classroom Workshops _____

LOAN BOX

- Africa
- China
- Mesopotamia
- Mediterranean
- Egypt
- Native American

* Please note outreach costs differ from Museum visit costs.



Penn Museum
UNIVERSITY of PENNSYLVANIA MUSEUM
of ARCHAEOLOGY and ANTHROPOLOGY

3260 South Street | Philadelphia, PA 19104

NON-PROFIT ORG.
U.S. POSTAGE

PAID
PERMIT #2563
PHILADELPHIA, PA

GETTING TO THE MUSEUM

LOCATION

The Penn Museum is located at 3260 South Street, at the corner of 33rd and South Streets in Philadelphia, PA, across the street from Franklin Field and the Hospital of the University of Pennsylvania.

STUDENT DROP OFF

Buses should drop off students in our Group (Kress) entrance unless given special directions. Only school buses can fit down the Group (Kress) Entrance driveway. Motor coach buses will need to unload on South Street or Convention Avenue. Due to hospital construction, the direction of traffic will change in the Group entrance this Fall. Buses enter from Convention Ave. Please view our drop-off instructions at www.penn.museum/teachers-and-students/k-12-educators.

PARKING

Parking in the Group (Kress) entrance lot is reserved for visitors with accessibility needs only and must be requested at the time of the reservation request. Those visitors arriving in cars can use several parking garages in the area. Buses are responsible for making their own parking arrangements. Download our parking suggestions at www.penn.museum/teachers-and-students/k-12-educators.

