

**PHILIPS**

Ultinon Pro6000 LED



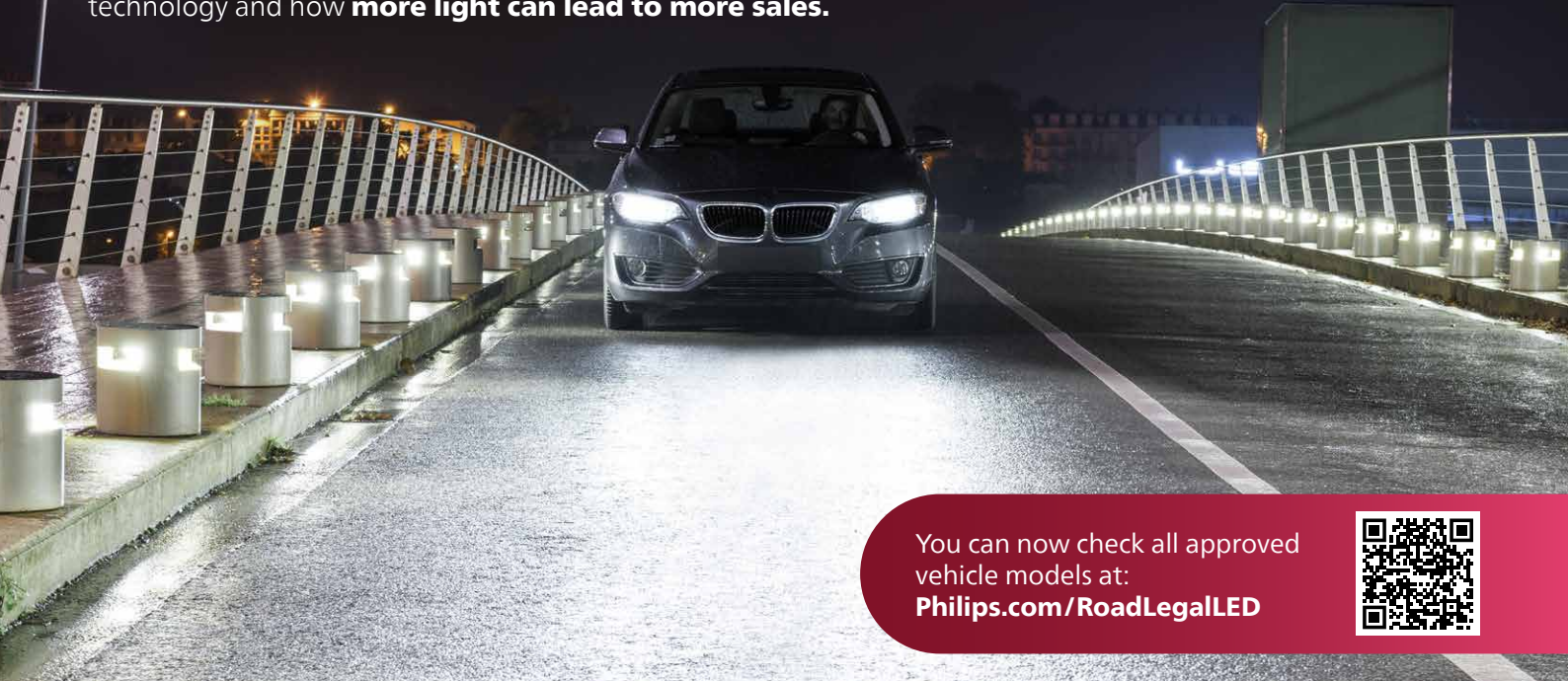
Info for  
workshop  
professionals 

Everything you  
need to know about  
road-legal  
**LED lighting**



# Turn night into day with the new Philips Ultinon Pro6000 LED!

Just by replacing their lights, your clients can now upgrade to our tested, safe and road-legal LED technology and experience breathtaking brightness as soon as they start driving<sup>1</sup>. Over the next few pages, we clearly explain everything that you, as a specialist workshop, need to know about upgrading from halogen to LED technology and how **more light can lead to more sales**.



You can now check all approved vehicle models at:  
[Philips.com/RoadLegalLED](https://www.philips.com/RoadLegalLED)



## Philips Ultinon Pro6000 LED

Replace your bulbs and drive away!  
**Road-legal LED lighting<sup>1</sup>**

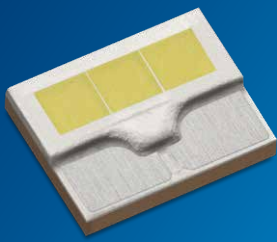


With the **Philips Ultinon Pro6000 LED** bulbs, it is now possible to convert your halogen headlight bulbs to safe and efficient LED lamps. Philips Ultinon Pro6000 LED bulbs are nationally approved in many European countries for certain vehicles only\* and can be approved in others under an individual approval procedure\*\*.

\* Philips Ultinon Pro6000 bulbs are approved for road traffic in the respective countries where approval exists and for listed range of vehicle models and lighting functions only. For more information about the legal requirement that apply in your country and to consult our latest compatibility list, visit [Philips.com/RoadLegalLED](https://www.philips.com/RoadLegalLED).

\*\* Visit [Philips.com/RoadLegalLED](https://www.philips.com/RoadLegalLED) for more information on the current procedure in your country and the list of eligible vehicles.

**Lumileds' exclusive high performance automotive LEDs**



**Up to 230% brighter light<sup>2</sup> and optimal light distribution**



**5800 K daylight color temperature for optimal visual comfort**



**Special light spectrum for improved contrast and sign visibility**



**SafeBeam technology for glare-free driving**



**Reliable, long-lasting performance thanks to innovative AirBoost cooling technology**



**Over 350 compatible vehicle models<sup>1</sup>**



**Coordinated white LED look for front headlights<sup>1</sup> and for interior lights<sup>4</sup>**



**Outstanding lifetime up to 6 times longer<sup>3</sup> than halogen**



[Philips.com/RoadLegalLED](https://www.philips.com/RoadLegalLED)

**2 years +1 extended warranty**

## Product and ordering information

Type	V	W	Base	Description	Application <sup>1</sup>	Order number	Packaging	GOC
H4-LED	12	18	P43t-38	Ultinon Pro6000 H4-LED	Low beam/high beam	11342U6000X2	X2 (2 bulbs)	01365131
H4-LED	12	18	P43t-38	Ultinon Pro6000 H4-LED	Low beam/high beam	11342U6000X1	X1 (1 bulb)	02422094
H7-LED	12	15	PX26d	Ultinon Pro6000 H7-LED	Low beam/high beam	11972U6000X2	X2 (2 bulbs)	01361331
H7-LED	12	15	PX26d	Ultinon Pro6000 H7-LED	Low beam/high beam	11972U6000X1	X1 (1 bulb)	02424494
W5W-LED	12	0.9	W21x9.5d	Ultinon Pro6000 W5W-LED	Position light/interior lighting <sup>4</sup>	11961HU60X2	X2 (2 bulbs)	01638630

Warranty conditions: applies only to manufacturing defects and to non-commercial use. Clients must register for the extended warranty within 3 months of purchase. For more information, visit [Philips.com/auto-warranty](https://www.philips.com/auto-warranty).  
<sup>1</sup> Legal notice: it is your own responsibility to ensure that the use of the LED retrofit lights complies with applicable local legal requirements. The Philips Ultinon Pro6000 LED bulbs are approved for road traffic in the respective countries where approval exists and for listed range of vehicle models and lighting functions only. For more information about the legal requirement that apply in your country and to consult our latest compatibility list, visit [Philips.com/RoadLegalLED](https://www.philips.com/RoadLegalLED).  
<sup>2</sup> Compared to the legal minimum standard for halogen lamps. <sup>3</sup> Compared to the average life of a standard halogen lamp. <sup>4</sup> Note on the W5W-LED: unlike exterior lighting functions, there are no legal restrictions on the lighting of the vehicle interior. The W5W-LED can be used freely as an alternative light source inside the vehicle.

# Breathtaking brightness

Now available for even more vehicle models thanks to smart accessories!



**LED adapter rings**  
**LED CANbus adapter**



As workshop professionals well know: every vehicle is different! That is certainly true when it comes to headlights. In order to further increase the compatibility of our LED technology, we have developed smart accessories for easy installation, allowing you to upgrade even more vehicle models with breathtaking LED lighting. Our **Philips LED adapter rings** ensure that the LED bulbs can be securely mounted in different headlight sockets and the **Philips LED CANbus adapter** eliminates inaccurate warning messages on the dashboard.

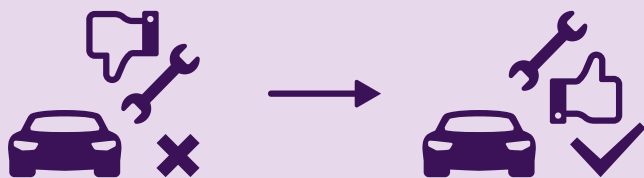
## LED adapter rings



## LED CANbus adapters



### Secure mounting and compatibility with even more vehicle models!



Prevent inaccurate dashboard warning



Avoid headlight flickering issues



Avoid headlight dimming issues

Description	Application <sup>1</sup>	Order number	Packaging	GOC
Type A adapter ring	H7-LED	11184X2	X2 (2 rings)	02009331
Type D adapter ring	H7-LED	11176X2	X2 (2 rings)	01681231
Type E adapter ring	H7-LED	11178X2	X2 (2 rings)	01679931
Type H adapter ring	H7-LED	11172X2	X2 (2 rings)	01630031
Type I adapter ring	H7-LED	11179X2	X2 (2 rings)	01683631
Type K adapter ring	H7-LED	11180X2	X2 (2 rings)	01675131
Type N adapter ring	H7-LED	11183X2	X2 (2 rings)	01636231
Type P adapter ring	H7-LED	11182X2	X2 (2 rings)	01677531
CANBus adapter	H7-LED	18952X2	X2 (2 adapters)	72837794
CANBus adapter	H4-LED	18960X2	X2 (2 adapters)	72831594

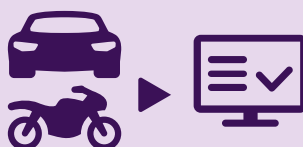
### Find the right accessories easily

Visit our compatibility list



[Philips.com/RoadLegalLED](https://philips.com/RoadLegalLED)

Check approval and find suitable accessories



For easy installation, follow the step-by-step instructions



<sup>1</sup> The Philips Ultinon Pro6000 LED light is approved for road-use only if it is installed, where necessary, with genuine Philips accessories. Please check the compatibility list to see if additional accessories are required for your vehicle. For more information, visit [Philips.com/RoadLegalLED](https://philips.com/RoadLegalLED).

# 5 steps to become an LED specialist workshop!

We can help you become an LED specialist workshop. Below, we explain in **5 steps** everything you need to know about **road-legal LED lighting**. With just a few simple steps, you can **increase your sales and make your clients happy**.

## 1.

**Make sure that advertising material is clearly visible** and offer LEDs plus installation at a fixed price!

Enter your chosen fixed price yourself in the designated field of the advertising material.



## 2.

Talk to your **clients** and **ask them:**

„Did you know that you can **legally and cost-effectively** switch your vehicle lights for **bright LED lighting** today?“

„We will **check whether your vehicle is homologated for replacement** and take care of **installing and adjusting the lights** – all included in the price, no surprises!“

## 3.

Explain to your clients about **the benefits of LED lighting!**

You can find further benefits on page 3 and in the FAQ section from page 10.

**Philips Ultinon Pro6000 LED** offers your clients:



**230% brighter light<sup>2</sup>,**  
without glare

**Identification of hazards**  
in good time

**5800 K daylight-like**  
white light

**6-time longer duration<sup>3</sup>**  
than halogen

<sup>1</sup> Legal notice: is your own responsibility to ensure that the use of the LED retrofit lights complies with applicable local legal requirements. Philips Ultinon Pro6000 LED bulbs are approved for road traffic in the respective countries where approval exists and for listed range of vehicle models and lighting functions only. For more information about the legal requirement that apply in your country and to consult our latest compatibility list, visit [Philips.com/RoadLegalLED](https://www.philips.com/RoadLegalLED) <sup>2</sup> Compared to the legal minimum standard for halogen lights. <sup>3</sup> Compared to standard halogen lights.

# 4.

## How to **get your local approval:**



### Vehicle model included in the list?



Visit **Philips.com/RoadLegalLED** and check whether your client's vehicle model is included in the compatibility list and whether additional accessories such as adapter rings or CANbus adapters are required.



### Headlight approval number matched?



Check that the approval number of the headlight is included in the compatibility list.

**XX:** 1–2 digit number, **YYYYY:** 4–5 digit number

**Note:** The only decisive factor for approval is that the headlight approval number matches. The vehicle data is used only to make it easier to identify the vehicle.



### General Design Certification (ABG) downloaded?



Scan the QR code on the top of the packaging, then follow the steps to authenticate the product and download the ABG certificate.



### ABG printed and handed over to the client?



Print out the ABG and give it to your client. Your clients must carry the printout with them every time they use their vehicle.



**All the criteria for road approval have been met!**

# 5.

## Halogen lights out, **LED lights in!**



The unique, compact design of our bulbs takes minimal space in the headlights and can be installed by workshop professionals in just a few simple steps. Just like replacing conventional halogen lights.



# Our innovative LED technology at a glance:



## Philips Ultinon Pro6000

### OEM LEDs

High-performance LEDs exactly where the halogen filament normally sits.

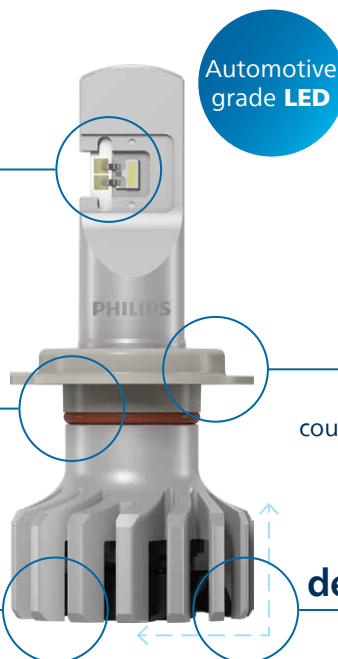
### Compact one-piece design

The bulb and heat sink are made from a single piece.

### Smart cooling technology

Reliable, long-lasting performance through active cooling.

Automotive grade LED



Philips Ultinon Pro6000 H7-LED

### H7 center ring (PX26d)

Can be unlocked by turning counterclockwise and pulled upward<sup>1</sup>.

### Small installation depth, smaller diameter

Built-in drivers ensure compact dimensions and facilitate installation.



Standard H7 halogen bulb dimensions



Images are for illustration purposes only. Comparison using the example of H7-LED and H7 halogen. <sup>1</sup> Only required for installation in some vehicle models.



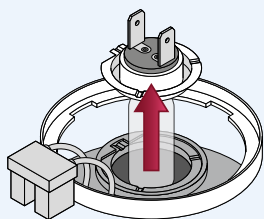
# Replacing halogen with LED bulbs is just as simple!



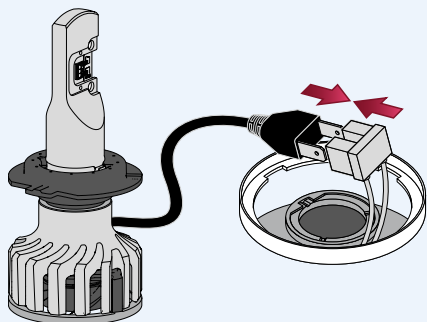
**Please refer to the user manual of the vehicle concerned**

To replace the light bulbs follow the instructions in the vehicle's user manual as usual. When replacing the bulbs, you must follow the installation steps applicable to the vehicle in the installation instructions for LED bulbs and, if necessary, the additional steps for fitting the specific accessories (adapter ring/CANbus adapter). The step-by-step installation instructions are included in the packaging.

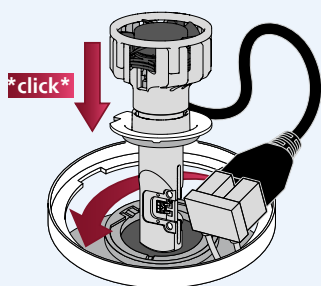
## Installation using spring



**Remove the halogen bulb**

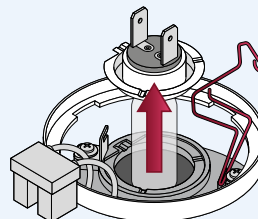


**Connect the vehicle plug to the LED cable**

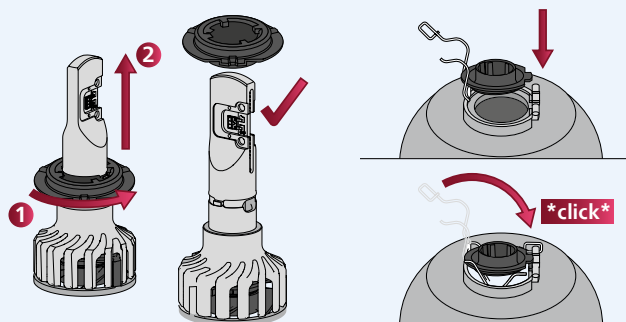


**Insert the LED bulb into the headlight spring bracket** and place the cable under the headlight cover.

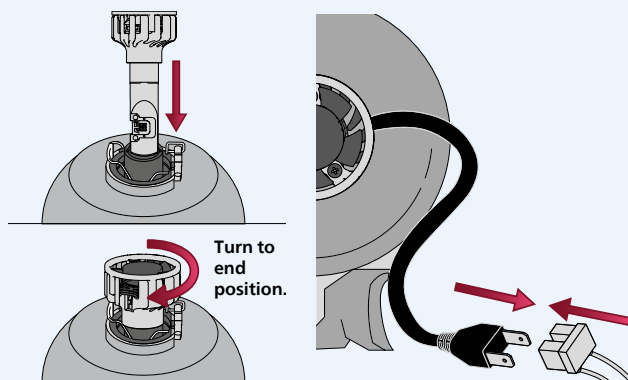
## Installation using spring clip



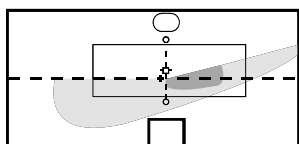
**Open the clip and remove the halogen bulb**



**Turn the center ring of the LED bulb counterclockwise (1) and pull it upward (2), then insert the ring and close the spring clip again.**



**Insert the bulb and turn it clockwise until it reaches the end position. Connect the vehicle plug to the LED cable** and place the cable under the headlight cover.



**Check the headlight adjustment, and you're done!**

**After changing the lights, carry out a check as usual and adjust the headlight settings if necessary.**



# Frequently Asked Questions (FAQ)



## What is an LED retrofit light? For which applications are LED retrofit lights available?

LED retrofit lights offer a solution for drivers who want to upgrade their vehicle lighting from halogen lights **to the latest LED technology**. Road-use approval of LED retrofit lights is granted in the form of a Certification and/or a sticker depending on the country where the homologation is applied and is currently available for the low beam and/or high beam on selected vehicle models.

Please refer to our compatibility list at [Philips.com/RoadLegalLED](https://www.philips.com/RoadLegalLED)

## I have heard that LED lights may severely dazzle oncoming traffic. Is that the case for Philips LED retrofit bulbs?

The **safety of drivers and other road users is our top priority**. That's why our Philips LED bulbs are equipped with our **SafeBeam technology**, offering an **optimal light beam** and **glare-free light distribution**. The bulb illuminates the road exactly where the driver needs it, without dazzling oncoming vehicles or road users.



## Is there a product warranty for the Philips Ultinon Pro6000 LED?

Yes, we offer 2 years plus 1 year extended warranty\* on the Philips Ultinon Pro6000 LED. Your clients can find more information when registering the extended warranty at [Philips.com/auto-warranty](https://www.philips.com/auto-warranty).

\*Applies only to manufacturing defects and to non-commercial use. For more information, visit [Philips.com/auto-warranty](https://www.philips.com/auto-warranty)

## How do I make my clients aware of LED lighting?

With our versatile and **effective advertising tools**, we can help you to make your clients more aware of LED lighting. Actively engage with your clients and explain the **benefits of LED lighting technology**. You can also use your **client file to directly address** them, allowing you to offer an upgrade to LED lights in an even more targeted way.



## Can I offer an upgrade to LED lights at an all-inclusive price?

**Upgrading to LED lights is a professional service** that can also include accessories, light replacement, and light adjustment checks in addition to the lights themselves. Offer your clients the Philips Ultinon Pro6000 at a price that includes installation and light beam adjustment, and enter this all-inclusive price in the designated field of our advertising materials.

## What is the long-term benefit of my workshop on installing LED lights?

You underline your **status as a quality workshop** by advising your clients on LED lighting and **relying on a high-quality brand solution**. Compared to changing standard lights, **you can generate significantly more sales** and offer your clients clear added value, leading to happier clients!

**Ask your Philips sales representative about our practical advertising materials!**



You can find more frequently asked questions in the FAQ section at:  
**Philips.com/RoadLegalLED**



#### How do I know if the Philips Ultinon Pro6000 LED can be installed in my vehicle?

Philips Ultinon Pro6000 LED lamps are approved for road traffic in the respective countries where approval exists and for listed range of vehicle models and lighting functions only. To know more about the regulation applicable to your country, please check our dedicated **Philips.com/RoadLegalLED** webpage.

#### Can the Philips W5W-LED be installed inside the vehicle?

LED interior lighting (for example, dashboard, trunk, and glove compartment lights) is not subject to any legal restriction with regard to vehicle model or lighting function. Here, the Philips W5W-LED can be used freely, wherever applicable, as a replacement light source.

#### I cannot find a client's car in the Philips "List of approved vehicles" or the "Compatibility list". Can I still install the LED bulbs?

If the vehicle model is not in our Philips Compatibility List, the LED retrofit bulbs still need to be approved for this vehicle model. We will continue **expanding the list of approved vehicles over the following months** to make our solution available for **even more vehicle models**.

#### How can my clients explain to the authorities that their LED lights are approved for road use?

To download the approval certificate, scan the QR code on the packaging using a smartphone and follow the on-screen instructions. Print out a copy and give it to your clients. Your clients must always carry the printout document in their vehicle and present it whenever it's requested. Note that other requirements may apply to your country. Find more at **Philips.com/RoadLegalLED**

#### Why is retrofitting of LED lights not permitted for all vehicle models?

The European Member States still need to adopt the legislation for LED retrofit lights, so they are not permitted for use on public roads in the EU. For the Philips Ultinon Pro6000 LED, however, in certain countries, local authorities have granted approvals for road use for selected vehicle models at the national level. In others, only an individual homologation process can be fulfilled to approve the installation. Find more at **Philips.com/RoadLegalLED**

#### Can my clients travel to other countries once they have LED lights installed? Or do they have to remove the LED lights?

Yes. Your clients can cross the borders into other countries in a car converted with Philips Ultinon Pro6000 LED bulbs without removing them (except for countries that drive on the left, such as the UK, where LED lights must be replaced with halogen lights).

#### Do I need additional accessories to install the Philips Ultinon Pro6000 LED?

Some vehicle models may require an additional adapter ring for securing the installation of the LED bulbs in the headlight or a CANbus Adapter to prevent inaccurate error messages on the dashboard. For further details, please refer to your local applicable compatibility list at **Philips.com/RoadLegalLED**

#### After converting to LED, will there be an inaccurate error message on the dashboard, stating that the bulbs are not working?

In exceptional cases, such erroneous error messages may appear on the dashboard. Please consult your local applicable compatibility list at **Philips.com/RoadLegalLED** to check whether a CANbus adapter is required or recommended for the vehicle.

#### Are there any polarity issues with Philips LED retrofit bulbs?

**Philips H7-LED and H4-LED are polarity free** and may be mounted either way around. **Philips W5W-LED is polarity sensitive** and needs to be mounted as per the instructions.

#### Have the bulbs been tested for radio interference?

Yes, our Philips LED bulbs have been tested for radio interference and **comply with all relevant standards**.

#### Why is brand quality so important in vehicle lighting?

With Philips brand quality, you and your clients can be sure of receiving **flawless and safety-tested products**. If products of inferior quality are used, this may result, at worst, in poor illumination of the road and/or dazzling of other road users.

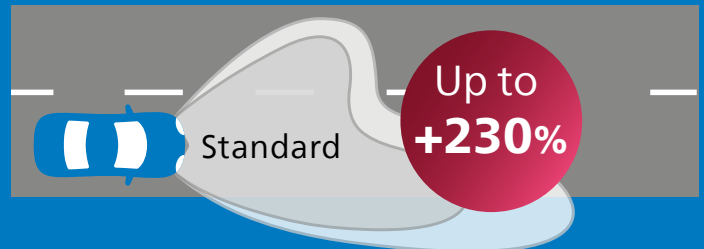


**You now have all the information you need about road-legal LED lighting and can offer your clients a professional light replacement service at a fixed price!**

## Philips Ultinon Pro6000 LED



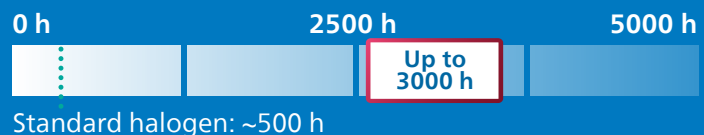
Light output<sup>1</sup>



Light color



Lifetime



Legal notice: It is your own responsibility to ensure that the use of the LED retrofit lights complies with applicable local legal requirements. Philips Ultinon Pro6000 LED bulbs are approved for road traffic in the respective countries where approval exists and for listed range of vehicle models and lighting functions only. For more information about the legal requirement that apply in your country and to consult our latest compatibility list, visit [Philips.com/RoadLegalLED](https://www.philips.com/RoadLegalLED). <sup>1</sup> Compared to the legal minimum standard for halogen lights.

2023 © Lumileds Holding B.V.  
All rights reserved.  
The Philips trademark and the Philips shield emblem are registered trademarks of Koninklijke Philips N.V.  
Subject to technical changes.



Scan for more information



[Philips.com/RoadLegalLED](https://www.philips.com/RoadLegalLED)