

**ANNOTATED CHECKLIST OF THE VASCULAR FLORA
OF MCLENNAN COUNTY, TEXAS**

VANESSA C. HANNICK
Department of Biology
Baylor University
Waco, Texas 76798-7388

JEFFREY N. MINK
Department of Biology
McLennan Community College
1400 College Drive
Waco, Texas 76708
JMink@mclennan.edu
J_Mink@baylor.edu

JASON R. SINGHURST
Wildlife Diversity Program
Texas Parks and Wildlife Department
4200 Smith School Road
Austin, Texas 78704

WALTER C. HOLMES
Department of Biology
Baylor University
Waco, Texas 76798-7388
walter_holmes@baylor.edu

ABSTRACT

An inventory of the vascular flora of McLennan County, Texas, located in northern east-central portion of the state, has resulted in the documentation of 1145 species from 127 families. McLennan County contains three physiographic areas: Blackland Prairie, Grand Prairie (which includes the Lampasas Cut Plain/Washita Uplands), and the East Cross Timbers. The plant list includes 32 species that are endemic to Texas and 388 species that are county records. The most noteworthy species is *Cheilanthes lanosa*, the only Texas record for the species.

KEY WORDS: Texas, McLennan County, floristics

Published works discussing the flora of McLennan County date back to 1892 with an article (“popular account”) by E.N. Plank in *Garden and Forest*. The sole effort to describe the flora of the county was by Lula Pace, former Professor of Botany at Baylor University, who published a list of the flora of the county in the *University of Texas Bulletin* in 1923 (Adkins 1923). The list includes 420 species and thus inadequately depicts the actual floral diversity of the county. She also included “[a] few of the introduced trees and more conspicuous plants [ornamentals].” Since then, Gould (1962), Correll and Johnston (1970), Hatch et al. (1990), and Diggs et al. (1999) have written manuals and checklists that included flora found in McLennan County, and Turner et al. (2003) produced an atlas of vascular plants of Texas that maps the presence of species in the county. Each of these publications has expanded records of the documented flora for McLennan County, but since Pace’s 1923 document, an exclusive list of the flora of the county has not been compiled.

European settlement of McLennan County began in 1832, and by 1845 the county was heavily settled (Adkins 1923; Templin et al. 1958; Miller et al. 2001). At that time the Tankawa, Tehuacana, and Tawakoni (Waco) Native Americans that had occupied the region were mostly driven out. McLennan County was formally organized in 1850 and was named for Neil McLennan who was the first cattle rancher to register his brand (M) in the county (Adkins 1923; Miller et al. 2001). With settlement came agriculture and alteration to the landscape. The flora of the landscape changed accordingly and continues to undergo change with much of the county converted to farm and pasture land. The current population of the county is approximately 235,000 (US Census Bureau 2012).

McLennan County is located in northern east-central Texas and comprises approximately 2747.98 square kilometers (1061.0 square miles) of mainly prairie. The county's elevation ranges from 106.68 meters (350 feet) above sea level to 281.64 meters (924 feet) above sea level. The climate zone of the county is humid subtropical with average daily temperatures ranging from 0.06° C (32.1° F) to 35.78° C (96.4° F). Typically, the coldest temperatures occur in January and February, and the warmest temperatures in July and August. Average yearly rainfall for the area is 84.84 centimeters (33.40 inches) with most rain falling during the month of May. The average growing season (days without frost) is approximately 250 days (summary data from Miller et al. 2001; Templin et al. 1958; and Handbook of Texas Online, February 2008).

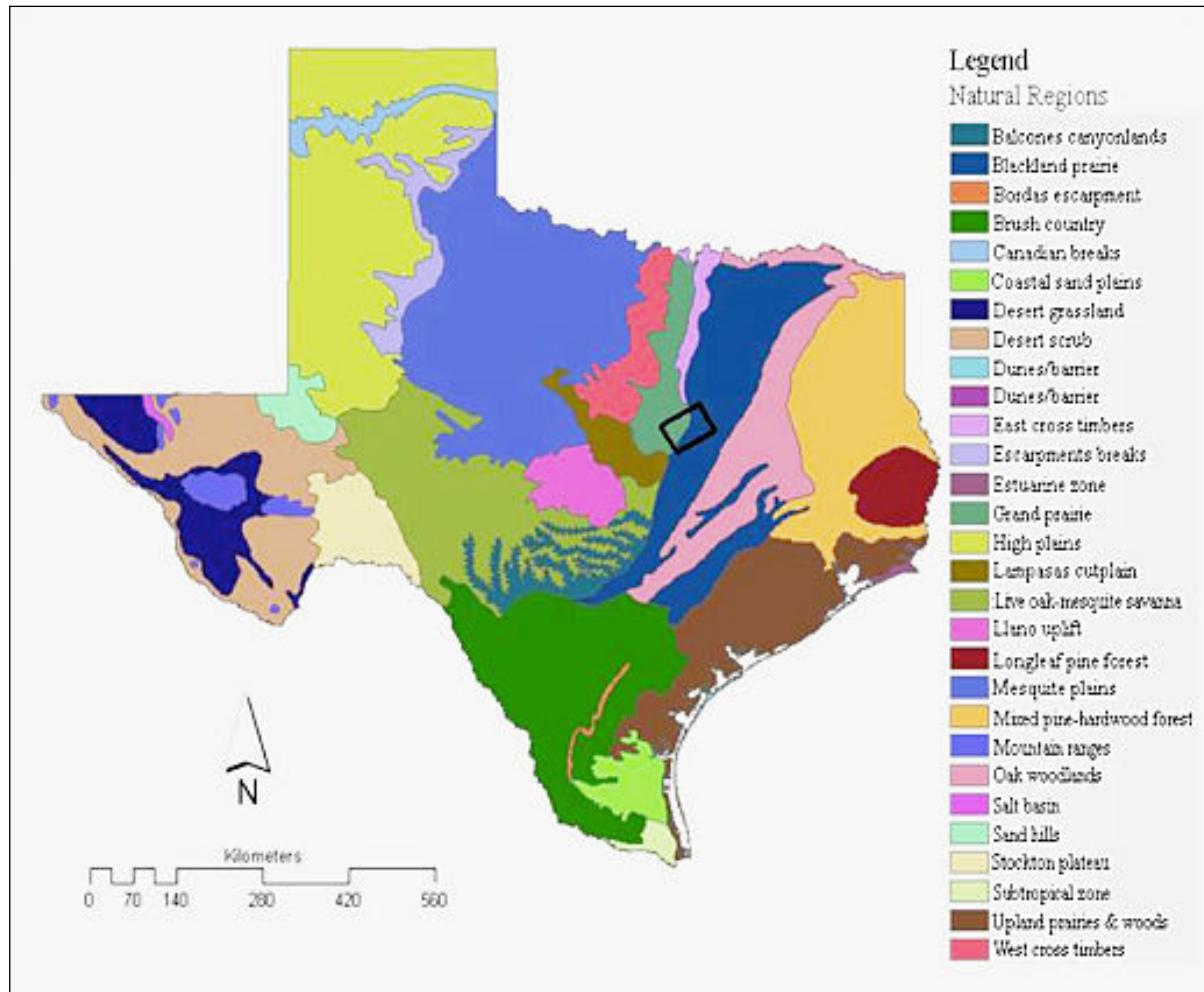


Figure 1. Vegetational regions of Texas with McLennan County outlined in black. (Created with ArcMap version 9.2, Environmental Systems Research Institute 2002).

The chief vegetational areas of the county include Blackland Prairie, East Cross Timbers, and Lampasas Cut Plain, which is also known as Washita Uplands (Figure 1). The Lampasas Cut Plain (Washita Uplands) is part of the Grand Prairie physiographic area (Adkins 1923). The Blackland Prairie vegetational area forms a physiographic area of the same name. The East Cross Timbers is not geologically represented in the county; however a small area in the northern region of the county includes a deposited extension of soils from the East Cross Timbers from areas north of the county (Adkins 1923; Templin et al. 1958). River alluvial soils are also prevalent in the county but not represented by specific vegetational or physiographic areas. Each of the physiographic areas is subtended by specific geologies: Blackland Prairie is subtended by Upper Cretaceous rocks and Grand Prairie is subtended by Lower Cretaceous.

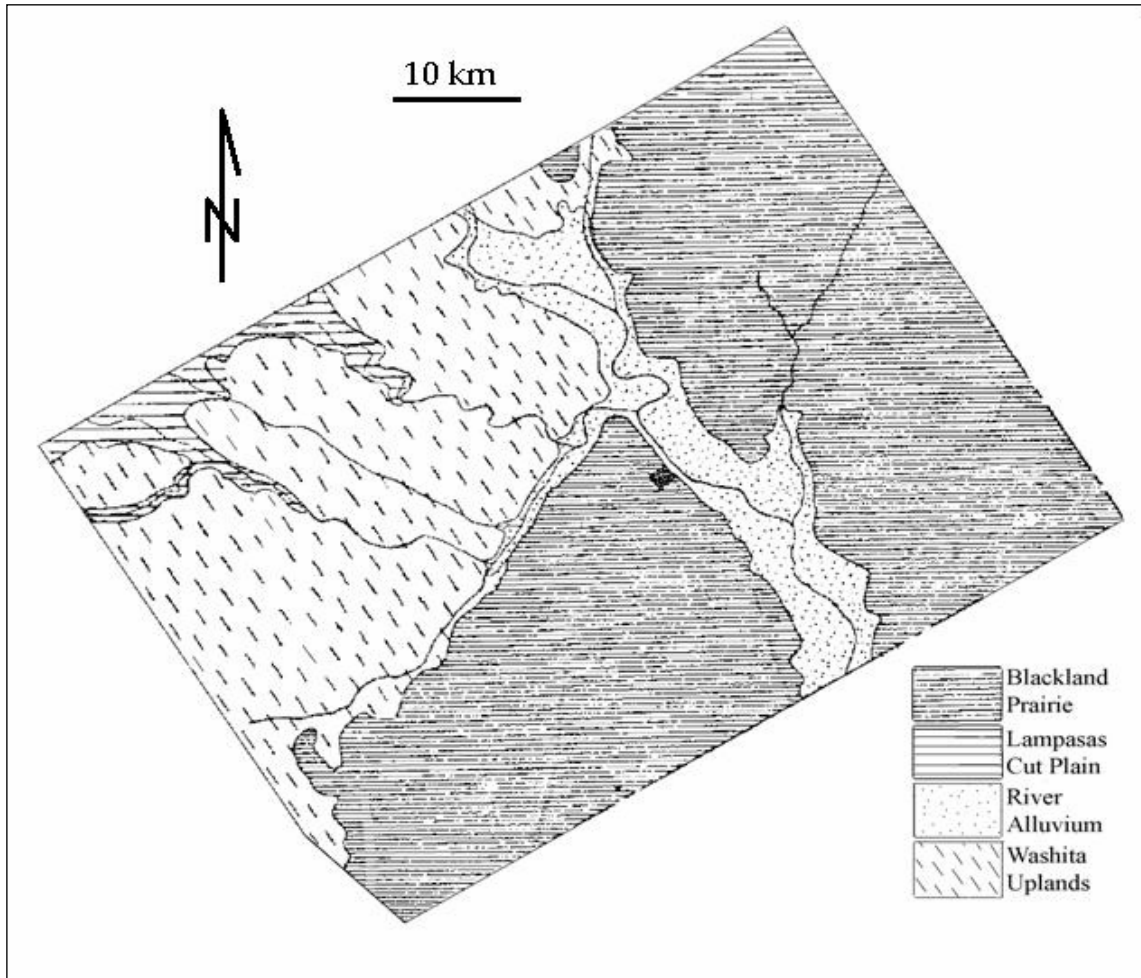


Figure 2. Physiographic areas of McLennan County (after Adkins 1923). City of Waco = black diamond.

Major topographic features of the county are hydrologic and include the Brazos River, the North, Middle, and South Bosque Rivers, Waco Lake (reservoir), Tradinghouse Creek Reservoir, Lake Creek Lake (reservoir), Lake Brazos (Brazos River behind a low water dam), and the Bosque (Balcones) and White Rock Escarpments (Adkins 1923; Templin et al. 1958; Miller et al. 2001). The Brazos River flows northwest to southeast, parallel to the eastern edge of the county and is emptied into by the Bosque River, also flowing northwest to southeast. Other topographic features are the Balcones and Whiterock escarpments, which are continuous geological formations separating the Upper Cretaceous rock and Lower Cretaceous rock and thus dividing Blackland Prairie and Grand

Prairie. As described in Adkins (1923), these formations are west-facing erosional structures that expose Austin Chalk formations and Eagle Ford Flag (Shale) formations.

Construction of the checklist

A preliminary list of McLennan County vascular plant species was compiled using the Flora of Texas Database, Plant Resources Center, University of Texas, Austin (2007). The database encompasses specimens from both the University of Texas Herbarium (TEX) and the Lundell Herbarium (LL). The Baylor University Herbarium (BAYLU) was canvassed for additional specimens. Plant records mapped in Turner et al. (2003) were added to the checklist.

Additional species were collected during several field excursions to areas of interest (aquatic, unique soil composition, not yet explored) between August 2006 and August 2008. Particular attention was given to plants expected to grow in McLennan County but not reported.

Annotations accompanying each specimen include collector, collection number, herbarium (or source of record) as well as information about nativeness, introduction, invasiveness (weediness), and county record. Native and foreign species introduced as a result of human impact on the environment are discussed as in Pyšek et al. (2004).

Statistical analysis

Based upon various floristic inventories of herbarium specimens and published accounts from Texas (see citations Table 1), documented species were compared against the model originally proposed by Arrhenius (1921) and subsequently adapted by others (see Singhurst et al. 2010 for an historical treatment of species-area models) to determine the adequacy of McLennan County sampling effort. A statistical relation of species richness as a function of geographic area produces a theoretical slope (Z) and intercept (d) based on this formula: $S=dA^Z$ (Arrhenius 1921). Species richness and geographic area of McLennan County, four published county inventories, and the state of Texas, were log-transformed into a database (see Table 1). Consequently, a linear function is created and a regression line that establishes a theoretical value of species fidelity equated per unit area and thereby an empirical gauge of sampling effort indicated by the slope.

Table 1. Known values of species richness for vascular plants and associated geographic area from published county inventories ($n = 5$) in Texas, USA. We chose to use data published by Diggs et al. 1999; modified from Correll and Johnston 1970, to include nonnatives as per other published accounts; however, Turner et al. 2003, note persistent components of Texas flora numbering 6,055 taxa.

Co./Region	No. of species	Families	Genera	Predicted Species	Area (km ²)	Citation
Walker	1181	-	-	868.10	2031.00	Zimmerman 1977; Carr 1994; Singhurst 1998; Nesom & Brown 1998
Montgomery	581	-	-	907.25	2698.11	Nesom & Brown 1998
San Jacinto	771	-	-	825.97	1474.33	Peterson & Brown 1983; Nesom & Brown 1998
Madison	985	136	488	800.71	1207.12	Neill and Wilson 2001
McLennan	1145	131	552	907.22	2697.54	<i>current study</i>
Texas	5524	180	1284	2140.26	677940.30	Correll & Johnston 1970; Hatch et al 1990; Diggs et al. 1999; Turner et al. 2003

RESULTS

Flora

The vascular flora of McLennan County consists of 1145 species, including varieties, in 127 families and 552 genera. Ferns and their allies are represented by 14 species; gymnosperms are represented by three species; monocots 250; and dicots 885. The families having the greatest number of species are Asteraceae (144), Poaceae (129), Fabaceae (95), Cyperaceae (44), and Euphorbiaceae (37). There are 388 species of plants not previously recorded in any published documents (county records), which represents 33.9% of the total number of plants found in the county. Species introduced to the United States, cultivated, and escaped (219) represent 19.1% of the total species of the county. The high percentage of introduced species in the county indicates a high level of disturbance which is evident by the extent of urbanization of the county. McLennan County has 32 species endemic to the state of Texas.

Species-area relationship

Figure 3 demonstrates an adequate sampling indicated by the McLennan County datum point above the slope of the determined function, moreover data for both Madison and Walker counties place those sampling efforts above this slope-line suggesting these inventories can be considered as legitimately appraised. It should be explicitly stated that these empirical data (Table 1), should be regarded as approximations entirely dependent on data from lists of flora actually obtained and as such this regression would alter with more county inventories.

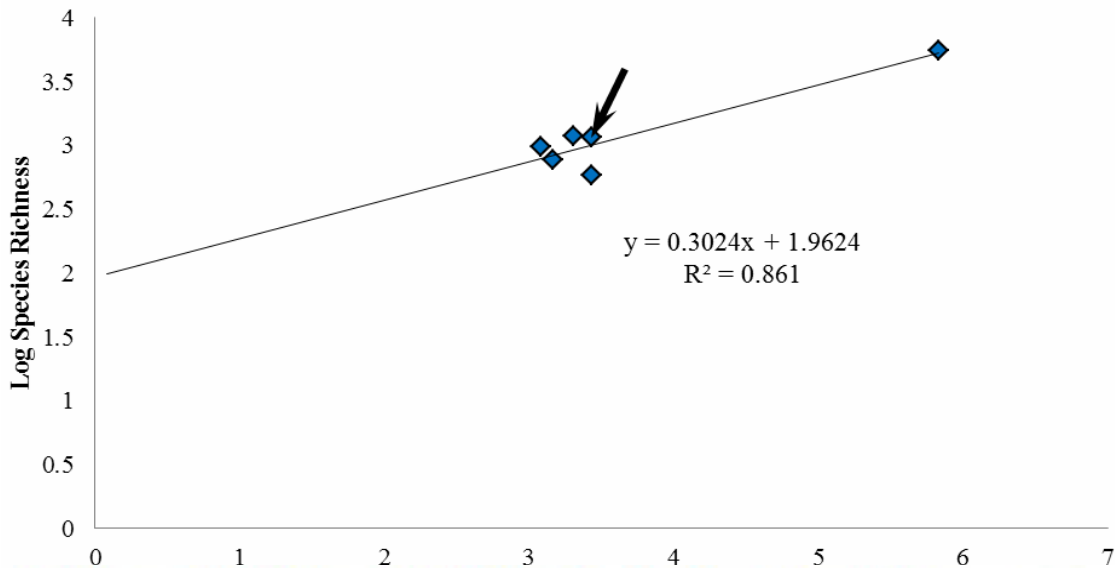


Figure 3. Vascular plant species related to geographic area of Texas based on known county inventories ($n=5$) and summary of total species documented for the state (arrow indicates McLennan Co.). Diamonds signify floristic inventories from Table 1.

The authors note the comparatively lower species numbers associated with Montgomery County (Nesom & Brown 1998), versus the species-area slope. Inquiries into the possibility of additional collections revealed that numerous additions to the Montgomery County flora have been documented (E. Keith, pers. comm.); however, these additions are to-date unpublished and thus omitted.

DISCUSSION AND CONCLUSIONS

Species notations

Several notations are included in the species checklist. Each designation is defined in Pyšek et al. (2004). Those designations include cultivated and introduced species ("alien plants"), weedy species ("weeds"), and endemic plants ("native plants"). Classification of species as introduced and weedy is based on the USDA PLANTS (2008). Cultivated species are classified based on the information in the Flora of North Central Texas (Diggs, et al., 1999). Endemic classification is based on the Flora of Texas Consortium's (2008) list of vascular plants endemic to Texas. Plants not designated as endemic to Texas and not otherwise designated are considered native to the United States. None of the species listed in the checklist is listed as threatened or endangered according to the USDA PLANTS (2008). Species that have not previously published as occurring in McLennan County are labeled as county records.

Noteworthy species

Noteworthy species found in McLennan County include those that are at the periphery of their range, those that occur only in very few counties in Texas, and those that are rare for the area. The first of these is *Cheilanthes lanosa* (Pteridaceae), hairy lipfern. The species has been reported in most of the eastern and central United States, but in Texas has only been collected in McLennan County. The record is based upon a collection by *E. T. Wherry s.n.* (US). A discussion of this record is in Holmes et al. (2011). Another Texas record, known only from a one-time collection in McLennan County is *Iresine diffusa*. The nearest confirmed record of this species is in central Louisiana (Thomas and Allen 1996).

Passiflora caerulea has not been reported elsewhere in the state of Texas, with Louisiana being the only neighboring state reporting this species USDA PLANTS (2008). *Orobanche ludoviciana* subsp. *multiflora* appears to be rare in this area but is represented by one collection. The species was also included in Pace (1923). *Cucumis anguria* occurs elsewhere only in Cameron County at the southern tip of Texas bordered by Mexico and the Gulf of Mexico (Turner, et al., 2003). *Sium suave* is known elsewhere only from Gonzales County in south-central Texas (Turner, et al. 2003). *Cuscuta polygonorum* has been collected in Childress County, near the panhandle of Texas near the Texas/Oklahoma border, and in Brazos County which is approximately 95 miles southeast of McLennan County.

Several specimens occurring in McLennan County represent the outermost limits of the distribution of that species in Texas. *Ammoselinum popei* and *Centaurium beyrichii* are at the eastern edge of their respective distributions. *Dalea obovata*, *Heliotropium procumbens*, *Maurandya antirrhiniflora*, and *Merremia dissecta* are at the northern edge of their distributions. *Sabal minor* is at the western edge of its distribution and is an interesting collection in the Brazos River drainage area.

Plant associations

Because of the extent of disturbance in McLennan County with agriculture and urbanization, the plant associations occurring at present bear little resemblance to the original (undisturbed) vegetation. Under such circumstances, a discussion of plant associations is without merit. Instead, the authors refer the reader to Diggs, et al. (1999) and/or Diamond and Smeins (1993), who describe the types of plant communities (associations) supposedly native to the region.

CHECKLIST

The annotated checklist of the vascular flora of McLennan County, Texas primarily follows Diggs, et al. (1999), and, when necessary, Turner, et al. (2003) and/or Correll and Johnston (1970). Species are subdivided into pteridophytes (ferns and fern allies), gymnosperms, and angiosperms, which are then divided into dicotyledonous and monocotyledonous plants. Family, genus, and

species are alphabetically arranged beneath each category heading. With few exceptions, the classification, particularly of families, follows Correll and Johnston (1970), largely because that system was used in the original work (Hannick 2008). However, some realignment of families was made to follow the accepted modern circumscription of several families. This mainly included merger of the Asclepidaceae into the Apocynaceae and the disintegration of the tradition recognition of the Liliaceae and Scrophulariaceae. Some of the species entries are not documented by voucher specimens but are from the cited published sources. These mainly include grasses cited in Shaw et al. (2011) and some species names included in Pace (1923). Such undocumented records were generally problematic and are included only because they are in the literature as being present in the county. Basically, the reader is referred to the source and can make a decision as to the reasonableness of the entry. Additionally, those species in Pace (1923) deemed to be strictly ornamental or of questionably determination were excluded or annotated as of doubtful determination.

Distinctive designations are given to plants in the form of symbols. Plants that are not native are designated by an asterisk (*), Texas endemics by [the small character] tau (τ), invasive plants by a dagger (\dagger), and new county records (plants never before reported for McLennan County) by a section symbol (§).

FERNS AND FERN ALLIES

AZOLLACEAE

§ *Azolla caroliniana* Willd., S.A. Conry 42 [BAYLU]

EQUISETACEAE

Equisetum arvense L., cited in Pace (1923). [This likely based upon a misdetermination. See Mink et al. 2011 for comments on the distribution of this species in the state.]

Equisetum hyemale L. subsp. *affine* (Engelm.) Calder & R.L. Taylor, B. Benner & R. Kormanik 23 [BAYLU, TEX]

Equisetum laevigatum A. Braun, H. Steward 128 [BAYLU]

MARSILEACEAE

§ *Marsilea macropoda* Engelm. ex A. Braun, E.L. Hamby s.n. [BAYLU]

Marsilea vestita Hook. & Grev., W.C. Holmes 5470 [BAYLU]

OPHIOGLOSSACEAE

§ *Ophioglossum crotalophoroides* Walter, W.C. Holmes 7613 [BAYLU]

Ophioglossum engelmannii Prantl, W.C. Holmes 7614 [BAYLU]

POLYPODIACEAE

Pleopeltis polypodioides (L.) Andrews & Windham, cited in Pace (1923)

PTERIDACEAE

Adiantum capillus-veneris L., L.D. Smith 237 [TEX]

Cheilanthes alabamensis (Buckley) Kuntze, cited in Pace (1923)

Cheilanthes lanosa (Michx.) D.C. Eaton, Wherry s.n. [US]. [See Holmes et al. (2011) for an account of this species in Texas.]

Pellaea atropurpurea (L.) Link, cited in Pace (1923)

THELYPTERIDACEAE

§ *Thelypteris ovata* R.P. St. John var. *lindheimeri* (C. Chr.) A.R. Sm., J.N. Mink 1588 [BAYLU]

GYMNOSPERMS**CUPRESSACEAE**

- Juniperus ashei* J. Buchholz, *W.C. Holmes* 6231 [BAYLU, TEX]
Juniperus virginiana L., *L.D. Smith* 182 [TEX]

PINACEAE

- Pinus taeda* L., *W.C. Holmes* s.n. [BAYLU]

DICOTS**ACANTHACEAE**

- Dicliptera brachiata* (Pursh) Spreng., *W.C. Holmes* 5463 [BAYLU, TEX]
Dyschoriste linearis (Torr. & A. Gray) Kuntze var. *linearis*, *L.D. Smith* 1123 [TEX]
Justicia americana (L.) Vahl, *L.D. Smith* 293 [BAYLU, TEX]
 § *Ruellia caroliniensis* (J.F. Gmel.) Steud., *F.A. Williams* s.n. [BAYLU]
 τ *Ruellia drummondiana* (Nees) A. Gray, *L.D. Smith* 1116 [TEX]
Ruellia humilis Nutt. var. *humilis* *L.D. Smith* 644 [TEX]
Ruellia nudiflora (Engelm. & A. Gray) Urb. var. *nudiflora* *W.C. Holmes* 5436 [BAYLU, TEX]
Ruellia strepens L., *W.C. Holmes* 5273 [BAYLU]

ACERACEAE

- Acer negundo* L., *W.C. Holmes* 5018 [BAYLU]

AMARANTHACEAE

- Alternanthera caracasana* Kunth, *L.D. Smith* 881 [TEX]
 *§ *Alternanthera philoxeroides* (Mart.) Griseb., *W.C. Holmes* 14939 [BAYLU]
Amaranthus albus L., *L.D. Smith* s.n. [BAYLU]
Amaranthus arenicola I.M. Johnst., *L.D. Smith* 1045 [TEX]
 * *Amaranthus blitoides* S. Wats., *L.D. Smith* 286 [TEX]
 § *Amaranthus hybridus* L., *W.C. Holmes* & *J.N. Mink* 15588 [BAYLU]
Amaranthus palmeri S. Wats., *L.D. Smith* 825 [TEX]
Amaranthus polygonoides L., mapped in Turner, et al. (2003)
 § *Amaranthus powellii* S. Wats., *E.L. Hamby* s.n. [BAYLU]
Amaranthus retroflexus L., *A.M. Gordon* s.n. [BAYLU]
Amaranthus rudis J.D. Sauer, *C.L. York* 46252 [TEX]
Amaranthus scleropoides Uline & Bray, *C.L. York* 46249 [TEX]
 § *Amaranthus spinosus* L., *A.M. Gordon* s.n. [BAYLU]
Froelichia floridana (Nutt.) Moq., *L.D. Smith* 80 [BAYLU, TEX]
Froelichia gracilis (Hooks) Moq., *W.C. Holmes* 12031 [BAYLU, TEX]
 § *Iresine diffusa* Humb. & Bonpl. ex Willd., *W.C. Holmes* 5460 [BAYLU, TEX]
Iresine rhizomatosa Standl., mapped in Turner, et al. (2003)

ANACARDIACEAE

- *§ *Pistacia chinensis* Bunge, *W.C. Holmes* & *J.N. Mink* 14614 [BAYLU]
Rhus aromatica Aiton. var. *serotina* (Greene) Rehder, *W.C. Holmes* 8247 [BAYLU]
 § *Rhus copallinum* L. var. *latifolia* Engl., *F.A. Williams* s.n. [BAYLU]
 § *Rhus glabra* L., *W.C. Holmes* 6661 [BAYLU, TEX]
Rhus lanceolata (A. Gray) Britton, *W.C. Holmes* 5177 [BAYLU]
Rhus trilobata Nutt., *J.N. Mink* 1033 [BAYLU]
 § *Rhus virens* Lindh. ex A. Gray, *W.C. Holmes* 4941 [BAYLU]

Toxicodendron radicans L., *L.D. Smith* 246 [TEX]

APIACEAE

- *§ *Ammi majus* L., *J. Meadows s.n.* [BAYLU]
- § *Ammoselinum butleri* (Engelm. ex. S. Wats.) J.M. Coult. & Rose *J.N. Mink* 1248 [BAYLU]
- § *Ammoselinum popei* Torr. & A. Gray, *E.L. Hamby s.n.* [BAYLU]
- *§ *Anethum graveolens* L., *W.C. Holmes* 13466 [BAYLU]
- Bifora americana* Benth. & Hook. f. ex. S. Wats., *W.C. Holmes* 6457 [BAYLU, TEX]
- § *Bowlesia incana* Ruiz & Pav., *E.L. Hamby s.n.* [BAYLU]
- * *Bupleurum rotundifolium* L., *W.C. Holmes* 8249 [BAYLU]
- Chaerophyllum tainturieri* Hook., *L.D. Smith* 1134 [TEX]
- * *Coriandrum sativum* L., *W.C. Holmes* 7022 [BAYLU]
- * *Cyclospermum leptophyllum* (Pers.) Sprague ex Britton & P. Wilson, *L.D. Smith* 487 [BAYLU, TEX]
- § *Cymopterus macrorhizus* Buckley, *R.C. Gardner* 555 [BAYLU]
- *§ *Daucus carota* L., *W.C. Holmes* 13118 [BAYLU]
- Daucus pusillus* Michx., *L.D. Smith* 628 [BAYLU, TEX]
- Eryngium hookeri* Walp., *W.C. Holmes* 12389 [BAYLU]
- Eryngium leavenworthii* Torr. & A. Gray, *W.C. Holmes* 6224 [BAYLU]
- § *Eurytaenia texana* Torr. & A. Gray, *S. Wilbur s.n.* [BAYLU]
- Hydrocotyle umbellata* L., *L.D. Smith* 99 [TEX]
- Hydrocotyle verticillata* Thunb., *L.D. Smith* 1000 [BAYLU, TEX]
- Hydrocotyle verticillata* Thunb. var. *triradiata* (A. Rich.) Fernald, *M.J. McCall* 137 [BAYLU]
- § *Limnoscadium pinnatum* (DC.) Mathias & Constance, *L.D. Smith* 633 [BAYLU, TEX]
- Limnoscadium pumilum* (DC.) Mathias & Constance, *W.C. Holmes* 5657 [BAYLU, TEX]
- § *Polytaenia texana* (Coulter & Rose) Mathias & Constance, *W.C. Holmes* 6456 [BAYLU]
- Ptilimnium capillaceum* (Michx.) Raf., *L.D. Smith* 1142 [TEX]
- Sanicula canadensis* L., *L.D. Smith* 659 [BAYLU, TEX]
- Sium suave* Walter, cited in Pace (1923)
- § *Spermolepis echinata* (Nutt.) Heller, *J. Taylor s.n.* [BAYLU]
- § *Spermolepis inermis* (Nutt. ex DC.) Mathias & Constance, *B. Weaver s.n.* (BAYLU) [BAYLU]
- * *Torilis arvensis* (Huds.) Link, *C.L. York* 46101 [TEX]
- *§ *Torilis nodosa* (L.) Gaertn., *S. Walker* 96 [BAYLU]

APOCYNACEAE

- Amsonia ciliata* Walter var. *texana* (A. Gray) J.M. Coult., *L.D. Smith* 1072 [LL]
- Asclepias asperula* (Decne.) Woodson, *M.H. Mayfield* 1242 [TEX]
- Asclepias oenotheroides* Cham. & Schltld., *W.C. Holmes* 6798 [BAYLU]
- Asclepias tuberosa* L., *L.D. Smith* 609 [TEX]
- Asclepias verticillata* L., *L.D. Smith* 603 [TEX]
- Asclepias viridiflora* Raf., *L.D. Smith* 671 [TEX]
- Asclepias viridis* Walter, *W.C. Holmes* 5439 [BAYLU]
- Amsonia ciliata* Walter var. *texana* (A. Gray) J.M. Coult., *L.D. Smith* 1072 [LL]
- *§ *Catharanthus roseus* (L.) G. Don, *F.A. Williams s.n.* [BAYLU]
- § *Cynanchum laeve* (Michx.) Pers., cited in Pace (1923)
- § *Cynanchum recemosum* (Jacq.) Jacq. var. *unifarium* (Scheele) Sundell, *W.C. Holmes* 15888 [BAYLU]
- § *Funastrum cynanchoides* (Decne.) Schltr., *W.C. Holmes* 13477 [BAYLU]
- Matelea biflora* (Raf.) Woodson, *M.H. Mayfield* 1237 [TEX]
- § *Matelea cynanchoides* (Endgelm.) Woodson, *W.C. Holmes* 5253 [BAYLU]

- § *Matelea gonocarpus* (Walker) Shinners, *A.M. Gordon s.n.* [BAYLU]
- Matelea reticulata* (Engelm. ex. A. Gray) Woodson, *R.D. Williamson s.n.* [BAYLU]
- *§ *Trachelospermum jasminoides* (Lindl.) Lem., *W.C. Holmes 12157* [BAYLU]
- *§ *Vinca major* L., *B.E. Winn 22* [BAYLU]
- *§ *Vinca minor* L., *M. Wheeler s.n.* [BAYLU]

AQUIFOLIACEAE

- Ilex decidua* Walter, *L.D. Smith 471* [BAYLU, TEX]
- Ilex vomitoria* Sol. in Aiton, *J.N. Mink 1018* [BAYLU]

ARALIACEA

- *§ *Hedera helix* L., cited in Pace (1923) [Probably cultivated]

ARISTOLOCHIACEAE

- Aristolochia tomentosa* Sims., mapped in Turner, et al. (2003)

ASTERACEAE

- Achillea millefolium* L., *W.C. Holmes 6460* [BAYLU, TEX]
- Ambrosia artemisiifolia* L., *K. Clark s.n.* [BAYLU]
- Ambrosia psilostachya* DC., *L.D. Smith 308* [BAYLU, TEX]
- Ambrosia trifida* L. var. *texana* Scheele, *W.C. Holmes 6223* [BAYLU, TEX]
- * *Anthemis cotula* L., *L.D. Smith 1156* [TEX]
- Aphanostephus skirrhobasis* (DC.) Trel., *L.D. Smith 590* [TEX]
- Arnoglossum plantagineum* Raf., *W.C. Holmes 7112* [BAYLU, TEX]
- Artemisia ludoviciana* Nutt. subsp. *ludoviciana* *L.D. Smith 276* [TEX]
- Artemisia ludoviciana* Nutt. subsp. *mexicana* (Willd. Ex Spreng.) D.D. Keck, *W.C. Holmes 13508* [BAYLU]
- § *Baccharis neglecta* Britton, *L.D. Smith 1023* [TEX]
- Baccharis texana* (Torr. & A. Gray) A. Gray, *L.D. Smith s.n.* [BAYLU]
- § *Boltonia diffusa* Elliot, *L.D. Smith s.n.* [BAYLU]
- § *Brickellia cylindracea* A. Gray & Engelm., *W.C. Holmes 7896* [BAYLU]
- § *Brickellia eupatorioides* L. var. *texana* (Shinners) Shinners, *W.C. Holmes 8720* [BAYLU]
- *§ *Calyptocarpus vialis* Less., *R. Murgrave s.n.* [BAYLU]
- *§ *Carthamus tinctorius* L., *W.C. Holmes 13530* [BAYLU]
- Centaurea americana* Nutt., *V.C. Hannick 228* [BAYLU]
- *§ *Centaurea cyanus* L., *P. Riley s.n.* [BAYLU]
- *§ *Centaurea melitensis* L., *V.C. Hannick 209* [BAYLU]
- Chaetopappa asteroides* Nutt. ex DC., *L.D. Smith 1058* [TEX]
- τ *Chaetopappa bellidifolia* (Gray & Engelm.) Shinners, *L.D. Smith 503* [TEX]
- Chloracantha spinosa* (Benth.) G.L. Nesom, *L.D. Smith 303* [BAYLU, TEX]
- § *Chrysopsis pilosa* Nutt., *E. Haskell s.n.* [BAYLU]
- *§ *Cichorium intybus* L., *W.C. Holmes 13803* [BAYLU]
- Cirsium discolor* (Muhl. ex Willd.) Spreng., *L.D. Smith 675* [TEX]
- Cirsium horridulum* Michx., *L. Stepp 148* [BAYLU]
- Cirsium texanum* Buckley, *G. Nesom & J. Nesom 7027* [TEX]
- § *Cirsium undulatum* (Nutt.) Spreng., *A. Browning s.n.* [BAYLU]
- Cirsium virginianum* (L.) Michx., *L. Harrel s.n.* [BAYLU]
- Conoclinium coelestinum* (L.) DC., *L.D. Smith 64* [BAYLU]
- Conyza canadensis* (L.) Cronquist, *L.D. Smith 274* [TEX]
- Conyza ramosissima* Cronquist, *L.D. Smith 829* [TEX]
- Coreopsis tinctoria* Nutt., *L.D. Smith 706* [TEX]

- Coreopsis wrightii* (A. Gray) H.M. Parker, mapped in Turner, et al. (2003)
Croptilon hookerianum (Torr. & A. Gray) House var. *validum* (Rydb.) E.B. Sm., *L.D. Smith 1015* [TEX]
Diaperia verna (Raf.) Morefield var. *verna*, *L.D. Smith 438* [TEX]
Dracopis amplexicaulis (Vahl.) Cass., *L. Stepp 130* [BAYLU]
- § *Echinacea angustifolia* DC., *B. Wilson s.n.* [BAYLU]
Eclipta prostrata (L.) L., *W.C. Holmes 5170* [BAYLU]
Engelmannia peristenia (Raf.) Goodman & C.A. Lawson, *W.C. Holmes 6446* [BAYLU]
- § *Erigeron annuus* (L.) Pers., *S. Davis s.n.* [BAYLU]
Erigeron geiseri Shinnery, *L.D. Smith 514* [TEX]
- § *Erigeron modestus* A. Gray, *W.C. Holmes 5047* [BAYLU]
Erigeron philadelphicus L., *L.D. Smith 458* [BAYLU, TEX]
Erigeron strigosus Muhl. ex Willd., *L.D. Smith 1140* [TEX]
Erigeron tenuis Torr. & A. Gray, *L.D. Smith 411* [BAYLU, TEX]
Eupatorium serotinum Michx., *W.C. Holmes 5167* [BAYLU]
- § *Evax candida* (Torr. & A. Gray) A. Gray, *W.C. Holmes 12568* [BAYLU]
Evax prolifera Nutt. ex DC., *W.C. Holmes 5251* [BAYLU]
- * *Facelis retusa* (Lam.) Sch.-Bip., *W.C. Holmes 13770* [BAYLU]
- § *Gaillardia aestivalis* (Walter) H. Rock, *W.C. Holmes 12024* [BAYLU]
Gaillardia pulchella Foug., *C.L. York 46081* [TEX]
Gaillardia suavis (A. Gray & Engelm.) Britt. & Rusby, *W.C. Holmes 7661* [BAYLU]
- § *Gamochaeta pensylvanica* (Willd.) Cabrera, *L. Cole s.n.* [BAYLU]
Grindelia adenodonta (Steyerm.) G.L. Nesom, *L.D. Smith 62* [TEX]
Grindelia ciliata Spreng., *L.D. Smith 77* [TEX]
Grindelia lanceolata Nutt. var. *texana* (Scheele) Shinnery, *E. Whitehouse 6645* [LL]
- § *Gutierrezia dracunculoides* (DC.) S.F. Blake, *L.D. Smith 12* [TEX]
Gutierrezia microcephala (DC.) A. Gray, *W.C. Holmes 6264* [BAYLU]
- § *Gutierrezia texana* (DC.) Torr. & A. Gray, *A.M. Gordon s.n.* [BAYLU]
- *§ *Hedypnois cretica* (L.) Dum. Cours., *W.C. Holmes 12831* [BAYLU, TEX]
Helenium amarum (Raf.) H. Rock var. *amarum*, *C.L. York & L.D. Smith 128* [BAYLU, TEX]
Helenium elegans DC., *C.L. York 46071* [TEX]
Helenium microcephalum DC., *L.D. Smith 45* [TEX]
Helianthus annuus L., *W.C. Holmes 5090* [BAYLU]
- § *Helianthus debilis* Nutt. subsp. *cumcumerifolius* (Torr. & A. Gray) Heiser, *L.D. Smith 280* [BAYLU]
Helianthus hirsutus Raf., *F. Gehlbach s.n.* [BAYLU, TEX]
Helianthus maximiliani Schrad., *W.C. Holmes 5461* [BAYLU, TEX]
Helianthus petiolaris Nutt., mapped in Turner, et al. (2003)
- * *Heterotheca stenophylla* (A. Gray) Shinnery, *W.C. Holmes 15886* [BAYLU]
Heterotheca subaxillaris (Lam.) Britton & Rusby, *L.D. Smith 76* [TEX]
Hymenopappus scabiosaeus L'Her. var. *corymbosus* (Torr. & A. Gray) B.L. Turner, *W.C. Holmes 5046* [BAYLU, TEX]
- *§ *Hypochoeris brasiliensis* (Less.) Griseb., *W.C. Holmes 13268* [BAYLU]
Iva annua L., *W.C. Holmes 5440* [BAYLU, TEX]
Iva xanthifolia (Fresen.) Nutt., cited in Pace (1923); misdetermination of *Ambrosia trifida*?
Krigia caespitosa (Raf.) K.L. Chambers, *L.D. Smith 552* [TEX]
Krigia caespitosa (Raf.) K.L. Chambers f. *gracilis* (DC.) K.J. Kim, *W.C. Holmes 11281* [BAYLU]
- § *Krigia occidentalis* Nutt., *E.L. Hamby s.n.* [BAYLU]
Krigia wrightii (A. Gray) K.L. Chambers, *L.D. Smith 400* [TEX]
- § *Lactuca canadensis* L., *L.D. Smith 173* [BAYLU]

- Lactuca ludoviciana* (Nutt.) Riddell, *L.D. Smith* 696 [TEX]
- * *Lactuca serriola* L., *L.D. Smith* 1004 [TEX]
- Liatris glandulosa* Nesom & R. O'Kennon, *L.D. Smith* 1007 [TEX]
- § *Liatris mucronata* DC., *W.C. Holmes* 5173 [BAYLU]
- Lindheimera texana* Engelm. & A. Gray, *W.C. Holmes* 5269 [BAYLU]
- Lygodesmia texana* (Torr. & A. Gray) Greene, *W.C. Holmes* 5084 [BAYLU]
- Marshallia caespitosa* Nutt. ex DC. var. *caespitosa*, *W.C. Holmes* 8250 [BAYLU]
- Marshallia caespitosa* Nutt. ex DC. var. *signata* *L.D. Smith* 546 [TEX]
- Melampodium leucanthum* Torr. & A. Gray, *J.N. Mink* 1117 [BAYLU]
- Mikania scandens* (L.) Willd., *W.C. Holmes* 12027 [BAYLU]
- § *Packera glabella* (Poir.) C. Jeffrey, cited in Pace (1923)
- § *Packera plattensis* (Nutt.) Á. Löve & D. Löve, *A.M. Gordon s.n.* [BAYLU]
- Packera tampicana* (DC.) C. Jeffrey, *L.D. Smith* 427 [TEX]
- Palafoxia callosa* (Nutt.) Torr. & A. Gray, *L.D. Smith* 252 [TEX]
- τ§ *Palafoxia rosea* (Bush) Cory, *G. Hardeman s.n.* [BAYLU]
- *§ *Parthenium hysterophorus* L., *A. Kashani* 238 [BAYLU]
- § *Pinaropappus roseus* (Less.) Less., *E.B. Steuben s.n.* [BAYLU]
- Pluchea camphorata* (L.) DC., *S.A. Conry* 27 [BAYLU]
- Pluchea odorata* (L.) Cass., *L.D. Smith* 114 [TEX]
- § *Pyrrhopappus carolinianus* (Walter) DC., *P.D. Whitson s.n.* [BAYLU]
- § *Pyrrhopappus grandiflorus* (Nutt.) Nutt., *L.D. Smith* 1182 [BAYLU]
- Pyrrhopappus pauciflorus* (D. Don) DC., *W.C. Holmes* 5048 [BAYLU]
- Ratibida columnifera* (Nutt.) Wooton & Standl., *W.C. Holmes* 5178 [BAYLU]
- Rudbeckia hirta* L. var. *pulcherrima* Farw., *L.D. Smith* 868 [TEX]
- Senecio ampullaceus* Hook., *V.C. Hannick* 203 [BAYLU]
- * *Senecio vulgaris* L., *W.C. Holmes* 11198 [BAYLU, TEX]
- τ *Silphium albiflorum* A. Gray, *W.C. Holmes* 6559 [BAYLU]
- Silphium radula* Nutt., *L.D. Smith* 225 [BAYLU]
- * *Silybum marianum* *W.C. Holmes* 7659 [BAYLU]
- Smallanthus uvedalius* (L.) Mack. ex Small, *W.C. Holmes* 5071 [BAYLU]
- Solidago altissima* L., *L.D. Smith* 52-621 [TEX]
- § *Solidago canadensis* L., *W.C. Holmes* 5438 [BAYLU]
- § *Solidago nemoralis* Aiton, *W.C. Holmes* 7528 [BAYLU]
- § *Solidago odora* Aiton, *L. Pace s.n.* [BAYLU]
- Solidago radula* Nutt., *L.D. Smith* 1031 [TEX]
- § *Solidago rigida* L., *W.C. Holmes* 6215 [BAYLU]
- § *Solidago rugosa* Mill., *E. Haskell s.n.* [BAYLU]
- * *Sonchus asper* (L.) Hill, *L.D. Smith* 409 [BAYLU, TEX]
- *§ *Sonchus oleraceus* L., *S. Wilbur s.n.* [BAYLU]
- Symphyotrichum divaricatum* (Nutt.) G.L. Nesom, *C.L. York & L.D. Smith* 108 [TEX]
- Symphyotrichum drummondii* (Lindl.) G.L. Nesom var. *texanum* (Burgess) G.L. Nesom, *L.D. Smith* 52-622 [TEX]
- Symphyotrichum ericoides* (L.) G.L. Nesom var. *ericoides*, *L.D. Smith* 52-624 [TEX]
- τ *Symphyotrichum eulae* (Shinners) G.L. Nesom, *E.L. Hamby s.n.* [BAYLU]
- Symphyotrichum lanceolatum* (Willd.) G.L. Nesom subsp. *lanceolatum*, *L.D. Smith* 1014 [TEX]
- § *Symphyotrichum praealtum* (Poir.) G.L. Nesom var. *praealtum*, *W.C. Holmes* 12029 [BAYLU, TEX]
- * *Taraxacum laevigatum* (Willd.) DC., *L. Pace s.n.* [TEX]
- * *Taraxacum officinale* F.H. Wigg., *D.E. Wivagg* 101 [BAYLU]
- Tetraneuris linearifolia* (Hook.) Greene, *L.D. Smith* 1157 [TEX]
- Tetraneuris scaposa* (DC.) Greene, *L.D. Smith* 543 [TEX]

- Thelesperma filifolium* (Hook.) A. Gray var. *filifolium*, *L.D. Smith* 565 [TEX]
Thelesperma simplicifolium A. Gray, *L.D. Smith* 1133 [TEX]
 § *Thymophylla tenuiloba* (DC.) Small var. *tenuiloba*, *S.K. Carter & K.V. Hooker* 39 [BAYLU]
 *§ *Tragopogon dubius* Scop., *V.C. Hannick* 274 [BAYLU]
Verbesina encelioides (Cav.) Benth. & Hook.f. ex A. Gray subsp. *exauriculata* (Robins. & Greenm.) J.R. Coleman, *L.D. Smith* 270 [TEX]
Verbesina virginica L., *W.C. Holmes* 5465 [BAYLU, TEX]
Vernonia baldwinii Torr., *C.L. York* 46144 [TEX]
Vernonia baldwinii Torr. subsp. *interior* (Small) Faust, *L.D. Smith* 255 [BAYLU]
 § *Vernonia lindheimeri* A. Gray & Englem., *V.C. Hannick* 220 [BAYLU]
 § *Vernonia missurica* Raf., *W.C. Holmes* 5089 [BAYLU]
Vernonia texana (A. Gray) Small, *L.D. Smith* 871 [TEX]
Viguiera dentata (Cav.) Spreng., *W.C. Holmes* 5458 [BAYLU, TEX]
Xanthisma texanum DC. subsp. *drummondii* (Torr. & A. Gray) Semple, *L.D. Smith* 55 [TEX]
Xanthium strumarium L. var. *canadense* (Mill.) Torr. & A. Gray, *L.D. Smith* 1039 [TEX]

BERBERIDACEAE

- Berberis trifoliata* Moric., *E.L. Hamby s.n.* [BAYLU]
 *§ *Nandina domestica* Thunb., *C. Nguyen* 146 [BAYLU]

BIGNONIACEAE

- Campsis radicans* (L.) Seem. ex Bureau, *W.C. Holmes* 6209 [BAYLU]
 § *Catalpa speciosa* (Warder) Warder ex Engelm., *F. Hurst s.n.* [BAYLU]
Chilopsis linearis (Cav.) Sweet, *L.D. Smith* 715 [TEX]

BORAGINACEAE

- *§ *Buglossoides arvensis* (L.) I.M. Johnst., *W.C. Holmes* 5031 [BAYLU]
 § *Cryptantha texana* (A. DC.) Greene, *A.M. Gordon s.n.* [BAYLU]
 *§ *Heliotropium amplexicaule* Vahl., *L.V. Kirkendall s.n.* [BAYLU]
Heliotropium convolvulaceum (Nutt.) A. Gray, *L.D. Smith* 168 [TEX]
 * *Heliotropium indicum* L., *W.C. Holmes* 4936 [BAYLU]
 § *Heliotropium procumbens* Mill., *E. Haskell s.n.* [BAYLU]
Heliotropium tenellum (Nutt.) Torr., *W.C. Holmes* 5306 [BAYLU]
Lithospermum incisum Lehm., *L.D. Smith* 1136 [TEX]
Myosotis macrosperma Engelm., *L.D. Smith* 1064 [TEX]
 § *Myosotis verna* Nutt., *L.D. Smith s.n.* [BAYLU]
 τ *Onosmodium bejariense* DC. ex A. DC. var. *bejariense*, *L.D. Smith* 1159 [TEX]

BRASSICACEAE

- * *Brassica kaber* (DC.) Wheeler, *E.L. Hamby s.n.* [BAYLU]
 *§ *Brassica nigra* (L.) Koch., *L.D. Smith s.n.* [BAYLU]
 *§ *Brassica rapa* L. var. *campestris* (L.) Koch., *B. Smith s.n.* [BAYLU]
 *§ *Camelina microcarpa* Andrz. ex DC., *G. Staples s.n.* [BAYLU]
 * *Capsella bursa-pastoris* (L.) Medik., *L.D. Smith* 358 [BAYLU, TEX]
 * *Cardamine hirsuta* L., *R. Johnston s.n.* [BAYLU]
 * *Chorispora tenella* (Pall.) DC., *D.N. Denham* 64 [BAYLU]
Descurainia pinnata (Walter) Britton, *B. Glass s.n.* [BAYLU]
 * *Descurainia sophia* (L.) Webb ex Prantl., cited in Pace (1923)
Draba brachycarpa Nutt. ex Torr. & A. Gray, *L.D. Smith* 343 [BAYLU, TEX]
Draba cuneifolia Nutt. ex Torr. & A. Gray, *L.D. Smith* 375a [TEX]

- Draba platycarpa* Torr. & A. Gray, *W.C. Holmes* 5246 [BAYLU, TEX]
Draba reptans (Lam.) Fernald, *L.D. Smith* 362 [BAYLU, TEX]
 * *Draba verna* L., cited in Pace (1923)
 * *Erysimum repandum* L., *L.D. Smith* 367 [BAYLU, TEX]
 § *Lepidium austrinum* Small, *L. Threadgill s.n.* [BAYLU]
Lepidium densiflorum Schrad., *L.D. Smith* 1085 [TEX]
 § *Lepidium oblongum* Small, *W.C. Holmes* 12112 [BAYLU]
Lepidium virginicum L., *L.D. Smith* 446 [TEX]
 § *Paysonia auriculata* (Engelm. & A. Gray) O’Kane & Al-Shehbaz, *L.D. Smith* 1186 [BAYLU]
Physaria argyraea (A. Gray) O’Kane & Al-Shehbaz, *R. Murdock s.n.* [BAYLU]
Physaria densiflora (A. Gray) O’Kane & Al-Shehbaz, *L.D. Smith* 375 [TEX]
 τ§ *Physaria engelmannii* (A. Gray) O’Kane & Al-Shehbaz, *J. Graff* 51 [BAYLU]
Physaria gracilis (Hook.) O’Kane & Al-Shehbaz, *L.D. Smith* 372 [BAYLU, TEX]
 τ *Physaria recurvata* (Engelm. ex A. Gray) O’Kane & Al-Shehbaz, *L.D. Smith* 349 [BAYLU, TEX]
 * *Rapistrum rugosum* (L.) All., *L.D. Smith* 1070 [TEX]
 * *Rorippa nasturtium-aquaticum* (L.) Hayek, *W.C. Holmes* 5260 [BAYLU]
Rorippa palustris (L.) Besser, *L.D. Smith* 1028 [TEX]
Sibara virginica (L.) Rollins, *W.C. Holmes* 6332 [BAYLU]
 *§ *Sisymbrium altissimum* L., *G.B. Yaege s.n.* [BAYLU]
 *§ *Sisymbrium irio* L., *W.C. Holmes* 6333 [BAYLU]
 * *Sisymbrium officinale* (L.) Scop., *L.D. Smith* 1119 [TEX]

BUDDLEJACEAE

- § *Polypremum procumbens* L., *L.D. Smith* 327 [BAYLU, TEX]

CACTACEAE

- Coryphantha echinus* (Engelm.) Britton & Rose, *W.C. Holmes* 5261 [BAYLU]
 * *Coryphantha missouriensis* (Sweet) Britton & Rose, *W.C. Holmes* 15590 [BAYLU]
 *§ *Cylindropuntia imbricata* (Haw.) F.M. Kunth, *V.C. Hannick s.n.* [BAYLU]
Echinocereus reichenbachii (Terscheck & Walp.) F. Haage, mapped in Turner et al. (2003)
Opuntia engelmannii Salm-Dyck, *A. Olson* 70 [BAYLU]
 *§ *Opuntia engelmannii* Salm-Dyck var. *lindheimeri* (Engelm.) B.D. Parfitt & Pinkaba, *E. Miller* 27 [BAYLU]
 § *Opuntia humifusa* (Raf.) Raf., *L.D. Smith* 216 [BAYLU]
Opuntia leptocaulis DC., *L.D. Smith* 873 [TEX]
Opuntia lindheimeri Engelm., *R.J. Bennett s.n.* [BAYLU]
Opuntia macrorhiza Engelm., *L.D. Smith* 1128 [TEX]
Opuntia phaeacantha Engelm., mapped in Turner et al. (2003)

CALLITRICHACEAE

- § *Callitriche heterophylla* Pursh., *W.C. Holmes* 6425 [BAYLU]
 § *Callitriche nuttallii* Torr., *W.C. Holmes* 14616 [BAYLU]
 § *Callitriche terrestris* Raf., *W.C. Holmes* 13111 [BAYLU]

CAMPANULACEAE

- Triodanis leptocarpa* (Nutt.) Nieuwl., *L.D. Smith* 505 [TEX]
Triodanis perfoliata (L.) Nieuwl. var. *biflora* (Ruiz & Pav.) T.R. Bradley, *L.D. Smith s.n.* [BAYLU]
Triodanis perfoliata (L.) Nieuwl. var. *perfoliata*, *L.D. Smith* 521 [BAYLU, TEX]

CAPPARACEAE

Polanisia dodecandra (L.) DC. subsp. *trachyspermum* (T. & G.) Iltis, W.C. Holmes 6214 [BAYLU]

CAPRIFOLIACEAE

- § *Lonicera albiflora* Torr. & A. Gray, V.C. Hannick 280 [BAYLU]
 *§ *Lonicera fragrantissima* Lindl. & Paxton, K.A. Crosthwaite 66 [BAYLU]
 *§ *Lonicera japonica* Thunb., J. Bookout 12 [BAYLU]
 *§ *Lonicera maackii* (Rupr.) Herder, B. Smith s.n. [BAYLU]
 *§ *Lonicera tatarica* L., L.D. Smith s.n. [BAYLU]
 § *Lonicera sempervirens* L., W.C. Holmes 7628 [BAYLU]
Sambucus nigra L. var. *canadensis* (L.) Bolli, L.D. Smith 595 [TEX]
Symphoricarpos orbiculatus Moench, L.D. Smith 900 [TEX]
Viburnum rufidulum Raf., L.D. Smith 1049 [TEX]

CARYOPHYLLACEAE

- Arenaria benthamii* Fenzl ex Torr. & A. Gray, L.D. Smith 361 [TEX]
 *§ *Arenaria serpyllifolia* L., W.C. Holmes 5248 [BAYLU]
Cerastium brachypodium (Engelm. ex A. Gray) B.L. Rob., W.C. Holmes 5244 [BAYLU, TEX]
 *§ *Cerastium glomeratum* Thuill., V. Sullivan s.n. [BAYLU]
 § *Loeflingia squarrosa* Nutt., W.C. Holmes 12565 [BAYLU]
 § *Paronychia virginica* Spreng., L. Pace s.n. [BAYLU]
 * *Polycarpon tetraphyllum* (L.) L., V.C. Hannick 210 [BAYLU]
Sagina decumbens (Elliot) Torr. & A. Gray, L. Cole s.n. [BAYLU]
Silene antirrhina L., W.C. Holmes 5579 [BAYLU, TEX]
 *§ *Silene gallica* L., W.C. Holmes 13769 [BAYLU]
 *§ *Stellaria media* (L.) Vill., P. Sarjeant s.n. [BAYLU]
 § *Stellaria prostrata* Baldw., cited in Pace (1923)
 *§ *Vaccaria hispanica* (Mill.) Rauschert, W.C. Holmes 5265 [BAYLU]

CELASTRACEAE

- § *Euonymus atropurpurea* Jacq., B.A. Rolf s.n. [BAYLU]
 *§ *Euonymus japonicus* Thunb., cited in Pace (1923)

CERATOPHYLLACEAE

Ceratophyllum demersum L., D. Vodopich s.n. [BAYLU]

CHENOPODIACEAE

- *† *Chenopodium album* L., L.D. Smith 309 [TEX]
 * *Chenopodium ambrosioides* L., L.D. Smith 961 [TEX]
 § *Chenopodium berlandieri* Moq. var. *boscianum* (Moq.) Wahl, W.C. Holmes 5466 [BAYLU]
 *§ *Chenopodium botrys* L., E.L. Hamby s.n. [BAYLU]
Chenopodium standleyanum Aellen, L.D. Smith 993 [TEX]
 § *Cycloloma atriplicifolium* (Spreng.) J.M. Coult., E.L. Hamby s.n. [BAYLU]
Monolepis nuttalliana (Schult.) Greene, L.D. Smith 1167 [TEX]

CISTACEAE

- Helianthemum georgianum* Chapm., W.C. Holmes 13260 [BAYLU]
Helianthemum rosmarinifolium Pursh, L.D. Smith 735 [TEX]
Lechea mucronata Raf., L.D. Smith 859 [TEX]
 τ *Lechea san-sabeana* (Buckley) Hodgdon, W.C. Holmes 12026 [BAYLU]

Lechea tenuifolia Michx., W.C. Holmes 13261 [BAYLU]

CLUSIACEAE

Hypericum drummondii (Grev. & Hook.) Torr. & A. Gray, W.C. Holmes, F. Gehlbach & N. Gehlbach 9831 [BAYLU]
Hypericum hypericoides (L.) Crantz, L.D. Smith 943 [TEX]

CONVOLVULACEAE

*†§ *Convolvulus arvensis* L., cited in Pace (1923)
Convolvulus equitans Benth., L.D. Smith 774 [TEX]
 § *Dichondra carolinensis* Michx., R.J. Barnett s.n. [BAYLU]
Evolvulus nuttallianus Schult., W.C. Holmes 8262 [BAYLU]
Evolvulus sericeus Sw., W.C. Holmes 13264 [BAYLU]
 *§ *Ipomoea batatas* (L.) Lam., J. Bookout 74 [BAYLU]
Ipomoea cordatotriloba Dennst., var. *cordatotriloba* L.D. Smith 305 [TEX]
Ipomoea lacunosa L., C.L. York & L.D. Smith 151 [TEX]
 *§ *Ipomoea quamoclit* L., W.C. Holmes 5179 [BAYLU]
 *§ *Ipomoea wrightii* A. Gray, L.D. Smith 159 [TEX]
 § *Merremia dissecta* (Jacq.) Hallier f., J. McClinton s.n. [BAYLU]

CORNACEAE

Cornus drummondii C.A. Mey., L.D. Smith 442 [BAYLU, TEX]

CRASSULACEAE

§ *Crassula aquatica* (L.) Schonland, W.C. Holmes 13115 [BAYLU]
Sedum nuttallianum Raf., W.C. Holmes 8241 [BAYLU]

CUCURBITACEAE

* *Citrullus lanatus* (Thunb.) Matsum. & Nakai var. *lanatus*, L.D. Smith 294 [BAYLU, TEX]
 § *Cucumis anguria* L., L.D. Smith 68 [BAYLU, TEX]
 § *Cucumis melo* L. [var. *dudain* (L.) Naud.], W.C. Holmes & J.N. Mink 15307 [BAYLU]
Cucurbita foetidissima Kunth, L.D. Smith 219 [BAYLU, TEX]
Cyclanthera dissecta (Torr. & A. Gray) Arn., W.C. Holmes 5043 [BAYLU]
 τ *Ibervillea lindheimeri* (A. Gray) Greene, L.D. Smith 538 [TEX]
Melothria pendula L., B.C. Tharp s.n. [TEX]
Sicyos angulatus L., C.L. York 46069 [TEX]

CUSCUTACEAE

Cuscuta cuspidata Engelm., L.D. Smith 147 [BAYLU, TEX]
Cuscuta exaltata Engelm., L.D. Smith 1034 [BAYLU, TEX]
 § *Cuscuta gronovii* Willd. ex Schult., W.C. Holmes 5271 [BAYLU]
Cuscuta indecora Choisy var. *longisepala* Yunck., L.D. Smith 164 [TEX]
 § *Cuscuta obtusiflora* Kunth, W.C. Holmes 10108 [BAYLU]
Cuscuta pentagona Engelm., L.D. Smith 1001 [TEX]
Cuscuta pentagona Engelm. var. *pubescens* (Engelm.) Yunck., L.D. Smith 694 [TEX]
 § *Cuscuta polygonorum* Engelm., L.D. Smith s.n. [BAYLU]

EBENACEAE

Diospyros texana Scheele, W.C. Holmes 5032 [BAYLU]
Diospyros virginiana L., L.D. Smith s.n. [BAYLU]

EUPHORBIACEAE

- § *Acalypha gracilens* A. Gray, *L.D. Smith* 254 [BAYLU]
Acalypha ostryifolia Riddell, *L.D. Smith* 71 [TEX]
Acalypha phleoides Cav., *W.C. Holmes* 8243 [BAYLU]
- § *Chamaesyce cordifolia* (Elliot) Small, *W.C. Holmes* 5442 [BAYLU]
Chamaesyce maculata (L.) Small, *L.D. Smith* 170 [TEX]
Chamaesyce missurica (Raf.) Shinnery, *C.L. York* 46157 [BAYLU]
Chamaesyce nutans (Lag.) Small, *W.C. Holmes* 8721 [BAYLU]
- § *Chamaesyce prostrata* (Aiton) Small, *C.L. York* 46253 [TEX]
Chamaesyce serpens (Kunth) Small, *L.D. Smith* 892 [TEX]
- § *Chamaesyce stictospora* (Engelm.) Small, *Johnson, Jenson, & Brown s.n.* [BAYLU]
Chamaesyce villifera (Scheele) Small, mapped in Turner, et al. (2003)
Cnidoscolus texanus (Mül.Arg.) Small, *L.D. Smith* 583 [TEX]
Croton capitatus Michx. var. *lindheimeri* (Engelm. & A. Gray) Mül.Arg., *L.D. Smith* 40 [TEX]
Croton glandulosus L. var. *glandulosus* *L.D. Smith* 7 [BAYLU, TEX]
Croton monanthogynus Michx., *L.D. Smith* 283 [BAYLU, TEX]
Croton texensis (Klotzsch) Mül.Arg., *L.D. Smith* 214 [TEX]
Ditaxis humilis (Engelm. & A. Gray) Pax, *L.D. Smith* 1101 [TEX]
Ditaxis mercurialina (Nutt.) J.M. Coult., *L.D. Smith* 1152 [TEX]
Euphorbia bicolor Engelm. & A. Gray, *C.L. York & L.D. Smith* 105 [BAYLU, TEX]
- § *Euphorbia cyathophora* Murray, *L.D. Smith* 979 [TEX]
- § *Euphorbia dentata* Michx., *L.D. Smith* 81 [TEX]
Euphorbia longicuris Scheele, *M.H. Mayfield* 1253 [TEX]
Euphorbia marginata Pursh, *L.D. Smith* 70 [TEX]
Euphorbia spathulata Lam., *L.D. Smith* 689 [TEX]
- § *Euphorbia tetrapora* Engelm., *L. Pace s.n.* [BAYLU]
Leptopus phyllanthoides (Nutt.) G.L. Webster, *W.C. Holmes* 5155 [BAYLU, TEX]
Phyllanthus polygonoides Nutt. ex Spreng., *W.C. Holmes* 5174 [BAYLU]
- * *Phyllanthus urinaria* L., *H. Beatty s.n.* [LL]
- *§ *Ricinus communis* L., cited in Pace (1923)
Stillingia sylvatica L., *L.D. Smith* 841 [TEX]
Stillingia texana I.M. Johnst., *M.H. Mayfield* 1236 [TEX]
Tragia betonicifolia Nutt., *L.D. Smith* 1110 [TEX]
Tragia brevispica Engelm. & A. Gray, *W.C. Holmes* 5167 [BAYLU]
Tragia nepetifolia Cav., cited in Pace (1923)
Tragia ramosa Torr., *L.D. Smith* 889 [TEX]
- § *Tragia urticifolia* Michx., *L.D. Smith s.n.* [BAYLU]
- *†§ *Triadica sebifera* (L.) Small, *B. Humphrey* 76 [BAYLU]

FABACEAE

- § *Acacia angustissima* (Mill.) Kuntze var. *hirta* (Nutt.) B.L. Rob., *A.M. Gordon s.n.* [BAYLU]
Acacia farnesiana (L.) Willd., *W.C. Holmes* 7615 [BAYLU, TEX]
- * *Albizia julibrissin* Durazzo, *L.D. Smith* 300 [BAYLU, TEX]
Amorpha fruticosa L., *W.C. Holmes* 5023 [BAYLU]
Astragalus austrinus Small, Mapped in Turner et al. (2003)
- § *Astragalus crassicarpus* Nutt., *L. Black s.n.* [BAYLU]
Astragalus nuttallianus DC., *E. Merritt s.n.* [BAYLU]
Astragalus pleianthum Shinnery, Mapped in Turner et al. (2003)
- τ *Astragalus reflexus* Torr. & A. Gray, *L.D. Smith* 1087 [TEX]
Baptisia nuttalliana Small, *L.D. Smith* 844 [TEX]

- * *Caesalpinia gilliesii* (Hook.) Wall. ex D. Dietr., *W.C. Holmes 6455* [BAYLU, TEX]
- Centrosema virginianum* (L.) Benth., *L.D. Smith 838* [TEX]
- Cercis canadensis* L. var. *texensis* (S. Wats.) M. Hopkins, *L.D. Smith 949* [TEX]
- § *Chamaecrista fasciculata* (Michx.) Greene, *L.D. Smith 32* [BAYLU]
- Clitoria mariana* L., *L.D. Smith 606* [TEX]
- Dalea aurea* Nutt. ex Pursh, *W.C. Holmes 9539* [TEX]
- Dalea compacta* Spreng. var. *compacta* C.L. York *46154* [TEX]
- Dalea enneandra* Nutt., *L.D. Smith 946* [TEX]
- Dalea multiflora* (Nutt.) Shinnery, *L.D. Smith 930* [TEX]
- τ§ *Dalea obovata* (Torr. & A. Gray) Shinnery, *W.C. Holmes 13267* [BAYLU]
- § *Dalea purpurea* Vent. var. *purpurea*, cited in Pace (1923)
- τ *Dalea tenuis* (J.M. Coult.) Shinnery, mapped in Turner, et al. (2003)
- Desmanthus acuminatus* Benth., *W.C. Holmes 13266* [BAYLU]
- Desmanthus illinoensis* (Michx.) MacMill. ex B.L. Rob. & Fernald, *L.D. Smith 828* [TEX]
- Desmanthus leptolobus* Torr. & A. Gray, *L.D. Smith 588* [BAYLU, TEX]
- Desmanthus velutinus* Scheele, *L.D. Smith 1124* [TEX]
- § *Desmodium obtusum* (Muhl. ex Willd.) DC., *Hardeman s.n.* [BAYLU]
- Desmodium paniculatum* (L.) DC., *L.D. Smith 1029* [TEX]
- § *Desmodium psilophyllum* Schltld., *L.D. Smith 297* [TEX]
- Desmodium sessilifolium* (Torr.) Torr. & A. Gray, *L.D. Smith 861* [TEX]
- Eysenhardtia texana* Scheele, mapped in Turner, et al. (2003)
- Galactia striata* (Jacq.) Urban, *L.D. Smith 876* [TEX]
- τ *Galactia texana* (Scheele) A. Gray, *L.D. Smith 837* [TEX]
- Galactia volubilis* (L.) Britton, *W.C. Holmes 13463* [BAYLU]
- Gleditsia triacanthos* L., *L.D. Smith 978* [TEX]
- § *Glottidium vesicaria* (Jacq.) R.M. Harper, *W.C. Holmes 4937* [BAYLU]
- § *Indigofera miniata* Ortega, *W.C. Holmes 5252* [BAYLU]
- *§ *Lathyrus hirsutus* L., *J.N. Mink 1114* [BAYLU]
- Lathyrus pusillus* Elliot, *L.D. Smith 434* [BAYLU, TEX]
- Lespedeza texana* Britton, *L.D. Smith 770* [TEX]
- § *Lespedeza violacea* (L.) Pers., *C. Humphreys s.n.* [BAYLU]
- Lespedeza virginica* (L.) Britton, *L.D. Smith 853* [TEX]
- § *Lotus unifoliolatus* (Hook.) Benth., *L.D. Smith 611* [BAYLU]
- τ *Lupinus texensis* Hook., *W.C. Holmes 6447* [BAYLU]
- *§ *Medicago arabica* (L.) Huds., *E.L. Hamby s.n.* [BAYLU]
- * *Medicago lupulina* L., *L.D. Smith 407* [TEX]
- * *Medicago minima* (L.) L., *L.D. Smith 453* [BAYLU, TEX]
- *§ *Medicago polymorpha* L., *Yarbrough s.n.* [BAYLU]
- * *Medicago sativa* L., *L.D. Smith 830* [TEX]
- * *Melilotus albus* Medik., *L.D. Smith 744* [TEX]
- * *Melilotus indicus* (L.) All., *W.C. Holmes 7897* [BAYLU]
- * *Melilotus officinalis* (L.) Lam., *L.D. Smith 1158* [TEX]
- Mimosa aculeaticarpa* Ortega, mapped in Turner, et al. (2003)
- Mimosa borealis* A. Gray, *L.D. Smith 1071* [TEX]
- Mimosa roemeriana* Scheele, *L.D. Smith 957* [TEX]
- Neptunia lutea* (Leavenw.) Benth., *W.C. Holmes 13265* [BAYLU]
- Parkinsonia aculeata* L., *A. Kashani 232* [BAYLU]
- Pediomelum cuspidatum* (Pursh) Rydb., *W.C. Holmes 6459* [TEX]
- τ§ *Pediomelum cyphocalyx* (A. Gray) Rydb., *P.J. Talley s.n.* [BAYLU]
- § *Pediomelum digitatum* (Nutt. ex Torr. & A. Gray) Isely, *L.D. Smith 153* [BAYLU]

- τ *Pediomelum hypogaeum* (Nutt. ex Torr. & A. Gray) Rydb. var. *scaposum* (A. Gray) Mahler, *L.D. Smith* 467 [BAYLU, TEX]
 § *Pediomelum latestipulatum* (Shinners) Mahler var. *latestipulum* W.C. Holmes 13770 [BAYLU]
Pediomelum rhombifolium (Torr. & A. Gray) Rydb., *L.D. Smith* 660 [BAYLU, TEX]
Prosopis glandulosa Torr., *L.D. Smith* 784 [TEX]
Psoralidium tenuiflorum (Pursh) Rydb., W.C. Holmes 5081 [BAYLU]
 *† *Pueraria montana* (Lour.) Merr. var. *lobata* (Willd.) Maesen & S. Almeida, W.C. Holmes 14189
 & J.N. Mink [BAYLU]
Rhynchosia latifolia Nutt. ex Torr. & A. Gray, *L.D. Smith* 836 [TEX]
 § *Rhynchosia minima* (L.) DC., *L.D. Smith* 1184 [BAYLU]
Rhynchosia senna Gillies ex Hook., *L.D. Smith* 769 [TEX]
Rhynchosia senna var. *texana*, W.C. Holmes 5254 [BAYLU]
 § *Robinia pseudoacacia* L., J. Johnson 68 [BAYLU]
Senna roemeriana (Scheele) H.S. Irwin & Barneby, W.C. Holmes 5042 [BAYLU]
Sesbania emerus (Aubl.) Urban, *L.D. Smith* 176 [TEX]
 § *Sesbania herbacea* (Mill.) McVaugh, cited in Pace (1923)
 § *Sesbania vesicaria* (Jack.) Ell., W.C. Holmes & J.N. Mink 15587 [BAYLU]
Sophora affinis Torr. & A. Gray, W.C. Holmes 6263 [BAYLU]
Sophora secundiflora (Ortega) Lag. ex DC., mapped in Turner, et al. (2003)
Strophostyles helvola (L.) Elliot, W.C. Holmes 6211 [BAYLU]
 § *Strophostyles leioperma* (Torr. & A. Gray) Piper, B.C. Tharp s.n. [TEX]
 § *Tephrosia virginiana* (L.) Pers., B. Guarr s.n. [BAYLU]
 * *Trifolium arvense* L., mapped in Turner, et al. (2003)
 § *Trifolium carolinianum* Michx., D. Williamson 63 [BAYLU]
 *§ *Trifolium dubium* Sibth., P. Sarjeant s.n. [BAYLU]
 *§ *Trifolium incarnatum* L., K. Coleman s.n. [BAYLU]
 * *Trifolium polymorphum* Poir., *L.D. Smith* 429 [TEX]
 *§ *Trifolium repens* L., S. Meloche 71 [BAYLU]
 *§ *Trifolium vesiculosum* Savi, W.C. Holmes 13269 [BAYLU]
 τ *Vicia ludoviciana* Nutt. var. *ludoviciana*, L.D. Smith 1145 [TEX]
 § *Vicia minutiflora* A. Dietr., E. Haskell s.n. [BAYLU]
 *§ *Vicia sativa* L., E. Saldana 49 [BAYLU]
 * *Vicia villosa* Roth., W.C. Holmes 6461 [BAYLU]
 * *Vicia villosa* Roth. subsp. *varia* (Host) Corb., C. Grose s.n. [BAYLU]
 *§ *Vigna unguiculata* (L.) Walp. subsp. *unguiculata*, cited in Pace (1923)
 *§ *Wisteria sinensis* (Sims) DC., K. Coleman s.n. [BAYLU]
Zornia bracteata J.F. Gmel., *L.D. Smith* s.n. [BAYLU]

FAGACEAE

- τ *Quercus buckleyi* Nixon & Dorr, *L.D. Smith* 986 [TEX]
Quercus fusiformis Small, *L.D. Smith* 52-614 [TEX]
Quercus macrocarpa Michx., *L.D. Smith* 52-609 [TEX]
 § *Quercus marilandica* Münchh., W.C. Holmes 11189 [BAYLU]
 § *Quercus muehlenbergii* Engelm., F. Gehlbach s.n. [BAYLU]
 § *Quercus nigra* L., *L.D. Smith* 384a [BAYLU]
Quercus shumardii Buckley, A. Kashani 207 [BAYLU]
Quercus sinuata Walter, *L.D. Smith* 226 [BAYLU]
Quercus sinuata Walter var. *breviloba* (Torr.) C.H. Müll., W.C. Holmes 5433 [BAYLU, TEX]
 § *Quercus stellata* Wangenh., W.C. Holmes 11188 [BAYLU]
 § *Quercus virginiana* Mill., *L.D. Smith* s.n. [BAYLU]

FUMARIACEAE

- Corydalis curvisiliqua* Engelm. var. *grandibracteata* (Fedde) G.B. Ownbey, *L.D. Smith* 355 [TEX]
Corydalis micrantha (Engelm. ex A. Gray) A. Gray, *W.C. Holmes* 5030 [BAYLU]
Corydalis micrantha (Engelm. ex A. Gray) A. Gray var. *australis* (Chapm.) G.B. Ownbey, *G.B. Ownbey & F. Ownbey* 1654 [TEX]

GENTIANACEAE

- § *Centaurium beyrichii* (Torr. & A. Gray) B.L. Rob., *W.C. Holmes* 9538 [BAYLU]
 §* *Centaurium pulchella* (Sw.) Druse, *W.C. Holmes* 15868 [BAYLU]
Centaurium tenuiflorum (Hoffmanns. & Link) Fritsch, *W.C. Holmes* 7259 [BAYLU]
Centaurium texense (Griseb.) Fernald, *W.C. Holmes* 5278 [BAYLU, TEX]
Eustoma exaltatum (L.) Salisb. ex. Don, mapped in Turner, et al. (2003)
Eustoma grandiflorum (Raf.) Shinnery, *J.R. Massey* 1724 [TEX]
Sabatia campestris Nutt., *L.D. Smith* 629 [TEX]

GERANIACEAE

- *§ *Erodium cicutarium* (L.) L'Hér. ex Aiton, *R.C. Gardner* 546 [BAYLU]
Erodium texanum A. Gray, *W.C. Holmes* 6962 [BAYLU]
Geranium carolinianum L., *E.L. Hamby* s.n. [BAYLU]
Geranium texanum (Trel.) A. Heller, *C.L. York* 46110 [TEX]

HALORAGACEAE

- § *Myriophyllum heterophyllum* Michx., *R. Fuentes* s.n. [BAYLU]

HIPPOCASTANACEAE

- Aesculus arguta* Buckley, *W.C. Holmes* 5242 [BAYLU]

HYDRANGEACEAE

- § *Philadelphus grandiflorus* Willd., *L.D. Smith* s.n. [BAYLU]

HYDROPHYLLACEAE

- Nama hispidum* A. Gray, *L.D. Smith* 593 [BAYLU, TEX]
Nama jamaicense L., *L.D. Smith* 793 [TEX]
Nemophila phacelioides Nutt., *W.C. Holmes* 5020 [BAYLU]
Phacelia congesta Hook., *L.D. Smith* 1121 [TEX]
 § *Phacelia glabra* Nutt., leg. ign. [BAYLU]
 § *Phacelia hirsuta* Nutt., *E.L. Hamby* s.n. [BAYLU]
 § *Phacelia patuliflora* (Engelm. & A. Gray) A. Gray, *L. Pace* 51 [BAYLU]
Phacelia strictiflora (Engelm. & A. Gray) A. Gray, *L.D. Smith* 1063 [TEX]

JUGLANDACEAE

- Carya illinoensis* (Wangenh.) K. Koch, *L.D. Smith* 216 [TEX]
Juglans microcarpa Berl. var. *microcarpa*, cited in Pace (1923)
Juglans nigra L., *V.C. Hannick* 286 [BAYLU]

KRAMERIACEAE

- Krameria lanceolata* Torr., *W.C. Holmes* 5659 [BAYLU]

LAMIACEAE

- * *Ajuga reptans* L., *L.D. Smith* 1179 [TEX]

- Hedeoma acinoides* Scheele, *L.D. Smith* 489 [TEX]
Hedeoma drummondii Benth., *W.C. Holmes* 8263 [BAYLU]
 § *Hedeoma hispida* Pursh, *Henderson s.n.* [BAYLU]
Hedeoma reverchonii (A. Gray) A. Gray, *L.D. Smith* 1169 [TEX]
 * *Lamium amplexicaule* L., *L.D. Smith* 356 [BAYLU, TEX]
Lycopus americanus Muhl. ex Barton, *L.D. Smith* 783 [TEX]
 § *Lycopus virginicus* L., *L.D. Smith s.n.* [BAYLU]
 * *Marrubium vulgare* L., *L.D. Smith* 19 [BAYLU, TEX]
 *§ *Mentha piperita* L., *W.C. Holmes* 13506 [BAYLU]
 *§ *Moluccella laevis* L., *Houser s.n.* [BAYLU]
 § *Monarda citriodora* Cerv. ex Lag., *W.C. Holmes* 5274 [BAYLU]
Monarda clinopodioides A. Gray, *D. Williamson s.n.* [BAYLU]
Monarda fistulosa L. var. *mollis* (L.) Benth., *L.D. Smith* 738 [TEX]
Monarda punctata L. var. *intermedia* (E.M McClint. & Epling) Waterf., *L.D. Smith* 640 [TEX]
 § *Monarda punctata* L. subsp. *punctata* var. *lasiodonta* A. Gray, cited in Pace (1923)
 * *Nepeta cataria* L., mapped in Turner, et al. (2003)
Physostegia intermedia (Nutt.) Engelm. & A. Gray, *L.D. Smith* 664 [TEX]
Physostegia pulchella Lundell, *C.L. Lundell* 18817 [LL]
Salvia azurea Michx. ex Lam. var. *grandiflora* Benth., *C.L. York* 46143 [TEX]
Salvia coccinea Buchoz ex Etl., *L.D. Smith* 670 [TEX]
 τ *Salvia engelmannii* A. Gray, *L.D. Smith* 523 [TEX]
Salvia farinacea Benth., *W.C. Holmes* 5257 [BAYLU]
 § *Salvia reflexa* Hornem., *W.C. Holmes* 11192 [BAYLU]
Salvia texana (Scheele) Torr., *C.L. York* 46025 [TEX]
 § *Scutellaria cardiophylla* Engelm., & A. Gray, *M.J. Rice s.n.* [BAYLU]
Scutellaria drummondii Benth., *W.C. Holmes* 5266 [BAYLU]
Scutellaria drummondii Benth. var. *edwardsiana* B.L. Turner, *L.D. Smith* 455 [TEX]
Scutellaria ovata Hill, *L.D. Smith* 657 [BAYLU]
 § *Scutellaria resinosa* Torr., *E.L. Hamby s.n.* [BAYLU]
 § *Scutellaria wrightii* A. Gray, *J. Johnson* 76 [BAYLU]
 § *Stachys crenata* Raf., *L.D. Smith* 435 [BAYLU, TEX]
Stachys drummondii Benth., *P.J. Talley s.n.* [BAYLU]
Teucrium canadense L., *L.D. Smith* 733 [TEX]
Warnockia scutellarioides (Engelm. & A. Gray) M.W. Turner, *M.H. Mayfield* 1258 [TEX]

LAURACEAE

- § *Lindera benzoin* (L.) Blume var. *benzoin*, cited in Pace (1923)

LINACEAE

- Linum berlandieri* Hook. var. *berlandieri* *W.C. Holmes* 5658 [TEX]
 *§ *Linum grandiflorum* Desf., *M.D. Adams* 97 [BAYLU]
Linum imbricatum (Raf.) Shinnery, *L.D. Smith* 681 [TEX]
 § *Linum pratense* (J.B. Norton) Small, *W.C. Holmes* 5245 [BAYLU]
 *§ *Linum usitatissimum* L., *S. Meloche* 53 [BAYLU]

LOASACEAE

- Mentzelia oligosperma* Nutt. ex Sims., *M.H. Mayfield* 1235 [TEX]

LOGANIACEAE

- *§ *Gelsemium sempervirens* (L.) Ait. f., *P. Sarjeant s.n.* [BAYLU]
Mitrella petiolata (J.F. Gmel.) Torr. & A. Gray, *L.D. Smith* 66 [BAYLU, TEX]

Spigelia hedyotide A. DC., *L.D. Smith* 507 [TEX]

LYTHRACEAE

- Ammannia coccinea* Rottb., *W.C. Holmes* 5469 [BAYLU]
 *§ *Lagerstroemia indica* L., *J. Scholin s.n.* [BAYLU]
Lythrum alatum Pursh, *C.L. York* 46092 [LL]
Lythrum alatum Pursh var. *lanceolatum* (Elliot) Rottb. & A. Gray ex Rothr., *L.D. Smith* 72 [TEX]
Lythrum californicum Torr. & A. Gray, *L.D. Smith* 72 [TEX]
 § *Rotala ramosior* (L.) Koehne, *L.D. Smith* 792 [TEX]

MALVACEAE

- Abutilon berlandieri* Gray ex S. Wats., *M. Meliza s.n.* [BAYLU]
Abutilon fruticosum Guill. & Perr., *W.C. Holmes* 5083 [BAYLU]
Abutilon incanum (Link.) Sweet, cited in Pace (1923)
 *§ *Abutilon theophrasti* Medik., *P. Broome s.n.* [BAYLU]
Callirhoe digitata Nutt., cited in Pace (1923)
Callirhoe involucrata (Torr. & A. Gray) A. Gray, *L.D. Smith* 1118 [TEX]
Callirhoe leiocarpa R.F. Martin, *C.C. Albers* 47026 [TEX]
Callirhoe pedata (Nutt. ex Hook.) A. Gray, *M.H. Mayfield* 1247 [TEX]
 *§ *Malva neglecta* Wallr., *K. Herbold* 52 [BAYLU]
 § *Malvastrum aurantiacum* (Scheele) Walp., *W.C. Holmes* 5281 [BAYLU]
Malvaviscus arboreus Dill. ex Cav. var. *drummondii* (Torr. & A. Gray) Schery, *W.C. Holmes* 5462 [BAYLU]
 § *Modiola caroliniana* (L.) G. Don, *L.D. Smith* 1187 [BAYLU]
Rhynchosida physocalyx (A. Gray) Fryxell, *L.D. Smith* 203 [TEX]
 * *Sida abutifolia* Mill., *L.D. Smith* 30 [BAYLU, TEX]
Sida rhombifolia L., *L.D. Smith* 241 [TEX]
Sida spinosa L., *L.D. Smith* 965 [TEX]

MELIACEAE

- * *Melia azedarach* L., *L.D. Smith* 199 [TEX]

MENISPERMACEAE

- Cocculus carolinus* (L.) DC., *L.D. Smith* 935 [TEX]
Menispermum canadense L., mapped in Turner, et al. (2003)

MOLLUGINACEAE

- Mollugo verticillata* L., *L.D. Smith* 967 [TEX]

MORACEAE

- * *Broussonetia papyrifera* (L.) L'Hér. ex Vent., *W.C. Holmes* 6262 [BAYLU]
 *§ *Fatoua villosa* (Thunb.) Nakai, *W.C. Holmes* 12600 [BAYLU]
 § *Maclura pomifera* (Raf.) C.K. Schneid., *W.C. Holmes* 5171 [BAYLU]
 * *Morus alba* L., *L.D. Smith* 379 [TEX]
Morus microphylla Buckley, *W.C. Holmes* 6438 [BAYLU, TEX]
Morus rubra L., *W.C. Holmes* 5022 [BAYLU]

MYRICACEAE

- * *Myrica cerifera* L., *S. Posey* 15 [SMU]

NELUMBONACEAE

Nelumbo lutea (Willd.) Pers., *L. Reich s.n.* [BAYLU]

NYCTAGINACEAE

- § *Allionia incarnata* L., *W.C. Holmes 4942* [BAYLU]
Boerhavia diffusa L., *L.D. Smith 193* [BAYLU]
Boerhavia erecta L., *W.C. Holmes 5459* [BAYLU, TEX]
Mirabilis albida (Walter) Heimerl, *W.C. Holmes 12028* [BAYLU]
τ *Mirabilis gigantea* (Standl.) Shinnery, *W.C. Holmes 6208* [BAYLU]
*§ *Mirabilis jalapa* L., *B. Guarr s.n.* [BAYLU]
§ *Mirabilis linearis* (Pursh) Heimerl, *W.C. Holmes 10542* [BAYLU, TEX]

NYMPHAEACEAE

- Nuphar advena* (Aiton) W.T. Aiton in Aiton & W.T. Aiton, *C.L. York 46231* [TEX]
§ *Nymphaea mexicana* Zucc., *S.A. Conry 25* [BAYLU]
§ *Nymphaea odorata* Aiton, *S.A. Conry 26* [BAYLU]

OLEACEAE

- Forestiera pubescens* Nutt., *W.C. Holmes 4995* [BAYLU]
Fraxinus americana L., *A. Kashani 206* [BAYLU]
Fraxinus pennsylvanica Marshall, *W.C. Holmes 6229* [BAYLU]
§ *Fraxinus albican* Buckley, *L.D. Smith 1036* [TEX]
*§ *Ligustrum japonicum* Thunb., *J.N. Mink 1011* [BAYLU]
*§ *Ligustrum sinense* Lour., *W.C. Holmes 13773* [BAYLU]

ONAGRACEAE

- § *Calylophus berlandieri* Spach, *W.C. Holmes 5256* [BAYLU]
Calylophus berlandieri Spach subsp. *pinifolius* (Engelm. ex A. Gray) Towner, *C.L. York 46074* [TEX]
Gaura brachycarpa Small, *L.D. Smith 439* [TEX]
§ *Gaura coccinea* Nutt. Ex Pursh, *K. Lloyd 93* [BAYLU]
Gaura drummondii (Spach) Torr. & A. Gray, *L.D. Smith 1103* [TEX]
Gaura filipes Spach., cited in Pace (1923)
§ *Gaura lindheimeri* Engelm. & A. Gray, *R. Wilson s.n.* [BAYLU]
Gaura parviflora Douglas ex Lehm., *C.L. York 46115* [TEX]
Gaura sinuata Nutt. ex Ser., *M.H. Mayfield 1257* [TEX]
Gaura suffulta Engelm. ex A. Gray var. *suffulta* C.L. York 46027 [TEX]
Ludwigia glandulosa Walter, *L.D. Smith 863* [TEX]
Ludwigia leptocarpa (Nutt.) H. Hara, *L.D. Smith 1043* [TEX]
§ *Ludwigia octovalvis* (Jacq.) P.H. Raven, *E. Haskell s.n.* [BAYLU]
§ *Ludwigia palustris* (L.) Elliott, *W.C. Holmes 5088* [BAYLU]
Ludwigia peploides (Kunth) P.H. Raven, *W.C. Holmes 10232* [BAYLU, TEX]
Ludwigia repens J.R. Forst., *L.D. Smith 917* [TEX]
§ *Oenothera grandis* (Britton) Smyth, *J. Toguchi 84* [BAYLU]
Oenothera laciniata Hill, *L.D. Smith 404* [TEX]
Oenothera macrocarpa Nutt. subsp. *macrocarpa*, *C.L. York 46149* [TEX]
Oenothera rhombipetala Nutt. ex Torr. & A. Gray, *W.C. Holmes 12391* [BAYLU]
Oenothera spachiana Torr. & A. Gray, *W.C. Holmes 14618* [BAYLU]
Oenothera speciosa Nutt., *L.D. Smith 418* [BAYLU, TEX]
Oenothera triloba Nutt., *L.D. Smith 441* [TEX]
§ *Stenosiphon linifolius* (Nutt. ex E. James) Heynh., *W.C. Holmes 6221* [BAYLU]

OROBANCHACEAE

- Agalinis fasciculata* (Elliot) Raf., mapped in Turner, et al. (2003)
Agalinis heterophylla (Nutt.) Small ex Britton, W.C. Holmes 6222 [BAYLU, TEX]
 *§ *Bellardia trixago* (L.) All., W.C. Holmes 9924 [BAYLU, TEX]
Castilleja indivisa Engelm., L.D. Smith 389 [BAYLU]
 τ§ *Castilleja purpurea* (Nutt.) G. Don var. *lindheimeri* (A. Gray) Shinnery, L.D. Smith s.n. [BAYLU]
Castilleja purpurea (Nutt.) G. Don var. *purpurea*, M.H. Mayfield 1261 [TEX]
 § *Orobanche ludoviciana* Nutt. subsp. *multiflora* (Nutt.) Collins ex. H.L. White & W.C. Holmes, K. Wilkins s.n. [BAYLU]
 *§ *Orobanche ramosa* L., E. Ramos 95 [BAYLU]

OXALIDACEAE

- Oxalis dillenii* Jacq., S. Meloche 32 [BAYLU]
 τ *Oxalis drummondii* A. Gray, L.D. Smith 1055 [TEX]
 § *Oxalis violacea* L., R. Johnston s.n. [BAYLU]

PAPAVERACEAE

- § *Argemone albiflora* Hornem. subsp. *texana* G.B. Ownbey, B.E. Winn 58 [BAYLU]
 τ *Argemone aurantiaca* G.B. Ownbey, L.D. Smith 1154 [TEX]
Argemone polyanthemus (Fedde) G.B. Ownbey, L.D. Smith 42 [TEX]
 *§ *Papaver rhoeas* L., J. Lindholm 144 [BAYLU]
 *§ *Papaver somniferum* L., S. Tracy s.n. [BAYLU]

PASSIFLORACEAE

- *§ *Passiflora caerulea* L., W.C. Holmes 12156 [BAYLU]
Passiflora incarnata L., C.L. York & L.D. Smith 137 [BAYLU]
Passiflora lutea L., L.D. Smith 981 [TEX]

PEDALIACEAE

- Proboscidea louisianica* (Mill.) Thell. subsp. *louisianica* W.C. Holmes 13028 [BAYLU, TEX]

PHRYMACEAE

- *§ *Mazus pumilus* (Burm. f.) Steenis, Booker 39 [BAYLU]
 § *Erythranthe (Mimulus) inamoena* (Greene) Nesom, R.C. Gardner 566 [BAYLU]

Erythranthe (Mimulus) inamoenus (Greene) Nesom,

PHYTOLACCACEAE

- Phytolacca americana* L., W.C. Holmes 5464 [BAYLU, TEX]
Rivina humilis L., W.C. Holmes 5175 [BAYLU, TEX]

PLANTAGINACEAE

- § *Bacopa monnieri* (L.) Pennell, A.M. Gordon s.n. [BAYLU]
Bacopa rotundifolia (Michx.) Wettst., L.D. Smith 877 [BAYLU]
 *§ *Linaria vulgaris* Mill., Housey s.n. [BAYLU]
 § *Maurandya antirrhiniflora* Humb. & Bonpl. ex Willd., W.C. Holmes 12830 [BAYLU, TEX]
 § *Mecardonia procumbens* (Mill.) Small, W.C. Holmes 5467 [BAYLU]
Nuttallanthus canadensis (L.) D.A. Sutton, E.L. Hamby s.n. [BAYLU]
 § *Nuttallanthus texanus* (Scheele) D.A. Sutton, L.D. Smith 386 [TEX]
Penstemon cobaea Nutt., W.C. Holmes 5026 [BAYLU, TEX]
 § *Penstemon digitalis* Nutt. ex Sims, W.C. Holmes 13774 [BAYLU]

- Penstemon laevigatus* Aiton, cited in Pace (1923)
Penstemon laxiflorus Pennell, *L.D. Smith 1084* [TEX]
 § *Penstemon tubaeformis* Nutt., *L.D. Smith 482* [BAYLU]
Plantago aristata Michx., *L.D. Smith 579* [TEX]
Plantago elongata Pursh, *W.C. Holmes 13121* [BAYLU]
Plantago helleri Small, *L.D. Smith 463* [TEX]
Plantago heterophylla Nutt., *L.D. Smith 403* [TEX]
 § *Plantago hookeriana* Fisch & C.A. Mey., *L.D. Smith 1184* [BAYLU]
Plantago patagonica Jacq., *L.D. Smith 511* [TEX]
Plantago rhodosperma Decne., *L.D. Smith 1143* [TEX]
Plantago virginica L., *C.L. York 46095* [TEX]
Plantago wrightiana Decne., *L.D. Smith 536* [TEX]
 *§ *Veronica arvensis* L., *A.M. Gordon s.n.* [BAYLU]
Veronica peregrina L., *L.D. Smith 373* [BAYLU, TEX]
 *§ *Veronica persica* Poir., *A.M. Gordon s.n.* [BAYLU]
 * *Veronica polita* Fr., *L.D. Smith 1069* [TEX]

PLATANACEAE

- Platanus occidentalis* L. var. *occidentalis* *L.D. Smith 574* [TEX]

POLEMONIACEAE

- Ipomopsis ruba* (L.) Wherry, *W.C. Holmes 6660* [BAYLU, TEX]
Phlox cuspidata Scheele, *L.D. Smith 1056* [TEX]
 § *Phlox drummondii* Hook. subsp. *mcallisteri* (Whitehouse) Wherry, *L.D. Smith 396* [TEX]
Phlox pilosa L., *L.D. Smith 460* [BAYLU]
 τ *Phlox roemeriana* Scheele, *O. & R. Sanders s.n.* [LL]

POLYGALACEAE

- Polygala alba* Nutt., *L.D. Smith 545* [BAYLU, TEX]
 *§ *Polygala lindheimeri* A. Gray, cited in Pace (1923)

POLYGONACEAE

- Eriogonum annuum* Nutt., *L.D. Smith 90* [TEX]
Eriogonum longifolium Nutt., *W.C. Holmes 6225* [TEX]
 § *Polygonum amphibium* L. var. *emersum* Michx., *C.L. York & L.D. Smith 148* [BAYLU]
 *§ *Polygonum aviculare* L., *L.D. Smith 284* [BAYLU]
Polygonum buxiforme Small, *L.D. Smith 1013* [TEX]
Polygonum densiflorum Meisn., *L.D. Smith 292* [BAYLU]
Polygonum hydropiperoides Michx., *W.C. Holmes 6227* [BAYLU]
Polygonum lapathifolium L., *W.C. Holmes 6261* [BAYLU]
Polygonum pennsylvanicum L., *V.C. Hannick 231* [BAYLU]
Polygonum ramosissimum Michx., *W.C. Holmes 6265* [BAYLU, TEX]
 § *Polygonum tenue* Michx., *L.D. Smith 596* [BAYLU]
Rumex altissimus Wood, *L.D. Smith 445* [BAYLU, TEX]
 * *Rumex crispus* L., *C.L. York 46083* [TEX]
Rumex hastatulus Baldwin, *L.D. Smith 484* [TEX]
 * *Rumex pulcher* L., *L.D. Smith 519* [TEX]

PORTULACACEAE

- Claytonia virginica* L., *L.D. Smith 417* [TEX]
 * *Portulaca grandiflora* Hook., cited in Pace (1923)

- *§ *Portulaca oleracea* L., W.C. Holmes 15887 [BAYLU]
- § *Portulaca pilosa* L., E.L. Hamby s.n. [BAYLU]
- Portulaca umbraticola* Kunth. subsp. *lanceolata* (Engelm.) J.F. Matthews & Ketron, L.D. Smith 314 [TEX]

PRIMULACEAE

- *§ *Anagallis arvensis* L., W.C. Holmes 12861 [BAYLU]
- § *Anagallis minima* (L.) E.H.L. Krause, W.C. Holmes 13112 [BAYLU]
- § *Samolus ebracteatus* Kunth subsp. *cuneatus* (Small) R. Kunth, E. Haskell s.n. [BAYLU]
- § *Samolus valerandi* L. subsp. *parviflorus* (Raf.) Hultén, W.C. Holmes 12158 [BAYLU]

PUNICACEAE

- * *Punica granatum* L., W.C. Holmes & J.N. Mink 15593 [BAYLU]

RANUNCULACEAE

- * *Adonis annua* L., R.D. Gooch 72 [BAYLU]
- Anemone berlandieri* Pritz., L.D. Smith 342 [TEX]
- § *Anemone caroliniana* Walter, A.M. Gordon s.n. [BAYLU]
- § *Aquilegia canadensis* L., cited in Pace (1923)
- § *Clematis drummondii* Torr. & A. Gray, L. Pace s.n. [BAYLU]
- Clematis pitcheri* Torr. & A. Gray, V.C. Hannick 224 [BAYLU]
- § *Clematis reticulata* Walter, mapped in Turner, et al. (2003)
- * *Clematis terniflora* DC., W.C. Holmes 13507 [BAYLU]
- Clematis viorna* L., cited in Pace (1923)
- *§ *Consolida ajacis* (L.) Schur, V.C. Hannick 279 [BAYLU]
- Delphinium carolinianum* Walter subsp. *carolinianum*, Hulme s.n. [BAYLU]
- Delphinium carolinianum* Walter subsp. *virescens* (Nutt.) R.E. Brooks, C.L. York 46077 [TEX]
- Myosurus minimus* L., W.C. Holmes 6331 [BAYLU, TEX]
- Ranunculus fascicularis* Muhl. ex Bigelow, L.D. Smith 1178 [TEX]
- § *Ranunculus hispidus* Michx. var. *nitidus* (Chapm.) T. Duncan, T.L. Riley 43 [BAYLU]
- Ranunculus macranthus* Scheele, L.D. Smith 415 [TEX]
- § *Ranunculus pusillus* Poir., B.T. Wells s.n. [BAYLU]

RHAMNACEAE

- Berchemia scandens* (Hill) K. Kock, L.D. Smith 950 [TEX]
- Ceanothus americanus* L., M.H. Mayfield 1263 [TEX]
- Ceanothus herbaceus* Raf., W.C. Holmes 5034 [BAYLU, TEX]
- § *Rhamnus caroliniana* Walter, C.L. York & L.D. Smith 127 [BAYLU]
- * *Zizyphus obtusifolia* (Hook. ex Torr. & A. Gray) A. Gray, W.C. Holmes 5263 [BAYLU, TEX]
- * *Zizyphus jujuba* Mill., L.D. Smith 1164 [BAYLU, TEX]

ROSACEAE

- Crataegus crus-galli* L., W.C. Holmes 13119 [BAYLU]
- Crataegus mollis* Scheele, W.C. Holmes 12309 [BAYLU]
- § *Crataegus spathulata* Michx., W.C. Holmes 13470 [BAYLU]
- Crataegus viridis* L., W.C. Holmes 7616 [TEX]
- * *Duchesnea indica* (Andr.) Focke, K.A. Crosthwaite 143 [BAYLU]
- Geum canadense* Jacq., L.D. Smith 497 [TEX]
- Prunus angustifolia* Marshall, L.D. Smith 369 [TEX]
- Prunus caroliniana* (Mill.) Aiton, L.P. & M.S. Young s.n. [TEX]

- Prunus mexicana* S. Wats., *L.D. Smith* 212 [BAYLU, TEX]
 *§ *Prunus persica* (L.) Batsch, *J.A. Reed s.n.* [BAYLU]
 *§ *Pyrus communis* L., *B. Humphrey* 77 [BAYLU]
 *§ *Rosa bracteata* J.C. Wendl., *L.D. Smith s.n.* [BAYLU]
 * *Rosa multiflora* Thumb. ex Murr., *W.C. Holmes* 5028 [BAYLU, TEX]
 § *Rubus aboriginum* Rydb., *W. Hawk s.n.* [BAYLU]
 § *Rubus apogaeus* L.H. Bailey, *S. Meloche* 30 [BAYLU]
Rubus trivialis Michx., *L.D. Smith* 368 [BAYLU]
 § *Sanguisorba annua* (Nutt. ex Hook.) Torr. & A. Gray, *L. Pace s.n.* [BAYLU]
Sanguisorba canadensis L., cited in Pace (1923)

RUBIACEAE

- Cephalanthus occidentalis* L., *C.L. York* 46160 [TEX]
Diodia teres Walter, *L.D. Smith* 874 [TEX]
Galium aparine L., *C.L. York* 46098 [TEX]
Galium circaezans Michx., *L.D. Smith* 496 [BAYLU, TEX]
Galium pilosum Aiton, *L.D. Smith* 669 [TEX]
 § *Galium texense* A. Gray, *M.M. Pursley s.n.* [BAYLU]
Galium virgatum Nutt., *J.R. Massey* 1970 [TEX]
Hedyotis nigricans (Lam.) Fosberg, *W.C. Holmes* 5082 [BAYLU]
 § *Houstonia micrantha* (Shinners) Terrell, *V.C. Hannick* 202 [BAYLU]
Houstonia pusilla Schoepf, *L.D. Smith* 1062 [TEX]
 § *Houstonia rosea* (Raf.) Terrell, *L.D. Smith* 345 [TEX]
Richardia tricocca (Torr. & A. Gray) Standl., *L.D. Smith* 1163 [TEX]
 *§ *Sherardia arvensis* L., *H.L. White* 82 [BAYLU]

RUTACEAE

- *§ *Citrus* × *aurantium* L. subsp. *aurantium*, cited in Pace (1923) [Probably ornamental]
 *§ *Poncirus trifoliata* (L.) Raf., *Trammell s.n.* [BAYLU]
Ptelea trifoliata L., *W.C. Holmes* 5019 [BAYLU]
Ptelea trifoliata L. subsp. *trifoliata* var. *mollis* Torr. & A. Gray, *L.D. Smith* 651 [TEX]
Zanthoxylum americanum Mill., cited in Pace (1923)
Zanthoxylum clava-herculis L., *C.L. York* 46148 [TEX]

SALICACEAE

- *§ *Populus alba* L., *L. Pace s.n.* [BAYLU]
Populus deltoides Bartram ex Marshall, *B. Humphrey* 22 [BAYLU]
Salix nigra Marshall, *C.L. York* 46162 [TEX]

SAPINDACEAE

- *† *Cardiospermum halicacabum* L., *W.C. Holmes* 4935 [BAYLU]
 *§ *Koelreuteria paniculata* Lam., *H. Beatty s.n.* [BAYLU]
Sapindus saponaria L. var. *drummondii* (Hook. & Arn.) L.D. Benson, *W.C. Holmes* 8336 [BAYLU]
Ungnadia speciosa Endl., *W.C. Holmes* 6458 [BAYLU]

SAPOTACEAE

- Sideroxylon lanuginosum* Michx., *C.L. York* 46246 [TEX]

SAURURACEAE

- *§ *Saururus cernuus* L., *W.C. Holmes* 14622 [BAYLU]

SAXIFRAGACEAE

Lepuropetalon spathulatum Elliot, *B. Benner & R. Kormanik* 63 [BAYLU]

SCROPHULARIACEAE

Leucospora multifida (Michx.) Nutt., *C.L. York* 46237 [TEX]

* *Verbascum thapsus* L., *L.D. Smith* 221 [BAYLU, TEX]

SIMAROUBACEAE

*§ *Ailanthus altissima* (Mill.) Swingle, *W.C. Holmes* 5262 [BAYLU]

SOLANACEAE

§ *Calibrachoa parviflora* (Juss.) D'Arcy, *J.N. Mink* 1383 [BAYLU]

* *Capsicum annuum* L., mapped in Turner, et al. (2003)

*§ *Datura stramonium* L., cited in Pace (1923)

§ *Datura wrightii* Regel, *L.B. Smith s.n.* [BAYLU]

*§ *Petunia axillaris* (Lam.) Britton, Sterns, & Poggenb., *A.M. Gordon s.n.* [BAYLU]

Physalis angulata L., *W.C. Holmes* 12388 [BAYLU]

Physalis cinerascens (Dunal) Hitchc., *W.C. Holmes* 8726 [BAYLU]

Physalis heterophylla Nees, *L.D. Smith* 620 [TEX]

Physalis longifolia Nutt., *L.D. Smith* 621 [TEX]

§ *Physalis mollis* Nutt., *E.L. Hamby s.n.* [BAYLU]

Physalis pubescens L., *L.D. Smith* 59 [TEX]

§ *Physalis pumila* Nutt., *M. Jackson s.n.* [BAYLU]

§ *Solanum carolinense* L., *L.D. Smith s.n.* [BAYLU]

Solanum dimidiatum Raf., *C.L. York* 46113 [TEX]

Solanum elaeagnifolium Cav., *L.D. Smith* 253 [TEX]

Solanum ptychanthum Dunal, *L.D. Smith* 18 [TEX]

Solanum rostratum Dunal, *R. Runyon* 2219 [TEX]

Solanum triquetrum Cav., *L.D. Smith* 1176 [TEX]

STERCULIACEAE

*§ *Firmiana simplex* W. Wright, *W.C. Holmes* 12549 [BAYLU]

TAMARICACEAE

*†§ *Tamarix gallica* L., *L.D. Smith s.n.* [BAYLU]

*† *Tamarix ramosissima* Ledeb., *L.D. Smith* 798 [LL]

ULMACEAE

Celtis laevigata Willd., *W.C. Holmes* 5435 [BAYLU, TEX]

Celtis laevigata Willd. var. *reticulata* Torr., *V.C. Hannick* 219 [BAYLU]

Celtis tenuifolia Nutt., cited in Pace (1923)

§ *Ulmus alata* Michx., *J.N. Mink* 1023 [BAYLU]

Ulmus americana L., *W.C. Holmes* 5085 [BAYLU]

Ulmus crassifolia Nutt., *W.C. Holmes* 5434 [BAYLU, TEX]

§ *Ulmus rubra* Muhl., *W.C. Holmes & J.N. Mink* 15302 [BAYLU]

URTICACEAE

Parietaria pensylvanica Muhl. ex Willd., *L.D. Smith* 425 [TEX]

Urtica chamaedryoides Pursh, *L.D. Smith* 336 [TEX]

VALERIANACEAE

- Valerianella amarella* (Lindh. ex Engelm.) Krok, *W.C. Holmes* 5250 [BAYLU]
Valerianella radiata (L.) Dufur., *L.D. Smith* 348 [TEX]
Valerianella woodsiana (Torr. & A. Gray) Walp., *L.D. Smith* 408 [TEX]

VERBENACEAE

- Aloysia gratissima* (Gillies & Hook.) Tronc., *E.L. Hamby s.n.* [BAYLU]
Callicarpa americana L., *L.D. Smith* 89 [BAYLU, TEX]
Glandularia bipinnatifida (Nutt.) Nutt., *C.L. York* 46100 [TEX]
Glandularia pumila (Rydb.) Umber, *L. Pace s.n.* [BAYLU]
Lantana urticoides Hayek, *E.L. Hamby s.n.* [BAYLU]
§ *Lippia lanceolata* Michx., *L.D. Smith s.n.* [BAYLU]
§ *Lippia nodiflora* (L.) Michx., *V.C. Hannick* 242 [BAYLU]
§ *Verbena canescens* Kunth, *S. Meloche* 47 [BAYLU]
Verbena halei Small, *C.L. York* 46087 [TEX]
* *Verbena officinalis* L., cited in Pace (1923)
§ *Verbena urticifolia* L., *A.M. Gordon s.n.* [BAYLU]
Verbena xutha Lehm., *L.D. Smith* 649 [TEX]
*§ *Vitex agnus-castus* L., *Williams s.n.* [BAYLU]

VIOLACEAE

- Hybanthus verticillatus* (Ortega) Baill., *W.C. Holmes* 7660 [BAYLU]
Viola bicolor Pursh, *L.D. Smith* 360 [TEX]
Viola sororia Willd., *L.D. Smith* 335 [TEX]

VISCACEAE

- Phoradendron tomentosum* (DC.) Engelm. ex A. Gray, *L.D. Smith* 184 [TEX]

VITACEAE

- Ampelopsis arborea* (L.) Koehne, *L.D. Smith* 612 [TEX]
Ampelopsis cordata Michx., *L.D. Smith* 948 [TEX]
Cissus incisa Des Moul., *L.D. Smith* 652 [TEX]
τ§ *Parthenocissus heptaphylla* (Buckley) Britton ex Small, *L.D. Smith* 1003 [TEX]
Parthenocissus quinquefolia (L.) Planch., *C.L. York* 46154 [BAYLU, TEX]
§ *Vitis aestivalis* Michx., *Stewart s.n.* [BAYLU]
§ *Vitis cinerea* (Engelm.) Engelm. ex Millard, *B.T. Wells s.n.* [BAYLU]
Vitis cinerea (Engelm.) Millardet var. *helleri* (L.H. Bailey) M.O. Moore, *C.L. York* 46136 [TEX]
Vitis mustangensis Buckley, *C.L. York* 46233 [TEX]
§ *Vitis riparia* Michx., *Simmons s.n.* [BAYLU]
§ *Vitis vulpina* L., *L.D. Smith* 146 [BAYLU]

ZYGOPHYLLACEAE

- § *Kallstroemia maxima* (L.) Hook. & Arn., cited in Pace (1923)
Kallstroemia parviflora Norton, *L.D. Smith* 200 [TEX]
* *Tribulus terrestris* L., *W. C. Holmes* 15881. [BAYLU]

MONOCOTS

AGAVACEAE

- Yucca aloifolia* L., *E. Merritt s.n.* [BAYLU] [Probably ornamental, cultivated]
§ *Yucca arkansana* Trel., *W.C. Holmes* 13250 [BAYLU]

- § *Yucca louisianensis* Trel., *J. Bookout* 46 [BAYLU]
- τ *Yucca pallida* McKelvey, *V.C. Hannick* 218 [BAYLU]
- τ *Yucca rupicola* Scheele, *E. Whitehouse s.n.* [TEX]

ALISMATACEAE

- Echinodorus berteroi* (Spreng.) Fassett, *W.C. Holmes* 5468 [BAYLU]
- § *Echinodorus cordifolius* L., *L.D. Smith s.n.* [BAYLU]
- § *Sagittaria longiloba* Engelm. ex J.G. Sm., *E.L. Hamby s.n.* [BAYLU]
- Sagittaria platyphylla* (Engelm.) J.G. Sm., *L.D. Smith* 111 [TEX]

ALLIACEAE

- Allium canadense* L. var. *canadense* L.D. Smith 506 [TEX]
- Allium drummondii* Regel, *L.D. Smith* 457 [TEX]
- *§ *Ipheion uniflorum* (Lindl.) Raf., *M.J. McCall* 75 [BAYLU]
- Nothoscordum bivalve* (L.) Britton, *L.D. Smith* 354 [BAYLU, TEX]

AMARYLLIDACEAE

- § *Cooperia drummondii* Herb., *W.C. Holmes* 5091 [BAYLU]
- Cooperia pedunculata* Herb., *L. Pace s.n.* [BAYLU]
- *§ *Crinum bulbispermum* (Burm.) Milne-Redhead & Schweickerdy, *L. Thomas* 83 [BAYLU]
- Habranthus tubispathus* (L'Hér.) Traub, *W.C. Holmes* 5282 [BAYLU]
- *§ *Leucojum aestivum* L., *T. Corley* 62 [BAYLU]
- *§ *Narcissus jonquilla* L., *D. Trammell s.n.* [BAYLU]
- *§ *Zephyranthes candida* (Lindl.) Herbert, *W.C. Holmes* 13249 [BAYLU]

ARACEAE

- Arisaema dracontium* (L.) Schott, *L.D. Smith* 980 [TEX]

ARECACEAE

- § *Sabal minor* (Jacq.) Pers., *K. Morris* 039 [BAYLU]

ASPARAGACEAE

- * *Asparagus officinalis* L., *L.D. Smith* 318 [BAYLU, TEX]

BROMELIACEAE

- § *Tillandsia recurvata* (L.) L., *W.C. Holmes* 11195, *D.E. Wivagg*, *R.S. Baldrige* [BAYLU]

COMMELINACEAE

- § *Commelina diffusa* Burm. f., *J.D. Hooker* 82 [BAYLU]
- Commelina erecta* L., *L.D. Smith* 982 [TEX]
- Commelina virginica* L., *B. Guarr s.n.* [BAYLU]
- τ *Tinantia anomala* (Torr.) C.B. Clarke, *Davidson* 84 [BAYLU]
- τ§ *Tradescantia edwardsiana* Tharp, *R.C. Gardner* 583 [BAYLU]
- § *Tradescantia gigantea* Rose, *E. Saldana* 27 [BAYLU]
- § *Tradescantia hirsutiflora* Bush, *Cooley s.n.* [BAYLU]
- Tradescantia occidentalis* (Britton) Smyth, *L. Pace s.n.* [TEX]
- Tradescantia ohiensis* Raf., *C.L. York* 46019 [TEX]
- §* *Tradescantia pallida* (Rose) D.R. Hunt, *W.C. Holmes* 15877 [BAYLU]
- § *Tradescantia reverchonii* Bush, *Robin s.n.* [BAYLU]

CYPERACEAE

- § *Carex blanda* Dewey, *M. Gray* 26 [BAYLU]
- § *Carex brevior* (Dewey) Mack. ex Lundell, *W.C. Holmes* 13263 [BAYLU]
- Carex bulbostylis* Mack., *L.D. Smith* 393 [BAYLU, TEX]
- Carex crus-corvi* Shuttlew. ex Kunze, *L.D. Smith* 923 [TEX]
- § *Carex emoryi* Dewey, *W.C. Holmes* 5656 [BAYLU]
- Carex grisea* Wahlenb., *L.D. Smith* 1091 [TEX]
- Carex leavenworthii* Dewey, *L.D. Smith* 1092 [TEX]
- § *Carex longii* Mack., *V.C. Hannick* 206 [BAYLU]
- Carex microdonta* Torr. & Hook., *W.C. Holmes* 13120 [BAYLU]
- Carex muehlenbergii* Schkuhr ex Willd. var. *enervis* Boott, *W.C. Holmes* 5650 [BAYLU, TEX]
- Carex perdentata* S.D. Jones, *L.D. Smith* 479 [TEX]
- Carex planostachys* Kunze, *C. Higgins* 50 [BAYLU]
- Carex retroflexa* Muhl. ex Willd., *L.D. Smith* 394 [TEX]
- Carex tetrastachya* Scheele, *L.D. Smith* 486b [TEX]
- Cyperus acuminatus* Torr. & Hook., *L.D. Smith* 751 [TEX]
- Cyperus articulatus* L., *J. Reverchon* 3577 [TEX]
- § *Cyperus croceus* Vahl, *W.C. Holmes* 12025 [BAYLU]
- § *Cyperus echinatus* (L.) A.W. Wood, *W.C. Holmes* 13349 [BAYLU]
- Cyperus erythrorhuzos* Muhl., *D. Vodopich s.n.* [BAYLU]
- *§ *Cyperus esculentus* L., *L. Pace s.n.* [BAYLU]
- Cyperus odoratus* L., *L.D. Smith* 329 [TEX]
- Cyperus pseudovegetus* Sted., *W.C. Holmes* 13257 [BAYLU]
- Cyperus retroflexus* Buckley, *L.D. Smith* 786 [TEX]
- *§ *Cyperus rotundus* L., *F. Hurst s.n.* [BAYLU]
- Cyperus setigerus* Torr. & Hook., *C.L. York* 46103 [TEX]
- Cyperus squarrosus* L., *L.D. Smith* 278 [TEX]
- Cyperus strigosus* L., *D. Vodopich s.n.* [BAYLU]
- § *Eleocharis acicularis* (L.) Roem. & Schult, *V.C. Hannick* 234 [BAYLU]
- § *Eleocharis acutisquamata* Buckley, *L.D. Smith* 473 [BAYLU]
- § *Eleocharis engelmannii* Steud., *L.D. Smith* 975 [BAYLU, TEX]
- Eleocharis geniculata* (L.) Roem. & Schult., *L.D. Smith* 959 [BAYLU, TEX]
- § *Eleocharis lanceolata* Fernald, *J.N. Mink* 1224 [BAYLU]
- Eleocharis montevidensis* Kunth., *L.D. Smith s.n.* [BAYLU]
- Eleocharis oculata* S.G. Sm., *L.D. Smith* 473 [TEX]
- Eleocharis palustris* (L.) Roem. & Schult., *W.C. Holmes* 5033 [BAYLU]
- §* *Eleocharis quadrangulata* (Michx.) Roem. & Schult., *W.C. Holmes* 15863 [BAYLU]
- Fuirena simplex* Vahl var. *aristulata* (Torr.) Kral, *L.D. Smith* 94 [BAYLU, TEX]
- Fuirena simplex* Vahl var. *simplex* *L.D. Smith* 702 [BAYLU]
- § *Isolepis carinata* Hook. & Arn. ex Torr., *W.C. Holmes* 14617 [BAYLU]
- * *Rhynchospora macrostachya* Torr., *W.C. Holmes & J.N. Mink* 15585 [BAYLU]
- § *Schoenoplectus acutus* (Muhl. ex Bigelow) Å. Löve & D. Löve, *L. Pace s.n.* [BAYLU]
- Schoenoplectus californicus* (C.A. Mey.) Soják, *C.L. York & L.D. Smith* 116 [TEX]
- § *Scleria oligantha* Michx., *W.C. Holmes* 13251 [BAYLU]

HEMEROCALLIDACEAE

- *§ *Hemerocallis fulva* L., *J.R. Branch s.n.* [BAYLU]

HYACINTHACEAE

- Camassia scilloides* (Raf.) Cory, *C.L. York* 46020 [TEX]
- * *Muscari racemosum* Guss. ex Ten., *E.L. Hamby s.n.* [BAYLU]

*§ *Ornithogalum umbellatum* L., *E.L. Hamby s.n.* [BAYLU]

HYDROCHARITACEAE

*†§ *Hydrilla verticillata* (L. f.) Royle, *S.A. Conry 5* [BAYLU]

IRIDACEAE

§ *Alophia drummondii* (Graham) R.C. Foster, *A. Pitman 34* [BAYLU]

*§ *Iris germanica* L., *L. Junek 30* [BAYLU]

Nemastylis geminiflora Nutt., *L.D. Smith 1088* [TEX]

§ *Sisyrinchium angustifolium* Mill., *B. Williams s.n.* [BAYLU]

§ *Sisyrinchium chilense* Hook., *J. Johnson 45* [BAYLU]

Sisyrinchium langloisii Greene, *C.L. York 46022* [TEX]

Sisyrinchium minus Engelm. & A. Gray, *L.D. Smith 1099* [TEX]

§ *Sisyrinchium pruinosum* E.P. Bicknell, *L.D. Smith 430* [BAYLU]

JUNCACEAE

§ *Juncus interior* Wiegand, *W.C. Holmes 13255* [BAYLU]

Juncus marginatus Rostk., *L.D. Smith 661* [TEX]

§ *Juncus tenuis* Willd., *L.D. Smith s.n.* [BAYLU]

τ *Juncus texanus* (Engelm.) Coville, *C.L. York 46088* [TEX]

Juncus torreyi Coville, *W.C. Holmes 13256* [BAYLU]

LEMNACEAE

§ *Lemna minor* L., *S.A. Conry 3* [BAYLU]

§ *Lemna minuta* Kunth, *W.C. Holmes 13116* [BAYLU]

Spirodela polyrrhiza (L.) Schleid., *J.R. Massey 351* [LL]

Wolffia brasiliensis Wedd., *J.R. Massey 359* [LL]

§ *Wolffia columbiana* H. Karst., *W.C. Holmes 13117* [BAYLU]

LILIACEAE

Erythronium albidum Nutt., *W.C. Holmes 4994* [BAYLU]

MELANTHIACEAE

Zigadenus nuttallii (A. Gray) S. Wats., *L.D. Smith 475* [TEX]

NAJADACEAE

Najas guadalupensis (Spreng.) Magnus, *J.R. Massey 725* [TEX]

ORCHIDACEAE

Corallorrhiza wisteriana Conrad, *F.R. Gehlbach s.n.* [LL]

§ *Spiranthes lacera* (Raf.) Raf., *W.C. Holmes 11186* & *F. Gehlbach* [BAYLU]

§ *Spiranthes magnicamporum* Sheviak, *W.C. Holmes 11187* & *F. Gehlbach* [BAYLU]

POACEAE

Aegilops cylindrica Host, [cited in Shaw et al. 2011]

Alopecurus carolinianus Walter, *L.D. Smith 516* [BAYLU, TEX]

§ *Andropogon gerardii* Vitman, *W.C. Holmes 7899* [BAYLU]

Andropogon glomeratus (Walter) Britton, Sterns & Poggenb., [cited in Shaw et al. 2011]

Aristida oligantha Michx., *W.C. Holmes 5437* [BAYLU, TEX]

§ *Aristida purpurascens* Poir., *L.D. Smith 934* [BAYLU]

Aristida purpurea Nutt., *L.D. Smith 52* [TEX]

- Aristida purpurea* Nutt. var. *nealleyi* (Vasey) Allred, *L.D. Smith* 745 [TEX]
Aristida purpurea Nutt. var. *wrightii* (Nash) Allred, *L.D. Smith* 549 [BAYLU]
- *†§ *Arundo donax* L., *M.J. McCall* 14 [BAYLU]
- *§ *Avena fatua* L., *G.R. McCown* 16 [BAYLU]
- *§ *Avena sativa* L., *Y. Ghent s.n.* [BAYLU]
- § *Bothriochloa barbinodis* (Lag.) Herter, *L.D. Smith* 306 [TEX]
- * *Bothriochloa ischaemum* (L.) Keng, *L.H. Shinnars* 30555 [TEX]
Bothriochloa laguroides (DC.) Herter., *L.D. Smith* 582 [TEX]
Bothriochloa saccharoides (Sw.) Rydb., *A.M. Gordon s.n.* [BAYLU]
Bouteloua curtipendula (Michx.) Torr. var. *curtipendula* *L.D. Smith* 155 [TEX]
Bouteloua hirsuta Lag., *L.D. Smith* 945 [TEX]
Bouteloua rigidiseta (Steud.) Hitchc., *W.C. Holmes* 5035 [BAYLU]
Brachiaria fasciculata (Sw.) Parodi, *L.D. Smith* 288 [TEX]
Brachiaria texana (Buckl.) S.T. Blake, *LD. Smith* 331 [TEX]
- *§ *Briza minor* L., *W.C. Holmes* 13254 [BAYLU]
- * *Bromus catharticus* Vahl., *L.D. Smith* 713 [TEX]
Bromus hordeaceus L., [cited in Shaw et al. 2011]
- * *Bromus japonicus* Thunb., *W.C. Holmes* 11280 [BAYLU]
- * *Bromus secalinus* L., *L.D. Smith* 710 [TEX]
Bromus pubescens Muhl. Ex Willd., [cited in Shaw et al. 2011]
Bromus tectorum L., [cited in Shaw et al. 2011]
Buchloe dactyloides (Nutt.) Engelm., *W.C. Holmes* 6226 [BAYLU, TEX]
Cenchrus longispinus (Hack.) Fernald, *L.D. Smith* 966 [TEX]
- § *Cenchrus spinifex* Cav., *L.D. Smith* 304 [BAYLU, TEX]
Chasmanthium latifolium (Michx.) H.O. Yates, *L.D. Smith* 181 [BAYLU, TEX]
Chloris subdolichostachya Müll.Hal., *L.D. Smith* 755 [BAYLU]
Chloris verticillata Nutt., *P. Siems* 26 [TEX]
Chloris virgata Sw., [cited in Shaw et al. 2011]
Coelorachis cylindrica (Michx.) Nash, *L.D. Smith* 951 [BAYLU, TEX]
- *§ *Cynodon dactylon* (L.) Pers., *A.M. Gordon s.n.* [BAYLU]
Digitaria ciliaris (Retz.) Koeler, *C.L. York & L.D. Smith* 138 [TEX]
- § *Digitaria sanguinalis* (L.) Scop., *L.D. Smith* 820 [BAYLU]
Digitaria californica (Benth.) Henrard, [cited in Shaw et al. 2011]
Digitaria cognata (J.A. Schultes) Pilger., [cited in Shaw et al. 2011]
Digitaria pubiflora (Vasey) J. Wipff., [cited in Shaw et al. 2011]
- * *Echinochloa colona* (L.) Link, *L.D. Smith* 794 [TEX]
Echinochloa crus-galli (L.) P. Beauv., *L.D. Smith* 279 [TEX]
- § *Echinochloa walteri* (Pursh) A. Heller, *M.P. Mauldin s.n.* [BAYLU]
- * *Eleusine indica* (L.) Gaertn., *L.D. Smith* 289 [TEX]
Elymus canadensis L., *L.D. Smith* 743 [TEX]
Elymus virginicus L., *L.D. Smith* 685 [BAYLU, TEX]
- * *Eragrostis barrelieri* Daveau, *L.D. Smith* 768 [TEX]
- * *Eragrostis cilianensis* (All.) Vignalo ex Janch., *L.D. Smith* 328 [TEX]
Eragrostis curtipedicellata Buckley, *L.D. Smith* 711 [BAYLU, TEX]
Eragrostis curvula (Schrud.) Nees, [cited in Shaw et al. 2011]
Eragrostis pectinacea (Michx.) Nees ex Steud., *L.D. Smith* 310 [BAYLU]
Eragrostis pectinacea (Michx.) Nees ex Steud. var. *miserrima* (E. Fourn.) Reeder, *C.L. York & L.D. Smith* 122 [BAYLU]
Eragrostis pilosa (L.) P. Beauv., [cited in Shaw et al. 2011]
Eragrostis secundiflora J. Presl. ssp. *oxylepis* (Torr.) S.D. Koch, *L.D. Smith* 746 [TEX]
Eragrostis sessilispica Buckley, *L.D. Smith* 942 [BAYLU, TEX]

- Eriochloa contracta* Hitchc., *L.D. Smith* 795 [BAYLU, TEX]
Erioneuron pilosum (Buckley) Nash, *L.D. Smith* 539 [TEX]
* *Eustachys retusa* (Lag.) Kunth, *L.D. Smith* 83 [TEX]
Hordeum pusillum Nutt., *L.D. Smith* 1111 [BAYLU, TEX]
Leptochloa panicea (Retz.) Ohwi ssp. *mucronata* (Michx.) Nowack, *L.D. Smith* 236 [TEX]
Limnodea arkansana (Nutt.) L.H. Dewey, *L.D. Smith* 1114 [BAYLU, TEX]
Lolium multiflorum Lamarck, [cited in Shaw et al. 2011]
* *Lolium perenne* L., *L.D. Smith* 812 [TEX]
* *Lolium temulentum* L., *L.D. Smith* 1115 [BAYLU, TEX]
§ *Muhlenbergia reverchonii* Vasey & Scribn., *W.C. Holmes* 4939 [BAYLU]
Muhlenbergia bushii R.W. Pohl, [cited in Shaw et al. 2011]
Nassella leucotricha (Trin. & Rupr.) R.W. Pohl, *L.D. Smith* 531 [BAYLU]
Panicum acuminatum Sw., *L.D. Smith* 234 [TEX]
Panicum acuminatum Desv. ex Poir. var. *lindheimeri* (Nash) Lelong, *W.C. Holmes* 5264 [BAYLU]
Panicum antidotale Retz., [cited in Shaw et al. 2011]
Panicum capillare L., *L.D. Smith* 383 [BAYLU, TEX]
Panicum coloratum L., [cited in Shaw et al. 2011]
Panicum dichotomiflorum Michx., *L.D. Smith* 827 [BAYLU, TEX]
Panicum fasciculatum Sw., *L.D. Smith* 288 [BAYLU]
Panicum geminatum Forssk., *L.D. Smith* 924 [BAYLU]
Panicum hallii Vasey, [cited in Shaw et al. 2011]
§ *Panicum malacophyllum* Nash, *L.D. Smith* 6 [BAYLU]
Panicum obtusum Kunth, *L.D. Smith* 746 [TEX]
§ *Panicum oligosanthos* Schult., *W.C. Holmes* 13253 [BAYLU]
Panicum pedicellatum Vasey, [cited in Shaw et al. 2011]
Panicum rigidulum Bosc ex Nees, *L.D. Smith* 918 [TEX]
§ *Panicum sphaerocarpon* Elliot, *W.C. Holmes* 13252 [BAYLU]
Panicum virgatum L., *W.C. Holmes* 6230 [BAYLU]
Paspalidium geminatum (Forssk.) Stapf, *V.C. Hannick* 232 [BAYLU]
* *Paspalum dilatatum* Poir., *L.D. Smith* 302 [TEX]
Paspalum distichum L., *L.D. Smith* 960 [TEX]
Paspalum floridanum Michx., [cited in Shaw et al. 2011]
Paspalum plicatum Michx., [cited in Shaw et al. 2011]
Paspalum pubiflorum Rupr. ex E. Fourn., *L.D. Smith* 977 [TEX]
Paspalum setaceum Michx., *L.D. Smith* 858 [TEX]
* *Paspalum urvillei* Steud., *L.D. Smith* 920 [BAYLU, TEX]
Pennisetum ciliare (L.) Link, [cited in Shaw et al. 2011]
*§ *Phalaris canariensis* L., *L.D. Smith* 492 [BAYLU]
Phalaris caroliniana Walter, *J.R. Massey* 1985 [TEX]
§ *Phragmites australis* (Cav.) Trin. ex Steud., *Z.E. Walker* 31 [BAYLU]
* *Phyllostachys aurea* Carrière ex Rivière & C. Rivière, *W.C. Holmes* 7593 [BAYLU, TEX]
Piptochaetium avenaceum (L.) Parodi, *P. Sarjeant* s.n. [BAYLU]
* *Poa annua* L., *L.D. Smith* 383 [TEX]
Poa arachnifera Torr., *W.C. Holmes* 5651 [BAYLU, TEX]
* *Polypogon monspeliensis* (L.) Desf., *L.D. Smith* 823 [BAYLU, TEX]
§ *Saccharum baldwinii* Spreng., *Y. Ghent* s.n. [BAYLU]
§ *Saccharum giganteum* (Walter) Pers., *W.C. Holmes* 12535, *J. Singhurst & K. Fleming* [BAYLU]
Schizachyrium scoparium (Michx.) Nash var. *scoparium*, *L.D. Smith* 207 [BAYLU, TEX]
* *Secale cereale* L., *C. Craft* s.n. [BAYLU]

- *§ *Setaria italica* (L.) P. Beauv., *L.D. Smith* 880 [BAYLU]
- *§ *Setaria macrostachya* Kunth, *L.D. Smith s.n.* [BAYLU]
- Setaria parviflora* (Poir.) Kerguelén, *L.D. Smith* 817 [TEX]
- *§ *Setaria pumila* (Poir.) Roem. & Schult., *W.C. Holmes* 6560 [BAYLU]
- Setaria reverchonii* (Vasey) Pilg., *L.D. Smith* 498 [BAYLU]
- Setaria scheelei* (Steud.) Hitchc., *L.D. Smith* 204 [TEX]
- * *Setaria viridis* (L.) P. Beauv., *L.D. Smith* 775 [BAYLU, TEX]
- § *Sorghastrum nutans* (L.) Nash, *W.C. Holmes & J.N. Mink* 15303 [BAYLU]
- * *Sorghum halepense* (L.) Pers., *L.D. Smith* 789 [TEX]
- Sporobolus compositus* (Poir.) Merr., *F.W. Gould* 10273 [TEX]
- Sporobolus pyramidatus* (Lam.) Hitchc., *W.C. Holmes* 15594 [BAYLU]
- Tridens albescens* (Vasey) Wooton & Standl., *L.D. Smith* 808 [TEX]
- Tridens congestus* (L.H. Dewey) Nash, [cited in Shaw et al. 2011]
- § *Tridens flavus* (L.) Hitchc., *W.C. Holmes* 111 [BAYLU]
- § *Tridens muticus* (Torr.) Nash, *L.D. Smith* 1011 [BAYLU]
- Tridens strictus* (Nutt.) Nash, [cited in Shaw et al. 2011]
- Tripsacum dactyloides* (L.) L., *L.D. Smith* 684 [BAYLU, TEX]
- Trisetum interruptum* Buckley, *L. Michel s.n.* [BAYLU].
- * *Triticum aestivum* L., *B.E. Winn* 80 [BAYLU]
- Urochloa ciliatissima* (Buckley) R.D. Webster, [cited in Shaw et al. 2011]
- Urochloa fusca* (Sw.) B.F. Hansen & Wunderlin, *L.D. Smith* 288 [BAYLU]
- Vulpia octoflora* (Walter) Rydb., *L.D. Smith* 433 [BAYLU, TEX]
- Zizaniopsis miliacea* (Michx.) Döll & Asch., *L.D. Smith* 781 [BAYLU, TEX]

PONTEDERIACEAE

- *† *Eichhornia crassipes* (Mar.) Solms, *C.L. York & L.D. Smith* 136 [BAYLU, TEX]
- § *Heteranthera dubia* (Jacq.) MacMill., *E. Haskell s.n.* [BAYLU]
- Heteranthera limosa* (Sw.) Willd., *L.D. Smith* 630 [BAYLU, TEX]
- § *Pontederia cordata* L., *S.A. Conry* 16 [BAYLU]

POTAMOGETONACEAE

- Potamogeton diversifolius* Raf., *L.D. Smith* 639 [TEX]
- Potamogeton nodosus* Poir., *L.D. Smith* 192 [TEX]

SMILACACEAE

- Smilax bona-nox* L., *W.C. Holmes* 5247 [BAYLU, TEX]
- § *Smilax rotundifolia* L., *E.L. Hamby s.n.* [BAYLU]
- *§ *Smilax smallii* Morong, *W.C. Holmes* 15928 [BAYLU]
- Smilax tamnoides* L., *W.C. Holmes* 6437 [BAYLU]

THEMIDACEAE

- § *Androstephium coeruleum* (Sheele) Greene, *E.L. Hamby s.n.* [BAYLU]

TYPHACEAE

- Typha domingensis* Pers., *C.L. York* 46236 [TEX]
- § *Typha latifolia* L., *W.C. Holmes* 6210 [BAYLU]

ZANNICHELLIACEAE

- Zannichellia palustris* L., *J.R. Massey* 613 [LL]

ACKNOWLEDGEMENTS

The authors thank Tom Wendt, Curator of the herbarium at the University of Texas, Austin (TEX, LL), for supplying data on various specimens. Barney Lipscomb, Botanical Research Institute of Texas, supplied a copy of the Plank (1892) paper, which ultimately led to this investigation. The BRIT herbarium was also consulted.

This manuscript is based upon a thesis written by the senior author and submitted to the faculty of the Department of Biology, Baylor University, in partial fulfillment for the degree of Master of Science. The thesis was directed by Walter C. Holmes. Committee members and readers were Don F. Parker, Department of Geology, and Darrell Vodopich, Department of Biology, both of Baylor University.

LITERATURE CITED

- Adkins, W.S. 1923. Geology and mineral resources of McLennan County. Univ. of Texas Bulletin 2340: 183–197.
- Arrhenius, O. 1921. Species and area. J. Ecol. 9: 95–99.
- Carr, W.H. 1994. A botanical inventory of blackland prairie openings within the Sam Houston National Forest. Report to the U.S. Forest Service, Lufkin, Texas. Texas Natural Heritage Program, Austin.
- Correll, D.S. and M.C. Johnston. 1970. Manual of the Vascular Plants of Texas. Texas Research Foundation, Renner.
- Diamond, D.D. and F.E. Smeins. 1993. The native plant communities of blackland prairie. Pp. 66–81, in M.R. Sharpless and J.C. Yelderman (eds.). The Texas Blackland Prairie, Land, History, and Culture. Baylor Univ. Program for Regional Studies, Waco, Texas. .
- Diggs, G.M., Jr., B.L. Lipscomb and R.J. O’Kennon. 1999. Shinnery & Mahler’s Illustrated Flora of North Central Texas. Sida, Bot. Misc., 16. Botanical Research Institute of Texas, Fort Worth.
- Environmental Systems Research Institute. 2002. ArcMAP Version 9.2, Redlands, California.
- Flora of Texas Database. 2008. Plant Resources Center, Univ. of Texas, Austin. (<http://www.utexas.edu/pre/Tex.html>).
- Flora of Texas Consortium. 1996. Vascular plants endemic to Texas. <http://www.csd.tamu.edu/FLORA/endemics/endemic1.htm> [20 February 2008].
- Gould, F.W. 1962. Texas plants. A checklist and ecological summary. Texas Agricultural Experiment Station pub. MP585, College Station, Texas.
- Handbook of Texas Online. 2008. <http://www.tshaonline.org/handbook/online/articles/MM/hcm8.html> [24 February 2008]
- Hannick, V.C. 2008. An annotated checklist of the vascular flora of McLennan County, Texas. Unpub. M.S. thesis, Department of Biology, Baylor University, Waco, Texas.
- Hatch, S.L., K.N. Ghandi and L.E. Brown. 1990. Checklist of the Vascular Plants of Texas. Texas Agricultural Experiment Station pub MP1655, College Station.
- Holmes, W.C., J.R. Singhurst, and J.N. Mink. 2011. A commentary on *Cheilanthes lanosa* (Pteridaceae) in Texas. Phytoneuron 2011-34. 1–5.
- Miller, G.B. and J.M. Greenwade. 2001. Soil Survey of McLennan County, Texas. Natural Resources Conservation Service, United States Department of Agriculture. http://soils.usda.gov/survey/online_surveys/texas/ [20 August 2008].
- Mink, J.N., J.R. Singhurst and W.C. Holmes. 2011. Remarks on *Equisetum arvense* (Equisetaceae) in Texas. Phytoneuron 2011-21: 1–3.
- Neill, A.K. and H.D. Wilson. 2001. The vascular flora of Madison County, Texas. Sida 19:1083–1121.
- Nesom, G.L. and L.E. Brown. 1998. Annotated checklist of the vascular plants of Walker, Montgomery, and San Jacinto counties, east Texas. Phytologia 84:107–153.

- Pace, L. 1923. McLennan County plants. Pp. 183–197, *in* W.S. Adkins. Geology and Mineral Resources of McLennan County. University of Texas Bulletin 2340.
- Plank, E.N. 1892. Botanical notes from Texas. Garden and Forest 290: 579–580.
- Peterson, C.D. and L.E. Brown. 1983. Vascular flora of the Little Thicket Nature Sanctuary, San Jacinto County, Texas. Brunswick Press, Inc., Houston, Texas.
- Pyšek, P.D., M. Richardson, M. Rejmánek, G.L. Webster, M. Williamson and J. Kirschner. 2004. Alien plants in checklists and floras: towards better communication between taxonomists and ecologists. Taxon, 53: 131–143.
- Shaw, R.B., B.S. Rector and A.M. Dube. 2011. Distribution of grasses in Texas. Sida, Bot. Misc. 33. Bot. Res. Inst. of Texas, Fort Worth.
- Singhurst, J.R. 1998. Huntsville State Park – preliminary checklist of vascular plants. Unpublished report, Texas Parks and Wildlife Department, Austin.
- Singhurst, J.R., L.L. Hansen, J.N. Mink, B. Armstrong, D. Frels, Jr., and W.C. Holmes. 2010. The vascular flora of the Kerr Wildlife Management Area, Kerr County, Texas. J. Bot. Res. Inst. Texas 4: 497–521.
- Templin, E.H., A.L. Nabors, T.R. Atkins, A.W. Crain, I.C. Mowery, D.T. Horton, and J.S. Williams. 1958. Soil survey of McLennan County, Texas. United States Department of Agriculture, Series 1942, No. 17.
- Thomas, R.D. and C. M. Allen. 1996. Atlas of the vascular flora of Louisiana, Vol. II: Dicotyledons, Acanthaceae – Euphorbiaceae. Louisiana Department of Wildlife & Fisheries, Baton Rouge.
- Turner, B.L., H. Nichols, G. Denny and O. Doron. 2003. Atlas of the Vascular Plants of Texas, Vols. 1 and 2. Sida, Bot. Misc. 24. Botanical Research Institute of Texas, Fort Worth.
- United States Census Bureau. 2012. State and county quickfacts [sic] data. (<http://quickfacts.census.gov/qfd/states/48/48309.html>.)
- USDA, NRCS. 2008. The PLANTS Database. <http://plants.usda.gov> National Plant Data Center, Baton Rouge, Louisiana, USA. [18 July 2008].
- Zimmerman, T. (compiler & editor). 1977. A checklist of native and naturalized plants of Walker County [Texas] as related to soil types. Based on field notes by S.R. Warner (1921–1924). Unpublished manuscript.