

**DISTRIBUTION RECORDS FOR *ERYTHRANTHE* (PHRYMACEAE)
IN WYOMING, MONTANA, AND UTAH**

GUY L. NESOM

Research Associate

Academy of Natural Sciences of Drexel University

Philadelphia, Pennsylvania 19103

guynesom@sbcglobal.net

ABSTRACT

The presence of *Erythranthe tilingii* in Wyoming is documented here for the first time. It has been collected in the southwestern Absaroka Range at closely adjacent localities in Park and Teton counties. Additional records for *E. arvensis* in Montana and Wyoming, at the eastern periphery of its range, are provided. New records for *E. microphylla* and *E. nasuta* in Utah are documented and mapped.

Erythranthe tilingii (Regel) Nesom occurs widely through the western USA at relatively high elevations (Nesom 2012, 2013). Floristic collections by Neil Snow (Snow 1989; Snow et al. 1990) in the southwestern Absaroka Range extend its range to the northeast and into the state of Wyoming (Fig. 2).

Wyoming. Park Co.: Southwestern Absarokas, ca. 45 air mi SW of Cody, along North Fork Butte Creek, W of Thorofare Buttes, T48N R108W S8,9, streamside, 8900 ft, 30 Jul 1988, *Snow 4206* (RM, Fig. 3). **Teton Co.:** Southwestern Absarokas, ca. 16 air mi NE of Moran, ca. 10 air mi N of Enos Lake, T48N, R112W S11, along creek, 8200 ft, 7 Aug 1987, *Snow 1831* (RM, Fig. 1).



Figure 1. *Erythranthe tilingii* from Teton Co., Wyoming, *Snow 1831*.



Figure 3. *Erythranthe tilingii* from Park Co., Wyoming, *Snow 4206*.

Erythranthe arvensis (Greene) Nesom is an annual with small, cleistogamous flowers. Occurrences in Montana and Wyoming are at the northeastern extremity of its range.

Montana. Lewis & Clark Co.: Vic. of Helena, [no date], *Kelsey s.n.* (PH). Meagher Co.: Lewis & Clark Natl Forest, Castle Mtns, Forest Rd 8905, between Cooper and Whetstone creeks, ca. 1/4 mi W of jct with Forest Rd 694, occasional wet depressions in *Pinus ponderosa* woodland, 1602 m, 23 Jun 2009, *McNeill 5074* (RM). **Wyoming.** Fremont Co.: Wind River Range, Fitzpatrick Wilderness Area, Shoshone Natl Forest, ca. 7.5 air mi SSE of Dubois, pack trail leading to Bomber Basin, spruce/fir/pine forest with granitic rocky outcrop, 7800-8600 ft, 28 Jul 1997, *Rosenthal 3094* (RM). Lincoln Co.: supporting data misplaced. Sublette Co.: Gros Ventre area, ca. 6 air mi SE of Bondurant, Fisherman Lake Creek Rd, 0.7 air mi NE of US Hwy 191, gravel pile area, 6800 ft, 16 Jul 1995, *Hartman 52244* (RM).

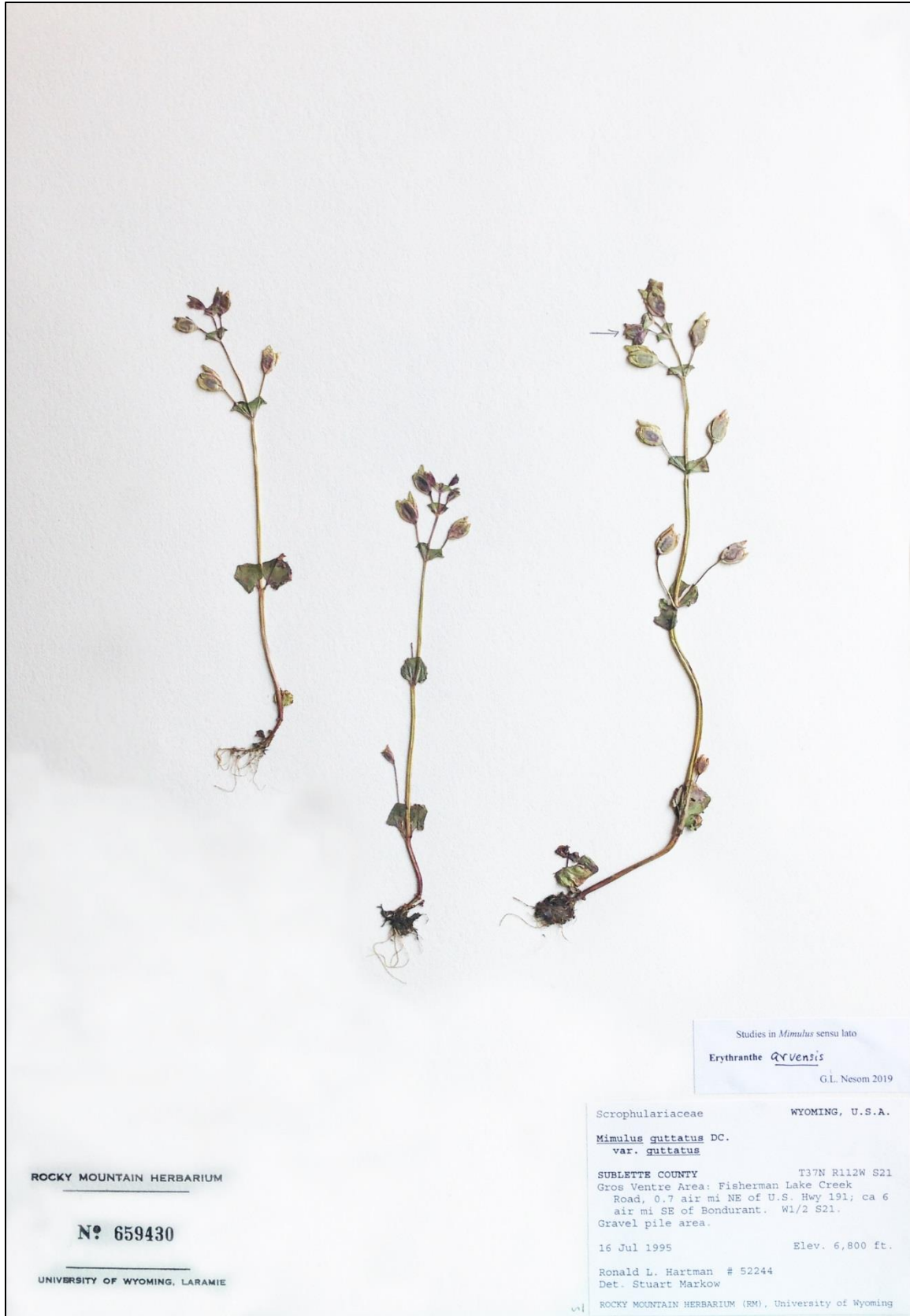


Figure 4. *Erythranthe arvensis* from Sublette Co., Wyoming, Hartman 52244.

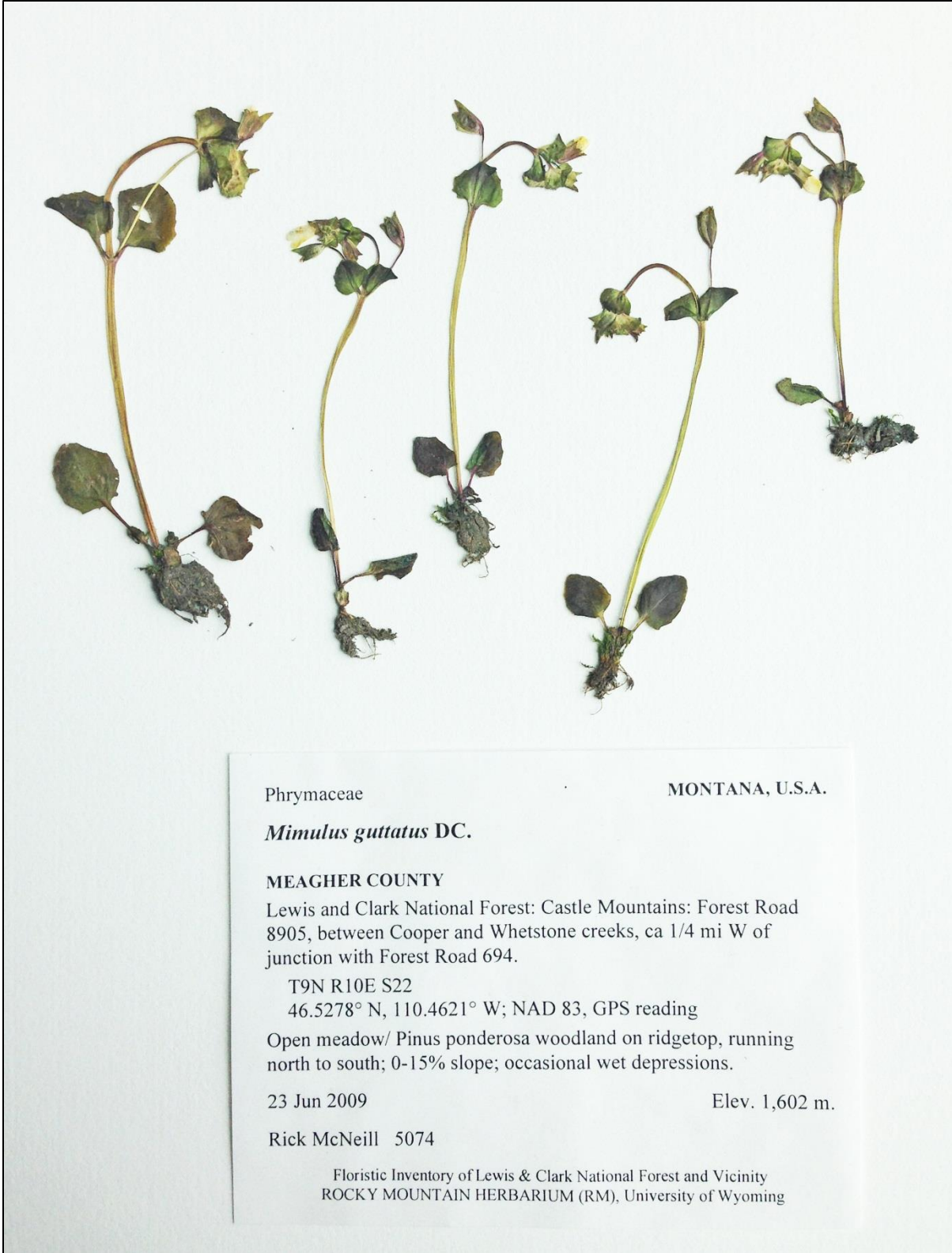


Figure 5. *Erythranthe arvensis* from Meagher Co., Montana, McNeill 5074.

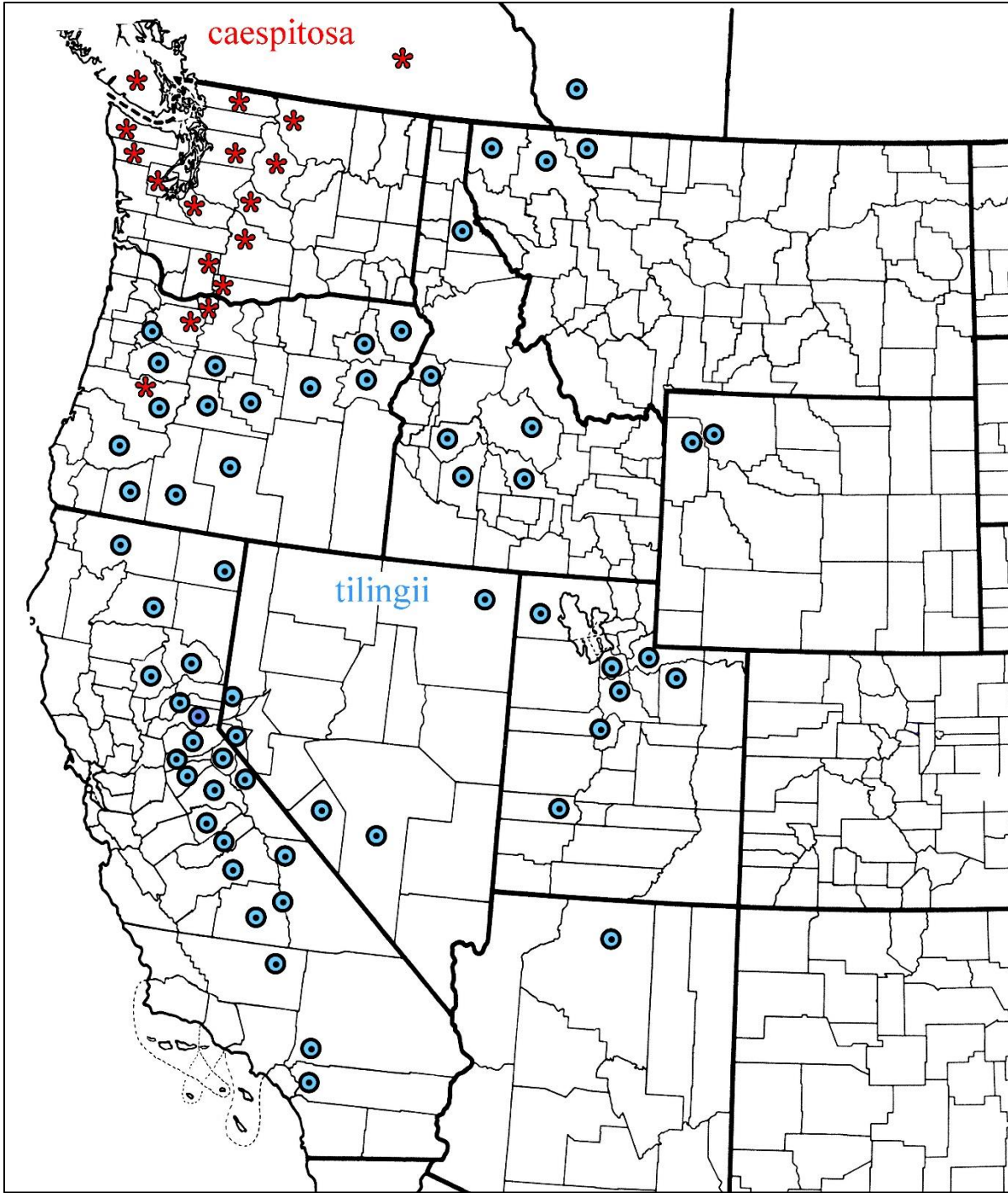


Figure 6. Distribution of *Erythranthe tilingii* and the closely related *E. caespitosa*. New records for *E. tilingii* in Wyoming are documented here.

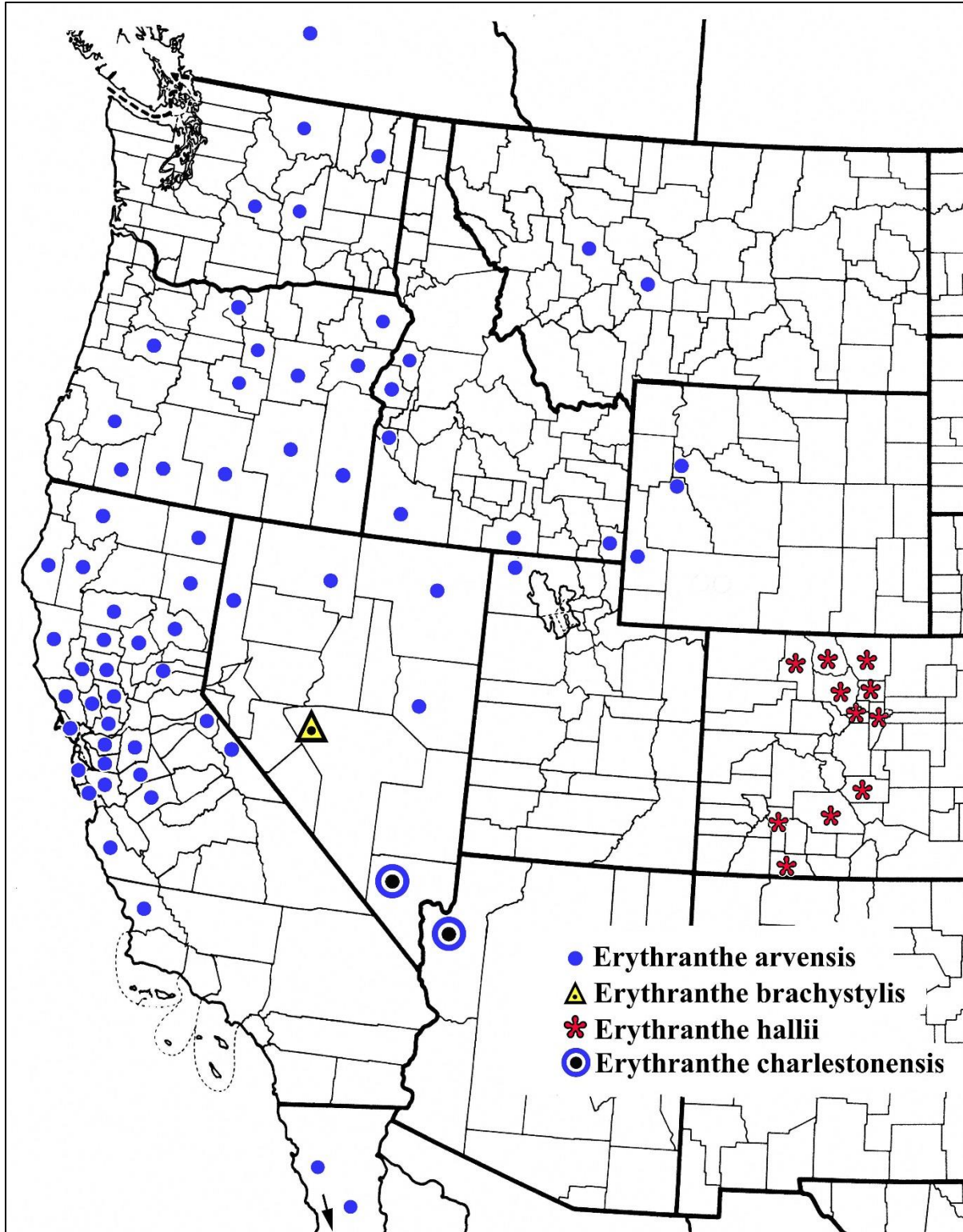


Figure 7. Distribution of *Erythranthe arvensis* and closely related species. Additional records for Montana and Wyoming are provided here.

Erythranthe microphylla* and *E. nasuta

Both of these species are wide-ranging. New records extend or confirm their occurrence in Utah.

Erythranthe microphylla. **Utah.** Cache Co.: near Tony Grove Lake, upper drainage in cirque area, streambank, 8200 ft, 18 Jul 1975, *Beedlow s.n.* (UTC image); turnoff to Tony Lake 4.1 mi from main road, rich wet soil very near stream, 9 Jul 1972, *Drake 104* (UTC image); Bear River Range, Tony Grove Lake, N end of lake in moist flats in the draw-down area exposed for at least 2 years during repairs to the dam, 8050 ft, common in moist soil, 27 Jul 2006, *Holmgren 15450* (UTC image).

Erythranthe nasuta. **Utah.** Box Elder Co.: Raft River Mts, head of Middle Fork, Dunn Canyon, most loam soil in rocks, 9000 ft, 31 Jul 1943, *Holmgren & Maguire 22196* (UTC image).

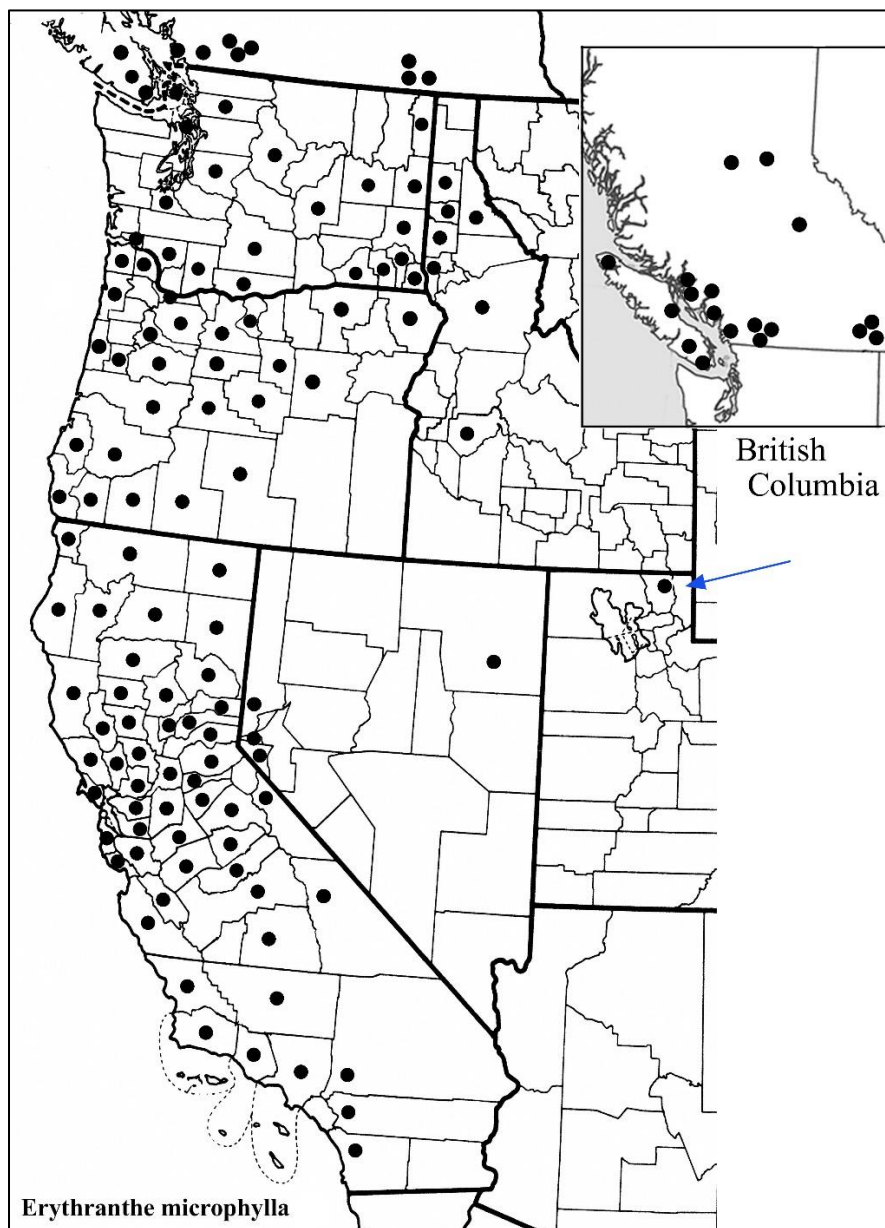


Figure 8. Distribution of *Erythranthe microphylla*. New record for Utah (Cache Co.) is documented in the text.

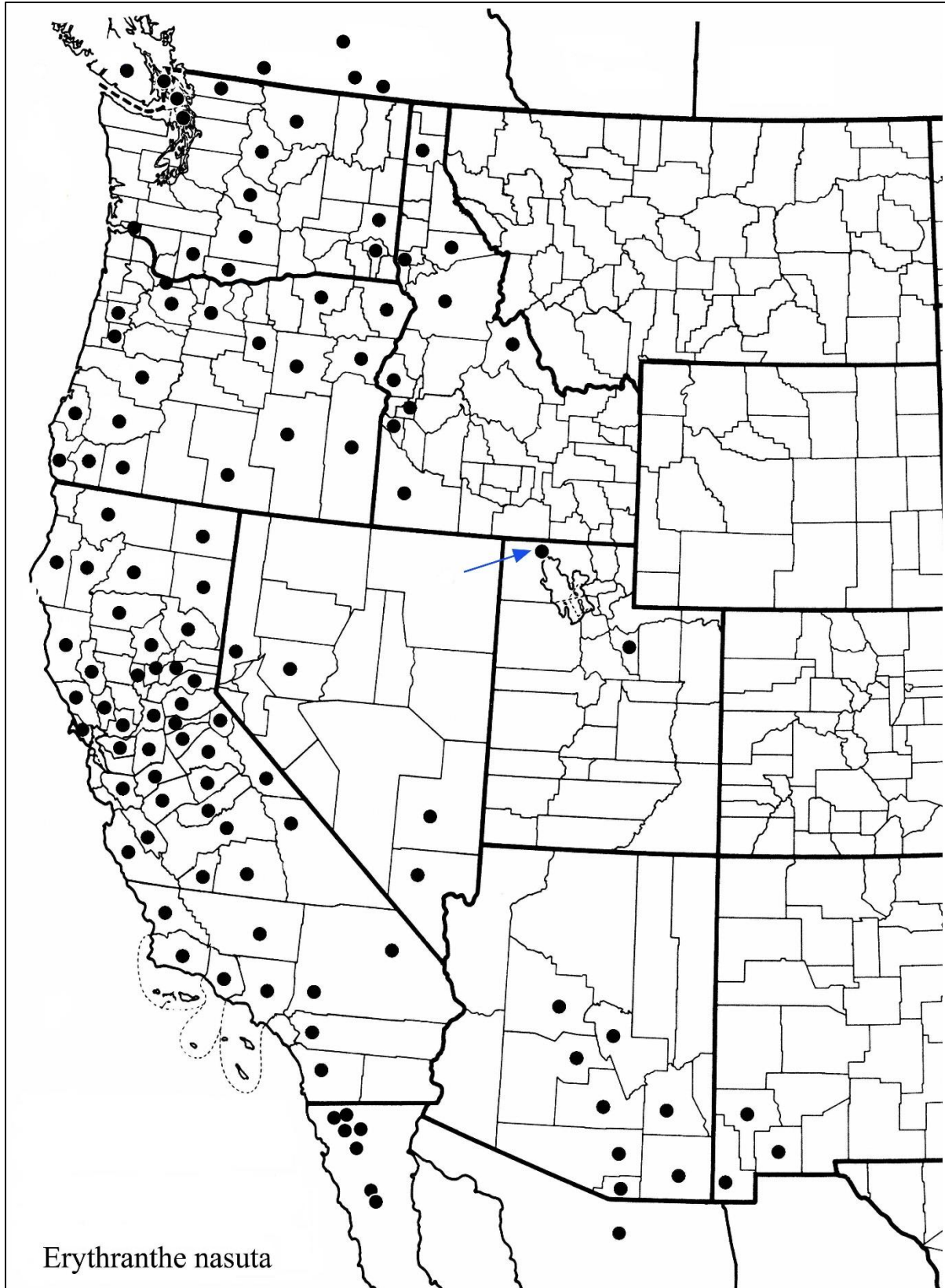


Figure 8. Distribution of *Erythranthe nasuta*. New record for Box Elder Co., Utah, is documented in the text.

ACKNOWLEDGEMENTS

I am grateful to the staff at RM for their hospitality during study there and for a loan of RM specimens to BRIT.

LITERATURE CITED

- Nesom, G.L. 2012. Taxonomy of *Erythranthe* sect. *Simiola* (Phrymaceae) in the USA and Mexico. *Phytoneuron* 2012-40: 1–123.
- Nesom, G.L. 2013. New distribution records for *Erythranthe* (Phrymaceae). *Phytoneuron* 2013-67: 1–15.
- Snow, N. 1989. Floristics of the headwaters region of the Yellowstone River [Wyoming]. M.S. thesis, Univ. of Wyoming, Laramie.
- Snow, N., B.E. Nelson, and R.L. Hartman. 1990. Additions to the vascular flora of Yellowstone National Park, Wyoming. *Madrono* 37: 214–216.