

NOTES ON MEXICAN *ERYTHRANTHE* (PHRYMACEAE)

GUY L. NESOM

Research Associate

Academy of Natural Sciences of Drexel University

Philadelphia, Pennsylvania 19103

guynesom@sbcglobal.net

ABSTRACT

New state distribution records are documented for *Erythranthe dentiloba* (Jalisco) and *E. flammea* (Jalisco) and a large-scale distribution map is presented for the narrowly endemic *E. visibilis* (north-central Michoacan).

Erythranthe flammea

A collection shown by UNAM (2021) extends the range of *Erythranthe flammea* Nesom to the state of Jalisco (Fig. 1). The protologue (Nesom 2014) showed the species only in Durango and Nayarit.

Jalisco. Mpio. Bolanos: Camino al Cerro del Gallo, Predio "las Berenjenas" as 10 km al NO de Bolanos, bosque de pino-encino, 5 May 2003, *D. Elva 101* (MEXU image).

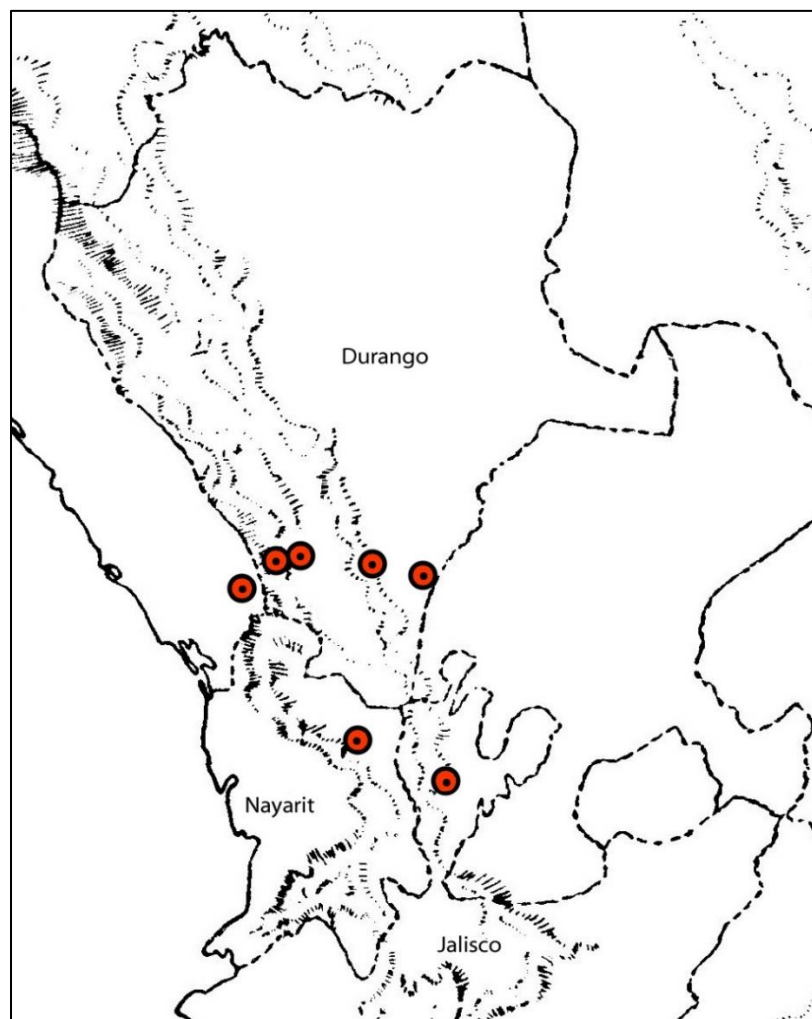


Figure 1. Distribution of *Erythranthe flammea*.

Erythranthe visibilis

Recent collections of *Erythranthe visibilis* Nesom from northeastern Michoacán by Zamudio and associates (Pérez-Calix & Zamudio 2011, as *Mimulus minimus*; see Nesom 2013) as well as others (UNAM 2021, cited below) provide a more complete picture of its geography (Fig. 2) and morphology. Stems of *M. minimus* were described as sometimes erect but the plant collected by H. Vibrans (*Vibrans 6900*, Fig. 3) has prostrate stems rooting at the nodes, confirming the protologue description of *E. visibilis* (Nesom 2012).

Known collections. Michoacán. Mpio. Cd. Hidalgo: Mil Cumbres, a 2.8 km al E de Mil Cumbres, cerca de la carretera, veg. mesófilo, 2500 m, 14 Nov 1983, *Ramamoorthy 4516* (MEXU image). **Mpio. Morelia:** 29 km al E de Morelia, en El Salto [Cascada El Salto], bosque mesófilo de montaña, 2200 m, en ladera húmeda cubierta de musgo, 23 Apr 1984, *Silva R. y Reynaga 6344* (MEXU image); just E of Morelia along highway (KM 212.3), dense patch on vertical, mossy, dripping bank, 23 Aug 1976, *Wonderly 347* (MEXU image, NMC). **Mpio. Queréndaro:** 1 km S de San Miguel de las Cuevas, *Zamudio et al. 14705* (IEB); 1 km S de San Miguel de las Cuevas, 19° 43' 45" N, 100° 50' 00" W, talud con escurrimientos temporales de agua, bosque de *Pinus-Quercus-Cupressus*, 2350 m, 28 Jan 2010, *Zamudio et al. 14713* (EBUM, ENCB, IEB, MEXU, type of *Mimulus minimus*); 1.7 km S de San Miguel de las Cuevas, 2400 m, *Zamudio et al. 14724* (IEB); 2 km S de San Miguel de las Cuevas, 2380 m, *Zamudio et al. 14732* (IEB). **Mpio. Tuzantla:** Vicinity of Morelia, Cerros San Miguel, 2200 m, Dec 1910, *Arsene 5310* (MO, holotype of *E. visibilis*). **Mpio. Tzitzio:** carretera "Mil Cumbres" a Morelia, cerca de "Los Cantiles," 19° 39' 18.2" N, 100° 55' 44.2" W, veg. ruderal en rincón húmedo sombreado por *Ficus* con agua goteando, sobre las rocas, frecuentes, 2279 m, 8 Nov 2000, *Vibrans 6900* (MEXU image, Fig. 3).

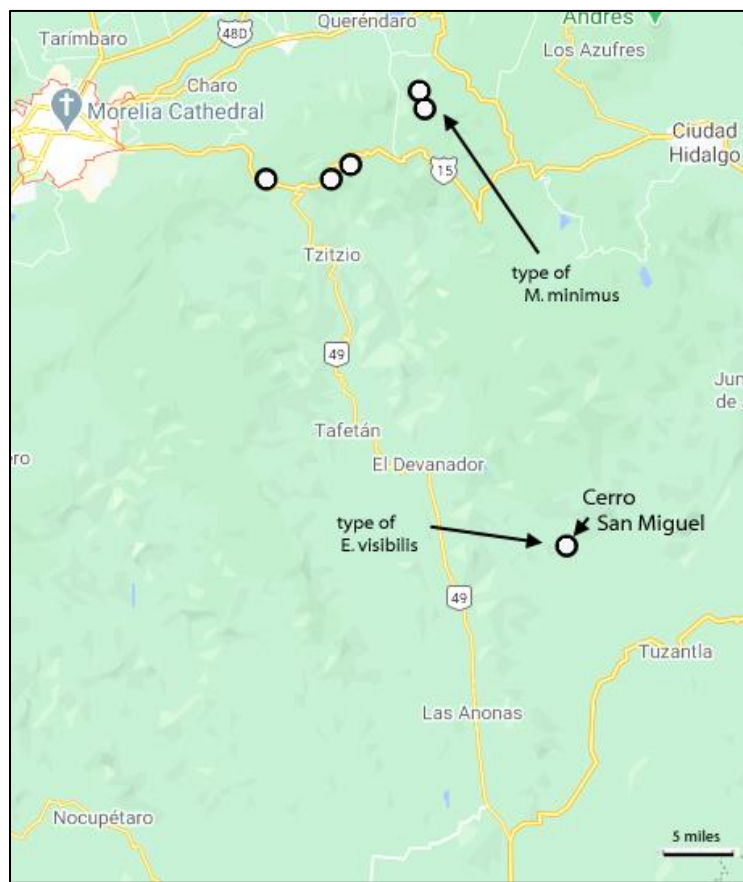


Figure 2. Localities for *Erythranthe visibilis*, Michoacán, Mexico. The type locality is about 40 miles southeast of Morelia — Arsene apparently made the collection during the time he was teaching there.

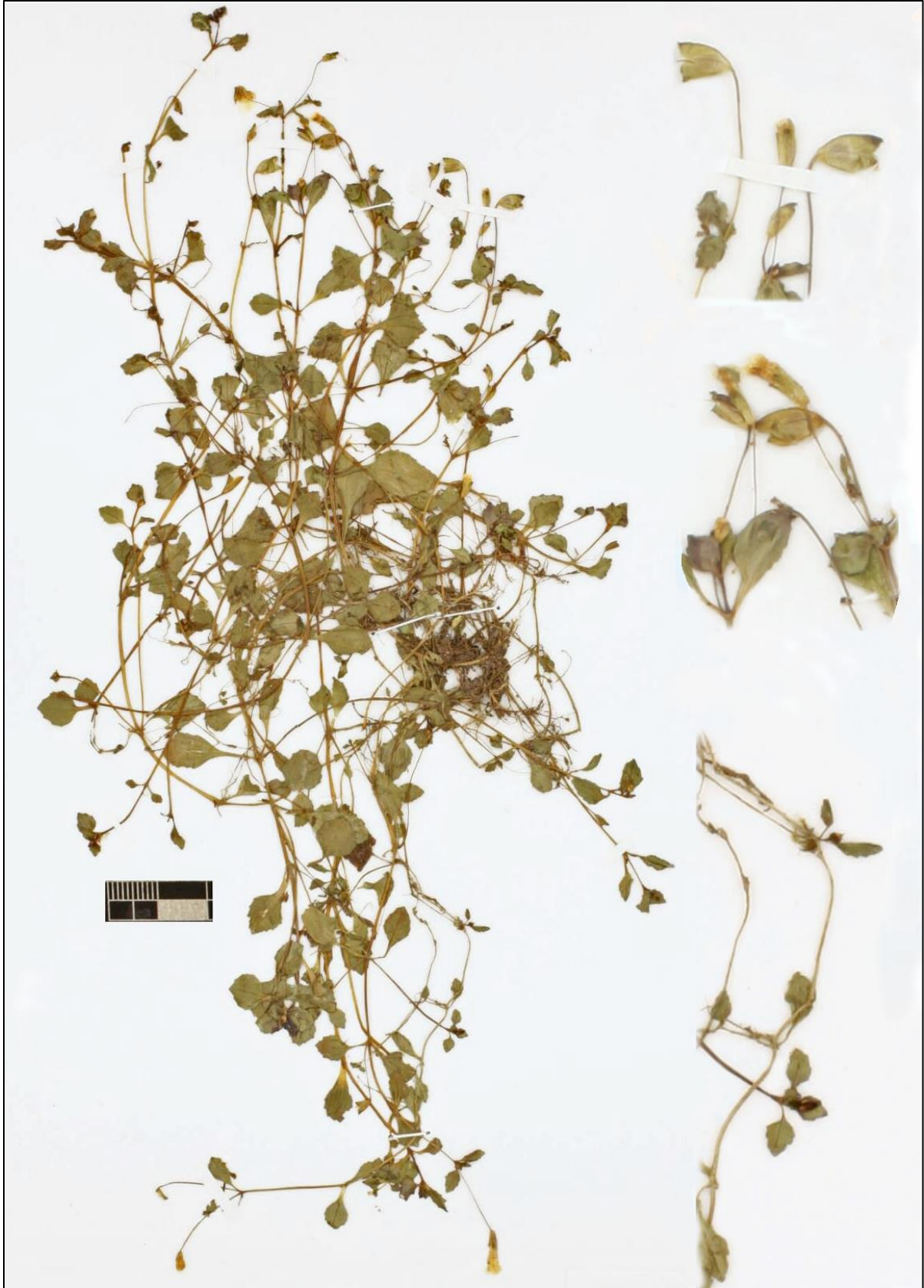


Figure 3. *Erythranthe visibilis*. Michoacán, Mpio. Tzitzio, *Vibrans* 6900 (MEXU).

Erythranthe dentiloba

A collection from northwestern Jalisco extends the range of *Erythranthe dentiloba* (Rob. & Fernald) Nesom considerably further south than previously mapped (Nesom 2017). The species apparently should be expected to occur as well in Nayarit, between the Jalisco locality and those to the north in Sinaloa.

Jalisco. Mpio. Atenguillo: 15 km NW of Los Volcanes on road to Talpa de Allende, slope with *Pinus*, *Quercus*, and *Arbutus*, 1890 m, 27 Nov 1983, *Breedlove 60623* (MEXU image).

LITERATURE CITED

- Nesom, G.L. 2012. Taxonomy of *Erythranthe* sect. *Simiola* (Phrymaceae) in the USA and Mexico. *Phytoneuron* 2012-40: 1–123.
- Nesom, G.L. 2013. New distribution records for *Erythranthe* (Phrymaceae). *Phytoneuron* 2013-67: 1–15.
- Nesom, G.L. 2014. Taxonomy of *Erythranthe* sect. *Erythranthe* (Phrymaceae). *Phytoneuron* 2014-31: 1–41.
- Nesom, G.L. 2017. *Erythranthe diminuens* (Phrymaceae), a new species of sect. *Simiolus* from Sonora. *Phytoneuron* 2017-7: 1–5.
- Pérez-Calix, E. y S. Zamudio. 2011. Una especie nueva de *Mimulus* L. (sección *Simiolus*, Phrymaceae) del noreste de Michoacán, México. *Acta Bot. Mex.* 97: 31–37.
- UNAM. 2021. Portal de Datos Abiertos UNAM, Colecciones Universitarias Universidad Nacional Autónoma de México. <<https://datosabiertos.unam.mx/>>.