

DAP Catalogue



Solid Audio Solutions

With the audio products from our extensive DAP range any performing artist, sound professional or installer will always have good sound at their disposal. Essential DAP gear equipped for mobile applications or fixed installations, for small venues or large events and offering analogue or digital solutions. We have changed the look and feel of the new catalogue. We have taken out all the accessories to give you a clear and complete overview of our core DAP solid audio solutions. You can find all accessories in our webshop. With this update DAP also presents some new, exciting solutions. Take your pick from the passive Pure speakers, the EDCS ceiling speakers or find out why the new EDGE-wireless microphones are so special.

Step right in!



DAP Audio Products



Audio Mixers

DJ Mixers	04
19 Inch Mixers	10
Live Mixers	18

Audio Players

CD & Media Players	24
--------------------	----

Audio Processing

Analogue Processing	28
Audio Tools	33
Digital Processing	34

Amplifiers

Analogue Amplifiers	36
Digital Amplifiers	40

Speakers

Passive Series	48
Active Series	56
Plug & Play Sets	80
Portable Sound Systems	84
Installation Series	86

Headphones

Studio Headphones	100
-------------------	-----

Microphones

Vocal Microphones	102
Instrument Microphones	106
Studio Microphones	112
Wireless Systems	114
Wireless Microphone Accessories	120

Public Addressing

Amplifiers	124
Speakers	134
PA Accessories	156

CORE Scratch

D2312 2 Channel Dj mixer

Special features:

- Bluetooth playback
- Master & Booth output
- 60mm faders
- MP3 / Phone input selector



Technical Information

Inputs channels:	1 x Microphone, combo XLR/Jack 4 x Line, RCA 1 x Bluetooth
Output channels:	1 x Record, RCA 1 x Booth, RCA 1 x Master unbalanced, RCA 1 x Headphones, TRS 6.3mm Jack
Channel EQ range:	-26dB / +12dB
Microphone EQ range:	-12dB / +12dB
Frequency response:	20Hz -20Khz
Mic S/N Ratio:	> 80dB
Line S/N Ratio:	> 85dB
Dimensions:	203 x 279 x 84 (WxDxH)
Power input:	AC15W/500mA (Adapter included)
Power consumption:	5W
Weight:	3,1 Kg



CORE Beat

D2313 3 Channel Dj mixer

Special features:

- Bluetooth playback
- Talk over function
- VU channel indication
- MP3 / Phone input selector



Technical Information

Inputs channels:

1 x Microphone, combo XLR/Jack

6 x Line, RCA

1 x Bluetooth

Output channels:

1 x Record, RCA

1 x Booth, RCA

1 x Master unbalanced, RCA

1 x Headphones, TRS 6.3mm Jack

Channel EQ range:

Microphone EQ range:

Frequency response:

Mic S/N Ratio:

Line S/N Ratio:

-26dB / +12dB

-12dB / +12dB

20Hz -20Khz

> 80dB

> 85dB

Dimensions:

Power input:

Power consumption:

Weight:

247 x 331 x 84 (WxDxH)

AC15V/750mA (Adapter included)

8W

4,1 Kg

CORE Club**D2314** 4 Channel Dj mixer

Special features:

- Bluetooth playback
- Talk over function
- VU channel indication
- MP3 / Phone input selector

**Technical Information**

Inputs channels:	1 x Microphone, combo XLR/Jack 8 x Line, RCA 1 x Bluetooth
Output channels:	1 x Record, RCA 1 x Booth, RCA 1 x Master unbalanced, RCA 1 x Headphones, TRS 6.3mm Jack
Channel EQ range:	-26dB / +12dB
Microphone EQ range:	-12dB / +12dB
Frequency response:	20Hz -20Khz
Mic S/N Ratio:	> 80dB
Line S/N Ratio:	> 85dB
Dimensions:	292 x 356 x 84 (WxDxH)
Power input:	AC15V/750mA (Adapter included)
Power consumption:	8,2W
Weight:	5 Kg



CORE MIX-2 USB**D2302** 2 Channel DJ mixer with USB interface

Special features:

- 2 built-in USB PC/MAC audio interfaces
- High quality components and structure
- 60mm VCA faders
- MP3 USB SD recorder
- LED VU meter each channel

**Technical Information**

Inputs channels:	1 x Microphone, combi XLR/Jack 4x Line, RCA 1x Phono, RCA 2 x USB, type B
Output channels:	1 x Record, RCA 1 x Master unbalanced, RCA 1 x Master balanced, XLR 1 x Headphones, 6,3mm Jack 2 x USB, type B
USB Port:	Audio in- & output interface for PC & Mac, 48 KHz, 16 bit
Channel EQ range:	-26dB / +12dB
Microphone EQ range:	-12dB / +12dB
Frequency response:	20Hz -20KHz
T.H.D:	<0.1%
MP3 Module:	128Kbit 44.1 KHz, Max 16GB
Dimensions:	240 x 300 x 88 (WxDxH)
Power supply:	100-240V AC, 50/60Hz
Power consumption:	8 Watt
Weight:	3,4 Kg
Full specification available in manual	

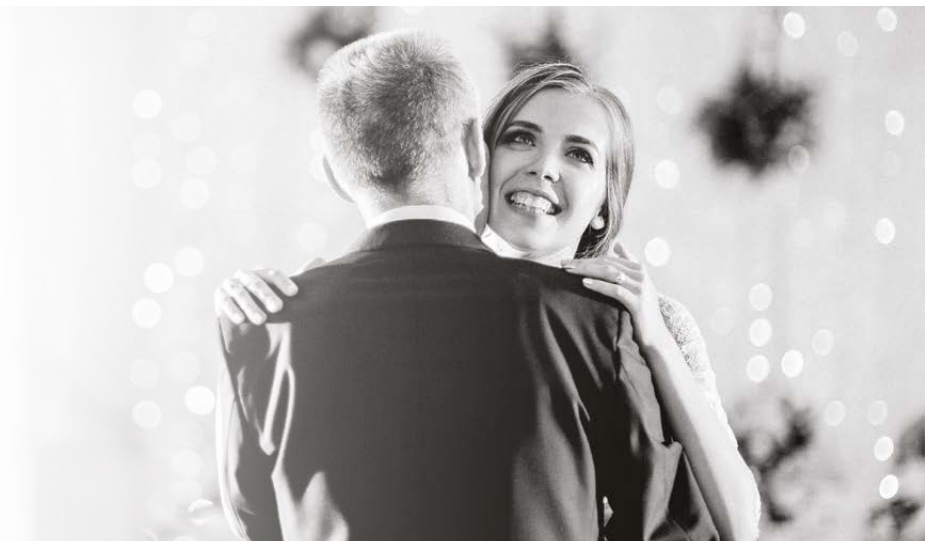


CORE MIX-3 USB

D2303 3 Channel DJ mixer with USB interface

Special features:

- 2 Built-in USB PC/MAC audio interfaces
- 60mm VCA faders
- MP3 USB SD recorder
- Variable FX send / Return each channel
- LED VU meter each channel



Technical Information

Inputs channels: 1 x Microphone, combo XLR/Jack
6 x Line, RCA
1 x Phono, RCA
2 x USB, Type B
1 x Return, RCA

Output channels: 1 x Record, RCA
1 x Booth, RCA
1 x Master unbalanced, RCA
1 x Master balanced, XLR
1 x Headphones, 6.3mm Jack
2 x USB, Type B
1 x Send, RCA

USB Port: Audio in- & output interface for PC & Mac, 48 KHz, 16 bit
Channel EQ range: -26dB / +12dB
Microphone EQ range: -12dB / +12dB
Frequency response: 20Hz -20KHz
T.H.D: <0.1%

MP3 Module: 128Kbit 44.1 Khz, Max 16GB
Dimensions: 268 x 380 x 88 (WxDxH)
Power supply: 100-240V AC, 50/60Hz
Power consumption: 10 Watt
Weight: 4.6 Kg



CORE MIX-4 USB

D2304 4 Channel DJ mixer with USB interface

Special features:

- 2 Built-in USB PC/MAC audio interfaces
- 60mm VCA faders
- MP3 USB SD recorder
- Variable FX send / Return each channel
- LED VU meter each channel

19" Rackmounts for Core Mix-4

D2310



Technical Information

Inputs channels: 2 x Microphone, combo XLR/Jack
8 x Line, RCA
2 x Phono, RCA
2 x USB, Type B
1 x Return RCA

Output channels: 1 x Record, RCA
1 x Booth, RCA
1 x Master unbalanced, RCA
1 x Master balanced, XLR
1 x Headphones, TRS 6.3mm Jack
2 x USB, Type B
1 x Send, RCA

USB Port: Audio in- & output interface for PC & Mac, 48 KHz, 16 bit
Channel EQ range: -26dB / +12dB
Microphone EQ range: -12dB / +12dB
Frequency response: 20Hz -20KHz
T.H.D: <0.1%

MP3 Module: 128Kbit 44.1 Khz, Max 16GB
Dimensions: 310 x 380 x 88 (WxDxH)
Power supply: 100-240V AC, 50/60Hz
Power consumption: 13 Watt
Weight: 5Kg
Full specification available in manual



Compact 6.2

D2320 6 Channel 1U mixer/USB player, 2 zones

Special features:

- Mic input with Comp/Limit
- USB Player with pitch control
- Display with ID3 Text
- Direct MP3 / Phone input
- 2 Masters & Monitor outputs



Technical Information

Input channels: 2 x Microphone, combo XLR/Jack 2 x Line, RCA, 1 x Phone, 3,5mm jack / RCA
 Output channels: 1x Master A RCA, 1x Master B, Balanced XLR & RCA, 1x Monitor RCA
 USB supported format: FAT up to 16Gb
 Audio format: MP3 128kbps, 192kbps, 224kbps, 256kbps, 320kbps
 Master EQ: 80Hz, 2,5KHz, 12KHz, -6dB / +6dB
 Frequency response: 20Hz - 20KHz
 T.H.D.: <0.01%
 Dimensions: 481 x 44 x 175 mm (LxHxD)
 Powersupply: 2x15V AC, 50Hz (Adapter included)
 Powerconsumption: 6Watt
 Weight: 2,2 Kg

Compact 9.2

D2322 9 Channel 1U install mixer, 2 zones

Special features:

- Channel displays that show the input source
- Gain settings at backpanel
- Main EQ settings at backpanel
- Front input for phone/mp3 devices
- Ideal for non-technical users

Technical Information

Input channels: 3 x Microphone, combo XLR/Jack 6 x Line, RCA 1 x Phone, 3,5mm jack
 Output channels: 2 x Master Balanced, XLR 80Hz, 2,5KHz, 12KHz, -6dB / +6dB
 Frequency response: 20Hz - 20KHz
 T.H.D.: <0.01%
 Dimensions: 481 x 44 x 175 mm (LxHxD)
 Powersupply: 2x15V AC, 50Hz (Adapter included)
 Powerconsumption: 6Watt
 Weight: 2,2 Kg



Compact 8.1**D2321** 8 Channel 1U install mixer, 1 output

Special features:

- 8 Combined Mic Line inputs
- EQ with mid sweep
- Phantom power
- Selectable Hi-pass filter

**Technical Information**

Input channels:	8 x Microphone, XLR 8 x Line, RCA
Output channels:	1 x Master Balanced, XLR 1 x Headphones, 6,3mm TRS Jack
Master EQ:	80Hz, 330-8200Hz, 12KHz, -12dB / +12dB
Frequency response:	20Hz - 20Khz
T.H.D.:	<0.01%
Dimensions:	481 x 44 x 175 mm (LxHxD)
Power supply:	2x15V AC, 50Hz (Adapter included)
Power consumption:	8Watt
Weight:	2,2 Kg

IMIX-7.1

D2350 7 Channel 2U install mixer, 3 outputs

Special features:

- Gain settings at backside
- Special front input for phone/mp3 devices
- 2 Mic, 11 Line inputs



Technical Information

Input channels: 2 x Microphone, combo XLR/Jack
 11 x Line, RCA
 2 x Phono, RCA

Output channels: 1 x Phono, 3.5mm jack
 2 x Master Balanced, XLR
 1 x Master output, RCA
 1 x REC output, RCA
 1 x Headphones, 6.3mm Jack

Master EQ: 80Hz, 1KHz, 12KHz, -12dB / +12dB
 Mic EQ: 80Hz, 1KHz, 12KHz, -12dB / +12dB
 Frequency response: 20Hz - 20KHz
 T.H.D.: <0.05%
 Dimensions: 481 x 88 x 95 mm (LxHxD)
 Powersupply: 230V AC, 50Hz
 Powerconsumption: 21Watt
 Weight: 2,8 Kg



IMIX-7.3

D2351 7 Channel 2U install mixer, 3 zones

Special features:

- Gain settings at backside
- Special front input for phone/mp3 devices
- Zone control for 3 balanced outputs
- 2 Mic, 11 Line inputs



Technical Information

- Input channels: 2 x Microphone, combo XLR/Jack
11 x Line, RCA
2 x Phono, RCA
- Output channels: 1 x Phone, 3.5mm jack
3 x Master Balanced, XLR
1 x REC output, RCA
1 x Headphones, 6.3mm Jack
- Master EQ: 80Hz, 1KHz, 12KHz, -12dB / +12dB
Mic EQ: 80Hz, 1KHz, 12KHz, -12dB / +12dB
Frequency response: 20Hz – 20KHz
T.H.D.: <0.05%
- Dimensions: 481 x 88 x 95 mm (LxHxD)
Powersupply: 230V AC, 50Hz
Powerconsumption: 21Watt
Weight: 2,8 Kg

IMIX-5.3**D2352** 5 Channel 4U install mixer, 3 zones

Special features:

- Master outputs with 3 way tone control
- Special front input for phone/mp3 devices
- Zone control for 3 balanced outputs
- 1 Mic, 7 Line, 2 Phono inputs

**Technical Information**

Input channels:	1 x Microphone, combo XLR/Jack 7 x Line, RCA 2 x Phono, RCA
Output channels:	1 x Phone, 3.5mm jack 3 x Master (Balanced), XLR/RCA 1 x Headphones, 6.3mm Jack
Master EQ:	100Hz, 1KHz, 10KHz, -12dB / +12dB
Mic EQ:	100Hz, 1KHz, 10KHz, -12dB / +12dB
Frequency response:	20Hz – 20KHz
T.H.D.:	<0.05%
Dimensions:	481 x 176 x 89 mm (LxHxD)
Power supply:	230V AC, 50Hz
Power consumption:	15Watt
Weight:	3.4 Kg



IMIX-7.2 USB**D2353** 7 Channel 6U install mixer USB 2 zones**Special features:**

- Channel displays that show the input source
- 2 built-in USB audio interfaces
- VCA controlled faders
- Reverb & talk-over on microphone channels
- Individual in- and output VU's
- No extra height units needed due to recessed connectors

**Technical Information****Input channels:**

2 x Microphone, combo XLR/Jack
8 x Line, RCA

Output channels:

2 x audio interface, USB-B chassis
1 x Phone, 3.5mm jack
2 x Master Balanced, XLR/RCA
1 x Record, RCA
1 x Monitor, RCA

Display presets:

CD 1, CD 2, TUNER, DVD, TV, BEAMER, PC1,
PC2, DJ, AREA 2, AUX 1, AUX 2

USB interfaces:

48Khz, 16bit plug & play for windows and MAC

Channel EQ:

80Hz, 1KHz, 12KHz, -12dB / +12dB

Mic EQ:

120Hz, 800Hz, 5KHz, -12dB / +12dB

Frequency response:

20Hz – 20KHz

T.H.D.:

<0.05%

Dimensions:

481 x 266 x 135 mm (LxHxD)

Power supply:

110-230V AC, 50/60Hz

Power consumption:

32Watt

Weight:

6,4 Kg

GIG-143 TAB**D2301** 14 Channel digital mixer incl. dynamics & DSP

Special features:

- Ultra-low noise discrete preamps with +48V Phantom Power
- High-definition ADC's (114dB dynamic range)
- Bright OLED Screen
- Digital Gate/Compressor/4-band full parametric EQ on each input
- Intuitive iPad App for remote control
- 8 direct access buttons for easy channel control
- 31-band graphical EQ on main output
- 24-bit FX engine
- 14 Analog inputs
- 6x user definable DCA's

**Technical Information**

Mono channels

Mic Inputs: XLR balanced
 Line Input: TRS balanced
 Freq Response: 20Hz ~ 20kHz, +/- 1,5dB
 Distortion (THD-N): <0,01% @ 0dB, 22Hz ~22kHz
 Max Input Level: +20dBu
 SNR: < -108dB
 Phantom Power: +48V

Stereo Channels

Line Input: TRS balanced
 Freq Response: 20Hz ~ 20kHz, +/- 1,5dB
 Distortion (THD-N): <0,01% @ 0dB, 22Hz ~22kHz
 Max Input Level: +20dBu
 SNR: < -108dB

EQ

LowPass: 19,2kHz
 Frequency Range: 20Hz ~ 20kHz
 Gain: 0dB +/- 18dB
 Q-factor: 0,4 ~ 128
 HighPass: 19,7Hz

Gate

Threshold Range: -75dB ~ 0dB
 Attack Time: 0,5ms ~ 200ms
 Release Time: 10ms ~ 1000ms
 Ratio: 1:1 ~ 1:10 until gate

Compressor

Threshold Range: -30dB ~ +20dB
 Attack Time: 10ms ~ 150ms
 Release Time: 10ms ~ 1000ms
 Ratio: 1:1 ~ 1:10 until limit
 Gain: 0 ~ +24dB

Impedances

Microphone input: 6,8K Ohm
 Other Inputs: 27K Ohm
 Other Outputs: 120 Ohm

Power Supply:

Power Consumption: 40W
 Measurements: 483 (19") x 134 (3HE) x 321mm
 Weight: 7,2Kg



GIG-62

D2281 6 Channel live mixer

Special features:

- Ultra-low noise discrete MIC Preamps with +48V Phantom Power
- 3-band EQ and Peak LEDs on each MIC channels. 2-band EQ and Peak LEDs on Stereo channels.
- AUX Sends per channel for external effects and monitoring.

Gig stand adapter

D2295 for GIG-62, GIG-83CFX, GIG-104C



Technical Information

Mono Channels

Mic Input: XLR balanced
 Line input: 1/4" TRS balanced
 Freq response: 10Hz ~ 55kHz, +/- 3dB
 Distortion (THD=N): <0,03% @ 0dB, 22Hz ~ 22kHz
 Gain range: 50dB
 Input sensitivity: -35dBu ~ +15dBu
 LOW Cut: 75Hz
 SNR: <-100dB
 Phantom Power: +48V switchable

Stereo Channels

Mic Input: XLR balanced
 Line input: 1/4" TRS/RCA unbalanced
 Freq response: 10Hz ~ 55kHz, +/- 3dB
 Distortion (THD=N): <0,03% @ 0dB, 22Hz ~ 22kHz
 Gain range: 50dB
 Input sensitivity: -20dBu ~ +20dBu
 LOW Cut: 75Hz

SNR: <-100dB
 Phantom Power: +48V switchable

Channels EQ

High: +/- 15dB @ 12kHz
 Mid: +/- 15dB @ 2,5kHz
 Low: +/- 15dB @ 80Hz

Impedances

Microphone input: 1,8K Ohm
 Other inputs: >10K Ohm
 Tape output: 1K Ohm
 All other outputs: 120 Ohm

Power supply: AC 100- 240V 50Hz/60Hz
 Power consumption: 40 Watt
 Measurements: 244 x 196 x 60mm
 Weight: 1,74 Kg



GIG-83CFX**D2282** 8 Channel live mixer incl. dynamics & DSP

Special features:

- Ultra-low noise discrete MIC Preamps with +48V Phantom Power
- Compressors control on first MIC channels
- 3-band EQ and Peak LEDs on each MIC channels. 2-band EQ and Peak LEDs on Stereo channels.
- Built-in 24-bit DSP effect with 100 presets.
- optional expandable with USB or Bluetooth player

MP3 USB record module for GIG**D2291**

Technical Information

Applicable for:

D2282	GIG-83CFX
D2283	GIG-104C
D2284	GIG-124C
D2285	GIG-124CFX
D2286	GIG-1000CFX
Dimensions:	123 x 42 mm

19" Gig Rackmounts 83CFX /104C**D2293****Gig stand adapter****D2295** for GIG-62, GIG-83CFX, GIG-104C

Technical Information

Mono Channels

Mic Input:	XLR balanced
Line input:	1/4" TRS balanced
Freq response:	10Hz ~ 55kHz, +/- 3dB
Distortion (THD=N):	<0,03% @ 0dB, 22Hz ~ 22kHz
Gain range:	50dB
Input sensitivity:	-35dBu ~ +15dBu
LOW Cut:	75Hz
SNR	<-100dB
Phantom Power:	+48V switchable

Stereo Channels

Mic Input:	XLR balanced
Line input:	1/4" TRS/RCA unbalanced
Freq response:	10Hz ~ 55kHz, +/- 3dB
Distortion (THD=N):	<0,03% @ 0dB, 22Hz ~ 22kHz
Gain range:	50dB
Input sensitivity:	-20dBu ~ +20dBu
LOW Cut:	75Hz

SNR	<-100dB
Phantom Power:	+48V switchable

Channels EQ	
High:	+/- 15dB @ 12kHz
Mid:	+/- 15dB @ 2,5kHz
Low:	+/- 15dB @ 80Hz

Impedances	
Microphone input:	1,8K Ohm
Other inputs:	>10K Ohm
Tape output:	1K Ohm
All other outputs:	120 Ohm

Power supply:	AC 100- 240V 50Hz/60Hz
Power consumption:	40 Watt
Measurements:	343 x 254 x 63mm
Weight:	2,48 Kg



GIG-104C**D2283** 10 Channel live mixer incl. dynamics

Special features:

- Ultra-low noise discrete MIC Preamps with +48V Phantom Power
- Compressors control on first MIC channels
- 3-band EQ and Peak LEDs on each MIC channels. 2-band EQ and Peak LEDs on Stereo channels.
- 1 AUX Sends POST Fader
- Optional expandable with USB or Bluetooth player

Gig stand adapter**D2295** for GIG-62, GIG-83CFX, GIG-104C**Technical Information****Mono Channels**

Mic Input: XLR balanced
 Line input: 1/4" TRS balanced
 Freq response: 10Hz ~ 55kHz, +/- 3dB
 Distortion (THD=N): <0,03% @ 0dB, 22Hz ~ 22kHz
 Gain range: 50dB
 Input sensitivity: -35dBu ~ +15dBu
 LOW Cut: 75Hz
 SNR: <-100dB
 Phantom Power: +48V switchable

Stereo Channels

Mic Input: XLR balanced
 Line input: 1/4" TRS/RCA unbalanced
 Freq response: 10Hz ~ 55kHz, +/- 3dB
 Distortion (THD=N): <0,03% @ 0dB, 22Hz ~ 22kHz
 Gain range: 50dB
 Input sensitivity: -20dBu ~ +20dBu
 LOW Cut: 75Hz

SNR: <-100dB
 Phantom Power: +48V switchable

Channels EQ

High: +/- 15dB @ 12kHz
 Mid: +/- 15dB @ 2,5kHz
 Low: +/- 15dB @ 80Hz

Impedances

Microphone input: 1,8K Ohm
 Other inputs: >10K Ohm
 Tape output: 1K Ohm
 All other outputs: 120 Ohm

Power supply: AC 100- 240V 50Hz/60Hz
 Power consumption: 40 Watt
 Measurements: 343 x 254 x 63mm
 Weight: 2,48 Kg



GIG-124CFX**D2285** 12 Channel live mixer incl. dynamics & DSP

Special features:

- Ultra-low noise discrete MIC Preamps with +48V Phantom Power
- Compressors control on first MIC channels
- 3-band EQ and Peak LEDs on each MIC channels. 2-band EQ and Peak LEDs on Stereo channels.
- Built-in 24-bit DSP effect with 100 presets.
- Optional expandable with USB or Bluetooth player

19" GIG Rackmounts 124C/124CFX

D2294

MP3 USB record module for GIG

D2291

**Technical Information****Mono Channels**

Mic Input: XLR balanced
 Line input: 1/4" TRS balanced
 Freq response: 10Hz ~ 55kHz, +/- 3dB
 Distortion (THD=N): <0,03% @ 0dB, 22Hz ~ 22kHz
 Gain range: 50dB
 Input sensitivity: -35dBu ~ +15dBu
 LOW Cut: 75Hz
 SNR: <-100dB
 Phantom Power: +48V switchable

Stereo Channels

Mic Input: XLR balanced
 Line input: 1/4" TRS/RCA unbalanced
 Freq response: 10Hz ~ 55kHz, +/- 3dB
 Distortion (THD=N): <0,03% @ 0dB, 22Hz ~ 22kHz
 Gain range: 50dB
 Input sensitivity: -20dBu ~ +20dBu
 LOW Cut: 75Hz

SNR: <-100dB
 Phantom Power: +48V switchable

Channels EQ

High: +/- 15dB @ 12kHz
 Mid: +/- 15dB @ 2,5kHz
 Low: +/- 15dB @ 80Hz

Impedances

Microphone input: 1,8K Ohm
 Other inputs: >10K Ohm
 Tape output: 1K Ohm
 All other outputs: 120 Ohm

Power supply: AC 100- 240V 50Hz/60Hz
 Power consumption: 40 Watt
 Measurements: 416 x 340 x 93mm
 Weight: 3,96 Kg



GIG-164CFX**D2287** 16 Channel live mixer incl. dynamics & DSP

Special features:

- Ultra-low noise discrete MIC Preamps with +48V Phantom Power
- Compressors control on first 6 MIC channels
- 3-band EQ with sweepable MID and Peak LEDs on each MIC channels. 4-band EQ and Peak LEDs on Stereo channels.
- Built-in 24-bit DSP effect with 100 presets.
- Built-in USB Soundcard



Technical Information

Mono Channels

Mic Input:	XLR balanced
Line input:	1/4" TRS balanced
Freq response:	10Hz ~ 55kHz, +/- 3dB
Distortion (THD=N):	<0,03% @ 0dB, 22Hz ~ 22kHz
Gain range:	50dB
Input sensitivity:	-35dBu ~ +15dBu
LOW Cut:	75Hz
SNR	<-114dB
Phantom Power:	+48V switchable

Stereo Channels

Mic Input:	XLR balanced
Line input:	1/4" TRS/RCA unbalanced
Freq response:	10Hz ~ 55kHz, +/- 3dB
Distortion (THD=N):	<0,03% @ 0dB, 22Hz ~ 22kHz
Gain range:	50dB
Input sensitivity:	-20dBu ~ +20dBu
LOW Cut:	100Hz
SNR	<-100dB
Phantom Power:	+48V switchable

Channels EQ mono

High:	+/- 15dB @ 12kHz, Shelving
Mid:	+/- 15dB @ 100-8kHz, Sweepable
Low:	+/- 15dB @ 80Hz, Shelving

Channels EQ stereo

High:	+/- 15dB @ 12kHz, Shelving
Mid:	+/- 15dB @ 3kHz
Mid:	+/- 15dB @ 500Hz
Low:	+/- 15dB @ 80Hz, Shelving

Impedances

Microphone input:	1,8K Ohm
Other inputs:	>10K Ohm
Tape output:	1K Ohm
All other outputs:	120 Ohm

USB Soundcard

Record:	1 stereo pair (switchable between GRP 1-2 and MAIN MIX)
Playback:	1 stereo pair (switchable between Ch 15-16 and MAIN MIX)

Power supply:	AC 100 - 240V 50Hz/60Hz
Power consumption:	50 Watt
Measurements:	535 x 435 x 85mm
Weight:	6,75 Kg

GIG-244CFX**D2288** 24 Channel live mixer incl. dynamics & DSP

Special features:

- Ultra-low noise discrete MIC Preamps with +48V Phantom Power
- Compressors control on first 8 MIC channels
- 3-band EQ with sweepable MID and Peak LEDs on each MIC channels. 4-band EQ and Peak LEDs on Stereo channels.
- Built-in 24-bit DSP effect with 100 presets.
- Built-in USB Soundcard

**Technical Information****Mono Channels**

Mic Input:	XLR balanced
Line input:	1/4" TRS balanced
Freq response:	10Hz ~ 55kHz, +/- 3dB
Distortion (THD=N):	<0,03% @ 0dB, 22Hz ~ 22kHz
Gain range:	50dB
Input sensitivity:	-35dBu ~ +15dBu
LOW Cut:	100Hz
SNR	<-100dB
Phantom Power:	+48V switchable

Stereo Channels

Mic Input:	XLR balanced
Line input:	1/4" TRS/RCA unbalanced
Freq response:	10Hz ~ 55kHz, +/- 3dB
Distortion (THD=N):	<0,03% @ 0dB, 22Hz ~ 22kHz
Gain range:	50dB
Input sensitivity:	-20dBu ~ +20dBu
LOW Cut:	75Hz
SNR	<-100dB
Phantom Power:	+48V switchable

Channels EQ mono

High:	+/- 15dB @ 12kHz, Shelving
Mid:	+/- 15dB @ 100-8kHz, Sweepable
Low:	+/- 15dB @ 80Hz, Shelving

Channels EQ stereo

High:	+/- 15dB @ 12kHz, Shelving
Mid:	+/- 15dB @ 3kHz
Mid:	+/- 15dB @ 500Hz
Low:	+/- 15dB @ 80Hz, Shelving

Impedances

Microwave input:	1,8K Ohm
Other inputs:	>10K Ohm
Tape output:	1K Ohm
All other outputs:	120 Ohm

USB Soundcard

Record:	1 stereo pair (switchable between GRP 1-2 and MAIN MIX)
Playback:	1 stereo pair (switchable between Ch 23-24 and MAIN MIX)

Power supply:	AC 100- 240V 50Hz/60Hz
Power consumption:	60 Watt
Measurements:	753 x 435 x 85mm
Weight:	9,35 Kg

TCD-100BT**D1257** 1U Professional Media Player

Special features:

- Backlite buttons
- Bluetooth playback
- Combined CD/USB/SD output
- Ir Remote control

**Technical Information**

CD/USB/SD	
Anti shock buffer:	30 sec
CD type:	CD/CDR/MP-3
USB & SD capacity:	up to 32GB
Output connector:	RCA
Output level:	1,2 V +/- 2 dB
THD:	< 0,1% at 1 kHz
S/N Ratio:	> 70dB at 1 kHz
Tuner	
AM band:	522 -1620 kHz
FM band:	87,5 – 108 MHz
Antenna:	75 Ohm Antenna terminal socket



Presets:	30
Output connector:	RCA
Bluetooth:	
Max distance:	25m dep. environnement sit.
General	
Power Supply:	AC 230V – 50/60 Hz
Power consumption:	50 Watt
Dimensions:	482 x 44 x 250 mm (LxWxH)
Weight:	3,7 kg

CDR-110 MKIV

D1259 1U CD Player / USB Recorder

Special features:

- Backlite buttons
- Adjustable record Level with indication
- Combined CD/USB/SD output
- Ir Remote control



Technical Information

Power supply:	AC 230V - 50 Hz
Power consumption:	50 Watt
Input:	USB/SD/MMC, CD, RCA stereo input
THD:	1 kHz, <0,3%
USB/SD capacity:	up to 32Gb
S/N Ratio:	> 60 dB
Separation:	> 60 dB
Output level:	1 kHz / o dB = 1,2V +/- 2 dB
Mac record input:	800mV
Dimensions:	482 x 250 x 44 mm
Weight:	3,1 kg
Accessories:	Remote control



MPR-200BT**D1248** 1U Professional media player recorder**Special features:**

- Backlit buttons
- Recorder & Player
- Wide Bluetooth range
- IR remote control

Technical Information

CD/USB/SD

Anti-shock buffer: 30 sec
 CD type: CD/CDR/MP-3
 USB & SD capacity: up to 32GB
 Output connector: RCA
 Output level: 1,2 V +/- 2 dB
 THD: < 0,1% at 1 kHz
 S/N Ratio: > 70dB at 1 kHz

Tuner

FM band: 87,5 – 108 MHz
 Antenna: 75 Ohm Antenna terminal socket
 Presets: 30
 Output connector: RCA

Bluetooth:

Max distance: 25m dep. environment sit.

General

Power Supply: AC 230V – 50/60 Hz
 Power consumption: 50 Watt
 Dimensions: 482 x 44 x 250 mm (LxWxH)
 Weight: 3,7 kg

**UBR-180BT****D1258** 1U Bluetooth USB Player Recorder**Special features:**

- Backlit buttons
- Bluetooth playback
- Separate USB, Bluetooth output
- Adjustable record Level with indication

**Technical Information**

USB/SD
 USB & SD capacity: up to 32GB
 Output connector: RCA
 Output level: 1,2 V +/- 2 dB
 THD: < 0,1% at 1 kHz
 S/N Ratio: > 70dB at 1 kHz

Bluetooth:

Max distance: 25m dep. Env. Sit.

General

Power Supply: AC 230V – 50/60 Hz
 Power consumption: 50 Watt
 Dimensions: 482 x 44 x 185 mm (LxWxH)
 Weight: 3,2 kg

IR-100**D1249** Professional Internet Radio

Special features:

- Built-in Wifi
- USB Media player & Tuner
- Full colour display
- DNLA

**Technical Information**

Internet radio

Features: Favorites, Genre, Local, Search, DNLA Tuner
 FM band: 87,5 – 108 MHz
 Presets: 5

Media player

Source: USB type A
 Supported files: MP3, WMA
 Format: FAT32 up to 32Gb
 Playback: Program, Repeat, Continuous

Output

Output level: 1,2 V +/- 2 dB
 THD: < 0,1% at 1 kHz
 S/N Ratio: > 70dB at 1 kHz

Connections

Aux in: 3,5mm jack & RCA
 Output: RCA

Antenna: 750hm
 Network: Wifi & RJ-45

General

Power Supply: AC 230V – 50/60 Hz
 Power consumption: 50 Watt
 Dimensions: 482 x 44 x 240mm (LxWxH)
 Accessories incl: IR-remote (excl 2x AAA battery), WiFi Antenna
 Weight: 2,3kg



AS-8**D1904** Audio splitter & mixer

Special features:

- Selectable splitter/mixer function
- Wide range headroom
- 8 inputs
- 8 outputs

**Technical Information**

Input Connectors:	XLR and 1/4" TRS
Input impedance:	50 KOhm balanced, 25 KOhm unbalanced
Max. input level:	+21 dBu
Output connectors:	XLR and 1/4" TRS
Output impedance:	60 Ohm balanced, 30 Ohm unbalanced
Freq Response:	5 Hz – 40 KHz
Controls:	input levels, output levels, main link switch, bal/pan switch, ground lift
SNR:	>95 dBu
THD:	< 0,002% typ. @ +4 dBu, 1KHz
Indicators:	6-digits LED 18/-12/-6/0/+12/clip
Power Supply:	230V AC, 50Hz
Consumption:	15W
Dimensions:	483x195x44 (WxDxH)
Weight:	2,7Kg

PMM-401

D1531 4 Channel Passive Mixer

Special features:

- no power-supply needed
- stereo in- and outputs
- 4-in, 1-out mixer
- 1-in, 4-out splitter



Technical Information

Frequency Response: 20Hz-20KHz
 Inputs: 6,3 TRS Jack,
 Outputs: 6,3 TRS Jack
 Input Impedance: 1Meg
 Input Impedance: 50 kOhm
 Output Impedance: 12 KOhm
 Dimensions: 53 x 158 x 135 mm (HxWxD)
 Weight: 0,67 Kg

AMM-401

D1532 4 Channel Active Mixer

Special features:

- 2 stereo inputs
- 2 mono inputs
- Balanced outputs
- Selectable line/instrument mono inputs



Technical Information

Frequency Response: 20Hz-20KHz
 Inputs: RCA, XLR/Jack Combo
 Outputs: XLR male
 Input Impedance line: 1Meg
 Input Impedance: 50 kOhm
 Output Impedance: 12 KOhm
 Power supply: 18V AC (adapter included)
 Dimensions: 53 x 158 x 135 mm (HxWxD)
 Weight: 0,7 Kg

PRE-202

D1533 2 Channel Microphone Preamp

Special features:

- Switchable Phantom power
- Switchable low cut
- Level control
- Low noise preamps



Technical Information

Frequency Response: 20Hz-20KHz
 Inputs: XLR/Jack Combo
 Outputs: XLR male
 Input sensitivity: -50dBV
 Max input voltage: -4 dBu
 Max output voltage: +22 dBu
 Power supply: 18V AC (adapter included)
 Dimensions: 53 x 158 x 135 mm (HxWxD)
 Weight: 0,67 Kg



ASC-202**D1535** 2 Way Stereo Converter

The ASC-202 converts consumer level stereo RCA signals to balanced XLR professional line level, and back. One side of the unit, has two XLR inputs and stereo RCA outputs. The other side has stereo RCA inputs and two XLR outputs. Each side has stereo level controls. A possible application of the SC-13 is to use it as a level control in balanced audio lines.

**AMP-104****D1536** 4 Ch. Headphone Amplifier

The AMP-104 is for expanding or generating 4 headphones channels. It has a 6,3 TRS Jack stereo input and also a RCA stereo input which makes it convenient for multiple applications. All 4 outputs have their own volume controls and the headphones can be connected at both sides of the AMP-104. This makes it also possible to connect 8 headphones, which will be operated in groups of 2 pcs.

**ELI-101****D1537** Stereo Hum Eliminator

The ELI-101 is the perfect tool to solve all hum, buzz and ground loop problems in a professional audio chain. It is a non-powered solution which means it can be applied at all places without the need of an power outlet. It is equipped with XLR connectors which will always secure reliable connections.

**ADI-101****D1946** Active DI box

The ADI-101 is created to help professionals who haven't got the time for interference. It will protect your system for ground loops, potential hum and buzz. Because of the solide metal body and rubber feet it is very road-proof.

**Technical Information**

Frequency Response: 20Hz-20KHz
 Inputs: XLR/Jack Combo, RCA
 Outputs: XLR male, RCA
 Input sensitivity RCA in: -10 dBv
 Input Impedance RCA in: 10 kOhm
 Input sensitivity XLR/Jack in: +4 dBu
 Input Impedance XLR/Jack in: 20 kOhm
 Output voltage RCA Out: -10 dBV
 Output Impedance XLR Out: 100 Ohm
 Output voltage XLR Out: +4 dBu
 Output Impedance XLR Out: 200 Ohm
 Power supply: 18V AC (adapter included)
 Dimensions (HxWxD): 53 x 158 x 135 mm
 Weight: 0,65 Kg

Technical Information

Frequency Response: 20Hz-20KHz
 Inputs: 6,3 TRS Jack, RCA
 Outputs: 6,3 TRS Jack (8x)
 Output impedance: 2x 50 Ohm
 Output power: 2x 50mW @ 320hm
 Power supply: 18V AC (adapter included)
 Dimensions (HxWxD): 53 x 158 x 135 mm
 Weight: 0,72 Kg

Technical Information

Frequency Response: 20Hz-20KHz
 Inputs: XLR Male
 Outputs: XLR Female
 Dimensions (HxWxD): 53 x 158 x 120 mm
 Weight: 0,72 Kg

Technical Information

Frequency Response: 10Hz-40KHz
 Noise Level: < -105db
 Distortion (THD): < 0.005% at 1kHz,
 0dbu output
 Inputs: XLR & 1/4" Jack unbalanced
 Link out: 1/4" Jack unbalanced
 Output: XLR balanced
 Power supply: 9V Battery or 18 - 48V DC (phantom)
 Input Impedance: >250KΩ
 Load Impedance: >600Ω
 Dimensions (HxWxD): 53 x 158 x 120 mm
 Weight: 0,8 Kg

ADI-200

D1943 Active direct box

Special features:

- Roadproof housing with rubber feet
- Low distortion
- Ground lift
- 20dB Attenuation switch



Technical Information

Frequency Response:	10Hz-40KHz
Noise Level:	< -105db
Distortion (THD):	< 0.005% at 1kHz, 0dbu output
Inputs:	XLR & 1/4" Jack unbalanced
Link out:	1/4" Jack unbalanced
Output:	XLR balanced
Power supply:	9V Battery or 18 - 48V DC (phantom)
Input Impedance:	>250K Ω
Load Impedance:	>600 Ω
Dimensions:	55 x 135 x 145mm (HxWxD)
Weight:	0,65 Kg

PDI-200

D1944 Stereo passive direct injection box

Special features:

- Road proof housing with rubber feet
- Low distortion
- No power supply needed
- 0, 20 ,40db attenuation settings



SDI-202

D1947 Stereo Active DI box

Special features:

- Jack & RCA inputs
- 9V power supply ore 18-48V phantom power
- Ground lift
- Instrument & speaker inputs



Technical Information

Input:	6,3mm Jack
Link:	6,3mm Jack
Output:	XLR Male
Input Impedance:	50,000 Ohms
Output Impedance:	500 Ohms
Frequency Response:	30 – 50,000 Hz (1 dB)
THD at 400 Hz:	0.003%
Fixed Natural Attenuation:	20 dB
Attenuation Settings:	0, 20, 40 dB
Crosstalk at 1 kHz at 0 dBu:	-96 dBu
Dimensions:	140 x 110 x 55 mm
Weight:	1.1 kg

Technical Information

Frequency Response:	10Hz-40KHz
Noise Level:	< -105db
Distortion (THD):	< 0.005% at 1kHz, 0dbu output
Inputs:	6,3 TRS Jack, RCA
Link out:	6,3 TRS Jack
Output:	XLR Male balanced
Power supply:	9V Battery or 18 - 48V DC (phantom)
Input Impedance instrument:	1Meg
Input Impedance speaker:	47 kOhm
Max input level instrument:	+9dBu / 2.18V
Max input level speaker:	+39dBu / 69V
Dimensions:	53 x 158 x 135 mm (HxWxD)
Weight:	0,7 Kg

PRE-101

D1530 Phono RIAA equalized pre-amp

Special features:

- Solid housing
- RIAA Equalization
- High quality components



COM-ART

D1414 Wireless Audio System

Special features:

- Battery powered
- Up to 50m (line of sight)
- Receiver & Transmitter
- 16 Channels



Technical Information

Frequency Response: 20Hz-20KHz RIAA
 Inputs: RCA
 Outputs: RCA
 Input sensitivity: 3mV for 1000 mV output
 Input Impedance: 47 kOhm
 Nominal Output Voltage: 0 dBV
 Max Output voltage: +16 dBu
 Output impedance: 100-600 Ohms
 Power supply: 18V AC (adapter included)
 Dimensions: 40 x 113 x 80 mm (HxWxD)
 Weight: 0,35 Kg

Technical Information

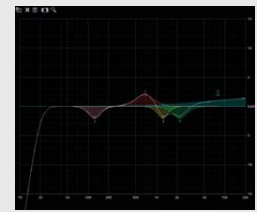
Frequency: 606-630 Mhz
 Channels: 16
 RF Power: 10mW (transmitter)
 Freq response: 30Hz – 17KHz (+/-3dB)
 Distortion: 1KHz <0.3%
 SNR: >98dB
 Battery power: 1x AA(LR6) 1.5V
 Battery life: >5 Hours
 Power supply: Mini USB 5VDC 80mA
 Dimensions: 114 x 22 x 23mm
 Weight: 33 gram

DGP-24 MKII

D2083 Digital Cross Over 2-in, 4-out

Special features:

- 48 Khz, 64Bits Sample rate
- 5 parametric EQ's each in- and output
- USB interface and user-friendly software included
- 50 User Presets



Technical Information

DSP:
 Sample rate: 48 kHz, 64 bits NXP (Philips) DSP

5-Bands Input EQ:
 EQ Selections: Allpass, Bell, High Shelf, Low Shelf, Notch
 EQ Frequency Selection: 20 to 20,000 Hz in 1 Hz steps on all EQ's

Delay:
 Output delay: Channel independent from 0 to 8 mS

5-Bands Output EQ:
 EQ Selections: same as input
 Type: Low Shelf 6, Low Shelf 12, High Shelf 6 and High Shelf 12

Crossovers:
 Types: Linkwitz Riley, Bessel and Butterworth
 Slopes: 6, 12, 18, 24 dB/octave
 Crossover frequencies: 20 to 20,000 Hz in 1 Hz octave steps

Limiter:
 Threshold points: -20 to +20 dBu in 0.5 dB steps
 Attack time: Zero Attack Time Limiter
 Release times: 1 = shortest, 100 = endless long, in steps of 1.

Miscellaneous:
 Memory Storage: 50 User presets
 Mute: All Output channels can be individually muted

Display:
 Latency: 2 x 16 dot matrix characters
 USB Interface: 1.27 mS
 Back: Back
 Power Supply: 6V DC
 Power Consumption: 4 Watt
 Power Switch: Back
 Measurements: 483 x 155 x 44 mm
 Accessories: Power adapter, USB cable, DSP software

DCP-26 MKII**D2084** Digital Cross Over 2-in, 6-out

Special features:

- 48 KHz, 64Bits Sample rate
- 5 parametric EQ's each in- and output
- USB interface and user-friendly software included
- 50 User Presets

**Technical Information**

DSP:
Sample rate: 48 kHz, 64 bits NXP (Philips) DSP

5-Bands Input EQ:
EQ Selections: Allpass, Bell, High Shelf, Low Shelf, Notch

EQ Frequency Selection:
20 to 20,000 Hz in 1 Hz steps on all EQ's

Delay:
Output delay: Channel independent from 0 to 8 mS

5-Bands Output EQ:
EQ Selections: same as input
Type: Low Shelf 6, Low Shelf 12, High Shelf 6 and High Shelf 12

Crossovers:
Types: Linkwitz Riley, Bessel and Butterworth

Slopes: 6, 12, 18, 24 dB/octave

Crossover frequencies: 20 to 20,000 in 1 Hz octave steps

Limiter:
Threshold points: -20 to +20 dBu in 0.5 dB steps
Attack time: Zero Attack Time Limiter
Release times: 1 = shortest, 100 = endless long, in steps of 1.

Miscellaneous:
Memory Storage: 50 User presets
Mute: All Output channels can be individually muted

Display: 2 x 16 dot matrix characters
Latency: 1.27 mS

USB Interface: Back
Power Supply: 6V DC
Power Consumption: 4 Watt
Power Switch: Back
Measurements: 483 x 155 x 44 mm
Accessories: Power adapter, USB cable, DSP software

HP-500

D4175 2U 2x200W Amplifier

Special features:

- Full protection circuits
- Efficient forced air cooling
- Stereo & Bridge mode



HP-900

D4176 2U 2x 450W Amplifier

Special features:

- Full protection circuits
- Efficient forced air cooling
- Stereo & Bridge mode



Technical Information

Output Power	Not Allowed
Stereo 20hm:	2x 200 Watt RMS
Stereo 40hm:	2x 150 Watt RMS
Stereo 80hm:	Not Allowed
Bridge 20hm:	Not Allowed
Bridge 40hm:	Not Allowed
Bridge 80hm:	1x400 Watt RMS
Frequency Response:	10Hz – 20KHz, +/-1dB
THD:	<0.5%
S/N rate:	>100dB A-weighted
Crosstalk:	>75dB
Damping Factor:	>100 8 OHM
Gain:	32dB
Input Sensitivity:	0.775V (+/-1dBv)
Input Impedance:	20kOhm balanced, 10kOhm unbalanced
Output Mode:	Stereo / Parallel / Bridge
Amp Technology:	Class AB
Protection:	Clip Limiter (Fixed) Short Circuit Overheat Overload DC Voltage
Cooling:	Forced-air by axial fan
Airflow:	Front to side
Input Connectors:	3-pin XLR
Output Connectors:	Speakon
Power Connector:	IEC
Input Voltage:	210–240VAC, 50/60Hz
Dimensions:	483 x 310 x 88mm
Weight:	8Kg

Technical Information

Output Power	Not Allowed
Stereo 20hm:	2x 450 Watt RMS
Stereo 40hm:	2x 350 Watt RMS
Stereo 80hm:	Not Allowed
Bridge 20hm:	Not Allowed
Bridge 40hm:	Not Allowed
Bridge 80hm:	1x900 Watt RMS
Frequency Response:	10Hz – 20KHz, +/-1dB
THD:	<0.5%
S/N rate:	>100dB A-weighted
Crosstalk:	>75dB
Damping Factor:	>100 8 OHM
Gain:	32dB
Input Sensitivity:	0.85V (+/-1dBv)
Input Impedance:	20kOhm balanced, 10kOhm unbalanced
Output Mode:	Stereo / Parallel / Bridge
Amp Technology:	Class AB
Protection:	Clip Limiter (Fixed) Short Circuit Overheat Overload DC Voltage
Cooling:	Forced-air by axial fan
Airflow:	Front to side
Input Connectors:	3-pin XLR
Output Connectors:	Speakon
Power Connector:	IEC
Input Voltage:	210–240VAC, 50/60Hz
Dimensions:	483 x 310 x 88mm
Weight:	10Kg

HP-1500

D4177 2U 2x 750W Amplifier

Special features:

- Full protection circuits
- Efficient forced air cooling
- Stereo & Bridge mode



Technical Information

Output Power	Not Allowed
Stereo 20hm:	2x 750 Watt RMS
Stereo 40hm:	2x 500 Watt RMS
Stereo 80hm:	Not Allowed
Bridge 20hm:	Not Allowed
Bridge 40hm:	Not Allowed
Bridge 80hm:	1x1500 Watt RMS
Frequency Response:	10Hz – 20KHz, +/-1dB
THD:	<0.5%
S/N rate:	>100dB A-weighted
Crosstalk:	>75dB
Damping Factor:	>250 8 OHM
Gain:	34.5dB
Input Sensitivity:	0.775V (+/-1dBV)
Input Impedance:	20kOhm balanced, 10kOhm unbalanced
Output Mode:	Stereo / Parallel / Bridge
Amp Technology:	Class H
Protection:	Clip Limiter (Fixed) Short Circuit Overheat Overload DC Voltage
Cooling:	Forced-air by axial fan
Airflow:	Front to side
Input Connectors:	3-pin XLR
Output Connectors:	Speakon
Power Connector:	IEC
Input Voltage:	210–240VAC, 50/60Hz
Dimensions:	483 x 360 x 88mm
Weight:	13 Kg

HP-2100**D4178** 2U 2x 1000W Amplifier

Special features:

- Full protection circuits
- Efficient forced air cooling
- Stereo & Bridge mode

**Technical Information**

Output Power	
Stereo 20hm:	Not Allowed
Stereo 40hm:	2x 1000 Watt RMS
Stereo 80hm:	2x 700 Watt RMS
Bridge 20hm:	Not Allowed
Bridge 40hm:	Not Allowed
Bridge 80hm:	1x2000 Watt RMS
Frequency Response:	10Hz – 20KHz, +/-1dB
THD:	<0.5%
S/N rate:	>100dB A-weighted
Crosstalk:	>75dB
Damping Factor:	>250 8 OHM
Gain:	34.5dB
Input Sensitivity:	0.85V (+/-1dBV)
Input Impedance:	20kOhm balanced, 10kOhm unbalanced
Output Mode:	Stereo / Parallel / Bridge
Amp Technology:	Class H
Protection:	Clip Limiter (Fixed) Short Circuit Overheat Overload DC Voltage
Cooling:	Forced-air by axial fan
Airflow:	Front to side
Input Connectors:	3-pin XLR
Output Connectors:	Speakon
Power Connector:	IEC
Input Voltage:	210~240VAC, 50/60Hz
Dimensions:	483 x 360 x 88mm
Weight:	14Kg

HP-3000

D4179 2U 2x 1400W Amplifier

Special features:

- Full protection circuits
- Efficient forced air cooling
- Stereo & Bridge mode



Technical Information

Output Power	Not Allowed
Stereo 20hm:	2x 1400 Watt RMS
Stereo 40hm:	2x 1200 Watt RMS
Stereo 80hm:	Not Allowed
Bridge 20hm:	Not Allowed
Bridge 40hm:	Not Allowed
Bridge 80hm:	1x2800 Watt RMS
Frequency Response:	10Hz – 20KHz, +/-1dB
THD:	<0.5%
S/N rate:	>100dB A-weighted
Crosstalk:	>75dB
Damping Factor:	>100 8 OHM
Gain:	36dB
Input Sensitivity:	0.775V (+/-1dBv)
Input Impedance:	20kOhm balanced, 10kOhm unbalanced
Output Mode:	Stereo / Parallel / Bridge
Amp Technology:	Class H 3-STEP
Protection:	Clip Limiter (Fixed) Short Circuit Overheat Overload DC Voltage
Cooling:	Forced-air by axial fan
Airflow:	Front to side
Input Connectors:	3-pin XLR
Output Connectors:	Speakon
Power Connector:	IEC
Input Voltage:	210–240VAC, 50/60Hz
Dimensions:	483 x 400 x 88mm
Weight:	17Kg

CA-2150

D4510 2 Channel Compact Amp

Special features:

- Soft start technology
- Advanced protection circuits
- SMPS & Class-D Amp Technology



Technical Information

Output Power	
Stereo 20hm:	Not recommended
Stereo 40hm:	2x 150 Watt RMS
Stereo 80hm:	2x 90 Watt RMS
Bridge 20hm:	Not Allowed
Bridge 40hm:	1x 275 Watt RMS
Bridge 80hm:	1x 190 Watt RMS
Frequency Response:	20Hz – 20KHz, +0/-1dB
THD:	<0.1%
S/N rate:	>96 dB A-weighted
Crosstalk:	>70dB
Damping Factor:	>180
Gain:	28V
Input Sensitivity:	0,9-1,1V (+/-1dBv)
Input Impedance:	20kOhm balanced, 10kOhm unbalanced
Output Mode:	Stereo / Bridged
Amp Technology:	Class D
Power Supply:	SMPS

Protection:	Clip Limiter (Fixed) Short Circuit Overheat Overload DC Voltage Soft Start
Cooling:	Forced-air by axial fan
Airflow:	Front to side
Input Connectors:	3-pin XLR, TRS 6,3mm Jack
Output Connectors:	Speakon, TRS 6,3mm Jack
Power Connector:	IEC
Input Voltage:	210~240VAC... 50/60Hz
Power Consumption:	450W
Dimensions:	484x281x44mm
Installation depth:	278mm (excl. conn.)
Weight:	3,7Kg

CA-3150

D4511 3 Channel Compact Amp

Special features:

- Soft start technology
- Advanced protection circuits
- SMPS & Class-D Amp Technology
- Configurable Crossover built-in



Technical Information

Output Power

Stereo 20hm:	Not recommended
Stereo 40hm:	2x 150 Watt RMS
Stereo 80hm:	2x 90 Watt RMS
SUB 20hm:	Not recommended
SUB 40hm:	1x 220 Watt RMS
SUB 80hm:	1x 120 Watt RMS
Frequency Response:	20Hz – 20KHz, +0/-1dB
THD:	<0.1%
S/N rate:	>96 dB A-weighted
Crosstalk:	>70dB
Damping Factor:	>180
Gain:	28V
Input Sensitivity:	0,9-1,1V (+/-1dBv)
Input Impedance:	20kOhm balanced, 10kOhm unbalanced
Output Mode:	Stereo / Bridged
Amp Technology:	Class D
Power Supply:	SMPS
Protection:	Clip Limiter (Fixed)

Cooling:

Airflow:

Input Connectors:

Output Connectors:

Power Connector:

Input Voltage:

Power Consumption:

Dimensions:

Installation depth:

Weight:

Short Circuit

Overheat

Overload

DC Voltage

Soft Start

Forced-air by radial fan

Front to back

Euroblock (included)

Euroblock (included)

IEC

210–240VAC... 50/60Hz

500W

484x281x44mm

278mm (excl. conn.)

4,5Kg

CA-4150

D4512 4 Channel Compact Amp

Special features:

- Soft start technology
- Advanced protection circuits
- SMPS & Class-D Amp Technology
- Configurable Crossover built-in



Technical Information

Output Power	
Stereo 20hm:	Not recommended
Stereo 40hm:	4x 150 Watt RMS
Stereo 80hm:	4x 90 Watt RMS
Bridge 20hm:	Not Allowed
Bridge 40hm:	2x 275 Watt RMS
Bridge 80hm:	2x 190 Watt RMS
Frequency Response:	20Hz – 20KHz, +0/-1dB
THD:	<0.1%
S/N rate:	>96 dB A-weighted
Crosstalk:	>70dB
Damping Factor:	>180
Gain:	28V
Input Sensitivity:	0,9-1,1V (+/-1dBv)
Input Impedance:	20kOhm balanced, 10kOhm unbalanced
Output Mode:	Stereo / Bridged
Amp Technology:	Class D

Power Supply:	SMPS
Protection:	Clip Limiter (Fixed) Short Circuit Overheat Overload DC Voltage Soft Start
Cooling:	Forced-air by radial fan
Airflow:	Front to back
Input Connectors:	Euroblock (included)
Output Connectors:	Euroblock (included)
Power Connector:	IEC
Input Voltage:	210~240VAC... 50/60Hz
Power Consumption:	800W
Dimensions:	484x281x44mm
Installation depth:	278mm (excl. conn.)
Weight:	4,7Kg

CA-2300

D4513 2 Channel Compact Amp

Special features:

- Soft start technology
- Advanced protection circuits
- SMPS & Class-D Amp Technology



Technical Information

Output Power	
Stereo 20hm:	Not recommended
Stereo 40hm:	2x 300 Watt RMS
Stereo 80hm:	2x 200 Watt RMS
Bridge 20hm:	Not Allowed
Bridge 40hm:	1x 400 Watt RMS
Bridge 80hm:	1x 300 Watt RMS
Frequency Response:	20Hz – 20KHz, +0/-1dB
THD:	<0.1%
S/N rate:	>98 dB A-weighted
Crosstalk:	>70dB
Damping Factor:	>180
Gain:	30V
Input Sensitivity:	0,9-1,1V (+/-1dBv)
Input Impedance:	20kOhm balanced, 10kOhm unbalanced
Output Mode:	Stereo / Bridged
Amp Technology:	Class D
Power Supply:	SMPS

Protection:	Clip Limiter (Fixed) Short Circuit Overheat Overload DC Voltage Soft Start
Cooling:	Forced-air by radial fan
Airflow:	Front to back
Input Connectors:	3-pin XLR, TRS 6,3mm Jack
Output Connectors:	Speakon, TRS 6,3mm Jack
Power Connector:	IEC
Input Voltage:	210~240VAC... 50/60Hz
Power Consumption:	750W
Dimensions:	484x281x44mm
Installation depth:	278mm (excl. conn.)
Weight:	4,7Kg



CA-4500 DSP**D4515** 4 Channel DSP Powered Amp

Special features:

- 4-channel DSP powered amplifier
- OLED display and PC configurable
- SMPS & Class-D Amp Technology
- Advanced protection circuits
- Low impedance and 70/100V output

**Technical Information**

Output Power	Not Allowed
4ch 20hm:	4x 500 Watt RMS
4ch 40hm:	4x 250 Watt RMS
4ch 80hm:	Not Allowed
Bridge 20hm:	Not Allowed
Bridge 40hm:	Not Allowed
Bridge 80hm:	2x 1000 Watt RMS
Frequency Response:	20Hz – 20KHz, +0/-1dB
THD:	<0.15%
S/N rate:	>96 dB A-weighted
Crosstalk:	>60dB
Damping Factor:	>180
Gain:	34db
Input Sensitivity:	0.9-1,1V (+/-1dBv)
Input Impedance:	20kOhm balanced, 10kOhm unbalanced
Output Mode:	4-channel / Stereo / Bridged
Amp Technology:	Class D
Power Supply:	SMPS

Protection:	Clip Limiter Short Circuit Overheat Overload Ultrasonic DC Voltage Soft Start
Cooling:	Forced-air by axial fan
Airflow:	Front to back
Input Connectors:	3-pin XLR
Output Connectors:	Speakon
Power Connector:	IEC
Input Voltage:	210~240VAC... 50/60Hz
Power Consumption:	1100W
Dimensions:	483x285x44,5mm (WxDxH)
Installation depth:	285mm (excl. conn.)
Weight:	5,9Kg

Qi-4200

D4530 4 Channel installation amp 4x200W

Special features:

- 4 Channels @ 1U Housing
- Soft start technology
- Individual bridge control
- SMPS & Class-D amp



Technical Information

Output power
 Stereo 40hm: 4x 200W
 Stereo 80hm: 4x 120W
 Bridge 80hm: 2x 400W

Parameters
 S/N Ratio: >90dB
 Input sensitivity: 0.65V
 Input impedance: 20kOhm Bal./10Kohm unbal.
 Technology: Class-D
 Protection: short circuit, DC, RF, Soft start
 Cooling: Temp controlled fan
 Power supply: SMPS

Connections
 Input: 4x XLR
 Output: 4x Speaker connector
 Power: IEC

Physical
 Dimensions: 388 x 435 x 44 (WxHxD)
 Installation depth: 370 (excl. conn.)
 Weight: 5.8Kg

Electrical
 Input Voltage: 100–240VAC...50/60Hz
 Power consumption: 500W

Qi-4400**D4531** 4 Channel installation amp 4x400W

Special features:

- 4 Channels @ 1U Housing
- Soft start technology
- Individual bridge control
- SMPS & Class-D amp

**Technical Information**

Output power
 Stereo 40hm: 4x 400W
 Stereo 80hm: 4x 250W
 Bridge 80hm: 2x 800W

Parameters
 S/N Ratio: >90dB
 Input sensitivity: 0.7V
 Input impedance: 20kOhm Bal./10Kohm unbal.
 Technology: Class-D
 Protection: short circuit, DC, RF, Soft start
 Cooling: Temp controlled fan
 Power supply: SMPS

Connections
 Input: 4x XLR
 Output: 4x Speaker connector
 Power: IEC

Physical
 Dimensions: 388 x 435 x 44 (WxHxD)
 Installation depth: 370 (excl. conn.)
 Weight: 5.8Kg

Electrical
 Input Voltage: 100-240VAC...50/60Hz
 Power consumption: 875W

Qi-4600**D4532** 4 Channel installation amp 4x600W

Special features:

- 4 Channels @ 1U Housing
- Soft start technology
- Individual bridge control
- SMPS & Class-D amp

**Technical Information**

Output power
Stereo 40hm: 4x 600W
Stereo 80hm: 4x 360W
Bridge 80hm: 2x 1200W

Parameters
S/N Ratio: >90dB
Input sensitivity: 0.775V
Input impedance: 20kOhm Bal./10kOhm unbal.
Technology: Class-D
Protection: short circuit, DC, RF, Soft start
Cooling: Temp controlled fan
Power supply: SMPS

Connections
Input: 4x XLR
Output: 4x Speaker connector
Power: IEC

Physical
Dimensions: 388 x 435 x 44 (WxHxD)
Installation depth: 370 (excl. conn.)
Weight: 6Kg

Electrical
Input Voltage: 100-240VAC...50/60Hz
Power consumption: 1100W

DRX-8

D3630 Passive speaker

Special features:

- 200 Watt
- Lightweight: 9 kg
- Reinforced cabinet
- High driver protection



DRX-10

D3631 Passive speaker

Special features:

- 240 Watt
- Lightweight: 13 kg
- Reinforced cabinet
- High driver protection



Technical Information

System Type:	2-Way Vented Passive Speaker cabinet
Continuous Power:	100 Watts
Peak Power:	200 Watts
Horn Coverage:	50°H x 50°V
Speaker Sensitivity (1W.1m):	90 dB SPL ±3dB
Max. SPL:	113dB at 1m
Frequency Response:	68Hz-20kHz (- 6dB)
Impedance:	8Ω
Crossover Frequency:	3.2KHz
Protection:	High Frequency Protection
Woofers:	8" / 1.5" Voice Coil
Driver:	1" / 1" Voice Coil
Construction:	15mm MDF, glued and reinforced
Paint:	black, scratch resistant
Pole-mount:	ABS 35mm pole-mount
Connectors:	2 x SPK4
Dimensions (HxWxD):	542 x 360 x 352 mm
Weight:	9 kg

Technical Information

System Type:	2-Way Vented Passive Speaker cabinet
Continuous Power:	120 Watts
Peak Power:	240 Watts
Horn Coverage:	50°H x 50°V
Speaker Sensitivity (1W.1m):	95 dB SPL ±3dB
Max. SPL:	118dB at 1m
Frequency Response:	58Hz-20kHz (- 6dB)
Impedance:	8Ω
Crossover Frequency:	3.2KHz
Protection:	High Frequency Protection
Woofers:	10" / 2" Voice Coil
Driver:	1" / 1" Voice Coil
Construction:	15mm MDF, glued and reinforced
Paint:	Black, scratch resistant
Pole-mount:	ABS 35mm pole-mount
Connectors:	2 x SPK4
Dimensions (HxWxD):	550 x 328 x 320 mm
Weight:	13 kg

DRX-12

D3632 Passive speaker

Special features:

- 300 Watt
- Lightweight: 14,5 kg
- Reinforced cabinet
- High driver protection



Technical Information

System Type:	2-Way Vented Passive Speaker cabinet
Continuous Power:	150 Watts
Peak Power:	300 Watts
Horn Coverage:	50°H x 50°V
Speaker Sensitivity (1W.1m):	95.6 dB SPL ±3dB
Max. SPL:	120.3dB at 1m
Frequency Response:	55Hz-20kHz (- 6dB)
Impedance:	8Ω
Crossover Frequency:	2.8KHz
Protection:	High Frequency Protection
Woofers:	12" / 2" Voice Coil
Driver:	1" / 1" Voice Coil
Construction:	15mm MDF, glued and reinforced
Paint:	black, scratch resistant
Pole-mount:	ABS 35mm pole-mount
Connectors:	2 x SPK4
Dimensions (HxWxD):	584 x 353 x 360 mm
Weight:	14,5 kg

DRX-15

D3633 Passive speaker

Special features:

- 400 Watt
- Lightweight: 18 kg
- Reinforced cabinet
- High driver protection



Technical Information

System Type:	2-Way Vented Passive Speaker cabinet
Continuous Power:	200 Watts
Peak Power:	400 Watts
Horn Coverage:	50°H x 50°V
Speaker Sensitivity (1W.1m):	96 dB SPL ±3dB
Max. SPL:	122dB at 1m
Frequency Response:	50Hz-20kHz (- 6dB)
Impedance:	8Ω
Crossover Frequency:	2.8KHz
Protection:	High Frequency Protection
Woofers:	15" / 2" Voice Coil
Driver:	1" / 1" Voice Coil
Construction:	15mm MDF, glued and reinforced
Paint:	Black, scratch resistant
Pole-mount:	ABS 35mm pole-mount
Connectors:	2 x SPK4
Dimensions (HxWxD):	736 x 486 x 522 mm
Weight:	18 kg

DRX-10B

D3643 10" Reflex subwoofer

Special features:

- 500 Watt
- 121 dB
- Compact design
- Lightweight: 15,03 kg



DRX-15B

D3645 15" Reflex subwoofer

Special features:

- 600 Watt
- 124 dB
- Compact design
- Lightweight: 21,3 kg



Technical Information

System Type: 10" Reflex Subwoofer
 Continuous Power: 250W
 Peak Power: 500W
 Transducer Low: 10" Woofer, 2.5" voice coil, with double ventilation
 Max. SPL at 1m: 121dB
 Impedance: 8Ω
 Frequency Response: 55Hz-500Hz (-6dB)
 Connector: 2 x Speakon 1+,1- (2+,2- N/C)
 Construction: 15mm plywood cabinet, glued and reinforced,
 Paint: Black scratch resistant
 Pole-mount: metal 35mm standard pole
 Dimensions (HxWxD): 325 x 465 x 421 mm
 Net Weight: 15,03 kg

Technical Information

System Type: 15" Reflex Subwoofer
 Continuous Power: 300W
 Peak Power: 600W
 Transducer Low: 15" Woofer, 2.5" voice coil, with double ventilation
 Max. SPL at 1m: 124dB
 Impedance: 8Ω
 Frequency Response: 45Hz-400Hz (-6dB)
 Connector: 2 x Speakon 1+,1- (2+,2- N/C)
 Construction: 15mm plywood cabinet, glued and reinforced
 Paint: Black scratch resistant
 Pole-mount: metal 35mm standard pole
 Dimensions (HxWxD): 450 x 580 x 480 mm
 Net Weight: 21,3 kg

DRX-18B**D3646** 18" Reflex subwoofer

Special features:

- 700 Watt
- 126 dB
- Multidimensional design
- 35-400Hz

**Technical Information**

System Type:	15" Reflex Subwoofer
Continuous Power:	300W
Peak Power:	600W
Transducer Low:	15" Woofer, 2.5" voice coil, with double ventilation
Max. SPL at 1m:	124dB
Impedance:	8Ω
Frequency Response:	45Hz-400Hz (-6dB)
Connector:	2 x Speakon 1+,1- (2+,2- N/C)
Construction:	15mm plywood cabinet, glued and reinforced
Paint:	Black scratch resistant
Pole-mount:	metal 35mm standard pole
Dimensions (HxWxD):	450 x 580 x 480 mm
Net Weight:	21,3 kg

DAP Audio's Pure range offers passive and active audio solutions. The passive speakers offer powerful and road-ready solutions for various venues. You can choose between full range speakers from 10" to 15" and add high-power 15" or 18" bass-reflex subwoofers to complete the audio-picture. The full-range 2-way speakers are designed around a 12mm birchwood enclosure while the subwoofers have an 18mm birchwood construction. Each speaker is equipped with speakon connectors which ensure a strong and safe connection every time. The active units present a 10", 12" and 15" full range speaker with a dedicated 18" active subwoofer. With these powerful cabinets you have the right tool for mobile and live sound, applicable for bands, DJs, presentations and more. The on-board Class-D bi-amp amplification offers pure power and keeps these cabinets lightweight and easy to handle. Each unit is equipped with a sophisticated 24bit, 96Khz DSP Processor giving the user the opportunity to select various presets and still be able to tune, store and recall your own sound settings.



Pure-15(A)S castor board
D3730 including wheels



Pure-18(A)S Castor board
D3731 including wheels



Transport Cover for Pure-12(A)
D3780

Transport Cover for Pure-15(A)
D3781

Transport Cover for Pure-18(A)S
D3783



Pure-10 Passive 10" Full Range**D3740** 10" Passive Full-range Cabinet

Special features:

- 500 Watt
- Rotatable 90x60 Horn
- Lightweight: 11,8 Kg
- Scratch resistant painting

Pure-12 Passive 12" Full Range**D3741** 12" Passive Full-range Cabinet

Special features:

- 600 Watt
- 90x45° dispersion for even coverage
- Lightweight: 18,9 Kg
- Scratch resistant painting

**Technical Information**

Weight:	11.8 kg
Dimensions LxWxH:	324x320x500 mm
Housing:	12mm Birch Plywood
Frequency Response (-3dB):	55 - 19.000 Hz
Power RMS:	250 W
SPL max @1m:	124 dB
Connection:	Speakon NL4
Power Peak:	500 W
System:	2-way bass-reflex
Frequency Response (-10dB):	48 - 20.000 Hz
Speaker Low:	10", 8 Ohm, 50 mm Voice Coil
Sensitivity Speaker:	96 dB / W / m
Dispersion Horn (HxV):	90 x 45 °
Recommended HPF:	50 Hz, BW-24
Impedance Speaker:	8 Ω

**Technical Information**

Weight:	18.9 kg
Dimensions LxWxH:	363x355x550 mm
Housing:	12mm Birch Plywood
Frequency Response (-3dB):	50 - 19.000 Hz
Power RMS:	300 W
SPL max @1m:	126 dB
Connection:	Speakon NL4
Power Peak:	600 W
System:	2-way bass-reflex
Frequency Response (-10dB):	45 - 20.000 Hz
Speaker Low:	12", 8 Ohm, 65 mm Voice Coil
Sensitivity Speaker:	97 dB / W / m
Dispersion Horn (HxV):	75 x 50 °
Recommended HPF:	42 Hz, BW-24
Impedance Speaker:	8 Ω

Pure-15 Passive 15" Full Range**D3742** 15" Passive Full-range Cabinet

Special features:

- 800 Watt
- 90x45° dispersion for even coverage
- High sensitivity: 99db/1W/1m
- Scratch resistant painting

**Technical Information**

Weight:	25 kg
Dimensions LxWxH:	415x407x648 mm
Housing:	12mm Birch Plywood
Frequency Response (-3dB):	45 - 19.000 Hz
Power RMS:	400 W
SPL max @1m:	128 dB
Connection:	Speakon NL4
Power Peak:	800 W
System:	2-way bass-reflex
Frequency Response (-10dB):	40 - 20.000 Hz
Speaker Low:	15", 8 Ohm, 65 mm Voice Coil
Sensitivity Speaker:	99 dB / W / m
Dispersion Horn (HxV):	75 x 50 °
Protection:	High Frequency Protection
Impedance Speaker:	8 Ω

Pure-15S Passive 15" Subwoofer**D3743** 15" Passive Subwoofer Cabinet

Special features:

- 1200 Watt
- 15" Die-cast woofer with 4" Voice-coil
- Optimised for best size/weight to SPL output ratio
- M12/35mm pole mount

**Pure-18S Passive 18" Subwoofer****D3744** 18" Passive Subwoofer Cabinet

Special features:

- 1600 Watt
- 18" Die-cast woofer with 4" Voice-coil
- Optimised for best size/weight to SPL output ratio
- M12/35mm pole mount

**Technical Information**

Weight:	31 kg
Dimensions LxWxH:	552x454x570 mm
Housing:	18mm Birch Ply wood
Frequency Response (-3dB):	38 - 160 Hz
Power RMS:	600 W
SPL max @1m:	131 dB
Connection:	Speakon NL4
Power Peak:	1200 W
System:	Bass-reflex Subwoofer
Frequency Response (-10dB):	35 - 200 Hz
Crossover Frequency:	125 Hz, 24 dB/Oct BW

Speaker Low:	15", 4" Voice coil
Sensitivity Speaker:	103 dB / W / m
Recommended HPF:	36 Hz, BW-24
Impedance Speaker:	8 Ω

Technical Information

Weight:	36 kg
Dimensions LxWxH:	602x520x655 mm
Housing:	18mm Birch Plywood
Frequency Response (-3dB):	35 - 160 Hz
Power RMS:	800 W
SPL max @1m:	133 dB
Connection:	Speakon NL4
Power Peak:	1600 W
System:	Bass-reflex Subwoofer
Frequency Response (-10dB):	32 - 200 Hz
Crossover Frequency:	125 Hz, 24 dB/Oct BW

Speaker Low:	18", 4" Voice coil
Sensitivity Speaker:	104 dB / W / m
Recommended HPF:	32 Hz, BW-24
Impedance Speaker:	8 Ω

DRX-8A

D3634 Active speaker

Special features:

- 175 Watt
- Bi-amp
- Lightweight: 13 kg
- Reinforced cabinet



Technical Information

System:	Bi-Amp.
Continuous power:	Low 150W / High 25W Total harmonic distortion
Low-input:	-5dBu 100Hz, out load 40, THD<0.5%
Hi-input:	-8dBu 15kHz, out load 80, THD<0.5%
S/N Ratio:	Low > 80dBu / Hi > 65dBu
Line input Level:	-5dBu ±1 dBu
Input Impedance:	Line 15kΩ input
Indicators:	Power & CLIP
Power supply:	110-120V-60Hz / 220-240V - 50/60Hz
External controls:	Volume / Master Switch / AC select / Ground lift
SPL@1m:	94dB / 119.5 dB (Max.)
Frequency Response:	68Hz - 20kHz - 6dB
Woofers:	8" Ø 203mm - 1.5" Voice Coil
Driver:	1" / 1" Voice Coil
Horn Coverage(H*V):	50° x 50°
Construction:	15mm MDF, glued and reinforced
Paint:	Black, scratch resistant
Pole-mount:	ABS 35mm pole-mount
Connectors:	XLR male & female (link)
Dimensions (HxWxD):	482 x 285 x 293 mm
Weight:	13 kg

DRX-10A

D3635 Active speaker

Special features:

- 195 Watt
- Bi-amp
- Lightweight: 16 kg
- Reinforced cabinet



Technical Information

System:	Bi-Amp.
Continuous power:	Low 170W / High 25W Total harmonic distortion
Low-input:	-5dBu 100Hz, out load 40, THD<0.5%
Hi-input:	-8dBu 15kHz, out load 80, THD<0.5%
S/N Ratio:	Low > 80dBu / Hi > 65dBu
Line input Level:	-5dBu ±1 dBu
Input Impedance:	Line 15kΩ input
Indicators:	Power & CLIP
Power supply:	110-120V-60Hz / 220-240V - 50/60Hz
External controls:	Volume / Master Switch / AC select / Ground lift
SPL@1m:	95dB / 120 dB (Max.)
Frequency Response:	55Hz - 20kHz - 6dB
Woofers:	10" Ø 254mm - 2" Voice Coil
Driver:	1" / 1" Voice Coil
Horn Coverage(H*V):	50° x 50°
Construction:	15mm MDF, glued and reinforced
Paint:	Black, scratch resistant
Pole-mount:	ABS 35mm pole-mount
Connectors:	XLR male & female (link)
Dimensions (HxWxD):	560 x 320 x 332 mm
Weight:	16 kg

DRX-12A**D3636** Active speaker

Special features:

- 230 Watt
- Bi-amp
- Lightweight: 18 kg
- Reinforced cabinet

**Technical Information**

System: Bi-Amp.
 Continuous power: Low 200W / High 30W
 Total harmonic distortion
 Low-input: -5dBu 100Hz, out load 40, THD<0.5%
 Hi-input: -8dBu 15kHz, out load 80, THD<0.5%
 S/N Ratio: Low > 80dBu / Hi > 65dBu
 Line input Level: -5dBu ±1 dBu
 Input Impedance: Line 15kΩ input
 Indicators: Power & CLIP
 Power supply: 110-120V-60Hz / 220-240V - 50/60Hz
 External controls: Volume / Master Switch / AC select / Ground lift
 SPL@1m: 95.6dB / 122.2 dB (Max.)
 Frequency Response: 50Hz - 20kHz - 6dB
 Woofer: 12" Ø 305mm - 2" Voice Coil
 Driver: 1" / 1" Voice Coil
 Horn Coverage(H*V): 50° x 50°
 Construction: 15mm MDF, glued and reinforced
 Paint: Black, scratch resistant
 Pole-mount: ABS 35mm pole-mount
 Connectors: XLR male & female (link)
 Dimensions (HxWxD): 584 x 353 x 360 mm
 Weight: 18 kg

DRX-15A**D3637** Active speaker

Special features:

- 250 Watt
- Bi-amp
- Lightweight: 22 kg
- Reinforced cabinet

**Technical Information**

System: Bi-Amp.
 Continuous power: Low 220W / High 30W
 Total harmonic distortion
 Low-input: -5dBu 100Hz, out load 40, THD<0.5%
 Hi-input: -8dBu 15kHz, out load 80, THD<0.5%
 S/N Ratio: Low > 80dBu / Hi > 65dBu
 Line input Level: -5dBu ±1 dBu
 Input Impedance: Line 15kΩ input
 Indicators: Power & CLIP
 Power supply: 110-120V-60Hz / 220-240V - 50/60Hz
 External controls: Volume / Master Switch / AC select / Ground lift
 SPL@1m: 95.5dB / 123.5 dB (Max.)
 Frequency Response: 50Hz - 20kHz - 6dB
 Woofer: 15" Ø 381mm - 2" Voice Coil
 Driver: 1" / 1" Voice Coil
 Horn Coverage(H*V): 50° x 50°
 Construction: 15mm MDF, glued and reinforced
 Paint: Black, scratch resistant
 Pole-mount: ABS 35mm pole-mount
 Connectors: XLR male & female (link)
 Dimensions (HxWxD): 736 x 486 x 522 mm
 Weight: 22 kg

DRX-10BA

D3640 Active subwoofer

Special features:

- 600 Watt
- High Pass output
- Compact design
- Lightweight: 15,46 kg



DRX-12BA

D3641 Active subwoofer

Special features:

- 600 Watt
- High Pass output
- Compact design
- Lightweight: 18,6 kg



Technical Information

System Type: Active subwoofer Speaker Cabinet
 Continuous Power: 300W
 Program Power: 600W
 Frequency Response: 50Hz-120Hz(- 6dB)
 SPL (1W1M): 94 dB /121. 8dB Max
 Woofer: 10" / 2.5" Voice Coil with ventilation
 Active Crossover: HPF 80Hz, analog processor
 Input Connectors: XLR Combo Female Left, XLR female right, 2x Male link L/R
 Output connectors: 2x XLR Male L/R (15kOhms)
 Input Level: Left / Right Line Input OdBu
 External Connectors: Volume /Power / Ground lift / Phase / HPF bypass
 Indicators: Power / Clip Limiter
 Power Supply: 110-120V/220-240V 50/60Hz
 Construction: 15mm Plywood, glued and reinforced
 Paint: Black scratch resistant
 Pole-mount: Metal 35mm standard pole-mount
 Dimension (HxWxD): 325 x 465 x 421 mm
 Net weight: 15,46 kg

Technical Information

System Type: Active subwoofer Speaker Cabinet
 Continuous Power: 300W
 Program Power: 600W
 Frequency Response: 47Hz-125Hz(- 6dB)
 SPL (1W1M): 96 dB /123. 8dB Max
 Woofer: 12" / 2.5" Voice Coil with ventilation
 Active Crossover: HPF 80Hz, analog processor
 Input Connectors: XLR Combo Female Left, XLR female right, 2x Male link L/R
 Output connectors: 2x XLR Male L/R (15kOhms)
 Input Level: Left / Right Line Input OdBu
 External Connectors: Volume /Power / Ground lift / Phase / HPF bypass
 Indicators: Power / Clip Limiter
 Power Supply: 110-120V/220-240V 50/60Hz
 Construction: 15mm Plywood, glued and reinforced
 Paint: Black scratch resistant
 Pole-mount: Metal 35mm standard pole-mount
 Dimension (HxWxD): 370 x 530 x 480 mm
 Net weight: 18,6 kg

DRX-15BA**D3642** Active subwoofer

Special features:

- 600 Watt
- High Pass output
- Compact design
- Lightweight: 22,4 kg

**Technical Information**

System Type: Active subwoofer Speaker Cabinet
 Continuous Power: 300W
 Program Power: 600W
 Frequency Response: 45Hz-125Hz(- 6dB)
 SPL (1W1M): 97 dB /124, 8dB Max
 Woofer: 15" / 2.5" Voice Coil with ventilation
 Active Crossover: HPF 80Hz, analog processor
 Input Connectors: XLR Combo Female Left, XLR female right, 2x Male link L/R
 Output connectors: 2x XLR Male L/R (15kOhms)
 Input Level: Left / Right Line Input OdBu
 External Connectors: Volume /Power / Ground lift / Phase /HPF bypass
 Indicators: Power / Clip Limiter
 Power Supply: 110-120V/220-240V 50/60Hz
 Construction: 15mm Plywood, glued and reinforced
 Paint: Black scratch resistant
 Pole-mount: Metal 35mm standard pole-mount
 Dimension (HxWxD): 450 x 580 x 480 mm
 Net weight: 22,4 kg

DRX-18BA**D3647** Active subwoofer

Special features:

- 700 Watt
- High Pass output
- Multidimensional design
- 35 - 120 Hz

**Technical Information**

System Type: Active subwoofer Speaker Cabinet
 Continuous Power: 350W
 Program Power: 700W
 Frequency Response: 35Hz-120Hz(- 6dB)
 SPL (1W1M): 98 dB /126dB Max
 Woofer: 18" / 3" Voice Coil with ventilation
 Active Crossover: HPF 80Hz, analog processor
 Input Connectors: XLR Combo Female Left, XLR female right, 2x Male link L/R
 Output connectors: 2x XLR Male L/R (15kOhms)
 Input Level: Left / Right Line Input OdBu
 External Connectors: Volume /Power / Ground lift / Phase /HPF bypass
 Indicators: Power / Clip Limiter
 Power Supply: 110-120V/220-240V 50/60Hz
 Construction: 18mm Plywood, glued and reinforced
 Paint: Black scratch resistant
 Pole-mount: 2x Metal 35mm standard pole-mount
 Dimension (HxWxD): 535 x 661 x 515 mm
 Net weight: 30,3 kg

Splash 8A

D3588 8" Active plastic vented PA speaker system

Special features:

- compact, lightweight and robust ABS housing
- high sound pressure
- universally applicable



Technical Information

System: Bi-Amp 2-Way Active Speaker
 Continuous power: Low 90W / High 30W
 Peak power: 240W
 Horn Coverage: 90° H x 45° V
 Indicators: Power & Signal/Limit
 Power supply: 100-240VAC, 50/60Hz
 External controls: Volume
 SPL@1m: 113 dB (Max.)
 Frequency Response: 68Hz - 20kHz (- 6dB)
 Crossover Frequency: 2200Hz
 Woofer: 8" – 1,5" Voice Coil
 Driver: 1" Ferrite driver, 1" Voice Coil
 Construction: Plastic Cabinet, Trapezoidal & Monitor Shape, reinforced Metal Grill, Rubber feet, 1 handle on top
 Mounting: 35mm pole-mount
 Connectors: Combo XLR male & female (link)
 Dimensions (HxWxD): 420 x 270 x 240mm
 Weight: 5,53 Kg

Splash 10A

D3589 10" Active plastic vented PA speaker system

Special features:

- compact, lightweight and robust ABS housing
- high sound pressure
- universally applicable



Technical Information

System: Bi-Amp 2-Way Active Speaker
 Continuous power: Low 90W / High 30W
 Peak power: 240W
 Horn Coverage: 90° H x 45° V
 Indicators: Power & Signal/Limit
 Power supply: 100-240VAC, 50/60Hz
 External controls: Volume
 SPL@1m: 116 dB (Max.)
 Frequency Response: 65Hz - 20kHz (- 6dB)
 Crossover Frequency: 2800Hz
 Woofer: 10" – 1,5" Voice Coil
 Driver: 1" Ferrite driver, 1" Voice Coil
 Construction: Plastic Cabinet, Trapezoidal & Monitor Shape, reinforced Metal Grill, Rubber feet, 1 handle on top
 Mounting: 35mm pole-mount
 Connectors: Combo XLR male & female (link)
 Dimensions (HxWxD): 460 x 285 x 265mm
 Weight: 6,92 Kg

Splash 12A**D3590** 12" Active plastic vented PA speaker system

Special features:

- compact, lightweight and robust ABS housing
- switchable Contour function
- high sound pressure
- universally applicable

**Splash 15A****D3591** 15" Active plastic vented PA speaker system

Special features:

- compact, lightweight and robust ABS housing
- switchable Contour function
- high sound pressure
- universally applicable

**Technical Information**

System:	Bi-Amp 2-Way Active Speaker
Continuous power:	Low 150W / High 50W
Peak power:	400W
Horn Coverage:	90° H x 45° V
S/N Ratio:	Low > 80dBu / Hi > 65dBu
Indicators:	Power & Signal/Limit
Power supply:	110-120V-60Hz / 220-240V - 50/60Hz
External controls:	Volume / Sensitivity Switch / Contour Switch / Ground lift
SPL@1m:	119 dB (Max.)
Frequency Response:	55Hz - 20kHz (- 6dB)
Crossover Frequency:	3500Hz
Woofer:	12" Ø 305mm - 2" Voice Coil
Driver:	1" Neodymium driver, 1" Voice Coil
Construction:	Plastic Cabinet, Trapezoidal & Monitor Shape, reinforced Metal Grill, Rubber feet, 3 ergonomic handles
Mounting:	35mm pole-mount
Connectors:	Combo XLR male & female (link)
Dimensions (HxWxD):	607 x 380 x 337mm
Weight:	13,75 Kg

Technical Information

System:	Bi-Amp 2-Way Active Speaker
Continuous power:	Low 150W / High 50W
Peak power:	400W
Horn Coverage:	90° H x 45° V
S/N Ratio:	Low > 80dBu / Hi > 65dBu
Indicators:	Power & Signal/Limit
Power supply:	110-120V-60Hz / 220-240V - 50/60Hz
External controls:	Volume / Sensitivity Switch / Contour Switch / Ground lift
SPL@1m:	121 dB (Max.)
Frequency Response:	50Hz - 20kHz (- 6dB)
Crossover Frequency:	3500Hz
Woofer:	15" Ø 381mm - 2" Voice Coil
Driver:	1" Neodymium driver, 1" Voice Coil
Construction:	Plastic Cabinet, Trapezoidal & Monitor Shape, reinforced Metal Grill, Rubber feet, 3 ergonomic handles
Mounting:	35mm pole-mount
Connectors:	Combo XLR male & female (link)
Dimensions (HxWxD):	625 x 386 x 366mm
Weight:	14,86 Kg

M10**D3660** Active 415W Bi-Amp 10" Monitor

Special features:

- Compact and lightweight
- Powerful 415W Class D amplifier
- Easy daisy chain with XLR and Powercon
- Stage proof design with rugged metal protective grill

**Technical Information**

System:	Active Bi-Amp 10" Monitor
Output Power:	Class D, 350W LF power, 65W HF power
Maximum SPL @1M:	123dB/ 126dB Peak
Frequency resp. (-10dB):	70Hz – 20kHz
Transducer Low:	10" Woofer, 2.56" Voice Coil
Transducer High:	1" Neodymium Compression Driver, 1" Voice Coil
Nom Dispersion (HxV):	70° x 70° (-6dB)
Audio Input:	XLR/ Jack Combo balanced
Link Output:	XLR-male balanced
External Controls:	Mic/Line switch, EQ Preset switch (Monitor/FOH), Ground Lift switch, Volume control, Signal-Limiter indication LED, Power Switch with green LED
Electronic Protection:	Thermal/ Overload/ Limiter/ Compressor
Mounting:	Floor and Integrated 35mm Pole Socket
Power Supply:	AC 100V–240V, 50 Hz/60Hz (SPSU)
Power Input:	Neutrik Powercon
Housing:	Wedge design 15 mm MDF with Scratch Resistant Black Paint
Dimensions (HxWxD):	363 x 351 x 323 mm
Net Weight:	11,4 kg

M12**D3661** Active 415W Bi-Amp 12" Monitor

Special features:

- Compact and lightweight
- Powerful 415W Class D amplifier
- Easy daisy chain with XLR and Powercon
- Stage proof design with rugged metal protective grill

**Technical Information**

System:	Active Bi-Amp 12" Monitor
Output Power:	Class D, 350W LF power, 65W HF power
Maximum SPL @1M:	124dB/ 127dB Peak
Frequency resp. (-10dB):	65Hz – 20kHz
Transducer Low:	12" Woofer, 2.56" Voice Coil
Transducer High:	1" Neodymium Compression Driver, 1" Voice Coil
Nom Dispersion (HxV):	70° x 70° (-6dB)
Audio Input:	XLR/ Jack Combo balanced
Link Output:	XLR-male balanced
External Controls:	Mic/Line switch, EQ Preset switch (Monitor/FOH), Ground Lift switch, Volume control, Signal-Limiter indication LED, Power Switch with green LED
Electronic Protection:	Thermal/ Overload/ Limiter/ Compressor
Mounting:	Floor and Integrated 35mm Pole Socket
Power Supply:	AC 100V–240V, 50 Hz/60Hz (SPSU)
Power Input:	Neutrik Powercon
Housing:	Wedge design 15 mm MDF with Scratch Resistant Black Paint
Dimensions (HxWxD):	393 x 391 x 375 mm
Net Weight:	14,4 kg

M15**D3662** Active 415W Bi-Amp 15" Monitor

Special features:

- Compact and lightweight
- Powerful 415W Class D amplifier
- Easy daisy chain with XLR and Powercon
- Stage proof design with rugged metal protective grill

**Technical Information**

System:	Active Bi-Amp 15" Monitor
Output Power:	Class D, 350W LF power, 65W HF power
Maximum SPL @1M:	125dB/ 128dB Peak
Frequency resp. (-10dB):	60Hz – 20kHz
Transducer Low:	15" Woofer, 2,56" Voice Coil
Transducer High:	1" Neodymium Compression Driver, 1" Voice Coil
Nom Dispersion (HxV):	70° x 70° (-6dB)
Audio Input:	XLR/ Jack Combo balanced
Link Output:	XLR-male balanced
External Controls:	Mic/Line switch, EQ Preset switch (Monitor/FOH), Ground Lift switch, Volume control, Signal-Limiter indication LED, Power Switch with green LED
Electronic Protection:	Thermal/ Overload/ Limiter/ Compressor
Mounting:	Floor and Integrated 35mm Pole Socket
Power Supply:	AC 100V–240V, 50 Hz/60Hz (SPSU)
Power Input:	Neutrik Powercon
Housing:	Wedge design 15 mm MDF with Scratch Resistant Black Paint
Dimensions (HxWxD):	493 x 460 x 399 mm
Net Weight:	18,4 kg

Case for 2x M10 monitor**D7318****Case for 2x M12 monitor****D7319****Case for 2x M15 monitor****D7320**

Welcome to Odin territory

Since the introduction in 2016 the active line array from Dap Audio's Odin Audio Systems surely made a name for itself. Odin took to the roads and could be found almost everywhere. Present at the leading events in Europe, having its own UK Summer Tour, various Pop up-shows and being put to work at numerous concerts, gigs and festivals. Due to Odin's versatility it can be used very well at small to medium sized venues. The user-friendly Celestion-driven system consisting of the T-8A Satellite, S-18A Subwoofer and S-218A 2x18" Ultra sub is very easy to setup. The three point suspension system, 9 predefined presets including 1 user-definable preset and specially designed enclosures guarantee straightforward handling with crisp, clear sounds.

Developed in the Netherlands, Odin was designed keeping in mind the requirements of the professional users but also catering to the needs of less experienced users. To make sure that everybody can arrange the perfect setup for their venue, you will have free access to the "EASE Focus" software with which you can create a fitting setup for your venue every time. The best possible acoustic resonance in the low/mid and mid frequencies is obtained by using the specially constructed waveguide, resulting in an optimal sound dispersal. The biggest member of the Odin family, the S-218A 2x18" Ultrasub is living proof of the fact that an extreme low output can be obtained through a strong construction. This line array system delivers, everywhere!





powered by
CELESTION



Waveguide

The Odin T-8A Satellite not only incorporates Celestion speakers and DSP optimized amplification. To make sure that the Satellite delivers, a specially designed and dedicated Waveguide has been engineered which produces the best possible sound dispersion. The Waveguide maximizes the efficiency of the speaker because it generates a more equal dispersion of frequencies and amplifies the output during the process as well.



CL-4, Odin Editor

The Odin T-8A Satellite, S-18A Subwoofer and S-218A Ultra Subwoofer are all equipped with a DSP preset selector. Each unit has its own dedicated, fixed settings for various live gigs or events. This feature has been added to give all users the possibility of using the line array system the way it is meant to be used. For professional users who need more specific settings, one editable preset has been added. With the CL-4 Connect network interface combined with the free downloadable Windows-software Odin Editor this preset can be fine-tuned completely. Simply install the Odin Editor software and using a Wifi-connection, the CL-4 interface communicates between your personal computer and the Odin line array system.



Odin SF-12A**D3930** 12" Side Fill Cabinet

Special features:

- Celestion driven 2-way full range speaker
- Roadproof design and water resistant coating
- Integrated DSP processor
- Active bi-amp system
- Neutrik PowerCON Connector In & Out

**Technical Information**

System:	2-way full range cabinet
AMP Power:	800 W Continuous, Bi-AMP(Class D-350 W LF, Class AB-130 W HF),
Speaker:	3200W Peak 1" Celestion Compression Driver, 1.75" Voice Coil, 60W RMS, 240W Peak 12" Celestion Woofer, Water Resistant Coating, 3" Voice Coil, 350W-RMS/1400W-Peak 60 Hz - 19 kHz 128dB 1,6 KHz
Frequency Response (+/-3dB):	80° Horizontal / 60° Vertical (Rotatable Horn)
MAX SPL @ 1m:	Passive Cooling + forced cooling inside
Crossover frequency:	XLR In- and output
Dispersion(-6dB):	80° Horizontal / 60° Vertical (Rotatable Horn)
Cooling:	Passive Cooling + forced cooling inside
Audio Connector:	RJ45 Date In & Link Cascading Connector
Data Connector:	9 Fixed Preset + 1 Editable preset, Power Switch with LED indicators for Clip / SIG / PROT
External Controls:	32 bit , 24bit/48kHz Audio conversion AD/DA Thermal / Convection-Fan / Overload / Digital Limiter / Compressor
DSP Processor:	Neutrik PowerCON Connector In & Out
Electronic Protections:	
Mains Connector:	

Power Supply:
Power Consumption:
Enclosure Construction:

Mounting:
Dimensions (HxWxL):
Net Weight:
Optional Accessories:

100 ~ 240VAC, 50Hz/60Hz
700W
15mm Birch Plywood, Resistant Black Paint, 1.5T Metal Grill with Foam, One Handle on Each Side, Water Resistant Coating
Polemount Adaptor
646 x 396 x 379 mm
26 Kg / 57.3 lbs
DSP Network Interface CL-4



Odin SF-15A**D3931** 15" Side Fill Cabinet

Special features:

- Celestion driven 2-way full range speaker
- Roadproof design and water resistant coating
- Integrated DSP processor
- Neutrik PowerCON Connector In & Out
- Active bi-amp system

**Technical Information**

System: 2-way full range cabinet
 AMP Power: 800 W Continuous, Bi-AMP(Class D-350 W LF, Class AB-130 W HF), 3200W Peak
 Speaker: 1" Celestion Compression Driver, 1.75" Voice Coil, 60W RMS, 240W Peak
 15" Celestion Woofer, Water Resistant Coating, 3" Voice Coil, 350W-RMS/1400W-Peak
 Frequency Response (+/-3dB): 50 Hz - 19 kHz
 MAX SPL @ 1m: 129dB
 Crossover frequency: 1,6 KHz
 Dispersion(-6dB): 80° Horizontal / 60° Vertical (Rotatable Horn)
 Cooling: Passive Cooling + forced cooling inside
 Audio Connector: XLR In- and output
 Data Connector: RJ45 Date In & Link Cascading Connector
 External Controls: 9 Fixed Preset + 1 Editable preset, Power Switch with LED indicators for Clip / SIG / PROT
 DSP Processor: 32 bit , 24bit/48kHz Audio conversion AD/DA
 Electronic Protections: Thermal / Convection-Fan / Overload / Digital Limiter / Compressor
 Mains Connector: Neutrik PowerCON Connector In & Out

Power Supply: 100 ~ 240VAC, 50Hz/60Hz
 Power Consumption: 700W
 Enclosure Construction: 15mm Birch Plywood, Resistant Black Paint, 1.5T Metal Grill with Foam, One Handle on Each Side, Water Resistant Coating

Mounting: Polemount Adaptor
 Dimensions (HxWxL): 711 x 439 x 395 mm
 Net Weight: 28 Kg / 61.7 lbs
 Optional Accessories: DSP Network Interface

Odin T-8A**D3900** Line-Array Satellite

Special features:

- Celestion components inside
- Waveguide for optimized low-mid frequency directivity
- Single user 3-point suspension system
- DSP optimized Amplification ensures highest reliability
- Multivoltage Power supply with active PFC

**Technical Information**

System:	2-way full range, Active Array Element
AMP Power:	800 W Continuous, Bi-AMP (Class D-650 W LF, Class AB-150 W HF), 3200W Peak
Speaker:	2x 1" Celestion Neodymium Compression Driver, 1.75" Voice Coil, 80W RMS, 320W Peak 2x 8" Celestion Neodymium MID Woofer, Water Resistant Coating, 2" Voice Coil, 400W-RMS/1600W-Peak 80 Hz - 19 kHz
Frequency Response (+/-3dB):	129dB
MAX SPL @ 1m:	1.6 KHz
Crossover frequency:	100° Horizontal / 10° Vertical
Dispersion(-6dB):	Passive Cooling + forced cooling inside
Cooling:	XLR In- and output
Audio Connector:	RJ45 Date In & Link Cascading Connector
Data Connector:	9 Fixed Preset + 1 Editable preset, Power Switch with LED indicators for Clip / SIG / PROT
External Controls:	32 bit , 24bit/48kHz Audio conversion AD/DA Thermal / Convection-Fan / Overload / Digital Limiter / Compressor
DSP Processor:	Neutrik PowerCON Connector In & Out
Electronic Protections:	
Mains Connector:	

Power Supply:	100 ~ 240VAC, 50Hz/60Hz
Power Consumption:	1100W
Enclosure Construction:	18mm Birch Plywood, Resistant Black Paint, 1.5T Metal Grill with Foam, Two Handles on Each Side, Water Resistant Coating
Mounting:	3-point Suspension, Horizontal Trapezoid 2 x 6.5°
Dimensions (LxWxH):	635 x 468 x 300 mm
Net Weight:	22.5 Kg / 49.5 lbs
Optional Accessories:	Flybar Polemount Adaptor Ground stacking feet Flying Pin DSP Network Interface



Odin S-18A

D3901 Line-Array Subwoofer

Special features:

- Celestion 18" woofer inside
- High Power 1.5KW Class-D Amplifier
- DSP optimized Amplification ensures highest reliability
- Multivoltage Power supply with active PFC



Technical Information

System: Active Subwoofer, Active Array Element
 AMP Power: 1500 W Continuous Class D, 6000W Peak
 Speaker: 18" (450mm) Celestion, Ferrite Magnet Subwoofer, 4" Voice Coil, 1200W RMS, Water Resistant Coating
 Frequency Response (+/-3dB): 41 Hz - 110 Hz
 MAX SPL @ 1m: 136dB
 Directivity: Omnidirectional
 Cooling: Passive Cooling + forced cooling inside
 Audio Connector: XLR In- and output
 Data Connector: RJ45 Date In & Link Cascading Connector
 External Controls: 9 Fixed Preset + 1 Editable preset, Power Switch with LED indicators for Clip / SIG / PROT
 DSP Processor: 32 bit , 24bit/48kHz Audio conversion AD/DA
 Electronic Protections: Thermal / Convection-Fan / Overload / Digital Limiter / Compressor
 Mains Connector: Neutrik PowerCON Connector In & Out
 Power Supply: 100 ~ 240VAC, 50Hz/60Hz
 Power Consumption: 2000W
 Enclosure Construction: 18mm Birch Plywood, Resistant Black Paint, 1.5T Metal Grill with Foam, Rubber Feet, Two Handles on Each Side, Water Resistant Coating

Mounting: M20 Metal Polemount, 4-point Suspension
 Dimensions (LxWxH): 700 x 635 x 665mm
 Net Weight: 58.5 Kg / 128.7 lbs
 Optional Accessories:

Flybar
 Polemount Adaptor
 Ground stacking feet
 Flying Pin
 DSP Network Interface



Odin S-218A**D3902** Ultra Sub

Special features:

- Celestion 2x18" woofers inside, 5" Voice coil
- High Power 4KW Class-D Amplifier
- DSP optimized Amplification ensures highest reliability
- Frequency Response (-6dB) 28 Hz-110 Hz

**Technical Information**

System: Active Subwoofer
 AMP Power: 4000 W Continuous Class D, 10000W Peak
 Speaker: 2x18" (450mm) Celestion, Ferrite Magnet Subwoofer, 5" Voice Coil, 1600W RMS, Water Resistant Coating
 Frequency Response (-6dB): 28 Hz - 110 Hz
 MAX SPL @ 1m: 141dB
 Directivity: Omnidirectional
 Cooling: Passive Cooling + forced cooling inside
 Audio Connector: XLR In- and output
 Data Connector: RJ45 Data In & Link Cascading Connector
 External Controls: 9 Fixed Preset + 1 Editable preset, Power Switch with LED indicators for Clip / SIG / PROT
 DSP Processor: 32 bit , 24bit/48kHz Audio conversion AD/DA
 Electronic Protections: Thermal / Convection-Fan / Overload / Digital Limiter / Compressor
 Mains Connector: Neutrik PowerCON Connector In & Out
 Power Supply: 100 ~ 240VAC, 50Hz/60Hz
 Power Consumption: 4000W
 Enclosure Construction: 18mm Birch Plywood, Resistant Black Paint, 1.5T Metal Grill with Foam, Rubber Feet, Two Handles on Each Side, Water Resistant Coating

Mounting: none
 Dimensions (LxWxH): 1400 x 635 x 665mm
 Net Weight: 115.5 Kg / 254.6 lbs

Odin Satellite Set

D3900SET01

Special features:

- CELESTION components inside
- Waveguide for optimized low-mid frequency directivity
- DSP optimized Amplification ensures highest reliability
- 9 Audio application presets
- Multivoltage Power supply with active PFC



Odin Stack set

D3900SET02



Technical Information

The Odin Satellite set consists of:

- 4pcs Odin T-8A Line array satellites
- 2pcs Odin S-18A Line array subs
- 2pcs Odin PM-01 polemount adapter
- 2pcs Distance tube M20
- 1pcs Odin case for 4x T-8A
- 2pcs Transportcover for Odin S-18A
- 4pcs Blue wheel swivel 100mm
- 4pcs Blue wheel swivel & brake 100mm
- 1pcs Daily case 22
- 2pcs 10.0mtr powerCON input cable
- 2pcs 1.5mtr powerCON Link cable
- 2pcs 3.0mtr powerCON Link cable
- 2pcs 1,5mtr Neutrik XLR-XX M/F cable
- 2pcs 3.0mtr Neutrik XLR-XX M/F cable
- 2pcs 10.0mtr Neutrik XLR-XX M/F cable

Technical Information

The Odin Stack set consists of:

- 8pcs Odin T-8A Line array satellites
- 4pcs Odin S-18A Line array subs
- 2pcs Odin case for 4x T-8A
- 2pcs Odin flybar FB-02
- 2pcs Odin CA-01 Connection adapter
- 1pcs Odin CL-4 Connect
- 8pcs 1.5mtr Powercon powercable m/f
- 4pcs 10.0mtr Blue power connector/schuko
- 2pcs Transportcover for Odin S-18A
- 2pcs Odin castorboard
- 1pcs Daily case 47
- 10pcs 1,5mtr Neutrik XLR-XX M/F cable
- 2pcs 10.0mtr Neutrik XLR-XX M/F cable
- 2pcs 15,0mtr FL55 Cat-5 cable
- 10pcs 1.5mtr Cat 5E cable with Neutrik Ethercon

Odin Array set

D3900SET03

Special features:

- CELESTION components inside
- Waveguide for optimized low-mid frequency directivity
- DSP optimized Amplification ensures highest reliability
- 9 Audio application presets
- Multivoltage Power supply with active PFC



Technical Information

The Odin Array set consists of:

- 12pcs Odin T-8A Line array satellites
- 8pcs Odin S-18A Line array subs
- 3pcs Odin case for 4x T-8A
- 2pcs Odin flybar FB-01
- 2pcs Odin flybar FB-02
- 2pcs Odin CA-01 Connection adapter
- 1pcs Odin CL-4 Connect
- 16pcs 1.5mtr Powercon powercable m/f
- 4pcs 10.0mtr Blue power connector/schuko
- 4pcs Transportcover for 2x Odin S-18A
- 4pcs Odin castorboard
- 1pcs Daily case 47
- 16pcs 1.5mtr Neutrik XLR-XX M/F cable
- 4pcs 10.0mtr Neutrik XLR-XX M/F cable
- 2pcs 10.0mtr FL55 Cat-5 cable
- 2pcs 15.0mtr FL55 Cat-5 cable
- 16pcs 1.5mtr Cat 5E cable with Neutrik Ethercon
- 2pcs MAT-350 Line array tower
- 2pcs Riggingbar 3 for MAT-series



Odin FB-01
D3910 Flybar



Odin FB-02
D3911 Flybar/Stackframe



Odin PM-01 Polemount Adapter
D3912 Accessories for T-8A



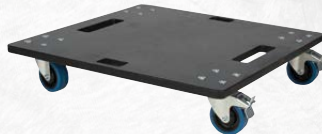
Odin CA-01 +6° Connecting Adapter
D3913 Accessories for T-8A



Odin AF-01 Adjustable Foot
D3914 Accessories for FB-01



Castor Board
D3918 For 2x S-18A or 1x S-218A



Odin CL-4 Connect
D3915 Network interface



Rain/Transportcover for Odin T-8A
D3922 for 6 pcs array



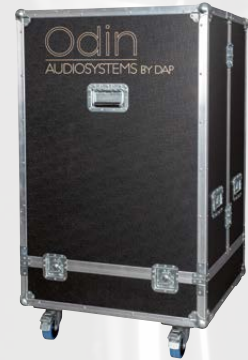
Case for 2x Odin SF-12A
D7226 Premium Line



Pure Club 12
D3760 12" Sub + 6" Tops Active Speaker Set
without DSP



Case for 4x Odin T-8A
D7224 Premium Line



Rain/Transportcover for 2x S-18A
D3923



Transportcover for Odin S-18A
D3920

Transportcover for 2x Odin S-18A
D3921

Transportcover for Odin S-218A
D3924



Pure-10A 10" Full Range Top Cabinet with DSP

D3719 10" Active Cabinet with DSP

Special features:

- 600W RMS
- Active speaker system
- 24-bit DSP Processor with LCD-display
- 2ch Input mixer
- 35mm pole mount



Pure-12A

D3721 12" Active Cabinet with DSP

Special features:

- 600W RMS
- Active speaker system
- 24-bit DSP Processor with LCD-display
- 2ch Input mixer
- 35mm pole mount



Technical Information

Power Consumption:	600 W
Weight:	13 kg
Dimensions LxWxH:	324x320x500 mm
Housing:	12mm Birch Plywood
Power RMS:	600 W
Cooling:	Forced
SPL max @1m:	125 dB
Connection Audio:	XLR In/Out
System:	2-way Active Bass-reflex
Frequency Response (-6dB):	52 - 20000 Hz
Impedance Input:	10 K Ω
Input Line:	2
Speaker Low:	10", 8 Ohm, 50 mm Voice Coil
Dispersion Horn (HxV):	90 x 60 °

Technical Information

System:	2-way active full range
AMP Power:	600 W Continuous, Bi-AMP(Class D 500 W LF, 100 W HF), 1200W Peak
Speaker:	12" Woofer and 1" Compression driver
Frequency Response (+/-6dB):	45 Hz - 20 kHz
MAX SPL @ 1m:	126dB
Crossover frequency:	1,7 KHz
Dispersion(-6dB):	75° Horizontal / 50° Vertical
Cooling:	forced cooling inside
Audio Connector:	XLR In- and output / 3,5mm mini-jack Aux in
External Controls:	Controllable DSP trough LCD interface
DSP Processor:	24 bit, 24bit/96kHz Audio conversion AD/DA
Electronic Protections:	Thermal / Convection-Fan / Overload / Digital Limiter / Compressor
Mains Connector:	ProPower Connector In & Out
Power Supply:	120/230VAC, 50Hz/60Hz
Power Consumption:	Max 600W
Enclosure Construction:	12mm Birch Plywood, Water Resistant coating, 1,5mm metal grill with foam
Mounting:	35mm pole mount
Dimensions (HxWxD):	550 x 365 x 356 mm
Net Weight:	23 Kg / 50,7 lbs

Pure-15A**D3720** 15" Active Cabinet with DSP

Special features:

- 600W RMS
- Active speaker system
- 24-bit DSP Processor with LCD-display
- 2ch Input mixer
- 35mm pole mount



Technical Information

System:
AMP Power:

2-way active full range
600 W Continuous, Bi-AMP(Class D 500 W LF, 100 W HF),
1200W Peak

Speaker:
Frequency Response (+/-6dB):
MAX SPL @ 1m:

15" Woofer and 1" Compression driver
40 Hz - 20 kHz
128dB

Crossover frequency:
Dispersion(-6dB):
Cooling:

1,7 KHz
75° Horizontal / 50° Vertical
forced cooling inside

Audio Connector:
External Controls:

XLR In- and output / 3,5mm mini-jack Aux in
Controllable DSP trough LCD interface

DSP Processor:

24 bit, 24bit/96kHz Audio conversion AD/DA

Electronic Protections:

Thermal / Convection-Fan / Overload / Digital Limiter / Compressor

Mains Connector:

ProPower Connector In & Out

Power Supply:

120/230VAC, 50Hz/60Hz

Power Consumption:

Max 600W

Enclosure Construction:

15mm Birch Plywood, Water Resistant coating,
1,5mm metal grill with foam

Mounting:

35mm pole mount

Dimensions (HxWxD):

640 x 426 x 410 mm

Net Weight:

29 Kg / 64 lbs



Pure-15AS 15" Subwoofer with DSP**D3726** 15" Active Subwoofer with DSP

Special features:

- 800W RMS, 1600W Class-D
- Active speaker system
- 24-bit DSP Processor with LCD-display
- 2ch Input mixer
- M12/35mm pole mount

**Technical Information**

Power Consumption:	600 W
Weight:	33 kg
Dimensions LxWxH:	552x454x570 mm
Housing:	18mm Birch Plywood
Housing Colour:	Black scratch resistant
Power RMS:	800 W
Cooling:	Forced
SPL max @1m:	128 dB
Connection Audio:	XLR In/Out
System:	Active Bass-reflex subwoofer
Frequency Response (-6dB):	38 - 150 Hz
Impedance Input:	10 K Ω
Input Line:	2
Speaker Low:	15", 4" Voice coil

Pure-18AS**D3725** 18" Active Subwoofer with DSP

Special features:

- 800W RMS, 1600W Class-D
- Active speaker system
- 24-bit DSP Processor with LCD-display
- 2ch Input mixer
- M12/35mm pole mount

**Technical Information**

System: Active subwoofer
 AMP Power: 800 W Continuous Class D, 1600W Peak
 Speaker: 18" Heavy duty Woofer with 4" Voicecoil
 Frequency Response (+/-6dB): 35 Hz - 150 Hz (High-pass dependant)
 MAX SPL @ 1m: 129dB
 Crossover frequency: DSP programmable
 Dispersion(-6dB): 360° Horizontal / 180° Vertical
 Cooling: forced cooling inside
 Audio Connector: XLR In- and output
 External Controls: Controllable DSP through LCD interface

DSP Processor: 24 bit, 24bit/96kHz Audio conversion AD/DA
 Electronic Protections: Thermal / Convection-Fan / Overload / Digital Limiter / Compressor
 Mains Connector: ProPower Connector In & Out
 Power Supply: 120/230VAC, 50Hz/60Hz
 Power Consumption: Max 600W
 Enclosure Construction: 18mm Birch Plywood, Water Resistant coating, 1,5mm metal grill with foam
 Mounting: 35mm/M12 pole mount
 Dimensions (HxWxD): 650 x 520 x 600 mm
 Net Weight: 33 Kg / 72,7 lbs

DSP Processor: 24 bit, 24bit/96kHz Audio conversion AD/DA
 Electronic Protections: Thermal / Convection-Fan / Overload / Digital Limiter / Compressor
 Mains Connector: ProPower Connector In & Out
 Power Supply: 120/230VAC, 50Hz/60Hz
 Power Consumption: Max 600W
 Enclosure Construction: 18mm Birch Plywood, Water Resistant coating, 1,5mm metal grill with foam
 Mounting: 35mm/M12 pole mount
 Dimensions (HxWxD): 650 x 520 x 600 mm
 Net Weight: 33 Kg / 72,7 lbs

Pure Club 12**D3760** 12" Sub + 6" Tops Active Speaker Set without DSP

Special features:

- Built-in amplifiers & dynamics
- HiFi Sound quality
- Adjustable subwoofer level
- Phase invert switch

**Technical Information**

Housing:	Plywood
Frequency Response (-3dB):	45 - 20000 Hz
S/N Ratio:	> 100 dB
Crossover Frequency:	125 Hz, 24 dB/Oct BW
Speaker Low:	12" / 2" Voice Coil
Speaker High:	6.5/1" passive vented PA satellite speaker system
Protection:	Short circuit, temperature, overload
Power Amp Low:	350 Watt RMS in 8 Ohm
Power Amp High:	2x 120W RMS at 8 Ohm
Dispersion Satellite (HxV):	90 x 60 °
Dispersion Sub (HxV):	360 x 180 °
Sensitivity Sub (Half Space):	100 dB / W / m

Sensitivity Sat. (Full Space):	95 dB / W / m
Dimensions Sub LxWxH:	450 x 510 x 600 mm
Dimensions Sat. LxWxH:	240 x 388 x 245 mm
Weight Subwoofer:	26 kg
Weight Satellite:	6.4 kg
SPL peak Sub @1m:	125.4 dB
SPL peak Sat. @1m:	115.8 dB

The Pure Club 12 set has two 6,5/1" satellites and a 12" subwoofer with built-in amplifier. Satellites are equipped with neodymium high drivers and a special wave guide for frequencies up to 20Khz. The built-in dynamics will protect the system and speaker drivers against overload and will give an excellent frequency response at any sound level. The set is finished with scratch resistant paint and stylish metal grills. Pure Club 12 set is ideal for small partys schools, practice rooms and exhibitions



Pure Club 15

D3761 15" Sub + 8" Tops Active Set with DSP

Special features:

- Compact & Powerful
- 24-bit DSP Processor with LCD-display
- Natural sound quality
- Fully customizable EQ



Technical Information

Housing: Plywood
 Frequency Response (-3dB): 40 - 20000 Hz
 S/N Ratio: > 103 dB
 Crossover Frequency: 125 Hz, 24 dB/Oct BW
 Speaker Low: 15" / 2" Voice Coil
 Speaker High: 8/1" passive vented PA Satellite speaker system
 Protection: Short circuit, temperature, overload
 Power Amp Low: 400W RMS at 8 Ohm
 Power Amp High: 2x 150W RMS at 8 Ohm
 Dispersion Satellite (HxV): 90° x 60° °
 Dispersion Sub (HxV): 360 x 180 °

Sensitivity Sub (Half Space): 102 dB / W / m
 Sensitivity Sat. (Full Space): 95 dB / W / m
 Dimensions Sub LxWxH: 500 x 600 x 700 mm
 Dimensions Sat. LxWxH: 265 x 425 x 255 mm
 Weight Subwoofer: 36 kg
 Weight Satellite: 7 kg
 SPL peak Sub @1m: 128 dB
 SPL peak Sat. @1m: 116.8 dB

The bigger brother of the Pure Club 12 with a 15" subwoofer and two 8"/1" satellites. The satellites are equipped with neodymium high drivers and a special wave guide for frequencies up to 20Khz. Due to the 8" mid speakers this set has a more detailed natural sound quality. The built-in DSP processor will protect the system and speaker drivers against overload and will give an excellent frequency response at any sound pressure level. The set is finished with scratch resistant paint and stylish metal grills.



PSS-110 MKIII

D2611 10" Portable Battery Powered Soundsystem

Special features:

- Main power & battery operation
- Built-in battery charger with overload protection
- All in one concept: USB player, mixer and wireless mic
- Trolley model makes transportation easy



Technical Information

Power Supply: 110V / 240VAC, 50/60Hz
 Battery: 22.2V (Lithium battery)
 System Type: 2-Way Active Vented Speaker
 Transducer Low: 10" Woofer, 1.5" Voice coil
 Transducer driver: 1" Ferrite Driver, 1" Voice coil
 Horn Coverage: 90° H x 45° V
 Frequency Response(-6dB): 65Hz-20KHz
 Crossover Frequency: 5KHz
 Max SPL: 117dB Max
 AMP Power Output: RMS: 200W(AC)(LF-Class D 135W&HF-Class D 65W)
 Equalizer Controls: BASS: ±10dB (at 100Hz)
 TREBLE: ±10dB (at 10kHz)
 External Controls: Master Volume Controls : Mic & Line
 AUX each Volume Controls: Wireless Volume Controls; Voice Priority Switch;

Power Indicators:

Voice Priority:
 Signal to noise ratio:
 Line:
 Battery charge time:
 Battery use time:
 Wireless Frequency band:
 Built-in player:
 Enclosure Construction:
 Mounting:
 Dimensions(HxWxD):
 Net Weight:

Recharged Indicators; Battery Level indicators;

RF Signal Indicators
 MIC1 and Wireless
 Mic: >70dB
 >75dB
 Less than 5 hours
 More than 3 hours (Regular Play)
 615 - 637MHz
 MP3 – USB Player
 Plastic cabinet, trapezoidal ,metal grille, rubber foot ,handle.
 35,5mm standard pole-mount
 568 x 300 x 300mm
 12.8 Kg

The Dap Audio PSS-110 MKIII is the successor of the PSS-series with a complete new design in a lightweight ABS housing. The PSS-110 MKIII is a complete portable PA system powered by an internal battery. When it is used on mains power the battery will be charged automatically. The built-in charger has an overload protection circuit and a battery level indicator. The PSS-110MKIII is equipped with a USB player, a four channel audio mixer for microphone and line signals and a wireless microphone. The mixer has master volume, bass and treble control and a talk over function. To connect the PSS-110 MKIII with a second PA system it has a dedicated line output. It is an all-in-one concept that is very easy to use at events and places where you don't have access to a main power supply like: • Fair events • Theme parks • Sport events • Outdoor church services • Street musicians • Product presentations



Xi-3

D3432 4" Two-way installation cabinet black - (set of 2 pcs)

D3433 4" Two-way installation cabinet white (set of 2 pcs)



Technical Information

Nominal Impedance:	8 Ohm
Continuous power:	30W
Program power:	60W
Peak power:	90W
Array RMS power:	60W (2pcs @ 4 Ohm) 120W (4pcs @ 8 Ohm) 180W (6pcs @ 5,3 Ohm) 240W (8pcs @ 40hm)
Components:	4" Neodymium woofer + 3x 0,5" dome tweeter
Freq response (-3dB):	160 – 18.000 Hz
Freq response (-10dB):	100 – 20.000 Hz
Recommended HPF:	160Hz
Crossover Frequency:	3000 Hz, 12dB/Okt
Sensitivity (Full Space):	88 dB /W /m
Peak SPL at 1m:	94dB
Nominal dispersion (HxV):	110° x 20°
Connectors:	3 pcs, 6,3mm Jack
Housing:	Aluminium Cabinet, Resistant Black Finish
Dimensions:	170 x 141 x 162 mm
Weight:	1,5 Kg

DELIVERY IS SET OF 2 PIECES !!!!!

Wall Bracket for Xi-3

D3434 Black

Wall Bracket for Xi-3

D3435 White/Silver

Suspension bracket for Xi-3

D3436 Black

Suspension bracket for Xi-3

D3437 White/Silver

Mobile Bracket for Xi-3

D3438 Black

Mobile Bracket for Xi-3

D3439 White



Xi-5 MKII**D3445** 5,25" / 1" Full range installation cabinet white**D3444** 5,25" / 1" Full range installation cabinet black

Special features:

- 16 Ohm
- Celestion Driver
- Multiple mounting options
- Smooth frequency response
- Detachable MagTag metal grill

**Technical Information**

Speaker system:	2-way
Continuous power:	125 Watt
Program power:	250 Watt
Peak power:	500 Watt
Impedance:	16 Ohm
Sensitivity W/m (Full Space):	93 dB
Peak SPL at 1 m (Theoretical):	120 dB
LF Driver:	5,25"
HF Driver:	1" Celestion
Dispersion (HxV):	90° x 60°
Freq. Response (-3 dB):	80 – 20.000 Hz
Freq. Range (-10 dB):	60 – 20.000 Hz
Recommended High Pass Filter:	75 Hz, BW-24
Mounting:	M6 screw-threads for optional brackets
Connectors:	Speakon in & thru
Construction:	Wood
Grill material:	Steel
Dimensions :	225 x 205 x 275 mm
Weight:	4.9 Kg
Approvals:	CE

Hanging bracket for Xi-5**D3422HB** including 4x M6x30 Black**Hanging bracket for Xi-5****D3422WHB** including 4x M6x30 White

Presenting the Xi MKII series, a loudspeaker range for fixed audio installations, redesigned from the Xi- installation speakers with significant changes. Major change is the use of a Celestion HF Driver which enhances the sound performance of the unit extensively. The cabinet and grill have been redesigned as well to have a contemporary and elegant look.

Besides the looks and sound quality it also excels in installer-solutions with versatile installation possibilities: optional U-shape brackets, screw threads for use of flying eyes and to fit most common wall mount brackets.

No inner adapter applied and a recessed speakeron chassis completes the perfect design for an install cabinet. Finished with a scratch resistant paint and a MagTag metal grill, which can be detached without tools, fast and easily.

The Xi-5MKII and Xi-6MKII are 16 Ohm to accommodate installations with larger quantities. Xi-8MKII and Xi-10MKII have rotatable horns which makes the use in both horizontal and vertical position possible. The high powered subwoofer has a ultra-compact design so it will fit in every location and with the optional slim line wall bracket it is possible to mount the subwoofer tight to a wall.

The Xi-MKII series meets today's standards and is applicable for a wide variety of indoor applications such as restaurants, cafes, clubs, health centers, theme parks, hospitality areas and anywhere where an outstanding sound quality and a compact high pressure level speaker are required. Xi MKII series cabinets are available in black and white.





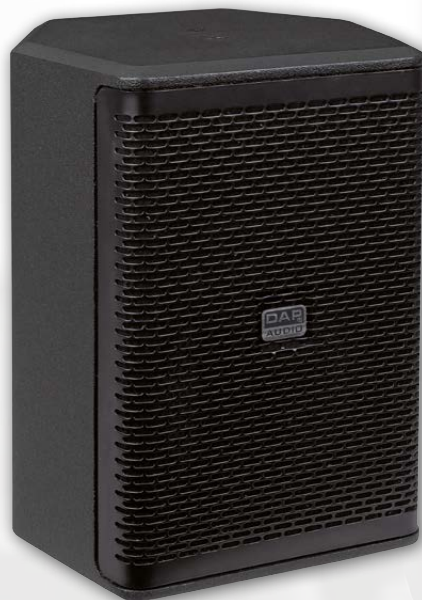
Xi-6 MKII

D3446 6,5" / 1" Full range installation cabinet black

D3447 6,5" / 1" Full range installation cabinet white

Special features:

- 16 Ohm
- Celestion Driver
- Multiple mounting options
- Smooth frequency response
- Detachable MagTag metal grill



Hanging bracket for Xi-6

D3423HB including 4x M6x30 Black

Hanging bracket for Xi-6

D3423WHB including 4x M6x30 White

Technical Information

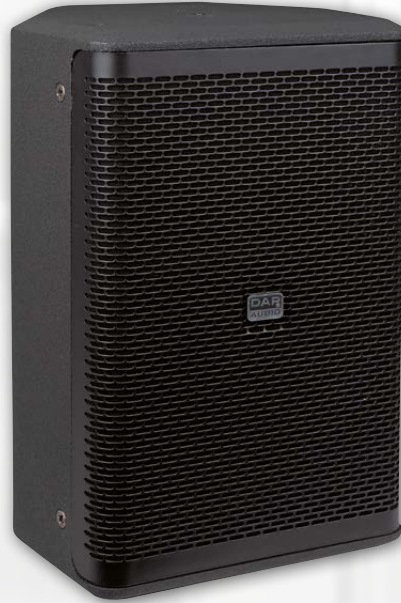
Speaker system:	2-way
Continuous power:	175 Watt
Program power:	300 Watt
Peak power:	700 Watt
Impedance:	16 Ohm
Sensitivity W/m (Full Space):	92 dB
Peak SPL at 1 m (Theoretical):	122 dB
LF Driver:	6,5"
HF Driver:	1" Celestion
Dispersion (HxV):	90° x 60°
Freq. Response (-3 dB):	80 – 20.000 Hz

Freq. Range (-10 dB):	60 – 20.000 Hz
Recommended High Pass Filter:	75 Hz, BW-24
Mounting:	M6 screw-threads for optional brackets
Connectors:	Speakon in & thru
Construction:	Wood
Grill material:	Steel
Dimensions:	250 x 226 x 333 mm
Weight:	6 Kg
Approvals:	CE

Xi-8 MKII**D3448** 8" / 1,375" Full range Installation cabinet black**D3449** 8" / 1,375" Full range Installation cabinet white

Special features:

- Celestion high driver
- Rotatable 90° x 60° horn
- Multiple mounting options
- Smooth frequency response
- Detachable MagTag metal grill

**Hanging bracket for Xi-8****D3424HB** including 4x M6x30 Black**Hanging bracket for Xi-8****D3424WHB** including 4x M6x30 White**Technical Information**

Speaker system: 2-way
 Continuous power: 250 Watt
 Program power: 500 Watt
 Peak power: 1000 Watt
 Impedance: 8 Ohm
 Sensitivity W/m (Full Space): 95 dB
 Peak SPL at 1 m (Theoretical): 125 dB
 LF Driver: 8"
 HF Driver: 1" Celestion
 Dispersion (HxV): 90° x 60°
 Freq. Response (-3 dB): 55 – 20.000 Hz

Freq. Range (-10 dB): 55 – 20.000 Hz
 Recommended High Pass Filter: 55 Hz, BW-24
 Mounting: M6 screw-threads for optional brackets
 M8 screw-threads for flying eyes
 Speakon in & thru
 Construction: Wood
 Grill material: Steel
 Dimensions: 290 x 263 x 430 mm
 Weight: 10,7 Kg
 Approvals: CE

Xi-10 MKII

D3450 10" / 1,375" Full range installation cabinet black

D3451 10" / 1,375" Full range installation cabinet white

Special features:

- Celestion high driver
- Rotatable 90° x 60° horn
- Multiple mounting options
- Smooth frequency response
- Detachable MagTag metal grill



Hanging bracket for Xi-10

D3425HB including 4x M6x30 Black

Hanging bracket for Xi-10

D3425WHB including 4x M6x30 White

Technical Information

Speaker system: 2-way
 Continuous power: 300 Watt
 Program power: 600 Watt
 Peak power: 1200 Watt
 Impedance: 8 Ohm
 Sensitivity W/m (Full Space): 96 dB
 Peak SPL at 1 m (Theoretical): 127 dB
 LF Driver: 10"
 HF Driver: 1.4" Celestion
 Dispersion (HxV): 90° x 60°
 Freq. Response (-3 dB): 45 – 18.000 Hz

Freq. Range (-10 dB): 40 – 20.000 Hz
 Recommended High Pass Filter: 40 Hz, BW-24
 Mounting: M6 screw-threads for optional brackets
 M8 screw-threads for flying eyes
 Connectors: Speakon in & thru
 Construction: Wood
 Grill material: Steel
 Dimensions: 350 x 300 x 528 mm
 Weight: 14 Kg
 Approvals: CE

Hanging bracket for Xi-28B

D3426HB

Xi-28 MKII**D3452** Installation subwoofer black**D3453** Installation subwoofer white

Special features:

- Double 8" 4 Ohm compact sub
- Natural high pressure bass reproduction
- Extreme tight mountable
- Recessed speakon chassis

**Xi-12B Sub****D3442** 12" Installation subwoofer black**D3443** 12" Installation subwoofer white

Special features:

- High Peak SPL: 125dB
- Smooth frequency response.
- Compact design
- Lightweight: 20,5 Kg

**Technical Information**

Speaker system:	Dual bass reflex sub
Continuous power:	400 Watt
Program power:	800 Watt
Peak power:	1600 Watt
Impedance:	4 Ohm
Sensitivity W/m (Half Space):	100 dB
Peak SPL at 1 m (Theoretical):	132 dB
LF Driver:	2x 8"
Dispersion (HxV):	360° x 180°
Freq. Response (-3 dB):	45 – 4.000 Hz
Freq. Range (-10 dB):	40 – 4.500 Hz
Recommended High Pass Filter:	45 Hz, BW-24
Recommended Low Pass Filter:	110 Hz, LR-24
Mounting:	Floor / Optional bracket
Connectors:	Speakon in
Construction:	Wood
Grill material:	Steel
Dimensions(W x H x D):	520 x 240 x 540 mm
Weight:	17Kg
Approvals:	CE

Technical Information

Nominal Impedance:	4 Ohm
Continuous power:	300W
Program power:	600W
Peak power:	900W
Components:	12" woofer with 2,5" VC
Freq response (Processed):	42 - 150 Hz
Freq response (Flat, -10dB):	42 – 2.800 Hz
Recommended HPF:	42Hz, BW-24
Recommended LPF:	150Hz, LR-24
Sensitivity (Full Space):	99 dB /W /m
Peak SPL at 1m:	125dB
Nominal dispersion (HxV):	360° x 180°
Connectors:	Speakon in-and out, 4-pin Terminal block
Housing:	Birch Plywood, Resistant Black Finish
Dimensions:	500 x 350 x 542 mm
Weight:	20,5 Kg

DCS-6230-16

D6585 30W 6" Ceiling speaker 16 Ohm



DCS-8240-16

D6584 100W 8" Ceiling Speaker 16 Ohm



Technical Information

Continuous Power: 30W
 Impedance: 16Ω
 Speaker size LF: 6"
 Speaker size HF: 1/2"
 Frequency response: 90-20kHz
 Sensitivity: 88dB
 Material: ABS
 Colour: White
 IP rating: IP-40
 Mounting Hole: ø200mm
 Dimensions (LxWxH): 232 x 90
 Weight: 1.4Kg

Technical Information

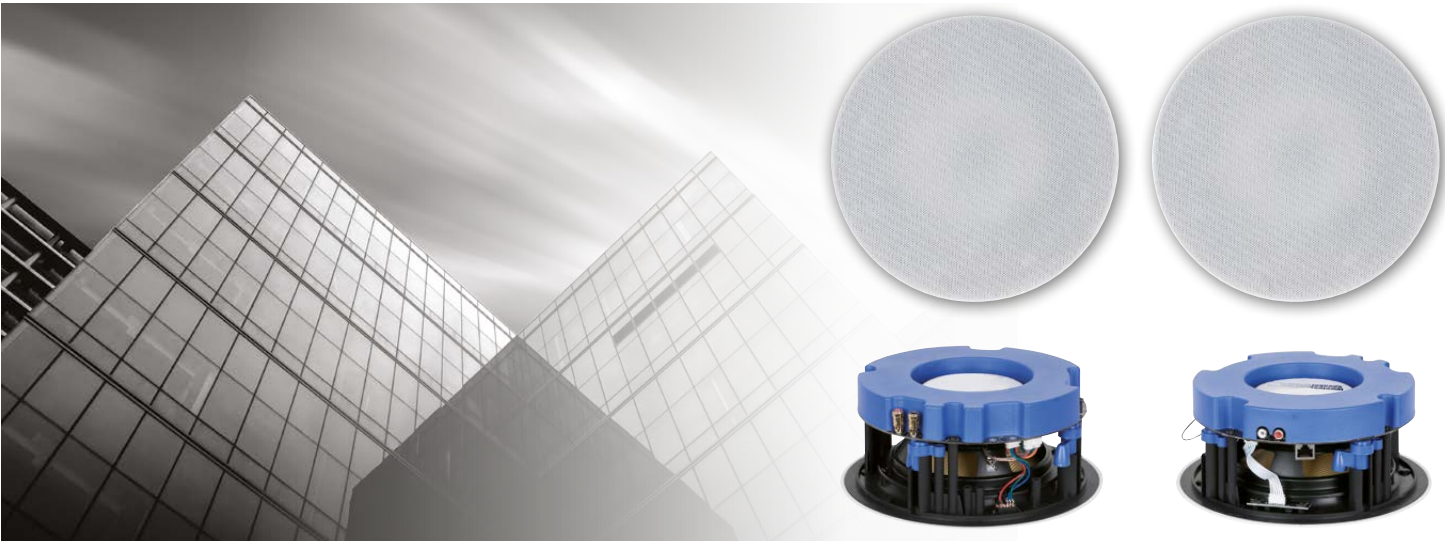
Continuous Power: 100W
 Impedance: 16Ω
 Speaker size LF: 8inch
 Speaker size HF: 1inch
 Frequency response: 50-20kHz
 Sensitivity: 90dB
 Material: ABS
 Colour: White
 IP rating: IP-40
 Mounting Hole: ø245mm
 Dimensions (LxWxH): 281 x 110
 Weight: 2.61Kg

WCSS-230

D6450 Wireless Ceiling Speaker Set

Special features:

- Set of 2 Speakers
- WIFI and Wired network connection
- Airplay, DLNA, Internet radio
- Direct stream from smart phones
- Multi-room configuration



Technical Information

Network Connection:	Wifi & wired RJ-45
Wifi standard:	IEEE802.11b, IEEE802.11g, IEEE802.11n
Local music:	Airplay, DLNA, Direct smartphone stream
Streaming:	Spotify, Qplay, Deezer, Melon, TuneIn
Supported Audio formats:	AAC, ACC, WMA, FLAC, Mp3, PCM, WAVE
App:	Smart Sonix (App store & Google play)
Speaker	
LF Speaker:	6,5" Kevlar
HF Speaker:	0,75" Titanium
Cutout dimension:	210mm
Overall dimension:	227x100mm
Amplification	
Amplifier:	2x30Watt Class D
THD:	<0,05% @ 1 W
Treble attenuation:	+/- 3dB
Analogue Input:	RCA
Output:	1x30W for passive version
Power input:	DC24V/5A
Rated power:	60W
Standby power:	5W



EVO 4

D3670 Set of 2 pcs - 40W Black

D3671 Set of 2 pcs - 40W White

Special features:

- IP 54 Protection Rate
- Multi angled Brackets
- Fast and easy installation
- High power handling



EVO 5

D3672 Set of 2 pcs - 60W Black

D3673 Set of 2 pcs - 60W White

Special features:

- IP 54 Protection Rate
- Multi angled Brackets
- Fast and easy installation
- High power handling



Technical Information

Speaker system:	2-way Full Range
Continues power:	40 Watt
Peak power:	80 Watt
Impedance:	8 Ohm
Sensitivity W/m:	88dB
LF Driver:	4"
HF Driver:	0,5" Dome Tweeter
Dispersion:	110 x90° HxV
Frequency Response:	100Hz-20.000Hz (-3dB)
Mounting:	60° Multi angled bracket
Connection:	Terminals
Construction:	ABS
Grill material:	Steel
Dimensions:	195 x 126 x 127mm
Weight:	1,8 Kg
Approvals:	CE
IP Rating:	54



Technical Information

Speaker system:	2-way Full Range
Continues power:	60 Watt
Peak power:	120 Watt
Impedance:	8 Ohm
Sensitivity W/m:	89dB
LF Driver:	5,25"
HF Driver:	0,5" Dome Tweeter
Dispersion:	110 x90° HxV
Frequency Response:	80Hz-20.000Hz (+/-3dB)
Mounting:	60° Multi angled bracket
Connection:	Terminals
Construction:	ABS
Grill material:	Steel
Dimensions:	252 x 163 x 163mm
Weight:	2,3 Kg
Approvals:	CE
IP Rating:	54



EVO 6**D3674** Set of 2 pcs - 70W Black**D3675** Set of 2 pcs - 70W White

Special features:

- IP 54 Protection Rate
- Multi angled Brackets
- Fast and easy installation
- High power handling

**EVO 8****D3676** Set of 2 pcs - 80W Black**D3677** Set of 2 pcs - 80W White

Special features:

- IP 54 Protection Rate
- Multi angled Brackets
- Fast and easy installation
- High power handling

**Technical Information**

Speaker system:	2-way Full Range
Continues power:	70 Watt
Peak power:	140 Watt
Impedance:	8 Ohm
Sensitivity W/m:	90dB
LF Driver:	6,5"
HF Driver:	1" Dome Tweeter
Dispersion:	110 x90° HxV
Frequency Response:	50Hz-20.000Hz (-3dB)
Mounting:	60° Multi angled bracket
Connection:	Terminals
Construction:	ABS
Grill material:	Steel
Dimensions:	302 x 196 x 193mm
Weight:	3,7 Kg
Approvals:	CE
IP Rating:	54

Technical Information

Speaker system:	2-way Full Range
Continues power:	80 Watt
Peak power:	160 Watt
Impedance:	8 Ohm
Sensitivity W/m:	90dB
LF Driver:	8"
HF Driver:	1" Dome Tweeter
Dispersion:	110 x90° HxV
Frequency Response:	48Hz-20.000Hz (-3dB)
Mounting:	60° Multi angled bracket
Connection:	Terminals
Construction:	ABS
Grill material:	Steel
Dimensions:	385 x 250 x 227mm
Weight:	5,1 Kg
Approvals:	CE
IP Rating:	54

EVO 5A

D3688 Active speaker set, 25W Black

D3689 Active speaker set, 25W White

Special features:

- Built-in amplifier
- Multi angled Brackets
- Fast and easy installation
- Balanced inputs

EVO 6A

D3690 Active speaker set, 35W Black

D3691 Active speaker set, 35W White

Special features:

- Built-in amplifier
- Multi angled Brackets
- Fast and easy installation
- Balanced inputs



Technical Information

Speaker system: Active 2-way Full Range
 Continues power: 2x25Watt
 Connection: Balanced / Unbalanced
 Sensitivity W/m: 89dB
 LF Driver: 5,25" Woofer
 HF Driver: 1" Mylar Dome Tweeter
 Dispersion: 110 x90° HxV
 Frequency Response: 80Hz-20.000Hz (+/-3dB)
 Mounting: 60° Multi angled bracket
 Construction: ABS
 Grill material: Steel
 Dimensions: 252 x 163 x 163mm
 Weight: 5,9 Kg
 Approvals: CE



Technical Information

Speaker system: Active 2-way Full Range
 Continues power: 2x35Watt
 Connection: Balanced / Unbalanced
 Sensitivity W/m: 90dB
 LF Driver: 6,5" Woofer
 HF Driver: 1" Mylar Dome Tweeter
 Dispersion: 110 x90° HxV
 Frequency Response: 50Hz-20.000Hz (+/-3dB)
 Mounting: 60° Multi angled bracket
 Construction: ABS
 Grill material: Steel
 Dimensions: 302 x 196 x 193mm
 Weight: 8,8 Kg
 Approvals: CE



EVO 8A**D3692** Active speaker set, 80W Black**D3693** Active speaker set, 80W White

Special features:

- Built-in amplifier
- Multi angled Brackets
- Fast and easy installation
- Balanced inputs

**Technical Information**

Speaker system:	Active 2-way Full Range
Continues power:	2x80Watt
Connection:	Balanced / Unbalanced
Sensitivity W/m:	92dB
LF Driver:	8" Woofer
HF Driver:	1" Silk Dome Tweeter
Dispersion:	100 x90° HxV
Frequency Response:	40Hz-20.000Hz (+/-3dB)
Mounting:	60° Multi angled bracket
Construction:	ABS
Grill material:	Steel
Dimensions:	385 x 250 x 227mm
Weight:	13,5 Kg
Approvals:	CE

HP-280 Pro

D1810 Professional semi-open studio headphones

Special features:

- Semi-open headphone
- Natural & Deep sound
- Self-adjusting headband
- Comfortable fit



Technical Information

Driver unit:	Ø50
Impedance:	32 Ohm
Sensitivity:	98 dB SPL (1mW)
Freq. Response:	10-30.000Hz
Maximum power:	300mW
Cord length:	2.5m
Connector:	3.5mm Jack
Weight:	0.28 Kg
Accessories:	Pouch, 3.5 > 6.3mm stereo adapter



HP-290 Pro

D1811 Professional closed studio headphones

Special features:

- Closed back headphone
- Natural & Deep sound
- Self-adjusting headband
- Comfortable fit

Technical Information

Driver unit:	Ø50
Impedance:	32 Ohm
Sensitivity:	98 dB SPL (1mW)
Freq. Response:	10-30.000Hz
Maximum power:	300mW
Cord length:	2.5m
Connector:	3.5mm Jack
Weight:	0.28 Kg
Accessories:	Pouch, 3.5 > 6.3mm stereo adapter

PL-08**D1303** Vocal Dynamic Microphone

The DAP PL-08 is a cardioid dynamic microphone for professional vocal use. The rugged construction with steel mesh grill is roadproof and therefore, the PL-08 is suitable for live performance, outdoor/indoor singing, speech and studio recording.

**PL-08S****D1304** Vocal/all-round

The DAP PL-08S is the same mic as the PL-08. The only difference is the ON/OFF switch, therefore it's an ideal choice for conference and DJ-use.

**PL-08B****D1305** Vocal Dynamic Microphone

The DAP PL-08B is a supercardioid dynamic microphone, specially designed for professional vocal use, speech and studio recording. The supercardioid pattern insures a high gain before disturbing feedback.

**Technical Information**

Type: Dynamic, moving coil.
 Freq. response: 50 to 16.500 Hz
 Polar Pattern: Cardioid
 Sensitivity (1000 Hz): 1,8 mV/Pa*
 (*1 Pa = 94 dB SPL)
 Max. SPL: 137 dB
 Impedance: 600 Ohm
 Power supply: none
 Connector: 3p. XLR (male-type)
 Accessories: 6 m balanced cable with XLR plugs
 Dimensions: Ø 51 mm x L 160 mm
 Net. Weight: 0,315 Kg

Technical Information

Type: Dynamic, Moving coil.
 Freq. response: 50 to 16.500 Hz
 Polar Pattern: Cardioid
 Sensitivity (1000 Hz): 1,8 mV/Pa*
 (*1 Pa = 94 dB SPL)
 Max. SPL: 137 dB
 Impedance: 600 Ohm
 Power supply: none
 Connector: 3p. XLR (male-type)
 Accessories: 6 m balanced cable with XLR plugs
 Dimensions: Ø 51 mm x L 160 mm
 Net. Weight: 0,298 Kg

Technical Information

Type: Dynamic, moving coil.
 Freq. response: 50 to 16.000 Hz
 Polar Pattern: Cardioid
 Sensitivity (1000 Hz): 2,9 mV/Pa*
 (*1 Pa = 94 dB SPL)
 Max. SPL: 137 dB
 Impedance: 600 Ohm
 Power supply: none
 Connector: 3p. XLR (male-type)
 Accessories: 6 m balanced cable with XLR plugs
 Dimensions: Ø 51 mm x L 160 mm
 Net. Weight: 0,28 Kg

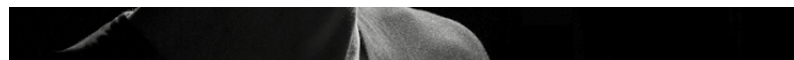
CM-50

D1322 Vocal/Instrument Back Electret
Condenser Microphone

The DAP microphone CM-50 is an extremely rugged supercardioid back electret condenser microphone for professional lead/backup vocal use in live performance with built-in-two stage anti-pop filter which reduces wind and breathing noise. Due to its concept it is an excellent choice for vocals on stage, studio recording and mid-high frequency instrument miking. Adapter inclusive!

**Technical Information**

Type:	Back Electret Condenser
Polar pattern:	Super Cardioid
Freq. response:	50~16000 Hz
Sensitivity (1000 Hz):	4,5 mV/Pa* (*1 Pa = 94 dB SPL)
Max. SPL:	140 dB (THD ≤ 1% 1000 Hz)
Impedance:	200 Ohm
Power supply:	48V Phantom
Connector:	3p. XLR (male-type)
Accessories:	Thread adapter 5/8, 4/8, 3/8 Stand mount with 5/8 treat 1 storage case
Net. Weight:	0,21 Kg



PDM-45**D1342** Dynamic vocal microphone pro

The PDM-45 is an all-round vocal microphone which also can be used as instrument microphone because of the flat metal pop filter. It has an excellent sound quality. Its transient response and directivity will make this microphone a good choice for professional users.

**Technical Information**

Type:	Dynamic
Polar Pattern:	Supercardioid
Frequency Response:	50-18,000 Hz
Sensitivity:	-56 dBV/Pa* (1.6 mV)
Max. SPL:	134 dB SPL
Impedance:	250 Ω
Power supply:	none
Connector:	3p. XLR (male)
Accessories:	Mic clip, 5/8"-3/8" Threaded Adapter, Pouch
Dimensions:	Ø49 x 173 mm
Net Weight:	0,39Kg
(*1 Pa = 94dB SPL)	

PDM-Pack**D1344** Vocal pack with 3 dynamic microphones

The PDM-Pack is the solution for bands with background vocals, schools, repetition rooms and many other applications. It has 3 all-round microphones in one affordable package.

**Technical Information**

Type:	Dynamic
Polar Pattern:	Supercardioid
Frequency Response:	80-12,000 Hz
Sensitivity:	-53 dBV/Pa* (2.2 mV)
Max. SPL:	130 dB SPL
Impedance:	500 Ω
Power supply:	none
On/Off switch:	none
Connector:	3p. XLR (male)
Accessories:	Hard case, Mic clip, 5/8"- 3/8" Threaded Adapter
Dimensions:	Ø54 x 180 mm (Ø2.13" x 7.09")
Net Weight:	0,250Kg
*1 Pa = 94dB SPL	

VM-60**D1381** 60's Vintage Mic

The VM-60 is a dynamic microphone with the performance and looks straight out of the '50s and '60s. It's a vocal microphone and has a moving coil with a cardioid pattern. When you use the VM-60 mic you will experience the sound of the 60's again.

**Technical Information**

Type:	Dynamic, moving coil
Freq. response:	40 Hz - 18 KHz
Polar pattern:	Cardioid
Sensitivity:	-52dB (0dB=1V/Pa 1000Hz)
Max. SPL:	137dB
Impedance:	300 Ohm +/- 30%
Power supply:	Not required
Connector:	3 Pole XLR
Dimensions:	190 x 75 x 75 mm (HxWxD)
Weight:	1Kg
On / Off switch:	Yes



PL-07

D1301 Instrument Dynamic Mic.



PL-07B

D1302 Instrument/Vocal Dynamic Mic.



DM-20

D1332 Instrument Dynamic Mic.



Technical Information

Type: Dynamic, Moving coil.
 Freq. response: 40 to 16.500 Hz
 Polar Pattern: Cardioid
 Sensitivity (1000 Hz): 1,7 mV/Pa*
 (*1 Pa = 94 dB SPL)
 Max. SPL: 137 dB
 Impedance: 600 Ohm
 Power supply: none
 Connector: 3p. XLR (male-type)
 Accessories: 6 m balanced cable with XLR plugs
 Dimensions: Ø 32 mm x L 157 mm
 Net. Weight: 0,245 Kg

Technical Information

Type: Dynamic, moving coil.
 Freq. response: 50 to 16.000 Hz
 Polar Pattern: Cardioid
 Sensitivity (1000 Hz): 2,6 mV/Pa*
 (*1 Pa = 94 dB SPL)
 Max. SPL: 137 dB
 Impedance: 600 Ohm
 Power supply: none
 Connector: 3p. XLR (male-type)
 Accessories: 6 m balanced cable with XLR plugs
 Dimensions: Ø 42 mm x L 160 mm
 Net. Weight: 0,271 Kg

Technical Information

Type: Dynamic, moving coil.
 Polar pattern: Super Cardioid
 Freq. response: 20 to 12.500 Hz
 Sensitivity (1000 Hz): 2,2 mV/Pa*
 (*1 Pa = 94 dB SPL)
 Max. SPL: 134 dB
 (THD ≤ 1% 1000 Hz)
 Impedance: 500 Ohm
 Power supply: none
 Connector: 3p. XLR (male-type)
 Accessories: Thread adapter 5/8, 4/8, 3/8
 Integrated stand mount 1 storage case (Ø 43 mm x L 117 mm)
 Dimensions: Ø 43 mm x L 117 mm
 Net. Weight: 0,212 Kg

DM-25**D1333** Instrument Dynamic Mic.**Technical Information**

Type: Dynamic, moving coil.
 Freq. response: 50 to 16000 Hz
 Polar pattern: Super Cardioid
 Sensitivity (1000 Hz): 2,2 mV/Pa*
 (*1 Pa = 94 dB SPL)
 Max. SPL: 134 dB
 (THD \leq 1% 1000 Hz)
 Impedance: 500 Ohm
 Power supply: none
 Connector: 3p. XLR (male-type)
 Accessories: Thread adapter 5/8, 4/8, 3/8
 Integrated stand mount 1 storage case
 Dimensions: (Ø 42 mm x L 117 mm)
 Net. Weight: 0,186 Kg

DM-45**D1353** Dynamic Instrument Mic.**Technical Information**

Type: Dynamic
 Polar Pattern: Super cardioid
 Frequency Response: 50-18,000 Hz
 Sensitivity: -54 dBV/Pa* (2.0 mV)
 Max.SPL: 135 dB
 Impedance: 200 Ω
 Power supply: none
 Connector: 3p. XLR (male)
 Accessories: Shock mount, Drum clamp, Pouch
 Dimensions: Ø42.5x144.0 mm
 Net Weight: 0,2 Kg
 *1 Pa = 94dB SPL

DM-35**D1356** Guitar Amp Mic**Technical Information**

Type: Dynamic
 Polar Pattern: Super cardioid
 Frequency Response: 80-18.000 Hz
 Sensitivity: -55 dBV/Pa* (1.8 mV)
 Max.SPL: 150 dB SPL
 Output Impedance: 200 Ω
 Power supply: None
 Connector: 3p. XLR
 Accessories: gooseneck clamp, mic clip, pouch
 Dimensions: 136x54x46 mm
 Net Weight: 0.17 Kg
 *1 Pa = 94dB SPL

DM-55**D1357** Kick Drum Mic**Technical Information**

Type: Dynamic
 Polar Pattern: Super cardioid
 Frequency Response: 30-10,000 Hz
 Sensitivity: -61 dBV/Pa (0.9 mV)
 Max.SPL: 148 dB SPL
 Output Impedance: 200 Ω
 Power supply: None
 Connector: 3p. XLR
 Accessories: Clip with screw knob, threaded adapter, Pouch
 Dimensions: Ø58x140 mm
 Net Weight: 0.36 Kg

CM-95

D1355 Boundary kick drum microphone

This low profile boundary kick drum mic gives you a drum sound with an excellent attack and punch. It can handle very high SPL's and should be used in the kick drum on a pillow or other surface. To get more flexibility and create a better drum sound you can use it together with the DAP DM-55 (D1357). The CM-95 has a fixed cable of 1.5m with an XLR connector.

**CM-1**

D1360 Small Diagram Pencil Condenser

The DAP CM-1 is a thin model condenser-microphone that comes with a cardioid and omni element. Depending on the application or personal taste the element can be exchanged. The CM-1 is ideally suited as a microphone for recording live ambient, drum overhead or acoustic instruments.

**Technical Information**

Type: Back electret, Ø14 mm
 Polar Pattern: Cardioid
 Frequency Response: 30-18,000 Hz
 Sensitivity: -60 dBV/Pa* (1 mV)
 Max. SPL: 149 dB SPL
 Impedance: 600 Ω
 S/N Ratio: 70 dB
 Equivalent Output Noise: 24 dB
 Dynamic Range: 125 dB
 Power supply: 12-52V Phantom
 Connector: 3p. XLR (male)
 (1.5m Cable)

Accessories: Pouch
 Dimensions: Ø85x20.5 mm
 Net Weight: 0,270Kg

*1 Pa = 94dB SPL

Technical Information

Type: Condenser
 Freq. response: 30 Hz - 22 kHz (-3 dB)
 Polar pattern: omni or cardioid
 Sensitivity: 10 mV/Pa -40 dB -
 Max. SPL: 132 dB
 Impedance: 200 Ohm
 power supply: +48V phantom
 Connector: XLR male type
 Net weight: 200 g
 Dimensions: 23 mm (diameter) x
 L 135 mm
 Accessories: microphone-clip

CM-10

D1334 Instrument Back Electret Condenser Microphone

The DAP CM-10 is a cardioid condenser microphone designed for Piano, acoustic Guitar, Acoustic Bass, Strings, Woodwinds, Orchestra, Cymbals, Live/studio Recording and Vocals.

CM-45

D1354 Overhead Instrument Microphone

The CM-45 is a back electret condenser microphone to be used as overhead. It's suitable for mid to high frequency instruments and capable to resist high SPL without distortion. This makes it also a good overhead solution for drums. It has a low cut filter and pad switch which makes it more flexible for different situations.

**Technical Information**

Type: Back Electret Condenser
 Polar pattern: Super Cardioid
 Freq. response: 50~16000 Hz
 Sensitivity (1000 Hz): 7 mw/Pa*
 (*1 Pa = 94 dB SPL)
 Max. SPL: 137 dB (THD ≤ 1%
 1000 Hz)
 Impedance: 200 Ohm
 Power supply: 9~48 Phantom
 Connector: 3p. XLR (male-type)
 Accessories: Thread adapter 5/8, 4/8,
 3/8
 Stand mount with 5/8 treat
 1 storage case
 Dimensions: Ø 29 mm x L 165 mm
 Net. Weight: 0,18 Kg

Technical Information

Type: Back electret, Ø16 mm
 Polar Pattern: Cardioid
 Frequency Response: 40-20,000 Hz
 Low Frequency Filter: 80 Hz, 12 dB/oct
 Pad: -10 dB
 Sensitivity: -43 dBV/Pa* (7.1 mV)
 Max. SPL: 140 dB SPL
 Impedance: 200 Ω
 S/N Ratio: 69 dB
 Equivalent Noise SPL: 25 dB
 Dynamic Range: 115 dB
 Power supply: 12-52V Phantom
 Connector: 3p. XLR (male)
 Accessories: D8946 Clip, 5/8"-3/8"
 Threaded Adapter, wind
 screen, Pouch
 Dimensions: Ø20x155 mm
 Net Weight: 0,3Kg
 *1 Pa = 94dB SPL

DCLM-60**D1421** Professional Instrument Microphone

The DCLM-60 Miniature clip on condenser microphone is designed for the miking of Drums and percussion instruments. The mounting clamp is special designed to gently hold the ring of a wide variety of instruments. Its cardioid polar pattern design prevents interception of nearby instruments and ensures a very low feedback response on your stage. It's flat response with a slight presence peak in the upper frequencies ensures natural and bright reproduction without colouration.

**ECLM-70****D1418** Professional Instrument Microphone

The ECLM-70 Miniature clip on condenser microphone is designed for the miking of percussion, brass and woodwind instruments. The soft clip is special designed to gently hold the bell of a trumpet, saxophone or any other wind instrument. Its cardioid polar pattern design ensures a very low feedback response on your stage. Its flat response with a slight presence peak in the upper frequencies ensures natural and bright reproduction without colouration.

**HM-30****D1380** Blues-harp/Harmonica Microphone

The DAP HM-30 is a successor of the legendary crystal-type microphones used for blues-harp. With the latest microphone technology and very fine machining, we present a very cute microphone that will help you steal the show.

**Technical Information**

Type:	Back-Electret Condenser
Polar pattern:	Cardioid
Freq. Response:	50-18.000 Hz
Sensitivity (1000 Hz):	3,9 mV/Pa* (*1 Pa = 94 dB SPL)
Max. SPL:	130 dB (1% THD)
Impedance:	220 Ohm ± 30%
Power supply:	48V Phantom
Connector:	150 cm cable with 3p XLR.
Accessories:	Windscreen Mounting clip 1 storage case
Dimensions:	mic: Ø 12 mm x L 17 mm Gooseneck: 55 mm
Net. Weight:	0,095 kg

Technical Information

Type:	Back-Electret Condenser
Polar pattern:	Cardioid
Freq. Response:	50-18.000 Hz
Sensitivity (1000 Hz):	3,9 mV/Pa* (*1 Pa = 94 dB SPL)
Max. SPL:	130 dB (1% THD)
Impedance:	220 Ohm ± 30%
Power supply:	5V Phantom from Beltpack
Connector:	150 cm cable with 4p. Mini-XLR female-type).
Accessories:	Windscreen Mounting clip 1 storage case
Dimensions:	mic: Ø 12 mm x L 17 mm Gooseneck: 125 mm
Net. Weight:	0,071 kg

Technical Information

Type:	Dynamic, moving coil
Freq. response:	40 Hz - 16 kHz (-3 dB)
Polar pattern:	cardioid
Sensitivity:	1,2 mV/Pa -58 dB -
Max. SPL:	140 dB
Impedance:	220 Ohm
Power supply:	none
Connector:	3p. XLR male type
Net weight:	276 g
Dimensions:	57 mm (diameter) x L 76 mm

DK-5**D1331** Instrument microphone kit

This set of microphones is a complete kit of 5 mics for instrument/drumkit miking. It features three different mic's, each for its own field of use. The DK-5 is a complete, versatile mic-kit with an outstanding price-quality balance. The microphones are also separately available.

**Technical Information**

Contents:

- 1 x DM-20 (Base),
- 2 x DM-25 (Tom & Snare)
- 2 x CM-10 (Overhead & Hi-Hat)

DK-7**D1330** Instrument microphone kit

Set of dynamic microphones! This is a complete kit of 7 mic's for instrument/drumkit miking. It features three different mic's, each for its own field of use. The DK-7 is a complete, versatile mic-kit with an outstanding price-quality balance for bigger events. The microphones are also available separately.

**Technical Information**

Contents:

- 4 x DM-25 (Tom & Snare)
- 1 x DM-20 (Base)
- 2 x CM-10 (Overhead & Hi-Hat)

Dimensions (LxWxH): 365 x 290 x 85 mm

Weight: 2,3 kg

CM-67

D1366 Studio FET Condenser Mic.

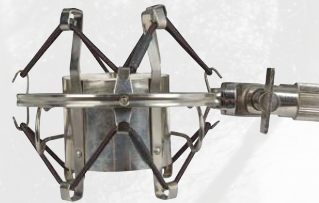
The DAP CM-67 is a large diaphragm condenser-microphone for recording purposes. But it can also be used for live sound amplification in not so rough situations like acoustic ensembles or orchestras.



CM-87

D1365 Large membrane Condenser Microphone

The DAP CM-87 is a large diaphragm condenser-microphone for recording purposes. But it can also be used for live sound amplification in not so rough situations like acoustic ensembles or orchestras.



Technical Information

Type:	Condenser
Freq. response:	30 Hz - 20 kHz (-3 dB)
Polar pattern:	cardioid
Sensitivity:	14 mV/Pa -38 dB -
Max. SPL:	128 dB
Impedance:	200 Ohm
Power supply:	48V Phantom power
Connector:	3p. XLR male type
Net weight:	390 g
Dimensions:	50 mm (diameter) x L 151 mm
Accessories:	Shockmount



Technical Information

Type:	Condenser
Freq. response:	20 Hz - 20 kHz (-3 dB)
Polar pattern:	cardioid, figure-of-8, omni switchable
Sensitivity:	8 mV / Pa -42 dB -
Max. SPL:	130 dB / 140 dB switchable
Impedance:	200 Ohm
Power supply:	48V Phantom power
Connector:	3p. XLR male type
Net weight:	470 g
Dimensions:	50 mm (diameter) x L 167 mm
Accessories:	Shockmount



URM-1

D1601 USB Studio Condenser microphone

This USB microphone is the easiest solution for instant recording without having expensive interfaces, driver problems and setup procedures. Do you have a creative musical idea, connect the URM-1 with your PC or MAC, start recording and surprise yourself with the professional sound quality. The URM-1 has a 22mm moving golden diaphragm with a cardioid pick-up pattern and works with practically all DAW software. The URM-1 comes with USB cable, shockmount and carry pouch.



Technical Information

Type:	Condenser
Freq response:	30Hz - 18kHz
Polar pattern:	Cardioid
Sensitivity:	-32 +/- 2 db (0db = 1v / Pa 1000 Hz)
Max SPL:	140 db (at 1 Khz < 1% THD)
Capsule:	16mm gold diaphragm capsule
SN Ratio:	68 db
Sampling rate:	16 bit, 48 Khz
Power:	USB powered
Connector:	USB connector
Dimensions:	45 x 185 mm (diameter, length)



WPS Guitar

D1456 Wireless guitar system 16 freq.
863-865MHz



The DAP WPS Guitar is a wireless guitar set with 16 switchable frequencies in a bandwidth of 863 – 865 MHz. This means that it can be used in many different countries. It has a very compact “jack style” transmitter. The jack plug on the transmitter can be set into a desired angle to fit many kinds of guitar outputs, so no need to wear a belt-pack anymore. It only needs one AAA battery to work for 8 hours and can be used within a distance of 30 meters. It's easy to use and has a 16-step switch to select your desired frequency, a switch to turn on/off or mute and a gain setting. The diversity receiver is also very compact and designed to fit in a pedal board between your pedal effects. The set is complete with 3 different coloured end-caps, a power adapter, jack cable and a transport case.

Note: This set has 16 switchable frequencies, it is possible to use a maximum of 4 sets together on one stage because the bandwidth of one channel. The sets should be minimal 4 channels separated of each other.

Technical Information

Frequency preparation: PLL Synthesized Control
Frequency range: 863-865 MHz

Transmitter
RF Output: Maximum 10mW
LED indication: Power On/Off, mute, Low
Battery
Controls: Power On/Off, mute, AF Level, Channel select
Frequency response: 40-18.000 Hz
Battery: AAA 1.5V (not included)
Dimensions: 74 x 34 x 23mm (DxHxW)
Weight: 0.04 Kg

Receiver
S/N ratio: >105dB
T.H.D.: <0.6%@1Khz

Display: Channel
LED indication: Antenna A/B, RF/AF status
Controls: Power On/Off, channel select, audio level, squelch
AF Output level: -12dB
AF Output impedance: 600 Ohm
Operation voltage: 9-12VDC, 200mA
Output connector: Unbalanced Jack 6.3mm
Dimensions: 124 x 33 x 73mm (DxHxW)
Weight: 0.14Kg



COM-41

D1408 Handheld Set UHF Wireless Microphone

Technical Information

Modulation: FM, diversity
 Frequency: 863.550 Mhz
 Frequency response: 50Hz - 18Khz
 THD: < 1,0 % (1Khz)
 Maximum distance: Up to 50 meters

Receiver:
 Indications: Antenna AB, AF signal
 Controls: On/Off switch, volume, squelch

Audio outputs: XLR male balanced, 1/4" jack unbalanced
 Power supply: DC 12-15V 300mA
 Dimensions (HxWxD): 47 x 210 x 160 mm
 Weight: 0,4 Kg

Transmitter
 Type microphone: Dynamic
 Polar pattern: Cardioid
 Indications: Low battery
 Controls: On/Off/Standby switch, Squelch
 RF output power: 10mW
 Battery: 2 x AA size, 1.5V
 Dimensions: Length 253 mm, diameter 35 mm, 50 mm grill
 Weight: 0,2 Kg



COM-41

D1409 Backpack UHF Wireless Instrument Set

Technical Information

Modulation: FM with true diversity
 Frequency: 864.8 Mhz
 Frequency response: 50Hz - 18Khz
 THD: < 1,0 % (1Khz)
 Maximum distance: Up to 50 meters

Receiver:
 Indications: Antenna AB, AF signal
 Controls: On/Off switch, volume, squelch

Audio outputs: XLR male balanced, 1/4" jack unbalanced
 Power supply: DC 12-15V 300mA
 Dimensions (HxWxD): 47 x 210 x 160 mm
 Weight: 0,4 Kg

Transmitter
 Connector: 3,5mm jack
 Input impedance: 4Kohm
 Headset mic: Condenser, cardioid
 Lavelier mic: Condenser, cardioid
 Indications: Low battery
 Controls: On/Off/Standby switch, Squelch
 RF output power: 10mW
 Battery: 9V Block
 Dimensions (HxWxD): 108 x 64 247 mm
 Weight: 0,1 Kg



COM-42

D1464 2Ch Handheld Set UHF Wireless Microphone

If you would need 2 wireless microphones, and have just one channel available on your inputs, the COM-42 is the ideal wireless microphone set for you. The wireless receiver has a balanced XLR output for each wireless transmitter, and also an unbalanced MIX output on a 6.3mm Jack plug. By using the volume buttons on the front of the receiver, it is easy to setup the desired balance between 2 transmitters. The COM-42 has 99 frequency present which can be set easily through infrared synchronization technique. A clear LCD display shows the signal strength, audio level and carrier frequency of each channel. A COM-42 wireless microphone set contains a receiver and 2 metal handheld transmitters. Also it is possible to use an optional belt-pack transmitter.



Technical Information

Handheld Transmitter
 Type: Dynamic, moving coil.
 Polar pattern: Cardioid
 Frequency Response: 50-16.000 Hz
 Dynamic: >100dBu
 Sensitivity (1000 Hz): 2,2 mV/Pa*
 (*1 Pa = 94 dB SPL)
 135 dB (1% THD)
 Max. SPL:
 Power supply: 2x Battery UM3, AA1.5V (not included)
 Operation time: >6 hours
 Accessories: 4 Colour-coded stickers, Mini screw driver
 Carrier Frequency Range: 606-630MHz
 RF Output: 10 mW
 Stability: ±0.005%
 Frequency Deviation: ±225 kHz
 LED Indicator: Low battery, Power On/Off
 Controls: Power On/Off, Gain

Spurious Rejection: <-50 dBm
 Dimensions: Ø 50 mm x L 260 mm
 Net. Weight: 0,27 kg

Receiver:
 Receiver Type: Dual receiver UHF synthesized
 Frequency Response: 50-16.000 Hz (±3dB)
 Dynamic: >100dBu
 Power supply: 15VDC, 300mA (PSU included)
 Carrier Frequency Range: 606-630MHz
 Stability: ±0.005%
 Frequency Deviation: ±225 kHz
 Display Indicator: Channel, Frequency, AF & RF
 Controls: Power On/Off, Volume, Pair, Up/Down
 S/N Ratio: >100 dB
 Dimensions: 45 X 210 X 210mm
 Net. Weight: 1,00 kg

Beltpack for COM-42**D1465****Technical Information**

Beltpack Transmitter	
Input type:	Mini 4-pin XLR
Frequency Response:	50-16.000 Hz
Dynamic:	>100dBu
Sensitivity (1000 Hz):	2,2 mV/Pa* (*1 Pa = 94 dB SPL)
Power supply:	2x Battery UM3, AA1.5V (not included)
Operation time:	>6 hours
Carrier Frequency Range:	606-630MHz
RF Output:	10 mW
Stability:	±0.005%
Frequency Deviation:	±225 kHz
LED Indicator:	Low battery, Power On/Off
Controls:	Power On/Off, Gain
Spurious Rejection:	<-50 dBm
Dimensions:	65 mm x 85 x 25 mm
Net. Weight:	0,09 kg

EDGE EHS-1

D1475B Wireless Handheld System, freq 606-668 MHz

Special features:

- UHF true-diversity receiver with full colour LCD display
- Band Scan function for interference elimination
- Hand-held microphone with OLED display
- High-quality cardioid condenser capsule
- Free and easy operation with clear and pure sound



EDGE EBS-1

D1476B Wireless Beltpack System, Freq 606-668 MHz

Special features:

- UHF true-diversity receiver with full colour LCD display
- Band Scan function for interference elimination
- Belt-pack transmitter with OLED display
- High-quality cardioid condenser headset
- Free and easy operation with clear and pure sound



Technical Information

Sensitivity:	2,2 mV/Pa (@1KHz)
Lifetime:	10 hour
Frequency Band:	606-668 MHz
Connection Output:	XLR + Jack (balanced)
Frequency Response:	60 - 18000 Hz
S/N Ratio:	>100 dB
Polar Pattern:	Cardioid
SPL max:	130 dB
RF Power:	10 mW
Frequency Deviation:	±75 kHz
Stability:	0,0015 %
Spurious Rejection:	>50 dBC
Type Transmitter:	Handheld
Type Receiver:	True Diversity
Power Supply Transmitter:	2x Battery LR6, AA1.5V (not included)
Power Supply Receiver:	External Power Adapter
Dimensions Transmitter:	50 x 254
Dimensions Receiver:	250 x 180 x 43 mm
Weight Transmitter:	0.38 kg
Weight Receiver:	1.11 kg
Power Supply External:	12-15VDC, 800mA

Technical Information

Sensitivity:	1,9 mV/Pa
Lifetime:	10 hour
Connection Input:	Mini 4-pin XLR
Frequency Band:	606-668 MHz
Connection Output:	XLR + Jack (balanced)
Frequency Response:	50 - 19000 Hz
S/N Ratio:	>100 dB
Polar Pattern:	Cardioid
SPL max:	133 dB
RF Power:	10 mW
Frequency Deviation:	±75 kHz
Stability:	0,0015 %
Spurious Rejection:	>50 dBC
Type Transmitter:	Beltpack
Type Receiver:	True Diversity
Power Supply Transmitter:	2x Battery LR6, AA1.5V (not included)
Power Supply Receiver:	External Power Adapter
Dimensions Transmitter:	90 x 65 x 22
Dimensions Receiver:	250 x 180 x 43 mm
Weight Transmitter:	0.11 kg
Weight Receiver:	1.11 kg
Power Supply External:	12-15VDC, 800mA

EDGE EHM-1**D1477B** Handheld microphone

Special features:

- Hand-held microphone with OLED display
- High-quality cardioid condenser capsule
- Free and easy operation with clear and pure sound

**EDGE ED-1****D1485** Antenna Distributor**EDGE EUA-1****D1486** Set of 2 Unidirectional Antennas**EHM-AS1****D1490** Adaptorring**Technical Information**

Sensitivity:	2.2mV/Pa(@1Khz)
Lifetime:	10 hour
Frequency Band:	606-668 MHz
Frequency Response:	60 - 19000 Hz
S/N Ratio:	>100 dB
Polar Pattern:	Cardioid
SPL max:	130 dB
RF Power:	10 mW
Frequency Deviation:	±75 kHz
Stability:	0,0015 %
Spurious Rejection:	>50 dBC
Type Transmitter:	Handheld
Power Supply Transmitter:	2x Battery LR6, AA1.5V (not included)
Dimensions Transmitter:	50 x 254
Weight Transmitter:	0.38 kg

EDGE EBT-1**D1478B** Beltpack transmitter

Special features:

- Belt-pack transmitter with OLED display
- High-quality cardioid condenser headset
- Free and easy operation with clear and pure sound

**Technical Information**

Lifetime:	10 hours
Connection Input:	Mini 4-pin XLR
Frequency Band:	606-668 MHz
Frequency Response:	50 - 19000 Hz
S/N Ratio:	> 100 dB
Polar Pattern:	Cardioid
SPL max:	133 dB
RF Power:	10 mW
Frequency Deviation:	±75 kHz
Stability:	0,0015 %
Spurious Rejection:	>50 dBC
Type Transmitter:	Beltpack
Power Supply Transmitter:	2x Battery LR6, AA1.5V(not included)
Dimensions Transmitter:	90 x 65 x 22
Weight Transmitter:	0.11 kg

EH-1

D1416 Condenser Stage Headset
Microphone

Uni-direction for high-quality voicepick-up.

- Excellent gain-before-feedback and noise isolation.
- Lightweight and hands free design provide great freedom.
- Ergonomic design ensures comfortable wearing.



Technical Information

Type:	Back-Electret Condenser
Polar pattern:	Super Cardioid
Freq. Response:	100-18.000 Hz
Sensitivity (1000 Hz):	3,9 mV/Pa* (*1 Pa = 94 dB SPL)
Max. SPL:	125 dB (1% THD)
Impedance:	220 Ohm ± 30%
Power supply:	5V Phantom from Beltpack
Connector:	110 cm cable with 4p. Mini-XLR (female-type)
Gooseneck:	123 mm
Accessories:	Windscreen Integrated Headset
Dimensions:	mic: Ø 12 mm x L 17 mm
Net. Weight:	0,056 Kg

EH-5

D1440 Condenser Stage Headset
Microphone



Technical Information

Type:	Back-Electret Condenser
Polar pattern:	Cardioid
Freq. Response:	100-18.000 Hz
Sensitivity (1000 Hz):	1,9 mV/Pa* (*1 Pa = 94 dB SPL)
Max. SPL:	127 dB (1% THD)
Impedance:	220 Ohm ± 30%
Power supply:	Phantom from Beltpack
Connector:	110 cm cable with 4p. Mini-XLR (female-type)
Gooseneck:	123 mm
Accessories:	Windscreen
Dimensions:	mic: Ø 12 mm x L 17 mm
Net. Weight:	0,056 kg

Not suitable for use with EB-193B Wireless beltpacks, D145261B or D145282B.
Not suitable for use with ER-126B Wireless beltpacks, D143261B.



EH-3**D1426** Universal Headset Microphone

The EH-3 is a back electret condenser microphone which is suitable for the Eclipse series beltpacks as well other common beltpacks with a 4 pole mini XLR. Due to its fine finishing, the EH-3 is very suitable for theatre and TV applications.

- Compact
- Skin Colour
- Removable extension cable
- Very thin, so nearly invisible.

**EH-4 Head Microphone Skincolor****D1433** detachable cable

The DAP EH-4 is an omni-directional (no proximity effect) condenser microphone designed for voice pick-up. It has a skin colour and is therefore almost invisible for the audience. The wide dynamic range and frequency response provide a high quality sound. The cable is detachable and also separate available.

**Technical Information**

Element:	Back Electret Condenser
Polar pattern:	Omni-directional
Frequency response:	20Hz – 20kHz
Sensitivity:	-45dB + -3dB
Output impedance:	2K Ohm + -30%
SPL Max.:	140dB
Cable:	1,2 mm x 1,2 mm
Connector:	4 pole mini XLR

Spare Cable for EH-3**D1427****Technical Information**

Type:	Back-Electret Condenser
Polar pattern:	Omni-directional
Freq. response:	60-15.000 Hz
Sensitivity (1000 Hz):	1 mv / Pa* (*1 Pa = 94 dB SPL)
Max. SPL:	130 dB (1% THD)
Impedance:	2,2 KOhm ± 30%
Power supply:	Phantom from Beltpack
Connector:	150 cm cable with 4p. Mini-XLR F
Net. Weight:	33g
Dimensions:	mic: Ø 5 mm x L 9 mm
Gooseneck:	125 mm
Accessories:	Windscreen, protection bag

Spare cable for EH-4**D1434**

EL-1**D1415** Condenser Lavalier Microphone

Uni-direction for high-quality voice pick-up.

- Wide dynamic range and frequency response for high quality sound.
- Small size for minimum visibility.
- Together with clothing clip for easy attaching to a tie, lapel, dress etc.

**EL-2****D1419** Miniature Lavalier Microphone for eclipse range.

The DAP EL-2 is an omni-directional (no proximity effect) condenser microphone designed for voice pick-up and various applications. The wide dynamic range and frequency response provide a high quality sound. A clip for easy attaching to a tie, collar, dress, etc. is included.

**Technical Information**

Type:	Back-Electret Condenser
Polar pattern:	Super Cardioid
Freq. Response:	100-18.000 Hz
Sensitivity (1000 Hz):	3,9 mv/Pa* (*1 Pa = 94 dB SPL)
Max. SPL:	125 dB (1% THD)
Impedance:	220 Ohm ± 30%
Power supply:	5V Phantom from Beltpack
Connector:	110 cm cable with 4p. Mini-XLR (female-type)
Accessories:	Windscreen Clothing clip
Dimensions:	mic: Ø 12 mm x L 17 mm
Net. Weight:	0,024 Kg

Technical Information

Type:	Back-Electret Condenser
Polar pattern:	Omni
Freq. response:	60-15.000 Hz
Sensitivity (1000 Hz):	1 mv/Pa* (*1 Pa = 94 dB SPL)
Max. SPL:	130 dB (1% THD)
Impedance:	2,2 kilo-Ohm ± 30%
Power supply:	Phantom from Beltpack
Connector:	150 cm cable with 4p. Mini-XLR (female-type)
Net. Weight:	50 g
Dimensions:	mic: Ø 5 mm x L 9 mm
Accessories:	2 x Windscreen Mounting clip 1 protection bag



GC-1

D1417 Guitar cable for use with Beltpacks of Eclipse Range

Specially designed guitar cable for use with the DAP Eclipse beltpacks.



Technical Information

4P Mini XLR with 6,3 mm phone plug
Length: 800 mm

Rackmount for 1 pc COM-42

D1466



PA-250**D6160** 250W 100V Amplifier

Special features:

- 250W
- Loop through connection
- RCA, XLR, Terminal input
- 24V Back up power input

**PA-500****D6161** 500W 100V Amplifier

Special features:

- 500W
- Loop through connection
- RCA, XLR, Terminal input
- 24V Back up power input



The DAP PA-250 is a 250Watt, 100V plain amplifier. It is a reliable work horse that can be used for many applications. Inputs can be connected with terminals, balanced XLR or unbalanced RCA connectors. A loop through is available to connect external audio processing like equalizing enhancing or feedback killers. The PA-250 can extend a consisting DAP 100V PA system or used for mobile rental applications. It can also be combined with line mixers in a situation where 100V is an extension on a commercial audio installation.

Technical Information

Outputs

Power: 250W
100V & 80hm: Terminals
Loop through: RCA

Inputs

1x Line: RCA, XLR & Terminals

General

Power supply: 230V AC
Back-up power supply: DC 24V
Power consumption: 500W
Power connection: IEC
Dimensions: 483x326x88mm (WxDxH)
Weight: 12 Kg

The DAP PA-500 is a 500Watt, 100V plain amplifier. It is a reliable work horse that can be used for many applications. Inputs can be connected with terminals, balanced XLR or unbalanced RCA connectors. A loop through is available to connect external audio processing like equalizing enhancing or feedback killers. The PA-500 can extend a consisting DAP 100V PA system or used for mobile rental applications. It can also be combined with line mixers in a situation where 100V is an extension on a commercial audio installation.

Technical Information

Outputs

Power: 500W
100V & 80hm: Terminals
Loop through: RCA

Inputs

1x Line: RCA, XLR & Terminals

General

Power supply: 230V AC
Back-up power supply: DC 24V
Power consumption: 1000W
Power connection: IEC
Dimensions: 483x326x88mm (WxDxH)
Weight: 16 Kg

PA-16120 Public Address Amplifier**D6162****Special features:**

- Compact solution
- 16x 120W
- Can be used stereo, parallel or bridged
- Ideal for fixed installations



The DAP PA-16120 is 16x 120W plain amplifier. It is a reliable work horse than can be used for many applications.

The DAP PA-16120 can be used as 16 channel mono amplifier, 8 channel stereo amplifier or as 8 mono channel 100V amplifier.

All inputs can be connected by terminals and the volume can be set on the backside of the amplifier and has a HPF filter. Furthermore each amplifier can be set as 2 channel, parallel or bridged.

Technical Information

Rated Power (1kHz, THD 1%):	120W x 16 / 240W x 8
Output impedance:	80W (4 Ohm) / 120W (8 Ohm) or 100V (42 Ohm)
Input sensitivity:	0dB / 20K Ohm Balanced
Frequency response:	80Hz – 15kHz
T.H.D.:	0.1%
Signal to noise ratio:	90dB
Power:	100–240VAC, 50/60Hz
Weight:	8.8Kg
Dimensions:	483 x 88 x 380mm



PA-530TU**D6150** 30W 100V Amplifier

Special features:

- Compact design
- Media player
- Tuner
- Front line input

The DAP PA-530TU is a compact 30Watt, 100V mixer amplifier with 4 selectable sources and 2 microphone inputs. Both microphone inputs are equipped with phantom power and can also be selected as line input. An integrated speech filter can be applied to improve the audibility. It has one dedicated line input on the backside and a special easy access line/phone front input to connect mp3 players or mobile devices. It has a built-in USB audio player and tuner with a large LCD display which shows the active source, tuner information and ID3 tags. The built-in FM tuner can store 10 presets. The PA-530TU is an all-in-one compact 100V solution for small installations.

**Technical Information**

Outputs

Power:	30W
Zones:	1
100V & 80hm:	Terminals
Line output:	XLR
Loop through:	RCA
Headphones:	6,3mm Jack

Inputs

2x Mic/Line:	XLR/Jack combi & Terminals
1x Line:	RCA
Front input:	3,5mm Jack

Media player

Source:	USB type A
Supported files:	MP3, Wav
Format:	FAT32 up to 32Gb
Playback:	Program, Repeat, Continuous

Tuner

FM band:	87,5 – 108 MHz
Presets:	10
Antenna:	750hm

Features

Speech filter:	-3dB, 300Hz 6db/oct
Phantom power:	18V
Tone Control:	Bass 100 Hz, treble 12 KHz, +/-12dB

General

Power supply:	230V AC
Back-up power supply:	DC 24V
Power consumption:	80W
Power connection:	IEC
Dimensions:	270x262x88mm (WxDxH)
Weight:	6 Kg

The DAP PA-7120 is a 120 Watt, 100V amplifier mixer with 4 selectable sources and 3 microphone inputs. All microphone inputs are equipped with phantom power and can be selected as line input. An integrated speech filter can be applied to improve the audibility. It has 3 dedicated line inputs on the backside and a special easy access line/phone front input to connect mp3 players or mobile devices. The amplifier also has enhanced features such as, priority, chime with adjustable level, emergency input, ducking level control, loop through connection and an output which can be set as line output, music only or microphone only.

PA-7120

D6151 120W 100V Amplifier

Special features:

- 1 Zone
- 7 inputs
- Telephone input
- Chime & Ducking



Technical Information

Outputs

Power: 120W
Zones: 1
100V & 80hm: Terminals
Line output: XLR
Loop through: RCA
Headphones: 6,3mm Jack

Inputs

3x Mic/Line: XLR/Jack combi & Terminals
3x Line: RCA
Front input: 3,5mm Jack

Features

Speech filter: -3dB, 300Hz 6db/oct
Phantom power: 18V
Tone Control: Bass 100 Hz, treble 12 KHz, +/-12dB
Chime: adjustable volume

Ducking:

PTT: adjustable suppression
VOX: Mic input 1
Telephone input: Mic input 2
Override all, terminal

General

Power supply: 230V AC
Back-up power supply: DC 24V
Power consumption: 250W
Power connection: IEC
Dimensions: 483x328x88mm (WxDxH)
Weight: 9 Kg

ZA-7250**D6152** 250W 100V Zone Amplifier

Special features:

- 4 Zones
- 7 inputs
- Telephone input
- Zone line outputs

The DAP PA-7250 is a 240 Watt, 100V amplifier mixer with 4 selectable sources, 3 microphone inputs and 4 zones. All microphone inputs are equipped with phantom power and can be selected as line input. An integrated speech filter can be applied to improve the audibility. It has 3 dedicated line inputs on the backside and a special easy access line/phone front input to connect mp3 players or mobile devices. The amplifier also has enhanced features such as, priority, chime with adjustable level, emergency input, ducking level control, loop through connection and an output which can be set as line output, music only or microphone only. Each zone also has its own line outputs to connect extra amplifiers and extend the PA system.

**Technical Information**

Outputs

Power: 240W
Zones: 4
100V & 80hm:
Line output: Terminals
Loop through: XLR
Headphones: RCA
6,3mm Jack

Inputs

3x Mic/Line: XLR/Jack combi & Terminals
3x Line: RCA
Front input: 3,5mm Jack

Features

Speech filter: -3dB, 300Hz 6db/oct
Phantom power: 18V
Tone Control: Bass 100 Hz, treble 12 KHz, +/-12dB
Chime: adjustable volume
Ducking: adjustable suppression
PTT: Mic input 1
VOX: Mic input 2

Telephone input:

General

Power supply: 230V AC
Back-up power supply: DC 24V
Power consumption: 500W
Power connection: IEC
Dimensions: 483x328x88mm (WxDxH)
Weight: 12 Kg

Override all, terminal

The DAP ZA-9120TU is a 120Watt, 100V mixer amplifier with 7 selectable sources, 3 microphone inputs and 2 zones. All microphone inputs are equipped with phantom power and can also be selected as line input. An integrated speech filter can be applied to improve the audibility. It has 3 dedicated line inputs on the backside and a special easy access line/phone front input to connect mp3 players or mobile devices. It has a built-in USB audio player and tuner with a large LCD display which shows the active source, tuner information and ID3 tags. The built-in FM tuner can store 10 presets. The amplifier also has enhanced features such as, priority, chime with adjustable level, emergency input, ducking level control, loop through connection and an output which can be set as line output, music only or microphone only. Each zone also has its own line outputs to connect extra amplifiers and extend the PA system. The ZA-9120TU is the ideal easy to use one-in-all solution for medium size PA systems.

ZA-9120TU

D6153 120W 100V Zone Amplifier

Special features:

- 2 Zones
- Media player
- Telephone input
- USB on front and backside



Technical Information

Outputs

Power: 120W
Zones: 2
100V & 80hm:
Line output: XLR
Loop through: RCA
Headphones: 6,3mm Jack

Inputs:

3x Mic/Line: XLR/Jack combi & Terminals
3x Line: RCA
Front input: 3,5mm Jack

Media player

Source: 2x USB type A, front/back
Supported files: MP3, Wav
Format: FAT32 up to 32Gb
Playback: Program, Repeat, Continuous

Tuner

FM band: 87,5 – 108 MHz

Presets: 10
Antenna: 750hm

Features

Speech filter: -3dB, 300Hz 6db/oct
Phantom power: 18V
Tone Control: Bass 100 Hz, treble 12 KHz, +/-12dB
Chime: adjustable volume
Ducking: adjustable suppression
PTT: Mic input 1
VOX: Mic input 2
Telephone input: Override all, terminal

General

Power supply: 230V AC
Back-up power supply: DC 24V
Power consumption: 250W
Power connection: IEC
Dimensions: 483x328x88mm (WxDxH)
Weight: 9 Kg

ZA-9250TU**D6154** 250W 100V Zone Amplifier

Special features:

- 4 Zones
- Media player
- Zone line outputs
- USB on front and backside



The DAP ZA-9250TU is a 250Watt, 100V mixer amplifier with 7 selectable sources, 3 microphone inputs and 4 zones. All microphone inputs are equipped with phantom power and can also be selected as line input. An integrated speech filter can be applied to improve the audibility. It has 3 dedicated line inputs on the backside and a special easy access line/phone front input to connect mp3 players or mobile devices. It has a built-in USB audio player and tuner with a large LCD display which shows the active source, tuner information and ID3 tags. The built-in FM tuner can store 10 presets. The amplifier also has enhanced features such as, priority, chime with adjustable level, emergency input, ducking level control, loop through connection and an output which can be set as line output, music only or microphone only. Each zone also has its own line outputs to connect extra amplifiers and extend the PA system. The ZA-9250TU is the ideal easy to use and powerful one-in-all PA system.

Technical Information

Outputs

Power:	250W
Zones:	4
100V & 80hm:	Terminals
Line output:	XLR
Loop through:	RCA
Headphones:	6,3mm Jack

Inputs

3x Mic/Line:	XLR/Jack combi & Terminals
3x Line:	RCA
Front input:	3,5mm Jack

Media player

Source:	2x USB type A, front/back
Supported files:	MP3, Wav
Format:	FAT32 up to 32Gb
Playback:	Program, Repeat, Continuous

Tuner

FM band:	87,5 – 108 MHz
----------	----------------

Presets:	10
Antenna:	750hm

Features

Speech filter:	-3dB, 300Hz 6db/oct
Phantom power:	18V
Tone Control:	Bass 100 Hz, treble 12 KHz, +/-12dB
Chime:	adjustable volume
Ducking:	adjustable suppression
PTT:	Mic input 1
VOX:	Mic input 2
Telephone input:	Override all, terminal

General

Power supply:	230V AC
Back-up power supply:	DC 24V
Power consumption:	500W
Power connection:	IEC
Dimensions:	483x328x88mm (WxDxH)
Weight:	12 Kg

The DAP ZA-9250VTU is a 250Watt, 100V mixer amplifier with 4 zones and built-in separate volume controllers. It has 7 selectable sources and 3 microphone inputs. All microphone inputs are equipped with phantom power and can also be selected as line input. An integrated speech filter can be applied to improve the audibility. It has 3 dedicated line inputs on the backside and a special easy access line/phone front input to connect mp3 players or mobile devices. It has a built-in USB audio player and tuner with a large LCD display which shows the active source, tuner information and ID3 tags. The built-in FM tuner can store 10 presets. The amplifier also has enhanced features such as, priority, chime with adjustable level, emergency input, ducking level control, loop through connection and an output which can be set as line output, music only or microphone only. Each zone also has its own built-in volume controllers and line outputs. The ZA-9250VTU is the ideal control center for a one-in-all zone PA solution.

ZA-9250VTU

D6155 250W 100V Zone volume control amplifier

Special features:

- 4 Zones
- Media player
- Built-in volume controllers
- USB on front & backside



Technical Information

Outputs

Power:	250W
Zones:	4
100V & 80hm:	Terminals
Line output:	XLR
Loop through:	RCA
Headphones:	6,3mm Jack

Inputs

3x Mic/Line:	XLR/Jack combi & Terminals
3x Line:	RCA
Front input:	3,5mm Jack

Media player

Source:	2x USB type A, front/back
Supported files:	MP3, Wav
Format:	FAT32 up to 32Gb
Playback:	Program, Repeat, Continuous

Tuner

FM band:	87,5 – 108 MHz
----------	----------------

Presets:	10
Antenna:	750hm

Features

Speech filter:	-3dB, 300Hz 6db/oct
Phantom power:	18V
Tone Control:	Bass 100 Hz, treble 12 KHz, +/-12dB
Chime:	adjustable volume
Ducking:	adjustable suppression
PTT:	Mic input 1
VOX:	Mic input 2
Telephone input:	Override all, terminal

General

Power supply:	230V AC
Back-up power supply:	DC 24V
Power consumption:	500W
Power connection:	IEC
Dimensions:	483x328x133mm (WxDxH)
Weight:	14 Kg

ZPA-6240TU**D6180** 240W 100V Zone amplifier

Special features:

- 6 Zones with separate volume control
- Media player with USB and SD input
- Digital Message Player built-in

The Dap Audio ZPA-6240TU is a 6 zone 100V amplifier ideal for multi zone public address systems. The amplifier has 240W of total power divided in 6x40W with separate volume controls for each zone. All outputs are protected by an overload and overheat detection system. It is equipped with a MP3 player/recorder with a USB/SD input, a FM-tuner, 4 microphone inputs and 2 line inputs for external audio sources. All inputs have volume, treble and bass controls to set the desired balance and sound quality. The ZPA-6240TU has a digital message player which can store up to 6 pre-recorded messages. These can be controlled by an external control connector or by using the dedicated PM-Six paging microphone. There are 2 dedicated paging microphones available PM-One and PM-Six. The PM-One is a regular paging microphone to do announcements for all zones while the PM-Six has the functionality to do announcements and trigger the pre-recorded audio files on the desired zones. The ZPA-6240TU works on 240VAC but also has a 24VDC input which automatically takes over when mains power shuts down in an emergency situation.

**Technical Information**

Inputs	
4x Mic/Line:	XLR/Jack combi & Terminals
2x Line:	RCA
Media player	
Source:	1x USB type A, 1x SD Card
Supported files:	MP3 , 48kHz, 320kbps
Format:	FAT16/FAT32 up to 32Gb
Playback:	Repeat, Continuous
Tuner	
FM band:	87,5 – 108 MHz
Presets:	4
Antenna:	75Ohm

Features	
Speech filter:	-3dB, 300Hz 6db/oct
Phantom power:	24V
Tone Control:	Bass 100 Hz, treble 10 KHz, +/-10dB
Chime:	adjustable volume
PTT:	Mic input 1
VOX:	Mic input 2
Telephone input:	Override all, terminal

General	
Power supply:	220~240VAC, 50/60Hz
Back-up power supply:	DC 24V 20A
Power consumption:	340W
Power connection:	IEC
Dimensions:	483x328x133mm (WxDxH)
Weight:	16 Kg



MA-8120 Matrix Amplifier

D6195

Special features:

- Matrix system
- Up to 4 external wall panels
- 8 inputs
- 4 independent digital 120W amplifiers

The DAP MA-8120 is a compact but powerful matrix amplifier with 8 selectable sources which can be connected to 4 independent outputs. All microphones are equipped with phantom power and also can be selected as line input. The first microphone channel has a talk-over function and a 3-way tone control. The gain levels for all inputs can be set at the backside which secures the system to nonprofessional operators.

On the front there is a speaker which acts as monitor and which can be used as PFL as well as AFL.

A dedicated paging microphone with chime and zone select function are optional.

Furthermore the DAP MA-8120 can connect up to 4 external wall panels (optional) with which you can control the volume or connect an extra source (Line or Mic).

The DAP MA-8210 has four built-in amplifiers of 120W each. The volume of each amplifier can be controlled independently. Furthermore each output has a 2-way tone control and a mute function.

The DAP MA-8210 is the ideal all-in-one solution for your multi-zone installation which requires extended and complete control.

Technical Information

Outputs	
Power:	4x 120W
Zones:	4
Tone control:	High: 10KHz, Low 100Hz +/- 15dB
100V or 70V:	Terminals
Line output:	Terminals
Loop through:	N/A
Headphones:	N/A
Inputs	
4x Mic/Line:	XLR & Stereo Jack connectors
4x Line:	RCA & Mono Jack connectors
Front input:	N/A
Features	
Phantom power:	+48V
Tone Control:	Low 80 Hz, Mid: 2,5kHz, High 12 KHz, +/-15dB
Mic input:	-60dB - -16dB / 20KOhm, Balanced

Line input:	-20dB - +4dB / 20KOhm Balanced
Remote input:	0B / 600Ohm Balanced
Frequency response:	20Hz - 20KHz
THD:	< 0,1%

General	
Power supply:	230VAC, 50Hz
Back-up power supply:	N/A
Power consumption:	500W
Power connection:	IEC
Dimensions:	483 x 328 x 88mm (WxDxH)
Weight:	9 Kg

Accessories	
MA8120WP	Dedicated wall panel (not included)
MA-8120PM	Paging Microphone (not included)

HS-15S**D6541** 15 Watt Square Horn Speaker**Technical Information**

Line voltage: 100V
 Power taps: 1,9/3,8/7,5/15W
 Impedance: 80hm
 Frequency response: 300-8KHz
 Sensitivity: 105dB
 Material: ABS
 IP rating: IP 66
 Colour: light gray
 Dimensions (LxWxH): 222 x 162 x 232mm
 Weight: 1,4Kg

HS-30S**D6540** 30 Watt Square Horn Speaker**Technical Information**

Line voltage: 100V
 Power taps: 3,8/7,5/15/30W
 Impedance: 80hm
 Frequency response: 350-8KHz
 Sensitivity: 105dB
 Material: ABS
 IP rating: IP 66
 Colour: light gray
 Dimensions (LxWxH): 285 x 280 x 205mm
 Weight: 1,84Kg

HS-30R**D6542** 30 Watt Round Horn Speaker**Technical Information**

Line voltage: 100V
 Power taps: 3,8/7,5/15/30W
 Impedance: 80hm
 Frequency response: 380-6,5KHz
 Sensitivity: 107dB
 Material: Aluminium
 IP rating: IP 66
 Colour: light gray
 Dimensions (LxWxH): 246 x 292 x 292mm
 Weight: 2,1Kg

**HS-50R****D6543** 50 Watt Round Horn Speaker**Technical Information**

Line voltage:	100V
Power taps:	6,25/12,5/25/50W
Impedance:	160hm
Frequency response:	380-6,5KHz
Sensitivity:	109dB
Material:	Aluminium
IP rating:	IP 66
Colour:	light gray
Dimensions (LxWxH):	350 x 325 x 325mm
Weight:	3Kg

MHS-30S

D6544 30 Watt Music Horn Speaker



Technical Information

Line voltage:	100V
Power taps:	3,8/7,5/15/30W
Impedance:	80hm
Frequency response:	100-10KHz
Sensitivity:	97dB
Material:	ABS
IP rating:	IP 66
Colour:	Light grey
Dimensions (LxWxH):	363 x 253 x 310mm
Weight:	3,9Kg

MHS-50S**D6545** 50 Watt Music Horn Speaker**MHS-80S****D6546** 80 Watt Music Horn Speaker**H-100****D6547H** Round Horn for D100

Dedicated horn for the DAP audio D100, 100W driver.

**D-100****D6547D** 100W Driver

100W 100V Separate driver without horn. Use the dedicated H-500 horn to create a powerful 100V projector.

**Technical Information**

Line voltage: 100V
 Power taps: 4,5/9/12,5/25/50W
 Impedance: 80hm
 Frequency response: 90-20KHz
 Sensitivity: 99dB
 SPL 1W/1m: 98 dB
 Max SPL 1m: 113 dB
 Vertical dispersion: 140°
 Horizontal dispersion: 105°
 Woofer size: 6,5"
 Tweeter size: 1"
 Loudspeaker system: 2-way
 Material: ABS
 IP rating: IP 66
 Colour: light gray
 Dimensions (LxWxH): 363 x 253 x 310mm
 Weight: 3,9Kg

Technical Information

Line voltage: 100V
 Power taps: 10/20/40/80W
 Impedance: 8 0hm
 Frequency response: 90 - 20kHz
 Sensitivity: 99 dB
 Material: ABS
 IP Rating: IP66
 Colour: Light Gray
 Dimensions: 348 x 348 x 288mm
 Weight: 4,7 kg

Technical Information

Material: Aluminium
 Colour: Light grey
 Length: 370mm
 Diameter: 500mm
 Thread: M14
 Weight: 1.9Kg

Technical Information

Line voltage: 100V
 Power taps: 50/100W
 Impedance: 160hm
 Frequency response: 150-6KHz
 Sensitivity: 110dB
 Material: Aluminium
 Thread: M14
 IP rating: IP 66
 Colour: light gray
 Dimensions (LxWxH): 169 x 143 x 143mm
 Weight: 3.2Kg

EVO 4T

D3680 Set of 2 pcs - 100V 16W Black

D3681 Set of 2 pcs - 100V 16W White

Special features:

- IP 54 Protection Rate
- Multi angled Brackets
- Fast and easy installation
- 100V Power taps & Low impedance

EVO 5T

D3682 Set of 2 pcs - 100V 16W Black

D3683 Set of 2 pcs - 100V 16W White

Special features:

- IP 54 Protection Rate
- Multi angled Brackets
- Fast and easy installation
- 100V Power taps & Low impedance



Technical Information

Speaker system:	2-way Full Range 100V
Continues power:	40 Watt
Peak power:	80 Watt
Impedance:	8 Ohms
Sensitivity W/m:	88dB
LF Driver:	4"
HF Driver:	0,5" Dome Tweeter
Dispersion:	110 x90° HxVva
Frequency Response:	100Hz-20.000Hz (-3dB)
Line Transformer taps:	2W-4W-8W-16W
Transformer:	70V / 100V
Mounting:	60° Multi angled bracket
Connection:	Terminals
Construction:	ABS
Grill material:	Steel
Dimensions:	195 x 126 x 127mm
Weight:	1,8 Kg
Approvals:	CE
IP Rating:	54

Technical Information

Speaker system:	2-way Full Range 100V
Continues power:	60 Watt
Peak power:	120 Watt
Impedance:	8 Ohm
Sensitivity W/m:	89dB
LF Driver:	5,25"
HF Driver:	0,5" Dome Tweeter
Dispersion:	110 x90° HxV
Frequency Response:	80Hz-20.000Hz (-3dB)
Line Transformer taps:	2W-4W-8W-16W
Transformer:	70V / 100V
Mounting:	60° Multi angled bracket
Connection:	Terminals
Construction:	ABS
Grill material:	Steel
Dimensions:	252 x 163 x 163mm
Weight:	2,7 Kg
Approvals:	CE
IP Rating:	54

EVO 6T**D3684** Set of 2 pcs - 100V 32W Black**D3685** Set of 2 pcs - 100V 32W White

Special features:

- IP 54 Protection Rate
- Multi angled Brackets
- Fast and easy installation
- 100V Power taps & Low impedance

**EVO 8T****D3686** Set of 2 pcs - 100V 50W Black**D3687** Set of 2 pcs - 100V 50W White

Special features:

- IP 54 Protection Rate
- Multi angled Brackets
- Fast and easy installation
- 100V Power taps & Low impedance

**Technical Information**

Speaker system:	2-way Full Range 100V
Continues power:	70 Watt
Peak power:	140 Watt
Impedance:	8 Ohm
Sensitivity W/m:	90dB
LF Driver:	6,5"
HF Driver:	1" Dome Tweeter
Dispersion:	110 x90° HxV
Frequency Response:	50Hz-20.000Hz (-3dB)
Line Transformer taps:	4W-8W-16-32W
Transformer:	70V / 100V
Mounting:	60° Multi angled bracket
Connection:	Terminals
Construction:	ABS
Grill material:	Steel
Dimensions:	302 x 196 x 193mm
Weight:	3,7 Kg
Approvals:	CE
IP Rating:	54

Technical Information

Speaker system:	2-way Full Range 100V
Continues power:	80 Watt
Peak power:	160 Watt
Impedance:	8 Ohm
Sensitivity W/m:	90dB
LF Driver:	8"
HF Driver:	1" Dome Tweeter
Dispersion:	110 x90° HxV
Frequency Response:	48Hz-20.000Hz (-3dB)
Line Transformer taps:	6.25W-12,5W-25W-50W
Transformer:	70V / 100V
Mounting:	60° Multi angled bracket
Connection:	Terminals
Construction:	ABS
Grill material:	Steel
Dimensions:	385 x 250 x 227mm
Weight:	5,1 Kg
Approvals:	CE
IP Rating:	54

WMS-40B**D6556** 40W Black Wallmount Music Speaker**Technical Information**

Power taps:	100 Volt: 5W/10W/20W/40W, 70 Volt: 2,5W/5W/10W/20W/40W
Impedance:	40hm
Frequency response:	90-20KHZ
Sensitivity:	90dB
Material:	ABS
Colour:	Black
IP rating:	IP-40
Dimensions (LxWxH):	350 x 135 x 260mm
Weight:	3Kgv

WMS-BB**D6558** Black Bracket
for 4 pcs WMS-40 speakers**WMS-WB****D6559** White Bracket
for 4 pcs WMS-40 speakers

WMS-40W**D6557** 40W White Wallmount Music Speaker**Technical Information**

Power taps:	100 Volt: 5W/10W/20W/40W, 70 Volt: 2,5W/5W/10W/20W/40W
Impedance:	40hm
Frequency response:	90-20KHZ
Sensitivity:	90dB
Material:	ABS
Colour:	White
IP rating:	IP-40
Dimensions (LxWxH):	350 x 135 x 260mm
Weight:	3Kgv



PSU-510P

D6550 10 Watt 5" Unidirectional projector speaker



Technical Information

Line voltage: 100V
 Power taps: 2,5/5/10W
 Frequency response: 130-15KHz
 Sensitivity: 91dB
 IP rating: IP 55
 Material: ABS
 Colour: snow white
 Dimensions (LxWxH): 205 x 138 x 138mm
 Weight: 1,4Kg

PSU-510M

D6553 10 Watt 5" Unidirectional projector speaker



Technical Information

Line voltage: 100V
 Power taps: 2,5/5/10W
 Frequency response: 130-15KHz
 Sensitivity: 91dB
 IP rating: IP 55
 Material: Aluminium
 Colour: Ivory White
 Dimensions (LxWxH): 205 x 138 x 138
 Weight: 2,2Kg

PSB-510P

D6552 10 Watt 5" Bidirectional projector speaker



Technical Information

Line voltage: 100V
 Power taps: 3/6/12W
 Frequency response: 130-15KHz
 Sensitivity: 91dB
 IP rating: IP 55
 Material: ABS
 Colour: Snow White
 Dimensions (LxWxH): 200 x 138 x 138mm
 Weight: 1,7Kg

PSB-510M

D6555 10 Watt 5" Bidirectional projector speaker



Technical Information

Line voltage: 100V
 Power taps: 2,5/5/10W
 Frequency response: 130-15KHz
 Sensitivity: 92dB
 IP rating: IP 55
 Material: Aluminium
 Colour: Ivory White
 Dimensions (LxWxH): 205 x 138 x 138mm
 Weight: 2,4Kg

**PSU-620P**

D6551 20 Watt 6" Unidirectional projector speaker

**Technical Information**

Line voltage: 100V
 Power taps: 5/10/20W
 Frequency response: 110-15KHz
 Sensitivity: 92dB
 IP rating: IP 55
 Material: ABS
 Colour: Snow White
 Dimensions (LxWxH): 245 x 170 x 170mm
 Weight: 1,9Kg

PSU-620M

D6554 20 Watt 6" Unidirectional projector speaker

**Technical Information**

Line voltage: 100V
 Power taps: 5/10/20W
 Frequency response: 110-15KHz
 Sensitivity: 92dB
 IP rating: IP 55
 Material: Aluminium
 Colour: Ivory White
 Dimensions (LxWxH): 252 x 170 x 170mm
 Weight: 2,8Kg

SS-105

D6563 10W 5" Spherical Speaker



Technical Information

Line voltage: 100V
 Power taps: 2,5/5/10W
 Speaker size: 5 inch
 Frequency response: 150 – 15kHz
 Sensitivity: 92dB
 Material: HIPS
 Colour: White
 Ip rating: IP55
 Dimensions (LxWxH): 194 x 194 x 170
 Weight: 1,1Kg

SS-208

D6564 20W 8" Spherical Speaker



Technical Information

Line voltage: 100V
 Power taps: 5/10/20W
 Speaker size: 8 inch
 Frequency response: 80 - 18kHz
 Sensitivity: 92dB
 Horizontal Dispersion: 360°
 Vertical Dispersion: 120°
 Material: ABS
 Colour: White
 Ip rating: IP55
 Dimensions (LxWxH): 254 x 254 x 254mm
 Weight: 2,2Kg

SS-306

D6565 30W 6" 2 Way Spherical Speaker



Technical Information

Line voltage: 100V
 Power taps: 7,5/15/30W
 Speaker size: 6 inch
 Frequency response: 110 - 18kHz
 Sensitivity: 92dB
 Horizontal Dispersion: 360°
 Vertical Dispersion: 120°
 Material: ABS
 Colour: White
 Ip rating: IP55
 Dimensions (LxWxH): 378 x 378 x 302
 Weight: 2,2Kg

HS-510P**D6568** 10W 5" Hanging Speaker**Technical Information**

Line voltage: 100V
 Power taps: 2,5/5/10W
 Speaker size: 5 inch
 Frequency response: 130 – 15kHz
 Sensitivity: 91dB
 Directivity: 130°conical
 Material: ABS
 Colour: White
 IP rating: IP55
 Dimensions (LxWxH): 138 x 138 x 205mm
 Weight: 1,5Kg

HS-620P**D6566** 20W 6" Hanging Speaker**Technical Information**

Line voltage: 100V
 Power taps: 5/10/20W
 Speaker size: 6 inch
 Frequency response: 110 - 15kHz
 Sensitivity: 92dB
 Directivity: 130°conical
 Material: ABS
 Colour: White
 Ip rating: IP55
 Dimensions (LxWxH): 170 x 170 x 245mm
 Weight: 1,7Kg

HS-510M**D6569** 10W 5" Hanging Speaker**Technical Information**

Line voltage: 100V
 Power taps: 2,5/5/10W
 Speaker size: 5 inch
 Frequency response: 130 – 15kHz
 Sensitivity: 91dB
 Directivity: 140°conical
 Material: Aluminium
 Colour: White
 IP rating: IP55
 Dimensions (LxWxH): 138 x 138 x 205mm
 Weight: 2,1Kg

HS-620M**D6567** 20W 6" Hanging Speaker**Technical Information**

Line voltage: 100V
 Power taps: 5/10/20W
 Speaker size: 6 inch
 Frequency response: 110 – 15kHz
 Sensitivity: 92dB
 Directivity: 140°conical
 Material: Aluminium
 Colour: White
 IP rating: IP55
 Dimensions (LxWxH): 170 x 170 x 252mm
 Weight: 2,8Kg

CS-330

D6562 30W Column Speaker 4 x 3"



Technical Information

Line voltage: 100V
 Max Power: 30W
 Power taps: 10/20W
 Frequency response: 170 - 15 kHz
 Sensitivity: 91dB
 Material: Aluminium
 Colour: White
 IP rating: IP44
 Dimensions (LxWxH): 405 x 106 x 75mm
 Weight: 2Kg

CS-360

D6561 60W Column Speaker 8 x 3"



Technical Information

Line voltage: 100V
 Max Power: 60W
 Power taps: 20/40W
 Frequency response: 170 - 15kHz
 Sensitivity: 93dB
 Material: Aluminium
 Colour: White
 IP rating: IP44
 Dimensions (LxWxH): 691 x 106 x 75mm
 Weight: 3,5Kg

SCS-230

D6612 30W 4x 2" Column speaker slim line



Technical Information

Power taps: 30/15/7.5W
 Line Voltage: 100V
 Impedance: 6.8Ω
 Speaker size: 4x2 + 1x1 inch
 Frequency response: 180-18kHz
 Sensitivity: 91dB
 Material: Aluminium
 Colour: White
 IP rating: IP-44
 Dimensions (LxWxH): 405 x 74.5 x 69
 Weight: 1.7Kg

SCS-250

D6613 50W 10x2" Column speaker



Technical Information

Power taps: 50/25/12.5W
 Line Voltage: 100V
 Impedance: 20Ω
 Speaker size: 10x2 + 1x1 inch
 Frequency response: 180-18kHz
 Sensitivity: 91dB
 Material: Aluminium
 Colour: White
 IP rating: IP-44
 Dimensions (LxWxH): 802 x 74.5 x 69
 Weight: 3.5Kg



GS-520

D6611 20W 5" Garden speaker



Technical Information

Power taps: 20/10
 Line Voltage: 100V
 Impedance: 6.8Ω
 Speaker size: 5inch
 Frequency response: 80-15kHz
 Sensitivity: 95dB
 Material: ABS
 Colour: Green
 IP rating: IP-65
 Dimensions (LxWxH): 215 x 215 x 245
 Weight: 2.04Kg

GS-630

D6610 30W 6" Garden speaker



Technical Information

Power taps: 30/15/7.5W
 Line Voltage: 100V
 Impedance: 6.8Ω
 Speaker size: 6inch
 Frequency response: 80-20kHz
 Sensitivity: 90dB
 Material: ABS
 Colour: Green
 IP rating: IP-65
 Dimensions (LxWxH): 325 x 325 x 340
 Weight: 3Kg



DCS-4220

D6578 20W 4" 2 Way Design Ceiling Speaker



DCS-5230

D6579 20W 5" 2 Way Design Ceiling Speaker



DCS-6230

D6580 30W 6" 2 Way Design Ceiling Speaker



DCS-8240

D6581 8" 40W Design Ceiling Speaker



Technical Information

Power Taps: 5/10/20W
 Line Voltage: 100V
 Impedance: 8Ω
 Speaker size LF: 4 inch (rubber edge)
 Speaker size HF: 0,5 inch
 Frequency response: 110-20kHz
 Sensitivity: 88dB +/- 3dB
 Directivity: 130°conical
 Material: ABS
 Colour: White
 IP rating: IP-40
 Mounting Hole: ø160mm
 Dimensions (LxWxH): 180 x 180 x 80
 Weight: 1Kg

Technical Information

Power Taps: 5/10/20W
 Line Voltage: 100V
 Impedance: 8Ω
 Speaker size LF: 5 inch (rubber edge)
 Speaker size HF: 0,5 inch
 Frequency response: 100-20kHz
 Sensitivity: 88dB +/- 3dB
 Directivity: 130°conical
 Material: ABS
 Colour: White
 IP rating: IP-40
 Mounting Hole: ø180mm
 Dimensions (LxWxH): 203 x 203 x 85
 Weight: 1,1Kg

Technical Information

Power Taps: 7,5/15/30W
 Line Voltage: 100V
 Impedance: 8Ω
 Speaker size LF: 6 inch (foam edge)
 Speaker size HF: 0,5 inch
 Frequency response: 90-20kHz
 Sensitivity: 88dB +/- 3dB
 Directivity: 130°conical
 Material: ABS
 Colour: White
 IP rating: IP-40
 Mounting Hole: ø200mm
 Dimensions (LxWxH): 232 x 232 x 90
 Weight: 1,4Kg

Technical Information

Power taps: 40/20/10W
 Line Voltage: 100V
 Impedance: 5.8Ω
 Speaker size LF: 8inch
 Speaker size HF: 1inch
 Frequency response: 50-20kHz
 Sensitivity: 90dB
 Material: ABS
 Colour: White
 IP rating: IP-40
 Mounting Hole: ø245mm
 Dimensions (LxWxH): 281 x 110
 Weight: 2.61Kg

**EDCS-526****D6592B** 5" Ceilingspeaker Black**D6592W** 5" Ceilingspeaker White

Special features:

- Excellent price performance ratio
- Modern and stylish design
- Magnetic cover for easy installation and maintenance

**Technical Information**

Weight:	0.5 kg
Dimensions LxWxH:	160 x 54 mm
Housing:	ABS
IP Rating:	20
Mounting Hole:	145 mm
Sensitivity:	93
Impedance:	72 kΩ
SPL max @1m:	97 dB
Power Taps:	3/6 W
Power Max.:	6 W
Frequency Response:	100 - 15k Hz
Dispersion:	360 x 180 °
Line Voltage:	100 V

EDCS-626**D6593B** 6" Ceilingspeaker Black**D6593W** 6" Ceilingspeaker White

Special features:

- Modern and stylish design
- Magnetic cover for easy installation and maintenance
- Excellent price performance ratio

**Technical Information**

Weight:	0.76 kg
Dimensions LxWxH:	186 x 74 mm
Housing:	ABS
IP Rating:	20
Mounting Hole:	170 mm
Sensitivity:	93
Impedance:	0.072 kΩ
SPL max @1m:	97 dB
Power Taps:	3/6 W
Power Max.:	6 W
Frequency Response:	100 - 15k Hz
Dispersion:	360 x 180 °
Line Voltage:	100 V

EDCS-8210**D6594W** 8" Ceilingspeaker White**D6594B** 8" Ceilingspeaker Black**Special features:**

- Excellent price performance ratio
- Modern and stylish design
- Magnetic cover for easy installation and maintenance

**Technical Information**

Weight:	1 kg
Dimensions LxWxH:	232 x 90 mm
Housing:	ABS
IP Rating:	20
Mounting Hole:	210 mm
Sensitivity:	93
Impedance:	0.072 kΩ
SPL max @1m:	97 dB
Power Taps:	5/10 W
Power Max.:	10 W
Frequency Response:	100 - 15k Hz
Dispersion:	360 x 180 °
Line Voltage:	100 V

CS-36

D6574 6W 3" Ceiling Speaker



CS-4230BC

D6571 20W 4" 2 Way Ceiling Speaker Back Can



CS-6230BC

D6570 30W 5" 2 Way Ceiling Speaker Back Can



DCS-6230BC

D6586 30W 6" 2 Way Design Ceiling Speaker Back Can



Technical Information

Rated power: 6W
 Line Voltage: 100V
 Speaker size: 3 inch
 Frequency response: 120-20kHz
 Sensitivity: 87dB
 Directivity: 140°conical
 Material: ABS
 Colour: White
 IP rating: IP-40
 Mounting Hole: ø95mm
 Dimensions (LxWxH): 103 x 103 x 80
 Weight: 0,4Kg

Technical Information

Power taps: 20/10/5/2,5W
 Line Voltage: 100V/70V
 Impedance: 8Ω
 Speaker size: 4 inch
 Frequency response: 70-20kHz
 Sensitivity: 87dB
 Directivity: 130°conical
 Material: ABS
 Colour: White
 IP rating: IP-40
 Mounting Hole: ø180mm
 Dimensions (LxWxH): 220 x 220 x 165
 Weight: 1,8Kg

Technical Information

Power taps: 30/15/7,5/3,8W
 Line Voltage: 100V/70V
 Impedance: 8Ω
 Speaker size: 5 inch
 Frequency response: 80-20kHz
 Sensitivity: 88dB
 Directivity: 130°conical
 IP rating: IP-40
 Material: ABS
 Colour: White
 IP rating: IP-40
 Mounting Hole: ø210mm
 Dimensions (LxWxH): 245 x 245 x 150
 Weight: 2Kg

Technical Information

Power taps: 30/15/7.5/3.75W
 Impedance: 8Ω
 Line Voltage: 100V
 Speaker size LF: 6,5inch
 Speaker size HF: 1inch
 Frequency response: 60-20kHz
 Sensitivity: 88dB
 Material: ABS
 Colour: White
 IP rating: IP-55
 Mounting Hole: ø240mm
 Dimensions (LxWxH): 267 x 162
 Weight: 2.7Kg

CS-56**D6573** 6W 5" Ceiling Speaker**CS-520****D6582** 20W 5" Ceiling Speaker**CS-66****D6572** 6W 6" Ceiling Speaker**CS-620****D6583** 20W 6" Ceiling Speaker**Technical Information**

Rated Power: 3/6W
 Line Voltage: 100V
 Impedance: 8Ω
 Speaker size: 5 inch
 Frequency response: 110-15kHz
 Sensitivity: 90dB
 Directivity: 140°conical
 Material: Iron
 Colour: White
 IP rating: IP-40
 Mounting Hole: ø170mm
 Dimensions (LxWxH): 200 x 200 x 67
 Weight: 0,7Kg

Technical Information

Power taps: 20/10/5W
 Line Voltage: 100V
 Impedance: 8Ω
 Speaker size: 5inch
 Frequency response: 110-15kHz
 Sensitivity: 94dB
 Material: ABS
 Colour: White
 IP rating: IP-20
 Mounting Hole: ø 170mm
 Dimensions (LxWxH): 200 x 67
 Weight: 0.7 KG

Technical Information

Rated Power: 6W
 Line Voltage: 100V
 Impedance: 8Ω
 Speaker size: 6 inch
 Frequency response: 110-15kHz
 Sensitivity: 90dB
 Directivity: 140°conical
 Material: Iron
 Colour: White
 IP rating: IP-40
 Mounting Hole: ø225mm
 Dimensions (LxWxH): 245 x 245 x 75
 Weight: 1Kg

Technical Information

Power taps: 20/10/5W
 Line Voltage: 100V
 Impedance: 8Ω
 Speaker size: 6inch
 Frequency response: 110-15kHz
 Sensitivity: 94dB
 Material: ABS
 Colour: White
 IP rating: IP-20
 Mounting Hole: ø 225mm
 Dimensions (LxWxH): 245 x 75
 Weight: 1 KG

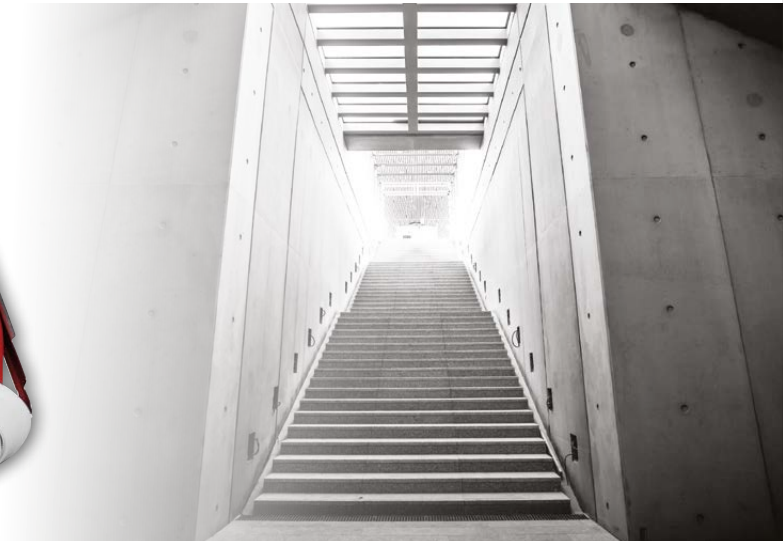
FCS-56

D6576 6W 5" Fireproof Ceiling Speaker



FCS-66

D6575 6W 6" Fireproof Ceiling Speaker



Technical Information

Power taps: 0,75/1,5/3/6W
 Line Voltage: 100V
 Speaker size: 5 inch
 Frequency response: 130-15kHz
 Sensitivity: 92dB
 Material: Iron
 Colour: White
 IP rating: IP-40
 Mounting Hole: ø160mm
 Dimensions (LxWxH): 180 x 180 x 127
 Weight: 1,3Kg

Technical Information

Power taps: 0,75/1,5/3/6W
 Line Voltage: 100V
 Speaker size: 6 inch
 Frequency response: 120-18kHz
 Sensitivity: 92dB
 Material: Iron
 Colour: White
 IP rating: IP-40
 Mounting Hole: ø204mm
 Dimensions (LxWxH): 230 x 230 x 127
 Weight: 1,7Kg

CS-850S

D6588 50W 8" Ceiling Subwoofer



Technical Information

Power taps: 100V/70V/50W Red/30W Brown/15W Yellow /5W Green/3W White
 Impedance: 8Ω
 Line Voltage: 100V
 Speaker size LF: 8"
 Frequency response: 28-200Hz
 Sensitivity: 90dB
 Material: ABS
 Colour: White
 IP rating: IP-20
 Mounting Hole: ø 230 mm
 Dimensions (Diameter x H): 260mm x 165mm
 Weight: 3 Kg



CST-6506

D6590 6,5", 6W ceiling speaker EN
54-24

**CST-6520**

D6591 6,5", 20W ceiling speaker EN
54-24

**WCS-46**

D6577 6W 4" Waterproof Ceiling
Speaker IP55

**WS-6W**

D6560 6W Wall mount speaker white

**Technical Information**

Speaker: 6,5" full-range speaker
Power: 6W
Sensitivity: 92 dB (1W,1m)(100 Hz - 10 kHz, pink noise)
79dB (1W, 4m)(100 Hz - 10 kHz, pink noise)
Frequency response: 110 Hz – 20 kHz
Max. sound level: 85dB (6W,4m)(100 Hz - 10 kHz, pink noise)
Weight: 0,88 Kg
Dimensions: 199 x 74 mm
Mounting hole: 164 mm
Finish: steel painted baffle, grill and housing. Fire dome: 5VB plastic

Technical Information

Speaker: 6,5" full-range speaker
Power: 20W
Sensitivity: 92 dB (1W,1m)(100 Hz - 10 kHz, pink noise)
79dB (1W, 4m)(100 Hz - 10 kHz, pink noise)
Frequency response: 95 Hz – 20 kHz
Max. sound level: 88dB (20W,4m)(100 Hz - 10 kHz, pink noise)
Weight: 1,12 Kg
Dimensions: 199 x 74 mm
Mounting hole: 164 mm
Finish: steel painted baffle, grill and housing. Fire dome: 5VB plastic

Technical Information

Rated Power: 6W
Line Voltage: 100V
Frequency response: 150-18kHz
Sensitivity: 91dB
Material: ABS
Colour: White
IP rating: IP55
Mounting Hole: ø125mm
Dimensions (LxWxH): 140 x 140 x 130
Weight: 0,9Kg

Technical Information

Rated Power: 6W
Line Voltage: 100V
Speaker size: 5 inch
Frequency response: 130-17kHz
Sensitivity: 92dB
Material: HIPS
Colour: White
IP rating: IP-40
Dimensions (LxWxH): 260 x 162 x 77mm
Weight: 1Kg

VCB-6

D6531 6W built in volume controller



Technical Information

Power: 6W
 Material: ABS
 Colour: White
 Mounting Hole: 48mm
 Dimensions (LxWxH): 80 x 80mm
 Weight: 0,10 kg

VCB-12

D6532 12W built in volume controller



Technical Information

Power: 12 W
 Material: ABS
 Colour: White
 Mounting Hole: 48mm
 Dimensions (LxWxH): 80 x 80mm
 Weight: 0,19kg

VCB-36

D6533 36W built in volume controller



Technical Information

Power: 36 W
 Material: ABS
 Colour: White
 Mounting Hole: 48mm
 Dimensions (LxWxH): 80 x 80mm
 Weight: 0,21kg

CB-1

D6536 1 Unit cover box for volume controller

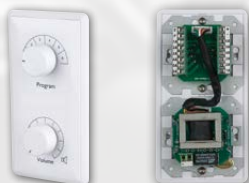


Technical Information

Material: ABS
 Colour: White
 Dimensions (LxWxH): 83 x 83 x 51mm
 Weight: 0,05 kg

VPC-12

D6534 12W built in volume & program controller

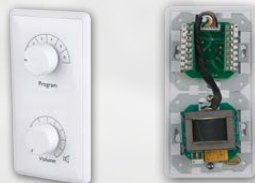


Technical Information

Power: 12 W
 Material: ABS
 Colour: White
 Mounting Hole: 50mm
 Dimensions (LxWxH): 154 x 80mm
 Weight: 0,18 kg

VPC-36

D6535 36W built in volume & program controller



Technical Information

Power: 36 W
 Material: ABS
 Colour: White
 Mounting Hole: 50mm
 Dimensions (LxWxH): 154 x 80mm
 Weight: 0,21kg

CB-2

D6537 2 Units cover box for volume controller



Technical Information

Material: ABS
 Colour: White
 Dimensions (LxWxH): 157 x 83 x 51mm
 Weight: 0,05 kg

VCR-650

D6538 6 x 50W Rackmount 100V Volume controller



Technical Information

Line input: 100V
 Material: Aluminium
 Colour: Black
 Dimensions (LxWxH): 483 x 190 x 100 mm
 Weight: 3,3 kg

PM-160**D6191** Announcement microphone with Chime

Special features:

- Mic- volume adjustable on backside
- Chime volume adjustable on backside
- Talk button on upside
- Built-in four tone Chime

**Technical Information**

Microphone unit:	Condenser
Freq response:	22 Hz – 23 KHz
Sensitivity:	29dB @ 1kHz
Balanced output:	230mV
Unbalanced output:	110mV
Dimensions:	132x155x380mm
Weight:	0,7Kg



PM-One**D6181** One zone paging mic for ZPA-6240TU

Special features:

- Set Chime or Priority by dip-switch
- Master/Slave selection switch on backside
- Push-to-Talk button on upside

**Technical Information**

Microphone unit:	Condenser
Freq response:	22 Hz – 23 KHz
Sensitivity:	29dB @ 1kHz
Audio output:	230mV
Dimensions base:	162 x 150 x 57mm
Dimensions mic:	430 x 20mm
Connections:	2x RJ45
Weight:	0,6Kg

PM-Six**D6182** Six zone paging mic for ZPA-6240TU

Special features:

- Broadcasting Zone selector
- Digital Messaging user buttons
- Master/Slave selection switch on backside
- Push-to-Talk button on upside
- Direct AUX-in by RCA connectors

**Technical Information**

Microphone unit:	Condenser
Freq response:	22 Hz – 23 KHz
Sensitivity:	29dB @ 1kHz
Audio output:	230mV
Dimensions base:	165 x 200 x 57mm
Dimensions mic:	430 x 20mm
Weight:	1,0Kg



MA8120PM Paging Mic

D6197

Special features:

- Zone selection
- Chime Switch
- Level Control
- Easy to connect with RJ45



Technical Information

Rated output level:	0dB / 6000hm Balanced
Input sensitivity:	-60dB / 6000hm Balanced
Frequency response:	45Hz – 15kHz
T.H.D. :	< 0,1%
Number of zone:	4 Zone
Weight:	0,9 Kg
Dimensions:	140 x 60 x 205mm (only body)



MA-8120WP Wall Control

D6196





Vestastraat 2, 6468 EX Kerkrade,
The Netherlands.

Phone Sales: +31 - (0)45 - 5667701
Email: sales@highlite.com

www.highlite.com

