

by Nugent, jailed many months for IRA activities, to her mother. Payne wrote to Nugent's mother, explaining about her book. She later received an envelope with apparently nothing in it, but "two teeny little balls fell out as I shook the envelope. When I unrolled them, I saw that she had sent me the letters themselves."

Between Ourselves was a bestseller, translated into Japanese, Braille and German. Payne decided to rest a while from writing, becoming involved again in the British peace movement. In 1982 she had married David Hawkins, a British writer. It was also this period which saw the beginning of her film career. A friend of hers, who was filming "The Grass is Singing," a feature based on Doris Lessing's novel, invited her to join the crew.

She went on location in Zambia as "the lowest of the low"; but, as Payne explained, a "series of disasters" left her as the first assistant director. "In America they call that a short learning curve," she said. "I came back to England with about 10 years' film experience that I got in three months."

As an assistant director, Payne coordinated the departments of the film unit, set up the day's shooting schedule and coordinated other aspects of the filming. Certainly no staid office job; she must have liked it a lot, right? Wrong! "It was hideous," she said, shuddering. "Working in Africa is difficult. We worked 16 hours a day six days a week. On the seventh day we rested and worked only 10 hours."

"Some things I love about filmmaking," she said, relenting. "I love the teamwork compared to the isolation of writing. It's also good because you make a certain amount of money in a short span of time—enough to take some time off and support yourself when you're writing."

Other films followed, including dramatic and documentary features for British television. She came back to the U.S. in 1986 for a visit and, once more, a short visit



has turned into something more. Payne partly attributes this move to her near-fatal brush with toxic shock syndrome later in 1986. Recovery was slow and interrupted the work she had recently begun on another film project, "The Turning of the Tide."

After Payne was well, work resumed on the film, now in the final stages of production. "Turning of the Tide," which Payne produced and co-directed, "is not about holocaust, fear and threat," she said, but about "how people are positively facing the moral, emotional and political dilemmas of living in the nuclear age."

The film is framed by interviews with nuclear weapons experts who have committed themselves to working toward an alternative defense solution. A retired U.S. Navy Admiral, a U.S. national laboratory weapons designer, and a retired Soviet army general are among those who describe the turning points in their thinking about nuclear issues and the subsequent changes in their lives.

"Turning of the Tide" has been sold to English and French

television; Payne is confident it will come to American TV as well. But no more film work, she swears vehemently. "It's always a misery. I've said after every film I ever worked on, 'never again'—and this time, I mean it."

Meanwhile, she is still hard at work in organizations devoted to halting the spread of nuclear weapons. She considers neither writing nor filmmaking to be her life's work, she says. So what are her plans for the future? "I don't know," said Payne. "I'll try something new again—I've got some ideas." All she will commit to the record is this tantalizing idea: "I'd like to work in a place like Pitzer, in a small community devoted to articulating values I believe in—but, who knows!"

She laughs at the notion she might be a pioneer of sorts, or a role model for others. "It's just," she says, "I'm constitutionally unsuited to having a real job!"

— Elisabeth Duran

Alumni Update

Alumni Council Welcomes New Members

Three new members-at-large were elected last spring to the Alumni Council: Adi Liberman '79, Katherine Peters '74 and Henrie Watkins '88.

"We're really excited about our new members and eager to get started with plans for next year," said Director of Alumni Programs Suzanne Zetterberg '68. "We have a busy calendar, and we're pretty ambitious about what we want to do next year," she promised.

Adi Liberman joins the council after returning to California a year ago; since graduation, Liberman has lived and worked in Washington State, New York and Washington, D.C.

"I have three reasons for becoming involved," he said. "First, I have a really strong attachment to Pitzer—it was one of those pivotal experiences in [my] life. Second, I feel incredibly grateful to Pitzer for the scholarship help I received while I was there—I'd like to 'pay back' in some way.

"And finally, I feel there are some things missing for students, and I'd like to play a role in helping some of those things happen. In particular, I'd like to help alumni get involved in serving as resources to students looking for career guidance."

Liberman spent the last year working on the mayoral campaign of Los Angeles City Council Member Zev Yaroslavsky and other city elections before his recent appointment as chief of staff for State Assemblyman Tom Hayden at his Santa Monica district office.

Katherine Peters '74 says her membership on the council is the first formal connection to Pitzer since graduation. "Part of my reason to be involved was to find out more about Pitzer—today and in general," Peters said. "As a student, you don't really know. I was involved in my own growth and missed a lot of what's there. Through the years, I've begun to appreciate more and more what I

learned there, and the friends I made."

Peters said she got a real eye opener when she recently attended her class reunion. "I just wonder how I missed some of it while I was there," she said.

Peters is a professional singer specializing in 20th-century classical music; she is a private music teacher as well as music instructor at Fullerton College and Cal State Fullerton.

Henrie Watkins '88 didn't have far to go in joining the Alumni Council: since graduation, Watkins has served as director of the College's new Early Outreach Program aimed at increasing minority enrollment in higher education.

"I would like to see alumni more involved in things happening at Pitzer every day," said Watkins. "We're Pitzer's past, even though we are concerned about Pitzer's future. It's important for alumni to stay involved."

Watkins will soon enter the UCLA School of Architecture and Urban Planning's program in public policy to earn a master's degree. "It will be a big change for me," he predicts. "I'm so used to small schools!"

The Alumni Council hammered out next year's goals at a retreat last March in Palm Springs.

"Through programs, networking on and off campus and reunions," said Zetterberg, "the Alumni Council plans to maintain contact, support fund-raising, contribute to the lives of alums, create alumni resources for the College, educate Pitzer graduates on what it is to be an alum, and enhance and promote the College's image."

Current Council membership is made up of Sandra Segal '78, president; Camille Lombardo '70, vice president; Isabel Halty-Cathcart, vice president; Chuck Diaz '75, treasurer; Anita Ortega-Oei '75, secretary; and members-at-large Adi Liberman '79, Katherine Peters '74, Henrie Watkins '88, Elena Maitret '83, Martha Quintana '83 and Sheri Rapaport '78. Naomi Weiss '90 will be the representative from the senior class, while representatives will be selected soon from the remaining three classes.

Next year represents a change in organization as well. Instead of breaking down into committees, the Alumni Council will operate as a committee of the whole. Each member will volunteer to work on numerous projects, said Zetterberg.

15th National Issues Forum Draws Pitzer Friends

Alumni, trustees and friends gathered at the Beverly Wilshire hotel in Los Angeles last June for the College's 15th Annual National Issues Forum. This year's speaker was *Los Angeles Times* Pulitzer Prize-winning editorial cartoonist Paul Conrad.

Conrad spoke on "Satire Through the Eyes of an Editorial Cartoonist," his trenchant political commentary adding another dimension to an audio-visual presentation of his topical and controversial cartoons.

Initiated by Eli Broad, chairman of the board and chief executive officer at Kaufman and Broad, Inc., and life member of the Pitzer College Board of Trustees, the forum is designed to open discussion on major problems of broad concern. Speakers are chosen for their particular role in articulating important national questions, offering a range of perspectives on these issues, and proposing solutions, according to Carl Bandelin, vice president of Development and Alumni Relations.

The most recent speakers at the National Issues Forum include Tipper Gore, Harry Reasoner, Ted Turner, Henry Kissinger, and a debate between Charles T. Manatt and Frank J. Fahrenhopf, Jr., then heads of the Democratic and Republican National Committees.

The evening raised \$68,150 for Pitzer's scholarship fund.

On the Politics of Life

"No country has the legal system to deal with the court cases reproductive technologies have generated," Sharon Snowiss, professor of political studies, told a gathering of alumni last spring. She was referring to a court case pending over a divorcing couple's

Los Angeles Times editorial cartoonist Paul Conrad, speaker at the 15th Annual National Issues Forum.

Adi Liberman '79, Katherine Peters '74 and Henrie Watkins '88, new members on the Alumni Council.



Former Pitzer Professor of English Esther Wagner, left, guest of honor at one of last year's Atherton Dinners, renews acquaintances with Carol Flint Yeager '69, Nancy Sanders Waite '69 and Nancy Rose Bushnell '69. The Atherton Speaker Series, honoring founding President John W. Atherton, was initiated to foster faculty-student exchange.

custody fight over their frozen embryos.

Snowiss's talk, "The Politics of Life: Reproductive Technologies," focused on recent scientific advances forcing new definitions of life, death and reproduction. Snowiss's research includes work in futurology, the social and philosophical impact of technology, and genetic engineering.

"Are we the last generation to die?" Snowiss asked. "Computer robotic technology and genetic engineering attempt to defy life, to alter its very character, with the object being immortality. This is the impulse that brings us here—concern to control nature. The goal is health, and old age is a disease. We see the technology that can keep us alive, but is that life?"

"The question becomes, once we can create life in new ways, such as cloning, then what? There is a danger in our eagerness to perfect race, in seeking what is essentially the control over future generations."

The discussion and debate following Snowiss's presentation ranged from the Baby M case to scientific theories of chaos, quantum mechanics, religion, politics, Pitzer academic requirements, slavery and the National Hockey League playoffs.

The lecture and reception were held at the home of Alumni Council member Anita Ortega-Oei '75 in Alhambra.

New York, New York

Braving one of the last New York City winter rain storms of the season, alumni and parents of current students turned out for a classy evening hosted by Pitzer parents Magee and David Shields (Elizabeth '91) at The Racquet and Tennis Club on Park Avenue.

More than 40 Pitzer graduates from New York, New Jersey and Connecticut arrived after work to unwind and hear guest of honor President Frank L. Ellsworth give an update on the College. Also in attendance from Claremont were Vice President of Development and Alumni Relations Carl

Bandelin and Director of Alumni Programs Suzanne Zetterberg '68.

Alumni Fund: Up, Up and Away!

This year marks the end of another successful year for the Alumni Annual Fund committee, thanks to class representatives and our student and alumni phonathoners.

Isabel Halty-Cathcart '83 and Sheri Huttner Rapaport '78, the Committee's cochairs, are happy to report that \$149,553 was raised from 929 alumni donors. This total was a 34 percent increase in dollars raised over the previous fiscal year and a 10 percent increase in donor participation.

It just goes to show that the message is being heard: the alumni of this College not only want to ensure that Pitzer remains the strong, unique institution it was for them; but that future classes will experience an even better Pitzer. With so much enthusiasm and support, even higher goals may be set next year.

Network with Gay and Lesbian Alums

The Gay and Lesbian Alumni of the Claremont Colleges invite Claremont alumni to participate in their activities.

The network was founded three years ago at Pomona College when a group of Pomona alumni, students and faculty convened, on an informal basis, to network and socialize, says Carmichael A. Smith-Low, a 1984 graduate of Pomona and member of the group's board.

"Since that time," says Smith-Low, "we have grown from a small and informal one-college group to a semi-formal six-college cosexual organization which meets on a regular basis, but with our original purpose still in mind."

For more information, contact Joan Potter, Pomona '59 (213-223-9396); Smith-Low, Pomona '84 (213-874-1139); or Gavin Feliciano, Pomona '84 (714-625-0267).

Professor of Art Carl Hertel and Joanna Jarvis Brick '69 holding a mask—carved by Ari Bawa '87—bearing a suspicious likeness to Hertel.

Katherine Peters '74, left; Patricia Cancellier '74, center; Marian Grant Silverman '74, right; Anne Harnagel '74, seated, left; and Ken Hirsch '75, seated, right, held a mini-reunion during lunch on the Mounds.

Reunion '89: At Last, We Meet Again!

Some 120 Pitzer alums from all corners of the country attended a successful alumni weekend May 19-21, held jointly with Scripps and Claremont McKenna Colleges.

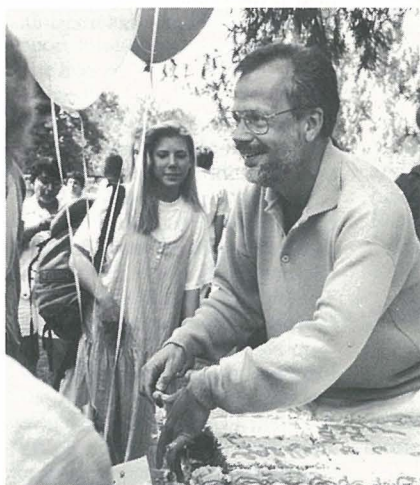
The reunion for the classes of '69, '74, '79 and '84 started off Friday evening with a reception at the home of Pitzer President Frank L. Ellsworth. Then it was off to a tri-college buffet supper on the Scripps lawn.

On Saturday morning, Pitzer Professor of Sociology Ann Stromberg discussed women and children's well-being as issues for the 1990s. Then Ellsworth and Pitzer Vice President for Admissions and College Relations Paul Ranslow updated alums on the state of the College.

The historic Grove House was the site of a pre-lunch reception for alumni and faculty. Then graduates tucked in napkins and donned sunglasses at the make-your-own tostada and burrito bar set up for lunch on the Mounds. Seen juggling a monstrous burrito was Joint Science Center Associate Professor of Physics John Mallinckrodt, who later in the afternoon gave a lecture on the psychology of sound.

After popcorn, libations and outdoor jazz on the Mounds with the Hot Pecans, class reunion parties were held in the evening. Alums kicked up their heels after dinner at a joint college "Music from the Decades—The Thirties to the Eighties" dance at Claremont McKenna College. Sunday brought the close of Reunion '89 with brunch at Scripps, featuring entertainment by a *mariachi* band.

Last April, President Frank L. Ellsworth served up the cake celebrating the College's 25th Anniversary at Kohoutek, Pitzer's annual arts and music festival. Alumni and their families joined students at a community picnic.



Attention, classes of '70, '75, '80 and '85: Plans have already started for next year's reunion! Mark your calendar for May 18-20, 1990, and jot down this number—714-621-8130—to find out how you can help your Reunion Committee! Remember any

The Scoop

Come Back to Pitzer— You May Be Surprised

Can you go home again? Alums at the 1989 Reunion Weekend tell it like it is: below are comments, suggestions and praise given by graduates from the classes of 1969, 1974, 1979 and 1984. But hey, why don't you come back and see for yourself?

- ▶ **“Loved talking to (Professors) Lucian Marquis and Werner Warmbrunn—I'm ready to take another class!”**
- ▶ **“President Ellsworth has worked vary hard getting Pitzer in the ‘black’ with a healthy endowment. I share his concerns over the lack of alumni contributions—we all benefited and should ‘give back’ what we can.”**
- ▶ **“The meals at Pitzer are still the best at the colleges.”**
- ▶ **“Good food, good company.”**
- ▶ **“Same old Pitzer dorms... nostalgic, in a tacky way.”**
- ▶ **“I did not stay in campus housing, but after walking through the dorms, I wish that I had.”**
- ▶ **“The party should never have ended at midnight...should have gone until two at least!”**
- ▶ **“Many people with whom I spoke were there out of curiosity and found themselves unexpectedly moved by the events of the weekend. Either they were reminded of a past which has been somewhat forgotten, or we found once again the reason for being there.”**
- ▶ **“GO!”**
- ▶ **“Despite some hesitations, I had an incredibly wonderful time at the reunion. Once I arrived on campus, all the doubts about meeting long-lost friends faded and everything felt very comfortable and right.”**
- ▶ **“It would have been even better if more alums had come. I wish I had telephoned people and urged them to attend.”**
- ▶ **“I confess that the highlight of my weekend was seeing my old CMC boyfriend with a dumpy, disgusting wife!”**

CLASS OF 1968

KIT MCKERCHER GARDES (Portland, Oregon) has recently accepted a position with a securities marketing firm in Portland. The company markets annuities and mutual funds to banks. Kit looks forward to the move, she says. She's been with Paine Webber for some time.

CLASS OF 1969

ANA MARIA BENITEZ (Buenos Aires, Argentina) has spent many years in Buenos Aires and struggles to maintain her English, she says. Benitez is married and has two sons.

CLASS OF 1970

Announcement! Mark the date now—your class reunion is May 18-20, 1990. Additional information will be mailed to your home soon.

CLASS OF 1971

HATTIE SNELL (Mundelein, Illinois) accepted a position last May in clinical research in the hospital products division of Abbott Laboratories located in North Chicago. Sounds pretty interesting!

S. PADDY O'BRIAN MORRIS (Carmel Valley, California) is working as an internal review officer for the Naval Post-graduate School. She tells us, “My years as a VISTA coordinator in Cleveland and as budget analyst for the ACTION Agency in Washington prepared me well for life at NPS.”

KRISTIN L. OLSEN (North Suburban, Illinois) has relocated from San Francisco Bay Area life to the plains of western Illinois. “My first book is to be published by Pocket Books this fall, *Encyclopedia of Alternative Health Care*,” she says, all about holistic health techniques like various bodywork, past-life therapies and energetic-based medicines like polarity, homeopathy, acupuncture, etc. Look for me on the Phil Donohue Show!”

CLASS OF 1974

JOHN WARFEL (Santa Monica, California) was married in May to Deborah Hartman. They recently bought a house. John continues his work in real estate investment focusing on the

apartment buildings in the Los Angeles area.

Congratulations to KEN LEVY (Encino, California) who married Mona Field last July.

CLASS OF 1975

Announcement! Mark your calendar now—your class reunion is May 18-20, 1990. Additional information will be mailed to your home soon.

JANEL SMITH (Sacramento, California) married David Marchi in February 1988 at the Sugar Bowl ski resort in Soda Springs, California. In July of that year, Janel became director of advertising for Sacramento Savings & Loan. The couple took a three-week honeymoon this May in Europe. Congratulations to you both!

ELLEN A. JOHNSON (Monroe, Louisiana) received her master's degree in psychology at Northeast Louisiana University's spring commencement exercises last May.

CLASS OF 1976

KAREN A. THOMAS (Brooklyn, New York) has opened her own practice, Community Chiropractic, in Park Slope, Brooklyn.

HOUSTON P. LOWRY (Avon, Connecticut) is a newly elected member of the American Law Institute. This busy fellow is also continuing as chairman of the Connecticut Bar Association's section of international law and world peace, and vice chairman of the Connecticut Bar Association's section of computer law.

MARY CATHERINE SOPHOS (Washington, D.C.) was recently appointed deputy assistant secretary for legislative affairs by Secretary of Treasury Nicholas F. Brady. Before joining the Department of the Treasury, Mary was the director of government relations with McCamish, Martin, Brown & Loeffler, a Texas-based law firm.

CLASS OF 1978

RITA D. JEPSEN (East Granby, Connecticut) married Arthur House in May 1988. They live near Hartford, Connecticut. In May 1989, Rita received an M.D.

from the University of Connecticut Medical School. Rita's goal is physical medicine and rehabilitation. She says she'd like to say "Thanks!" to Professors Dave Sadava, Dan Guthrie and George Andrus; the Scripps Dance Department; and "a special thank you" to Pitzer Professor of Political Studies Sharon Snowiss.

SANDRA SEGAL SIGMAN (Los Angeles, California) was married to Joel Sigman July 30 in Los Angeles. Sandra is director of property management for the Los Angeles Land Company. She is also serving her second year as president of the Pitzer College Alumni Association.

ANNE E. LESSICKXIAO (Madison, Wisconsin), Ph.D. candidate in African languages and literature at the University of Wisconsin, has been awarded a Fulbright grant to conduct research and take courses in the People's Republic of the Congo. After two years in the Peace Corps in Zaire, she continued her education at Ohio University, receiving a master's degree in linguistics in 1983.

CLASS OF 1980

Announcement! Mark the date now—your class reunion is May 18-20, 1990. Additional information will be mailed to your home soon.

CELINA DE AGUIAR (Kailua-Kona, Hawaii) reports, "Life is very busy for me right now, though I love everything I'm doing. I've gone back to school and am now student teaching the fifth grade. I love Hawaii, which has been home for six years." Celina was married last July.

CLASS OF 1981

TOM WORMSER (New York, New York) received a master's degree in science and real estate development from Columbia's School of Architecture last June.

CLASS OF 1982

KAREN ELAINE CROCKER (Los Angeles, California) received an M.D. from the University of Iowa last May. Last July she began a residency in psychiatry at the

University of Southern California Medical Center in Los Angeles.

DAVID SHAPINSKY (Chicago, Illinois) was recently awarded a fellowship from the University of Chicago to complete his doctoral thesis in history.

CLASS OF 1984

STEVE LESKIN (Portland, Oregon) will be attending Lewis and Clark Law School in Portland this fall.

JOHN HOEL (Columbia, Missouri) has been elected editor-in-chief of his law review at the University of Missouri.

TODD MAIBACH (Pasadena, California) recently married Carol Allison Ruby. Todd is a history and organizational behavior graduate, while Carol has degrees in Spanish and journalism from Cal State Chico. Both are publishers' representatives. They honeymooned on a cruise on the Queen Elizabeth II to Europe followed by a bicycling trip through the Loire Valley in France. Congratulations!

CLASS OF 1985

Announcement! Mark your calendar now—your class reunion is May 18-20, 1990. Additional information will be mailed to your home soon.

EDWARD HOLMES (Sunnyvale, California) reports that he was married June 17 to Linette, who is an architect/space planner.

CLASS OF 1986

NEIL NORTON (San Francisco, California) will be attending the A.B. Freeman School of Business at Tulane University in the fall. Neil has recently returned from vacation in Germany.

MICHELE RASMUSSEN (San Francisco, California) has just finished her first year of pharmacy school. She'd love to hear from any Pitzies. Michele can be reached at 161 Johnstone Drive, San Francisco, CA 94131.

CLASS OF 1987

JILL HAWTHORNE (Upland, California) is currently working on her master's degree in higher education administration at the University of Massachusetts at

Amherst. In July Jill, who was working in Claremont for the summer, hosted a barbecue for some recent Pitzer grads.

CHARLOTTE WHITELEY '87 was in attendance, along with her fiancée, JAMES MILAN '82. Charlotte is currently working in a women's clinic in Los Angeles assisting in birth control education. James will be travelling to Europe (Cologne, West Germany) to participate in an Ultimate Frisbee tournament (let's hear it for former Braineaters!). Also visiting at the BBQ was LIBBY ROSSMOORE '88, who was on a layover on her way back to Australia, where she has been living the "good life." SANDY CORBETT '87 was also at the barbecue. Sandy is currently working at Pitzer in the Public Affairs Office. In her spare time she has been working on the Pitzer History Project. As if that weren't enough, Sandy is also in the process of completing her master's degree in history at the California State University at Long Beach. She'll be conducting her thesis research on the history of Pitzer College.

BIRTHS

PETER WORMSER '75 and LIZ MILWE '76 (New York, New York) are proud to announce the latest addition to their family; Timothy Milwe Wormser, born April 7, 1989. He weighed 6 pounds, 10 ounces.

TOM WORMSER '81 (New York, New York) and wife Cindy Goodman are parents of a daughter, Megan Leigh Wormser, born February 20, 1989. Tom received a master's degree in science and real estate development from Columbia's School of Architecture in June.

HEIDI HAWKINS SMITH '66 (Carson City, Nevada) recently gave birth to her sixth child. Husband Stephen Smith (CMC '66) comments, "Pitzer women are very fertile!!"

NOAH RIFKIN '80 (Washington, D.C.) and wife Roberta are proud to announce the arrival of Shanna Hilary Rifkin on April 21, 1989. Shanna weighed 6 pounds, 6 ounces and was 19 inches long.



Honor Roll



Dear Friends:

At this time of year it is always my happy task to write a letter of thanks to those of you who have provided the College with gifts during the past year. Clearly, without your continuing support Pitzer would not be taking its place in the front rank of colleges of arts and sciences.

All of us associated with Pitzer College are justifiably proud that in just 26 years it has developed into one of the nation's foremost liberal arts colleges. Because the word has spread that Pitzer is an exciting place to be, we are now receiving nearly 1,200 applications for 165 freshman places and, more and more, these applicants are making a choice between Pitzer and prestigious institutions like Oberlin, Pomona, and Vassar Colleges. For such a young institution, our fiscal record also is impressive. Our endowment is growing and, unlike many small colleges, Pitzer has operated without a deficit for 13 years. None of this would be possible without the expanding partnerships between donors, faculty, and students.

Support of the Annual Fund is absolutely critical to our continued fiscal health. What do gifts to the Annual Fund do? Very simply, they can represent the margin of difference between a balanced budget and one that is not. These unrestricted gifts supplement tuition dollars by fueling the operating budget so that we can continue to:

- expand our unique interdisciplinary curriculum;
- recruit and retain a faculty of dedicated scholar/teachers;
- provide an intellectual environment in which students

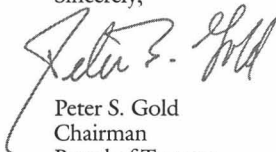
and faculty work together in close partnership;

- maintain our facilities;
- provide our students with opportunities to broaden their perspective through study in another culture;
- and offer a viable scholarship program that will energize our student body through increased diversity.

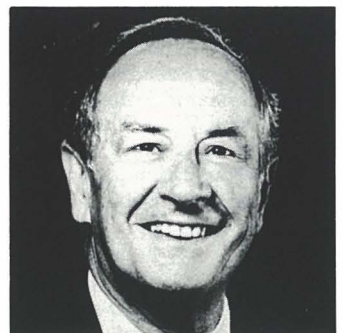
In addition to the Annual Fund, during the past year Pitzer has been fortunate also to receive a number of major gifts for special projects that are in the planning stage. These projects include: expanded recreation facilities for our students, a Center for Intercultural Study and the Arts, and a new state-of-the-art building for the science program shared by Pitzer, Claremont McKenna, and Scripps Colleges. Other projects are under consideration which haven't reached the planning stage as yet. The significant thing is that all of these enhancements to programs and facilities come to pass through the generosity of those who appear on these pages, and those who will be in future Honor Rolls.

Every gift does make a difference. As we look ahead to next year we invite you to continue to make a difference at Pitzer College. The support of friends who share our vision gave the College its hopeful beginning and its solid present. Please join us in ensuring a future that holds great promise.

Sincerely,



Peter S. Gold
Chairman
Board of Trustees



We are pleased to take this opportunity to recognize those donors who supported the College during the past fiscal year, July 1, 1988 through June 30, 1989. This support was received in the form of Annual Fund Gifts and Special Gifts. Annual Fund Gifts are

unrestricted and help support the ongoing activities of the College. By helping to sustain the excellence of Pitzer's educational programs, these gifts play a significant role in maintaining the vitality of the College. Special Gifts strengthen the College by

underwriting specific projects or adding to endowment. They may enhance educational programs, or make possible new construction, renovation or maintenance of existing facilities. Such gifts represent important investments in the future of the College.

Russell K. Pitzer Founders Society

If "foundation" is defined as "the basis upon which something stands," the members of the Russell K. Pitzer Founders Society have truly provided the College with a foundation by making gifts that total \$100,000 or more. We are deeply grateful for the role the following individuals and organizations have played in allowing the College to continue to fulfill its mission of excellence in education.

The Ahmanson Foundation
R. Stanton Avery
Florence Mead Benjamin
Eli Broad
Canfield Foundation
Edna Castera
The Durfee Foundation
Mr. & Mrs. Peter S. Gold

The John Randolph Haynes and
Dora Haynes Foundation
Roger C. Holden
The James Irvine Foundation
The Fletcher Jones Foundation
Felix and Helen Juda Foundation
Mr. & Mrs. Felix Juda
Donald B. Kaufman
W. M. Keck Foundation
Enid & Crosby Kemper Foundation
MCA Foundation
MCA Inc.
Raymond and Gertrude Marshall
Charitable Trust
Raymond G. Marshall
George H. Mayr Foundation
John A. McCarthy Foundation
Odell S. McConnell
Mrs. Giles W. Mead
Giles W. Mead, Jr.
Giles W. and Elise G. Mead
Foundation

Harold S. Melcher
The Ralph M. Parsons Foundation
Ina Scott Pitzer
Kenneth S. & Jean M. Pitzer
Russell K. Pitzer
Pitzer Foundation Trust
R & R Foundation
Mabel Wilson Richards Scholarship
Fund
Richard J. Riordan
Harry W. and Virginia Robinson
Trust
Frederick Salathe, Jr.
Sidney J. Sheinberg
The Harry and Grace Steele
Foundation
Stuart Foundations
I. N. and Susanna H. Van Nuys
Foundation
George H. Whitney

Provida Futuri Society

With cumulative giving of \$50,000 or more, the members of the Provida Futuri Society have demonstrated an exceptional commitment to the College. We are very grateful to the following individuals and organizations for their singular support.

S & A Agate Foundation
Mrs. Rosamond Arthur
The Arthur Vining Davis
Foundations
ARCO Foundation
Constance A. Austin

Compton Foundation
Joseph Drown Foundation
Max C. Fleischman Foundation
Robert Ford Charitable Foundation
Mrs. Clark R. Gamble
Jill Ford Harmon '66
William Randolph Hearst
Foundation
Mr. & Mrs. Harvard K. Hecker
Mr. & Mrs. Charles C. Horton
Dr. & Mrs. William C. Janss, Jr.
Janss Foundation
Janss Corporation & Citycenter
Corporation
Bruce E. Karatz
Kaufman and Broad Home
Corporation

Mattel, Inc.
Irwin Sweeney Miller Foundation
Elinor & Frank Nathan
John Pollock
Agnes Campbell Richmond
Nicholas Rosenbaum
Security Pacific Foundation
John Stauffer Charitable Trust
Ann Compton Stephens
Union Pacific Foundation
Mrs. Will Ward
Mr. & Mrs. Leslie A. Warren
Thomas J. Watson
The Thomas J. Watson Foundation

Annual Fund Gifts

Robert J. Bernard Associates

Robert J. Bernard Associates have provided the College with gifts of \$10,000 or more.

Mr. & Mrs. Hirschel Abelson
The Ahmanson Foundation
Mrs. Rosamond Arthur
Laurie Melcher Benjamin '76
Penelope Kaye Bloch '74
Joseph Drown Foundation

Jill Ford Harmon '66
The John Randolph and Dora
Haynes Foundation
Dr. & Mrs. William C. Janss, Jr.
Janss Corporation & Citycenter
Corporation
Janss Foundation
Kaufman and Broad Home
Corporation
Mrs. Karen Chase Larson

George H. Mayr Foundation
Harold S. Melcher
Mr. David W. Mills
Peat Marwick Main & Company
George & Edith L. Piness
Harry W. and Virginia Robinson
Trust
Mr. James E. Weir
Mr. Robert K. Wolfe

Chairman's Associates

Chairman's Associates have provided the College with gifts of \$5,000 to \$9,999.

Anonymous
Mr. Lionel Achuck, Sr.
S & A Agate Foundation

Mr. & Mrs. Michael Arlen
Constance A. Austin
Mr. & Mrs. Anthony Barash
Barash & Hill
Compton Foundation
Dr. & Mrs. Laynard L. Holloman
Melinda Gold Johnston '74
Ivan & Deborah Bach Kallick '78

Cissy Patterson Trust
Mabel Wilson Richards Scholarship
Fund
James and Edith Ross Foundation
Helen M. Smith
Rebecca Sokol Smith, M.D. '70
Ann Compton Stephens

President's Council

President's Council members have provided the College with gifts of \$1,000 to \$4,999.

Anonymous
William M. Ashley '79
Carl F. Bandelin
Kathleen L. Bernath
Ann Lawson Bilodeau '69
Mrs. Louis Blond
Kathleen S. Blunt '72
Bernie & Deborah Brillstein
David R. & Nancy Rose
Bushnell '69
Mr. & Mrs. George P. Caulkins, Jr.
Nancy Penick Corcoran '72
M. Quinn Delaney '76
William & Janet Dickey
Mr. & Mrs. Nicholas R. Doman
Elisabeth T. Ely '72
Mr. & Mrs. Bertram Firestone
Gregory Firestone '90
Robert & Bonnie Fisher
Jane Fraser Fulcher

Mary Beth Neal Garber '68
Mr. & Mrs. Peter S. Gold
Frank Russell Gray '78
Mr. & Mrs. E. Franklin Hirsch
Mr. & Mrs. Charles C. Horton
Maria D. Hummer
Mickey Jannol '78 and Ellen
Chaplan Jannol '79
W. T. & Molly Mason Jones
Mr. & Mrs. Felix Juda
Mr. & Mrs. Bruce Karatz
Joan M. Karlin '72
Mr. & Mrs. Donald B. Kaufman
Mr. & Mrs. George E. Keeler
Mr. & Mrs. Robert S. Killebrew, Jr.
Mrs. Karen Chase Larson
Mrs. Margot Levin
Steven Wade Lindseth '80
Maureen Lynch '77
Cheryl A. Marino '78
Nancy C. Martin '70
John W. McNear
Mr. & Mrs. Morton Meyerson
Dr. & Mrs. Charles E. Mize

Elinor & Frank Nathan
Mr. Murray Pepper
Mr. & Mrs. Russell M. Pitzer
Marc & Sheri Huttner
Rapaport '78
Mr. & Mrs. Maurice R. Raviol
Mr. & Mrs. Don H. Reuben
John R. Rodman
Bruce L. Ross '72 and Randy
Moskowitz Ross '76
A. Bruce & Lois Rozet
Mark Scher '75 and Sharon
Monsky Scher '75
Mr. & Mrs. Richard A.
Schermerhorn
S. Bernard Schwartz
Mr. & Mrs. Nicholas Shammass
Mr. & Mrs. David V. Shields
David B. Silberman, Jr.
Dr. & Mrs. Chadwick Smith
Deborah Deutsch Smith, Ed.D. '68
Vivian & Joseph Steinberg
Maggie Habecker Vizio '68
Nancy Sanders Waite '69

Benefactors

Benefactors have provided the College with gifts of \$500 to \$999.

Anonymous
Mark & Linda Spiegel Allen '73
Rebecca E. Barron '75
Linda Bass '74
Barry Benjamin
Dr. & Mrs. Amasa S. Bishop
Sara L. Burr
Mary Caulkins '92
Mr. & Mrs. Gerald B. Church
Mr. & Mrs. Paul H. Cohen
Ruth Dolphin
Sally & Cecil Drinkward
Stephen M. Edwards

Anita Dann Friedman '77
Martin L. Friedman
Wendy G. Glenn '75
James Gottlieb '83
Robert B. Greenberg '74
Janis Saltzer Gurnick '78
Mrs. Glenn A. Hastings
Mr. & Mrs. Harvard K. Hecker
Mr. Gerald G. Hotchkiss
Karen L. Kahn '75
Kristi L. King '81
Margaret King '81
Mr. & Mrs. Harold F. Kleinman
Camille Lombardo '70
Alice Love '73
Suzanne Bigham McElwee '74

John M. Mullooney '77 and
Pamela Gillis Mullooney '78
Judith Avery Newkirk
John & Sheila Nichols
Anita Ortega-Oei '75
Mr. & Mrs. John C. Parish
Meg Rose Perry '72
Howard T. Pitts, IV '80
Paul Ranslow
Pierre J. Ratte '76
Mr. Robert Gore Rifkind
Terry L. Rosenmeier '76
James & Karen Schaefer
Mr. & Mrs. George R. Sprague
Bobbie Zeifert Wright '68
Stephen & Connie Zetterberg

Sponsors

Sponsors have provided the College with gifts of \$250 to \$499.

Anonymous
 Stacie Stutz Aaron '76
 Mr. & Mrs. Mitchell Aaronson
 Mr. & Mrs. Paul Alter
 Bruce T. Bader '82
 Deborah Anderson Baker '81
 Cathryn Cate Bangs '73
 Ann Hudelson Bartlett '70
 Dorianne Bass Janet Black '72
 Mr. & Mrs. Robert A. Black
 Susan Ann Brock '70
 Don William Ceglar '82
 Debra L. Christian
 Dr. & Mrs. Morris Claman
 Mr. & Mrs. Charles L. Cleek
 Mrs. Damaris J. Copperud
 Carita Crawford '82
 Eric Anthony Douglas '82
 Mr. & Mrs. Frank Feder
 Richard L. Fellows '76
 Mr. & Mrs. Frank Fenton
 Rabbi & Mrs. Harvey J. Fields
 Joel Fields '85

William Gaede '85 and Tacy Hess
 Gaede '86
 Mr. & Mrs. J. Peter Gattermeir
 Donald T. Gillin
 Mr. & Mrs. Bud Glickman
 Roberta S. Goldberg '76
 Stina Hans
 James B. Harnagel '77
 Dr. & Mrs. Irwin Harris
 Elizabeth Gerson Hjalmarson '81
 Bea Matas Hollfelder '87
 Kathleen A. Howell '71
 W. Andrew Huey '80
 Agnes Moreland Jackson
 Thomas & Sarah Kailath
 Mr. & Mrs. Lincoln T. Kaneshige
 Mr. & Mrs. John A. Kazmierowski
 Joseph & Lou Anne Kellman
 Margreta Klassen, Ph.D. '68
 Gayle Breitbart Klusky '69
 Mr. & Mrs. Arthur M. Laub
 Robin Hall Leason '69
 Ernest A. Long
 Edward S. Masket
 Joan Haussler McGuire '72
 Barbara Thompson McLean '69
 Madeline Hart McReynolds '79

Timothy Sanford Miller '82
 Linda Carmona Monroe '68
 Dr. & Mrs. Edward Nersessian
 Mr. & Mrs. James S. Pignatelli
 Mr. & Mrs. Irving Prell
 Douglas Morse Price '80
 Mark Alan Reckard '82
 Michael Rosenzweig '76
 Michael Lewis Rubin '78
 Mr. Theodore Schlissel
 Sandra Segal '78
 Lucille Ellis Simon
 Dr. & Mrs. Arthur D. Steffee
 Bruce Lee Stein '76
 Julie Stern '78
 Leigh H. Taylor
 Ruth Ellen Temkin '73
 Susan Cropsey Thompson '72
 Madeline Pinsky Walker '73
 Alana McGuire Wallace '70
 Miriam K. Warshow
 Jack & Kristine Watkins
 Mr. & Mrs. Lawrence R. White
 Janet Caffardo Yoss '70
 Suzanne Silverman Zetterberg '68
 Howard & Linda Zuker

Patrons

Patrons have provided the College with gifts of \$100 to \$249.

Anonymous
 Nancy Klein Abell '72
 Marilyn Masquelier Adams '70
 Susanne S. Addicott
 Elizabeth Williams Agajanian '69
 Luis A. Aguilar '81
 Diana Munguia Ajuria '75
 Tammy Allen '86
 William Worth Altaffer '81
 David S. Arkin '82
 Mr. & Mrs. Robert K. Ashe
 Elizabeth Shirley Bagby '69
 Bridget Lynn Baker '82
 Mr. & Mrs. Robert M. Ballinger
 Robert W. Barnes '76 and Minda
 Beth Friedman '76
 Jill Minderhout Baskin '77
 Molly Jane Bayless-Wu '82
 Sandra Elaine Berenbaum '74
 Barbara B. Bergmann
 Shelley L. Bernardo '70
 Sherilyn Danley Bloch '69
 Candace Ryan Bonazzola '71
 Diana Ryan Bottlik '81
 Lisa J. Bourgeault '83
 G. Thomas Bowers
 Janice Wahl Bowers '71
 Lauren Arnold Brannen '69
 Edi Schwartz Brannon '68
 Elizabeth McGuire Braun '68
 Thomas Wayne Brock '83
 Lori B. Brooks '78
 Ann Cozzens Brown '69
 Arthur Stillman Brown '80
 Karen Hochman Brown '80
 Janet Clover Burns '68

Patricia Hunter Cancellier '74
 Mr. & Mrs. Maurice Carmona
 Annette L. Casey
 Marilee A. Castenholz '73
 Melissa Beth Cates '80
 Mr. & Mrs. Philip Cavanaugh
 June B. Charles '78
 Susan Marie Chavira '80
 Kenneth Alan Cheitlan '78 and
 Betsey Keeler Cheitlan '78
 Michael K. Christie '75
 Warren Clark, III '83
 Rebecca Cleek '86
 Cathryn G. Cohen '74
 Mr. & Mrs. A. Thomas Conlin
 Anne Koppel Bienn Conway
 Jill Cooper '73
 Ron and Jan Corran
 Mr. & Mrs. Gordon T. Curtis
 Jim & Adele Dalsimer
 Susan Rappleye Darlington '73
 Mr. & Mrs. James C. Davis, Jr.
 Robert J. De Monte
 Lisa DeFaria-White '78
 David & Josephine DeYoung
 Mr. & Mrs. George A. Dean
 Rebecca Stephens DiDomenico '81
 Charles R. Diaz '75
 R. D. Dignan, M.D.
 Alan & Joan Djanogly
 Larry D. Dovenbarger '75
 Beryl Herzberg Druker '69
 Sarah Lothrop Duckett '69
 Lois Hall Dumont '81
 Peter Dunay '85
 Dr. & Mrs. Marvin I. Dunn
 Holly L. Echols '79
 William H. Elson, Jr.
 Iane Michelle Ensten '84

Carolyn Feuille-Le Chevallier '69
 Michael Filigenzi '80
 Dr. & Mrs. Hugh Firemark
 Dr. & Mrs. Delbert Fitchett
 Brian Folb '76
 Karen Cummins Freeburg '68
 Mr. & Mrs. Abraham Friedman
 Mr. Allan Gabriel
 Sarah E. Gamble '84
 Theodore Gaulin '88
 Mark Steven Gaynor '80
 Mrs. George Glass
 Mr. & Mrs. Stephen L. Glass
 Linda Katherine Glimn '74
 Cellin Phillip Gluck '80
 Lori Plante Goldfarb '82
 Samuel & Miriam Goldfarb
 Steven R. Goldsmith '76
 Jenniphir Goodman '84
 Mr. & Mrs. Marvin Goodson
 Jeffrey P. Gottlieb '75
 David S. Greensfelder '87
 Kirsten A. Gronbjerg '68
 Daniel A. Guthrie
 Kathryn Rupp Haas '71
 Claire E. Hackett '86
 Susan Hale '81
 Elsie Hamilton '82
 Denise Margolin Hankins '77
 Susan Glikbarg Hanson '73
 Anne Louise Harnagel '74
 Barbara E. Hartz '80
 Starr H. Harwin '78
 Irene Halouchko Harwood,
 Ph.D. '69
 Bruce G. Hecker '76
 Bonnie Heikes '75
 Suzanne Beal Henkel '68
 Karen Waldron Hiatt '70

Patrons (continued)

- Johnna Davilla Hickox '67
Nancy Nelson Hill '69
Sally Wise Hilliard '70
Jan Leslie Hitchcock '77
Mr. & Mrs. Louis Hochman
Mr. & Mrs. Floyd G. Hoffman
Mary S. Holder '73
Mary Hammond Houser '78
Sandra Marshall Howard '75
Mary C. Huntington '76
Leslie Dashew Isaacs '70
Valerie Krieger Jahan, M.D. '82
Mr. & Mrs. Samuel L. Jenkins
Ms. Gwendolyn R. Johnson
Patricia Johnston
Hugh & Diane Jones
Katherine Marie Jones '73
Nan Warhurst Jones '72
Ann Clary Judy '68
Elene Kallimanis '71
Joyce N. Kaneda '74
Mr. Wallace Kantrowitz
MaryAnn MacNulty Karlsgodt '70
Gary R. Kates '74 and Lynn
Diamond '75
Sadhna Kaur Khalsa '82
Lawrence & Anna Gay Kim
Mr. & Mrs. Steven Kipper
Chandre Kipps '85
Kiyokazu Kitamura '73
Susan Knight '75
Patricia Sharkus Kokowicz '73
Robert S. Koster '74 and Katherine
Oakleaf Bell '74
Melinda L. Koziol '81
Kathleen Stahl Krucker '68
Sally Kurtzman
Mary Kushner '71
J. Scott Ladd '81
Susan E. Lancaster '75
Douglas Ann Land '69
Linda Tremelling Landau '68
Susan Norwick Laufer '68
Anne & Alex Lauterbach
Ellen Debra Lauterbach '82
Maya Tsuji Lawrence '70
William & Patricia Lear
Ellen Williams Lebel '72
Mrs. Henry Lesse
Anne Oberlin Le Sure '72
Robyn Olsen Letters '68
Mr. & Mrs. Harold A. Levin
Patricia Stix Levy '78
Barbara Davidson Lewington '72
Roša Liu-Lundborg '85
Wayne & Sherry Longfield
Barry Ludlow '80
Herbert Luxenberg
Carolyn Sue Maberry '87
Dr. & Mrs. Howard Maibach
Ellie & Dick Mansfield
Bruce Markell '77
Michelle S. Marks, Ph.D. '78
Charles W. Martin, Jr.
Hector Martinez '88
Emilie Bassett Mason '71
Carol Lynn Matsunaga '74
Laurie Greenwood Maynard '75
Linda Aborn McCarty '75
Lesley Oliver McClelland '71
Katherine Ellis McEnroe '79
Jeffrey C. McQueen '73
Sarah Michael '68
Mr. & Mrs. Arnold Miller, Jr.
Thomas Jefferson Miller '83
Mr. & Mrs. John H. Miller
Jeannie Mintz '80
Michael R. Mitchell '76
Mr. & Mrs. Mike Mitrovich
Mr. John C. Moffitt
Thomas Henry Moore '82
S. Paddy O'Brien Morris '71
Elizabeth L. Morrison
Rabbi John Moscowitz '75
Anthony Allen Mosel '82
Thomas James Mullins '88
Marcia Green Nathanson '69
Mr. & Mrs. W. Newell Nelson, Jr.
Gerwin & Karen Neumann
Mr. & Mrs. Harry Newman, Jr.
Minh-Linh Hue Nguyen '70
Yvonne Norte '85
Neil F. Norton '86
Kristin Gottschalk Olsen '71
Robert Olson '73
Gloria Ortiz-O'Brien '85
Ronald Paine '74
Marsha Palitz-Elliott '73
Bernadette Palombo '85
Nan & Bruce Parker
Abigail Wack Parsons '71
Frieda Morgan Patterson '80
Lucretia Drane Peebles, Ph.D. '71
Katherine H. Peters '74
Ruth & Barry Phillips
Michael F. Pierce '77
David S. Pitzer
Susan M. Pitzer
Darlene C. Plaisted '82
Patti Podesta '77
Paul D. Popejoy '82
Susan Pratt '86
Martha Ellen Quintana '83
E. Scott Reckard '78
Linda Reszetylo '79
Mr. & Mrs. Jack P. Richman
Gayle Gubman Riesser '71
Kirt & Ellen Ritter
Mark L. Rivin '74
Anne Roberts '73
Laura Chapelle Robertson '81
Mary Dicke Robinson '73
Wendy Robinson '72
Mary Ann Forde Rockwell '80
Lynn Mirisch Rogo '75
Kurt Rosenberg '78
Mr. Richard M. Rosenberg
Margaret Louise Roth '82
Joseph and Susie Saito
John & Louise Sampson
Sue Sandson
Susan Culver Schlickeisen '68
Mr. & Mrs. Burton H. Schneider
Mr. & Mrs. Robert L. Schoen
Catherine Zeitman Seligman '73
Diane S. Shammass '75
Berkley E. F. Shands '80
Mark D. Shepard '78
Eva-Marie Holzhey Sher '67
Jeanne Ambruster Sherry '79
Alfred J. Shine, Jr. '85
Mr. & Mrs. John Shipley
Susan Nathan Sholl '76
William C. Sias '78
Andrea Sklar Sidorow '82
Mr. & Mrs. John Simpson
Chadwick F. Smith, Jr. '84
Judith & Charles Smith
Deborah M. Smith '74
Dennis C. Smith '84
Mr. & Mrs. Wesley J. Smith
Diane M. Snell '81
Susan Ranslow Solorzano '81
Mary Catherine Sophos '76
Judy Spiegel '78
Stacy M. Sprowl '74
Mary Lederle Stearns '83
Betty J. Steen
Anthony C. Stein, Ph.D. '73
Jason Steinberg '86 and Elizabeth
Baker Steinberg '86
Linda S. Stevenin '78
Emily Annette Stevens '71
Mary Sartorius Stewart '70
Elizabeth Witte Stokes '68
Alene K. Stolz '81
Beth C. Strader
Susan Nemer Stuelke '70
Jessica M. Swift '74
Mr. & Mrs. William W. Taft
Mr. & Mrs. Robert H. Takeuchi
Maralin B. Taylor
Andrea Lee Thompson '73
Carolyn Thon '75
Linda Ann Tirado, Ph.D. '72
Roy Edward Tomkins '83
Yvette Jackson Townsend '71
Judith Jennings Treas '69
Joanne Butera Turner '70
Mr. & Mrs. Cruz A. Uribe
Catherine Van Orman '76
Sara Waldstein '76
M. Robert Warden '81
Mark Philip Warshauer '83
James W. Weber '79
Myra & David Weiss
Janet Butler Westwood '72
Lesly Wilson '72
Valarie Suzet Windle '83
Bradford Wolfe '86
Katharine Leighton Wolfe '83
Lois Blackaller Wolfe '69
Kathryn Bautista Wolters '74
Vicki Diane Wurman '75
Dr. & Mrs. Suyenori Yamada
Lorna Fusako Yamane '82
Adriana Yanez '87
Carol Flint Yeager '69
Patrick Yee '88
Jo Deane Zalay-Gerard '69
Ray & Nora Zanarini

Other Contributors

Contributors have provided the College with gifts up to \$99.

Anonymous

Connie Berkeley Abeloff '69

Debra Cahill Aczel '74

Margaret Tomo Adachi '75

Jone Aguirre '92

Walter Manice Albrecht '79

Christopher W. Alcalde '78

Ellen Judy Alderman '76

Virginia Moritz Allen-Griffin '70

Susan Allport '73

Doris Alm-Hart

Josephine Razo Alvarez '81

Kathy Gail Anderson '68

Katrelya Anne Angus '84

Masami Arai '92

Harriet Archibald-Woodward '74

Ann Warner Arlen

Katherine Ehrenkranz Armstrong '79

James R. Arthur '84

Rachael Ary-De Rozza '81

Helen Asbury '76

Robert M. Ashen & Ann Garry

Terri Cavanaugh Ashley '70

Tremaine Atkinson '87

Lance William Auer '87

Mae Cutler Augarten '83

Kathryn W. Austin '67

Betsy Bamford Ayres '68

Linda Knowles Azad-Stobbe '70

Matthew Baer '86

Dana Gentry Bain '84

Eric Bain '85

Jennifer Lee Bale '87

Lorita Lynn Bank, Ph.D. '75

John Arthur Barnes '83

John Baronian '83

David Barr '77

Steven H. Barr '79

Dolores N. Barrett '76

John & Anne Bedell

Inge Bell

Meri Irwin Ben-Yehuda '78

Henry & Linda Bennett

Janice S. Berg '78

Melinda C. Berning '82

Susan E. Berzon '79

Betsy Bisno '76

Ernesto Carlos Blanco '80

Lana Marie Bobele '82

Elizabeth Keira Bobrow '86

Helen Rose Bonnell '87

Kaaren Boothroyd '86

Erin Riley Borden '84

Susan J. Bosse '73

Jeff Bourne '83

Robert E. Bowdoin

Janet Kavanaugh Bower '76

Carol Crossman Boyce '76

Katherine McKee Boyd '73

Betsy Brown Braun '70

Erin Braun-Duffy '87

Leslie A. Brents '74

Joanna Jarvis Brick '69

Lisa Jane Bridges '80

Joy Sielen Brightup '73

Sharon Brooks '85

Susan Brooks-Warren '78

Sarah Elizabeth Brotherton '80

Cameron Elizabeth Brown '85

Donnaldson K. Brown '82

Lori Alyn Brown '78

Elizabeth Brown-Dean '72

Annabel F. Buckley '84

Laura McClintic Burr '88

Alison Ruth Cain '87

Susan D. Calvin '87

Sally Campbell '73

Lisa Maria Campo '87

Joan Clare Cantrell '84

Howard A. Caplan '80

Victoria Carmona '74

Brian Carroll '86

Marka Carson '85

Stanley W. Casselman '85

Susan E. Celniker '75

Joyce E. Chadwick '84

Laurel Wisner Chamberlain '68

Jeannine Chang '85

Kathleen Rae Chernus '68

Roberta Childers '78

Jeanette Woo Chitjian '83

Richard Chute '84

Junita Ciputra '83

Marilyn Jean Clapp '71

Lindsey Brashear Cleveland '69

Elizabeth "Betsy" Cline '73

Mr. & Mrs. Stuart Cohen

Carol B. Cole '79

Mr. Richard Patrick Coleman

Kevin Collins '85

Portia Jackson Collins '74

Boyd Colt '83

Michele Renee Conliffe '83

David J. Coons

Cornelia Reynolds Cooper '70

Carol L. Corden '68

R. Denise Kelley Corey '78

Leigh B. Cornelison '74

Joyce A. Cory '87

Alan Bruce Cowans '79

Kelli Anne Craft '82

Philip Mark Cravens '76

Wendy L. Crawford

Karen Elaine Crocker '82

Rose M. Cullen

Carol Curinga '73

Marcia Whitley Curran '69

Pamela Gail Curtis '75

Patricia Cutler '85

Gregory Sheldon Dahl '83

Edward V. Damutz

Ann Elizabeth Danelski '83

Mia Darbonne '84

Pamela H. David '74

Anne Shaw Davidson '88

Carol Hecker Davis '73

Catherine Lee Davis '72

Mary Sullivan Deacy '76

Thomas M. Deacy '77

Linda de Baun '68

Deborah Marion Deeble '73

Helen D. Deeley

Alison L. Denning '76

Mr. & Mrs. Charles Devine

Larry Diamond '82

Kathy Dietrich-Loest '74

Darcel Detering Dillard '82

Gabrielle Dolphin '72

Kelly Lingerfeldt Doss '86

Thomas William Douglas '88

Barbara Potter Doutt '69

K. Michelle Vorih Doyle '82

Louis M. Driever '81

Kelly Ann Dryden '85

An McNamara Duclos '76

Julie M. Duffin '81

Richard E. Duggan '78

Pamela Duhl-Zbesko '74

Marilyn Dunn '85

Velancia Mattingly DuPre '73

Roy Durnal, Jr. '86

Reid Lewis Dworkin '80

Nicholas Neal Eaden '77

Marsha Ann East '88

Linnea Sowers Edwards '70

Linda Eisner '85

David Lipton Ellner '88

Dr. & Mrs. E. A. Emmett

Sarah Oakie Eppenbach '68

Penny Sutton Eppley '68

Mistie Erickson '68

Drs. Thomas & Maria Eschen

Mr. & Mrs. Enrique Escudero

Micheline Esposito '85

James N. Esterkin '75

Sheree Lynn Estes '86

Elaine Dawn Evans '87

Ms. Florence A. Falk

Sharon P. Falsey '71

Stuart Farber '85

Lee Farkas

Kenneth Farrow '85

Belinda Valles Faustinos '73

Jeffrey J. Faville '79

Priscilla Fawcett '68

Russel & Eunice Fey

Kathryn Sue Field '80

Gaylene Leslie Filipiak '69

Thomas M. Fink '78

Shana H. Fischer '88

Deborah Moskowitz Fleischner '71

Jesus Flores

Ellen Spencer Floyd '71

Lynn Janet Fluster '84

Peter L. Forster, M.D. '81

Robert Paul Fossum '88

Charles Anthony Fracchia '87

Kevin Michael Frandsen '85

Mr. & Mrs. Robert J. Frank

Andrew Sparky Frankel '84

Elisabeth Hernandez Frater '81

Leslie J. Friedlander '78

Donald Friedman '77

Meredyth Alpert Friedman '72

Matthew Garaway '85

Anne Johnston Gardner '71

Susan Whelen Gardner '70

Judy Schenk Geist '80

Lisa Geller '76

Other Contributors *(continued)*

- David Bruce Gerber '80
Christine Harestad Gibbons '71
John William Gilbert '87
Debra van Opstal Ginsberg '74
Dorie Parsons Giragosian '71
John E. Glass '81
Patsy Pocock Glickman '73
Ellen Marie Glikbarg '88
Garet Arthur Gluck '83
Carole Goldberg '79
Mark Charles Goldberg, M.D. '80
Andrew Charles Golden '82
Stuart Goldstein '86
Elizabeth Marty Goman '75
Alicia Beth Gordon '83
Michael Gosnell '88
Anne Elizabeth Graas '73
Amy Borenstein Graves '78
Louis Carl Green '74
Wendi Green '73
Donna Cutler Greenberg '69
Frank & Ursula Greer
Matthew Gross
Dario Grossberger '74
Roxanne M. Grosso '79
Anthony Salvatore Guardino '83
Ms. Lana Halliday
Carol McKenna Hamilton '77
David Mike Hamilton '73
Gary & Donna Hamilton
Leroy Hamilton, Jr. '78
Veronica Lewis Hamilton '79
Sandra Hansberger '78
Karen Groshong Haren '73
Charles F. Harper '78
John & Doris Harper
Carol Titlow Harris '73
Marilyn Williams Harris '70
Robin E. Harvey '74
Morris Brent Hasson '83
Lyle Hatridge '84
Mr. & Mrs. Richard P. Hauser
Andrew N. Havens '77
Susan M. Hay '81
Paula D Haywood '86
Alison DuBoff Hefter '78
Judy Heimowitz '81
Terrill Webb Helander '80
Deborah Sproat Henderson '73
Graham Scott Hendrickson '88
Linda Thomas Hendrickson '72
Alice Meier Henley '69
Melinda Henning '68
Sharon Keele Henson '74
Valentina Hertz '79
Renette Bedard Hier '79
Caroline Hightower
M. Michelle Hill '79
Rabbi & Mrs. Norman D. Hirsh
Donald H. Hittle '76
John P. Hoel '84
Kimberly Holl '86
Edward C. Holmes '85
Raquelle Norine Holmes '82
Reverend Elizabeth Elin Hooper '83
Thomas Ford Hoult
Rita Jepsen House, M.D. '79
Margaret Louise Howe '69
Peggy Schoen Hoyt '71
Jenefer Scripps Huntoon '71
Michael Hurwitz '75
Ann Hyde
Rosemarie Ibanez '86
Renee Naomi Iijima '80
Mr. & Mrs. George S. Ikehara
Linda Tomomi Inatsuka '88
Holly Plastino Inman '71
Carl Inoway
Barbara G. Isaacs '78
Larry & Georganne Ishii
Elizabeth Louise Jackson '88
Steve F. & Lynn T. Jackson
Susan Marie Jacobsen '81
Susan A. Jaffe '77
Dana Johnson '84
Ellen A. Johnson '75
Thomas M. Johnston '83
Mr. & Mrs. Pat Jones
Janet Krause Jones '73
Dennis W. Jung '78
Kay Kadowaki '74
Heather Kaneshige '85
Jimmy Yongku Kang '87
Edward Joseph Kania '81
Julie Kanter '78
Brett M. Kantrowitz '78
Frances Karttunen
Mr. & Mrs. James M. Keane
Steven Keller '86
Andrew Kempler '87
Roger Kempler '79
Christine Kendall '67
Diane Moskowitz Keppel '71
Elizabeth Jean Kerr '80
Helen L. Ketchum '79
Janice Kezirian '86
Jan Longfellow King '74
Niels Robert King '82
Devon Andrew Kinkead '83
Cynthia T. Kirk '88
Borg Randall Klein '83
Nancy Lu Klein '83
Ulvar Klein '84
Lee M. Kleinman '81
Betty Ann Kolner '74
Karen Girard Koreh '74
Judith Goo Koseki '72
G. Joy Kosobayashi '73
Kimberly Kralj '84
Nicholas J. Kukulian '72
Emily H. Kumai '75
Sharon Ilene Kurn '82
Ann Turner Kurrasch '82
John Philip Landgraf '84
Mr. & Mrs. Frederic Lane
Jane Goodsill Langner '75
Rosalva Haro Lannen '72
Anne Larsen '78
David Dunlap Larsen '74
Leslie D. Lass '77
Teri Ellen Lawson '82
Christine M. Layng '76
Sylvia Lee-Thompson '78
Gloria Lemus-Castro '88
Margaret Adams Leon '70
Dorisville Lewis
Matthew Lewis '82
Phillipa Cooley Lewis '73
Margaretta Lintz '74
Judith Lipsett '75
Michael Lipsky
Lawrence Little '76
Marcia Little '79
Todd Little '86
Mr. & Mrs. Morris Loeb
Nancy E. Loeb '81
Marsha Tadano Long '68
Claudia Schneider Looney '68
Kipley James Lytel '87
Elizabeth M. Macy '71
Jennifer J. Macy '72
Susan Ritter Magill '83
Timothy David Magill '83
Ellen M. Malarky '87
Francesca Manfredi '85
Devon B. Mansell '81
Diane Marcus '70
Susan Mareneck
Steven L. Marks '76
Stacey Marshall '83
Timothy K. Masterson '86
Kathryn Mansfield Matera '84
Anne Sprole Mauk '73
Lisa Ann Mayne '80
Caroline Reid McAllister '68
Adeline McCabe '92
Marjorie Patterson McClain '84
Mary Margaret McCuistion '80
Kate McLaine '77
Kimberly IdaBelle McNear '88
William McWhinney '87
Giles Whitaker Mead '87
Laura Pepe Mead '85
Andrea Mellon '78
Gina Milano '82
Anne McEntee Miller '75
Frank "Char" Miller '75
Max M. Miller, Jr. '79
Judy Minder-Lawford '82
R. Peter Mirkin, M.D. '81
Elizabeth "Bee" Simons
Mittermiller '75
Rito Molina
Mr. & Mrs. Shigeo Momohara
Patricia Monighan-Norrot '69
Mary Montenegro-Miller '80
Laura J. Moore '73
Susan Seligmann Moreno '75
Sarah Elizabeth Morgridge '71
Ellen Ruben Morris '78
Lee Ann Arnold Morris '69
Walter Morris '85
Lee and Ruth Munroe
Trudi Nagel '72
Peter Nardi
Elizabeth Narmore '86
Heather Rockhill Nelson '86
David Louis Neubert '88
Constance Brown Neustaetter '73
Barbara Horosko Nichols '71
Jane Gomez Nichols '81
Deborah Fine Norris '74
Emily Norris '73

Other Contributors (continued)

- Deborah Schnitzer Novack '70
 Ellen Miller O'Bannon '74
 Connie Weller O'Connor '71
 Julie Louise O'Hara '83
 Susan Obrow '76
 Ramona M. Okamoto '77
 Jodi Olson '86
 Carol E. Osborn '70
 Judy A. Ostendorff '69
 Carolyn Diane Ott '83
 Susan Page '68
 Gene Dyer Palmer '83
 Guy Victor Palmer '83
 Teri Pappas-Modes '79
 Valerie Parks-Lockwood '79
 Diane Watanabe Parro '80
 Jon George Parro '81
 Robyn Partridge
 Ann Robison Passmore '75
 Susan Hall Patron '69
 Christopher Peck '86
 Ella Pennington '82
 Mr. & Mrs. Charles W. Perkins
 James Robert Perry '71
 Lucia Watkins Perry '71
 Karen Phillips-Muney '76
 Katharyn Pinder '85
 Christie Mercer Platt '73
 Cheryl Polk '77
 Joshua S. Pollatsek '82
 Beatriz Pont '88
 Rebecca Pope '88
 Julia Anna Porter '75
 Martha Jeanne Porteus '82
 Leslie Bergstrom Postovoit '82
 Peter Christopher Postovoit '82
 Barbara Victoria Powazek '73
 Grace Carol Power '84
 Christopher Powers '85
 Terry Hastings Powers '85
 Linda Bishop Racicot '71
 Lindsay Munter Rahmun '74
 Glenda M. Raikes '76
 Mr. & Mrs. Felipe Ramirez
 Mr. & Mrs. Ronald G. Rayne
 Amy Oxman Reed '77
 Leila M. Reed '73
 Victoria Mortensen Regier '69
 June Reznikoff '70
 Robin Rhodes '77
 Elizabeth M. Rhone
 Nancy Hornblower Rice '68
 Christine Tubbs Rich '68
 Mr. & Mrs. Maurice A. Richmond
 Aileen Martha Rifkin '82
 Anne Elizabeth Riley '79
 Patricia Rivera '81
 Frank Anthony Rodriguez '86
 Page Lonnecker Rogers '74
 Jean Ann Romeril '76
 Gilberto Romero '88
 Kathryn Lynn Rominger '76
 Andrew Robert Rosenthal '84
 Christine Hehmeyer Rosso '69
 Sally Stroud Ruben '71
 Jacqueline C. Rubin '77
 Stephen N. Ruehr '79
 Jan Ruml-Wiebbecke '70
 Kristina M. Russell '79
 Carolyn Harvey Ryan '69
 Diane Ely Rzegocki '80
 Erica Sagan '79
 John & Irene Salazar
 Lidwina Salinas '73
 Sheli A. Sameth '83
 Joanne Garcia Sanchez '76
 Yvonne T. Sanchez '77
 Becky Melva Sands '88
 Regan Edward Sarwas '88
 Lisa Marie Satter '80
 Beverly Scales
 Maureen Schaaf '83
 Helen F. Schloerb '76
 David H. Schmutz '75
 Martha Hart Schulte '69
 Judy Meyer Scorza '73
 Mr. & Mrs. William P. Seckel
 Robert Alan Segil '85
 Nancy Ann Seidman '88
 Vicke Selk
 Kay Kazuko Sera '81
 Barbara Loeb Sevier '70
 Danny Shain '86
 Valeria Christian Hodges Shatzel '70
 Mr. & Mrs. Alfred E. Sheldon
 Sylvia Sher
 Ruth Sheridan '83
 Sarah L. Shinn '77
 Daria A. Shockley
 Johanna Siegmann '79
 Abbey Klein Sikes '68
 Anne H. Silver
 Marian Grant Silverman '74
 Brian Paul Simon '80
 Mr. Robert Simpson
 Karen B. Singer '75
 Linda Nemer Singer '74
 Laura Lee Sirott, M.D. '80
 Nicole Skinner '85
 Patsy Phillips Skowrup '69
 Marilyn Marie Sloan '80
 David W. Slocum '88
 Susan J. Smallsreed '75
 Kendal B. Smeeth '72
 Virginia Jane Smith '73
 Scott Snare '81
 Hattie Mayo Snell '71
 Linda Worley Souza '79
 Kathleen Spangler '72
 Courtney Spencer '82
 Ellen Speyer, Ph.D. '76
 Jayne Sproul '82
 Taf Elaine Squires '67
 John Alan Stanley '80
 Alexandria "Brooksie" Stanton '71
 Ann Stanton '68
 Ellen S. Stein '81
 Arthur & Frederica Steinberg
 Mr. & Mrs. Lester C. Stephens
 Sheryl Cooperman Stiefel '80
 David Straus '90
 M. Elizabeth Covington Streuli '73
 Sarah Ball Strickland '74
 Captain Glenn Matsuo Sugiki '82
 Lynn Gallagher Tanner '76
 Annalee Linch Tardiff '73
 Nicholas Taylor '85
 Cynthia Jean Thomsen '83
 Laura Ann Thum '87
 Terrence P. Tippie '83
 Jenee Lorraine Todd '82
 Nancy Lou Tracy
 J. Bruce Trahern '78
 Christopher Reid Trautman '87
 S. Travis '77
 Elaine Trevino-Walsh '87
 Peggy Watson Trindle '86
 Adrian "Butch" Turcotte, III '73
 Anne F. Turley '75
 Lisa Diane Turner '87
 Diana Coale Van Doren '69
 Peter James Van Zandt '85
 Marcel E. H. Vandooren '86
 Anne Hewitt Veazie '80
 Catherine Miller Vega '77
 Edd Vega '79
 Cornella Barbara Ver Halen '83
 Diane Vile '85
 Katina Vlastos '76
 Jules Vogel '85
 Judith M. Wahnnon '82
 Thomas L. Waldman '78
 Jay Scott Wallace '79
 Suzanne Wallen '76
 Gerry & Shelly Wallman
 Diana M. Walstrom '70
 Patricia Wangler '86
 Katherine Chambers Ware '82
 Stanford William Ware '83
 Thomas R. Watts '78
 Amy Weinstein '79
 Arica Miriam Weiss '87
 David H. Wells '79
 David & Martha Wertlieb
 Mary Maxwell West
 Jennifer Anne Westberg '87
 Mr. & Mrs. William A. Wetzel
 Kimberly Jo Wheeler '82
 Gregory David White '85
 Melissa White '85
 Linda Witwer Whitehurst '69
 Valorie L. Wiggins '78
 Davetta M. Williams '72
 Mary & Tom Williams
 Leslie Glah Williamson '85
 Mr. & Mrs. Jack R. Willis
 Lila Wills '77
 Susan Tanner Winn '69
 Sandra Winnick
 Steven Y. Winnick
 Mary Collision Wise '72
 Andrea Mack Wolf '82
 Judith Bloom Wolf '72
 Debra Anne Wong '81
 Jennifer Anne Woodward '83
 John Joseph Wyatt '82
 Candiss Watson Yoachim '70
 Jennifer Bunker Young '88
 John W. Zimmerman, Jr. '77
 Anna Lane Zucker '84
 Pamela Zwehl-Burke '69

Alumni by Class

Class of 1966

Jill Ford Harmon

Class of 1967

Kathryn W. Austin
Johnna Davilla Hickox
Christine Kendall
Eva-Marie Holzhey Sher
Taf Elaine Squires

Class of 1968

Kathy Gail Anderson
Betsy Bamford Ayres
Edi Schwartz Brannon
Elizabeth McGuire Braun
Janet Clover Burns
Laurel Wisner Chamberlain
Kathleen Rae Chernus
Carol L. Corden
Linda de Baun
Sarah Oakie Eppenbach
Penny Sutton Eppley
Mistie Erickson
Priscilla Fawcett
Karen Cummins Freeburg
Mary Beth Neal Garber
Kit McKercher Gardes
Kirsten A. Gronbjerg
Suzanne Beal Henkel
Melinda Henning
Margaret Lowe Houy
Ann Clary Judy
Margreta Klassen, Ph.D.
Kathleen Stahl Krucker
Linda Tremelling Landau
Susan Norwick Laufer
Robyn Olsen Letters
Marsha Tadano Long
Claudia Schneider Looney
Caroline Reid McAllister
Sarah Michael
Linda Carmona Monroe
Susan Page
Nancy Hornblower Rice
Christine Tubbs Rich
Susan Culver Schlickeisen
Iris Levine Shuey, M.D.
Abbey Klein Sikes
Deborah Deutsch Smith, Ed.D.
Ann Stanton
Elizabeth Witte Stokes
Maggie Habecker Vizio
Bobbie Zeifert Wright
Suzanne Silverman Zetterberg

Class of 1969

Connie Berkeley Abeloff
Elizabeth Williams Agajanian
Elizabeth Shirley Bagby
Ann Lawson Bilodeau
Sherilyn Danley Bloch
Lauren Arnold Brannen
Joanna Jarvis Brick
Ann Cozzens Brown
Nancy Rose Bushnell

Lindsey Brashear Cleveland
Marcia Whitley Curran
Barbara Potter Doult
Beryl Herzberg Druker
Sarah Lothrop Duckett
Carolyn Feuille-Le Chevallier
Gaylene Leslie Filipiak
Donna Cutler Greenberg
Irene Halouchko Harwood, Ph.D.
Alice Meier Henley
Nancy Nelson Hill
Gayle Breitbart Klusky
Douglas Ann Land
Robin Hall Leason
Kathleen Gilbert Levin
Barbara Thompson McLean
Patricia Monighan-Norrot
Lee Ann Arnold Morris
Marcia Green Nathanson
Robyn Grace Jolly Newkirk
Judy A. Ostendorff
Susan Hall Patron
Victoria Mortensen Regier
Christine Hehmeyer Rosso
Carolyn Harvey Ryan
Martha Hart Schulte
Patsy Phillips Skowrup
Judith Jennings Treas
Diana Coale Van Doren
Nancy Sanders Waite
Linda Witwer Whitehurst
Susan Tanner Winn
Lois Blackaller Wolfe
Carol Flint Yeager
Jo Deane Zalay-Gerard
Pamela Zwehl-Burke

Class of 1970

Marilyn Masquelier Adams
Virginia Moritz Allen-Griffin
Terri Cavanaugh Ashley
Linda Knowles Azad-Stobbe
Ann Hudelson Bartlett
Shelley L. Bernardo
Betsy Brown Braun
Susan Ann Brock
Cornelia Reynolds Cooper
Linnea Sowers Edwards
Susan Whelen Gardner
Marilyn Williams Harris
Karen Waldron Hiatt
Sally Wise Hilliard
Leslie Dashew Isaacs
Mary Ann MacNulty Karlsgodt
Maya Tsuji Lawrence
Margaret Adams Leon
Camille Lombardo
Diane Marcus
Nancy C. Martin
Minh-Linh Hue Nguyen
Deborah Schnitzer Novack
Carol E. Osborn
June Reznikoff
Jan Ruml-Wiebbecke
Barbara Loeb Sevier
Valeria Christian Hodges Shatzel

Susan Nemer Stuelke
Joanne Butera Turner
Alana McGuire Wallace
Diana M. Walstrom
Candiss Watson Yoachim
Janet Caffardo Yoss

Class of 1971

Anonymous
Candace Ryan Bonazzola
Janice Wahl Bowers
Marilyn Jean Clapp
Sharon P. Falsey
Deborah Moskowitz Fleischner
Ellen Spencer Floyd
Anne Johnston Gardner
Christine Harestad Gibbons
Dorie Parsons Giragosian
Kathryn Rupp Haas
Kathleen A. Howell
Peggy Schoen Hoyt
Jenefer Scripps Huntoon
Holly Plastino Inman
Elene Kallimanis
Diane Moskowitz Keppel
Mary Kushner
Elizabeth M. Macy
Emilie Bassett Mason
Lesley Oliver McClelland
Sarah Elizabeth Morgridge
S. Paddy O'Brien Morris
Barbara Horosko Nichols
Connie Weller O'Connor
Kristin Gottschalk Olsen
Abigail Wack Parsons
Lucretia Drane Peebles, Ph.D.
James Robert Perry
Lucia Watkins Perry
Linda Bishop Rubicot
Sally Stroud Rabin
Hattie Mayo Snell
Alexandria "Brooksie" Stanton
Emily Annette Stevens
Yvette Jackson Townsend

Class of 1972

Anonymous
Nancy Klein Abell
Janet Black
Kathleen S. Blunt
Elizabeth Brown-Dean
Nancy Penick Corcoran
Catherine Lee Davis
Gabrielle Dolphin
Elisabeth T. Ely
Meredyth Alpert Friedman
Linda Thomas Hendrickson
Nan Warhurst Jones
Joan M. Karlin
Judith Goo Koseki
Nicholas J. Kukanan
Rosalba Haro Lannen
Mary Vail Larson
Anne Oberlin Le Sure
Ellen Williams Lebel

Alumni by Class *(continued)*

Barbara Davidson Lewington
 Jennifer J. Macy
 Joan Haussler McGuire
 Trudi Nagel
 Meg Rose Perry
 Elizabeth A. Poe
 Wendy Robinson
 Bruce L. Ross
 Kendal B. Smeeth
 Kathleen Spangler
 Susan Cropsey Thompson
 Linda Ann Tirado, Ph.D.
 Janet Butler Westwood
 Davetta M. Williams
 Lesly Wilson
 Mary "Mollie" Collison Wise
 Judith Bloom Wolf

Class of 1973

Linda Spiegel Allen
 Susan Allport
 Cathryn Cate Bangs
 Sherwood Serbell Best
 Susan J. Bosse
 Katherine McKee Boyd
 Joy Sielen Brightup
 Sally Campbell
 Marilee A. Castenholz
 Elizabeth "Betsy" Cline
 Jill Cooper
 Carol Curinga
 Susan Rappleye Darlington
 Carol Hecker Davis
 Deborah Marion Deeble
 Velancia Mattingly DuPre
 Belinda Valles Faustinos
 Patsy Pocock Glickman
 Anne Elizabeth Graas
 Wendi Green
 David Mike Hamilton
 Susan Glikbarg Hanson
 Karen Groshong Haren
 Carol Titlow Harris
 Deborah Sproat Henderson
 Mary S. Holder
 Janet Krause Jones
 Katherine Marie Jones
 Kiyokazu Kitamura
 Patricia Sharkus Kokowicz
 G. Joy Kosobayashi
 Phillipa Cooley Lewis
 Alice Love
 Cheryl Mahony, M.D.
 Anne Sprole Mauk
 Jeffrey C McQueen
 Mary Amanda Mecke
 Laura J. Moore
 Constance Brown Neustaetter
 Emily Norris
 Robert Olson
 Marsha Palitz-Elliott
 Christie Mercer Platt
 Barbara Victoria Powazek

Leila M. Reed
 Anne Roberts
 Mary Dicke Robinson
 Lidwina Salinas
 Sara C. Schurr
 Judy Meyer Scorza
 Catherine Zeitman Seligman
 Virginia Jane Smith
 Anthony C. Stein, Ph.D.
 M. Elizabeth Covington Streuli
 Annalee Linch Tardiff
 Ruth Ellen Temkin
 Andrea Lee Thompson
 Adrian "Butch" Turcotte, III
 Madeline Pinsky Walker
 Mary Ann Zeman

Class of 1974

Debra Cahill Aczel
 Harriet Archibald-Woodward
 Linda Bass
 Katherine Oakleaf Bell
 Sandra Elaine Berenbaum
 Penelope Kaye Bloch
 Leslie A. Brents
 Patricia Hunter Cancellier
 Victoria Carmona
 Cathryn G. Cohen
 Portia Jackson Collins
 Leigh B. Cornelison
 Pamela H. David
 Suzan Schwantz Delaney
 Kathy Dietrich-Loest
 Pamela Duhl-Zbesko
 Debra van Opstal Ginsberg
 Linda Katherine Glimn
 Louis Carl Green
 Robert B. Greenberg
 Dario Grossberger
 Anne Louise Harnagel
 Robin E. Harvey
 Sharon Keele Henson
 Melinda Gold Johnston
 Kay Kadowaki
 Joyce N. Kaneda
 Gary R. Kates
 Jan Longfellow King
 Betty Ann Kolner
 Karen Girard Koreh
 Robert S. Koster
 David Dunlap Larsen
 Margaretta Lintz
 Carol Lynn Matsunaga
 Suzanne Bigham McElwee
 Deborah Fine Norris
 Ellen Miller O'Bannon
 Ronald Paine
 Katherine H. Peters
 Lindsay Munter Rahmun
 Mark L. Rivin
 Page Lonnecker Rogers
 Marian Grant Silverman
 Linda Nemer Singer
 Deborah M. Smith
 Stacy M. Sprowl
 Sarah Ball Strickland
 Jessica M. Swift

Class of 1975

Anonymous
 Margaret Tomo Adachi
 Diana Munguia Ajuria
 Lorita Lynn Bank, Ph.D.
 Rebeca E. Barron
 Susan E. Celniker
 Michael K. Christie
 Pamela Gail Curtis
 E. Nicole DeLong
 Lynn Diamond
 Charles R. Diaz
 Larry D. Dovenbarger
 James N. Esterkin
 Margo L. Fenn
 Wendy G. Glenn
 Elizabeth Marty Goman
 Jeffrey P. Gottlieb
 Bonnie Heikes
 Sandra Marshall Howard
 Michael Hurwitz, Esq.
 Ellen A. Johnson
 Karen L. Kahn
 Susan Knight
 Emily H. Kumai
 Susan E. Lancaster
 Jane Goodsill Langner
 Judith Lipsett
 Laurie Greenwood Maynard
 Linda Aborn McCarty
 Anne McEntee Miller
 Frank "Char" Miller
 Elizabeth "Bee" Simons Mittermiller
 Susan Seligmann Moreno
 Rabbi John R. Moscovitz
 Anita Ortega-Oei
 Ann Robison Passmore
 Lee C. Perry
 Julia Anna Porter
 Lynn Mirisch Rogo
 Mark Steven Scher
 Sharon Monsky Scher
 David H. Schmutz
 Diane S. Shammass
 Karen B. Singer
 Susan J. Smallsreed
 Mark J. Smith
 Carolyn Thon
 Anne F. Turley
 Vicki Diane Wurman

Class of 1976

Stacie Stutz Aaron
 Ellen Judy Alderman
 Helen Asbury
 Robert W. Barnes
 Dolores N. Barrett
 Laurie Melcher Benjamin
 Betsy Bisno
 Janet Kavanaugh Bower
 Carol Crossman Boyce
 Philip Mark Cravens
 Mary Sullivan Deacy
 M. Quinn Delaney
 Alison L. Denning

Alumni by Class *(continued)*

An McNamara Duclos
Peter J. Elson
Richard L. Fellows
Brian Folb
Minda Beth Friedman
Lisa Geller
Roberta S. Goldberg
Steven R. Goldsmith
Bruce G. Hecker
Donald H. Hittle
Mary C. Huntington
Christine M. Layng
Vickie Kaye Lester
Lawrence Little
Houston Putnam Lowry
Steven L. Marks
Michael R. Mitchell
Susan Obrow
Karen Phillips-Muney
Glenda M. Raikes
Pierre J. Ratte
Jean Ann Romeril
Kathryn Lynn Rominger
Terry L. Rosenmeier
Michael Rosenzweig
Randy Moskowitz Ross
Helen F. Schloerb
Susan Nathan Sholl
Mary Catherine Sophos
Ellen Speyer, Ph.D.
Bruce Lee Stein
Lynn Gallagher Tanner
Catherine Van Orman
Katina Vlastos
Sara Waldstein
Suzanne Wallen

Class of 1977

David Barr
Jill Minderhout Baskin
Thomas M. Deacy
Nicholas Neal Eaden
Anita Dann Friedman
Donald Friedman
Carol McKenna Hamilton
Denise Margolin Hankins
James B. Harnagel
Andrew N. Havens
Jan Leslie Hitchcock
Susan A. Jaffe
Leslie D. Lass
Maureen Lynch
Bruce Markell
Kate McLaine
John M. Mullooney
Ramona M. Okamoto
Michael F. Pierce
Patti Podesta
Cheryl Polk
Amy Oxman Reed
Robin Rhodes
Jacqueline C. Rubin
Yvonne T. Sanchez
Sarah L. Shinn
S. Travis

Catherine Miller Vega
Lila Wills
John W. Zimmerman, Jr.

Class of 1978

Christopher W. Alcalde
Meri Irwin Ben-Yehuda
Janice S. Berg
Lori B. Brooks
Susan Brooks-Warren
Lori Alyn Brown
June B. Charles
Betsey Keeler Cheitlin
Kenneth Alan Cheitlin
Roberta Childers
R. Denise Kelley Corey
Lisa DeFaria-White
Richard E. Duggan
Thomas M. Fink
Leslie J. Friedlander
Amy Borenstein Graves
Frank Russell Gray
Janis Saltzer Gurnick
Leroy Hamilton, Jr.
Sandra Hansberger
Charles F. Harper
Starr H. Harwin
Alison DuBoff Hefter
Mary Hammond Houser
Barbara G. Isaacs
Mickey Jannol
Dennis W. Jung
Deborah Bach Kallick
Julie Kanter
Brett M. Kantrowitz
Anne Larsen
Sylvia Lee Thompson
Patricia Stix Levy
Cheryl A. Marino
Michelle S. Marks, Ph.D.
Gail Mautner
Andrea Mellon
Ellen Ruben Morris
Pamela Gillis Mullooney
Sheri Huttner Rapaport
E. Scott Reckard
Kurt Rosenberg
Michael Lewis Rubin
Sandra Segal
Mark D. Shepard
William C. Sias
Judy Spiegel
Julie Stern
Linda S. Stevenin
Elizabeth Kei Suzuki
Maria Domike Thibeault
J. Bruce Trahern
Thomas L. Waldman
Thomas R. Watts
Valorie L. Wiggins

Class of 1979

Anonymous
Walter Manice Albrecht
Katherine Ehrenkranz Armstrong
William M. Ashley

Joanna C. Bendiner
Susan E. Berzon
Carol B. Cole
Alan Bruce Cowans
Catherine T. Curtis
Holly L. Echols
Jeffrey J. Faville
Carole Goldberg
Roxanne M. Grosso
Veronica Lewis Hamilton
Kent D. Harber
Valentina Hertz
Renette Bedard Hier
M. Michelle Hill
Rita Jepsen House, M.D.
Ellen Chaplan Jannol
Roger Kempler
Helen L. Ketchum
Marcia Little
Katherine Ellis McEnroe
Madeline Hart McReynolds
Max M. Miller, Jr.
Teri Pappas-Modes
Valerie Parks-Lockwood
Linda Reszetylo
Anne Elizabeth Riley
Stephen N. Ruehr
Kristina M. Russell
Erica Sagan
Caroline Weatherwax Scott
Richard Mark Shapero
Jeanne Ambruster Sherry
Johanna Siegmann
Linda Worley Souza
Edd Vega
Jay Scott Wallace
James W. Weber
Amy Weinstein
David H. Wells

Class of 1980

Ernesto Carlos Blanco
Lisa Jane Bridges
Sarah Elizabeth Brotherton
Arthur Stillman Brown
Karen Hochman Brown
Howard A. Caplan
Melissa Beth Cates
Susan Marie Chavira
Reid Lewis Dworkin
Kathryn Sue Field
Michael Filigenzi
Mark Steven Gaynor
Judy Schenk Geist
David Bruce Gerber
Cellin Phillip Gluck
Mark Charles Goldberg, M.D.
Barbara E. Hartz
Terrill Webb Helander
W. Andrew Huey
Renee Naomi Iijima
Elizabeth Jean Kerr
Steven Wade Lindseth
Thomas B. Lowery

Alumni by Class *(continued)*

Barry Ludlow
 Lisa Ann Mayne
 Mary Margaret McCuiston
 Jeannie Mintz
 Mary Montenegro-Miller
 Michael Jay Moody
 Diane Watanabe Parro
 Frieda Morgan Patterson
 Howard T. Pitts, IV
 Douglas Morse Price
 Mary Ann Forde Rockwell
 Diane Ely Rzegocki
 Lisa Marie Satter
 Berkley E.F. Shands
 Brian Paul Simon
 Laura Lee Sirott, M.D.
 Marilyn Marie Sloan
 John Alan Stanley
 Sheryl Cooperman Stiefel
 Anne Hewitt Veazie

Class of 1981

Anonymous
 Luis A. Aguilar
 William Worth Altaffer
 Josephine Razo Alvarez
 Rachael Ary-De Rozza
 Deborah Anderson Baker
 Diana Ryan Bottlik
 Rebecca Stephens DiDomenico
 Louis M. Driever
 Julie M. Duffin
 Lois Hall Dumont
 Peter L. Forster, M.D.
 Elisabeth Hernandez Frater
 John E. Glass
 Benjamin P. Goldfarb
 Susan Hale
 Susan M. Hay
 Judy Heimowitz
 Elizabeth Gerson Hjalmarson
 Susan Marie Jacobsen
 Edward Joseph Kania
 Kristi L. King
 Margaret King
 Lee M. Kleinman
 Melinda L. Koziol
 J. Scott Ladd
 Nancy E. Loeb
 Kiamara Siobhan Ludwig
 Devon B. Mansell
 R. Peter Mirkin, M.D.
 Nancy Molin
 Jane Gomez Nichols
 Jon George Parro
 Patricia Rivera
 Claire Laura Chapelle Robertson
 Kay Kazuko Sera
 Scott Snare
 Diane M. Snell
 Susan Ranslow Solorzano
 Ellen S. Stein
 Alene K. Stolz
 Maria Margaret Sutter
 M. Robert Warden
 Debra Anne Wong

Class of 1982

David S. Arkin
 Bruce T. Bader
 Bridget Lynn Baker
 Molly Jane Bayless-Wu
 Melinda C. Berning
 Lana Marie Bobele
 Donaldson K. Brown
 Don William Ceglar
 Kelli Anne Craft
 Carita Crawford
 Karen Elaine Crocker
 Larry Diamond
 Darcel Detering Dillard
 Eric Anthony Douglas
 K. Michelle Vorih Doyle
 Jeffrey James Geraci
 Andrew Charles Golden
 Lori Plante Goldfarb
 Elsie Hamilton
 Raquelle Norine Holmes
 Valerie Krieger Jahan, M.D.
 Sadhna Kaur Khalsa
 Niels Robert King
 Sharon Ilene Kurn
 Ann Turner Kurrasch
 Ellen Debra Lauterbach
 Teri Ellen Lawson
 Matthew Lewis
 Gina Milano
 Timothy Sanford Miller
 Judy Minder-Lawford
 Thomas Henry Moore
 Anthony Allen Mosel
 Ella Pennington
 Darlene C. Plaisted
 Joshua S. Pollatsek
 Paul D. Popejoy
 Martha Jeanne Porteus
 Leslie Bergstrom Postovoit
 Peter Christopher Postovoit
 Mark Alan Reckard
 Aileen Martha Rifkin
 Margaret Louise Roth
 Andrea Sklar Sidorow
 Courtney Spencer
 Jayne Sproul
 Captain Glenn Matsuo Sugiki
 Jenee Lorraine Todd
 Judith M. Wahnnon
 Katherine Chambers Ware
 Kimberly Jo Wheeler
 Andrea Mack Wolf
 John Joseph Wyatt
 Lorna Fusako Yamane

Class of 1983

Mae Cutler Augarten
 John Arthur Barnes
 John Baronian
 Lisa J. Bourgeault
 Jeff Bourne
 Thomas Wayne Brock
 Jeanette Woo Chitjian
 Junita Ciputra
 Warren Clark, III

Michele Renee Conliffe
 Gregory Sheldon Dahl
 Ann Elizabeth Danelski
 Garett Arthur Gluck
 Alicia Beth Gordon
 James Gottlieb
 Anthony Salvatore Guardino
 Morris Brent Hasson
 Reverend Elizabeth Elin Hooper
 Thomas M. Johnston
 Devon Andrew Kinthead
 Borg Randall Klein
 Nancy Lu Klein
 Susan Ritter Magill
 Timothy David Magill
 Stacey Marshall
 Thomas Jefferson Miller
 Julie Louise O'Hara
 Carolyn Diane Ott
 Gene Dyer Palmer
 Guy Victor Palmer
 Martha Ellen Quintana
 Sheli A. Sameth
 Maureen Schaaf
 Ruth Sheridan
 Mary Lederle Stearns
 Cynthia Jean Thomsen
 Terrence P. Tippie
 Roy Edward Tomkins
 Cornella Barbara Ver Halen
 Stanford William Ware
 Mark Philip Warshauer
 Valarie Suzet Windle
 Katharine Leighton Wolfe
 Jennifer Anne Woodward
 Lisa Todd Zhito

Class of 1984

Anonymous
 Katrelya Anne Angus
 James R. Arthur
 Dana Gentry Bain
 Erin Riley Borden
 Annabel F. Buckley
 Joan Clare Cantrell
 Joyce E. Chadwick
 Richard Chute
 Mia Darbonne
 Jane Michelle Epsten
 Lynn Janet Fluster
 Andrew Sparky Frankel
 Sarah E. Gamble
 Jenniphir Goodman
 Lyle Hatridge
 John P. Hoel
 Dana Johnson
 Ulvar Klein
 Kimberly Kralj
 John Philip Landgraf
 Kathryn Mansfield Matera
 Marjorie Patterson McClain
 Grace Carol Power
 Andrew Robert Rosenthal
 Chadwick F. Smith, Jr.
 Dennis C. Smith
 Anna Lane Zucker

Alumni by Class *(continued)*

Class of 1985

Eric Bain
Sharon Brooks
Cameron Elizabeth Brown
Marka Carson
Stanley W. Casselman
Jeannine Chang
Kevin Collins
Patricia Cutler
Kelly Ann Dryden
Peter Dunay
Marilyn Dunn
Linda Eisner
Micheline Esposito
Stuart Farber
Kenneth Farrow
Joel Fields
Kevin Michael Frandsen
William Gaede, III
Matthew Garaway
Peter Gee
Edward C. Holmes
Heather Kaneshige
Chandre Kipps
Rosa Liu-Lundborg
Francesca Manfredi
Tamsin Mayers
Laura Pepe Mead
Walter Morris
Yvonne Norte
Gloria Ortiz-O'Brien
Bernadette Palombo
Katharyn Pinder
Christopher Powers
Terry Hastings Powers
Robert Alan Segil
Alfred J. Shine, Jr.
Nicole Skinner
Nicholas Taylor
Peter James Van Zandt
Diane Vile
Jules Vogel
Gregory David White
Melissa White
Leslie Glah Williamson

Class of 1986

Tammy Allen
Matthew Baer
Elizabeth Keira Bobrow
Kaaren Boothroyd
John Cardoza
Briar Carroll
Rebecca Cleek
Kelly Lingerfeldt Doss
Roy Durnal, Jr.
Sheree Lynn Estes
Tacy Hess Gaede
Stuart Goldstein
Claire E. Hackett
Paula D Haywood
Kimberly Holl
Rosemarie Ibanez
Steven Keller
Janice Kezirian
Angelique L'Amour

Todd Little
Timothy K. Masterson
Elizabeth Narmore
Heather Rockhill Nelson
Neil F. Norton
Jodi Olson
Christopher Peck
Susan Pratt
Frank Anthony Rodriguez
Danny Shain
Elizabeth Baker Steinberg
Jason Steinberg
Peggy Watson Trindle
Marcel E. H. Vandooren
Patricia Wangler
Bradford Wolfe

Class of 1987

Tremaine Atkinson
Lance William Auer
Jennifer Lee Bale
Helen Rose Bonnell
Erin Braun-Duffy
Alison Ruth Cain
Susan D. Calvin
Lisa Maria Campo
Joyce A. Cory
Maria Theresa D'Alessandro
Elaine Dawn Evans
Charles Anthony Fracchia
John William Gilbert
David S. Greensfelder
Bea Matas Hollfelder
Jimmy Yongku Kang
Andrew Kempler
Karin Marie Labby
Kipley James Lytel
Carolyn Sue Maberry
Ellen M. Malarky
William McWhinney
Giles Whitaker Mead
Laura Ann Thum
Christopher Reid Trautman
Elaine Trevino-Walsh
Lisa Diane Turner
Arica Miriam Weiss
Jennifer Anne Westberg
Adriana Yanez

Class of 1988

Laura McClintic Burr
Anne Shaw Davidson
Carolyn Noelle DeWitt
Thomas William Douglas
Marsha Ann East
David Lipton Ellner
Shana H. Fischer
Robert Paul Fossum
Theodore Gaulin
Ellen Marie Glikbarg
Michael Gosnell
Graham Scott Hendrickson
Linda Tomomi Inatsuka
Elizabeth Louise Jackson
Cynthia T. Kirk
Gloria Lemus-Castro

Thomas James Mullins
David Louis Neubert
Beatriz Pont
Rebecca Pope
Gilberto Romero
Lola Esparza Ruiz
Becky Melva Sands
Regan Edward Sarwas
Nancy Ann Seidman
David W. Slocum
Patrick Yee
Jennifer Bunker Young

Class of 1989

Tracy Adams
Sally Arlen
Ceth Ashen
Leslie Barnes
Susan Bernstein
Sara Burr
Sherry Bushnell
Brook Claman
Daniel Daley
Catherine Elliott
Justine Girellini
Jason Gottlieb
Andrew Hauser
Natalie Hausman
Guy Hendricksen
Linda Indaburu
Winston Inoway
Kendall Jones
Mary Karnowsky
Laura Kerman
Stacey Kyman
Michael Luciani
Mark Morrison
Brian Muncaster
Michael Navarro
Caroline Nersessian
Karen Nilsen
Maryanne Quinnan
Kathleen Reilly
James Reynolds
Courtney Roth
Marni Rozet
Ellen Schnier
Paramount Shaw
Evelyn Shea
Jennifer Smaltz
Lynn Tegen
Jill Weiser

Faculty/Staff

Carl F. Bandelin
 Barbara B. Bergmann
 Alfred Bloom
 David J. Coons
 Rose M. Cullen
 David & Josephine DeYoung
 Lois Hall Dumont '81
 Frank L. Ellsworth
 Robert Paul Fossum '88
 Mr. & Mrs. Stephen L. Glass
 Allen Greenberger
 Daniel A. Guthrie

Carl Hertel
 Agnes Moreland Jackson
 Jack Tak-Fok Ling
 Charles W. Martin, Jr.
 Marilyn Micheau
 Sheryl F. Miller
 Lee & Ruth Munroe
 Peter Nardi
 Jon George Parro '81
 Abigail Wack Parsons '71
 Paul Ranslow
 Ellin J. Ringler-Henderson

John R. Rodman
 Beverly Scales
 Vicke Selk
 Mr. & Mrs. Alfred E. Sheldon
 Daria A. Shockley
 Lynne Spear
 Jacqueline Levering Sullivan
 Werner Warmbrunn
 Bradford Wolfe '86
 Katharine Leighton Wolfe '83
 Suzanne Silverman Zetterberg '68

Parents Annual Fund

Anonymous
 Mr. & Mrs. Hirschel Abelson
 Mr. Lionel Achuck, Sr.
 Debra Cahill Aczel '74
 Susanne S. Addicott
 Doris Alm-Hart
 Mr. & Mrs. Paul Alter
 Ann Warner Arlen
 Mr. and Mrs. Michael Arlen
 Mrs. Rosamond Arthur
 Mr. & Mrs. Robert K. Ashe
 Robert M. Ashen & Ann Garry
 Constance A. Austin
 Mr. & Mrs. Robert M. Ballinger
 Dorianne Bass
 John & Anne Bedell
 Mr. & Mrs. Maxwell M. Belding
 Barry Benjamin
 Henry & Linda Bennett
 Anne Koppel Bienn Conway
 Dr. & Mrs. Amasa S. Bishop
 Mr. & Mrs. Robert A. Black
 G. Thomas Bowers
 John A. & Sally J. Broderick
 Sara L. Burr
 Mr. & Mrs. Maurice Carmona
 Annette L. Casey
 Mr. & Mrs. George P. Caulkins, Jr.
 Mr. & Mrs. Philip Cavanaugh
 Mr. & Mrs. Michael Chait
 Debra L. Christian
 Mr. & Mrs. Gerald B. Church
 Dr. & Mrs. Morris Claman
 Mr. & Mrs. Charles L. Cleek
 Mr. & Mrs. Paul H. Cohen
 Mr. & Mrs. Stuart Cohen
 Mr. & Mrs. A. Thomas Conlin
 Mrs. Damaris J. Copperud
 Ron and Jan Corran
 Wendy L. Crawford
 Mr. & Mrs. Gordon T. Curtis
 Jim & Adele Dalsimer
 Edward V. Damutz
 Mr. & Mrs. James C. Davis, Jr.
 Mr. & Mrs. George A. Dean
 Helen D. Deeley
 Mr. & Mrs. Charles Devine
 William & Janet Dickey
 R. D. Dignan, M.D.
 Alan & Joan Djanogly
 Ruth C. Dolphin
 Mr. & Mrs. Nicholas R. Doman
 Sally & Cecil Drinkward

Dr. & Mrs. Marvin I. Dunn
 Stephen M. Edwards
 William H. Elson, Jr.
 Dr. & Mrs. E. A. Emmett
 Drs. Thomas & Maria Eschen
 Mr. & Mrs. Enrique Escudero
 Ms. Florence A. Falk
 Mr. & Mrs. Frank Fenton
 Russel & Eunice Fey
 Rabbi & Mrs. Harvey J. Fields
 Dr. & Mrs. Hugh Firemark
 Mr. & Mrs. Bertram Firestone
 Robert & Bonnie Fisher
 Dr. & Mrs. Delbert Fitchett
 Jesus Flores
 Mr. & Mrs. Robert J. Frank
 Mr. & Mrs. Abraham Friedman
 Jane Fraser Fulcher
 Mr. & Mrs. J. Peter Gattermeir
 Rita L. Giles
 Mr. & Mrs. Bud Glickman
 Mr. & Mrs. Peter S. Gold
 Samuel & Miriam Goldfarb
 Frank & Ursula Greer
 Ms. Lana Halliday
 Gary & Donna Hamilton
 Jill Ford Harmon '66
 John & Doris Harper
 Dr. & Mrs. Irwin Harris
 Mrs. Glenn A. Hastings
 Mr. & Mrs. Richard P. Hauser
 Caroline Hightower
 Mr. & Mrs. E. Franklin Hirsch
 Rabbi & Mrs. Norman D. Hirsh
 Mr. & Mrs. Louis Hochman
 Mr. & Mrs. Floyd G. Hoffman
 Mr. Gerald G. Hotchkiss
 Ann Hyde
 Mr. & Mrs. George S. Ikehara
 Mr. & Mrs. Carl Inoway
 Larry & Georganne Ishii
 Steve F. & Lynn T. Jackson
 Mr. & Mrs. Samuel L. Jenkins
 Ms. Gwendolyn R. Johnson
 Patricia Johnston
 Hugh & Diane Jones
 Mr. & Mrs. Pat Jones
 Thomas & Sarah Kailath
 Mr. & Mrs. Lincoln T. Kaneshige
 Mr. Wallace Kantrowitz
 Frances Karttunen
 Mr. & Mrs. John A. Kazmierowski
 Mr. & Mrs. James M. Keane

Joseph & Lou Anne Kellman
 Mr. & Mrs. Robert S. Killebrew, Jr.
 Lawrence & Anna Gay Kim
 Margaret King '81
 Mr. & Mrs. Steven Kipper
 Mr. & Mrs. Harold F. Kleinman
 Mr. & Mrs. Frederic Lane
 Mrs. Karen Chase Larson
 Anne & Alex Lauterbach
 Mary Ann Lawson
 William & Patricia Lear
 Mrs. Henry Lesse
 Mr. & Mrs. Harold A. Levin
 Mrs. Margot Levin
 Michael Lipsky
 Ernest A. Long
 Wayne & Sherry Longfield
 Herbert Luxenberg
 Mr. John Maguire
 Dr. & Mrs. Howard Maibach
 Ellie & Dick Mansfield
 Susan Mareneck
 Edward S. Masket
 John W. McNear
 Mr. Harold S. Melcher
 Mr. & Mrs. Morton Meyerson
 Mr. & Mrs. Arnold Miller, Jr.
 Mr. & Mrs. Bernard Mintz
 Mr. & Mrs. Mike Mitrovich
 Dr. & Mrs. Charles E. Mize
 Mr. John C. Moffitt
 Rito Molina
 Mr. & Mrs. Shigeo Momohara
 Elizabeth L. Morrison
 Mr. & Mrs. Robert Mosbacher, Jr.
 Mr. & Mrs. W. Newell Nelson, Jr.
 Dr. & Mrs. Edward Nersessian
 Gerwin & Karen Neumann
 Mr. & Mrs. Harry Newman, Jr.
 John & Sheila Nichols
 Mr. & Mrs. John C. Parish
 Nan & Bruce Parker
 Robyn Partridge
 Mr. & Mrs. Charles W. Perkins
 Ruth & Barry Phillips
 Mr. & Mrs. Felipe Ramirez
 Mr. & Mrs. Maurice R. Raviol
 Mr. & Mrs. Ronald G. Rayne
 Elizabeth M. Rhone
 Mr. & Mrs. Jack P. Richman
 Mr. & Mrs. Maurice A. Richmond
 Kirt & Ellen Ritter
 John & Gwen Rodman

Parents Annual Fund *(continued)*

A. Bruce & Lois Rozet	Mr. & Mrs. John Simpson	Nancy Lou Tracy
Joseph & Susie Saito	Dr. Andrew Sivak	Mr. & Mrs. Cruz A. Uribe
John & Irene Salazar	Dr. & Mrs. Chadwick Smith	Gerry & Shelly Wallman
John & Louise Sampson	Judith & Charles Smith	Miriam K. Warshow
Sue Sandson	Mr. & Mrs. Wesley J. Smith	Jack & Kristine Watkins
Mr. Theodore Schlissel	Mr. & Mrs. George R. Sprague	Myra & David Weiss
Mr. & Mrs. Burton H. Schneider	Betty J. Steen	David & Martha Wertlieb
Mrs. Tomiko Schoell	Dr. & Mrs. Arthur D. Steffee	Mary Maxwell West
Mr. & Mrs. Robert L. Schoen	Arthur & Frederica Steinberg	Mr. & Mrs. William A. Wetzel
Mr. & Mrs. William P. Seckel	Vivian & Joseph Steinberg	Mary & Tom Williams
Mr. & Mrs. Nicholas Shammass	Ann Compton Stephens	Mr. & Mrs. Jack R. Willis
Mr. & Mrs. Sidney J. Sheinberg	Keith & Elizabeth Witte Stokes '68	Sandra Winnick
Mr. & Mrs. David V. Shields	Beth C. Strader	Steven Y. Winnick
Mr. & Mrs. John Shipley	Jack & Barbara Straus	Mr. Robert K. Wolfe
David B. Silberman, Jr.	Mr. & Mrs. William W. Taft	Dr. & Mrs. Suyenori Yamada
Anne H. Silver	Mr. & Mrs. Robert H. Takeuchi	Ray & Nora Zanarini
	Mr. & Mrs. La Mar M. Toombs	Howard & Linda Zuker

Parents Association Members

Mr. & Mrs. Hirschel Abelson	Peggy & Dennis Frank	Ruth & Barry Phillips
Mr. Lionel W. Achuck	Jane Fraser Fulcher	Carol & Michael Pliner
Doris Alm-Hart	Mr. & Mrs. J. Peter Gattermeir	Mr. & Mrs. James K. Polese
Norman & Sallie Ballantine	Nelson & Priscilla Gibbs	Dave & Jo Rianhard
Mr. & Mrs. Robert Ballinger	Mr. & Mrs. Martin Gilbert	Ellen & Kurt Ritter
Bernice & Stephen Baran	Rita Giles & John Hughes	Rick Rodriguez
Dr. & Mrs. Walter B. Barnett	Mr. William B. Giles	A. Bruce & Lois Rozet
Dr. Joseph S. & Barbara Barrera	Bud & Judith Glickman	Rev. David & Ruth Sandberg
Gene & Neil Barth	Vicki Gomez-Givens	Mr. & Mrs. Richard Schachet
Mrs. Dorothy Barton	Dr. & Mrs. George Gura	Theodore Schlissel
Dorianne Bass	Carol Rogoff Hallstrom	Barbara & Martin Shapiro
Barry R. Benjamin	Dick & Marilyn Hannah	Mr. & Mrs. David V. Shields
Dr. Michael & Carol Berkus	Jill Ford Harmon '66	John & Joan Shipley
Carol & John Berry	Robert N. & Sharon R. Hendricks	Mr. & Mrs. David B. Silberman, Jr.
Jim & Josette Blackmore	Philip L. Herman	John & Mary Simpson
Bette & Milton Blain	Mr. & Mrs. Floyd G. Hoffman	Michael Slack
James Bolen	Stuart A. Holmes	Donald C. Smaltz
Jean Shinoda Bolen, M.D.	Mr. & Mrs. Gerald Hotchkiss	Mark & Lorrie Smith
Harvey & Harriet Botwin	Charles & Connie Huffine	Tony & Barbara Smith
Mr. & Mrs. G. Thomas Bowers	Ann Hyde	Jim & Liz Speer
George & Emily Broadbent	Larry & Georganne Ishii	L. John & Carol W. Spring
Mr. & Mrs. W. Ward Carey	Michael and Alana Ladd Jackson	Mrs. Kenneth W. Steen
Mr. & Mrs. George P. Caulkins, Jr.	Kathleen & Joe Juwasha	Arthur & Frederica Steinberg
Mr. & Mrs. Philip Cavanaugh	Lincoln & Michiko Kaneshige	Mr. & Mrs. Walter H. Sterling, Jr.
Jean E. Chases	Van & Merrill Kasper	Keith and Elizabeth Witte Stokes '68
Debra L. Christian	John & Nancy Kazmierowski	Jack & Barbara Straus
Paul & Rita Cohen	Mr. & Mrs. Robert S. Killebrew, Jr.	Howard & Leslie Sturtz
Stuart & Margaret Cohen	Mr. & Mrs. Steven Kipper	Mr. & Mrs. William W. Taft
John & Valerie Condon	Rose Kurkland	Yoshimasa Tanaka
John & Susan Cranston	Robert & Karen Larson	Barry & Louise Taper
Hazel & Jim Davis	Margot Levin	Louis J. & Marilyn B. Tedesco
Tony & Kathy DeLap	Ms. Natalie Salter & Mr. Sidney D. Levin	Mr. & Mrs. William Thigpen
Dr. & Mrs. Charles J. Devine, Jr.	Joe & Brigit Luciani	Nancy & Dennis Todd
William & Janet Dickey	Susan MacGillivray	Tom & Mary Twist
Alah & Joanie Djanogly	John D. & Lillian P. Maguire	Dave & Trudy Vestal
Dorothy & Richard Dorsay	Allen & Marcia Marrinson	Gerry & Shelly Wallman
Julian & Lucinda Dowell	Edward S. Masket	Jack & Kristine Watkins
Cecil & Sally Drinkward	Guy & Peggy McClellan	Bud & Carmen Weisbart
Mr. & Mrs. Henry M. Duque	Rev. & Mrs. Paul A. McDaniel	Myra & David E. Weiss
Stephen M. Edwards	John & Barbara McDonald	Mary Maxwell West
Bob Epstein	Joy & Earl R. McNally	Don & Linda Westfall
Mr. & Mrs. Sanford Evans	Mr. & Mrs. Morton Meyerson	Pat & Bill Wetzel
Judie & Frank Fenton	Bob & Amy Milner	Jack R. & Benette M. Willis
Lilo & Modelle Fink	Dan & B.J. Morton	Hal & Sally Woollard
Bertram Firestone	Mr. & Mrs. John J. Nichols	Lonnie Zwerin
Dr. & Mrs. Delbert A. Fitchett	Gerry & Linda Nordberg, Jr.	
Linda & Jeff Forsman		

Matching Gifts

Because they can double or triple the impact of an individual's gift to the College, matching gifts are especially appreciated. Pitzer is grateful to those supporters who directed a matching gift to the College, and to the following organizations whose participation in matching gift programs enhanced their employee's gift.

AT&T Foundation
The Aerospace Corporation
American Express Foundation
American General Group Insurance
Ampex Corporation
ARCO Foundation
Ball Corporation
Carson Pirie Scott Foundation

The Chase Manhattan Bank
Chevron U.S.A. Inc.
Conoco Inc.
Drexel Burnham Lambert Inc.
Dun & Bradstreet Corporation
The First Boston Foundation
First National Bank of Chicago
Foundation
GTE California
The General Electric Foundation
Goldman, Sachs & Co.
Hercules Incorporated
Hewlett-Packard
Hughes Aircraft Company
International Business Machines
Knight-Ridder, Inc.
The Maryland National Foundation
McDonnell Douglas Foundation
Merrill Lynch Foundation
Morgan Guaranty Trust

New York Life Foundation
New York Stock Exchange
Pacific Mutual Life Insurance
Company
Peat Marwick Main & Company
Pfizer Inc.
The Prudential Insurance Company
of America
The Quaker Oats Foundation
RCA Corporation
Raytheon Company
Sara Lee Foundation
Security Pacific Foundation
Southern California Gas Company
Times Mirror Company
Transamerica Corporation
The Travelers Insurance Companies
Weingart Foundation
Wells Fargo Bank

Donors to the Independent Colleges of Southern California

The Ahmanson Foundation
Arthur Andersen and Co.
ARCO Foundation
AT&T
Avery
Milo W. Bekins Foundation
Bullock's/Bullock's Wilshire,
I. Magnin
Burlington Northern Foundation
Chevron U.S.A. Inc.
James S. Copley Foundation
Deluxe Check Printing Corporation
Foundation
Carrie Estelle Doheny Foundation
Joseph Drown Foundation
First Interstate Bank of California
Foundation

The Fluor Foundation
Great Western Bank
GTE California
Ernest W. and Jean D. Hahn
Foundation
Hughes Aircraft Company
IOLAB
Kaufman and Broad Home
Corporation
Kraft General Foods
Foundation of the Litton Industries
Lockheed Leadership Fund
Los Angeles Herald Examiner
Milken Family Foundation
Pacific Enterprises
Pacific Mutual Foundation
Pacific Telesis Foundation

Parsons Foundation Challenge
Pfaffinger Foundation
Pomona First Federal
Rockwell International
Santa Anita Foundation
Santa Fe Southern Pacific
Foundation
Security Pacific Foundation
Stuart Foundations
The Times Mirror Foundation
Transamerica Occidental Life
Union Pacific Foundation
Unocal Foundation
The UPS Foundation
The Vinnell Foundation
Von der Ahe Foundation
Wells Fargo Foundation

Corporation and Foundation Gifts

Through individual grants, matching gift programs, or the efforts of the Independent Colleges of Southern California, corporations and foundations have furnished gifts that are critical to the life of the College.

S & A Agate Foundation
AT&T Foundation
The Aerospace Corporation
The Ahmanson Foundation
American Express Foundation
American General Group Insurance
Ampex Corporation
ARCO Foundation

Ball Corporation
Barash & Hill
Blum-Kovler Foundation
The Boston Stores
Cal-Surance Associates
The Capital Group
Carolco Pictures
Carson Pirie Scott Foundation
The Chase Manhattan Bank
Chevron U.S.A. Inc.
Commercial Graphics Corporation
Compton Foundation
Conoco Inc.
Deluxe Check Printers
Drexel Burnham Lambert
Dun & Bradstreet Corporation
The First Boston Foundation

First National Bank of Chicago
Foundation
The Fluor Foundation
GTE California
The General Electric Foundation
Goldman, Sachs & Company
The John Randolph and Dora
Haynes Foundation
Hercules Incorporated
Hewlett-Packard
Hollywood Canteen Foundation
Hughes Aircraft Company
IOLAB Corporation
International Business Machines
Janss Corporation & Citycenter
Corporation

Corporation and Foundation Gifts *(continued)*

Janss Foundation	New York Stock Exchange	Salem Foundation
Joseph Drown Foundation	Pacific Theatres Corporation	Sara Lee Foundation
Felix and Helen Juda Foundation	Pacific Mutual Life Insurance	The Sears-Roebuck Foundation
Kaufman and Broad Home	Company	Security Pacific Foundation
Corporation	The Ralph M. Parsons Company	Sigmund Silberman Foundation
W. M. Keck Foundation	The Ralph M. Parsons Foundation	Southern California Edison
Knight-Ridder, Inc.	Peat Marwick Main & Company	Company
Lorimar Productions Inc.	Albert Penick Fund	Southern California Gas Company
MCA Inc.	Pfizer Inc.	The Spencer Group
Manatt, Phelps, Rothenberg &	Pomona First Federal Savings &	Stuart Foundations
Phillips	Loan Association	Technicolor Inc.
Raymond and Gertrude Marshall	Sandra Press	Times Mirror Company
Charitable Trust	Charitable Foundation	Transamerica Corporation
The Maryland National Foundation	Price Pfister, Inc.	The Travelers Insurance Companies
Mattel, Inc.	Price Waterhouse	Twentieth Century Fox Film
George H. Mayr Foundation	The Prudential Insurance Company	Corporation
McDonnell Douglas Foundation	of America	Union Pacific Foundation
Giles W. and Elise G. Mead	The Quaker Oats Foundation	The University Club of Claremont
Foundation	RCA Corporation	I. N. and Susanna H. Van Nuys
Merrill Lynch Foundation	Raytheon Company	Foundation
Minnesota Mining Manufacturing	Mabel Wilson Richards Scholarship	Warner Bros.
Morgan Guaranty Trust	Fund	Weingart Foundation
Mosbacher Foundation Inc.	Harry W. and Virginia Robinson	Wells Fargo Bank
National Science Foundation	Trust	The Lester Witte Foundation
New York Life Foundation	The James and Edith Ross	
	Foundation	

Special Gifts

Capital Gifts

Donors of Capital Gifts have made important contributions toward Pitzer's endowment, construction, renovations and other capital projects. The College gratefully acknowledges their generosity. The following donors have provided the College with Capital Gifts of \$5,000 or more.

Mr. & Mrs. Hirschel Abelson
Mrs. Rosamond Arthur
Mr. & Mrs. Maxwell M. Belding
Florence Mead Benjamin
Penelope Kaye Bloch '74
Blum-Kovler Foundation
Mr. & Mrs. Michael Chait
Mr. & Mrs. Harvard K. Hecker
Mr. & Mrs. Felix Juda
Felix and Helen Juda Foundation
Ivan & Deborah Bach Kallick '78
Mr. Bruce Karatz
W. M. Keck Foundation
Mrs. Karen Chase Larson
Mrs. Margot Levin
MCA Inc.
Raymond and Gertrude Marshall
Charitable Trust
Mr. & Mrs. Raymond G. Marshall
Mattel, Inc.
George H. Mayr Foundation

Giles W. and Elise G. Mead
Foundation
Giles W. Mead, Jr.
Florence Mead Benjamin
Mr. David W. Mills
Elinor & Frank Nathan
The Ralph M. Parsons Foundation
George & Edith L. Piness
Kenneth S. & Jean M. Pitzer
The James and Edith Ross
Foundation
Mr. & Mrs. Sidney J. Sheinberg
I. N. and Susanna H. Van Nuys
Foundation
George H. Whitney
Mr. Robert K. Wolfe

The following donors have provided the college with Capital Gifts of up to \$4,999.

S & A Agate Foundation
Constance A. Austin
William M. Ashley '79
Mr. John W. Atherton
Sherwood Serbell Best '73
Deluxe Check Printers
Mr. & Mrs. Nicholas R. Doman
Peter J. Elson '76
Mrs. Clark R. Gamble
Kit McKercher Gardes '68
Peter Gee '85
Nancy Gettelman

Benjamin P. Goldfarb '81
Mr. & Mrs. Charles W. Greenleaf
Kenneth W. Hirsch '75
Agnes Moreland Jackson
Mrs. Charlotte Linder
Kane Angelique L'Amour '86
Mary Vail Larson '72
Mary Ann Lawson
Steven Wade Lindseth '80
Mr. & Mrs. Mark Loeterman
Marietta M. Long
Thomas B. Lowery '80
Houston Putnam Lowry '76
Michael Luciani '89
Kiamara Siobhan Ludwig '81
Mary Amanda Mecke '73
Sheryl F. Miller
Michael Jay Moody '80
Mr. & Mrs. Robert Mosbacher, Jr.
Mosbacher Foundation Inc.
Robyn Jolly Newkirk '69
Jon George Parro '81
Mr. Murray Pepper
Mr. & Mrs. Russell M. Pitzer
Mr. Nate Reese
Gwen Rodman
John R. Rodman
Mrs. Tomiko Schoell
Iris Levine Shuey, M.D. '68
Andrew Sivak
Werner Warmbrunn
Mary Ann Zeman '73

Special Projects

Pitzer is grateful to the following donors for gifts that were designated for special projects and activities at the College.

Tracy Adams '89
 Sally Arlen '89
 Ceth Ashen '89
 Carl F. Bandelin
 Mr. & Mrs. Anthony Barash
 Leslie Barnes '89
 Ms. Dana Baum
 Kenneth J. Benjamin '91
 Barbara B. Bergmann
 Susan Bernstein '89
 Alfred Bloom
 Lisa J. Bourgeault '83
 Sara Burr '89
 Nancy Rose Bushnell '69
 Sherry Bushnell '89
 Brook Claman '89
 Ms. Ann Craig
 Mr. & Mrs. Antonio Curiel
 Catherine T. Curtis '79
 Maria Theresa D'Alessandro '87
 Daniel Daley '89
 Carolyn Noelle DeWitt '88
 Eric Anthony Douglas '82
 Mr. & Mrs. Sheldon Dubow
 Catherine Elliott '89
 Frank L. Ellsworth
 Steven Fenton '92
 Joel Fields '85
 Mr. & Mrs. Eliot Finkel
 David Bruce Gerber '80
 Bryan Gibb '91
 Justine Girellini '89
 Mr. & Mrs. Thomas F. Glancey
 David Glickman '92
 Gloria & Peter S. Gold
 Donald & Lisa Goodman
 Jason Gottlieb '89
 Ms. Gogi Grant

Allen Greenberger
 Jerome L. & Elenore M. Guarino
 Elizabeth Gura '90
 Kent D. Harber '79
 James B. Harnagel '77
 Andrew Hauser '89
 Natalie Hausman '89
 Guy Hendricksen '89
 Carl Hertel
 Imperial School Faculty
 Linda Indaburu '89
 Winston Inoway '89
 Joy Jarman '91
 Kendall Jones '89
 Mary Karnowsky '89
 Kristin Kasper '91
 Laura Kerman '89
 Dr. & Mrs. Kirk Koehler
 Stacey Kyman '89
 Mr. & Mrs. Perry Jay LaPotin
 Karin Marie Labby '87
 Mr. & Mrs. Wilfred Leet
 Vickie Kaye Lester '76
 Carol Levitt
 Holly & Haynes Lindley
 Jack Tak-Fok Ling
 Michael Luciani '89
 Ms. Suzanne Macht
 Mr. John Maguire
 Cheryl Mahony, M.D. '73
 Mary Amanda Mecke '73
 Ms. Marilyn Micheau
 Mr. & Mrs. Bernard Mintz
 Mark Morrison '89
 Ms. Sophia Moxcey
 Brian Muncaster '89
 Peter Nardi
 Elinor & Frank Nathan
 Michael Navarro '89
 Caroline Nersessian '89
 Karen Nilsen '89
 Susan Obrow '76
 Ms. Janis Olander

Ms. Marie E. Pagnotta
 Mr. & Mrs. John C. Parish
 Mr. & Mrs. Biagio Pennino
 Lee C. Perry '75
 Mr. & Mrs. Doe Piliaria
 Elizabeth A. Poe '72
 Maryanne Quinnan '89
 Kathleen Reilly '89
 James Reynolds '89
 Ellin J. Ringler-Henderson
 Courtney Roth '89
 Marni Rozet '89
 Ellen Schnier '89
 Mr. & Mrs. Leo Schorsch
 Mr. & Mrs. Theodore P. Seney, Sr.
 Richard Mark Shapero '79
 Paramount Shaw '89
 Tareef Shawa
 Evelyn Shea '89
 Dayle Slutsky
 Jennifer Smaltz '89
 Lynne Spear
 Vivian & Joseph Steinberg
 Julie Stern '78
 David Straus '90
 Jack & Barbara Straus
 Jacqueline Levering Sullivan
 Denise & Richard Tanguay
 Lynn Tegen '89
 Maria Domike Thibeault '78
 Mr. & Mrs. Robert D. Timmins
 Mr. & Mrs. La Mar M. Toombs
 Mr. & Mrs. Cornelis Van Drop
 Ms. Heather Watkins
 Jill Weiser '89
 Myra & David Weiss
 Mr. & Mrs. John Wreck
 Janet Caffardo Yoss '70
 Mary Ann Zeman '73
 Suzanne Silverman Zetterberg '68
 Mr. Steve Zulloff

Gifts for Scholarship Funds

During the 1988-89 academic year, half of the student body at Pitzer College received some form of financial support through the College. Many donors help provide this assistance by making annual gifts designated for student financial aid. Other donors establish endowed scholarship funds which will continue in perpetuity to help support deserving students. The following scholarship funds assisted students during the last fiscal year.

The Ahmanson Foundation
 Endowed Scholarship Fund
 The Ahmanson Foundation
 Scholarship Fund
 John W. Atherton Endowed
 Scholarship Fund-Class of 1970

Avery International Independent
 Colleges Scholarship Fund
 The Dorothy Durfee Avery
 Endowed Scholarship Fund
 Avon Independent Colleges
 Scholarship Fund
 Carl Robert Bandelin Scholarship
 Roxanne Belding Scholarship Fund
 Robert J. Bernard Scholarship Fund
 Mary Ann Callan Endowed
 Scholarship
 Edna S. Castera Scholarship Fund
 Chase Buff Company Scholarship
 Fund
 Chevron Merit Award
 Class of 1974 Endowed Scholarship
 Fund
 Class of 1974 Ten Year Anniversary
 Scholarship Fund
 Class of 1975 Ten Year Anniversary
 Scholarship Fund

Class of 1976 Endowed Scholarship
 Fund
 Class of 1984 Scholarship Fund
 Susan Crawford Memorial-Class of
 1968
 Martha Louise Criley Memorial
 Scholarship Fund
 Elsie De Wolfe Foundation
 Scholarship Fund
 Joseph Drown Foundation
 Scholarship
 Clayton S. Ellsworth Endowed
 Scholarship Fund
 GTE California Independent
 Colleges Scholarship Fund
 Jean & Ernest Hahn Scholarship
 Fund
 Jill Ford Harmon Scholarship Fund
 Jill Ford Harmon Endowed
 Scholarship-Class of 1966

Gifts for Scholarship Funds (continued)

Haynes Foundation Scholarship Fund	George Henry Mayr Foundation Scholarship Fund	The Harry W. and Virginia Robinson Scholarship Fund
William Randolph Hearst Endowed Scholarship	MCA Foundation Endowed Scholarship Fund	William R. Rogers Memorial Scholarship-Class of 1969
The Herold Family Endowed Scholarship Fund	Ada Belle McCleery Scholarship Fund	David Kenneth Schoell '82 Memorial Award
Sylvia Sticha Holden Endowed Scholarship Fund	Giles W. and Elsie G. Mead Foundation Endowed Scholarship Fund	S. Bernard Schwartz Scholarship Fund
Hollywood Canteen Foundation Scholarship Fund	Diane Mosbacher Endowed Scholarship Fund	Annis Van Nuys Schweppe Endowed Scholarship Fund
Horton Publishing Company Endowed Scholarship Fund	Nathan Endowed Scholarship Fund	Diane Shammas Student Scholarship Fund
Beverle Houston Memorial Award	National Science Psychology Prize	The Southern California Edison Pitzer College Minority Scholarship
Laud Humphreys Memorial Scholarship	Maud Barker Neff Scholarship Fund	John Stauffer Memorial Academic Scholarship
IOLAB Independent Colleges Scholarship	Pacific Telesis Scholarship Award	Harry and Grace Steele Foundation Scholarship Fund
The Fletcher Jones Foundation Scholarship Fund	Ralph M. Parsons Memorial Independent Colleges Scholarship Fund	George B. Stone Memorial Scholarship
Katherine Cone Keck Endowed Scholarship Fund	Flora Sanborn Pitzer Endowed Scholarship Fund	Stuart Foundations Scholarship
W. M. Keck Foundation Endowed Scholarship Fund	Harold B. Pomeroy Endowed Scholarship Fund	Tenneco Inc. Independent Colleges Scholarship Fund
Jeanne LaCroix New Resources Scholarship	Primus Inter Pares Fund-Class of 1967	UNOCAL Foundation
Katie Lawson '73 Memorial Award	Esther Stewart Richards Endowed Scholarship Fund	Independent Colleges Scholarship
Shirley Mae Marino Memorial Scholarship	The Mabel Wilson Richards Scholarship Fund	Mr. & Mrs. Leslie A. Warren Endowed Scholarship

Memorial Contributions

Memorial gifts serve as a means of honoring the memory of alumni, faculty and friends of the College. Funds received as memorials may be used in a variety of ways, from supporting scholarships, to furnishing the special needs of a department, to providing income for facilities. Gifts in memory of the following alumni, faculty and friends of Pitzer were made during the last fiscal year.

Robert Barcon
Florence Mead Benjamin
Ed Bernath

Joan Zeifert Charney '67
William Webb Clary
Douglas Dalglish '84
Ben Dennison
Mr. & Mrs. Andrew Duggan
Martha Dashew Dumont
J. Robert Fluor
J. Simon Fluor
Eugene S. Frankel
Dorothy Hall
Glenn Hastings
Beverle Houston
Laud Humphreys
Paul Elkins Jacobsen
Rosa W. Moreland Keaton
Jessie Irene Klasson
Katie Lawson '73

Mark Lothrop
Bert Meyers
W. Newell Nelson, Jr.
Elizabeth W. Nelson
Matthew Lloyd Van Orman
Wendell E. Plaisted
June Reed '68
Alberta V. Reed
Homer L. Russell
David Ken Schoell '82
Henry Siegmann
Paul Sivak
Paul Slimck
Ralph A. Tanguay
Elliot Toombs '87
Rachelle Esther Warden

Gifts Honoring Others

Contributions were made in honor of the following individuals during the 1988-89 fiscal year.

Carl Robert Bandelin
Maurice & Kay Carmona
Frances Jane Corcoran
Joyce Cory '87
Florence B. Curtis
Samuel Dolphin
Benjamin Riedel Fingeret
Adam Benjamin Friedman
Jo Ann Copperud Gils '73
Jessica Goman
Nicholas Goman
Timothy Goman

Robyn Hamilton
Mr. & Mrs. Edward Hasson
Nancy Nelson Hill '69
Gary D. Holmes
Agnes Moreland Jackson
Ivan & Deborah Kallick '78
Bruce Karatz
Eugenia Lauterbach
Lawrence Little '76
Margaret Mathies
Samuel Kallick McGowan
Zachary Kenneth Mirman
Frank Nathan
Kathryn Belle Perry
George Piness, Jr.
Alberta V. Reed

Esther Stewart Richards
David Julius Roston
Richard Shapero
H. W. Sheridan
Mitchel & Marilyn Sklar
Alec Braedon Small
Rebecca Sokol Smith, M.D. '70
Fred Sontag
Lynne Spear
Joseph LeVow Steinberg
Alan T. Sugiki
Rick Tsujimoto
Lisa Turner '87
Jay Wallace
Zachary Ward

Pitzer College Board of Trustees

Officers, 1989-90

Peter S. Gold,
Chairman
Anthony H. Barash,
Vice Chairman
Bruce Karatz, *Vice Chairman*
Edith L. Piness, *Vice Chairman*

Chadwick F. Smith,
Vice Chairman
John N. Tierney, *Vice Chairman*
Frank L. Ellsworth, *President*
Vicke F. Selk, *Secretary/Treasurer*
Charles W. Martin, Jr.,
Associate Treasurer

Jan K. Brown, *Controller*
Charles M. Crawford,
Assistant Treasurer
Dennis Bishop, *Assistant Treasurer*
Vera Holland, *Assistant Controller*

Members 1989-90

Hirschel B. Abelson
President
Stralem & Company Inc.

Rosamond R. Arthur

Constance A. Austin

Anthony H. Barash
Attorney
Barash & Hill

Rebeca E. Barron '75

Jill Minderhout Baskin '77
Client Services Executive
Leo Burnett, USA

Laurie Melcher Benjamin '76
Monterey County Health
Department

Robert E. Bowdoin
President
Bob Bowdoin & Associates

Nancy Rose Bushnell '69

Robert J. De Monte
Regional Administrator
Regional Housing Commissioner
Department of Housing and
Urban Development
San Francisco

Frank L. Ellsworth
President
Pitzer College

Peter S. Gold
Chairman of the Board
Price Pfister, Inc.

Patricia G. Hecker

Laynard L. Holloman, MD
Physician

Phyllis T. Horton
President
Horton Publishing Co.

Maria D. Hummer
Attorney
Manatt, Phelps,
Rothenberg & Phillips

William C. Janss, Jr.
President
Janss Corporation &
City Centercorp.

Deborah Bach Kallick '78

Bruce Karatz
President and
Chief Executive Officer
Kaufman & Broad Home
Corporation

Donald B. Kaufman
President
The Boston Store

Karen C. Larson
Director
K. C. Larson Galleries

Margot B. Levin

David W. Mills
Mills and Lynn Enterprise

Judith Avery Newkirk

Frederick M. Nicholas
President
The Hapsmith Company

Arnold Palmer
Senior Vice President
Sutro & Co.

Murray Pepper
President
Home Silk Shop, Inc.

Edith L. Piness
Historian

Russell M. Pitzer
Chairman
Department of Chemistry
Ohio State University

Earl A. Powell, III
Director
Los Angeles County Museum
of Art

Sidney J. Sheinberg
President and
Chief Operating Officer
MCA Inc.

Sandra Segal Sigman '78
President
Pitzer College Alumni
Association
Director of Property Management
Los Angeles Land Co.

Chadwick F. Smith, MD
Physician

Deborah Deutsch Smith, Ed.D
'68
Chair, Department of Special
Education
The University of New Mexico

Rebecca Sokol Smith, MD '70
Physician
Associate Director
Harbor-UCLA Medical Center

John N. Tierney
President and CEO
The DOSCI Corporation

James E. Weir
Partner
Peat Marwick Main & Co.

Robert K. Wolfe
President
Cosine Corporation

Life Members, 1989-90

John W. Atherton
President Emeritus,
Pitzer College

Robert H. Atwell
President
American Council on Education
Former President,
Pitzer College

Eli Broad
Chairman of the Board and
Chief Executive Officer
Broad Inc.

Nicholas R. Doman
Attorney

Molly Mason Jones
Professor of Psychology
Emerita, Scripps College

Helen Juda

Raymond G. Marshall

Odell S. McConnell
Attorney

Elinor H. Nathan

Kenneth S. Pitzer
Professor,
Department of Chemistry
University of California at
Berkeley

Richard J. Riordan
Attorney
Riordan & McKinzie

George H. Whitney
Advisory Partner
Gibson, Dunn & Crutcher



