

# TAGA<sup>®</sup>

## HARMONY

To Achieve Glorious Acoustics



Home  
Entertainment  
Multimedia  
Electronics  
2016

# TAGA COMPANY

## WORLD-CLASS PRODUCTS

The European founders (from Poland and Germany) of the TAGA Harmony brand started their involvement in the audio business in the early years of 1990. They were recognized music lovers and specialists in high-end audio, who were looking for sonic excellence in speakers. They recognized that most speaker brands that boasted top sound performance offered their products at extremely high prices, but they did not really provide good sound quality. This prompted them to establish their own TAGA Harmony brand.

They defined main criteria for sound performance of TAGA Harmony speakers - to be accurate, with perfect localization, spacious soundstage and wide dispersion as well as deep, powerful bass and impressive dynamics. As most brands offered this kind of sound in very expensive products, TAGA Harmony founders decided to lower manufacturer's margin of profit, and focus on supplying speakers with absolutely the best performance/value ratio!

Nowadays TAGA Harmony brand is offering high quality products for the audio-video market.

Main types of products are: high-end, hi-fi and home theatre speakers, in-wall/in-ceiling and outdoor speakers, multimedia speakers, hi-fi electronics and accessories for speakers.

TAGA Harmony speakers still remain key products in our offer. Our speakers can boast the finest music and home theatre performance with wide dispersion and spaciousness, deep bass and impressive dynamics known from speakers designed in the U.S.A, adding sonic accuracy, precise location and ultra-low distortions distinctive for German designs.

Advanced materials, state of the art engineering and innovate design by an international team of professional designers position TAGA Harmony as one of the leaders in speakers industry.

Our range of speakers consists of several product lines designed and engineered for two-channel audio, home theatre systems, multimedia and commercial applications.

Thanks to unique technology, used to build our speakers and true passion of our designers TAGA Harmony is setting the standard for sonic excellence and the best value in speakers performance.

Our mission and philosophy is to create products with stunning accuracy and soundstage, a powerful and perfectly-defined bass, sensational dynamics with detailed, natural midrange, at a price range so affordable that it is almost unbelievable!

To achieve this goal our professional team of engineers and designers spend hundreds of hours on developing each and single product. During repeated listening tests and multiplied advanced measuring research carried by our R&D department, all potential weaknesses of the final product are adjusted and corrected to perfection. Combined with the large scale of production all these features make our products offer unbeatable value and sound performance!

## FACTORY

All TAGA Harmony products have been designed according to the requirement of ISO 9001:2008 and certified with the world's most important certificates.

The R&D department hires the most talented engineers and designers, who focus their efforts on developing the best performing, reliable and friendly to use products. Each project is fully tested by appropriate departments and approved for mass production after each and single detail is perfectly adjusted.

The production facility consists of advanced and modern assembly lines, with independent quality inspections checkpoints.

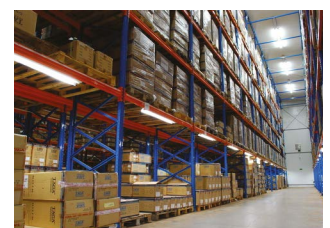
All our final products are always carefully inspected by advanced testing equipment and software and we have a defect rate less than 0.1% that is one of the best in the industry!



TAGA Harmony at the High-End Show, Munich



Proudly Engineered and Designed in the European Union!



The warehouse in Europe



REVIEWS ★★★★★

HTA-700B "HEIMKINO"

The 100 best products of the year



HTA-700B „Tablet PC“

SEHR GUT (HIGH CLASS)

Oberklasse  
Preis/Leistung  
sehr gut  
Tablet PC 4-2014 Note 1,2

HTA-700B "hifitest.de"

HIGH CLASS



They work along very well: The combination of the TAGA HTA-700B and the beautiful Peachtree Audio D5 sounds clearly and longs for more music. So it is good when the smartphone or tablet is filled up with music. For those who do not prefer to play via Bluetooth, fortunately Taga also offers possibility to play from PC via USB or from a conventional CD player via the RCA input.

HTA-700B „Hi-Fi Choice“

BEST BUY  
★★★★★



MINIATURIZATION AND DESIGN

This affordable hybrid amplifier charms us in terms of its construction, especially build and materials quality - there is not a gram of plastic here!

SOUND WITH A TOUCH OF FANTASY

The amplifier was performing very well in the configuration with the Italian monitors Chario Premium 1000 , especially that from my experience, I know these Italian monitors prefer much more efficient amplification. However in this configuration it came out that the number of watts generated by the hybrid amplifier turned out to be sufficient to fully drive the slim Italian monitors...

Tiny sounds, particularly those in the higher parts of the mids and in the high tones are nicely accented by the amplifier.

You could get the impression that it has no problems with the correct interpretation of dynamics contrast of sounds which are seemingly little different from each other. But this is a feature we met in more expensive and powerful amplifiers, so once again the HTA-700B deserves to be praised.

SUMMARY

It turns out that you do not need to spend big money on a well-equipped and good-sounding amplifier, designed for smaller spaces. The low-gain double triodes working in the preamp stage together with the transistor end stage are a harmonious duet and complement the sound with many elements typical for vacuum tube amps.

So you can hear the delicate warmth, musicality and a note of finesse note combined with remarkable precision in leading rhythm, especially at the micro level, as well as sustainable and spatial sound transmission.

Listening to music from CDs and files stored on a computer hard disk had an honest and mature message comparable even to little more expensive units.

Similarly, in the case of streaming music from a smartphone using wireless signal transmission technology - TAGA Harmony quickly and without any problems links to any smartphone , allowing the possibility to use a source other than a computer or a CD player, which greatly extends the HTA-700B functionality, for sure a lot of people will like this small amplifier.

HTA-700B, PLATINUM F-60 SL „HiFi Test“

HTA-700B  
SEHR GUT (HIGH CLASS)

HiFi Test  
Oberklasse  
Preis/Leistung  
sehr gut  
1,2

Platinum F-60 SL  
OUTSTANDING, PREISTIPP (HIGH CLASS)

HiFi Test  
Oberklasse  
Preis/Leistung  
Note  
hervorragend 1,2

Preistipp  
HiFi Test  
TV-HIFI

GLORIOUS SOUND

For so little money this is a super deal...

SOUND AND CONCLUSION

And here we go. After I had angled the speakers towards me, the way they like the best, I could quickly determine how fresh and warm the duet works together and how a notable bass fundament it can generate despite large cones' surface. The soundstage succeeded to my full satisfaction, so I can just say: heart, what do you desire more? The set is an absolutely must to have. Those looking for something good priced for themselves and their friends, something well made, with modern features built-in and ideal and free music straight from the gut, this is for you. Very big recommendation.

HTA-700B „AUDIO“

Everything is folded with precision, which does not raise any objections. The HTA-700B is heavy and makes a great impression as for such a little one.

PERFORMANCE

Gentle, warm, suggestive sound... Richness and analog naturalness could be able to compensate limitations in a dynamic range and resolution, but these features do not limp; However, it is obvious that TAGA avoids sharpness, it does not round every sound but rather shapes and smooths' but still leaving sound distinct and clear - there is a very good selectivity of this presentation, the sounds do not blend together, and the image tends to be three-dimensional, and although details are „combed“ you can feel them constantly. The whole impression is very friendly and the style works well in a „firefighting“ of compressed recordings that could be transferred to TAGA by the Bluetooth standard.

HTA-700B

„Stereo i Kolorowo - underground“

LISTENING

After connecting the speakers to the HTA-700B (and turning on the music) it can be seen at once that the amplifier has a very pleasant timbre - you can feel the smooth and warm tube atmosphere supported by a strong bass cushion coming from the power transistors.

It is surprising that despite the small declared amplifier power (2 x 33W) the amplifier can generate high volume levels without any noticeable fatigue or overload. The desktop monitors played strongly and clearly, giving the sound of convincing expression and high culture. What is important, the music message is consistent and harmonious - all frequencies are well aligned and do not overlap with each other...

When I connected a laptop to TAGA Harmony with a USB cable and used WIMP as a signal source, the message turned out to be transparent and free and well controlled. The sound can be described as smooth and condensed - with the high readability midrange which is slightly softened and the trebles are quite detailed and smooth. The way of creating the stereo panorama is pretty interesting - the scene is pleasantly wide and the sound is fairly and artistically drawn on it, although most actions take place on the first plan, because the depth is limited. However these characteristics do not interfere with the reception of music as the HTA-700B has a very nice presentation and sound character, which can be named as full and rich as well as juicy and vigorous, where musicality is preferred, and not all the nuances and subtleties. As the result, Taga Harmony provides an attractive and relaxing sound - ideal for long hour work with a computer at your desk...

The sound transfer (provided by the headphone amplifier) is smooth and attractive - with a lot of bass, but not over-exaggerated..

HTA-500B, PLATINUM S-90 SL

„av-magazin.de“

av magazin.de  
Taga HTA-500B  
sehr gut

av magazin.de  
Taga Platinum S-90 SL  
sehr gut

av magazin.de  
Preistipp  
Taga Platinum S-90 SL

SOUND PERFORMANCE

After letting the tubes warm up we are firstly playing music from a smartphone via wireless Bluetooth. TAGA

system shows a combination of good dynamics and resolution. The compact speakers play the voice of Alicia Keys with a pleasant expressive wideband sound. The system has also a rich bass and warm main tones in hop-hop and pop what brings men's voices with impressive clarity.

In an analogous CD audio playback the TAGA system goes a step higher in terms of sound quality. It continues offering a hi-fi combination of high quality presentation. Dynamics, spatial resolution and sound image are immaculate. The bass is wonderfully round and soft while the highs come with nice brilliance and sharp details. Thus the impressive voice of the soul diva Gladys Knights sounds especially widely and velvety.

TEST RESULT

TAGA offers the HTA-500B hybrid amplifier and Platinum S-90SL speakers as a modern ambience-friendly audio solution. Taking into account the fair price-performance ratio the system shows up great sound quality that makes you want to enjoy music again.

DA-300 „Hi-Fi Choice“

BEST BUY  
★★★★★



VIVIDLY AND CLEARLY

How can such an inexpensive DAC sound like? My answer is - not bad! With some musical genres - even exciting! This little black box has something that one can listen for hours... offers a dynamic and clear sound, not boring at the same time, without aggression...

TAGA Harmony has a bit of smoothness, which I like so much, so the device beyond the purely technical aspects of good sound, such as speed of response to changing rhythm, offers a bit of finesse, so the sound is smooth to listen to. This in turn makes many music genres, especially jazz and classical music, sound without excessive nervousness.

TO THE RESCUE

TAGA Harmony DA-300 turns out to be a panacea for the miserable sound quality from a computer sound card. By connecting this small converter to a laptop or a desktop computer via a USB cable (supplied with the device - solid and shielded), I became convinced of its beneficial effect on the sound... The DA-300 operated in an asynchronous mode ... so it is not susceptible to the contaminated noise clock signal generated by the computer USB port.

SUMMARY

The DA-300 achieves excellent sound value for the money ..

PLATINUM F-100 SE „HiFi Test“

SEHR GUT, PREISTIPP (TOP CLASS)

HiFi Test  
Spitzenklasse  
Preis/Leistung  
Note  
sehr gut 1,1

Preistipp  
HiFi Test  
TV-HIFI

SOUND PERFORMANCE

... Due to very good omnidirectional capabilities the speakers do not stick attention on themselves. After the obligatory break-in time the TAGA Platinum F-100 SE triumphs with a very dynamic and open music playback. The four woofers provide the profound rich and powerful bass encouraging the reviewer to tap his foot. The speaker also remain amazingly calm and convincing with their precise reproduction. Only the lowest octave is concealed by the Platinum F-100SE, here are some larger speakers with a lower tuning advantage. The midrange is concise and provides a lot of fine details so the music reproduction is very free and open. There are also convincing trebles around the speakers with a very good fine detailed and clean resolution. The speakers open a wide and deep soundstage with musicians and singers very precisely located on their planned positions.

CONCLUSION

Those looking for beautifully designed and high-quality finished loudspeakers at a very fair price should absolutely see and listen to the Platinum F-100SE. The dynamic speakers with a very lively sound in the listening room and offering everything your heart desires from the powerful bass to fine resolution trebles.



**PLATINUM F-100 SE**  
„Hi-Fi Choice”  
**BEST BUY**



**PERFORMANCE**

...sound was lightning-fast with a low, powerful, extended bass and spaciousness being created on a grand scale .. dynamic capabilities deserve a special attention... The F-100 SE impressed me especially with their sound transmission on a macro scale, precisely performing large volume strokes without prejudice to spatiality and without losing the rhythm ...

TAGA Harmony's sound style immediately reminded me of American designs, such as Klipsch and JBL... light 25mm titanium dome installed in the F-100 SE has exceptional dynamics on a micro scale unusual in this price range, similar to the horn drivers...

TAGA Harmony really enjoys the company of glowing vacuum tubes...

TAGA Harmony are open sound speakers firmly emphasizing the dynamic contrast and as such will sound excellent with all kinds of musical genres which are based mainly on spaciousness and the power of sound.

**Summary:**

The F-100 SE are speakers that provide neutral and accurate performance of a high caliber

**PLATINUM F-100 SE**  
„Stereo Magazine”



...Platinum F-100 SE looks very impressive and exclusive at the same time, presenting a level of finish seen in several times more expensive constructions...

**PERFORMANCE**

The first thing that caught my attention is that TAGA speakers are not sensitive to the connected electronics, which in this price range is not often found and here we get a very versatile sound, perfectly matching different amplifiers...

They perfectly “disappear” in a listening room, no matter what kind of music is currently playing.

The consistency and speed of the lowest frequency range make a big impression, carefully accenting an impact and sound of individual instruments... A scene of virtual sound sources is drawn in a very stable way, more towards the listener than into the inside... Male vocals were well balanced with a perfect finish.

**CONCLUSION**

The speakers surprise with versatility of playback capabilities in high volume levels. Midrange is very flat and perfectly fits the rest of frequency ranges.

**PLATINUM F-60 SE “AUDIO”**

TAGA speakers play with the middle band - powerfully and joyfully , but not overwhelming, its character is close to the Castle Stirling 3 reviewed last month, but TAGA play more freely , even more „forward”... The designer rocked it out, at its maximum, and succeeded- it pays back with cohesion, dynamics, presentation of all items from the first plan: guitar, vocals, drums ... TAGA play really very exceptionally and yet surprisingly.... speed, pleasant aggressiveness, emotionality.

**DESIGN**

With ambitions of a luxury product - a rosewood veneer finished and high gloss painted cabinet, interesting transducers in a 3-way design, some impressive additions.

**PERFORMANCE**

Frontal with a lifelike, hot middle, consistent, fast, vital. Low, but not overwhelming, attentive bass and shortened top of a band. Exclusive, very engaging creation.



**CORAL F-120/C-40/S-40/SW-10**  
“Prime AV”  
**BEST RECOMMENDED**



**CORAL F-120**  
„Hi-Fi Choice”  
**RECOMMENDATION**



„Coral” sound

The sound reproduced by the drivers' quartet of each of the speakers at once attracts our attention. They surprise with dynamics and energy from the first moments of listening...Taga Harmony speakers are simply bursting with energy, and their message is vibrant and colorful.

**CORAL F-120 „Stereo i Kolorowo - underground”**



**SUMMARY**

For their reasonable price the speakers offer perfect construction of cabinets, high quality, advanced components as well as highly esthetic design, including a beautiful „high gloss” piano lacquer. But the most important is that the speakers provide full and suggestive sound highly saturated with emotions and energy. The CORAL F-120 sound performance is very natural and uniform, proportional and tonally rich – simply outstandingly musical...

We have to sincerely and honestly admit that Taga Harmony CORAL F-120 is a speaker with an excellent price to sound quality and design ratio. Recommendation!

**RECOMMENDATION**

**CORAL F-80**  
„Hi-Fi Choice”  
**BEST BUY**



**PERFORMANCE**

I started by taking a closer look at cabinets and I have to admit that I was positively surprised. TAGA Harmony is on par in this matter with such top brands like Xavian or Castle, what can be considered as a very big achievement...

TAGA Harmony does not leave any illusions that its aim is to create speakers that simply give a lot of pleasure coming out of listening and it succeeded in 100%...

The speakers can be liked for their colorful transmission and emotional approach to music being played as for example listening to the new Depeche Mode disc brought me a lot of satisfaction - sound was full of rich tones, saturated and vivid. This allows to fully enjoy music... Immediately after listening to the first song I had an urge to listen to the next one and another one till with flushed cheeks I reached the end of the music.

These floorstanding speakers involve the listener thanks to deeply extended bass.. perfectly matched to high and mid frequencies.

**Summary:**

**Rich sound in terms of tones with low extended bass. Spaciousness, airy treble and midrange nicely matched with bass.**

**One of the best crafted TAGA Harmony speakers. They look and sound excellent offering spontaneous, colorful sound glittering with many tones.**

**PLATINUM F-120**  
„av-magazine.de”  
**SEHR GUT**  
**(HIGH CLASS)**



Taga Platinum v.2 F-120 is a loud-speaker that offers high visual and sonic value for the money. The special acoustic properties recommend this speaker for all home theater and hi-fi enthusiasts who are looking for a powerful universal solution. With its attractive price, the customer gets a good looking and strong sounding.

**PLATINUM F-100, C-100, S-100, SW-10**  
„HDFEVER”

...The sound performance of the speakers is very interesting, combining warmth and brightness in the top range of the frequencies. It is beautiful, round, fleshy, powerful, not unnecessarily too fast, but firm. They have surprisingly deep bass in relation to the size. Mid frequencies are accurate, balanced and articulated with excellent readability of instruments and voices. As for the treble, the tweeter is subdued, very accurate, can provide many details, but slightly directional what shows up especially in a large room...

**Very good price / Quality ratio**

**PLATINUM F-100**  
„AgdLab”  
**RECOMMENDATION**



...from the very first moment TAGA surprises with lightness and consistency of sound. It does not excessively favour any range of frequencies...

... (Platinum F-100) **has more features typical for substantial more expensive speakers**

**PLATINUM F-100**  
„Hi-Fi Choice”  
**BEST BUY**



...TAGA Harmony Platinum v.2 F-100 definitely stands out from the competition in sense of consistent, free and expressive sound performance, which allows enjoying all kind of music being listen... Designers for sure deserve words of recognition. The changes in the new model Platinum F-100 are not only cosmetic. There are much better and more expensive solutions used, which have direct impact on sound quality. Nevertheless TAGA has managed to keep very attractive ratio of quality to price... **These speakers look great and sound the same way in their price category!**

**PLATINUM F-80 „Stereo Magazine”**

.. I am surprised by the quality of design. Solid enclosures with high quality and stylish finish appeal positively to customers. There are two main construction advantages that are hard to find in competing products at this price point: first are curved enclosure walls – this solution significantly limits resonances, inner wave effect and increases stiffness of the whole construction, second is the location of tweeter above the top edge of the enclosure - that reduces waves reflections from the front of the speaker...

The F-80 are very enjoyable, non-intrusive speakers with a versatile sound performance, they do not favor any type of music. They can play small jazz compositions with the same passion, power and clarity as mighty organ music and in a few moments they can take us to a stadium during live rock concert.

**Until recently, I wouldn't expect to find speakers which, in this price, could undoubtedly be recommended to everyone.**

**PLATINUM B-40 „Hi-Fi Choice”**

**LIKE:** The sound comparable to small floor-standing speakers in terms of dynamics and impressiveness. The bass performance is flawless in this price range. The speakers are smooth in whole range with a free midrange and neatly composed high frequencies.

**WE SAY:** **A dynamic potential, depth of bass, precision and neutrality the B-40 possess, are worthy of more expensive constructions.**

**PLATINUM B-40 „Stereo Magazine”**

... the B-40 surprises with the quality of design: solid enclosures with high quality finish appeal positively to customers. There are two main construction advantages that are hard to find in competing products at this price point: first are curved enclosure walls – this solution significantly limits resonances. The second is the location of tweeter above the top edge of the enclosure - that reduces waves reflections from the front of the speaker...



...Stereophony, with well-marked plans, can be enjoyable. The speakers have no problem with „disappearing” in the room, what is not common in this price range...

At this price it is difficult to find some? competition

## PLATINUM B-40 „AUDIO”

### PERFORMANCE

Not only a little bigger enclosures, but most of all the larger mid-woofer has ensured the speaker's visible advantage over competitors in terms of, remarkably, not only the bass but mostly dynamics and airy, large sound; surely the bass has its participation in this, but is not coming out to the first plan, does not give „strength” by strong impacts or impressive rumbles, simply the bass is in the proper and needed quantity. It even seems that the center of frequency range responsible for presenting huge amounts of information sounds more powerful and pugnacious, sometimes ruthless, but always reliable. The high frequencies do not stand out but are well-connected, they finish sounds, irradiate and give details - without exaggerating nor neglecting any details - everything is well arranged. Without assurance, without mannerism, without emphasis, without complexes and without creating charming climates - direct, dynamic sound with high competence.

### CONCLUSION

Dynamic, coherent, distinct, with strong first plan. The scale of sound that is considerably higher than competitors'.

## PLATINUM SLIM F-90 SL/C-90 SL/S-90 SL /SW-10 „hifitest.de”



### SOUND

The elegantly designed Platinum Slim speakers' series offers brisk and lively sound the draws the audience immediately into it. The massive and dynamic subwoofer provides a stable bass foundation to build balanced mids and lively highs on it. The SLIM speakers play together homogeneously and amaze with their control when performing at high volumes...

### CONCLUSION

The TAGA Platinum SLIM multi-channel system provides evidence that for the relatively small money one can get very good sound quality and the best workmanship. The system is recommended for those who want to transform their living room into a great sounding home theater not sacrificing and appealing and modern look.

## PLATINUM F-90 SL, C-90 SL, S-90 SL, SW-10 „HEIMKINO” OUTSTANDING (HIGH CLASS)



## PLATINUM F-90SL „Hi-Fi Choice” BEST BUY ★★★★★



The F-90 SLIM speakers sound in the way as if all the time wanting to prove to the listener that they are the star of dynamic recordings...

I have found they have a big heart to play at high pace. Both a midrange driver as well as a tweeter dome has shown a big engagement in performed sounds. However, the most important is that the tested speakers ensure proper fulfillment of the midrange frequencies, resulting in a nice and smooth transition between the bass and treble...

### SUMMARY

The Taga Harmony speakers are energetic and bright sounding, which will appeal to people who prefer direct communication and sometimes musical prominence especially in the treble band...

These slim boxes with a modern design will fit into many contemporary styled rooms but also captivate with suprisingly solid bass and brisk sound.

Modern design, great looks, powerful sound.  
They sound excellently in dynamic music material.

## PLATINUM F-90 SL „Stereo i kolorowo - underground”



### RECOMMENDATION

The speakers provide healthy, dynamic and emotional sound with perfect proportions, large-scale and freedom, and the most important - natural and honest. The timbre is enjoyable, slightly warm in its mid-section and bright at the top. The very good stereo panorama allows creating of a large, real sound scene...

## PLATINUM F-60 SL „HEIMKINO” The 100 best products of the year



## PLATINUM F-60 SL „HiFi Test” OUTSTANDING, PREISTIPP (HIGH CLASS)



## Platinum ONE „Stereo i kolorowo - underground”



### RECOMMENDATION

### LISTENING

Although the Platinum ONE speakers have small dimensions, they can play with the big, even expansive sound with a „claw” - fast, energetic and open. There is certainly no lack of dynamism and spontaneity in these speakers, each recording is presented in such a way like they would like to show themselves as being bigger than they actually are - they shoot with sound like howitzers firing missiles.

However, although the sound is juicy and massive, it is not sharp or rough - it tends more to maintain the correct balance and harmony than exaggerate in this range.

In other words, the sound of the Platinum One is strong and expansive, but not over exaggerated...

In addition, the ONE monitors give a big breath to the music, disputes momentum and good shine, allowing you to enjoy the authentic atmosphere of the concert, although it is a smaller scale than provided by large floor-standing speakers. Importantly, there is a large amount of air in the recordings; you can feel the sound is dense, but also free and not unnecessarily concentrated. The sound scene is correct, fairly broad, fairly deep, with a good localization of instruments and reliable vocals... High tones are powerful and expressive, but not always delicate and refined, but without unpleasant „hisses” to the ears.

## TAV-606 SE „HEIMKINO” EXCELLENT (ENTRY CLASS) PRICE / PERFORMANCE: OUTSTANDING



## TAV-606F SE „Hi-Fi Choice” BEST BUY ★★★★★



The TAGA Harmony speakers did a perfect job with that material, even adding a little sweetness and warmth to the sound. We can hear that the speakers were tuned in terms of timbre, saturation and rather musicality than analyticity, dynamics, bass contour and its diversity. The result is the very pleasant sound inviting to listening to the music for a long time. The speakers do not make the listener tired and, what is important, almost every disc sounds very nice despite its level of realization...

Thanks to the factory tuning we get the excellent speakers which sound and look better than the base model, and all these in only a little higher price.

## TAV-606 + TSW-90 „Audio-Video” BEST PRODUCTS OF THE YEAR AWARD



This system combines well balanced sound performance with full, well defined bass, which can fill up pretty large listening room. Front speakers can perfectly work in stereo system as well...

## inTONE 2.1 „av-magazin.de”



## SEHR GUT (HIGH CLASS) SOUND PERFORMANCE

During the listening test the TAGA system proves its sonic prowess from the first minute. The compact speakers sound harmoniously, clearly and detailed. Although the tonal balance is not very linear, the small boxes convince us with a pleasant broadband and authentic sound. So the sound of the pop, rock and classical music is always thrilling and agile. In the low frequency of the subwoofer the sound is supported effectively and with powerful and deep basis and doesn't lose its quality even at a subtle monitoring sound level nor not loses its plasticity.

### TEST RESULT

...The sound quality is consistently tidy, self-confident with the clear treble and deep bass. Thus the 'AV magazine' recommends this speaker set for all users of mobile devices, looking for a shapely, practical and strong sounding hi-fi solution.

## inTONE 2.1 „Hi-Fi Choice”

Value for money  
★★★★★

Attractive, affordable music system both in terms of appearance and sound!

### PERFORMANCE

...as for such an inexpensive device, TAGA Harmony surprises with its sound scale, especially when it comes to bass performance. The bass has a little cinema-like sound style which is deep, widespread and surprisingly well-controlled. The bass is particularly showing its power when the Loudness is on, but even then its dynamics and response remain at a good level - I was able to listen to Patricia Barber's accompanying bass as well as drums and bass guitar in psychedelic songs of the No Man group without any problems. The flat bassreflex port works perfectly, because there are no turbulences and noises audible even at high volumes...

The satellite speakers easily disappear in the room, leaving the listener alone with the music - they sound smoothly and without aggression. The range of treble can effortlessly immerse into the music and show out a lot of details in individual recordings, and the slightly warm midrange makes the vocals being sophisticated typical for more advanced stereo systems. It is particularly worth to mention the sound spaciousness reproduced by the inTONE 2.1, it is by far one of the biggest advantages of the system.

Considering the appearance, build quality, sound and actually a bargain price, TAGA Harmony product has a great chance to become a market hit.

## TAV-500B „Hi-Fi Choice” Value for money ★★★★★

### PUNCTUALLY AND EXTENSIVELY

The sound of TAGA Harmony active-monitors is quick and pretty dynamic, but most of the listening fun comes from stereophony which is created with great verve. Noteworthy are the depth of the scene and the precise location of the virtual sources. The 165mm woofers can generate deep, low extended bass.

The TAV-500B are suitable for small and medium-sized rooms - they are able to fill a smaller room to the brim with their sound, but also during the test in a 20 square meters room it turned out that those small speakers were not losing their powerful vigor.

### SUMMARY

I recommend this affordable active stereo speaker system for those enthusiasts of energetic sound who wish to use it in small and medium-sized rooms...

They are attractively priced, functional, and at the same space-saving active speakers, which can provide a lot of pleasure to their owner.

The Diamonds are a Music Lover's Best Friend !

# Diamond Series

TAGA Harmony appointed a team of dedicated engineers for designing loudspeakers with extremely high-end look and top sound - the project with a code name „Diamond”.

Their goal was to use all the knowledge and experience in research, development and manufacturing of speakers to build an exceptional floorstanding speaker showcasing the best technology and achievements of TAGA Harmony.

The result is visible at the first glance on the beautifully crafted cabinet with its curved, clear, elegant lines and luxurious design accentuated with high grade African wood veneer painted with high-end clear gloss piano lacquer.

When you turn on the speakers you are immediately stunned by the exceptional Diamond F-200 sound - super natural, super dynamic, super clear and engaging... just super! **Taste it, Immerse in it, Love it!**

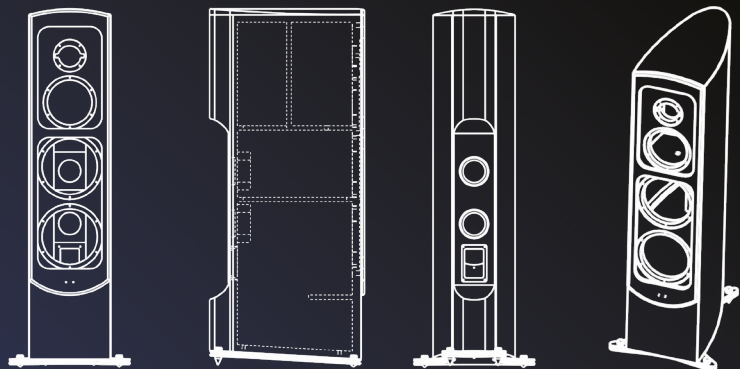


Speaker cabinet design and construction is one of the most critical elements influencing sound performance.

Based on our TLIE technology we have developed a new high-end solution to even more increase stiffness and limit any unwanted resonances of the cabinet. The new technology is called **S-TLIE** Super Taga Low Interference Enclosures.

Super rigid and thick **25mm MDF boards** were used for side, rear, top and bottom walls and **30mm for the baffle** (front panel). The internal structure was divided in two chambers in an approximate ratio 80% of volume for woofers and 20% for a midrange and tweeter. It allows much better and independent tuning of the low and mid-high sections.

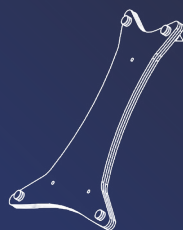
To keep elegant and sleek appearance of the front panel there are no grill sockets thanks to a magnetically mounted grill.



Internal bracing is used to further strengthen the whole structure and achieve even greater rigidity.

The walls are firmly anchored to the **80mm backbone** beam highly strengthening the whole construction.

The bent shape of the side walls as well as the curved top plays a significant role in lowering unwanted vibrations, diffraction, turbulences and standing waves effect.



The 2-layer design of the metal base increases isolation from the floor, the transparency of sound and provides better definition and the basis for the bass.

The whole cabinet is tilted back slightly to time-align all the drivers – it brings the tweeter's output into the best and correct alignment.

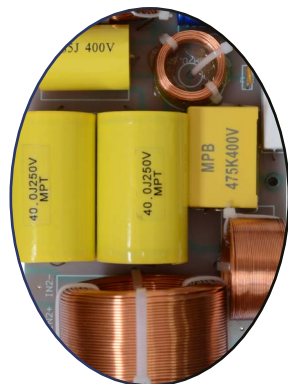


# Diamond



## Why is our DIAMOND probably the best in the World?

- **CARAT** - more than 110 kg weight of a pair. Very rigid, resonance-free cabinets!
- **COLOR** - exceptional, glittering African real wood veneers. Simply charming!
- **CLARITY** - perfectly pure, transparent and natural sound!
- **CUT** - splendidly shaped enclosures with ideal proportions.
- **POLISH** - super glossy piano lacquer, jewelry at your home!



The high-end 30mm **O-TPTTD** (Oversized Taga Pure Titanium Tweeter Dome) with 2 magnets ( $\Phi 80$  /  $\Phi 70$ ) is 20% bigger than in our Platinum Special Edition series to allow even higher power handling and more accurate, clear, smooth and detailed performance. It has exceptional precision and works with ultra-extended high-frequency response up to 33 kHz (+/- 3dB). The **E-TPAF** faceplate helps even further dispersion of high-frequencies.



The **E-TPACD** (Extended Taga Pure Aluminum cone Driver) midrange (aluminum chassis, oversized 2-magnet structure  $\Phi 100/\Phi 90$ ) moves very fast and frequently allowing mid-range frequencies to be very rich, spacious and sweet. The extended low and high frequency range (46 Hz - 18 kHz) helps overlapping with frequencies of the woofers and the tweeter to offer the best sound consistency.



The **TNPPCD** (Taga Non-pressed Paper Cone Driver) woofer is equipped with 3 oversized  $2 \times \Phi 123$  +  $\Phi 100$  magnets and aluminum chassis. It is extremely rigid and utilizes vibration-free solutions. The heavy duty 4-layer pure copper ribbon voice coil allows high power handling. It offers deep, precise and detailed bass performance.



## Diamond F-200

Speaker Type	Floorstanding
Drivers Configuration	Tweeter 30mm (1.18"), O-TPTTD, E-TPAF
	Midrange 165mm (6.5"), E-TPACD
	Bass 2 x 203mm (8"), TNPPCD
Recommended Amplifier Power	100 - 400W
Sensitivity	91dB
Crossover Points	450 Hz 4 kHz
Impedance	6 Ohm
Frequency Response	30 Hz - 33 kHz (+/- 3dB)
Dimensions (H x W x D)	120 x 28 x 52 cm
Net Weight	112 kg / pair
Finishes	Rosewood Veneer – With Clear Gloss Piano Lacquer
	African Walnut Veneer – With Clear Gloss Piano Lacquer

The height excluding spikes and including a base.  
The weight including a base.





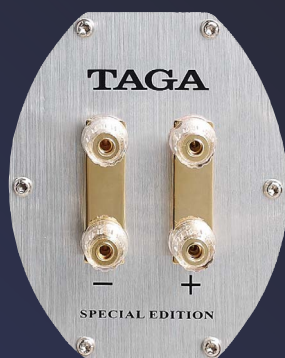
Super Performance Beyond Expectations

# Platinum SE Series



The award-winning and highly acclaimed Platinum v.2 series is the progenitor of our flagship Special Edition SE series. But the similarities between the SE series and the Platinum series are only the shapes of the enclosures. The High class finishes, all components and technology are totally new or deeply revised.

The Platinum SE showcases all the qualities of dedication and love of music, groundbreaking developments in speaker design and technology which have inspired TAGA designers and engineers.



The TLIE (Taga Low Interference Enclosure) enclosures in a beautiful natural rosewood wood veneer with a choice of clear gloss or clear matt piano lacquer finishes, or in high class real piano (deep black and snowy white) are extremely rigid. The floor-standing models sit on a new high-end, beautiful plinth. The bassreflex ports and TTP (Taga Top Plate) are rubber coated for more luxurious look and to provide even better effect on sound performance. The high-end binding posts, top class crossovers and dedicated internal wiring are used for more natural sound.

## Platinum F-100 SE v.2

**The handcrafted TLIE enclosure** is now even more rigid and neutral to vibrations and colorization – thanks to increased MDF walls thickness from 15mm to 18mm.

**New configuration of the drivers:** the tweeter is positioned closer to the midrange than in the previous version to provide even better smoothness between high and mid frequencies. The woofers were moved a little up in order to change bass definition and its dispersion.

**The dramatically upgraded crossover** to meet new refinements and configuration of the drivers: more delicate and rich treble, better defined midranges and more dynamic bass.

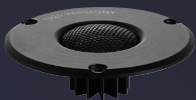
**Supplied extra aluminum spike supports** provide extra stability for the speakers and protect the floor from being scratched.







The revised 2nd generation TPTTD-I (Taga Pure Titanium Tweeter Dome) now uses neodymium magnet for a higher efficiency and more precise and extended high-frequency response. The totally new TPAF (Taga Pure Aluminium Faceplate) helps further dispersion of high -frequencies.



The upgraded TPACD-I (Taga Pure Aluminum Cone Driver) utilizes bigger magnet structure to support more realistic soundfield. Center speaker has a 3-way design with new 3" TPACD driver.



The TWCD (Taga Woolen Cone Driver) delivers extremely deep, articulate bass with superior timing and pitch.



## Platinum F-100 SE v.2

The 3rd generation TPTTD-II tweeter utilizes a differently shaped and lighter titanium cone – it allows faster, more accurate movement of the dome reflecting in more detailed and airy sound.

The 3rd generation TPACD-II midrange - new adjustments and refinements along with revised double-magnet structure provide even higher power handling and more rich, spacious and sweet mids.

The 2nd generation TWCD-I woofer with different composition of cone materials - the cone is lighter so can move faster generating better defined, more dynamic and faster bass performance. And the redesigned voice coil utilizing thicker and purer flat wire offers even higher power handling and longer operation time without increased temperature.



# Platinum SE



F-100 SE v.2



F-60 SE



B-40 SE



S-40 SE



C-40PR SE

	<b>Platinum F-100 SE v.2</b>	<b>Platinum F-60 SE</b>	<b>Platinum B-40 SE</b>	<b>Platinum C-40PR SE</b>	<b>Platinum S-40 SE</b>
Speaker Type	Floorstanding	Floorstanding	Bookshelf	Center	Surround / Bookshelf
Drivers Configuration	Tweeter 25mm (1"), TPTTD-II, TPAF, TTP Midrange 133mm (5.25"), TPACD-II Bass 2 x 165mm (6.5"), TWCD-I	Tweeter 25mm (1"), TPTTD-I, TPAF, TTP Midrange 133mm (5.25"), TPACD-I Bass 165mm (6.5"), TWCD	Tweeter 25mm (1"), TPTTD-I, TPAF, TTP Bass / Midrange 165mm (6.5"), TWCD	Tweeter 25mm (1"), TPTTD-I, TPAF, TTP Midrange 78mm (3"), TPACD-I Bass 2 x 133mm (5.25"), TWCD	Tweeter 25mm (1"), TPTTD-I, TPAF, TTP Bass / Midrange 133mm (5.25"), TWCD
Recommended Amplifier Power	20 - 280W	20 - 240W	20 - 160W	20 - 180W	20 - 140W
Sensitivity	92dB	90dB	90dB	89dB	88dB
Crossover Points	700 Hz 2.5 kHz	250 Hz 4 kHz	2.5 kHz	800 Hz 4 kHz	4.5 kHz
Impedance	4 Ohm	4 Ohm	4 Ohm	4 Ohm	4 Ohm
Frequency Response	28 Hz - 40 kHz	33 Hz - 40 kHz	36 Hz - 40 kHz	36 Hz - 40 kHz	40 Hz - 40 kHz
Dimensions (H x W x D)	108.9 x 25 x 34 cm	96.6 x 25 x 34 cm	41 x 25 x 27.2 cm	21 x 60 x 19 cm	35 x 23 x 24.2 cm
Net Weight	53.3 kg / pair	41.6 kg / pair	16 kg / pair	8.3 kg / pc	13.2 kg / pair
Finishes	Rosewood Veneer - With Clear Matt Piano Lacquer Piano White Lacquer		Rosewood Veneer - With Clear Gloss Piano Lacquer Piano Black Lacquer		

Floorstanding models: The height excluding spikes and including a base. The weight including a base.



Amazing Sound

# Coral Series



Colors explode across coral reef, what inspired our designers and engineers to create the CORAL speaker series. Like reef our speakers explode with thousands of tones, and take you for an enjoyable and luxurious journey to the land of audiophile music.



The THAW (Taga High Amplitude Woofer) offers extended cone excursion, which results in increased speed and range. The bass is fast, strong, low and dynamic.

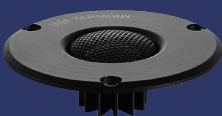
The THCA (Taga High Current Amplifier) offers huge amounts of raw power, and oversized, high-performance heatsink quickly dissipates generated heat, increasing efficiency and range of amplifier.

The beautifully crafted enclosures in luxurious wood veneer or elegant high gloss finishes, groundbreaking technology and advanced developments.

The 2nd generation TPTTD-I (Taga Pure Titanium Tweeter Dome) and TPAF (Taga Pure Aluminum Faceplate) same as used in our flagship Platinum SE series.

The new high-end 6.5" TPACD (Taga Pure Aluminum Cone Driver) reproduces very natural and detailed sound of vocals and instruments.

The new TRSCD (Taga Reinforced Straw Cone Driver) is ultra-light and rigid at the same time. It delivers the quantity of extremely deep, accurate bass as well as presents superior neutrality and resolution of mid frequencies.





	<b>CORAL F-120</b>	<b>CORAL F-80</b>	<b>CORAL C-40</b>	<b>CORAL S-40</b>	<b>CORAL SW-10</b>
Speaker Type	Floorstanding	Floorstanding	Center	Surround / Bookshelf	Active Subwoofer
Drivers Configuration	Tweeter 25mm (1"), TPTTD-I, TPAF  Midrange 165mm (6.5"), TPACD  Bass 165mm (6.5"), TRSCD Rear Bass 165mm (6.5"), TRSCD	Tweeter 25mm (1"), TPTTD-I, TPAF  Midrange 165mm (6.5"), TPACD  Bass 165mm (6.5"), TRSCD	Tweeter 25mm (1"), TPTTD-I, TPAF  Bass / Midrange 2 x 133mm (5.25"), TRSCD	Tweeter 25mm (1"), TPTTD-I, TPAF  Bass / Midrange 133mm (5.25"), TRSCD	Bass 255mm (10"), THAW
Recommended Amplifier Power	20 - 220W	20 - 200W	20 - 140W	20 - 140W	Built-in amplifier, 200W RMS 700W Dynamic Peak, THCA
Sensitivity	90dB	90dB	88dB	88dB	
Crossover Points	250 Hz 1.8 kHz 2 kHz	600 Hz 3 kHz	3 kHz	2.5 kHz	
Impedance	6 Ohm	6 Ohm	6 Ohm	6 Ohm	
Frequency Response	28 Hz - 40 kHz	32 Hz - 40 kHz	44 Hz - 40 kHz	44 Hz - 40 kHz	20 Hz - 200 Hz
Dimensions (H x W x D)	97.5 x 19.5 x 36 cm	92.5 x 19.5 x 29 cm	16.5 x 50 x 21 cm	30 x 16.5 x 23 cm	43 x 35 x 41 cm (incl. feet)
Net Weight	46 kg / pair	39.4 kg / pair	7.2 kg / pc	11.3 kg / pair	23.6 kg / pc
Finishes	Walnut Wood Veneer - With Clear Matt Lacquer High Gloss White High Gloss Black				

Floorstanding models: The height excluding spikes and including a base. The weight including a base.



New Level of Mastery!

# Platinum V.2 Series

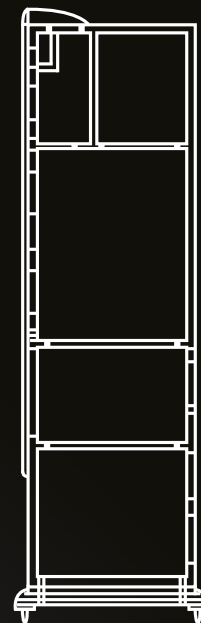
There were no compromises during the design and manufacturing process of the previous Platinum series, but in the newest v.2 version our engineers and designers show a whole new level of mastery.



The TLIE - Taga Low Interference Enclosures are made of high-quality thick MDF boards with inside braces to increase stiffness and limit any unwanted resonances.

The shapes are perfectly crafted to lower any unwanted vibrations, diffractions or turbulences which can affect the sound performance.

Three floorstanding models fit variously sized rooms and meet different audiophiles' demands. They are placed on solid bases with spikes, which ensure stability as well as isolate the speaker from the floor.



The completely new TPTTD Pure Titanium Dome tweeter has been tuned to reach remarkable 40kHz top frequency and the new TWG TAGA Waveguide design allows to widen the dispersion of highs around the room.

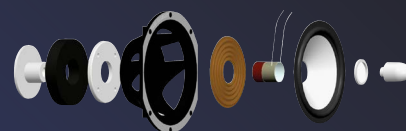
The TTP Top Plate (selected models only) with highly placed tweeter reduces standing waves effect and creates three-dimensional performance.

The result is a spacious, crystal clear and rich sound performance even at highest volumes.



The TPACD Pure Aluminum Cone midrange and bass drivers have been tuned and upgraded.

Now mids are more natural, live and rich, and bass is much better defined and deeper.



# Platinum V.2



F-120



F-100



F-60



SW-10 v.2

	<b>Platinum F-120</b>	<b>Platinum F-100</b>	<b>Platinum F-60</b>	<b>Platinum SW-10 v.2</b>
Speaker Type	Floorstanding	Floorstanding	Floorstanding	Active Subwoofer
Drivers Configuration	Tweeter 25mm (1"), TPTTD, TWG, TTP Midrange 133mm (5.25"), TPACD Bass 3 x 165mm (6.5"), 2 x TPACD, 1 x TPAPR	Tweeter 25mm (1"), TPTTD, TWG, TTP Midrange 133mm (5.25"), TPACD Bass 2 x 165mm (6.5"), TPACD	Tweeter 25mm (1"), TPTTD, TWG, TTP Midrange 133mm (5.25"), TPACD Bass 165mm (6.5"), TPACD	Bass 255mm (10"), THAW, TSAC
Recommended Amplifier Power	20 - 280W	20 - 250W	20 - 230W	Built-in amplifier, 175W RMS 550W Dynamic Peak, THCA
Sensitivity	93dB	92dB	90dB	
Crossover Points	700 Hz 4 kHz	700 Hz 4 kHz	700 Hz 4 kHz	
Impedance	6 Ohm	6 Ohm	6 Ohm	
Frequency Response	28 Hz - 40 kHz	30 Hz - 40 kHz	35 Hz - 40 kHz	20 Hz - 200 Hz
Dimensions (H x W x D)	117 x 25 x 34 cm	108.9 x 25 x 34 cm	96.6 x 25 x 34 cm	43 x 35 x 41 cm (incl. feet)
Net Weight	49.2 kg / pair	40.2 kg / pair	36.4 kg / pair	26.5 kg / pc
Finishes		Black High Gloss White	Wenge High Gloss Black	

Floorstanding models: The height excluding spikes and including a base. The weight including a base.  
\*Weights for PVC finish versions.



# Platinum V.2



B-40



C-100



C-40PR



S-100



S-40

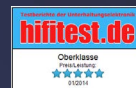
Platinum B-40	Platinum C-100	Platinum C-40PR	Platinum S-100	Platinum S-40
Bookshelf	Center	Center	Surround	Surround / Bookshelf
Tweeter 25mm (1"), TPTTD, TWG, TTP	Tweeter 25mm (1"), TPTTD, TWG	Tweeter 25mm (1"), TPTTD, TWG, TTP	Tweeter 2 x 25mm (1"), TPTTD, TWG	Tweeter 25mm (1"), TPTTD, TWG, TTP
Bass / Midrange 165mm (6.5"), TPACD	Bass / Midrange 4 x 133mm (5.25"), TPACD	Bass / Midrange 2 x 133mm (5.25"), TPACD	Bass / Midrange 2 x 133mm (5.25"), TPACD	Bass / Midrange 133mm (5.25"), TPACD
20 - 150W	20 - 200W	20 - 130W	20 - 180W	20 - 130W
89dB	90dB	88dB	88dB	87dB
2.5 kHz	4.5 kHz	3.5 kHz	4.5 kHz	4.5 kHz
6 Ohm	6 Ohm	6 Ohm	6 Ohm	6 Ohm
38 Hz - 40 kHz	38 Hz - 40 kHz	39 Hz - 40 kHz	38 Hz - 40 kHz	42 Hz - 40 kHz
41 x 25 x 27.2 cm	17 x 89 x 10 cm	21 x 60 x 19 cm	28 x 27.7 x 17.2 cm	35 x 23 x 24.2 cm
15.5 kg / pair	8 kg / pc	6.7 kg / pc	10 kg / pair	11 kg / pair
		Black	Wenge	Walnut
		High Gloss White	High Gloss Black	Matt Black

Honey, I shrunk the Platinum!

# Platinum SLIM Series



BEST BUY



RECOMMENDATION





You love the excellent sound of our award-winning and highly acclaimed Platinum series but your spouse would be furious seeing big boxes in your living room. Here comes the solution!  
The solution means no substitutions or compromises were used but just like in an old good movie: the Platinum series has just been shrunk to more compact, appealing SLIM version.



Surely we had to tune crossovers as well as add a passive radiator to the floorstanding Platinum F-90 SL model to ensure the same tonal character which the Platinum series is famous of.



It sounds delightful

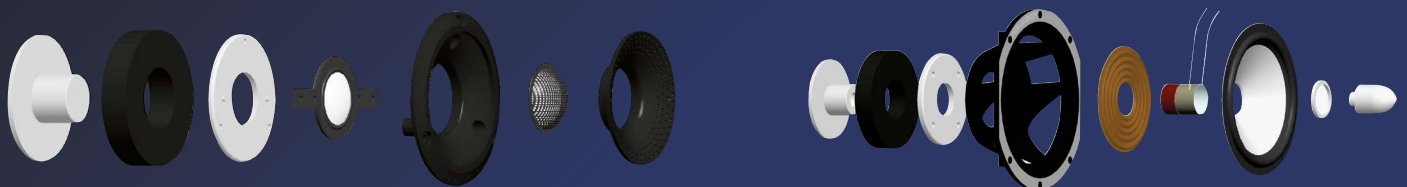
Whether you enjoy your favorite music or movie the Platinum SLIM series always delivers the high-end sound with striking clarity and spaciousness as well as dynamic low bass at any volume.

The same, high-end technology used in the Platinum has been implemented in the Platinum SLIM series:

The TPTTD Pure Titanium Dome tweeter reaching remarkable 40KHz top frequency with TWG TAGA Waveguide design allowing to farther widen the dispersion of highs around the room.

The TTP Top Plate (selected models) with highly placed tweeter reduces standing waves effect and creates three-dimensional performance.

The TPACD Pure Aluminum Cone midrange and bass drivers with tuned performance to meet requirements of new cabinets.



# Platinum SLIM



F-90 SL



F-60 SL



LCR-60 SL

	F-90 SL	F-60 SL	LCR-60 SL
Speaker Type	Floorstanding	Floorstanding	Left / Center / Right
Drivers Configuration	Tweeter 25mm (1"), TPTTD, TWG, TTP  Midrange 133mm (5.25"), TPACD  Bass 3 x 133mm (5.25"), 2 x TPACD, 1 x TPAPR	Tweeter 25mm (1"), TPTTD, TWG, TTP  Bass / Midrange 4 x 102mm (4"), TPACD	Tweeter 25mm (1"), TPTTD, TWG, TTP  Bass / Midrange 4 x 102mm (4"), TPACD
Recommended Amplifier Power	20 - 240W	20 - 150W	20 - 150W
Sensitivity	91dB	90dB	89dB
Crossover Points	700 Hz 3.7 kHz	450 Hz 2.5 kHz	450 Hz 2.5 kHz
Impedance	6 Ohm	6 Ohm	6 Ohm
Frequency Response	31 Hz - 40 kHz	35 Hz - 40 kHz	39 Hz - 40 kHz
Dimensions (H x W x D)	103.5 x 17 x 24.5 cm	98.5 x 15.5 x 23.7 cm	13.5 x 76 x 11 cm
Net Weight	32.6 kg / pair	26.4 kg / pair	8.5 kg / pc
Finishes		Black High Gloss White	Wenge High Gloss Black
			Walnut Matt Black

Floorstanding models: The height excluding spikes and including a base. The weight including a base.  
\*Weights for PVC finish versions.



# Platinum SLIM

# Platinum One

## Small in Size – Big in Heart!



The Platinum ONE - our designers and engineers paid special attention to this project – the difficult goal was to design this small Beauty giving it very powerful and jaw-dropping sound performance. It took more than 6 months of hard work and repeated tests and adjustments after the final and satisfactory result has been achieved.

So here it goes: we are proudly presenting the Platinum ONE: Small in Size – Big in Heart!

This premium speaker is a great choice for shelf or stand mounting for demanding stereo and home theaters systems.

The Platinum ONE beautiful and rounded little vented cabinet is made of very dense MDF material to ensure exceptional rigidity and limit distortion and vibrations.

The award-winning and highly acclaimed TPTTD Pure Titanium Dome tweeter utilizing TWG TAGA Waveguide and TTP Top Plate was upgraded for even more spacious, crystal clear and rich highs and to achieve higher volumes.



The upgraded 4" mid woofer with TPAIC Taga Pure Aluminum Injection-molded Chassis utilizing oversized double magnet structure, TAVS Taga Air Ventilation System and a long-throw paper cone with pure aluminum dust cap ensures deeper bass and wonderfully open and rich midrange.



S-90 SL



C-90 SL

	<b>Platinum SLIM ONE</b>	<b>Platinum SLIM S-90 SL</b>	<b>Platinum SLIM C-90 SL</b>
Speaker Type	Bookshelf	Surround	Center
Drivers Configuration	Tweeter 25mm (1"), TPTTD, TWG, TTP Bass / Midrange 102mm (4"), TPAIC, TAVS	Tweeter 25mm (1"), TPTTD, TWG, TTP Bass / Midrange 133mm (5.25"), TPACD	Tweeter 25mm (1"), TPTTD, TWG, TTP Bass / Midrange 2 x 133mm (5.25"), TPACD
Recommended Amplifier Power	20 - 100W	20 - 120W	20 - 120W
Sensitivity	86dB	87dB	88dB
Crossover Points	3 kHz	4.3 kHz	3.5 kHz
Impedance	6 Ohm	6 Ohm	6 Ohm
Frequency Response	42 Hz - 40 kHz	44 Hz - 40 kHz	42 Hz - 40 kHz
Dimensions (H x W x D)	23 x 14.5 x 21.4 cm	26 x 17 x 15 cm	15 x 52 x 18 cm
Net Weight	8.1 kg / pair	6.6 kg / pair	5.9 kg / pc
Finishes	Black High Gloss White	Wenge High Gloss Black	Walnut Matt Black

\*Weights for PVC finish versions.

The taste of Côte d'Azur - redefined!

# Azure v.2 Series

You are of course familiar with the French Riviera, which stretches over a hundred kilometers of coastline where the beautiful colored Mediterranean Sea closes in around amazing cliffs, sandy beaches and exquisite resorts.

We named our speakers series "AZURE" to emphasize their sound character, which is like sea's breeze powerful and gentle at the same time, and gives the joy of listening like watching azure color of the Mediterranean Sea.

And the design of the new AZURE v.2 series is elegant, awesome and stylish, so there is no doubt that our speakers can shine like stars in the backdrop of famous and luxurious resorts of the French Riviera.

---

**TLIE (Taga Low Interference Enclosure)** – new elegant enclosures are now even more rigid and neutral to vibrations and colorization. We have increased MDF walls thickness from 12mm to 15mm in a floorstanding speaker (plus 18mm thick front panel) and from 9mm to 12mm in Center and Surround speakers (plus 15mm front panel);

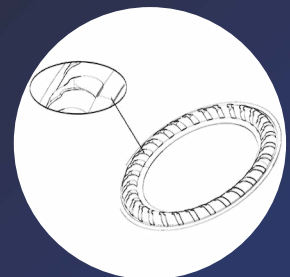
**New configuration of the drivers:** tweeters are positioned closer to the midrange to provide even better smoothness and integration between high and mid frequencies. The woofers in the floorstanding model were moved a little up in order to change bass definition and its dispersion.

**The dramatically upgraded crossovers** to meet new refinements and configuration of the drivers: more delicate and rich treble, better defined midrange and more dynamic bass.

---

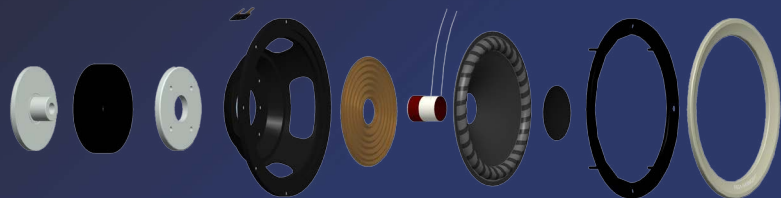
The new AZURE v.2 series is dedicated for very demanding hi-fi and home-theatre enthusiasts, who look for the best sound performance as well as love to enjoy sound without missing any single tune of melody!

---



The totally new high-performance mid and woofer drivers incorporating **TDSC Taga Dynamic Surround Control**, which provides stable cone movement, dynamics and precision and increased system sensitivity.

**New decorative pure aluminum trim rings** to enhance sound dispersion.



---

**The 2nd generation TPTTD-I** (Taga Pure Titanium Tweeter Dome) utilizes a differently shaped and lighter titanium cone as well as a double-magnet structure – it has a higher SPL, faster and more accurate movement of the dome reflecting in more detailed and airy sound.

The **TPAF** (Taga Pure Aluminum Faceplate) helps further dispersion of high-frequencies.

Dome metal grill assists with equal and flat dispersion of sound in and off the axis of the driver.



# Azure v.2



AZURE F-100 v.2



AZURE C-40 v.2



AZURE S-40 v.2

## AZURE F-100 v.2

## AZURE C-40 v.2

## AZURE S-40 v.2

	AZURE F-100 v.2	AZURE C-40 v.2	AZURE S-40 v.2
Speaker Type	Floorstanding	Center	Surround
Drivers Configuration	Tweeter 25mm (1"), TPTTD-I, TPAF Midrange 165mm (6.5"), Polypropylene, TDSC Bass 2 x 165mm (6.5"), Polypropylene, TDSC	Tweeter 25mm (1"), TPTTD-I, TPAF Bass / Midrange 2 x 133mm (5.25"), Polypropylene, TDSC	Tweeter 25mm (1"), TPTTD-I, TPAF Bass / Midrange 133mm (5.25"), Polypropylene, TDSC
Recommended Amplifier Power	40 - 200W	20 - 120W	20 - 120W
Sensitivity	89dB	88dB	87dB
Crossover Points	345 Hz 5.1 kHz	3.2 kHz	3.2 kHz
Impedance	6 Ohm	6 Ohm	6 Ohm
Frequency Response	36 Hz - 40 kHz	42 Hz - 40 kHz	46 Hz - 40 kHz
Dimensions (H x W x D)	100.5 x 21 x 27 cm	17 x 50 x 20.9 cm	27 x 17 x 22.9 cm
Net Weight	41.6 kg / pair	5.9 kg / pc	8.3 kg / pair
Finishes		Black      Wenge      Walnut	

Floorstanding models: The height and weight - excluding spikes / feet and including a base.

Magic Colors of Sound!

# Blue Series



F-80

The BLUE series with its modern round tailored and slim MDF cabinets looks impressive and noble.

By moving the bass driver to the side of the cabinet in floorstanding models, we have achieved slimmer design and were able to use bigger woofer to deliver more powerful and dynamic low frequencies.

All tweeters in this series utilize high quality pure titanium dome tweeter, which can produce crystal clear, detailed and spacious highs up to 40kHz with extended sound dispersion thanks to the TAGA Waveguide design.

We can assure you that our sound and design quality are ranked number one both in stereo and home theatre systems and we charge much less than other manufacturers!

10" reinforced paper cone woofer with oversized 120 magnet, paper dust cap and heavy duty combo T-yoke, voice coil and coil former with high purity wiring, is responsible for high power handling as well as deep, precise and detailed bass.

Whether you look for speakers for your hi-fi system or multichannel applications, the BLUE series is a great choice.



C-40



S-40



	BLUE F-80	BLUE C-40	BLUE S-40
Speaker Type	Floorstanding	Center	Surround
Drivers Configuration	Tweeter 25mm (1"), TPTTD	Tweeter 25mm (1"), TPTTD	Tweeter 25mm (1"), TPTTD
	Midrange 133mm (5.25")	Bass / Midrange 2 x 102mm (4")	Bass / Midrange 102mm (4")
	Bass 2 x 133mm (5.25")		
	Side Bass 255mm (10")		
Recommended Amplifier Power	20 - 200W	20 - 80W	20 - 80W
Sensitivity	90dB	88dB	87dB
Crossover Points	1.1 kHz; 2.9 kHz; 350 Hz	3 kHz	2.2 kHz
Impedance	6 Ohm	6 Ohm	6 Ohm
Frequency Response	33 Hz - 40 kHz	48 Hz - 40 kHz	50 Hz - 40 kHz
Dimensions (H x W x D)	114.5 x 22 x 35.3 cm	14.3 x 40 x 16.8 cm	24 x 15 x 16.8 cm
Net Weight	50.8 kg / pair	3.9 kg / pc	4.6 kg / pair
Finishes		Black      Wenge	Walnut

Floorstanding models: The height excluding spikes and including a base. The weight including a base.



Wind of Change!

# Audio-Video Series



Although AUDIO-VIDEO Series can be named "a bargain of the century", there is no place for any sacrifices in music or home theatre performance.

Our devoted to music team of professional engineers and designers has put all its knowledge and heart into building the AUDIO-VIDEO Series: still very affordable but at the same time reliable, with perfect quality, design and sound performance never before found in products of this price range.

The advanced, high class tweeters with the specialized horn-like, TWG TAGA Waveguide design of tweeter faceplate utilizing concave diffusers supports equal and flat dispersion of sound in and off the axis of the driver.



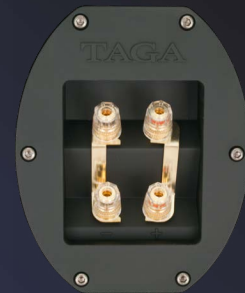
The midrange drivers utilizing rigid and ultra-light cones with the elastic rubber suspension can move very fast and frequently allowing mid-range frequencies to be very rich, spacious and sweet.



The woofers utilizing heavy duty voice coils, coil former and cones for increased power handling, can play deep, precise and detailed bass.



The BOM Bassreflex Omnidirectional Module - low-turbulence and high-velocity ports utilizing concave diffusers for increased dispersion of low frequencies.



The high quality, gold-plated banana binding posts.



# Audio-Video Special Edition



TAV-606F SE



TAV-606C SE



TAV-606S SE



	TAV-606F SE	TAV-606C SE	TAV-606S SE
Speaker Type	Floorstanding	Center	Surround
Drivers Configuration	Tweeter 25mm (1"), TWG  Midrange 133mm (5.25")  Bass 2 x 165mm (6.5")	Tweeter 25mm (1"), TWG  Bass / Midrange 2 x 102mm (4")	Tweeter 25mm (1"), TWG  Bass / Midrange 102mm (4")
Recommended Amplifier Power	20 - 150W	20 - 100W	20 - 100W
Sensitivity	91dB	88dB	88dB
Crossover Points	650 Hz 4.5 kHz	4.5 kHz	4.5 kHz
Impedance	6 Ohm	6 Ohm	6 Ohm
Frequency Response	36 Hz - 25 kHz	52 Hz - 25 kHz	52 Hz - 25 kHz
Dimensions (H x W x D)	98 x 23 x 25 cm	16.5 x 43 x 14.5 cm	26.5 x 16.5 x 14.5 cm
Net Weight	30.2 kg / pair	3.5 kg / pc	4.5 kg / pair
Finishes	Black	Wenge Walnut	White

Floorstanding models: The height excluding spikes.





TAV-906F



TAV-906S



TAV-906C



TAV-806F



TAV-806S



TAV-806C

	<b>TAV-906F</b>	<b>TAV-906C/S</b>	<b>TAV-806F</b>	<b>TAV-806C/S</b>
Speaker Type	Floorstanding	Center / Surround	Floorstanding	Center / Surround
Drivers Configuration	Tweeter 85 x 60mm, TRT, TPAF Midrange 133mm (5.25") Bass 2 x 133mm (5.25")	Tweeter 85 x 60mm, TRT, TPAF Bass / Midrange 2 x 102mm (4") (C) 102mm (4") (S)	Tweeter 25mm (1"), TWG Midrange 133mm (5.25") Bass 2 x 203mm (8")	Tweeter 25mm (1"), TWG Bass / Midrange 2 x 133mm (5.25") (C) 133mm (5.25") (S)
Recommended Amplifier Power	20 - 165W	20 - 100W	20 - 180W	20 - 100W (C) / 20 - 120W (S)
Sensitivity	89dB	88dB	89dB	88dB (C) / 87dB (S)
Crossover Points	500 Hz 3.8 kHz	3.5 kHz	600 Hz 4 kHz	5.6 kHz (C) / 5 kHz (S)
Impedance	6 Ohm	6 Ohm	6 Ohm	6 Ohm
Frequency Response	40 Hz - 28 kHz	52 Hz - 28 kHz	30 Hz - 25 kHz	53 Hz - 25 kHz
Dimensions (H x W x D)	97.5 x 17 x 26.5 cm	14 x 40 x 16 cm (C) 24.5 x 14 x 14.5 cm (S)	108 x 24.5 x 31.2 cm	18 x 50 x 18 cm (C) 30 x 18 x 18 cm (S)
Net Weight	32.5 kg / pair	4 kg / pc (C) 4.8 kg / pair (S)	36.8 kg / pair	5.1 kg / pc (C) 6.3 kg / pair (S)
Finishes		Black	Wenge      Walnut	

Floorstanding models: The height excluding spikes.



TAV-606F v.3



TAV-606C/S v.3



TAV-506F v.2



TAV-506C/S v.2

	TAV-606F v.3		TAV-606C/S v.3		TAV-506F v.2		TAV-506C/S v.2	
Speaker Type	Floorstanding		Center / Surround		Floorstanding		Center / Surround	
Drivers Configuration	Tweeter 25mm (1"), TWG		Tweeter 25mm (1"), TWG		Tweeter 25mm (1"), TWG		Tweeter 25mm (1"), TWG	
	Midrange 133mm (5.25")		Bass / Midrange 2 x 102mm (4") (C) 102mm (4") (S)		Midrange 133mm (5.25")		Bass / Midrange 2 x 102mm (4") (C) 102mm (4") (S)	
	Bass 2 x 165mm (6.5")				Bass 2 x 133mm (5.25")			
Recommended Amplifier Power	20 - 120W		20 - 100W		20 - 120W		20 - 100W	
Sensitivity	90dB		88dB (C) / 86dB (S)		89dB		88dB (C) / 86dB (S)	
Crossover Points	500 Hz 3.8 kHz		4.5 kHz		700 Hz 3.8 kHz		4.5 kHz	
Impedance	6 Ohm		6 Ohm		6 Ohm		6 Ohm	
Frequency Response	40 Hz - 25 kHz		55 Hz - 25 kHz		42 Hz - 25 kHz		55 Hz - 25 kHz	
Dimensions (H x W x D)	98 x 23 x 25 cm		16.5 x 43 x 14.5 cm (C) 26.5 x 16.5 x 14.5 cm (S)		90 x 17 x 23.5 cm		14 x 40 x 14.5 cm (C) 24.5 x 14 x 14.5 cm (S)	
Net Weight	27 kg / pair		3.5 kg / pc (C) 4.5 kg / pair (S)		20.4 kg / pair		2.8 kg / pc (C) 3.5 kg / pair (S)	
Finishes	Black	Wenge	Walnut	White	Black	Wenge	Walnut	White Matt PVC

Floorstanding models: The height excluding spikes.



# Audio-Video



TAV-506F v.2



TAV-406F v.2



TAV-406C/S v.2

	<b>TAV-406F v.2</b>	<b>TAV-406C/S v.2</b>
Speaker Type	Floorstanding	Center / Surround
Drivers Configuration	Tweeter 25mm (1"), TWG Midrange 133mm (5.25") Bass 2 x 165mm (6.5")	Tweeter 25mm (1"), TWG Bass / Midrange 2 x 102mm (4") (C) 102mm (4") (S)
Recommended Amplifier Power	20 - 120W	20 - 100W
Sensitivity	89dB	88dB (C) / 86dB (S)
Crossover Points	500 Hz 3.8 kHz	4.5 kHz
Impedance	6 Ohm	6 Ohm
Frequency Response	44 Hz - 25 kHz	58 Hz - 25 kHz
Dimensions (H x W x D)	88 x 20 x 23 cm	15 x 38 x 16 cm (C) 25 x 15 x 16 cm (S)
Net Weight	20 kg / pair	3.4 kg / pc (C) 4.6 kg / pair (S)
Finishes	Black	Wenge Walnut

Floorstanding models: The height excluding spikes.

# Audio-Video Active Subwoofers

TSW Series subwoofers are a single driver, bassreflex constructions with built-in high-current amplifiers. They deliver the most powerful, deep bass with staggering definition, location and dynamics never met at these price levels before. Our high-power and high-current amplifiers deliver astonishingly deep, thundering bass with perfect definition. Advanced subwoofer drivers with the extended cone excursion ensure superior flat power response and ultra-low distortions at any volume levels.

Our TSW subwoofer is an ideal complement to your sound system both in stereo and home theatre systems.



Our ultra-light and ultra-rigid paper cone bass drivers (with light paper dust caps, ferrum injection-molded chassis and oversized magnets) offer high power handling as well as deep, precise and detailed bass performance. The rubber, elastic surround allows for the extended cone excursion.

Our subwoofers use high-power and high-current amplifiers as well as high-power transformers and massive heatsinks to ensure full power and dynamics delivery at any time and any volume levels.



	<b>VIGOR SW-8</b>	<b>TSW-90 v.3</b>	<b>TSW-120 v.2</b>	<b>TSW-200</b>
Speaker Type	Active Subwoofer	Active Subwoofer	Active Subwoofer	Active Subwoofer
Bass Driver	203mm (8")	255mm (10")	255mm (10")	305mm (12")
Built-in amplifier	90W RMS 250W Dynamic Peak	90W RMS 250W Dynamic Peak	120W RMS 350W Dynamic Peak	200W RMS 600W Dynamic Peak
Cut-Off Frequency	35 - 150 Hz variable	35 - 150 Hz variable	35 - 150 Hz variable	35 - 150 Hz variable
Frequency Response	34 Hz - 150 Hz	30 Hz - 150 Hz	28 Hz - 150 Hz	25 Hz - 150 Hz
Dimensions (H x W x D)	31.5 x 28 x 33 cm (incl. feet)	40 x 33 x 40.5 cm (incl. feet)	40 x 33 x 40.5 cm (incl. feet)	41 x 37 x 42.5 cm (incl. feet)
Net Weight	10 kg / pc	15 kg / pc	16.4 kg / pc	21.2 kg / pc
Finishes		Black High Gloss White	Wenge High Gloss Black	Walnut White Matt Black



To fit any room and bring you plenty of joy!

# inMOVE Series

Our Home Theatre 5.1 packs combine compact sized satellites and a center speaker with a choice of high-power active subwoofers. They are dedicated to those fans of high-end sound who wish their systems physically “disappear” in a room. Thanks to compact dimensions our systems allow easy placement and hiding speakers around a room. Surely the sound will not be hidden – **your neighbors and you would be able to hear and feel it!**



inMOVE 5.0  
Bass/Midrange driver



The TAGA mid-woofer with TPAIC Taga Pure Aluminium Injection-molded chassis. The TAGA TAVS Air Ventilation System helps dispersing internal heat to provide even higher long-term power handling.

	inMOVE 5.0	inMOVE 5.0	inMOVE 8
Speaker Type	Satellite	Center	Active Subwoofer
Drivers Configuration	Tweeter 25mm (1"), TWG Bass / Midrange 76mm (3"), TPAIC, TAVS	Tweeter 25mm (1"), TWG Bass / Midrange 2 x 76mm (3"), TPAIC, TAVS	Bass 203mm (8"), THAW
Recommended Amplifier Power	20 - 80W	20 - 80W	Built-in amplifier, 90W RMS 250W Dynamic Peak, THCA
Sensitivity	85dB	85dB	
Impedance	6 Ohm	6 Ohm	
Frequency Response	65 Hz - 20 kHz	65 Hz - 20 kHz	30 Hz - 150 Hz
Dimensions (H x W x D)	20 x 11.6 x 16.9 cm	12 x 30.5 x 15 cm	26 x 24.5 x 28.2 cm (incl. feet)
Net Weight		9.7 kg / set	8 kg / pc
Finishes		High Gloss White High Gloss Black Matt Black	

Simply click or tap to change your music to the High Fidelity Sound experience!

## Multimedia Series

If you are already sick with buzzing toys pretending to be “audio” speakers your search has finally ended. Our Multimedia series offers real hi-fi and audiophile solutions to get the best sound performance from your computer, smartphone or other portable and stationary sources.

The most important components of our speakers are high-power, high fidelity built-in HPCDA class D amplifiers ; sophisticated and advanced audiophile grade drivers are developed by our engineering team the same which created TAGA Harmony high-end loudspeakers.

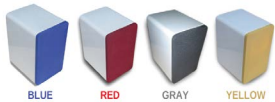
The result is your music, video and games come alive with a spacious, natural, crystal clear and rich sound with fast, dynamic and deeply extended bass.



## inTONE 2.1



Speaker Type	Active 2.1ch subwoofer with satellites
Drivers Configuration	Satellite: Tweeter 25mm (1") TWG Bass/Midrange 102mm (4") Subwoofer: Bass 203mm (8")
Built-in Amplifier Power	Satellites channels: 2 x 25W RMS / 90W Dynamic Peak Subwoofer channel: 60W RMS / 200W Dynamic Peak HPCDA Class D
Frequency Response	Satellites: 110Hz - 20kHz Subwoofer: 38Hz - 150Hz
Connectivity Wired	3.5mm stereo jack, RCA stereo, USB (MP-3 and charging up to 700mA), SD/MMC card (MP-3)
Connectivity Wireless	<b>Bluetooth® v3.0</b>
Remote Control / Display	Remote control, LED display
Power Requirements & Consumption	AC 220 - 230V / 50Hz; 150W
Dimensions (H x W x D)	22.5 x 13.5 x 16 cm (Sat.) 24.5 x 24.5 x 27 cm (Sub.)
Net Weight	Satellites: 4.4 kg/pair Subwoofer: 6.8 kg/pc
Finishes	High Gloss White, High Gloss Black Black Grills included



Depending on your mood, change the color of your inTONE 2.1 grills! The choice of 4 appealing colors of grills offered in optional packages!

## inTONE 2.1 mini



Speaker Type	Active 2.1ch subwoofer with satellites
Drivers Configuration	Satellite: Tweeter 25mm (1") TWG Bass/Midrange 76mm (3") Subwoofer: Bass 165mm (6.5")
Built-in Amplifier Power	Satellites channels: 2 x 18W RMS / 65W Dynamic Peak Subwoofer channel: 2 x 25W RMS / 2 x 90W Dynamic Peak (dual voice coil bass driver) HPCDA Class D
Frequency Response	Satellites: 120Hz - 20kHz Subwoofer: 45Hz - 150Hz
Connectivity Wired	3.5mm stereo jack, RCA stereo, USB (MP-3 and charging up to 700mA), SD/MMC card (MP-3)
Connectivity Wireless	<b>Bluetooth® v4.0, aptX®</b>
Remote Control / Display	Remote control, LED display
Power Requirements & Consumption	AC 220 - 230V / 50Hz; 150W
Dimensions (H x W x D)	19 x 11.5 x 14 cm (Sat.) 24.8 x 17 x 29.6 cm (Sub.)
Net Weight	Satellites: 2.6 kg/pair Subwoofer: 4.8 kg/pc
Finishes	Black, Wenge, Walnut







# Multimedia Series



## iMPACT 2.0

Speaker Type	Tabletop/Bookshelf Active Speaker
Drivers Configuration	Tweeter 25mm (1") TWG Bass/Midrange 76mm (3"), TPAIC, TAVS
Built-in Amplifier Power	2 x 18W RMS / 65W Dynamic Peak, HPCDA Class D
Frequency Response	60 Hz - 20 kHz
Connectivity Wired	Digital-Coaxial, 3.5mm stereo jack, RCA stereo, SD/MMC card, USB (MP-3 and charging up to 700mA)
Connectivity Wireless	<b>Bluetooth® v4.0, aptX®</b>
Remote Control / Display	LED display
Power Requirements & Consumption	AC 220 – 230V / 50Hz; 100W
Dimensions (H x W x D)	20 x 11.6 x 16 cm
Net Weight	3.8 kg / pair
Finishes	High Gloss Black Matt White Matt Black



Black Grills included



Depending on your mood, change the color of your iMPACT 2.0 grills!  
The choice of 4 appealing colors of magnet grills offered in optional packages!

## TAV-500B



Speaker Type	H-Fi Tabletop/Bookshelf Active Speaker
Drivers Configuration	Tweeter 25mm (1") TWG Bass/Midrange 165mm (6.5")
Built-in Amplifier Power	2 x 25W RMS / 90W Dynamic Peak, HPCDA Class D
Frequency Response	52 Hz - 20 kHz
Connectivity Wired	3.5mm stereo jack, RCA stereo, USB (MP-3 charging up to 700mA), SD/MMC card reader (MP-3)
Connectivity Wireless	<b>Bluetooth® v3.0</b>
Power Requirements & Consumption	AC 220 – 230V / 50Hz; 100W
Dimensions (H x W x D)	32 x 20 x 26 cm
Net Weight	11.1 kg / pair
Finishes	Black, Wenge, Walnut



The perfect high-fidelity addition to your system!

# Electronics Series

## HTA-2000B High-End Hybrid Amplifier with Bluetooth® audio streaming and built-in DAC Converter

TAGA Harmony HTA-2000B is a high-end hybrid integrated amplifier utilizing a 12AX7 tube preamp section with a cathode type amp circuit and a 12AU7 SRPP stage serving as a buffer amplifier. This solution ensures a very warm, linear and lifelike sound with high dynamic presentation at the same time.

The HTA-2000B can be used with variety of analog and digital sources. It has 3 analog gold-plated stereo RCA inputs built-in as well as a digital interface with 2 inputs (Coaxial and Optical) using 24 bit / 192 kHz digital-analog conversion. Besides our amplifier offers wireless connectivity based on **Bluetooth®** wireless technology and built-in aptX® audio codec – now you can stream your music with CD-like quality.

If you are looking for a powerful amplifier with the smooth natural sound that only a tube amp can provide, the HTA-2000B is probably the best choice on the market. It offers the best sound quality which is more than hard to overcome in its price point.



Class A / B



The high-performance tubes and precise high voltage transistor hybrid power supply provide voltage stability and very low AC ripple current. It reflects in a more natural and fresh sound with deep multidimensional soundstage.

The high-power transistors utilized in the 0dB current amplification circuit reveal more content of the music, giving extra pure energy and dynamics to drive even very demanding and powerful speakers.

The tube circuit cross-connected with audiophile grade MKP capacitors ensures stable playback improving music tone and sound field depth.

The audiophile grade Japanese ALPS volume potentiometer provides minimal noises and channels crosstalk and has excellent operational feel and limits errors between the two channels.

The oversized aluminum heat sink system helps to disperse internal heat and allows for long term high power playback with limited distortions.

The high-end class, gold-plated speaker terminals offer almost lossless audio signal transmission to speakers.

Power Output	2 x 100W, 8 ohm, Class A/B
DAC Resolution	24bit / 192kHz
Vacuum Tubes	2 x 12AX7; 2 x 12AU7
Inputs	Analog: CD, Line, AUX Digital: Optical, Coaxial
Signal/Noise ratio	90dB
Connectivity Wireless	<b>Bluetooth® v4.0, aptX®</b>
Frequency Response	20Hz – 20kHz (+/- 0.5dB)
Power Requirements & Consumption	220 - 230 V 50/60 Hz, 380W
Dimensions (H x W x D)	15.5 x 43 x 37.5 cm
Finishes	Black, Silver-White



## HTA-700B v.2 / HTA-700B SE v.2

Hybrid Integrated Amplifier  
with built-in DAC Converter

This midi sized integrated amplifier offers impressive powerful sound.

Thanks to its hybrid design it provides richness of sound synonymous with pure valve amplification.

You can connect it directly to your computer through a USB input port and thanks to a built-in high-resolution premium USB-DAC 24bit/192kHz you are able to change your digital music to a thrilling music experience.

To make your life even easier along with a standard RCA stereo input this amplifier offers wireless connectivity based on **Bluetooth®** wireless technology and aptX® audio codec (CD-like quality).

Using a built-in preamplifier output allows an additional power amplifier or powered speakers to be hooked up to your system and a headphone output is a perfect choice for those who prefer discrete listening.

The removable IEC power cable gives you an option to upgrade your system with a premium audiophile power cable in any time.



### New in v.2 version:

Increased power to 45W per channel at 4 Ohm. Now your music will play louder, more clearly and with higher dynamics!

Redesigned and enlarged power supply to offer better voltage stability and decreased AC ripple current. It reflects in a more natural and fresh sound with deep multidimensional soundstage.

Upgraded, audiophile grade volume potentiometer to provide lower noises and channels crosstalk, and excellent operational feel as well as to limit errors between the two channels.

Extended frequency response up to 28kHz to ensure more linear and lifelike sound and improve sound filed depth.

Power Output	2 x 45W, 4 ohm 2 x 35W, 6 ohm 2 x 26W, 8 ohm
DAC Resolution	24bit / 192kHz
Vacuum Tubes	2 x 6N2 (HTA-700B v.2) 2 x 12AX7B (HTA-700B SE v.2)
Inputs	CD RCA, USB (for computer)
Outputs	Pre-Out RCA, Headphones
Connectivity Wireless	<b>Bluetooth® v4.0, aptX®</b>
Frequency Response	20 Hz - 28 kHz
Headphone Impedance	32 - 320 Ohm
Power Requirements & Consumption	230V 50Hz, 100 W
Dimensions (H x W x D)	14 x 17.7 x 27 cm
Finishes	Black, Silver

## HTA-500B Hybrid Integrated Amplifier with built-in DAC Converter



This midi sized integrated amplifier provides impressive powerful sound.

Thanks to its hybrid design (based on two 6N2 vacuum tubes) it provides richness of sound synonymous with pure valve amplification.

To make your life even easier along with a standard RCA and 3.5mm stereo inputs HTA-500B offers wireless connectivity based on the **Bluetooth®** wireless technology.

Power Output	2 x 25W, 4 ohm, Class A/B
Vacuum Tubes	2 x 6N2
Inputs	3.5mm stereo jack, RCA stereo CD, RCA stereo AUX
Connectivity Wireless	<b>Bluetooth® v4.0, aptX®</b>
Power Requirements & Consumption	230 - 240V / 50Hz; 60W
Dimensions (H x W x D)	13 x 18 x 24 cm
Finishes	Black, Silver

## TIA-300 A/B Speakers Stereo Amplifier



This integrated amplifier can boast the finest music performance and perfect matching with most speakers available on the market. It utilizes advanced materials, state of the art engineering and innovate design by an international team of professional designers. It can deliver pure and distortion-limited power as well as rich sound performance with stunning accuracy, soundstage and sensational dynamics.

A built-in headphone output is a perfect choice for those who prefer discrete listening.

The TIA-300 offers versatile connectivity with 4 stereo inputs including a 3.5mm input for connecting modern sound sources like smartphones, tablets, laptops etc.

Thanks to 2 speaker outputs (A and B) – you can drive 2 pairs of speakers to fill large listening areas with equal sound or create two sound zones.

Power Output	2 x 40W RMS, 8 ohm 2 x 50W RMS, 4 ohm
Inputs	CD RCA / AUX1 RCA / AUX2 RCA, 3.5mm stereo jack
Outputs	Headphones
Frequency Response	30 Hz – 20 kHz
Headphone Impedance	20mW(32ohm)
Power Requirements & Consumption	220-240V 50/60Hz, 130 W
Dimensions (H x W x D)	9.8 x 42 x 33 cm
Finishes	Black



## HTR-1000CD Hybrid Stereo CD-Receiver

The HTR-1000CD is a high-fidelity stereo hybrid FM/DAB+ receiver with a built-in CD player. High 75W power per channel can properly drive different types of speakers.

Now your music will play louder, more clearly and with higher dynamics!



Hybrid design utilizing two 12AX7B tubes in the preamp section ensures a very warm, linear and lifelike sound with high dynamic presentation at the same time.

DAB+ (Digital Audio Broadcasting) tuner - listen to your favorite radio stations in the best digital quality. Enjoy your digital radio in high-resolution, crystal clear sound.

USB input – quickly and easily play your music from USB flash drivers (MP3 and WMA audio files).

**Bluetooth®** wireless audio streaming with aptX® audio codec – stream your music in CD-like quality from any smartphone, tablet, computer or other digital device.

Equalizer and treble-bass control to perfectly adjust the music to your preferences.

High-end banana speaker terminals accept raw speaker cables up to 10AWG and the most popular types of connectors.

Power Output	2 x 75W RMS, 4 ohm, Class A/B
Vacuum Tubes	2 x 12AX7B
CD Player	CD-Audio, CD-R/RW (MP3, WMA audio files)
Inputs	RCA stereo, 3.5mm stereo jack (front) USB (MP3, WMA audio files)
Connectivity Wireless	<b>Bluetooth® v4.0, aptX®</b>
Tuner	FM (87.5 – 108MHz), RDS DAB+ (174.928 – 239.200 MHz)
Radio Presets	20 FM / 30 DAB
Power Requirements & Consumption	220 - 240V 50/60Hz, 70W
Dimensions (H x W x D)	14 x 24.5 x 29.5 cm
Finishes	Black



**Pure Class A Vacuum Tube Headphone DAC/Amplifiers**

Our hybrid vacuum tube/solid state headphone amplifiers utilize discrete MOSFET outputs and a 12AX7 vacuum tube. Pure Class A, single ended design with no negative feedback offers the best sound performance and powerful sound. The THDA amplifiers use only fully discrete circuits with audiophile-grade Wima coupling and Rubycon power supply capacitors.

You can connect them directly to your computer through a USB input and thanks to the built-in high-resolution premium USB-DAC 24bit/192kHz you are able to change your digital music to a thrilling music experience.



## THDA-500T

Thanks to a 3.5V stereo preamp output you can connect your THDA-500T directly to a power amplifier or powered speakers. A precisely made, extremely quiet and stable, linear internal power supply supports ultra-high-end sound performance. The removable IEC power cable gives you an option to upgrade your system with a premium audiophile power cable in any time. Stunning sound embedded in a very rigid, non-resonant and luxurious steel-aluminum casing.



Power Output	2 x 500mW @ 100 Ohm load
DAC Resolution	24bit / 192kHz
Vacuum Tubes	1 x 12AX7
Inputs	RCA stereo AUX, USB (for computer)
Outputs	RCA Pre-Out
Headphone Impedance	30 to 300 Ohm (1/4")
AC Power, Power Consumption	220V-240V 50/60Hz, 10W
Dimensions (H x W x D)	12 x 17 x 23.5 cm
Finishes	Black

## THDA-200T

This miniature and sweet Class A vacuum tube headphone amplifier provides a clear, rich and powerful sound. It is portable yet powerful and the high-end sound has never been so affordable before!

Power Output	2 x 500mW @ 100 Ohm load, Pure Class A
DAC Resolution	24bit / 192kHz
Vacuum Tubes	1 x 12AX7
Inputs	RCA stereo AUX, USB (for computer)
Headphone Impedance	30 to 300 Ohm (1/4")
Power Requirements & Consumption	DC 18V / 1A
Dimensions (H x W x D)	5 x 15 x 11.5 cm
Finishes	Black





## DA-300 Digital - Analog Converter



The powerful, slim and elegant piece of art delivering best music directly from your digital source!

This miniature Digital-Analog Converter converts digital audio signal from your source to a high class analog signal with clearer, richer and more powerful sound.

Thanks to its small dimensions it can be easily added to any audio system, a computer (through the USB input) or a video game console - it can be almost „invisible” but still change your digital music to a thrilling experience.



DAC Resolution	24bit / 192kHz
Inputs	Coaxial, Optical, USB (for computer)
Output	RCA stereo
Power Requirements & Consumption	DC 18V / 1A
Dimensions (H x W x D)	5 x 15 x 11.5 cm
Finishes	Black

## PF-1000 High-End Audio Grade Noise Filter



PF-1000 is a perfect addition to your audio or home theatre system.

The electricity we are supplied with at our homes or workplaces is not clean and there is almost always at least some noise. This dirty electricity can have a negative effect on the audio-video performance of your system and even affects its life. PF-1000 removes noise from your electricity as well as isolates sound sources from the electrical network.

Max Spike Volt	3000V
Max Surge Current (8x20s)	1000A
Noise Filter	>-10dB (2-100 MHz)
Sockets	4 direct, 4 Filtered
Power Requirements & Consumption	230V-240V 50Hz, 0.1W<
Dimensions (H x W x D)	9 x 14 x 44.5 cm
Finishes	Black

Be stable means better sound!

# Speaker Stands

TAGA Harmony stands are elegant, solid and a „must to have” option for your bookshelf or surround speakers.



They utilize cable channel for hiding speaker cables as well as large silver spikes, which provides great stability.

Our stands isolate speakers from the floor, increasing the transparency of sound and providing better definition and the basis for the bass.



## Features and specifications:

- Black matt heavy-duty painting
- Speaker wire channel
- Stable, oversized silver spikes
- Rubber pads on the upper base
- Max speaker weight: 30 kg /pcs.
- Central tube diameter: 4,5 cm
- Lower base dimensions (W x D) 23 x 30 cm
- Available in 3 heights 96, 76 and 66 cm

# Cables & Accessories

TAGA Harmony offers top build quality Audio-Video cables with superb performance dedicated for demanding customers and installers. Although quality of our cables is high our prices are not! - now everybody can enjoy the best sound!

## PLATINUM-18 Terminated Speaker Cables

The Platinum speaker cable is designed for use in premium high level hi-fi systems. Its braided construction has no surface or center and frequency-related phase shift is effectively canceled. Different frequencies signals are distributed through different paths so the internal disruptions are greatly reduced as well as losses in high registers are limited.

The sound is very transparent and natural in higher and mid frequencies as well as dynamic and extended in a bass section.



2-conductor, 18 AWG x 8 / conductor Terminated with high-grade copper banana plugs or available in meters
Braided multi-stranded, ultra-high purity 99.99% Oxygen Free Copper wires 16 wires per 1 conductor
HDPE – Ultra low-loss, low capacitance high-density polyethylene dielectric insulation for conductors
Low friction, easy-to-pull outer PVC jacket

## BLUE-12 / BLUE-16 Terminated Speaker Cables

The BLUE speaker cable is designed for use in premium hi-fi systems but it carries a very un-premium price tag!

12 or 16 gauge multi-stranded ultra-high purity OFC wiring and pure and high-grade copper banana plugs make your system to sound much better. The BLUE cable is precisely engineered for transparent sound-staging, enhanced imaging, dynamics, detail and low-pitched bass.



2-conductor, 12 or 16 AWG Terminated with high-grade copper banana plugs
Multi-stranded, ultra-high purity 99.99% Oxygen Free Copper conductors
HDPE – Ultra low-loss, low capacitance high-density polyethylene dielectric insulation for conductors
Low friction, easy-to-pull outer PVC jacket

# Cables & Accessories

## TAVC-SY Subwoofer Y Cables

The TAVC-SY series cables utilize special "Y" design for connecting the left and right active subwoofer inputs for increased clarity and bass response (higher gain).

Ultra-high purity OFC conductors and high-grade 24K gold-plated RCA connectors.

Now your bass will be stronger, deeper and more dynamic!

Ultra-high purity 99.99% Oxygen Free Copper conductors, Precision machined, low-profile RCA connectors with 24K gold-plated contacts
FEP - low friction and non-reactivity extra flexible insulation for conductors
Low friction, easy-to-pull outer PVC jacket



## TUD A-to-B USB 2.0 Digital Cables

Because music signals are continuous streams of data, in case of any disruption or errors during transmission through a USB cable there is no chance to replace any missing part of the audio signal. It is crucial to use a high grade USB cable that preserves more information and significantly improves sound quality. TAGA Harmony high-performance USB cables are capable of minimizing transmission errors and frequency-related phase shift, what dramatically improves the sound which is more clear, natural, tight and powerful.



22 + 24 AWG Terminated with 24K Gold-Plated connectors
Ultra-high purity 99.99% Oxygen Free Copper conductors
24 AWG conductor: HDPE - Ultra low-loss, low capacitance high-density polyethylene dielectric insulation
22 AWG conductors: PVC Aluminum-magnesium braid shielding and Nylon jacket

## TAVC Speaker Cables



2-conductor, Available: Transparent or Gray Jacket: 10AWG & 14AWG, Flat type in Gray Jacket: 16 AWG
Multi-stranded, CCA (Copper Clad Aluminum) conductors
Low capacitance dielectric insulation
High stability, pressure extruded, ultra-flexible clear PVC outer jacket

## HD HDMI Cables



High speed HDMI cable with Ethernet, supports 3D,1080P
Gold plated connectors
Flat, flexible design for easy installation

## TCB-001 BANANA Plugs

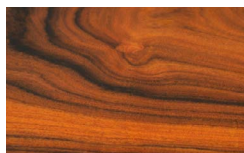


24K direct gold plating
Fits speaker cables up to 10 AWG
Screw-down

# Speaker Finishes



ROSEWOOD VENEER WITH CLEAR MATT OR GLOSS PIANO LACQUER



AFRICIAN WALNUT VENEER WITH CLEAR GLOSS PIANO LACQUER



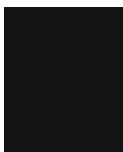
WALNUT VENEER WITH CLEAR MATT LACQUER



PIANO WHITE LACQUER HIGH GLOSS WHITE



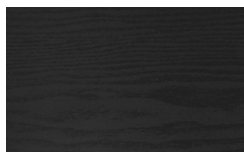
PIANO BLACK LACQUER HIGH GLOSS BLACK



MATT BLACK



MATT WHITE  
WHITE MATT PVC



BLACK



WENGE



WALNUT



WHITE

BLACK, WENGE, WALNUT, WHITE and WHITE MATT PVC are vinyl finishes. Not all finishes are available for all products.

## TERMINOLOGY of TECHNOLOGY

S-TLIE	SUPER TAGA LOW INTERFERENCE ENCLOSURES
TLIE	TAGA LOW INTERFERENCE ENCLOSURES
TCDP	TAGA CLEAR DESIGN PANEL
O-TPTTD	OVERSIZED TAGA PURE TITANIUM TWEETER DOME DRIVER
TPTTD	TAGA PURE TITANIUM TWEETER DOME DRIVER
TRT	TAGA RIBBON TWEETER
E-TPACD	EXTENDED TAGA PURE ALUMINIUM CONE DRIVER
TNPPCD	TAGA NON-PRESSED PAPER CONE DRIVER
TWCD	TAGA WOOLEN CONE DRIVER
TRSCD	TAGA REINFORCED STRAW CONE DRIVER
TPACD	TAGA PURE ALUMINIUM CONE DRIVER
TPAPR	TAGA PURE ALUMINIUM PASSIVE RADIATOR
TDSC	TAGA DYNAMIC SURROUND CONTROL
TPAIC	TAGA PURE ALUMINIUM INJECTION-MOLDED CHASSIS
TAVS	TAGA AIR VENTILATION SYSTEM
E-TPAF	ENLARGED TAGA PURE ALUMINIUM FACEPLATE
TPAF	TAGA PURE ALUMINIUM FACEPLATE
TWG	TAGA WAVEGUIDE FACEPLATE
TTP	TAGA TOP PLATE
TSAC	TAGA SUPER AIR COOLING
THAW	TAGA HIGH AMPLITUDE WOOFER
THCA	TAGA HIGH CURRENT AMPLIFIER
HPCDA	HIGH POWER CLASS D AMPLIFIER







**TAGA**<sup>®</sup>  
**HARMONY**

*To Achieve Glorious Acoustics*

**WORLDWIDE & CHINA:**

Taga Audio Technology Company Limited  
3F, Building D1, Shizou Street Section  
Baichen Road, Shunde District, Foshan City,  
Guandong Province, China, 528313

Phone: +86-757-2986-8797  
Fax: +86-757-2986-8796

Email: Sales@taga-audio.com.cn

**EUROPE:**

Polpak Poland Sp. z o. o.  
Al. Jerozolimskie 333A  
05-816 Reguly / Warsaw  
Poland

Phone / Fax: +48-22-353-14-14

Email: Sales@taga-audio.com

Distributor / Dealer



[www.taga-audio.com](http://www.taga-audio.com)

We reserve the right to amend details of the specifications or designs without notice in line with technical developments.  
Bluetooth® is a registered trademark of Bluetooth SIG., Inc.  
All other brands and product names are trademark of their respective owners.