



Community

our legacy
our future

2012 ANNUAL REPORT

Table of Contents

Cutting-Edge Research	2
The Decision to Make a Difference: The Doornink Family Charitable Fund Research Award in Colorectal Cancer	5
Lung Cancer Workshop IX: Focus on Accelerating Progress in Lung Imaging and Improving Patient Outcomes	6
14th Annual Dialogue for Action on Colorectal Cancer Screening: Today's Progress, Tomorrow's Challenge	7
Community Grants: Funding Nationally, Acting Locally	8
Colorectal Cancer Prevention Through Community Screening Prevent Cancer Super Colon Celebremos la vida!	10
Reaching Rural Populations: State Fairs Mammovan	11
Breakaway from Cancer	12
Uniting Communities Across the Aisle: Congressional Families Cancer Prevention Program	13
Digital Media—Expanding the Prevent Cancer Community	14
Prevent Cancer Foundation 5K	16
Annual Spring Gala Dazzles Once Again: Modern+Majestic=Switzerland	18
Beneficiary Events	20
Partnership in Prevention: Making an Investment in the Fight Against Cancer	24
Officers & Directors 2011-2012	25
Medical Advisory Board	26
Scientific Review Panel	27
Financial Statement	36



Stop Cancer Before It Starts!

The Prevent Cancer Foundation is a national non-profit health foundation whose mission is saving lives through cancer prevention and early detection.



Dear Friends,

Two thousand twelve has been quite a year—much has been accomplished as we move forward with our cancer prevention and early detection efforts. Early detection and prevention strategies are more important than ever—not only is prevention the most effective way to reduce cancer incidence and death, but it is also the most cost effective way to manage health care costs. This year, more than 1,600,000 Americans will be diagnosed with cancer and more than 575,000 will die from the disease. However, up to 60 percent of cancer cases and more than 50 percent of cancer deaths are preventable—with the knowledge we have right now.

Earlier this year Dr. Bert Vogelstein (an eminent researcher in cancer genetics at Johns Hopkins), reported on an important study in which the genomes of 3,000 sets of twins were sequenced. Dr. Vogelstein and his group concluded that even knowing the sequence of every gene in the body still cannot predict the risk of developing specific diseases. Dr. Vogelstein firmly stated: “We believe that genomic tests will not be substitutes for current disease prevention strategies. Prudent screening, early diagnosis, and prevention strategies, such as not smoking and removing early cancers, will be the keys to cutting death rates.” This study provided an additional validation of the Prevent Cancer Foundation’s mission of saving lives through cancer prevention and early detection.

The cost of health care continues to be a looming issue, and over the past year I have attended many conferences, meetings and workshops addressing the issue of the high and unsustainable cost of cancer treatment. The implications of this issue are staggering, as cancer costs are projected to reach \$158 billion by the year 2020.

The conference *Delivering Affordable Cancer Care in the 21st Century*, sponsored by the Institute of Medicine’s National Cancer Policy Forum, centered on developing solutions to curb the escalating costs of cancer care without jeopardizing the quality of prevention and treatment. Representatives from medical, government, industry and academic fields presented sessions on current research and policy issues related to the delivery of affordable cancer care.

I also attended a *Health Technology Assessment Workshop* this past summer, which took place alongside the World Cancer Congress in Montreal, Canada. At this workshop I was introduced to innovative technologies that aim to improve cancer care and prevention as a cost-effective strategy. Attendees and presenters of the 2012 Congress included experts in cancer control from around the world who covered topics on the global cancer epidemic.

The Prevent Cancer Foundation continues its commitment to serving communities across the nation—educating the public on cancer prevention and early detection, healthy lifestyles and the importance of regular screening. The Foundation connects people with lifesaving information and direct service programs, while continuing to fund cutting edge cancer research, provides vital community outreach and education programs and advocates for important issues on Capitol Hill.

I am proud of everything we have accomplished over the past 27 years and look forward to the Foundation’s future with optimism and enthusiasm.

Sincerely,

Carolyn Aldigé

Carolyn R. Aldigé
President and Founder

Cutting-Edge Research

Since 1985, the Prevent Cancer Foundation has funded innovative cancer research on prevention and early detection, awarding grants or fellowships to over 450 scientists from leading academic medical centers across the country. Proposals are reviewed by members of our

distinguished Scientific Review Panel, drawn from institutions such as the National Cancer Institute, Georgetown University Lombardi Cancer Center, MD Anderson Cancer Center, Weill Cornell Medical College and Johns Hopkins Kimmel Cancer Center. The Foundation's Board

of Directors approves funding to scientists whose work is deemed outstanding by the review panel. This year's grantees are an exceptional group, continuing to push the envelope of science. We asked some current grantees to share their thoughts.

Vijayakrishna Gadi, M.D., Ph.D.
Fred Hutchinson Cancer Research Center



PREVENT CANCER FOUNDATION – LIVING IN PINK GRANT

The Foundation is supporting Vijayakrishna Gadi, M.D., Ph.D., to research a less-studied marker of breast cancer risk, fetal microchimerism (a small number of cells that move from a fetus to a woman during pregnancy), which could lead to new opportunities for secondary prevention.

Q: What impact do you hope your research will make on the future of cancer prevention and early detection?

A: Our research examines a new take on the old paradigm of how having had a child in the past protects against breast cancer in the future. Instead of simple hormonal changes, we believe that immune cells acquired from the child during pregnancy persist and participate in immune defense against breast cancer. Once we better understand the mechanism of how all this works, we will turn to vaccine-based or cell-based approaches to prevent breast cancer.

Q: How has Prevent Cancer Foundation funding furthered your research?

A: We have already begun using the funds to compare fetal microchimerism in women with a history of DCIS (ductal carcinoma in situ) and healthy control women. Our studies in blood suggest a very potent and highly statistically significant decrease of protective fetal cells in women with DCIS. We are performing final analysis for publication at this time. We have also begun the second aspect of our study, which involves DCIS tissue analysis for fetal microchimerism.

FIGDOR FAMILY RESEARCH GRANT

During Dr. Iris Romero's preliminary studies in ovarian cancer, metformin prevented tumor development in mice and inhibited proliferation of ovarian cancer cells. The Foundation is funding Dr. Romero to continue this research by clarifying the cancer prevention effect of metformin in high-risk groups.

Q: What impact do you hope your research will make on the future of cancer prevention and early detection?

A: My hope is that our research will identify a number of commonly used medications that also have a role as cancer prevention agents. Given the high cost and difficulty of new cancer drug development, I believe tapping into the anti-carcinogenic potential of low-cost and widely used drugs is an important paradigm shift in cancer prevention research.

Q: How has Prevent Cancer Foundation funding furthered your research?

A: With funding from the Prevent Cancer Foundation, we have been able to demonstrate the strong effect that metformin has on the growth of ovarian cancer. Using an integrated approach, we have tested the effect of metformin on ovarian cancer using in vitro cancer biology techniques, mouse models of ovarian cancer and human clinical data and samples. We are now using these pre-clinical findings to design a randomized clinical trial of these drugs as secondary prevention in women with ovarian cancer.



Iris Romero, M.D.
The University of Chicago

Suzanne O'Neill, Ph.D.
Georgetown University
Lombardi Cancer Center



HOLDEN FAMILY GRANT IN BREAST CANCER

The Foundation is funding Suzanne O'Neill, Ph.D., to assess cognitive, emotional and attitudinal variables related to breast cancer risk, with a focus on breast density and management approaches. She will use this information to develop and pilot decision support materials aimed at increasing appropriate use of chemoprevention and enhancing screening to help prevent breast cancer in this high-risk group.

Q: What impact do you hope your research will make on the future of cancer prevention and early detection?

A: To date, our data demonstrate that a significant number of women are aware of their breast density status, perhaps due to a combination of efforts by the scientific community to integrate density into risk models to support clinical translation, more significant coverage of this health issue in the popular press, legal mandates to disclose density status in some states and provider awareness. However, many women who are aware of their risk have not received specific recommendations about how to manage this risk. This shows a need in our interventions that we will be well prepared to meet using our data and research team expertise.

Q: How has Prevent Cancer Foundation funding furthered your research?

A: The funding from the Prevent Cancer Foundation has significantly enhanced my research program, opening additional lines of research that would not have been available otherwise. These include both decision support interventions for women at increased risk and engagement in the active area of personalized risk-based screening.

RICHARD C. DEVEREAUX OUTSTANDING YOUNG INVESTIGATOR AWARD IN LUNG CANCER PREVENTION

Genetic risk factors have been identified for lung cancer, yet it is unclear how to make efficient use of individual genetic information for prevention and early detection of this disease. Foundation-funded researcher Bo Peng, Ph.D., is investigating whether it is cost-effective to use individual genetic profiles for the prevention of lung cancer.

Q: What impact do you hope your research will make on the future of cancer prevention and early detection?

A: By predicting and comparing the benefits, harms and cost of various cancer prevention strategies that make use of individual genetic profiles, my research will hopefully provide valuable information regarding the use of individual genetic information for the prevention of lung cancer. Such information can help design more cost-effective cancer prevention strategies. Even if the genetic risk factors for lung cancer are proven to be so weak that they provide no additional benefit to existing cancer prevention strategies, such negative results could help allocate resources.

Q: How has Prevent Cancer Foundation funding furthered your research?

A: The funding from the Prevent Cancer Foundation allowed me time to develop my research in an exciting new area, to gather preliminary results and compete for federal funding. It also helped me to support a student who has assisted tremendously in carrying out simulations and analyzing results. I appreciate funding from the Prevent Cancer Foundation because it provided me a great stepping stone to my career as an independent researcher, which is especially valuable in today's tough funding environment.

Bo Peng, Ph.D.
University of Texas,
MD Anderson Cancer Center



DOORNINK FAMILY CHARITABLE FUND CHALLENGE GRANT

Colorectal cancer is the second leading cause of cancer deaths in the U.S. With screening, colorectal cancer can be prevented or detected early. Dr. Mori's goal is to address the challenge to better identify those at highest risk of developing colorectal cancer—those with the greatest need of colonoscopic screening and other preventive measures. This grant is made possible by the Doornink Family Charitable Fund, Mrs. Cecile Tauzin and several generous donors.

Q: What impact do you hope your research will make on the future of cancer prevention and early detection?

A: My research aspires to develop a DNA and lifestyle factor-based test for early detection of colon cancer. The test will be able to identify not only people with colon cancer or pre-cancerous abnormalities, but also people who will develop colon cancer, but don't have detectable abnormalities.

Q: How has Prevent Cancer Foundation funding furthered your research?

A: With the support of the Prevent Cancer Foundation, I have already identified two new DNA markers and 20 more candidates that may be useful in the final test. These markers are currently under rigorous examination for their diagnostic accuracy in pilot patient samples.



Yuriko Mori, M.D., Ph.D.

Johns Hopkins University,
School of Medicine

We need more information on what can be done to prevent this disease. I want to help change that, which is why I support colorectal cancer research.

– Ron Doornink



The Decision to Make a Difference

DOORNINK FAMILY CHARITABLE FUND RESEARCH AWARD IN COLORECTAL CANCER

When colorectal cancer took the lives of Ron Doornink's beloved sister Josien and her husband Ton, he initially felt helpless but decided to take action. He wanted to know what caused colorectal cancer and what he could do to ensure other loved ones wouldn't suffer the same fate. His search for information led him to the Prevent Cancer Foundation. Impressed with the Foundation's focus on prevention and early detection, rather than a cure for cancer, Ron knew immediately he wanted to get involved. "There are so many organizations that focus on finding a cure for cancer, but they don't tell you what you can do to prevent cancer from affecting your family in the first place."

Today, Ron is a proud member of the Prevent Cancer Foundation Board of Directors where he generously donates his time, leadership and support by sharing his story and challenging others to help share the message that cancer prevention saves lives. An example of Ron's leadership and commitment to cancer prevention and early detection was his willingness to share his family's tragic story with a room of over 800 attendees at the Foundation's 2010 Annual Spring Gala. He followed his touching remarks with a pledge to match dollar-for-dollar each donation made to the Foundation that evening. His challenge resulted in over \$118,000 raised to help "Light the Way to Prevention."

His work with the Foundation has also resulted in Ron's passionate advocacy for cancer prevention research. He strongly believes that "current funding for prevention research is nowhere near adequate to eradicate cancer in our lifetime." So in 2011, Ron and his wife Martha decided to issue a challenge to the Prevent Cancer Foundation: they would provide a matching grant of \$40,000 to fund half of a two-year research grant in colorectal cancer if the Foundation raised the matching funds to award the grant. With the support of several generous donors, the Foundation raised the required funds and Ron and Martha established the Doornink Family Charitable Fund Research Award in Colorectal Cancer.

The two-year research grant was awarded to Dr. Yuriko Mori of Johns Hopkins University School of Medicine for her study of the preclinical development of a colorectal cancer risk stratification marker. Dr. Mori's research to assess a patient's risk of either having or developing colorectal cancer is at the heart of Ron's focus to support efforts that may one day result in the prevention of colorectal cancer. "We need more information on what can be done to prevent this disease. I want to help change that, which is why I support colorectal cancer research."

Ron's story is a testament to the strength of one person's efforts to Stop Cancer Before It Starts! Over the next several years, he would like to see new advances in the field of cancer prevention research include a more open dialogue between researchers and the general public. When asked what he hopes his work with the Prevent Cancer Foundation will demonstrate to others, he simply says, "I just hope that more people decide to support prevention research because it is so critical. It took a family tragedy to open my eyes and now it just seems obvious."

Lung Cancer Workshop IX Focuses on Accelerating Progress in Lung Imaging and Improving Patient Outcomes

The Prevent Cancer Foundation hosted the ninth in a series of Lung Cancer Workshops on catalyzing image processing research to improve lung cancer research and related health outcomes. Held on May 3-4, this year's Workshop focused on moving lung image processing into clinical applications for the detection and treatment of lung cancer. Chaired by Prevent Cancer Foundation Scientific Director Dr. James Mulshine, the Lung Cancer Workshop is a highly collaborative and multidisciplinary forum that brings together leading medical and surgical oncologists, pulmonologists and radiologists, along with representatives of federal agencies, the biopharma industry, imaging scientists and patient advocates.

The results of the recent National Lung Screening Trial have demonstrated the significant impact of spiral CT-based lung cancer screening in reducing mortality. As a result, professional associations are announcing new guidelines recommending this screening for high-risk individuals who are at risk of developing lung cancer. A critical component that will impact the efficiency of these guidelines relates to the emerging technology of using computer aided diagnosis to determine growth rates of lung nodules by comparing their volume measurements on serial CT scans. Despite recent progress in this area, there is still a bottleneck due to the lack of images and data available to researchers.

At the Lung Cancer Workshop, several large collections of high resolution images obtained across multiple time points were described and will be made freely available to the research community. These resources are a major step in advancing research into early lung cancer using a platform of Open Research, as championed by the National Institutes of Health and the Institute of Medicine.

The initial platform will provide the community with an open, transparent and thorough view of the performance of various algorithms for measuring medical images and managing patients. This transparency adheres to the scientific method that is anchored in the practice of verifying the reproducibility of published results. It is this reproducibility that empowers others to repeat experiments and track the advancements of science.

The Lung Cancer Workshop is co-sponsored by the Optical Society of America and the International Association for the Study of Lung Cancer. For more information about the Lung Cancer Workshop, visit preventcancer.org.



Participants discuss informational poster abstracts during a break.





14th Annual Dialogue for Action on Colorectal Cancer Screening: Today's Progress, Tomorrow's Challenge

MARCH 21-23, 2012

BALTIMORE, MD.

This year's conference brought together many passionate members of the colorectal cancer community—primary care doctors, oncologists, gastroenterologists, nurses, community health workers, state health department and federal agency staff, researchers, health educators, insurers and others from across the country—all committed to increasing colorectal cancer (CRC) screening.

The Dialogue for Action is a highly interactive conference that sparks a lively exchange of ideas, experience and knowledge. Its goal is to provide people working in the field of colorectal cancer screening with recent developments in screening and in the larger arenas of public health and clinical preventive services. The conference also provides attendees with concrete steps they can take to enhance their projects, programs and practices. The Foundation is a convener of the colorectal cancer community, bringing together its members to facilitate discussion of challenges and solutions to promote advances in the field.

The 2012 conference began with a distinguished keynote panel on the quality and cost of health care, followed by sessions on what it will take to keep increasing screening rates and how the coming changes in paying for health care will affect primary care. Big changes like these will affect the delivery of health care in our country in the future. View the entire agenda and many of the presentations by visiting www.dialogueforaction.org.

Keynote panelists (L to R) J. Sanford Schwartz, M.D. (University of Pennsylvania Perelman School of Medicine), Richard L. Snyder, M.D. (Independence Blue Cross) and Richard J. Baron, M.D. (MACP Center for Medicaid and Medicare Services Center for Innovation) are introduced by moderator Susan Dentzer, Editor-in-Chief of health policy journal "Health Affairs".



As part of the conference, the Foundation hosts the Cancer Prevention Laurels Awards Luncheon, co-sponsored by the National Colorectal Cancer Roundtable (NCCRT), to recognize and celebrate leaders in cancer prevention. Standing with Carolyn Aldigé, President and Founder of the Prevent Cancer Foundation on right and Robert Smith, Ph.D. of NCCRT, on far left, are Laurels recipients (L to R): Franklin Berger, Ph.D., Ms. Ann Fonfa and Sidney Winawer, M.D., who received a Lifetime Achievement Award.



Community Grants: Funding Nationally, Acting Locally

PROJECT: Powwow for Hope: Dancing for life, love & hope
ORGANIZATION: The American Indian Cancer Foundation (AICAF)
LOCATION: Minneapolis, Minn.
TARGET POPULATION: American Indian Families

DESCRIPTION: The American Indian Cancer Foundation (AICAF) organized the Powwow to create a positive, culturally appropriate environment to honor and support cancer survivors, caregivers and families affected by cancer and to increase cancer awareness and prevention knowledge for American Indian families. This very special event was held April 28, 2012 with over 2,000 participants from several tribal nations across the Midwest. Notable guests included Red Lake Nation Tribal Chairman Buck Jourdain and U.S. Senator Al Franken.

By empowering people to get involved as volunteers, dancers, drummers, singers, educators, or to contribute monetarily, they successfully met their goals and raised over \$30,000, which will be used for community defined cancer initiatives for cancer support groups and cancer screening incentives. Powwow for Hope provided opportunities for Native people to get the support that has been missing when it comes to dealing with cancer. The Powwow for Hope was an immensely positive and successful event.

Powwow for Hope was a dream shared by spiritual leader Michael Dahl of the White Earth Anishinaabe. "Michael is an energetic and passionate leader and volunteer for AICAF because he, like so many of us, has experienced the devastation caused by the cancer epidemic among American Indians."

—Kris Rhodes, AICAF Executive Director

PROJECT: L.E.A.P. AYA Cancer (Learning, Education, Awareness, Prevention)
ORGANIZATION: Research Institute at Nationwide Children's Hospital
LOCATION: Columbus, Ohio
TARGET POPULATION: Medical students and residents

DESCRIPTION: The definition of the adolescent and young adult (AYA) cancer patient has evolved over time, but recently has been defined as those diagnosed with cancer at ages 15 through 39. The incidence of cancer in the AYA population has steadily increased over the last 25 years, but the overall survival in these patients has not improved. AYA patients are a unique population with regard to both cancer epidemiology and psychosocial needs. Patients are caught between two worlds, childhood and adulthood.

The AYA Oncology program identifies the urgent need for education, training and communication activities to raise awareness and recognition of AYA preventable cancers at both public and professional levels. A new outreach program, "L.E.A.P. AYA Cancer (Learning, Education, Awareness, Prevention)" is a combination of "teach the teacher" and "pay it forward". The program provides knowledge regarding the most common AYA cancers, the signs and symptoms associated with them, and information about the many ways to prevent these cancers to medical students and residents.

"By empowering these medical professionals with this knowledge early in their learning, we hope to influence the way they examine and educate patients throughout their medical career. Armed with this knowledge, several residents have already volunteered to 'pay it forward' and in the fall will be going out into the community to educate high school and college students."





PROJECT: Play it Safe Utah

ORGANIZATION: Utah Department of Health

LOCATION: Salt Lake City, Utah

TARGET POPULATION: Hispanic and non-Hispanic youth and their parents in two underserved/low income communities and one community shown to have a high risk for skin cancer.

DESCRIPTION: Utah has the second highest melanoma incidence rate in the nation at 28.1 cases per 100,000 population in 2008. The Utah Cancer Control Program will implement an educational intervention that will encourage Utah children and their parents to practice sun safe behaviors.

The Program is partnering with professional soccer player Chris Wingert and local sunscreen manufacturer Shaka Laka to educate Utahns through local parks and recreation youth soccer leagues in low income and underserved areas, as well as other counties in Utah with high melanoma incidence rates. Materials will include information on the dangers of the sun as well as information on sun safety. The program has three major components: education, provision of sunscreen and evaluation.

“The Prevent Cancer Foundation funding made this program possible! When Chris first approached us we didn’t have a way to support a new project, but the Prevent Cancer Foundation funding allowed us to capitalize on the opportunity to work with him.”

—Kristi Smith, Health Program Specialist, Utah Department of Health



PROJECT: Health Care Access Programs

ORGANIZATION: Women’s Resource Center

LOCATION: Larimer County, Colo.

TARGET POPULATION: Women at risk of breast or reproductive cancers (cervical, ovarian and uterine), especially women facing barriers and disparities to care, including low income, uninsured and ethnic and cultural minorities.

DESCRIPTION:

The Women’s Resource Center seeks to double the number of mammograms offered through mobile mammography vans, and to improve and expand patient navigation and other services. The Women’s Resource Center uses an innovative continuum of care model that provides a full spectrum of breast and reproductive cancer services. WRC connects clients to medical homes, facilitates access to specialist providers for women’s cancers and develops a package of financial support tailored to individual clients that makes health care affordable. Patient navigation services are offered to decrease barriers to care and increase treatment compliance.



Colorectal Cancer Prevention Through Community Screening

This spring the Foundation held its second annual **Screening Saves Lives National Challenge**, a competition that champions grassroots community projects aimed at increasing awareness of colorectal cancer prevention and early detection. This year's theme was "Families and Colorectal Cancer." After the public voted online for their favorite projects, the top third of vote-getting projects went on to be reviewed by an external committee to determine the winners.

Good Samaritan Hospital in Kearney, Neb. won first place and received a \$5,000 grant for its colorectal cancer awareness project and a visit from the **Prevent Cancer Super Colon™**. The hospital, in partnership with the local YMCA, will put on an event for their rural Nebraska community with educational presentations and materials and a family "fun run" to promote physical activity, healthy eating and regular screening. The project aims to provide education to 3,000 individuals and screening services to 2,000 individuals.

The second-place winner was Advocate Christ Medical Center in Oak Lawn, Ill. which was awarded social media counsel from the Prevent Cancer Foundation. There were many excellent applicants for this year's National Challenge—visit screeningsaves.org to view all the 2012 entries.

Prevent Cancer Super Colon

➔ 14 stops in 14 cities throughout the year.

➔ Over 6,415 visitors.

This year included a special five-stop tour through Michigan's upper and lower peninsulas. Sponsored by the Inter-Tribal Council of Michigan, the tour was able to bring much needed colorectal cancer education and awareness to more isolated parts of Indian country.

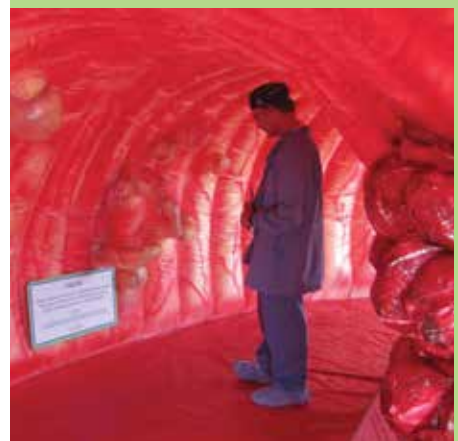
¡Celebremos la vida! (Let's Celebrate Life!)

Over its 18 years of existence, the ¡Celebremos la vida! program has provided services to over 8,100 women, including over 7,900 mammograms and 7,400 Pap tests at sites in Washington, D.C., Silver Spring, Md. and Woodstock, Ill. Over 10,200 Celebremos participants, their friends and family members have benefitted from education about breast and cervical cancer, as well as healthy lifestyle, nutrition, colorectal cancer and other preventable cancers.

To further expand the reach of this successful program, the Foundation is completing a two-year grant from Susan G. Komen for the Cure®, including the design and testing of an informal outreach tool for women to use to encourage friends and family members to be screened for breast cancer. The women are trained as *campeonas* (champions) and use educational resources such as a conversation guide and novella to engage and discuss breast health with others.

"I am very satisfied with the service. To me it would be great if this service would be expanded to more people like me, who have no health insurance and need programs like this one. Thank you very much to all staff for their time and dedication."

—Participant from Georgetown University Lombardi Comprehensive Cancer Center, Washington DC (comment translated from Spanish)



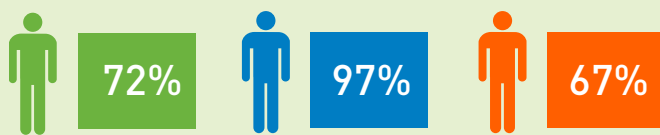
Reaching Rural Populations: State Fairs

Since 1993, the Foundation has provided free cancer screenings and prevention education through Health Awareness and Screening Booths at state fairs across the country, partnering with local health care providers and members of the U.S. Senate. The goal of this project is to reach largely underserved rural populations with cancer screening and risk reduction information. In 2011, the Foundation sponsored projects in Kansas, Nebraska, South Dakota and Iowa.

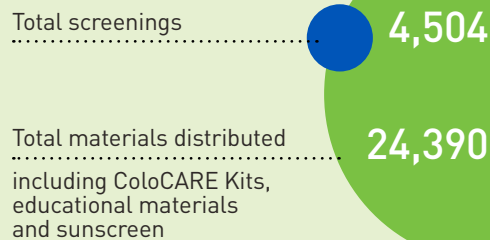
This past year was the start of a beneficial partnership in Iowa with the Iowa Farm Bureau Federation. The Farm Bureau's large, centrally placed tent at the fair increased our visibility to fairgoers and allowed us to offer screenings on-site. The Nebraska project included the screening and education booth at the state fair, a booth at the Cattleman's Ball reaching rural ranchers, the Black Health and Wellness Fair reaching African-Americans and the South Omaha Community Health Fair, reaching Hispanics and migrant workers.

MEASURES OF SUCCESS*

*Based on data from Kansas, Iowa, S.D.



- Over 72% of attendees surveyed felt staff and volunteers were helpful in answering their questions
- Over 97% felt informed about the screenings provided at the booths
- Over 67% reported being screened for cancer at the booth/fair



Mammovan

The Prevent Cancer Foundation continues its 17 year partnership with the George Washington University Cancer Center to fund the traveling mammography van, the "Mammovan."

- Over 2,400 women were screened for breast cancer in FY12.
- More than half the women were low-income and uninsured.
- Over 35,000 women have been served since inception of the program.
- There have been 116 breast cancer diagnoses since inception – and all women received treatment regardless of insurance or ability to pay for care.



Breakaway from Cancer

This year the Prevent Cancer Foundation celebrates its fourth anniversary of joining the Breakaway from Cancer partnership and we could not be more thrilled! Founded in 2005 by Amgen, Breakaway from Cancer unites four nonprofit organizations – the Prevent Cancer Foundation, Cancer Support Community, Patient Advocate Foundation and National Coalition for Cancer Survivorship - with the goal of empowering people through knowledge. Together we are able to educate the public about the entire cancer care continuum, from prevention through survivorship.

We were grateful to meet thousands of people at events in Lewistown, Maine; Greenville, S.C.; Austin, Texas; and throughout the eight-day 2012 Amgen Tour of California. As a partner in Breakaway from Cancer, we are privileged to not only get the chance to share our resources with the wonderful people we meet, but to also hear their personal stories about cancer. It is truly inspiring to see such large groups of people, most of whom have been touched by cancer in some way, coming together to help each other and fight cancer. To learn more, please visit www.breakawayfromcancer.org.

Advocating for a Cancer-Free Future

The Prevent Cancer Foundation engages lawmakers through education and advocacy to promote the enactment of laws that support cancer research and prevention. We work individually and as part of an entire community of grassroots advocates and other health advocacy organizations to maximize our influence. We strive to improve the country's commitment to research, access to screening and primary prevention.

Our network of grassroots advocates continues to grow. It is these voices that can help influence the commitment of legislators to support laws that will reduce cancer incidence and mortality for current and future generations. The Prevent Cancer Foundation extends our reach through engaging in coalitions including the National Coalition for Cancer Research, the Coalition for the Advancement of Medical Research, Cancer Leadership Council, One Voice Against Cancer and the Coalition for a Stronger FDA, to demonstrate unity and collaboration within the cancer community.

Among the Foundation's legislative successes in 2012 are:

RESEARCH FUNDING: Despite extremely tight Federal budgets, funding for medical research and cancer control programs at the National Institutes of Health and the Centers for Disease Control and Prevention received modest increases in the FY 2012 budget. This increase in funding ensures that there will continue to be progress in reducing the burden of cancer within our communities.

REGENERATIVE MEDICINE: We have led efforts to maintain support for embryonic stem cell research, working with the Coalition for the Advancement of Medical Research, on Capitol Hill and in tandem with the Department of Justice to ensure the continuation of a Presidential Executive Order enhancing regenerative medicine research. This field of research holds great promise for future breakthroughs for diseases that affect millions of individuals. We hosted a "Members Only" briefing on Capitol Hill, speaking to lawmakers about adult and embryonic stem cell advances across diseases.



BUILDING SUPPORT FOR LEGISLATION THAT IMPROVES PATIENT ACCESS TO SCREENING: Prevent Cancer worked to build support for legislation in Congress that improves access to screening. Two examples of these bills are the S. 752/H.R. 1394, the Lung Cancer Mortality Reduction Act of 2011 and HR 4120, the Removing Barriers to Colorectal Cancer Screening Act of 2012.

TANNING BED REGULATION: Indoor tanning has been strongly linked to skin cancer. The Foundation engaged advocates in approximately 20 state and local efforts to regulate the indoor tanning bed industry. In Utah, legislation was enacted that requires all minors under 18 to be accompanied by a parent, updated warning signs and tighter facility permit requirements. Legislation is still pending in many other states.

Uniting Communities Across the Aisle: Congressional Families Cancer Prevention Program

This year the Congressional Families Cancer Prevention Program celebrated its twentieth anniversary, highlighting this milestone during our 19th Annual Congressional Families Action for Cancer Awareness Awards luncheon, held in September. Founded in 1991 by Congresswoman Doris Matsui (Calif.), the program educates Congressional spouses and family members about the latest information in risk reduction, screening and primary prevention and provides them the tools to carry this lifesaving information back to their districts. Under the leadership of Executive Director Lisa McGovern, the program continues to include op-eds, public service announcements (PSAs), newsletters and participation in awareness-raising events.

Since 1993, the Congressional Families Cancer Prevention Program has presented awards to individuals who have made extraordinary contributions in raising awareness about cancer prevention and early detection. With Paula Zahn acting as Mistress of Ceremonies, we had the honor of bestowing awards to several inspiring recipients. Congressional spouse Freda Manzullo, Congresswoman Lois Capps, seven-time Emmy winning journalist Steve Andrews and his daughter, ESPN broadcaster and Emmy winner Erin Andrews, joined our distinguished roster of award winners.

Both sides of the aisle joined together to celebrate the work that the program has achieved during the past year – and throughout the past two decades. While honoring our 2011 award winners, we thank Congressional families for their service throughout the year. The annual luncheon inspires them to recommit to the fight against cancer by highlighting the stories of exceptional individuals.



Digital Media – Expanding the Prevent Cancer Community

There has been a lot written about digital or social media. Many feel it is the province of the young, but others who would not classify themselves as “young” have wholeheartedly embraced social media in one way or another. The Prevent Cancer Foundation has worked diligently on digital media (our website, micro-sites for the Prevent Cancer Foundation 5K, Dialogue for Action and Screening Saves Lives) and via our social media platforms (Facebook, Twitter, LinkedIn and, most recently, Pinterest) not to accumulate millions of followers, but to make genuine connections with people from around the country and around the world. Our goals remain the same: to expand the Prevent Cancer community by reaching out to new audiences with health and wellness information that will help them **Stop Cancer Before It Starts!**

SOCIAL MEDIA OUTREACH AND PARTNERSHIPS

Engaging and connecting with people and discovering new ways to partner continues to reap benefits for the Foundation. Over the last year, social media partnerships have yielded both friend-raising and fundraising results:

SCREENING SAVES NATIONAL CHALLENGE – Launched in 2010, the Colorectal Cancer Screening Saves National Challenge invites community organizations to submit colorectal cancer awareness and screening proposals each March. These organizations are encouraged to utilize social media as well as traditional media to energize local supporters to vote online during the Challenge. Participation in the National Challenge and the Screening Saves community forum continues to grow, doubling the number of participants in this year’s Challenge.

DAVID TUTERA FACEBOOK CONTEST FOR THE 2012 ANNUAL SPRING GALA – Host of WeTV’s “My Fair Wedding,” celebrity party planner and Prevent Cancer board member David Tutera generously hosted a competition on his Facebook page. David invited his more than 129,000 Facebook fans to donate to the Prevent Cancer Foundation Annual Spring Gala. Donors were entered to win one of three of his signature watches. During the month-long appeal, \$2,300 was raised.

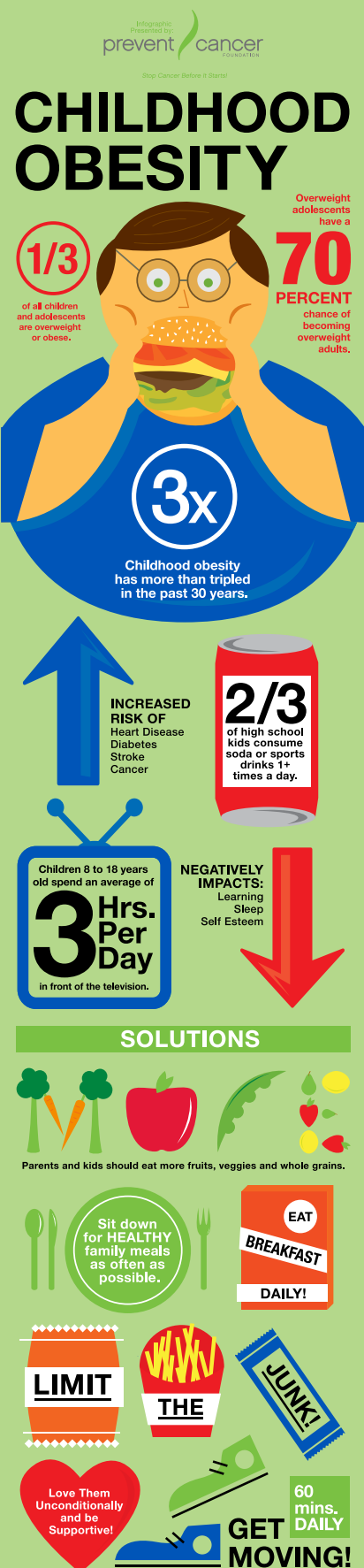
DAILYFEATS – The Foundation partnered with the Cigna Foundation and DailyFeats, a website which encourages people to make healthy choices for which they earn points. DailyFeats members could donate those points to the Foundation and Cigna matched the points with a cash donation.

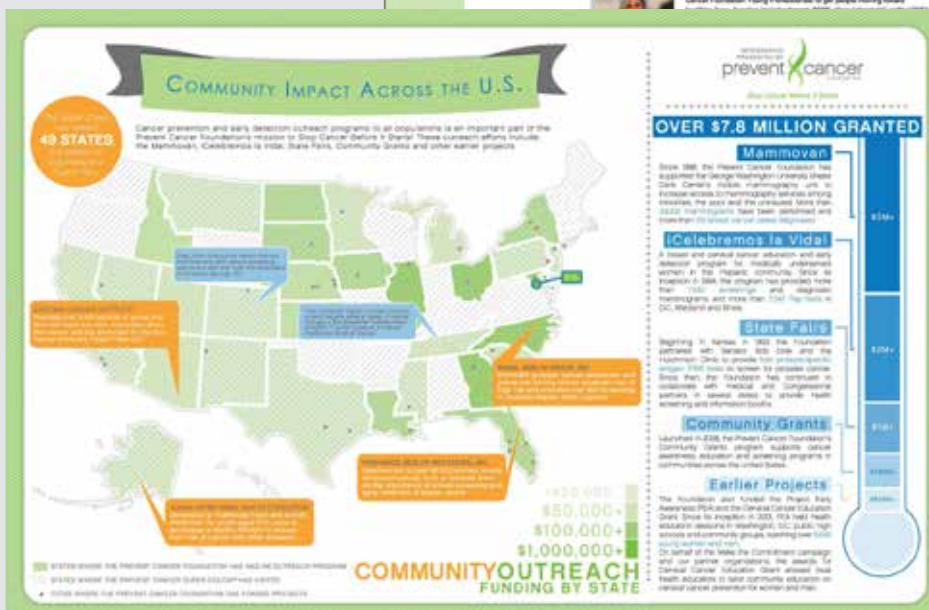
The Foundation also partnered with Daily Feats on the **Stop Cancer Before It Starts! Challenge** that encouraged members to eat healthy, exercise daily and not smoke. The **Sun Safety Challenge** encouraged members to get in the habit of keeping their skin healthy and safe in the summer and all throughout the year.

WHAT’S NEXT?

In the rapidly changing landscape of digital media, the Prevent Cancer Foundation is vigilant in spotting new ways to effectively reach people interested in cancer prevention, early detection and health and wellness information. The next wave of change is already underway.

At the time of this article, there are 30,000 health-related apps for smart phones and tablets. Optimizing the Foundation’s web content for mobile platforms is a priority and the development of cancer prevention and early detection mobile apps is already in discussion. The Foundation sees these technological advances as opportunities to reach more people in whatever manner they prefer to receive lifesaving information.





The Foundation uses its many microsites and engaging web assets to reach people in a variety of ways.

PREVENT CANCER FOUNDATION 5K

Following a torrential downpour on Friday, the sun was shining on the 3rd Annual Prevent Cancer Foundation 5K held on Saturday, September 24, 2011. Four hundred runners, walkers, strollers and pets came together at West Potomac Park in Washington D.C. to show their commitment to a healthy lifestyle and cancer prevention!



Team Prostate Captain Dr. Karen Sfanos was a Prevent Cancer Foundation funded research fellow! Karen assembled a team of fellow researchers, family and friends for this year's 5K.



This year's event had several generations of participants devoted to cancer prevention and early detection. Event director Linda Chastain poses with her family.





Team "Friends For Prevention" stops to pose for a photo.



KK's Cancer Kickers took first place in the team fundraising category, with an impressive total of \$10,000. Local radio personality Chilli Amar emceed the event and energetically warmed-up the enthusiastic crowd. With the support of corporate sponsors, teams and individual fundraisers, the 2011 5K raised over \$92,000 (doubling the previous year's total) in support of cancer prevention research, education and community outreach programs.

Top fundraising team KK's Cancer Kickers with President and Founder Carolyn Aldigé and event emcee Chilli Amar.

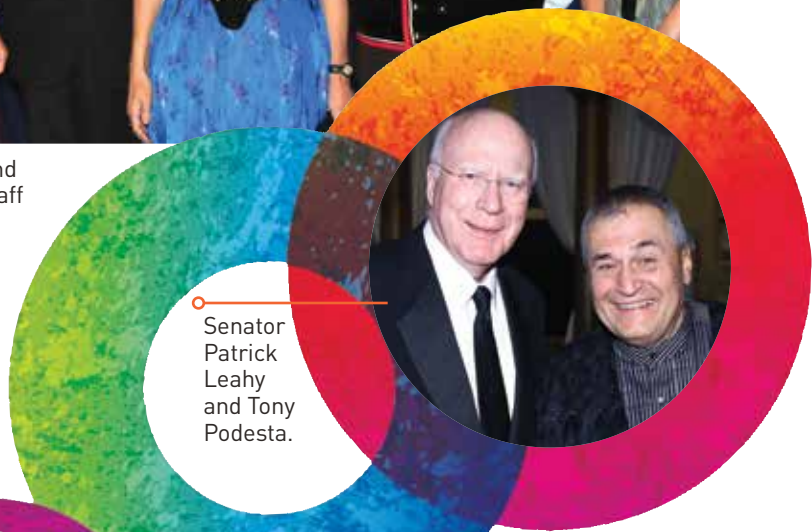




Honorary Patrons His Excellency the Ambassador of Switzerland Manuel Sager and Mrs. Christine Sager with Swiss Embassy staff dressed in traditional garb.

Annual Spring Gala Dazzles Once Again at Modern+Majestic=Switzerland

Since its inception in 1994, the Annual Spring Gala remains the much anticipated signature special event of the Prevent Cancer Foundation. Over the past 18 years, the Foundation's community of supporters has gathered at the Gala, contributing over \$21 million in support of cancer prevention and early detection research and programs.



Senator Patrick Leahy and Tony Podesta.



Grant Allen and Katherine Kennedy.



From L to R: Ambassador of Monaco Gilles Noghès, Ellen Noghès, David Short, Marie Royce, Rep. Ed Royce.



Julie Delgado.



Prevent Cancer Foundation President and Founder Carolyn Aldigé, Cancer Champion Award Recipient the Honorable Mike Oxley, Gala Chair Joann Piccolo.



On March 9, Prevent Cancer Foundation board member, celebrity event planner and host of WeTV’s “My Fair Wedding” David Tutera (who donates a large portion of his services), waved his magic wand and transformed the National Building Museum into a spectacular Swiss landscape, accented by lighted acrylic tables, soaring sculptures and contemporary vases filled with white calla lilies and hydrangea. Nearly 100 candlelit tables were swathed in shades of azure and silver featuring shimmering crystal accent pieces as the Foundation celebrated “Modern+Majestic=Switzerland”, under the patronage of Ambassador Manuel and Mrs. Christine Sager. Greeted by Swiss Embassy staff dressed in traditional dress, 900 guests were entertained by the beautiful and lingering melody of Swiss alphorns.

Joann Piccolo served as the gala chair and honored guests included former Ohio Congressman and lung cancer survivor Mike Oxley, our 2012 Cancer Champion. Oxley is a long-time advocate for cancer research, prevention, improved treatment and survivorship issues.

Local WUSA 9 TV personality and board member Andrea Roane acted as Mistress of Ceremonies of the “Lighting the Way to Prevention” pledge drive, introducing cancer survivor and vocalist Julie Delgado. Julie has been touring the country singing and inspiring all who hear her with the story of her courageous battle against breast cancer.

The 2012 Annual Spring Gala raised over \$1.4 million through sponsorships, donations and our inaugural “Bidding for Good” silent auction. We are grateful to our individual donors and corporate supporters who enabled the Foundation to reach such an ambitious goal while keeping overhead to a low 16 percent.



Prevent Cancer Foundation Board Member Kathryn West with two Gala guests.



Ashley Taylor, Dinner Committee Chair Nicole Rodgers and Aimee Steel

Beneficiary Events

Each year, the Prevent Cancer Foundation is the beneficiary of funds raised by individuals or groups who have hosted a fundraiser on our behalf. Here is just a sampling of some of the events hosted during fiscal year 2012.



1.



2.



3.



5.



4.



6.

1. Casino Night: Downey, Calif.—A mother and daughter visit the Prevent Cancer Foundation table at the Oncology Institute’s Casino Night. Attendees were treated to a catered event with casino games and raffle prizes. The May 18 event raised \$1,000.

2. Casino Night: Downey, Calif.—A volunteer distributes Prevent Cancer Foundation information and Buddy Bracelets at the Oncology Institute’s Casino Night. Cancer patients were invited to enter a photography contest, with the winning photographs displayed during the event.

3. Matt Morris Painting: Santa Clara, Calif.—Matt Morris, a local architect and amateur painter, was asked to display his artwork at Inferno Real Estate during the month of March. With a daughter who had melanoma and a mother-in-law who died of ovarian cancer, Matt decided to donate all the proceeds from the art sold to the Prevent Cancer Foundation and raised \$600 in an auction of his artwork.

4. Crossfit: Evanston, Ill.—Crossfit participants take a breather after raising \$13,500 for cancer prevention. Two local gyms, Crossfit Shoreside and Crossfit E-Town of Evanston, Ill. came together for the first ever “Crossfit Against Cancer”.

5. Crossfit: Evanston, Ill.—Matt Pogodzinski M.D., organizer of “Crossfit,” takes a well-earned rest after completing his WOD (workout of the day): 3,001 squat thrusts in 5 hours and 4 minutes. Not only do Crossfitters believe in an active lifestyle but also a healthy one.

6. Crossfit: Evanston, Ill.—Peter Cummins completes his WOD (workout of the day) in honor of his son Nicholas who was successfully treated for two brain tumors while he was a child. Peter was the highest individual fundraiser at Crossfit, raising over \$5,000.

7. SDA 2012: Chevy Chase, Md.—Mike Uyama and co-organizers of Speed Demos Archive’s “Awesome Games Done Quick 2012” put down their controllers for a picture. The marathon lasted nonstop for six straight days in January—members played games during every hour of the day.

8. SDA 2012—Speed Demos Archive, “Awesome Games Done Quick 2012” participants celebrate raising \$143,000 for cancer prevention and early detection. Eighty gamers from 28 countries participated in this round-the-clock marathon in Maryland that was streamed live online.



7.



8.

9. SDA 2012—Speed Demos Archive participants cheer on the gamers as they finish their game in record time. During the peak viewership, there were over 12,000 online viewers.

10. Skierpalooza: Orlando, Fla.—Organizers and volunteers Chris Sullivan, Matt Rini, Jim Stanley, Brett Hargrave and Chris Rossi (L. to R.) take a quick break before participants arrive for Skierpalooza. Participants were treated to a day of test rides on all of Radar Water-ski's new equipment.

11. Holden Cup: Alexandria, Va.—The Holden Cup Golf Tournament was held on August 8-9, 2011 at Belle Haven Country Club. Since 2007 the event has raised over \$500,000 for the Prevent Cancer Foundation. Proceeds from the Holden Cup support individual research grants in breast cancer prevention and early detection.

12. Skierpalooza: Orlando, Fla.—Matt Rini and Brett Hargrave take a break from demo-ing Radar Water-Skis and test out their new Radar tube. When not on the water, it makes a comfortable place to sit down in the shade! Held on April 28, Skierpalooza raised over \$5,000.

13. Fantasy Football: Washington D.C.—The Prevent Cancer Foundation Fantasy Football League was founded by Headley Butler, Roger Edwards, Victor Maddux and Stuart Prince during the 2011 NFL season. In creating this league, the four wanted to promote cancer prevention and early detection awareness while combining their passion for football as a way to raise money. The league raised over \$9,000 for the Prevent Cancer Foundation.

Host a Fundraiser

The Prevent Cancer Foundation benefits from many unique local fundraising events, held across the country. No event is too large or too small—every dollar raised makes a difference and helps save lives! For more information on hosting your own fundraiser, please visit www.preventcancer.org or contact our Special Event Coordinator at 703-519-2119.



9.



10.



11.



12.



13.



Three Bedrooms and Two Baths: A Brick Ranch with a Lifesaving Legacy



SAMUEL D. HALL, JR. **2011 PREVENTION LEGACY PARTNER**

Sam Hall was always a survivor.

In 1975, he survived the death of his beloved mother after a long fight with breast cancer.

In 1981, he survived for 12 hours in a lifeboat in the Atlantic Ocean. His sailboat, "Satan's Mercy," a 58-foot cruising yacht he was sailing from Massachusetts to Bermuda, blew a hole through its hull, forcing him to abandon his boat for safety.

In 1990, Sam survived a diagnosis of colorectal cancer. Detected during a routine colorectal screening exam, Sam's treatment was swift and successful. He knew that early detection and prompt treatment were what saved his life.

"Early detection and prevention are so important. That's what sets the Prevent Cancer Foundation apart from all the other cancer charities – and it's why in 1988 I began donating to the Prevent Cancer Foundation. I know what it's like to face a cancer diagnosis – and how painful it is to watch someone you love die of the disease."

Throughout his life, Sam understood that the key to his survival was education – both at sea and when it came to his health. As a result, he wanted to ensure his legacy would provide others with the same opportunities for survival. That's why in 2004, after nearly 24 years of donating small monthly gifts of 5-15 dollars, Sam decided to amend the deed to his home by making the Prevent Cancer Foundation the property owner upon his death. His other assets were left to family and other charities close to his heart.

"I decided to donate my house to the Foundation so that I could continue funding cancer prevention research and education that will help others," Hall said.

In December 2011, the Foundation was notified that Sam had died. His thoughtfulness and generosity – a three bedroom, two bath brick ranch home—resulted in a lifesaving legacy of over \$170,000. This incredible contribution will be used to help ensure that countless others are given the same opportunities for survival – life saving screenings and education. Beyond Sam's life, his gift continues to give to many future generations.

**"I decided to
donate my house
to the Foundation
so that I could
continue funding
cancer prevention
research and
education that will
help others."**

– Samuel D. Hall, Jr.

Carrying the Torch for Cancer Prevention and Early Detection

JEREMY "JERRY" HARDY FITZGERALD

Jerry FitzGerald has always believed in the power of prevention.

At just 10 years old, she lost her father to stomach and esophageal cancer. As she stood outside his hospital room, she listened as the doctor murmured, "I wish there was something we could have done." Years later, she remembered these words as she watched her mother, grandmother and aunt suffer through the devastating disease of breast cancer.

In 1995, she would remember these words once again during a routine mammogram when her radiologist said to her, "You need to contact an oncologist immediately." She did and she also reached out to her friend Carolyn Aldigé for advice.

Thankfully, Jerry's cancer was discovered early - and she has been cancer free for over 17 years. Watching so many loved ones suffer through cancer has taught her the importance of early detection. It is this same wisdom that she has conveyed to her two daughters who, as a result of their family history, are also at risk of developing breast cancer. She strongly believes that, "everyone needs to own their own health by taking advantage of screening. It is one of the best ways we can help combat this devastating disease."

Jerry's life experiences, along with a strong desire to educate others about the importance of prevention, led to her active involvement with the Prevent Cancer Foundation. Today - 18 years later - she is an esteemed member of the Foundation's Board of Directors. Her strong belief in the Foundation's mission has resulted in her raising substantial sums for cancer prevention and early detection programs. She has also demonstrated her commitment and leadership by acting as a surrogate for her dear friend Carolyn Aldigé, the Foundation's Founder and President, sharing her story with neighbors, friends and volunteers.

Over the years, the words uttered by her father's doctor have helped to spur her lifelong mission to be an advocate for prevention and early detection. Jerry equates her mission to the eradication of small pox. She says, "because of the development of vaccines, we no longer have to worry about a cure for small pox. The same should be true for cancer... all we need to do is prevent it."

"Everyone needs to own their own health by taking advantage of screening. It is one of the best ways we can help combat this devastating disease."

– Jerry FitzGerald



Partnership in Prevention... Making an Investment in the Fight Against Cancer

Through the generous support of individuals like you, over the last 27 years the Prevent Cancer Foundation has invested more than \$130 million toward our mission of saving lives through cancer prevention and early detection. With you and donors like you who recognize the importance of cancer prevention, the Foundation touches the lives of individuals in need nationwide through lifesaving education and community outreach programs, advocacy initiatives and innovative cancer prevention research.

We value your partnership and hope you will continue to invest in our vision to Stop Cancer Before it Starts! Whether you choose to make a direct donation, contribute through your workplace giving program or make a planned gift, we appreciate your charitable support.

DIRECT DONATION AND HONOR/MEMORIAL GIFTS

Make a one-time or monthly gift online, by phone or through the mail. You may also make your gift in honor or in memory of a loved one, colleague or friend.

WORKPLACE GIVING

Employees participating in their company's Workplace Giving Campaign, Combined Federal Campaign or the United Way have raised more than \$7.5 million over the last 10 years in support of the Foundation's programs in cancer prevention and early detection. Many companies match or double charitable donations made by their employees through matching gift programs.

PLANNED GIVING AND ESTATE PLANNING

Planned gifts are an essential part of the Prevent Cancer Foundation's funding and present the opportunity for tax benefits and income for the donor. There is a wide variety of gift vehicles to consider, ranging from a bequest in your will to various types of charitable trusts. Because planned giving involves your assets, philanthropic goals and family needs, we suggest you consult your attorney or financial planner before considering a planned gift.

For more information on how you can make a difference in the fight against cancer, please contact the Foundation's Development Department at 703-519-2119 or email us at Info@PreventCancer.org.



Prevent Cancer Foundation
1600 Duke Street
Suite 500
Alexandria, VA 22314

Phone: 703-519-2119
Fax: 703-836-4413
Toll-Free: 800-227-2732
www.preventcancer.org





Board Members

Carolyn R. Aldigé
Marcia Myers Carlucci
Ron Doornink
Alan P. Dye
Jeremy H. FitzGerald
Kimberly Fritts
Joyce H. Gates
Gordon (Don) Hutchins, Jr.
Ann G. Kulze, M.D.
Brock R. Landry
Scott McIntyre
Jon Mittelhauser
James. L. Mulshine, M.D.
George Swygert
David Tutera
Margaret G. Vanderhye
Kathryn West, RN

Emeritus Directors

David S. Alberts, M.D.
Cartherine P. Bennett
Margaret M. Bush
Elmer E. Huerta, M.D., M.P.H.
Alexine Clement Jackson

Sustaining Directors

Betty C. Alewine
Michael F. Brewer
Karen D. Fuller
Joel Jankowsky
Marcelle Leahy
Gary Lytle
Jean Perin
Andrea Roane
Virginia Weil

Prevent Cancer Foundation Medical Advisory Board

JASJIT S. AHLUWALIA, M.D., MPH, MS

Executive Director, Center for Health Equity,
University of Minnesota Masonic Cancer Center

DAVID S. ALBERTS, M.D.

Director, University of Arizona Cancer Center

BART BARLOGIE, M.D., PH.D.

Director, Myeloma Institute for Research and
Therapy, University of Arkansas for Medical
Sciences

PAUL A. BUNN JR., M.D.

Professor, James Dudley Chair in Cancer
Research, University of Colorado Denver School
of Medicine, Division of Medical Oncology

DONALD S. COFFEY, PH.D.

Professor, Urology, Oncology, Pathology,
Pharmacology Johns Hopkins University School
of Medicine

KENNETH H. COWAN, M.D., PH.D.

Director, Eppley Cancer Center, University of
Nebraska Medical Center

RICCARDO DALLA-FAVERA, M.D.

Director, Herbert Irving Comprehensive Cancer
Center, Columbia University

WILLIAM DALTON, M.D., PH.D.

Chief Executive Officer, H. Lee Moffitt Cancer
Center & Research Institute

ANDREW DANNENBERG, M.D.

Professor of Medicine and Surgery, Weill Medical
College of Cornell University

ROBERT W. DAY, M.D., PH.D.

President and Director Emeritus; Member, Public
Health Sciences; Professor, Health Services,
School of Public Health and Community
Medicine, University of Washington, Fred
Hutchinson Cancer Research Center

RAYMOND M. DUBOIS, M.D., PH.D.

Provost and Executive Vice President for
Academic Affairs, M.D. Anderson Cancer Center,
University of Texas

H. SHELTON EARP III, M.D.

Director, Lineberger Comprehensive Cancer
Center, University of North Carolina

STEPHEN B. EDGE, M.D.

Chair, Breast and Soft Tissue Surgery,
Roswell Park Cancer Institute, University of
Buffalo

MARGARET FOTI, PH.D.

Chief Executive Officer, American Association for
Cancer Research

HAROLD P. FREEMAN, M.D.

Medical Director, Ralph Lauren Center for Cancer
Care and Prevention

PATRICIA A. GANZ, M. D.

Professor, UCLA Schools of Medicine and Public
Health, Director, Division of Cancer Prevention
& Control Research, Jonsson Comprehensive
Cancer Center, UCLA

DAVID M. GERSHENSON, M.D.

Professor and Chair, Department of Gynecologic
Oncology, University of Texas MD Anderson
Cancer Center

EDWARD GIOVANNUCCI, M.D., SC.D.

Associate Professor of Nutrition and
Epidemiology, Harvard School of Public Health

ROBERT S. GOLD, PH.D., DRP.H.

FAAHB Dean, College of Health and Human
Performance, University of Maryland

GARY E. GOODMAN, M.D., M.S.

Staff Oncologist/ Joint Member Swedish Cancer
Institute, Fred Hutchinson Cancer Research
Center

ANNA R. GIULIANO, PH.D.

Professor and Director of Cancer Prevention,
H. Lee Moffitt Cancer Center & Research
Institute

STANLEY R. HAMILTON, M.D.

Professor and Head, Division of Pathology and
Laboratory Medicine, The University of Texas MD
Anderson Cancer Center

CLAUDIA HENSCHKE, PH.D., M.D., FCCP

Clinical Professor of Radiology, Mount Sinai
Medical Center

WAUN KI HONG, M.D.

Division Head, Cancer Medicine, Professor,
Thoracic/Head and Neck Medical Oncology

ELMER E. HUERTA, M.D, M.P.H.

Director, Cancer Preventorium, Washington
Cancer Institute, Washington Hospital Center

NORA A. JANJAN, M.D.

Professor, University of Texas, MD Anderson

LOVELL A. JONES, PH.D.

Director, Center for Health Equity & Evaluation
Research, University of Houston/University of
Texas MD Anderson Cancer Center

JON F. KERNER, PH.D.

Canadian Partnership Against Cancer

ANN G. KULZE, M.D.

Just Wellness, LLC

BERNARD LEVIN, M.D.

Vice President for Cancer Prevention Emeritus,
University of Texas, MD Anderson

MARC E. LIPPMAN, M.D.

Kathleen & Stanley Glasser Professor Chairman,
Department of Medicine, University of Miami,
Leonard M. Miller School of Medicine

SCOTT M. LIPPMANN, M.D.

Director, University of California,
San Diego, Moores Cancer Center

PATRICK J. LOEHRER, SR., M.D.

Director, Indiana University Melvin and Bren
Simon Cancer Center

JOHN L. MARSHALL, M.D.

Associate Professor of Medicine, Chief, Division
of Hematology and Oncology, Lombardi
Comprehensive Cancer Center, Georgetown
University Hospital

ELENA MARTINEZ, M.P.H., PH.D.

Professor of Family and Preventive Medicine,
University of California, San Diego, Moores
Cancer Center

HAROLD L. MOSES, M.D.

Director Emeritus, Vanderbilt-Ingram
Comprehensive Cancer Center

LARRY NORTON, M.D.

Deputy Physician in Chief for Breast Cancer
Programs, Memorial Sloan Kettering Cancer
Center

GILBERT S. OMENN, M.D., PH.D.

Professor of Internal Medicine, Human Genetics
and Public Health, University of Michigan

RICHARD G. PESTELL, M.D., PH.D., F.R.A.C.P.

Director, Thomas Jefferson Medical College,
Kimmel Cancer Center

DARRELL S. RIGEL, M.D.

Clinical Professor, NYU Medical Center, NYU
School of Medicine & NYU Hospital Centers

JOHN C. RUCKDESCHEL, M.D.

Medical Director of Oncology Program and
Services, Intermountain Healthcare

DAVID SCHOTTENFELD, M.D., M.SC.

John G. Searle Emeritus Professor of
Epidemiology and Internal Medicine, University
of Michigan School of Public Health Emeritus
Professor

PAUL TALALAY, M.D.

John Jacob Abel Distinguished Service Professor,
Department of Pharmacology and Molecular
Sciences Johns Hopkins University School of
Medicine

ANDREW WEIL, M.D.

University of Arizona, Program in Integrative
Medicine

GEORGE J. WEINER, M.D.

Director, Holden Comprehensive Cancer Center
at the University of Iowa

RICHARD WENDER, M.D.

Professor and Chair, Family Medicine, Kimmel
Cancer Center, Thomas Jefferson University
Hospital

PETRA WILDER-SMITH, DDS, PH.D.

Director of Dental Programs, University of
California, Irvine, The Beckman Laser Institute
and Medical Clinic

WALTER C. WILLETT, PH.D.

Chairman, Department of Nutrition, Harvard
School of Public Health

STEPHEN G. YANG, M.D., FACS, FCCP

Chief, Division of Thoracic Surgery, Associate
Professor, Surgery and Oncology, Johns Hopkins
Medical Institute

ROBERT C. YOUNG, M.D.

Chancellor, Fox Chase Cancer Center

Scientific Review Panel

BERNARD LEVIN, M.D. (CO-CHAIR)

Professor (Emeritus), MD Anderson Cancer Center, University of Texas

JAMES L. MULSHINE, M.D. (CO-CHAIR)

Associate Provost for Research, Department of Internal Medicine, Rush University Medical Center

CHRIS ALBANESE, PH.D.

Associate Professor, Departments of Oncology and Pathology, Director, Preclinical Imaging Research Laboratory, Lombardi Comprehensive Cancer Center, Georgetown University Medical Center

JANET AUDRAIN-MCGOVERN, PH.D.

Associate Professor, Department of Psychiatry, University of Pennsylvania

DAVID BERRIGAN, PH.D. MPH

Office of the Associate Director, Applied Research Program, Division of Cancer Control and Population Sciences, National Cancer Institute

REBECCA BLANCHARD, PH.D.

Senior Project Leader, Oncology Project Leadership, Merck & Co., Inc.

ROBERT CLARKE, PH.D., D.SC.

Interim Director, Biomedical Graduate Research Organization, Professor, Department of Oncology, Georgetown University Medical Center / Lombardi Comprehensive Cancer Center

JENNIFER ENG-WONG, M.D., M.P.H.

Associate Medical Director, Product Development-Oncology, Genentech

LEENA HILAKIVI-CLARKE, PH.D.

Professor of Oncology, Georgetown University

LOUISE R. HOWE, PH.D.

Associate Professor, Department of Cell & Developmental Biology, Weill Cornell Medical College

And

Head, Mammary Tumorigenesis Laboratory, Strang Cancer Research Laboratory

STEPHEN D. HURSTING, PH.D., M.P.H.

Professor and McKean-Love Chair, Department of Human Ecology, University of Texas at Austin and, Professor of Carcinogenesis, MD Anderson Cancer Center, University of Texas

MARY BETH MARTIN, PH.D.

Professor, Departments of Oncology, and Biochemistry and Molecular Biology, Georgetown University Medical Center / Lombardi Comprehensive Cancer Center

MARC D. SCHWARTZ, PH.D.

Professor of Oncology, Director, Cancer Control, Co-Director, Jess and Mildred Fisher Center for Familial Cancer Research, Georgetown University Medical Center / Lombardi Comprehensive Cancer Center

PETER G. SHIELDS, M.D.

Deputy Director, Comprehensive Care Center, Professor, College of Medicine, The Ohio State University Medical Center

KENNETH D. TEW, PH.D., D.SC.

John C. West Chair in Cancer Research, Chairman Dept. of Cell and Molecular Pharmacology and Experimental Therapeutics, Medical University of South Carolina

DANYELLE M. TOWNSEND, PH.D.

Assistant Professor, Department of Pharmaceutical and Biomedical Sciences, Medical University of South Carolina

BRUCE J. TROCK, PH.D.

Director, Division of Epidemiology, Brady Urological Institute, Professor of Urology, Epidemiology, Oncology, and, Environmental Health Sciences, Johns Hopkins University School of Medicine

KENT E. VRANA, PH.D.

Elliot S. Vesell Professor and Chair, Department of Pharmacology, Penn State College of Medicine

ZHEN ZHANG, PH.D.

Associate Professor, Department of Pathology and Oncology, Johns Hopkins Medical Institutions

"I am and forever will be grateful to the Prevent Cancer Foundation. Thanks to the Foundation fellowship, my research will advance the science of cancer prevention."

**— Dallas Donohoe, Ph.D.,
Foundation Fellowship Recipient,
Fall 2008**



Prevention Partners


Prevention Partners are special friends of Prevent Cancer Foundation who have graciously provided for the foundation by naming it as a beneficiary in their will, charitable gift annuity, charitable trust, individual retirement account or life insurance policy, or have made a gift of real estate or tangible personal property.

Prevention Partners

Mr. and Mrs. James G. Aldigé III
 Mrs. Betty C. Alewine
 Mr. Dewey Vincent Allen*
 Mrs. Florence Atkins*
 Mr. Forrest R. Ayers*
 Miss. Helen U. Baker*
 Ms. Margaret Bartel*
 Mrs. Lee Luper Bartruff*
 Ms. Reba Cora Bean*
 Mr. Anton J. Befort*
 Ms. Alice Elizabeth Behnke*
 Ms. Elizabeth M. Beylon*
 Mrs. Blanche Berg
 Charles Bessey, M.D.*
 Ms. Elizabeth R. Black*
 Mr. and Mrs. Stanley Blakuts
 Mr. Rex A. Bohling
 Mrs. Ned Bord*
 Ms. Lucille Bowman*
 Mrs. Rosa Braun*
 Mrs. Lucille Brents*
 Ms. Artie Mae Brooks*
 Ms. Jenny Brown*
 Victoria Nicolau Busulegas, M.D.*
 Ms. Ettorina Cardella*
 Ms. Ida T. Cavoli*
 Mrs. Elizabeth Chisholm
 Ms. Victoria Conchie*
 Mrs. Isabel H. Cosgrove*
 Mrs. Jennie R. Craib*
 Mr. Richard L. Davies*
 Mrs. Idella Church Dean*
 Mrs. Katharine S. DeLashmutt*
 Miss Leslie C. Devereaux
 Ms. Irene Diefenbach*
 Mrs. Sally Dollinger*
 Mrs. Virginia S. Doolittle*
 Mrs. Myrtle F. Draffen*
 Mrs. Sylvia N. Ehrlich*
 Mr. Jerome L. Ellenberg*
 Miss. Grace M. Elliott*
 Ms. A. Irene Emswiler*
 Miss Mollie R. Evin*
 Mr. Edward Joseph Fabish*
 Ms. Barbara Falltrick*
 Ms. Anita M. Farmer*
 Mr. James Farrell
 Ms. Claire Fearnside*
 Ms. Teresa Felton*
 Ms. Estelle Filomio*

Mr. Howard E. Foltz*
 Mr. Marion Frank*
 Ms. Berta Mae Gallagher*
 Mr. Lewis T. Gardiner*
 Mr. Harold N. Gilbert*
 Mrs. Esther Glendinning*
 Ms. Susan L. Goroll*
 Ms. Patricia O. Greenwell*
 Mr. James T. Grossmann
 Mrs. Helen Hall*
 Mr. Samuel D. Hall, Jr.*
 Ms. Elizabeth Handley*
 Ms. J. Harriet Hanson*
 Ms. Myrtle Hara*
 Ms. Sarah A. Hayat*
 Ms. Goldie Herrmann*
 Mrs. Ruth Hoare*
 Ms. Maria M. Hoemann*
 Mrs. Deborah Houlihan
 Mrs. Alexine Clement Jackson
 Ms. Stella Jacobs*
 Ms. Elizabeth C. Jenne*
 Ms. Hazel Johnson*
 Mr. Nahum Joslyn*
 Mrs. Leslie Dedmond Karr
 Mr. Joseph F. Kelly, Jr.
 Mrs. Lenora M. Kerschner*
 Ms. Virginia Kintz*
 Lt. Col. and Mrs. William Konze
 Ms. Rose Koury*
 Ms. Harriet R. Kutik*
 Mr. Emil G. Kramer*
 Mr. Herbert Kramer*
 Ms. Lorraine D. Lader*
 Mrs. Floy Lehman*
 Ms. Jennie C.C. Li*
 Mr. and Mrs. Hal Litzius*
 Mr. Norman S. McCallister*
 Mrs. Virginia N. McConchie*
 Mr. Stanley L. Mackey*
 Mr. Gordon L. Mann, Jr.*
 Mr. Benjamin Marks*
 Mrs. Mary E. Mathis*
 Ms. Barbara Mazur*
 Ms. Mariam H. Mason*
 Mr. Robert F. McKinley*
 Ms. Margaret F.L. McKnight*
 Ms. Ezilda T. Michel*
 Ms. Irene B. Miller*
 Mr. and Mrs. Jon E. Mittelhauser
 Ms. Mary Helen Moorhead*
 Ms. Marabelle Nape*
 Ms. Claire Nemser*

Mr. and Mrs. Donald R. Neubrecht*
 Mrs. Elizabeth H. Newberry*
 Mr. Bernard Niewoehner*
 Mrs. Anna Papa*
 Ms. Rose Pasternak*
 Mrs. Catherine Bond Patterson*
 Ms. Lonetta C. Patterson*
 Mr. and Mrs. Thomas Perez*
 Mrs. Josephine Ann Perrella*
 Ms. Patricia A. Peterson*
 Ms. Sylvia Petters*
 Mr. Richard J. Phillips*
 Mr. John J. Pikulski*
 Mrs. Myrtle Potter*
 Mr. John Prigee*
 Mrs. Nancy Gray Pyne
 Mrs. Josephine Rich*
 Ms. Joan L. Rochelle*
 Mrs. Zelda B. Rockwell*
 Ms. Arlene Rosen*
 Mr. Richard T. Russell, Jr.
 Mrs. Ida I. Schaefer*
 Dr. and Mrs. Daryl R. Schaller
 Ms. Marian A. Schwab*
 Mr. Glenn E. Selix*
 Mrs. Theresa R. Shapiro*
 Ms. Dorothy Singleton*
 Mr. Elias Skaaren*
 Mrs. Elizabeth Cornell Smith*
 Ms. Elvera W. Smith*
 Ms. Claire Strub*
 Ms. Genevieve Suss*
 Ms. Mildred Swartzbaugh*
 Ms. Ruth Thayer*
 Mr. Overton Arnold Thompson
 Mrs. Ione M. Uphoff*
 Mr. Nicholaas Van Reisen
 Ms. Colleen Mae Veith*
 Dr. Jan P. Vette*
 Ms. Margaret Vorous
 Ms. Rose Helen Walker*
 Mrs. Margery L. Weil*
 Mr. Richard Weiss*
 Ms. Sarah H. West*
 Mrs. Laura S. Williams
 Ms. Victoria Winters*
 Mrs. Margaret A. Wilson*
 Mr. James B. Wittrock
 Mr. Murlyn V. Wolstenholm*
 Ms. Edith M. Zimmerman*
 Ms. Bernice Zuber*
 *Deceased



"I have been involved with the Congressional Families Cancer Prevention program since it was established under the direction of (then) Congressional Club President—now Congresswoman—Doris Matsui. It is a bipartisan, nonpolitical way for spouses to join forces on something important to us all: preventing cancer. The program has easy, ready to use tools to reach out to our home community in Washington state and share information on how to reduce the risk of cancer. I am certain that, together, we are making a difference and I joined the Executive Council to help keep the program moving ahead!"

– Suzie Dicks, spouse of Representative Norm Dicks, Washington

**Lifetime Friends
(\$25,000 over
their lifetime)**

INDIVIDUALS

Mr. and Mrs. James G. Aldigé III
 Dr. and Mrs. Ralph W. Alewine III
 Estate of Dewey V. Allen
 The Honorable and Mrs. Hushang Ansary
 Alfred Bartel and Margaret Bartel 1992 Revocable Trust
 The Cecile and Fred Bartman Foundation
 Ms. Catherine P. Bennett and Mr. Fred Frailey
 Mr. and Mrs. John D. Beveridge
 Elizabeth R. Black Revocable Trust
 Bohling 1994 Trust
 Mr. and Mrs. David G. Bradley
 Estate of Rosa Braun
 Mr. and Mrs. Michael F. Brewer
 Estate of Lee Lupher Burtruff
 Mr. and Mrs. Marvin P. Bush
 Mr. Landon H. Butler
 The Honorable Frank C. Carlucci and Mrs. Marcia Myers Carlucci
 Estate of Ida T. Cavoli
 Estate of Martha F. Cromley
 Miss Leslie C. Devereaux/ Leslie C. Devereaux Foundation
 Ms. Concetta DiLeo
 Mr. and Mrs. Ron Doornink/ Doornink Family Charitable Fund
 The Max and Victoria Dreyfus Foundation
 Mr. and Mrs. Alan P. Dye
 Ms. Linda K. Eyestone
 Estate of Edward Joseph Fabish
 Estate of Anita M. Farmer
 Estate of Claire Fearnside
 Mrs. Andrea S. Ferris
 Mr. and Mrs. Drew Figdor
 Mr. and Mrs. Peter J. FitzGerald, Sr.
 Estate of Howard E. Foltz
 Mr. and Mrs. Craig Fuller
 Mr. and Mrs. Rafe Furst
 Helen M. Galvin Charitable Trust
 Lewis T. Gardiner Estate
 Mr. Thomas Gardner
 Mr. and Mrs. Bruce A. Gates
 Mr. and Mrs. Joseph Gleich
 Mr. and Mrs. Phil Gordon

Estate of Patricia O. Greenwell
 Estate of Samuel D. Hall, Jr.
 Estate of J. Harriet Hanson
 Estate of Mr. and Mrs. Van Buren Hansford
 Estate of Sarah Hayat
 Mr. Phillip Hellmuth, Jr.
 Mr. and Mrs. Charles Holden III
 Mr and Mrs. Terry Houlihan
 Mr. and Mrs. Gordon Hutchins, Jr.
 Mr. and Mrs. Joel Jankowsky
 Estate of Hazel M. Johnson
 Mr. Anthony P. Kavanagh
 Virginia J. Kintz Charitable Remainder Trust
 Lt. Col. and Mrs. William Konze
 Charles A. Kraenzle Colon Cancer Foundation
 Estate of Harriet R. Kutik
 Mr. and Mrs. Brock R. Landry
 Ms. Tirzah A. Lassahn
 The Lebensfeld Foundation
 Estate of Hal Litzius
 Stanley Mackey Revocable Trust
 Ms. Kathryn A. MacLane and Mr. Dan Alcorn
 Estate of Gordon L. Mann, Jr.
 George Preston Marshall Foundation
 Mr. and Mrs. Michael McGettigan
 Mr. and Mrs. Mark D. McKinnon
 Mr. and Mrs. Michael R. Megargee
 Mr. and Mrs. Richard Meyer III
 Mr. and Mrs. Kenneth Moelis
 Mr. Chris Moneymaker
 Dr. and Mrs. George Moore
 The Neubrecht Family Trust
 Sylvan and Ann Oestreicher Foundation
 Ms. Jean Perin
 Mrs. Marjorie F. Perin
 Estate of Josephine Ann Perrella
 Peterson Family Foundation
 Estate of Sylvia Petters
 Mr. Dennis Phillips
 The Lynn R. & Karl E. Prickett Fund
 Mrs. Eben W. Pyne
 Mr. and Mrs. Alfred C. Quenneville
 Joan L. Rochelle Revocable Trust
 Catherine B. Reynolds Foundation

Mr. and Mrs. James A. Rogers
 Marian A. Schwab Revocable Trust
 Estate of Theresa R. Shapiro
 Estate of Dorothy Singleton
 The Honorable and Mrs. Kenneth W. Starr
 Dr. Paul G. Stern
 Mrs. Rachel Stern
 Mr. and Mrs. Kenneth E. Stinson
 Estate of Betty C. Stich
 Mrs. Marianne Stohlman
 Mr. and Mrs. Mark A. Taylor
 Estate of Overton Arnold Thompson
 Mr. David Tuter and Mr. Ryan Jurica
 Estate of Ione M. Uphoff
 Mr. and Mrs. Robert Vanderhye
 Estate of Jan P. Vette
 Mrs. Sharon Borg Wall
 Ms. Irene E. Walters
 Mr. Paul Wasicka
 Estate of Margery L. Weil
 Mr. Robert S. Weil
 Ms. Virginia A. Weil
 Mr. and Mrs. Anthony Welters
 Estate of Sara H. West
 Estate of Margaret A. Wilson
 Mr. James B. Wittrock
 Estate of Murlyn V. Wolstenholm
 Mr. Robert H. Zeps
 Estate of Edith M. Zimmerman
 Estate of Bernice Zuber

ORGANIZATIONS

1-800 Contacts, Inc.
 Abbott Laboratories
 Accenture LLP
 Active Network
 Advanced Medical Technology Association
 Aetna Foundation, Inc.
 Aetna Health Plans
 Aflac
 Agouron Pharmaceuticals
 Akin, Gump, Strauss, Hauer & Feld, L.L.P.
 Alaska Poker Association
 Alberto Culver USA, Inc.
 Alcalde & Fay
 Allied Domecq Spirits & Wine USA, Inc.
 Allstate Insurance Company
 America's Charities
 American Airlines, Inc.
 American Beverage Association
 American Cancer Society

American College of Radiology
 American Council for Excellence & Opportunity
 American Express Foundation Employee Gift Matching
 American Gaming Association
 American Gastroenterological Association
 American Insurance Association
 American Society of Clinical Oncology
 American-Italian Cancer Foundation
 AmeriChoice Health Services, Inc.
 AmerisourceBergen
 Amgen
 Amgen Foundation
 The Lance Armstrong Foundation
 Astellas/OSI
 AstraZeneca LP
 AT&T
 AT&T Services Inc.
 Aventis Pharmaceuticals
 Bank of America
 Bayer HealthCare LLC
 Beckman Coulter
 The Beer Institute
 The Boeing Company
 Black Entertainment Television
 BlueCross BlueShield Association
 BlueCross BlueShield of Nebraska
 Boston Scientific
 The Brink's Company
 Bristol-Myers Squibb Oncology
 C-Change
 Caesar's Entertainment, Inc.
 The Capital Group Companies, Inc.
 Cardinal Health
 Cardon Healthcare Network
 Cars4Charities
 CBS Corporation
 Chevron
 Christus Health
 Cingular Wireless
 Citigroup Inc.
 Clark-Winchcole Foundation
 Coalition of Cancer Cooperative Groups, Inc.
 The Coca-Cola Company
 College of American Pathologists
 Comcast Corporation
 Consumer Electronics Association

Corman Construction, Inc.
 Council of Fashion Designers of America
 Covington & Burling
 Cruise Industry Charitable Foundation Inc
 CTIA-The Wireless Association
 Daimler
 Dell Computer Corporation
 Dell Direct Giving
 Deloitte & Touche LLP
 Diageo North America, Inc.
 Direct TV Incorporated
 Discovery Communications
 The Walt Disney Company
 Disney Worldwide Services, Inc.
 Dittus Communications, Inc.
 Dominion Resources Services, Inc.
 Duke Energy Corporation
 Edison Electric Institute
 Edison International
 Eisai Inc.
 EMD Serono, Inc.
 Entergy Corporation
 Ernst & Young LLP
 Exact Sciences Corporation
 ExxonMobil Corporation
 FedEx Corporation
 Florida Power & Light Company
 The Focus Foundation
 Ford Motor Company
 Fox Group
 FoxKiser
 Freddie Mac
 Friedman, Billings, Ramsey, & Co. Charitable Foundation, Inc.
 Full Tilt Services Corporation
 Fund to Prevent Cervical Cancer
 Game Time Marketing, LLC
 GE Company
 Genentech, Inc.
 General Dynamics Corporation
 General Motors Foundation
 Genomic Health, Inc.
 The George Washington University Breast Care Center
 Georgetown University
 Georgia Department of Education School & Community Nutrition
 GlaxoSmithKline
 Graphix Zone Inc.
 Grocery Manufacturers of America, Inc.
 H. J. Heinz Company
 The Gloria Heyison Breast Cancer Foundation
 Honeywell International, Inc.



Hunton & Williams
 IBM Employee Services Center
 International Physician Networks LLC
 Jack Horner Communications, Inc.
 Johnson & Johnson Family of Companies
 Ketchum/The Washington Group
 Kiewit Companies Foundation
 Peter Kiewit Sons', Inc.
 Koch Industries, Inc.
 KPMG LLP
 Mark Krueger & Associates, Inc.
 Ladies Charity Classic of the National Capital Area
 Lilly USA, LLC
 Living In Pink, Inc.
 Lockheed Martin Corporation
 Vincent T. Lombardi Cancer Center
 Mac Heist
 Mayfair Partners, L.P. Boston Market
 The Mel Karmazin Foundation, Inc.
 Merck & Co., Inc.
 Microsoft Corporation
 Middle-Atlantic Section of the PGA
 Millennium Pharmaceuticals, Inc.
 Mortgage Insurance Companies of America
 Motion Picture Association of America, Inc.
 Motorola
 The NASDAQ Stock Market, Inc.
 National Association of Broadcasters
 National Association of Chain Drug Stores
 National Association of Convenience Stores
 National Cable & Telecommunications Association
 National Dialogue On Cancer Foundation
 National Race for the Cure
 NBC Universal
 New York Life Insurance Company
 News Corporation Ltd./FOX
 Nortel Networks
 Novartis Corp
 Opus East, L.L.C.
 OSI Pharmaceuticals
 Palms Casino Hotel
 Patton Boggs LLP
 Personal Care Products Council
 The Pfizer Foundation

Pfizer Inc
 Pharmaceutical Research and Manufacturers of America
 Poker Players Alliance
 Pokerstars
 PricewaterhouseCoopers, LLP
 Progress Energy
 The Prostate Cancer Foundation
 Quest Diagnostics
 Quinn Gillespie & Associates, LLC
 Qwest Communications
 Recording Industry Association of America
 Reuters
 Roche
 Rocksprings Foundation
 Rockwell Automation
 Ron Ruffennach Golf Classic
 Salt River Project
 Sanofi
 SBC Foundation
 SBC Telecommunications, Inc.
 Schering-Plough Corporation
 Schering-Plough Foundation, Inc.
 Schering-Plough Legislative Resources L.L.C.
 Searle & Co.
 Shell Oil Company
 Siemens Corporation
 SIFMA
 Southern Company
 Speed Demos Archive
 Sprint Nextel Corporation
 Stohman Volkswagen Inc.
 Sun Safety Alliance
 Sunoco, Inc.
 Susan G. Komen for the Cure
 Taste Of The South
 TE Connectivity Ltd.
 Time Warner, Inc.
 Toyota Motor North America, Inc.
 Tribune Company
 TXU Business Services
 Tyco International
 Union Pacific Corporation
 United Airlines
 United Parcel Service
 United States Telecom Association
 United Way Crusade of Mercy
 United Way of Southeastern Pennsylvania
 United Way of the National Capital Area
 United We Care
 Universal Music Group
 US Oncology

Vanderbilt University and Medical Center
 Verizon Communications
 Verizon Wireless
 Viacom International, Inc.
 VISA U.S.A., Inc.
 Vodafone U.S. Foundation
 Wachovia Bank
 Wachovia Securities LLC
 Walmart Stores, Inc. and Sam's Club
 Walmart/Sam's Club Foundation
 Warner Music Group
 Washington Council Ernst & Young
 WEST*GROUP Management LLC
 Wilmer Cutler Pickering Hale and Dorr LLP
 Wine and Spirits Wholesalers of America
 World Reach, Inc.
 Wyeth

Memorial and Honor Gifts

These gifts are special ways to honor friends, loved ones and colleagues. Honor gifts often mark a special occasion like Mother's or Father's Day, bar/bat mitzvahs or a birthday. Many couples also designate the Prevent Cancer Foundation as a recipient of contributions in lieu of wedding or shower gifts. In return, the Foundation sends a card acknowledging these thoughtful donations.

Honor Gifts

Carolyn R. Aldigé
 Ryan and Craig Ansara
 Mary Ashmore McGee
 Aunt Kari "BIG K"
 Marion K. Baker
 Norene Ball
 Norm A. Barton
 Cathie Bennett
 Betty Billups
 Rebecca Blumenfeld
 Karen Brown
 Martha Anne Burrows
 Hailey Burton

Marcia Carlucci
 Jerry Cates
 Valerie Charles
 Mary Sue Clark
 Johanna Cole
 Judy and Bill Cox
 Jeanne Egan
 Maria Fisher
 Jeremy H. FitzGerald
 Augusto D. Forbes
 Paula Gills
 Evalyn Hardey
 Brian Hosier
 Olivia Immerman
 Jan and Dad
 Marcena Kenney
 Raquel Kogen
 Landolfi Family
 Brock & Diane Landry
 Anthony Lapinto
 America Moreira LaPointe
 John W. Leonard
 Tamarra Luzzotto
 Yvonne McIntrye
 Louise, Paul and Jessie McClung
 Wendy McMillian
 June A. Megill
 Carole Morales
 Carmen J. Nadal
 Elizabeth O'Neill Ayers
 Thomas Pemberton
 David Quilhot
 Colonel and Mrs. Craig Reiner
 Edward Richardson
 Richard Ross
 Amrinder Sandhu
 Sienna and Dan's Wedding
 Thomas Stanton Sr.
 Kimberly Taylor
 Martin C. Thomas
 David Tutera
 Josephine Twist
 John A. Wallace
 Michael Washo
 Lynn Whitley
 Steve Wincek
 Mary Ellen Wise
 Michael Zelener

Memorial Gifts

Ida Alho
 Robert C. Allen M.D.
 Diane V. Anderson
 Igor Andreev
 John P. Ashmore
 Elizabeth M. Ayers
 Candice Backus
 Don Baroni
 Margaret Belanus
 Mae Benack
 Sam Berman
 Nanna M. Bettleyon
 Carol Betz

Mrs. John Bogdan
 Mary Ann Boyd
 A.A. Bregman-Rubenstein
 Darlene Denise Brooks
 Louise Brown
 Marilyn Bruce
 Shirley Bruer
 Chris A. Burke
 John Bushe
 Gloria Carpenter
 Gray Castle
 Dennis Chastain
 Ray Clark
 Claudia "CC"
 Donna Coffman
 Bernice Cohen
 Mary Conley
 Charles Conover
 Luther Cook
 Mary Cooley
 Sara E. Cooper
 Dick Couchot
 Marjorie S. Crump
 Dad, Gary, Uncle
 Robert Dalzell
 Manuel DaSilva
 Joyce Davis
 Tom Davis
 Darlene Denise
 Blaise deSibour
 Walt Disney
 Rose Domenica
 Larry E. Duenow
 Arnold Durecki
 James Durkin
 Noreen Dyckowshi
 Edith
 Holland Esther
 Denise Fagan
 Drew Farrell
 Angela Felton
 Tali Fickle
 Rusty Flack
 Bonnie Forray
 Woody O. Fowler
 Joseph Gallo
 Gilbert
 Marie Graveline
 Jodie Haberman
 Barbara Hahne
 Tom Hatfield
 Les Hartan
 Michael Haydel
 Roland Haydel, Jr.
 Roland Haydel, Sr.
 Linda Harris
 Anne Henry
 Curt Heyeck
 Waldemar H. Hoffmann
 Ethel Skellie Horton
 Sarah Howard
 Paul Huchel
 Debbie Hudson
 Patricia Redding Hunt

Senior Director of Policy and Advocacy Lisa Hughes with 2012 International Development and Education Awardee Dr. Mateus Kambale Sahani from the DRC at the American Society of Clinical Oncology's annual meeting in Chicago.

Barbara Husbands
 Larry Husman
 Edward Ingram
 Marguerite B. Jackson
 John B. Johnson
 Jean Jones
 Charles "Chuck" David Jones
 Joseph Joseph
 Katherine
 Doris P. Kennedy
 Tinnakorn Khroopan
 Trudy King
 Ruth F. Klein
 Roy Kline
 Walt Knott
 Raquel Kogen
 J. T. Landrum
 Thomas Lemerand
 Janice Lemmond
 Stan Lemmond
 Arthur Lerner
 Sally Libbey
 Patsy Liebeskind
 Karl-Erik Liljegen
 Laurene Loo
 Phil Lussier
 Barbara Lytle
 Kenneth R. Mabrey
 Alan Maisel
 Lynda Malvey
 Adolfo Manalo
 Sue Manes
 Kay Martin
 Gilbert C. McAdams
 Louise, Paul and Jessie McClung
 Therese McPherson
 Donna Mercurio
 Rev. David Merrick
 Rose Micro
 Wilhelmina Morris
 Joyce Mortier
 Charles J. Murphy
 Ray Murphy
 Philip Nancarrow
 Elizabeth Naylon
 Paul Nunley
 Eileen O'Donnell
 "Our Mothers"
 Herman Pavia
 Lisa D. Peeples
 Gloria Perez
 Molly Peters
 John Phelps
 Sasha Premoli
 Frank Ragland
 Susan Rainey
 Charles Reynolds
 Gladys Riachi
 Edward P. Richardson
 Nancy Rotenberg
 Leotine and Etienne Rouse
 Warren Rule

Patricia Ryan
 Onnalee Saunders
 Cecil L. Scarborough
 Robert Scheevel
 Laura Schmitz
 Kermit Schoch
 Peggy Schofield
 Harlan Schrabner
 Doris Schwartz
 Kenneth Schwarz
 Amy Schyman
 Frank Searcy
 Roger Serigny
 Diane B. SESCO
 Vern and Karen Shaw
 Michael Shure
 Krystyna M. Smardz
 Stephanie Smith
 John Statzer
 Carol Stocking
 Beth Ann Suzor
 Kathy Swisshaw
 Joyce Terry
 Martin C. Thomas
 Constance Trask
 Josephine Twist
 Frank Utz
 Wilhelm Vaclavik
 Wynand van der Merwe
 Liza Vaughn
 Fritz Weinschenk
 Bill Weller, Sr.
 Helen Wheeler
 Kathleen Wheeler
 Leita M. Williams
 Anne Gail Wruble
 Melvyn Youkilis
 Donna L. Young
 Gerard Zirakian

The Doll Society (\$25,000 and above)

Sir William Richard Shaboe Doll, a distinguished British physician and epidemiologist, was the first scientist to establish the link between smoking and lung cancer. This singular discovery led scientists to identify a genetic mutation which is caused by chemicals found in tobacco smoke.

Individuals

\$100,000 AND ABOVE
 Estate of Samuel D. Hall, Jr.

\$50,000-\$99,999
 Miss Leslie C. Devereaux/
 The Richard C. Devereaux
 Foundation
 Estate of Colleen Mae Veith

\$25,000-\$49,999
 The Honorable Frank C.
 Carlucci and Mrs. Marcia
 Myers Carlucci
 Mr. and Mrs. Ron Doornink/
 Doornink Family
 Charitable Fund
 Mr. and Mrs. Charles
 Holden III

Organizations

\$100,000 AND ABOVE
 America's Charities
 Amgen
 Bristol-Myers Squibb
 Oncology
 Caesar's Entertainment Inc.
 Eisai Inc.
 Genentech, Inc.
 GlaxoSmithKline
 Novartis Pharmaceuticals
 Corp.
 Pfizer Inc
 Providence Title Company
 LLC

\$50,000-\$99,999
 Abbott Laboratories
 FedEx Corporation
 Lilly USA, LLC
 Lincoln Financial Group®
 National Association of
 Broadcasters
 Pharmaceutical Research
 and Manufacturers of
 America
 Susan G. Komen
 for the Cure

\$25,000-\$49,999
 A&E Television Networks
 Bank of America
 EMD Serono, Inc.
 Living In Pink, Inc.
 Lockheed Martin
 Millennium
 Pharmaceuticals, Inc.
 Nestlé
 Palms Casino Hotel
 Southern Company
 Sylvan and Ann Oestreicher
 Foundation, Inc.
 TE Connectivity Ltd.
 Tyco International Ltd.
 Wal-Mart Stores, Inc.

The Burkitt Society (\$10,000 to \$24,999)

Denis Parsons Burkitt was the pioneering British surgeon who first discovered that some cancers could be cured with chemotherapy. He is also known for associating a low-fiber diet with many of the serious diseases in Western society.

INDIVIDUALS

Dr. and Mrs. Ralph W.
 Alewine III
 Mr. and Mrs. Michael F.
 Brewer
 Mr. William G. Cox
 Mr. and Mrs. Bruce A. Gates
 Estate of Helen Hall
 Estate of Sarah A. Hayat
 Mr. Leonard M. Horner
 Mrs. Leslie D. Karr
 Mr. and Mrs. Brock R.
 Landry
 Ms. Jean Perin
 Mrs. Cecile B. Tauzin
 Estate of Victoria Winters

ORGANIZATIONS

ABB Inc.
 ACE American Insurance
 Company
 Air Transport Association of
 America, Inc.
 Aircraft Owners & Pilots
 Association
 Akin, Gump, Strauss, Hauer
 & Feld, L.L.P.
 Allstate Insurance Company
 AmerisourceBergen
 APCO Worldwide
 Astellas Pharma
 AT&T
 Battelle
 Bayer HealthCare LLC
 Capitol Counsel LLC
 Celgene Corporation
 CenterPoint Energy, Inc.
 CIGNA
 Direction du Tourisme et
 des Congrès
 Duke Energy Corporation
 Edison Electric Institute
 Emergent BioSolutions
 Endo Pharmaceuticals
 Estate of Victoria Winters

Exact Sciences
 Fidelity Charitable Gift Fund
 Ford Motor Company
 Foundation for Better
 Education
 Hunton & Williams
 IBM Employee Services
 Center
 International Association for
 the Study of Lung Cancer
 Morphotek
 Mortier Invitational
 New York Life Insurance
 Company
 Nuclear Energy Institute
 Palmetto Peloton Project
 Inc.
 Peacock and Company Inc.
 PwC
 Salt River Project
 Sampson and Company Inc.
 Sanofi
 Shadowlight Pictures, LLC
 The Boeing Company
 Time Warner Cable
 U.S. Chamber of Commerce
 United Parcel Service
 Zurich American Insurance
 Company

The Peto Society (\$5,000 to \$9,999)

Sir Richard Peto was a distinguished physician and epidemiologist whose 1981 research at Oxford University with Sir William Doll connected diet and cancer. This work, along with that of other investigators, confirmed that 35 percent of certain cancers may be prevented by eating a healthy diet.

INDIVIDUALS

Mr. Landon H. Butler
 Mr. Shawn Duncan
 Ms. Jeremy H. FitzGerald
 Mr. and Mrs. Peter J.
 FitzGerald, Sr.
 Mr. Francis Marion Turner
 IV and Ms. Kimberley D.
 Fritts
 Mr. and Mrs. Fred Hassan
 Ms. Maria Ho
 Estate of Maria M.
 Hoemann
 Mr. and Mrs. Don Hutchins, Jr.

Mr. and Mrs. Joel Jankowsky
Mr. Anthony P. Kavanagh
Ms. Barbara A. Kennedy
Mr. Mark H. Robinson
Mrs. Jeanne W. Ruesch/
Ruesch Family Foundation
Mr. Richard Stohman
Mr. and Mrs. Thomas Tauke

ORGANIZATIONS

AARP
Alston & Bird, LLP
American Cancer Society
Cancer Action Network
Inc.
American Society for
Radiation Oncology
American Society of Clinical
Oncology
American Trucking
Associations, Inc.
Ameriprise Financial
Annual Giving Campaign
B.K. Miller Company, Inc.
Bessemer Trust
The Brink's Company
Cardinal Bank Community
Fund
Caremark Rx, Inc.
CBS Radio
The Cecile & Fred Bartman
Foundation
Chicago Mercantile
Exchange
Churchill Downs
Comcast Corporation
Connie Frank Foundation
The Connors Foundation
CW Enterprises
Dell Computer Corporation
Denny Miller Associates,
Inc.
Enterix, Inc./Quest
Diagnostics
Ethicon Endo-Surgery
Exxon Mobil Corporation
The Financial Services
Roundtable
Fincannon and Associates,
Inc.
Georgetown University
Lombardi Cancer Center
Given Imaging, Inc.
Hoffman Family Trust
Honeywell International,
Inc.
Irene B. Miller Foundation
Itron
Katherine Kennedy/KBPK
Foundation
KORE Infrastructure, LLC
Middle-Atlantic Section of
the PGA
Myriad Genetics, Inc.
Network For Good
New York Life Foundation

Otsuka America
Pharmaceutical, Inc.
PNC Bank
Rockwell Automation
Rosenfeld Family Charitable
Foundation Trust
Rush-Presbyterian - St.
Lukes Medical Center
Siemens Corporation
Square One Distribution,
Inc.
Susan G. Komen for the
Cure Advocacy Alliance
The Nickles Group LLC
The Travelers Indemnity
Company
United Airlines
United States Steel
Corporation
Van Scoyoc Associates
Vanguard Charitable
Endowment Program
Venable Foundation, Inc.
Wine and Spirits
Wholesalers of America

The Devereaux Society (\$1,000 to \$4,999)

In 1993, Leslie
Cameron Devereaux
established the
Richard C. Devereaux
Outstanding Young
Investigator Award,
which sponsors
promising lung cancer
prevention research, in
memory of her father.

INDIVIDUALS

Ms. Dorothy J. Abernathy
Mr. and Mrs. James G.
Aldigé III
Ms. Carol Barton
Mr. and Mrs. Richard
Baruch
Mr. and Mrs. John D.
Beveridge
Mr. Charles R. Black
Mr. Richard F. Blackburn
Mr. and Mrs. James E.
Boland
Mr. Harvey R. Boltwood
Mrs. William H. Brakefield
Mr. Matthew Bronczek
Ms. Joy Chadwick
Mr. Lewis Cheney
Mrs. Margaret Clerc
Mr. and Mrs. James K.
Clifton
Estate of Jennie R. Craib
Ms. Christina Crow

Dr. P. J. Wakelyn and Ms.
Suzanne C. DeFrancis
Ms. Concetta DiLeo
Paul C. Domson, M.D.
Mr. and Mrs. Alan P. Dye
Stephen B. Edge, M.D.
Mr. and Mrs. Samuel M.
Ellsworth
Mr. Michael Gallagher
Mr. Anthony Garcia
Mr. Sam Geduldig
Ms. Noa Gimelli
Mr. and Mrs. Matthew
Glantz
Mr. Ed Henry
Ms. Louise Hilsen
Mr. and Mrs. Michael W.
Hopke
Mr. and Mrs. Leo S. Horey III
Ms. Anne Horner
Mr. and Mrs. Terry J.
Houlihan
Mr. and Mrs. Charles S.
Houser
Mr. and Mrs. John W.
Howard, Jr.
Mr. and Mrs. William B.
Howard
Ms. Tammi Jaffe
Mr. Robert Juba
Mr. and Mrs. William H.
Kassoy
Mr. David Kennedy
Mr. Frederick T. Kieferle, Jr.
Mr. and Mrs. William
Kilberg
Mr. Adam Krupa
Ann Kulze, M.D.
Mr. and Mrs. Thomas M.
Lawler, Jr.
Mr. Andy Liang
Mr. and Mrs. Christopher
Lindsay
Ms. Maria Llitas
Mr. and Mrs. Gerald E. Long
Mr. and Mrs. Gary R. Lytle
Mr. Cliff Madison
Ms. Miriam H. Mason
Mr. and Mrs. John C. Mauk
Ms. Yvonne A. McIntyre
Mr. Michael McLary
Ms. Janet McUlsky
Mr. and Mrs. Michael R.
Megargee
Mr. Peter V. Meyer
Mr. and Mrs. Jeffrey S.
Mezera
Mr. Doug Mitchell
Mr. and Mrs. Jon E.
Mittelhauser
Ms. Karen Moreno
Dr. James L. Mulshine and
Dr. Pamela Mulshine
Janne J. Nappi, Ph.D.
Mr. and Mrs. Arthur H. Nash
Mr. Henry Nassau
Mr. and Mrs. Stuart B.
Nibley

Mr. David Orr
Mr. and Mrs. Elvis S. Oxley
The Honorable and Mrs.
Michael G. Oxley
Ms. Joann A. Piccolo and
Mr. Timothy Carmody
Mr. Anthony Podesta
Mr. and Mrs. Alfred C.
Quenneville
Ms. Anne B. Rector
Mr. and Mrs. Lance J. Rice
Mr. and Mrs. Jim L.
Ritzenberg
Ms. Andrea R. Roane and
Mr. Michael Skehan
Mr. and Mrs. Richard F.
Rodgers
Mr. Jeff A. Rothwell, Jr.
Mr. and Mrs. Frederick W.
Sachs, Jr.
Mr. John Savercool
Ms. Deborah Scott
Mr. Win Sheridan
Mr. and Mrs. Mark Shores
Ms. Patricia Sparrell
Mr. and Mrs. Ted Stettinius
Ms. Barbara Sutton
Mr. George Swygert and Ms.
Lori Jenkins
Dr. Paul Talalay and Dr.
Pamela Talalay
Mr. Harry L. Thomas, Jr.
Mr. and Mrs. J. Timothy
Thompson
Mrs. Annie S. Totah
Mr. Carl M. Trevisan
Mr. Mike Uyama
Mr. and Mrs. Hannes F.
van Wagenberg
Mr. and Mrs. Robert A.
Vanderhuy
Mr. and Mrs. G. Duane Vieth
Ms. Virginia A. Weil
David C. Weintritt, M.D.
Mr. and Mrs. Donald W.
Westfall
Mr. Anthony Westreich
Wetmore Family Foundation
Mr. and Mrs. Earle C.
Williams
Mr. and Mrs. Steve Wingate
Dr. and Mrs. Robert C.
Young

ORGANIZATIONS

Alexandria Toyota
Ameriprise Financial
Employee Gift Matching
Program
Arlene Rosen Revocable
Trust
Baker & Hostetler, LLP
Batteries Inc.
Biotechnology Industry
Organization
Blackburn and Company
Foundation
BNSF Railway Company
Burke & Herbert Bank

Burke Family Foundation
Cars4Charities
Chevron
Chubb & Son
CIGNA Foundation
City of Seattle Community
Foundations
The Community Foundation
for the National Capital
Region
Dana Point Community
Cycling Foundation
Dell Direct Giving
The Walt Disney Company
Dominion Resources
Services, Inc.
The Drescher Foundation
Epigenomics, Inc.
Eric Gleacher Foundation
FitzGerald Properties
Force 3 Foundation, INC.
Friends of John Tanner
GHC Associates, Inc.
Gioia Limited Partnership
Great American
Restaurants
Hallmark Iron Works, Inc.
Harbitter Family Foundation
Herget Family Charitable
Foundation
HSBC Philanthropic
Programs
J. McLaughlin
Jade Productions LLC
John MacBrian Inc.
Mark Krueger & Associates,
Inc.
Legacy
Lindsay Management
Company LLC
Marathon Oil Corporation
Marilyn Hirsch and Gary
Gordon Charitable Fund
Mattoon and Associates,
LLC
McBee Strategic
Consulting, LLC
New Republican Majority
Fund
New York City Transit
Authority
Nina & Ivan Selin Family
Foundation
NRA-Institute for
Legislative Action
Pacific Gas & Electric
Company
Pacific Sports
Panther Expedited Services,
Inc.
Patton Boggs LLP
Personal Care Products
Council
Peterson Family Foundation
Pioneer Roofing Systems,
Inc.
The Prostate Cancer
Foundation
Reico



President and Founder Carolyn Aldigé participated in the “Women: Drivers of Prevention” panel at the DLDwomen’s Conference in Munich. Moderated by a prominent German talk show host, the panel discussed why education, research and advances in prevention seem to have been led by women.

Republic Services, Inc
Resurrection Health Care
S.L. Hinson Associates
Schwab Charitable Fund
Service Distributing Inc.
Showdown Monkey LLC
SIFMA
Simpson Development Inc.
Spray of Sunshine
Steele Family Foundation
Steele Foundations LLC
Sunoco, Inc.
Superior Iron Works, Inc.
The Chalfont Foundation Inc.
The Christian Giving Fund
The Viro Fund
TMA List Brokerage & Management, Inc.
Top 10 Wellness & Fitness Secrets, Inc.
Trowbridge Steel Co., Inc.
TRUIST
United Way of Southeastern Pennsylvania
United Way of the National Capital Area
Vanderbilt University Medical Center
Washington Capitals
Waterborne Environmental
Wells Fargo Advisors, LLC
Wells Fargo Insurance Services USA, Inc.
World Bank Community Connections Fund

The Richardson Society (\$500 to \$999)

Edward Perry Richardson was the father of Carolyn R. Aldigé, founder and president of the Prevent Cancer Foundation. His struggle against cancer inspired her to establish the organization and his memory has sustained the Foundation’s mission.

INDIVIDUALS

Onyekachi Akoma
Ms. Geraldine Allen
Ms. Dorine Altman
Mr. and Mrs. Rollin M. Bell III
The Honorable Douglas F. Bennett
Mr. Leonard Bickwit, Jr.

Elizabeth R. Black Revocable Trust
The Honorable and Mrs. David N. Bonior
Mr. John E. Bonitt
Ms. Jan Bresch
Mrs. Suzanne S. Brock
Ms. Sashani Brown
Mr. and Mrs. Erle Burke
Mr. and Mrs. Marvin P. Bush
Calvert & Sally Simmons Foundation
Ms. Lauren Choi
Mr. Ray Cole
Ms. Jamie N. Cooper
Ms. Laura Cordero
Ms. Kelly Cornelis
Mr. Michael Cowell
Mr. and Mrs. Wallace L. Darneille
Mr. Dick Davis
Mr. Thomas A. Davis
Ms. Ivey Day
Ms. Helene De Carne Carnavalet
Mr. Henry de Vegvar
Mr. and Mrs. E. K. Delph
Mr. Doug Deluca
Mr. Richard Dillon
Mr. and Mrs. Edward E. Dyson
Ms. Susan Fisher
Ms. Kerry Flynn
Mr. and Mrs. Peter G. Gartlan
Mr. and Mrs. Charles A. Gately
Mr. and Mrs. Neil J. Goetzman
Mr. Roy Goldberg
Mr. and Mrs. J. Warren Gorrell, Jr.
Mr. Philip Greer
Mr. and Mrs. Joseph M. Guiffre
Ms. Mavis Gustafson
Mr. Mitchell S. Hailey
Ms. Lynne S. Hambleton
Mr. Howard Harrington
Mr. Thomas P. Hasbrouck
Ms. Stacy Hawkins
Ms. Martha F. Hay
Mr. George Heilmann
Mrs. Tichakorn K. Hill
Mr. Gregory G. Hoffmann
Mr. Tony Hogie
Mr. Ronald Holmes
Chuan Chang Hsu
Mr. and Mrs. Harry Hunter
Mr. and Mrs. John P. Hynes, Jr.
Mr. Ronald Johnson
Mr. Jeffrey A. Joseph
Ms. Kristine P. Kamenstein
Ms. Kristen Kenney
Lt. Col. and Mrs. William Konze

Ms. Norma Krayem
Ms. Cecelia Lance
Mr. and Mrs. Mathew Lapinski
Mr. Michael Lessie
Ms. Joanne Levy
Mr. Robert Logan
Mr. Brian Lowell
Ms. Renée Mahdavi
Dr. Joseph W. Marin
Mr. Darren Martian
Mr. Patrick McCarthy
Mr. and Mrs. Michael McGettigan
Mr. Richard Melnick Hyrije Nelovic
Ms. Amy E. Newell
Mr. Braden Overman
Ms. Emily Parolek
Mr. Tito Piccolo
Lt. Col. and Mrs. Joseph T. Pisciotta, Ret.
Mr. Marvin Price
Mr. and Mrs. Peter B. Reilly
Mr. William Reimer
Ms. Virginia Robertson
Mr. and Mrs. Seth D. Rosen
Mr. James M. Rugolo
Ms. Patricia Ryan
Mr. Joseph Salsbury
Mr. and Mrs. Thomas J. Sargeant
Mr. Michael and Mrs. Carolyn Schmidt
Mr. Donald Schlagel
Ms. Jamie Schneiderman
Ms. Eileen Sexton
Mr. and Mrs. Charles S. Shaw, Jr.
Mr. Stephen Sieke
Mr. and Mrs. Calvert Simmons
Mr. John Smith
Mrs. Sharon Stark
Mr. Bradley Starnes
Ms. Katherine Steele
Mr. Jeffrey Singer
Ms. Stephanie Smith
Ms. Barbara A. Stohlmán
Dr. and Ms. Richard T. Stone
Mr. and Mrs. Richard J. Tarplin
Mr. Thom Terranova
Mr. and Mrs. Robert J. Test
Mr. Richard C. Thomas
Ms. Maria Veloso Koenig
Ms. Sarah Venuto and Mrs. Nelson Perez
Mr. Joe F. Viar, Jr. and Ms. Bonnie Christ
Ms. Roxanne Weigel
Mr. Ross Whitaker
Mr. Nathaniel Williams
Ms. Terese T. Williams
Mr. James B. Wittrock
Mr. Norman Woods

Mr. Thomas Zamadics
Mr. Hong Zeng

ORGANIZATIONS

Alliance Data
AT&T United Way Employee Giving Campaign
Carpet Value Center, LTD.
Clarke & Sampson, Inc.
DC Smart Singles Social Club
Debby Hudson Colon Cancer Foundation Inc.
Dominion Employee Giving Program
Findlay Family Foundation
Jamison & Sullivan Inc.
Johnson & Johnson Family of Companies
JUSTGIVE
Lake Tahoe Visitors Authority, INC.
Landon Butler & Company
MarcParc
Microsoft Matching Gifts Program
PNC Foundation Matching Gift Program
Red Acquisition Warehouse, LLC
Shulman, Rogers, Gandal, Pordy & Ecker, P.A.
Stay Classy Productions, Inc.
United Way California Capital Region
United Way of the Capital Region
United Way of the Greater Triangle
Velocity Five Sports Restaurant
VOCMED, INC.
Wells Fargo Community Support Campaign
Wyoming Seminary College Preparatory School

Mr. Vincent Allen
Mr. Nathan Althouse
Mr. Paul Amrich
Mr. Alan Bailey
Mr. and Mrs. Charles W. Ballou
Ms. Deborah Beal
Mr. and Mrs. Douglas N. Beatty
Ms. Teri Bebachick
Ms. Rhonda Bell
Ms. Ruth Bell
Mr. Richard W. Berman
Ms. Alexis Berrios
Dr. Frank P. Billingsley II
Mr. Lamarcus Bonier
Mr. Jon Bonney
Mr. Brian Bolz
Ms. Lisa Brisbane
Ms. Brenda Brooks
Mr. Terry Brooks
Mrs. Claudius P. Brownley III
Ms. Linda Chastain
Mr. Winthrop C. Cobb
Mr. Paul Cobo
Dr. and Mrs. Kenneth H. Cowan
Mr. and Mrs. Jimmy L. Crocker
Ms. Jennifer Cronin
Mr. Benjamin C. Cutler
Robert W. Day, M.D.
Mr. Tylor Dekin
Mr. Thomas Devlin
Mrs. Thu Do
Mr. and Mrs. Brian Doory
Ms. Margaret Dunning
Ms. Shara Dyer
Mr. and Mrs. Christopher Dyson
Mr. Adrian Eversoll
Mr. and Mrs. Grady C. Frank, Jr.
Mr. and Mrs. Roger P. Furey
Ms. Tisha Galarce
Mr. Lucien Gerber
Ms. Amy Goin
Mrs. Virginia A. Good
Ms. Joyce Grady
Mr. Gregory D. Grant
Ms. Leona Grennell
Mr. Michael P. Gwinn
Mr. and Mrs. Charles C. Habliston IV
Ms. Stacy Hadeka
Mr. Eric Hall
Mr. and Mrs. Bertrand M. Harding, Jr.
Mr. Dewitt C. Hauser IV
Mr. Franklin Headley
Ms. Margaret Heishman
Mr. Howard High
Ms. Diane Hodges
Ms. Sharon Holmes-Agbede

The Pitt Society (\$250 to \$499)

Robert H. Pitt was the first chairman of the Foundation’s board of directors. His commitment, wisdom and leadership played a great role in the Foundation’s growth.

INDIVIDUALS

Mr. Mark Aaron
Mr. Dave S. Adler
Mr. Edward D. Adler
Dr. and Mrs. David S. Alberts

Mr. and Mrs. Francis J. Hopke
 Mr. Frank Hopkins
 Ms. Elizabeth A. Hoy
 Dr. and Mrs. Herbert M. Hughes
 Mr. and Mrs. Robert T. Jones
 Mr. Don Keibel
 Ms. Shilah Keltner
 Ms. Aida Khayaltdinova
 Mr. Michael Klein
 Mr. Tyler S. Klingaman
 Mrs. Mari M. Kotwicki
 Mr. Christopher Kohl
 Mr. David Koris
 Mr. David Kranz
 Mr. David J. Kullmann
 Mr. Anthony Lapinto
 Ms. Sandra L. Lau
 Mr. Nicholas Lenthe
 Mr. Paul E. Levesque
 Ms. Sheila Long
 Jesech Lovell
 Mr. Tom Oscherwitz and Ms. Amanda Maisels
 Mr. Samuel Machado II
 Ms. Elizabeth Mangino Wallace
 Ms. Yanira Marrero Rodriguez
 Mr. Francis S. Martin
 Mr. Craig Martinez
 Mr. Gene Matsushita
 Mr. James J. Matthews, Jr.
 Ms. Joan M. Matthews
 Mr. and Mrs. Patrick J. McCarty
 Ms. Ashley McGee
 Mr. Ralph McNeil
 Ms. Christine McRae
 Mr. Eric L. Mensing
 Mr. and Mrs. Dennis I. Meyer
 Dr. and Mrs. Frank L. Meyskens, Jr.
 Mr. Clark Milligan
 Mr. Carmelo Montes
 Mr. Thomas W. Moran
 Ms. Sara H. Murphy
 Ms. Clarissa Narine
 Mr. Josh Nester
 Mr. Michael Newcomb
 Mr. Kevin Newsome
 Ms. Elizabeth A. Nunley
 Mr. Barry Obrand
 Mr. Clark Olson
 Mr. William Owens
 Ms. Pooja Patel
 Ms. Cameron Peden
 Mr. Brian Plesich
 Mr. Sal Pontillo
 Mr. Jason P. Pool
 Mr. Granville Potter, Jr.

Mr. and Mrs. Thomas L. Regnell
 Mr. and Mrs. Terrence E. Reideler
 Mrs. Sandra T. Rodriguez
 Mr. Everett G. Roehl
 Ms. Jean Romano
 Mr. Hershel Rose
 Mr. and Mrs. Clifford H. Routh
 Ms. Herwana L. Sayre
 Mr. Frederick Schwomeyer
 Ms. Lori Schlesinger
 Mr. and Mrs. Thomas A. Scully
 Mr. and Mrs. Simon H. Serfaty
 Ms. Shawn Shaw
 Ms. Stephanie Shiman
 Ms. Karen Smith
 Mr. Brian S. Spitzer
 Mr. and Mrs. Joseph G. Spitzer
 Mrs. Joyce B. Spracklen
 Mrs. Doris D. Sprong
 Mr. William C. Sprouse
 Mr. Jan St. Croix
 Mr. Thomas Stanton
 The Honorable and Mrs. Kenneth W. Starr
 Mr. and Mrs. Roy T. Starry
 Mr. Richard Stohman
 Mr. Vijay K. Subramaniam
 Ms. Kimberley B. Sweet
 Ms. Yolanda Swift
 Mr. James Taggart
 Mr. Jeffrey Tarnok
 Ms. Diane Taylor
 Mrs. Elizabeth Tobin
 Mr. Willie Triplett
 Mr. Franca Trubiano
 Ms. Jane M. Twomey
 Mr. John Valleau Jr.
 Mr. David Vorhaus
 Mr. William F. Vosbeck
 Mr. Mark E. Waldron
 Mr. Richard C. Walker, Jr.
 Mr. and Mrs. Stuart L. Watt
 Mr. August M. Wegner IV
 Mr. Charles Whitley
 Dr. Jon W. Williams, Jr.
 Mr. and Mrs. Scott A. Wilson
 Ms. Elizabeth Wise
 Mr. Norman Woods
 Mr. Lance Yuen
 Mr. and Mrs. Donald J. Zandstra
 Hong Zeng
 Ms. Vanessa Zimmerman

ORGANIZATIONS

Allapattah Flats K-8 School
 American Management Resources Corporation
 Bank of America Foundation

Bank of America United Way Campaign
 Belle Haven Golf Shop, Inc.
 Boeing
 Carmine's DC LLC
 Dynamark Security of Richmond, Inc.
 Edwin Chinito Silva Memorial Foundation Corp
 Finopstrat Advisors LLC
 Gannett Foundation
 Global Impact
 Guiffré Distributing Company
 IBM Retiree Charitable Campaign
 Lee's Summit West Titans Booster Club
 Lifespan, Inc.
 Abram C. Becker Fund of the Lutheran Community Foundation
 Omaha Community Foundation
 PG&E Corporation
 Sis Nash Memorial Fund of the Hampton Roads Community Foundation
 The Caminiti Insurance Group, LLC
 The GE Foundation
 The Giving Campaign
 Triple Sisters, Inc.
 TRT-Tech, Inc.
 Yahoo!
 YourCause, LLC

Friends (\$100 to \$249)

INDIVIDUALS

Ms. Mary Adams
 Dr. Virginia A. Aldigé
 Mr. Fred C. Alexander, Jr.
 Mr. Jason P. Alexander
 Ms. Carol Allen
 Mr. Grant Allen
 Ms. Tracy L. Baroni Allman
 Louise S. Appell, Ph.D.
 Mr. Richard O. Ayres
 Mr. Robert Bachmann
 Mr. Bradley Backstrom
 Ms. Terri L. Bartlett
 Mrs. Reather L. Battle
 Mrs. Barbara G. Beckwith
 Mr. Ronald Behlendorf
 Mr. Steven Bennett
 Mr. Paul C. Bergson
 Ms. Rebecca A. Bernstein
 Mr. and Mrs. Andrew C. Blair
 Ms. Aija C. Blitte
 Mr. and Mrs. Donald W. Boyd
 Ms. Mara Bralove and Mr. Ari Fisher

Mr. Thomas H. Brandon
 Mrs. Venus C. Britt
 Mr. and Mrs. Donald R. Broadland
 Mr. and Mrs. Joseph R. Brocato
 Estate of Jenny Brown
 Mr. William Brown
 Mr. and Mrs. Karl O. Budmen
 Mr. Maurice Bukshpan
 Mr. David M. Burke
 Mr. Evan M. Burkhart
 Mrs. Margaret Butler Compton
 Mr. and Mrs. Robert B. Cahall
 Ms. Donna Calamari
 Mr. James Canterbury
 Mr. Edward C. Castillo
 Ms. Kimberly Cates
 Mrs. Becky Chan
 Dr. Chin-Fei Chan
 Ms. Doreen Ciavarelli
 Mr. R. Michael Clark
 Mr. H. Colley
 Ms. Debra Cook
 Ms. Frances P. Cooper
 Ms. Maria Corsaro
 Mr. and Mrs. Stephen Cover
 Kira D. Crosby
 Ms. Allison Curtis
 Mrs. Cheryl L. Dahlin
 Mr. and Mrs. Fred N. Dailey
 Mr. and Mrs. Mark Daly
 Mr. John C. Daniel
 Ms. Suzanne Debs
 Mr. Lawrence F. Del Pizzo
 Ms. Adina Delgado
 Dr. and Mrs. Michael L. Delk
 Mrs. Elizabeth Dere
 Mr. and Mrs. Robert J. Dillon, Jr.
 Mr. Ralph E. Dorsey
 Dr. Mark D. Drapeau
 Mr. Keith Dryden
 Ms. Sara L. Dube
 Mr. Lester Edwards
 Mr. Brian H. Efird
 Mr. Richard Egan
 Mr. Robert Ellis
 Mr. Richard Elman
 Mr. Mark Esherick
 Ms. Anne E. Estes
 Ms. Karen Fairty
 Ms. Laura J. Fay
 Mr. Robert Fisher
 Mr. and Mrs. John FitzGerald
 Mr. Peter J. FitzGerald, Jr.
 Ms. Virginia Flinchum
 Mr. Joseph Forbes
 Mr. P. J. Ford
 Mrs. Cheryl Frazier
 Mrs. Beverly O. Friedman

Mr. Rush M. Fritz
 Mr. and Mrs. Craig Fuller
 Ms. Marjorie Jean Funk
 Mr. Basil S. Gabriel
 Mr. Bruce E. Gaudette
 Mr. Samuel Giberta
 Dr. John A. Gibson
 Mr. David Goetsch
 Mr. Leonard J. Goldstein
 Ms. Ali R. Gooyabadi
 Ms. Carol Gordon
 Mr. Jon Gottlieb
 Mr. Richard Grant
 Mr. and Mrs. David R. Gross
 Mrs. Monica S. Grubbs
 Dr. and Mrs. R. Kennon Guerry
 Mr. and Mrs. John H. Guy
 Mr. Scott Hallford
 Mr. and Mrs. Michael Hanczaryk
 Mr. William Hartman
 Mr. Lars Erik Haug
 Mrs. Miriam Hendrickson
 Mr. Henricus A. Heuts
 Mr. Daniel P. Higgins
 Ms. Helen Hinton
 Mr. and Mrs. Frederick P. Hitz
 Mr. and Mrs. Caswell O. Hobbs
 Dr. Casey Hoffman
 Ms. Margaret Hoffman
 Mr. Scott A. Holbrook
 Mr. Samuel C. O. Holt
 Mr. John Hosier
 Mrs. Susan Howard
 Mrs. Tracy L. Hunter
 Miss Pamela Jacobson
 Ms. Julie Johnson
 Ms. Alison Jones
 Dr. and Mrs. Arthur E. Kane
 Mr. Tyler Keogh
 Mr. David E. Knudsen
 Mr. Eli Kogan
 Mr. Douglas L. Kreifels
 Mr. Michael W. Landes
 Mr. and Mrs. Phillip Lantz
 Ms. Barbara A. Lassally
 Mr. Hoa T. Le
 The Honorable and Mrs. Patrick J. Leahy
 Mrs. Lorraine O. LeMahieu
 Ms. Jennifer L. Levin
 Mr. and Mrs. James M. Li
 Mr. Kevin Lokay
 Mr. John P. Lorand
 Mrs. June MacDonald
 Mr. Mark J. Marino
 Mr. Carlos C. Maritoni
 Mrs. Donna E. Marsh
 Mr. Thomas G. Martin
 Ms. Lillian Mastray
 Ms. Vickie Matter

Mr. Michael S. Matthews
 Mrs. Mary E. McCulloch
 Mr. Dennis W. McGlynn
 Mr. Zachary W. McGrath
 Ms. Brittny C. McKinney
 Mr. and Ms. Stephen D. McMillan
 Mr. Sammy H. McMurray
 Mr. Kyle S. McNay
 Mrs. Catherine A. Mehigan
 Ms. Janette Mello
 Dr. and Mrs. Wayne Minami
 Mr. and Mrs. John J. Mullenholz
 Ms. Donna F. Mullins
 Mr. Gregory L. Murphy
 Mr. Jack Murphy
 Mr. Charles L. Musson
 Ms. Michelle Norman
 Ms. Olajumoke Olabanji
 Mr. and Mrs. Charles Oliver
 Ms. Katie Oppenheim
 Mrs. Anne T. Overman
 Ms. Gertrude H. Parkhurst
 Mr. Brian C. Paulus
 Ms. Dee Ann Pederson
 Mrs. George W. Perkins
 Ms. Mandy Peters
 Ms. Nancy E. Petrisko
 Mrs. Joanna Plymale
 Ms. Alice M. Podlaski
 Ms. Pamela Pontzer
 Mr. Nicholas Prins
 Mr. and Mrs. Frank J. Quirk
 Ms. Charlene K. Raber
 Mr. Paul Rapchak
 Mr. and Mrs. Heinrich Ratz
 Ms. Doris C. Rechtman
 Mrs. Deborah Reed
 Mr. Robert E. Reilly
 Ms. Patricia Reutemann
 Mrs. Betty M. Rich
 Mr. and Mrs. Cuyler Richards
 Mrs. Margaret R. Rizzi
 Ms. Carolyn M. Robbins
 Mr. and Mrs. Andrew Romay
 Mr. William A. Rozenwaser
 Mr. Brian Rudnick
 Ms. Elizabeth M. Ruffin
 Ms. Larene R. Rullman
 Mr. and Mrs. Stephen F. Rutz, Sr.
 Mr. Shawn Salvant
 Mr. Mark Sarubbi
 Mr. James Schweitzer
 Ms. Kim B. Shedd
 Ms. Mandy Shefman
 Mr. James D. Shelton
 Mr. and Mrs. David M. Sherman
 Ms. Fumiko Shido
 Ms. Marilyn R. Shingleton
 Lt. Gen. R. Shoemaker

Mr. and Mrs. Brian K. Shure
 Mr. Richard E. Sickmon
 Mr. Richard A. Sidey
 Ms. Sandra R. Singer
 Mr. and Mrs. Paul C. Skelly
 Mr. Lee Slater
 Mrs. Susan R. Smerker
 Mr. Steven A. Skylstad
 Mrs. Stacey Smith Anderson
 Mr. and Mrs. Frederick D. Smith, Jr.
 Mr. Ian D. Smith
 Mr. Thomas W. Smith
 Ms. Debra D. Sobiech
 Mr. and Mrs. Randy Stark
 Mr. and Mrs. Benjamin Steinman
 Ms. Pamela R. Stevens
 Ms. Rebecca Swanson
 Mr. and Mrs. Robert A. Swearingen
 Ms. Katelynn Taylor
 Mr. and Mrs. L. Sherman Telleen
 Mr. Aaron Thomas
 Mr. and Mrs. Daniel W. Thomas
 Mrs. Karen M. Thornhill
 Mrs. Catherine I. Threet
 Mrs. Marie T. Tibbs
 Mrs. Dolores M. Timmons
 Mr. Karsten Tjernagel
 Mrs. Jacquelyn M. Tribble
 Mr. J. Gray Tuttle
 Mr. and Mrs. Leonard Tydrick
 Mr. and Mrs. Gerrit B. Tysse
 Ms. Nancy Valentine
 Mr. Dwayne Vande Krol
 Ms. Jennifer Vedadi
 Ms. Sandra J. Vetter
 Mr. Paul Vogel
 Ms. Jennifer Walters
 Mr. Craig T. Wanke
 Mr. David Warsaw
 Ms. Judith Weinstein
 Mrs. Joan Whelehan
 Ms. Carolyn M. White
 Mr. Kenneth M. White
 Mr. and Mrs. Robert L. Whittle II
 Ms. Eva Wilson
 Ms. Virginia P. Wilson
 Ms. Nancy P. Wojcik
 Mr. William Woodruff
 Mr. Donald Wright
 Mr. and Mrs. Greg Wright
 Ms. Naomi Wurdeman
 Mr. David A. Wysong
 Mr. Henry Yee
 Ms. Barbara J. Young

Beneficiary Events

Individuals and organizations select the Prevent Cancer Foundation to be the beneficiary of funds raised through an event they organize and host. Beneficiary events vary in size and type, and include everything from lemonade stands, art shows, water ski competition, online video games, to fantasy football and silent auctions. The Prevent Cancer Foundation would like to recognize the following events, which raised over \$1,000 and increased awareness of the importance of cancer prevention and early detection.

Breast Cancer Bites – 94.7 Fresh FM
 Call of Duty Marathon
 Casino Night – The Oncology Institute
 CrossFight Against Cancer DailyFeats
 David Tintera Facebook Campaign
 Fantasy Football League Draft Night and Silent Auction
 Holden Cup
 Skierpalooza
 Speed Demos Archives – Awesome Games Done Quick 2012

In-Kind Donors

The following donors have supported the Prevent Cancer Foundation with in-kind gifts and services during the year.

INDIVIDUALS

Ms. Gina F. Adams
 Mr. and Mrs. James G. Aldigé III
 Ms. Linda J. Aufenkamp
 Ms. Catherine P. Bennett and Mr. Fred Frailey

Mr. Charles Black
 Ms. Jan Bresch
 Ms. Anne Jerome Cobb
 Mr. Michael H. Cole
 Mr. Dane Davenport
 Ms. Megan Davidson
 His Excellency, the Ambassador of Indonesia
 Dr. Dino Patti Djalal and Dr. Rosa Djalal
 Mr. and Mrs. Ron Doornink
 Mr. Ethan Firestone
 Mr. and Mrs. Peter J. FitzGerald, Sr.
 Mr. Terry Fitzpatrick
 Her Excellency, the Ambassador of Liechtenstein
 Claudia Fritsche
 Mr. and Mrs. Bruce A. Gates
 Ms. Lauren Gaudry
 Ms. Chanthel Gonzalez
 Mr. Albert M. Gore
 Mr. and Mrs. John H. Guy
 Ms. Lulu Gyourg
 Mr. Kevin Hamm
 Mr. and Mrs. Delk and Jill Hamaker
 Mr. Bill Homan
 Mr. Fred H. Jennings
 Ms. Sabine Kern
 Mr. Sam Lancaster
 The Honorable and Mrs. Patrick J. Leahy
 Ms. Elizabeth Locke
 Mr. Leo Maissen
 The Honorable and Mrs. Jim McGovern
 Mr. Michael Meyer
 Mr. Eric Michael
 Ms. Sharon M. Morris
 Ms. Elizabeth Nibley
 Ms. Alice Nisbet
 Ms. Angie Noss
 Mr. Phil Odeen
 Mr. Anthony Podesta
 Mr. Andrew Ponder
 Mr. Rory Riggs
 Ms. Nicole Rodgers
 Mr. Paolo Sacco
 His Excellency the Ambassador of Switzerland
 Manuel Sager and Mrs. Christine Sager
 Mr. Clark Sarullo
 Mr. Ross Sebek
 Mr. Heike Schmidt and Ms. Jan Stiller
 Mrs. Cathy Stohlman
 Ms. Kristen Shaw
 Mr. Christopher Sorel
 Ms. Erin Sweeney
 Ms. Carole Tomlinson
 Mr. and Mrs. James Michael W. Turner
 Ms. Elizabeth Wells Berkes

Mr. Anderson Williams
 Ms. Elizabeth Williams
 Ms. Abby Wren

ORGANIZATIONS

Baby Banz, Inc.
 Carmine's DC LLC
 Clyde's Restaurant Group
 The Coca-Cola Company
 Design Cuisine
 Don Beyer Volvo of Alexandria
 Fincannon and Associates, Inc.
 Giant Food
 Laporta's Restaurant
 Mott 50
 Peacock and Company Inc.
 PopChips
 Red Acquisition Warehouse, LLC
 RoadID
 Sampson and Company Inc.
 Shadowlight Pictures, LLC
 Shoppers Food & Pharmacy
 Sports Authority
 Subway
 Utz
 Vineyard Vines
 Washington Sports Club
 W*USA 9

Statement of Financial Position

For the year ended June 30, 2012

Assets

CURRENT ASSETS

Cash and cash equivalents	606,145
Accounts and pledges receivable	589,712
	\$1,195,857

INVESTMENTS

General	2,493,670
Donor restricted and Board designated funds	4,736,663
	\$7,230,333

PROPERTY

Office Furniture and Equipment	152,195
Accumulated Depreciation	(146,880)
Total Property Assets	\$5,315

OTHER ASSETS

Prepaid Expenses	27,089
Deposits	23,636
Charitable Gift Annuities	110,218
Interest in Remainder Trusts	299,831
Deferred Compensation Plan	86,337
	547,111

Total Organization Assets **\$8,978,616**

Liabilities

CURRENT LIABILITIES

Accounts Payable and Accrued Expenses	82,144
Deferred Income	—
Grants Payable	195,887
	\$278,031

LONG-TERM LIABILITIES

Charitable Gift Annuities	49,993
Deferred Compensation	86,337
	136,330

Total Liabilities **\$414,361**

NET ASSETS

Unrestricted	6,596,069
Temporarily Restricted	1,689,773
Permanently Restricted	278,413
	\$8,564,255

Total Liabilities and Net Assets **\$8,978,616**

Statement of Activities and Changes in Net Assets

For the year ended June 30, 2012

Support and Revenue

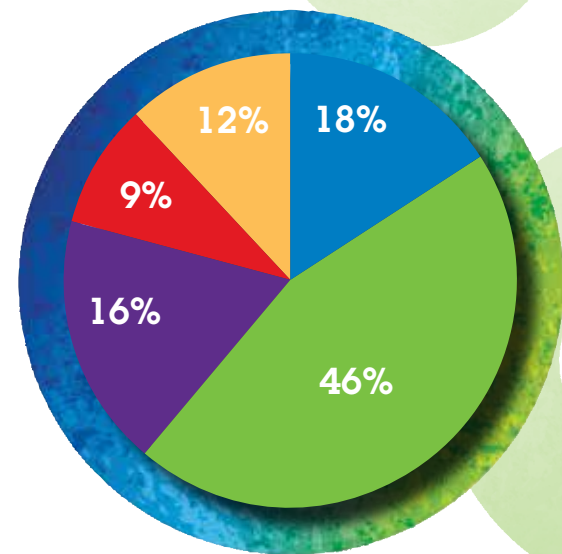
Contributions	2,606,778
Bequests and Other Income	393,011
Investment Income	76,889
In-kind Contributions	869,631
Special Events	1,679,989
Less: Costs of Direct Benefit to Donors	(261,416)
Total Support and Revenue	\$5,364,882

Expenses

Program	
Research	847,868
Education and Public Awareness	2,455,795
Community Outreach	949,694
Management and General	485,513
Fundraising	632,154
Total Expenses	\$5,371,024

Decrease in Net Assets	(6,142)
Net Assets, Beginning of Fiscal Year	8,570,397

Net Assets, End of Year **\$8,564,255**



Expenses by percentage

- 46% Education and Public Awareness
- 18% Community Outreach
- 16% Research
- 12% Fundraising
- 9% Management and General

Carolyn R. Aldigé
President and Founder

Jan Bresch
Executive Vice President and Chief Operating Officer

Karen Peterson
Vice President, Programs

Jim Wood
Senior Director, Marketing and Communications

Carolyn Schmidt
Managing Director, Development

Lisa Hughes
Director, Policy and Advocacy

Liona Chan
Editor



1600 Duke Street
Suite 500
Alexandria, VA 22314

Phone: 703.836.4412
Fax: 703.836.4413
Toll-free: 800.227.2732

www.preventcancer.org



Stop Cancer Before It Starts!

