

## Outline of PREX

### ● Project Objectives

To facilitate the growth of the human resources necessary to serve as the core elements to promote the development of developing countries.

To apply our utmost efforts to stimulate international personnel exchange in Kansai and develop the region into a unique and globally open actor through the human resource development projects.

### ● Number of Staff

24

### ● Basic Property

Funded by 3.6billions from

-97 private companies (of the Kansai Region)

-6 local governments (Osaka Prefecture, Osaka City, Hyogo Prefecture, Kobe City, Kyoto Prefecture and Kyoto City)

### ● Government Agency of Jurisdiction

The Cabinet Office

## Access



- 10 minute walk from Kintetsu Line "Osaka Uehonmachi" station, Exit 14
- 12 minute walk from Metro Sennichimae Line "Tanimachi-kyuchome" station, Exit 10
- 13 minute walk from Metro Tanimachi Line "Tanimachi-kyuchome" station, Exit 5

# PREX

Pacific Resource Exchange Center

## PACIFIC RESOURCE EXCHANGE CENTER (PREX)

International House, Osaka, 2nd Floor

8-2-6 Uehonmachi, Tennoji-ku, Osaka-shi, 543-000 1

TEL: (06) 6779-2850 FAX: (06) 6779-2840

e-mail: [prexhrd-pr@prex-hrd.or.jp](mailto:prexhrd-pr@prex-hrd.or.jp)

web: <http://www.prex-hrd.or.jp>





# PREX aspires to being an indispensable entity for both developing countries and Kansai. We are working to develop human resource capacities in such countries and to facilitate accelerated international exchange through this project activities.

The number of participants in our seminars to date is in excess of 18,079, taken from 152 countries and regions (as of March 2019).

## Seminars in Japan

Under commissions of Japan International Cooperation Agency (JICA) - responsible for Official Development Assistance (ODA) - as well as major economic organizations and overseas counterparts, we hold seminars on management and strategy, with a focus on industrial promotion. These include those on the topics of "Cooperate Management", "Small and Medium sized Enterprises (SMEs)", "Trade Promotion & Marketing", "Environment Management", and "Regional Industry Development & Tourism Development".



Company visit by participants of "JICA Managerial and Financial Support for Small and Medium Enterprises Development (A)"

## Overseas Seminars & Specialist Dispatch

PREX dispatches theme-matched specialists in response to counterpart requests. Specialists then host seminars at the dispatched locations. Also, in collaboration with local governments in Kansai, JICA Partnership Program dispatches specialists and holds training/guidance seminars to complement these seminars in Japan.



Dispatch of "JICA Manufacturing HRD Program in Dong Nai Province, Vietnam"

## Follow-up for Seminar Participants

As part of our follow-up project for the seminar participants who have returned to their home countries, seminar instructors are dispatched to respective countries. By these means we achieve an understanding of subsequent participant activities and related outcomes following their return home. We also assess effectiveness and points for improvement with regards to each seminar in Japan, as well as studying the future needs of respective countries in terms of developing human resource capacities.

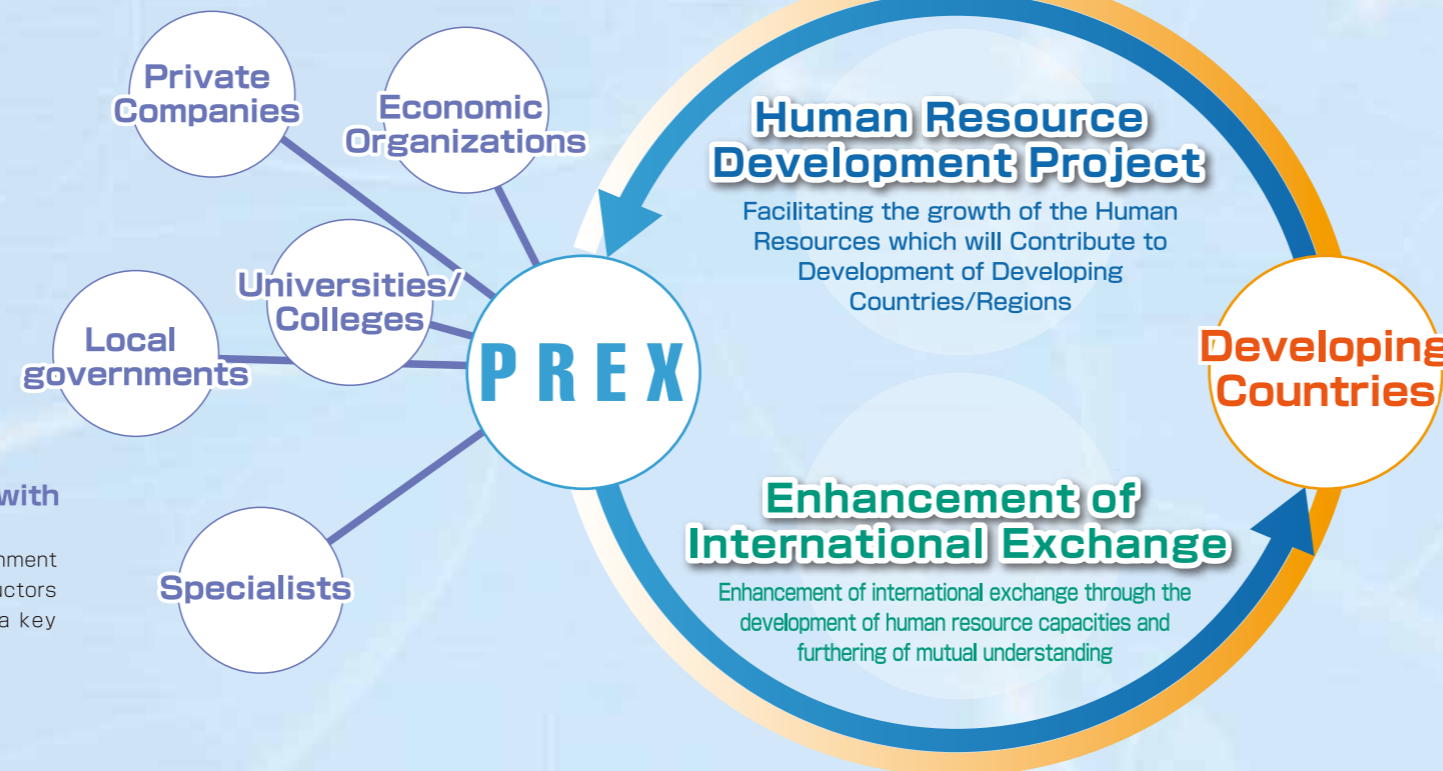


Company visit to current workplace of seminar participant in Japan

## Support and Cooperation for PREX Activities

**Support and Cooperation of PREX by and between Industry, Government, and Academia in Kansai**  
PREX deploys its activities with the support and cooperation of private companies, economic organizations, local governments, universities in Kansai.

**Dedicated Instructors and Specialists with Abundant Experience and Know-How**  
Executives and officers of companies/organizations/government institutions, university personnel, and consultants -instructors and advisors with the essential competencies play a key complementary role in PREX seminars.



Seminar participants comprise administrative officers and corporate executives engaged in industrial promotion for respective developing countries. To maintain good relations established during the seminar, PREX is building a network among seminar participants.



## Enhanced Globalization for Japanese Companies

PREX also undertakes the development of human resource capacities and business exchange projects necessary for the global development of SMEs in Japan, based on our experience as a seminar-implementing organization targeting human resources in developing countries. PREX has been highly assessed by participants in its training program to develop on-site executives for Japanese companies which deployed operations in Viet Nam.



Company visit by participants of "PREX Manager Development Program for the Vietnamese Staff"

## Building Networks between Companies in Kansai and Respective Countries

PREX holds meetings or roundtable sessions at seminars between companies in Kansai and seminar participants. Moreover, we are also promoting information exchange and communication with the aim of network utilization through seminar participants who have returned to their home countries.



Roundtable session at "JICA Vietnam-Japan Center: Practical Training Business Course".

## Global Human-resource Development

In cooperation with universities/colleges in Kansai, PREX implements projects to develop global human resource capacities targeted at foreign students in Japan and Japanese students. In addition, with spring/summer vacation periods as the impetus, we also accept foreign and Japanese students on our PREX internships.

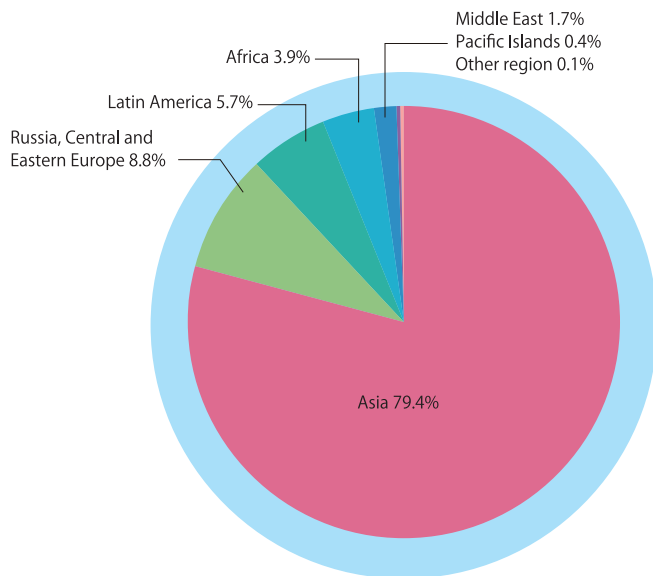


Company visit by participants of "Ritsumeikan Exchange Student Seminar"

PREX has held a total of 798 courses for seminars since its establishment in April 1990. The total number of participants as of March 2020 was 18,613 from 152 countries and regions. (7,589 participated in seminars in Japan, and 11,024 participated in seminars abroad)

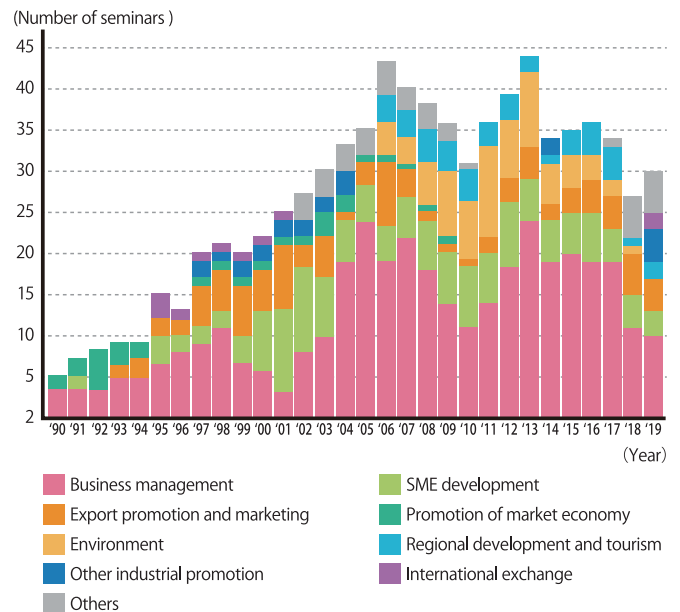
## Seminar participants by region

- Of all participants, a predominant majority of 79.4 % came from Asia including East Asia, South West Asia, Central Asia and Caucasia. This was followed by Central and Eastern Europe, Russia, Latin America, Africa, and so on.



## Seminars by subject

- Based on the original purposes of the establishment of PREX to provide support to developing countries in human resource development for economic and industrial development and to promote international human exchanges in the Kansai region, we mainly held seminars with themes such as "Business management", "Small and medium sized enterprise development", and so on.



## PREX's Approach to SDGs

SDGs is the acronym for Sustainable Development Goals which are the international goals from 2016 to 2030. It consists of 17 goals and 169 targets to realize a sustainable world.

As you can see in the diagram on the right, PREX has been tackling the tasks for developing countries. To achieve SDGs, cooperation of the enterprises and organizations supporting PREX' s activities is vital.

We have also been trying to create a comfortable work place in PREX for everyone and to reduce waste.

We will continue working actively to achieve SDGs.

※PREX participates in Kansai SDGs Platform and Kansai SDGs Contribution Business Network.

### What we do in PREX

5 GENDER EQUALITY

8 DECENT WORK AND ECONOMIC GROWTH

12 RESPONSIBLE CONSUMPTION AND PRODUCTION







## Chairman

Kiyoshi OTSUBO

Chairman, President & CEO,  
Rengo Co., Ltd.



## President

Yuki Yoshi OKANO

Ex-President &  
Chief Operating Officer,  
Daikin Industries, Ltd.



## Vice President

Yohsaku FUJI

Adviser,  
The Kansai Electric  
Power Co., Inc.

## Directors

- Y.HIRAOKA** General Manager of Industry Division,  
The Kobe Chamber of Commerce & Industry
- S.HIROSE** Managing Director, Secretary General,  
Kansai Keizai Doyukai (Kansai Association of Corporate  
Executives)
- T. INOUE** Director, International Affairs Department,  
Kansai Economic Federation
- Y.IWAI** Director, Panasonic Corporation
- H.KIGAMI** Senior Vice President, Executive Director,  
Corporate Strategy Planning Department,  
NIPPON TELEGRAPH AND TELEPHONE WEST CORPORATION
- T.KITAMASU** Deputy Senior General Manager, Osaka Secretarial  
Department, SUNTORY HOLDINGS LIMITED
- K.MATSUMOTO** Director of International Division,  
Osaka Chamber of Commerce and Industry
- S.NISHIOKA** General Manager, Economic & Industrial Division,  
Kyoto Chamber of Commerce and Industry
- Y.OKAMOTO** Senior Managing Director and Secretary General,  
Pacific Resource Exchange Center
- S.OYA** Executive Director, Kansai Productivity Center
- M.SHIRAI** Director and Executive Officer, Toyobo Co., Ltd.
- F.TAKEGUCHI** Senior Executive Officer, Osaka Gas Co., Ltd

## Auditors

- S.HAGIO** Chairman, Osaka International Forum
- T.SAKIMOTO** President, Kansai Osaka 21st Century Association
- M.UCHIMOTO** President, Osaka International House Foundation

## Members of the Council

- T.FURUICHI** Director and Vice Chairman, Nippon Life Insurance Company
- H.HARIMOTO** Senior Executive Director - International Relations,  
Department of Civic and Cultural Affairs,  
Osaka Prefectural Government
- K.KAKUMOTO** Director and Senior Managing Executive Officer,  
Sumitomo Mitsui Banking Corporation
- Y.KASUI** Senior Managing Director, Sumitomo Electric Industries, Ltd.
- K.MATOBA** Executive Officer and General Manager, Research &  
Public Relations Division, ITOCHU Corporation
- H.MATSUOKA** Managing Executive Officer Head of Office, Osaka Office,  
Nippon Steel Corporation
- O.MISHIMA** Director General for Ports Bureau,  
Kyoto Prefectural Government
- N.MIZUGUCHI** Superintendent of International Affairs,  
Hyogo Prefectural Government
- N.TANAKA** Senior Managing Executive Officer,  
Sumitomo Mitsui Trust Bank, Limited
- T.TANAKA** Assistant General Manager for Japan Region,  
Deputy General Manager, Kansai Office,  
Sumitomo Corporation
- M.TANIGUCHI** Member of the Board of Directors, Senior Managing  
Executive Officer, MUFG Bank, Ltd.
- M.TOMITA** Executive Officer, General Manager, Osaka Branch,  
Marubeni Corporation
- T.TORIYAMA** Director for Business and International Promotion,  
Economic Strategy Bureau, Osaka City Government
- K.UEMATSU** Executive Director, International Department,  
Office of the Mayor, Kobe City Government
- H.YAMAGUCHI** Senior Director, International Relations Office, City of Kyoto

## Supreme Advisers

- H.FUKANO** Co-Chairperson, Kansai Keizai Doyukai  
(Kansai Association of Corporate Executives)
- K.HISAMOTO** Mayor, Kobe City Government
- T.IDO** Governor, Hyogo Prefectural Government
- H.IETSUGU** Chairman, The Kobe Chamber of Commerce & Industry
- D.KADOKAWA** Mayor, City of Kyoto
- M.MATSUMOTO** Chairman & CEO, Kansai Economic Federation
- S.NISHIO** President, Osaka University
- T.NISHIWAKI** Governor, Kyoto Prefectural Government
- H.OZAKI** Chairman, Osaka Chamber of Commerce & Industry
- H.TAKEDA** President, Kobe University
- Y.TSUKAMOTO** Chairman, Kyoto Chamber of Commerce & Industry
- J.YAMAGIWA** President, Kyoto University
- K.YOSHIDA** Director-General, National Museum of Ethnology

## Special Advisers

- T.ACHIKITA** Representative Director & CEO President,  
Nankai Electric Railway Co., Ltd.
- K.HASUWA** President, Obayashi Corporation
- O.ISHITOBI** COUNSELOR, Sumitomo Chemical Co., Ltd.
- Y.KARASAWA** Representative Director Chairman of the Board,  
Mitsui Sumitomo Insurance Co., Ltd.
- T.KIJIMA** Vice Chairman of the Board of Directors,  
West Japan Railway Company
- M.KIMATA** Chairman and Representative Director,  
KUBOTA Corporation
- T.KOBAYASHI** Chairman of the Board, Group CEO,  
Kintetsu Group Holdings Co., Ltd.
- M.KONDO** General Manager, Osaka Branch,  
Toyota Tsusho Corporation
- K.KONOIKE** Chairman Emeritus, Konoike Construction Co., Ltd.
- M.MITSUKA** Senior Executive Adviser, Chief Executive Officer,  
Mitsubishi Tanabe Pharma Corporation
- S.SASABE** Senior Adviser, Bando Chemical Industries, Ltd.
- H.SATO** Adviser, Kobe Steel, Ltd.
- Y.SATO** Chairman of the Board, Sumitomo Life Insurance Company
- G.SEN** President, Kyoto City International Foundation
- T.TAKENAKA** Honorary Chairman of the Board, Takenaka Corporation
- T.TSUJI** Chairman, Konoike Transport Co., Ltd.
- H.YASUHARA** Representative Director, President & Corporate Officer,  
WACOAL HOLDINGS CORP.
- H.YOSHIKAWA** CHAIRMAN,  
OSAKA FOUNDATION OF INTERNATIONAL EXCHANGE

## Advisors

- Y.INOUE** Former Chairman, Pacific Resource Exchange Center
- S.KUWAYAMA** President, The Association for Overseas Technical  
Cooperation and Sustainable Partnerships(AOTS)

