

XEROX®



Technology | Document Management | Consulting Services

print | copy | scan | fax

# Advanced **color** made easy



# Phaser 6180

color printer

# Phaser 6180MFP

color multifunction printer

Xerox offers a choice of value-packed color devices for your busy small-to-medium-size business, each designed to handle your office document demands with speed and precision:

**The Phaser 6180 color printer delivers fast printing, outstanding color quality and unmatched ease-of-use. The Phaser 6180MFP color multifunction printer adds to those strengths with advanced copying, scanning and faxing — all the tools you need to get more work done with optimal efficiency.**

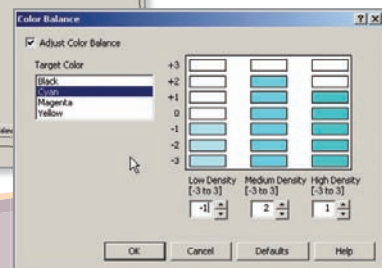
## Print to please

**Need to impress? For outstanding print quality, these devices perform beautifully.**

- 600 x 600 x 4 dpi resolution delivers an amazing 16 shades of color per pixel — often perceived as higher print quality than many 2400 dpi devices.
- EA-HG toner technology — with particles engineered to have uniform size and shape — gives your printed images superior detail and clarity. It's the same high-quality toner used in our professional graphic-arts color printers and MFPs.
- True Adobe® PostScript® 3™ print language ensures your jobs are printed accurately every time.
- PANTONE® Color approved solid-color simulations, Xerox color correction technology and simple calibration tools automatically give you the right color or let you fine-tune colors for special applications.



*With simple on-screen color manipulation tools, the Phaser 6180 and Phaser 6180MFP make it easy to ensure that the colors you want are the colors you get.*



# print

## Phaser 6180



### Step up the pace

**The Phaser 6180 laser printer gets your jobs out quickly. Very quickly.**

- A print speed of up to 20 ppm in full color brings your work to colorful life without slowing you down.
- Print black-and-white — even complex or large jobs — at up to a speedy 26 ppm thanks to a powerful 400 MHz processor and 128 MB of memory (expandable to 1,152 MB).
- A first-page-out time as quick as 10 seconds means your job's out faster than your trip to the printer.
- The 60,000-page-per-month duty cycle easily handles a steady flow of office document demands.
- Multiple connectivity options — Ethernet, USB, parallel and optional wireless — give you the power and flexibility to support your diverse workgroup.

# print copy scan fax

## Phaser 6180MFP

### Go full speed

**Robust multifunction performance that easily keeps up with the busy pace of your entire office.**

- One space-saving device does the work of four standalone machines, combining powerful printing, copying, scanning and faxing.
- Fast color at up to 20 ppm lets your entire workgroup enjoy the benefits of color without slowing down.
- Black-and-white prints at up to a quick 31 ppm regardless of your job's size or complexity, thanks to a 400 MHz processor and 348 MB of memory (expandable to 1,408 MB).
- A scan speed of up to 7 color or 20 black-and-white scans per minute lets you quickly go from paper to digital.
- Walk-up fax and LAN fax (fax from the print driver) delivers up to 400 x 400 dpi resolution, and includes JBIG compression technology for faster transmissions.



*Intuitive control panel makes copy, fax and scan functions easy to use, and also displays job status and toner levels.*

*One-button copying makes walkup use quick and easy. No need navigating a menu just to make a copy.*

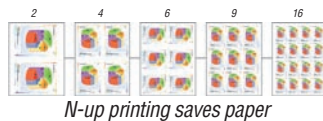


*Phaser 6180MFP control panel*

## Work hard, print (and copy, scan and fax) easy

From installation to everyday operation, these devices provide a wealth of features to make office life easier.

- Complete installation takes only minutes, thanks to the advanced Phaser Installer software.
- Check print job status, manage your fax address book (6180MFP) and get quick access to online support right from your desktop with CentreWare® IS internal web server.
- Professional layout functions like N-up, Posters, Booklet and ID Card Copy (6180MFP) increase your document options.
- Built-in support for Apple Bonjour™ (standard) and included Mac drivers will please mixed PC/Mac environments.
- Instant pop-up messages appear on your monitor if print issues arise, thanks to PrintingScout® alerts.
- Super-quiet operation makes the Phaser 6180 and Phaser 6180MFP printers office-friendly.



## Fits your office

- 1 The standard 150-sheet **Tray 1** (MPT) supports a wide range of custom media and sizes.
- 2 The standard 250-sheet **Tray 2** reliably feeds weights up to 80 lb. cover and custom sizes.
- 3 An optional 550-sheet **Tray 3** boosts total paper capacity to 950 sheets.
- 4 The **Automatic Document Feeder** (6180MFP) allows scanning and faxing of multiple-page documents up to 50 sheets.
- 5 Money-saving and fast **automatic duplex** option for two-sided printing (standard on D and DN configurations).
- 6 Standard **348 MB memory** (expandable to 1,408 MB) for 6180MFP and **128 MB** (expandable to 1,152 MB) for 6180 allows for larger print jobs.
- 7 Convenient front door provides **easy access** to the simple-to-replace print cartridges. Choose the high-capacity cartridges for cost savings and nonstop printing. Standard-capacity cartridges are available if printing loads are lighter.



## Powerful scanning solutions

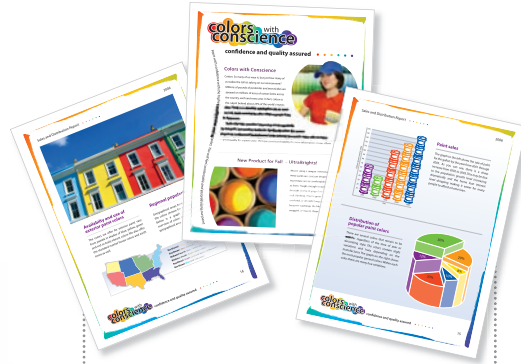
The Phaser 6180MFP converts your paper documents into ultraportable digital files for efficient sharing, organizing and archiving.

- *Express Scan Manager* (standard) lets you easily set up default parameters — like image type, scan resolution, paper size and output destination — for faster, simplified scanning.
- Choose from flexible document-routing options like Scan to Email, Scan to Server (FTP) and Scan to Computer (using SMB network protocol).
- Download email addresses directly to the device-based Address Book Editor for easy front-panel access when sending scans.
- Save your scans as industry-standard PDF, JPEG or TIFF file formats.
- Manage documents and convert scanned images into editable text using Scan to PC Desktop® software (optional).

## Phaser® 6180

## Phaser® 6180MFP

PRINT



### What do both products have in common?

Outstanding laser color quality featuring Xerox-exclusive EA-HG toner technology, which gives your printed images superior detail and clarity.

PRINT

COPY

SCAN

FAX



# Colorful, easy to use and packed with value

COLOR

### The impact of color

Color attracts, clarifies and sells. It is one of the most effective business tools available.

VALUE

### High-end color tools, low-end price

Even businesses on a tight budget can enjoy exceptional color quality.

TEAM PLAYER

### Designed to fit any office

These devices easily connect to your network and fit perfectly in workgroups with both PC and Mac users.



	Phaser 6180N	Phaser 6180DN	Phaser 6180MFP/N	Phaser 6180MFP/D
<b>Speed</b>	Up to 20 ppm color / 26 ppm black-and-white		Up to 20 ppm color / 31 ppm black-and-white	
<b>Duty Cycle</b>	60,000 pages / month <sup>1</sup>			
<b>Paper Handling</b>				
Paper input	Standard <b>Tray 1 (MPT):</b> 150 sheets; Custom sizes: 3 x 5 in. to 8.5 x 14 in. / 76.2 x 127 mm to 220 x 355.6 mm			
	<b>Tray 2:</b> 250 sheets; Custom sizes: 5.8 x 8.2 in. to 8.5 x 14 in. / 148 x 210 mm to 220 x 355.6 mm			
Optional	<b>Tray 3:</b> 550 sheets; Custom sizes: 5.8 x 8.2 in. to 8.5 x 14 in. / 148 x 210 mm to 220 x 355.6 mm			
Document handler	NA		<b>Automatic Document Feeder:</b> 50 sheets; Custom sizes: 5.8 x 8.2 in. to 8.5 x 14 in. / 148 x 210 mm to 220 x 355.6 mm	
Paper output	300 sheets			
Two-sided output	Optional	Standard	Optional	Standard
<b>Copy</b>				
Copy speed	NA		Up to 7 cpm color / 20 cpm black-and-white	
First-page-out time	NA		As fast as 20 seconds color / 11 seconds black-and-white	
Resolution (max)	NA		600 x 600 dpi	
Copy features	NA		Collation, Reduce/Enlarge, ID Card Copy, Poster	
<b>Print</b>				
First-page-out time	As fast as 10 seconds color / 10 seconds back-and-white			
Resolution (max)	600 x 600 x 4 dpi			
Processor	400 MHz			
Memory (std / max)	128 MB / 1,152 MB		384 MB / 1,408 MB	
Connectivity	10/100Base-TX Ethernet, USB 2.0, Parallel, Optional: multiprotocol network card, wireless network adapter			
Page Description Languages	PCL® 6 emulation, Adobe® PostScript® 3™			
Print features	N-up, Booklet printing, Fit to page, Transparency separators, Skip blank pages, Covers/Separators <sup>2</sup> , Poster <sup>2</sup> , Watermarks <sup>2</sup> , Overlays <sup>2</sup> , Banner sheets <sup>2</sup> , Proof Print <sup>3</sup> , Secure Print <sup>3</sup> , RAM collation <sup>3</sup>			
<b>Scan</b>				
Scan destinations	NA		Scan to Computer Application (USB), Scan to Server (FTP), Scan to Computer (using SMB), Scan to Email	
Scan features	NA		JPEG, TIFF, PDF, Color Scanning, Xerox Scan to PC® software (optional)	
<b>Fax</b>				
Fax features	NA		Walk-up fax and LAN fax (fax from the print driver) (33.6 Kbps with MMR/MR/MH, JBIG, JPEG compression), Junk fax barrier, Memory fax, Secure receive, Delay fax, Color fax, Speed dials, Group dials	
<b>Warranty</b>	One-year on-site warranty, Xerox Total Satisfaction Guarantee			

<sup>1</sup> Print Volume uniformly distributed over 30 days. <sup>2</sup> Accessed via PCL driver. <sup>3</sup> Standard for 6180MFP. Requires minimum 256 MB RAM for 6180 printer.

**Device Management**

CentreWare® IS Embedded Web Server, CentreWare Web, PrintingScout™, email alerts

**Print Drivers**

Windows® 2000/2003 Server/XP Pro/XP/Vista, Mac OS® X version 10.2 or higher, Solaris 8/9/10, HPUX® 11.0, AIX® 4.3.3, Turbo Linux™ 10 Desktop, RedHat® ES3/ES4, SUSE™ 9.2/9.3, Fedora™ Core 1, YellowDog 3.x

**Font Support**

PostScript® fonts: 136; PCL® fonts: 81

**Media Handling**

All trays: 17 – 40 lb. bond to 80 lb. cover / 65 – 220 gsm; Two-sided output: 17 – 43 lb. bond / 65 – 163 gsm  
Automatic Document Feeder (6180MFP): 17 – 32 lb. bond / 65 – 120 gsm  
Media types: Plain paper, envelopes, labels, transparencies, card stock, glossy coated

**Color Standards**

PANTONE® Color approved solid-color Simulations, Color Correction, ICC Profile

**Operating Environment**

Temperature:  
Operating: 50° to 90° F / 10° to 32° C  
Storage: 32° to 95° F / 0° to 35° C  
Relative humidity: 15 to 80%

**6180:** Sound pressure: Operating: 49.1dBA, Standby: 28.6dBA  
Sound power level: Operating: 6.62B, Standby: 4.0B

**6180MFP:** Sound pressure: Operating: 51.6dBA, Standby: 26.8dBA  
Sound power level: Operating: 6.59B, Standby: 4.18B

**Electrical**

**6180:** Power: 110–127 VAC or 220–240 VAC, 50/60 Hz  
Power consumption:  
Standby: 70 W (110 V), 68.9 W (220 V),  
Printing: 450 W (110 V), 410 W (220V),  
Power Save: 5.4 W (110 V), 6.3 W (220 V)  
ENERGY STAR® qualified

**6180MFP:** Power: 110–127 VAC or 220–240 VAC, 50/60 Hz  
Power consumption:  
Standby: 90 W, Printing: 500 W,  
Power Save: 17 W  
ENERGY STAR® qualified

**Dimensions (WxDxH)**

**6180:** 15.7 x 19.4 x 18.5 in. / 400 x 493 x 470 mm; Weight: 6180N: 59.8 lb. / 27.2 kg, 6180DN: 62.3 lb. / 28.3 kg  
**6180MFP:** 18.1 x 20.5 x 28.7 in. / 460 x 520 x 730 mm; Weight: 6180MFP/N: 88.2 lb. / 40 kg, 6180MFP/D: 90.4 lb. / 41 kg

**Certifications**

FCC Part 15, Class B, FCC Part 68, Listed UL 60950-1/CSA 60950-1-03, CE Mark applicable to Directives 73/23/EEC, 89/336/EEC, and 1999/5/EC, RoHS Directive 2002/95/EC, WEEE Directive 2002/96/EC

**Supplies**

Standard-capacity print cartridge:\*  
Black: 3,000 pages 113R00722  
Cyan: 2,000 pages 113R00719  
Magenta: 2,000 pages 113R00720  
Yellow: 2,000 pages 113R00721  
High-capacity print cartridge:\*  
Black: 8,000 pages 113R00726  
Cyan: 6,000 pages 113R00723  
Magenta: 6,000 pages 113R00724  
Yellow: 6,000 pages 113R00725

**Options**

550-sheet feeder -  
Phaser 6180 097S03744  
Phaser 6180MFP 097S03833  
256 MB Phaser Memory 097S03743  
512 MB Phaser Memory 097S03635  
Automatic two-sided printing unit 097S03746

Scan to PC Desktop -  
Professional Small Business Edition  
SE Small Business Edition

See web for order details:  
[www.xerox.com/office/scantodesktop](http://www.xerox.com/office/scantodesktop)

Multi-Protocol Network Card -  
Phaser 6180 097S03773  
Phaser 6180MFP 097S03745\*\*  
Wireless Network Adapter 097S03740



Copyright © 2007 XEROX CORPORATION. All rights reserved. Contents of this publication may not be reproduced in any form without permission of XEROX CORPORATION. XEROX®, Phaser®, CentreWare® and Scan to PC Desktop® are trademarks of XEROX CORPORATION in the U.S. and/or other countries. Total Satisfaction Services is a service mark of XEROX CORPORATION. All other trademarks are the property of their respective manufacturers. PANTONE Colors generated may not match PANTONE-identified standards. Consult current PANTONE publications for accurate color. PANTONE®, and other Pantone, Inc. trademarks are the property of Pantone, Inc. As an Energy Star partner, Xerox Corporation has determined that this product meets the Energy Star guidelines for energy efficiency. Energy Star and the Energy Star mark are registered U.S. marks. The information in this brochure is subject to change without notice. 9/07 610P729160B 61CBR-01UC

\*Average standard pages. Declared Yield in accordance with ISO/IEC 19798. Yield will vary based on image, area coverage and print mode.

\*\* Available December 2007