

SAMSUNG

Easily integrated,
fully expandable,
completely dependable



SAMSUNG

Samsung Electronics Europe
1000 Hillswood Drive
Chertsey
Surrey
KT16 0PS
United Kingdom

For more information, please visit www.samsung.com

Distributed by

Printing solutions
as easy as



©2010 Samsung Electronics Ltd. Samsung is a registered mark of Samsung Electronics Corp. Ltd. Specification and design is subject to change without notice. Non-metric weights and measurements are approximate. All data is correct at time of creation. Samsung are not liable for errors or omissions. All brand, product, service names and logos are trademarks and/or registered trademarks of their respective manufacturers and companies are hereby recognised and acknowledged.

2010. 08



The Samsung **MultiXpress**
C9350ND/C9250ND

Introducing Samsung's A3 Multifunction Colour Copier –the **MultiXpress** C9350ND/C9250ND

Delivering a powerful document solution that's easy to use across today's diverse business environment can be challenging. As offices today become increasingly demanding, we have been dedicated to creating such a solution. The **MultiXpress**C9350ND and **MultiXpress** C9250ND have been specifically designed with all types of users in mind – delivering simple functionality that's accessible to everybody and will ultimately enhance office productivity.

» Print

Print business documents and photographic image in outstanding quality both in color and black & white. Control the cost of printing with the unique eco-printing feature which saves power and toner consumption.

» Copy

Fast output up to 35/25 cpm (35 cpm for MultiXpress C9350ND and 25 cpm for C9250ND) for both mono and color. Various copying and finishing capabilities are easily achieved with the Quick Copy menu which allows users to program nearly all commonly used copy features on one screen.

» Scan

Supports color and black scanning to network folders, PCs, e-mail, fax and USB drives. The control panel allows users to select a preview of the scanned item for checking to save time.

» Fax

Send, receive or forward documents with fast and reliable Super G3 Fax mode. Register as many as 500 frequently used locations (numbers) in memory for secure and fast access. For added security, restrict the printing of received faxes so they do not end up in the hands of unauthorized personnel.

» Security

The Samsung Security Framework provides built-in security features as standard, including:

- 1.**Secure Management:** Tracks print jobs and allows easy set up and management of different security configurations for all types of users.
- 2.**Secure Document:** Protects hardcopy documents from possible security breaches.
- 3.**Secure Network:** Guards against anonymous access to the company network via the device. (SSL/TLS, IP Sec, IP v5, etc.)
- 4.**Secure User:** Only authorized users are granted access to use the device functions.
- 5.**Secure Data:** Applies automatic encryption to protect information from security threats.



Buyers Laboratory Inc. Test Report

For over 45 years, Buyers Laboratory Inc. (BLI) has been the leading source for unbiased and reliable intelligence for the imaging industry.

Today, BLI remains the leading authority and provider of critical intelligence on the imaging industry and continually renews its commitment to provide the highest quality products and services to Original Equipment Manufacturers, Dealers and Business Consumers. The Samsung MultiXpress C9350ND and MultiXpress C9250ND have each been awarded the 2010 BLI Pick and Highly Recommended Awards for outstanding design quality and performance.

"In testing these impressive models, it was clear to us that Samsung really did its homework regarding what makes a product best in class," BLI Managing Editor Daria Hoffman commenting on Samsung's win in the BLI "Pick" Awards for the MultiXpress C9350ND and MultiXpress C9250ND.

Table of Results¹:

Reliability	Excellent
Multitasking	Excellent
Administrative Utilities	Excellent
Feedback to Workstations	Excellent
Ease of Network Setup	Excellent
Print Drivers	Excellent
Applications Compatibility	Excellent
Scan Functions	Excellent
Ease of Use	Excellent
Security Features	Excellent

1. Extract from Samsung MultiXpress C9350ND BLI Lab Test Report – Table of Results pg.1 (March 2010)

Samsung A3 Colour Multifunction Copiers

–the **MultiXpress** C9350ND and C9250ND

At Samsung our experience has taught us what the key trends within the business print environment are. As No. 1 in the European A4 mono laser printer and multifunction device markets*, the addition of our new Samsung MultiXpress C9350ND and MultiXpress C9250ND copier devices, completes our business range and places our technology at the forefront of a diverse office landscape. Samsung's quality manufacture and performance, now within A3 format, has designed this range as a refined multifunctional device suitable for any diverse office or large workgroup.

* IDC FY2009 Market Share & Performance Data

Key Benefits

Easy Integration and Expandability

Unique Open Architecture Platform XOA and versatility options allowing quick installation.

1

User-Friendly Design

Intuitive and efficient usability, including the most powerful user interface (UI) customisation, large LCD colour touch screen and professional finishing options.

2

Maximised Productivity

High quality, fast document output, extensive paper handling and finishing options, and personalised 'Document Box' storage for user convenience

3

Powerful, Built-In Security Features

Keeping the office printing environment safe with our advanced built-in security framework that is certified to Common Criteria (CC) standards.

4



Easy Integration and Expandability

Document management in today's business is demanding and complex. Delivering color and mono outputs in high speed and high quality is a typical case. Furthermore, today's business requires more professional-looking documents, customization of printing system to meet the customer's unique environment and various demands. The Samsung **MultiXpress** C9350ND/C9250ND have been specifically designed to respond to these recent trends with a fully modular set-up, various expandability options and a truly flexible, customizable open development platform known as XOA. It is the perfect choice for meeting the exact needs of your office.



Versatile Product Options

Enabling print, copy, scan and fax from one device, saves valuable office space and resources. The **MultiXpress** C9350ND/C9250ND have a full range of options to cater for all businesses - from small work teams right up to large departments.

Configuration options at a glance



	Basic Configuration	Advanced Configuration	Full Featured Configuration
System Configuration	Main Unit + Stand	Main Unit +1,250 Standard Finisher + Dual Cassette Feeder	Main Unit + 3,250 Booklet Finisher + High Capacity Feeder
Max Input Paper Capacity	520 (Cassette) x 2 + 100 (Multi-purpose Tray) = 1,140 sheets	520 (Cassette) x 4 + 100 (Multi-purpose Tray) = 2,180 sheets	520 (Cassette) x 2 + 2,000 (HCF) + 100 (Multi-purpose Tray) = 3,140 sheets
Max Output Paper Capacity	500(Center Tray) +150 (Right Tray) = 650	1,250 sheets + 150 (Right Tray) =1400	3,250 sheets +150 (Right Tray) = 3400
Target Market	Mid-Small Work Group (3-10 persons)	Department Mid-Small Work Group (6-15 persons)	Copy/Print Center Department Mid-Small Work Group (Over 20 persons)

XOA (eXtensible Open Architecture) Software

Samsung's unique Open Architecture Platform combines True Embedded & Web Services development technologies to create one unified SDK developing platform, Java™-based embedded or Web-based applications. By merging these two types of development platforms, IT departments and ISVs receive shared benefits that include:



Customer Benefits

Choice	Implement your print solutions your preferred way. – embedded or web-based.
OOB Access	Solution partners have the freedom to access 'Out Of Box (OOB)' features, such as print, copy and scan, to either customise or provide completely seamless modification.
Customisable UI	Change the user interface to suit your company's exact needs in terms of function controls, user shortcuts and GUI Skin design.
User Extensibility	Reach every user and tailor controls and programmes to suit their bespoke needs.

The implementation of the XOA platform can make integration simple and effective allowing workgroups to achieve a tailored multifunctional print environment.





Intuitive and Efficient Usability

Effective print management and usability can be complicated across many multifunction devices. The Samsung **MultiXpress** C9350ND/C9250ND copier range has been designed with all types of users in mind. With extensive, yet simple functionality that's accessible to everybody, the Samsung **MultiXpress** C9350ND/C9250ND devices can enhance productivity across your organisation. Its easy-to-use control panel and the flexibility of a customisable user interface ensures a reliable and secure way to handle documents and communications, as well as offering a simple way to print, copy, scan and fax.

User Friendly Design

“The Samsung **MultiXpress** C9350ND's control panel is very well designed and offers exceptional ease of use.” ²

2. Samsung MultiXpress C9350ND BLI Lab Test Report pg.13 (March 2010)

The Samsung MultiXpress C9350ND/C9250ND range allows user-friendly operation of the device, with the largest in its class 8.9" flexible, colour LCD control panel that easily moves and tilts for comfortable and reliable operation.

Designed with an **easy-to-use touch panel**, users can gain fast, secure access to the display screen and can establish the current machine status, see prompts during an operation, and easily set up menus.

Large symbols and **easy to use icons** offer user-friendly guidance. Icons shown on the display screen such as Fax may be greyed out, depending on the optional kit or programme installed in your machine. So your machine can be completely tailored to your needs with ease.

Convenient red and green **LED lights** indicate the varying status of the machine, from a simple green light – indicating the machine is on and ready to be used – to a red LED light signifying errors, meaning that users can always be sure of the machines status at a glance.

Paper installation is simple, with easy-to-customise paper length guides to make sure that your most used paper size can be quickly replenished, and with a standard tray holding up to 1,040 sheets users can spend less time refilling the device.

Users can **replace toner cartridges** easily by inserting the new cartridge into its slot until it locks in place, making it simple and less messy compared to traditional toner replacement.



SRA3 450X320mm

A3 420X297mm

Simple Operation.

Accomplish more in fewer steps
Access everything quickly. You won't waste your valuable time on complicated with Quick Copy Menu which allows users to program nearly all commonly used copy features on one screen.

Support Various Paper Types

We offer higher than average paper capacity, supports paper weights up to 253gsm, and handles oversized paper sizes up to SRA3.

Simple Operation

“Conveniently, pressing a key on the upper right of the screen displays selections for Copy and Quick Copy... which eliminates the need for the user to go back to the Home screen to access these functions.” ³

3. Samsung MultiXpress C9350ND BLI Lab Test Report pg.13 (March 2010)

The **Quick Copy menu** allows users to set the copy options quickly from the main display screen, making navigation and setup simple.

Direct Printing Utility is a programme that can send a PDF file directly to the device to print without having to open the file, making print secure and fast.

Simple Copy features allow users to enlarge or reduce sizes, duplex and colour copy, as well as allowing various copying modes such as N-up. All these copy features are easily accessible from the display screen so users can format copies straight from the device.

Easy Maintenance and Management

“Superior network device management utility rivals the best available and includes the ability to manage not just devices but user access as well.” ⁴

4. Samsung MultiXpress C9350ND BLI Lab Test Report pg.15 (March 2010)

Simple Installation – highly automated driver and utility installation, including automated driver distribution across multiple users for quick and easy set-up.

With **LED light indication** for when the imaging unit is at the end of its lifespan and the ease of replacement, there is less downtime and a reduced need for servicing, saving users time and money.



Increase Your Office Productivity

Multifunction copiers improve user efficiency by offering a convenient solution to the problems of multiple office devices. The Samsung **MultiXpress** C9350ND/C9250ND range delivers the reliable, high quality performance that today's diverse office requires. By utilising faster print speeds and convenient functions such as personal folders, this multifunctional print range enables high levels of productivity without the complications.

Reliable Performance

High Quality Output delivers the option for user to increase the quality of their print out directly from the display screen and is ideal for printing general business documents, reports and presentations to the highest standards.

Fast Print Speeds of 35/25ppm and a First Copy Out Time of 8.5 seconds means that users don't have to wait for their documents.



The Samsung MultiXpress C9350ND/C9250ND range offers **Paper handling** with higher than average paper capacity, supports paper weights up to 253gsm and handles oversized paper sizes up to SRA3. The multipurpose tray can also manage envelopes, transparencies and other special media so that users can achieve high quality documents no matter what media they need.



Convenience

Samsung's unique Scan Technology includes four convenient PDF options to suit every user. By utilising the **Compact PDF** function you can achieve additional compression of 30-60%, producing much smaller file sizes that are easy to send and receive.

For even greater ease of use, Samsung recommend the **Searchable PDF** option which makes your image-only PDFs simple to find as it enables an additional text layer below the image, so location is straightforward and fast.

With an **Encrypted PDF** you can send your documents as password protected files, allowing you greater security.

You can also ensure that your electronic documents are reproduced exactly by utilising the **PDF/A** tool, by delivering 100% self contained files you can guarantee that your documents are duplicated faithfully.

Store Documents sent from computers or scanned images in personal folders located on the machine's Hard Disk Drive (HDD). Users can also print stored documents by using a variety of printing features, or send the documents to emails, servers or faxes. This means that users can manage security risks by creating personal passwords for safe, instant access to their frequently used document folders.

The Finisher allows users to access a range of easy and convenient finishing options in order to produce professional looking documents. This includes electric sorting, manual stapling and hole-punching, as well as quick and easy booklet finishing meaning your communications can be simply perfected for a high-quality finish.



Stapling



Punching



Manual Stapling



Office Efficiency and Ecology



The **eco-button** feature allows you to save print resources for eco-friendly printing. Administrators can setup the eco-settings to provide an environmentally friendly tailored approach, with options such as 2-Up and 4-Up printing helping you save paper, toner and money.

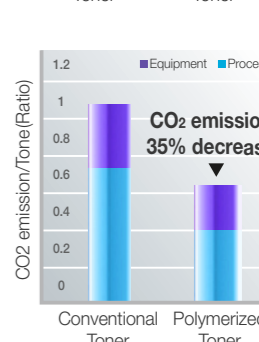
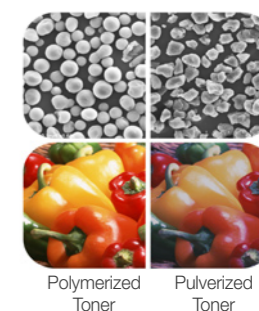
When the device is not in use, users can implement the **Power Save Mode** by simply holding the Power Save Button down for one second, saving valuable energy.



Power Save Button

Eco Button

Samsung Advanced Toner produces sharper images and lines, thanks to the smaller, more uniform toner particles compared to traditional toner. The improved print resolution, wider colour range and overall glossier finishing, enable you to easily produce professional looking documents. The persistent wax layer and fine fusing protects your printouts against folds and smudges, resulting in longer durability, while at the same time helping to reduce paper curl and prevent paper jams. High transfer efficiency means less toner waste and a lower fusing temperature, reducing power consumption. Samsung Advanced Toner is also manufactured in a more energy efficient way, for an overall CO2 reduction of 35% during production, resulting in less damage to the environment.





Keeping Your Office Environment Secure

IT Security is a major concern within businesses today, which is why we have made sure you don't have to pay extra for it. The Samsung Security Framework is integral to our **MultiXpress** C9350ND/C9250ND range – this built-in defence, comes as standard, working to protect against unauthorised access to data. The Samsung **MultiXpress** C9350ND/C9250ND range comes fully equipped with a Trusted Platform Module (TPM), a protected and encapsulated microcontroller security chip used to protect internal data against breaches for added security, guaranteeing you protection across your network, device and office environment. This all comes certified with the world-renowned Common Criteria (CC).

Samsung's Secure User Access

Samsung's Secure User Access protects the device by preventing unofficial users from accessing data through PIN and password authentication. It can also be utilised to approve authorisation and provide job accounting, meaning that you can manage and restrict the access to secure documents and files sent to your MultiXpress device.

Secure Data Functionality

As well as User Access Security, the Samsung MultiXpress C9350ND/C9250ND range offers Secure Data Functionality. Security options from encryption to HDD Image Overwrite mean users can securely store information on the device's hard disk drive, and by implementing an image overwrite function, users can erase image data created during the printing, copying or scanning processes.

Secure Management

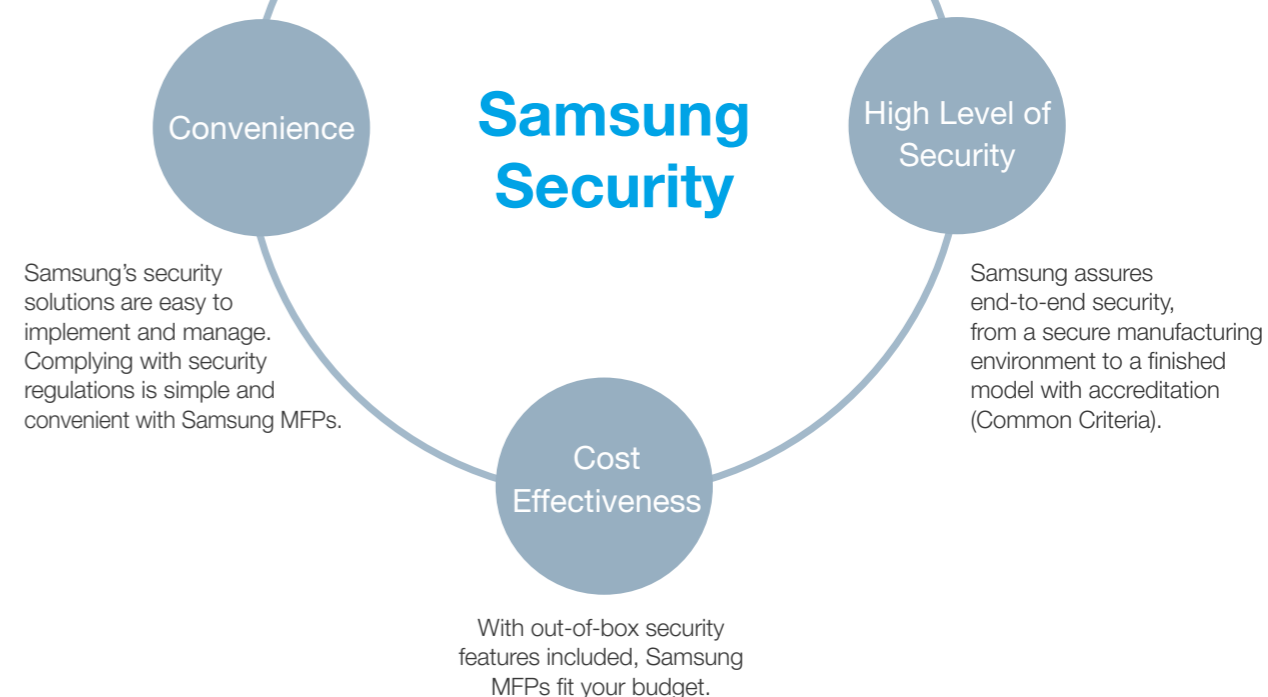
To ensure that all security benefits are utilised to their highest levels, Samsung offers a Secure Management system to provide logs, backup and email notification. This allows users to have an overall view of their secure documents even after they have been printed and stored.

Secure Network Functionality

Combined with the Secure Networking Functionality from SSL/TLS, SNMPv3, IPSec (IPv4, IPv6), and 802.1x (with EAP), users can access the multifunction print features quickly and securely, creating peace of mind for your office infrastructure.

Secure Document Functionality

Alongside the data and network security, Samsung offers Secure Document Functionality to make document tagging i.e. watermarks and stamps, simple and easy, in order to provide high levels of security that are convenient and affordable. Additional security can also be added to supplement the C9350ND/C9250ND's built-in security features.



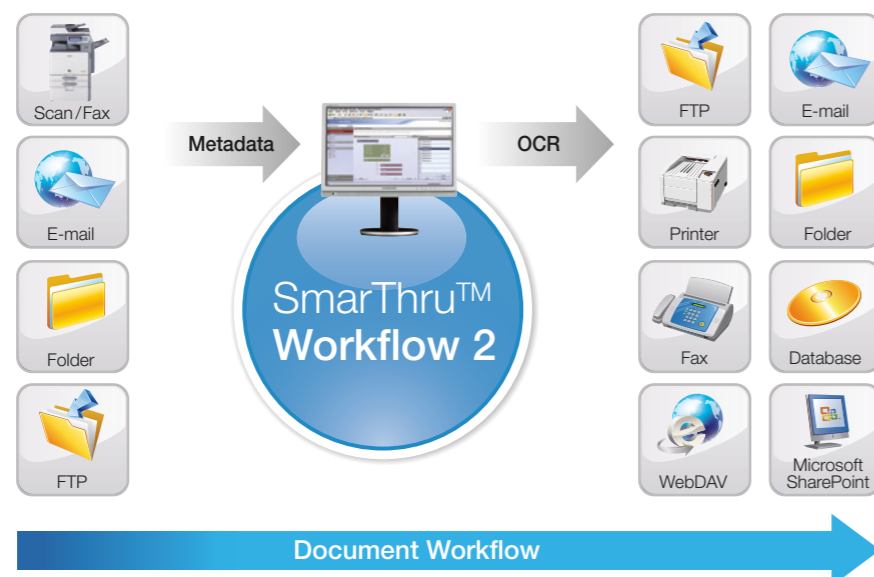


Solution Features

Communicating effectively in a competitive business environment requires much more than high quality network print and multifunction devices. IT decision-makers demand productive solutions that tackle specific issues in their business, enabling them to effectively manage print output and TCO; communicate with clarity; enhance user productivity by providing pro-active support, while keeping a firm eye on overall asset management and ROI. Samsung's extensive range of print and document management solutions do exactly that – combining quick, high quality print with seamless network integration and compliance, all supported by the very latest device, workflow and security management functionality.

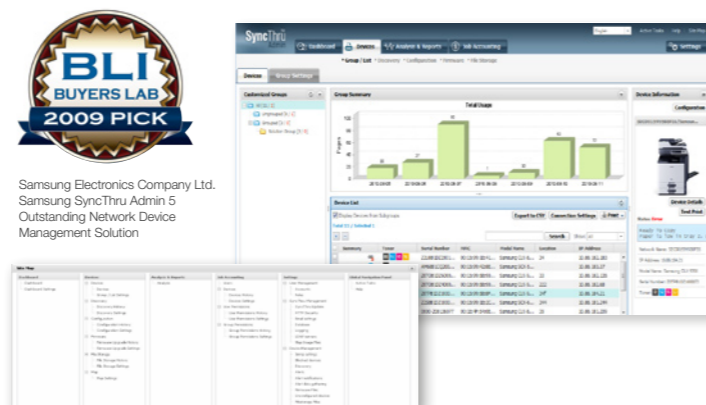
Document Management

Document management solutions assist the integration, archiving, organisation, management and retrieval of knowledge contained in hardcopy documents. Customers can effectively streamline their document-related processes through versatile solutions such as Samsung's SmarThru™ Workflow. This dramatically improves office work efficiency by capturing hardcopy documents and organising them digitally to ensure delivery to the next stage of a business process or into intelligent archive storage for simplified retrieval whenever necessary.



Device Management

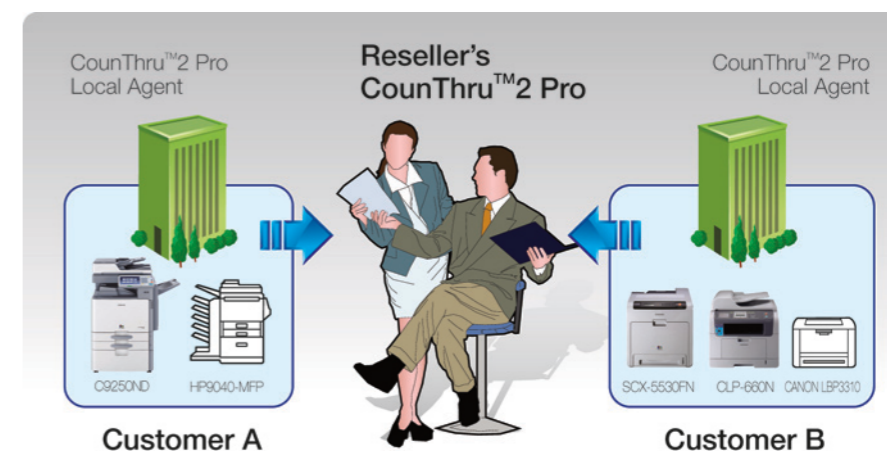
Today's office printing environment is a complex array of devices for printing, copying, scanning and faxing. For IT network administrators to focus on providing a reliable, value-add service delivery, it's vital to manage this complex print infrastructure with simple administration tools. Easy to install and manage, Samsung SyncThru™ Admin manages networked, single and multifunction print devices. SyncThru™ Admin 5 is an industry-leading fleet management software tool, winning the BLI 2009 Pick Award for excellence. It provides increased efficiency and productivity by allowing IT administrators, support staff and users to manage, monitor and diagnose multiple printing devices remotely via a web browser.



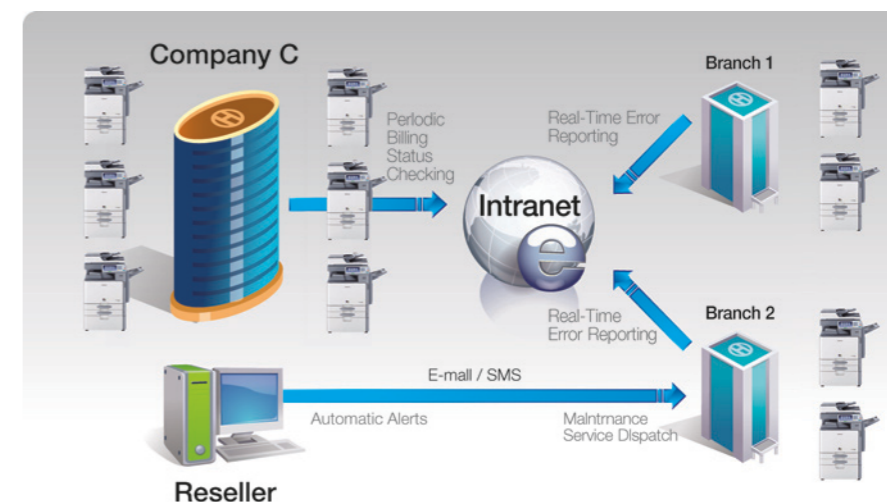
Billing and Job Accounting

Samsung's Job Accounting feature is designed to provide administrators with in-depth information on printing, scanning, copying and faxing performed by each user on any device. This enables any business to set up individual and group accounts for printing, ensuring that user, device and output activity can be monitored and reported in real-time. From any remote connection, IT administrators can manage and control output, setting page limits or making access to certain functions password dependant. Samsung provides CounThru™ 2 Enterprise for print monitoring within large enterprises, which can also allow the IT partner to do this on your behalf, for full financial and operational reporting with minimal effort.

Customer Workflow



CounThru™ 2 Pro is a solution for Samsung Partners and supports local hosting services. The customer's print data is present in the Samsung Partner's database. Therefore, the end-customer can reduce server management costs and the Samsung Partner can provide hosting services for multiple customers.

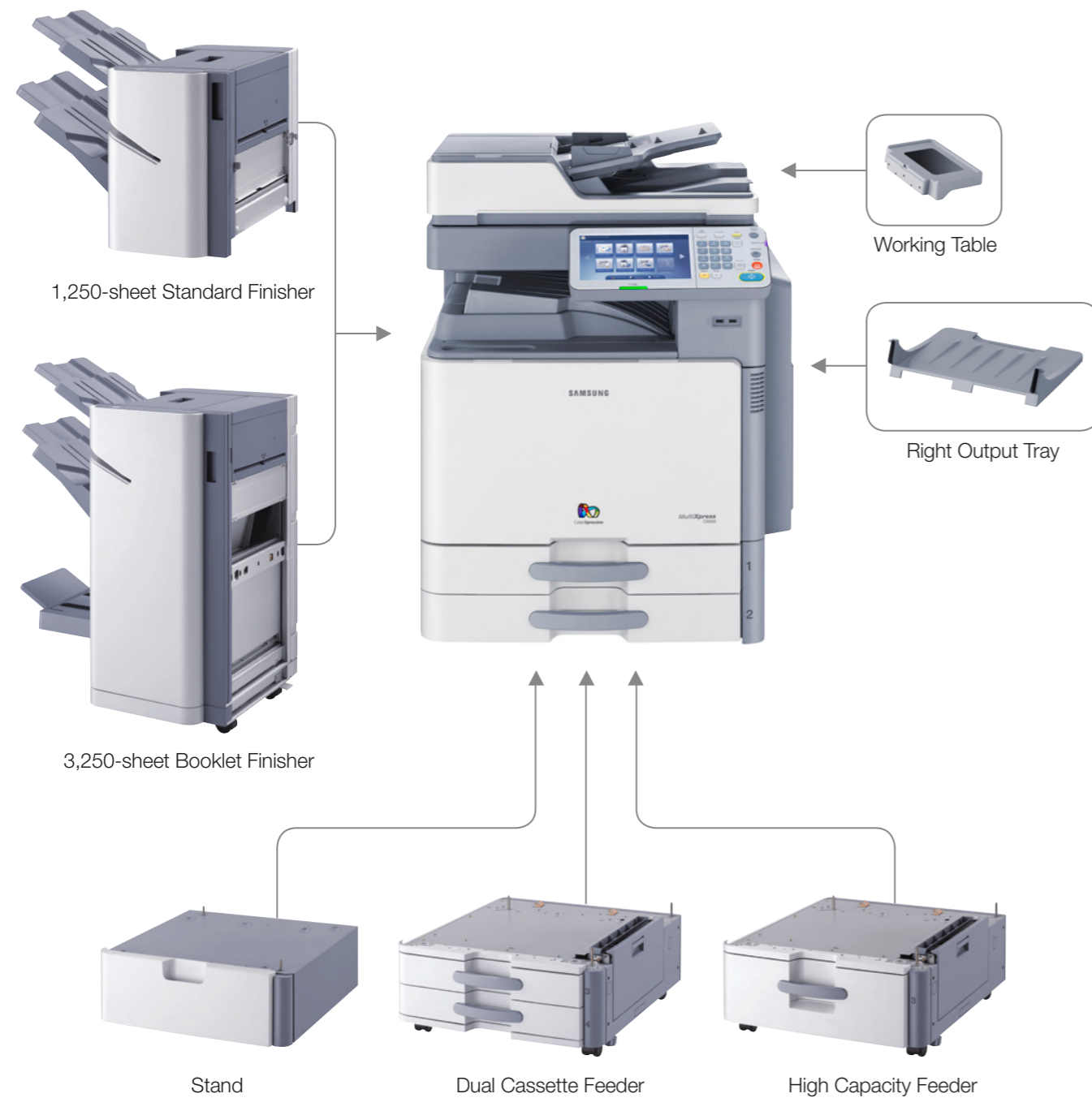


CounThru™ 2 Enterprise is a solution for end-customers. All print databases are present at the customer's site, so the customer's information can be managed tightly.

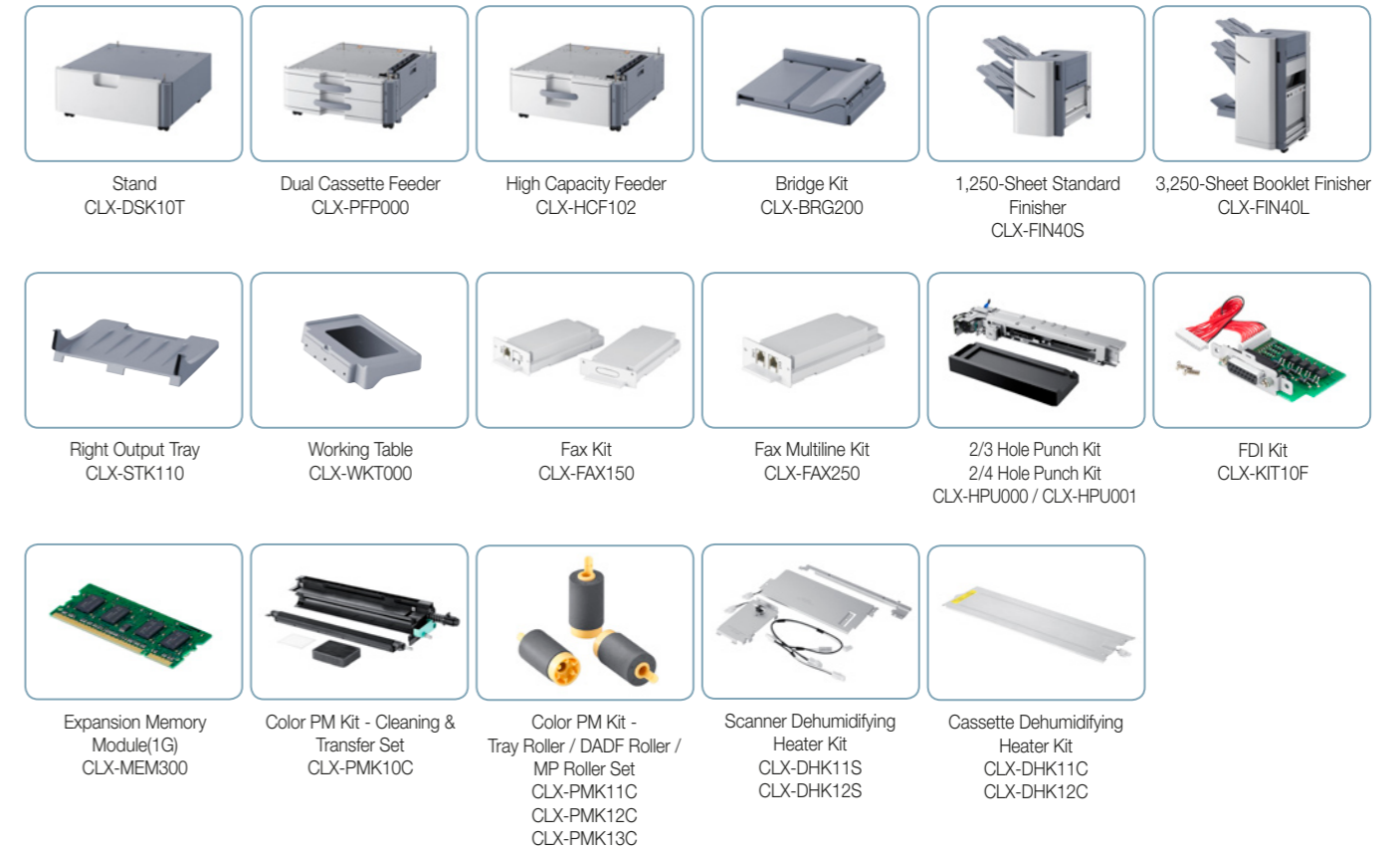


Configuration

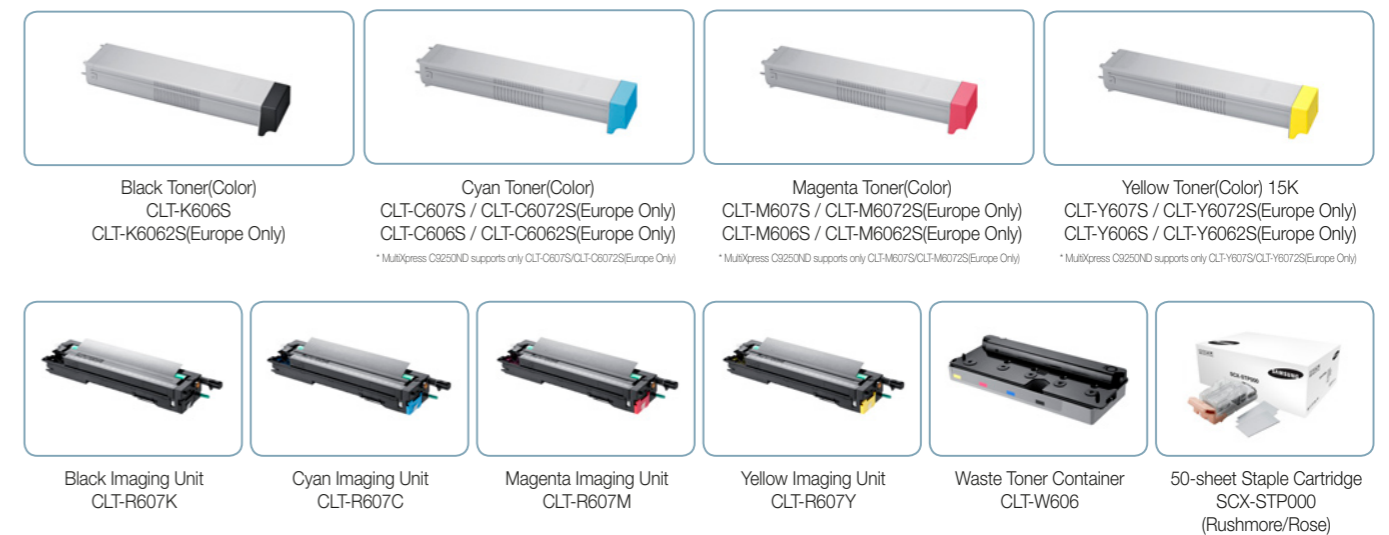
Product Configuration



Option



Supplies





Specifications

	Features	C9250ND	C9350ND
Overview	Function	Print, Copy, Scan, Fax(Optional), Network, Duplex	
Print	Speed (Mono)	25 PPM (A4/Letter LEF)	35 PPM (A4/Letter LEF)
	Speed (Color)	25 PPM (A4/Letter LEF)	35 PPM (A4/Letter LEF)
	First Print Out Time (Mono)	12.5 sec	9.5 sec
	First Print Out Time (Color)	13.5 sec	10.5 sec
	Resolution	Default : Up to 2,400x600 dpi effective output(600x600x2 dpi) Max : Up to 9,600x600 dpi effective output(600x600x4 dpi)	
	Emulation	PCL5, PCL6(XL), Postscript3, PDF 1.7+, XPS	
	Duplex	Default	
	Copy	Speed (Mono)	25 CPM (A4/Letter LEF)
Speed (Color)		25 CPM (A4/Letter LEF)	35 CPM (A4/Letter LEF)
Resolution		Scan : 600x600dpi Printing : - general Mode : 2,400x600 dpi effective output(600x600x2 dpi) - Photo Mode : 9,600x600 dpi effective output(600x600x4 dpi)	
First Copy Out Time (Mono)		9.5 sec	7.5 sec
First Copy Out Time (Color)		10.5 sec	8.5 sec
Zoom Rate		25% ~ 400%	
Multi Copy		9,999	
Duplex Copy		Default	
Copy Features		Quick Copy, Proof Copy, ID Card Copy, Poster Copy, N-up Copy, Booklet Copy, Book Copy, Copy Job Build, Covers, Edge Erase, Margin Shift, Transparency (OHP) Interleaving, Job Interrupt and etc	
Scan		Scan Speed(B/W)	60 ipm (color/mono, 300 dpi, A4/Letter LEF)
	Scan Speed(Color)	60 ipm (color/mono, 300 dpi, A4/Letter LEF)	
	Scan Size Document	Max A3 or Ledger	
	Compatibility	Network TWAIN	
	Method	Flatbed/DADF	
	Resolution (Optical)	600x600 dpi	
	Resolution (Enhanced)	4,800 x 4,800 dpi (Twain driver only)	
	Scan to	E-mail, USB, FTP, SMB, HDD, WebDAV, PC	
FAX	Compatibility	ITU-T G3, Super G3	
	Modem Speed	33,6 kbps	
	Resolution	Max:600x600 dpi(B&W) Max:200x200 dpi(Color)	
	Memory	HDD Back up	
	Auto Dial	Support	
	Fax Feature	Speed Dial, Group, Dial, Color Fax(Send only), On-hook Dial, Auto Redial, Caller ID, Secure Reception, Polling, MailBox, Fax forwarding, Junk Fax Block List, etc.	

Paper Handling	Input Capacity and Types	Standard: 520 (Cassette) x 2 + 100 (MP Tray), Max: 1,140(Standard) + 2,000(High Capacity Feeder, option)	
	Output Capacity and Type	Standard: 500 (Center Output Tray), Max: 3,250 (Booklet Finisher, option) + 150 (Right Tray, option)	Standard: 500 (Center Output Tray) + 150 (Right Tray), Max: 3,250 (Booklet Finisher, option) + 150 (Right Tray)
	Media Size	Cassette: 148 x 210 mm ~ 3 05 x 457 mm / MP Tray: 98 x 148 mm ~ 320 x 457 mm	
	Media Type	Bond, Index, Cover, Color, Recycled, Pre-printed, Punched, Cotton, Letterhead, Transparency, Envelope, Label	
	ADF Capacity	100 (DADF)	
	ADF Document Size	A3, A4 LEF, A4 SEF, A5 LEF, A5 SEF, B4, B5 LEF, B5 SEF	
	Envelope Capacity	10 Sheets (MP Tray)	
General	LCD	8.9" Color Touch-Panel LCD, 1024 x 600 (WSVGA)	
	Memory/Storage	1GB(Max:2GB)/ 250 GB(Usable Space: 88GB)	
	OS Compatibility	Windows 2000/XP/2003/Vista/2008/7, Mac OS X10.5 ~ 10.6, Linux	
	Interface	USB 2.0 Device, USB 2.0 Host, Ethernet 10/100/1000 BASE TX	
	Noise Level	27dBA (Sleep Mode), 37dBA (Ready), 51dBA (Printing), 54dBA (Copying)	
	Dimension (WxDxH)	677.5 x 763 x 927.8 mm (including DADF)	
	Certification	CCC(ISO15408), IEEE P2600-2008 Compliance, WHQL	
	Network Security	SSL/TLS, IP sec, SNMPv3, IPv6, Protocol & Port Management, IP/MAC filtering	
	Power Consumption	Max 1.5kW(Ready : 250W, Low power : 50W, Sleep : 11W)	