

EPSON[®]



Epson Dot Matrix Range

Epson is the world's largest manufacturer of dot matrix printers with a product range that offers the ultimate in high speed, low cost, reliable and durable printing across all stationery types. Ideal for drafting, high volume data processing, and multi-part stationery – for which there is simply no alternative – no other technology offers such broad capability from a single machine.

Offering a wider choice than any other manufacturer – and spanning every duty cycle, from light to heavy duty – the Epson dot matrix range enables you to strike exactly the right balance between capability, performance and cost. And built to the standards which have made the Epson brand synonymous with reliability, Epson dot matrix printers are not only competitively priced, but extremely economical to run.

Epson 9-pin dot matrix printers

Featuring durable, heavy and medium duty printers for continuous data processing and high speed drafting tasks – while offering competitively priced low cost printers – the Epson 9-pin dot matrix range offers exceptional value.

Outstanding performance combined with high precision alignment and sophisticated paper handling enables this truly comprehensive range of narrow and wide carriage printers to tackle the widest range of high speed printing tasks with supreme accuracy, making them ideal for commercial, industrial and logistic applications – including data processing, invoicing, stock requisitions, cheque runs, label printing etc.

Epson 24-pin dot matrix printers

Offering all the features available across the Epson 9-pin range, but with the addition of scalable fonts and letter quality, for superior print quality, Epson 24-pin printers are ideal for front desk applications in the retail and service industries, and for tasks such as invoice and order printing.

The range is further enhanced with flat-bed printers that enable 24-pin printing to be achieved on less flexible materials and a wide variety of non-standard stationery such as receipts and label printing.



Product Index

	9-Pin	24-Pin	POS	Instore	Accounting	Listing
L LX-300+	■		●●●			●
M LX-1170	■		●●	●●		●
Hi FX-890	■		●	●●●	●●●	●●
Hi FX-2190	■			●●●	●●●	●●
Hv DFX-5000+	■			●●●	●●●	●●●
Hv DFX-8500	■			●●●	●●●	●●●
L LQ-300+		■	●●●			
M LQ-590		■	●●	●●●	●●●	●●
L LQ-630/630S		■	●●	●		
M LQ-680/680Pro		■	●●	●●●		
M LQ-2090		■		●●●	●●●	●●
Hi LQ-2180		■		●●●	●●●	●●●
Hv DLQ-3500		■		●●●	●●	●●●

Usage Key

L light

M medium

Hi high

Hv heavy



Epson LQ-630/LQ-630S



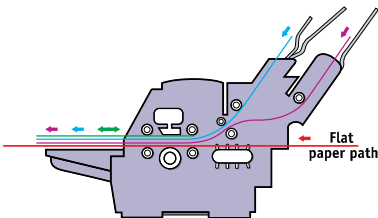
Epson LQ-590



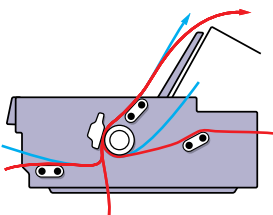
Epson DFX-8500

In their paper handling versatility, Epson dot matrix printers really excel. The advanced models offer paper feeding from up to six paper sources*, and enable up to four types of stationery to be held ‘on call.’ What’s more, when space is at a premium, multi-path paper feed gives you flexibility to position your printer without compromising its functionality.

Typical Paper Paths



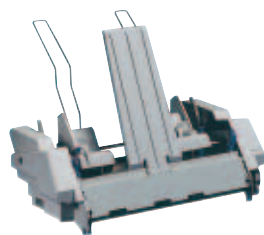
- Cut sheet manual feed front in – front out
- Optional 150 sheet cut sheet feeder
- Optional 50 sheet cut sheet feeder
- Tractor fed continuous



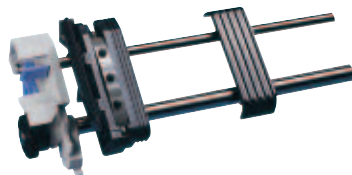
- Three continuous paper paths – front, rear, and bottom
- Two cut sheet paper paths – front and top

Optional equipment

A comprehensive range of Epson paper handling options includes:



Cut sheet feeders



Tractor unit

Cut sheet feeders

Offering 50, 150 and 250 sheet, for automatic selection of forms and plain stationery.

Motorised sheet feeders

For high volume cut sheet printing, optional motorised cut sheet feeders are available for selected products, like the 150 sheet cut sheet feeder for LQ-2180. Equipped with productivity enhancing, independent motor drives, these feeders reduce paper handling time and ensure optimum paper throughput.

Paper feed tractors

A choice of push, pull, and push/pull combined tractors not only enable more than one stationery type to be permanently loaded for delivery on demand, but handle continuous and multi-part stationery more efficiently.

Roll paper holder

This provides an inexpensive alternative to using continuous roll paper for applications requiring variable paper lengths.

*Using Epson paper handling options

Compatibility – ESC/P2

ESC/P (Epson Software Command/Printers) is the defacto standard dot matrix printer control language, worldwide. Adopted in the vast majority of popular software packages, ESC/P enables you to plug straight in – and print. The versatility and quality of Epson impact printing is further extended by ESC/P2 which enables Epson 24-pin printers to achieve scalable fonts and high resolution graphics.

Fully compatible with existing software, ESC/P2 is designed for use with non Windows® operating systems, enabling you to achieve font manipulation without the need for costly on-board processors. If you are working within the Windows® environment you will be able to achieve your printer's maximum speed by using printer resident fonts.

Connectivity

Epson connectivity goes far beyond USB, parallel and serial interfaces. Where Epson impact printers are required to serve either as a shared resource or as a personal printer within IBM or mainframe environments, we offer Ethernet, Wireless 802.11b, Twinax, Coax and LocalTalk interfaces.

For full details of interfacing options please refer to the options and specifications tables at the back of this brochure.

Epson supplies

Your Epson dot matrix printer demands Epson ribbons for high performance. Designed to withstand the stresses of everyday use, Epson ribbons come in three types – fabric, film and colour.

Epson fabric ribbons are highly durable and hold an exact charge of ink to ensure clear characters with no splattering. To minimise printhead wear, Epson ink includes lubricating oils.

Epson film ribbons are plastic, coated on one side with ink to give clear, crisp characters of letter quality output.

Colour printing

Colour printing highlights important information and gives clarity to forms. Epson colour ribbons are ultra tough and produce colourful results without bleed or smudging. An easily installed colour upgrade is available for selected printers. For full details of printing options please refer to the options and specifications tables at the back of this brochure.

Epson LX-300+

Because of its compact dimensions, the Epson LX-300+ is the ideal 9-pin printer for front and back office applications where space is limited. But also as a printer for measurement and control systems the Epson LX-300+ is a low cost solution. Auto switching standard serial and parallel interfaces are included allowing flexible standalone connectivity.

Key features

- Compact 9-pin narrow carriage printer
- Up to 337 characters per second (12cpi)
- Prints up to 5-part forms (1 original + 4 copies)
- Versatile top, bottom and rear paper paths
- 8 built-in Bar code fonts
- Auto switching parallel and serial interfaces

Options

- 50 sheet cut sheet feeder
- Roll paper holder
- Colour upgrade kit
- Pull tractor unit



9-Pin Dot Matrix Printer

Continuous Standard Optional Cut sheet Standard Optional

Epson LX-1170

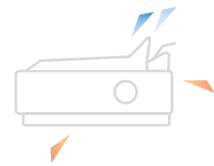
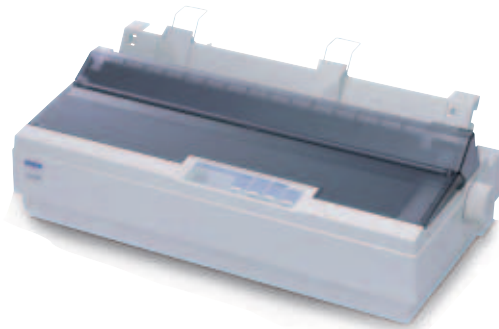
LX-1170 is the ideal 9-pin printer for light duties. The copy capability of one original plus four copies makes the LX-1170 suitable for a variety of environments including data reporting (e.g. telephone statistics and call log in, helpdesk and computer systems reporting), listings, shipping documents and measurement and control systems.

Key features

- Wide carriage 9-pin printer
- Up to 337 characters per second (12cpi)
- Prints up to 5-part forms (1 original + 4 copies)
- Versatile top, bottom and rear paper paths
- 8 built-in Bar code fonts
- Parallel and serial interfaces as standard

Options

- 50 sheet cut sheet feeder
- Roll paper holder
- Pull tractor



9-Pin Dot Matrix Printer

Epson FX-890

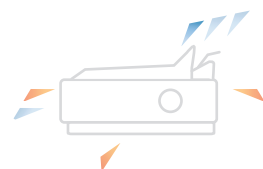
This narrow carriage printer combines high speed with the highest reliability. A mean volume between failure of 52 mill. lines makes it ideal for medium and large print volumes. Paper can be fed from front, top, rear or bottom and an optional push tractor can store a second continuous form – perfect for warehouses, wholesalers, freight forwarders and finance departments.

Key features

- Fastest printer in its class up to 680cps (12cpi)
- High copy capability of 6-part forms
- Extremely robust printer with a MTBF of 20,000 POH
- Reliable print head life of 400 mill. characters
- Long lasting ribbon of 7.5 mill. characters
- Versatile front, top, bottom and rear paper paths

Options

- Optional wireless and wired network interfaces
- Optional 150 or 50 sheet cut sheet feeders
- Optional front sheet or paper guides
- Optional push/pull tractor unit
- Optional roll paper holder



9-Pin Dot Matrix Printer

Continuous Standard Optional Cut sheet Standard Optional

Epson FX-2190

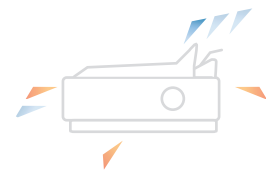
This wide carriage printer combines high speed printing with outstanding reliability. A mean volume between failure of 52 mill. lines makes the printer suitable for medium and large print volumes. The paper can flexibly be fed from front, top, rear or bottom and an optional push tractor can store a second continuous form, which is ideal for commercial and industrial environments.

Key features

- Fastest printer in its class up to 680cps (12cpi)
- High copy capability of 6-part forms
- Extremely robust printer with a MTBF of 20,000 POH
- Reliable print head life of 400 mill. characters
- Long lasting ribbon of 12 mill. characters
- Versatile front, top, bottom and rear paper paths

Options

- 150 sheet cut sheet feeder
- 50 sheet cut sheet feeder
- Front sheet guide
- Front paper guide
- Push/pull tractor unit
- Roll paper holder
- Wired and wireless network interfaces



9-Pin Dot Matrix Printer

Epson DFX-5000+

A professional printer for professional applications, the Epson DFX-5000+ is a high performance machine built for heavy duty, high throughput data processing tasks, bringing Epson paper handling, performance and durability to data intensive applications. The Epson DFX-5000+ comes equipped with twin high speed tractor feeds allowing continuous paper to be loaded both from front and rear.

Key features

- High speed printing of up to 560cps
- Very reliable printer you would expect from Epson
- Flexible paper handling with standard twin tractors
- Prints up to 6-part forms (1 original + 5 copies)
- Automatic paper thickness adjustment
- Advanced connectivity (parallel/serial interfaces)
- Interface slot for optional network interfaces

Options

- Pull tractor unit
- Network interface



9-Pin Dot Matrix Printer

Epson DFX-8500

The Epson DFX-8500 is a workhorse printer providing supreme reliability for the most demanding high volume printing.

Its advanced paper handling accommodates a variety of paper types while the standard front and rear push tractors can be switched easily between different types of continuous paper. An optional perforation cutter provides paper finishing capabilities.

Key features

- Fast and reliable 2x9-pin wide carriage printer
- Extremely fast print speed up to 1,120cps
- Prints up to 7-part forms (1 original + 6 copies)
- Automatic platen gap adjustment
- Interface slot for optional network interfaces
- Optional paper cutter for paper path changes
- Optional perforation cutter to separate print outs

Options

- Pull tractor unit
- Perforation cutter
- Network interface



9-Pin Dot Matrix Printer

Epson LQ-300+

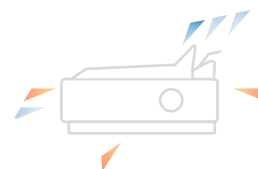
The compact Epson LQ-300+ is the ideal printer for front and back office applications as well as for measurement and control systems where space is rather limited. The copy capability of one original plus three copies makes the 24-pin printer suitable for POS applications where reliable light duty printing is required.

Key features

- Compact 24-pin narrow carriage printer
- Up to 300 characters per second
- Prints up to 4-part forms (1 original + 3 copies)
- Versatile top, bottom and rear paper paths
- 8 built-in Bar code fonts
- Auto switching parallel and serial interfaces

Options

- 50 sheet cut sheet feeder
- Roll paper holder
- Colour upgrade kit
- Pull tractor unit



24-Pin Dot Matrix Printer

Continuous Standard Optional Cut sheet Standard Optional

Epson LQ-590

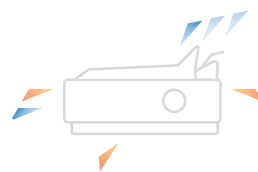
With a mean volume between failure of 40 mill. lines and a high speed of 529cps this extremely robust printer is ideal for medium and large print volumes. Flexible paper management allows insertion from front, top, rear, and bottom, while a front sheet guide enables front feeding of small paper. Typical applications are label, barcode and POS invoice printing.

Key features

- Very high print speed of up to 529cps (12cpi)
- High copy capability of 5-part forms
- Extremely robust printer with a MTBF of 20,000 POH
- Reliable print head life of 400 mill. strokes/wire
- Long lasting ribbon of 5 mill. characters
- Versatile front, top, bottom and rear paper paths
- Sound reduction down to 49 dB(A) in low-noise mode

Options

- 150 sheet cut sheet feeder
- 50 sheet cut sheet feeder
- Front paper guide
- Push/pull tractor unit
- Roll paper holder
- Wired and wireless network interfaces



24-Pin Dot Matrix Printer

Epson LQ-630/LQ-630S

With a 38.6cm x 30.6cm (w x d) footprint, a column length of 80 characters, and print speed of up to 360cps, these printers are ideal for restricted space environments such as retail stores, doctors' surgeries, ticket offices and industrial, trade and service companies. Both include USB interfaces for fast connection, plus parallel (Epson LQ-630) or serial (Epson LQ-630S) connectivity.

Key features

- Compact and robust design
- Prints up to 5-part forms (1 original + 4 copies)
- Print speed up to 360cps (12cpi)
- Also prints on small cut sheet paper (9cm x 7cm)
- Flatbed technology for ergonomic front paper feed
- LQ-630: parallel and USB v1.1 interfaces
- LQ-630S: serial and USB v1.1 interfaces

Options

- Wired and wireless network interfaces



24-Pin Dot Matrix Printer

Epson LQ-680/LQ-680Pro

This highly durable printer has a straight, flat paper path for ultra reliable flatbed printing. The Epson LQ-680Pro also includes automatic platen gap adjustment for optimised print quality and optimised paper feeding – ideal for frequent changing between different paper types. It handles paper with varying thickness (e.g. overlapping forms and labels), and has simple push button paper source selection (e.g. between cut sheet and continuous paper).



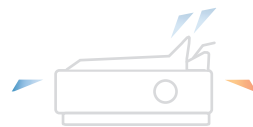
Key features

- Reliable and durable 24-pin flat bed printer
- 106 columns printing width
- Prints up to 6-part forms (1 original + 5 copies)
- Prints up to 413 characters per second
- Standard parallel interface
- Automatic paper thickness adjustment¹
- Push button paper source selection¹

Options

- 150 sheet cut sheet feeder
- 50 sheet cut sheet feeder*
- Roll paper holder
- Network interface

*150 Sheet cut sheet feeder must be fitted first
¹For the Epson LQ-680Pro



24-Pin Dot Matrix Printer

Epson LQ-2090

An extremely robust printer with a mean volume between failure of 40 mill. lines. With its high speed of 529 cps it is the ideal solution for medium and large print volumes. The Epson LQ-2090 impresses by its flexible paper management which allows paper insertion from front, top, rear, and bottom. A front paper guide makes it easy to insert small paper from the front.



Key features

- Very high print speed of up to 529cps (12cpi)
- High copy capability of 5-part forms
- Extremely robust printer with a MTBF of 20,000 POH
- Reliable print head life of 400 mill. strokes/wire
- Long lasting ribbon of 8 mill. characters
- Versatile front, top, bottom and rear paper paths
- Sound reduction down to 50 dB(A) in low-noise mode

Options

- 150 sheet cut sheet feeder
- 50 sheet cut sheet feeder
- Front sheet guide
- Push/pull tractor unit
- Roll paper holder
- Wired and wireless network interfaces



24-Pin Dot Matrix Printer

Continuous Standard Optional Cut sheet Standard Optional

Epson LQ-2180

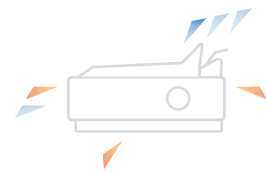
This fast, flexible and very reliable printing solution is ideal for high volume applications. A high speed draft mode of up to 480cps ensures maximum productivity, while versatility is assured by two standard tractors for flexible changing between media, the ability to handle up to 6-part forms and the choice of top, bottom and rear paper paths.

Key features

- Robust and durable 24-pin wide carriage printer
- Very high print speed up to 480cps
- Prints up to 6-part forms (1 original + 5 copies)
- Two push tractors standard
- Versatile front, top, bottom and rear paper paths (43)
- Standard parallel interface

Options

- 50 sheet cut sheet feeder
- 50 sheet cut sheet feeder
- Network interface
- Pull tractor unit
- Roll paper holder



24-Pin Dot Matrix Printer

Epson DLQ-3500

This printer offers ultra reliable printing at heavy duty print speed. An ability to print on 8-part forms is especially useful for multiple copy forms and labels, while up to three media paths provide versatile paper handling – front sheet feed with auto loading, rear tractor feed with paper park, and an optional automatic cut sheet feeder. Both black and colour fabric ribbons are supplied.

Key features

- Wide carriage 24-pin flat-bed printer
- Very fast print speed up to 550cps
- Prints up to 8-part forms (1 original + 7 copies)
- Push button paper source selection
- Automatic paper thickness adjustment
- Parallel and USB interfaces with optional Ethernet interfaces (63)
- Colour printing by using colour ribbons

Options

- 50 sheet cut sheet feeder
- Automatic sheet alignment unit
- Wireless and wired network interfaces



24-Pin Dot Matrix Printer

Options, accessories and supplies

Epson 9-pin

Optional paper handling	Order code	LX-300+	LX-1170	FX-890	FX-2190	DFX-5000+	DFX-8500
Colour upgrade kit	C12C832082	•					
Convertible tractor unit	C12C800202			•			
	C12C800212				•		
	C12C800302	•					
	C12C800341		•				
Pull tractor unit	C12C800352					•	•
Paper roll holder	C12C811141	•	•	•	•		
Front paper guide	C12C814022			*5 •			
	C12C814032				*5 •		
Front sheet guide	C12C814001			*6 •			
	C12C814011				*6 •		
50 sheet cut sheet feeder	C12C806372	•		•			
	C12C806392		•		•		
150 sheet cut sheet feeder	C12C806382			•			
	C12C806402				•		
Paper cutter	C12C815002						•
Perforation cutter	C12C815072						•

Supplies

Black fabric ribbon	C13S015019	•					
Black fabric ribbon	C13S015020		•				
Black fabric ribbon	C13S015055					•	•
Black fabric ribbon refill	C13S015025					•	•
Black fabric ribbon	C13S015329			•			
Black fabric ribbon	C13S015327				•		
Colour fabric ribbon	C13S015073	•					

Optional interfaces

Serial 0K buffer	C12C823061			•	•	•	•
Serial 32K buffer	C12C823081			•	•	•	•
Parallel 32K bi-directional	C12C823453			•	•	•	•
EpsonNet 10/100 Base Tx Int. print server	C12C823914			•	•	•	•
Coax	C12C823142			•	•	•	•
Twinax	C12C823152			•	•	•	•
LocalTalk	C12C823122					•	•
EpsonNet 802.11b wireless Ext. print server (240V)	C12C823972			•	•		
EpsonNet 802.11b wireless Ext. print server (220V)	C12C823971			•	•		

Warranty

Standard 1 year return to base		•	•	•	•		
Standard 1 year on-site						•	•
Optional extension to 3 years	ECPGRP10	•					
	ECPGRP20		•	•			
	ECPGRP30				•		
	ECPGRP60					•	
	ECPGRP70						•

*3 150 sheet cut sheet feeder must be fitted first

*5 can be used in conjunction with front continuous paper feeding

*6 cannot be used in conjunction with front continuous paper feeding

Specifications

Epson 9-pin

	LX-300+		LX-1170		FX-890		FX-2190		DFX-5000+		DFX-8500	
Part numbers	C11C294141DA		C11C406003DA		C11C276101DA		C11C244141DA		C11C117011DA		C11C204171DA	
Carriage width in columns	80		136		80		136		136		136	
Print speeds	10 cpi	12 cpi	10 cpi	12 cpi	10 cpi	12 cpi	10 cpi	12 cpi	10 cpi	12 cpi	10 cpi	12 cpi
Ultra high speed draft					566	680	566	680				
High speed draft	300	337	300	337	559	627	559	627	560	n/a	1120	n/a
Draft	225	270	225	270	419	503	419	503	420	504	840	1008
Near letter quality	56	67	56	67	104.6	125.9	104.6	125.9	84	101	210	252
Emulations												
Epson	LX ESC/ P		LX ESC/ P		FX ESC/ P		FX ESC/ P		FX ESC/ P		FX ESC/ P	
IBM / OKI	2380 Plus		2381 Plus		ProPrinter DS / ML		ProPrinter DS / ML		ProPrinter II		2381 Plus	
Paper handling features												
Auto paper loading	■		■		■		■		■		■	
Auto and manual tear off position	■		■		■		■		■		■	
Paper parking – continuous stationery	■		■		■		■		■		■	
Micro feed	■		■		■		■		■		■	
Automatic platen gap adjustment									■		■	
Cut sheet stationery												
Single sheet, paper, labels or envelopes	■		■		■		■					
Multi-part forms (original + copies)	1+4		1+4		1+5		1+5					
Front in top out	□		□		□		□					
Top in top out	■		■		■		■					
50 sheet cut sheet feeder	□		□		□		□					
150 sheet cut sheet feeder					□		□					
Combined 50/150 sheet cut sheet feeders					□		□					
Front paper guide					*5 □		*5 □					
Front sheet guide					*6 □		*6 □					
Roll paper	□		□		□		□					
Continuous stationery												
Single sheet or labels	■		■		■		■		■		■	
Multi-part (original + copies)	1+4		1+4		1+5 *9		1+5 *9		1+5 front 1+3 rear		1+6 front 1+5 rear	
Sheets with varying thickness									■		■	
Multipart with Overlap									■		■	
Rear in top out – push feed	■		■		■		■		■		■	
Rear in top out – push feed	■		■		■		■		□		□	
Rear in top out – push and pull feed	*1 □		*1 □		*1 □		*1 □		□		□	
Front in top out – push feed					■		■		■		■	
Front in top out – pull feed					■		■		□		□	
Front in top out – push and pull feed					*1 □		*1 □		□		□	
Bottom in top out – pull feed	■		■		■		■					
Two stationery types loaded at once					*1 □		*1 □		■		■	
Buffer	8 KB		8 KB		128 KB		128 KB		20 KB		128 KB	
Acoustic noise level	49 dB(A)		49 dB(A)		55 dB(A)		55 dB(A)		58 dB(A)		58 dB(A)	
Colour printing	□		□		□		□		□		□	
Fonts												
Epson draft	■		■		■		■		■		■	
Epson roman	■		■		■		■		■		■	
Epson sans serif	■		■		■		■		■		■	
Barcode fonts												
Code 128	■		■		■		■		■		■	
Code 39	■		■		■		■		■		■	
EAN-13	■		■		■		■		■		■	
EAN-8	■		■		■		■		■		■	
Interleave 2 of 5	■		■		■		■		■		■	
PostNet	■		■		■		■		■		■	
UPC-A	■		■		■		■		■		■	
UPC-E	■		■		■		■		■		■	
Interfaces												
USB	■		■		■		■		■		■	
Parallel	■		■		■		■		■		■	
Serial	■		■		□		□		■		■	
Ethernet print server					□		□		□		□	
802.11b wireless					□		□					
LocalTalk									□		□	
Coax					□		□		□		□	
Twinax					□		□		□		□	
Dimensions in millimetres												
Width	366 mm		546 mm		414 mm		589 mm		700 mm		700 mm	
Depth	275 mm		275 mm		350 mm		350 mm		382 mm		382 mm	
Height	159 mm		163 mm		167.5 mm		167.5 mm		369 mm		369 mm	
Weight	4.4 kg		6.3 kg		7.2 kg		9.4 kg		29 kg		29 kg	
MTBF (power on hours)	6,000		6,000		20,000		20,000		8,000		10,000	
Print head life (million strokes per wire)												
Black	400 m		400 m		400 m		400 m		300 m		400 m	
Colour	100 m				characters		characters		characters		characters	
Ribbon life (in million characters)												
Black ribbon	3 m		3 m		7.5 m		12 m		15 m		15 m	
Ribbon life (in characters)												
Colour ribbon												
Black	1 m											
Cyan	0.7 m											
Magenta	0.7 m											
Yellow	0.5 m											

■ = Standard

□ = Optional

s = Scalable from 2 to 32 point in 2 point steps

*1 requires additional convertible tractor unit option
 *2 requires two additional convertible tractor unit options
 *3 150 sheet cut sheet feeder must be fitted first
 *4 front feed only

*5 can be used in conjunction with front continuous paper feeding
 *6 cannot be used in conjunction with front continuous paper feeding
 *7 LQ-680 Pro only
 *8 LQ-630: USB/Parallel I/F LQ-630S: USB/Serial I/F
 *9 Multipart 1+6 copies when using pull feed

