

FS-C8008N

# discover

▶ a new era in cost-effective  
colour workgroup printing



▶ print ▶ copy ▶ scan ▶ fax

*Ecosys*<sup>®</sup>

 **KYOCERA**  
*mita*

## ► Are you ready for the change in colour printing?

Kyocera Mita's unique ECOSYS technology enables the FS-C8008N to introduce a new level of affordable colour printing\*.

With mono and colour printing both at up to 60% less per page than our competitors, plus superior paper handling options that offer stacking, sorting or stapling and finishing capabilities, the versatile FS-C8008N will fulfil all your business printing needs.

You get A4. You get A3. You get high-quality colour. You get easy use.

You get an easy fit to your office network. In fact, you won't believe how much you get for your money.



- Lower costs per page compared to any other monochrome or colour laser printer in its class.
- 31ppm mono / 8ppm colour A4 laser printer
- Universal cassettes support paper from A5 to A3
- Crisp 600dpi resolution
- 1,150 sheet input as standard from 3 sources (3,150 sheets from 7 sources max.)
- Full departmental paper handling options
- Fast 400MHz PowerPC processor
- Generous 128MB RAM (expandable to 256MB)
- Long-life drum and developer guaranteed 3 years\*
- FREE one year on-site warranty as standard
- Reduces consumables costs by typically 60%

\* or 600,000 pages, whichever comes first

disco

## ► The Kyocera Mita FS-C8008N

At Kyocera Mita we believe that everyone should enjoy inexpensive and effortless high-quality colour printing. So we have developed the Kyocera Mita FS-C8008N – a state-of-the-art office printer that will change the way you work. Although the FS-C8008N produces perfect black and white prints, it makes colour printing so easy and inexpensive that you will never want to confine yourself to printing in standard black and white again.

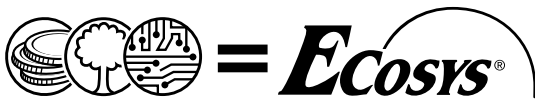


## ► ECOSYS

**ECOSYS. ECOnomy. ECOlogy. SYStem printing.**

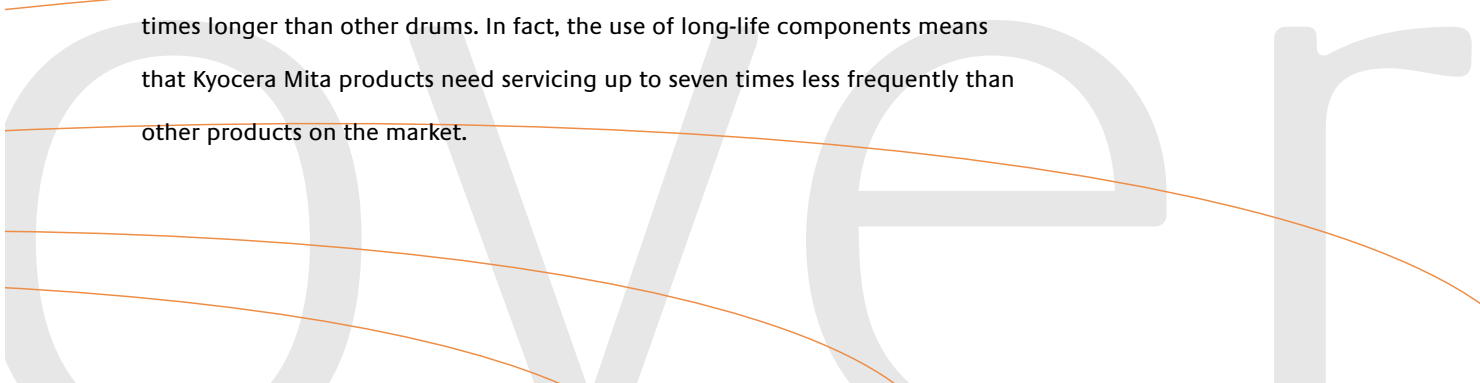
Thanks to ECOSYS technology on which the FS-C8008N is based, the drums and developers are designed to last up to 600,000 images (drums) and 400,000 pages (developers) before they need to be replaced. This means that not only is the FS-C8008N very reliable, and requires a lot less maintenance than comparable models, but the cost per page is very low and impact on the environment is minimised.

The FS-C8008N guarantees vibrant, exciting colour every time you press the print button. ECOSYS colour will also reduce the cost of producing your point-of-sale material, reports, training documents, presentations, and spreadsheets.



## ► Long-life components and cost-saving features

All Kyocera Mita products are built with long-life components that reduce your replacement and maintenance costs. You can save a lot of time and money by not having to change the toner so often. The Kyocera Mita drum works up to 25 times longer than other drums. In fact, the use of long-life components means that Kyocera Mita products need servicing up to seven times less frequently than other products on the market.



## ▶ Powerful job management functions

A variety of functions are available with the addition of a hard disk, which are known as enhanced Multiple Printing System (eMPS). These print functions are instantly and easily accessible, and they make printing more flexible and convenient than ever.

### QUICK COPY

The Quick copy function allows temporary storage of print data on the hard disk. Stored data can be re-printed anytime by operating the front panel, eliminating the need to resend from your PC.

### PROOF AND HOLD

Save on paper, toner and time. Print, check one copy and then specify number of remaining copies to be printed.

### PRIVATE PRINT

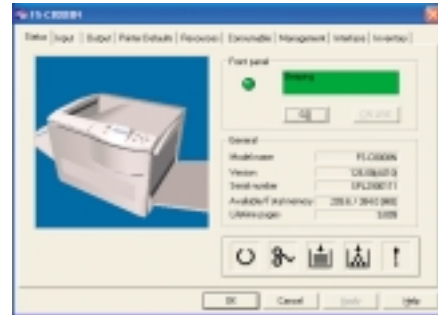
Send confidential or private documents to the printer and then start the printing process by entering a PIN number, specified by the printer driver, on the front panel.

### JOB STORAGE

Frequently used data can be stored on the printer's hard disk to be printed when needed from the front panel or via the job manager utility on your PC.

### VIRTUAL MAILBOX

Virtual mailbox provides sections on the hard disk for specific people, like a real mailbox. Documents sent to the virtual mailbox can be accessed through the printer's control panel, allowing you to print them at your convenience.



## ▶ KM-NET Viewer

KM-NET Viewer is an advanced network management software tool that is compatible with all Kyocera Mita printers and multifunctional products as well as those of other vendors. The settings of all printers on the network can be checked visually and amended from your PC. KM-NET Viewer also acts as a valuable, real-time early warning system. Printer problems are automatically forwarded from each printer via email to the PC of a specific person or member of staff (e.g. the network manager). He can then address the problem immediately, significantly reducing expensive downtime.



## ▶ Added network functionality

In addition to the standard network interface cards, the FS-C8008N supports a variety of additional network card functions such as Token Ring, Wireless, and Fibre Optic. The Internet Printing Protocol (IPP) enables you to send print jobs to a remote printer in a different building or even to a different country. The set-up configuration tool supports easy monitoring of the printer controller IB-21E via a web browser.



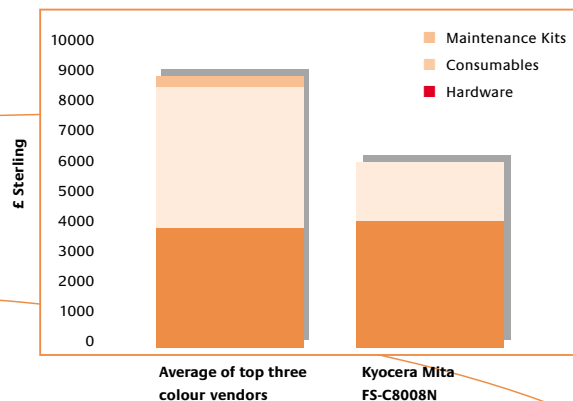
FS-C8008N with Document Finisher DF-31 and 2 extra Paper Feeders PF-30A

## ▶ Exploding the real financial costs of colour printing

Kyocera Mita reveals the hidden cost of traditional colour printing and introduces a new level of affordable colour printing.

### COST OF OWNERSHIP OVER 3 YEARS

Based on 2,000 full colour pages per month at RRP and 20% full colour page coverage



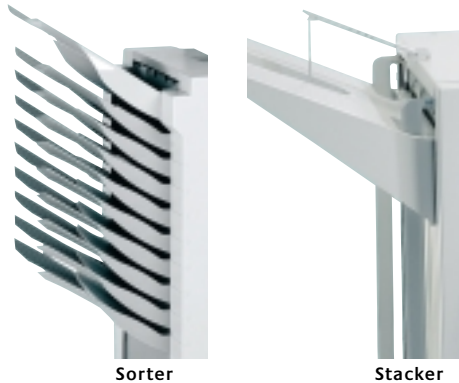
Produced using figures provided by Context ©, the independent IT analyst. Figures correct at time of going to press.

## ▶ Remote Operation Panel

The Remote Operation Panel function enables you to operate some of the printer panel settings via your PC. This saves a lot of time when you are performing daily tasks, since you do not have to go to the printer to execute this kind of task.



## ▶ Advanced document management



The Kyocera Mita FS-C8008N gives you a lot more than just brilliant colour. It is a high-speed, high-volume printer that delivers 31 pages per minute (ppm) mono, and 8ppm colour. It has a 1,150 sheet input as standard – with options for 3,150 sheets and features full departmental paper handling options.

All of which means that the FS-C8008N will fulfil all your business printing needs – now and well into the future.

## ▶ Fulfilling your business colour needs

The ability to use colour can provide many benefits for your business... Here are just a few examples of how the ECOSYS FS-C8008N can give you the competitive edge.

Use colour to enhance presentations, newsletters, mailers, posters and brochures to name but a few.



Mail Order



Marketing Departments



Real Estate Offices



Financial Departments



Engineering and building

# discover



▶ a new era in cost-effective colour workgroup printing with the FS-C8008N

*Bring the power of colour to your workgroup. Research has shown that using colour in a document improves comprehension, increases information retention and accelerates learning. Colour increases the impact of graphics, diagrams and illustrations. Colour attracts attention: highlight key information in colour and your message will be immediately more effective. Colour enhances your professional image: produce documents that look great and reflect your company's professionalism.*

# FS-C8008N

## Colour/Monochrome Printer

ECOSYS colour technology is based on extremely durable components. Because of its cartridge-free design, ECOSYS printers operate with the lowest cost per page in their class, and they are particularly eco-efficient. Thanks to their numerous paper options and modularity, all ECOSYS printers can develop to meet further requirements.

### System platform

The FS-C8008N delivers outstanding network connectivity and problem-free system administration. Kyocera Mita's single-platform technology means that the same driver can be used for every KM print device in the network: from single-user desktop printers to high-end multifunctional systems. Only Kyocera Mita offers this effortless combination of IT sophistication and high-performance paper handling expertise.

### GENERAL

**Technology:** Kyocera Mita Colour ECOSYS, laser  
**Type:** Workgroup  
**Engine speed:** Max. 31/15 pages A4/A3 per minute b/w mode, Max. 8/4 pages A4/A3 per minute full colour mode  
**Time to first print:** 17 seconds or less in b/w, 28 seconds or less in colour  
**Resolution:** 600 x 600 dpi Multi-Bit Technology for optimum colour output  
**Warm-up time:** 180 seconds or less  
**Duty cycle:** Max. 100,000 pages per month in b/w, Max. 25,000 pages per month in colour  
**Power source:** AC 220 ~ 240 V, 50/60 Hz  
**Power consumption:** Printing: 803 W, Stand-by: 196 W, Power saving mode: 26 W  
**Noise (ISO 7779):** Printing: 53 dB(A), Stand-by: 39 dB(A), Sleeping: 0 dB(A)  
**Dimensions (W x D x H):** FS-C8008N (incl. PF-30A or PD-800): 590 x 585 x 673 mm, PF-30A/PD-800: 560 x 566 x 251 mm  
**Weight:** FS-C8008N (incl. PF-30A): 95.4 kg, PF-30A: 19.1 kg, PD-800: 22.1 kg  
**Certification:** GS/TÜV/CE  
This printer is produced according to the quality norm ISO 9001 and the environmental guidelines ISO 14001

### PAPER HANDLING

All mentioned paper capacities are based on a paper thickness of max. 0,11 mm. Please use paper recommended by Kyocera Mita under normal environmental condition.

**Input capacity:** 500-sheets universal cassette x 2, 64-90 g/m<sup>2</sup>, A5-A3, 150 sheet multi-purpose tray, 64-220 g/m<sup>2</sup>, A6-A3, Envelopes, 500-sheet x 2 optional cassette 60-90 g/m<sup>2</sup>, A3, A4, A5, B4, B5, Max. 2 optional units, Max. capacity with options 3,150 sheets  
**Output capacity:** 500 sheets face-down with paper full sensor, 150 sheets face-up

### CONTROLLER

**Processor:** PowerPC 750CX / 400 MHz  
**Memory:** Standard 128 MB + ECOMemory, Max. 640 MB, 2 additional DIMM slots (32, 64, 128, 256 MB)  
**Emulations:** PCL6, PCL5c incl. P1L, KPDL3 (PostScript3 compatible), KC-GL (HP-GL 7550A), PDF direct print  
**Controller language:** PRESCRIBE IIc  
**Fonts:** 80 outline fonts (PCL5c), 1 Bitmap font, 136 outline

### PRESCRIBE IIe/IIc

With the Kyocera Mita page design and control language PRESCRIBE IIe/IIc, even complex graphics, logos and forms (even multipart forms) can be created independently of the system and saved and updated in the print controller. Consequently, integration into print files no longer applies. They are only accessed as required and therefore relieve the load on the network.

### Typefaces and barcodes

The 136 scalable PostScript fonts provide high flexibility for all applications. A total of 45 integrated barcodes are computed automatically by the printer and printed in the desired size, alignment and position.

### CompactFlash® card

The optional CompactFlash® card offers abundant storage space for typefaces, logos, standard forms and signatures as well as individual API or PRESCRIBE macros.

### Hard disk

The optional hard disk (HD-4) offers even more efficient document management. At the same time it enables the management of print data with eMPS functions such as quick copy, proof and hold, private print and job storage.

### KM-NET Viewer

KM-NET Viewer is an advanced network management software tool that is compatible with all Kyocera Mita printers and multifunctional products as well as those of other vendors by using the standardized protocol SNMP. The settings of all print devices on the network can be checked visually and amended from any Windows PC. KM-NET Viewer also acts as a valuable, real-time early warning system by sending eMail-Messages to users/administrators.

### INTERFACE / NETWORK

**Standard Interface:** High speed bi-directional parallel (IEEE 1284), USB (version 2.0), Fast Ethernet 10/100Base-TX, KUIO-LV slot for optional, 2nd parallel interface or RS-232C serial interface or network interface card.  
**Multiple Interface Connection (MIC):** MIC allows for simultaneous data transfer via up to four interfaces, with each interface having its own virtual printer

### CONSUMABLES

**TK-800Y Toner-kit:** Microfine toner yellow for 10,000 pages with 5 % coverage (A4).  
**TK-800M Toner-kit:** Microfine toner magenta for 10,000 pages with 5 % coverage (A4).  
**TK-800C Toner-kit:** Microfine toner cyan for 10,000 pages with 5 % coverage (A4).  
**TK-800K Toner-kit:** Microfine toner black for 25,000 pages with 5 % coverage (A4).

### OPTIONS

#### Paper handling

**PF-30A Paper feeder (max. 2 units):** 500-sheet x 2, 60-90 g/m<sup>2</sup>, A3, A4, A5, B4, B5  
**PD-800 Duplex unit with paper feeder:** 500-sheet x 1, 60-90 g/m<sup>2</sup>, A3, A4, A5, B4, B5  
**ST-30 Stacker:** 3,000 sheet face-up/face-down and document separation 60-200 g/m<sup>2</sup>, A3, A4, A5, B4, B5  
**DF-31 Document finisher:** 2,000 sheet face-up/face-down with document separation and stapler for 20 sheets  
**SO-30 Sorter:** 9 bins for 200 sheets each face-down, 1 bin for 100 sheets face-up incl. mailbox and stacker function  
**CA-31B Caster:** Set of wheels

#### Memory

**Printer memory expansion:** 2 slots (32, 64, 128, 256 MB DIMM)  
**CompactFlash® card:** 1 slot (8, 16, 32, 64 MB), forms, fonts, logos, macro storage  
**HD-4 Hard disk:** 10 GB, storage of data, forms, fonts + eMPS

#### Optional interfaces

10/100BaseTX Ethernet comes as standard with the FS-C8008N. If you have a requirement to connect to another network you can add another network card.

**Fast Ethernet IB-21e:** Internal multi-protocol 100BaseTX Ethernet interface

**Token Ring SB-60:** Internal multi-protocol 4/16Mbit Token Ring (STP/UTP) interface

**Fibre Optic SB-110FX:** Internal multi-protocol 100BaseFX Fibre Optic interface

**Fibre Optic SB-50:** Internal multi-protocol 10BaseFL Fibre Optic interface

**Wireless LAN SB-70:** Multi-protocol 11Mbit Wireless LAN internal interface

Multi-protocol network cards support the following operating systems: Novell Netware 3.x, 4.x, 5.x, UNIX, BS2000, Apple Systems 7.x, 8.x Windows 95, 98, ME, 2000, XP, Windows NT 3.x, 4.x And the following protocols: IPX/SPX (NDS, Binary, R/PRINT), TCP/IP (BOOTP, DHCP, RARP, ARP, IP, UCMIP, UDP, TCP, FTP, TFTP, LPD), WINS, SNMP, SMTP, Ethertalk/TokenTalk Phase 2, HTTP / HTML

### WARRANTY

1 year on-site warranty as standard. Kyocera Mita guarantees the drums for 3 years or 600,000 images and developers for 3 years or 400,000 pages (whichever occurs sooner), provided each printer is used and cleaned in accordance with the service instructions.



The up to 5 year on-site warranty extension for printer and options.



Your Kyocera Mita Business Partner:

Kyocera Mita (UK) Ltd, 8 Beacontree Plaza, Gillette Way, Reading RG2 0BS  
Tel 0118 931 1500, Fax 0118 931 1108, email: kyoceramita@kyoceramita.co.uk, www.kyoceramita.co.uk

Kyocera Mita does not warrant that any specifications mentioned will be error-free. Specifications are subject to change without notice. Information is correct at time of going to press. All other brand and product names may be registered trademarks or trademarks of their respective holders and are hereby acknowledged.

