



FlexScan LCD Monitors





If your first priority is quality, your first choice is EIZO.

At EIZO, our mission is clear: satisfying the most demanding users.

If your monitor is an important part of your working day, you are one of those users. Whether you're in brokerage, graphic design, finance, IT or a business field, your monitor greatly affects how effectively and how comfortably you work. We have specialized in creating the world's best monitors for over 20 years, with a total commitment to providing unrivaled quality and complete satisfaction.

Why do we have such confidence in our products? While others outsource, we continue to do our own R&D, manufacturing and quality control. Our longstanding commitment to this "do it ourselves" approach guarantees the highest quality, craftsmanship and reliability, while enabling us to develop and market innovative products and features at a faster pace.

This centralized approach results in a number of other advantages as well. EIZO monitors give you greater control over how things look



onscreen. Whether you're fine-tuning the color or setting the best viewing mode for your application, EIZO's leading-edge circuitry provides unmatched capabilities. Our ASIC (application specific integrated circuit) for example, incorporates ten years of improvements and enhancements, and now offers benefits like 12-bit gamma control and 16-bit internal processing and picture-in-picture.

EIZO monitors set the standard for ergonomics and flexibility, with features like ultra-slim bezels, easy positioning and a wide range of

mounting solutions.

All of our monitors comply with leading international safety and environmental standards, as well as with our own strict standard: EIZO Eco Products.

Finally, we offer the first five-year warranty in the industry, backed by a deep commitment to service and support.

If you appreciate quality, and insist on it above all else, EIZO monitors are your first choice.

These widescreen monitors are the high-end choice for graphic design, video editing, 3-D CAD, and other imaging tasks. Featuring a wide color gamut, uniform brightness across the screen, and fast response times, they are equally suitable for working with still or moving images.

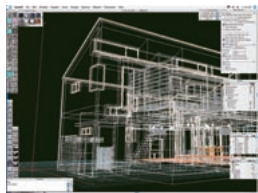


SX3031W 30" Color LCD Monitor

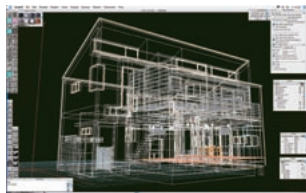
FEATURES

Widescreen Format

The widescreen 16:10 aspect ratio offers increased horizontal space so you can keep tool palettes open without covering the window you're working on. And because the 16:10 aspect ratio is almost the same as the 16:9 of many widescreen DVDs, you can enjoy movies with minimal black borders at the top and bottom of the screen.



4:3 aspect ratio



16:10 aspect ratio

Fast Response Time

An overdrive circuit is included to reduce midtone response time and ensure that movies and other moving images look clean and sharp with an absolute minimum of blurring and ghosting.



Without overdrive circuit

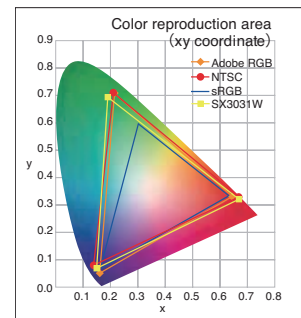


With overdrive circuit

Wide Gamut

These wide gamut LCD monitors reproduce 95% or more of the Adobe RGB color space so they can display

most colors in a photograph taken in Adobe RGB mode. Furthermore, an sRGB mode is included to accurately reproduce this narrower but commonly used color space. This ensures that colors meant for sRGB such as those used on web pages and any photos taken with a digital camera's sRGB mode will be reproduced on the screen as intended.



FlexScan SX3031W color gamut comparison

Brightness and Color Uniformity with DUE

Uniformity errors usually seen as brighter or darker areas on the screen are characteristic of LCD panels. A Digital Uniformity Equalizer (DUE) function corrects brightness and chroma uniformity errors so they are virtually unnoticeable.



Without DUE: uneven brightness distribution



With DUE: uniform brightness across the screen

12-Bit Gamma, 16-Bit Internal Processing

EIZO's latest integrated circuit is built-in and features a 12-bit look-up table with a color palette of 68

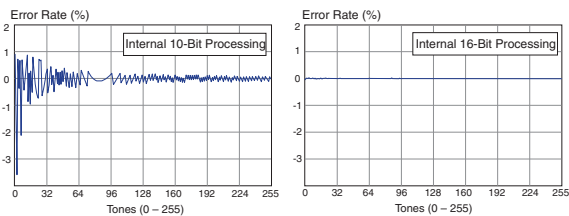


SX2761W 27" Color LCD Monitor



SX2461W 24" Color LCD Monitor

billion colors from which the most appropriate 16.7 million (8-bits) are displayed. It also has 16-bit internal processing for smooth display of grayscale tones, especially in dark areas of an image.



With 10-bit processing, the error rate is high in low tonal areas during calculation. With 16-bit processing, accuracy is significantly improved resulting in fewer conversion errors.

Optimized Brightness

The BrightRegulator function keeps the monitor at the ideal brightness level under all lighting conditions. A sensor on the front bezel takes readings of the ambient brightness and signals the backlight to adjust the screen brightness accordingly. Two user-determined reference points are used to allow the monitors to more accurately achieve the desired brightness in both brightly and dimly lit rooms (FlexScan SX2761W and SX2461W).

Two Monitors in One with Picture-By-Picture

Increase your work efficiency by dividing the screen into two equal halves of 1200 x 1600 and displaying input from two computers simultaneously. There is no distracting bezel between the two halves and no toggling back and forth between the two computers (FlexScan SX3031).

Color Vision Deficiency Simulation

To accommodate people with red-green color vision deficiency (protanopia and deuteranopia), care must be taken in choosing color schemes for things like maps, signage, indicator lights, etc. The FlexScan SX2761W and SX2461W instantly simulate how still and moving images appear to people with color vision deficiency, and does so much faster than software-based tools that slow down with larger files.



Original mode

Deuteranope mode

Zoner Photo Studio 9 Bundled

This popular digital photo editing software takes you through the whole process of managing and editing digital photos. A special "EIZO Edition" includes color management features to achieve true colors on-screen and on paper. (Included with FlexScan SX2761W and SX2461W and compatible with Windows 98/ME/2000/XP/Vista.)



Customer Assurance



Discover the versatility and full high definition capability of the FlexScan HD2441W. With dual PC and HDMI (High Definition Multimedia Interface) ports, it is not only ready to connect to your computers, but also lets you enjoy full HD content from game consoles and AV equipment at a 1920 × 1080 resolution. Images have greater contrast, look sharper, and seem more natural thanks to an EIZO next-generation integrated circuit originally developed for use in TVs. And sound from all connected devices can be routed to a single set of speakers. Connect to the FlexScan HD2441W and make the most of full high definition.

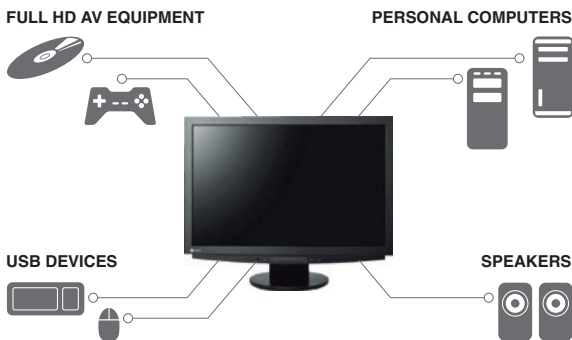


HD2441W **24"** Color LCD Monitor
Titanium Silver

FEATURES

Dual HDMI Connectors & 1920 × 1080 Full HD

Two HDMI (High Definition Multimedia Interface) connectors are provided for connecting to the latest HD entertainment equipment — which means the usual tangle of AV wires can be switched for a single slim cable accepting audio and video signals up to 1920 × 1080. DVI-D and D-Sub inputs are also included for PCs.



3000:1 Dynamic Contrast

EIZO's ContrastEnhancer adjusts the brightness, gain, and gamma for images that are too light or too dark to their ideal levels in real time. With moving images it

produces a dynamic contrast ratio of 3000:1, resulting in deep blacks and more lifelike images.



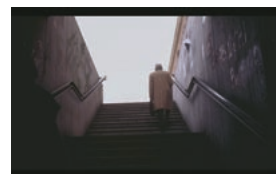
ContrastEnhancer off



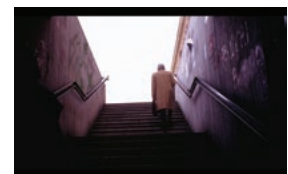
ContrastEnhancer on

Rich Tonal Reproduction

While computer monitors display tones from pure white to pure black in a range of 0 to 255, broadcast media and entertainment equipment display these same tones from 16 to 235. So, when computer monitors are used to display video or game content, images can often look dull and washed out. The HD2441W,



Black washout



No black washout



White / Silver



Black

however, can display video signals in the 16 to 235 range, so tones are displayed exactly as intended.

16:9 Full Mode Eradicates Overscan

When you watch a TV broadcast or view video, game or other content, you're usually missing part of the image. That's because a process called "overscanning" crops the picture on all four sides to provide stable, undistorted viewing. This can take away as much as 10% of the image — even when viewed at full HD resolution. The HD2441W, on the other hand, features an industry-first 16:9 Full mode that eliminates cropping, allowing the image to be seen in its entirety.



16:9 "normal" mode



16:9 full mode

Images in Overdrive with No Delay

An overdrive circuit reduces midtone response time to 6 ms and helps prevent ghosting during moving

picture playback. This circuit has minimal effect on "input lag" or the difference between the time a signal is inputted into the monitor and then shown on screen. Gamers can rest assured that their movements and those of their opponent are virtually synchronous with what they see on the screen.

Single Audio Output for All Sound Sources

An audio output jack routes the audio signal from any connected device — computer, game console, HD DVD player, etc. — to external speakers. Another jack is conveniently located on the side of the monitor for connecting headphones.

Picture-in-Picture

Displaying content from a PC on the main screen while showing video input on a sub screen, Picture-in-Picture lets you do two things at once — such as checking email while catching a sports game.

Customer Assurance



To bring widescreen benefits to trading floors, and back offices, EIZO introduces a new series of FlexScan monitors. Available in 24.1", 22", and 20.1" sizes with a choice of VA or TN technology, this series of six models meets a broad range of performance needs. Combining built-in features that reduce energy use and eye strain with a design that allows more open, better-fitting configurations, they will be welcomed by traders and business users alike.

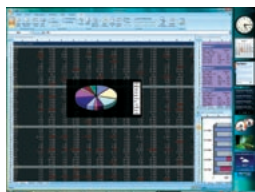


S2431W 24" Color LCD Monitor

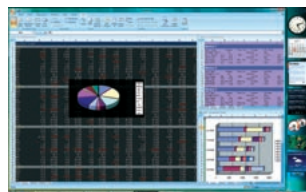
FEATURES

Widescreen Format

The wide format design (16:10 aspect ratio) offers increased horizontal space compared to conventional monitors so you can keep tool palettes open without covering the window you're working on.



4:3 aspect ratio



16:10 aspect ratio

Full Color Display & Detailed Color Control

All models come with 8-bit display for each RGB and 10-bit gamma correction. This produces 16.7 million displayable colors from a palette of over one billion for detailed rendering of similar shades of color. Color control options in the OSD menu include brightness, contrast, gamma, hue, saturation, gain, and color temperature. The S2231W has a wide color gamut that reproduces 92% of the Adobe RGB color space, which allows it to display a wider range of colors than conventional monitors and cover most of the CMYK spaces used in printing.

Optimized Brightness

The BrightRegulator function keeps the monitor at the ideal brightness level under all lighting conditions. A sensor on the front bezel takes readings of the ambient brightness and signals the backlight to adjust the screen brightness accordingly. In addition

to providing greater clarity, this also saves energy by dimming the screen when room brightness levels are low. If you prefer a constant brightness level regardless of ambient lighting, you can easily disable the BrightRegulator in the on-screen display menu.



Built-In Speakers

Dual 0.5 watt speakers are hidden away at the bottom of the bezel so as not to increase bezel size. If more volume is needed, the optional i-Sound L3 speaker unit (0.9 watts) is also available.

Fine Contrast Mode Selection

For optimum viewing of different kinds of content, EIZO's Fine Contrast function includes modes for office applications (Text mode), video clips (Movie mode), graphics (Picture mode), web browsing (sRGB mode), and user-defined settings (Custom mode). Switching between modes is done by pressing a button on the front panel or by using the bundled ScreenManager Pro for LCD software, which supports automatic mode switching such as changing to Text mode when an e-mail application is selected.

High Contrast Ratios

Contrast ratios are a maximum of 1000:1 for most models. This outstanding performance makes it easier to distinguish between similarly colored figures in large spreads of data, and so helps reduce reading errors.



S2231W 22" Color LCD Monitor



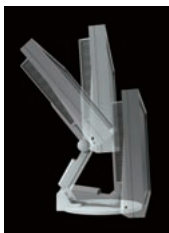
S2031W 20" Color LCD Monitor

Placement Flexibility

Three stand/mount options are available for meeting the different placement requirements of trading floors and back offices. A height adjustable stand offers 82 mm of height adjustment, tilt, swivel as well as pivot for portrait mode viewing. EIZO's EzUp stand provides even greater flexibility with more than 150 mm height adjustment, 25° tilt, 344° swivel, and portrait mode display. For installations that prepare their own mounting solutions but need to be able to quickly mount and demount their monitors, there is the QM1 quick mount attachment.



Height adjustable stand



EzUp stand



QM1 quick mount attachment

Built for Moving Image Playback

The inclusion of an overdrive circuit with three models (S2431W, S2231W, S2031W) provides smooth playback of moving images such as streaming video.

Digital and Analog Signal Support

DVI-I (digital or analog) and D-Sub (analog) inputs offer connection with one or two PCs. Switching among the inputs can be done with a front panel button.

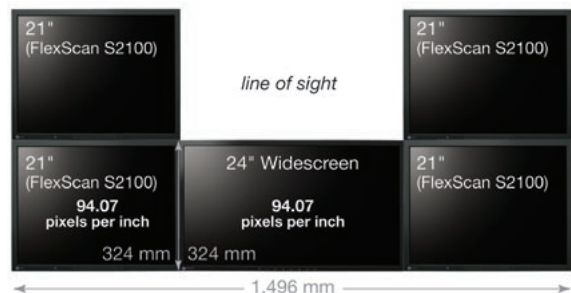
USB 2.0 Hub

A high speed (480 Mb/s) USB 2.0 hub includes one upstream and two downstream ports for connection of peripherals directly to the monitor.

Configurations Conducive To Trade

When these monitors are grouped with other EIZO monitors, they allow more open and better-fitting multi-panel configurations, such as in the diagram below, where the central widescreen monitor provides greater overall screen space with minimal bezel. Combining a 24" widescreen monitor with 21" monitors perfectly fits the standard 1,500 mm trading desk. This opens the line of sight so that traders can communicate without feeling fenced in. It also contributes to work safety as traders have better visibility in front of them.

21" and 24" Widescreen Trading Configuration



Customer Assurance



These monitors provide a wide range of EIZO's most sophisticated image and color control functions, making them ideal for CAD/CAM and graphics/image processing applications. Also welcome in call centers and offices, their thin bezel design saves valuable workspace. In terms of both performance and ergonomics, these models are well ahead of the competition.



L997 **21.3"** Color LCD Monitor

FEATURES

Fine Contrast Mode Selection

Choose from among six different Fine Contrast modes — Text, Picture, Movie, External, Custom and sRGB — for the one that best suits the kind of application you're using. (External mode not included with the FlexScan S2100 and S2000.)

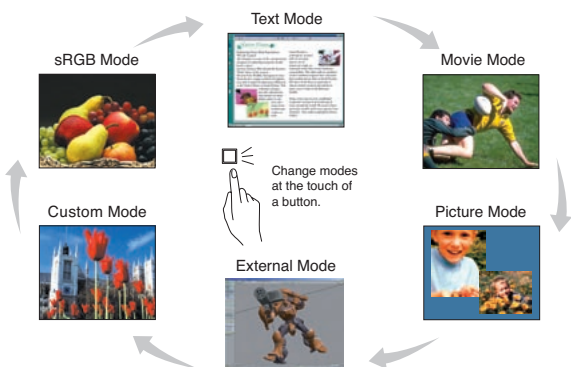


Image Mode Assignment

Part of the ScreenManager Pro for LCD utility software, this function lets you assign a Fine Contrast mode to a specific application. Whenever you use the application, the screen automatically changes to the assigned mode.

ActiveRotation II Portrait Mode Support

The FlexScan L997 introduces ActiveRotation II, an EIZO-exclusive function that provides built-in support for portrait mode. The monitor includes a gravity sensor, so it "knows" when it is being rotated and changes between portrait and landscape modes accordingly. Because it is hardware-based,

ActiveRotation II does not absorb CPU power or compromise graphics performance. It supports Windows 2000/XP and Mac OS 9/X platforms.



Graphics board support for ActiveRotation II varies by manufacturer and model. With some graphics boards, it may be necessary to change the resolution on the PC side or restart the computer after rotating the screen. For details on graphics board support, please see www.eizo.com/support/compatibility/

ActiveShot Picture-in-Picture Display

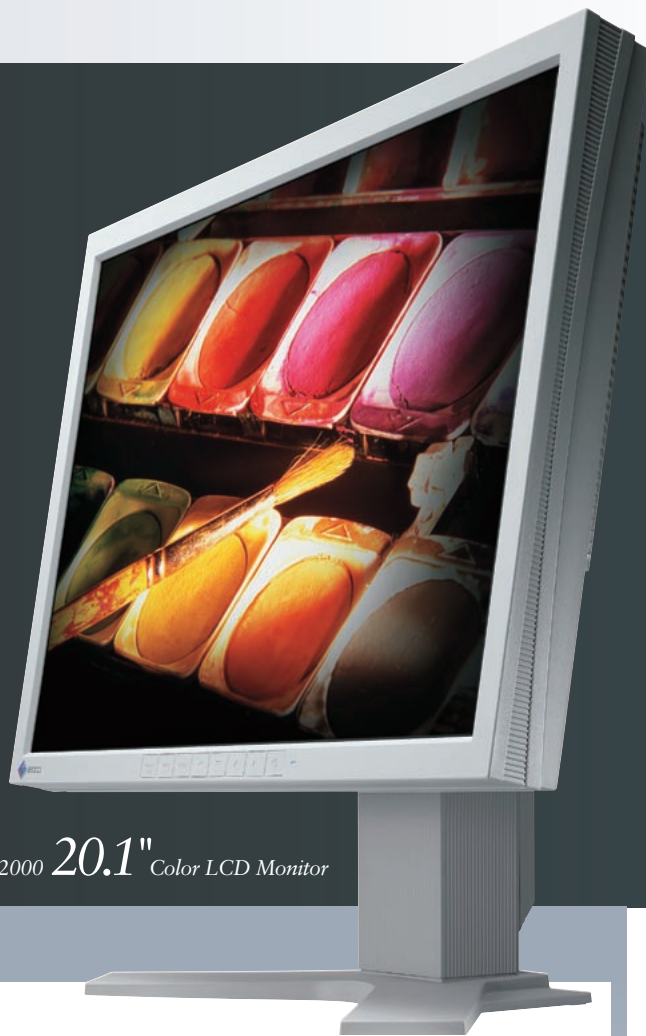
ActiveShot improves work efficiency by letting you use two computers simultaneously from a single monitor. Two picture-in-picture modes are available: Standard, which shows the entire screen from the second source, and Clip, which allows selection of any screen segment for viewing. You can assign main and sub-computers, select the size and position of the sub-window, and make the sub-window appear and disappear at the touch of a button (FlexScan L997).

Overdrive Circuit

Improves the midtone response time — the time required to transit between gray levels — to 8 ms,

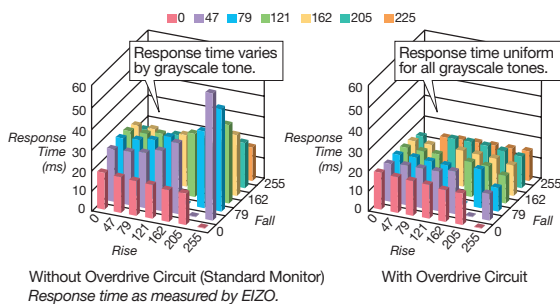


S2100 **21.3"** Color LCD Monitor



S2000 **20.1"** Color LCD Monitor

greatly reducing blurring in moving color images (FlexScan S2100 and S2000).



Accurate 14-Bit Color Processing

An EIZO-developed integrated circuit with 14-bit processing improves rendering of grayscale tones for a greater degree of detail than was previously possible, especially in dark areas of an image (FlexScan L997 and S2000).

BrightRegulator

A sensor on the front panel takes readings of the ambient brightness and signals the backlight to adjust the screen brightness accordingly (FlexScan S2100).

Color Space Emulation

Included in EIZO's ScreenManager Pro for LCD utility software, Color Space Emulation enables you to match your monitor to the color characteristics of other monitors, or to other color spaces. (FlexScan L997 and L797-U. Software is compliant with Windows 98SE/ME/2000/XP/Vista.)

Independent 6-Color Control

Easily accessible via the front panel buttons, you can use this function to independently adjust hue and saturation for each primary (red, green, blue) and secondary (cyan, magenta, yellow) color for precise adjustment of even a single color in an image (FlexScan L997, S2000 and L797-U).

Color Vision Deficiency Simulation

To accommodate people with red-green color vision deficiency (protanopia and deuteranopia), care must be taken in choosing color schemes for things like maps, signage, indicator lights, etc. The FlexScan L797-U instantly simulates how still and moving images appear to people with color vision deficiency, and does so much faster than software-based tools.

Brightness Stabilization

Constant, non-fluctuating brightness is necessary for the proper display of color. An EIZO-patented drift correction function quickly stabilizes the brightness level upon startup or wakeup. In addition, a sensor measures the backlight brightness of the LCD and compensates for any brightness fluctuations caused by the ambient temperature or the passage of time.

Customer Assurance



The FlexScan S1961 and L788-i are 19" monitors designed to meet the special requirements of financial and trading room environments. The FlexScan S1961 features the thinnest side bezels we have ever offered — only 6.9 mm wide — saving considerable desktop space, especially in multi-panel configurations. It also has a BrightRegulator function, providing optimum viewing in all types of light as well as energy savings. The FlexScan L788-i has dual DVI-I ports for analog/digital input versatility.



S1961 19" Color LCD Monitor

FEATURES

SlimEdge Design

Both of these models have thin bezels that save space on crowded desktops and trading areas. The FlexScan S1961 has ultra-slim side bezels of only 6.9 mm, ensuring near-seamless multi-panel configurations, while the FlexScan L788-i side bezels are 13 mm. Both models have 15 mm top and bottom bezels.

Versatile Positioning

Position the screen wherever you like with 100 mm height adjustment, 30° tilt, 70° swivel, and 90° pivot for portrait mode. Compliance with VESA standards allows for mounting on a movable arm or wall bracket.

Digital and Analog Support

The FlexScan L788-i provides input flexibility with dual DVI-I ports that accept either analog or digital inputs. The S1961 has one D-sub port for analog and one DVI-D port for digital.

High Contrast Ratios

Contrast ratios of 1500:1 for the FlexScan S1961 and 1000:1 for the FlexScan L788-i make images

on a dark background appear more vivid and ensures that colors retain their richness even in a brightly lit room.



500:1



1000:1

High Speed USB Hub

A built-in one-upstream, two-downstream 480 Mb/s USB hub provides easy connection of keyboard, camera and other peripherals directly through the monitor (FlexScan L788-i).

BrightRegulator

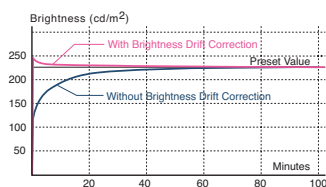
The FlexScan S1961 incorporates a BrightRegulator that automatically dims the screen's brightness when the ambient brightness decreases. This helps prevent eye fatigue and also saves energy.



L788-i 19" Color LCD Monitor

Brightness Stabilization

At startup or upon wakeup, an EIZO-patented drift correction function quickly stabilizes the brightness level. In addition, a sensor measures the backlight brightness and compensates for brightness fluctuations caused by the ambient temperature and the passage of time.



10-Bit Gamma Correction

Automatically takes 8-bit input signals (256 tones for each primary color) from the graphics board and uses a 10-bit look-up table (1,021 tones) to produce smoother, more accurate gradations of color.

3 Sync Formats

Supports separate sync, composite sync, and sync-on-green analog signals for compatibility with workstations and standard PCs (FlexScan L788-i).

Audio Capability

The FlexScan S1961 is available with or without dual 0.3 watt built-in speakers. They are hidden at the back of the cabinet so bezel size can be kept to a minimum. For both models, the optional i-Sound L3 attachable speaker unit with 0.9 watts is available.

Customer Assurance



S1961

L788-i

It can be difficult to find a monitor with the combination of features you want, but now EIZO has a solution: the Flexible Edition Monitors. A new series of seven different monitors that look and perform almost the same, yet give you a wide variety of size, panel, stand, speaker and color combinations. For office work, graphics like 3D CAD or entertainment, one or more of these models will fill the bill. And if you need to buy numerous monitors for people with varying needs, the Flexible Edition is the perfect choice.



S1932 19" Color LCD Monitor

FEATURES

A "Flexible" choice of monitors

The Flexible Edition models come in a variety of configurations, with variations in five categories, as described below. (Availability varies by country. Contact your official EIZO subsidiary or distributor for details.)



1. Monitor Size

The monitors come in 19" and 17" sizes.

2. Type of Panel and Options

Flexible Edition models are available with either VA or TN panels (VA is better for color work and off-center viewing, while TN provides faster response times and is more economical). Models with a VA panel include a USB upstream port, allowing the use of EIZO's ScreenManager Pro for LCD software. With this software, you can adjust color, screen, and volume settings with the mouse or keyboard instead of the monitor's control buttons. You can also use it to assign any of the monitor's imaging modes such as Text or sRGB to a particular application so that when the application is activated, the screen automatically changes to the assigned mode.

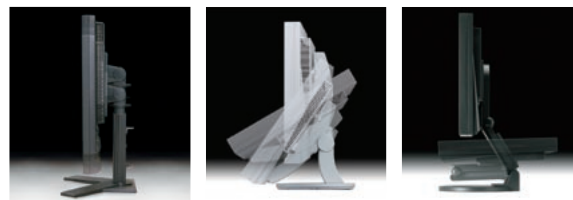
3. Speakers or No Speakers

You can choose your monitor with or without dual speakers. The speaker housings are on the back of the monitor; they don't obstruct your working space, so monitors fit neatly together in multi-panel configurations. The monitor itself looks the same whether you choose speakers or not. (Speakers are included as standard with the FlexScan S1932.)



4. Monitor Stand

Choose from three types of stands. The height adjustable stand offers height, tilt and swivel adjustment, and pivots for portrait mode. The ArcSwing stand provides a wide range of adjustment for screen tilt, distance, and vertical orientation. The EzUp stand offers added flexibility and viewing comfort by combining the adjustment capabilities of the other two stands.



Height adjustable stand ArcSwing stand EzUp stand

5. Color

All models are available in a choice of two colors: gray or black.



S1921 19" Color LCD Monitor



S1701 17" Color LCD Monitor

Uniform Design

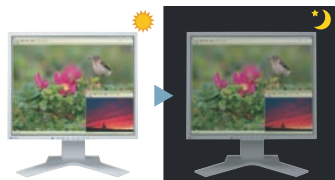
Despite all these variations, the Flexible Edition monitors present a unified appearance. You can use two different versions on your desktop and they will look the same. If you need to purchase many monitors for people in the company with different requirements, the Flexible Edition monitors allow you to maintain a consistent style.

Digital and Analog Support

With both DVI-D and D-Sub mini 15-pin inputs, you can use a computer that has either a digital or an analog graphics board (or both if connected to two computers), and quickly switch between the inputs via a front panel button.

BrightRegulator

This function keeps the monitor at the ideal brightness level under all lighting conditions. A sensor on the front bezel takes readings of the ambient brightness and signals the backlight to adjust the screen brightness accordingly. In addition to providing greater clarity, this also saves energy by dimming the screen when room brightness levels are low. If you prefer a constant brightness level regardless of ambient lighting, you can easily disable the BrightRegulator in the on-screen display menu.



Brightness Stabilization

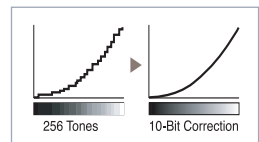
At startup or upon wakeup, an EIZO-patented drift correction function quickly stabilizes the brightness level. In addition, a sensor measures the backlight brightness and compensates for brightness fluctuations caused by the ambient temperature and the passage of time (FlexScan S1932, S1921, S1731, and S1721).

Fine Contrast Mode Selection

Text and sRGB imaging modes come as standard with all models. The FlexScan S1932 also includes Picture, Movie, and CAD modes for further functionality.

10-Bit Gamma Correction

Automatically takes 8-bit input signals (256 tones for each primary color) from the graphics board and uses a 10-bit look-up table (1,021 tones) to produce smoother, more accurate gradations of color (FlexScan S1932, S1921, S1731, S1721, and S1701).



Customer Assurance



The convenience of touch panel monitors makes them a practical choice for places like hospitals, factories, reception areas and retail shops. EIZO touch panel monitors offer superior color and clarity, and feature slim bezels on the top and sides to save space on the desk or counter. Finger touch is standard, with pen touch available when using the optional TP1 dedicated touch pen. EIZO offers a wide range of models to meet your specific requirements.



19" L760T-C
Touch Panel Color LCD Monitor

FEATURES

Analog Capacitive Screen

An analog capacitive panel provides fast touch response, extremely long touch life (minimum 225 million touches), and high optical clarity for performance and longevity. (All models but FlexScan T1501/T1502.)

Communications Protocols

The L760T-C, L362T, and T1501 offer a touch interface through an RS-232 serial port, and the L761T-C, L560T-C, L363T-C, and T1502 through a USB port.

High Image Quality

These high performance touch panels feature excellent contrast ratio and brightness, displaying vivid colors and sharp, clear images. Their viewing angles are wide (178° for the L761T-C, L760T-C and L560T-C), with minimal color shift when viewed from the side.

Brightness Stabilization

At startup or upon wakeup, an EIZO-patented drift correction function quickly stabilizes the brightness level. In addition, a sensor measures the backlight brightness and compensates for brightness fluctuations caused by the ambient temperature and the passage of time. (All models except the FlexScan T1501 and T1502.)

Digital and Analog Inputs

With both DVI-D and D-Sub mini 15-pin inputs, you can use a computer that has either a digital or an analog graphics board (or both if connected to two computers), and quickly switch between the inputs via a front panel button.

Auto Adjustment

Pressing a button on the front panel automatically adjusts four basic monitor parameters: clock pulse, phase, screen position, and range (analog signal only).

sRGB Mode

Sets the monitor to the international sRGB color space, for color matching with applications and peripherals like scanners, printers and digital cameras.

Versatile Positioning

Position the screen wherever you like with 82 mm height adjustment, 40° tilt and 70° swivel (FlexScan L761T-C, L760T-C and L560T-C). The power supply is built in, so there is no separate power brick or cord. All models comply with VESA mounting stan-



17" L560T-C
Touch Panel Color LCD Monitor



15" L363T-C
Touch Panel Color LCD Monitor

dards so the panel can be removed from the stand and placed on a movable arm or wall bracket.

Detailed Image Control

This function offers independent control of hue, saturation, and gain, and adjustment of color temperature in 500 K increments from 4,000 to 10,000 K (including 9,300 K) for accurate, natural display of color.

Touch Panel Pointer

For factories or other environments where gloves are required, the dedicated TP1 touch pen is available.



Product Information Display

The model name, serial number, and total usage time are all accessible in the OSD menu.

Customer Assurance

Most models meet the strictest medical, safety and EMC emission standards, including TÜV/GM, CE and UL2601-1. They also conform to EIZO's own strict Eco Products 2006, 2004, and 2002 environ-

mental criteria for design, manufacture, packaging and usage, including the introduction of lead-free solder and chrome-free steel plates.





FlexScan SX3031W

FlexScan SX2761W

Panel	Size and Type	76 cm (29.8") TFT color LCD panel		69 cm (27") TFT color LCD panel		
	Viewing Angles (H, V)	178°, 178° (at contrast ratio of 10:1)		178°, 178° (at contrast ratio of 10:1)		
	Brightness / Contrast	260 cd/m ² / 900:1		320 cd/m ² / 850:1		
	Response Time	On/Off: 12 ms (typical), Midtone ¹ : 6 ms (typical)		On/Off: 16 ms (typical), Midtone ¹ : 6 ms (typical)		
	Native Resolution	2560 × 1600 ²		1920 × 1200		
	Active Display Size (H × V)	641.3 × 400.8 mm		581.8 × 363.6 mm		
	Viewable Image Size	Diagonal: 756 mm		Diagonal: 686 mm		
	Pixel Pitch	0.2505 × 0.2505 mm		0.303 × 0.303 mm		
	Wide Gamut Coverage	97% of Adobe RGB, 100% vs. NTSC		95% of Adobe RGB, 92% vs. NTSC		
	Display Colors	16.77 million from a palette of 68 billion		16.77 million from a palette of 68 billion		
Available Cabinet Colors		Black		Gray, Black		
Dot Clock		Digital: 269 MHz		Analog: 202.5 MHz, Digital: 162 MHz		
Scanning Frequency (H, V)	Analog	-		24 – 94 kHz, 49 – 86 Hz		
	Digital	31 – 100 kHz, 59 – 61 Hz (VGA Text: 69 – 71 Hz)		31 – 76 kHz, 59 – 61 Hz (VGA Text: 69 – 71 Hz)		
Input Signals		Digital: DVI Standard 1.0		Analog: RGB Analog, Digital: DVI Standard 1.0		
Input Terminals		DVI-D 24 pin × 2 (dual link × 1, single link [HDCP supported ³] × 1)		DVI-I 29 pin × 2 (switchable) / HDCP supported ³		
USB Ports / Standard		1 upstream, 2 downstream / USB Standard Rev. 2.0		1 upstream, 2 downstream / USB Standard Rev. 2.0		
Plug & Play		VESA DDC 2B		VESA DDC 2B		
Power	Power Requirements	AC 100 – 120 V, 200 – 240 V: 50 / 60 Hz		AC 100 – 120 V, 200 – 240 V: 50 / 60 Hz		
	Power Consumption	170 W (maximum), 82 W (typical)		115 W (maximum), 53 W (typical)		
	Power Save Mode	Less than 2 W		Less than 1.7 W		
Physical Specifications	Height Adjustment Range	118 mm		118 mm		
	Tilt / Swivel / Pivot	40° Up, 3° Down / 35° Right, 35° Left / 90°		40° Up, 0° Down / 35° Right, 35° Left / 90°		
	Dimensions (W × H × D)	With Stand: 689 × 511.5 – 629.5 × 254.7 mm Without Stand: 689 × 450 × 90 mm		With Stand: 630 × 492.5 – 610.5 × 254.7 mm Without Stand: 630 × 412 × 86 mm		
	Net Weight	With Stand: 15.7 kg, Without Stand: 11.2 kg		With Stand: 13.2 kg, Without Stand: 8.7 kg		
Auto Brightness Functions		Auto Brightness Stabilization		Auto Brightness Stabilization, BrightRegulator		
Auto Power Save Functions		-		-		
Display Mode Options		Fine Contrast (Text, Picture, Movie, sRGB, Custom, WindowMovie ⁴), Auto Fine Contrast ⁵		Fine Contrast (Text, Picture, Movie, sRGB, Custom, WindowMovie ⁴), Auto Fine Contrast ⁵		
ScreenManager OSD Adjustment Functions	Screen Adjustment	Screen Size (full screen, enlarge, normal), Smoothing (5 stages), Border Intensity		Clock, Phase, Position, Resolution, Range Adjustment (Auto), Signal Filter, Screen Size (full screen, enlarge, normal), Smoothing (5 stages), Border Intensity		
	Color Adjustment	Brightness, Independent 6-Color Control, Gamma, Temperature (in 500 K increments from 4,000 K – 10,000 K including 9,300 K), Saturation, Hue, Gain, Reset		Brightness, Independent 6-Color Control, Gamma, Temperature (in 500 K increments from 4,000 K – 10,000 K including 9,300 K), Saturation, Hue, Gain, Reset		
	Power Save Settings	Analog	-		PowerManager (VESA DPMS)	
		Digital	PowerManager (DVI DMPM)		PowerManager (DVI DMPM)	
	Audio	-		-		
Other Settings	Input Priority, Signal Settings, Product Information (product name, serial number, resolution, operating time), OSD Menu Settings, Adjustment Lock, Languages (English, French, German, Italian, Japanese, Simplified Chinese, Spanish, Swedish, Traditional Chinese), Beep, Power Indicator, Dual Display ⁶ , Off Timer, Reset		Input Priority, Signal Settings, Product Information (product name, serial number, resolution, operating time), OSD Menu Settings, Adjustment Lock, Languages (English, French, German, Italian, Japanese, Simplified Chinese, Spanish, Swedish, Traditional Chinese), Beep, BrightRegulator, Power Indicator, Off Timer, Reset			
Audio		-		-		
Certifications and Standards		TCO'03, TÜV/Ergonomics (including ISO 13406-2), TÜV/GS, c-Tick, CE, CB, UL (cTÜVus), CSA (cTÜVus), FCC-B, Canadian ICES-003-B, TÜV/S, VCCI-B, EPA ENERGY STAR [®] , RoHS, WEEE, EIZO Eco Products 2006		TCO'99, TÜV/Ergonomics (including ISO 13406-2), TÜV/GS, c-Tick, CE, CB, UL (cTÜVus), CSA (cTÜVus), FCC-B, Canadian ICES-003-B, TÜV/S, VCCI-B, EPA ENERGY STAR [®] , RoHS, WEEE, EIZO Eco Products 2006		
Warranty		Five Years		Five Years		

¹ Average response time measured between each grayscale level of 31, 63, 95, 127, 159, 191, and 223. ² A graphics board that supports dual link is required for displaying 2560 × 1600 resolution. ³ Display with audio/video is not supported. ⁴ WindowMovie mode is selectable only when Auto Fine Contrast is active. ⁵ Bundled ScreenManager Pro for LCD is necessary to activate Auto Fine Contrast. Support for those functions varies with the graphics board used. ⁶ Dual 1200 × 1600 display is available with Dual Display mode. ⁷ For the FlexScan HD2441W, gain is available with the PC input only, and noise filter and I/P conversion are available with the video input only.



FlexScan SX2461W

FlexScan HD2441W

FlexScan S2431W

61 cm (24.1") TFT color LCD panel	61 cm (24.1") TFT color LCD panel	61 cm (24.1") TFT color LCD panel
178°, 178° (at contrast ratio of 10:1)	178°, 178° (at contrast ratio of 10:1)	178°, 178° (at contrast ratio of 10:1)
300 cd/m ² / 850:1	450 cd/m ² / 1000:1 (3000:1 Dynamic Contrast)	450 cd/m ² / 1000:1
On/Off: 16 ms (typical), Midtone ¹ : 6 ms (typical)	On/Off: 16 ms (typical), Midtone ¹ : 6 ms (typical)	On/Off: 16 ms, Midtone ¹ : 6 ms (typical)
1920 × 1200	1920 × 1200	1920 × 1200
518.4 × 324.0 mm	518.4 × 324 mm	518.4 × 324 mm
Diagonal: 611 mm	Diagonal: 611 mm	Diagonal: 611 mm
0.270 × 0.270 mm	0.270 × 0.270 mm	0.270 × 0.270 mm
96% of Adobe RGB, 92% vs. NTSC	–	–
16.77 million from a palette of 68 billion	16.77 million from a palette of 1.06 billion	16.77 million from a palette of 1.04 billion
Gray, Black	Titanium Silver, White/Silver, Black	Gray, Black
Analog: 202.5 MHz, Digital: 162 MHz	Analog: 162 MHz, Digital: 162.5 MHz	Analog: 202.5 MHz, Digital: 162 MHz
24 – 94 kHz, 49 – 86 Hz	PC Input: 31.5 – 80 kHz, 55 – 76 Hz	24 – 94 kHz, 49 – 86 Hz
31 – 76 kHz, 59 – 61 Hz (VGA Text: 69 – 71 Hz)	PC Input: 31.5 – 76 kHz, 59 – 61 Hz	31 – 76 kHz, 59 – 61 Hz (VGA Text: 69 – 71 Hz)
Analog: RGB Analog, Digital: DVI Standard 1.0	Analog: RGB Analog, Digital: DVI Standard 1.0	Analog: RGB Analog, Digital: DVI Standard 1.0
DVI-I 29 pin × 2 (switchable) / HDCP supported ⁵	PC Input: D-Sub mini 15 pin, DVI-D 24 pin (HDCP supported ⁵) AV Input: HDMI × 2	D-Sub mini 15 pin, DVI-I 29 pin (switchable), HDCP supported ⁵
1 upstream, 2 downstream / USB Standard Rev. 2.0	PC Input: 2 upstream, 2 downstream / USB Standard Rev. 2.0	1 upstream, 2 downstream / USB Standard Rev. 2.0
VESA DDC 2B	VESA DDC 2B	VESA DDC 2B
AC 100 – 120 V, 200 – 240 V: 50 / 60 Hz	AC 100 – 120 V, 200 – 240 V: 50 / 60 Hz	AC 100 – 120 V, 200 – 240 V: 50 / 60 Hz
110 W (maximum), 46 W (typical)	110 W (maximum), 48 W (typical)	110 W (maximum), 34 W (typical)
Less than 2 W	Less than 2 W	Less than 2 W
82 mm	90 mm	With Height Adjustable Stand: 82 mm With EzUp Stand: 153.1 mm
40° Up, 0° Down / 35° Right, 35° Left / 90°	60° Up, 5° Down / 172° Right, 172° Left / –	With Height Adjustable Stand: 40° Up, 0° Down / 35° Right, 35° Left / 90° With EzUp Stand: 25° Up, 0° Down / 172° Right, 172° Left / 90°
With Stand: 566 × 456 – 538 × 230 mm Without Stand: 566 × 367 × 85 mm	With Stand: 566 × 362.5 – 480 × 230 mm Without Stand: 566 × 396 × 92.3 mm	With Height Adjustable Stand: 566 × 456 – 538 × 208.5 mm With EzUp Stand: 566 × 380.4 – 533.5 × 279.9 – 307.6 mm Without Stand: 566 × 367 × 85 mm
With Stand: 11.0 kg, Without Stand: 7.4 kg	With Stand: 10.3 kg, Without Stand: 7.9 kg	With Height Adjustable Stand: 10.6 kg, With EzUp Stand: 12.4 kg, Without Stand: 7.6 kg
Auto Brightness Stabilization, BrightRegulator	Auto Brightness Stabilization, BrightRegulator	Auto Brightness Stabilization, BrightRegulator
–	Analog: VESA DPMS, Digital: DVI DMPM	–
Fine Contrast (Text, Picture, Movie, sRGB, Custom, WindowMovie ⁴), Auto Fine Contrast ⁵	PC Input: Fine Contrast (Text, Picture, Movie, sRGB, Custom, WindowMovie ⁴), Auto Fine Contrast ⁵ ; AV Input: Standard, Soft, Dynamic, Custom	Fine Contrast (Text, Picture, Movie, sRGB, Custom, WindowMovie ⁴), Auto Fine Contrast ⁵
Clock, Phase, Position, Resolution, Range Adjustment (Auto), Signal Filter, Screen Size (full screen, enlarge, normal), Smoothing (5 stages), Border Intensity	PC Input: Auto Screen, Auto Range, Clock, Phase, Position, Resolution, Signal Filter, Screen Size (Full Screen, Enlarge, Normal); AV Input: Screen Size (4:3, Letterbox, 16:9, 16:9 full)	Clock, Phase, Position, Range Adjustment (Auto), Signal Filter, Screen Size (full screen, enlarge, normal), Smoothing (5 stages), Border Intensity
Brightness, Independent 6-Color Control, Gamma, Temperature (in 500 K increments from 4,000 K – 10,000 K including 9,300 K), Saturation, Hue, Gain, Reset	Color Mode, Brightness, Contrast, Black Level, Temperature (in 500 K increments from 4,000 K – 10,000 K including 9,300 K), Saturation, Hue, Reset, Enhancer (Contrast, Outline), Gain ⁷ , Gamma, Noise Filter ⁷ , I/P Conversion ⁷	Brightness, Contrast, Gamma, Temperature (in 500 K increments from 4,000 K – 10,000 K including 9,300 K), Saturation, Hue, Gain, Reset
PowerManager (VESA DPMS)	–	PowerManager (VESA DPMS)
PowerManager (DVI DMPM)	–	PowerManager (DVI DMPM)
–	Volume, Treble, Bass, Balance, Sound Level	Volume (adjustable with front panel volume buttons)
Input Priority, Signal Settings, Product Information (product name, serial number, resolution, operating time), OSD Menu Settings, Adjustment Lock, Languages (English, French, German, Italian, Japanese, Simplified Chinese, Spanish, Swedish, Traditional Chinese), Beep, BrightRegulator, Power Indicator, Off Timer, Reset	Picture in Picture Settings, Language (English, French, German, Italian, Japanese, Simplified Chinese, Spanish, Swedish, Traditional Chinese), BrightRegulator, Signal Detection, Power Indicator, Beep, Auto Screen Size, Color Space, Field Rate, USB, Off Timer, Product Information, Reset, Adjustment Lock	Signal Switching, Product Information (product name, serial number, resolution, operating time), OSD Menu Settings, Adjustment Lock, DDC/CI Lock, Languages (English, French, German, Italian, Japanese, Simplified Chinese, Spanish, Swedish, Traditional Chinese), Beep, BrightRegulator, Power Indicator, Off Timer, Reset
–	PC Input Terminals: USB Audio × 2; AV Input Terminals: HDMI × 2; PC and AV Output Terminals: stereo mini jack, headphone jack	Dual 0.5 W build-in speakers, input / headphone jacks
TCO'03, TÜV/Ergonomics (including ISO 13406-2), TÜV/GS, c-Tick, CE, CB, UL (cTÜVus), CSA (cTÜVus), FCC-B, Canadian ICES-003-B, TÜV/S, VCCI-B, EPA ENERGY STAR [®] , RoHS, WEEE, EIZO Eco Products 2006	TCO'03 (white/silver and black cabinets only), TÜV/Ergonomics (including ISO 13406-2), TÜV/GS, c-Tick, CE, CB, UL (cTÜVus), CSA (cTÜVus), FCC-B, Canadian ICES-003-B, TÜV/S, VCCI-B, EPA ENERGY STAR [®] , RoHS, WEEE, EIZO Eco Products 2006	TCO'03, TÜV/Ergonomics (including ISO 13406-2), TÜV/GS, c-Tick, CE, CB, UL (cTÜVus), CSA (cTÜVus), FCC-B, Canadian ICES-003-B, TÜV/S, VCCI-B, EPA ENERGY STAR [®] , RoHS, WEEE, EIZO Eco Products 2006
Five Years	Five Years	Five Years

SPECIFICATIONS



FlexScan S2401W

FlexScan S2231W

Panel	Size and Type	61 cm (24.1") TFT color LCD panel		56 cm (22") TFT color LCD panel		
	Viewing Angles (H, V)	170°, 160° (at contrast ratio of 10:1) 178°, 178° (at contrast ratio of 5:1)		178°, 178° (at contrast ratio of 10:1)		
	Brightness / Contrast	360 cd/m ² / 1000:1		250 cd/m ² / 1500:1		
	Response Time	On/Off: 5 ms (typical), Midtone ¹ : -		On/Off: 16 ms (typical), Midtone ¹ : 8 ms (typical)		
	Native Resolution	1920 × 1200		1680 × 1050		
	Active Display Size (H × V)	518.4 × 324.0 mm		473.8 × 296.1 mm		
	Viewable Image Size	Diagonal: 611 mm		Diagonal: 558 mm		
	Pixel Pitch	0.270 × 0.270 mm		0.282 × 0.282 mm		
	Wide Gamut Coverage	-		92% of Adobe RGB, 92% vs. NTSC		
Display Colors	16.77 million from a palette of 1.04 billion		16.77 million from a palette of 1.04 billion			
Available Cabinet Colors		Gray, Black		Gray, Black		
Dot Clock		Analog: 202.5 MHz, Digital: 162 MHz		Analog: 150 MHz, Digital: 120 MHz		
Scanning Frequency (H, V)	Analog	24 – 94 kHz, 49 – 86 Hz		24 – 82 kHz, 49 – 86 Hz		
	Digital	31 – 76 kHz, 59 – 61 Hz (VGA Text: 69 – 71 Hz)		31 – 65 kHz, 59 – 61 Hz (VGA Text: 69 – 71 Hz)		
Input Signals		Analog: RGB Analog, Digital: DVI Standard 1.0		Analog: RGB Analog, Digital: DVI Standard 1.0		
Input Terminals		D-Sub mini 15 pin, DVI-I 29 pin / HDCP supported ² (switchable)		D-Sub mini 15 pin, DVI-I 29 pin (switchable), HDCP supported ²		
USB Ports / Standard		1 upstream, 2 downstream / USB Standard Rev. 2.0		1 upstream, 2 downstream / USB Standard Rev. 2.0		
Plug & Play		VESA DDC/CI, DDC 2B		VESA DDC/CI, DDC 2B		
Power	Power Requirements	AC 100 – 120 V, 200 – 240 V: 50 / 60 Hz		AC 100 – 120 V, 200 – 240 V: 50 / 60 Hz		
	Power Consumption	110 W (maximum), 34 W (typical)		75 W (maximum), 38 W (typical)		
	Power Save Mode	Less than 2 W		Less than 2 W		
Physical Specifications	Height Adjustment Range	With Height Adjustable Stand: 82 mm With EzUp Stand: 153.1 mm		With Height Adjustable Stand: 82 mm With EzUp Stand: 165 mm		
	Tilt / Swivel / Pivot	With Height Adjustable Stand: 40° Up, 0° Down / 35° Right, 35° Left / 90° With EzUp Stand: 25° Up, 0° Down / 172° Right, 172° Left / 90°		With Height Adjustable Stand: 40° Up, 0° Down / 35° Right, 35° Left / 90° With EzUp Stand: 25° Up, 0° Down / 172° Right, 172° Left / 90°		
	Dimensions (W × H × D)	With Height Adjustable Stand: 566 × 456 – 538 × 208.5 mm With EzUp Stand: 566 × 380.4 – 533.5 × 279.9 – 307.6 mm Without Stand: 566 × 367 × 85 mm		With Height Adjustable Stand: 507 × 439 – 521 × 230 mm With EzUp Stand: 507 × 351.5 – 516.5 × 279.9 – 296.4 mm Without Stand: 507 × 333 × 74 mm		
	Net Weight	With Height Adjustable Stand: 10.6 kg, With EzUp Stand: 12.4 kg, Without Stand: 7.6 kg		With Height Adjustable Stand: 11.2 kg, With EzUp Stand: 12.5 kg, Without Stand: 7.7 kg		
Auto Brightness Functions		Auto Brightness Stabilization, BrightRegulator		Auto Brightness Stabilization, BrightRegulator		
Auto Power Save Functions		-		-		
Display Mode Options		Fine Contrast (Text, Picture, Movie, sRGB, Custom, WindowMovie ³), Auto Fine Contrast ⁴		Fine Contrast (Text, Picture, Movie, sRGB, Custom, WindowMovie ³), Auto Fine Contrast ⁴		
ScreenManager OSD Adjustment Functions	Screen Adjustment	Clock, Phase, Position, Range Adjustment (Auto), Signal Filter, Screen Size (full screen, enlarge, normal), Smoothing (5 stages), Border Intensity		Clock, Phase, Position, Range Adjustment (Auto), Signal Filter, Screen Size (full screen, enlarge, normal), Smoothing (5 stages), Border Intensity		
	Color Adjustment	Brightness, Contrast, Gamma, Temperature (in 500 K increments from 4,000 K – 10,000 K including 9,300 K), Saturation, Hue, Gain, Reset		Brightness, Contrast, Gamma, Temperature (in 500 K increments from 4,000 K – 10,000 K including 9,300 K), Saturation, Hue, Gain, Reset		
	Power Save Settings	Analog	PowerManager (VESA DPMS)		PowerManager (VESA DPMS)	
		Digital	PowerManager (DVI DMPM)		PowerManager (DVI DMPM)	
	Audio (speaker option only)	Volume (adjustable with front panel volume buttons)		Volume (adjustable with front panel volume buttons)		
Other Settings	Signal Switching, Product Information (product name, serial number, resolution, operating time), OSD Menu Settings, Adjustment Lock, DDC/CI Lock, Languages (English, French, German, Italian, Japanese, Simplified Chinese, Spanish, Swedish, Traditional Chinese), Beep, BrightRegulator, Power Indicator, Off Timer, Reset		Signal Switching, Product Information (product name, serial number, resolution, operating time), OSD Menu Settings, Adjustment Lock, DDC/CI Lock, Languages (English, French, German, Italian, Japanese, Simplified Chinese, Spanish, Swedish, Traditional Chinese), Beep, BrightRegulator, Power Indicator, Off Timer, Reset			
Audio (speaker option only)		Dual 0.5 W built-in speakers, input / headphone jacks		Dual 0.5 W built-in speakers, input / headphone jacks		
Certifications and Standards		TCO'03, TÜV/Ergonomics (including ISO 13406-2), TÜV/GS, c-Tick, CE, CB, UL (cTÜVus), CSA (cTÜVus), FCC-B, Canadian ICES-003-B, TÜV/S, VCCI-B, EPA ENERGY STAR®, RoHS, WEEE, EIZO Eco Products 2006		TCO'03, TÜV/Ergonomics (including ISO 13406-2), TÜV/GS, c-Tick, CE, CB, UL (cTÜVus), CSA (cTÜVus), FCC-B, Canadian ICES-003-B, TÜV/S, VCCI-B, EPA ENERGY STAR®, RoHS, WEEE, EIZO Eco Products 2006		
Warranty		Five Years		Five Years		

¹ Average response time measured between each grayscale level of 31, 63, 95, 127, 159, 191, and 223. ² Display with audio/video devices is not supported. ³ WindowMovie mode is selectable only when Auto Fine Contrast is active. ⁴ Bundled ScreenManager Pro for LCD is necessary to activate Auto Fine Contrast. Support for those functions varies with the graphics board used.



FlexScan S2201W

56 cm (22") TFT color LCD panel
170°, 160° (at contrast ratio of 10:1) 178°, 178° (at contrast ratio of 5:1)
300 cd/m ² / 1000:1
On/Off: 5 ms (typical), Midtone ¹ : –
1680 × 1050
473.8 × 296.1 mm
Diagonal: 558 mm
0.282 × 0.282 mm
–
16.77 million from a palette of 1.04 billion
Gray, Black
Analog: 150 MHz, Digital: 120 MHz
24 – 82 kHz, 49 – 86 Hz
31 – 65 kHz, 59 – 61 Hz (VGA Text: 69 – 71 Hz)
Analog: RGB Analog, Digital: DVI Standard 1.0
D-Sub mini 15 pin, DVI-I 29 pin / HDCP supported ² (switchable)
1 upstream, 2 downstream / USB Standard Rev. 2.0
VESA DDC/CI, DDC 2B
AC 100 – 120 V, 200 – 240 V: 50 / 60 Hz
60 W (maximum), 31 W (typical)
Less than 1 W
With Height Adjustable Stand: 82 mm With EzUp Stand: 165 mm
With Height Adjustable Stand: 40° Up, 0° Down / 35° Right, 35° Left / 90° With EzUp Stand: 25° Up, 0° Down / 172° Right, 172° Left / 90°
With Height Adjustable Stand: 507 × 439 – 521 × 230 mm With EzUp Stand: 507 × 351.5 – 516.5 × 279.9 – 296.4 mm Without Stand: 507 × 333 × 74 mm
With Height Adjustable Stand: 10.2 kg, With EzUp Stand: 11.5 kg, Without Stand: 6.7 kg
BrightRegulator
–
Fine Contrast (Text, Picture, Movie, sRGB, Custom, WindowMovie ³), Auto Fine Contrast ⁴
Clock, Phase, Position, Range Adjustment (Auto), Signal Filter, Screen Size (full screen, enlarge, normal), Smoothing (5 stages), Border Intensity
Brightness, Contrast, Gamma, Temperature (in 500 K increments from 4,000 K – 10,000 K including 9,300 K), Saturation, Hue, Gain, Reset
PowerManager (VESA DPMS)
PowerManager (DVI DMPM)
Volume (adjustable with front panel volume buttons)
Signal Switching, Product Information (product name, serial number, resolution, operating time), OSD Menu Settings, Adjust- ment Lock, DDC/CI Lock, Languages (English, French, German, Italian, Japanese, Simplified Chinese, Spanish, Swedish, Traditional Chinese), Beep, BrightRegulator, Power Indicator, Off Timer, Reset
Dual 0.5 W built-in speakers, input / headphone jacks
TCO'03, TÜV/Ergonomics (including ISO 13406-2), TÜV/GS, c-Tick, CE, CB, UL (cTÜVus), CSA (cTÜVus), FCC-B, Canadian ICES-003-B, TÜV/S, VCCI-B, EPA ENERGY STAR®, RoHS, WEEE, EIZO Eco Products 2006
Five Years



FlexScan S2031W

51 cm (20.1") TFT color LCD panel
178°, 178° (at contrast ratio of 10:1)
300 cd/m ² / 900:1
On/Off: 16 ms (typical), Midtone ¹ : 8 ms (typical)
1680 × 1050
433.4 × 270.9 mm
Diagonal: 511 mm
0.258 × 0.258 mm
–
16.77 million from a palette of 1.04 billion
Gray, Black
Analog: 150 MHz, Digital: 120 MHz
24 – 82 kHz, 49 – 86 Hz
31 – 65 kHz, 59 – 61 Hz (VGA Text: 69 – 71 Hz)
Analog: RGB Analog, Digital: DVI Standard 1.0
D-Sub mini 15 pin, DVI-I 29 pin (switchable), HDCP supported ²
1 upstream, 2 downstream / USB Standard Rev. 2.0
VESA DDC/CI, DDC 2B
AC 100 – 120 V, 200 – 240 V: 50 / 60 Hz
70 W (maximum), 29 W (typical)
Less than 2 W
With Height Adjustable Stand: 82 mm With EzUp Stand: 165 mm
With Height Adjustable Stand: 40° Up, 0° Down / 35° Right, 35° Left / 90° With EzUp Stand: 25° Up, 0° Down / 172° Right, 172° Left / 90°
With Height Adjustable Stand: 469 × 427 – 509 × 208.5 mm With EzUp Stand: 469 × 339.5 – 504.5 × 279.9 – 291.9 mm Without Stand: 469 × 309 × 69.5 mm
With Stand: 9.6 kg, With EzUp Stand: 11.4 kg, Without Stand: 6.6 kg
BrightRegulator
–
Fine Contrast (Text, Picture, Movie, sRGB, Custom, WindowMovie ³), Auto Fine Contrast ⁴
Clock, Phase, Position, Range Adjustment (Auto), Signal Filter, Screen Size (full screen, enlarge, normal), Smoothing (5 stages), Border Intensity
Brightness, Contrast, Gamma, Temperature (in 500 K increments from 4,000 K – 10,000 K including 9,300 K), Saturation, Hue, Gain, Reset
PowerManager (VESA DPMS)
PowerManager (DVI DMPM)
Volume (adjustable with front panel volume buttons)
Signal Switching, Product Information (product name, serial number, resolution, operating time), OSD Menu Settings, Adjust- ment Lock, DDC/CI Lock, Languages (English, French, German, Italian, Japanese, Simplified Chinese, Spanish, Swedish, Traditional Chinese), Beep, BrightRegulator, Power Indicator, Off Timer, Reset
Dual 0.5 W built-in speakers, input / headphone jacks
TCO'03, TÜV/Ergonomics (including ISO 13406-2), TÜV/GS, c-Tick, CE, CB, UL (cTÜVus), CSA (cTÜVus), FCC-B, Canadian ICES-003-B, TÜV/S, VCCI-B, EPA ENERGY STAR®, RoHS, WEEE, EIZO Eco Products 2006
Five Years



FlexScan S2001W

51 cm (20.1") TFT color LCD panel
170°, 170° (at contrast ratio of 10:1) 176°, 176° (at contrast ratio of 5:1)
300 cd/m ² / 1000:1
On/Off: 5 ms (typical), Midtone ¹ : –
1680 × 1050
433.4 × 270.9 mm
Diagonal: 511 mm
0.258 × 0.258 mm
–
16.77 million from a palette of 1.04 billion
Gray, Black
Analog: 150 MHz, Digital: 120 MHz
24 – 82 kHz, 49 – 86 Hz
31 – 65 kHz, 59 – 61 Hz (VGA Text: 69 – 71 Hz)
Analog: RGB Analog, Digital: DVI Standard 1.0
D-Sub mini 15 pin, DVI-I 29 pin / HDCP supported ² (switchable)
1 upstream, 2 downstream / USB Standard Rev. 2.0
VESA DDC/CI, DDC 2B
AC 100 – 120 V, 200 – 240 V: 50 / 60 Hz
60 W (maximum), 24 W (typical)
Less than 1 W
With Height Adjustable Stand: 82 mm With EzUp Stand: 165 mm
With Height Adjustable Stand: 40° Up, 0° Down / 35° Right, 35° Left / 90° With EzUp Stand: 25° Up, 0° Down / 172° Right, 172° Left / 90°
With Height Adjustable Stand: 469 × 427 – 509 × 208.5 mm With EzUp Stand: 469 × 339.5 – 504.5 × 279.9 – 291.9 mm Without Stand: 469 × 309 × 69.5 mm
With Height Adjustable Stand: 8.7 kg, With EzUp Stand: 10.5 kg, Without Stand: 5.7 kg
BrightRegulator
–
Fine Contrast (Text, Picture, Movie, sRGB, Custom, WindowMovie ³), Auto Fine Contrast ⁴
Clock, Phase, Position, Range Adjustment (Auto), Signal Filter, Screen Size (full screen, enlarge, normal), Smoothing (5 stages), Border Intensity
Brightness, Contrast, Gamma, Temperature (in 500 K increments from 4,000 K – 10,000 K including 9,300 K), Saturation, Hue, Gain, Reset
PowerManager (VESA DPMS)
PowerManager (DVI DMPM)
Volume (adjustable with front panel volume buttons)
Signal Switching, Product Information (product name, serial number, resolution, operating time), OSD Menu Settings, Adjust- ment Lock, DDC/CI Lock, Languages (English, French, German, Italian, Japanese, Simplified Chinese, Spanish, Swedish, Traditional Chinese), Beep, BrightRegulator, Power Indicator, Off Timer, Reset
Dual 0.5 W built-in speakers, input / headphone jacks
TCO'03, TÜV/Ergonomics (including ISO 13406-2), TÜV/GS, c-Tick, CE, CB, UL (cTÜVus), CSA (cTÜVus), FCC-B, Canadian ICES-003-B, TÜV/S, VCCI-B, EPA ENERGY STAR®, RoHS, WEEE, EIZO Eco Products 2006
Five Years

SPECIFICATIONS



FlexScan L997

FlexScan S2100

Panel	Size and Type	54 cm (21.3") TFT color LCD panel		54 cm (21.3") TFT color LCD panel		
	Viewing Angles (H, V)	170°, 170° (at contrast ratio of 10:1)		178°, 178° (at contrast ratio of 10:1)		
	Brightness / Contrast	250 cd/m ² / 550:1		300 cd/m ² / 1000:1		
	Response Time	On/Off: 30 ms (typical), Midtone ¹ : –		On/Off: 16 ms (typical), Midtone ¹ : 8 ms (typical)		
	Native Resolution	1600 × 1200		1600 × 1200		
	Active Display Size (H × V)	432 × 324 mm		432 × 324 mm		
	Viewable Image Size	Diagonal: 540 mm		Diagonal: 540 mm		
	Pixel Pitch	0.270 × 0.270 mm		0.270 × 0.270 mm		
Display Colors	16.77 million from a palette of 1.06 billion		16.77 million from a palette of 1.06 billion			
Available Cabinet Colors		Gray, Black		Gray, Black		
Dot Clock		Analog: 202.5 MHz, Digital: 162 MHz		Analog: 162 MHz, Digital: 162 MHz		
Scanning Frequency (H, V)	Analog	24 – 100 KHz, 49 – 86 Hz		24 – 80 KHz, 49 – 76 Hz		
	Digital	31 – 100 KHz, 59 – 61 Hz (VGA Text: 69 – 71 Hz)		31 – 76 kHz, 59 – 61 Hz (VGA Text: 69 – 71 Hz)		
Input Signals		Analog: RGB Analog, Digital: DVI Standard 1.0		Analog: RGB Analog, Digital: DVI Standard 1.0		
Input Terminals		DVI-I 29 pin × 2 (switchable)		D-Sub mini 15 pin, DVI-I 29 pin (switchable)		
USB Ports / Standard		1 upstream, 2 downstream / USB Standard Rev. 2.0		1 upstream, 2 downstream / USB Standard Rev. 2.0		
Plug & Play		VESA DDC 2B		VESA DDC 2B		
Power	Power Requirements	AC 100 – 120 V, 200 – 240 V: 50 / 60 Hz		AC 100 – 120 V, 200 – 240 V: 50 / 60 Hz		
	Power Consumption	75 W (maximum)		70 W (maximum)		
	Power Save Mode	Less than 2 W		Less than 2 W		
Physical Specifications	Height Adjustment Range	82 mm		82 mm		
	Tilt / Swivel / Pivot	40° Up, 0° Down / 35° Right, 35° Left / 90°		40° Up, 0° Down / 35° Right, 35° Left / 90°		
	Dimensions (W × H × D)	With Stand: 472 × 459 – 541 × 208.5 mm Without Stand: 472 × 373 × 69 mm		With Stand: 465 × 453 – 535 × 208.5 mm Without Stand: 465 × 361 × 64 mm		
	Net Weight	With Stand: 10.2 kg, Without Stand: 7.0 Kg		With Stand: 9.7 kg, Without Stand: 6.7 kg		
Auto Brightness Functions		Auto Brightness Stabilization		Auto Brightness Stabilization, BrightRegulator		
Auto Power Save Functions		–		Analog: VESA DPMS, Digital: DVI DMPM		
Display Mode Options		Fine Contrast (Text, Picture, Movie, sRGB, Custom, External, WindowMovie ²), Auto Fine Contrast ³		Fine Contrast (Text, Picture, Movie, sRGB, Custom, WindowMovie ²), Auto Fine Contrast ³		
Hardware Portrait Display Function		ActiveRotation II ⁴		–		
Picture in Picture Function		ActiveShot ⁴		–		
ScreenManager OSD Adjustment Functions	Screen Adjustment	Clock, Phase, Position, Resolution, Range Adjustment (Auto), Signal Filter, Screen Size (full screen, enlarge, normal), Smoothing (5 stages), Border Intensity, Picture in Picture (sub window size, position, contrast)		Clock, Phase, Position, Resolution, Range Adjustment (Auto), Signal Filter, Screen Size (full screen, enlarge, normal), Smoothing (5 stages), Border Intensity		
	Color Adjustment	Brightness/Contrast, Emulation ³ , Independent 6-Color Control, Gamma, Temperature (in 500 K increments from 4,000 K – 10,000 K), Saturation, Hue, Gain, Reset		Brightness, Gamma, Temperature (in 500 K increments from 4,000 K – 10,000 K), Saturation, Hue, Gain, Reset		
	Power Save Settings	Analog	PowerManager (VESA DPMS)		–	
		Digital	PowerManager (DVI DMPM)		–	
	Audio (speaker option only)	–		–		
Other Settings	Signal Settings, Input Priority, Product Information (product name, serial number, resolution, operating time), OSD Menu Settings, Power Indicator, Adjustment Lock, Languages (English, French, German, Italian, Japanese, Spanish, Swedish), Off Timer, Reset		Signal Settings, Input Priority, Product Information (product name, serial number, resolution, operating time), OSD Menu Settings, Bright Regulator, Power Indicator, Adjustment Lock, Languages (English, French, German, Italian, Japanese, Spanish, Swedish), Off Timer, Reset			
Audio (speaker option only)		–		–		
Certifications and Standards		TCO'03 (gray), TCO'99 (black) TÜV/Ergonomics (including ISO 13406-2), TÜV/GS, c-Tick, CE, CB, UL (cTÜVus), CSA (cTÜVus), FCC-B, Canadian ICES-003-B, TÜV/S, VCCI-B, EPA ENERGY STAR®, CCC, RoHS, WEEE, EIZO Eco Products 2004		TCO'03, TÜV/Ergonomics (including ISO 13406-2), TÜV/GS, c-Tick, CE, CB, UL (cTÜVus), CSA (cTÜVus), FCC-B, Canadian ICES-003-B, TÜV/S, VCCI-B, EPA ENERGY STAR®, CCC, RoHS, WEEE, EIZO Eco Products 2004		
Warranty		Five Years		Five Years		

¹ Average response time measured between each grayscale level of 31, 63, 95, 127, 159, 191, and 223. ² WindowMovie mode is supported by the Microsoft® Windows® 2000/XP operating systems only and is selectable only when Auto Fine Contrast is active. ³ Bundled ScreenManager Pro for LCD software is necessary to activate Auto Fine Contrast and Emulation. It is compatible with the Windows 2000/XP/Vista operating systems only.

⁴ ActiveRotation and ActiveShot cannot be used simultaneously.



FlexScan S2000

51 cm (20.1") TFT color LCD panel
178°, 178° (at contrast ratio of 10:1)
300 cd/m ² / 1000:1
On/Off: 16 ms (typical), Midtone ¹ : 8 ms (typical)
1600 × 1200
408 × 306 mm
Diagonal: 510 mm
0.255 × 0.255 mm
16.77 million from a palette of 1.06 billion
Gray, Black
Analog: 202.5 MHz, Digital: 162 MHz
24 – 94 kHz, 49 – 86 Hz
31 – 76 kHz, 59 – 61 Hz (VGA Text: 69 – 71 Hz)
Analog: RGB Analog, Digital: DVI Standard 1.0
D-Sub mini 15 pin, DVI-I 29 pin (switchable)
1 upstream / USB Standard Rev. 2.0
VESA DDC 2B
AC 100 – 120 V, 200 – 240 V: 50 / 60 Hz
64 W (maximum)
Less than 2 W
82 mm
40° Up, 0° Down / 35° Right, 35° Left / 90°
With Stand: 443 × 446 – 528 × 208.5 mm Without Stand: 443 × 347 × 69 mm
With Stand: 9.0 Kg, Without Stand: 6.0 Kg
Auto Brightness Stabilization
–
Fine Contrast (Text, Picture, Movie, sRGB, Custom, WindowMovie ²), Auto Fine Contrast ³
–
–
Clock, Phase, Position, Resolution, Range Adjustment (Auto), Signal Filter, Screen Size (full screen, enlarge, normal), Smoothing (5 stages), Border Intensity
Brightness, Gamma, Temperature (in 500 K increments from 4,000 K – 10,000 K), Saturation, Hue, Gain, Independent 6-Color Control, Reset
PowerManager (VESA DPMS)
PowerManager (DVI DMPM)
–
Signal Settings, Input Priority, Product Information (product name, serial number, resolution, operating time), OSD Menu Settings, Power Indicator, Adjustment Lock, Languages (English, French, German, Italian, Japanese, Spanish, Swedish), Off Timer, Reset
–
TCO'03, TÜV/Ergonomics (including ISO 13406-2), TÜV/GS, C-Tick, CE, CB, UL (cTÜVus), CSA (cTÜVus), FCC-B, Canadian ICES-003-B, TÜV/S, VCCI-B, EPA ENERGY STAR®, RoHS, WEEE, EIZO Eco Products 2006
Five Years



FlexScan L797-U

48 cm (19") TFT color LCD panel
170°, 170° (at contrast ratio of 10:1)
280 cd/m ² / 450:1
On/Off: 20 ms (typical); Midtone ¹ : –
1280 × 1024
376.3 × 301 mm
Diagonal: 481 mm
0.294 × 0.294 mm
16.77 million from a palette of 1.06 billion
Gray, Black
Analog: 135 MHz, Digital: 108 MHz
30 – 82 kHz, 49 – 86 Hz
30 – 65 kHz, 59 – 61 Hz (VGA Text: 69 – 71 Hz)
Analog: RGB Analog, Digital: DVI Standard 1.0
DVI-I 29 pin × 2 (switchable)
1 upstream, 2 downstream / USB Standard Rev. 2.0
VESA DDC 2B
AC 100 – 120 V, 200 – 240 V: 50 / 60 Hz
60 W (maximum)
Less than 3 W
100 mm
40° Up, 1° Down / 35° Right, 35° Left / 90°
With Stand: 414 × 409.5 – 509.5 × 202.7 mm Without Stand: 414 × 340 × 62 mm
With Stand: 8.1 kg, Without Stand: 5.8 kg
Auto Brightness Stabilization
–
Fine Contrast (Text, Picture, Movie, sRGB, Custom, External, WindowMovie ²), Auto Fine Contrast ³
–
–
Clock, Phase, Position, Resolution, Range Adjustment (Auto), Signal Filter, Screen Size (full screen, enlarge, normal), Smoothing (5 stages), Border Intensity
Brightness, Emulation ³ , Independent 6-Color Control, Gamma, Temperature (in 500 K increments from 4,000 K – 10,000 K), Saturation, Hue, Gain, Reset
PowerManager (VESA DPMS)
PowerManager (DVI DMPM)
–
Signal Settings, Input Priority, Product Information (product name, serial number, resolution, operating time), OSD Menu Settings, Power Indicator, Adjustment Lock, Languages (English, French, German, Italian, Japanese, Spanish, Swedish), Off Timer, Reset
–
Color Universal Design Organization certified mark, TCO'03 (gray), TCO'99 (black) TÜV/Ergonomics (including ISO 13406-2), TÜV/GS, c-Tick, CE, CB, UL (cTÜVus), CSA (cTÜVus), FCC-B, Canadian ICES-003-B, TÜV/S, VCCI-B, CCC, RoHS, WEEE, EIZO Eco Products 2002
Five Years



FlexScan S1961

48 cm (19") TFT color LCD panel
178°, 178° (at contrast ratio of 10:1)
250 cd/m ² / 1500:1
On/Off: 20 ms (typical), Midtone ¹ : –
1280 × 1024
376 × 301 mm
Diagonal: 481 mm
0.294 × 0.294 mm
16.77 million from a palette of 1.06 billion
Gray, Black
Analog: 135 MHz, Digital: 108 MHz
24.8 – 80 kHz, 50 – 75 Hz
31 – 64 kHz, 59 – 61 Hz (VGA Text: 69 – 71 Hz)
Analog: RGB Analog, Digital: DVI Standard 1.0
D-Sub mini 15 pin, DVI-D 24 pin (switchable)
1 upstream / USB Standard Rev. 2.0
VESA DDC 2B
AC 100 – 120 V, 200 – 240 V: 50 / 60 Hz
40 W (maximum)
Less than 1 W
100 mm
30° Up, 0° Down / 35° Right, 35° Left / 90°
With Stand: 392.4 × 404.9 – 504.9 × 205 mm Without Stand: 392.4 × 330.8 × 55 mm
With Stand: 6.8 kg, Without Stand: 4.7 kg
Auto Brightness Stabilization, BrightRegulator
Analog: VESA DPMS, Digital: DVI DMPM
Fine Contrast (Text, sRGB, Custom), Auto Fine Contrast ³
–
–
Clock, Phase, Position, Range Adjustment (Auto)
Brightness, Temperature (5,000 K, 6,500 K, 9,300 K, off), Gain, Reset
–
–
Volume
Signal Switching, Product Information (product name, serial number, operating time), OSD Menu Position, BrightRegulator, Power Indicator, Adjustment Lock, Languages (English, German, French, Italian, Japanese, Simplified Chinese, Spanish, Swedish, Traditional Chinese), Off Timer, Reset
Dual 0.3 W built-in speakers, input / headphone jacks
TCO'03, TÜV/Ergonomics (including ISO 13406-2), TÜV/GS, C-Tick, CE, CB, UL (cTÜVus), CSA (cTÜVus), FCC-B, Canadian ICES-003-B, TÜV/S, VCCI-B, EPA ENERGY STAR®, RoHS, WEEE, EIZO Eco Products 2006
Five Years



FlexScan L788-i

FlexScan S1932

Panel	Size and Type		48 cm (19") TFT color LCD panel	48 cm (19") TFT color LCD panel
	Viewing Angles (H, V)		178°, 178° (at contrast ratio of 10:1)	178°, 178° (at contrast ratio of 10:1)
	Brightness / Contrast		250 cd/m ² / 1000:1	250 cd/m ² / 1000:1 (Dynamic Contrast 2500:1)
	Response Time		On/Off: 20 ms (typical), Midtone ¹ : –	On/Off: 20 ms (typical), Midtone ¹ : 8 ms (typical)
	Native Resolution		1280 × 1024	1280 × 1024
	Active Display Size (H × V)		376 × 301 mm	376.3 × 301 mm
	Viewable Image Size		Diagonal: 481 mm	Diagonal: 481 mm
	Pixel Pitch		0.294 × 0.294 mm	0.294 × 0.294 mm
Display Colors		16.77 million from a palette of 1.06 billion	16.77 million from a palette of 1.06 billion	
Available Cabinet Colors			Gray, Black	Gray, Black
Dot Clock			Analog: 135 MHz, Digital: 108 MHz	Analog: 135 MHz, Digital: 108 MHz
Scanning Frequency (H, V)	Analog	30 – 82 kHz, 49 – 86 Hz	24.8 – 80 kHz, 50 – 75 Hz	
	Digital	30 – 65 kHz, 59 – 61 Hz (VGA Text: 69 – 71 Hz)	31 – 64 kHz, 59 – 61 Hz (VGA Text: 69 – 71 Hz)	
Input Signals			Analog: RGB Analog, Digital: DVI Standard 1.0	Analog: RGB Analog, Digital: DVI Standard 1.0
Input Terminals			DVI-I 29 pin × 2 (switchable)	D-Sub mini 15 pin, DVI-D 24 pin (HDCP supported ²)
USB Ports / Standard			1 upstream, 2 downstream / USB Standard Rev. 2.0	1 upstream port / USB Standard Rev. 2.0
Plug & Play			VESA DDC 2B	VESA DDC 2B
Power	Power Requirements		AC 100 – 120 V, 200 – 240 V: 50 / 60 Hz	AC 100 – 120 V, 200 – 240 V: 50 / 60 Hz
	Power Consumption		50 W (maximum)	45 W (maximum), 24 W (typical)
	Power Save Mode		Less than 2 W	Less than 0.8 W
Physical Specifications	Height Adjustment Range		100 mm	With Height Adjustable Stand: 100 mm; With ArcSwing Stand: 104 mm; With EzUp Stand: 170 mm
	Tilt / Swivel / Pivot		30° Up, 0° Down / 35° Right, 35° Left / 90°	With Height Adjustable Stand: 30° Up, 0° Down / 35° Right, 35° Left / 90°; With ArcSwing Stand: 60° Up, 5° Down / 172° Right, 172° Left / –; With EzUp Stand: 25° Up, 0° Down / 172° Right, 172° Left / -10° – 92°
	Dimensions (W × H × D)		With Stand: 404 × 406 – 506 × 205 mm Without Stand: 404 × 333 × 60 mm	With Height Adjustable Stand: 405 × 406.5 – 506.5 × 205 mm With ArcSwing Stand: 405 × 288 – 423.5 × 200 mm With EzUp Stand: 405 × 347.7 – 507 × 246.8 – 277.6 mm Without Stand: 405 × 334 × 61.5 mm
	Net Weight		With Stand: 6.8 kg, Without Stand: 4.8 kg	With Height Adjustable Stand: 7.2 kg; With ArcSwing Stand: 7.0 kg; With EzUp Stand: 8.8 kg; Without Stand: 5.2 kg
Auto Brightness Functions			Auto Brightness Stabilization	Auto Brightness Stabilization, BrightRegulator
Auto Power Save Functions			–	Analog: VESA DPMS, Digital: DVI DMPM
Display Mode Options			sRGB, Custom	Fine Contrast (Text, Picture, Movie, CAD, sRGB, Custom, WindowMovie ³), Auto Fine Contrast ⁴
ScreenManager OSD Adjustment Functions	Screen Adjustment		Clock, Phase, Position, Resolution, Range Adjustment (Auto), Signal Filter, Screen Size (full screen, enlarge, normal), Smoothing (5 stages), Border Intensity	Clock, Phase, Position, Range Adjustment (Auto), Sharpness
	Color Adjustment		Brightness/Contrast, Temperature (in 500 K increments from 4,000 K – 10,000 K), Saturation, Hue, Gain, Reset	Brightness, Contrast, Temperature (in 500 K increments from 4,000 K – 10,000 K including 9,300 K), Gain, Reset, Saturation, Hue, Gamma
	Power Save Settings	Analog	PowerManager (VESA DPMS, EIZO MPMS)	–
		Digital	PowerManager (DVI DMPM)	–
	Audio		–	Volume (adjustable with front panel volume buttons)
Other Settings		Signal Settings, Input Priority, Product Information (product name, serial number, resolution, operating time), OSD Menu Settings, Power Indicator, Adjustment Lock, Languages (English, French, German, Italian, Japanese, Spanish, Swedish), Off Timer, Reset	Signal Settings, Signal Switching, Product Information (product name, serial number, operating time), BrightRegulator, Power Indicator, Adjustment Lock, Languages (English, German, French, Italian, Japanese, Simplified Chinese, Spanish, Swedish, Traditional Chinese), Off Timer, Reset	
Audio			–	Dual 0.5 W built-in speakers, input / headphone jacks
Certifications and Standards			TCO'03 (gray), TCO'99 (black) TÜV/Ergonomics (including ISO 13406-2), TÜV/GS, c-Tick, CE, CB, UL (cTÜVus), CSA (cTÜVus), FCC-B, Canadian ICES-003-B, TÜV/S, VCCI-B, EPA ENERGY STAR®, CCC, RoHS, WEEE, EIZO Eco Products 2004	TCO'03, TÜV/Ergonomics (including ISO 13406-2), TÜV/GS, C-Tick, CE, CB, UL (cTÜVus), CSA (cTÜVus), FCC-B, Canadian ICES-003-B, TÜV/S, VCCI-B, EPA ENERGY STAR®, RoHS, WEEE, EIZO Eco Products 2006
Warranty			Five Years	Five Years

¹ Average response time measured between each grayscale level of 31, 63, 95, 127, 159, 191, and 223. ² Display with audio/video devices is not supported. ³ WindowMovie mode is selectable only when Auto Fine Contrast is active. ⁴ Bundled ScreenManager Pro for LCD is necessary to activate Auto Fine Contrast. Support for those functions varies with the graphics board used.



FlexScan S1921

48 cm (19") TFT color LCD panel
178°, 178° (at contrast ratio of 10:1)
250 cd/m ² / 1000:1
On/Off: 20 ms (typical), Midtone ¹ : –
1280 × 1024
376 × 301 mm
Diagonal: 481 mm
0.294 × 0.294 mm
16.77 million from a palette of 1.06 billion
Gray, Black
Analog: 135 MHz, Digital: 108 MHz
24.8 – 80 kHz, 50 – 75 Hz
31 – 64 kHz, 59 – 61 Hz (VGA Text: 69 – 71 Hz)
Analog: RGB Analog, Digital: DVI Standard 1.0
D-Sub mini 15 pin, DVI-D 24 pin (switchable)
Optional 1 upstream port / USB Standard Rev. 2.0
VESA DDC 2B
AC 100 – 120 V, 200 – 240 V: 50 / 60 Hz
40 W (maximum)
Less than 1 W
With Height Adjustable Stand: 100 mm; With ArcSwing Stand: 104 mm; With EzUp Stand: 170 mm
With Height Adjustable Stand: 30° Up, 0° Down / 35° Right, 35° Left / 90°; With ArcSwing Stand: 60° Up, 5° Down / 172° Right, 172° Left / –; With EzUp Stand: 25° Up, 0° Down / 172° Right, 172° Left / 10° Right, 92° Left
With Height Adjustable Stand: 405 × 406.5 – 506.5 × 205 mm With ArcSwing Stand: 405 × 288 – 423.5 × 200 mm With EzUp Stand: 405 × 347.7 – 507 × 246.8 – 277.6 mm Without Stand: 405 × 334 × 61.5 mm
With Height Adjustable Stand: 7.2 kg; With ArcSwing Stand: 7.0 kg; With EzUp Stand: 8.8 kg; Without Stand: 5.2 kg
Auto Brightness Stabilization, BrightRegulator
Analog: VESA DPMS, Digital: DVI DMPM
Fine Contrast (Text, sRGB, Custom), Auto Fine Contrast ⁴
Clock, Phase, Position, Range Adjustment (Auto)
Brightness, Temperature (5,000 K, 6,500 K, 9,300 K, off), Gain, Reset
–
–
Volume (speaker option only)
Signal Switching, Product Information (product name, serial number, operating time), OSD Menu Position, BrightRegulator, Power Indicator, Adjustment Lock, Languages (English, German, French, Italian, Japanese, Simplified Chinese, Spanish, Swedish, Traditional Chinese), Off Timer, Reset
Dual 0.3 W built-in speakers, input / headphone jacks (speaker option only)
TCO'03, TÜV/Ergonomics (including ISO 13406-2), TÜV/GS, C-Tick, CE, CB, UL (cTÜVus), CSA (cTÜVus), FCC-B, Canadian ICES-003-B, TÜV/S, VCCI-B, EPA ENERGY STAR®, RoHS, WEEE, EIZO Eco Products 2006
Five Years



FlexScan S1911

48 cm (19") TFT color LCD panel
170°, 170° (at contrast ratio of 5:1)
300 cd/m ² / 700:1
On/Off: 6 ms (typical), Midtone ¹ : 2 ms (typical)
1280 × 1024
376 × 301 mm
Diagonal: 481 mm
0.294 × 0.294 mm
16.19 million (maximum)
Gray, Black
Analog: 135 MHz, Digital: 108 MHz
24.8 – 80 kHz, 50 – 75 Hz
31 – 64 kHz, 59 – 61 Hz (VGA Text: 69 – 71 Hz)
Analog: RGB Analog, Digital: DVI Standard 1.0
D-Sub mini 15 pin, DVI-D 24 pin (switchable)
–
VESA DDC 2B
AC 100 – 120 V, 200 – 240 V: 50 / 60 Hz
45 W (maximum)
Less than 1 W
With Height Adjustable Stand: 100 mm; With ArcSwing Stand: 104 mm; With EzUp Stand: 170 mm
With Height Adjustable Stand: 30° Up, 0° Down / 35° Right, 35° Left / 90°; With ArcSwing Stand: 60° Up, 5° Down / 172° Right, 172° Left / –; With EzUp Stand: 25° Up, 0° Down / 172° Right, 172° Left / 10° Right, 92° Left
With Height Adjustable Stand: 405 × 406.5 – 506.5 × 205 mm With ArcSwing Stand: 405 × 288 – 423.5 × 200 mm With EzUp Stand: 405 × 347.7 – 507 × 246.8 – 277.6 mm Without Stand: 405 × 334 × 61.5 mm
With Height Adjustable Stand: 7.2 kg; With ArcSwing Stand: 7.0 kg; With EzUp Stand: 8.8 kg; Without Stand: 5.2 kg
BrightRegulator
Analog: VESA DPMS, Digital: DVI DMPM
Fine Contrast (Text, sRGB, Custom)
Clock, Phase, Position, Range Adjustment (Auto)
Brightness, Temperature (5,000 K, 6,500 K, 9,300 K, off), Gain, Reset
–
–
Volume (speaker option only)
Signal Switching, Product Information (product name, serial number, operating time), OSD Menu Position, BrightRegulator, Power Indicator, Adjustment Lock, Languages (English, German, French, Italian, Japanese, Simplified Chinese, Spanish, Swedish, Traditional Chinese), Off Timer, Reset
Dual 0.3 W built-in speakers, input / headphone jacks (speaker option only)
TCO'03, TÜV/Ergonomics (including ISO 13406-2), TÜV/GS, C-Tick, CE, CB, UL (cTÜVus), CSA (cTÜVus), FCC-B, Canadian ICES-003-B, TÜV/S, VCCI-B, EPA ENERGY STAR®, RoHS, WEEE, EIZO Eco Products 2006
Five Years



FlexScan S1901

48 cm (19") TFT color LCD panel
170°, 170° (at contrast ratio of 5:1)
300 cd/m ² / 700:1
On/Off: 6 ms (typical), Midtone ¹ : –
1280 × 1024
376 × 301 mm
Diagonal: 481 mm
0.294 × 0.294 mm
16.19 million (maximum)
Gray, Black
Analog: 135 MHz, Digital: 108 MHz
24.8 – 80 kHz, 50 – 75 Hz
31 – 64 kHz, 59 – 61 Hz (VGA Text: 69 – 71 Hz)
Analog: RGB Analog, Digital: DVI Standard 1.0
D-Sub mini 15 pin, DVI-D 24 pin (switchable)
–
VESA DDC 2B
AC 100 – 120 V, 200 – 240 V: 50 / 60 Hz
45 W (maximum)
Less than 1 W
With Height Adjustable Stand: 100 mm; With ArcSwing Stand: 104 mm; With EzUp Stand: 170 mm
With Height Adjustable Stand: 30° Up, 0° Down / 35° Right, 35° Left / 90°; With ArcSwing Stand: 60° Up, 5° Down / 172° Right, 172° Left / –; With EzUp Stand: 25° Up, 0° Down / 172° Right, 172° Left / 10° Right, 92° Left
With Height Adjustable Stand: 405 × 406.5 – 506.5 × 205 mm With ArcSwing Stand: 405 × 288 – 423.5 × 200 mm With EzUp Stand: 405 × 347.7 – 507 × 246.8 – 277.6 mm Without Stand: 405 × 334 × 61.5 mm
With Height Adjustable Stand: 7.2 kg; With ArcSwing Stand: 7.0 kg; With EzUp Stand: 8.8 kg; Without Stand: 5.2 kg
BrightRegulator
Analog: VESA DPMS, Digital: DVI DMPM
Fine Contrast (Text, sRGB, Custom)
Clock, Phase, Position, Range Adjustment (Auto)
Brightness, Temperature (5,000 K, 6,500 K, 9,300 K, off), Gain, Reset
–
–
Volume (speaker option only)
Signal Switching, Product Information (product name, serial number, operating time), OSD Menu Position, BrightRegulator, Power Indicator, Adjustment Lock, Languages (English, German, French, Italian, Japanese, Simplified Chinese, Spanish, Swedish, Traditional Chinese), Off Timer, Reset
Dual 0.3 W built-in speakers, input / headphone jacks (speaker option only)
TCO'03, TÜV/Ergonomics (including ISO 13406-2), TÜV/GS, C-Tick, CE, CB, UL (cTÜVus), CSA (cTÜVus), FCC-B, Canadian ICES-003-B, TÜV/S, VCCI-B, EPA ENERGY STAR®, RoHS, WEEE, EIZO Eco Products 2006
Five Years



FlexScan S1731

FlexScan S1721

Panel	Size and Type	43 cm (17") TFT color LCD panel	43 cm (17") TFT color LCD panel
	Viewing Angles (H, V)	178°, 178° (at contrast ratio of 10:1)	178°, 178° (at contrast ratio of 10:1)
	Brightness / Contrast	280 cd/m ² / 1500:1	250 cd/m ² / 1500:1
	Response Time	On/Off: 16 ms (typical), Midtone ¹ : 8 ms (typical)	On/Off: 25 ms (typical), Midtone ¹ : –
	Native Resolution	1280 × 1024	1280 × 1024
	Active Display Size (H × V)	338 × 270 mm	338 × 270 mm
	Viewable Image Size	Diagonal: 432 mm	Diagonal: 432 mm
	Pixel Pitch	0.264 × 0.264 mm	0.264 × 0.264 mm
Display Colors	16.77 million from a palette of 1.06 billion	16.77 million from a palette of 1.06 billion	
Available Cabinet Colors		Gray, Black	Gray, Black
Dot Clock		Analog: 135 MHz, Digital: 108 MHz	Analog: 135 MHz, Digital: 108 MHz
Scanning Frequency (H, V)	Analog	24.8 – 80 kHz, 50 – 75 Hz	24.8 – 80 kHz, 50 – 75 Hz
	Digital	31 – 64 kHz, 59 – 61 Hz (VGA Text: 69 – 71 Hz)	31 – 64 kHz, 59 – 61 Hz (VGA Text: 69 – 71 Hz)
Input Signals		Analog: RGB Analog, Digital: DVI Standard 1.0	Analog: RGB Analog, Digital: DVI Standard 1.0
Input Terminals		D-Sub mini 15 pin, DVI-D 24 pin (switchable)	D-Sub mini 15 pin, DVI-D 24 pin (switchable)
USB Ports / Standard		Optional 1 upstream port / USB Standard Rev. 2.0	Optional 1 upstream port / USB Standard Rev. 2.0
Plug & Play		VESA DDC 2B	VESA DDC 2B
Power	Power Requirements	AC 100 – 120 V, 200 – 240 V: 50 / 60 Hz	AC 100 – 120 V, 200 – 240 V: 50 / 60 Hz
	Power Consumption	42 W (maximum)	38 W (maximum)
	Power Save Mode	Less than 1 W	Less than 1 W
Physical Specifications	Height Adjustment Range	With Height Adjustable Stand: 100 mm; With ArcSwing Stand: 104 mm; With EzUp Stand: 170 mm	With Height Adjustable Stand: 100 mm; With ArcSwing Stand: 104 mm; With EzUp Stand: 170 mm
	Tilt / Swivel / Pivot	With Height Adjustable Stand: 30° Up, 0° Down / 35° Right, 35° Left / 90°; With ArcSwing Stand: 60° Up, 5° Down / 172° Right, 172° Left / –; With EzUp Stand: 25° Up, 0° Down / 172° Right, 172° Left / 10° Right, 92° Left	With Height Adjustable Stand: 30° Up, 0° Down / 35° Right, 35° Left / 90°; With ArcSwing Stand: 60° Up, 5° Down / 172° Right, 172° Left / –; With EzUp Stand: 25° Up, 0° Down / 172° Right, 172° Left / 10° Right, 92° Left
	Dimensions (W × H × D)	With Height Adjustable Stand: 363 × 389.5 – 489.5 × 205 mm With ArcSwing Stand: 363 × 280 – 406.5 × 200 mm With EzUp Stand: 363 × 320 – 490 × 246.8 – 274.8 mm Without Stand: 363 × 300 × 59 mm	With Height Adjustable Stand: 363 × 389.5 – 489.5 × 205 mm With ArcSwing Stand: 363 × 280 – 406.5 × 200 mm With EzUp Stand: 363 × 320 – 490 × 246.8 – 274.8 mm Without Stand: 363 × 300 × 59 mm
	Net Weight	With Height Adjustable Stand: 5.9 kg; With ArcSwing Stand: 5.7 kg; With EzUp Stand: 7.5 kg; Without Stand: 3.9 kg	With Height Adjustable Stand: 5.9 kg; With ArcSwing Stand: 5.7 kg; With EzUp Stand: 7.5 kg; Without Stand: 3.9 kg
Auto Brightness Functions		Auto Brightness Stabilization, BrightRegulator	Auto Brightness Stabilization, BrightRegulator
Auto Power Save Functions		Analog: VESA DPMS, Digital: DVI DMPM	Analog: VESA DPMS, Digital: DVI DMPM
Display Mode Options		Fine Contrast (Text, sRGB, Custom), Auto Fine Contrast ²	Fine Contrast (Text, sRGB, Custom), Auto Fine Contrast ²
ScreenManager OSD Adjustment Functions	Screen Adjustment	Clock, Phase, Position, Range Adjustment (Auto)	Clock, Phase, Position, Range Adjustment (Auto)
	Color Adjustment	Brightness, Temperature (5,000 K, 6,500 K, 9,300 K, off), Gain, Reset	Brightness, Temperature (5,000 K, 6,500 K, 9,300 K, off), Gain, Reset
	Audio	Volume (speaker option only)	Volume (speaker option only)
	Other Settings	Signal Switching, Product Information (product name, serial number, operating time), OSD Menu Position, BrightRegulator, Power Indicator, Adjustment Lock, Languages (English, German, French, Italian, Japanese, Simplified Chinese, Spanish, Swedish, Traditional Chinese), Off Timer, Reset	Signal Switching, Product Information (product name, serial number, operating time), OSD Menu Position, BrightRegulator, Power Indicator, Adjustment Lock, Languages (English, German, French, Italian, Japanese, Simplified Chinese, Spanish, Swedish, Traditional Chinese), Off Timer, Reset
Audio		Dual 0.3 W built-in speakers, input / headphone jacks (speaker option only)	Dual 0.3 W built-in speakers, input / headphone jacks (speaker option only)
Certifications and Standards		TCO'03, TÜV/Ergonomics (including ISO 13406-2), TÜV/GS, C-Tick, CE, CB, UL (cTÜVus), CSA (cTÜVus), FCC-B, Canadian ICES-003-B, TÜV/S, VCCI-B, EPA ENERGY STAR®, RoHS, WEEE, EIZO Eco Products 2006	TCO'03, TÜV/Ergonomics (including ISO 13406-2), TÜV/GS, C-Tick, CE, CB, UL (cTÜVus), CSA (cTÜVus), FCC-B, Canadian ICES-003-B, TÜV/S, VCCI-B, EPA ENERGY STAR®, RoHS, WEEE, EIZO Eco Products 2006
Warranty		Five Years	Five Years

¹ Average response time measured between each grayscale level of 31, 63, 95, 127, 159, 191, and 223. ² Bundled ScreenManager Pro for LCD is necessary to activate Auto Fine Contrast. Support for those functions varies with the graphics board used.



FlexScan S1701

43 cm (17") TFT color LCD panel
178°, 178° (at contrast ratio of 5:1)
300 cd/m ² / 1000:1
On/Off: 5 ms (typical), Midtone ¹ : –
1280 × 1024
338 × 270 mm
Diagonal: 432 mm
0.264 × 0.264 mm
16.77 million from a palette of 1.06 billion
Gray, Black
Analog: 135 MHz, Digital: 108 MHz
24.8 – 80 kHz, 50 – 75 Hz
31 – 64 kHz, 59 – 61 Hz (VGA Text: 69 – 71 Hz)
Analog: RGB Analog, Digital: DVI Standard 1.0
D-Sub mini 15 pin, DVI-D 24 pin (switchable)
–
VESA DDC 2B
AC 100 – 120 V, 200 – 240 V: 50 / 60 Hz
38 W (maximum)
Less than 1 W
With Height Adjustable Stand: 100 mm; With ArcSwing Stand: 104 mm; With EzUp Stand: 170 mm
With Height Adjustable Stand: 30° Up, 0° Down / 35° Right, 35° Left / 90°; With ArcSwing Stand: 60° Up, 5° Down / 172° Right, 172° Left / –; With EzUp Stand: 25° Up, 0° Down / 172° Right, 172° Left / 10° Right, 92° Left
With Height Adjustable Stand: 363 × 389.5 – 489.5 × 205 mm With ArcSwing Stand: 363 × 280 – 406.5 × 200 mm With EzUp Stand: 363 × 320 – 490 × 246.8 – 274.8 mm Without Stand: 363 × 300 × 59 mm
With Height Adjustable Stand: 5.9 kg; With ArcSwing Stand: 5.7 kg; With EzUp Stand: 7.5 kg; Without Stand: 3.9 kg
BrightRegulator
Analog: VESA DPMS, Digital: DVI DMPM
Fine Contrast (Text, sRGB, Custom)
Clock, Phase, Position, Range Adjustment (Auto)
Brightness, Temperature (5,000 K, 6,500 K, 9,300 K, off), Gain, Reset
Volume (speaker option only)
Signal Switching, Product Information (product name, serial number, operating time), OSD Menu Position, BrightRegulator, Power Indicator, Adjustment Lock, Languages (English, German, French, Italian, Japanese, Simplified Chinese, Spanish, Swedish, Traditional Chinese), Off Timer, Reset
Dual 0.3 W built-in speakers, input / headphone jacks (speaker option only)
TCO'03, TÜV/Ergonomics (including ISO 13406-2), TÜV/GS, C-Tick, CE, CB, UL (cTÜVus), CSA (cTÜVus), FCC-B, Canadian ICES-003-B, TÜV/S, VCCI-B, EPA ENERGY STAR®, RoHS, WEEE, EIZO Eco Products 2006
Five Years



FlexScan S1501

38 cm (15") TFT color LCD panel
160°, 150° (at contrast ratio of 5:1)
250 cd/m ² / 700:1
On/Off: 8 ms (typical), Midtone ¹ : –
1024 × 768
304.1 × 228.1 mm
Diagonal: 380 mm
0.297 × 0.297 mm
16.19 million (maximum)
Gray, Black
Analog: 80 MHz, Digital: 65 MHz
24.8 – 60 kHz, 55 – 75 kHz
31 – 49 Hz, 59 – 61 Hz (VGA Text: 69 – 71 Hz)
Analog: RGB Analog, Digital: DVI Standard 1.0
D-Sub mini 15 pin, DVI-D 24 pin (switchable)
–
VESA DDC/CI, DDC 2B
AC 100 – 120 V, 200 – 240 V: 50 / 60 Hz
25 W (maximum), 13 W (typical)
Less than 1 W
–
30° Up, 0° Down / 35° Right, 35° Left / –
With Stand: 346 × 325 × 175 mm Without Stand: 346 × 280 × 69 mm
With Stand: 5.3 kg; Without Stand: 3.7 kg
BrightRegulator
Analog: VESA DPMS, Digital: DVI DMPM
Fine Contrast (Text, sRGB, Custom)
Clock, Phase, Position, Range Adjustment (Auto), Smoothing (5 stages)
Brightness, Contrast, Gamma, Temperature (14 stages: in 500 K increments from 4000 K – 10000 K including 9300 K), Gain, Reset
Volume (adjustable with front panel volume buttons)
Signal Switching, Power Indicator, Product Information (product name, serial number, operating time), OSD Menu Position, BrightRegulator, Adjustment Lock, DDC/CI Lock, Languages (English, German, French, Italian, Japanese, Simplified Chinese, Spanish, Swedish, Traditional Chinese), Off Timer, Reset
Dual 0.5 W built-in speakers, input/headphone jacks
TCO'03, TÜV/Ergonomics (including ISO 13406-2), TÜV/GS, C-Tick, CE, CB, UL (cTÜVus), CSA (cTÜVus), FCC-B, Canadian ICES-003-B, TÜV/S, VCCI-B, EPA ENERGY STAR®, RoHS, WEEE, EIZO Eco Products 2006
Five Years



FlexScan L761T-C
FlexScan L760T-C



FlexScan L560T-C

Panel	Size and Type		48 cm (19") TFT color LCD panel	43 cm (17") TFT color LCD panel
	Viewing Angles (H, V)		178°, 178° (at contrast ratio of 10:1)	178°, 178° (at contrast ratio of 10:1)
	Brightness / Contrast		180 cd/m ² / 1000:1	180 cd/m ² / 1500:1
	On/Off Response Time		20 ms (typical)	25 ms (typical)
	Native Resolution		1280 × 1024	1280 × 1024
	Active Display Size (H × V)		376 × 301 mm	338 × 270 mm
	Viewable Image Size		Diagonal: 481 mm	Diagonal: 432 mm
	Pixel Pitch		0.294 × 0.294 mm	0.264 × 0.264 mm
	Display Colors		16.77 million from a palette of 1.06 billion	16.77 million from a palette of 1.06 billion
Available Cabinet Colors			Gray, Black	Gray, Black
Dot Clock			Analog: 135 MHz, Digital: 109 MHz	Analog: 135 MHz, Digital: 109 MHz
Scanning Frequency (H, V)	Analog	30 – 81 kHz, 49.5 – 75.5 Hz	30 – 81 kHz, 49.5 – 75.5 Hz	
	Digital	30 – 65 kHz, 59 – 61 Hz (VGA Text: 70 Hz)	30 – 65 kHz, 59 – 61 Hz (VGA Text: 70 Hz)	
Input Signals			Analog: RGB Analog, Digital: DVI Standard 1.0	Analog: RGB Analog, Digital: DVI Standard 1.0
Input Terminals			D-Sub mini 15 pin, DVI-D 24 pin (switchable)	D-Sub mini 15 pin, DVI-D 24 pin (switchable)
Plug & Play			VESA DDC 2B	VESA DDC 2B
Power	Power Requirements		AC 100 – 120 V, 200 – 240 V: 50 / 60 Hz	AC 100 – 120 V, 200 – 240 V: 50 / 60 Hz
	Power Consumption		40 W (maximum)	35 W (maximum)
	Power Save Mode		–	–
Physical Specifications	Height Adjustment Range		82 mm	82 mm
	Tilt / Swivel / Pivot		40° Up, 0° Down / 35° Right, 35° Left / –	40° Up, 0° Down / 35° Right, 35° Left / –
	Dimensions (W × H × D)		With Stand: 414 × 442.5 – 524.5 × 208.5 mm Without Stand: 414 × 340 × 64 mm	With Stand: 380 × 432.5 – 514.5 × 208.5 mm Without Stand: 380 × 353 × 58 mm
	Net Weight		With Stand: 9.0 kg, Without Stand: 6.0 kg	With Stand: 8.2 kg, Without Stand: 5.2 kg
Auto Brightness Functions			Auto Brightness Stabilization	Auto Brightness Stabilization
Auto Power Save Function			–	–
Display Mode Options			sRGB, Custom	sRGB, Custom
ScreenManager OSD Adjustment Functions	Screen Adjustment		Clock, Phase, Position, Range Adjustment (Auto/RGB), Smoothing (5 stages)	Clock, Phase, Position, Range Adjustment (Auto/RGB), Smoothing (5 stages)
	Color Adjustment		Brightness, Gamma, Temperature (in 500 K increments from 4,000 K – 10,000 K), Saturation, Hue, Gain, Reset	Brightness, Gamma, Temperature (in 500 K increments from 4,000 K – 10,000 K), Saturation, Hue, Gain, Reset
	Power Save Settings	Analog	–	–
		Digital	–	–
Other Settings		Signal Settings, VGA Selection, Product Information (product name, serial number, resolution, operating time), OSD Menu Settings, Adjustment Lock, Languages (English, French, German, Italian, Japanese, Spanish, Swedish), Off Timer, Reset	Signal Settings, VGA Selection, Product Information (product name, serial number, resolution, operating time), OSD Menu Settings, Adjustment Lock, Languages (English, French, German, Italian, Japanese, Spanish, Swedish), Off Timer, Reset	
Audio			–	–
Certifications and Standards			TÜV/GM (EN60601-1), CE Medical Device Directive, CB (IEC60601-1, IEC60950), cTÜVus (UL2601-1, CSA C22.2 No. 601-1), FCC-B, Canadian ICES-003-B, VCCI-B, CCC, RoHS, WEEE, EIZO Eco Products 2002 (L760T-C)	TÜV/GM (EN60601-1), CE Medical Device Directive, CB (IEC60601-1, IEC60950), cTÜVus (UL2601-1, CSA C22.2 No. 601-1), FCC-B, Canadian ICES-003-B, VCCI-B, CCC, RoHS, WEEE, EIZO Eco Products 2002
Warranty			Three Years	Three Years
Touch Panel	Touch Panel Type		Analog Capacitive (finger touch)	Analog Capacitive (finger touch)
	Optical Clarity		91.5%	91.5%
	Touch Life		225 million touches (minimum)	225 million touches (minimum)
	Compatible OS		Windows 2000 / XP	Windows 2000 / XP
	Communications Protocol		RS-232C: L760T-C USB: L761T-C	USB



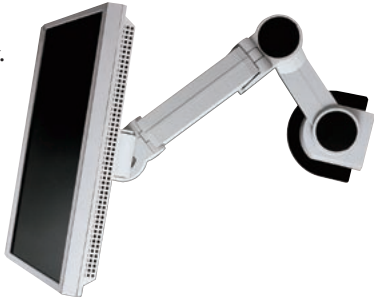
FlexScan L363T-C
FlexScan L362T

FlexScan T1502
FlexScan T1501

38 cm (15") TFT color LCD panel	38 cm (15") TFT color LCD panel
170°, 170° (at contrast ratio of 10:1)	160°, 150° (at contrast ratio of 5:1)
195 cd/m ² / L363T-C: 450:1, L362T: 400:1	195 cd/m ² / 700:1
55 ms (typical)	8 ms (typical)
1024 × 768	1024 × 768
304 × 228 mm	304 × 228 mm
Diagonal: 380 mm	Diagonal: 380 mm
0.297 × 0.297 mm	0.297 × 0.297 mm
16.77 million from a palette of 1.06 billion	16.19 million (maximum)
Gray, Black	Gray, Black
Analog: 79 MHz, Digital: 66 MHz	Analog: 80 MHz, Digital: 65 MHz
24 – 61 kHz, 55 – 76 Hz	24.8 – 60 kHz, 55 – 75 kHz
31 – 49 kHz, 59 – 61 Hz (VGA Text: 70 Hz)	31 – 49 Hz, 59 – 61 Hz (VGA Text: 69 – 71 Hz)
Analog: RGB Analog, Digital: DVI Standard 1.0	Analog: RGB Analog, Digital: DVI Standard 1.0
D-Sub mini 15 pin, DVI-D 24 pin (switchable)	D-Sub mini 15 pin, DVI-D 24 pin (switchable)
VESA DDC 2B	VESA DDC 2B
AC 100 – 120 V, 200 – 240 V: 50 / 60 Hz	AC 100 – 120 V, 200 – 240 V: 50 / 60 Hz
40 W (maximum)	25 W (maximum)
L363T-C: Less than 2 W, L362T: Less than 3 W	Less than 1 W
–	–
30° Up, 3° Down / – / –	30° Up, 0° Down / 35° Right, 35° Left / –
With Stand: 346 × 369 × 157 mm Without Stand: 346 × 301 × 54.5 mm	With Stand: 346 × 379.5 × 175 mm Without Stand: 346 × 280 × 69 mm
With Stand: 5.0 kg, Without Stand: 4.1 kg	With Stand: 6.1 kg, Without Stand: 4.1 kg
Auto Brightness Stabilization	BrightRegulator
–	Analog: VESA DPMS, Digital: DVI DMPM
sRGB, Custom	Text, sRGB, Custom
Clock, Phase, Position, Range Adjustment (Auto/RGB), Smoothing (5 stages)	Clock, Phase, Position, Range Adjustment (Auto/RGB), Smoothing (5 stages)
Brightness, Gamma, Temperature (in 500 K increments from 4,000 K – 10,000 K), Saturation, Hue, Gain, Reset	Brightness, Contrast, Gamma, Temperature (14 stages: in 500 K increments from 4,000 K – 10,000 K including 9,300 K), Saturation, Gain, Reset
VESA DPMS	–
DVI DMPM	–
Signal Settings, VGA Selection, Signal Switching, Product Information (product name, serial number, operating time), OSD Menu Settings, Adjustment Lock, Languages (English, French, German, Italian, Japanese, Spanish, Swedish), Off Timer, Reset	Signal Switching, Power Indicator, Product Information (product name, serial number, operating time), OSD Menu Position, BrightRegulator, Adjustment Lock, Languages (English, German, French, Italian, Japanese, Simplified Chinese, Spanish, Swedish, Traditional Chinese), Off Timer, Reset
Dual 1 W built-in speakers, input/headphone jacks	Dual 0.5 W built-in speakers, input/headphone jacks
TÜV/GM (EN60601-1), c-Tick, CE Medical Device Directive, CB (IEC60601-1), cTUVus (UL2601-1, CSA C22.2 No. 601-1), FCC-B, Canadian ICES-003-B, VCCI-B, CCC, RoHS, WEEE, EIZO Eco Products 2004 (L363T-C), EIZO Eco Products 2002 (L362T)	TÜV/GS, C-Tick, CE, CB, UL (cTUVus), CSA (cTUVus), FCC-B, Canadian ICES-003-B, TÜV/S, VCCI-B, RoHS, WEEE, EIZO Eco Products 2006
Three Years	Three Years
Analog Capacitive (finger touch)	Analog resistive
91.5%	80%
225 million touches (minimum)	10 million touches (minimum)
Windows 2000 / XP	Windows 2000 / XP
RS-232C: L362T USB: L363T-C	RS-232C: T1501 USB: T1502

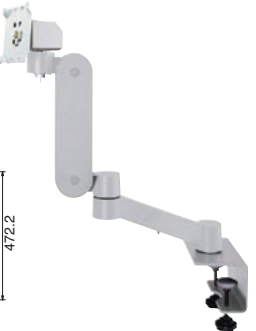
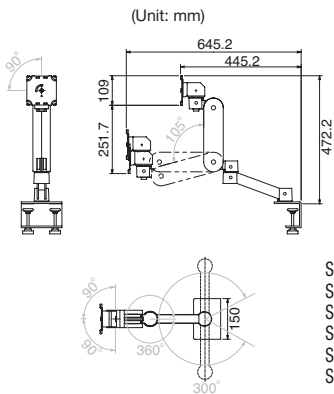
Flexible Arms

Adjust tilt, swivel, and height for best visibility when you're seated or standing, and when you won't be using the monitor for a while move it completely out of the way. The LA-131-D and LA-130-D feature three axes of movement and the LA-120-D two axes. Available in gray or black.



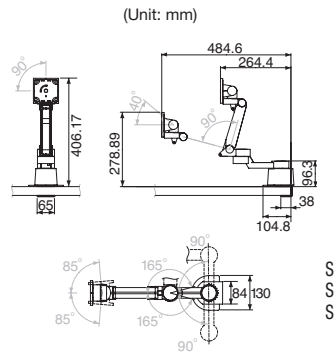
Move your monitor across the desktop to show those seated around you

LA-131-D



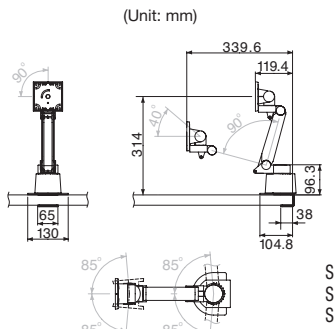
Supported Models: SX2761W, SX2461W, HD2441W, S2431W, S2401W, S2231W, S2031W, S2201W, S2001W, L997, S2100, S2000, L797-U, S1961, L788-i, S1932, S1921, S1911, S1901

LA-130-D



Supported Models: S1961, L788-i, S1932, S1921, S1911, S1901, S1731, S1721, S1701, S1501

LA-120-D

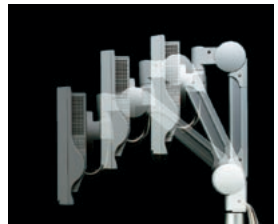


Supported Models: S1961, L788-i, S1932, S1921, S1911, S1901, S1731, S1721, S1701, S1501

Flexible Arms

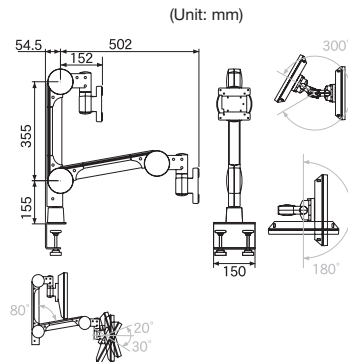
Internal cable housing and tilt, swivel, and height adjustment capabilities provide wide-ranging placement flexibility while contributing to a clutter-free desktop. The LA-121-DD includes a built-in DVI-D (digital) cable, and the LA-121-DA has a D-Sub (analog) cable.

Available in gray or black.



Wide movement range for optimal positioning

LA-121-DD LA-121-DA



LA-121-DD Supported Models: S1961, L788-i, S1731, S1721, S1701, S1501

LA-121-DA Supported Models: S1961, L788-i, S1731, S1721, S1701, S1501

Wall Mount Arms

Mount your monitor on a wall and adjust the screen's position as necessary. The LA-030-W includes three axes of movement allowing it to be extended more

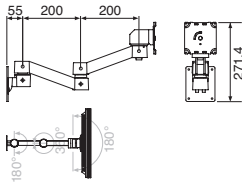


than 500 mm away from or placed against the wall when not in use. The LA-010-W and LA-011-W are available in black and the LA-030-W in gray or black.



LA-030-W

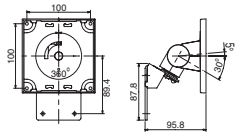
(Unit: mm)



Supported Models: SX2761W, SX2461W, HD2441W, S2431W, S2401W, S2231W, S2031W, S2201W, S2001W, L997, S2100, S2000, L797-U, S1961, L788-i, S1932, S1921, S1911, S1901

LA-012-W

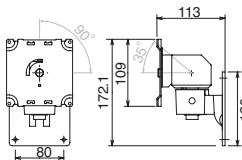
(Unit: mm)



Supported Models: S1961, L788-i, S1932, S1921, S1911, S1901, S1731, S1721, S1701, S1501

LA-011-W

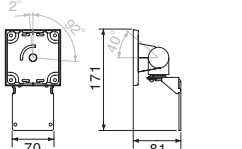
(Unit: mm)



Supported Models: SX2761W, SX2461W, HD2441W, S2431W, S2401W, S2231W, S2031W, S2201W, S2001W, L997, S2100, S2000, L797-U, S1961, L788-i, S1932, S1921, S1911, S1901

LA-010-W

(Unit: mm)



Supported Models: S1961, L788-i, S1932, S1921, S1911, S1901, S1731, S1721, S1701, S1501

Dual Height Adjustable Stands

Mount two panels in either portrait or landscape orientation. Height is adjustable in six stages and cable housing in the back of the stand contributes to a clutter-free desktop. Available in gray or black.

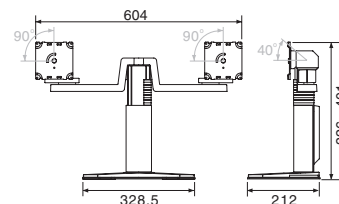


Height adjustable in 6 stages



LS-HM1-D

(Unit: mm)

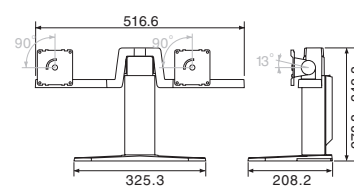


Supported Models: L997, S2100, S2000, L797-U, S1961, L788-i, S1932, S1921, S1911, S1901, S1731, S1721, S1701, S1501



LS-HM0-D

(Unit: mm)



Supported Models: S1961, S1731, S1721, S1701, S1501

Height Adjustable Stands



These stands feature 100 mm adjustment along with 41° tilt and 70° swivel. Most models also pivot 90° viewing in portrait mode. A cable holder in the back prevents desktop clutter. Available in gray or black.

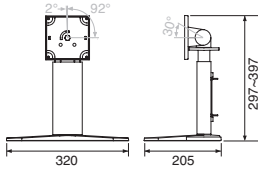


100 mm free height adjustment



LS-H71-D

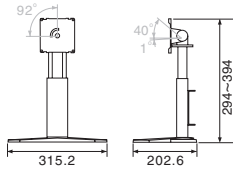
(Unit: mm)



Supported Models: L788-i, S1932, S1921, S1911, S1901

LS-H63-D

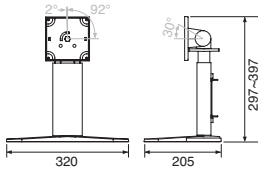
(Unit: mm)



Supported Models: L797-U

LS-H52-D

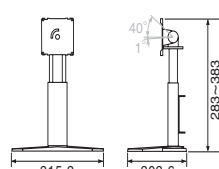
(Unit: mm)



Supported Models: S1731, S1721, S1701, S1501

LS-H32-D

(Unit: mm)



Supported Model: S1501

ArcSwing Stands



These stands provide extremely flexible positioning, with 65° tilt, 344° swivel and 104 mm height adjustment. You

can also easily change the screen angle, even lowering it to a position akin to reading a book. Available in gray or black.

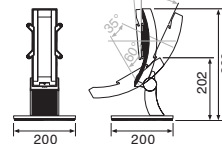


104 mm height adjustment, 65° tilt



LS-A70-D

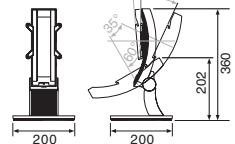
(Unit: mm)



Supported Models: L788-i, S1932, S1921, S1911, S1901

LS-A50-D

(Unit: mm)

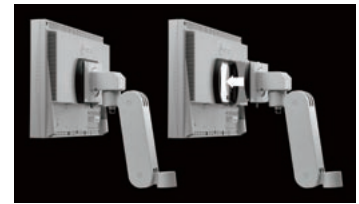


Supported Models: S1731, S1721, S1701

Quick Mount Attachment



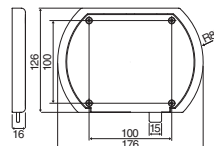
The QM1 allows you to attach and remove the monitor from a stand, arm, or any other mounting device simply by pulling a lever. Ideal for trading rooms or other environments where monitor portability is required, this convenient and time-saving accessory allows you to avoid using tools and screws every time the monitor must be removed from its mounting apparatus.



Mount the monitor with a pull of a lever

QM1

(Unit: mm)



Supported Models: S2431W, S2401W, S2231W, S2031W, S2201W, S2001W, S1961, L788-i, S1932, S1921, S1911, S1901

LCD Panel Protectors

Available for all FlexScan models (except touch panel monitors), these protectors are easy to place over the screen surface, allow a minimum of 87% light transmission, and prevent dust and scratches. Most include both an anti-glare coating side to reduce light reflection and a glossy side for crisper, more vibrant images. (FP-901 is available with non-glare sides only.)



Models	Supported Models
FP-2701W	SX2761W
FP-2400W	SX2461W, HD2441W, S2431W, S2401W
FP-2202W	S2231W, S2201W
FP-2201W	S2201W
FP-2101	S2100
FP-2000W	S2031W, S2001W
FP-2000	S2000
FP-901	L997
FP-702	L797-U, L788-i, S1932, S1921, S1911, S1901
FP-505	S1731, S1721, S1701
FP-1501	S1501

Touch Panel Pointer



Dedicated touch pen for applications where gloves are required.

TP1

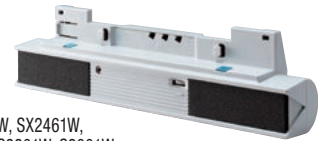
Supported Models: L761T-C, L760T-C, L560T-C, L363T-C, L362T, T1502, T1501

Sound Unit

Especially useful in multimedia applications, this independent sound unit attaches easily to the monitor bezel and is powered directly from the monitor. It features dual speakers with full-range bass reflex, ample 0.9 watts per channel output and an external headphone jack. Available in gray or black.












i-Sound™ L3



Supported Models: SX3031W, SX2761W, SX2461W, S2431W, S2401W, S2231W, S2031W, S2201W, S2001W, L997, S2100, S2000, S1961, L788-i, S1932

ACCESSORIES REFERENCE

		Model Names																																							
		Model Names	SX3031W	SX2761W	SX2461W	HD2441W	S2431W	S2401W	S2231W	S2031W	S2201W	S2001W	L997	S2100	S2000	L797-U	S1961	L788-I	S1932	S1921	S1911	S1901	S1731	S1721	S1701	S1501	L761T-C	L760T-C	L560T-C	L363T-C	L362T	T1502	T1501								
Flexible Arms		LA-131-D	•	•	•	•	•	•	•	•	•	•	•	•	•	•	•	•	•	•	•	•	•																		
		LA-130-D																	•	•	•	•	•	•	•	•	•														
		LA-120-D																	•	•	•	•	•	•	•	•	•														
		LA-121-DA																	•	•					•	•	•	•													
		LA-121-DD																	•	•					•	•	•	•													
Wall Mount Arms		LA-030-W	•	•	•	•	•	•	•	•	•	•	•	•	•	•	•	•	•	•	•	•	•																		
		LA-012-W																	•	•	•	•	•	•	•	•	•														
		LA-011-W	•	•	•	•	•	•	•	•	•	•	•	•	•	•	•	•	•	•	•	•	•	•																	
		LA-010-W																	•	•	•	•	•	•	•	•	•	•													
Dual Height Adjustable Stands		LS-HM1-D												•	•	•	•	•	•	•	•	•	•	•	•	•	•	•	•	•	•	•	•	•	•	•					
		LS-HM0-D																	•						•	•	•	•													
Height Adjustable Stands		LS-H71-D																	•	•	•	•	•																		
		LS-H63-D																	•																						
		LS-H52-D																							•	•	•	•													
		LS-H32-D																										•													
ArcSwing Stands		LS-A70-D																	•	•	•	•	•																		
		LS-A50-D																							•	•	•														
Quick Mount Attachment		QM1				•	•	•	•	•	•							•	•	•	•	•	•																		
Panel Protectors		FP-2701W	•																																						
		FP-2400W		•	•	•	•																																		
		FP-2202W								•		•																													
		FP-2201W											•																												
		FP-2101																																							
		FP-2000W										•		•																											
		FP-2000																																							
		FP-901																																							
		FP-702																																							
		FP-505																																							
FP-1501																																									
Sound Unit		i•Sound L3	•	•	•		•	•	•	•	•	•	•	•	•	•	•	•	•	•	•	•																			
Touch Panel Pointer		TP1																																							

**EIZO Eco Products —
A Commitment to
Environmental Preservation
over the Product Life Cycle**



The development, implementation, and revision of the EIZO Eco Products internal environmental label stems from EIZO's longstanding commitment to manufacturing environmentally sound products as well as a desire to provide consumers with an instantly recognizable means to assess their environmental performance. Based on the 3Rs (Reduce, Reuse, Recycle) and energy savings, EIZO has introduced three versions of this label with EIZO Eco Products 2006 being the most recent.

EIZO Eco Products 2006 Requirements

- 1) Power consumption less than 1 watt when turned off.
- 2) User's manual made with chlorine-free, recycled paper.
- 3) Subject to an internal product environmental assessment.
- 4) Partial use of recycled plastic.
- 5) Power consumption less than two watts in power save mode.
- 6) Partial use of soy ink with supplied printed materials.
- 7) Use or partial use of plastic containing raw plant materials.
- 8) Use of recycled Styrofoam or paper in packaging cushioning materials.
- 9) Meets VOC (volatile organic compounds) guidelines for PCs as established by JEITA*.
- 10) Complies with the RoHS directive.

Previous versions of this label are EIZO Eco Products 2004 which covers the first six and EIZO Eco Products 2002 which covers the first three requirements.

Products meeting the above criteria are distinguished by an EIZO Eco Products label, which appears on the product brochure, web site, packaging, and user's manual. EIZO is committed to making future products that will meet the requirements of the EIZO Eco Products 2006 or EIZO Eco Products 2004 labels.

**JEITA is the Japan Electronics and Information Technology Industries Association. JEITA established guidelines to limit emission levels of VOCs from PCs. The guidelines are a countermeasure against health hazards caused by VOC contaminants released from furniture, everyday objects, and building materials that accumulate indoors. EIZO carries out evaluations based on these guidelines.*

RoHS and WEEE — Directives for More Environmentally Friendly Products

The need to reduce hazardous materials and increase recycling in electrical and electronic equipment to protect human health and the environment has prompted the European Union to issue two directives.

The first directive is the restriction of the use of certain hazardous substances in electrical and electronic equipment (RoHS). The six restricted substances are lead, mercury, cadmium, hexavalent chromium, PBDE (polybrominated diphenylethers), and PBB (polybrominated biphenyls). RoHS went into effect in July 2006 and applies to most electrical and electronic equipment manufactured and imported into the EU. Since July 2005, EIZO has been phasing in compliance with RoHS. All monitors and accessories in this brochure manufactured after June 2006 are RoHS compliant.

RoHS compliance may depend on the date of manufacture. All RoHS-compliant models are indicated as such on the product packaging. For more details please contact the official EIZO distributor in your country.

The second directive is Waste Electrical and Electronic Equipment (WEEE). This directive requires producers of such equipment to provide for free collection and achieve recovery and reuse and recycling targets of 75% and 65% respectively. WEEE went into effect in August 2005. All products in this brochure manufactured since June 2005 comply with WEEE.

**Industry-Leading
Five-Year Warranty**



EIZO stands behind the craftsmanship of its products with the industry's only manufacturer-side five-year warranty. This warranty is offered by EIZO and its authorized distributors for all monitors in this brochure 17" and over (excluding touch panel monitors).

The warranty period of the LCD panel and backlight is limited to three years and the total usage time to 30,000 hours from the date of purchase. For other FlexScan LCD monitors, EIZO and its authorized distributors offer a three-year warranty.

© 2007 Eizo Nanao Corporation.

All product names and logos are trademarks or registered trademarks of their respective companies. SlimEdge is a trademark, and ScreenManager, FlexScan, and EIZO are registered trademarks of Eizo Nanao Corporation.

Specifications are subject to change without notice.



Published on chlorine-free paper.

(040906J) Printed in Japan 12, 2007, 10K

EIZO NANAO CORPORATION

153 Shimokashiwano, Hakusan, Ishikawa 924-8566 Japan

Phone +81-76-277-6792 Fax: +81-76-277-6793

www.eizo.com

