



▸ Colors



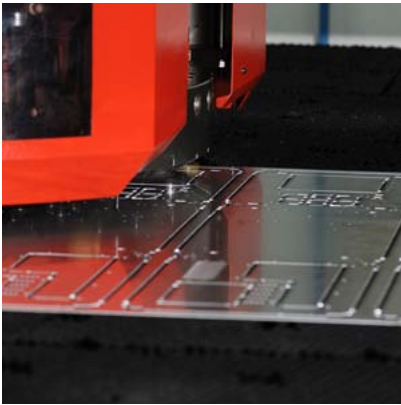
Model PC-9FB(Black)

▸ Overview





► Features



Hand Crafted
Made in Taiwan.



Hair-line
Brushed
Anodized
Aluminum
Finishing.



A
Modular
HDD
Cage



Front
120mm Blue
LED Fan x 2

Rear
120mm
Fan

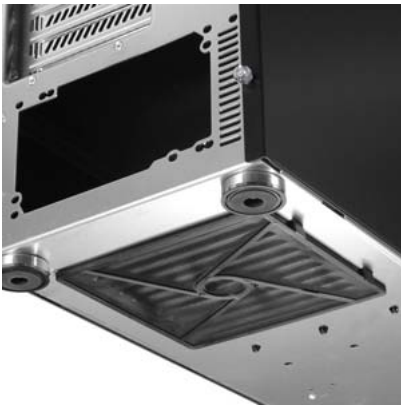
Tool-less
Optical Drive
Mounting



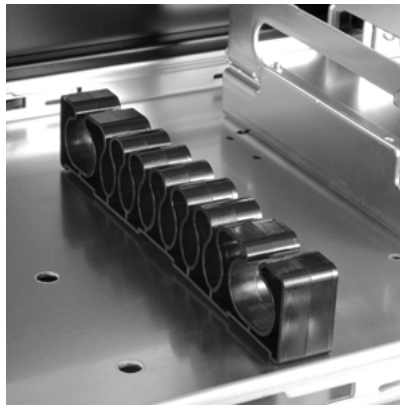
Multi-media I/O ports (USB 3.0)



Tool-less HDD cage



air filter at the base of the case



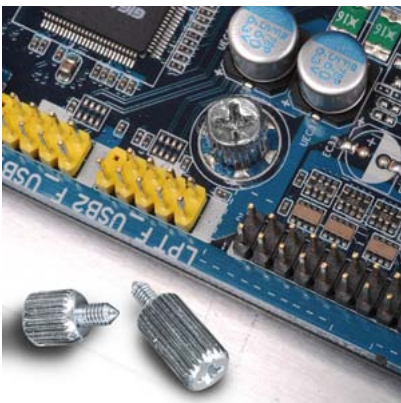
Cable management Kit



Opening For Cables



Anti-Vibration Thumb Screw for HDD



M/B Thumb Screw



Top 140mm Fan Hole



USB3.0
To
USB2.0
Cable



Maximum
Video Card
Size

Specifications

- Chassis -

Model	PC-9F
Case Type	Mid Tower
Unit Dimensions	(W) 210mm x (H) 473mm x (D) 498mm
Front bezel Material	Aluminum
Color	Black
Side Panel	Black
Body Material	Aluminum
Net Weight	6KG
5.25" drive bay (External)	3
3.5" drive bay (External)	1(use one 5.25-inch to 3.5-inch converter)
3.5" drive bay (Internal)	6
Expansion Slot	8
Motherboard	ATX / M-ATX
System Fan (Front)	120mm Fan x 2
System Fan (Top)	None
System Fan (Rear)	120mm Fan x 1
I/O Ports	USB3.0 x 2 / e-SATA x 1 / HD Audio
Maximum Video Card Size	285mm
Package Dimensions	(W) mm x (H) mm x (D) mm
Gross Weight	KG

- Package Contents -

- Mid Tower Chassis x 1
- Accessories Package x 1
- Quick Installation Guide x 1



ISO 9001
ALL PRODUCTS MADE BY
CERTIFIED FACTORY
