

Supplementary Material

Integrative taxonomy reveals that not all European reddish runcinids are the same: the case of the *Runcina ferruginea* Kress, 1977 (Gastropoda, Heterobranchia, Runcinida) species-complex, with the description of a new genus

Ana Karla Araujo^{A,*}, Marta Pola^B, Manuel Antonio E. Malaquias^C, Fabio Vitale^{D,E} and Juan Lucas Cervera^{A,F}

^ADepartamento de Biología, Facultad de Ciencias del Mar y Ambientales, Campus de Excelencia Internacional del Mar (CEIMAR), Universidad de Cádiz, Avenida República Saharaui s/n, Apartado 40, E-11510 Puerto Real (Cádiz), Spain

^BDepartamento de Biología, Facultad de Ciencias, Universidad Autónoma de Madrid (UAM), Campus de Excelencia Internacional UAM + Consejo Superior de Investigaciones Científicas (CSIC), C/ Darwin, 2, E-28049 Madrid, Spain

^CSection of Taxonomy and Evolution, Department of Natural History, University Museum of Bergen, University of Bergen, PB7800, NO-5020 Bergen, Norway

^DMuseo di Storia Naturale del Salento, I-73021 Calimera (Lecce), Italy

^EAssociazione Salento Sommerso, Via Giuseppe Doria, 31, I-73100 Salento (Lecce), Italy

^FInstituto Universitario de Investigación Marina (INMAR), CEIMAR, Universidad de Cádiz, Avenida República Saharaui s/n, Apartado 40, E-11510 Puerto Real (Cádiz), Spain

*Correspondence to: Email: anakarla.araujom@gmail.com

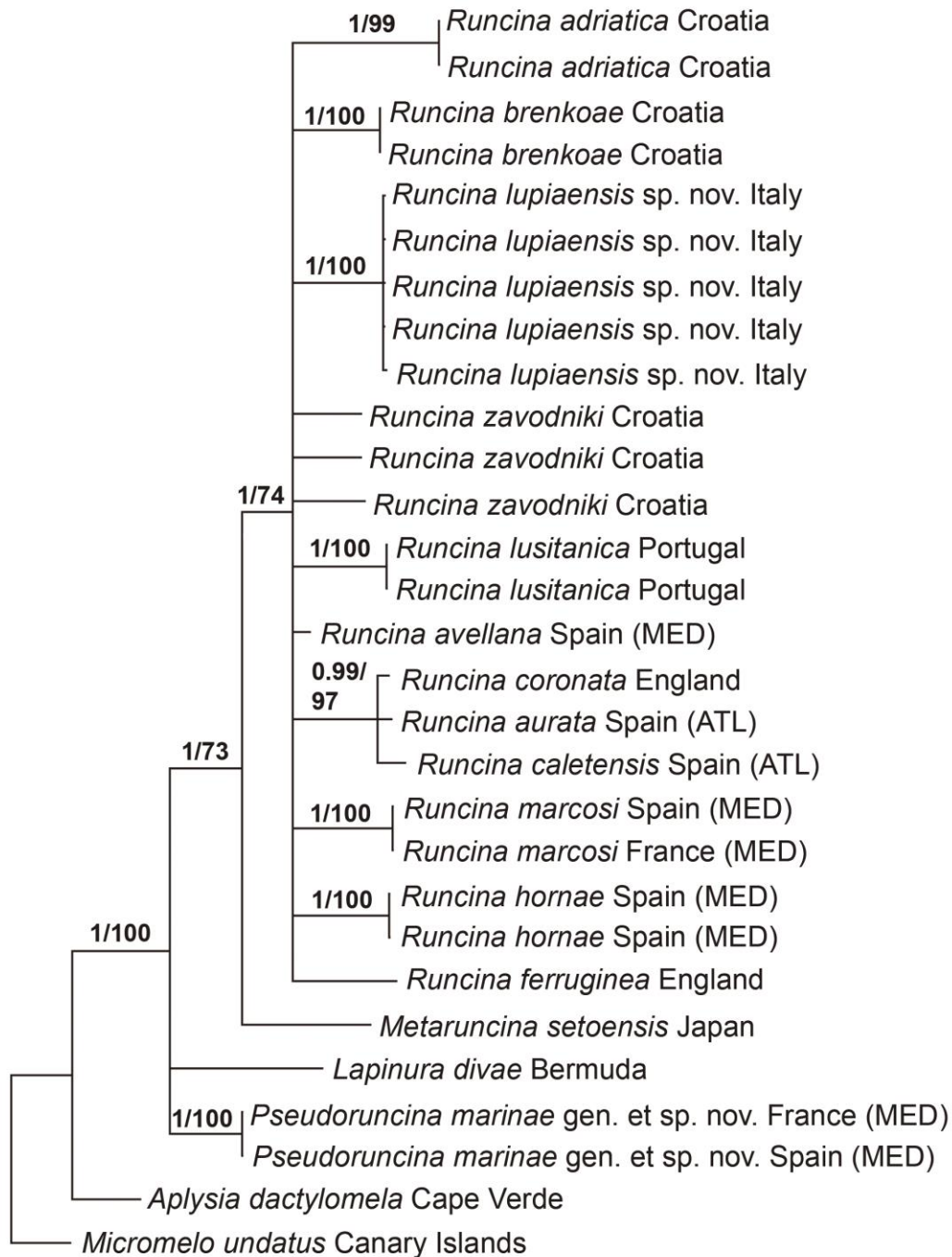


Figure S1. Phylogenetic hypothesis of “*Runcina ferruginea*” complex based on BI of the *COI* gene. Numbers on the left of the slash bar are posterior probabilities and on the right bootstrap values derived from maximum likelihood. Unsupported branches not labelled.

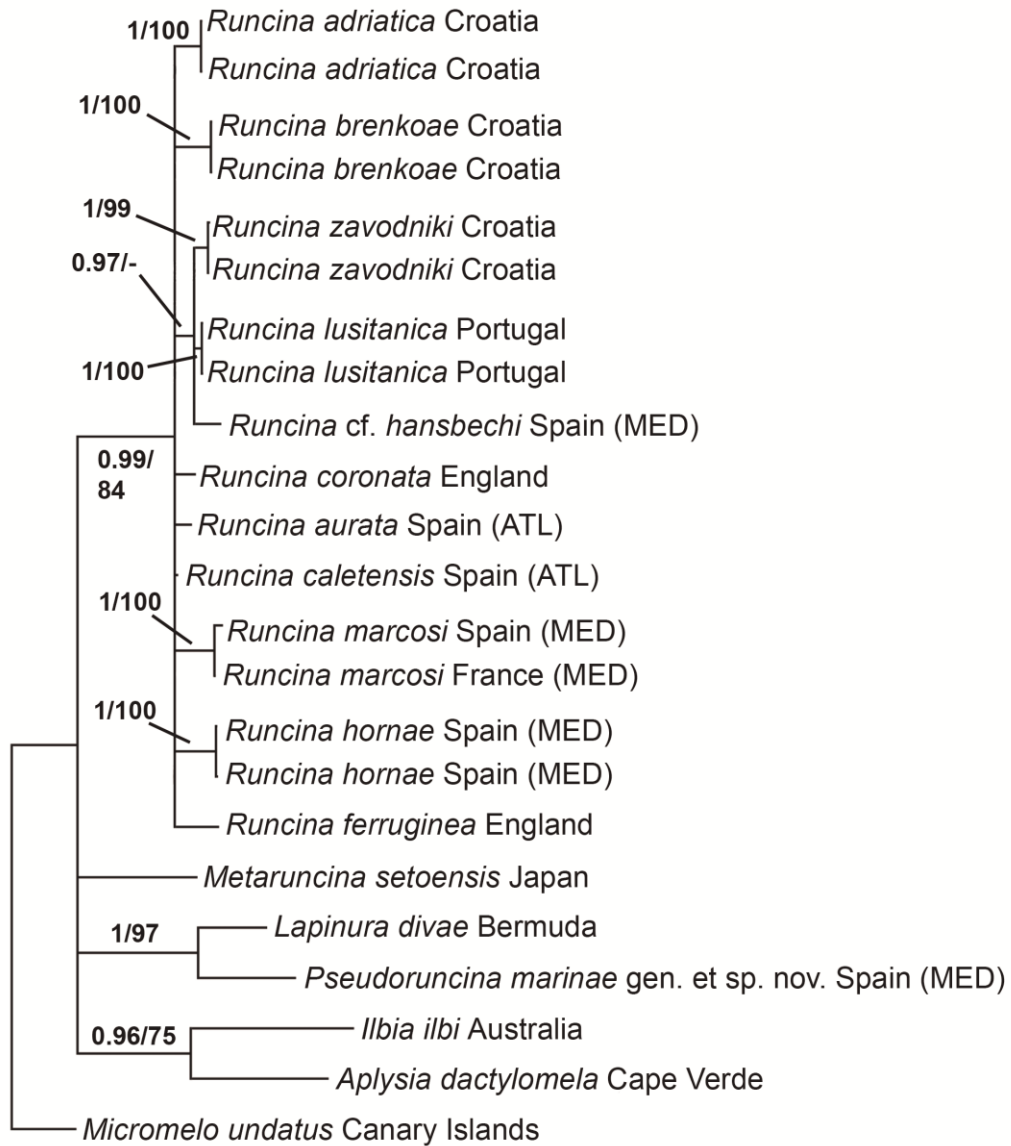


Figure S2. Phylogenetic hypothesis of “*Runcina ferruginea*” complex based on BI of the *16S* gene. Numbers on the left of the slash bar are posterior probabilities and on the right bootstrap values derived from maximum likelihood. Unsupported branches not labelled.

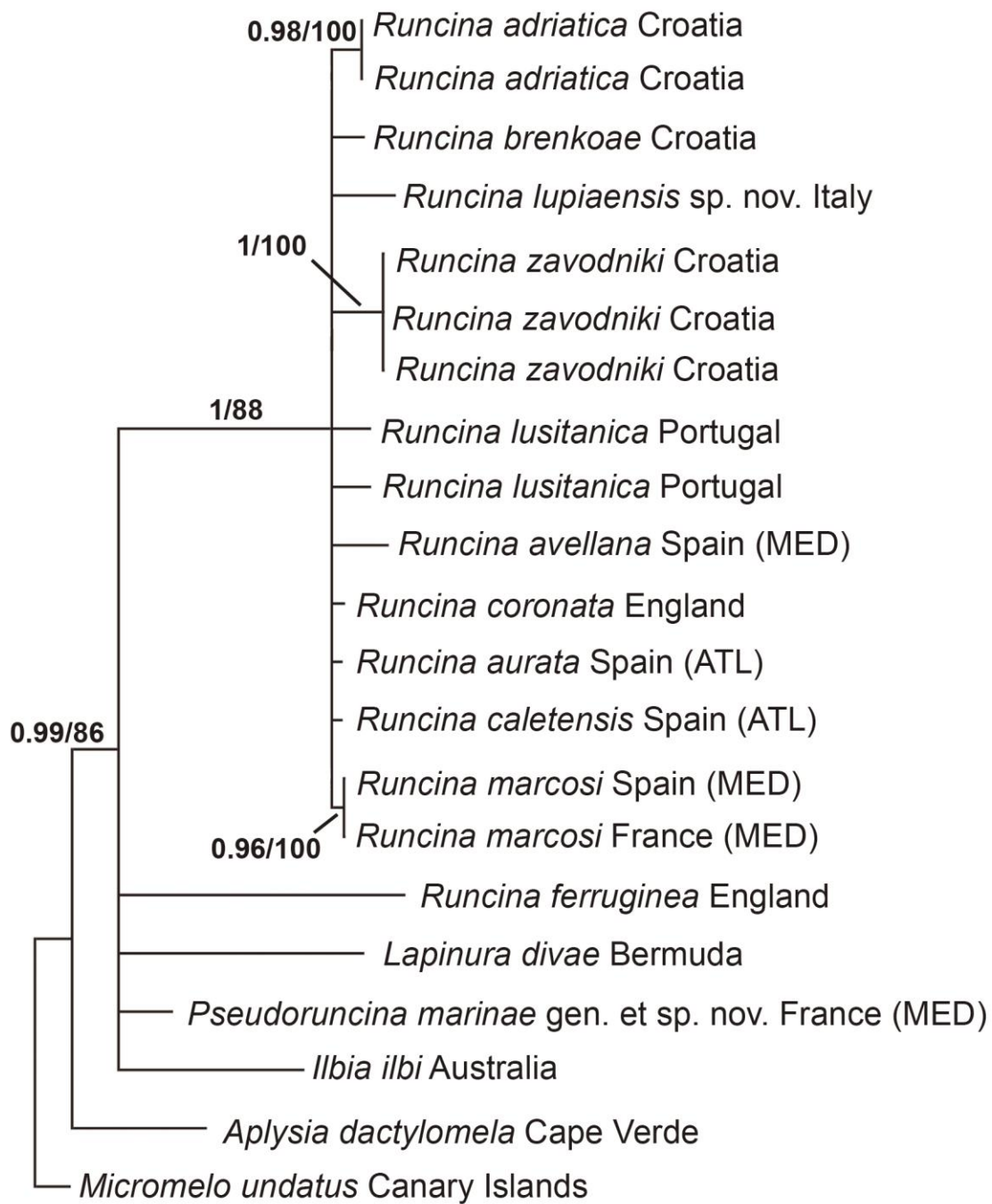


Figure S3. Phylogenetic hypothesis of “*Runcina ferruginea*” complex based on BI of the *H3* gene. Numbers on the left of the slash bar are posterior probabilities and on the right bootstrap values derived from maximum likelihood. Unsupported branches not labelled.



Figure S4. Photograph of the holotype of *Rucina lupiaensis* sp. nov. (MNCN 15.05/91512, sequenced). Specimen from S. Andrea Island, Gallipoli, Lecce (Italy) (photo Fabio Vitale).