

Supplementary material

Invasive Japanese foraminifera in a south-west Australian estuary

Clément M. Tremblin^{A,D}, *Maria Holzmann*^B, *Justin H. Parker*^C, *Aleksey Sadekov*^A
and *David W. Haig*^A

^AOcean Graduate School, The University of Western Australia, 35 Stirling Highway,
Perth, WA 6009, Australia.

^BDepartment of Genetics and Evolution, The University of Geneva, 30 Quai Ernest Ansermet,
CH-1211 Geneva, Switzerland.

^CTask Fronterra Geoscience, 24 Risely Street, Ardross, WA 6153, Australia.

^DCorresponding author. Email: 23126169@student.uwa.edu.au

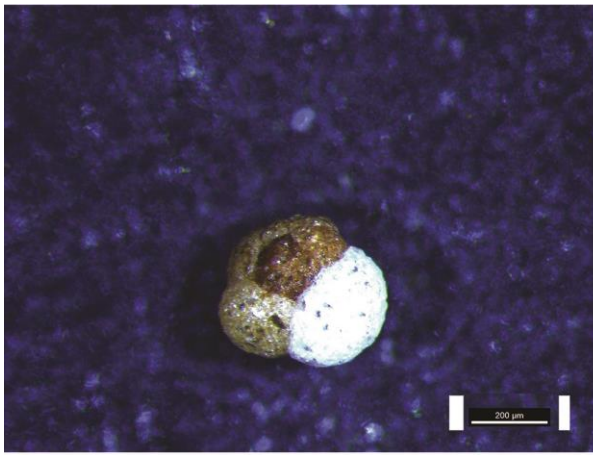
Table S1. GPS coordinates of Leschenault Inlet and Collie River mud sample collection

Location	Samples	Geographical coordinates		Water depth (m)
		Latitude (°)	Longitude (°)	
Leschenault Inlet	22/5/20-1	33°2788'S	115°705'E	4
	22/5/20-2	33°2776'S	115°7059'E	4
	22/5/20-3	33°2779'S	115°7056'E	3
	22/5/20-4	33°2781'S	115°7056'E	4
	22/5/20-5	33°2785'S	115°7054'E	4
	18/6/21-1	33°278'S	115°707'E	2
	18/6/21-2	32°278'S	115°706'E	3
	18/6/21-3	33°278'S	115°708'E	1
Collie River	4/6/20-1	33°3056'S	115°6945'E	2
	4/6/20-2	33°3079'S	115°6959'E	2
	4/6/20-3	33°3080'S	115°6939'E	1
	4/6/20-4	33°3085'S	115°69723'E	1

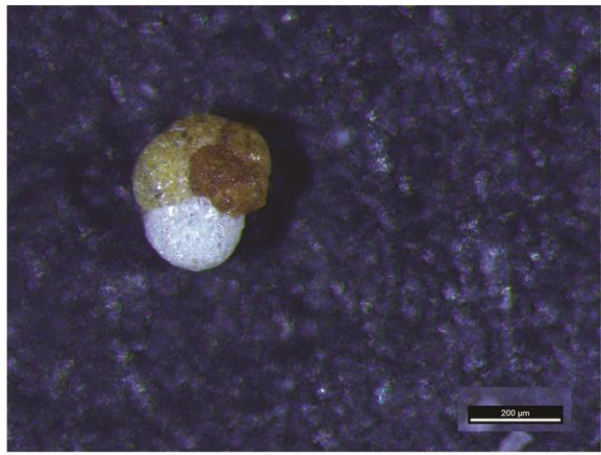
Table S2. Isolate, accession number, and sampling localities for 51 sequences of agglutinated foraminifera deposited in the EMBL/GenBank database, including the newly acquired sequences of

***Trochammina hadai* from Leschenault Inlet**

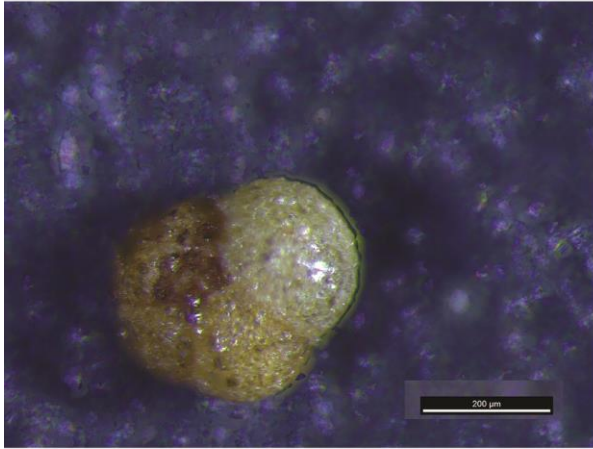
Species	Isolate	Accession number	Sampling locality
<i>Ammobaculites</i> sp.	150	AJ312435	USA, Sapelo Island
<i>Ammotium pseudocassis</i>	155	AJ312434	USA, Sapelo Island
<i>Arenoparrella mexicana</i>	229	AJ307741	USA, Sapelo Island
<i>Balticammina pseudomacrescens</i>	32	MZ479306	Russia, White Sea, Chupa Inlet
<i>Balticammina pseudomacrescens</i>	35	MZ479307	Russia, White Sea, Chupa Inlet
<i>Bigenerina</i> sp.	31	AJ504688	Puerto Rico
<i>Cribrostomoides crassimargo</i>	2720	HG425225	Norway, Svalbard
<i>Cribrostomoides</i> sp.	17496	MF770992	New Zealand, Otanerau
<i>Cyrea</i> sp.	n.a.	X86095	France, Mediterranean Sea, St. Cyr
<i>Cyrea szymborska</i>	17247	LN886773	France, Mediterranean Sea, St. Claire
<i>Eggerelloides scaber</i>	ce1	MZ475350	Denmark, Faroe Islands
<i>Eggerelloides scaber</i>	12302	FR839728	Denmark, Aarhus
<i>Entzia macrescens</i>	418	HG425225	GBR, Dovey Estuary
<i>Entzia macrescens</i>	420	AJ307742	GBR, Dovey Estuary
<i>Haplophragmoides wilberti</i>	417	AJ312436	GBR, Dovey Estuary
<i>Liebusella goesi</i>	R3	FR754403	Norway, Oslo Fjord
<i>Liebusella goesi</i>	R6	FR754401	Norway, Oslo Fjord
<i>Reophax curtus</i>	9713	MK121734	Russia, White Sea, Chupa Inlet
<i>Reophax pilulifer</i>	8206	MF770994	Antarctica
<i>Reophax scorpiurus</i>	E17	AJ514850	Norway, Svalbard
<i>Reophax spiculifer</i>	3895	MF770993	Antarctica
<i>Siphonoferooides</i> sp.	655	AJ504690	Japan
<i>Spiroplectammina</i> sp.	cs1	MZ475343	Chile, Patagonia
<i>Spiroplectammina</i> sp.	2646	AJ504689	Norway, Svalbard
<i>Srinivasania sundarbanensis</i>	EC4	MN364400	India, Sundarbans
<i>Srinivasania sundarbanensis</i>	EC5	MN364401	India, Sundarbans
<i>Srinivasania sundarbanensis</i>	EC7	MN364402	India, Sundarbans
<i>Textularia agglutinans</i>	17015	LN879399	Israel, Eilat
<i>Textularia agglutinans</i>	17016	LN879402	Israel, Eilat
<i>Textularia gramen</i>	13633	LN848740	Denmark, Faroe Islands
<i>Textularia gramen</i>	13634	MF771001	Denmark, Faroe Islands
<i>Trochammina hadai</i>	95	AJ317979	Japan, Hamana Lake
<i>Trochammina hadai</i>	96	MF771005	Japan, Hamana Lake
<i>Trochammina hadai</i>	97	MF771008	Japan, Hamana Lake
<i>Trochammina hadai</i>	Troch1B3	MZ475344	USA, San Francisco
<i>Trochammina hadai</i>	Troch1B4	MZ475345	USA, San Francisco
<i>Trochammina hadai</i>	Troch1B9	MZ475346	USA, San Francisco
<i>Trochammina hadai</i>	21189	MZ707232	West Australia, Leschenault Inlet
<i>Trochammina hadai</i>	21190	MZ707233	West Australia, Leschenault Inlet
<i>Trochammina hadai</i>	21191	MZ707234	West Australia, Leschenault Inlet
<i>Trochammina hadai</i>	21192	MZ707235	West Australia, Leschenault Inlet
<i>Trochammina hadai</i>	21193	MZ707236	West Australia, Leschenault Inlet
<i>Trochammina hadai</i>	21194	MZ707237	West Australia, Leschenault Inlet
<i>Trochammina inflata</i>	13847	MZ475341	Germany, Bottsand Lagoon
<i>Trochammina inflata</i>	16337	MZ707242	Germany, Bottsand Lagoon
<i>Trochammina inflata</i>	16343	MZ707245	Germany, Bottsand Lagoon
<i>Trochammina pacifica</i>	Troch1B1	MF771002	USA, San Francisco
<i>Trochammina pacifica</i>	Troch1B2	MF771003	USA, San Francisco
<i>Trochammina pacifica</i>	Troch3B7	MF771004	USA, San Francisco
<i>Trochammina</i> sp.	1	MZ479320	Russia, White Sea, Chupa Inlet
<i>Trochammina</i> sp.	3	MZ479321	Russia, White Sea, Chupa Inlet



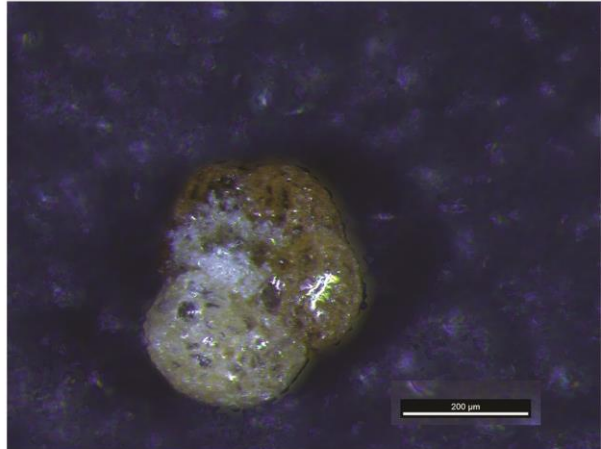
Trochammina_21189



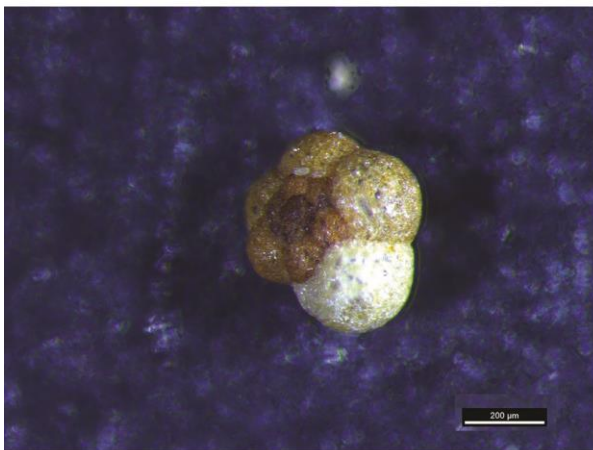
Trochammina_21190



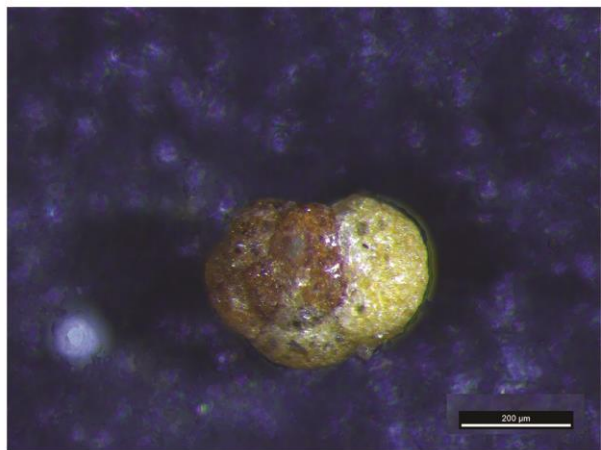
Trochammina_21191.1



Trochammina_21191



Trochammina_21192



Trochammina_21193

Fig. S1. Light-micrograph images of the spiral sides of the six *Trochammina hadai* specimens sequenced from Leschenault Inlet.