

Supplementary material

A dated molecular perspective of eucalypt taxonomy, evolution and diversification

Andrew H. Thornhill^{A,B,C,H}, *Michael D. Crisp*^D, *Carsten Külheim*^{D,E}, *Kristy E. Lam*^A,
Leigh A. Nelson^F, *David K. Yeates*^F and *Joseph T. Miller*^{A,G}

^ACentre for Australian National Biodiversity Research, National Research Collections,
Black Mountain, CSIRO, Canberra, ACT 2601, Australia

^BAustralian Tropical Herbarium, James Cook University, Cairns, Qld 4870, Australia.

^CUniversity and Jepson Herbaria, and Department of Integrative Biology, University of California,
Berkeley, CA 94720-2465, USA.

^DDivision of Evolution and Ecology, Research School of Biology, Australian National University,
Canberra, ACT 2601, Australia

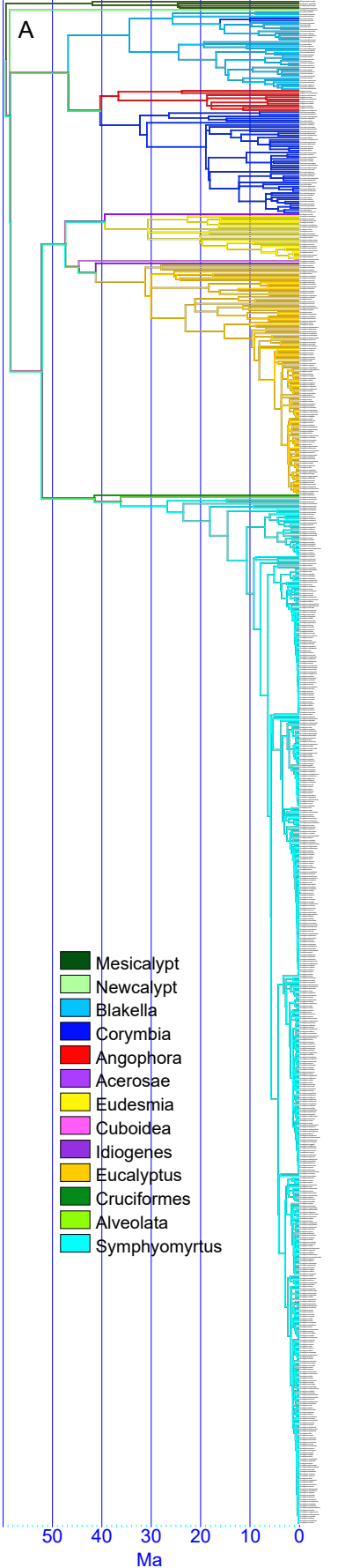
^ESchool of Forest Resources and Environmental Science, Michigan Technological University,
Houghton, MI 49931, USA

^FAustralian National Insect Collection and Taxonomic Research and Information Network,
National Research Collections, Black Mountain, CSIRO, ACT 2601, Australia

^GOffice of International Science and Engineering, National Science Foundation,
Alexandria, VA 22314, USA.

^HCorresponding author. Email: andrew.thornhill@gmail.com

Fig. S1. Dated phylogenies of (A, B) the two maximum-likelihood and (C) one Bayesian analyses mapped with the informal groups mesicalypts and newcalypt, as well as the eucalypt subgeneric classification of Nicolle (2015). (See following pages.)



B

- Mesicalypt
- Newcalypt
- Blakella
- Corymbia
- Angophora
- Acerosae
- Eudesmia
- Cuboidea
- Idiogenes
- Eucalyptus
- Cruciformes
- Alveolata
- Symphyomyrtus

50

40

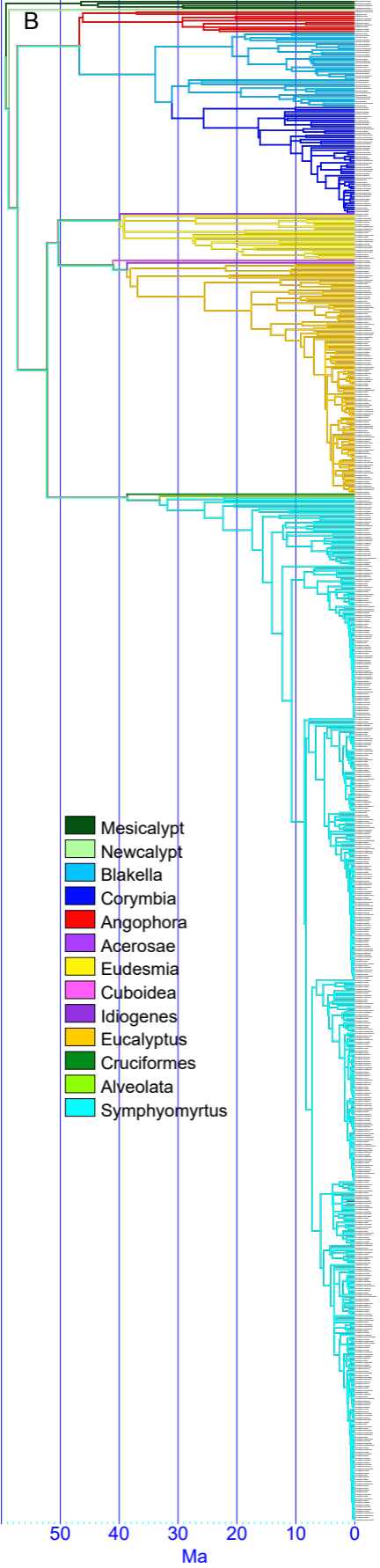
30

20

10

0

Ma



C

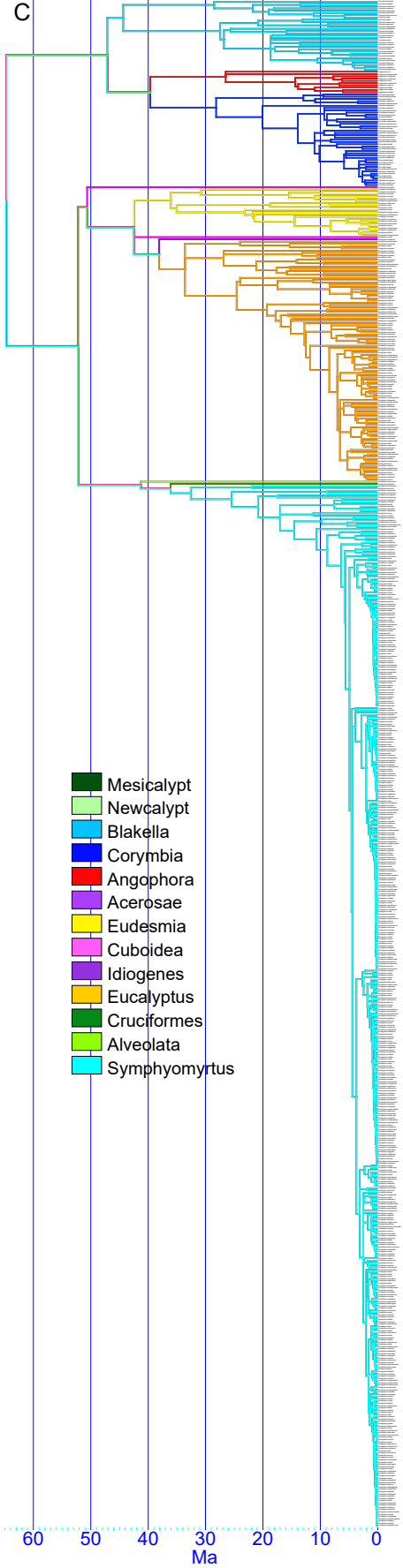
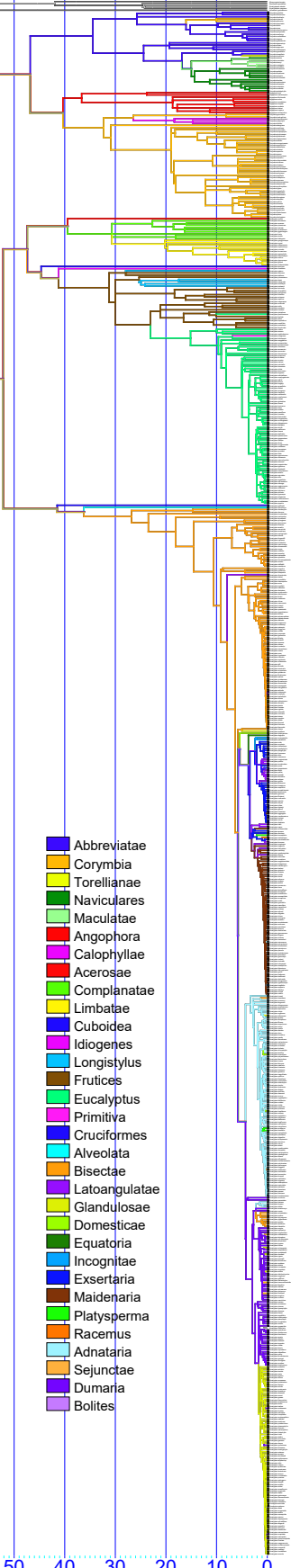


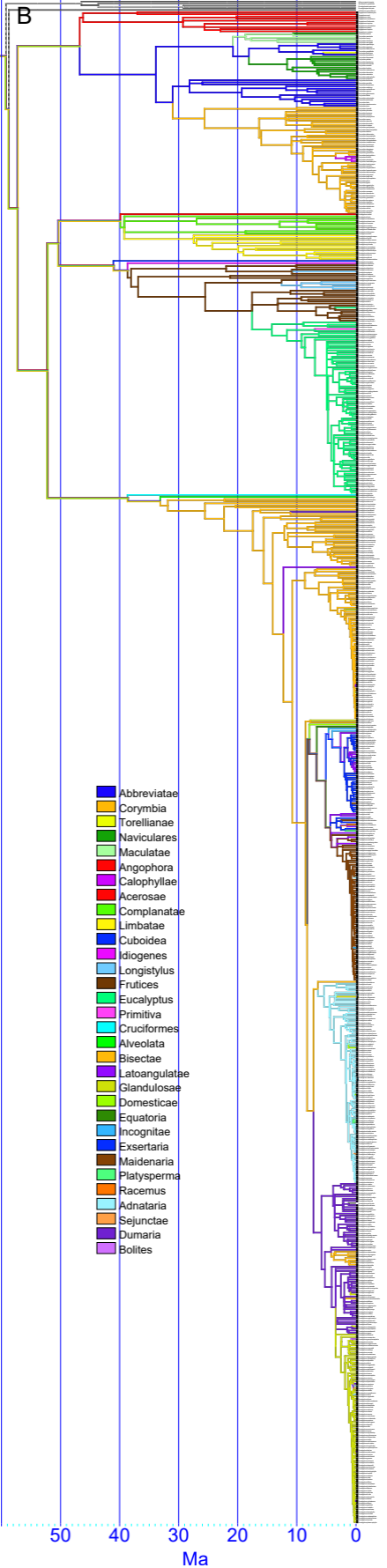
Fig. S2. Dated phylogenies of (A, B) the two maximum-likelihood and (C) one Bayesian analyses mapped with the eucalypt section classification of Nicolle (2015). (See following pages.)

A



- Abbreviatae
- Corymbia
- Torellianae
- Naviculares
- Maculatae
- Angophora
- Calophyllae
- Acerosae
- Complanatae
- Limbatae
- Cuboidea
- Idiogenes
- Longistylus
- Frutices
- Eucalyptus
- Primitiva
- Cruciformes
- Alveolata
- Bisectae
- Latoangulatae
- Glandulosae
- Domesticae
- Equatoria
- Incognitae
- Exsertaria
- Maidenaria
- Platysperma
- Racemus
- Adnataria
- Sejunctae
- Dumaria
- Bolites

50 40 30 20 10 0
Ma



C

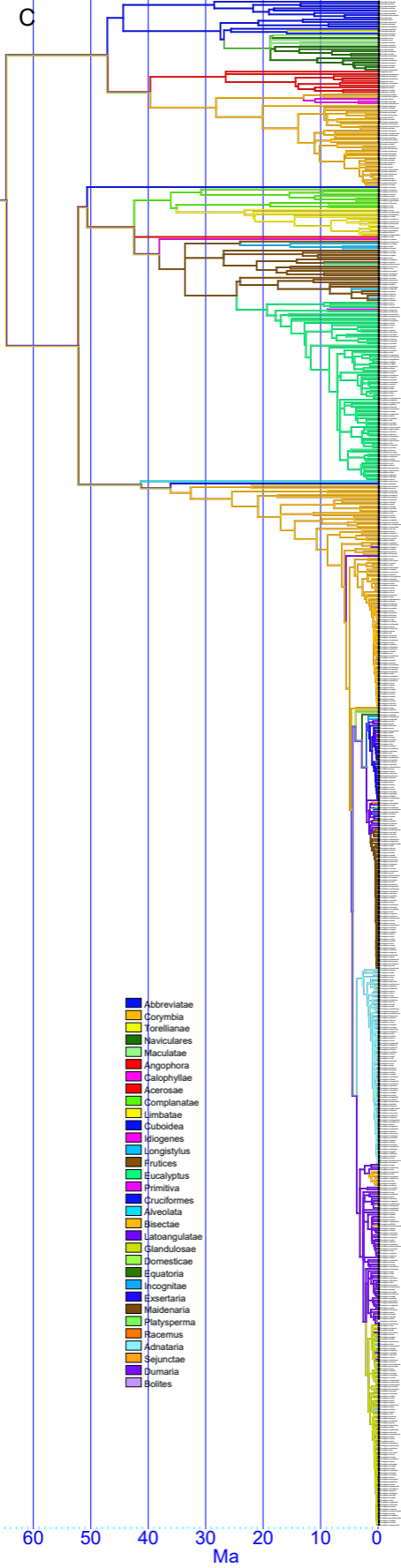
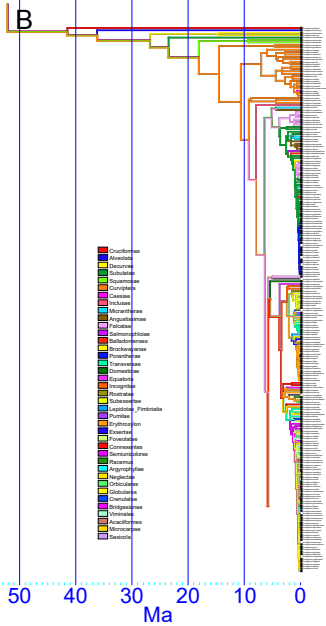


Fig. S3. (A–C) The dated phylogeny of maximum-likelihood 1 broken into three segments to show the eucalypt series classification of Nicolle (2015). (See following pages.)

A



B

C

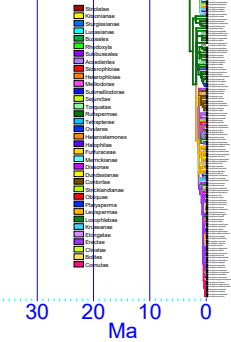
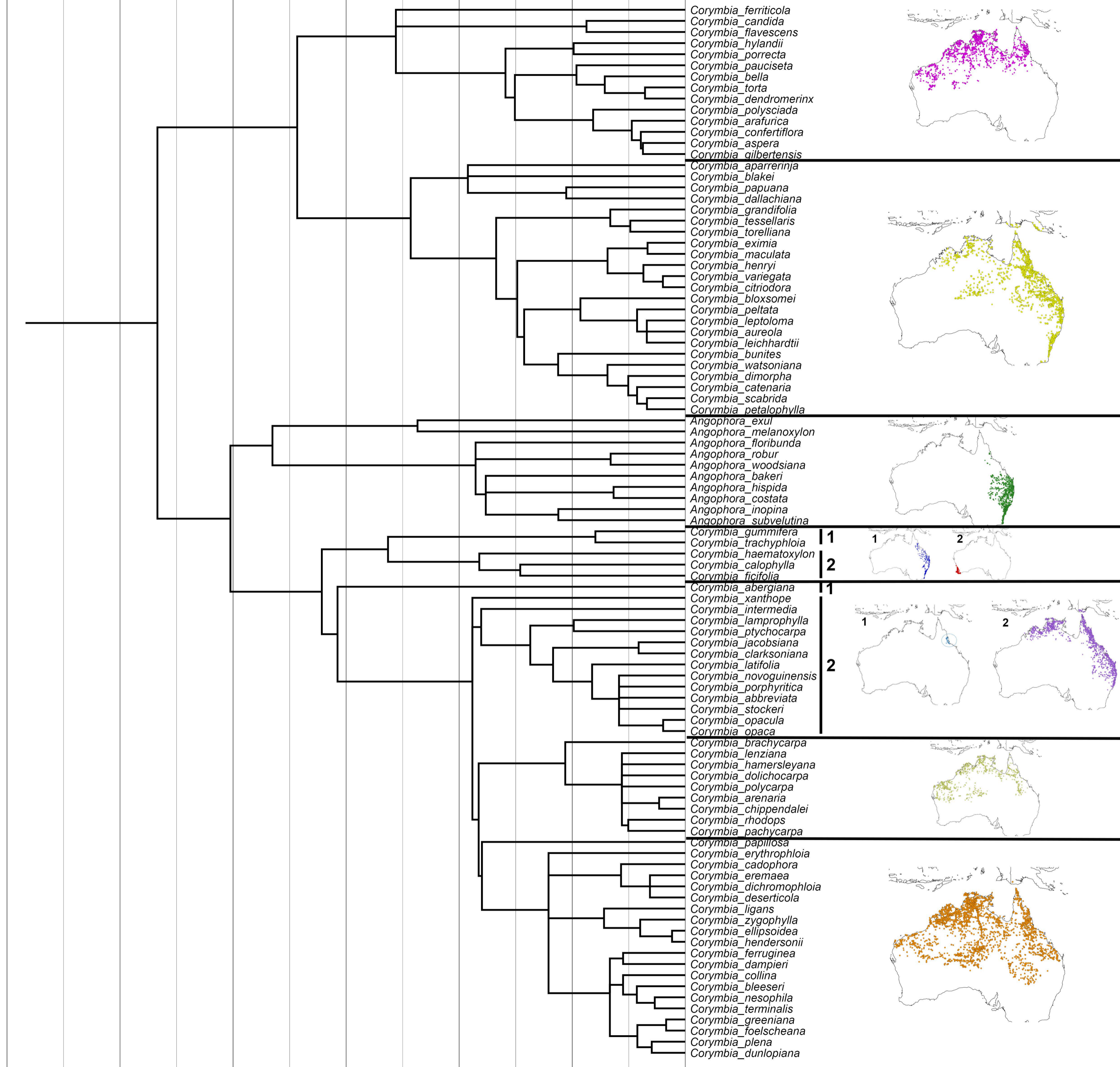


Fig. S4. The *Corymbia* + *Angophora* part of the maximum likelihood-1 phylogeny, with tree sections mapped using geographic occurrences from the Australasian Virtual Herbarium. (See following page.)



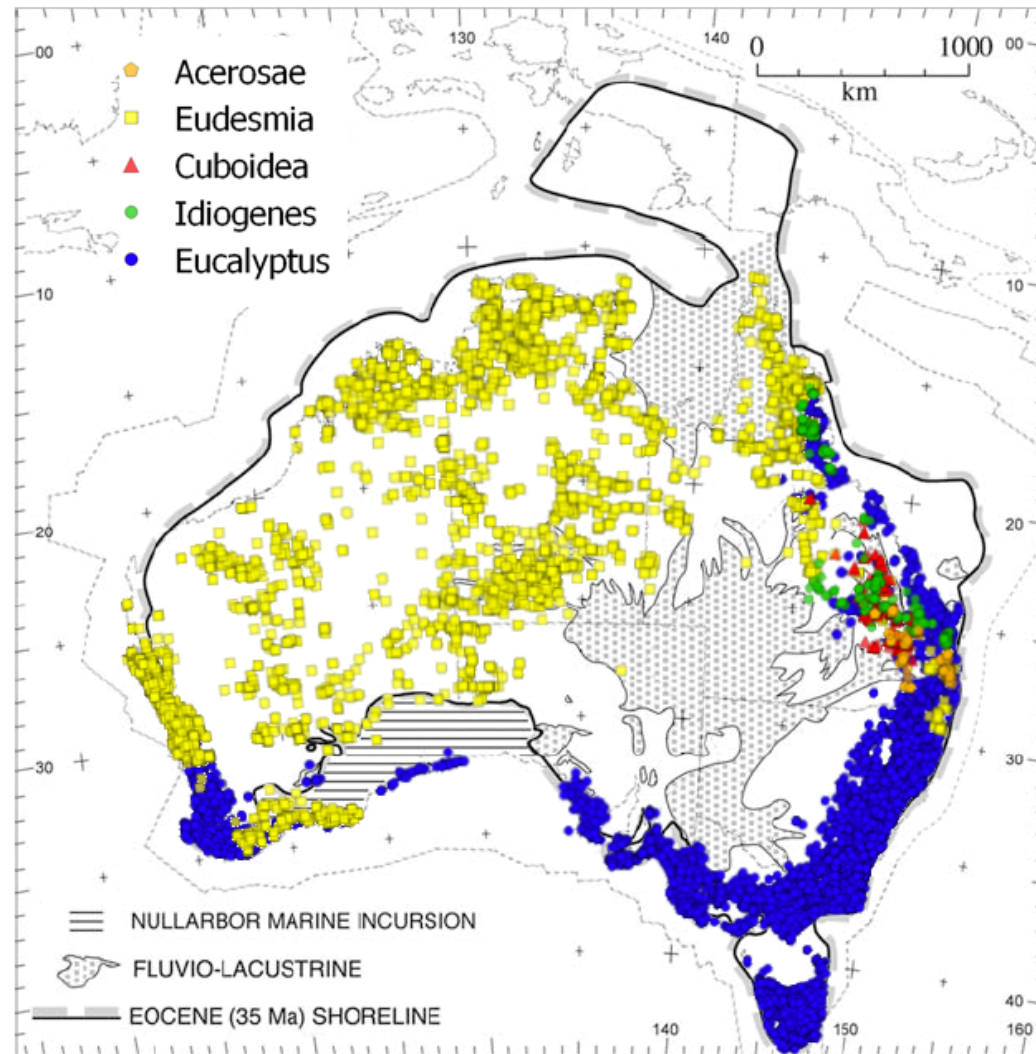


Fig. S5. The distribution of *Acerosa*, *Eudesmia*, *Cuboidea*, *Idiogenes* and *Eucalyptus* mapped onto an Eocene coastline map after Ladiges *et al.* (2010) and Veevers (2000).

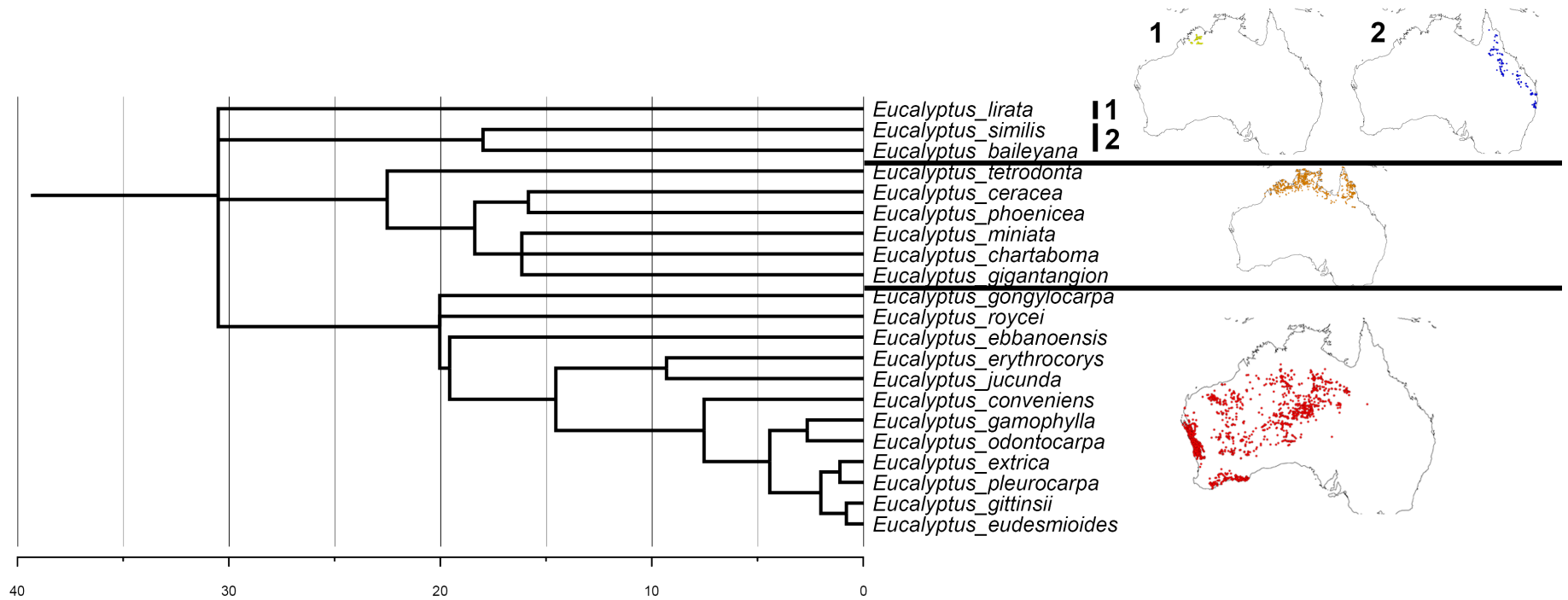


Fig. S6. The eudesmid part of the maximum likelihood-1 phylogeny, with tree sections mapped using geographic occurrences from the Australasian Virtual Herbarium.

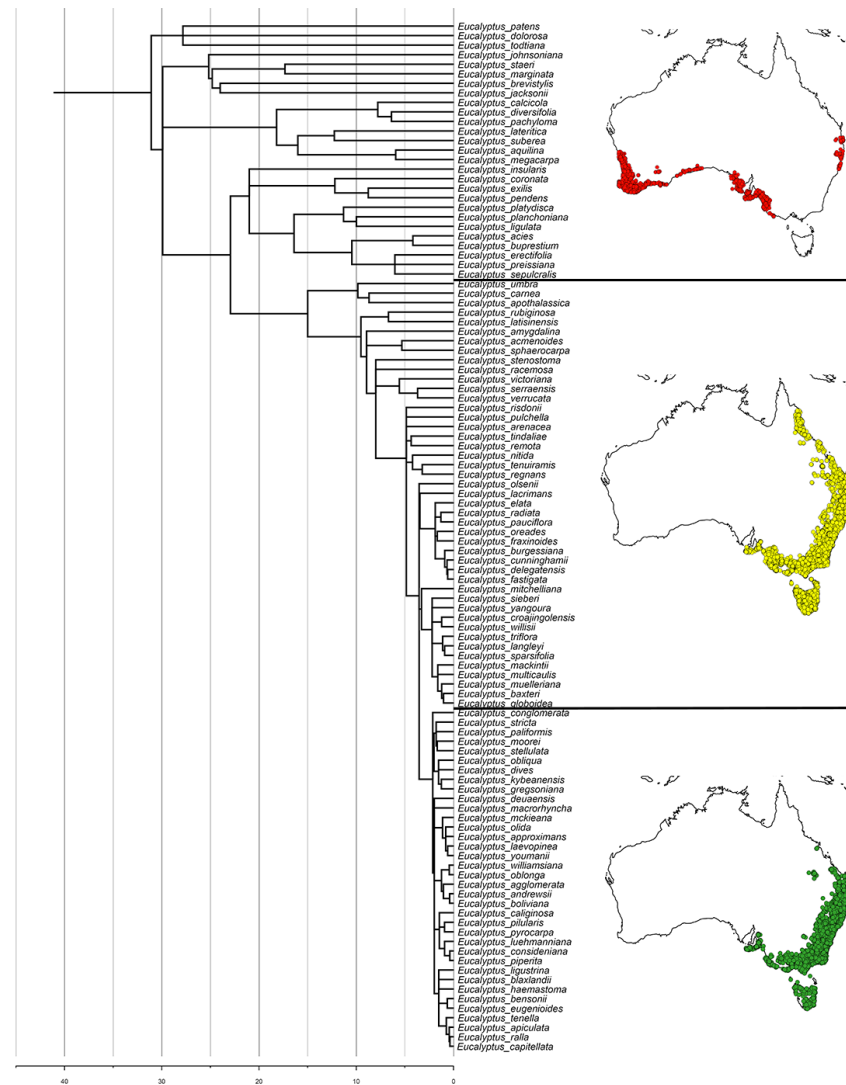


Fig. S7. The monocalypt part of the maximum likelihood-1 phylogeny, with the tree sections mapped using geographic occurrences from the Australasian Virtual Herbarium. The eastern Australian localities for the basal grade in this group (the section mapped with red dots) represent only two species (*Eucalyptus diversifolia* in the south and *E. planchoniana* in the north) and is otherwise predominantly south-western Australian in distribution.

Fig. S8. The symphyomyrt part of the maximum likelihood-1 phylogeny, with tree sections mapped using geographic occurrences from the Australasian Virtual Herbarium. (See following page.)

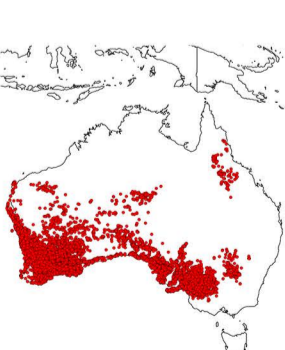
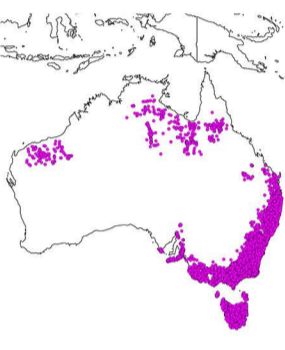
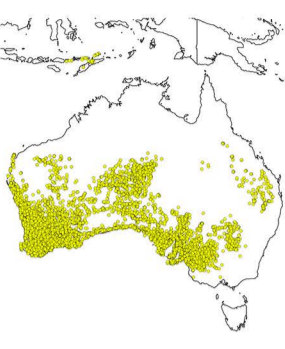
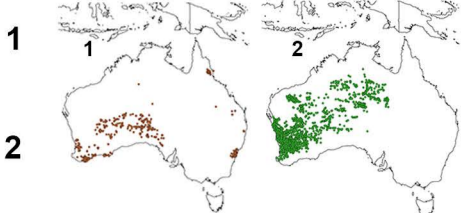
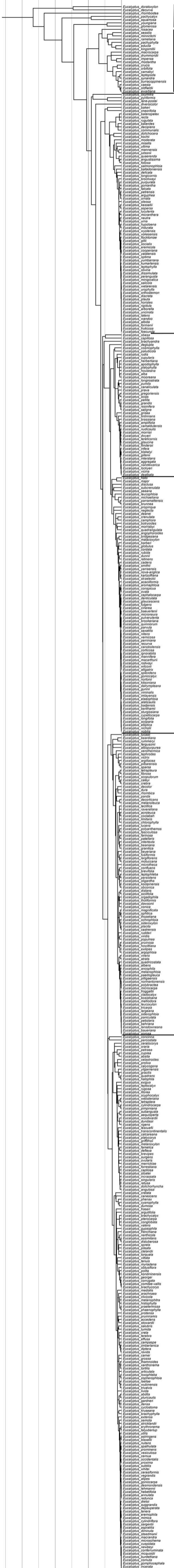


Table S1. Accession, voucher and GenBank numbers of species used in the eucalypt phylogeny study

Taxa with an asterisk are where a possible incorrect sequence or misidentified voucher represents the species. Sources with a double asterisk are herbarium specimens. ANBG, Australian National Botanic Garden; ETS, external transcribed spacer; ITS, internal transcribed spacer

Taxon	Status	Accepted name	Authority	Collection source	ETS accession	ITS accession	<i>matK</i> accession	<i>psbA</i> accession
<i>Acmena smithii</i>	Synonym	<i>Syzygium smithii</i>	(Poir.) Nied.	GenBank	AM489889	AM234137	DQ088545	AM489808
<i>Agonis flexuosa</i>	Accepted		(Muhl. ex Willd.) Sweet	GenBank	EU850635	DQ499115	AF184711	–
<i>Allosyncarpia ternata</i>	Accepted		S.T.Blake	GenBank	DQ352477	DQ352477	–	AF190370
<i>Amomyrtus luma</i>	Accepted		(Molina) D.Legrand & Kausel	GenBank	AM489892	AM234073	–	AM489811
<i>Angophora bakeri</i> subsp. <i>bakeri</i>	Accepted		C.C.Hall	CANB 786317**	KT631411	KT630893	KT632621	KT632063
<i>Angophora costata</i> subsp. <i>costata</i>	Accepted		(Gaertn.) Hochr. ex Britten	CANB 786256**	KT631412	–	KT632622	KT632064
<i>Angophora exul</i>	Accepted		K.D.Hill	NSW 573034**	KT631413	KT630894	KT632623	KT632065
<i>Angophora floribunda</i>	Accepted		(Sm.) Sweet	CANB 786321**	KT631414	KT630895	–	AF190375
<i>Angophora hispida</i>	Accepted		(Sm.) Blaxell	NSW 589284**	KT631415	KT630896	KT632624	KT632066
<i>Angophora inopina</i>	Accepted		K.D.Hill	CANB 786238**	KT631416	KT630897	KT632625	KT632067
<i>Angophora melanoxydon</i>	Accepted		F.Muell. ex R.T.Baker	NSW 785602**	KT631417	KT630898	KT632626	KT632068
<i>Angophora robur</i>	Accepted		L.A.S.Johnson & K.D.Hill	NSW 537287**	KT631418	KT630899	KT632627	–
<i>Angophora subvelutina</i>	Accepted		F.Muell.	CANB 786273**	KT631419	KT630900	KT632628	KT632069
<i>Angophora woodsiana</i>	Accepted		F.M.Bailey	CANB 786271**	KT631420	KT630901	KT632629	KT632070
<i>Arillastrum gummiferum</i>	Accepted		(Brongn. & Gris) Pancher ex Baill.	GenBank	DQ352479	DQ352479	AF368198	AF190372
<i>Cloezia floribunda</i>	Accepted		Brongn. & Gris	GenBank	AY606255	AF172767	AY521533	–
<i>Corymbia abbreviata</i>	Accepted		(Blakely & Jacobs) K.D.Hill & L.A.S.Johnson	CANB 459002**	KT631421	DQ993136	–	–
<i>Corymbia abergiana</i>	Accepted		(F.Muell.) K.D.Hill & L.A.S.Johnson	Currency Creek 1303	KT631422	DQ993145	–	KT632071
<i>Corymbia aparrerinja</i>	Accepted		K.D.Hill & L.A.S.Johnson	CANB 785580**	KT631423	KT630902	KT632630	KT632072
<i>Corymbia arafurica</i>	Accepted		K.D.Hill & L.A.S.Johnson	CANB 557707**	KT631424	KT630903	KT632631	KT632073
<i>Corymbia arenaria</i>	Accepted		(Blakely) K.D.Hill & L.A.S.Johnson	CANB 785523**	KT631425	KT630904	KT632632	KT632074
<i>Corymbia aspera</i>	Accepted		(F.Muell.) K.D.Hill & L.A.S.Johnson	CANB 785505**	KT631426	–	–	–
<i>Corymbia aureola</i>	Accepted		(Brooker & A.R.Bean) K.D.Hill & L.A.S.Johnson	CANB 582839**	KT631427	GQ366352	KT632633	KT632075
<i>Corymbia bella</i>	Accepted		K.D.Hill & L.A.S.Johnson	CANB 785527**	–	DQ993123	KT632634	–
<i>Corymbia blakei</i>	Accepted		K.D.Hill & L.A.S.Johnson	CANB 582767**	KT631428	–	–	–
<i>Corymbia bleeseri</i>	Accepted		(Blakely) K.D.Hill & L.A.S.Johnson	CANB 785481	KT631429	KT630905	KT632635	KT632076
<i>Corymbia bloxsomei</i>	Accepted		(Maiden) K.D.Hill & L.A.S.Johnson	Currency Creek 687	KT631430	GQ366353	KT632636	–
<i>Corymbia brachycarpa</i>	Accepted		(D.J.Carr & S.G.M.Carr) K.D.Hill & L.A.S.Johnson	Mt Annan 891880	KT631431	DQ352484	KT632637	KT632077
<i>Corymbia bunites</i>	Accepted		(Brooker & A.R.Bean) K.D.Hill & L.A.S.Johnson	Currency Creek 711	KT631432	KT630906	KT632638	KT632078

Taxon	Status	Accepted name	Authority	Collection source	ETS accession	ITS accession	<i>matK</i> accession	<i>psbA</i> accession
<i>Corymbia cadophora</i> subsp. <i>cadophora</i>	Accepted		K.D.Hill & L.A.S.Johnson	CANB 785542**	KT631433	KT630907	KT632639	KT632079
<i>Corymbia calophylla</i>	Accepted		(R.Br. ex Lindl.) K.D.Hill & L.A.S.Johnson	Currency Creek 1160	KT631434	KT630908	HQ287615	KT632080
<i>Corymbia candida</i> subsp. <i>dispodes</i>	Accepted		K.D.Hill & L.A.S.Johnson	Currency Creek 2752	KT631435	KT630909	KT632640	–
<i>Corymbia catenaria</i>	Synonym	<i>Corymbia watsoniana</i> subsp. <i>capillata</i>	(Brooker & A.R.Bean) K.D.Hill & L.A.S.Johnson	Currency Creek 700	KT631436	KT630910	KT632641	–
<i>Corymbia chippendalei</i>	Accepted		(D.J.Carr & S.G.M.Carr) K.D.Hill & L.A.S.Johnson	CANB 513580**	KT631437	KT630911	–	KT632081
<i>Corymbia citriodora</i>	Accepted		(Hook.) K.D.Hill & L.A.S.Johnson	Currency Creek 698	KT631438	AF390461	KT632642	KT632082
<i>Corymbia clarksoniana</i>	Accepted		(D.J.Carr & S.G.M.Carr) K.D.Hill & L.A.S.Johnson	ANBG 643951	KT631439	KT630912	KT632643	KT632083
<i>Corymbia collina</i>	Accepted		(W.Fitzg.) K.D.Hill & L.A.S.Johnson	CANB 785553**	KT631440	KT630913	KT632644	KT632084
<i>Corymbia confertiflora</i>	Accepted		(Kippist ex F.Muell.) K.D.Hill & L.A.S.Johnson	CANB 785485**	KT631441	KT630914	KT632645	KT632085
<i>Corymbia dallachiana</i>	Accepted		(Benth.) K.D.Hill & L.A.S.Johnson	CANB 697829**	KT631442	KT630915	KT632646	KT632086
<i>Corymbia dampieri</i>	Synonym	<i>Corymbia greeniana</i>	(D.J.Carr & S.G.M.Carr) K.D.Hill & L.A.S.Johnson	GenBank	DQ352493	GQ366359	–	–
<i>Corymbia dendromerinx</i>	Accepted		K.D.Hill & L.A.S.Johnson	CANB 644448**	KT631443	GQ366360	KT632647	–
<i>Corymbia deserticola</i> subsp. <i>deserticola</i>	Accepted		(S.G.M.Carr) K.D.Hill & L.A.S.Johnson	CANB 804353**	KT631444	DQ993135	KT632648	–
<i>Corymbia dichromophloia</i>	Accepted		(F.Muell.) K.D.Hill & L.A.S.Johnson	CANB 785493**	KT631445	KT630916	KT632649	KT632087
<i>Corymbia dimorpha</i>	Synonym	<i>Corymbia peltata</i>	(Benth.) K.D.Hill & L.A.S.Johnson	GenBank	DQ352496	GQ366362	–	–
<i>Corymbia dolichocarpa</i>	Synonym	<i>Corymbia clarksoniana</i>	(D.J.Carr & S.G.M.Carr) K.D.Hill & L.A.S.Johnson	GenBank	DQ352497	GQ366363	–	–
<i>Corymbia dunlopiana</i>	Accepted		K.D.Hill & L.A.S.Johnson	CANB 640209**	KT631446	KT630917	KT632650	KT632088
<i>Corymbia ellipsoidea</i>	Accepted		(D.J.Carr & S.G.M.Carr) K.D.Hill & L.A.S.Johnson	Mt Annan 904974	KT631447	–	KT632651	KT632089
<i>Corymbia eremaea</i> subsp. <i>eremaea</i>	Accepted		(D.J.Carr & S.G.M.Carr) K.D.Hill & L.A.S.Johnson	Currency Creek 1708	KT631448	KT630918	KT632652	KT632090
<i>Corymbia erythrophloia</i>	Accepted		(Blakely) K.D.Hill & L.A.S.Johnson	Mt Annan 891984	KT631449	KT630919	KT632653	KT632091
<i>Corymbia eximia</i>	Accepted		(Schauer) K.D.Hill & L.A.S.Johnson	ANBG 62889	KT631450	AF190360	KT632654	KT632092
<i>Corymbia ferriticola</i>	Accepted		(Brooker & Edgecombe) K.D.Hill & L.A.S.Johnson	CANB 804359**	KT631451	KT630920	KT632655	KT632093
<i>Corymbia ferruginea</i> subsp. <i>ferruginea</i>	Accepted		(Schauer) K.D.Hill & L.A.S.Johnson	CANB 785503**	–	KT630921	KT632656	KT632094
<i>Corymbia ficifolia</i>	Accepted		(F.Muell.) K.D.Hill & L.A.S.Johnson	ANBG c208	DQ352499	AF390451	KT632657	–
<i>Corymbia flavescens</i>	Accepted		K.D.Hill & L.A.S.Johnson	CANB 785561**	DQ352500	KT630922	KT632658	–

Taxon	Status	Accepted name	Authority	Collection source	ETS accession	ITS accession	<i>matK</i> accession	<i>psbA</i> accession
<i>Corymbia foelscheana</i>	Accepted		(F.Muell.) K.D.Hill & L.A.S.Johnson	CANB 785474**	KT631452	KT630923	KT632659	KT632095
<i>Corymbia gilbertensis</i>	Accepted		(Maiden & Blakely) K.D.Hill & L.A.S.Johnson	CANB 739029**	KT631453	–	–	–
<i>Corymbia grandifolia</i>	Accepted		(R.Br. ex Benth.) K.D.Hill & L.A.S.Johnson	CANB 739034**	KT631454	KT630924	KT632660	KT632096
<i>Corymbia greeniana</i>	Accepted		(D.J.Carr & S.G.M.Carr) K.D.Hill & L.A.S.Johnson	CANB 785522**	KT631455	KT630925	KT632661	KT632097
<i>Corymbia gummifera</i>	Accepted		(Gaertn.) K.D.Hill & L.A.S.Johnson	Currency Creek 1228	KT631456	AF390463	KT632662	KT632098
<i>Corymbia haematoxylon</i>	Accepted		(Maiden) K.D.Hill & L.A.S.Johnson	Currency Creek 1147	KT631457	KT630926	–	–
<i>Corymbia hamersleyana</i>	Accepted		(D.J.Carr & S.G.M.Carr) K.D.Hill & L.A.S.Johnson	CANB 804358**	DQ352503	KT630927	KT632663	KT632100
<i>Corymbia hendersonii</i>	Accepted		K.D.Hill & L.A.S.Johnson	Currency Creek 701	KT631458	GQ366365	–	KT632101
<i>Corymbia henryi</i>	Accepted		(S.T.Blake) K.D.Hill & L.A.S.Johnson	ANBG 8910948	KT631459	AF390457	KT632664	KT632102
<i>Corymbia hylandii</i>	Accepted		(D.J.Carr & S.G.M.Carr) K.D.Hill & L.A.S.Johnson	CANB 738922**	–	–	–	KT632103
<i>Corymbia intermedia</i>	Accepted		(F.Muell. ex R.T.Baker) K.D.Hill & L.A.S.Johnson	Currency Creek 708	KT631460	KT630928	HQ287616	KT632104
<i>Corymbia jacobiana</i>	Accepted		(Blakely) K.D.Hill & L.A.S.Johnson	CANB 558528**	KT631461	DQ993127	–	KT632105
<i>Corymbia lamprophylla</i>	Accepted		(Brooker & A.R.Bean) K.D.Hill & L.A.S.Johnson	Mt Annan 842093	KT631462	–	KT632665	KT632106
<i>Corymbia latifolia</i>	Accepted		(F.Muell.) K.D.Hill & L.A.S.Johnson	CANB 785515**	KT631463	–	–	–
<i>Corymbia leichhardtii</i>	Accepted		(F.M.Bailey) K.D.Hill & L.A.S.Johnson	Mt Annan 891967	KT631464	DQ993122	KT632666	KT632107
<i>Corymbia lenziana</i>	Accepted		(D.J.Carr & S.G.M.Carr) K.D.Hill & L.A.S.Johnson	CANB 794064**	KT631465	–	KT632667	KT632108
<i>Corymbia leptoloma</i>	Accepted		(Brooker & A.R.Bean) K.D.Hill & L.A.S.Johnson	Currency Creek 1302	DQ352508	GQ366367	KT632668	KT632109
<i>Corymbia ligans</i> subsp. <i>ligans</i>	Accepted		K.D.Hill & L.A.S.Johnson	Mt Annan 892078	DQ352509	GQ366368	–	–
<i>Corymbia maculata</i>	Accepted		(Hook.) K.D.Hill & L.A.S.Johnson	ANBG 7800470	KT631466	AF058461	KT632669	KT632110
<i>Corymbia nesophila</i>	Accepted		(Blakely) K.D.Hill & L.A.S.Johnson	CANB 785518**	KT631467	–	KT632670	–
<i>Corymbia novoguineensis</i>	Accepted		(D.J.Carr & S.G.M.Carr) K.D.Hill & L.A.S.Johnson	CANB 738912**	KT631468	–	–	KT632111
<i>Corymbia opaca</i>	Synonym	<i>Corymbia terminalis</i>	(F.Muell.) K.D.Hill & L.A.S.Johnson	GenBank	DQ352511	DQ993124	–	–
<i>Corymbia opacula</i>	Accepted		L.A.S.Johnson	GenBank	–	DQ993125	–	–
<i>Corymbia pachycarpa</i>	Accepted		K.D.Hill & L.A.S.Johnson	CANB 785564**	KT631469	–	–	–
<i>Corymbia papillosa</i>	Accepted		K.D.Hill & L.A.S.Johnson	CANB 564789**	KT631470	–	–	–
<i>Corymbia papuana</i>	Accepted		(F.Muell.) K.D.Hill & L.A.S.Johnson	CANB 583122**	KT631471	AF190359	KT632671	KT632112

Taxon	Status	Accepted name	Authority	Collection source	ETS accession	ITS accession	<i>matK</i> accession	<i>psbA</i> accession
<i>Corymbia pauciseta</i>	Accepted		K.D.Hill & L.A.S.Johnson	CANB 448845**	KT631472	KT630929	KT632672	KT632113
<i>Corymbia peltata</i>	Accepted		(Benth.) K.D.Hill & L.A.S.Johnson	Currency Creek 2505	KT631473	KT630930	KT632673	KT632114
<i>Corymbia petalophylla</i>	Accepted		(Brooker & A.R.Bean) K.D.Hill & L.A.S.Johnson	Mt Annan 892019	KT631474	GQ366370	KT632674	KT632115
<i>Corymbia plena</i>	Accepted		K.D.Hill & L.A.S.Johnson	CANB 660150**	KT631475	KT630931	–	KT632116
<i>Corymbia polycarpa</i>	Accepted		(F.Muell.) K.D.Hill & L.A.S.Johnson	CANB 785478**	KT631476	AF390452	–	KT632117
<i>Corymbia polysciada</i>	Accepted		(F.Muell.) K.D.Hill & L.A.S.Johnson	CANB 785475**	KT631477	KT630932	KT632675	KT632118
<i>Corymbia porphyritica</i>	Synonym	<i>Corymbia ellipsoidea</i>	(D.J.Carr & S.G.M.Carr) K.D.Hill & L.A.S.Johnson	GenBank	DQ352516	–	–	–
<i>Corymbia porrecta</i>	Accepted		(S.T.Blake) K.D.Hill & L.A.S.Johnson	CANB 628340**	KT631478	DQ993134	KT632676	KT632119
<i>Corymbia ptychocarpa</i> subsp. <i>ptychocarpa</i>	Accepted		(F.Muell.) K.D.Hill & L.A.S.Johnson	CANB 785501**	KT631479	KT630933	KT632677	KT632120
<i>Corymbia rhodops</i>	Accepted		(D.J.Carr & S.G.M.Carr) K.D.Hill & L.A.S.Johnson	GenBank	DQ352518	–	–	–
<i>Corymbia scabrida</i>	Accepted		(Brooker & A.R.Bean) K.D.Hill & L.A.S.Johnson	Mt Annan 891868	KT631480	GQ366371	KT632678	KT632121
<i>Corymbia stockeri</i> subsp. <i>stockeri</i>	Accepted		(D.J.Carr & S.G.M.Carr) K.D.Hill & L.A.S.Johnson	GenBank	DQ352520	–	–	–
<i>Corymbia terminalis</i>	Accepted		(F.Muell.) K.D.Hill & L.A.S.Johnson	CANB 785544**	DQ352521	GQ366372	KT632679	–
<i>Corymbia tessellaris</i>	Accepted		(F.Muell.) K.D.Hill & L.A.S.Johnson	Currency Creek s.n.	KT631481	AF058457	KT632680	KT632122
<i>Corymbia torelliana</i>	Accepted		(F.Muell.) K.D.Hill & L.A.S.Johnson	Mt Annan 981102	KT631482	GQ366373	KT632681	KT632123
<i>Corymbia torta</i>	Accepted		K.D.Hill & L.A.S.Johnson	CANB 644409**	KT631483	–	–	–
<i>Corymbia trachyphloia</i> *	Accepted		(F.Muell.) K.D.Hill & L.A.S.Johnson	ANBG 60750	DQ352523	AF390455	KT632682	–
<i>Corymbia variegata</i>	Synonym	<i>Corymbia citriodora</i>	(Hook.) K.D.Hill & L.A.S.Johnson	GenBank	DQ352524	AF390462	AF368203	–
<i>Corymbia watsoniana</i> subsp. <i>watsoniana</i>	Accepted		(F.Muell.) K.D.Hill & L.A.S.Johnson	ANBG 68771	KT631484	GQ366374	KT632683	–
<i>Corymbia xanthope</i>	Accepted		(A.R.Bean & Brooker) K.D.Hill & L.A.S.Johnson	GenBank	DQ352526	GQ366375	–	–
<i>Corymbia zygophylla</i>	Accepted		(Blakely) K.D.Hill & L.A.S.Johnson	CANB 785546**	KT631485	GQ366376	KT632684	KT632125
<i>Decaspermum humile</i>	Accepted		(Sweet ex G.Don) A.J.Scott	GenBank	AM489905	AM234128	–	AM489824
<i>Eucalyptopsis alauda</i>	Accepted		Craven	CANB 704249**	KT631486	–	–	KT632126
<i>Eucalyptopsis papuana</i>	Accepted		C.T.White	GenBank	DQ352538	AF190354	AF368205	AF190388
<i>Eucalyptus abdita</i>	Accepted		Brooker & Hopper	CANB 687864**	KT631487	KT630934	KT632685	KT632127
<i>Eucalyptus absita</i>	Accepted		Grayling & Brooker	Currency Creek 1154	KT631488	KT630935	KT632686	KT632128
<i>Eucalyptus accaciiformis</i>	Accepted		H.Deane & Maiden	Currency Creek 657	KT631489	KT630936	KT632687	–
<i>Eucalyptus accedens</i>	Accepted		W.Fitzg.	Currency Creek 1164	KT631490	KT630937	KT632688	KT632129
<i>Eucalyptus acies</i>	Accepted		Brooker	CANB 610687**	KT631491	EF051489	KT632689	KT632130
<i>Eucalyptus acmenoides</i>	Accepted		Schauer	Currency Creek 2087	KT631492	KT630938	KT632690	KT632131

Taxon	Status	Accepted name	Authority	Collection source	ETS accession	ITS accession	matK accession	psbA accession
<i>Eucalyptus acroleuca</i>	Accepted		L.A.S.Johnson & K.D.Hill	CANB 593424**	KT631493	–	–	–
<i>Eucalyptus aequioperta</i>	Accepted		Brooker & Hopper	Currency Creek 3448	KT631494	KT630939	KT632691	KT632132
<i>Eucalyptus agglomerata</i>	Accepted		Maiden	Currency Creek 2928	KT631495	KT630940	KT632692	KT632133
<i>Eucalyptus aggregata*</i>	Accepted		H.Deane & Maiden	Currency Creek 1224	KT631496	KT630941	KT632693	KT632134
<i>Eucalyptus alaticaulis</i>	Accepted		R.J.Watson & Ladiges	Currency Creek 356	KT631497	KT630942	KT632694	KT632135
<i>Eucalyptus alba</i>	Accepted		Reinw. ex Blume	GenBank	–	AF390485	–	–
<i>Eucalyptus albens</i>	Accepted		Benth.	Currency Creek 2898	KT631498	AF390502	KT632695	KT632136
<i>Eucalyptus albida</i>	Accepted		Maiden & Blakely	Currency Creek 3437	KT631499	KT630943	KT632696	KT632137
<i>Eucalyptus albopurpurea</i>	Accepted		(Boomsma) D.Nicolle	Currency Creek 3180	KT631500	KT630944	KT632697	KT632138
<i>Eucalyptus alipes</i>	Accepted		(L.A.S.Johnson & K.D.Hill) D.Nicolle & Brooker	Currency Creek 3678	KT631501	KT630945	KT632698	–
<i>Eucalyptus alligatrix</i> subsp. <i>alligatrix</i>	Accepted		L.A.S.Johnson & K.D.Hill	Currency Creek 1773	KT631502	KT630946	KT632699	–
<i>Eucalyptus amplifolia</i> subsp. <i>amplifolia</i>	Accepted		Naudin	Currency Creek 604	KT631503	KT630947	KT632700	–
<i>Eucalyptus amygdalina</i>	Accepted		Labill.	CANB 481986**	KT631504	HM596032	–	KT632139
<i>Eucalyptus ancophila</i>	Accepted		L.A.S.Johnson & K.D.Hill	Mt Annan 841467	KT631505	KT630948	KT632701	–
<i>Eucalyptus andrewsii</i> subsp. <i>andrewsii</i>	Accepted		Maiden	ANBG 8410679	KT631506	–	KT632702	KT632140
<i>Eucalyptus angophoroides</i>	Accepted		R.T.Baker	Currency Creek 1745	KT631507	KT630949	KT632703	–
<i>Eucalyptus angulosa</i>	Accepted		Schauer	Currency Creek 939	KT631508	KT630950	–	KT632141
<i>Eucalyptus angustissima</i>	Accepted		F.Muell.	CANB 794337**	KT631509	KT630951	KT632704	KT632142
<i>Eucalyptus annulata</i>	Accepted		Benth.	CANB 794263**	–	–	KT632705	KT632143
<i>Eucalyptus apiculata</i>	Accepted		R.T.Baker & H.G.Sm.	Currency Creek 772	KT631510	KT630952	KT632706	KT632144
<i>Eucalyptus apodophylla</i> subsp. <i>provecta</i>	Accepted		Blakely & Jacobs	CANB 7855329**	KT631511	KT630953	KT632707	KT632145
<i>Eucalyptus apothalassica</i>	Accepted		L.A.S.Johnson & K.D.Hill	Mt Annan 842080	KT631512	KT630954	KT632708	KT632146
<i>Eucalyptus approximans</i> subsp. <i>codonocarpa</i>	Accepted		(Blakely & McKie) L.A.S.Johnson & Blaxell	ANBG 69702	KT631513	KT630955	KT632709	KT632147
<i>Eucalyptus aquilina</i>	Accepted		Brooker	GenBank	KT631514	FJ494708	–	–
<i>Eucalyptus arachneae</i> subsp. <i>arecta</i>	Accepted		Brooker & Hopper	CANB 435460**	KT631515	KT630956	KT632710	KT632148
<i>Eucalyptus arborella</i>	Accepted		Brooker & Hopper	Currency Creek 1115	KT631516	–	–	–
<i>Eucalyptus arenacea</i>	Accepted		J.C.Marginson & Ladiges	CANB 786035**	KT631517	FJ494709	KT632711	KT632149
<i>Eucalyptus argillacea</i>	Accepted		W.Fitzg. ex Maiden	CANB 785537**	KT631518	KT630957	KT632712	–
<i>Eucalyptus argophloia</i>	Accepted		Blakely	Currency Creek 686	KT631519	KT630958	KT632713	–
<i>Eucalyptus argutifolia</i>	Accepted		Grayling & Brooker	Waite Arboretum 2365B	KT631520	KT630959	KT632714	KT632150
<i>Eucalyptus argyphaea</i>	Accepted		L.A.S.Johnson & K.D.Hill	Currency Creek 3433	KT631521	KT630960	KT632715	KT632151
<i>Eucalyptus aromaphloia</i> subsp. <i>aromaphloia</i>	Accepted		Pryor & J.H.Willis	CANB 564611**	KT631522	AF058465	KT632716	KT632152
<i>Eucalyptus articulata</i>	Accepted		Brooker & Hopper	Currency Creek 520	KT631523	KT630961	KT632717	KT632153
<i>Eucalyptus aspersa</i>	Accepted		Brooker & Hopper	Currency Creek 1890	KT631524	KT630962	KT632718	KT632154
<i>Eucalyptus aspratilis</i>	Accepted		L.A.S.Johnson & K.D.Hill	Waite Arboretum 2323C	KT631525	KT630963	KT632719	KT632155
<i>Eucalyptus assimilans</i>	Accepted		L.A.S.Johnson & K.D.Hill	Currency Creek 1826	KT631526	KT630964	–	–
<i>Eucalyptus astringens</i> subsp. <i>astringens</i>	Accepted		(Maiden) Maiden	Currency Creek 3503	KT631527	KT630965	–	KT632156
<i>Eucalyptus atrata</i>	Accepted		L.A.S.Johnson & K.D.Hill	ANBG 8603434	KT631528	KT630966	KT632720	KT632157
<i>Eucalyptus badjensis</i>	Accepted		Beuzev. & Welch	Currency Creek 1767	KT631529	KT630967	KT632721	–

Taxon	Status	Accepted name	Authority	Collection source	ETS accession	ITS accession	<i>matK</i> accession	<i>psbA</i> accession
<i>Eucalyptus baeuerlenii</i>	Accepted		F.Muell.	ANBG 7810671	KT631530	KT630968	KT632722	–
<i>Eucalyptus baileyana</i>	Accepted		F.Muell.	Mt Annan 892003	FJ654425	AF390467	–	KT632158
<i>Eucalyptus bakeri</i>	Accepted		Maiden	Currency Creek 1269	KT631531	KT630969	KT632723	KT632159
<i>Eucalyptus balanites</i>	Accepted		Grayling & Brooker	CANB 687715**	KT631532	–	–	KT632160
<i>Eucalyptus balanopelex</i>	Accepted		L.A.S.Johnson & K.D.Hill	Waite Arboretum 2459	KT631533	KT630970	KT632724	KT632161
<i>Eucalyptus balladoniensis</i> subsp. <i>balladoniensis</i>	Accepted		Brooker	CANB 586833**	–	KT630971	KT632725	KT632162
<i>Eucalyptus barberi</i>	Accepted		L.A.S.Johnson & Blaxell	Currency Creek 1989	KT631534	KT630972	KT632726	KT632163
<i>Eucalyptus baueriana</i>	Accepted		Schauer	Currency Creek 1734	KT631535	KT630973	KT632727	KT632164
<i>Eucalyptus baxteri</i>	Accepted		(Benth.) J.M.Black	ANBG 8701806	KT631536	KT630974	KT632728	KT632165
<i>Eucalyptus beaniana</i>	Accepted		L.A.S.Johnson & K.D.Hill	CANB 842071**	–	KT630975	–	–
<i>Eucalyptus beardiana</i> *	Accepted		Brooker & Blaxell	CANB 632554**	KT631537	KT630976	–	KT632166
<i>Eucalyptus behriana</i>	Accepted		F.Muell.	Currency Creek 3183	KT631538	KT630977	KT632729	KT632167
<i>Eucalyptus bensonii</i>	Accepted		L.A.S.Johnson & K.D.Hill	Mt Annan 830911	KT631539	KT630978	KT632730	KT632168
<i>Eucalyptus benthamii</i>	Accepted		Maiden & Cabbage	Currency Creek 3203	KT631540	KT630979	KT632731	–
<i>Eucalyptus beyeriana</i>	Accepted		L.A.S.Johnson & K.D.Hill	Currency Creek 1761	KT631541	KT630980	KT632732	KT632169
<i>Eucalyptus blakelyi</i>	Accepted		Maiden	Currency Creek 722	KT631542	KT630981	KT632733	KT632170
<i>Eucalyptus blaxellii</i>	Accepted		L.A.S.Johnson & K.D.Hill	CANB 804415**	KT631543	KT630982	KT632734	KT632171
<i>Eucalyptus blaxlandii</i>	Accepted		Maiden & Cabbage	ANBG 8001329	KT631544	KT630983	KT632735	KT632172
<i>Eucalyptus boliviana</i>	Accepted		J.B.Williams & K.D.Hill	ANBG 518876	KT631545	KT630984	KT632736	KT632173
<i>Eucalyptus bosistoana</i>	Accepted		F.Muell.	Currency Creek 2902	KT631546	KT630985	KT632737	KT632174
<i>Eucalyptus botryoides</i>	Accepted		Sm.	Currency Creek 1739	KT631547	KT630986	KT632738	–
<i>Eucalyptus brachyandra</i>	Accepted		F.Muell.	CANB 785499**	KT631548	KT630987	KT632739	KT632175
<i>Eucalyptus brachycalyx</i>	Accepted		Blakely	Currency Creek 2245	KT631549	KT630988	KT632740	KT632176
<i>Eucalyptus brachycorys</i>	Accepted		Blakely	Currency Creek 1897	KT631550	KT630989	KT632741	KT632177
<i>Eucalyptus brachyphylla</i>	Accepted		C.A.Gardner	ANBG 9807043	KT631551	KT630990	KT632742	KT632178
<i>Eucalyptus brassiana</i>	Accepted		S.T.Blake	GenBank	KT631552	AF390483	KT632743	KT632179
<i>Eucalyptus brevifolia</i>	Accepted		F.Muell.	CANB 785549**	KT631553	KT630991	KT632744	KT632180
<i>Eucalyptus brevipes</i> *	Accepted		Brooker	CANB 692658**	KT631554	–	KT632745	–
<i>Eucalyptus brevistylis</i>	Accepted		Brooker	Currency Creek 1141	KT631555	AF390527	KT632746	KT632181
<i>Eucalyptus bridgesiana</i>	Accepted		F.Muell. ex R.T.Baker	Currency Creek 570	KT631556	KT630992	KT632747	–
<i>Eucalyptus brockwayi</i>	Accepted		C.A.Gardner	Currency Creek 2166	KT631557	AF390505	KT632748	KT632182
<i>Eucalyptus brookeriana</i> subsp. <i>brookeriana</i>	Accepted		A.M.Gray	Currency Creek 1988	KT631558	KT630993	KT632749	–
<i>Eucalyptus brunnea</i>	Accepted		L.A.S.Johnson & K.D.Hill	Currency Creek 669	KT631559	KT630994	KT632750	KT632183
<i>Eucalyptus buprestium</i>	Accepted		F.Muell.	CANB 632568**	KT631560	FJ494710	KT632751	KT632184
<i>Eucalyptus burdettiana</i>	Accepted		Blakely & H.Steedman	Currency Creek 2246	KT631561	KT630995	KT632752	–
<i>Eucalyptus burgessiana</i>	Accepted		L.A.S.Johnson & Blaxell	ANBG s.n.	KT631562	–	KT632753	KT632185
<i>Eucalyptus burracoppinensis</i>	Accepted		Maiden & Blakely	CANB 794037**	KT631563	KT630996	KT632754	KT632186
<i>Eucalyptus cadens</i>	Accepted		J.D.Briggs & Crisp	Currency Creek 1772	KT631564	KT630997	KT632755	KT632187
<i>Eucalyptus caesia</i> subsp. <i>caesia</i>	Accepted		Benth.	Currency Creek 3683	KT631565	KT630998	KT632756	KT632188
<i>Eucalyptus calcareana</i>	Accepted		Boomsma	Currency Creek 2800	KT631566	KT630999	KT632757	KT632189
<i>Eucalyptus calcicola</i> subsp. <i>calcicola</i>	Accepted		Brooker	Currency Creek 1674	KT631567	KT631000	KT632758	KT632190
<i>Eucalyptus caleyi</i> subsp. <i>caleyi</i>	Accepted		Maiden	Currency Creek 2102	KT631568	KT631001	KT632759	KT632191
<i>Eucalyptus caliginosa</i>	Accepted		Blakely & McKie	Currency Creek 1249	KT631569	–	KT632760	KT632192

Taxon	Status	Accepted name	Authority	Collection source	ETS accession	ITS accession	matK accession	psbA accession
<i>Eucalyptus calycogona</i> subsp. <i>calycogona</i>	Accepted		Turcz.	Currency Creek 1112	KT631570	KT631002	KT632761	KT632193
<i>Eucalyptus camaldulensis</i> subsp. <i>camaldulensis</i>	Accepted		Dehnh.	GenBank	DQ352528	AF190363	HQ995676	AF190380
<i>Eucalyptus campaspe</i>	Accepted		S.Moore	Currency Creek 2147	KT631571	KT631003	KT632762	KT632194
<i>Eucalyptus camphora</i> subsp. <i>camphora</i>	Accepted		F.Muell. ex R.T.Baker	Currency Creek 762	KT631572	KT631004	KT632763	–
<i>Eucalyptus canaliculata</i>	Accepted		Maiden	Currency Creek 1232	KT631573	KT631005	KT632764	KT632195
<i>Eucalyptus canescens</i> subsp. <i>canescens</i>	Accepted		Nicolle	Currency Creek 487	KT631574	KT631006	KT632765	KT632196
<i>Eucalyptus canobolensis</i>	Accepted		(L.A.S.Johnson & K.D.Hill) J.T.Hunter	Currency Creek 1222	KT631575	KT631007	KT632766	–
<i>Eucalyptus capillosa</i>	Accepted		Brooker & Hopper	Currency Creek 2192	KT631576	KT631008	KT632767	KT632197
<i>Eucalyptus capitellata</i>	Accepted		Sm.	Currency Creek 640	KT631577	–	KT632768	KT632198
<i>Eucalyptus captiosa</i>	Accepted		Brooker & Hopper	CANB 799340**	KT631578	KT631009	KT632769	KT632199
<i>Eucalyptus carnabyi</i>	Accepted		Blakely & H.Steedman	CANB 632591**	KT631579	–	–	KT632200
<i>Eucalyptus carnea</i>	Accepted		F.Muell. ex R.T.Baker	Currency Creek 1236	KT631580	KT631010	KT632770	–
<i>Eucalyptus carnei</i>	Accepted		C.A.Gardner	Currency Creek 547	KT631581	KT631011	KT632771	KT632201
<i>Eucalyptus castrensis</i>	Accepted		K.D.Hill	ANBG 653995	KT631582	KT631012	KT632772	KT632202
<i>Eucalyptus celastroides</i> subsp. <i>celastroides</i>	Accepted		Turcz.	Currency Creek 132	KT631583	KT631013	KT632773	KT632203
<i>Eucalyptus cephalocarpa</i>	Accepted		Blakely	Currency Creek 1730	KT631584	KT631014	KT632774	KT632204
<i>Eucalyptus ceracea</i>	Accepted		Brooker & Done	CANB 551306**	KT631585	AF058459	–	KT632205
<i>Eucalyptus cerasiformis</i>	Accepted		Brooker & Blaxell	CANB 586828**	KT631586	KT631015	–	–
<i>Eucalyptus ceratocorys</i>	Accepted		(Blakely) L.A.S.Johnson & K.D.Hill	Currency Creek 2232	KT631587	KT631016	KT632775	KT632206
<i>Eucalyptus cernua</i>	Accepted		Brooker & Hopper	Currency Creek 3574	KT631588	KT631017	KT632776	KT632207
<i>Eucalyptus chartaboma</i>	Accepted		D.Nicolle	CANB 703248**	KT631589	FJ654412	–	KT632208
<i>Eucalyptus chlorophylla</i>	Accepted		Brooker & Done	CANB 785565**	KT631590	KT631018	–	KT632209
<i>Eucalyptus cinerea</i> subsp. <i>triplex</i>	Accepted		(L.A.S.Johnson & K.D.Hill) Brooker	ANBG 8703938	KT631591	KT631019	KT632777	KT632210
<i>Eucalyptus cladocalyx</i>	Accepted		F.Muell.	ANBG 652722	KT631592	EF488228	KT632778	KT632211
<i>Eucalyptus clelandii</i>	Accepted		(Maiden) Maiden	Currency Creek 333	KT631593	KT631020	KT632779	KT632212
<i>Eucalyptus clivicola</i>	Accepted		Brooker & Hopper	Currency Creek 3779	KT631594	KT631021	KT632780	KT632213
<i>Eucalyptus cloeziana</i>	Accepted		F.Muell.	Currency Creek 696	KT631595	AF390522	KT632781	KT632214
<i>Eucalyptus cneorifolia</i>	Accepted		A.Cunn. ex DC.	Currency Creek 75	KT631596	KT631022	KT632782	KT632215
<i>Eucalyptus comitae-vallis</i>	Accepted		Maiden	Currency Creek 2767	KT631597	KT631023	KT632783	KT632216
<i>Eucalyptus communalis</i>	Accepted		Brooker & Hopper	Currency Creek 200	KT631598	KT631024	KT632784	KT632217
<i>Eucalyptus concinna</i> *	Accepted		Maiden & Blakely	Currency Creek 2631	KT631599	KT631025	KT632785	KT632218
<i>Eucalyptus conferruminata</i> subsp. <i>recherche</i>	Accepted		D.J.Carr & S.G.M.Carr	Currency Creek 4588	KT631600	–	KT632786	KT632219
<i>Eucalyptus confluens</i>	Accepted		W.Fitzg. ex Maiden	CANB 785543**	KT631601	KT631026	KT632787	–
<i>Eucalyptus conglobata</i> subsp. <i>conglobata</i>	Accepted		(Benth.) Maiden	Currency Creek 3588	KT631602	KT631027	KT632788	KT632220
<i>Eucalyptus conglomerata</i>	Accepted		Maiden & Blakely	GenBank	–	FJ494712	–	–
<i>Eucalyptus conica</i>	Accepted		H.Deane & Maiden	Waite Arboretum 35	KT631603	KT631028	KT632789	KT632221
<i>Eucalyptus consideniana</i>	Accepted		Maiden	Currency Creek 611	KT631604	KT631029	KT632790	KT632222
<i>Eucalyptus conspicua</i>	Accepted		L.A.S.Johnson & K.D.Hill	Currency Creek 4516	KT631605	KT631030	KT632791	–

Taxon	Status	Accepted name	Authority	Collection source	ETS accession	ITS accession	matK accession	psbA accession
<i>Eucalyptus conveniens</i>	Accepted		L.A.S.Johnson & K.D.Hill	Currency Creek 3516	FJ654419	FJ654402	–	FJ654350
<i>Eucalyptus coolabah</i>	Accepted		Blakely & Jacobs	CANB 785547**	KT631606	KT631031	KT632792	KT632223
<i>Eucalyptus cooperiana</i>	Accepted		F.Muell.	Currency Creek 1813	KT631607	KT631032	KT632793	KT632224
<i>Eucalyptus cordata</i>	Accepted		Labill.	ANBG 8804430	KT631608	KT631033	KT632794	KT632225
<i>Eucalyptus cornuta</i>	Accepted		Labill.	Currency Creek 3748	–	AF390496	–	KT632226
<i>Eucalyptus coronata</i>	Accepted		C.A.Gardner	Currency Creek 2247	KT631609	KT631034	KT632795	KT632227
<i>Eucalyptus corrugata</i>	Accepted		Luehm.	Currency Creek 3483	KT631610	KT631035	KT632796	KT632228
<i>Eucalyptus corticosa</i>	Synonym	<i>Eucalyptus argophloia</i>	Blakely	ANBG 54339	KT631611	KT631036	KT632797	–
<i>Eucalyptus cosmophylla</i>	Accepted		F.Muell.	ANBG 8409259	KT631612	EF488226	KT632798	KT632229
<i>Eucalyptus crebra</i>	Accepted		F.Muell.	ANBG 732903	KT631613	AF390503	KT632799	KT632230
<i>Eucalyptus crenulata</i>	Accepted		Blakely & Beuzev.	Currency Creek 1775	KT631614	KT631037	KT632800	–
<i>Eucalyptus creta</i>	Accepted		L.A.S.Johnson & K.D.Hill	Currency Creek 3606	KT631615	KT631038	KT632801	–
<i>Eucalyptus cretata</i>	Accepted		P.J.Lang & Brooker	Currency Creek 1689	KT631616	KT631039	KT632802	KT632231
<i>Eucalyptus croajingolensis</i>	Accepted		L.A.S.Johnson & K.D.Hill	Currency Creek 1744	KT631617	AF058497	KT632803	KT632232
<i>Eucalyptus crucis</i> subsp. <i>crucis</i>	Accepted		Maiden	Currency Creek 3681	KT631618	KT631040	KT632804	KT632233
<i>Eucalyptus cunninghamii</i>	Accepted		Sweet	ANBG 9806132	KT631619	KT631041	KT632805	KT632234
<i>Eucalyptus cuprea</i>	Accepted		Brooker & Hopper	Currency Creek 3536	KT631620	KT631042	KT632806	KT632235
<i>Eucalyptus cupularis</i>	Accepted		C.A.Gardner	CANB 785563**	KT631621	KT631043	KT632807	KT632236
<i>Eucalyptus curtisii</i>	Accepted		Blakely & C.T.White	Currency Creek 2108	KT631622	AF390524	AF368206	KT632237
<i>Eucalyptus cuspidata*</i>	Synonym	<i>Eucalyptus angulosa</i>	Schauer	Currency Creek 3746	KT631623	–	KT632808	KT632238
<i>Eucalyptus cyanophylla</i>	Accepted		Brooker	Currency Creek 983	KT631624	KT631044	KT632809	KT632239
<i>Eucalyptus cyclostoma*</i>	Accepted		Brooker	ANBG 9903101	KT631625	KT631045	KT632810	KT632240
<i>Eucalyptus cylindriflora</i>	Accepted		Maiden & Blakely	CANB 794327**	KT631626	KT631046	KT632811	KT632241
<i>Eucalyptus cylindrocarpa</i>	Accepted		Blakely	Waite Arboretum 1944A	KT631627	KT631047	KT632812	KT632242
<i>Eucalyptus cypellocarpa</i>	Accepted		L.A.S.Johnson	Currency Creek 2946	KT631628	KT631048	KT632813	KT632243
<i>Eucalyptus dalrympleana</i> subsp. <i>dalrympleana</i>	Accepted		Maiden	ANBG 7804378	KT631629	KT631049	KT632814	–
<i>Eucalyptus dawsonii</i>	Accepted		R.T.Baker	Currency Creek 743	KT631630	–	–	KT632244
<i>Eucalyptus dealbata</i>	Accepted		A.Cunn. ex Schauer	Currency Creek 723	KT631631	KT631050	KT632815	KT632245
<i>Eucalyptus deanei</i>	Accepted		Maiden	Currency Creek 633	KT631632	KT631051	KT632816	–
<i>Eucalyptus decipiens</i> subsp. <i>decipiens</i>	Accepted		Endl.	Currency Creek 3700	KT631633	KT631052	KT632817	KT632246
<i>Eucalyptus decolor</i>	Accepted		A.R.Bean & Brooker	Currency Creek 2545	KT631634	KT631053	KT632818	KT632247
<i>Eucalyptus decorticans</i>	Accepted		(F.M.Bailey) Maiden	ANBG 73445	KT631635	KT631054	KT632819	KT632248
<i>Eucalyptus decurva</i>	Accepted		F.Muell.	CANB 794258**	KT631636	KT631055	KT632820	KT632249
<i>Eucalyptus deflexa</i>	Accepted		Brooker	Currency Creek 1110	KT631637	KT631056	KT632821	KT632250
<i>Eucalyptus deglupta</i>	Accepted		Blume	BG 859	DQ352531	KT631057	KT632822	KT632251
<i>Eucalyptus delegatensis</i> subsp. <i>delegatensis</i>	Accepted		F.Muell. ex R.T.Baker	GenBank	KT631638	AF058480	–	–
<i>Eucalyptus delicata</i>	Accepted		L.A.S.Johnson & K.D.Hill	Currency Creek 2262	KT631639	AF390507	KT632823	KT632252
<i>Eucalyptus densa</i> subsp. <i>densa</i>	Accepted		Brooker & Hopper	Currency Creek 1111	KT631640	KT631058	–	–
<i>Eucalyptus denticulata</i>	Accepted		I.O.Cook & Ladiges	Currency Creek 1743	KT631641	KT631059	KT632824	KT632253
<i>Eucalyptus depauperata</i>	Accepted		L.A.S.Johnson & K.D.Hill	CANB 794299**	KT631642	KT631060	KT632825	KT632254
<i>Eucalyptus desmondensis</i>	Accepted		Maiden & Blakely	Currency Creek 192	KT631643	KT631061	KT632826	KT632255
<i>Eucalyptus deuaensis</i>	Accepted		Boland & P.M.Gilmour	Currency Creek 1769	KT631644	FJ494714	KT632827	KT632256
<i>Eucalyptus dielsii</i>	Accepted		C.A.Gardner	Currency Creek 3596	KT631645	KT631062	KT632828	KT632257

Taxon	Status	Accepted name	Authority	Collection source	ETS accession	ITS accession	matK accession	psbA accession
<i>Eucalyptus diminuta</i>	Accepted		Brooker & Hopper	Currency Creek 1168	KT631646	KT631063	KT632829	KT632258
<i>Eucalyptus diptera</i>	Accepted		C.R.P.Andrews	Currency Creek 146	KT631647	KT631064	KT632830	KT632259
<i>Eucalyptus disclusa</i>	Accepted		L.A.S.Johnson & Blaxell	Currency Creek 707	KT631648	KT631065	KT632831	KT632260
<i>Eucalyptus discreta</i>	Accepted		Brooker	Currency Creek 1091	KT631649	KT631066	KT632832	KT632261
<i>Eucalyptus dissimulata</i>	Accepted		Brooker	Currency Creek s.n.	KT631650	KT631067	KT632833	KT632262
<i>Eucalyptus distans</i>	Accepted		Brooker, Boland & Kleinig	CANB 409167**	KT631651	KT631068	–	KT632263
<i>Eucalyptus distuberosa</i> subsp. <i>aerata</i>	Accepted		D.Nicolle	Currency Creek 3563	KT631652	KT631069	KT632834	–
<i>Eucalyptus diversicolor</i>	Accepted		F.Muell.	ANBG 7901541	KT631653	AF390493	KT632835	KT632264
<i>Eucalyptus diversifolia</i> subsp. <i>diversifolia</i>	Accepted		Bonpl.	GenBank	FJ494745	AF058483	–	–
<i>Eucalyptus dives</i>	Accepted		Schauer	ANBG 7809979	KT631654	AF058503	KT632836	KT632265
<i>Eucalyptus dolichocera</i>	Accepted		L.A.S.Johnson & K.D.Hill	Currency Creek 3525	KT631655	KT631070	KT632837	KT632266
<i>Eucalyptus dolichorhyncha</i>	Accepted		(Brooker) Brooker & Hopper	Currency Creek 152	KT631656	KT631071	KT632838	KT632267
<i>Eucalyptus dolorosa</i>	Accepted		Brooker & Hopper	ANBG 610751	KT631657	KT631072	KT632839	KT632268
<i>Eucalyptus dorotoxylon</i>	Accepted		F.Muell.	Currency Creek 178	KT631658	KT631073	KT632840	KT632269
<i>Eucalyptus drummondii</i> subsp. <i>drummondii</i>	Accepted		Benth.	Currency Creek 1156	KT631659	KT631074	KT632841	KT632270
<i>Eucalyptus dumosa</i>	Accepted		A.Cunn. ex Oxley	Currency Creek 981	KT631660	KT631075	KT632842	KT632271
<i>Eucalyptus dundasii*</i>	Accepted		Maiden	Currency Creek 2175	KT631661	AF390501	KT632843	KT632272
<i>Eucalyptus dumii</i>	Accepted		Maiden	Currency Creek 1257	KT631662	AF390510	KT632844	KT632273
<i>Eucalyptus dura</i>	Accepted		L.A.S.Johnson & K.D.Hill	Currency Creek 689	KT631663	KT631076	–	–
<i>Eucalyptus dwyeri</i>	Accepted		Maiden & Blakely	ANBG 9406593	KT631664	KT631077	KT632846	KT632274
<i>Eucalyptus ebbanoensis</i> subsp. <i>ebbanoensis</i>	Accepted		Maiden	ANBG 9806509	KT631665	KT631078	KT632847	KT632275
<i>Eucalyptus educta</i>	Accepted		L.A.S.Johnson & K.D.Hill	CANB 461013**	KT631666	KT631079	KT632848	–
<i>Eucalyptus effusa</i> subsp. <i>effusa</i>	Accepted		Brooker	Currency Creek 3631	KT631667	KT631080	KT632849	KT632276
<i>Eucalyptus elaeophloia</i>	Accepted		Chappill, Crisp & Prober	Currency Creek 586	KT631668	KT631081	KT632850	–
<i>Eucalyptus elata</i>	Accepted		Dehnh.	ANBG 73059	KT631669	KT631082	KT632851	KT632277
<i>Eucalyptus elliptica</i>	Accepted		(Blakely & McKie) L.A.S.Johnson & K.D.Hill	ANBG 69616	KT631670	KT631083	KT632852	KT632278
<i>Eucalyptus erectifolia</i>	Accepted		Brooker & Hopper	CANB 794270**	KT631671	KT631084	KT632853	KT632279
<i>Eucalyptus eremicola</i> subsp. <i>eremicola</i>	Accepted		Boomsma	Currency Creek 1500	KT631672	KT631085	KT632854	KT632280
<i>Eucalyptus eremophila</i>	Accepted		(Diels) Maiden	CANB 794016**	KT631673	KT631086	KT632855	KT632281
<i>Eucalyptus erythrocorys</i>	Accepted		F.Muell.	ANBG 9806156	FJ654422	AF190365	KT632856	AF190382
<i>Eucalyptus erythronema</i> subsp. <i>erythronema</i>	Accepted		Turcz.	Currency Creek 3458	KT631674	KT631087	KT632857	KT632282
<i>Eucalyptus eudesmioides</i> subsp. <i>eudesmioides</i>	Accepted		F.Muell.	CANB 794073**	KT631675	KT631088	KT632858	KT632283
<i>Eucalyptus eugenioides</i>	Accepted		Sieber ex Spreng.	Currency Creek 1235	KT631676	KT631089	KT632859	KT632284
<i>Eucalyptus ewartiana</i>	Accepted		Maiden	Currency Creek 2721	KT631677	KT631090	KT632860	KT632285
<i>Eucalyptus exigua</i>	Accepted		Brooker & Hopper	Currency Creek 3676	KT631678	KT631091	–	KT632286
<i>Eucalyptus exilipes</i>	Accepted		Brooker & A.R.Bean	CANB 582959**	KT631679	–	–	KT632287
<i>Eucalyptus exilis</i>	Accepted		Brooker	ANBG 8004906	KT631680	FJ494715	KT632861	KT632288
<i>Eucalyptus extensa</i>	Accepted		L.A.S.Johnson & K.D.Hill	Currency Creek 3467	KT631681	KT631092	KT632862	–
<i>Eucalyptus extrica</i>	Accepted		D.Nicolle	CANB 632680**	–	FJ654392	–	FJ654343

Taxon	Status	Accepted name	Authority	Collection source	ETS accession	ITS accession	matK accession	psbA accession
<i>Eucalyptus falcata</i>	Accepted		Turcz.	CANB 630597**	KT631682	AF390506	KT632863	KT632289
<i>Eucalyptus famelica</i>	Accepted		Brooker & Hopper	Waite Arboretum 2440A	KT631683	KT631093	KT632864	KT632290
<i>Eucalyptus farinosa</i>	Accepted		K.D.Hill	CANB 738929**	–	–	KT632865	KT632291
<i>Eucalyptus fasciculosa</i>	Accepted		F.Muell.	Currency Creek 1716	KT631684	KT631094	KT632866	KT632292
<i>Eucalyptus fastigata</i>	Accepted		H.Deane & Maiden	ANBG 8603812	KT631685	KT631095	KT632867	KT632293
<i>Eucalyptus fergusonii</i> subsp. <i>fergusonii</i>	Accepted		R.T.Baker	Currency Creek 2918	KT631686	KT631096	KT632868	KT632294
<i>Eucalyptus fibrosa</i> subsp. <i>fibrosa</i>	Accepted		F.Muell.	Currency Creek 666	KT631687	KT631097	KT632869	KT632295
<i>Eucalyptus flindersii</i>	Accepted		Boomsma	Waite Arboretum 1837B	KT631688	KT631098	KT632870	KT632296
<i>Eucalyptus flocktoniae</i> subsp. <i>flocktoniae</i>	Accepted		(Maiden) Maiden	Currency Creek 1870	KT631689	KT631099	KT632871	KT632297
<i>Eucalyptus foecunda</i>	Accepted		Schauer	Currency Creek 1152	KT631690	KT631100	KT632872	KT632298
<i>Eucalyptus foliosa</i>	Accepted		L.A.S.Johnson & K.D.Hill	CANB 794339**	KT631691	KT631101	KT632873	KT632299
<i>Eucalyptus formanii</i>	Accepted		C.A.Gardner	Waite Arboretum 1655	KT631692	KT631102	KT632874	–
<i>Eucalyptus forrestiana</i>	Accepted		Diels	CANB 804508**	KT631693	KT631103	KT632875	KT632300
<i>Eucalyptus fraseri</i> subsp. <i>fraseri</i>	Accepted		(Brooker) Brooker	Currency Creek 3619	KT631694	KT631104	KT632876	KT632301
<i>Eucalyptus fraxinoides</i>	Accepted		H.Deane & Maiden	ANBG 751650	KT631695	–	KT632877	KT632302
<i>Eucalyptus frenchiana</i>	Accepted		D.Nicolle	Currency Creek 3660	KT631696	KT631105	KT632878	KT632303
<i>Eucalyptus froggattii</i>	Accepted		Blakely	Currency Creek 2583	KT631697	KT631106	KT632879	KT632304
<i>Eucalyptus fruticosa</i>	Accepted		Brooker	Currency Creek 3532	KT631698	KT631107	KT632880	KT632305
<i>Eucalyptus fulgens</i>	Accepted		Rule	ANBG 9707943	KT631699	KT631108	KT632881	KT632306
<i>Eucalyptus fusiformis</i>	Accepted		Boland & Kleinig	ANBG 8604718	KT631700	KT631109	–	KT632307
<i>Eucalyptus gamophylla</i>	Accepted		F.Muell.	CANB 785577**	FJ654415	AF390469	KT632882	KT632308
<i>Eucalyptus gardneri</i> subsp. <i>gardneri</i>	Accepted		Maiden	Currency Creek 3434	KT631701	KT631110	KT632883	KT632309
<i>Eucalyptus georgei</i> subsp. <i>georgei</i>	Accepted		Brooker & Blaxell	Currency Creek 325	KT631702	KT631111	–	KT632310
<i>Eucalyptus gigantangion</i>	Accepted		L.A.S.Johnson & K.D.Hill	CANB 454615**	KT631703	FJ654413	–	KT632311
<i>Eucalyptus gillenii</i>	Accepted		Ewart & L.R.Kerr	Currency Creek 2689	KT631704	KT631112	KT632884	KT632312
<i>Eucalyptus gillii</i>	Accepted		Maiden	Currency Creek 2959	KT631705	KT631113	KT632885	KT632313
<i>Eucalyptus gittinsii</i> subsp. <i>gittinsii</i>	Accepted		Brooker & Blaxell	CANB 794094**	–	KT631114	KT632886	KT632314
<i>Eucalyptus glaucescens</i>	Accepted		Maiden & Blakely	Currency Creek 588	KT631706	KT631115	KT632887	KT632315
<i>Eucalyptus glaucina</i>	Accepted		(Blakely) L.A.S.Johnson	Currency Creek 2085	KT631707	AF390481	KT632888	KT632316
<i>Eucalyptus globoidea</i>	Accepted		Blakely	Currency Creek 1732	KT631708	KT631116	KT632889	KT632317
<i>Eucalyptus globulus</i> subsp. <i>globulus</i>	Accepted		Labill.	ANBG 85001816	KT631709	AF058463	KT632890	–
<i>Eucalyptus glomerosa</i>	Accepted		Brooker & Hopper	Currency Creek 1508	KT631710	KT631117	KT632891	KT632318
<i>Eucalyptus gomphocephala</i>	Accepted		A.Cunn. ex DC.	Currency Creek 1148	KT631711	KT631118	KT632892	KT632319
<i>Eucalyptus gongylocarpa</i>	Accepted		Blakely	CANB 804339**	KT631712	KT631119	KT632893	KT632320
<i>Eucalyptus goniantha</i> subsp. <i>goniantha</i>	Accepted		Turcz.	Currency Creek 1626	KT631713	KT631120	–	KT632321
<i>Eucalyptus goniocalyx</i> subsp. <i>goniocalyx</i>	Accepted		F.Muell. ex Miq.	Currency Creek 2952	KT631714	KT631121	KT632894	KT632322
<i>Eucalyptus goniocarpa</i>	Accepted		L.A.S.Johnson & K.D.Hill	Currency Creek 186	KT631715	KT631122	KT632895	KT632323
<i>Eucalyptus gracilis</i>	Accepted		F.Muell.	Currency Creek 444	KT631716	KT631123	KT632896	KT632324

Taxon	Status	Accepted name	Authority	Collection source	ETS accession	ITS accession	matK accession	psbA accession
<i>Eucalyptus grandis</i>	Accepted		W.Hill	GenBank	–	AF058475	HM347959	HM347959
<i>Eucalyptus granitica</i>	Accepted		L.A.S.Johnson & K.D.Hill	Mt Annan 831413	–	KT631124	KT632897	KT632325
<i>Eucalyptus gregoriensis</i>	Accepted		N.G.Walsh & Albr.	Currency Creek 2447	KT631717	–	KT632898	KT632326
<i>Eucalyptus gregsoniana</i>	Accepted		L.A.S.Johnson & Blaxell	Currency Creek 1756	KT631718	KT631125	KT632899	KT632327
<i>Eucalyptus griffithsii</i>	Accepted		Maiden	Currency Creek 3637	KT631719	KT631126	KT632900	KT632328
<i>Eucalyptus grisea</i>	Accepted		L.A.S.Johnson & K.D.Hill	Currency Creek 1271	KT631720	KT631127	KT632901	KT632329
<i>Eucalyptus grossa</i>	Accepted		F.Muell. ex Benth.	CANB 794307**	KT631721	KT631128	KT632902	KT632330
<i>Eucalyptus guilfoylei</i>	Accepted		Maiden	CANB 794246**	KT631722	KT631129	KT632903	KT632331
<i>Eucalyptus gunnii</i>	Accepted		Hook.f.	ANBG 656505	KT631723	KT631130	KT632904	–
<i>Eucalyptus gypsophila</i>	Accepted		Nicolle	Currency Creek 1550	KT631724	KT631131	KT632905	KT632332
<i>Eucalyptus haemastoma</i>	Accepted		Sm.	Mt Annan 20051000	KT631725	FJ494717	KT632906	KT632333
<i>Eucalyptus hallii</i>	Accepted		Brooker	GenBank	–	AF390512	–	–
<i>Eucalyptus halophila</i>	Accepted		D.J.Carr & S.G.M.Carr	CANB 794338**	KT631726	KT631132	KT632907	KT632334
<i>Eucalyptus hebetifolia</i>	Accepted		Brooker & Hopper	ANBG 467228	KT631727	KT631133	KT632908	–
<i>Eucalyptus herbertiana</i>	Accepted		Maiden	CANB 785524**	KT631728	KT631134	KT632909	KT632335
<i>Eucalyptus histophylla</i>	Accepted		Brooker & Hopper	Currency Creek 3661	KT631729	KT631135	KT632910	–
<i>Eucalyptus horistes</i>	Accepted		L.A.S.Johnson & K.D.Hill	Currency Creek 1169	KT631730	KT631136	KT632911	KT632336
<i>Eucalyptus houseana</i>	Accepted		W.Fitzg. ex Maiden	CANB 785535**	KT631731	KT631137	KT632912	KT632337
<i>Eucalyptus howittiana</i>	Accepted		F.Muell.	Currency Creek 2526	KT631732	KT631138	HQ287629	KT632338
<i>Eucalyptus hypolaena</i>	Accepted		L.A.S.Johnson & K.D.Hill	Currency Creek 2303	KT631733	KT631139	KT632913	KT632339
<i>Eucalyptus ignorabilis</i>	Accepted		L.A.S.Johnson & K.D.Hill	Currency Creek 1746	KT631734	KT631140	KT632914	KT632340
<i>Eucalyptus imlayensis</i>	Accepted		Crisp & Brooker	ANBG 782689	KT631735	KT631141	KT632915	–
<i>Eucalyptus impensa</i>	Accepted		Brooker & Hopper	Currency Creek 264	KT631736	KT631142	KT632916	KT632341
<i>Eucalyptus incerata</i>	Accepted		Brooker & Hopper	Currency Creek 4678	KT631737	–	KT632917	KT632342
<i>Eucalyptus incrassata</i>	Accepted		Labill.	Currency Creek 1638	KT631738	KT631143	KT632918	KT632343
<i>Eucalyptus indurata</i>	Accepted		Brooker & Hopper	Currency Creek 3584	KT631739	KT631144	KT632919	KT632344
<i>Eucalyptus infera</i>	Accepted		A.R.Bean	Currency Creek 1254	KT631740	KT631145	KT632920	KT632345
<i>Eucalyptus insularis</i>	Accepted		Brooker	Currency Creek 1637	KT631741	KT631146	KT632921	KT632346
<i>Eucalyptus interstans</i>	Accepted		L.A.S.Johnson & K.D.Hill	Currency Creek 667	KT631742	KT631147	KT632922	KT632347
<i>Eucalyptus intertexta</i>	Accepted		R.T.Baker	Currency Creek 423	KT631743	KT631148	KT632923	KT632348
<i>Eucalyptus jacksonii</i>	Accepted		Maiden	CANB 794245**	KT631744	AF390529	HQ287631	KT632349
<i>Eucalyptus jimberlanica</i>	Accepted		L.A.S.Johnson & K.D.Hill	Currency Creek 3647	KT631745	KT631149	KT632924	KT632350
<i>Eucalyptus johnsoniana</i>	Accepted		Brooker & Blaxell	CANB 794214**	KT631746	KT631150	KT632925	KT632351
<i>Eucalyptus jucunda</i>	Accepted		C.A.Gardner	CANB 794089**	KT631747	KT631151	KT632926	KT632352
<i>Eucalyptus jutsonii</i>	Accepted		Maiden	Currency Creek 458	KT631748	KT631152	KT632927	KT632353
<i>Eucalyptus kartzoffiana</i>	Accepted		L.A.S.Johnson & Blaxell	Currency Creek s.n.	KT631749	KT631153	KT632928	–
<i>Eucalyptus kessellii</i>	Accepted		Maiden & Blakely	Currency Creek 1101	KT631750	KT631154	KT632929	KT632354
<i>Eucalyptus kessellii</i> subsp. <i>kessellii</i>								
<i>Eucalyptus kingsmillii</i>	Accepted		(Maiden) Maiden & Blakely	Mt Annan 866008	KT631751	KT631155	KT632930	KT632355
<i>Eucalyptus kingsmillii</i> subsp. <i>kingsmillii</i>								
<i>Eucalyptus kitsoniana</i>	Accepted		Maiden	Currency Creek 4311	KT631752	EF694712	KT632931	KT632356
<i>Eucalyptus kochii</i>	Accepted		Maiden & Blakely	Currency Creek 2223	KT631753	KT631156	KT632932	KT632357
<i>Eucalyptus kochii</i> subsp. <i>kochii</i>								
<i>Eucalyptus kondininensis</i>	Accepted		Maiden & Blakely	Currency Creek 3424	KT631754	KT631157	KT632933	KT632358
<i>Eucalyptus koolpinensis</i>	Accepted		Brooker & Dunlop	CANB 454611**	–	KT631158	–	–
<i>Eucalyptus kruseana</i>	Accepted		F.Muell.	Currency Creek s.n.	KT631755	–	–	–
<i>Eucalyptus kumarlensis</i>	Accepted		Brooker	Currency Creek 141	KT631756	KT631159	KT632934	–

Taxon	Status	Accepted name	Authority	Collection source	ETS accession	ITS accession	matK accession	psbA accession
<i>Eucalyptus kybeanensis</i>	Accepted		Maiden & Cambage	Waite Arboretum 2469	KT631757	KT631160	KT632935	KT632359
<i>Eucalyptus lacrimans</i>	Accepted		L.A.S.Johnson & K.D.Hill	Currency Creek 590	KT631758	EF051495	KT632936	KT632360
<i>Eucalyptus laeliae</i>	Accepted		Podger & Chippend.	Currency Creek 1150	KT631759	KT631161	–	–
<i>Eucalyptus laevopinea</i>	Accepted		F.Muell. ex R.T.Baker	Currency Creek 649	KT631760	KT631162	KT632937	KT632361
<i>Eucalyptus lanepoolei</i>	Accepted		Maiden	Currency Creek 3514	KT631761	KT631163	KT632938	KT632362
<i>Eucalyptus langleyi</i>	Accepted		L.A.S.Johnson & Blaxell	ANBG 8801319	KT631762	KT631164	KT632939	KT632363
<i>Eucalyptus lansdowneana</i>	Accepted		F.Muell. & J.E.Br.	Currency Creek 57	KT631763	AF058476	KT632940	KT632364
<i>Eucalyptus largeana</i>	Accepted		Blakely & Beuzev.	CANB 470581**	–	KT631165	–	–
<i>Eucalyptus largiflorens</i>	Synonym	<i>Eucalyptus bicolor</i>	A.Cunn. ex Hook.	CANB 785604**	KT631764	KT631166	KT632941	KT632365
<i>Eucalyptus latens</i>	Accepted		Brooker	Currency Creek 1613	KT631765	KT631167	KT632942	KT632366
<i>Eucalyptus lateritica</i>	Accepted		Brooker & Hopper	CANB 794197**	KT631766	KT631168	KT632943	KT632367
<i>Eucalyptus latisinensis</i>	Accepted		K.D.Hill	Currency Creek 715	KT631767	AF390532	–	KT632368
<i>Eucalyptus lehmannii</i>	Accepted		(Schauer) Benth.	Currency Creek 294	KT631768	–	–	KT632369
<i>Eucalyptus leptocalyx</i> subsp. <i>leptocalyx</i>	Accepted		Blakely	Currency Creek 3592	KT631769	KT631169	–	KT632370
<i>Eucalyptus leptophleba</i>	Accepted		F.Muell.	CANB 597951**	KT631770	–	–	KT632371
<i>Eucalyptus leptophylla</i>	Synonym	<i>Eucalyptus foecunda</i>	Schauer	Currency Creek 3486	KT631771	KT631170	KT632944	KT632372
<i>Eucalyptus leptopoda</i> subsp. <i>leptopoda</i>	Accepted		Benth.	CANB 519232**	KT631772	KT631171	KT632945	–
<i>Eucalyptus lesouefii</i>	Accepted		Maiden	Currency Creek 3633	KT631773	KT631172	KT632946	KT632373
<i>Eucalyptus leucophloia</i> subsp. <i>euroa</i>	Accepted		Brooker	Currency Creek 2498	KT631774	KT631173	KT632947	KT632374
<i>Eucalyptus leucoxydon</i> subsp. <i>leucoxydon</i>	Accepted		F.Muell.	Currency Creek 3788	KT631775	KT631174	KT632948	KT632375
<i>Eucalyptus ligulata</i> subsp. <i>ligulata</i>	Accepted		Brooker	Currency Creek 175	KT631776	KT631175	KT632949	KT632376
<i>Eucalyptus ligustrina</i>	Accepted		A.Cunn. ex DC.	Currency Creek 624	KT631777	KT631176	KT632950	KT632377
<i>Eucalyptus limitaris</i>	Accepted		L.A.S.Johnson & K.D.Hill	CANB 785552**	KT631778	KT631177	KT632951	KT632378
<i>Eucalyptus lirata</i>	Accepted		W.Fitzg. ex Maiden	CANB 784082**	FJ654424	–	–	KT632379
<i>Eucalyptus litorea</i>	Accepted		Brooker & Hopper	Currency Creek 1094	KT631779	KT631178	KT632952	KT632380
<i>Eucalyptus livida</i>	Accepted		Brooker & Hopper	CANB 794326**	KT631780	KT631179	KT632953	KT632381
<i>Eucalyptus lockyeri</i>	Accepted		Blaxell & K.D.Hill	GenBank	–	AF390488	–	–
<i>Eucalyptus longicornis</i>	Accepted		(F.Muell.) Maiden	Currency Creek 2241	KT631781	KT631180	KT632954	KT632382
<i>Eucalyptus longifolia</i> *	Accepted		Link	GenBank	–	EF488224	–	–
<i>Eucalyptus longirostrata</i>	Accepted		(Blakely) L.A.S.Johnson & K.D.Hill	Currency Creek 2112	KT631782	KT631181	KT632955	KT632383
<i>Eucalyptus loxophleba</i> subsp. <i>loxophleba</i>	Accepted		Benth.	ANBG 9205090	KT631783	KT631182	KT632956	KT632384
<i>Eucalyptus lucasii</i>	Accepted		Blakely	CANB 804340**	KT631784	KT631183	KT632957	KT632385
<i>Eucalyptus lucens</i>	Accepted		Brooker & Dunlop	Currency Creek 1353	KT631785	KT631184	KT632958	–
<i>Eucalyptus luculenta</i>	Accepted		L.A.S.Johnson & K.D.Hill	Currency Creek 3618	KT631786	KT631185	KT632959	KT632386
<i>Eucalyptus luehmanniana</i>	Accepted		F.Muell.	ANBG 8300316	KT631787	KT631186	KT632960	KT632387
<i>Eucalyptus macarthurii</i>	Accepted		H.Deane & Maiden	ANBG s.n.	KT631788	KT631187	KT632961	–
<i>Eucalyptus mackintii</i>	Accepted		Kottak	Currency Creek 1737	KT631789	KT631188	KT632962	KT632388
<i>Eucalyptus macrandra</i>	Accepted		F.Muell. ex Benth.	Currency Creek 1887	KT631790	KT631189	KT632963	KT632389
<i>Eucalyptus macrocarpa</i> subsp. <i>macrocarpa</i>	Accepted		Hook.	Currency Creek 3428	KT631791	KT631190	KT632964	KT632390

Taxon	Status	Accepted name	Authority	Collection source	ETS accession	ITS accession	<i>matK</i> accession	<i>psbA</i> accession
<i>Eucalyptus macrorhyncha</i> subsp. <i>macrorhyncha</i>	Accepted		F.Muell. ex Benth.	Currency Creek 737	KT631792	KT631191	KT632965	KT632391
<i>Eucalyptus magnificata</i>	Accepted		L.A.S.Johnson & K.D.Hill	Currency Creek 2945	KT631793	KT631192	KT632966	KT632392
<i>Eucalyptus major</i>	Accepted		(Maiden) Blakely	Currency Creek 2107	KT631794	KT631193	KT632967	KT632393
<i>Eucalyptus malacoxylon</i>	Accepted		Blakely	Currency Creek 1368	KT631795	KT631194	KT632968	–
<i>Eucalyptus mannensis</i> subsp. <i>vespertina</i>	Accepted		Boomsma	Currency Creek 1171	KT631796	KT631195	KT632969	KT632394
<i>Eucalyptus mannifera</i> subsp. <i>mannifera</i>	Accepted		Mudie	Currency Creek 2066	KT631797	KT631196	KT632970	–
<i>Eucalyptus marginata</i> subsp. <i>marginata</i>	Accepted		Donn ex Sm.	CANB 794234**	FJ494752	AF390530	KT632971	KT632395
<i>Eucalyptus mckieana</i>	Accepted		Blakely	Currency Creek 659	KT631798	KT631197	KT632972	KT632396
<i>Eucalyptus mcquoidii</i>	Accepted		Brooker & Hopper	Currency Creek 3569	KT631799	KT631198	–	KT632397
<i>Eucalyptus medialis</i>	Accepted		Brooker & Hopper	Waite Arboretum 2471	KT631800	KT631199	KT632973	KT632398
<i>Eucalyptus megacarpa</i>	Accepted		F.Muell.	CANB 804457**	KT631801	KT631200	KT632974	KT632399
<i>Eucalyptus megacornuta</i>	Accepted		C.A.Gardner	Currency Creek 3578	KT631802	KT631201	KT632975	KT632400
<i>Eucalyptus melanoleuca</i>	Accepted		S.T.Blake	Currency Creek 2111	KT631803	KT631202	KT632976	KT632401
<i>Eucalyptus melanophitra</i>	Accepted		Brooker & Hopper	Currency Creek 211	KT631804	KT631203	–	KT632402
<i>Eucalyptus melanophloia</i> subsp. <i>melanophloia</i>	Accepted		F.Muell.	Currency Creek 690	KT631805	KT631204	–	–
<i>Eucalyptus melanoxydon</i> *	Accepted		Maiden	Currency Creek 2552	KT631806	–	KT632977	KT632403
<i>Eucalyptus melliodora</i>	Accepted		A.Cunn. ex Schauer	ANBG 662272	KT631807	KT631205	KT632978	KT632404
<i>Eucalyptus merrickiae</i>	Accepted		Maiden & Blakely	CANB 794336**	KT631808	KT631206	KT632979	KT632405
<i>Eucalyptus michaeliana</i>	Accepted		Blakely	Currency Creek 650	–	AF390484	KT632980	–
<i>Eucalyptus micranthera</i>	Accepted		F.Muell. ex Benth.	Currency Creek 1090	KT631809	–	–	KT632406
<i>Eucalyptus microcarpa</i>	Accepted		(Maiden) Maiden	Currency Creek 2895	KT631810	KT631207	KT632981	–
<i>Eucalyptus microcorys</i>	Accepted		F.Muell.	ANBG 491154	KT631811	AF390516	KT632982	–
<i>Eucalyptus microneura</i> *	Accepted		Maiden & Blakely	ANBG 8603418	KT631812	KT631208	KT632983	KT632407
<i>Eucalyptus microschemata</i>	Accepted		Brooker & Hopper	CANB 635056**	–	–	KT632984	–
<i>Eucalyptus microtheca</i>	Accepted		F.Muell.	CANB 785484**	KT631813	AF390515	KT632985	–
<i>Eucalyptus mimica</i> subsp. <i>mimica</i>	Accepted		Brooker & Hopper	Currency Creek 188	KT631814	KT631209	KT632986	KT632408
<i>Eucalyptus miniata</i>	Accepted		A.Cunn. ex Schauer	CANB 785476**	KT631815	KT631210	KT632987	KT632409
<i>Eucalyptus minigwalica</i>	MS		D.Nicolle	Currency Creek 522	KT631816	KT631211	KT632988	KT632410
<i>Eucalyptus minmiritchi</i>	Accepted		D.Nicolle	Currency Creek 1354	KT631817	KT631212	KT632989	KT632411
<i>Eucalyptus misella</i>	Accepted		L.A.S.Johnson & K.D.Hill	CANB 794329**	KT631818	KT631213	KT632990	KT632412
<i>Eucalyptus mitchelliana</i>	Accepted		Cabbage	Currency Creek 574	KT631819	FJ494720	KT632991	KT632413
<i>Eucalyptus moderata</i>	Accepted		L.A.S.Johnson & K.D.Hill	Currency Creek 1661	KT631820	KT631214	KT632992	KT632414
<i>Eucalyptus moluccana</i>	Accepted		Wall. ex Roxb.	ANBG 50761	KT631821	KT631215	KT632993	KT632415
<i>Eucalyptus mooreana</i>	Accepted		Maiden	CANB 750218**	–	KT631216	–	–
<i>Eucalyptus moorei</i> subsp. <i>moorei</i>	Accepted		Maiden & Cabbage	ANBG 9600762	KT631822	KT631217	KT632994	KT632416
<i>Eucalyptus morrisbyi</i>	Accepted		Brett	Currency Creek 1983	KT631823	HM596054	KT632995	KT632417
<i>Eucalyptus morrisii</i>	Accepted		R.T.Baker	Currency Creek 730	KT631824	KT631218	KT632996	KT632418
<i>Eucalyptus muelleriana</i>	Accepted		Howitt	Currency Creek 1753	KT631825	KT631219	KT632997	KT632419
<i>Eucalyptus multicaulis</i>	Accepted		Blakely	ANBG 761635	KT631826	KT631220	KT632998	–
<i>Eucalyptus myriadena</i>	Accepted		Brooker	Currency Creek 321	KT631827	KT631221	KT632999	KT632420
<i>Eucalyptus nanderwarica</i>	Accepted		L.A.S.Johnson & K.D.Hill	ANBG 9707924	KT631828	KT631222	KT633000	KT632421

Taxon	Status	Accepted name	Authority	Collection source	ETS accession	ITS accession	matK accession	psbA accession
<i>Eucalyptus neglecta</i>	Accepted		Maiden	ANBG 72027	KT631829	KT631223	KT633001	–
<i>Eucalyptus nerthicola</i>	Accepted		D.Nicolle	Currency Creek 3608	KT631830	KT631224	KT633002	KT632422
<i>Eucalyptus neutra</i>	Accepted		D.Nicolle	Currency Creek 1855	KT631831	–	KT633003	KT632423
<i>Eucalyptus newbeyi</i>	Accepted		D.J.Carr & S.G.M.Carr	Currency Creek 212	KT631832	KT631225	–	–
<i>Eucalyptus nicholii</i>	Accepted		Maiden & Blakely	Currency Creek 651	KT631833	KT631226	KT633004	KT632424
<i>Eucalyptus nitens</i>	Accepted		(H.Deane & Maiden) Maiden	ANBG 651034	KT631834	KT631227	KT633005	–
<i>Eucalyptus nitida</i>	Synonym	<i>Eucalyptus ambigua</i>	A.Cunn. ex DC.	Currency Creek 1964	KT631835	KT631228	KT633006	KT632425
<i>Eucalyptus nobilis</i>	Accepted		L.A.S.Johnson & K.D.Hill	Currency Creek 753	KT631836	KT631229	KT633007	–
<i>Eucalyptus normantonensis</i>	Accepted		Maiden & Cambage	Currency Creek 1202	KT631837	–	KT633008	–
<i>Eucalyptus nortonii</i>	Accepted		(Blakely) L.A.S.Johnson	Currency Creek 2951	KT631838	KT631230	KT633009	–
<i>Eucalyptus nova-anglica</i>	Accepted		H.Deane & Maiden	Currency Creek 656	KT631839	KT631231	KT633010	KT632426
<i>Eucalyptus nudicaulis</i>	Accepted		A.R.Bean	Currency Creek 4184	KT631840	KT631232	KT633011	KT632427
<i>Eucalyptus nutans</i>	Accepted		F.Muell.	Currency Creek 4800	KT631841	KT631233	KT633012	KT632428
<i>Eucalyptus obconica</i>	Accepted		Brooker & Kleinig	CANB 644802**	KT631842	KT631234	KT633013	–
<i>Eucalyptus obesa</i>	Accepted		Brooker & Hopper	Currency Creek 3724	KT631843	–	–	–
<i>Eucalyptus obliqua</i>	Accepted		L'Hér.	Royal Canberra Golf Club AHT21	KT631844	AF058484	KT633014	KT632429
<i>Eucalyptus oblonga</i>	Accepted		A.Cunn. ex DC.	Currency Creek 622	–	–	–	KT632430
<i>Eucalyptus obtusiflora</i>	Accepted		A.Cunn. ex DC.	CANB 794053**	KT631845	KT631235	KT633015	KT632431
<i>Eucalyptus occidentalis</i>	Accepted		Endl.	Currency Creek 3556	KT631846	KT631236	KT633016	–
<i>Eucalyptus ochrophloia</i>	Accepted		F.Muell.	CANB 785600**	KT631847	KT631237	–	KT632432
<i>Eucalyptus odontocarpa</i>	Accepted		F.Muell.	CANB 785573**	FJ654418	FJ654394	KT633017	FJ654354
<i>Eucalyptus oldfieldii</i>	Accepted		F.Muell.	CANB 794068**	KT631848	KT631238	KT633018	KT632433
<i>Eucalyptus oleosa</i> subsp. <i>oleosa</i>	Accepted		F.Muell. ex Miq.	Currency Creek 2163	KT631849	KT631239	KT633019	KT632434
<i>Eucalyptus olida</i>	Accepted		L.A.S.Johnson & K.D.Hill	Currency Creek 661	KT631850	KT631240	KT633020	KT632435
<i>Eucalyptus oligantha</i>	Accepted		Schauer	CANB 785536**	KT631851	KT631241	KT633021	–
<i>Eucalyptus olivina</i>	Accepted		Brooker & Hopper	Currency Creek 3670	KT631852	KT631242	KT633022	KT632436
<i>Eucalyptus olsanii</i>	Accepted		L.A.S.Johnson & Blaxell	ANBG 762144	KT631853	KT631243	KT633023	KT632437
<i>Eucalyptus ophitica</i>	Accepted		L.A.S.Johnson & K.D.Hill	Currency Creek 2099	KT631854	–	–	–
<i>Eucalyptus optima</i>	Accepted		L.A.S.Johnson & K.D.Hill	Currency Creek 2154	KT631855	KT631244	KT633024	KT632438
<i>Eucalyptus oraria</i>	Accepted		L.A.S.Johnson	Currency Creek 3527	KT631856	KT631245	KT633025	KT632439
<i>Eucalyptus orbifolia</i>	Accepted		F.Muell.	Currency Creek 2774	KT631857	KT631246	KT633026	KT632440
<i>Eucalyptus oreades</i>	Accepted		F.Muell. ex R.T.Baker	Currency Creek 628	KT631858	KT631247	KT633027	KT632441
<i>Eucalyptus orgadophila</i>	Accepted		Maiden & Blakely	Waite Arboretum 90	KT631859	KT631248	KT633028	KT632442
<i>Eucalyptus ornata</i>	Accepted		Crisp	Currency Creek 243	KT631860	–	KT633029	KT632443
<i>Eucalyptus orthostemon</i>	Accepted		D.Nicolle & Brooker	Currency Creek 3426	KT631861	KT631249	KT633030	KT632444
<i>Eucalyptus ovata</i> var. <i>ovata</i>	Accepted		Labill.	ANBG 475702	KT631862	KT631250	KT633031	KT632445
<i>Eucalyptus ovularis</i>	Accepted		Maiden & Blakely	Currency Creek 1107	KT631863	KT631251	KT633032	KT632446
<i>Eucalyptus oxymitra</i>	Accepted		Blakely	Currency Creek 1704	KT631864	–	KT633033	KT632447
<i>Eucalyptus pachycalyx</i> subsp. <i>pachycalyx</i>	Accepted		Maiden & Blakely	Currency Creek 1307	KT631865	KT631252	KT633034	KT632448
<i>Eucalyptus pachyloma</i>	Accepted		Benth.	Currency Creek 3735	KT631866	KT631253	KT633035	KT632449
<i>Eucalyptus pachyphylla</i>	Accepted		F.Muell.	ANBG 8503938	KT631867	AF390473	KT633036	KT632450
<i>Eucalyptus paedoglauca</i>	Accepted		L.A.S.Johnson & Blaxell	Currency Creek 1298	KT631868	KT631254	KT633037	KT632451
<i>Eucalyptus paliformis</i>	Accepted		L.A.S.Johnson & Blaxell	CANB 460597**	KT631869	EF051497	KT633038	KT632452
<i>Eucalyptus paludicola</i>	Accepted		Nicolle	ANBG 496820	KT631870	EF488227	KT633039	–
<i>Eucalyptus panda</i>	Accepted		S.T.Blake	Currency Creek 683	KT631871	KT631255	KT633040	KT632453
<i>Eucalyptus paniculata</i>	Accepted		Sm.	Currency Creek 2903	KT631872	KT631256	KT633041	KT632454

Taxon	Status	Accepted name	Authority	Collection source	ETS accession	ITS accession	matK accession	psbA accession
<i>Eucalyptus parramattensis</i> subsp. <i>parramattensis</i>	Accepted		C.C.Hall	Currency Creek 1763	KT631873	KT631257	KT633042	KT632455
<i>Eucalyptus parvula</i>	Accepted		L.A.S.Johnson & K.D.Hill	Currency Creek 591	KT631874	KT631258	KT633043	KT632456
<i>Eucalyptus patellaris</i>	Accepted		F.Muell.	CANB 558538**	KT631875	KT631259	–	KT632457
<i>Eucalyptus patens</i>	Accepted		Benth.	ANBG 55807	KT631876	FJ494724	KT633044	KT632458
<i>Eucalyptus pauciflora</i> subsp. <i>pauciflora</i>	Accepted		Sieber ex Spreng.	ANBG 9303293	KT631877	KT631260	KT633045	KT632459
<i>Eucalyptus pellita</i>	Accepted		F.Muell.	ANBG 8413520	KT631878	KT631261	KT633046	KT632460
<i>Eucalyptus pendens</i>	Accepted		Brooker	CANB 794222**	KT631879	–	KT633047	KT632461
<i>Eucalyptus perangusta</i>	Accepted		Brooker	Currency Creek 3712	KT631880	KT631262	KT633048	KT632462
<i>Eucalyptus percostata</i>	Accepted		Brooker & P.J.Lang	Currency Creek 1603	KT631881	KT631263	KT633049	KT632463
<i>Eucalyptus perriniana</i>	Accepted		F.Muell. ex Rodway	Currency Creek 584	KT631882	KT631264	AM489985	KT632464
<i>Eucalyptus persistens</i> subsp. <i>tardecidens</i>	Synonym	<i>Eucalyptus tardecidens</i>	(L.A.S.Johnson & K.D.Hill)	Waite Arboretum 1954B	KT631883	KT631265	KT633050	KT632465
<i>Eucalyptus petiolaris</i>	Synonym	<i>Eucalyptus leucoxylo</i> subsp. <i>petiolaris</i>	A.R.Bean Boland	ANBG 8317297	KT631884	KT631266	KT633051	KT632466
<i>Eucalyptus petraea</i>	Accepted		D.J.Carr & S.G.M.Carr	Currency Creek 3766	KT631885	KT631267	KT633052	KT632467
<i>Eucalyptus petrensis</i>	Accepted		Brooker & Hopper	ANBG 456210	KT631886	KT631268	KT633053	KT632468
<i>Eucalyptus phaenophylla</i> subsp. <i>phaenophylla</i>	Accepted		Brooker & Hopper	CANB 794282**	KT631887	KT631269	KT633054	–
<i>Eucalyptus phenax</i> subsp. <i>phenax</i>	Accepted		Brooker & Slee	Currency Creek 929	KT631888	KT631270	KT633055	KT632469
<i>Eucalyptus phoenicea</i>	Accepted		F.Muell.	CANB 785492**	KT631889	FJ654391	KT633056	KT632470
<i>Eucalyptus pilbarensis</i> *	Accepted		Brooker & Edgewood	CANB 804362**	KT631890	KT631271	KT633057	KT632471
<i>Eucalyptus pileata</i>	Accepted		Blakely	Currency Creek 3644	KT631891	KT631272	KT633058	KT632472
<i>Eucalyptus pilligaensis</i>	Synonym	<i>Eucalyptus woollisiana</i>	F.Muell. ex R.T.Baker	Currency Creek 681	KT631892	–	KT633059	–
<i>Eucalyptus pilularis</i>	Accepted		Sm.	Currency Creek 644	KT631893	KT631273	KT633060	KT632473
<i>Eucalyptus pimpiniana</i>	Accepted		Maiden	Currency Creek 2738	KT631894	KT631274	KT633061	KT632474
<i>Eucalyptus piperita</i> subsp. <i>piperita</i>	Accepted		Sm.	ANBG 8411654	KT631895	AF058485	–	KT632475
<i>Eucalyptus placita</i>	Accepted		L.A.S.Johnson & K.D.Hill	Waite Arboretum 1526	KT631896	KT631275	KT633062	KT632476
<i>Eucalyptus planchoniana</i>	Accepted		F.Muell.	GenBank	FJ494761	FJ494725	–	–
<i>Eucalyptus platycorys</i> subsp. <i>platycorys</i>	Accepted		Maiden & Blakely	Currency Creek 3627	KT631897	KT631276	KT633063	KT632477
<i>Eucalyptus platydisca</i>	Accepted		D.Nicoll & Brooker	CANB 638520**	KT631898	KT631277	KT633064	KT632478
<i>Eucalyptus platyphylla</i>	Accepted		F.Muell.	GenBank	–	AF390486	–	–
<i>Eucalyptus plauta</i>	Synonym	<i>Eucalyptus dissimulata</i> subsp. <i>plauta</i>	L.A.S.Johnson & K.D.Hill	Currency Creek 3613	KT631899	KT631278	KT633065	KT632479
<i>Eucalyptus pleurocarpa</i>	Synonym	<i>Eucalyptus tetragona</i>	(R.Br.) F.Muell.	Currency Creek 3557	KT631900	FJ654393	–	FJ654349
<i>Eucalyptus pluricaulis</i> subsp. <i>pluricaulis</i>	Accepted		Brooker & Hopper	Currency Creek 1662	KT631901	–	KT633066	–
<i>Eucalyptus polita</i>	Accepted		Brooker & Hopper	Currency Creek 3449	KT631902	KT631279	KT633067	KT632480
<i>Eucalyptus polyanthemus</i> subsp. <i>polyanthemus</i>	Accepted		Schauer	Currency Creek 2899	KT631903	KT631280	KT633068	KT632481
<i>Eucalyptus polybractea</i>	Accepted		F.Muell. ex R.T.Baker	Currency Creek 736	KT631904	KT631281	KT633069	KT632482
<i>Eucalyptus populnea</i>	Accepted		F.Muell.	CANB 785598**	KT631905	KT631282	KT633070	KT632483
<i>Eucalyptus porosa</i>	Accepted		Miq.	CANB 786047**	KT631906	KT631283	KT633071	KT632484
<i>Eucalyptus praetermissa</i>	Accepted		Brooker & Hopper	CANB 610680**	KT631907	KT631284	KT633072	KT632485

Taxon	Status	Accepted name	Authority	Collection source	ETS accession	ITS accession	<i>matK</i> accession	<i>psbA</i> accession
<i>Eucalyptus prava</i>	Accepted		L.A.S.Johnson & K.D.Hill	Currency Creek 671	KT631908	KT631285	KT633073	KT632486
<i>Eucalyptus preissiana</i> subsp. <i>preissiana</i>	Accepted		Schauer	Currency Creek 3762	KT631909	KT631286	–	KT632487
<i>Eucalyptus prolixa</i>	Accepted		D.Nicolle	CANB 536396**	KT631910	–	–	–
<i>Eucalyptus prominens</i>	Accepted		Brooker	Currency Creek 1181	KT631911	KT631287	KT633074	KT632488
<i>Eucalyptus propinqua</i>	Accepted		H.Deane & Maiden	Currency Creek 1239	KT631912	KT631288	KT633075	KT632489
<i>Eucalyptus protensa</i>	Accepted		L.A.S.Johnson & K.D.Hill	Currency Creek 3641	KT631913	KT631289	KT633076	KT632490
<i>Eucalyptus proxima</i>	Accepted		D.Nicolle & Brooker	Currency Creek 3571	KT631914	KT631290	KT633077	KT632491
<i>Eucalyptus pruiniramis</i>	Accepted		L.A.S.Johnson & K.D.Hill	GenBank	KT631915	KT631291	KT633078	KT632492
<i>Eucalyptus pruinosa</i> subsp. <i>pruinosa</i>	Accepted		Schauer	Mt Annan 841760	–	KT631292	KT633079	KT632493
<i>Eucalyptus pterocarpa</i>	Accepted		C.A.Gardner ex P.J.Lang	Currency Creek 3656	KT631916	KT631293	KT633080	KT632494
<i>Eucalyptus pulchella</i>	Accepted		Desf.	Currency Creek 2984	KT631917	AF058487	KT633081	KT632495
<i>Eucalyptus pulverulenta</i>	Accepted		Sims	Currency Creek 1226	KT631918	KT631294	KT633082	KT632496
<i>Eucalyptus pumila</i>	Accepted		Cabbage	Currency Creek 636	KT631919	EF488232	–	–
<i>Eucalyptus purpurata</i>	Accepted		D.Nicolle	Currency Creek 3579	KT631920	KT631295	KT633083	KT632497
<i>Eucalyptus pyriformis</i>	Accepted		Turcz.	Currency Creek 1660	KT631921	–	KT633084	KT632498
<i>Eucalyptus pyrocarpa</i>	Accepted		L.A.S.Johnson & Blaxell	ANBG 630205	KT631922	KT631296	KT633085	KT632499
<i>Eucalyptus quadrangulata</i>	Accepted		H.Deane & Maiden	Currency Creek 618	KT631923	KT631297	KT633086	–
<i>Eucalyptus quadrans</i>	Accepted		Brooker & Hopper	Currency Creek 1099	KT631924	KT631298	KT633087	KT632500
<i>Eucalyptus quadricostata</i>	Accepted		Brooker	ANBG 8603516	KT631925	KT631299	KT633088	KT632501
<i>Eucalyptus quaerenda</i>	Accepted		(L.A.S.Johnson & K.D.Hill) Byrne	CANB 794294**	KT631926	KT631300	KT633089	KT632502
<i>Eucalyptus quinniorum</i>	Accepted		J.T.Hunter & J.J.Bruhl	ANBG 9707932	KT631927	KT631301	KT633090	KT632503
<i>Eucalyptus racemosa</i>	Accepted		Cav.	ANBG 732766	KT631928	KT631302	KT633091	KT632504
<i>Eucalyptus radiata</i> subsp. <i>radiata</i>	Accepted		A.Cunn. ex DC.	Currency Creek 602	KT631929	KT631303	KT633092	KT632505
<i>Eucalyptus ralla</i>	Accepted		L.A.S.Johnson & K.D.Hill	Currency Creek 614	KT631930	KT631304	KT633093	KT632506
<i>Eucalyptus rameliana</i>	Accepted		F.Muell.	Currency Creek 543	KT631931	KT631305	KT633094	–
<i>Eucalyptus raveretiana</i>	Accepted		F.Muell.	Currency Creek 1297	KT631932	EF694715	KT633095	KT632507
<i>Eucalyptus ravida</i>	Accepted		L.A.S.Johnson & K.D.Hill	Currency Creek 2781	KT631933	KT631306	KT633096	KT632508
<i>Eucalyptus recta</i>	Accepted		L.A.S.Johnson & K.D.Hill	Currency Creek s.n.	KT631934	KT631307	KT633097	KT632509
<i>Eucalyptus recurva</i>	Accepted		Crisp	ANBG s.n.	KT631935	KT631308	KT633098	–
<i>Eucalyptus redunca</i>	Accepted		Schauer	Currency Creek 221	KT631936	KT631309	KT633099	KT632510
<i>Eucalyptus regnans</i>	Accepted		F.Muell.	ANBG 8501815	KT631937	AF058488	KT633100	KT632511
<i>Eucalyptus remota</i>	Accepted		Blakely	ANBG 9807783	KT631938	KT631310	KT633101	KT632512
<i>Eucalyptus resinifera</i> subsp. <i>resinifera</i>	Accepted		Sm.	Currency Creek 2908	KT631939	KT631311	KT633102	KT632513
<i>Eucalyptus retinens</i>	Accepted		L.A.S.Johnson & K.D.Hill	Currency Creek 648	KT631940	KT631312	KT633103	KT632514
<i>Eucalyptus retusa</i>	Accepted		D.Nicolle, M.E.French & McQuoid	Currency Creek 4801	KT631941	KT631313	–	–
<i>Eucalyptus rhodantha</i>	Accepted		Blakely & H.Steedman	Currency Creek 282	KT631942	KT631314	KT633104	KT632515
<i>Eucalyptus rhombica</i>	Accepted		A.R.Bean & Brooker	Currency Creek 2104	KT631943	KT631315	–	KT632516
<i>Eucalyptus rhomboidea</i>	Accepted		Hopper & D.Nicolle	Currency Creek 2272	KT631944	KT631316	KT633106	KT632517
<i>Eucalyptus rigens</i>	Accepted		Brooker & Hopper	Currency Creek 3595	KT631945	KT631317	KT633107	KT632518
<i>Eucalyptus rigidula</i>	Accepted		Cabbage & Blakely	Currency Creek 244	KT631946	KT631318	KT633108	KT632519
<i>Eucalyptus risdonii</i>	Accepted		Hook.f.	Currency Creek 1982	KT631947	AF058493	KT633109	KT632520
<i>Eucalyptus rodwayi</i>	Accepted		R.T.Baker & H.G.Sm.	ANBG 62705	KT631948	KT631319	KT633110	KT632521

Taxon	Status	Accepted name	Authority	Collection source	ETS accession	ITS accession	matK accession	psbA accession
<i>Eucalyptus rosacea</i>	Accepted		L.A.S.Johnson & K.D.Hill	Currency Creek 518	KT631949	KT631320	KT633111	KT632522
<i>Eucalyptus roycei</i>	Accepted		S.G.M.Carr, D.J.Carr & A.S.George	Currency Creek 1175	KT631950	KT631321	KT633112	KT632523
<i>Eucalyptus rubida</i> subsp. <i>rubida</i>	Accepted		H.Deane & Maiden	ANBG 732895	KT631951	HM596064	KT633113	KT632524
<i>Eucalyptus rubiginosa</i>	Accepted		Brooker	Currency Creek 2114	KT631952	AF390526	–	KT632525
<i>Eucalyptus rudderi</i>	Accepted		Maiden	Currency Creek 2082	KT631953	KT631322	KT633114	KT632526
<i>Eucalyptus rudis</i>	Accepted		Endl.	Currency Creek 1146	KT631954	KT631323	KT633115	KT632527
<i>Eucalyptus rugosa</i>	Accepted		R.Br. ex Blakely	Currency Creek 3179	KT631955	KT631324	KT633116	KT632528
<i>Eucalyptus rugulata</i>	Accepted		D.Nicolle	Currency Creek 3671	KT631956	–	–	KT632529
<i>Eucalyptus rummeryi</i>	Accepted		Maiden	Currency Creek 1245	KT631957	–	–	KT632530
<i>Eucalyptus salicola</i>	Accepted		Brooker	Currency Creek 3493	KT631958	KT631325	KT633118	KT632531
<i>Eucalyptus saligna</i>	Accepted		Sm.	Currency Creek 2924	KT631959	KT631326	KT633119	KT632532
<i>Eucalyptus salmonophloia</i>	Accepted		F.Muell.	CANB 564460**	KT631960	AF390509	KT633120	KT632533
<i>Eucalyptus salubris</i>	Accepted		F.Muell.	Currency Creek 3496	KT631961	KT631327	KT633121	KT632534
<i>Eucalyptus sargentii</i> subsp. <i>sargentii</i>	Accepted		Maiden	Currency Creek 2229	KT631962	KT631328	KT633122	KT632535
<i>Eucalyptus saxatilis</i>	Accepted		J.B.Kirp. & Brooker	ANBG 7906246	KT631963	KT631329	KT633123	–
<i>Eucalyptus scias</i> subsp. <i>scias</i>	Accepted		L.A.S.Johnson & K.D.Hill	Currency Creek 2911	KT631964	KT631330	–	KT632536
<i>Eucalyptus scoparia</i>	Accepted		Maiden	ANBG 501278	KT631965	KT631331	KT633124	KT632537
<i>Eucalyptus scopulorum</i>	Accepted		K.D.Hill	Currency Creek 2927	KT631966	KT631332	KT633125	KT632538
<i>Eucalyptus scyphocalyx</i>	Accepted		(Benth.) Maiden & Blakely	Waite Arboretum 1940A	KT631967	KT631333	KT633126	KT632539
<i>Eucalyptus seeana</i>	Accepted		Maiden	Currency Creek 2089	KT631968	KT631334	KT633127	KT632540
<i>Eucalyptus semota</i>	Accepted		Macph. & Grayling	Currency Creek 2193	KT631969	–	KT633128	–
<i>Eucalyptus sepulcralis</i>	Accepted		F.Muell.	CANB 378343**	KT631970	EF051499	KT633129	KT632541
<i>Eucalyptus serraensis</i>	Accepted		Ladiges & Whiffin	CANB 786029**	KT631971	KT631335	KT633130	KT632542
<i>Eucalyptus sessilis</i>	Accepted		(Maiden) Blakely	Currency Creek 1352	KT631972	KT631336	KT633131	KT632543
<i>Eucalyptus sicilifolia</i>	Accepted		L.A.S.Johnson & K.D.Hill	ANBG 8603421	KT631973	KT631337	KT633132	KT632544
<i>Eucalyptus siderophloia</i>	Accepted		Benth.	ANBG 7906137	KT631974	KT631338	KT633133	–
<i>Eucalyptus sideroxyylon</i>	Accepted		A.Cunn. ex Woolls	Currency Creek 674	KT631975	KT631339	KT633134	KT632545
<i>Eucalyptus sieberi</i>	Accepted		L.A.S.Johnson	ANBG 8411661	KT631976	AF058495	KT633135	KT632546
<i>Eucalyptus similis</i>	Accepted		Maiden	GenBank	–	FJ654409	–	FJ654359
<i>Eucalyptus singularis</i>	Accepted		L.A.S.Johnson & D.F.Blaxell	Waite Arboretum 2368	KT631977	KT631340	KT633136	KT632547
<i>Eucalyptus smithii</i>	Accepted		F.Muell. ex R.T.Baker	Currency Creek 598	KT631978	KT631341	KT633137	KT632548
<i>Eucalyptus socialis</i> subsp. <i>socialis</i>	Accepted		F.Muell. ex Miq.	Currency Creek 1804	KT631979	KT631342	KT633138	KT632549
<i>Eucalyptus sparsa</i>	Accepted		Boomsma	Waite Arboretum 1558	KT631980	KT631343	KT633139	KT632550
<i>Eucalyptus sparsifolia</i>	Synonym	<i>Eucalyptus oblonga</i>	A.Cunn. ex DC.	Currency Creek 629	KT631981	–	–	KT632551
<i>Eucalyptus spathulata</i> subsp. <i>spathulata</i>	Accepted		Hook.	Currency Creek 234	KT631982	AF058477	–	–
<i>Eucalyptus sphaerocarpa</i>	Accepted		L.A.S.Johnson & Blaxell	GenBank	FJ494769	FJ494730	–	–
<i>Eucalyptus splendens</i> subsp. <i>splendens</i>	Accepted		Rule	Currency Creek 1722	KT631983	KT631344	KT633140	KT632552
<i>Eucalyptus spreta</i>	Accepted		L.A.S.Johnson & K.D.Hill	Currency Creek 3634	KT631984	KT631345	KT633141	KT632553
<i>Eucalyptus squamosa</i>	Accepted		H.Deane & Maiden	Currency Creek 2072	KT631985	KT631346	KT633142	KT632554
<i>Eucalyptus staeri</i>	Accepted		(Maiden) Maiden ex Kessell & C.A.Gardner	Currency Creek 1133	KT631986	AF390531	–	–

Taxon	Status	Accepted name	Authority	Collection source	ETS accession	ITS accession	matK accession	psbA accession
<i>Eucalyptus steedmanii</i>	Accepted		C.A.Gardner	Currency Creek 317	KT631987	KT631347	KT633143	KT632555
<i>Eucalyptus stellulata</i>	Accepted		Sieber ex DC.	ANBG 9102880	KT631988	KT631348	KT633144	KT632556
<i>Eucalyptus stenostoma</i>	Accepted		L.A.S.Johnson & Blaxell	Currency Creek 2900	KT631989	FJ494731	–	–
<i>Eucalyptus stoatei</i>	Accepted		C.A.Gardner	Currency Creek 181	KT631990	KT631349	KT633145	KT632557
<i>Eucalyptus stowardii</i>	Accepted		Maiden	CANB 790458**	KT631991	KT631350	KT633146	–
<i>Eucalyptus stricklandii</i>	Accepted		Maiden	Currency Creek 3646	KT631992	KT631351	KT633147	KT632558
<i>Eucalyptus stricta</i>	Accepted		Sieber ex Spreng.	Currency Creek 1751	KT631993	EF051501	–	–
<i>Eucalyptus strzeleckii</i>	Accepted		Rule	Currency Creek 1731	KT631994	KT631352	KT633148	KT632559
<i>Eucalyptus strzeleckii</i> subsp. <i>strzeleckii</i>								
<i>Eucalyptus sturgissiana</i>	Accepted		L.A.S.Johnson & Blaxell	Currency Creek 1757	KT631995	KT631353	KT633149	–
<i>Eucalyptus subangusta</i>	Accepted		(Blakely) Brooker & Hopper	Currency Creek 3451	KT631996	KT631354	KT633150	KT632560
<i>Eucalyptus subangusta</i> subsp. <i>subangusta</i> *								
<i>Eucalyptus subcrenulata</i>	Accepted		Maiden & Blakely	ANBG 9702884	KT631997	–	–	–
<i>Eucalyptus suberea</i>	Accepted		Brooker & Hopper	CANB 794196**	KT631998	FJ494732	KT633151	KT632561
<i>Eucalyptus subtilis</i>	Accepted		Brooker & Hopper	Currency Creek 3715	KT631999	KT631355	KT633152	KT632562
<i>Eucalyptus suggrandis</i>	Accepted		L.A.S.Johnson & K.D.Hill	Currency Creek 3583	KT632000	KT631356	KT633153	KT632563
<i>Eucalyptus suggrandis</i> subsp. <i>suggrandis</i>								
<i>Eucalyptus surgens</i>	Accepted		Brooker & Hopper	Currency Creek 558	KT632001	KT631357	KT633154	KT632564
<i>Eucalyptus synandra</i>	Accepted		Crisp	CANB 794049**	KT632002	KT631358	KT633155	KT632565
<i>Eucalyptus talyuberlup</i>	Accepted		D.J.Carr & S.G.M.Carr	Currency Creek 4804	KT632003	KT631359	KT633156	KT632566
<i>Eucalyptus tectifera</i>	Accepted		F.Muell.	CANB 785474**	KT632004	KT631360	KT633157	–
<i>Eucalyptus tenella</i>	Accepted		L.A.S.Johnson & K.D.Hill	Currency Creek 763	KT632005	KT631361	KT633158	KT632567
<i>Eucalyptus tenera</i>	Accepted		L.A.S.Johnson & K.D.Hill	Currency Creek 3590	KT632006	KT631362	KT633159	KT632568
<i>Eucalyptus tenuipes</i>	Accepted		(Maiden & Blakely) Blakely & C.T.White	GenBank	FJ799979	AF390523	HQ287637	FJ654340
<i>Eucalyptus tenuiramis</i>	Accepted		Miq.	CANB 692639**	KT632007	AF058500	KT633160	KT632569
<i>Eucalyptus tenuis</i>	Accepted		Brooker & Hopper	Currency Creek 326	KT632008	KT631363	KT633161	KT632570
<i>Eucalyptus tephrodes</i>	Accepted		L.A.S.Johnson & K.D.Hill	Currency Creek 1194	KT632009	KT631364	KT633162	KT632571
<i>Eucalyptus terebra</i>	Accepted		L.A.S.Johnson & K.D.Hill	Currency Creek 3607	KT632010	KT631365	KT633163	KT632572
<i>Eucalyptus tereticornis</i>	Accepted		Sm.	Currency Creek 713	KT632011	KT631366	KT633164	KT632573
<i>Eucalyptus tereticornis</i> subsp. <i>tereticornis</i>								
<i>Eucalyptus tetrapleura</i>	Accepted		L.A.S.Johnson	Currency Creek 1242	KT632012	KT631367	KT633165	KT632574
<i>Eucalyptus tetraptera</i> *	Accepted		Turcz.	Waite Arboretum 1860A	KT632013	KT631368	KT633166	KT632575
<i>Eucalyptus tetradonta</i>	Accepted		F.Muell.	CANB 785477**	FJ654428	AF390465	KT633167	KT632576
<i>Eucalyptus thamnooides</i>	Accepted		Brooker & Hopper	Currency Creek 3545	KT632014	KT631369	KT633168	KT632577
<i>Eucalyptus tholiformis</i>	Accepted		A.R.Bean & Brooker	Waite Arboretum 2708	KT632015	KT631370	KT633169	–
<i>Eucalyptus thozetiana</i>	Accepted		F.Muell. ex R.T.Baker	CANB 785597**	KT632016	KT631371	KT633170	–
<i>Eucalyptus tindaliae</i>	Accepted		Blakely	GenBank	–	AF390534	–	–
<i>Eucalyptus tintinnans</i>	Accepted		(Blakely & Jacobs) L.A.S.Johnson & K.D.Hill	CANB 557752**	KT632017	KT631372	KT633171	KT632578
<i>Eucalyptus todiana</i>	Accepted		F.Muell.	CANB 530801**	FJ494771	FJ494735	–	KT632579
<i>Eucalyptus torquata</i>	Accepted		Luehm.	CANB 794031**	KT632018	KT631373	KT633172	KT632580
<i>Eucalyptus tortilis</i>	Accepted		L.A.S.Johnson & K.D.Hill	Currency Creek 130	KT632019	KT631374	KT633173	KT632581
<i>Eucalyptus transcontinentalis</i> *	Accepted		Maiden	Currency Creek 550	KT632020	KT631375	KT633174	KT632582
<i>Eucalyptus tricarpa</i>	Accepted		(L.A.S.Johnson) L.A.S.Johnson & K.D.Hill	ANBG 8701791	KT632021	KT631376	KT633175	KT632583
<i>Eucalyptus triflora</i>	Accepted		(Maiden) Blakely	ANBG 763500	KT632022	KT631377	KT633176	KT632584
<i>Eucalyptus trivalvis</i>	Accepted		Blakely	Waite Arboretum 1842	KT632023	KT631378	KT633177	KT632585

Taxon	Status	Accepted name	Authority	Collection source	ETS accession	ITS accession	<i>matK</i> accession	<i>psbA</i> accession
<i>Eucalyptus tumida</i>	Accepted		Brooker & Hopper	CANB 794343**	KT632024	KT631379	KT633178	KT632586
<i>Eucalyptus ultima</i>	Accepted		L.A.S.Johnson & K.D.Hill	Currency Creek 1182	KT632025	KT631380	KT633179	–
<i>Eucalyptus umbra</i>	Accepted		F.Muell. ex R.T.Baker	ANBG 60074	KT632026	AF058505	KT633180	KT632587
<i>Eucalyptus uncinata</i> subsp. <i>uncinata</i>	Accepted		Turcz.	Currency Creek s.n.	KT632027	KT631381	KT633181	KT632588
<i>Eucalyptus urna</i>	Accepted		D.Nicolle	Currency Creek 1817	KT632028	KT631382	KT633182	KT632589
<i>Eucalyptus urophylla</i>	Accepted		S.T.Blake	CANB 180346**	–	AF390489	KT633183	KT632590
<i>Eucalyptus utilis</i>	Accepted		Brooker & Hopper	Currency Creek 3705	KT632029	KT631383	KT633184	KT632591
<i>Eucalyptus valens</i>	Accepted		L.A.S.Johnson & K.D.Hill	Currency Creek 158	KT632030	KT631384	KT633185	KT632592
<i>Eucalyptus vegrandis</i> subsp. <i>vegrandis</i>	Accepted		L.A.S.Johnson & K.D.Hill	Currency Creek 3563	KT632031	KT631385	KT633186	KT632593
<i>Eucalyptus vernicosa</i>	Accepted		Hook.f.	ANBG s.n.	KT632032	KT631386	KT633187	KT632594
<i>Eucalyptus verrucata</i>	Accepted		Ladiges & Whiffin	Currency Creek 3787	KT632033	KT631387	KT633188	KT632595
<i>Eucalyptus vesiculosa</i>	Accepted		Brooker & Hopper	Currency Creek s.n.	KT632034	KT631388	KT633189	KT632596
<i>Eucalyptus vicina</i>	Accepted		L.A.S.Johnson & K.D.Hill	GenBank	–	HM116971	–	–
<i>Eucalyptus victoriana</i>	Accepted		Ladiges & Whiffin	Currency Creek 3786	KT632035	KT631389	KT633190	–
<i>Eucalyptus victrix</i>	Accepted		L.A.S.Johnson & K.D.Hill	Currency Creek s.n.	KT632036	–	KT633191	KT632597
<i>Eucalyptus viminalis</i> subsp. <i>viminalis</i>	Accepted		Labill.	Currency Creek 1969	KT632037	HM596069	KT633192	KT632598
<i>Eucalyptus virens</i>	Accepted		Brooker & A.R.Bean	Currency Creek 2116	KT632038	KT631390	KT633193	KT632599
<i>Eucalyptus viridis</i>	Accepted		F.Muell. ex R.T.Baker	Currency Creek 457	KT632039	KT631391	KT633194	KT632600
<i>Eucalyptus vittata</i>	Accepted		D.Nicolle	Currency Creek 3667	KT632040	KT631392	KT633195	KT632601
<i>Eucalyptus vokesensis</i>	Accepted		D.Nicolle & L.A.S.Johnson & K.D.Hill	Currency Creek 2619	KT632041	KT631393	KT633196	KT632602
<i>Eucalyptus wandoo</i> subsp. <i>wandoo</i>	Accepted		Blakely	Currency Creek 3447	KT632042	KT631394	KT633197	KT632603
<i>Eucalyptus websteriana</i> subsp. <i>websteriana</i> *	Accepted		Maiden	Waite Arboretum 1833B	KT632043	–	KT633198	KT632604
<i>Eucalyptus wetarensis</i>	Accepted		L.D.Pryor	GenBank	–	AY039752	–	–
<i>Eucalyptus whitei</i> *	Accepted		Maiden & Blakely	Currency Creek 2550	KT632044	–	KT633199	KT632605
<i>Eucalyptus wilcoxii</i>	Accepted		Boland & Kleinig	Currency Creek 1773	KT632045	KT631395	KT633200	–
<i>Eucalyptus williamsiana</i>	Accepted		L.A.S.Johnson & K.D.Hill	Currency Creek 660	KT632046	KT631396	KT633201	KT632606
<i>Eucalyptus willisii</i> subsp. <i>willisii</i>	Accepted		Ladiges, Humphries & Brooker	CANB 468525**	KT632047	AF058499	KT633202	KT632607
<i>Eucalyptus woodwardii</i>	Accepted		Maiden	CANB 794035**	KT632048	KT631397	–	KT632608
<i>Eucalyptus wubinensis</i> *	Accepted		L.A.S.Johnson & K.D.Hill	Currency Creek 3498	KT632049	–	–	–
<i>Eucalyptus wyolensis</i>	Accepted		Boomsma	Currency Creek 2633	KT632050	KT631398	KT633204	KT632609
<i>Eucalyptus xanthonema</i> subsp. <i>xanthonema</i>	Accepted		Turcz.	CANB 794264**	KT632051	KT631399	KT633205	KT632610
<i>Eucalyptus xerothermica</i>	Accepted		L.A.S.Johnson & K.D.Hill	Currency Creek 541	–	KT631400	–	KT632611
<i>Eucalyptus yalataensis</i>	Accepted		Boomsma	Currency Creek 2142	KT632052	KT631401	KT633206	KT632612
<i>Eucalyptus yangoura</i>	Synonym	<i>Eucalyptus globoidea</i>	Blakely	Waite Arboretum 2389	KT632053	KT631402	KT633207	KT632613
<i>Eucalyptus yarraensis</i>	Accepted		Maiden & Cambage	ANBG 8005851	KT632054	KT631403	KT633208	–
<i>Eucalyptus yilgarnensis</i>	Accepted		(Maiden) Brooker	Waite Arboretum 2349	KT632055	KT631404	KT633209	KT632614
<i>Eucalyptus youmanii</i>	Accepted		Blakely & McKie	ANBG 73091	KT632056	KT631405	KT633210	KT632615
<i>Eucalyptus youngiana</i>	Accepted		F.Muell.	Currency Creek 523	KT632057	KT631406	KT633211	KT632616
<i>Eucalyptus yumbarrana</i>	Accepted		Boomsma	Currency Creek 1808	KT632058	KT631407	KT633212	–
<i>Eucalyptus zopherophloia</i>	Accepted		Brooker & Hopper	Waite Arboretum 2725	KT632059	KT631408	KT633213	KT632617

Taxon	Status	Accepted name	Authority	Collection source	ETS accession	ITS accession	<i>matK</i> accession	<i>psbA</i> accession
<i>Heteropyxis natalensis</i>	Accepted		Harv.	GenBank	–	AF283676	AF368208	–
<i>Hypocalymma linifolium</i>	Synonym	<i>Hypocalymma tetrapterum</i>	Turcz.	GenBank	–	–	AF489379	–
<i>Kjellbergiodendron celebicum</i>	Accepted		(Koord.) Merr.	GenBank	–	HM160110, HM160109	AF368209	–
<i>Kunzea ericoides</i>	Accepted		(A.Rich.) Joy Thomps.	GenBank	EU815435	DQ499113	AF184724	–
<i>Lophostemon confertus</i>	Accepted		(R.Br.) Peter G.Wilson & J.T.Waterh.	GenBank	AM489925	AF390444	AM489994	AF190368
<i>Lophostemon suaveolens</i>	Accepted		(Sol. ex Gaertn.) Peter G.Wilson & J.T.Waterh.	CANB 750277**	KT632060	KT631409	KT633214	KT632618
<i>Myrtus communis</i>	Accepted		L.	GenBank	AM489955	AM234149	AY525136	–
<i>Stockwellia quadrifida</i>	Accepted		D.J.Carr, S.G.M.Carr & B.Hyland	GenBank	DQ352539	AF058452	AY525138	–
<i>Syncarpia glomulifera</i>	Accepted		(Sm.) Nied.	Boodooree Botanic Garden s.n.	KT632061	HM160117	AF368220	KT632619
<i>Syncarpia hillii</i>	Accepted		F.M.Bailey	ANBG 612122	KT632062	KT631410	KT633215	KT632620
<i>Syzygium angophoroides</i>	Accepted		(F.Muell.) B.Hyland	GenBank	AY187106	AY187172	DQ088557	–
<i>Tepualia stipularis</i>	Accepted		(Hook. & Arn.) Griseb.	GenBank	AM489969	AM234071	AF368222	AM489884

References

- Nicolle D (2015) Classification of the eucalypts (*Angophora*, *Corymbia* and *Eucalyptus*) Version 2. Available at <http://www.dn.com.au/Classification-Of-The-Eucalypts-V2-Apr2015.pdf> [Verified 24 February 2017]
- Ladiges PY, Bayly MJ, Nelson GJ (2010). East–west continental vicariance in *Eucalyptus* subgenus *Eucalyptus*. In ‘Beyond Cladistics: the Branching of a Paradigm The Branching of a Paradigm’. (Eds DM Williams, S Knapp) pp. 267–302. (University of California Press: Berkeley, CA, USA) [doi:10.1525/california/9780520267725.003.0014](https://doi.org/10.1525/california/9780520267725.003.0014)
- Veevers JJ (2000) ‘Billion-Year Earth History of Australia and Neighbours in Gondwanaland.’ (GEMOC Press: Sydney, NSW, Australia)