

PYLE[®] view

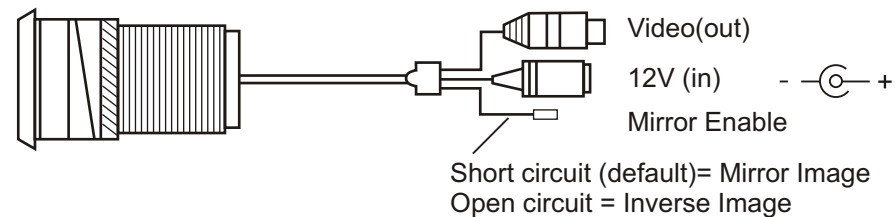


PLCM6000

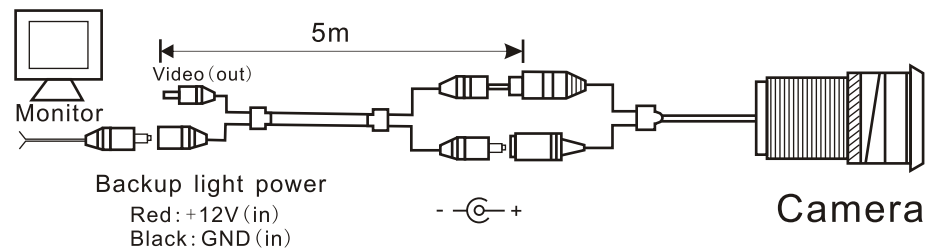
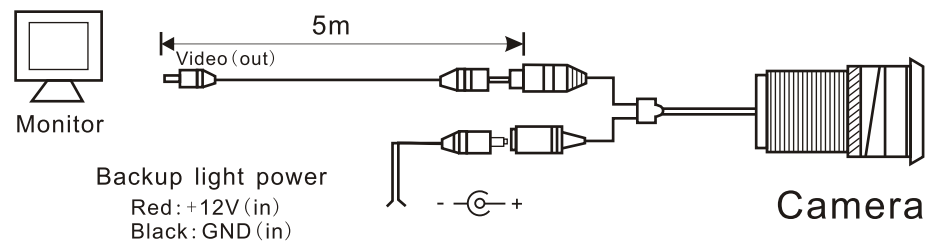
This rearview monitor is designed only for use with closed circuit camera device in order to improve vehicle rearview disability. It is not intended as an entertainment device and should not be connected to any automotive entertainment electronic devices while driving car.

封二空白

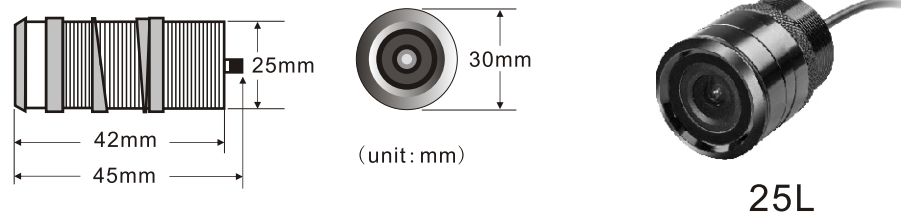
② 3 Lines



C: Connection



D: Dimensions



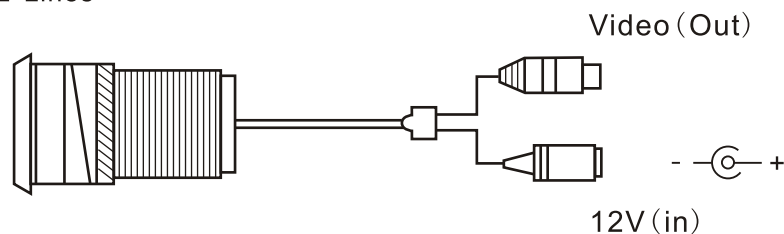
7、CMOS Auto Water-Proof Camera

A: Special Features

	TV System	NTSC	
1	Sensor	USA OV7910 / CMOS	
2	Effective Pixels	510 x 492	
3	Horizontal Sync Frequency	15734kHz	
4	Vertical Sync Frequency	60Hz	
5	Scanning System	2:1 Interlace	
6	Sync. System	Internal	
7	AGC	Auto	
8	BLC	Auto	
9	White Balance	Auto	
10	Resolution	380TV Lines	
11	Video out	1.0Vp-p, 750hm	
12	S/N Ratio	>48dB	
13	Current Consumption	Max. 150mA	
14	Power Supply	DC12V ± 20%	
15	Operating Temperature	-20℃ -60℃, RH95%MAX	
16	Storage Temperature	-30℃ -60℃, RH95%MAX	
17	Lens Angel	92°	
18	Horizontal Angel	90°	85°
19	Water-proof	IP67-IP68	
20	IR leds	0 Pcs	
21	Minimum Illumination	<3.0 Lux	

B: Operation

① 2 Lines



1、PRECAUTIONS BERORE USE

- Read this manual for safety, and use the product correctly.
 - This product is designed for DC 12V vehicles. Make sure of the correct power voltage.
 - This product works within the temperature range of 0°C~50°C.
 - Sometimes the picture may appear dim at the beginning of working at lower temperature, but it turns to normal within a few minutes.
 - Do not disassemble or change the product. Disassembling or change of the product may cause fire accident or electric shock. Further, disassembling or change cannot be covered by the after service guarantee.
 - Make sure of the safety of the driver and the passengers of the car in when installing the product in the car.
 - Do not use the product while the engine is off. Otherwise, the battery may be discharged.
 - Keep the sound volume at the normal level so that the sound may not disturb the driver.
 - For safety, do not operate the product while driving the car.
 - The rear view may be reversed due to the type of some rear view cameras; therefore, be careful not to rely upon the monitor picture while driving the car. Additional special equipments are needed for DC 24V vehicles, since.
- ⚠ This product is used only for DC 12V vehicle, in case of using at DC 24V vehicle, the special inverter is required.

2、NAME OF FUNCTIONS



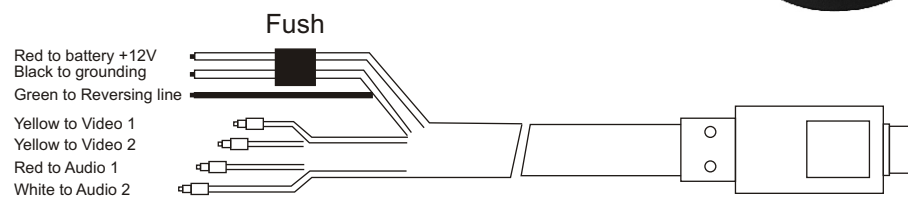
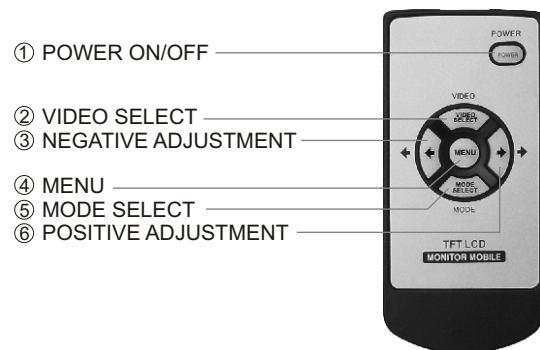
- ① AV1/AV2
- ② UP
- ③ DOWN

- ④ FUNCTION SETTING MENU
- ⑤ POWER
- ⑥ REMOTE SENSOR WINDOW

3、FEATURES AND COMPONENTS

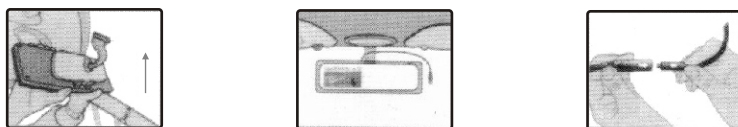
- Every functions of this product are controlled by the remote control unit.
- Selection of the AV1 is for rear view function under rear view function.
- Horizontal or vertical reverse picture control is available.

- MONITOR: 1PC
- CONNECTION CABLE: 1PC
- REMOTE CONTROL UNIT: 1PC(OPTION)
- OPERATION MANUAL: 1PC
- CMOS CAMERA: 1PC



AV-1 INPUT	AV-2 INPUT	POWER INPUT & REAR VIEW SIGNAL INPUT
VIDEO: YELLOW	VIDEO: YELLOW	RED WIRE: ACC +12V
AUDIO: RED	AUDIO: WHITE	BLACK WIRE: CHASSIS GROUND
		GREEN WIRE: REVERSING

4、INSTALLATION



- (1) Install clips of the R.V.M to bottom of existing mirror in the vehicle. Push R.V.M carefully upward until below clip locks on to top part of existing mirror.
- (2) Adjust R.V.M for optimum viewing angle and check the clips for proper mounting.
 - Check the R.V.M position; made sure it does not impede the driver or passenger of the vehicle.
- (3) Connect cables by matching the arrows on the cable and arrange the cables into proper place for not impeded to driver of passenger.

* R.V.M: Rear View Mirror (Monitor)

5、WIRE-CONNECTION

- (1) Power connection
 - Red wire - Positive DC 12 V
To be connected to the wire that supply DC 12V in the ACC position of the car.
 - Black wire - To be connected to the chassis ground
- (2) Av1 input
 - Yellow - Rear view monitor videl input
 - Red - Rear view monitor audio input
- (3) AV2 input
 - Yellow - Video input
 - White - Audio input
- (4)Green wire - To be connected to the reverse gear sensing signal [DC 12V]
 - This sensing signal wire is to be connected to the position where DC 12V is supplied from when the transmission position of the car is in the rear

6、SPECIFICATIONS

- POWER RATING:DC 12V
- POWER CONSUMPTION:700 mA 8W (DC 12V)
- VIDEO SYSTEM:NTSC/PAL SYSTEM
- SIZE OF THE PICTURE:6.0 INCH
- DIMENSIONS:310(W)X98(H)X44(D)M/M
- WEIGHT:980 g

* The above specifications are subject to change for safety or improvement without prior notice