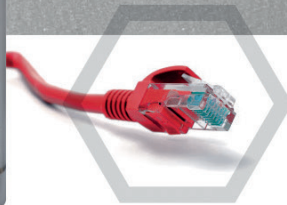




SECURITY AND TRANSPORT ILLUMINATORS PRODUCT OVERVIEW

Stay Connected to your Security



Intelligent Network Lighting

A comprehensive range of Infra-Red, White-Light and Hybrid LED Network Illuminators

INFRA-RED

Network & PoE 4-5

Low Voltage 6-7

Specialist 8, 20
(Panoramic, Extreme, 730nm and Camera Housing Kits)

Pulsed Lighting 17, 19

Hazardous Area Lighting 21

WHITE-LIGHT

Network & PoE 9-10

Low Voltage 11-12

Specialist 13, 20
(Panoramic, Extreme and Camera Housing Kits)

URBAN 16

Pulsed Lighting 18-19

HYBRID

Network & PoE 14

Low Voltage 15

ACCESSORIES

Accessories 22-23



VARIO2 iP PoE i16



VARIO2 iP PoE i8



VARIO2 iP PoE i6



VARIO2 iP PoE i4

Max Distance	500m (1640ft) - DC supply 420m (1378ft) - PoE supply	350m (1148ft)	200m (656ft)	144m (472ft)
Angles and Max Distances	10°x10° - 500m (1640ft) 35°x10° - 250m (820ft) 60°x25° - 135m (443ft) 80°x30° - 105m (344ft) 120°x50° - 65m (213ft) Other angles available	10°x10° - 350m (1148ft) 35°x10° - 165m (541ft) 60°x25° - 95m (311ft) 80°x30° - 70m (230ft) 120°x50° - 45m (148ft) Other angles available	10°x10° - 200m (656ft) 35°x10° - 120m (394ft) 60°x25° - 70m (230ft) 80°x30° - 50m (164ft) 120°x50° - 30m (98ft) Other angles available	10°x10° - 144m (472ft) 35°x10° - 78m (256ft) 60°x25° - 54m (177ft) 80°x30° - 36m (118ft) 120°x50° - 24m (79ft) Other angles available
Input	90W PoE (4-pair PoE) IEEE 802.3bt or 24V DC	60W PoE (4-pair PoE) IEEE 802.3bt or 24V DC	PoE+ IEEE 802.3at or 24V DC	PoE+ IEEE 802.3at or 24V DC
Beam Shape	Elliptical with HRT (Hot Spot Reduction Technology)	Elliptical with HRT (Hot Spot Reduction Technology)	Elliptical with HRT (Hot Spot Reduction Technology)	Elliptical with HRT (Hot Spot Reduction Technology)
Beam Angle System	VARIO Interchangeable Lens System	VARIO Interchangeable Lens System	VARIO Interchangeable Lens System	VARIO Interchangeable Lens System
Consumption	93W - DC supply 71W - PoE supply	51W	25W	15W (25W for 940nm variants)
LED type	Platinum Elite SMT LEDs	Platinum Elite SMT LEDs	Platinum Elite SMT LEDs	Platinum Elite SMT LEDs
Number of LEDs	48	24	12	9 (12 for 940nm variants)
Wavelength	850nm (940nm options available)	850nm (940nm options available)	850nm	850nm (940nm options available)
IP Rating	IP66	IP66	IP66	IP66
Temperature Range	-50° to +50°C (-58 to 122°F)	-50° to +50°C (-58 to 122°F)	-50° to +50°C (-58 to 122°F)	-50° to +50°C (-58 to 122°F)
Colour	Black	Black	Black	Black
Weight	3.16kg (7lbs)	1.65kg (3.6lbs)	950g (2.1lbs)	950g (2.1lbs)
Dimensions	180 x 277 x 75mm (7" x 11" x 2.9" approx.)	135 x 180 x 68.2mm 5" x 7" x 2.6" approx	100 x 135 x 66mm 4" x 5" x 2.5" approx	100 x 135 x 66mm 4" x 5" x 2.5" approx
Additional Features	VARIO IP Web Interface Power Control, Boost, Deterrent in basic user settings Control individual lights or groups Standard kit includes 10°x10°, 35°x10° and 60°x25° angles Timer, optional soft start, selectable input / output, advanced set-up and diagnostics	VARIO IP Web Interface Power Control, Boost, Deterrent in basic user settings Control individual lights or groups Standard kit includes 10°x10°, 35°x10° and 60°x25° angles Timer, optional soft start, selectable input / output, advanced set-up and diagnostics	VARIO IP Web Interface Power Control, Boost, Deterrent in basic user settings Control individual lights or groups Standard kit includes 10°x10°, 35°x10° and 60°x25° angles Timer, optional soft start, selectable input / output, advanced set-up and diagnostics	VARIO IP Web Interface Power Control, Boost, Deterrent in basic user settings Control individual lights or groups Standard kit includes 10°x10°, 35°x10° and 60°x25° angles Timer, optional soft start, selectable input / output, advanced set-up and diagnostics
Accessories*	A range of Integrations available. VUB Bracket VARIO PSU	A range of Integrations available. VUB Bracket VARIO PSU	A range of Integrations available. VUB Bracket VARIO PSU	A range of Integrations available. VUB Bracket VARIO PSU

* Please see Accessories on Pages 22-23



VARIO2 PoE i8



VARIO2 PoE i6



VARIO2 PoE i4



VARIO2 PoE i2

Max Distance	350m (1148ft)	200m (656ft)	144m (472ft)	62m (203ft)
Angles and Max Distances	10°x10° - 350m (1148ft) 35°x10° - 165m (541ft) 60°x25° - 95m (311ft) 80°x30° - 70m (230ft) 120°x50° - 45m (148ft) Other angles available	10°x10° - 200m (656ft) 35°x10° - 120m (394ft) 60°x25° - 70m (230ft) 80°x30° - 50m (164ft) 120°x50° - 30m (98ft) Other angles available	10°x10° - 144m (472ft) 35°x10° - 78m (256ft) 60°x25° - 54m (177ft) 80°x30° - 36m (118ft) 120°x50° - 24m (79ft) Other angles available	10°x10° - 62m (203ft) 35°x10° - 42m (138ft) 60°x25° - 26m (85ft) 80°x30° - 18m (59ft) 120°x50° - 14m (46ft) Other angles available
Input	60W PoE++ (4-pair PoE)	PoE+ IEEE 802.3at	PoE+ IEEE 802.3at	PoE IEEE 802.3af
Beam Shape	Elliptical with HRT (Hot Spot Reduction Technology)	Elliptical with HRT (Hot Spot Reduction Technology)	Elliptical with HRT (Hot Spot Reduction Technology)	Elliptical with HRT (Hot Spot Reduction Technology)
Beam Angle System	VARIO Interchangeable Lens System	VARIO Interchangeable Lens System	VARIO Interchangeable Lens System	VARIO Interchangeable Lens System
Consumption	49W	25W	15W (25W for 940nm variants)	8W
LED type	Platinum Elite SMT LEDs	Platinum Elite SMT LEDs	Platinum Elite SMT LEDs	Platinum Elite SMT LEDs
Number of LEDs	24	12	9 (12 for 940nm variants)	3
Wavelength	850nm (940nm options available)	850nm	850nm (940nm options available)	850nm (940nm options available)
IP Rating	IP66	IP66	IP66	IP66
Temperature Range	-50° to +50°C (-58 to 122°F)	-50° to +50°C (-58 to 122°F)	-50° to +50°C (-58 to 122°F)	-50° to +50°C (-58 to 122°F)
Colour	Black	Black	Black	Black
Weight	1.65kg (3.6lbs)	950g (2.1lbs)	950g (2.1lbs)	600g (1.3lbs)
Dimensions	135 x 180 x 68.2mm 5" x 7" x 2.6" approx	100 x 135 x 66mm 4" x 5" x 2.5" approx	100 x 135 x 66mm 4" x 5" x 2.5" approx	75 x 100 x 64mm 3" x 4" x 2.5" approx
Additional Features	LED status indicator, Photocell Advanced security settings Manual programming inputs Standard kit includes 10°x10°, 35°x10° and 60°x25° angles Photocell following output and Telemetry control available - Premium versions only	LED status indicator, Photocell Advanced security settings Manual programming inputs Standard kit includes 10°x10°, 35°x10° and 60°x25° angles Photocell following output and Telemetry control available - Premium versions only	LED status indicator Photocell Advanced security settings Manual programming inputs Standard kit includes 10°x10°, 35°x10° and 60°x25° angles Photocell following output and Telemetry control available - Premium versions only	LED status indicator Photocell Advanced security settings Manual programming inputs Standard kit includes 10°x10°, 35°x10° and 60°x25° angles Photocell following output and Telemetry control available - Premium versions only
Accessories*	Optional VARIO Remote control VUB Bracket	Optional VARIO Remote control VUB Bracket	Optional VARIO Remote control VUB Bracket	Optional VARIO Remote control VUB Bracket

* Please see Accessories on Pages 22-23



VARIO2 i16-1



VARIO2 i8-1



VARIO2 i6-1



VARIO2 i4-1



VARIO2 i2-1

Max Distance	500m (1640ft)	350m (1148ft)	200m (656ft)	144m (472ft)	78m (256ft)
Angles and Max Distances	10°x10° - 500m (1640ft) 35°x10° - 250m (820ft) 60°x25° - 135m (443ft) 80°x30° - 105m (344ft) 120°x50° - 65m (213ft) Other angles available	10°x10° - 350m (1148ft) 35°x10° - 165m (541ft) 60°x25° - 95m (311ft) 80°x30° - 70m (230ft) 120°x50° - 45m (148ft) Other angles available	10°x10° - 200m (656ft) 35°x10° - 120m (394ft) 60°x25° - 70m (230ft) 80°x30° - 50m (164ft) 120°x50° - 30m (98ft) Other angles available	10°x10° - 144m (472ft) 35°x10° - 78m (256ft) 60°x25° - 54m (177ft) 80°x30° - 36m (118ft) 120°x50° - 24m (79ft) Other angles available	10°x10° - 78m (256ft) 35°x10° - 54m (177ft) 60°x25° - 36m (118ft) 80°x30° - 24m (79ft) 120°x50° - 18m (59ft) Other angles available
Input	24V AC/DC	12-24V AC/DC	12-24V AC/DC	12-24V AC/DC	12-24V AC/DC
Beam Shape	Elliptical with HRT (Hot Spot Reduction Technology)	Elliptical with HRT (Hot Spot Reduction Technology)	Elliptical with HRT (Hot Spot Reduction Technology)	Elliptical with HRT (Hot Spot Reduction Technology)	Elliptical with HRT (Hot Spot Reduction Technology)
Beam Angle System	VARIO Interchangeable Lens System	VARIO Interchangeable Lens System	VARIO Interchangeable Lens System	VARIO Interchangeable Lens System	VARIO Interchangeable Lens System
Consumption	100W	46W	25W	13W (25W for 940nm variants)	10W
LED type	Platinum Elite SMT LEDs	Platinum Elite SMT LEDs	Platinum Elite SMT LEDs	Platinum Elite SMT LEDs	Platinum Elite SMT LEDs
Number of LEDs	48	24	12	9 (12 for 940nm variants)	6
Wavelength	850nm (940nm options available)	850nm (940nm options available)	850nm	850nm (940nm options available)	850nm (940nm options available)
IP Rating	IP66	IP66	IP66	IP66	IP66
Temperature Range	-50° to +50°C (-58 to 122°F)	-50° to +50°C (-58 to 122°F)	-50° to +50°C (-58 to 122°F)	-50° to +50°C (-58 to 122°F)	-50° to +50°C (-58 to 122°F)
Colour	Black	Black	Black	Black	Black
Weight	3.1kg (6.8lbs)	1.65kg (3.6lbs)	950g (2.1lbs)	950g (2.1lbs)	600g (1.3lbs)
Dimensions	180 x 277 x 75mm 7" x 11" x 2.9" approx	135 x 180 x 68.2mm 5" x 7" x 2.6" approx	100 x 135 x 66mm 4" x 5" x 2.5" approx	100 x 135 x 66mm 4" x 5" x 2.5" approx	75 x 100 x 64mm 3" x 4" x 2.5" approx
Additional Features	LED status indicator Photocell, Photocell following output Telemetry input Advanced security settings Manual programming inputs Standard kit includes 10°x10°, 35°x10° and 60°x25° angles	LED status indicator Photocell, Photocell following output Telemetry input Advanced security settings Manual programming inputs Standard kit includes 10°x10°, 35°x10° and 60°x25° angles	LED status indicator Photocell, Photocell following output Telemetry input Advanced security settings Manual programming inputs Standard kit includes 10°x10°, 35°x10° and 60°x25° angles	LED status indicator Photocell, Photocell following output Telemetry input Advanced security settings Manual programming inputs Standard kit includes 10°x10°, 35°x10° and 60°x25° angles	LED status indicator Photocell, Photocell following output Telemetry input Advanced security settings Manual programming inputs Standard kit includes 10°x10°, 35°x10° and 60°x25° angles
Accessories*	VUB Bracket Optional VARIO Remote control VARIO PSU	VUB Bracket Optional VARIO Remote control VARIO PSU	VUB Bracket Optional VARIO Remote control VARIO PSU	VUB Bracket Optional VARIO Remote control VARIO PSU	VUB Bracket Optional VARIO Remote control VARIO PSU

* Please see Accessories on Pages 22-23



Vario2 i8-3



Vario2 i6-3



Vario2 i4-3



Vario2 i8-2



Vario2 i6-2



Vario2 i4-2



Vario2 i2-2

Max Distance	606m (1988ft)	346m (1135ft)	260m (853ft)	500m (1640ft)	282m (925ft)	220m (722ft)	120m (394ft)
Angles and Max Distances	10°x10° - 606m (1988ft) 35°x10° - 285m (935ft) 60°x25° - 164m (538ft) 80°x30° - 121m (397ft) 120°x50° - 80m (262ft) Other angles available	10°x10° - 346m (1135ft) 35°x10° - 208m (682ft) 60°x25° - 121m (397ft) 80°x30° - 87m (285ft) 120°x50° - 52m (171ft) Other angles available	10°x10° - 260m (853ft) 35°x10° - 145m (476ft) 60°x25° - 93m (305ft) 80°x30° - 62m (203ft) 120°x50° - 42m (138ft) Other angles available	10°x10° - 500m (1640ft) 35°x10° - 240m (787ft) 60°x25° - 135m (443ft) 80°x30° - 100m (328ft) 120°x50° - 65m (213ft) Other angles available	10°x10° - 282m (925ft) 35°x10° - 169m (554ft) 60°x25° - 99m (325ft) 80°x30° - 71m (233ft) 120°x50° - 42m (138ft) Other angles available	10°x10° - 220m (722ft) 35°x10° - 120m (394ft) 60°x25° - 76m (249ft) 80°x30° - 51m (167ft) 120°x50° - 34m (112ft) Other angles available	10°x10° - 120m (394ft) 35°x10° - 78m (256ft) 60°x25° - 54m (177ft) 80°x30° - 36m (118ft) 120°x50° - 26m (85ft) Other angles available
Input	12-24V AC/DC	12-24V AC/DC	12-24V AC/DC	12-24V AC/DC	12-24V AC/DC	12-24V AC/DC	12-24V AC/DC
Beam Shape	Elliptical with HRT (Hot Spot Reduction Technology)	Elliptical with HRT (Hot Spot Reduction Technology)	Elliptical with HRT (Hot Spot Reduction Technology)	Elliptical with HRT (Hot Spot Reduction Technology)	Elliptical with HRT (Hot Spot Reduction Technology)	Elliptical with HRT (Hot Spot Reduction Technology)	Elliptical with HRT (Hot Spot Reduction Technology)
Beam Angle System	VARIO Interchangeable Lens System	VARIO Interchangeable Lens System	VARIO Interchangeable Lens System	VARIO Interchangeable Lens System	VARIO Interchangeable Lens System	VARIO Interchangeable Lens System	VARIO Interchangeable Lens System
Consumption	138W	75W	39W (75W for 940nm variants)	92W	50W	26W (50W for 940nm variants)	20W
LED type	Platinum Elite SMT LEDs	Platinum Elite SMT LEDs	Platinum Elite SMT LEDs	Platinum Elite SMT LEDs	Platinum Elite SMT LEDs	Platinum Elite SMT LEDs	Platinum Elite SMT LEDs
Number of LEDs	72	36	27 (36 for 940nm variants)	48	24	18 (24 for 940nm variants)	12
Wavelength	850nm (940nm options available)	850nm	850nm (940nm options available)	850nm (940nm options available)	850nm	850nm (940nm options available)	850nm (940nm options available)
IP Rating	IP66	IP66	IP66	IP66	IP66	IP66	IP66
Temperature Range	-50° to +50°C (-58 to 122°F)	-50° to +50°C (-58 to 122°F)	-50° to +50°C (-58 to 122°F)	-50° to +50°C (-58 to 122°F)	-50° to +50°C (-58 to 122°F)	-50° to +50°C (-58 to 122°F)	-50° to +50°C (-58 to 122°F)
Colour	Black	Black	Black	Black	Black	Black	Black
Weight	6kg (13.2lbs)	3.75kg (8.3lbs)	3.75kg (8.3lbs)	4.5kg (9.9lbs)	2.25kg (5lbs)	2.25kg (5lbs)	1.5kg (3.3lbs)
Dimensions	423 x 226 x 68mm 17" x 9" x 3" approx	318 x 182 x 67mm 12.5" x 7" x 3" approx	318 x 182 x 67mm 12.5" x 7" x 3" approx	279 x 223 x 68mm 11" x 9" x 3" approx	209 x 178 x 67mm 8" x 7" x 3" approx	209 x 178 x 67mm 8" x 7" x 3" approx	159 x 144 x 63mm 6" x 5" x 2.5" approx
Additional Features	LED status indicator Photocell, Photocell following output Telemetry input Advanced security settings Manual programming inputs Standard kit includes 10°x10°, 35°x10° and 60°x25° angles	LED status indicator Photocell, Photocell following output Telemetry input Advanced security settings Manual programming inputs Standard kit includes 10°x10°, 35°x10° and 60°x25° angles	LED status indicator Photocell, Photocell following output Telemetry input Advanced security settings Manual programming inputs Standard kit includes 10°x10°, 35°x10° and 60°x25° angles	LED status indicator Photocell, Photocell following output Telemetry input Advanced security settings Manual programming inputs Standard kit includes 10°x10°, 35°x10° and 60°x25° angles	LED status indicator Photocell, Photocell following output Telemetry input Advanced security settings Manual programming inputs Standard kit includes 10°x10°, 35°x10° and 60°x25° angles	LED status indicator Photocell, Photocell following output Telemetry input Advanced security settings Manual programming inputs Standard kit includes 10°x10°, 35°x10° and 60°x25° angles	LED status indicator Photocell, Photocell following output Telemetry input Advanced security settings Manual programming inputs Standard kit includes 10°x10°, 35°x10° and 60°x25° angles
Accessories*	VUB Bracket Optional VARIO Remote control VARIO PSU	VUB Bracket Optional VARIO Remote control VARIO PSU	VUB Bracket Optional VARIO Remote control VARIO PSU	VUB Bracket Optional VARIO Remote control VARIO PSU	VUB Bracket Optional VARIO Remote control VARIO PSU	VUB Bracket Optional VARIO Remote control VARIO PSU	VUB Bracket Optional VARIO Remote control VARIO PSU

* Please see Accessories on Pages 22-23



vario2
PANORAMIC ULTRA i8-3



vario2
PANORAMIC ULTRA i6-3



vario2 EXTREME i16



vario2 EXTREME i8



vario2 730NM i16



vario2 730NM i8

Max Distance	260m (853ft) at 180°	170m (558ft) at 180°	500m (1640ft)	350m (1148ft)	Contact Raytec for max distances	Contact Raytec for max distances
Angles	60°-180° x 10°	60-180° x 10°	10°x10° - 500m (1640ft) 35°x10° - 250m (820ft) 60°x25° - 135m (443ft) 80°x30° - 105m (344ft) 120°x50° - 65m (213ft) Other angles available	10°x10° - 350m (1148ft) 35°x10° - 165m (541ft) 60°x25° - 95m (311ft) 80°x30° - 70m (230ft) 120°x50° - 45m (148ft) Other angles available	10°x10° 20°x10° 35°x10° Other angles available	10°x10° 20°x10° 35°x10° Other angles available
Input	12-24V AC/DC	12-24V AC/DC	24V AC/DC	24V AC/DC	24V AC/DC	12/24V AC/DC
Beam Shape	Elliptical with HRT (Hot Spot Reduction Technology)	Elliptical with HRT (Hot Spot Reduction Technology)	Elliptical with HRT (Hot spot Reduction Technology)	Elliptical with HRT (Hot spot Reduction Technology)	Elliptical with HRT (Hot spot Reduction Technology)	Elliptical with HRT (Hot spot Reduction Technology)
Beam Angle System	VARIO Interchangeable Lens System	VARIO Interchangeable Lens System	VARIO Interchangeable Lens System	VARIO Interchangeable Lens System	VARIO Interchangeable Lens System	VARIO Interchangeable Lens System
Consumption	138W	75W	100W	46W	100W	40W
LED type	Platinum Elite SMT LEDs	Platinum Elite SMT LEDs	Platinum Elite SMT LEDs	Platinum Elite SMT LEDs	Platinum Elite SMT LEDs	Platinum Elite SMT LEDs
Number of LEDs	72	36	48	24	48	24
Wavelength	850nm (940nm options available)	850nm (940nm options available)	850nm (940nm options available)	850nm (940nm options available)	730nm (Far Red)	730nm (Far Red)
IP Rating	IP66	IP66	IP67, IK09, Extreme Salinity, Extreme Humidity, Extreme Vibration	IP67, IK09, Extreme Salinity, Extreme Humidity, Extreme Vibration	IP66	IP66
Temperature Range	-50° to +50°C (-58 to 122°F)	-50° to +50°C (-58 to 122°F)	-50° to +75°C (-58° to 167°F)	-50° to +75°C (-58° to 167°F)	-50° to +50°C (-58°to +122°F)	-50° to +50°C (-58°to +122°F)
Colour	Black	Black	Black	Black	Black	Black
Weight	6kg (13.2lbs)	3.75kg (8.3lbs)	3.1kg (6.8lbs)	1.65kg (3.6lbs)	3.1kg (6.8lbs)	1.65kg (3.6lbs)
Dimensions	423 x 226 x 68mm (17" x 9" x 3" approx.)	318 x 182 x 67mm (12.5" x 7" x 3" approx.)	180 x 277 x 75mm (7" x 11" x 2.9" approx.)	135 x 180 x 68.2mm (5" x 7" x 2.6" approx.)	180 x 277 x 75mm (7" x 11" x 2.9" approx.)	135 x 180 x 68.2mm (5" x 7" x 2.6" approx.)
Additional Features	LED status indicator Photocell, Photocell following output Telemetry input Advanced security settings Manual programming inputs	LED status indicator Photocell, Photocell following output Telemetry input Advanced security settings Manual programming inputs	LED status indicator Photocell Photocell following output Telemetry input Advanced Security Settings Manual Programming Inputs Standard kit includes 10°x10°, 35°x10° and 60°x25° angles	LED status indicator Photocell Photocell following output Telemetry input Advanced Security Settings Manual Programming Inputs Standard kit includes 10°x10°, 35°x10° and 60°x25° angles	LED status indicator Photocell, Photocell following output Telemetry input Advanced security settings Manual programming inputs	LED status indicator Photocell, Photocell following output Telemetry input Advanced security settings Manual programming inputs
Accessories*	VUB Bracket Optional VARIO Remote control VARIO PSU	VUB Bracket Optional VARIO Remote control VARIO PSU	VUB Bracket Optional VARIO Remote control VARIO PSU	VUB Bracket Optional VARIO Remote control VARIO PSU	VUB Bracket Optional VARIO Remote control VARIO PSU	VUB Bracket Optional VARIO Remote control VARIO PSU

* Please see Accessories on Pages 22-23



VARIO2 iP PoE w16



VARIO2 iP PoE w8



VARIO2 iP PoE w4

Max Distance	250m (820ft) - DC supply 210m (689ft) - PoE supply	180m (591ft)	110m (361ft)
Angles and Max Distances	10°x10° - 250m (820ft) 35°x10° - 125m (410ft) 60°x25° - 70m (230ft) 80°x30° - 48m (157ft) 120°x50° - 35m (115ft) Other angles available	10°x10° - 180m (591ft) 35°x10° - 95m (312ft) 60°x25° - 50m (164ft) 80°x30° - 35m (115ft) 120°x50° - 25m (82ft) Other angles available	10°x10° - 110m (361ft) 35°x10° - 65m (213ft) 60°x25° - 35m (115ft) 80°x30° - 25m (82ft) 120°x50° - 18m (59ft) Other angles available
Input	90W PoE (4-pair PoE) IEEE 802.3bt or 24V DC	60W PoE (4-pair PoE), IEEE 802.3bt or 24V DC	PoE + IEEE 802.3at or 24V DC
Beam Shape	Elliptical with HRT (Hot Spot Reduction Technology)	Elliptical with HRT (Hot Spot Reduction Technology)	Elliptical with HRT (Hot Spot Reduction Technology)
Beam Angle System	VARIO Interchangeable Lens System	VARIO Interchangeable Lens System	VARIO Interchangeable Lens System
Consumption	75W - DC supply 71W - PoE supply	47W	25W
LED type	Platinum Elite SMT LEDs	Platinum Elite SMT LEDs	Platinum Elite SMT LEDs
Number of LEDs	48	24	12
Power Output (luminous flux)	7453lm	3727lm	1863lm
Wavelength	White-Light	White-Light	White-Light
IP Rating	IP66	IP66	IP66
Temperature Range	-50° to +50°C (-58 to 122°F)	-50° to +50°C (-58 to 122°F)	-50° to +50°C (-58 to 122°F)
Colour Temperature	6000K~	6000K~	6000K~
Colour Reproduction Index	>70	>70	>70
Colour	Silver	Silver	Silver
Weight	3.16kg (7lbs)	1.65kg (3.6lbs)	950g (2.1lbs)
Dimensions	180 x 277 x 75mm (7" x 11" x 2.9" approx.)	135 x 180 x 68.2mm 5" x 7" x 2.6" approx	100 x 135 x 66mm 4" x 5" x 2.5" approx
Additional Features	VARIO IP Web Interface. Power Control, Boost, Deterrent in basic user settings Control individual lights or groups Standard kit includes 10°x10°, 35°x10° and 60°x25° angles Timer, optional soft start, selectable input / output, advanced set-up and diagnostics	VARIO IP Web Interface. Power Control, Boost, Deterrent in basic user settings. Control individual lights or groups. Standard kit includes 10°x10°, 35°x10° and 60°x25° angles. Timer, optional soft start, selectable input / output, advanced set-up and diagnostics	VARIO IP Web Interface. Power Control, Boost, Deterrent in basic user settings. Control individual lights or groups. Standard kit includes 10°x10°, 35°x10° and 60°x25° angles. Timer, optional soft start, selectable input / output, advanced set-up and diagnostics
Accessories*	A range of integrations available VUB Bracket VARIO PSU	A range of integrations available VUB Bracket VARIO PSU	A range of integrations available VUB Bracket VARIO PSU



VARIO2 PoE w8



VARIO2 PoE w4



VARIO2 PoE w2

Max Distance	180m (591ft)	110m (361ft)	42m (138ft)
Angles and Max Distances	10°x10° - 180m (591ft) 35°x10° - 95m (312ft) 60°x25° - 50m (164ft) 80°x30° - 35m (115ft) 120°x50° - 25m (82ft) Other angles available	10°x10° - 110m (361ft) 35°x10° - 65m (213ft) 60°x25° - 35m (115ft) 80°x30° - 25m (82ft) 120°x50° - 18m (59ft) Other angles available	10°x10° - 42m (138ft) 35°x10° - 28m (92ft) 60°x25° - 18m (59ft) 80°x30° - 14m (46ft) 120°x50° - 8m (26ft) Other angles available
Input	60W PoE (4-pair PoE), IEEE 802.3bt	PoE+ IEEE 802.3af	PoE IEEE 802.3af
Beam Shape	Elliptical with HRT (Hot Spot Reduction Technology)	Elliptical with HRT (Hot Spot Reduction Technology)	Elliptical with HRT (Hot Spot Reduction Technology)
Beam Angle System	VARIO Interchangeable Lens System	VARIO Interchangeable Lens System	VARIO Interchangeable Lens System
Consumption	47W	25W	9W
LED type	Platinum Elite SMT LEDs	Platinum Elite SMT LEDs	Platinum Elite SMT LEDs
Number of LEDs	24	12	3
Power Output (luminous flux)	3727lm	1863lm	466lm
Wavelength	White-Light	White-Light	White-Light
IP Rating	IP66	IP66	IP66
Temperature Range	-50° to +50°C (-58 to 122°F)	-50° to +50°C (-58 to 122°F)	-50° to +50°C (-58 to 122°F)
Colour Temperature	6000K~	6000K~	6000K~
Colour Reproduction Index	>70	>70	>70
Colour	Silver	Silver	Silver
Weight	1.65kg (3.6lbs)	950g (2.1lbs)	600g (1.3lbs)
Dimensions	135 x 180 x 68.2mm 5" x 7" x 2.6" approx	100 x 135 x 66mm 4" x 5" x 2.5" approx	75 x 100 x 64mm 3" x 4" x 2.5" approx
Additional Features	LED status indicator Photocell Advanced security settings Manual programming inputs Standard kit includes 10°x10°, 35°x10° and 60°x25° angles Photocell following output and Telemetry control available - Premium versions only	LED status indicator Photocell Advanced security settings Manual programming inputs Standard kit includes 10°x10°, 35°x10° and 60°x25° angles Photocell following output and Telemetry control available - Premium versions only	LED status indicator Photocell Advanced security settings Manual programming inputs Standard kit includes 10°x10°, 35°x10° and 60°x25° angles Photocell following output and Telemetry control available - Premium versions only
Accessories*	VUB Bracket Optional VARIO Remote control	VUB Bracket Optional VARIO Remote control	VUB Bracket Optional VARIO Remote control

* Please see Accessories on Pages 22-23



VARIO2 w16-1



VARIO2 w8-1



VARIO2 w4-1



VARIO2 w2-1

Max Distance	250m (820ft)	180m (591ft)	110m (361ft)	60m (197ft)
Angles and Max Distances	10°x10° - 250m (820ft) 35°x10° - 125m (410ft) 60°x25° - 70m (230ft) 80°x30° - 48m (157ft) 120°x50° - 35m (115ft) Other angles available	10°x10° - 180m (591ft) 35°x10° - 95m (312ft) 60°x25° - 50m (164ft) 80°x30° - 35m (115ft) 120°x50° - 25m (82ft) Other angles available	10°x10° - 110m (361ft) 35°x10° - 65m (213ft) 60°x25° - 35m (115ft) 80°x30° - 25m (82ft) 120°x50° - 18m (59ft) Other angles available	10°x10° - 60m (197ft) 35°x10° - 40m (131ft) 60°x25° - 25m (82ft) 80°x30° - 20m (66ft) 120°x50° - 12m (39ft) Other angles available
Input	24V AC/DC	12-24V AC/DC	12-24V AC/DC	12-24V AC/DC
Beam Shape	Elliptical with HRT (Hot Spot Reduction Technology)	Elliptical with HRT (Hot Spot Reduction Technology)	Elliptical with HRT (Hot Spot Reduction Technology)	Elliptical with HRT (Hot Spot Reduction Technology)
Beam Angle System	VARIO Interchangeable Lens System	VARIO Interchangeable Lens System	VARIO Interchangeable Lens System	VARIO Interchangeable Lens System
Consumption	84W	42W	24W	11W
LED type	Platinum Elite SMT LEDs	Platinum Elite SMT LEDs	Platinum Elite SMT LEDs	Platinum Elite SMT LEDs
Number of LEDs	48	24	12	6
Power Output (luminous flux)	7453lm	3727lm	1863lm	932lm
Wavelength	White-Light	White-Light	White-Light	White-Light
IP Rating	IP66	IP66	IP66	IP66
Temperature Range	-50° to +50°C (-58 to 122°F)	-50° to +50°C (-58 to 122°F)	-50° to +50°C (-58 to 122°F)	-50° to +50°C (-58 to 122°F)
Colour Temperature	6000K ~	6000K ~	6000K ~	6000K ~
Colour Reproduction Index	>70	>70	>70	>70
Colour	Silver	Silver	Silver	Silver
Weight	3.1kg (6.8lbs)	1.65kg (3.6lbs)	950g (2.1lbs)	600g (1.3lbs)
Dimensions	180 x 277 x 75mm 7" x 11" x 2.9" approx	135 x 180 x 68.2mm 5" x 7" x 2.6" approx	100 x 135 x 66mm 4" x 5" x 2.5" approx	75 x 100 x 64mm 3" x 4" x 2.5" approx
Additional Features	LED status indicator Photocell, Photocell following output Telemetry input Advanced security settings Manual programming inputs Standard kit includes 10°x10°, 35°x10° and 60°x25° angles	LED status indicator Photocell, Photocell following output Telemetry input Advanced security settings Manual programming inputs Standard kit includes 10°x10°, 35°x10° and 60°x25° angles	LED status indicator Photocell, Photocell following output Telemetry input Advanced security settings Manual programming inputs Standard kit includes 10°x10°, 35°x10° and 60°x25° angles	LED status indicator Photocell, Photocell following output Telemetry input Advanced security settings Manual programming inputs Standard kit includes 10°x10°, 35°x10° and 60°x25° angles
Accessories*	VUB Bracket Optional VARIO Remote control VARIO PSU	VUB Bracket Optional VARIO Remote control VARIO PSU	VUB Bracket Optional VARIO Remote control VARIO PSU	VUB Bracket Optional VARIO Remote control VARIO PSU

* Please see Accessories on Pages 22-23. ** Distances for surveillance purposes only - NOT for general area illumination.



Vario2 w8-3



Vario2 w4-3



Vario2 w8-2



Vario2 w4-2



Vario2 w2-2

Max Distance	311m (1020ft)	190m (623ft)	254m (833ft)	155m (509ft)	90m (295ft)
Angles and Max Distances**	10°x10° - 311m (1020ft) 35°x10° - 164m (538ft) 60°x25° - 87m (285ft) 80°x30° - 61m (200ft) 120°x50° - 43m (141ft) Other angles available	10°x10° - 190m (623ft) 35°x10° - 112m (367ft) 60°x25° - 61m (200ft) 80°x30° - 43m (141ft) 120°x50° - 31m (102ft) Other angles available	10°x10° - 254m (833ft) 35°x10° - 134m (440ft) 60°x25° - 71m (233ft) 80°x30° - 49m (161ft) 120°x50° - 35m (115ft) Other angles available	10°x10° - 155m (509ft) 35°x10° - 92m (302ft) 60°x25° - 49m (161ft) 80°x30° - 35m (115ft) 120°x50° - 25m (82ft) Other angles available	10°x10° - 90m (295ft) 35°x10° - 56m (184ft) 60°x25° - 35m (115ft) 80°x30° - 28m (92ft) 120°x50° - 17m (56ft) Other angles available
Input	12-24V AC/DC	12-24V AC/DC	12-24V AC/DC	12-24V AC/DC	12-24V AC/DC
Beam Shape	Elliptical with HRT (Hot Spot Reduction Technology)	Elliptical with HRT (Hot Spot Reduction Technology)	Elliptical with HRT (Hot Spot Reduction Technology)	Elliptical with HRT (Hot Spot Reduction Technology)	Elliptical with HRT (Hot Spot Reduction Technology)
Beam Angle System	VARIO Interchangeable Lens System	VARIO Interchangeable Lens System	VARIO Interchangeable Lens System	VARIO Interchangeable Lens System	VARIO Interchangeable Lens System
Consumption	126W	72W	84W	48W	22W
LED type	Platinum Elite SMT LEDs	Platinum Elite SMT LEDs	Platinum Elite SMT LEDs	Platinum Elite SMT LEDs	Platinum Elite SMT LEDs
Number of LEDs	72	36	48	24	12
Power Output (luminous flux)	11181lm	5589lm	7454lm	3726lm	1864lm
Wavelength	White-Light	White-Light	White-Light	White-Light	White-Light
IP Rating	IP66	IP66	IP66	IP66	IP66
Temperature Range	-50° to +50°C (-58 to 122°F)	-50° to +50°C (-58 to 122°F)	-50° to +50°C (-58 to 122°F)	-50° to +50°C (-58 to 122°F)	-50° to +50°C (-58 to 122°F)
Colour Temperature	6000K ~	6000K ~	6000K ~	6000K ~	6000K ~
Colour Reproduction Index	>70	>70	>70	>70	>70
Colour	Silver	Silver	Silver	Silver	Silver
Weight	6kg (13.2lbs)	3.75kg (8.3lbs)	4.5kg (9.9lbs)	2.25kg (5lbs)	1.5kg (3.3lbs)
Dimensions	423 x 226 x 68mm 17" x 9" x 3" approx	318 x 182 x 67mm 12.5" x 7" x 3" approx	279 x 223 x 68mm 11" x 9" x 3" approx	209 x 178 x 67mm 8" x 7" x 3" approx	159 x 144 x 63mm 6" x 5" x 2.5" approx
Additional Features	LED status indicator Photocell, Photocell following output Telemetry input Advanced security settings Manual programming inputs Standard kit includes 10°x10°, 35°x10° and 60°x25° angles	LED status indicator Photocell, Photocell following output Telemetry input Advanced security settings Manual programming inputs Standard kit includes 10°x10°, 35°x10° and 60°x25° angles	LED status indicator Photocell, Photocell following output Telemetry input Advanced security settings Manual programming inputs Standard kit includes 10°x10°, 35°x10° and 60°x25° angles	LED status indicator Photocell, Photocell following output Telemetry input Advanced security settings Manual programming inputs Standard kit includes 10°x10°, 35°x10° and 60°x25° angles	LED status indicator Photocell, Photocell following output Telemetry input Advanced security settings Manual programming inputs Standard kit includes 10°x10°, 35°x10° and 60°x25° angles
Accessories*	VUB Bracket Optional VARIO Remote control VARIO PSU	VUB Bracket Optional VARIO Remote control VARIO PSU	VUB Bracket Optional VARIO Remote control VARIO PSU	VUB Bracket Optional VARIO Remote control VARIO PSU	VUB Bracket Optional VARIO Remote control VARIO PSU

* Please see Accessories on Pages 22-23. ** Distances for surveillance purposes only - NOT for general area illumination



VARIO2
PANORAMIC ULTRA w8-3



VARIO2
PANORAMIC ULTRA w4-3



VARIO2 EXTREME w16



VARIO2 EXTREME w8

Max Distance	140m (459ft) at 180°	89m (292ft) at 180°	250m (820ft)	180m (591ft)
Angles	60°-180° x 10°	60°-180° x 10°	10°x10° - 250m (820ft) 35°x10° - 125m (410ft) 60°x25° - 70m (230ft) 80°x30° - 48m (157ft) 120°x50° - 35m (115ft) Other angles available	10°x10° - 180m (591ft) 35°x10° - 95m (312ft) 60°x25° - 50m (164ft) 80°x30° - 35m (115ft) 120°x50° - 25m (82ft) Other angles available
Input	12-24V AC/DC	12-24V AC/DC	24V AC/DC	24V AC/DC
Beam Shape	Elliptical with HRT (Hot Spot Reduction Technology)	Elliptical with HRT (Hot Spot Reduction Technology)	Elliptical with HRT (Hot spot Reduction Technology)	Elliptical with HRT (Hot spot Reduction Technology)
Beam Angle System	VARIO Interchangeable Lens System	VARIO Interchangeable Lens System	VARIO Interchangeable Lens System	VARIO Interchangeable Lens System
Consumption	126W Max	126W Max	84W	42W
LED type	Platinum Elite SMT LEDs	Platinum Elite SMT LEDs	Platinum Elite SMT LEDs	Platinum Elite SMT LEDs
Number of LEDs	72	36	48	24
WL Power Output (luminous flux)	11181lm	5589lm	7453lm	3727lm
Wavelength	White Light	White Light	White-Light	White-Light
Environmental Rating	IP66	IP66	IP67, IK09, Extreme Salinity, Extreme Humidity, Extreme Vibration	IP67, IK09, Extreme Salinity, Extreme Humidity, Extreme Vibration
Temperature Range	-50° to +50°C (-58 to 122°F)	-50° to +50°C (-58 to 122°F)	-50° to +75°C (-58° to 167°F)	-50° to +75°C (-58° to 167°F)
Colour Temperature	6000K~	6000K~	6000K~	6000K~
Colour Reproduction Index	>70	>70	>70	>70
Colour	Silver	Silver	Silver	Silver
Weight	6kg (13.2lbs)	3.75kg (8.3lbs)	3.1kg(6.8lbs)	1.65kg (3.6lbs)
Dimensions	423 x 226 x 68mm (17" x 9" x 3" approx.)	318 x 182 x 67mm (12.5" x 7" x 3" approx.)	180 x 277 x 75mm 7" x 11" x 2.9" approx	135 x 180 x 68.2mm 5" x 7" x 2.6" approx
Additional Features	LED status indicator Photocell, Photocell following output Telemetry input Advanced security settings Manual programming inputs	LED status indicator Photocell, Photocell following output Telemetry input Advanced security settings Manual programming inputs	LED status indicator Photocell Photocell following output Telemetry input Advanced Security Settings Manual Programming Inputs Standard kit includes 10°x10°, 35°x10° and 60°x25° angles	LED status indicator Photocell Photocell following output Telemetry input Advanced Security Settings Manual Programming Inputs Standard kit includes 10°x10°, 35°x10° and 60°x25° angles
Accessories*	VUB Bracket Optional VARIO Remote control VARIO PSU	VUB Bracket Optional VARIO Remote control VARIO PSU	VUB Bracket Optional VARIO Remote control VARIO PSU	VUB Bracket Optional VARIO Remote control VARIO PSU

* Please see Accessories on Pages 22-23. ** Distances for surveillance purposes only - NOT for general area illumination



Vario2 iP HYBRID 16



Vario2 iP HYBRID 8



Vario2 iP HYBRID 6



Vario2 iP HYBRID 4

Max Distance	450m (1476ft) - DC supply 378m (1240ft) - PoE supply	290m (951ft)	180m (591ft)	130m (427ft)
Angles and Max Distances	10°x10° - 450m (1476ft) IR and 195m (640ft) WL 35°x10° - 225m (738ft) IR and 95m (312ft) WL 60°x25° - 122m (336ft) IR and 55m (180ft) WL 80°x30° - 95m (312ft) IR and 38m (125ft) WL 120°x50° - 59m (194ft) IR and 28m (92ft) WL Other angles available	10°x10° - 290m (951ft) IR and 144m (472ft) WL 35°x10° - 150m (492ft) IR and 76m (249ft) WL 60°x25° - 86m (282ft) IR and 40m (131ft) WL 80°x30° - 63m (207ft) IR and 30m (98ft) WL 120°x50° - 41m (135ft) IR and 20m (66ft) WL Other angles available	10°x10° - 180m (591ft) IR and 88m (289ft) WL 35°x10° - 108m (354ft) IR and 52m (171ft) WL 60°x25° - 63m (207ft) IR and 28m (92ft) WL 80°x30° - 45m (148ft) IR and 20m (66ft) WL 120°x50° - 27m (89ft) IR and 14m (46ft) WL Other angles available	10°x10° - 130m (427ft) IR and 70m (230ft) WL 35°x10° - 70m (230ft) IR and 42m (138ft) WL 60°x25° - 49m (161ft) IR and 22m (72ft) WL 80°x30° - 32m (105ft) IR and 16m (52ft) WL 120°x50° - 22m (72ft) IR and 12m (39ft) WL Other angles available
Input	90W PoE (4-pair PoE) IEEE 802.3bt or 24V DC	60W PoE (4-pair PoE) IEEE 802.3bt or 24V DC	PoE+ IEEE 802.3at or 24V DC	PoE+ IEEE 802.3at or 24V DC
Beam Shape	Elliptical with HRT (Hot spot Reduction Technology)	Elliptical with HRT (Hot spot Reduction Technology)	Elliptical with HRT (Hot spot Reduction Technology)	Elliptical with HRT (Hot spot Reduction Technology)
Beam Angle System	VARIO Interchangeable Lens System	VARIO Interchangeable Lens System	VARIO Interchangeable Lens System	VARIO Interchangeable Lens System
Consumption	77W - DC supply 71W - PoE supply	43W	22W	15W
LED type	Platinum Elite twin-core SMT LEDs	Platinum Elite twin-core SMT LEDs	Platinum Elite twin-core SMT LEDs	Platinum Elite SMT LEDs
Number of LEDs	24 x Infra-Red, 24 x White-Light	12 x Infra-Red, 12 x White-Light	6 x Infra-Red, 6 x White-Light	6 x Infra-Red, 3 x White-Light
WL Power output (luminous flux)	5692lm	2981lm	1490lm	745lm
Wavelength	850nm and White-Light (940nm options available)	850nm and White-Light (940nm options available)	850nm and White-Light	850nm and White-Light (940nm options available)
IP Rating	IP66	IP66	IP66	IP66
Temperature Range	-50 to +50°C (-58 to 122°F)	-50 to +50°C (-58 to 122°F)	-50 to +50°C (-58 to 122°F)	-50 to +50°C (-58 to 122°F)
Colour Temperature (White-Light)	6000K~	6000K~	6000K~	6000K~
Colour Reproduction Index (White-Light)	>70	>70	>70	>70
Colour	Black	Black	Black	Black
Weight	3.16kg (7lbs)	1.65kg (3.6lbs)	950g (2.1lbs)	950g (2.1lbs)
Dimensions	180 x 277 x 75mm (7" x 11" x 2.9" approx.)	135 x 180 x 68.2mm (5 x 7 x 2.6" approx)	100 x 135 x 66mm (4" x 5" x 2.5" approx.)	100 x 135 x 66mm (4" x 5" x 2.5" approx.)
Additional Features	VARIO IP Web Interface. Power Control, Deterrent in basic user settings. Control individual lights or groups. Individual control for IR & WL Standard kit includes 10°x10°, 35°x10° and 60°x25° angles. Timer, optional soft start, selectable input / output, advanced set-up and diagnostics	VARIO IP Web Interface. Power Control, Deterrent in basic user settings. Control individual lights or groups. Individual control for IR & WL Standard kit includes 10°x10°, 35°x10° and 60°x25° angles. Timer, optional soft start, selectable input / output, advanced set-up and diagnostics	VARIO IP Web Interface. Power Control, Deterrent in basic user settings. Control individual lights or groups. Individual control for IR & WL Standard kit includes 10°x10°, 35°x10° and 60°x25° angles. Timer, optional soft start, selectable input / output, advanced set-up and diagnostics	VARIO IP Web Interface. Power Control, Deterrent in basic user settings. Control individual lights or groups. Individual control for IR & WL Standard kit includes 10°x10°, 35°x10° and 60°x25° angles. Timer, optional soft start, selectable input / output, advanced set-up and diagnostics
Accessories*	A range of integrations available VUB Bracket VARIO PSU	A range of integrations available VUB Bracket VARIO PSU	A range of integrations available VUB Bracket VARIO PSU	A range of integrations available VUB Bracket VARIO PSU



VARIO2 HYBRID 16



VARIO2 HYBRID 8



VARIO2 HYBRID 6



VARIO2 HYBRID 4

Max Distance	450m (1476ft)	290m (951ft)	180m (591ft)	130m (427ft)
Angles and Max Distances	10°x10° - 450m (1476ft) IR and 195m (640ft) WL 35°x10° - 225m (738ft) IR and 95m (312ft) WL 60°x25° - 122m (400ft) IR and 55m (180ft) WL 80°x30° - 95m (312ft) IR and 38m (125ft) WL 120°x50° - 59m (194ft) IR and 28m (92ft) WL Other angles available	10°x10° - 290m (951ft) IR and 144m (472ft) WL 35°x10° - 150m (492ft) IR and 76m (249ft) WL 60°x25° - 86m (282ft) IR and 40m (131ft) WL 80°x30° - 63m (207ft) IR and 30m (98ft) WL 120°x50° - 41m (135ft) IR and 20m (66ft) WL Other angles available	10°x10° - 180m (591ft) IR and 88m (289ft) WL 35°x10° - 108m (354ft) IR and 52m (171ft) WL 60°x25° - 63m (207ft) IR and 28m (92ft) WL 80°x30° - 45m (148ft) IR and 20m (66ft) WL 120°x50° - 27m (89ft) IR and 14m (46ft) WL Other angles available	10°x10° - 130m (427ft) IR and 70m (230ft) WL 35°x10° - 70m (230ft) IR and 42m (138ft) WL 60°x25° - 49m (161ft) IR and 22m (72ft) WL 80°x30° - 32m (105ft) IR and 16m (52ft) WL 120°x50° - 22m (72ft) IR and 12m (39ft) WL Other angles available
Input	24V DC	24V DC	24V DC	24V DC
Beam Shape	Elliptical with HRT (Hot spot Reduction Technology)	Elliptical with HRT (Hot spot Reduction Technology)	Elliptical with HRT (Hot spot Reduction Technology)	Elliptical with HRT (Hot spot Reduction Technology)
Beam Angle System	VARIO Interchangeable Lens System	VARIO Interchangeable Lens System	VARIO Interchangeable Lens System	VARIO Interchangeable Lens System
Consumption	78W	40W	21W	13W
LED type	Platinum Elite twin-core SMT LEDs	Platinum Elite twin-core SMT LEDs	Platinum Elite twin-core SMT LEDs	Platinum Elite SMT LEDs
Number of LEDs	24 x Infra-Red, 24 x White-Light	12 x Infra-Red, 12 x White-Light	6 x Infra-Red, 6 x White-Light	6 x Infra-Red, 3 x White-Light
WL Power output (luminous flux)	5692lm	2981lm	1490lm	745lm
Wavelength	850nm and White-Light (940nm options available)	850nm and White-Light (940nm options available)	850nm and White-Light	850nm and White-Light (940nm options available)
IP Rating	IP66	IP66	IP66	IP66
Temperature Range	-50 to +50°C (-58 to 122°F)	-50° to +50°C (-58 to 122°F)	-50 to +50°C (-58 to 122°F)	-50 to +50°C (-58 to 122°F)
Colour Temperature (White-Light)	6000K~	6000K~	6000K~	6000K~
Colour Reproduction Index (White-Light)	>70	>70	>70	>70
Colour	Black	Black	Black	Black
Weight	3.1kg (6.8lbs)	1.65kg (3.6lbs)	950g (2.1lbs)	950g (2.1lbs)
Dimensions	180 x 277 x 75mm (7" x 11" x 2.9" approx)	135 x 180 x 68.2mm (5 x 7 x 2.6" approx)	100 x 135 x 66mm (4" x 5" x 2.5" approx.)	100 x 135 x 66mm (4" x 5" x 2.5" approx.)
Additional Features	LED status indicator Photocell Photocell following output Telemetry input to trigger WL Standard kit includes 10°x10°, 35°x10° and 60°x25° angles	LED status indicator Photocell Photocell following output Telemetry input to trigger WL Standard kit includes 10°x10°, 35°x10° and 60°x25° angles	LED status indicator Photocell Photocell following output Telemetry input to trigger WL Standard kit includes 10°x10°, 35°x10° and 60°x25° angles	LED status indicator Photocell Photocell following output Telemetry input to trigger WL Standard kit includes 10°x10°, 35°x10° and 60°x25° angles
Accessories*	VUB Bracket Optional VARIO Remote control VARIO PSU	VUB Bracket Optional VARIO Remote control VARIO PSU	VUB Bracket Optional VARIO Remote control VARIO PSU	VUB Bracket Optional VARIO Remote control VARIO PSU

* Please see Accessories on Pages 22-23



URBAN-X MINI



URBAN-X PRO



URBAN PLUS

Input	220-240V AC	220-240V AC 110-277V AC (80W variants)	186-240V AC
Beam Angle Options	Perimeter/Pathway (two options) General Area Other options available	Perimeter/Pathway (two options) General Area Other options available	Perimeter/Pathway (two options) General Area Other options available
Beam Angle System	Fixed	Fixed	Fixed
Consumption	20W, 30W or 40W variants	40W, 60W, 80W or 100W variants	120W, 150W, or 170W variants
LED type	Platinum Multi-Core SMT LEDs	Platinum SMT LEDs	Platinum SMT LEDs
Number of LEDs	4	24 (40W & 60W variants) 36 (80W & 100W variants)	68
Power Output (Lumens)	20W - 2,200lm 30W - 3,300lm 40W - 4,400lm	40W - 5,600lm 60W - 8,400lm 80W - 11,200lm 100W - 14,000lm	120W - 17,000lm 150W - 21,000lm 170W - 24,000lm
Wavelength	White-Light	White-Light	White-Light
IP Rating	IP66	IP66	IP65
Temperature Range	-30 to +60°C (-22 to 140°F)	-30°C to +60°C (-22°F to 140°F) with automatic thermal control (-30°C to +40°C (-22°F to 104°F) for 100W variants)	-30°C to +40°C (-22°F to 104°F) with automatic thermal control
Colour Temperature	4000K Other options available	4000K Other options available	4000K Other options available
Colour	Silver RAL9006 Other options available	Silver RAL9006 Other options available	Silver RAL 2900 Other options available
Weight	2Kg (4.4lbs)	2Kg (4.4lbs)	8.5Kg (18.7lbs)
Dimensions	160 x 444 x 58.5mm (6.5" x 17.5" x 2.5")	485 x 239 x 220mm (19.1" x 9.4" x 8.7")	691 x 276 x 304mm (27" x 11" x 8")
Additional Features	5 LED Driver Programs available plus Custom (user specified) Control Options: Integrated Photocell DALI 1 Piece lightweight design for easy installation	5 LED Driver Programs available plus Custom (user specified) Control Options: Integrated Photocell DALI 2 Piece lightweight design for easy installation	5 LED Driver Programs available plus Custom (user specified) Control Options: Integrated Photocell DALI Zhaga Socket 12 Piece lightweight design for easy installation
Accessories	Wall Mount Bracket Pole Mount Bracket	Wall Mount Bracket	

PULSED FOR TRANSPORT APPLICATIONS



PULSESTAR i96



PULSESTAR i72



PULSESTAR i48



PULSESTAR i32



PULSESTAR i24

Lighting Drive Power (pulsed)	980W	740W	500W	340W	260W
Angles	10°x10° 20°x10° 35°x10° Other angles available	10°x10° 20°x10° 35°x10° Other angles available	10°x10° 20°x10° 35°x10° Other angles available	10°x10° 20°x10° 35°x10° Other angles available	10°x10° 20°x10° 35°x10° Other angles available
Input	Universal 100-230V AC - comes with PSU (see details below) (24V DC options available - contact Raytec)	Universal 100-230V AC - comes with PSU (see details below) (24V DC options available - contact Raytec)	Universal 100-230V AC - comes with PSU (see details below) (24V DC options available - contact Raytec)	Universal 100-230V AC - comes with PSU (see details below) (24V DC options available - contact Raytec)	Universal 100-230V AC - comes with PSU (see details below) (24V DC options available - contact Raytec)
Beam Shape	Elliptical with HRT (Hot Spot Reduction Technology)	Elliptical with HRT (Hot Spot Reduction Technology)	Elliptical with HRT (Hot Spot Reduction Technology)	Elliptical with HRT (Hot Spot Reduction Technology)	Elliptical with HRT (Hot Spot Reduction Technology)
Beam Angle System	VARIO Interchangeable Lens System	VARIO Interchangeable Lens System	VARIO Interchangeable Lens System	VARIO Interchangeable Lens System	VARIO Interchangeable Lens System
Consumption	49W	37W	25W	17W	13W
LED type	Platinum Elite twin-core SMT LEDs	Platinum Elite twin-core SMT LEDs	Platinum Elite twin-core SMT LEDs	Platinum Elite twin-core SMT LEDs	Platinum Elite twin-core SMT LEDs
Number of LEDs	96	72	48	32	24
Typical Pulse Width	1 ms	1 ms	1 ms	1 ms	1 ms
Trigger Input	3-24V opto-isolated	3-24V opto-isolated	3-24V opto-isolated	3-24V opto-isolated	3-24V opto-isolated
12V DC Power Output	1A	1A	1A	1A	1A
Control / Communication	Ethernet	Ethernet	Ethernet	Ethernet	Ethernet
Wavelength	850nm (940nm options available)	850nm (940nm options available)	850nm (940nm options available)	850nm (940nm options available)	850nm (940nm options available)
IP Rating	IP66	IP66	IP66	IP66	IP66
Temperature Range	-20° to +45°C (-4 to 113°F)	-20° to +45°C (-4 to 113°F)	-20° to +45°C (-4 to 113°F)	-20° to +45°C (-4 to 113°F)	-20° to +45°C (-4 to 113°F)
Colour	Black	Black	Black	Black	Black
Weight	2 x 4.5kg (9.9lbs)	6kg (13.2lbs)	4.5kg (9.9lbs)	2.25kg (5 lbs)	1.65kg (3.6lbs)
Dimensions	2 off 280 x 223 x 68mm 11" x 9" x 3" approx	423 x 226 x 68mm 17" x 9" x 3" approx	280 x 223 x 68mm 11" x 9" x 3" approx	209 x 178 x 67mm 8" x 7" x 3" approx	135 x 180 x 68mm 5" x 7" x 2.6" approx

External Power Supply (included)

Input	Universal 100-230V AC auto-sensing	Universal 100-230V AC auto-sensing	Universal 100-230V AC auto-sensing	Universal 100-230V AC auto-sensing	Universal 100-230V AC auto-sensing
Output	49W	37W	25W	17W	13W
Weights	2.3kg (5.1lbs)	2.3kg (5.1lbs)	2.0kg (4.4lbs)	1.7kg (3.75lbs)	1.7kg (3.75lbs)
Dimensions	181 x 287 x 107mm 8" x 12" x 4"	181 x 287 x 107mm 8" x 12" x 4"	181 x 287 x 107mm 8" x 12" x 4"	181 x 287 x 107mm 8" x 12" x 4"	181 x 287 x 107mm 8" x 12" x 4"

PULSED LIGHTING

PULSED FOR TRANSPORT APPLICATIONS



PULSESTAR w96



PULSESTAR w72



PULSESTAR w48



PULSESTAR w32



PULSESTAR w24

Lighting Drive Power (pulsed)	440W	330W	220W	150W	110W
Angles	10°x10° 20°x10° 35°x10° Other angles available	10°x10° 20°x10° 35°x10° Other angles available	10°x10° 20°x10° 35°x10° Other angles available	10°x10° 20°x10° 35°x10° Other angles available	10°x10° 20°x10° 35°x10° Other angles available
Input	Universal 100-230V AC - comes with PSU (see details below) (24V DC options available - contact Raytec)	Universal 100-230V AC - comes with PSU (see details below) (24V DC options available - contact Raytec)	Universal 100-230V AC - comes with PSU (see details below) (24V DC options available - contact Raytec)	Universal 100-230V AC - comes with PSU (see details below) (24V DC options available - contact Raytec)	Universal 100-230V AC - comes with PSU (see details below) (24V DC options available - contact Raytec)
Beam Shape	Elliptical with HRT (Hot Spot Reduction Technology)	Elliptical with HRT (Hot Spot Reduction Technology)	Elliptical with HRT (Hot Spot Reduction Technology)	Elliptical with HRT (Hot Spot Reduction Technology)	Elliptical with HRT (Hot Spot Reduction Technology)
Beam Angle System	VARIO Interchangeable Lens System	VARIO Interchangeable Lens System	VARIO Interchangeable Lens System	VARIO Interchangeable Lens System	VARIO Interchangeable Lens System
Consumption	44W	33W	22W	15W	11W
LED type	Platinum Elite SMT LEDs	Platinum Elite SMT LEDs	Platinum Elite SMT LEDs	Platinum Elite SMT LEDs	Platinum Elite SMT LEDs
Number of LEDs	96	72	48	32	24
Typical Pulse Width	2 ms	2 ms	2 ms	2 ms	2 ms
Trigger Input	3-24V opto-isolated	3-24V opto-isolated	3-24V opto-isolated	3-24V opto-isolated	3-24V opto-isolated
12V DC Power Output	1A	1A	1A	1A	1A
Control / Communication	Ethernet	Ethernet	Ethernet	Ethernet	Ethernet
Wavelength	White-Light	White-Light	White-Light	White-Light	White-Light
IP Rating	IP66	IP66	IP66	IP66	IP66
Temperature Range	-20° to +45°C (-4 to 113°F)	-20° to +45°C (-4 to 113°F)	-20° to +45°C (-4 to 113°F)	-20° to +45°C (-4 to 113°F)	-20° to +45°C (-4 to 113°F)
Colour	Silver	Silver	Silver	Silver	Silver
Weight	2 x 4.5kg (9.9lbs)	6kg (13.2lbs)	4.5kg (9.9lbs)	2.25kg (5 lbs)	1.65kg (3.6lbs)
Dimensions	2 off 280 x 223 x 68mm 11" x 9" x 3" approx	423 x 226 x 68mm 17" x 9" x 3" approx	280 x 223 x 68mm 11" x 9" x 3" approx	209 x 178 x 67mm 8" x 7" x 3" approx	135 x 180 x 68mm 5" x 7" x 2.6" approx

External Power Supply (included)

Input	Universal 100-230V AC auto-sensing	Universal 100-230V AC auto-sensing	Universal 100-230V AC auto-sensing	Universal 100-230V AC auto-sensing	Universal 100-230V AC auto-sensing
Output	49W	37W	25W	17W	13W
Weights	2.3kg (5.1lbs)	2.3kg (5.1lbs)	2.0kg (4.4lbs)	1.7kg (3.75lbs)	1.7kg (3.75lbs)
Dimensions	181 x 287 x 107mm 8" x 12" x 4"	181 x 287 x 107mm 8" x 12" x 4"	181 x 287 x 107mm 8" x 12" x 4"	181 x 287 x 107mm 8" x 12" x 4"	181 x 287 x 107mm 8" x 12" x 4"

PULSED LIGHTING

PULSED FOR
TRANSPORT APPLICATIONS



PULSESTAR VTR6



PULSESTAR VTR4



PULSESTAR VTS20



PULSESTAR VCT6

Lighting Drive Power (pulsed)	4.5kW Pulsed	3.4kW Pulsed	1.0kW Pulsed	0.5kW Pulsed
Angles	14°x14° 28°x28° 50°x50°	14°x14° 28°x28° 50°x50°	14°x14° 28°x28° 50°x50°	14°x14° 28°x28° 50°x50°
Input	24V DC ± 5%	24V DC ± 5%	24V DC ± 5%	12-24V DC
Beam Shape	Circular	Circular	Circular	Circular
Beam Angle System	Fixed	Fixed	Fixed	Fixed
Consumption	90W	68W	20W	15W
LED type	Platinum Elite twin-core SMT LEDs	Platinum Elite twin-core SMT LEDs	Platinum Elite twin-core SMT LEDs	Platinum Elite twin-core SMT LEDs
Number of LEDs	324	216	80	45
Typical Pulse Width	1 ms	1 ms	2 ms	1 ms
Trigger Input	5V to 24V opto-isolated	5V to 24V opto-isolated	5V to 24V opto-isolated	5V to 24V opto-isolated
Control / Communication	Ethernet	Ethernet	Ethernet	Ethernet
Cable	Optional detachable cable - contact Raytec	Optional detachable cable - contact Raytec	2m pre-wired	2m pre-wired
Wavelength	850nm	850nm	850nm	850nm
IP Rating	IP66	IP66	IP66	IP65
Temperature Range	-20° to +50°C (-4 to 122°F)	-20° to +50°C (-4 to 122°F)	-20° to +50°C (-4 to 122°F)	-20° to +55°C (-4 to 131°F)
Colour	Black	Black	Black	Black
Weight	6.6kg (14.6lbs)	5.4kg (11.9lbs)	2.7kg (6.0lbs)	1.0kg (2.2lbs)
Dimensions	444 x 431 x 56mm (17.5" x 17" x 2.2" approx)	334 x 431 x 56mm (13.1" x 17" x 2.2" approx)	180 x 248 x 75mm (7" x 9.8 x 3" approx)	230 x 117 x 60.5mm (9" x 4.6" x 2.4" approx)
Accessories	VTR6 mounting bracket Detach cable	VTR4 mounting bracket Detach cable	U bracket included	

White-Light options available on all products above.



Vario2 VLK i6



Vario2 VLK i4



Vario2 VLK w4



Vario2 VLK HYBRID

Max Distance	282m (925ft)	220m (722ft)	155m (509ft)	254m (833ft)
Angles and Max Distances	10°x10° - 282m (925ft) 35°x10° - 169m (554ft) 60°x25° - 99m (325ft) 80°x30° - 71m (233ft) 120°x50° - 42m (138ft) Other angles available	10°x10° - 220m (722ft) 35°x10° - 120m (394ft) 60°x25° - 76m (249ft) 80°x30° - 51m (167ft) 120°x50° - 34m (112ft) Other angles available	10°x10° - 155m (509ft) 35°x10° - 92m (302ft) 60°x25° - 49m (161ft) 80°x30° - 35m (115ft) 120°x50° - 25m (82ft) Other angles available	10°x10° - 254m (833ft) IR and 124m (407ft) WL 35°x10° - 152m (499ft) IR and 73m (240ft) WL 60°x25° - 89m (292ft) IR and 39m (128ft) WL 80°x30° - 63m (207ft) IR and 28m (92ft) WL 120°x50° - 38m (125ft) IR and 20m (66ft) WL Other angles available
Input	15-24V AC/DC	15-24V AC/DC	15-24V AC/DC	24V DC
Beam Shape	Elliptical with HRT (Hot spot Reduction Technology)	Elliptical with HRT (Hot spot Reduction Technology)	Elliptical with HRT (Hot spot Reduction Technology)	Elliptical with HRT (Hot spot Reduction Technology)
Beam Angle System	VARIO Interchangeable Lens System	VARIO Interchangeable Lens System	VARIO Interchangeable Lens System	VARIO Interchangeable Lens System
Consumption	61W (inc approx camera consumption) 25W per LED panel	37W (inc approx camera consumption) 13W per LED panel	59W (inc approx camera consumption) 24W per LED panel	53W (inc approx camera consumption) 21W per LED panel
LED type	Platinum Elite SMT LEDs	Platinum Elite SMT LEDs	Platinum Elite SMT LEDs	Platinum Elite SMT LEDs
Number of LEDs	24	18	24	12 x Infra-Red, 12 x White-Light
WL Power output (luminous flux)	N/A	N/A	3726lm	2980lm
Wavelength	850nm	850nm (940nm options available)	White-Light	850nm and White-Light
IP Rating	IP66	IP66	IP66	IP66
Temperature Range	-50 to +50°C (-58 to 122°F)	-50 to +50°C (-58 to 122°F)	-50 to +50°C (-58 to 122°F)	-50 to +50°C (-58 to 122°F)
Colour Temperature (White-Light)	N/A	N/A	6000K~	6000K~
Colour Reproduction Index (White-Light)	N/A	N/A	>70	>70
Colour	Black	Black	Black	Black
Weight	5.4kg (12lbs)	5.4kg (12lbs)	5.4kg (12lbs)	5.4kg (12lbs)
Dimensions	336 x 302 x 173mm (13.2" x 11.9" x 6.8" approx)	336 x 302 x 173mm (13.2" x 11.9" x 6.8" approx)	336 x 302 x 173mm (13.2" x 11.9" x 6.8" approx)	336 x 302 x 173mm (13.2" x 11.9" x 6.8" approx)
Internal Camera Space Dimensions	Top space: 224.5 x 61 x 91.5mm (9" x 2.5" x 3.5" Bottom space: 200.1 x 56.6 x 74.5mm (8" x 2.5" x 3") or 224.5 x 48 x 74.5mm (9" x2" x3")	Top space: 224.5 x 61 x 91.5mm (9" x 2.5" x 3.5" Bottom space: 200.1 x 56.6 x 74.5mm (8" x 2.5" x 3") or 224.5 x 48 x 74.5mm (9" x2" x3")	Top space: 224.5 x 61 x 91.5mm (9" x 2.5" x 3.5" Bottom space: 200.1 x 56.6 x 74.5mm (8" x 2.5" x 3") or 224.5 x 48 x 74.5mm (9" x2" x3")	Top space: 224.5 x 61 x 91.5mm (9" x 2.5" x 3.5" Bottom space: 200.1 x 56.6 x 74.5mm (8" x 2.5" x 3") or 224.5 x 48 x 74.5mm (9" x2" x3")
Additional Features	Full lighting system with camera housing Accommodates up to 2 cameras : IP or Analogue Pre-wired and cable managed bracket Standard kit includes 10°x10°, 35°x10° and 60°x25° angles	Full lighting system with camera housing Accommodates up to 2 cameras : IP or Analogue Pre-wired and cable managed bracket Standard kit includes 10°x10°, 35°x10° and 60°x25° angles	Full lighting system with camera housing Accommodates up to 2 cameras : IP or Analogue Pre-wired and cable managed bracket Standard kit includes 10°x10°, 35°x10° and 60°x25° angles	Full lighting system with camera housing Accommodates up to 2 cameras : IP or Analogue Pre-wired and cable managed bracket Standard kit includes 10°x10°, 35°x10° and 60°x25° angles
Accessories*	Optional VARIO Remote control VARIO PSU	Optional VARIO Remote control VARIO PSU	Optional VARIO Remote control VARIO PSU	Optional VARIO Remote control VARIO PSU



SPARTAN FLOOD FL48 IR



SPARTAN FLOOD Emergency FL48 IR



SPARTAN FLOOD FL24 IR



SPARTAN FLOOD Emergency FL24 IR



SPARTAN FLOOD BL24 IR



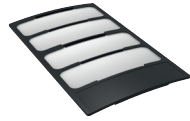
SPARTAN FLOOD Emergency BL24 IR

Certification	ATEX, IEC Ex and UKEX rated for Zone 1 and Zone 2 Gas and Dust CID2 & ABS	ATEX, IEC Ex and UKEX rated for Zone 1 and Zone 2 Gas and Dust CID2 & ABS	ATEX, IEC Ex and UKEX rated for Zone 1 and Zone 2 Gas and Dust CID2 & ABS	ATEX, IEC Ex and UKEX rated for Zone 1 and Zone 2 Gas and Dust CID2 & ABS	ATEX, IEC Ex and UKEX rated for Zone 1 and Zone 2 Gas and Dust CID2 & ABS	ATEX, IEC Ex and UKEX rated for Zone 1 and Zone 2 Gas and Dust CID2 & ABS
Beam Angles	10°x10° - 459m (1,506ft) 35°x10° - 224m (735ft) 60°x25° - 160m (525ft) 80°x30° - 103m (338ft) 120°x50° - 69m (226ft) + 30, 50 and 120° circular options	10°x10° - 459m (1,506ft) 35°x10° - 224m (735ft) 60°x25° - 160m (525ft) 80°x30° - 103m (338ft) 120°x50° - 69m (226ft) + 30, 50 and 120° circular options	10°x10° - 325m (1,066ft) 35°x10° - 158m (518ft) 60°x25° - 113m (371ft) 80°x30° - 73m (240ft) 120°x50° - 49m (161ft) + 30, 50 and 120° circular options	10°x10° - 325m (1,066ft) 35°x10° - 158m (518ft) 60°x25° - 113m (371ft) 80°x30° - 73m (240ft) 120°x50° - 49m (161ft) + 30, 50 and 120° circular options	10°x10° - 325m (1,066ft) 35°x10° - 158m (518ft) 60°x25° - 113m (371ft) 80°x30° - 73m (240ft) 120°x50° - 49m (161ft) + 30, 50 and 120° circular options	10°x10° - 325m (1,066ft) 35°x10° - 158m (518ft) 60°x25° - 113m (371ft) 80°x30° - 73m (240ft) 120°x50° - 49m (161ft) + 30, 50 and 120° circular options
Input	110-254V 50/60Hz AC only Low voltage option also available.	110-254V 50/60Hz AC only	110-254V 50/60Hz AC only Low voltage option also available.	110-254V 50/60Hz AC only	110-254V 50/60Hz AC only Low voltage option also available.	110-254V 50/60Hz AC only
Beam Shape	Elliptical or Circular	Elliptical or Circular	Elliptical or Circular	Elliptical or Circular	Elliptical or Circular	Elliptical or Circular
Beam Angle System	VARIO interchangeable lens system (elliptical) / Fixed (circular)	VARIO interchangeable lens system (elliptical) / Fixed (circular)	VARIO interchangeable lens system (elliptical) / Fixed (circular)	VARIO interchangeable lens system (elliptical) / Fixed (circular)	VARIO interchangeable lens system (elliptical) / Fixed (circular)	VARIO interchangeable lens system (elliptical) / Fixed (circular)
Consumption	136W	139W	68W	71W	20W	24W
LED type	Platinum Elite SMT LEDs	Platinum Elite SMT LEDs	Platinum Elite SMT LEDs	Platinum Elite SMT LEDs	Platinum Elite SMT LEDs	Platinum Elite SMT LEDs
Number of LEDs	48	48	24	24	24	24
Wavelength	850nm	850nm	850nm	850nm	850nm	850nm
IP Rating	IP66 and IP67	IP66 and IP67	IP66 and IP67	IP66 and IP67	IP66 and IP67	IP66 and IP67
Temperature Range	-50°C to +55°C (-58°F to 131°F)	-20°C to +55°C (-4°F to 131°F)	-50°C to +55°C (-58°F to 131°F)	-20°C to +55°C (-4°F to 131°F)	-52°C to +55°C (-61°F to 131°F)	-20°C to +46°C (-4°F to +114°F)
Colour	Silver (RAL 9006)	Silver (RAL 9006)	Silver (RAL 9006)	Silver (RAL 9006)	Silver (RAL 9006)	Silver (RAL 9006)
Weight	16kg (35.2lbs)	20kg (44lbs)	8kg (17.6lbs)	10kg (22lbs)	5kg (11lbs)	6kg (13.2lbs)
Dimensions	291 x 502 x 151mm (11.5 x 19.8 x 6.2")	291 x 502 x 219mm (11.5 x 19.8 x 8.6")	291 x 312 x 150mm (11.5 x 12.3 x 6")	291 x 312 x 215mm (11.5 x 12.3 x 8.5")	289 x 183 x 232mm (11.4 x 7.2 x 9.1")	289 x 183 x 232mm (11.4 x 7.2 x 9.1")
Additional Features	CoolExtrude™ Thermal Management Removable PSU and LED modules Smart access wiring system T4, T5 and T6 Variants (T4 as standard)	CoolExtrude™ Thermal Management Removable PSU and LED modules Smart access wiring system T4, T5 and T6 Variants (T4 as standard)	CoolExtrude™ Thermal Management Removable PSU and LED modules Smart access wiring system T4, T5 and T6 Variants (T4 as standard)	CoolExtrude™ Thermal Management Removable PSU and LED modules Smart access wiring system T4, T5 and T6 Variants (T4 as standard)	CoolExtrude™ Thermal Management Removable PSU and LED modules Smart access wiring system T4 and T5 Variants (T4 as standard)	CoolExtrude™ Thermal Management Removable PSU and LED modules Smart access wiring system T4 and T5 Variants (T4 as standard)

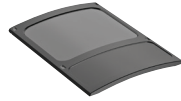
Emergency Battery Back-up

Battery		Ni/Cd 12V 4.5Ah		Ni/Cd 12V 4.5Ah		NiCd 12V 2.5Ah
Duration		Up to 90mins at 25% power (1x battery unit) Other options available		Up to 90mins at 50% power (1x battery unit) Other options available		Up to 3hrs @ 25% power Other options available
Charge Time		20 hours		20 hours		20 hours
Additional Features						Automatic self-testing

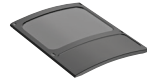
VARIO LENSES



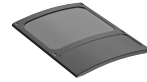
VARIO i16 LENS



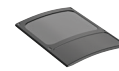
VARIO i8 LENS



VARIO i6 LENS



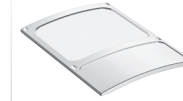
VARIO i4 LENS



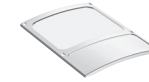
VARIO i2 LENS



VARIO w16 LENS



VARIO w8 LENS



VARIO w4 LENS



VARIO w2 LENS

Description	Lens insert for VARIO i16	Lens insert for VARIO i8	Lens insert for VARIO i6	Lens insert for VARIO i4	Lens insert for VARIO i2	Lens insert for VARIO w16	Lens insert for VARIO w8	Lens insert for VARIO w4	Lens insert for VARIO w2	
Variations	35° x 10° 60° x 25° 80° x 30° 120° x 50°	35° x 10° 60° x 25° 80° x 30° 120° x 50°	35° x 10° 60° x 25° 80° x 30° 120° x 50°	35° x 10° 60° x 25° 80° x 30° 120° x 50°	35° x 10° 60° x 25° 80° x 30° 120° x 50°	35° x 10° 60° x 25° 80° x 30° 120° x 50°	35° x 10° 60° x 25° 80° x 30° 120° x 50°	35° x 10° 60° x 25° 80° x 30° 120° x 50°	35° x 10° 60° x 25° 80° x 30° 120° x 50°	35° x 10° 60° x 25° 80° x 30° 120° x 50°

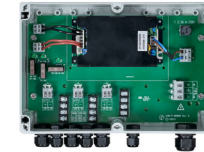
VARIO POWER SUPPLY UNITS



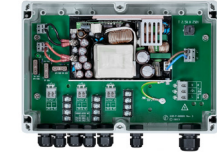
VARIO2 PSU 20W



VARIO2 PSU 50W



VARIO2 PSU 100W



VARIO2 PSU 150W

Designed to power any VARIO illuminator, including VARIO2 IP PoE, with 24V output. Allows multiple illuminators to be powered from one PSU.

Outputs	1 x 24V DC O/P	up to 2 x 24V DC O/P	up to 3 x 24V DC O/P	up to 3 x 24V DC O/P
Illuminators	1 x VARIO 2 series plus aux output (max 8W)	up to 2 x VARIO 4 series up to 2 x VARIO 6 series 1 x VARIO 8 series	up to 3 x VARIO 4 series up to 3 x VARIO 6 series up to 2 x VARIO 8 series	up to 3 x VARIO 8 series
Other Illuminator options		up to 4 x VARIO 2 series*	up to 8 x VARIO 2 series* up to 4 x VARIO 4 series* up to 4 x VARIO 6 series* 1 x VARIO 16 series	up to 6 x VARIO 4 series* up to 6 x VARIO 6 series* 1 x VARIO 16 series

VARIO UNIVERSAL BRACKETS



VUB-POLE



VUB-WALL



VUB-PLATE-3x2



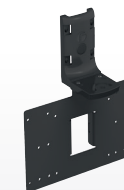
VUB-PLATE-3x4



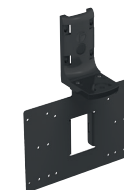
VUB-PLATE-3x8



VUB-PLATE-1x16



VUB-PLATE-PSU



VUB-PLATE-PSTR

Description	Universal Bracket for custom mounting and configuration of all VARIO illuminators		VUB Plates allow mounting of multiple illuminators and PSUs*				
	Pole Mount Bracket	Wall Mount Bracket	Allows mounting of 3x VARIO 2 series illuminators**	Allows mounting of 3x VARIO 4 series illuminators**	Allows mounting of 3x VARIO 8 series illuminators**	Allows mounting of 1x VARIO 16 series illuminator**	Allows mounting of any 1x VARIO PSU

*VUB Plates are to be used with VUB-POLE and VUB-WALL brackets **Various configurations of VARIO panel sizes and positions possible – see VUB Bracket Summary

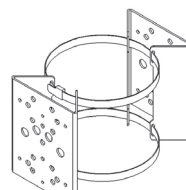
STANDARD BRACKETS



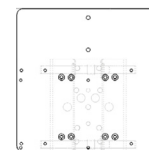
WB1



PBC1



PBC2



PBC-PSU-ADAP

Description	Wall Bracket - L Shape	Pole Bracket Clamp for 1 x illuminator	Pole Bracket Clamp for 2 x illuminators	Adaptor to convert 1 mount on PBC1 or PBC2 to fit a PSU
-------------	------------------------	--	---	---

VARIO ACCESSORIES



VARIO REMOTE



DAYTIME SET-UP TOOL

Description	Remote control to enable advanced features on VARIO	Daytime set-up tool for VARIO and other Raytec illuminators
-------------	---	---

Lighting Design Service

Our team of experts can design a lighting scheme tailored to your individual requirements. This service offers -

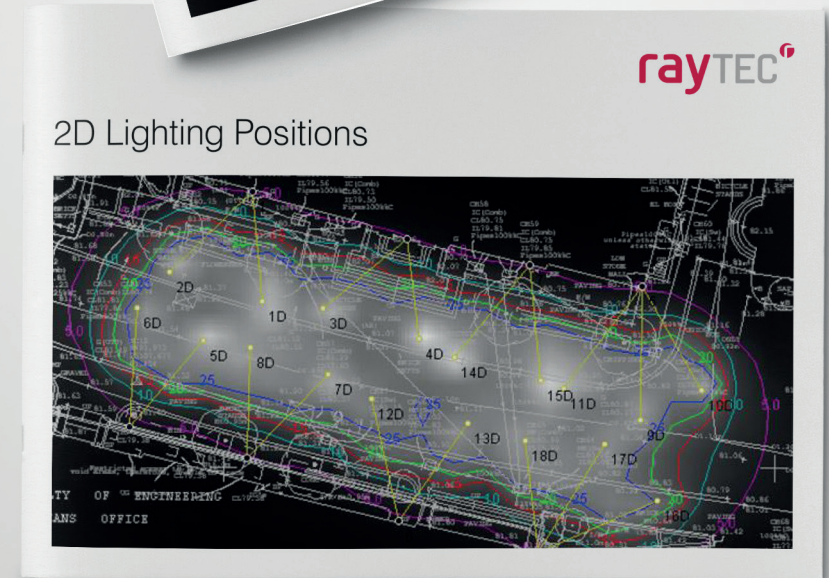
- Full Site 3D Modelling
- Lighting Scheme Video
- 3D & 2D Illuminance Mapping
- 3D & 2D Lighting Positions
- Simulated Infra-Red Images

Consultant Specification Data

Raytec's latest range of VARIO2 illuminators is available with POWERS scientific test data to help security professionals specify with confidence. POWERS data provides a full understanding of how your illuminator will perform.

Custom Built Product Design

We love to solve problems with Lighting! Speak to our special operations division about your bespoke project or challenging application.



Who are Raytec?

We are the world leaders in LED lighting for security and safety critical applications, providing a range of LED illuminators to improve the safety of any area at night and to improve the performance of any surveillance system under darkness.

Founded in 2005, Raytec have two offices, located in Northumberland, UK and Ottawa, Canada.

A History of World Firsts

Raytec are committed to innovation + illumination and have always looked to lead lighting trends in the market. The Raytec portfolio includes several product firsts such as:

- IP Lighting
- Adaptive Illumination™
- VARIO Interchangeable Lens Technology
- Hot-Spot Reduction Technology
- Hybrid Lighting
- PoE Lighting
- Explosion Protected LED Lighting

UK Designed & Manufactured

All Raytec illuminators are designed and manufactured at our UK HQ and we're so confident in our quality that all our illuminators come with a 5 year warranty. Raytec and all our products are also ISO9001 and ISO14001 certified.

Our Distance Promise

To ensure security professionals can achieve high quality video surveillance images, all Raytec illuminators deliver a minimum light level on scene of $0.35\mu\text{W}/\text{cm}^2$ (Infra-Red) and 3 lux (White-Light) at their maximum stated distance. With Raytec you can be sure that our distance performance is real and easily achievable.



VARIO2 Distance Chart

Infra-Red Single Panel

Maximum Distance (Metres) (Not shown to scale)

		18	24	30	36	45	50	54	65	70	78	95	105	120	135	144	165	200	250	350	500
Horizontal Angle of View (Degrees)	10	VAR2-i2-1 10x10°										VAR2-i4-1 10x10°				VAR2-i6-1 10x10°	VAR2-i8-1 10x10°	VAR2-i16-1 10x10°			
	20	VAR2-i2-1 35x10°						VAR2-i4-1 35x10°			VAR2-i6-1 35x10°	VAR2-i8-1 35x10°	VAR2-i16-1 35x10°								
	35	VAR2-i2-1 35x10°						VAR2-i4-1 35x10°			VAR2-i6-1 35x10°	VAR2-i8-1 35x10°	VAR2-i16-1 35x10°								
	40	VAR2-i2-1 60x25°			VAR2-i4-1 60x25°		VAR2-i6-1 60x25°	VAR2-i8-1 60x25°	VAR2-i16-1 60x25°												
	50	VAR2-i2-1 60x25°			VAR2-i4-1 60x25°		VAR2-i6-1 60x25°	VAR2-i8-1 60x25°	VAR2-i16-1 60x25°												
	60	VAR2-i2-1 60x25°			VAR2-i4-1 60x25°		VAR2-i6-1 60x25°	VAR2-i8-1 60x25°	VAR2-i16-1 60x25°												
	80	VAR2-i2-1 80x30°		VAR2-i4-1 80x30°		VAR2-i6-1 80x30°	VAR2-i8-1 80x30°	VAR2-i16-1 80x30°													
	120	VAR2-i2-1 120x50°	VAR2-i4-1 120x50°	VAR2-i6-1 120x50°	VAR2-i8-1 120x50°	VAR2-i16-1 120x50°															

The VARIO2 Infra-Red series includes i2, i4, i6, i8 and i16 variants.

White-Light Single Panel

Maximum Distance (Metres) (Not shown to scale)

		12	18	20	25	35	40	48	50	60	65	70	95	110	125	180	250
Horizontal Angle of View (Degrees)	10	VAR2-w2-1 10x10°										VAR2-w4-1 10x10°				VAR2-w8-1 10x10°	VAR2-w16-1 10x10°
	20	VAR2-w2-1 35x10°						VAR2-w4-1 35x10°			VAR2-w8-1 35x10°	VAR2-w16-1 35x10°					
	35	VAR2-w2-1 35x10°						VAR2-w4-1 35x10°			VAR2-w8-1 35x10°	VAR2-w16-1 35x10°					
	40	VAR2-w2-1 60x25°			VAR2-w4-1 60x25°		VAR2-w8-1 60x25°	VAR2-w16-1 60x25°									
	50	VAR2-w2-1 60x25°			VAR2-w4-1 60x25°		VAR2-w8-1 60x25°	VAR2-w16-1 60x25°									
	60	VAR2-w2-1 60x25°			VAR2-w4-1 60x25°		VAR2-w8-1 60x25°	VAR2-w16-1 60x25°									
	80	VAR2-w2-1 80x30°		VAR2-w4-1 80x30°		VAR2-w8-1 80x30°	VAR2-w16-1 80x30°										
	120	VAR2-w2-1 120x50°	VAR2-w4-1 120x50°	VAR2-w8-1 120x50°	VAR2-w16-1 120x50°												



An Illuminating Choice
for Any Application

Global HQ

T: +44 (0) 1670 520055
F: +44 (0) 1670 819760
sales@raytecled.com

Americas

T: +1 613 270 9990
ussales@raytecled.com

www.raytecled.com