



Revista de Biología Marina y Oceanografía

ISSN: 0717-3326

revbiolmar@gmail.com

Universidad de Valparaíso

Chile

Montenegro, Diana; Jones, Brian; González, María Teresa
Report of pathogens and parasites in *Perumytilus purpuratus* from San Jorge Bay, Antofagasta, Chile
Revista de Biología Marina y Oceanografía, vol. 47, núm. 2, agosto, 2012, pp. 345-350
Universidad de Valparaíso
Viña del Mar, Chile

Available in: <http://www.redalyc.org/articulo.oa?id=47923855017>

- How to cite
- Complete issue
- More information about this article
- Journal's homepage in redalyc.org

redalyc.org

Scientific Information System

Network of Scientific Journals from Latin America, the Caribbean, Spain and Portugal

Non-profit academic project, developed under the open access initiative

Report of pathogens and parasites in *Perumytilus purpuratus* from San Jorge Bay, Antofagasta, Chile

Registro de patógenos y parásitos en *Perumytilus purpuratus* en la bahía San Jorge, Antofagasta, Chile

Diana Montenegro^{1, 3}, Brian Jones² and María Teresa González³

¹Facultad de Recursos del Mar, Universidad de Antofagasta, Casilla 170, Antofagasta, Chile. dmontenegrov@gmail.com

²Department of Fisheries, Murdoch University, P.O. Box 20 North Beach, WA 6920 Australia

³Instituto de Investigaciones Oceanológicas, Universidad de Antofagasta, Casilla 170, Antofagasta, Chile. mtgonzalez@uantof.cl

Abstract.- *Perumytilus purpuratus* is a mussel commonly found on the entire Chilean coastline. The knowledge of pathogens and parasites of this mollusc, as well as for many other species, inhabiting the Chilean coast remains largely unknown. This study aims to survey parasites and pathogens in *P. purpuratus* from San Jorge Bay, Antofagasta, Chile. From September to October 2009, 160 specimens of this bivalve were collected. Ciliates, virus-like, rickettsia-like organisms (RLO) and digeneans were recorded. The most prevalent parasites were metacercariae of digeneans in gonads (50.83%), gill ciliates (37.5%), and digestive gland viruses-like (37.5%). Only the prevalence of digeneans increased with host size, but any relationship between these variables was found in the other pathogens.

Key words: Ciliates, virus-like, rickettsia-like, digeneans

INTRODUCTION

Effective control of diseases in marine organisms requires a routine monitoring, which facilitates diagnosis and the implementation prevention strategies (Cáceres-Martínez & Vásquez-Yeomans 2001). In South America, studies of parasites and diseases of bivalves are scarce (Caceres-Martínez & Vasquez-Yeomans 2008), even though they are important and necessary. In Chile, major contribution about presence of parasites in molluscs have been recorded by Oliva (1984, 1992), Oliva *et al.* (1986, 1999, 2010), Franjola & Gallardo (1991), Gallardo *et al.* (1992), Oliva & Vega (1994), García-Tello *et al.* (2002), Valderrama *et al.* (2004), and pathogens by Lohrmann *et al.* (2002), Lohrmann (2009), Campalans & Lohrmann (2009). However, the knowledge of pathogens and parasites in marine organisms inhabiting San Jorge Bay (Antofagasta) and the majority of the Chilean coast remains largely unknown.

Perumytilus purpuratus (Lamarck, 1819) is a mussel (Mytilidae) that inhabits along the entire Chilean coastline. This species is also called a bioengineer because creates microhabitats for many others species in the marine rocky intertidal zone (Prado & Castilla 2006). This bivalve has been used as pollution marker for heavy metals in San Jorge Bay, north of Chile (Herrera 1997, Riveros *et al.* 2002, 2003, Salamanca *et al.* 2004) due to

this bay has been polluted for many years. Besides the ecological importance of this species in the rocky coast, there are a few studies on their parasites, but none about pathogens. An increase of pathogen growth occurs in polluted environments (Gold-Bouchot *et al.* 1995, Wester *et al.* 2002), and it is also expected that pathogen growth increase with climate change (Harvell *et al.* 2002). Thus, the objective of this study was to survey and identify parasites and pathogens in the abundant mussel *P. purpuratus* from San Jorge bay, Antofagasta, Chile.

MATERIALS AND METHODS

COLLECTION OF SAMPLES

From September to October of 2009, one hundred sixty specimens of *Perumytilus purpuratus* were collected from San Jorge Bay (23°43'S, 70°26'W). The specimens collected were immediately transported to laboratory, where they were measured using a vernier caliper (0.1 mm precision). Mussels were dissected and examined according to following protocols.

HISTOLOGICAL SURVEY

Forty specimens were utilised for histological analyses.

Gills, gonads and digestive glands were fixed (Davidson solution for 24 h); then they were dehydrated, embedded in Paraplast, sectioned at 5 µm with a Microtome Minot and stained with haematoxylin and eosin (Bancroft & Stevens 1990). The slides were then observed under light microscopy. Intensity of pathogens in gills, gonads and digestive glands was calculated as the number of pathogens observed in the whole histological mussel section, according to Svardh (1999). Intensity was categorised according to following criteria: 1-5 pathogens (range 1), 6-15 pathogens (range 2) and over 20 pathogens (range 3). Prevalence was calculated as the number of mussels infected by a particular pathogen divided by the total number of mussels examined, expressed in percentage (Bush *et al.* 1997).

PARASITES 'IN VIVO'

A hundred twenty specimens of *Perumytilus purpuratus* were separated, and parasites were examined *in vivo*, surveyed and counted. The prevalence of parasites and the mean intensity of infection were calculated according to Bush *et al.* (1997). Prevalence was calculated as mentioned above, and the mean intensity of infection was calculated as the mean number of a particular parasite species found in each host, considering only infected mussels.

STATISTICAL ANALYSES

Mussels were arbitrary categorized in seven sizes of classes as showed in Table 1. Given that data set showed non-normality and homogeneity of variances, Kruskal-Wallis test was used to compare the intensity of parasites (metacercariae) among mussel size classes. Tables of contingency 2 x 7 were used to evaluate the prevalence of parasites and pathogens, respectively, in mussels related to each size class (Zar 1999). All analyses were performed using the Statistica 6.0 software.

RESULTS AND DISCUSSION

The sizes of examined mussels varied between 26.75 and 40.05 mm total shell length. The mussels examined were infected with two parasites (digenean and ciliates), and two pathogens (RLO and virus-like), which were recorded in gills, digestive glands and gonads (Fig. 1).

Considering all specimens sampled, the most prevalent parasite/pathogens were digeneans in gonads (50.83%), ciliates (37.5%), and viruses-like (32.5%) on gills; followed by viruses-like (37.5%) and (RLO) in digestive gland (25%). The prevalence of pathogens did not vary among mussels of different size classes. Virus-like ($G = 0.90$; $df = 5$; $P = 0.97$), Ciliates ($G = 4.54$; $df = 4$; $P = 0.34$) on gills, virus-like ($G = 0.12$; $df = 3$; $P = 0.72$), RLO ($G = 1.13$; $df = 3$; $P = 0.77$) in digestive gland.

Table 1. Prevalence of pathogens/parasites and mean intensity of metacercariae in gonads in each size classes of the mussel *Perumytilus purpuratus*; Virus-like= lesions particles virus-like in gills, Ciliates=ciliates on gills, Virus-like= lesions of presence of virus-like in digestive gland, RLO= rickettsia-like bacteria in digestive gland / Prevalencia de patógenos/parásitos e intensidad media de metacercarias en gónadas por clases de tamaño del mitílido *Perumytilus purpuratus*; Virus-like=lesiones en las partículas tipo virus en branquias, Ciliates=ciliados en branquias, Virus-like= lesiones en las partículas tipo virus en glándula digestiva, GL-RLO= bacteria tipo rickettsiales en la glándula digestiva

Groups	Size classes	N° of Mussels	Gill		Digestive gland		Gonads		
			Virus-like	Ciliates-like	Virus-like	RLO	N° of Mussels	Prevalence Metacercariae	Mean intensity
Group 1	26.75-28.65	2	0	0	100	0	10	40	6.75
Group 2	28.65- 30.55	5	40	20	0	0	26	46.15	2.58
Group 3	30.55-32.45	10	30	40	30	0	33	21.21	3.00
Group 4	32.45-34.35	8	37.5	37.5	12.5	25	16	56.25	6.89
Group 5	34.35 - 36.25	6	33.3	33.3	16.6	33.3	18	77.78	6.14
Group 6	36.25-38.15	8	25	50	12.5	12.5	14	78.57	5.72
Group 7	38.15 - 40.05	1	100	100	0	0	3	100	25.66
Total		40					120		

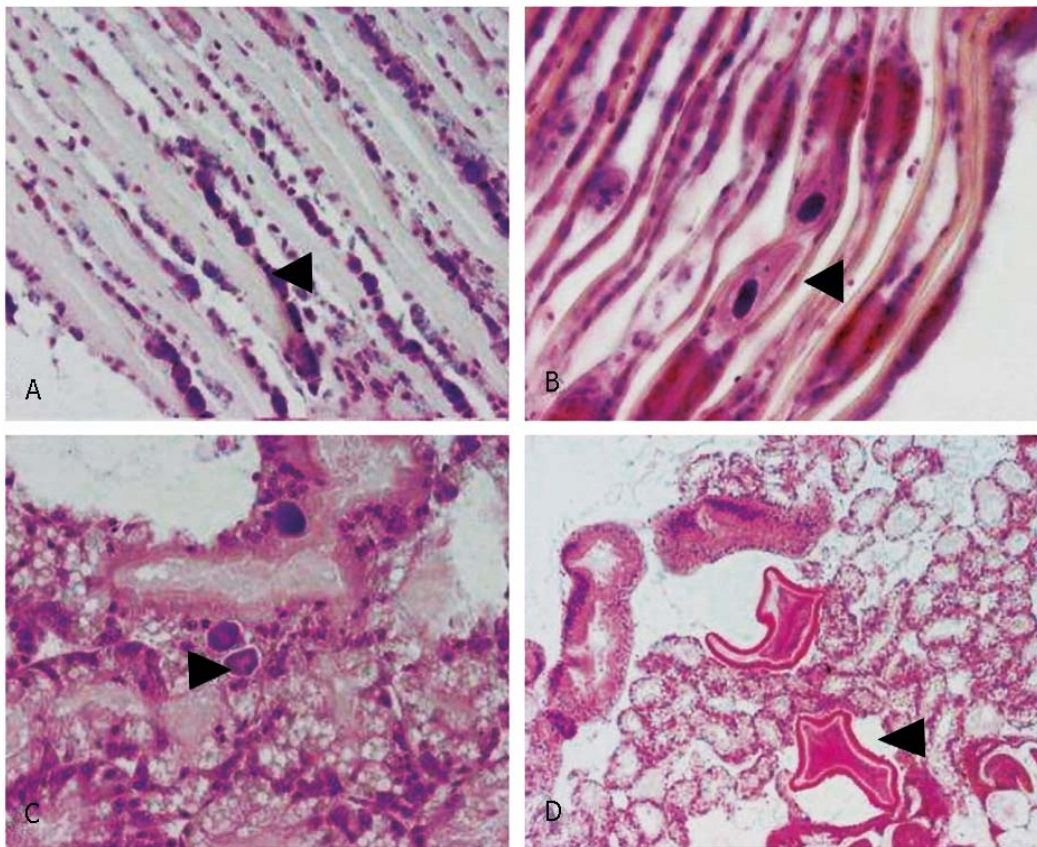


Figure 1. Histological sections showing pathogens/parasites in *Perumytilus purpuratus* from San Jorge Bay. A) lesion of virus-like in gills, B) ciliates in gills, C) rickettsia-like bacteria in digestive gland, D) metacercariae in digestive gland / Sección histológica mostrando los patógenos/parásitos en *Perumytilus purpuratus* de la bahía San Jorge. A) lesiones de tipo virus en branquias, B) ciliados en branquias, C) bacterias tipo rickettsiales en glándula digestiva, D) metacercaria en glándula digestiva

On gills, virus-like and ciliates were present in moderate (range 2) and high intensities (range 3) in mussels from the groups 2 to 6, but these pathogens were absent (range 0) in mussels of group 1 (Fig. 2). In digestive gland, virus-like showed the highest intensity in mussels from group 5 (Fig. 2) and RLO showed a high intensity in mussels from groups 4 to 6 (Fig. 2). There were not correlations in the intensity of virus-like, ciliates and RLO with sizes of mussels (on gills, virus-like: $r = 0.06$, $N = 40$, $P = 0.68$; Ciliates: $r = 0.2$, $N = 40$, $P = 0.09$; in digestive gland, virus-like: $r = -0.17$, $N = 40$, $P = 0.28$; RLO: $r = 0.15$, $N = 40$, $P = 0.33$).

Metacercariae, possibly belonging to the Rencolidae family (pers. comm., Dr. Cremonte¹, were found in gonads

of *P. purpuratus* (1-49 per mussel). There were significant differences in the prevalence of metacercariae among mussel-size classes ($G = 19.57$, $df = 5$, $P = 0.001$), varying between 21.21% in the group 3 to 100% in the group 7 (higher sizes of mussels). Mean intensity varied between 2.58 in the group 2 and 25.66 in the group 7, detecting a significant difference between these groups ($H_{6,124} = 29.87$; $P < 0.01$) (Table 1). Prevalence of metacercariae was significantly correlated with mussel sizes ($r = 0.34$, $N = 124$, $P < 0.01$). Pathogens and parasites showed no significant differences between host sexes ($G = 1.29$; $df = 1$; $P = 0.25$).

¹Dra. Florencia Cremonte. Laboratorio de Parasitología, Centro Nacional Patagónico (CONICET), Puerto Madryn, Argentina.

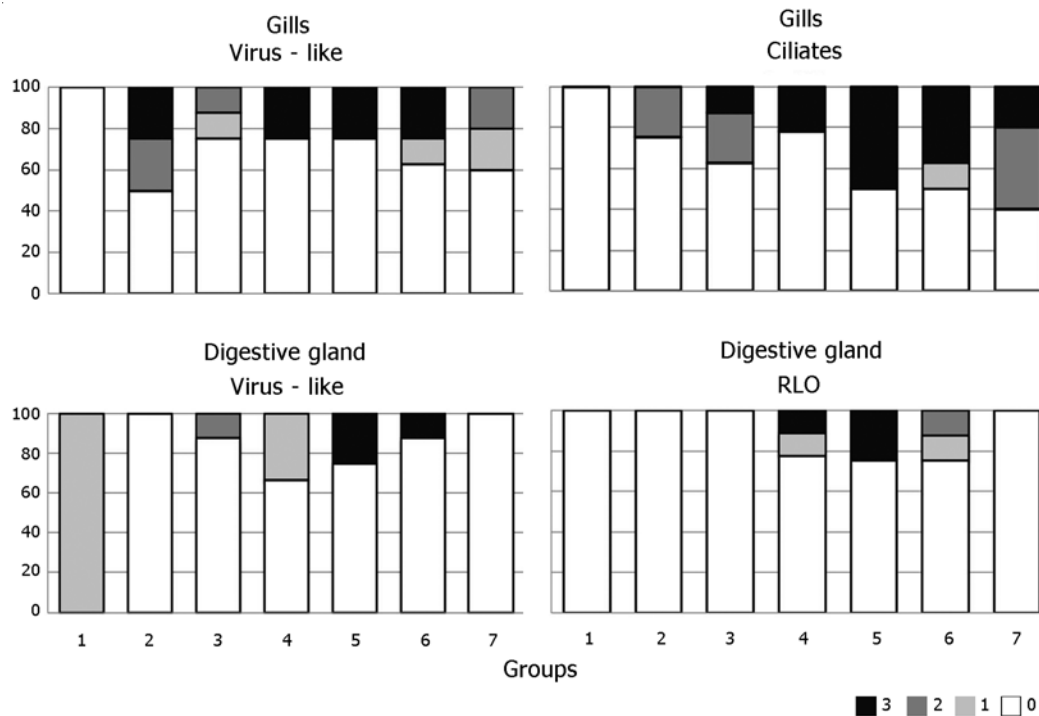


Fig 2. Intensity of pathogens/parasites in mussel *Perumytilus purpuratus*. 0 = no present, 1 = low, 2 = moderate, 3 = severe / Intensidad de patógenos/parásitos en el mitilido *Perumytilus purpuratus*. 0 = no presenta, 1 = bajo, 2 = moderado, 3 = severo

This study is the first record of microparasites such as ciliates, virus-like, and rickettsia-like organisms in *Perumytilus purpuratus* from San Jorge bay, and of the Chilean coast. According to Hatzidimitriou & Berger (1977) and Bower *et al.* (1994), ciliates can be considered as commensals rather than parasites. Villalba *et al.* (1997) recorded in mussel *Mytilus galloprovincialis* different species of ciliates, which most of them resembled to *Ancistrum mytili*. Madrazo-Garibay & Lopez-Ochoterena (1985) described *Ancistrum* genus as pyriform shape, presence of ovoid macronucleus and a spherical micronucleus. In this study, it was found an unidentified ciliate on gills (37.5% prevalence) and it is suggested that it may be a representing of this genus.

Virus-like have been reported by Jones *et al.* (1996) in New Zealand and Rasmussen (1986) in Denmark. Also, viruses-like have been reported as category 1 in Canada Fisheries, meaning that they are agents of infectious diseases, which can have serious impact on shellfish stocks, as indicated by Bower (2010). In this study, it was

found lesions that could be attributed to virus-like, but ultrastructural examination and molecular analyses are needed to support this.

RLO are obligate intracellular organisms that infect the epithelial cells of the gastrointestinal tract of marine molluscs (Sun & Wu 2004). Along the Chilean coast, RLO have been previously reported in molluscs (Lohrmann *et al.* 2002, Lohrmann 2009, Campalans & Lohrmann 2009). The Rickettsia bacteria *Candidatus Xenohaliotis californiensis* have been listed by OIE (2008) as a high-risk disease for molluscs in Chile (Campalans & Lohrmann 2009). Some reports indicate that Rickettsias are directly responsible for causing mortality of marine molluscs (Sun & Wu 2004) or they play a main role in causing mortality of molluscs (Braid *et al.* 2005). In this study, the prevalence of RLO (22.2-40%) was moderate. Therefore taking account the importance of Rickettsia-like organisms as infectious agents, studies are necessary to identify RLO found in *P. purpuratus*.

In relation to digeneans, some authors have previously reported larval stages in *P. purpuratus* (Aldana *et al.* 2009, Oliva *et al.* 2010), but there is no record about metacercariae stages. Representatives of Rencolidae family have been found in molluscs (Werdning 1969) and fishes (Stunkard 1932). However, representatives of this family have not previously been reported in any kind of hosts in Chile (see Muñoz & Olmos 2008). Given that morphology is not fully confident to identify this larval stage, molecular analyses can be required to support identification of metacercariae here recorded.

In the last decade, the global consumption of molluscs is increasing, so the aquaculture of molluscs is also increasing. The high density of cultivated molluscs normally put in risk of acquiring pathogens. Mussel *P. purpuratus* is an important native species due to role of bioengineering on intertidal zone and as bio-indicator of pollution in Chile, but this species also could play an important role in passing on pathogens and parasites. Therefore, clarify the specific identity of the micro-parasites here reported and life cycle of digenean (Rencolidae) is a first step to understand the potential relationships between parasites/pathogens, aquaculture, and environmental monitoring.

ACKNOWLEDGMENTS

Authors are grateful to Programa Magíster en Ecología Sistemas Acuáticos, Universidad de Antofagasta, in supporting young scientists. We also thank the anonymous reviewers and Dra. Gabriela Muñoz, associate editor, for their valuable suggestions to help the authors improve this manuscript.

LITERATURE CITED

- Aldana M, K González, G Loot, J Pulgar & P Marquet. 2009.** First intermediate host of the digenean trematode *Proctoeces lintoni* (Fellodistomidae) in Chile. *Journal of Parasitology* 95(6): 1408-1414.
- Bancroft J & A Stevens. 1990.** Theory and practice of histological techniques, 744 pp. Churchill Livingstone, London.
- Bower SM. 2010.** Synopsis of infectious diseases and parasites of commercially exploited shellfish: *Ancistrum mytili* gill ciliate of mussels. Fisheries and Oceans Canada [en línea] <<http://www.pac.dfo-mpo.gc.ca/science/species-especies/shellfish-coquillages/diseases-maladies/index-eng.htm>>
- Bower SM, SE McGladdery & LM Price. 1994.** Synopsis of infectious diseases and parasites of commercially exploited Shellfish. *Annual Review of Fish Diseases* 4: 1-99.
- Braid B, J Moore, T Robbins, R Hedrick, R Tjeerdema & C Friedman. 2005.** Health and survival of red abalone, *Haliotis rufescens*, under varying temperature, food supply, and exposure to the agent of withering syndrome. *Journal of Invertebrate Pathology* 89: 219-231.
- Bush AO, KD Lafferty, JM Lotz & AW Shostak. 1997.** Parasitology meets ecology on its own terms: Margolis *et al.* revisited. *Journal of Parasitology* 83: 575-583.
- Cáceres-Martínez J & R Vásquez-Yeomans. 2001.** Manual de enfermedades moluscos. Boletín del Programa Nacional de Sanidad Acuicola y la Red de Diagnóstico, UAM-SAGARPA 4(16): 1-10.
- Cáceres-Martínez J & R Vásquez-Yeomans. 2008.** La patología en moluscos bivalvos: principales problemas y desafíos para la producción de bivalvos en América Latina. [en línea] <<ftp://ftp.fao.org/docrep/fao/011/i0444s/i0444s28.pdf>>
- Campalans M & K Lohrmann. 2009.** Histological survey of four species of cultivated molluscs in Chile susceptible to OIE notifiable diseases. *Revista de Biología Marina y Oceanografía* 44: 561-569.
- Franjola R & C Gallardo. 1991.** Estados larvales de digenea en *Kingiella chilénica* (Mollusca-Bivalvia, Cyamiidae). *Boletín Chileno de Parasitología* 46: 34-35.
- Gallardo S, R Franjola & O Garrido. 1992.** Histopatología de *Kingiella chilénica* (Bivalvia, Cyamiidae) parasitada por redias y cercarías de la familia Gymnophallidae. *Boletín Chileno de Parasitología* 47: 64-66.
- García-Tello P, V Ardiles & JL Fajardo. 2002.** Bacteria in the hemolymph of *Argopecten purpuratus* (Lamarck 1819) (Bivalvia: Pectinidae). *Revista de Biología Marina y Oceanografía* 37(2): 147-149.
- Gold-Bouchot G, R Simá-Alvarez, O Zapata-Pérez & J Güemez-Ricalde. 1995.** Histopathological effects of petroleum hydrocarbons and heavy metals on the American Oyster (*Crassostrea virginica*) from Tabasco, Mexico. *Marine Pollution Bulletin* 31: 439-445.
- Harvell CD, CE Mitchell, JR Ward, S Altizer, AP Dobson, RS Ostfeld & MD Samuel. 2002.** Climate warming and disease risks for terrestrial and marine biota. *Science* 296: 2158-2162.
- Hatzidimitriou G & J Berger. 1977.** Morphology and morphogenesis of *Ancistrum mytili* (Scuticociliatida: Thigmotrichina) a commensal ciliate of mytilid pelecypods. *Protistologica* 13: 477-495.
- Jones JB, PD Scotti, SC Dearing & B Wesney. 1996.** Virus-like particles associated with marine mussel mortalities in New Zealand. *Diseases of Aquatic Organisms* 25: 143-149.
- Lohrmann K, AR Brand & SW Feist. 2002.** Comparison of the parasites and pathogens present in a cultivated and in a wild population of scallops (*Argopecten purpuratus* Lamarck, 1819) in Tongoy Bay, Chile. *Journal of Shellfish Research* 21(2): 557-561.

- Lohrmann K. 2009.** How healthy are cultivated scallops (*Argopecten purpuratus*) from Chile? A histopathological survey. *Revista de Biología Marina y Oceanografía* 44(1): 35-47.
- Madrazo-Garibay M & E Lopez-Ochoterena. 1985.** Protozoarios ciliados de Mexico XXIX. Aspectos biológicos de seis especies asociadas a *Crassostrea virginica* (Gmelin) (Mollusca, Bivalvia) de la laguna de terminus, Campeche, Mexico. *Anales del Centro de Ciencias del Mar y Limnología*. Contribucion 403, Instituto de Ciencias del Mar y Limnología, UNAM. [en línea] <<http://biblioweb.tic.unam.mx/cienciasdelmar/instituto/1988-1/articulo283.html>>
- Muñoz G & V Olmos. 2008.** Revisión bibliográfica de especies endoparasitas y hospedadoras de sistema acuáticos de Chile. *Revista de Biología Marina y Oceanografía* 43(2): 173-245.
- OIE. 2008.** Aquatic animal health code. Disease of molluscs. World Organization for Animal Health, Paris. [on line] <www.oie.int/es/>
- Oliva ME. 1984.** *Proctoeces chilensis*, nueva especies (Trematoda: Strigeatoidea, Fellodistomidae), parásito en *Sicyases sanguineus* Muller & Troschel, 1843 (Pisces: Teleostei). *Boletín de la Sociedad de Biología de Concepción* 55: 87-92.
- Oliva ME 1992.** Parasitic castration of *Fissurella crassa* (Mollusca: Archaeogastropoda) due to an adult digenea *Proctoeces lintoni*. *Memorias do Instituto Oswaldo Cruz* 87: 37-42.
- Oliva ME & A Vega. 1994.** Effect of *Proctoeces lintoni* (Digenea) on the fecundity of *Fissurella crassa* (Archaeogastropoda). *Memorias do Instituto Oswaldo Cruz* 89: 225.
- Oliva ME, H Herrera, J Matulic & B Severino. 1986.** Parasitismo en el ostión del norte Chlamys (*Argopecten purpuratus*) (Lamarck, 1819). *Parasitología al Día* 10: 83-86.
- Oliva M, A Olivares, C Diaz & M Pasten. 1999.** Parasitic castration in *Concholepas concholepas* (Gastropoda: Muriciade) due to a larval digenean in northern Chile. *Disease of Aquatic Organisms* 36: 61-65.
- Oliva ME, IM Valdivia, L Cárdenas, & M George-Nascimento, & K Gonzalez, R Guíñez & D Cuello. 2010.** Molecular and experimental evidence refuse the life cycle of *Proctoeces lintoni* (Fellodistomidae) in Chile. *Parasitology Research* 106: 737-740.
- Prado L & J Castilla. 2006.** The bioengineer *Perumytilus purpuratus* (Mollusca: Bivalvia) in central Chile: biodiversity, habitat structural complexity and environmental heterogeneity. *Journal of the Marine Biological Association of the United Kingdom* 86: 417-421.
- Rasmussen LPD. 1986.** Virus-associated granulocytomas in the marine mussel, *Mytilus edulis*, from three sites in Denmark. *Journal of Invertebrate Pathology* 48: 117-123.
- Riveros A, M Zuñiga, A Hernandez & A Camaño. 2002.** Cellular biomarkers in native and transplanted populations of the mussel *Perumytilus purpuratus* in the intertidal zones of San Jorge Bay, Antofagasta, Chile. *Archives of Environmental Contamination and Toxicology* 42: 303-312.
- Riveros A, M Zuñiga & A Larrain. 2003.** Copper metallothionein-like proteins as exposure biomarker in native and transplanted intertidal populations of the mussel *Perumytilus purpuratus* from San Jorge Bay, Antofagasta, Chile. *Bulletin of Environmental Contamination and Toxicology* 70: 233-241.
- Rodríguez T. 1997.** Estudio preliminar del contenido de metales pesados (Cu, Pb, Zn, Hg) en agua de mar y en *Perumytilus purpuratus*, en Bahía San Jorge, Antofagasta. Seminario para optar al título de Ingeniero en Acuicultura y Licenciado en Ciencias del Mar. Universidad de Antofagasta, Antofagasta, 82 pp.
- Salamanca M, B Jara & T Rodríguez. 2004.** Niveles de Cu, Pb y Zn en agua y *Perumytilus purpuratus* en Bahía San Jorge, norte de Chile. *Gayana* 68(1): 53-62.
- Stunkard HW. 1932.** Some larval trematodes from the coast of Roscoff, Finistere. *Parasitology* 24: 321-343.
- Svardh L. 1999.** Bacteria, granulocytomas, and trematode metacercariae in digestive gland of *Mytilus edulis*: seasonal and interpopulation variation. *Journal of Invertebrate Pathology* 74: 275-280.
- Sun J & X Wu. 2004.** Histology, ultrastructure, and morphogenesis of a rickettsia-like organism causing disease in oyster, *Crassostrea ariakensis* Gould. *Journal of Invertebrate Pathology* 86: 77-86.
- Valderrama K, M Oliva, B Campos & D Brown. 2004.** Parasitic castration of *Eurhormalea lenticularis* (Bivalvia: Veneridae) by a digenetic trematode: quantitative histological analysis. *Disease of Aquatic Organisms* 59: 151-158.
- Villalba A, S Mourelle, MJ Carballal & C López. 1997.** Symbionts and diseases of farmed mussels *Mytilus galloprovincialis* throughout the culture process in the Rias of Galicia (NW Spain). *Diseases of Aquatic Organisms* 31: 127-139.
- Werding B. 1969.** Morphologie, Entwicklung und Ökologie digener Trematoden-larven der Strandschnecke *Littorina littorea*. *Marine Biology* 3: 306-333.
- Zar JH. 1999.** Biostatistical analysis, 663 pp. Prentice-Hall, Englewood Cliffs.

Received 26 March 2012 and accepted 1 June 2012

Associated Editor: Gabriela Muñoz C.