



Redcar & Cleveland Local Wildlife and Geological Sites

Updated January 2023



1	EXECUTIVE SUMMARY	3
2	BACKGROUND	5
3	SCHEDULE OF LOCAL WILDLIFE SITES	7
4	SCHEDULE OF LOCAL GEOLOGICAL SITES	13
	APPENDIX I: Location Maps	17



I. EXECUTIVE SUMMARY

- I.1** Local Wildlife Sites (LWS) and Local Geological Sites (LGS) are collectively referred to as Local Sites. They are areas of land that are identified as being important for wildlife or geology and worthy of conservation.
- I.2** Local Sites are not a statutory designation and there are no legal protections or statutory duties associated with their designation. They have protection through the planning system and the Redcar & Cleveland Local Plan includes policy to protect the sites from inappropriate development. Landowners are also encouraged and supported to maintain the sites in a positive way.
- I.3** The Tees Valley Local Sites Partnership, which is part of the Tees Valley Nature Partnership, provides advice to the five Councils in the Tees Valley about the sites which should be selected and facilitates and documents the management of the sites to maintain their wildlife and geological importance.
- I.4** The selection and designation of sites is an on-going process and additional sites may be selected or de-selected throughout a Local Plan period. The tables in Sections 3 and 4 identify all designated Local Sites within the borough and will be kept up to date following any new selection or de-selection of sites.



2. BACKGROUND

What are Local Sites and why do we need them?

- 2.1** Local Sites can be Local Wildlife Sites (LWS) or Local Geological Sites (LGS). Local Wildlife Sites are areas of land which meet specific, objective criteria for nature conservation value. These criteria, which are based on the Defra guidance⁽¹⁾, have been decided locally by the Tees Valley Local Sites Partnership. The sites represent a range of important habitat types and variety of species that are of conservation concern. The Tees Valley RIGS (Regionally Important Geological Sites) group advises the Local Sites Partnership on the selection and management of Local Geological Sites, areas which they have identified as being of geological importance.
- 2.2** Local Sites can provide local contact with nature and opportunities for education, however designation as a Local Site does not confer any right of access.
- 2.3** Formerly known as Sites of Nature Conservation Interest (SNCIs) and RIGS, Local Sites are non-statutory site designations that have a lower level of protection than statutory designations, such as Sites of Special Scientific Interest (SSSIs). Local Sites, excluding those within the North York Moors National Park, currently receive protection from certain types of inappropriate development through our Local Plan. Sites within the National Park are protected through planning policies within the Park area.
- 2.4** In addition to providing protection of the sites through the planning system, the other main reason for designation of these sites is to encourage and support management. Management of Local Sites should to be 'positive' (i.e. to relate to the interest features for which the site was selected), with the percentage in positive management reported annually.

Selection of Sites

- 2.5** The Tees Valley Local Sites Partnership is a working group of the Tees Valley Nature Partnership, and includes representatives of all five local authorities. It has several roles to play in the management of the Local Sites system, including:
- Advising local authorities on the selection and designation of sites;
 - Documenting the management of sites; and
 - Facilitating management of sites to maintain their ecological/geological interest features.
- 2.6** The selection and designation of sites is an on-going process and additional sites may be selected or de-selected throughout a Plan period. This document therefore identifies all designated Local Sites within the borough and will be kept up to date following any new selection or de-selection of sites.

¹ Local Sites: Guide to their Identification, Selection and Management, DEFRA (2006)



3. SCHEDULE OF LOCAL WILDLIFE SITES

3.1 Local Wildlife Sites have been selected on the basis of criteria relating to:

- Habitat: (woodland, grasslands, heath and moor, wetlands, coastal habitats, artificial habitats and habitat mosaics); or
- Species: mammals, birds, amphibians and reptiles, invertebrates, butterflies, moths and odonata (dragonfly).

3.2 Sites that are already Sites of Special Scientific Interest (SSSIs) are not eligible for designation as Local Wildlife Sites unless the Local Wildlife Sites criteria are additional to those of the SSSI.

I. Sites within Redcar and Cleveland Borough and outside the National Park.	Selection criteria, based on Guidelines for Selection by Tees Valley Wildlife Trust and Local Sites Partnership, listed by category and description	Site reference number
Blue House Farm Grassland North	G1 Neutral grasslands	52
Carlin Howe Farm	A1 Great Crested Newts	42
Cat Nab Grassland	C2 Coastal grasslands	1
Cattersty Cliff	C2 Coastal grasslands G1 Neutral grasslands G2 Calcareous grasslands	2
Cattersty Grassland	G1 Neutral grasslands	3
Chaloner Pit	A1 Great Crested Newts	4
Chapel Beck	M4 Water Vole	43
Claphow Reservoir Wood	W2 Broad leaved woodland and replanted ancient woodland	5
Capon Hall Farm Brown Hills Grassland	G1 Neutral grasslands	54
Capon Hall Farm Grassland	G1 Neutral grasslands	53
Coatham Marsh	C1 Saltmarsh C2 Coastal grasslands E1 Flushes, seepages, springs etc	6

	G1 Neutral grasslands UI Urban grasslands V2 Vascular Plants	
Dunsdale Beck Grassland	G1 Neutral grasslands	58
Dunsdale Wood Complex	W1 Ancient woodland W2 Broad leaved woodland and replanted ancient woodland	7
Dunsdale Wood Meadow	G1 Neutral grasslands	8
Elm Heads Grassland	E1 Flushes, seepages, springs etc G1 Neutral grasslands	9
Eston Moor	L1 Lowland heath E3 Basin mire	10
Eston Pumping Station	Mosaic of habitats. Urban Grasslands with “borderline” Neutral Grassland covers 25% of the site.	61
Hagg Hill Grassland	G1 Neutral grasslands	11
Handale Pasture	G1 Neutral grasslands	12
Hazel Grove	W1 Ancient woodland W2 Broad leaved woodland and replanted ancient woodland	13
Hobdale Terrace Grassland	G1 Neutral grasslands	14
Holygill Well Grassland	G1 Neutral grasslands	15
Hummersea Bank	C2 Coastal grasslands	16
Jackdaw Crag	C2 Coastal grasslands	17
Kilton Beck Complex	W1 Ancient woodland W2 Broad leaved woodland and replanted ancient woodland	18

Kilton Mine	A1 Great Crested Newts and A2 Native amphibians in adjacent pond G1 Neutral grasslands	19
Layland Beck Wood	W2 Broad leaved woodland and replanted ancient woodland	20
Lingdale Common	G1 Neutral grasslands	83
Little Dale Grassland	G1 Neutral grasslands	21
Little Dale Woodland	W2 Broad leaved woodland and replanted ancient woodland	22
Liverton Mill Wood Grassland	G1 Neutral grasslands	56
Loftus Woods Complex	W1 Ancient woodland W2 Broad leaved woodland and replanted ancient woodland	23
Lowcross Farm Grassland	G1 Neutral grasslands	24
Low Mill Slag Tip	U1 Urban grasslands	25
Lumpsey Mine Grassland	G1 Neutral grasslands	26
Margrove Ponds	A1 Great Crested Newts A5 Slow worm	27
Merrys Wood Grassland	G1 Neutral grasslands	29
Moorsholm Lane Verge	G1 Neutral grasslands	57
Moorsholm Mill Grassland	G1 Neutral grasslands	60
North Bank, Saltburn	C2 Coastal grasslands	30
Redcar to Saltburn Coast	C2 Coastal grasslands V2 Vascular Plants	31
Redcar to Saltburn Foreshore	O1 Wintering populations of birds as % of national population	44
Red House Farm Grassland	G1 Neutral grasslands	55

Roakley House Farm Grassland North West	G1 Neutral grasslands	50
Roakley House Farm Grassland South West	G1 Neutral grasslands	49
Rock Hole Quarry	A5 Slow worm	41
Saltburn Cliffs Pond	A1 Great Crested Newts	45
Saltburn Gill Complex	W1 Ancient woodland W2 Broad leaved woodland and replanted ancient woodland	32
Saltburn Grange Grassland	G1 Neutral grasslands	33
Saltburn Viaduct Grassland	G1 Neutral grasslands	28
Saltburn to Staithes Coast 1	O2 Breeding populations of birds as % of national population	46
Saltburn to Staithes Coast 2	O2 Breeding populations of birds as % of national population	47
Skelton Beck Complex	W1 Ancient woodland W2 Broad leaved woodland and replanted ancient woodland	34
Skelton Ellers	I2 White-letter hairstreak	81
Skinningrove Cliffs (East)	C2 Coastal grasslands G1 Neutral grasslands	35
Skinningrove Cliffs (West)	C2 Coastal grasslands	36
Skinningrove Grassland	G1 Neutral grasslands	37
Soapwell Field	G1 Neutral grasslands	38
South Bank Station Black Path	UI Urban Grassland	84
Upleatham Bridge	I2 White-letter hairstreak	82
Warren Cottages Grassland	G1 Neutral grasslands	51
Waytail Beck Grassland	G1 Neutral grasslands	39

Wilton Woods Complex	W1 Ancient woodland W2 Broad leaved woodland and replanted ancient woodland	40
Windy Hill Farm Grassland	G1 Neutral grasslands	59
Wygrave Wood	W1 Ancient woodland W2 Broad leaved woodland and replanted ancient woodland	48
2. Sites within Redcar and Cleveland Borough and within the National Park		
Aysdale Gate Woodland	W1 Ancient woodland	76
Easington Beck Complex	W1 Ancient woodland	77
Grinkle Park Grassland South	G1 Neutral grasslands	68
Grinkle Park Grassland South East	G1 Neutral grasslands	69
Handale Abbey Grassland	G1 Neutral grasslands	62
Handale Banks Grassland	G1 Neutral grasslands	66
Hutton Hall Grassland	G1 Neutral grasslands	70
Hutton Village Grassland	G1 Neutral grasslands	71
Lockwood Beck Reservoir	O3 High numbers of key breeding or wintering bird species	78
Low Farm Gerrick Hay Meadow	G1 Neutral grasslands	63
Low Waupley Farm Lane Pasture	G1 Neutral grasslands	67
Mill Avens Farm Grassland	G1 Neutral grasslands	64
Newton Wood	W1 Ancient woodland	74
Oneham's Pasture	G1 Neutral grasslands	72
Pinkney Bank	G1 Neutral grasslands	73

Scaling Dam Reservoir	O3 High numbers of key breeding or wintering bird species	79
Thatchmire Farm	G1 Neutral grasslands	65
Waupley Wood Grassland	G1 Neutral grasslands	80
Wileycat Wood	W1 Ancient woodland	75

4. SCHEDULE OF LOCAL GEOLOGICAL SITES

- 4.1 The selection of these sites has been carried out on the basis of the value of the sites for scientific, historical, aesthetic or educational reasons.
- 4.2 Sites that are already Sites of Special Scientific Interest (SSSIs) designated for their geology are not eligible for designation as Local Geological Sites (LGS) unless the extent of the LGS is larger.

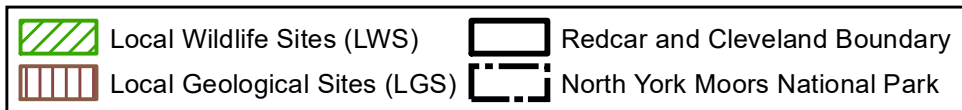
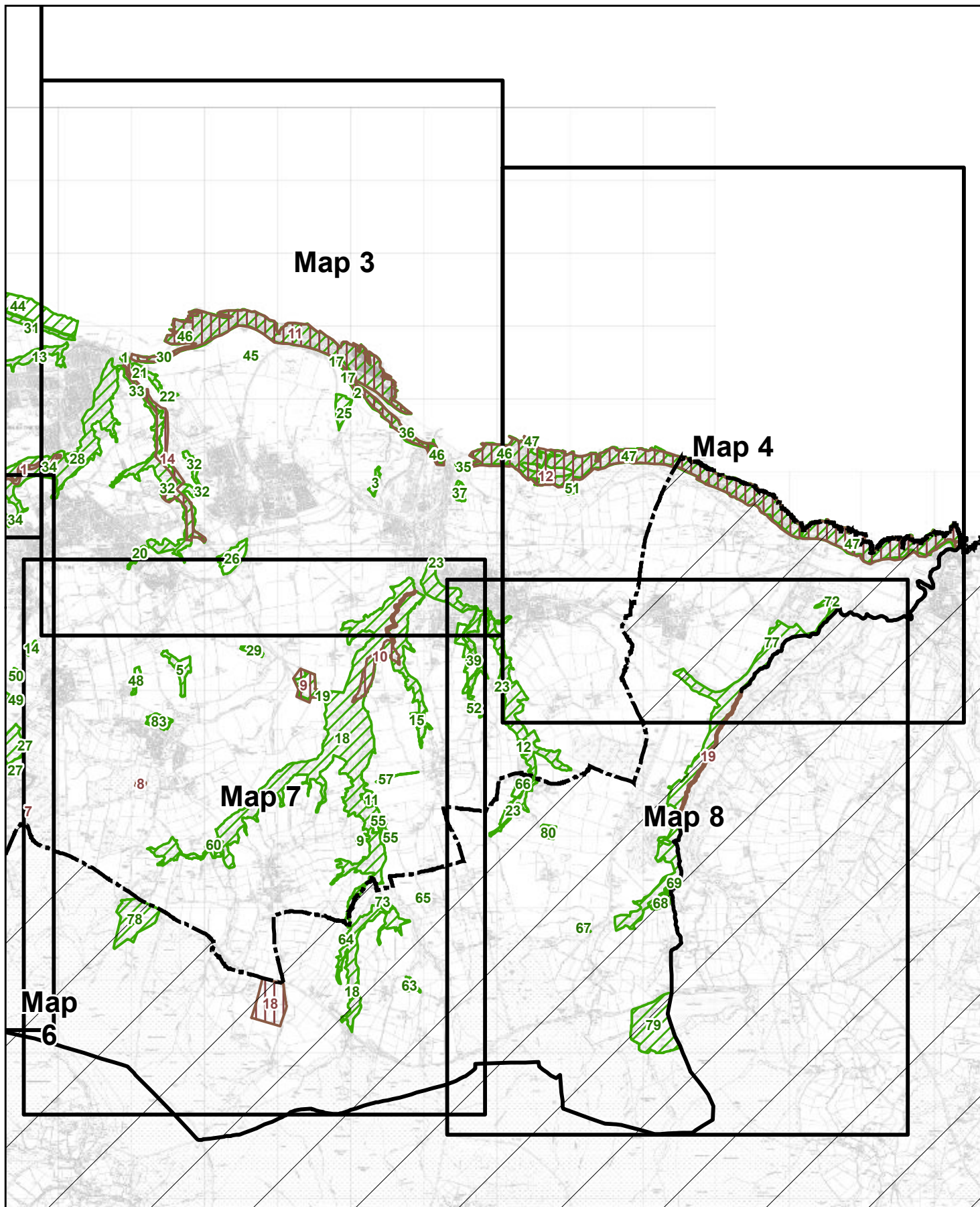
I. Sites within Redcar and Cleveland Borough and outside the National Park		
Site name	Reasons for designation	Site reference number
	All the sites are valued for scientific reasons. Points of particular interest are shown.	
Birk Brow Quarry	<ul style="list-style-type: none"> Sandstone quarry (middle Jurassic). Features in a publication for schoolchildren. 	7
Coatham Rocks	<ul style="list-style-type: none"> Exposure of Redcar submerged forest. 	13
Errington Woods	<ul style="list-style-type: none"> Composite site. Quarries (middle Jurassic sandstone) contain some plant fossils. Includes glacial melt water channel. Includes remains of Upleatham ironstone mine. Used by school groups. 	2
Eston Hills	<ul style="list-style-type: none"> Composite site: Lazenby Incline, sandstone (middle Jurassic) quarries at Eston Nab, and former mining track bed. Site of Eston Mine, with exposures of ironstone. Eston Nab is a prominent landmark. Used by adult groups for education. 	3

Kilton Beck (covers both Kilton Castle Rivercliff and Kilton Beck Rivercliff)	<ul style="list-style-type: none"> • Natural exposures of middle Jurassic sandstone formations. • Examples of fluvial features and exposures. • Current shale embankment contains original wooden railway embankment. • Used by adult groups for education. 	10
Kilton Hill	<ul style="list-style-type: none"> • Disused ironstone mine and spoil heap. • One of the last mines in Cleveland County to close (1963). • Ironstone and fossils visible. • Remains of mine buildings. • Also proposed Local Wildlife Site (grassland on spoil slopes and Great Crested Newts in adjacent pond). 	9
Red Howles, Marske Sands	<ul style="list-style-type: none"> • Scar (wave-cut platform) formed of Lower Jurassic (Lias Group) sedimentary rocks. • The outcrop is of special geological and palaeontological interest especially in relation to the Redcar Rocks SSSI. 	15
Rock Hole Quarry	<ul style="list-style-type: none"> • Important mudstone and alum shale formations. • Exposures of oil shales and glacial sediments and zonal ammonite fossils. 	5
Saltburn Gill	<ul style="list-style-type: none"> • River-side exposures of Staithes sandstone 	14
Saltburn to Skinningrove Coast	<ul style="list-style-type: none"> • Dramatic cliffs showing local anticlinal structure and coastal processes 	11

	<ul style="list-style-type: none"> • Redcar Mudstones, Cleveland ironstone and well preserved fossils. • Rocky foreshore contains rutways associated with early ironstone working • Visited by school groups. 	
Seaton Hill Quarry	<ul style="list-style-type: none"> • Disused sandstone quarry (middle Jurassic) with mudstones. • Sedimentary bedding and load casts (deformation of strata). • Stone used to build local housing including Stone Row in Lingdale. 	8
Skelton Beck	<ul style="list-style-type: none"> • River-side exposures of sandstones and Cleveland ironstone. • Good examples of fluvial features and processes. • Man-made waterfall and sluices associated with 18th C Marske Mill. • Good educational potential. 	1
Skinningrove to Staithes Coast	<ul style="list-style-type: none"> • Foreshore of Redcar mudstone. • Includes Boulby cliffs with Jurassic strata. • Many geological features. • Remains of Alum works and former docks. 	12
Slapewath	<ul style="list-style-type: none"> • River cliff showing inland exposure of Pecten seam. 	6
Waterfall Railway Cutting	<ul style="list-style-type: none"> • Cleveland ironstone exposure. • Contains fossils and minor fault system • Includes a length of former Cleveland Branch Railway 	4

	<p>serving local ironstone mines.</p> <ul style="list-style-type: none"> • Accessible site with potential to be developed for education. 	
2. Sites within Redcar and Cleveland Borough and within the National Park		
Easington Beck	<ul style="list-style-type: none"> • Stream side exposure of middle Jurassic sandstone. • Lies within attractive woodland valued for wildlife. 	19
Freebrough Hill	<ul style="list-style-type: none"> • Landform shaped by glaciation. • Associated with Norse myth; nearby tumuli and Neolithic remains. • Well known local landmark. • Visited by school groups. 	18
Guisborough Forest	<ul style="list-style-type: none"> • Composite site made up of: mine entrance, alum quarries, quarried and natural mudstone and sandstone exposures including Highcliff Nab. • Evidence of early ironstone, alum and jet working. • Well visited and easily accessible. 	16
Roseberry Topping (beyond the area of the SSSI)	<ul style="list-style-type: none"> • Landform shaped by glaciation. • Contains mudstones, sandstones and ironstones. • Remains of jet workings and Roseberry ironstone mine. • Well known landmark. • Visited by school groups. 	20
Wileycat Beck	<ul style="list-style-type: none"> • River gorge with exposures of middle Jurassic sandstone. • Good examples of fluvial processes. 	17

APPENDIX I: Location Maps

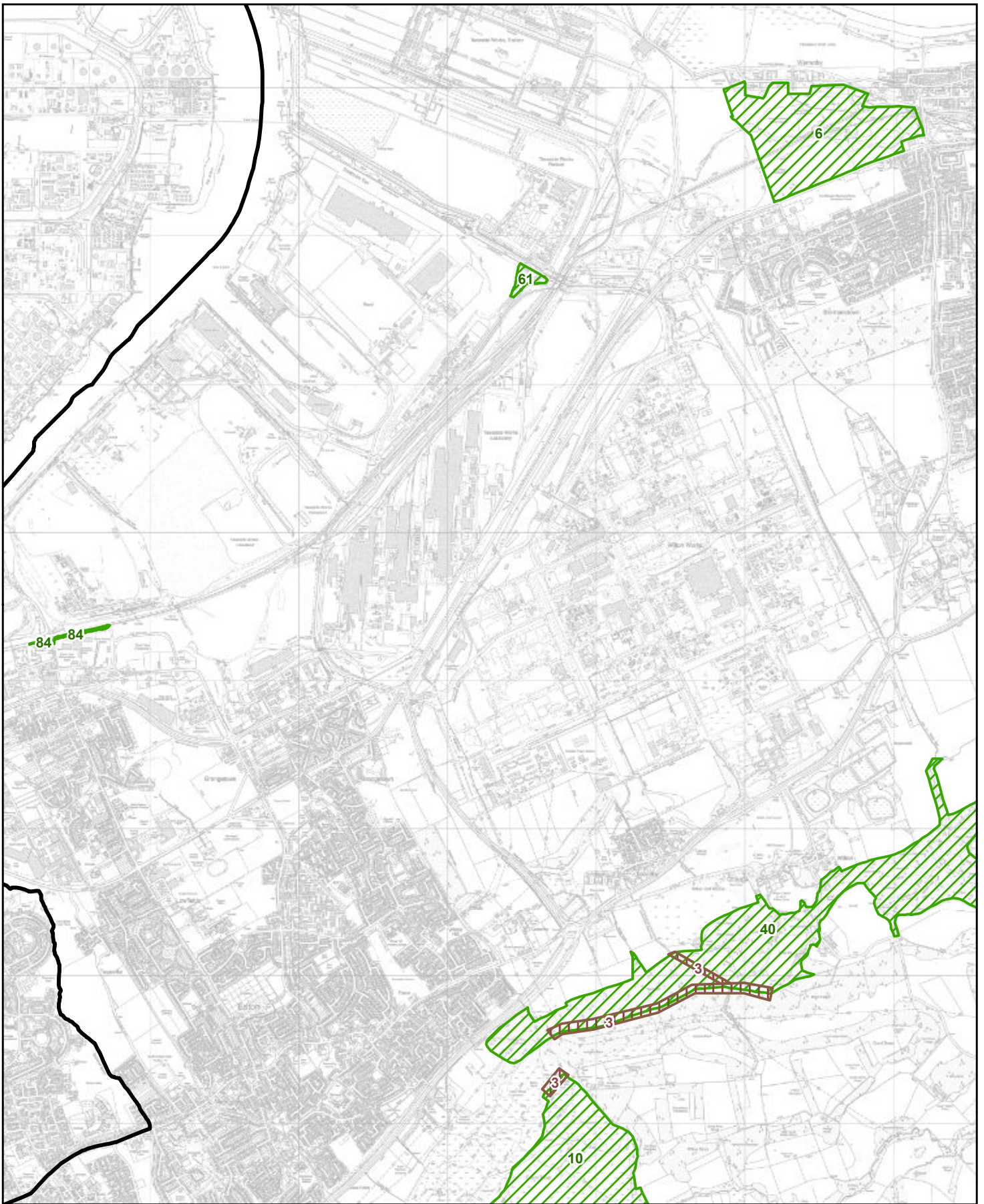


Local Wildlife and Geological Sites



Date: 24/05/2022 Drawn by: DM
 Scale = 1:70,477 DWG No: PLNG802

Contains Ordnance Survey data © Crown Copyright and database rights 2022 (100019983)



MAP 1

- Local Wildlife Sites (LWS)
- Local Geological Sites (LGS)
- Redcar and Cleveland Boundary
- North York Moors National Park



Local Wildlife and Geological Sites

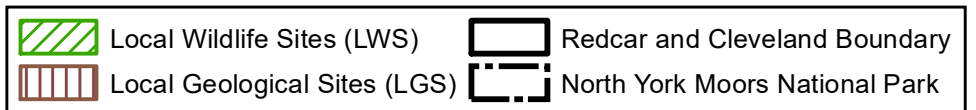


Date: 24/05/2022 Drawn by: DM
 Scale = 1:34,500 DWG No: PLNG802

Contains Ordnance Survey data © Crown Copyright and database rights 2022 (100019983)



MAP 2

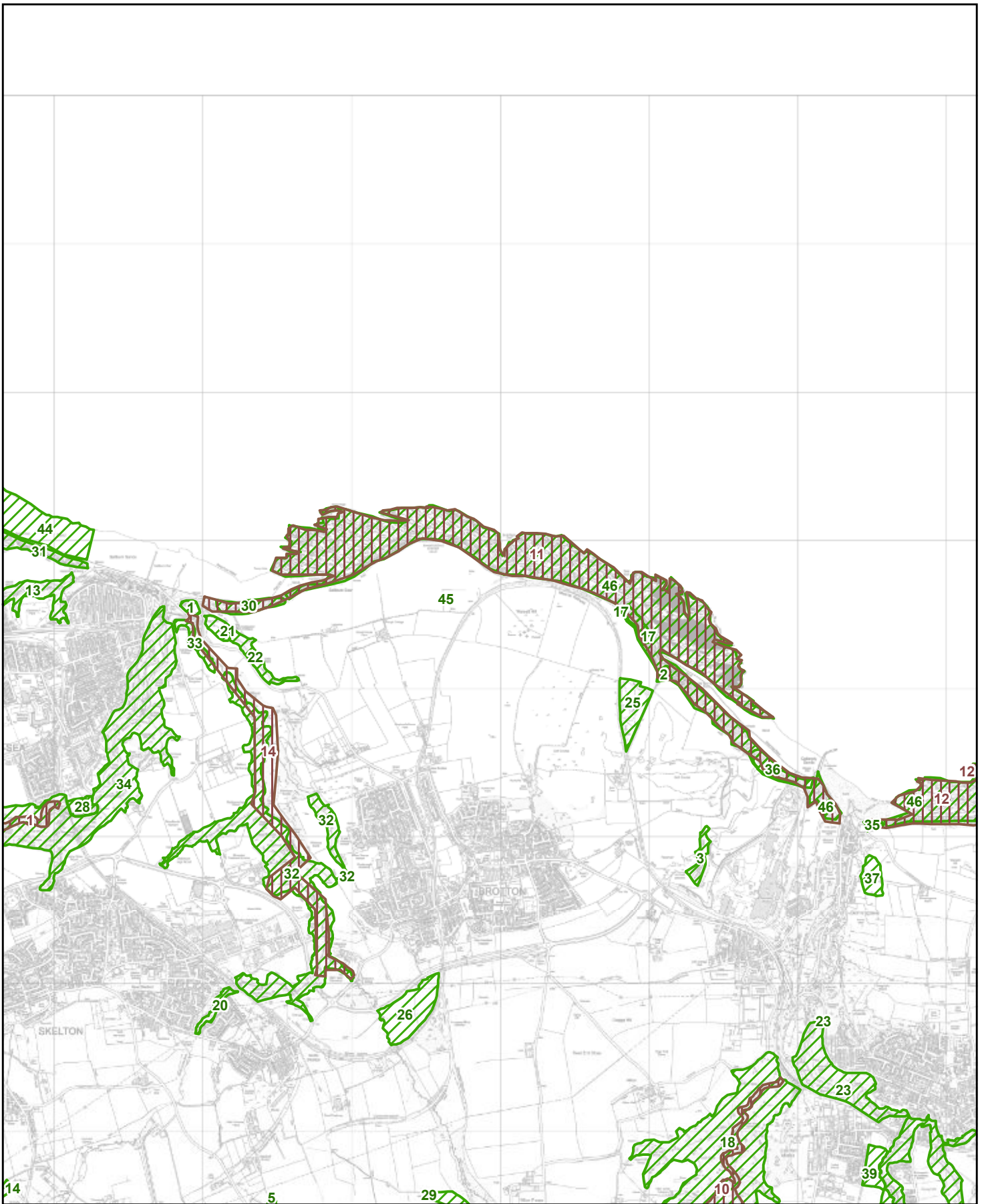


Local Wildlife and Geological Sites

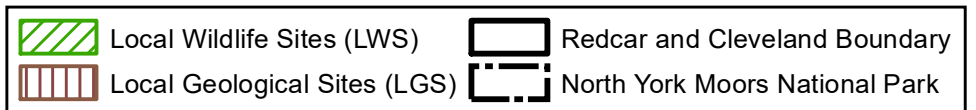


Date: 24/05/2022 Drawn by: DM
 Scale = 1:34,500 DWG No: PLNG802

Contains Ordnance Survey data © Crown Copyright and database rights 2022 (100019983)



MAP 3

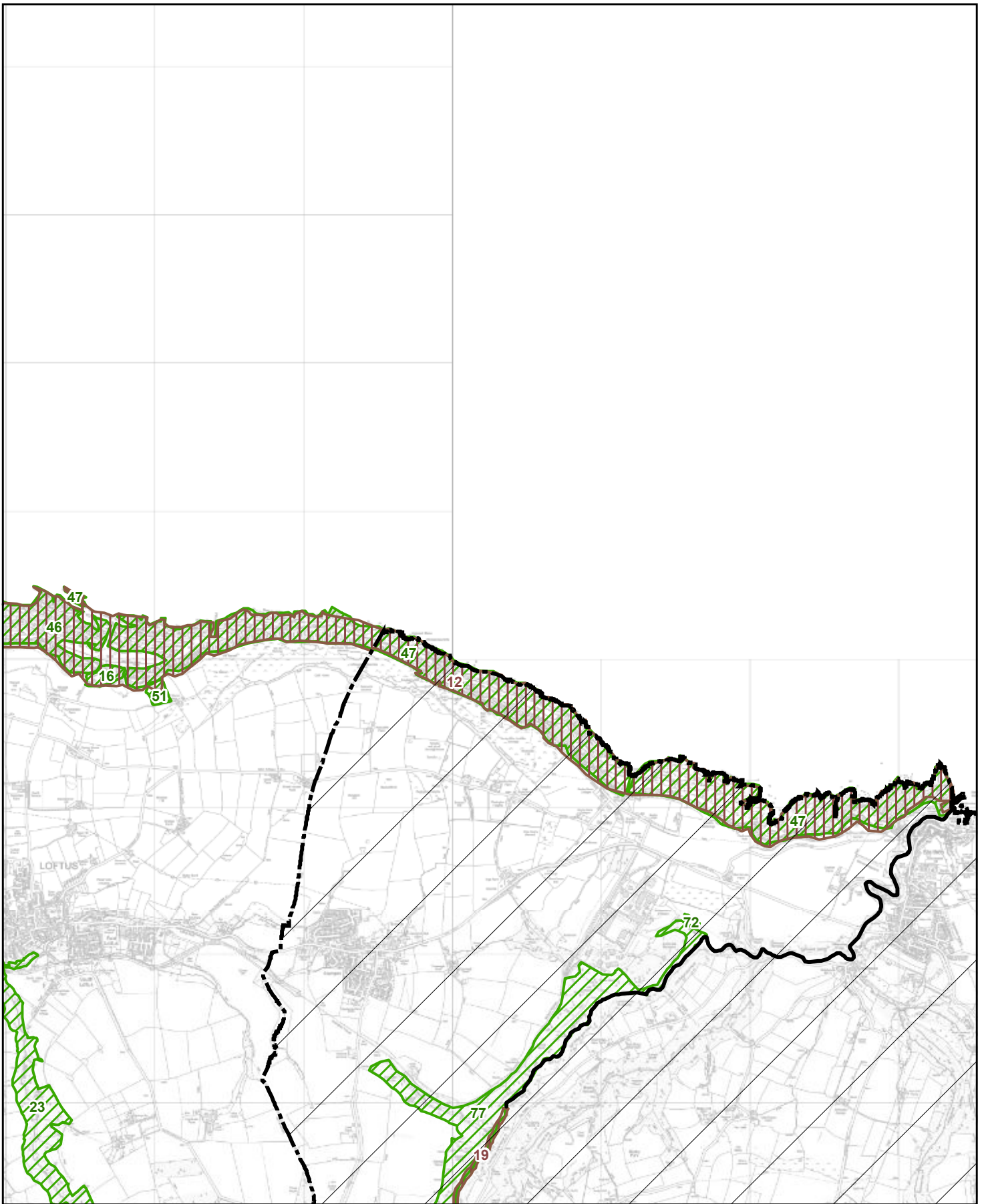


Local Wildlife and Geological Sites

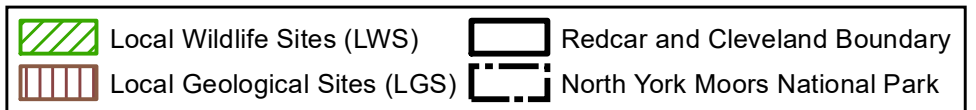


Date: 24/05/2022 Drawn by: DM
 Scale = 1:34,500 DWG No: PLNG802

Contains Ordnance Survey data © Crown Copyright and database rights 2022 (100019983)



MAP 4

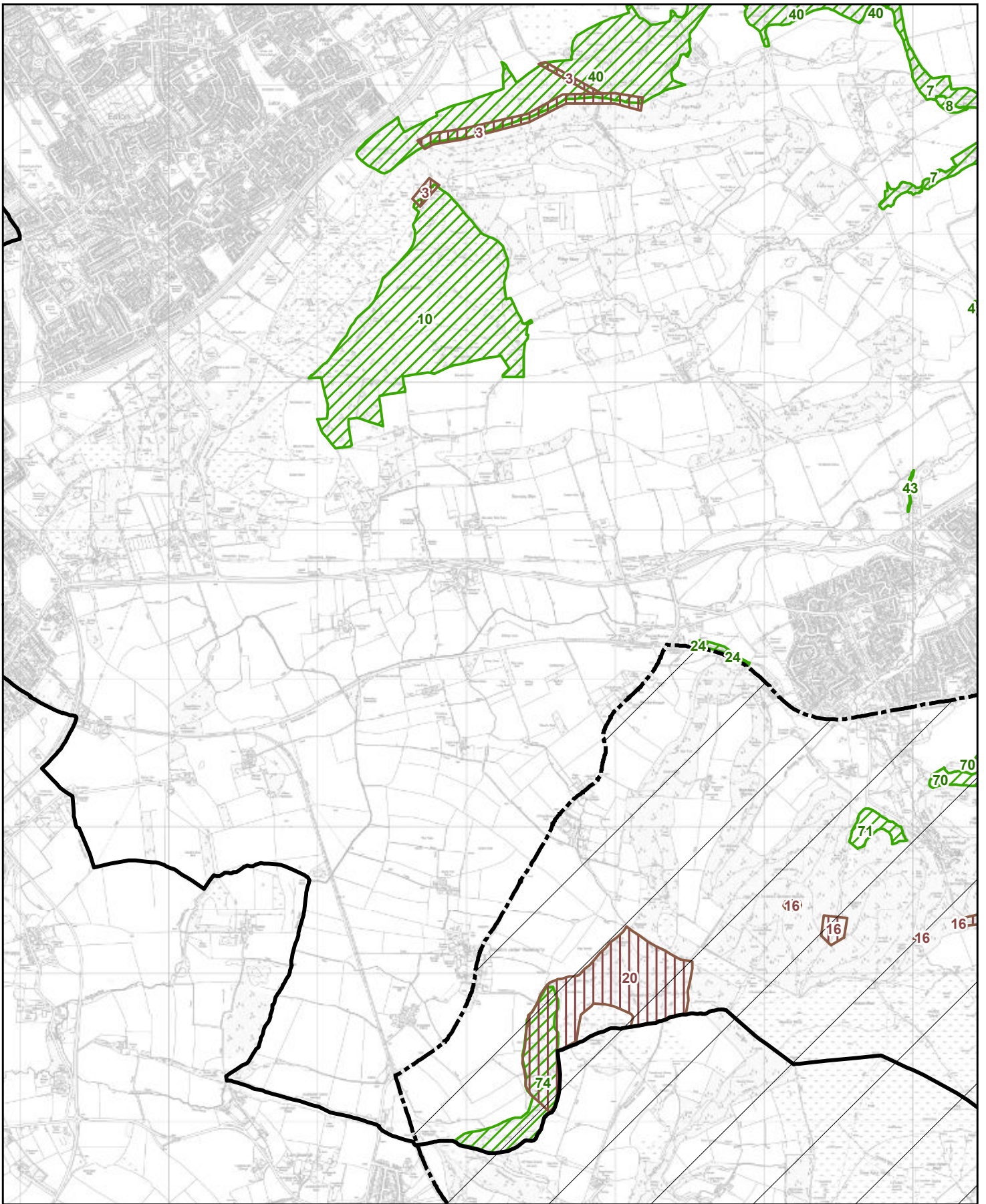


Local Wildlife and Geological Sites



Date: 24/05/2022 Drawn by: DM
 Scale = 1:34,500 DWG No: PLNG802

Contains Ordnance Survey data © Crown Copyright and database rights 2022 (100019983)



MAP 5

- Local Wildlife Sites (LWS)
- Local Geological Sites (LGS)
- Redcar and Cleveland Boundary
- North York Moors National Park

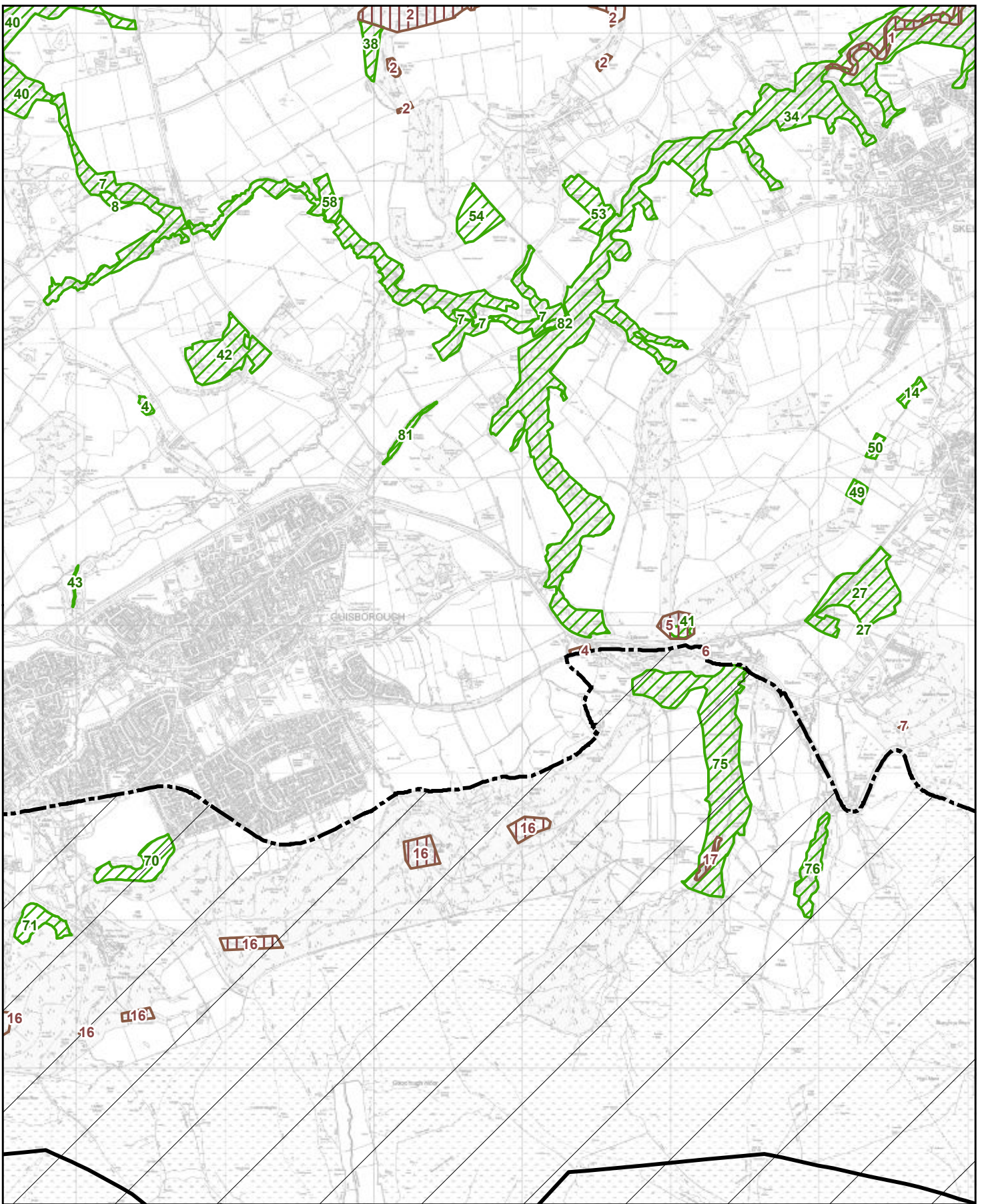


Local Wildlife and Geological Sites







Date: 24/05/2022 Drawn by: DM
 Scale = 1:34,500 DWG No: PLNG802

Contains Ordnance Survey data © Crown Copyright and database rights 2022 (100019983)



MAP 6

 Local Wildlife Sites (LWS)	 Local Geological Sites (LGS)	 Redcar and Cleveland Boundary	 North York Moors National Park
--	--	---	--

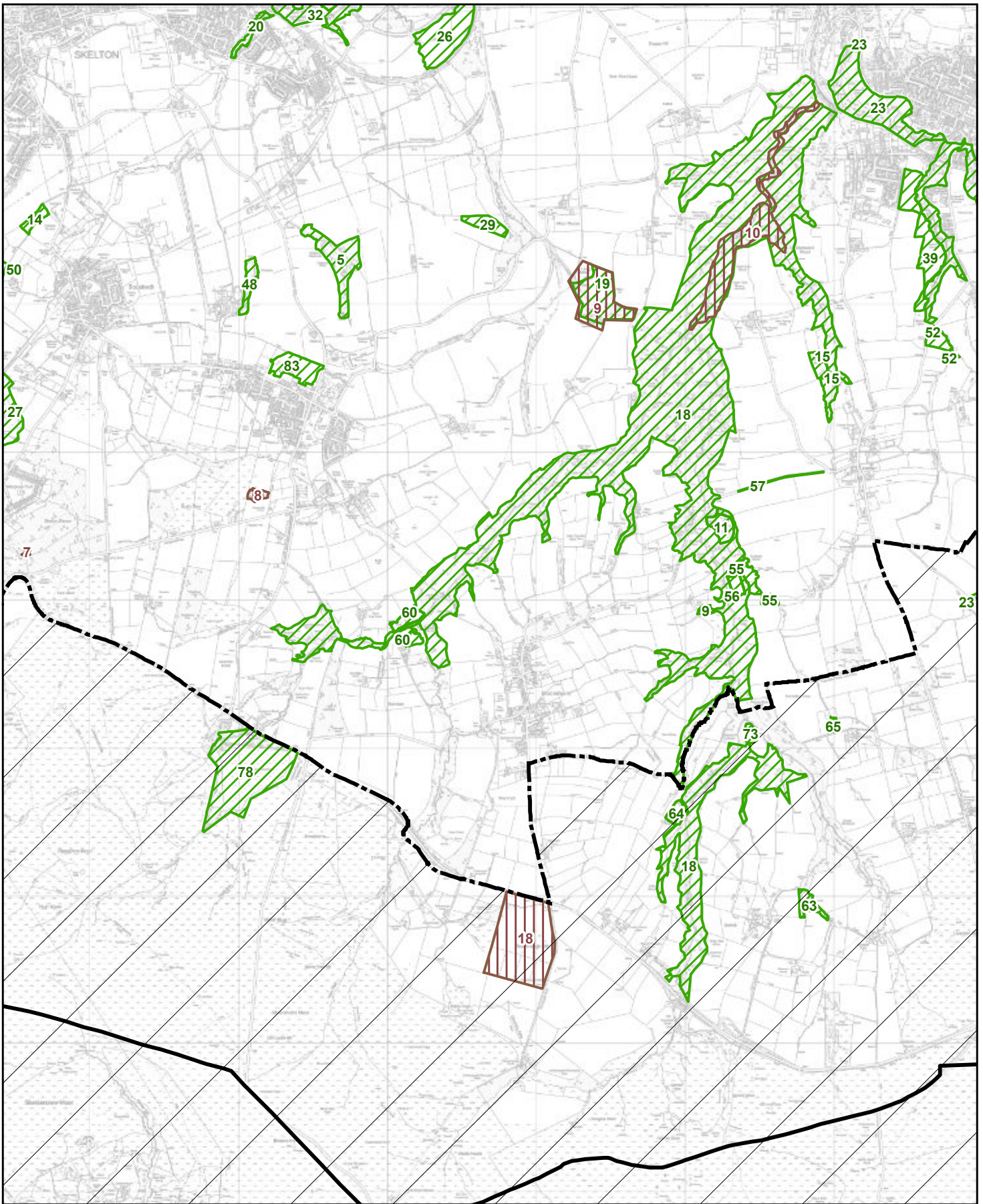


Local Wildlife and Geological Sites



Date: 24/05/2022 Drawn by: DM
 Scale = 1:34,500 DWG No: PLNG802

Contains Ordnance Survey data © Crown Copyright and database rights 2022 (100019983)



MAP 7

	Local Wildlife Sites (LWS)		Redcar and Cleveland Boundary
	Local Geological Sites (LGS)		North York Moors National Park

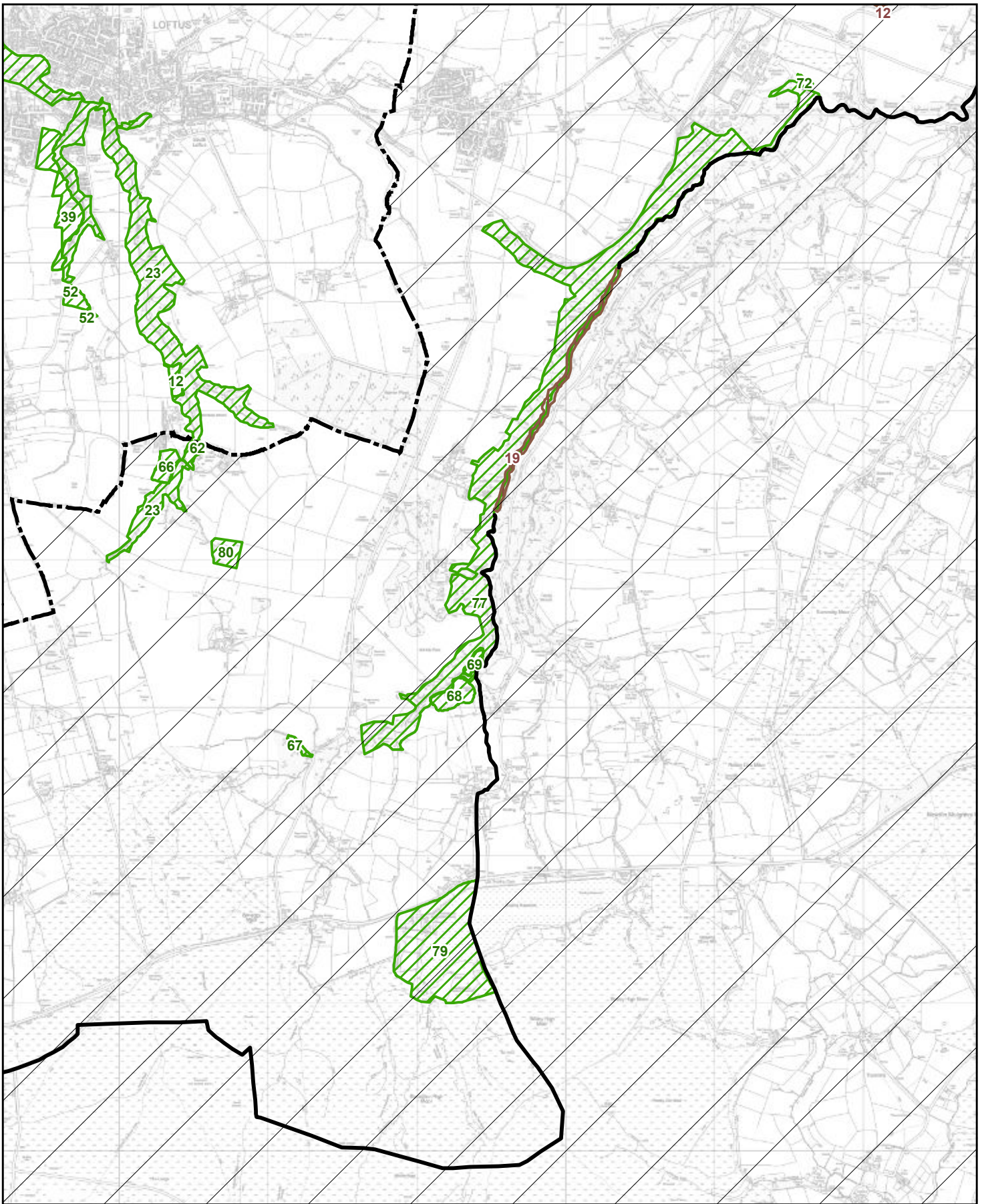


Local Wildlife and Geological Sites

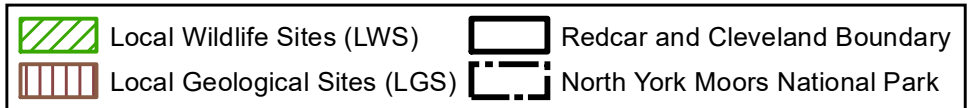


Date: 24/05/2022 Drawn by: DM
 Scale = 1:34,500 DWG No: PLNG802

Contains Ordnance Survey data © Crown Copyright and database rights 2022 (100019983)



MAP 8



Local Wildlife and Geological Sites



Date: 24/05/2022 Drawn by: DM
 Scale = 1:34,500 DWG No: PLNG802

Contains Ordnance Survey data © Crown Copyright and database rights 2022 (100019983)

This document is available in alternative formats and in different languages on request. If you need support or assistance to help you read and/or understand this document, please contact the Council on 01642 774774.



**this is
Redcar & Cleveland**

**Strategic Planning Team
Resources and Growth**
Redcar & Cleveland House
Kirkleatham Street
Redcar
TS10 1RT

strategic.planning@redcar-cleveland.gov.uk

Telephone: 01287 612356

www.redcar-cleveland.gov.uk