

The Woodcut Print Movement

Shen Kuyi

Lu Xun

Kathe Kollwitz

Mieke Bal



Zheng Shumin, et al. *Portrait of Lu Xun*. Oil on canvas. 1973.

Hu Zhengyan *Ten Bamboo Studio*
Letter Paper, ca. 1645 (Laing WO plate
1)





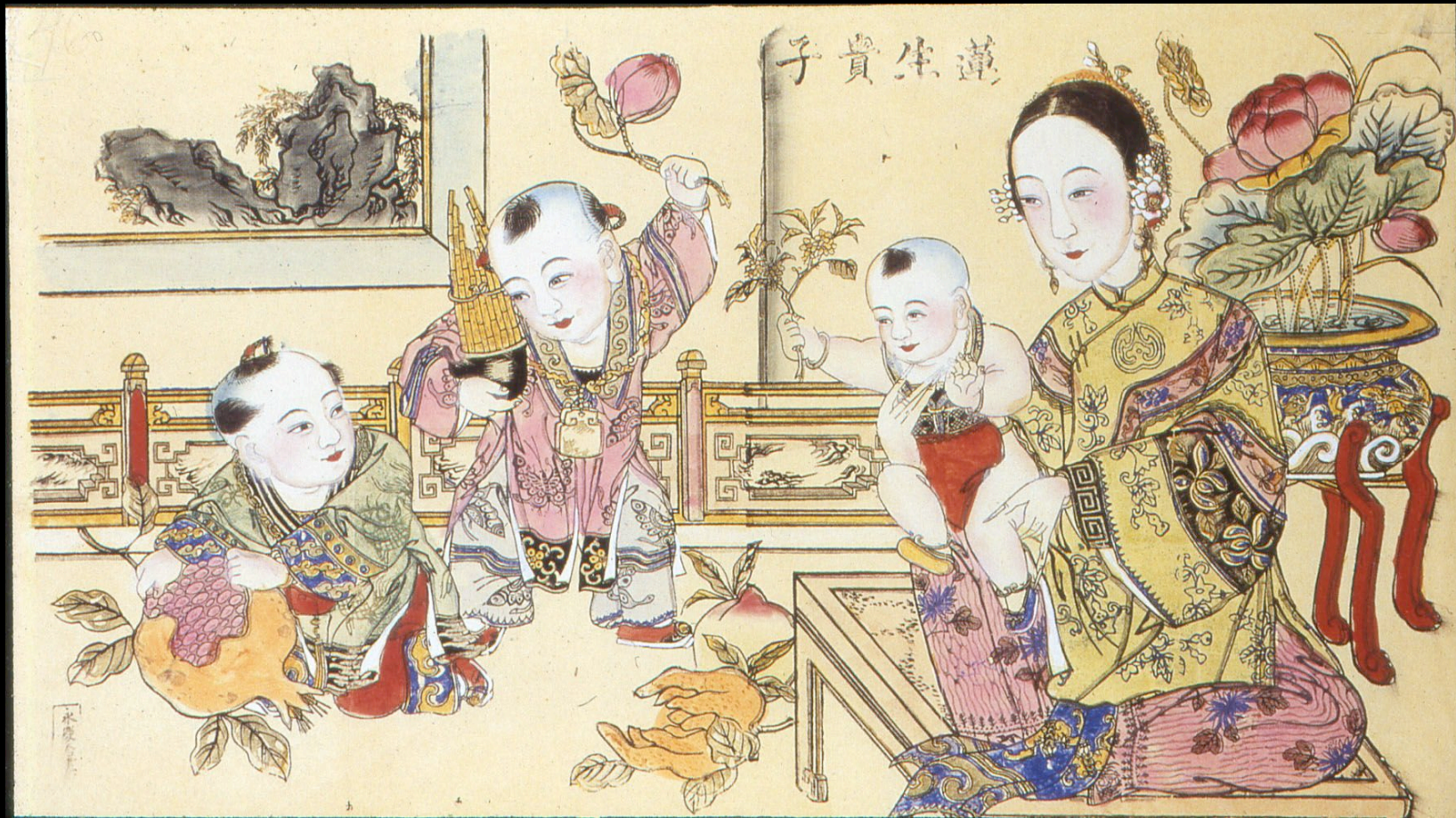
New Year's prints in situ



New Year's prints in situ
(kitchen in northern Chinese village)



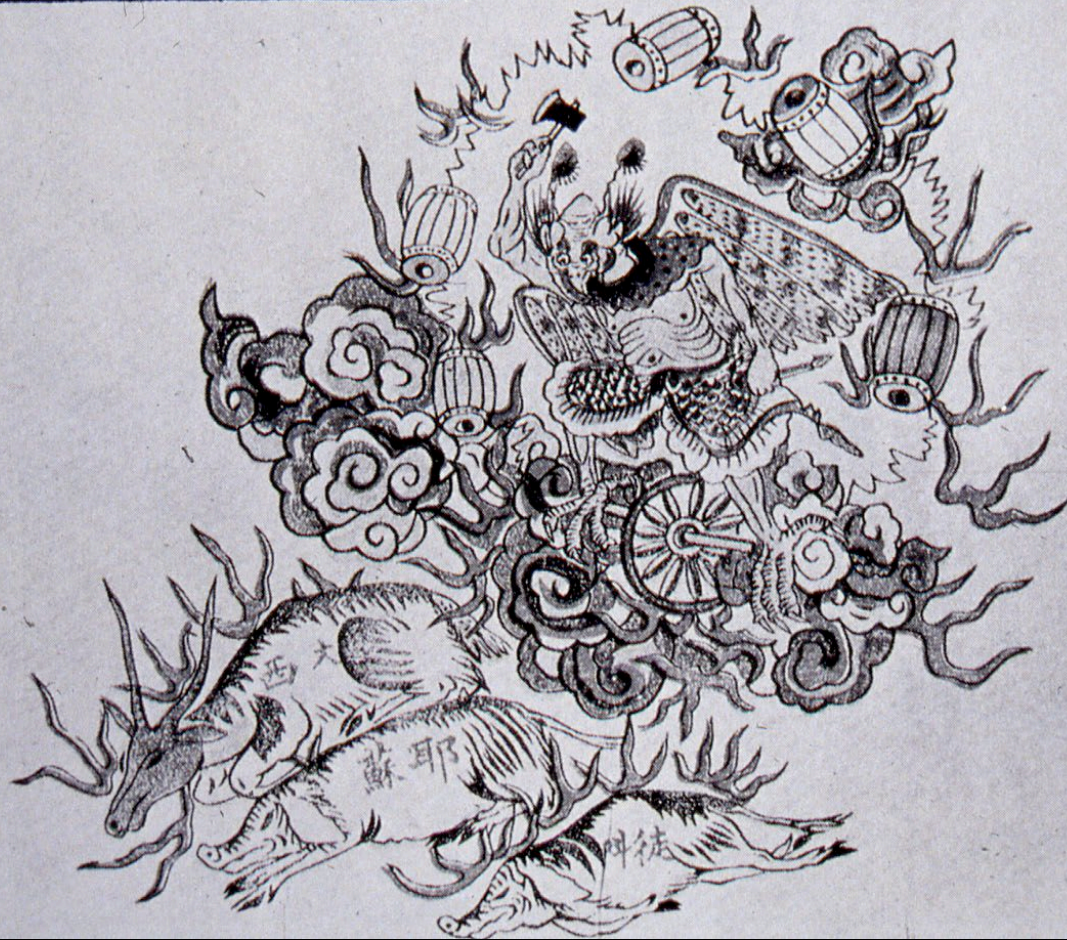
Anon. *Five Sons Successful in Examinations*, New Year's print, 19th century (Laing WO plate 2)



Anon. *The Lotus Bears Precious Seeds (Mother and Three Sons)*. New Year's print; 60 x 160 cm. (Vinograd & Thorp)

雷殛豬羊圖

一聲怒氣發天庭。二月蟄驚。三春運轉。



羣醜遊魂收地獄。雨晴命盡。四海妖除。

Anti-Christian print, ca. 1860 (Laing fig. 2)



Anti-Christian print, ca. 1860s (Laing fig. 3).



Madame Meng Encouraging Girls to Study, color woodblock print from Yangliuqing, ca. 1900, dimensions unknown. Laing MCLC fig. 16

女子求學

中國舊日的風俗。沒有不重視男子。輕視女子的。這毛病諸位知道在那裡嗎。女子深居閨閣。就知道小小的裏面。隻脚。

一點事情不作。

一點學問不講。

未。坐吃坐穿。簡直

的是一個廢人。不持古

今大事。中外時事。一點

不知道。就是

家家所難不

開的來往書

信。日用帳目。也必定

倚賴他人。怎麼會教人不

輕視呢。近來設立女學也

不少咧。少年女子。要

是趁此機會。快快

的認些字。講求些

學問。漸漸的男女也就能

樣看待。沒有輕視女子的。少

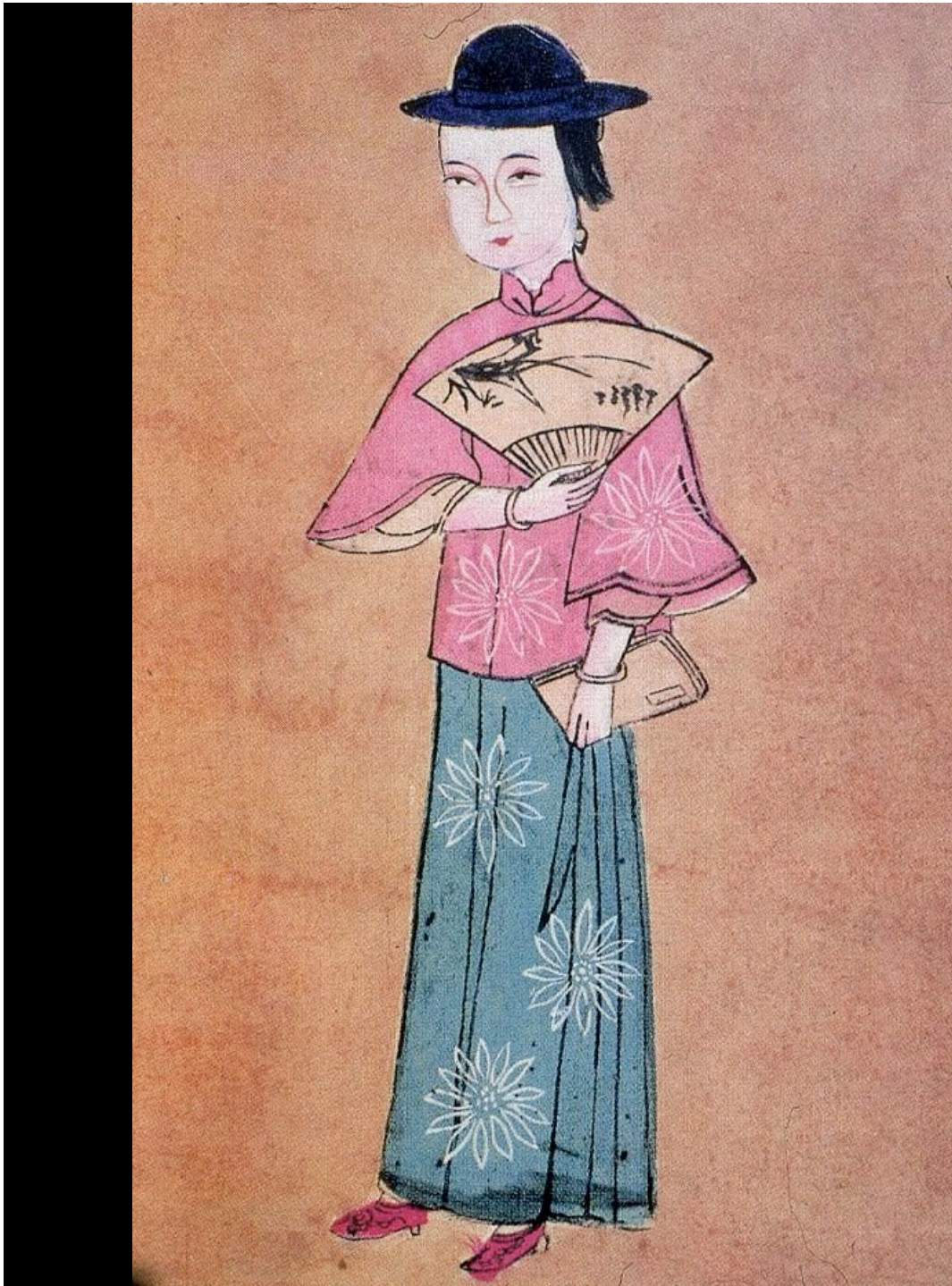
年女子呀。快快的想想罷。可萬

別像從先那個樣子。拉。

齊建隆



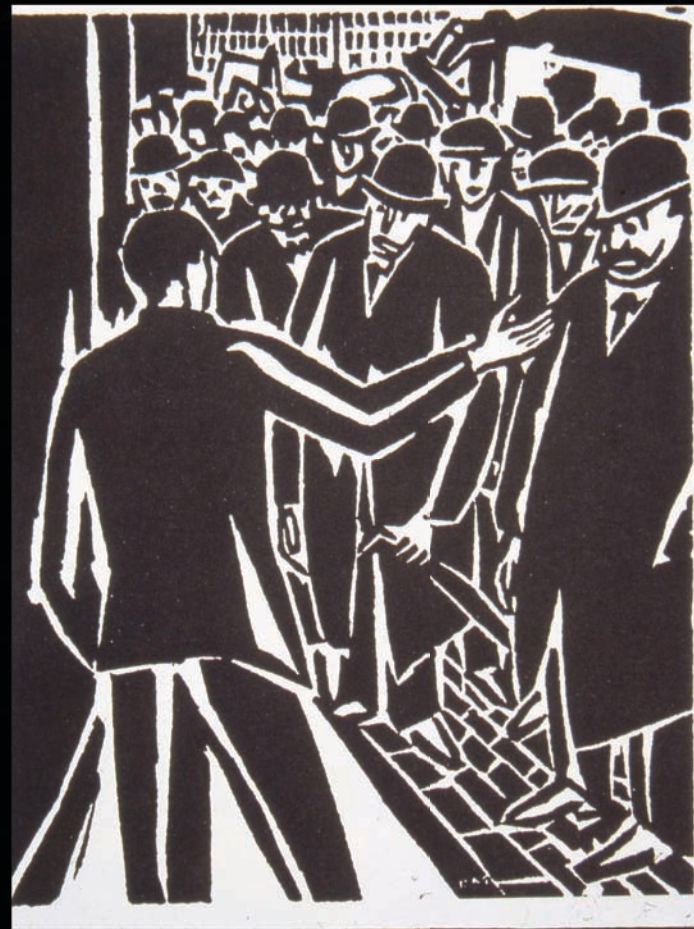
Girls Seek Education, color woodblock print from Yangliuqing, ca. 1900, 34.5 x 60 cm, Tianjin Museum of History Collection. Laing MCLC fig. 14



A School Girl, color
woodblock print from
Mianzhu, Sichuan, ca. 1910,
54 x 40 cm, Wang Shucun
collection. Laing MCLC fig.
20



Chen Tiegeng. *Under the Threat of Bayonets*. 1933. (Laing WO fig. 10)



Franz Masereel. Untitled. From *My Book of Hours*, ca. 1920. (Laing WO fig. 9)



Li Hua standing before one of his prints, *Farming on a Mountainside Terrace*. 1981.



Rong Ke, *Kollwitz*. Woodcut print. 1940.

Käthe Kollwitz, *Self-Portrait*. Lithograph. 1927.





Käthe Kollwitz, *Outbreak (Ausbruch) no. 5* from the *Peasant War* cycle, etching, 1903. (Laing WO fig. 6)



Li Hua, *Arise!* Woodblock print, 1935. (Laing WO fig. 5)





Käthe Kollwitz, *Memorial to Karl Liebknecht*, woodblock print 1919-20 (Laing fig. 7)



Li Hua, *Roar China!* Woodblock print, 1935.



Hu Yichuan. *To the Front!* 1932. Woodcut; 23.3 x 30.6 cm. Shanghai Lu Xun Museum.



Gu Yuan, *Divorce Registration*, pre-1942 (Laing WO fig. 21)



Gu Yuan, *Divorce Registration*, post-1942 (Laing fig. 21b)



Zhang Huanjiang. *Divorce Registration*. 1950.
16.6 x 19.4 cm.



PLATE 9. Gu Yuan, *Transporting Hay*. SOURCE: Gu (1952:2).



PLATE 10. Gu Yuan, *A Flock of Sheep*. SOURCE: Gu (1952:4).



Jean Francois Millet (1814-75), *The Sower*, 1850. OC, 101.6 x 82.6 cm. BMFA.